



Rail Fleet Services Monthly Report March 2009



Metro

Table of Contents

• Safety	
– Industrial Injuries	Page 1
– Rail Vehicle Accidents & Major Incidents	Page 2
• Customer Service	
– Service Delivery – AM/PM Pull-Outs	Page 3
– Vehicle Utilization – Blue Line & Green Line	Page 4
– Vehicle Utilization – Red Line & Gold Line	Page 5
– Mean Miles Between Failures (Major)	Page 6
– Repeaters (Major)	Page 7
• Business Processes	
– Incident Problems	Page 8
– Preventative Maintenance Compliance	Page 9
• Finance	
– Vandalism & Graffiti Costs	Page 10
– Graffiti Pictures	Page 11
– Material & Labor Costs	Page 12
– Cost per mile	Page 13
• Growth	
– Rail Fleet Service Training	Page 14
– Absences vs. Overtime	Page 15

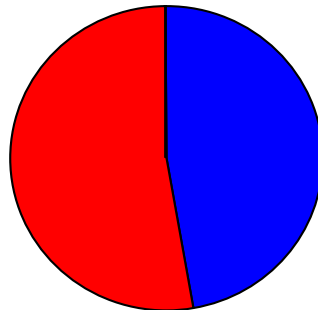
Industrial Injuries – Lost Work Hours

March 2009

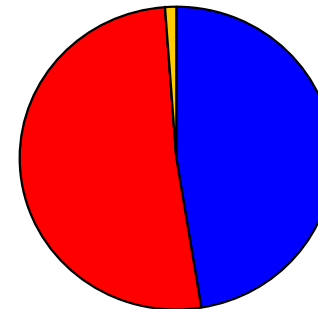
	Apr-08	May-08	Jun-08	Jul-08	Aug-08	Sep-08	Oct-08	Nov-08	Dec-08	Jan-09	Feb-09	Mar-09	Year to Date
Blue Line	48	160	112	152	240	320	352	328	512	400	488	280	3,392
Red Line	48	368	344	344	392	264	352	328	360	280	264	312	3,656
Green Line	0	0	0	0	0	0	0	0	0	0	0	0	0
Gold Line	0	0	0	0	0	0	0	0	80	8	0	0	88
Totals	96	528	456	496	632	584	704	656	952	688	752	592	7,136

March 2009 - Lost Work Hours

Year-to-Date Lost Work Hours



■ Blue Line ■ Red Line ■ Green Line ■ Gold Line



■ Blue Line ■ Red Line ■ Green Line ■ Gold Line

	Employees		March 2009 Lost Work Hours		
	Assigned	Active	Service Attendant	Maint. Specialist	March 2009 Total Hrs.
Blue Line	106	102	160	120	280
Red Line	106	101	312	0	312
Green Line	50	49	0	0	0
Gold Line	47	46	0	0	0
Totals	309	298	472	120	592
Total Lost Work Hours for 12-months = 7,136 hours					

Rail Vehicle Accidents & Major Incidents

March 2009

	Apr-08	May-08	Jun-08	Jul-08	Aug-08	Sep-08	Oct-08	Nov-08	Dec-08	Jan-09	Feb-09	Mar-09	Totals
Blue Line	\$1,789	\$2,473	\$1,412	\$14,603	\$7,308	\$55,579	\$1,672	\$1,312	\$20,456	\$79,318	\$3,716	\$9,500	\$189,638
Red Line	\$0	\$0	\$418	\$0	\$3,127	\$0	\$0		\$0	\$0	\$0	\$0	\$3,545
Green Line	\$0	\$0	\$0	\$0	\$0	\$15,758	\$0	\$4,181	\$0	\$0	\$0	\$0	\$19,939
Gold Line	\$0	\$0	\$0	\$0	\$3,504	\$0	\$0		\$0	\$0	\$0	\$1,231	\$3,504
Totals	\$1,789	\$2,473	\$1,830	\$14,603	\$13,939	\$71,337	\$1,672	\$5,493	\$20,456	\$79,318	\$3,716	\$10,731	\$216,626

Rail Vehicle Accident Costs - March 2009			
2009	Problem code	Incident Description	Cost
March 5	10-74 - Train vs. Train Gold Line	T-261 upon moving car 725 from 7N apron towards bumping post 6 area made contact with stationary car 230 on 6N apron.	\$1,231
March 7	10-72 - Train vs. Pedestrian Gold Line	Work Permit D-9, Simulating Drill, 10-72 at Columbia Street Bridge.	\$0
Gold Line Total Repair Cost			\$1,231
March 14	10-73 - Train vs. Vehicle Blue Line	Train vs car in grade crossing @ 103rd St., Train #6, T-129,	\$7,317
March 27	10-73 - Train vs. Vehicle Blue Line	Auto turns left @ Flower/18th St. T-132, Track 2 S/B, Train 1	\$2,183
Blue Line Total Repair Cost			\$9,500
GRAND TOTAL			\$10,731
No accidents for Red & Green Lines			
(10-71) = Train vs. Object, (10-72) = Train vs. Pedestrian, (10-73) = Train vs. Vehicle, (10-74) = Train vs. MTA Vehicle, (10-75) = Derailment			



Train Vs. Train March 5, 2009 – Gold Line

Service Delivery – AM/PM Pull-Outs

March 2009

Cars Available for AM/PM Pull-Outs

Blue Line – Fleet Size 69 cars

- Weekday pull-out: 60 cars
- Weekend pull-out: 36 cars
- **Monthly Mileage: 406,493 miles**

Red Line - Fleet Size 104 cars

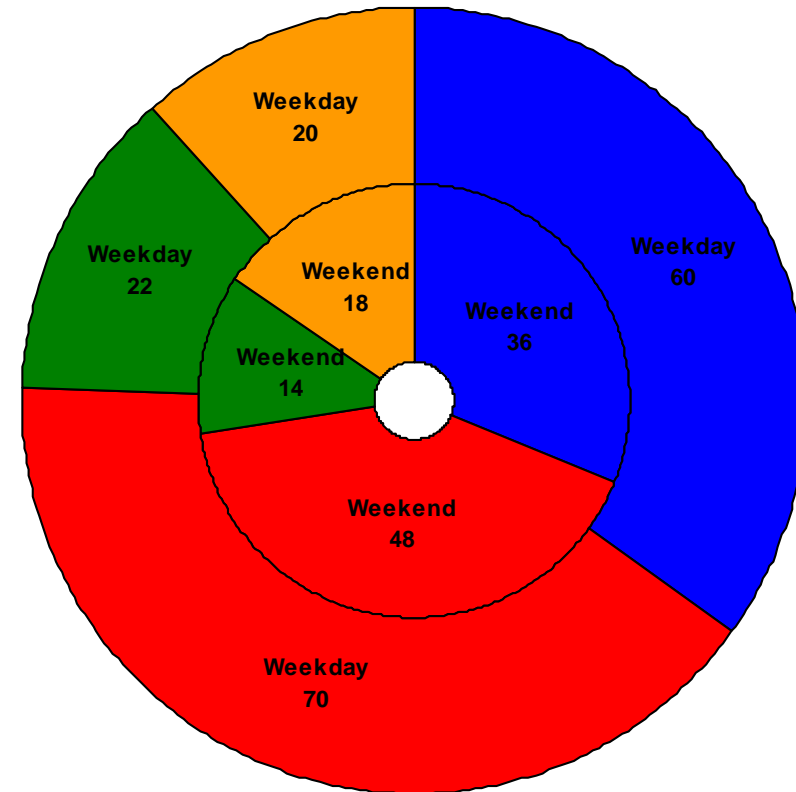
- Weekday pull-out: 70 cars
- Weekend pull-out: 48 cars
- **Monthly Mileage: 563,950 miles**

Green Line – Fleet Size 28 cars

- Weekday pull-out: 22 cars
- Weekend pull-out: 14 cars
- **Monthly Mileage: 220,463 miles**

Gold Line – Fleet Size 41 cars

- Weekday pull-out: 20 cars
- Weekend pull-out: 18 cars
- **Monthly Mileage: 156,340 miles**

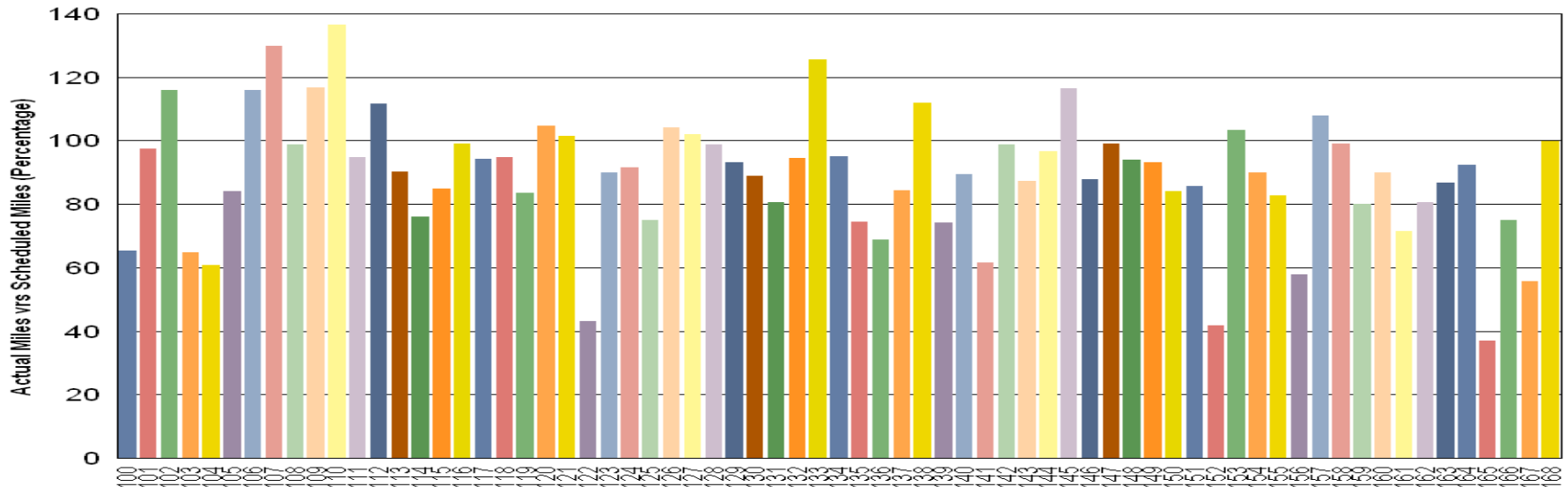


■ Blue Line ■ Red Line ■ Green Line ■ Gold Line

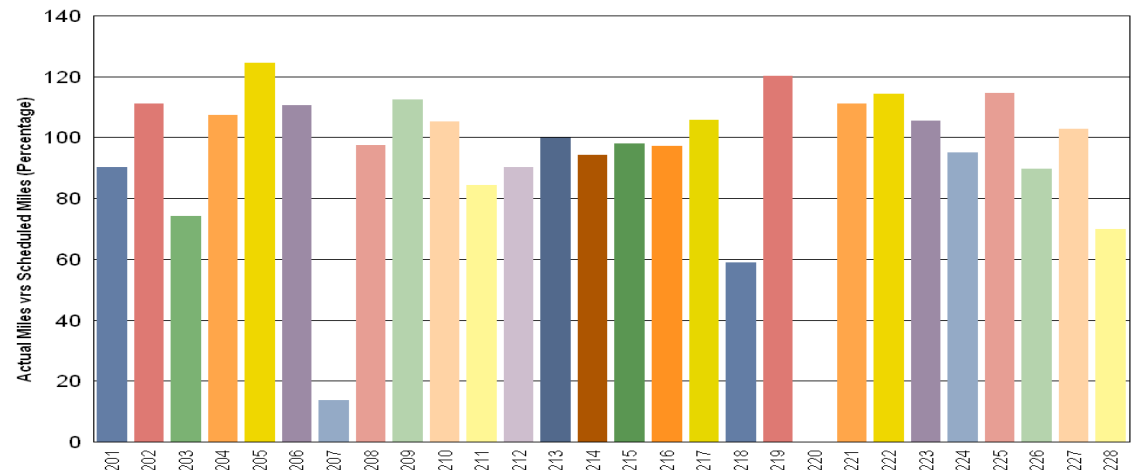
VEHICLE UTILIZATION

March 2009

Metro Blue Line



Metro Green Line



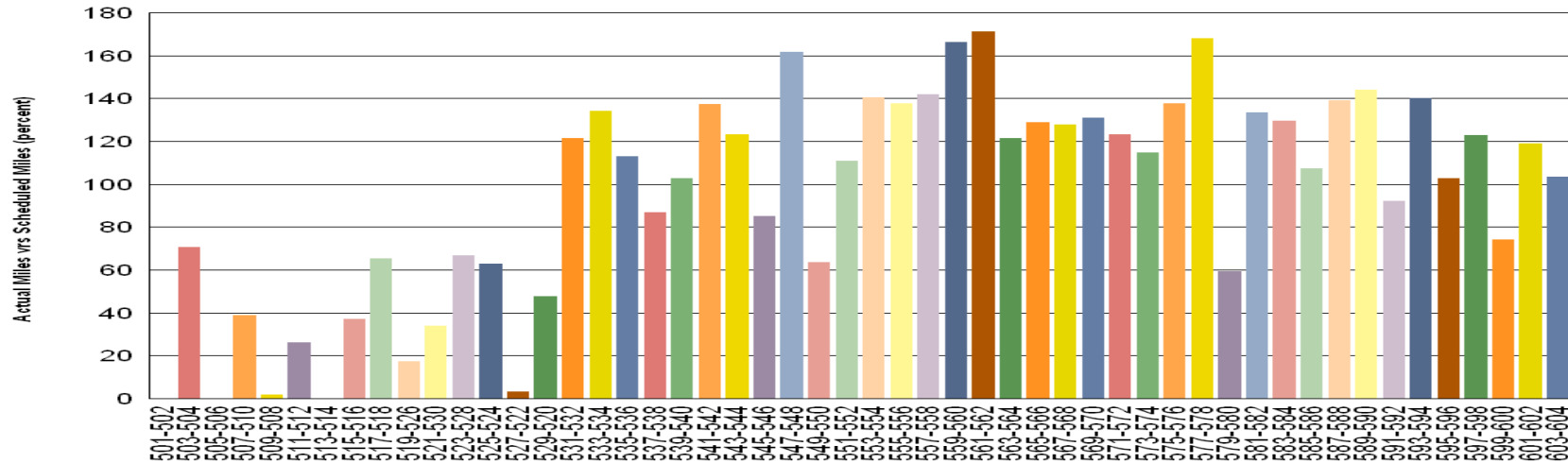
Green Line - Car 207 has numerous EMI faults in March & Car 220 is under rebuilding A-Truck.

Percentage includes an average 4% mileage deduction for Yard mileage and Vehicle Testing.

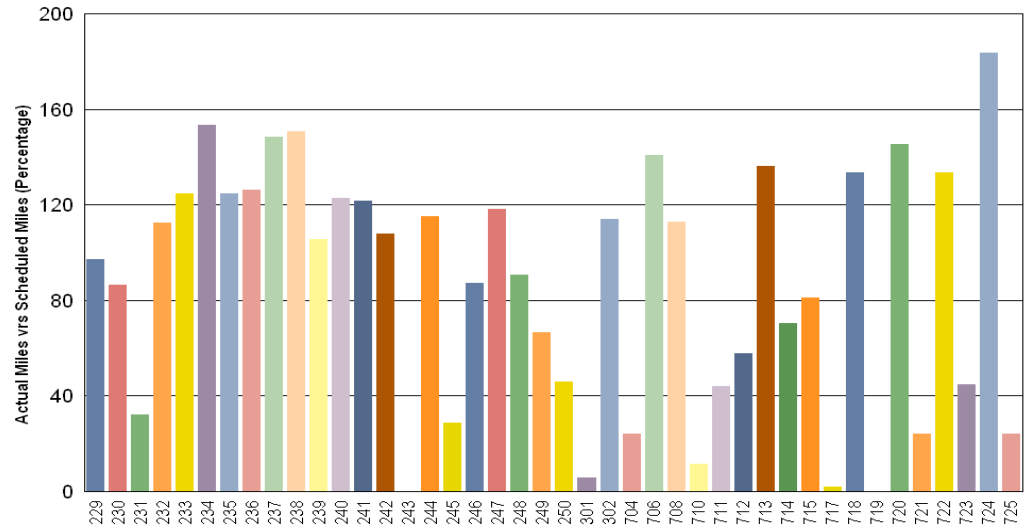
VEHICLE UTILIZATION

March 2009

Metro Red Line



Metro Gold Line



Red Line - The original 30 Base Buy cars are not being used to their fullest potential for various reasons such as propulsion problems so the remaining Option Buy cars are forced to pick up the slack.

Gold Line - Car 243 is in Sacramento having its fire damage repaired. Car 301 had friction brakes failures. Car 710 was held for 30K PM & car 717 on hold for decals.

Percentage includes an average 4% mileage deduction for Yard mileage and Vehicle Testing.

Mean Miles Between Failures (Major)

March 2009

Miles Between Major Failures

Blue Line: 36,954 miles (11 Major Failures)

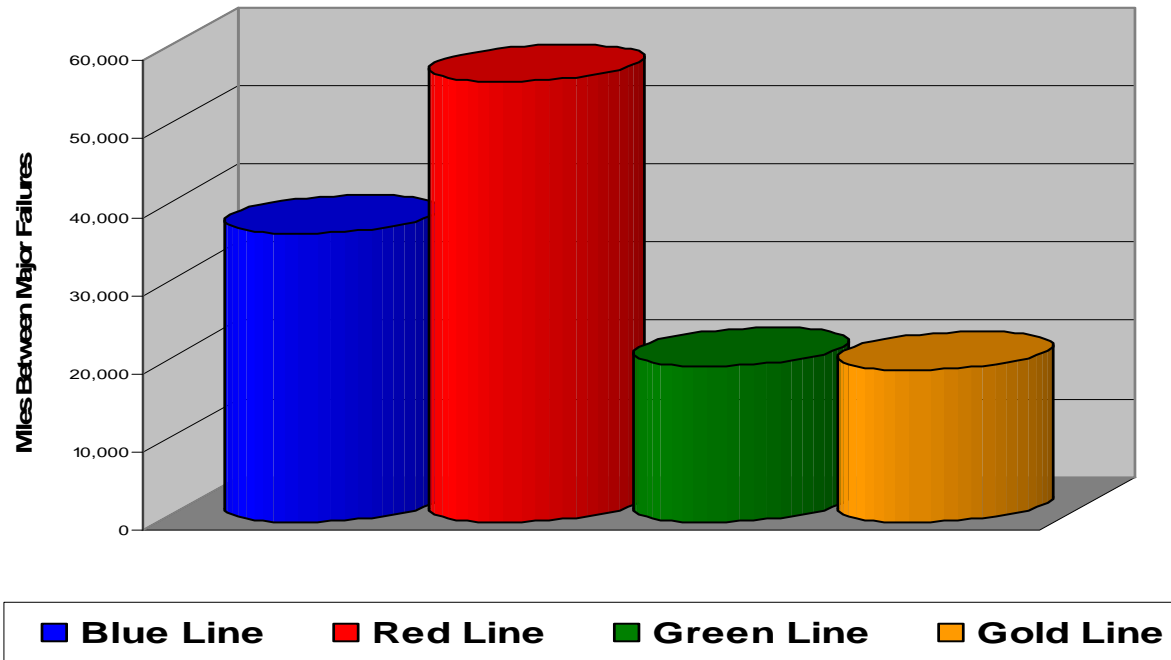
Red Line: 56,395 miles (10 Major Failures)

Green Line: 20,042 miles (11 Major Failures)

Gold Line: 19,543 miles (8 Major Failures)

Siemens P2000 96,857 miles (1 Major Failure)

AnsaldoBreda P2550 8,494 miles (7 Major Failures)



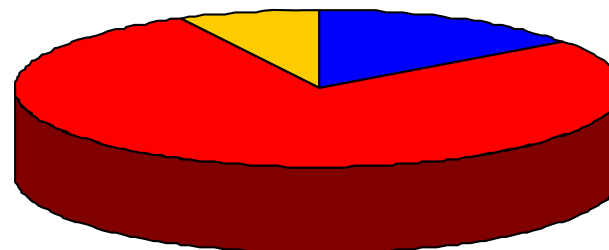
Repeat Failures (Major) March 2009

Blue Line: 2 Repeat Failures

Red Line: 16 Repeat Failures

Green Line: 0 Repeat Failures

Gold Line: 1 Repeat Failures



■ Blue Line ■ Red Line ■ Green Line ■ Gold Line

Repeater Car Details - March 2009

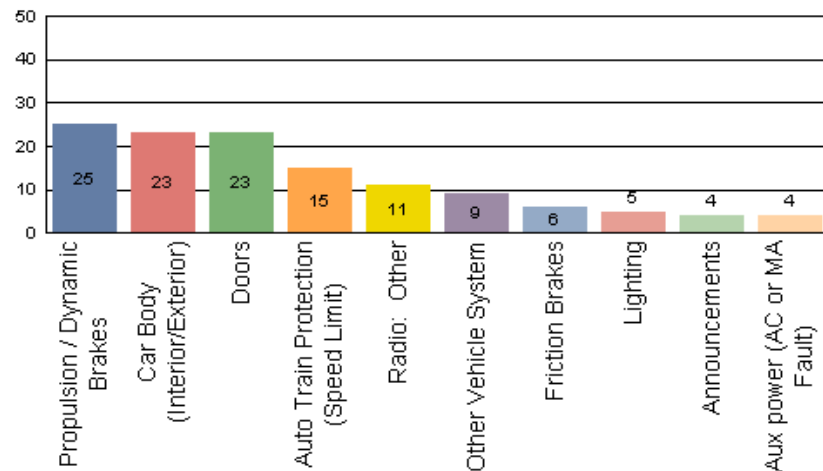
System	Blue Line		Red Line		Green Line		Gold Line	
	Car #	No. of Repeats	Car #	No. of Repeats	Car #	No. of Repeats	Car #	No. of Repeats
ATP	146	1						
	132	1						
Doors			539	1				
			541	3				
			566	2				
Friction Brakes			518	1				
			547	1			723	1
Other Vehicle System			563	1				
PA/Intercom			572	1				
Propulsion/Dynamic Brake			521	2				
			540	2				
			579	2				
TOTALS	2		16		0		1	

Reported Incidents

March 2009

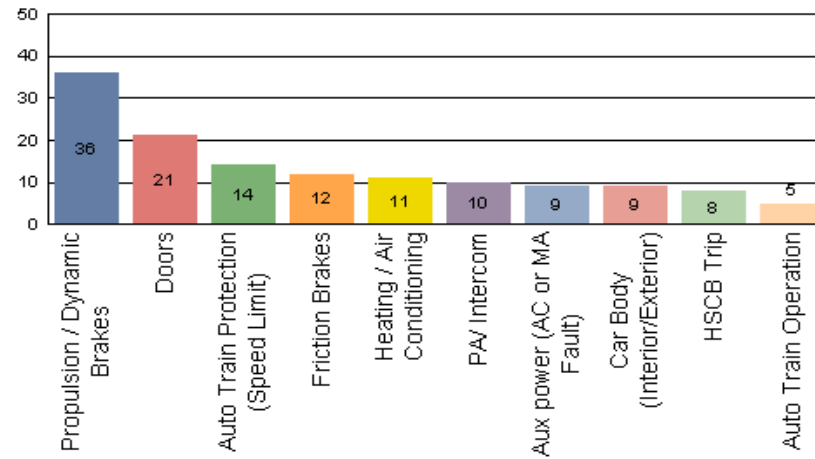
Metro Blue Line

Count of the Top 10 Incident Problems



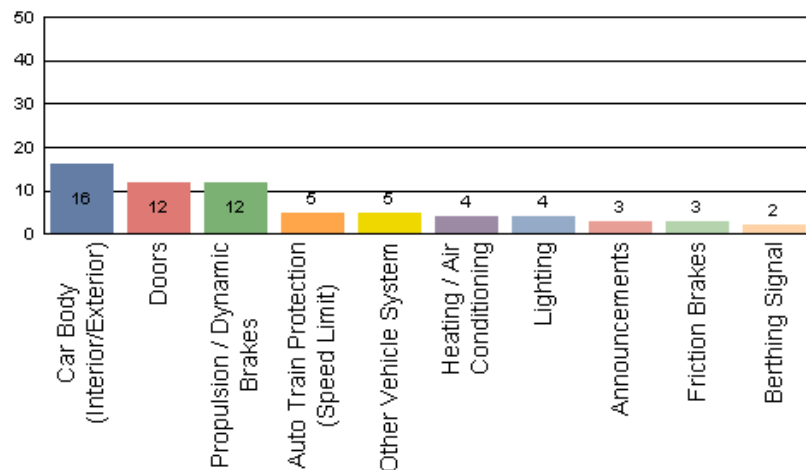
Metro Red Line

Count of the Top 10 Incident Problems



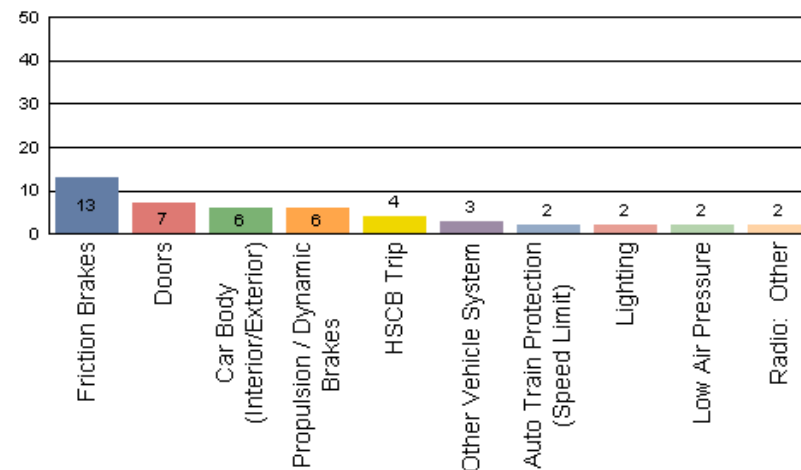
Metro Green Line

Count of the Top 10 Incident Problems



Metro Gold Line

Count of the Top 10 Incident Problems



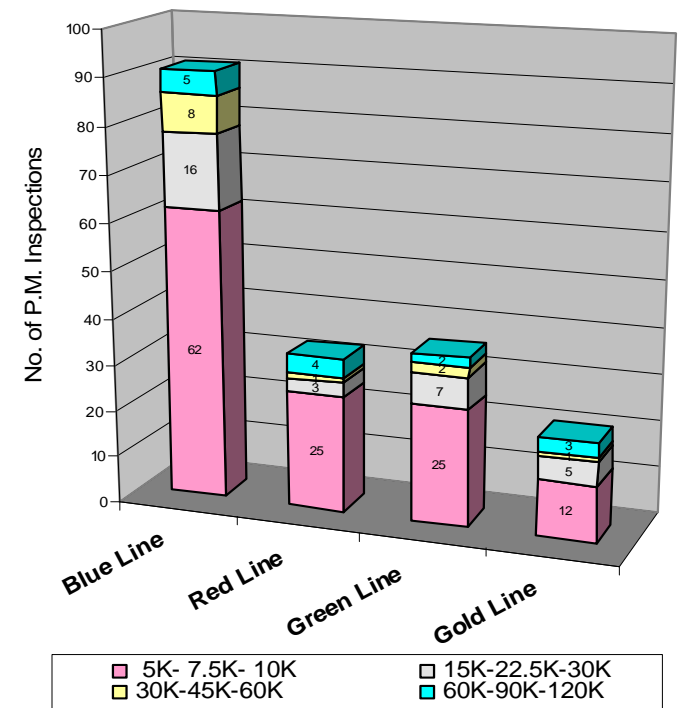
Preventative Maintenance Compliance

March 2009

Averages	Apr-08	May-08	Jun-08	Jul-08	Aug-08	Sep-08	Oct-08	Nov-08	Dec-08	Jan-09	Feb-09	Mar-09
Blue Line	100%	100%	97%	100%	100%	96%	100%	100%	100%	100%	100%	100%
Red Line	100%	100%	80%	100%	100%	100%	100%	100%	100%	100%	100%	100%
Green Line	100%	100%	100%	100%	100%	100%	100%	100%	100%	100%	93%	97%
Gold Line	100%	100%	100%	100%	100%	100%	100%	100%	100%	100%	100%	100%

March 2009 Preventative Maintenance Inspections

No. of P.M. Inspections	5K-7.5K-10K	15K-22.5K-30K	30K-45K-60K	60K-90K-120K	Totals	Percent Compliance
Blue Line	62	16	8	5	91	100%
Red Line	25	3	1	4	33	100%
Green Line	25	7	2	2	36	97%
Gold Line	12	5	1	3	21	100%
Totals:	124	31	12	14	181	99%



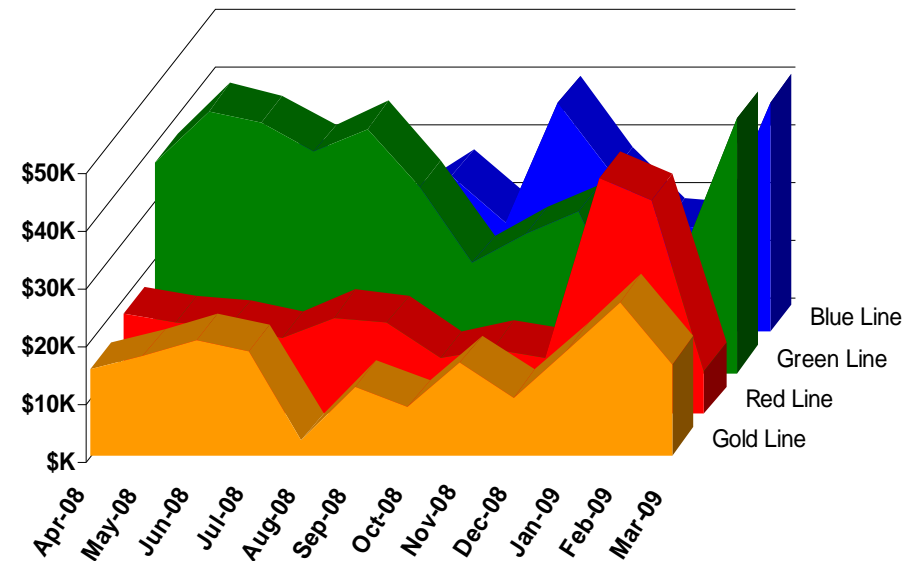
Vandalism & Graffiti Report

March 2009

Graffiti Costs - March 2009

	Apr-08	May-08	Jun-08	Jul-08	Aug-08	Sep-08	Oct-08	Nov-08	Dec-08	Jan-09	Feb-09	Mar-09	Year-to-Date
Blue Line	\$33,717	\$22,258	\$30,483	\$19,055	\$21,297	\$27,169	\$19,172	\$39,722	\$27,949	\$18,498	\$17,708	\$39,975	\$317,003
Green Line	\$36,670	\$45,594	\$43,424	\$38,306	\$42,483	\$31,715	\$19,070	\$11,424	\$28,128	\$40,809	\$37,117	\$44,211	\$418,951
Red Line	\$17,477	\$15,881	\$15,127	\$13,153	\$16,728	\$15,743	\$9,744	\$24,038	\$9,790	\$8,504	\$21,465	\$7,529	\$175,179
Gold Line	\$14,864	\$17,174	\$19,888	\$17,978	\$2,372	\$11,825	\$8,344	\$16,094	\$10,040	\$18,107	\$26,625	\$15,808	\$179,119
Totals	\$102,728	\$100,907	\$108,922	\$88,492	\$82,880	\$86,452	\$56,330	\$91,278	\$75,907	\$85,918	\$102,915	\$107,523	\$1,090,252

March 2009 Vandalism & Graffiti - All Rail				
	Qty	Labor	Materials	Totals
Windows replaced	112	\$7,056	\$13,292	\$ 20,348
Vandal Shields	743	\$18,811	\$9,100	\$ 27,911
Vandal Shields - Other	9	\$158	\$64	\$ 222
Seats Cleaned	6,390	\$15,683	\$0	\$ 15,683
Seats Replaced	90	\$2,835	\$3,570	\$ 6,405
Ext/Int Repairs	1,182	\$26,903	\$10,052	\$ 36,955
Totals for March 2009		\$71,445	\$36,078	\$107,523



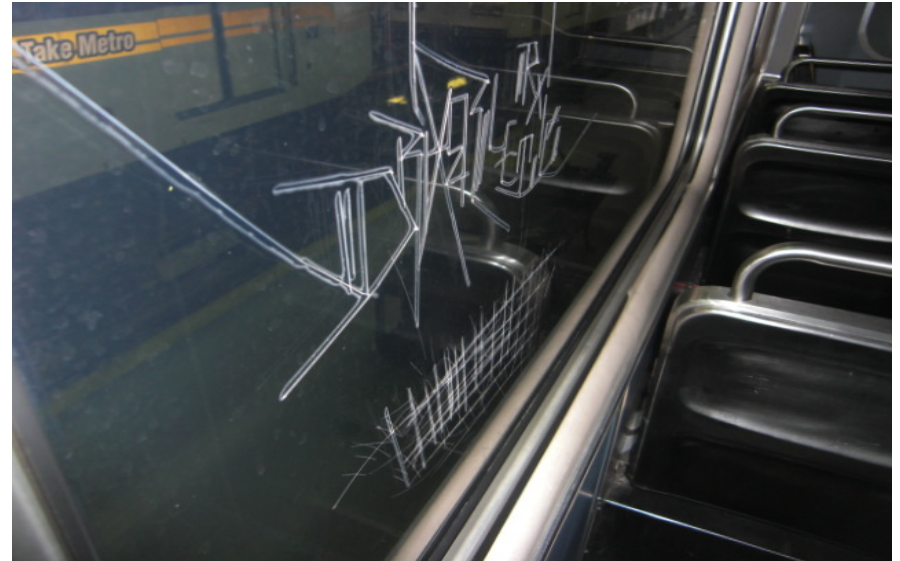
Vandalism & Graffiti Pictures

March 2009

A



B



C



D



A - Metro Red Line

B - Metro Blue Line

C - Metro Green Line

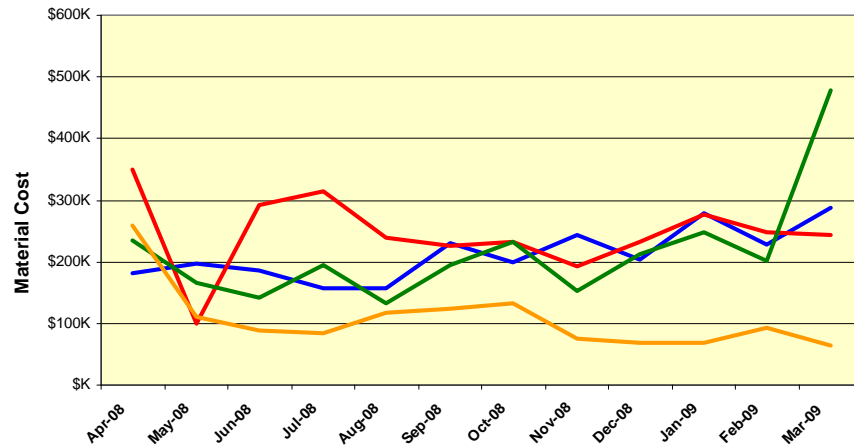
D - Metro Gold Line

Material and Labor Costs

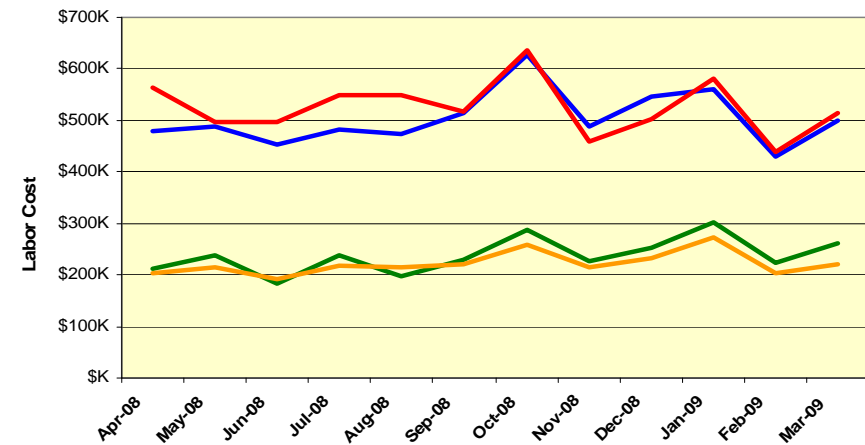
March 2009

MATERIALS	Apr-08	May-08	Jun-08	Jul-08	Aug-08	Sep-08	Oct-08	Nov-08	Dec-08	Jan-09	Feb-09	Mar-09	Totals
Blue Line	\$181K	\$197K	\$185K	\$156K	\$157K	\$230K	\$199K	\$244K	\$204K	\$279K	\$227K	\$289K	\$2,550K
Red Line	\$349K	\$99K	\$292K	\$314K	\$240K	\$225K	\$232K	\$193K	\$232K	\$277K	\$249K	\$244K	\$2,947K
Green Line	\$235K	\$166K	\$142K	\$194K	\$133K	\$195K	\$233K	\$153K	\$214K	\$248K	\$202K	\$479K	\$2,595K
Gold Line	\$260K	\$110K	\$88K	\$85K	\$118K	\$123K	\$132K	\$74K	\$68K	\$69K	\$92K	\$65K	\$1,284K
Totals	\$1,025K	\$572K	\$707K	\$750K	\$649K	\$774K	\$795K	\$665K	\$717K	\$873K	\$771K	\$1,077K	\$9,376K

Material Costs



Labor Costs

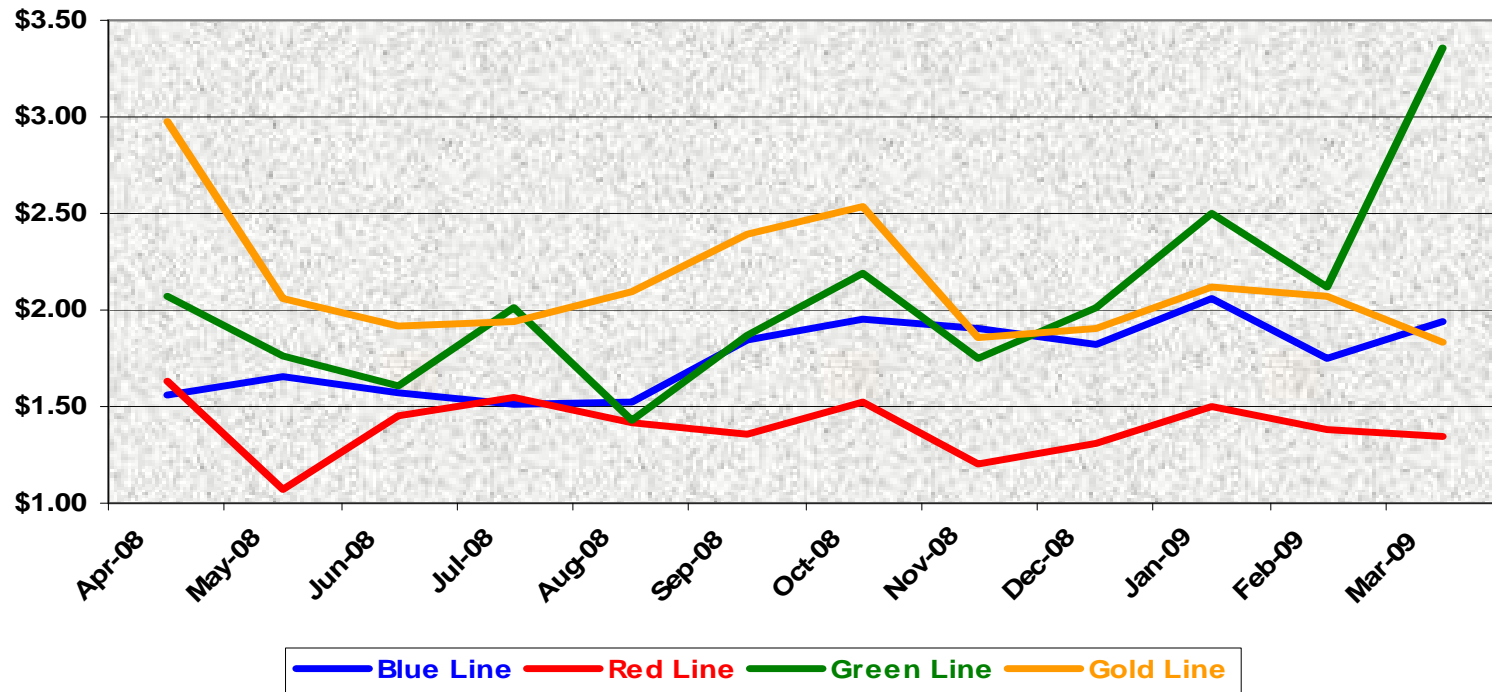


LABOR	Apr-08	May-08	Jun-08	Jul-08	Aug-08	Sep-08	Oct-08	Nov-08	Dec-08	Jan-09	Feb-09	Mar-09
Blue Line	\$479K	\$487K	\$454K	\$483K	\$473K	\$513K	\$628K	\$489K	\$547K	\$560K	\$429K	\$501K
Red Line	\$563K	\$498K	\$496K	\$549K	\$548K	\$516K	\$637K	\$460K	\$503K	\$579K	\$440K	\$516K
Green Line	\$211K	\$239K	\$184K	\$237K	\$196K	\$229K	\$287K	\$227K	\$252K	\$302K	\$225K	\$261K
Gold Line	\$202K	\$216K	\$192K	\$217K	\$214K	\$220K	\$260K	\$214K	\$233K	\$272K	\$205K	\$221K
Totals	\$1,454K	\$1,440K	\$1,326K	\$1,486K	\$1,431K	\$1,479K	\$1,812K	\$1,390K	\$1,535K	\$1,713K	\$1,298K	\$1,498K

Cost Per Mile

March 2009

Cost per mile:	Apr-08	May-08	Jun-08	Jul-08	Aug-08	Sep-08	Oct-08	Nov-08	Dec-08	Jan-09	Feb-09	Mar-09	Average
Blue Line	\$1.56	\$1.66	\$1.58	\$1.51	\$1.52	\$1.84	\$1.95	\$1.90	\$1.82	\$2.06	\$1.75	\$1.94	\$1.70
Red Line	\$1.64	\$1.07	\$1.45	\$1.55	\$1.42	\$1.36	\$1.53	\$1.20	\$1.31	\$1.50	\$1.39	\$1.35	\$1.39
Green Line	\$2.07	\$1.76	\$1.61	\$2.01	\$1.43	\$1.87	\$2.19	\$1.75	\$2.01	\$2.50	\$2.12	\$3.36	\$1.86
Gold Line	\$2.97	\$2.06	\$1.91	\$1.94	\$2.10	\$2.40	\$2.54	\$1.86	\$1.90	\$2.12	\$2.08	\$1.83	\$2.19



No facility costs are included

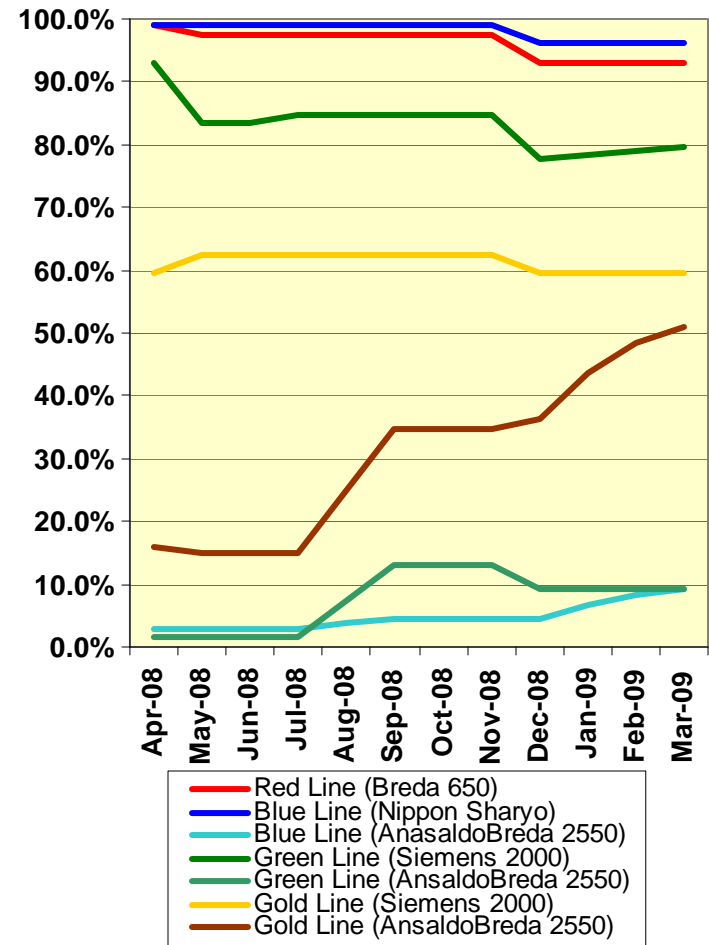
Rail Fleet Services Instruction

March 2009

Training classes completed during the month of March 2009

March 2009						
Description	Status	Start	End	Course Hours	Student Count	Training Hours
Blue Line Training (Nippon Sharyo P865/P2020 LRV):						
RFS ANSALDOBREDA 2550 VENDOR	Complete	3/2/2009	3/23/2009	48	3	144
HAZARD COMMUNICATION: IDENTIFYING THE DANGERS	Complete	3/5/2009	3/5/2009	4	1	4
P-CARD TRAINING FOR CARD HOLDERS AND AOS	Complete	3/10/2009	3/10/2009	2	1	2
MOP LEGAL DEVELOPMENT AND ETHICS	Complete	3/18/2009	3/18/2009	3	1	3
MOP RECORDS MANAGEMENT	Complete	3/25/2009	3/25/2009	2	1	2
ETD PEOPLE SKILLS	Complete	3/19/2009	3/19/2009	3	1	3
ETD EFFECTIVE TIME MANAGEMENT	Complete	3/4/2009	3/4/2009	3	1	3
PERSONAL PROTECTIVE EQUIPMENT	Complete	3/20/2009	3/20/2009	2	1	2
SAFETY ORIENTATION: ON ALERT	Complete	3/24/2009	3/24/2009	2	1	2
Fire Safety (Video)	Complete	3/24/2009	3/24/2009	2	1	2
Hearing Protection (Video)	Complete	3/19/2009	3/21/2009	2	2	4
Electrical Safety (Video)	Complete	3/3/2009	3/19/2009	2	3	6
Back Safety (Video)	Complete	3/12/2009	3/16/2009	2	2	4
Lockout/Tagout (Video)	Complete	3/4/2009	3/17/2009	2	4	8
Confined Space Entry (Video)	Complete	3/18/2009	3/18/2009	2	1	2
BLOODBORNE PATHOGENS (VIDEO)	Complete	3/14/2009	3/16/2009	2	2	4
FALL PROTECTION	Complete	3/3/2009	3/19/2009	2	4	8
TRANSIT TERRORISM AWARENESS TRAINING	Complete	3/24/2009	3/24/2009	1	1	1
RFS SIEMENS 2000 COMMUNICATIONS	Complete	3/2/2009	3/20/2009	16	3	48
RFS SIEMENS 2000 LIGHTS & DEST. SIGNS	Complete	3/23/2009	3/26/2009	8	3	24
RFS SIEMENS 2000 DOORS	Continuing	3/27/2009		16	3	48
DRUG-AND-ALCOHOL-FREE WORK ENVIRONMENT POLICY	Complete	3/12/2009	3/12/2009	4	1	4
Total Blue Line Training (Hours):						328
Red Line Training (Breda A650 HRV):						
P-CARD TRAINING FOR CARD HOLDERS AND AOS	Complete	3/10/2009	3/10/2009	2	2	4
FIRST AID AND PREPAREDNESS	Complete	3/11/2009	3/11/2009	3	1	3
ADULT CPR/AED	Complete	3/11/2009	3/11/2009	5	3	15
Total Red Line Training (Hours):						22
Green Line Training (Siemens P2000 LRVs):						
MOP RECORDS MANAGEMENT	Complete	3/25/2009	3/25/2009	1	1	1
MOP LEGAL DEVELOPMENT AND ETHICS	Complete	3/11/2009	3/11/2009	3	3	9
RFS SIEMENS 2000 COMMUNICATIONS	Complete	3/2/2009	3/20/2009	16	3	48
RFS SIEMENS 2000 LIGHTS & DEST. SIGNS	Complete	3/23/2009	3/26/2009	8	3	24
RFS SIEMENS 2000 DOORS	Continuing	3/27/2009		16	3	48
MOP SEXUAL HARASSMENT PREVENTION AND TITLE VII	Complete	3/12/2009	3/30/2009	2	5	10
E-TIME TRAINING	Complete	3/3/2009	3/3/2009	1	1	1
Total Green Line Training (Hours):						140
Gold Line Training (P2550 & P2000 LRVs):						
RFS ANSALDOBREDA 2550 FRICTION BRAKES	Complete	3/2/2009	3/6/2009	32	4	128
RFS ANSALDOBREDA 2550 H.V.A.C.	Complete	3/9/2009	3/12/2009	32	4	128
P-CARD TRAINING FOR CARD HOLDERS AND AOS	Complete	3/10/2009	3/10/2009	2	3	6
DRUG-AND-ALCOHOL-FREE WORK ENVIRONMENT POLICY	Complete	3/12/2009	3/12/2009	4	1	4
MOP LEGAL DEVELOPMENT AND ETHICS	Complete	3/11/2009	3/11/2009	3	1	3
ADULT CPR/AED	Complete	3/25/2009	3/25/2009	6	2	12
Total Gold Line Training (Hours):						153
Total Rail Fleet Services Instruction for the month of March 2009 (Hours):						643.0
Core Vehicle Training Completed:						
		BLUE	RED	GREEN	GOLD	
Percentage of core vehicle training complete:		96.2%	93.0%	79.7%	59.6%	
AnsaldoBreda 2550 Training Completed:		9.1%	N/A	9.3%	48.4%	
Average Specialist Rail Experience Level in Years:						
		10.1	8.1	7.5	7.7	

Core Training Completed



Metro

Absences vs. Overtime

March 2009

ABSENCE TYPE and HOURS	3940	3941	3942	3943	3944	Total
AWP-ABSENT W/O PERMISSION	0.00	8.00	0.00	0.00	0.00	8.00
BER-BEREAVEMENT	0.00	64.00	48.00	120.00	16.00	248.00
CTO-COMPENSATORY TIME OFF	0.00	172.77	147.23	100.00	24.00	444.00
CVA - CASUAL VACATION	76.00	0.00	705.50	8.00	0.00	789.50
DSL-DISABILITY LEAVE/LONG	0.00	288.00	528.00	0.00	176.00	992.00
EFH-EMG. FLOAT HOL.	8.00	0.00	80.00	0.00	32.00	120.00
ETO-EXCUSED TIME OFF	2.50	19.00	11.50	3.00	0.00	36.00
FML-FAMILY CARE LEAVE	0.00	249.33	52.28	19.00	8.00	328.61
HLF-HOLIDAY FLOATING	48.00	208.00	112.00	144.00	112.00	624.00
II-INDUSTRIAL INJURY	0.00	80.00	0.00	0.00	0.00	80.00
LC1-LABOR CODE 233	33.00	349.00	275.83	64.00	172.00	893.83
LTI-OCCPIL/LONGTRM INJ LEAVE	0.00	200.00	312.00	0.00	0.00	512.00
MLN-MILITARY ABSENCE-UNPAID	0.00	0.00	0.00	8.00	0.00	8.00
OWP-OFF WITH PERMISSION	0.00	6.90	11.77	6.00	0.00	24.67
RTO-REQUESTED TIME OFF-NO PAY	0.00	10.68	24.00	0.00	0.00	34.68
SCK-SICK PAY	0.00	144.00	218.77	80.00	32.00	474.77
SCW-SICK WITHOUT PAY	0.00	48.00	37.47	174.43	24.00	283.90
SPN-SCHOOL PARTNER NOT PAID	0.00	8.40	0.00	0.00	0.00	8.40
SUP-TEMPORARY SUPERVISOR	4.50	327.16	178.00	277.00	233.50	1,020.16
UB-UNION BUSINESS	0.00	0.00	8.00	8.00	0.00	16.00
VAC-VACATION	0.00	479.35	24.00	91.00	360.50	954.85
Total	172.00	2,662.59	2,774.35	1,102.43	1,190.00	7,901.37
OVERTIME TYPE and HOURS	3940	3941	3942	3943	3944	Total
CTB-COMPENSATORY TIME TO BANK	0.00	70.50	69.80	34.66	9.33	184.29
OTP-PREM OVERTIME	223.50	754.53	806.18	1,226.22	771.04	3,781.47
WLO-Worked Lunch Overtime	4.00	10.00	74.00	18.00	9.00	115.00
Total	227.50	835.03	949.98	1,278.88	789.37	4,080.76
UNCOVERED ABSENCES	3940	3941	3942	3943	3944	Total
Absences FTE	0.99	15.36	16.01	6.36	6.87	45.59
OTP FTE	1.31	4.82	5.48	7.38	4.55	23.54
FTE Difference	-0.32	10.54	10.53	-1.02	2.31	22.04

