



Rail Fleet Services Monthly Report May 2009



Metro

Table of Contents

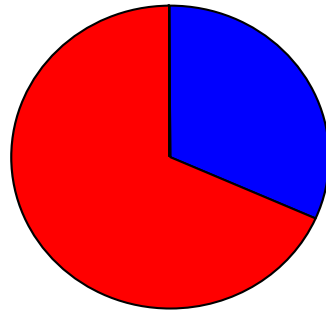
• Safety	
– Industrial Injuries	Page 1
– Rail Vehicle Accidents & Major Incidents	Page 2
• Customer Service	
– Service Delivery – AM/PM Pull-Outs	Page 3
– Vehicle Utilization – Blue Line & Green Line	Page 4
– Vehicle Utilization – Red Line & Gold Line	Page 5
– Mean Miles Between Failures (Major)	Page 6
– Repeaters (Major)	Page 7
• Business Processes	
– Incident Problems	Page 8
– Preventative Maintenance Compliance	Page 9
• Finance	
– Vandalism & Graffiti Costs	Page 10
– Graffiti Pictures	Page 11
– Material & Labor Costs	Page 12
– Cost per mile	Page 13
• Growth	
– Rail Fleet Service Training	Page 14
– Absences vs. Overtime	Page 15

Industrial Injuries – Lost Work Hours

May 2009

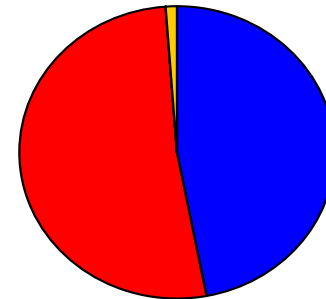
	Jun-08	Jul-08	Aug-08	Sep-08	Oct-08	Nov-08	Dec-08	Jan-09	Feb-09	Mar-09	Apr-09	May-09	Year to Date
Blue Line	112	152	240	320	352	328	512	400	488	280	176	160	3,520
Red Line	344	344	392	264	352	328	360	280	264	312	296	344	3,880
Green Line	0	0	0	0	0	0	0	0	0	0	0	0	0
Gold Line	0	0	0	0	0	0	80	8	0	0	0	0	88
Totals	456	496	632	584	704	656	952	688	752	592	472	504	7,488

May 2009 - Lost Work Hours



■ Blue Line ■ Red Line ■ Green Line ■ Gold Line

Year-to-Date Lost Work Hours



■ Blue Line ■ Red Line ■ Green Line ■ Gold Line

	Employees		May 2009 Lost Work Hours		
	Assigned	Active	Service Attendant	Maint. Specialist	May 2009 Total Hrs.
Blue Line	109	105	160	0	160
Red Line	108	101	344	0	344
Green Line	49	49	0	0	0
Gold Line	47	44	0	0	0
Totals	313	299	504	0	504
Total Lost Work Hours for 12-months = 7,488 hours					

Rail Vehicle Accidents & Major Incidents

May 2009

Repair Costs	Jun-08	Jul-08	Aug-08	Sep-08	Oct-08	Nov-08	Dec-08	Jan-09	Feb-09	Mar-09	Apr-09	May-09	Totals
Blue Line	\$1,412	\$14,603	\$7,308	\$55,579	\$1,672	\$1,312	\$20,456	\$79,318	\$3,716	\$9,500	\$111	\$1,480	\$194,876
Red Line	\$418	\$0	\$3,127	\$0	\$0		\$0	\$0	\$0	\$0	\$0	\$104,950	\$108,495
Green Line	\$0	\$0	\$0	\$15,758	\$0	\$4,181	\$0	\$0	\$0	\$0	\$0	\$0	\$19,939
Gold Line	\$0	\$0	\$3,504	\$0	\$0		\$0	\$0	\$0	\$1,231	\$3,235	\$0	\$4,735
Totals	\$1,830	\$14,603	\$13,939	\$71,337	\$1,672	\$5,493	\$20,456	\$79,318	\$3,716	\$10,731	\$3,346	\$106,430	\$328,045



Train Vs. Train May 11, 2009 – Red Line

Rail Vehicle Accident Costs - May 2009			
2009	Problem code	Incident Description	Cost
May 6	10-73 - Train vs. Auto Blue Line	Train 9, Washington and Central (120A) 164 S/B, Track 2	\$129
May 15	10-71 - Train vs. Object Blue Line	Train 23 struck a shopping cart while travelling south on track 2 at Gage grade crossing.	\$355
May 18	10-73 - Train vs. Auto Blue Line	Train 2 involved in a 10-73 at Pacific and 7th St. (137A) 134 107	\$354
May 21	10-72 - Train vs Pedestrian Blue Line	Train 8 T-226 48th Place grade crossing Track 1 n/b. Consist: 101-145-(152). Lead Car 152 A	\$642
May 26	10-73 - Train vs. Auto Blue Line	Tr#1, T229 Cars (167A-117-104) Washington-Los Angeles Tk2 East	\$0
Blue Line Total Repair Cost			\$1,480
May 11	10-74 - Train vs. MTA Vehicle Red Line	T-123 with student operator T-30 operating train 51 reported hard coupling with train 31 behind US 20 on AR. T-15 was operating train 31 and was stationary in coupling position.	\$104,950
Red Line Total Repair Cost			\$104,950
GRAND TOTAL			\$106,430
No accidents for Gold & Green Lines			
(10-71) = Train vs. Object, (10-72) = Train vs. Pedestrian, (10-73) = Train vs. Vehicle (10-74) = Train vs. MTA Vehicle, (10-75) = Derailment			

(The monthly accident charges listed represent only the expenses incurred in that particular month and are not a total repair of an individual accident.)

Service Delivery – AM/PM Pull-Outs May 2009

Cars Available for AM/PM Pull-Outs

Blue Line – Fleet Size 69 cars

- Weekday pull-out: 60 cars
- Weekend pull-out: 36 cars
- **Monthly Mileage: 402,884 miles**

Red Line - Fleet Size 104 cars

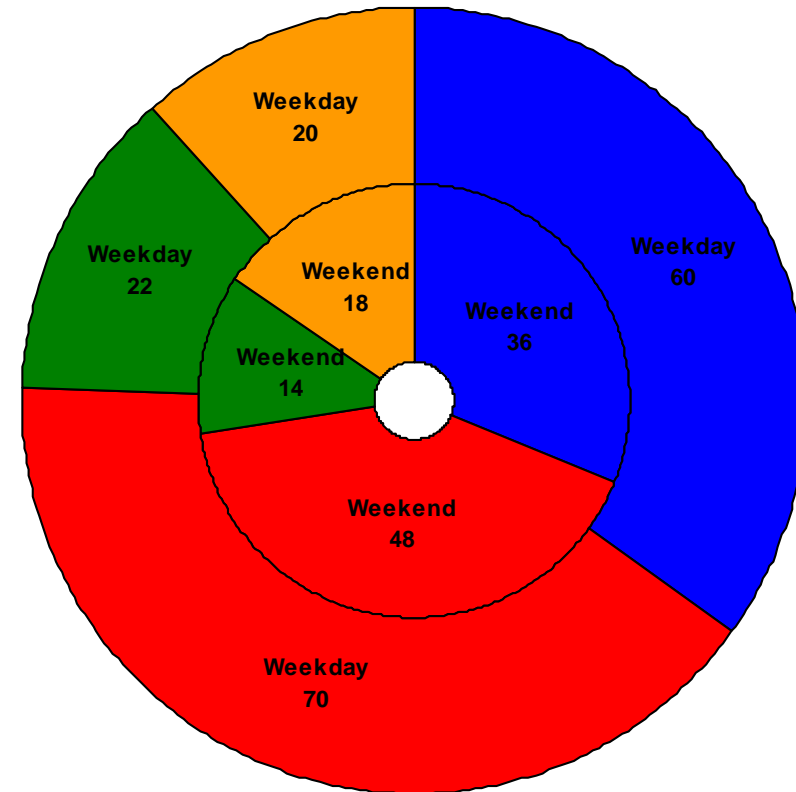
- Weekday pull-out: 70 cars
- Weekend pull-out: 48 cars
- **Monthly Mileage: 550,540 miles**

Green Line – Fleet Size 28 cars

- Weekday pull-out: 22 cars
- Weekend pull-out: 14 cars
- **Monthly Mileage: 215,933 miles**

Gold Line – Fleet Size 41 cars

- Weekday pull-out: 20 cars
- Weekend pull-out: 18 cars
- **Monthly Mileage: 153,633 miles**

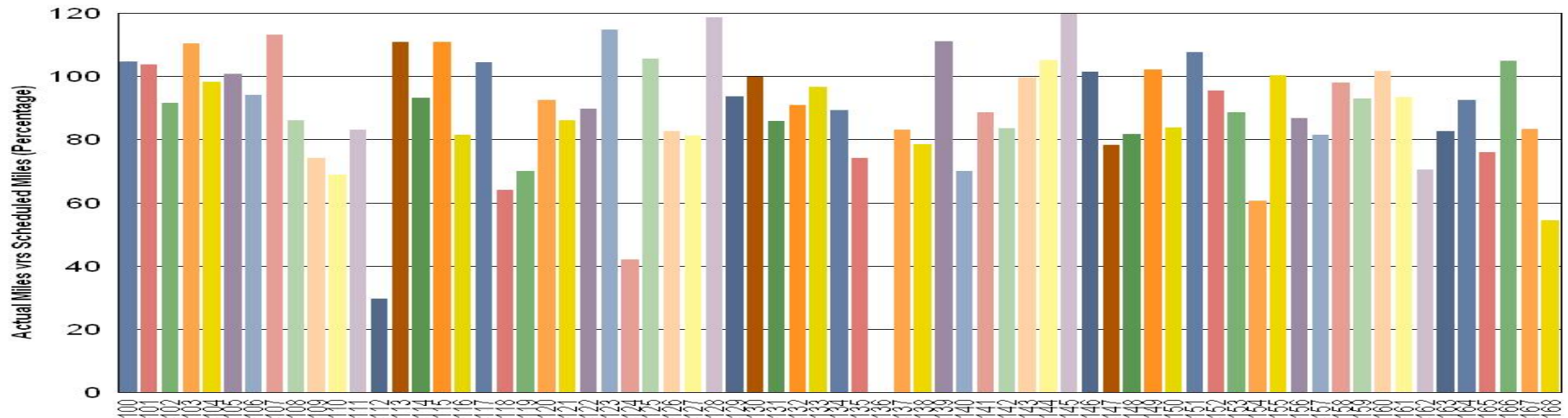


■ Blue Line ■ Red Line ■ Green Line ■ Gold Line

VEHICLE UTILIZATION

May 2009

Metro Blue Line



Blue Line Car 136 was out service for a defective MA and for roof repair.

Green Line Car 212 was out for door overhaul and Car 220 is under rebuilding A-Truck.

Percentage includes an average 4% mileage deduction for Yard mileage and Vehicle Testing.

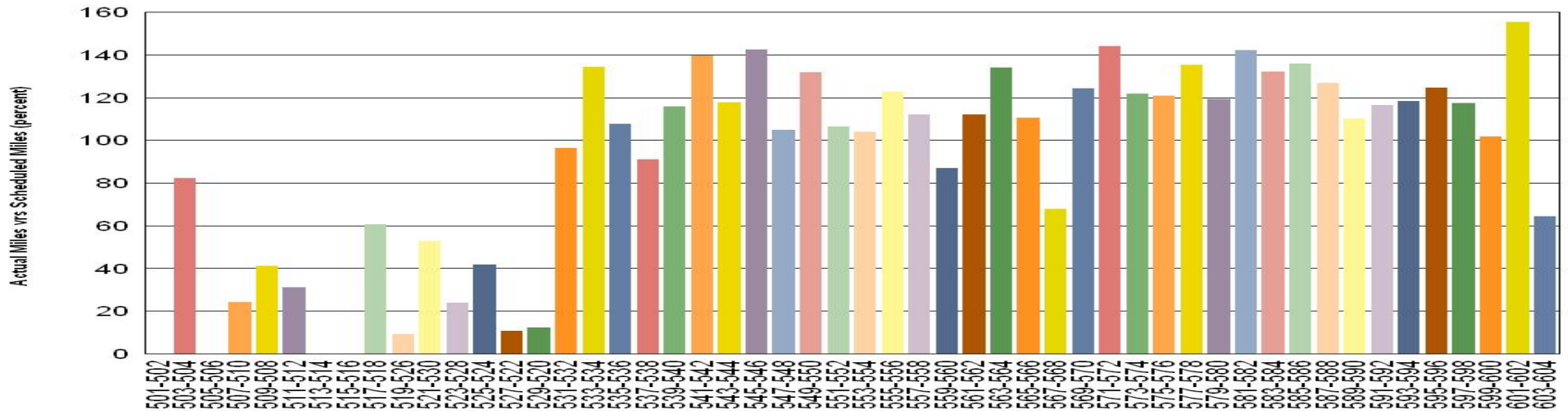
Metro Green Line



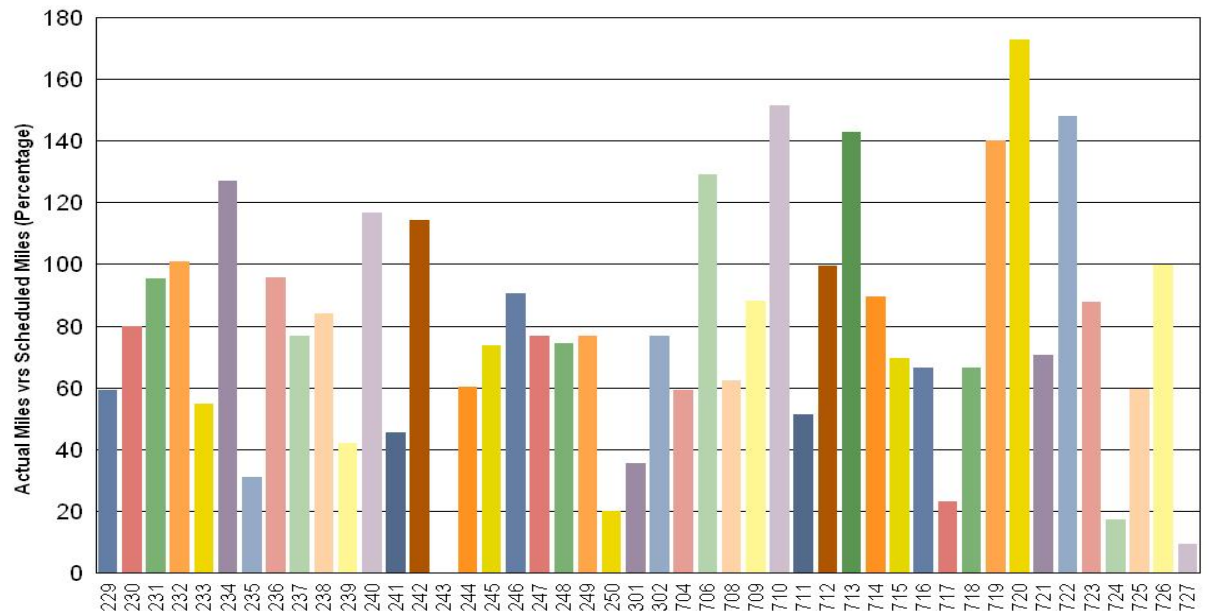
VEHICLE UTILIZATION

May 2009

Metro Red Line



Metro Gold Line



Red Line - The original 30 Base Buy cars are not being used to their fullest potential for various reasons such as propulsion, brake and coupling incident problems so the remaining Option Buy cars are forced to pick up the slack.

Gold Line - Car 243 is still in Sacramento having its fire damage repaired. Car 727 was just recently accepted.

Percentage includes an average 4% mileage deduction for Yard mileage and Vehicle Testing.

Mean Miles Between Failures (Major) May 2009

Miles Between Major Failures

Blue Line: 36,626 miles (11 Major Failures)

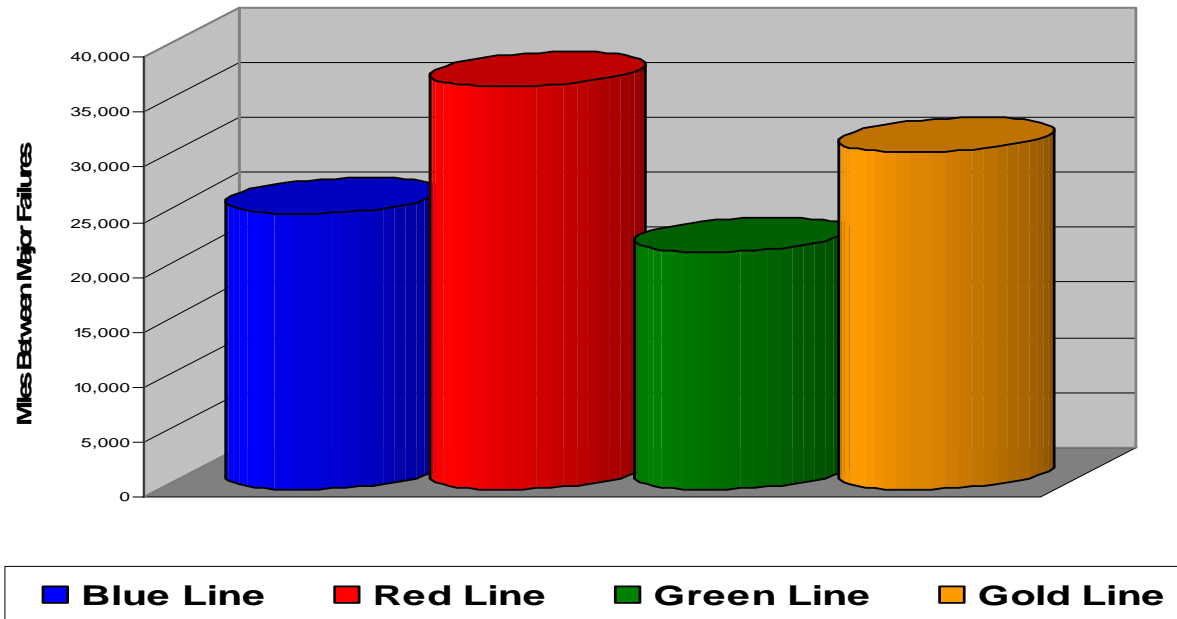
Red Line: 36,703 miles (15 Major Failures)

Green Line: 21,593 miles (10 Major Failures)

Gold Line: 30,727 miles (5 Major Failures)

Siemens P2000 36,247 miles (2 Major Failures)

AnsaldoBreda P2550 27,047 miles (3 Major Failures)



Major Failure: When a train does not complete its scheduled run or is more than 5 minutes late of its scheduled arrival time.

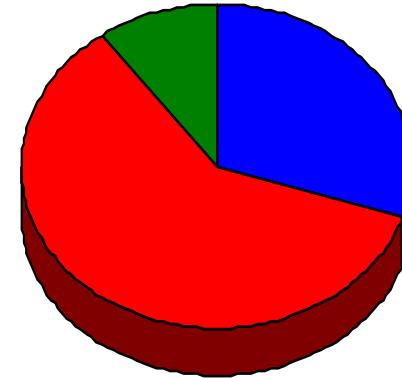
Repeat Failures May 2009

Metro Blue Line: 3 Repeat Failures

Metro Red Line: 6 Repeat Failures

Metro Green Line: 1 Repeat Failure

Metro Gold Line: 0 Repeat Failure



■ Blue Line ■ Red Line ■ Green Line ■ Gold Line

Repeater Car Details - May 2009

System	Blue Line		Red Line		Green Line		Gold Line	
	Car #	No. of Repeats	Car #	No. of Repeats	Car #	No. of Repeats	Car #	No. of Repeats
Brakes			565	1				
			568	1				
Door	153	3	566	1				
Propulsion/Dynamic Brake			511	3	220	1		
TOTALS	3		6		1		0	

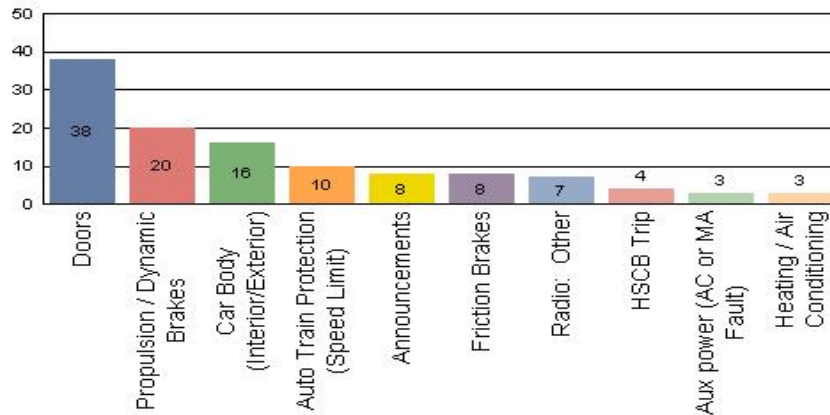
Repeat Failure: When a train car has two or more major repeat problems/failures.

Reported Incidents

May 2009

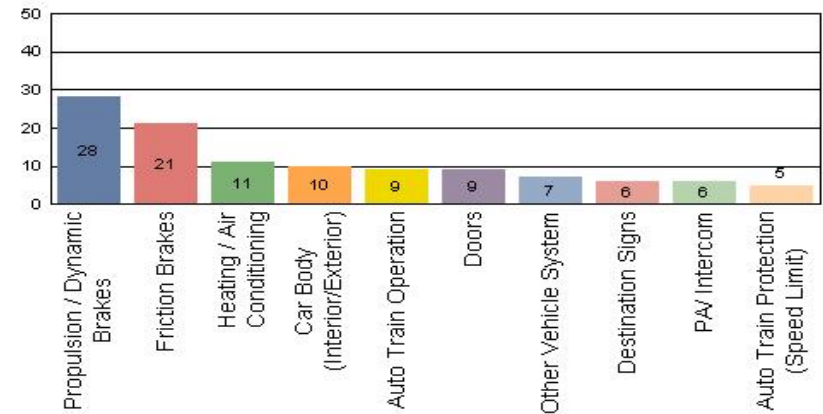
Metro Blue Line

Count of the Top 10 Incident Problems



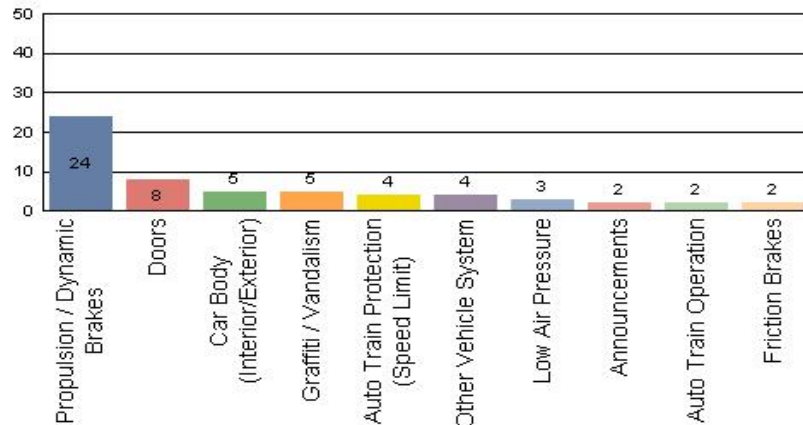
Metro Red Line

Count of the Top 10 Incident Problems



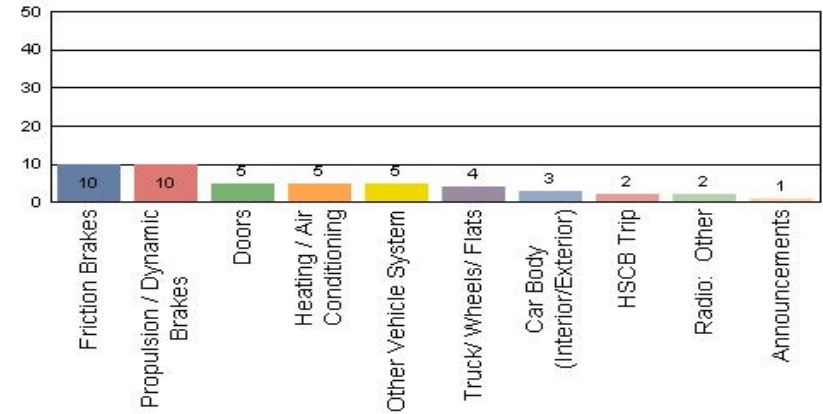
Metro Green Line

Count of the Top 10 Incident Problems



Metro Gold Line

Count of the Top 10 Incident Problems



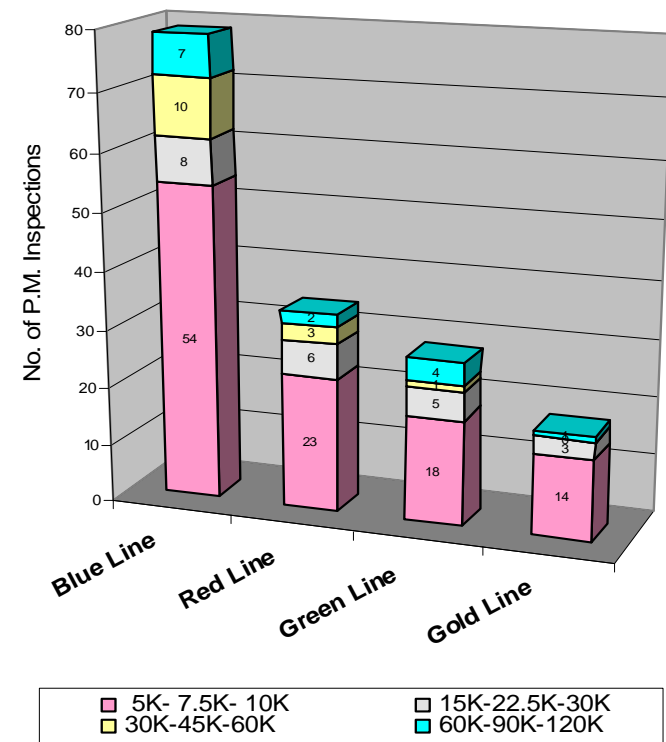
Preventative Maintenance Compliance

May 2009

Averages	Jun-08	Jul-08	Aug-08	Sep-08	Oct-08	Nov-08	Dec-08	Jan-09	Feb-09	Mar-09	Apr-09	May-09
Blue Line	97%	100%	100%	96%	100%	100%	100%	100%	100%	100%	100%	100%
Red Line	80%	100%	100%	100%	100%	100%	100%	100%	100%	100%	100%	100%
Green Line	100%	100%	100%	100%	100%	100%	100%	100%	93%	97%	100%	100%
Gold Line	100%	100%	100%	100%	100%	100%	100%	100%	100%	100%	100%	100%

May 2009 Preventative Maintenance Inspections

No. of P.M. Inspections	5K-7.5K-10K	15K-22.5K-30K	30K-45K-60K	60K-90K-120K	Totals	Percent Compliance
Blue Line	54	8	10	7	79	100%
Red Line	23	6	3	2	34	100%
Green Line	18	5	1	4	28	100%
Gold Line	14	3	0	1	18	100%
Totals:	109	22	14	14	159	100%



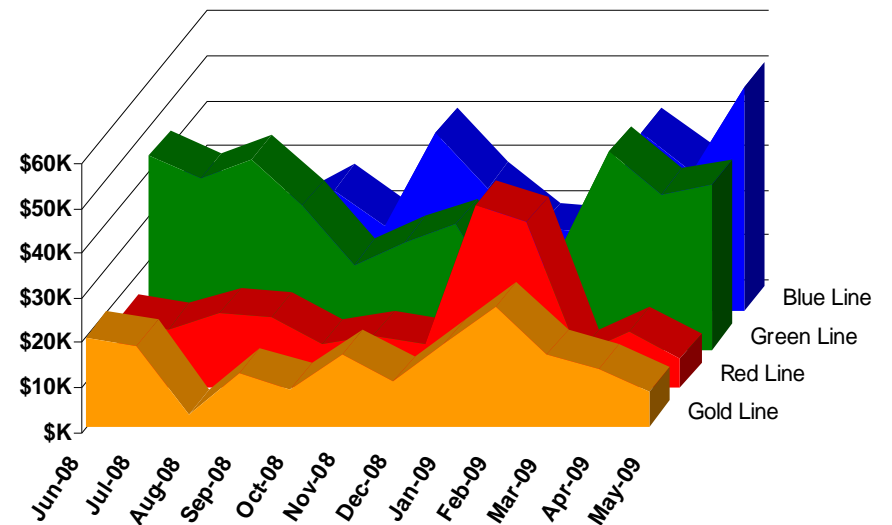
Vandalism & Graffiti Report

May 2009

Graffiti Costs - May 2009

	Jun-08	Jul-08	Aug-08	Sep-08	Oct-08	Nov-08	Dec-08	Jan-09	Feb-09	Mar-09	Apr-09	May-09	Year-to-Date
Blue Line	\$30K	\$19K	\$21K	\$27K	\$19K	\$40K	\$28K	\$18K	\$18K	\$40K	\$31K	\$50K	\$465K
Red Line	\$15K	\$13K	\$17K	\$16K	\$10K	\$11K	\$10K	\$41K	\$37K	\$8K	\$12K	\$7K	\$196K
Green Line	\$43K	\$38K	\$42K	\$32K	\$19K	\$24K	\$28K	\$9K	\$21K	\$44K	\$35K	\$37K	\$374K
Gold Line	\$20K	\$18K	\$2K	\$12K	\$8K	\$16K	\$10K	\$18K	\$27K	\$16K	\$13K	\$8K	\$167K
Totals:	\$109K	\$88K	\$83K	\$87K	\$56K	\$91K	\$76K	\$86K	\$103K	\$108K	\$91K	\$101K	\$1,079K

May 2009 Vandalism & Graffiti - All Rail				
	Qty	Labor	Materials	Totals
Windows replaced	175	\$11,718	\$20,915	\$ 32,633
Vandal Shields	605	\$14,590	\$6,947	\$ 21,537
Vandal Shields - Other	8	\$126	\$53	\$ 179
Seats Cleaned	4,394	\$7,683	\$3,439	\$ 11,122
Seats Replaced	86	\$2,710	\$3,484	\$ 6,194
Ext/Int Repairs	1,058	\$17,816	\$5,640	\$ 23,456
Exterior Graffiti Clean	84	\$5,269	\$757	\$ 6,026
Totals for May 2009		\$59,912	\$41,235	\$101,147



Vandalism & Graffiti Pictures

May 2009

A



B



A & B - Metro Blue Line

C



C - Metro Green Line

D



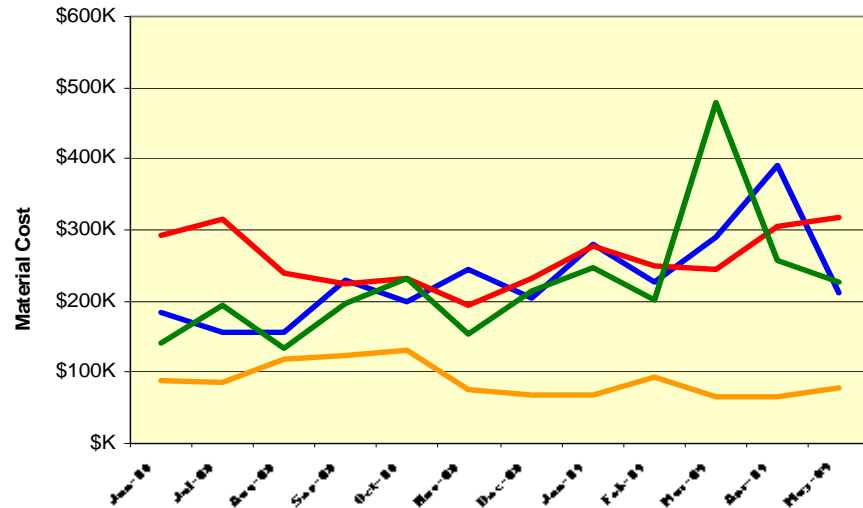
D - Metro Gold Line

Material and Labor Costs

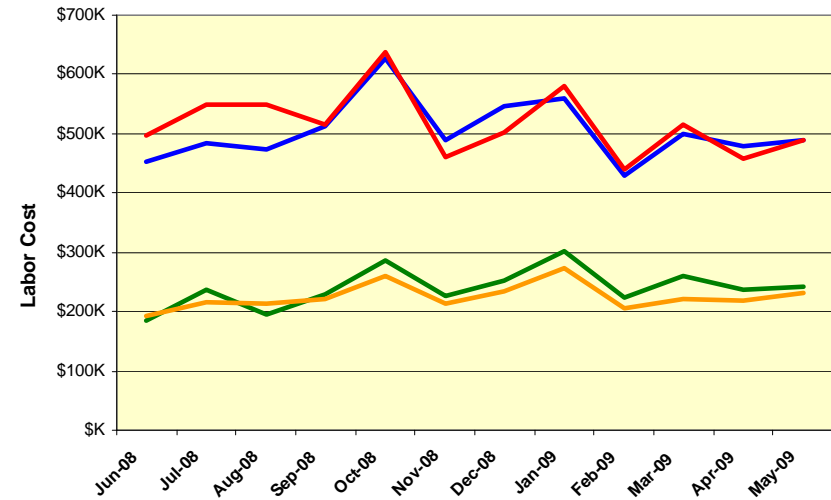
May 2009

MATERIALS	Jun-08	Jul-08	Aug-08	Sep-08	Oct-08	Nov-08	Dec-08	Jan-09	Feb-09	Mar-09	Apr-09	May-09	Totals
Blue Line	\$185K	\$156K	\$157K	\$230K	\$199K	\$244K	\$204K	\$279K	\$227K	\$289K	\$390K	\$211K	\$2,772K
Red Line	\$292K	\$314K	\$240K	\$225K	\$232K	\$193K	\$232K	\$277K	\$249K	\$244K	\$306K	\$318K	\$3,123K
Green Line	\$142K	\$194K	\$133K	\$195K	\$233K	\$153K	\$214K	\$248K	\$202K	\$479K	\$257K	\$226K	\$2,677K
Gold Line	\$88K	\$85K	\$118K	\$123K	\$132K	\$74K	\$68K	\$69K	\$92K	\$65K	\$66K	\$78K	\$1,058K
Totals	\$707K	\$750K	\$649K	\$774K	\$795K	\$665K	\$717K	\$873K	\$771K	\$1,077K	\$1,019K	\$834K	\$9,631K

Material Costs



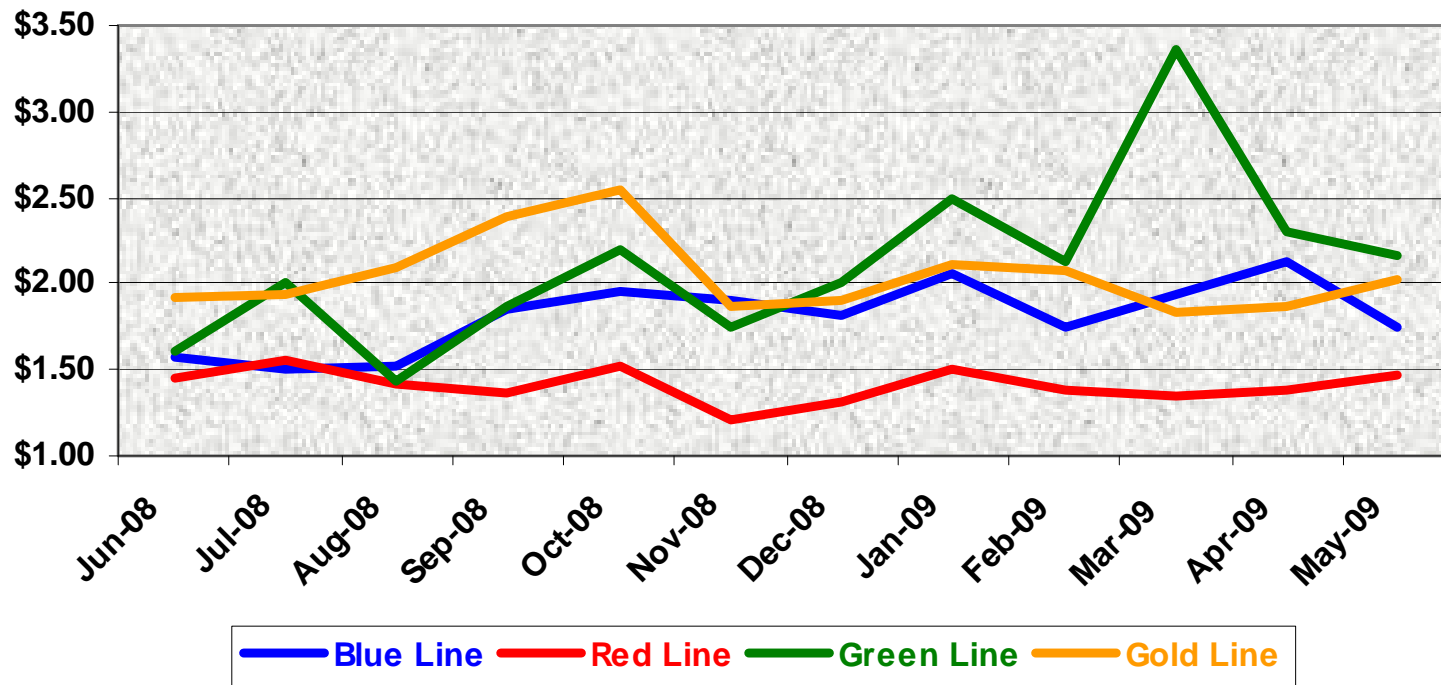
Labor Costs



LABOR	Jun-08	Jul-08	Aug-08	Sep-08	Oct-08	Nov-08	Dec-08	Jan-09	Feb-09	Mar-09	Apr-09	May-09
Blue Line	\$454K	\$483K	\$473K	\$513K	\$628K	\$489K	\$547K	\$560K	\$429K	\$501K	\$480K	\$490K
Red Line	\$496K	\$549K	\$548K	\$516K	\$637K	\$460K	\$503K	\$579K	\$440K	\$516K	\$459K	\$488K
Green Line	\$184K	\$237K	\$196K	\$229K	\$287K	\$227K	\$252K	\$302K	\$225K	\$261K	\$236K	\$241K
Gold Line	\$192K	\$217K	\$214K	\$220K	\$260K	\$214K	\$233K	\$272K	\$205K	\$221K	\$218K	\$232K
Totals	\$1,326K	\$1,486K	\$1,431K	\$1,479K	\$1,812K	\$1,390K	\$1,535K	\$1,713K	\$1,298K	\$1,498K	\$1,392K	\$1,452K

Cost Per Mile May 2009

Cost per mile:	Jun-08	Jul-08	Aug-08	Sep-08	Oct-08	Nov-08	Dec-08	Jan-09	Feb-09	Mar-09	Apr-09	May-09	Average
Blue Line	\$1.58	\$1.51	\$1.52	\$1.84	\$1.95	\$1.90	\$1.82	\$2.06	\$1.75	\$1.94	\$2.12	\$1.74	\$1.77
Red Line	\$1.45	\$1.55	\$1.42	\$1.36	\$1.53	\$1.20	\$1.31	\$1.50	\$1.39	\$1.35	\$1.38	\$1.46	\$1.41
Green Line	\$1.61	\$2.01	\$1.43	\$1.87	\$2.19	\$1.75	\$2.01	\$2.50	\$2.12	\$3.36	\$2.31	\$2.16	\$1.94
Gold Line	\$1.91	\$1.94	\$2.10	\$2.40	\$2.54	\$1.86	\$1.90	\$2.12	\$2.08	\$1.83	\$1.86	\$2.02	\$2.09



No facility costs are included

Rail Fleet Services Instruction

May 2009

Training classes completed during the month of May 2009

May 2009

Description	Status	Start	End	Course Hours	Student Count	Training Hours
Blue Line Training - LRV:						
1ST RESPONDER AWARENESS LVL TRAINING - HAZ MAT	Complete	5/5/2009	5/12/2009	2.5	91	227.5
SAFETY ORIENTATION: ON ALERT	Complete	5/16/2009	5/16/2009	2	1	2
PERSONAL PROTECTIVE EQUIPMENT	Complete	5/16/2009	5/16/2009	2	1	2
HAZARD COMMUNICATION: IDENTIFYING THE DANGERS	Complete	5/6/2009	5/16/2009	2	2	4
DISABILITIES AWARENESS TRAINING	Complete	5/19/2009	5/19/2009	2	3	6
SUSTAINABILITY AWARENESS TRAINING	Complete	5/20/2009	5/20/2009	2	3	6
Confined Space Entry (Video)	Complete	5/30/2009	5/30/2009	2	1	2
Hearing Protection (Video)	Complete	5/6/2009	5/6/2009	2	1	2
ETD EFFECTIVE TIME MANAGEMENT	Complete	5/27/2009	5/27/2009	3	1	3
RFS SIEMENS 2000 FRICTION BRAKES	Complete	5/13/2009	5/20/2009	40	3	120
RFS SIEMENS 2000 PROPULSION	Complete	5/4/2009	5/12/2009	80	3	240
RFS SIEMENS 2000 PANTOGRAPH	Complete	5/1/2009	5/1/2009	8	3	24

Total Blue Line Training (Hours): 638.5

Red Line Training (Breda A650 HRV):

RFS BRED A 650 HVAC	Continuing	5/22/2009		32	5	160
RFS BRED A 650 DOOR SYSTEMS	Complete	5/19/2009	5/21/2009	24	5	120
RFS BRED A 650 COUPLER	Complete	5/19/2009	5/19/2009	8	5	40
RFS BRED A 650 CURRENT COLLECT	Complete	5/12/2009	5/12/2009	8	5	40
RFS BRED A 650 TRUCKS	Complete	5/6/2009	5/11/2009	24	5	120
RFS BRED A 650 CAR BODY	Complete	5/5/2009	5/5/2009	8	5	40
RFS BRED A 650 MTO SYSTEMS	Complete	4/29/2009	5/1/2009	24	5	120
FALL PROTECTION	Complete	5/5/2009	5/5/2009	2	1	2
Confined Space Entry (Video)	Complete	5/4/2009	5/4/2009	2	1	2
DRUG-AND-ALCOHOL-FREE WORK ENVIRONMENT POLICY	Complete	5/19/2009	5/19/2009	4	1	4
MOP SEXUAL HARASSMENT PREVENTION AND TITLE VII	Complete	5/13/2009	5/13/2009	2	1	2
DISABILITIES AWARENESS TRAINING	Complete	5/19/2009	5/19/2009	2	1	2

Total Red Line Training (Hours): 652

Green Line Training (P2550 & P2000 LRVs):

RFS SIEMENS 2000 FRICTION BRAKES	Complete	5/13/2009	5/20/2009	40	3	120
RFS SIEMENS 2000 PROPULSION	Complete	5/4/2009	5/12/2009	80	3	240
RFS SIEMENS 2000 PANTOGRAPH	Complete	5/1/2009	5/1/2009	8	3	24
RFS SIEMENS 2000 US&S ATP/ATO/TWC	Complete	5/18/2009	5/22/2009	40	3	120
FRONTLINE SAFETY TRAINING	Complete	5/26/2009	5/26/2009	3	1	3
SUSTAINABILITY AWARENESS TRAINING	Complete	5/20/2009	5/27/2009	2	5	10

Total Green Line Training (Hours): 384

Gold Line Training (P2550 & P2000 LRVs):

ETD COMMUNICATING ONE-ON-ONE	Complete	5/13/2009	5/13/2009	3	1	3
------------------------------	----------	-----------	-----------	---	---	---

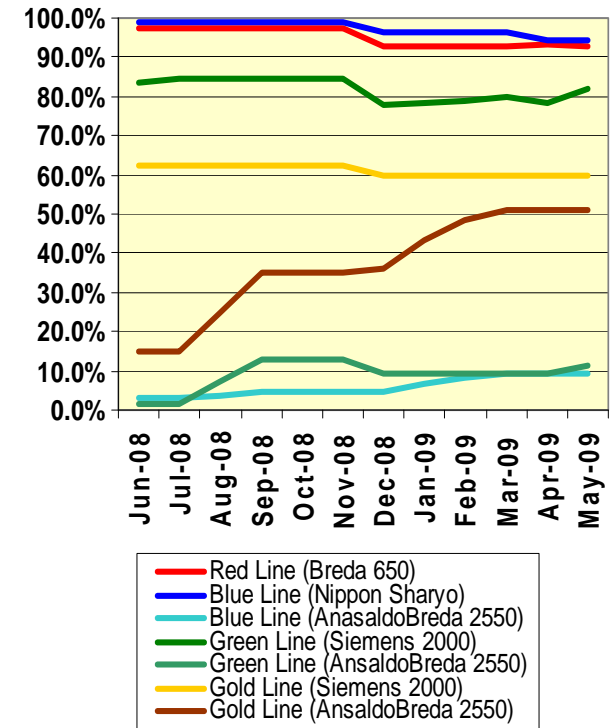
Total Gold Line Training (Hours): 3

Total Rail Fleet Services Instruction for the month of May 2009 (Hours): 1,677.5

Core Vehicle Training Completed:

	BLUE	RED	GREEN	GOLD
Percentage of core vehicle training complete:	94.5%	92.9%	82.2%	59.6%
AnsaldoBreda 2550 Training Completed:	9.2%	N/A	11.1%	51.1%
Average Specialist Rail Experience Level in Years:	10.0	8.0	7.1	7.9

Core Training Completed



Variations caused by new hires, employee transfers, & training completed



Metro

Absences vs. Overtime

May 2009

ABSENCE TYPE and HOURS	3940	3941	3942	3943	3944	Total
AWP-ABSENT W/O PERMISSION	0.00	9.75	0.00	0.00	0.00	9.75
BER-BEREAVEMENT	0.00	64.00	0.00	0.00	0.00	64.00
CTO-COMPENSATORY TIME OFF	8.00	284.77	308.50	255.00	101.42	957.69
CVA - CASUAL VACATION	52.00	16.00	736.00	16.00	8.00	828.00
DSL-DISABILITY LEAVE/LONG	0.00	344.00	520.00	0.00	184.00	1,048.00
EFH-EMG. FLOAT HOL.	0.00	0.00	120.00	40.00	8.00	168.00
ETO-EXCUSED TIME OFF	1.50	34.50	14.63	5.00	0.50	56.13
FML-FAMILY CARE LEAVE	0.00	345.06	168.00	66.50	80.00	659.56
HLF-HOLIDAY FLOATING	88.00	376.00	432.00	216.00	156.00	1,268.00
HOL-HOLIDAY LEGAL	48.00	520.00	456.00	144.00	136.00	1,304.00
JUR-JURY DUTY	0.00	40.00	48.00	0.00	42.00	130.00
LC1-LABOR CODE 233	24.00	286.60	253.67	128.00	72.00	764.27
LTI-OCCPIL/LONGTRM INJ LEAVE	0.00	168.00	352.00	0.00	0.00	520.00
MLN-MILITARY ABSENCE-UNPAID	0.00	0.00	0.00	8.00	0.00	8.00
OWP-OFF WITH PERMISSION	0.00	0.00	10.78	8.00	0.00	18.78
SCK-SICK PAY	0.00	212.00	202.75	96.00	112.00	622.75
SCW-SICK WITHOUT PAY	0.00	0.28	104.00	40.00	0.00	144.28
SUP-TEMPORARY SUPERVISOR	0.00	471.75	222.50	362.00	312.49	1,368.74
VAC-VACATION	0.00	661.17	8.00	334.17	487.67	1,491.01
Total	221.50	3,833.88	3,956.83	1,718.67	1,700.08	11,430.96
OVERTIME TYPE and HOURS	3940	3941	3942	3943	3944	Total
CTB-COMPENSATORY TIME TO BANK	8.00	47.29	33.00	0.00	26.00	114.29
OTP-PREM OVERTIME	181.75	912.64	1,285.03	992.79	840.51	4,212.72
WLO-Worked Lunch Overtime	0.00	20.00	86.00	26.50	19.50	152.00
Total	189.75	979.93	1,404.03	1,019.29	886.01	4,479.01
UNCOVERED ABSENCES	3940	3941	3942	3943	3944	Total
Absences FTE	1.28	22.12	22.83	9.92	9.81	65.95
OTP FTE	1.09	5.65	8.10	5.88	5.11	25.84
FTE Difference	0.18	16.47	14.73	4.03	4.70	40.11

