



Rail Fleet Services Monthly Report November 2009



Metro

Table of Contents

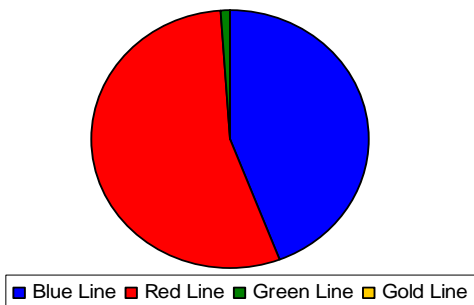
- Safety
 - Industrial Injuries Page 1
 - Rail Vehicle Accidents & Major Incidents Page 2
- Customer Service
 - Service Delivery – AM/PM Pull-Outs Page 3
 - Vehicle Utilization – Blue Line & Green Line Page 4
 - Vehicle Utilization – Red Line & Gold Line Page 5
 - Mean Miles Between Failures (Major) Page 6
 - Repeaters (Major) Page 7
- Business Processes
 - Incident Problems Page 8
 - Preventative Maintenance Compliance Page 9
- Finance
 - Vandalism & Graffiti Costs Page 10
 - Graffiti Pictures Page 11
 - Material & Labor Costs Page 12
 - Cost per mile Page 13
 - Budget Summary Page 14-15
 - Absence vs. Overtime Page 16
- Growth
 - Rail Fleet Service Training Page 17

Industrial Injuries – Lost Work Hours

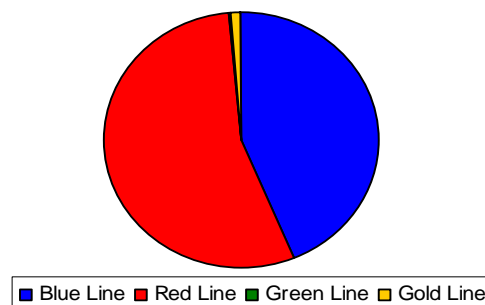
November 2009

	Dec-08	Jan-09	Feb-09	Mar-09	Apr-09	May-09	Jun-09	Jul-09	Aug-09	Sep-09	Oct-09	Nov-09	Year to Date
Blue Line	512	400	488	280	176	160	208	144	48	112	352	288	3,168
Red Line	360	280	264	312	296	344	352	328	456	328	344	356	4,020
Green Line	0	0	0	0	0	0	0	0	0	0	0	8	8
Gold Line	80	8	0	0	0	0	0	0	0	0	0	0	88
Totals	952	688	752	592	472	504	560	472	504	440	696	652	7,284

November 2009 - Lost Work Hours



Year-to-Date Lost Work Hours



	Employees		November 2009 Lost Work Hours			
	Assigned	Active	Service Attendant	Maint. Specialist	Body Repairer /Painter	November 2009 Total Hrs.
Blue Line	108	104	0	120	168	288
Red Line	105	101	356	0	0	356
Green Line	47	47	8	0	0	8
Gold Line	51	49	0	0	0	0
Totals	311	301	364	120	168	652
Total Lost Work Hours for 12-months = 7,284 hours						

Rail Vehicle Accidents & Major Incidents

November 2009

Repair Costs	Dec-08	Jan-09	Feb-09	Mar-09	Apr-09	May-09	Jun-09	Jul-09	Aug-09	Sep-09	Oct-09	Nov-09	Totals
Blue Line	\$20,456	\$79,318	\$3,716	\$9,500	\$111	\$1,480	\$189	\$9,262	\$0	\$2,122	\$0	\$38,396	\$164,550
Red Line	\$0	\$0	\$0	\$0	\$0	\$104,950	\$0	\$0	\$0	\$0	\$0	\$0	\$104,950
Green Line	\$0	\$0	\$0	\$0	\$0	\$0	\$2,481	\$0	\$0	\$0	\$0	\$0	\$2,481
Gold Line	\$0	\$0	\$0	\$1,231	\$3,235	\$0	\$189	\$0	\$0	\$14,310	\$0	\$3,538	\$22,503
Totals	\$20,456	\$79,318	\$3,716	\$10,731	\$3,346	\$106,430	\$2,859	\$9,262	\$0	\$16,432	\$0	\$41,934	\$294,484

Rail Vehicle Accident Costs - November 2009				
Metro Blue Main Line				
2009	Incident #	Problem code	Incident Description	Cost
Nov. 6	1347879	(10-72) Train vs. Ped	Train 5 SB hit a male pedestrian at Imperial Ped Xing	\$189
Nov. 13	1355503	(10-73) Train vs. Auto	Hit and run at 3rd street. Train 4, LRV's (131)-140-105, T-209, Pacific Station, Trak 1, n/b	\$600
Nov. 13	1356820	(10-73) Train vs. Auto	Train 23 reports he struck an auto- mobile at 41st Street, T-72. LRV (165B) 154, n/b, Track 1	\$17,374
Nov. 19	1364691	(10-72) Train vs. Ped	Train 4, car 117 A, Operator T-63 reports left outside mirror has struck a paton on the platform.	\$536
Nov. 20	1366041	(10-72) Train vs. Ped	Train 9, Cars (161) 130-154, T-268, Track 2 s/b, Wilmington grade crossing.	\$669
Nov. 22	1367570	(10-73) Train vs. Auto	Train 6, T-066, Cars 122-143-142, 55th Street Grade Xing	\$6,302
Nov. 24	1371660	(10-71) Train vs. Other	Train ran over metal sign, getting stuck in lead truck. Train 4, T-212, Cars 157B-158-128, San Pedro Station Track 2, s/b.	\$0
Metro Blue Yard				
Nov. 8	1347999	(10-75) Derailment	Operator T-201 reported a 10-75 at 0450 hours, operator instructed to hold at twin towers and lower pantographs, and stand by for supervisor.	\$12,726
TOTAL FOR METRO BLUE LINE				\$38,396
Metro Gold Main Line				
Nov. 1	1338983	(10-71) Train vs. Other	Train 10, Train Operator T-280, Car (709), 720, Civic Center Track 1, n/b.	\$189
Nov. 21	1367159	(10-72) Train vs. Ped.	Train 2, Train Operator T-87, Allen Station, Track 1, n/b. Notified Control that a man made contact with train.	\$0
Nov. 26	1373766	(10-73) Train vs. Auto	T-65, Track 2, 3rd/Rowan, Car 728B-709	\$3,349
TOTAL FOR METRO GOLD LINE				\$3,538
GRAND TOTAL				\$41,934
No accidents for , Red Line and Green Line				
(10-71) = Train vs. Object, (10-72) = Train vs. Pedestrian, (10-73) = Train vs. Vehicle (10-74) = Train vs. MTA Vehicle, (10-75) = Derailment				

Service Delivery – AM/PM Pull-Outs

November 2009

Cars Available for AM/PM Pull-Outs

Blue Line – Fleet Size 69 cars

- Weekday pull-out: 60 cars
- Weekend pull-out: 36 cars
- **Monthly Mileage: 394,860 miles**

Red Line – Fleet Size 104 cars

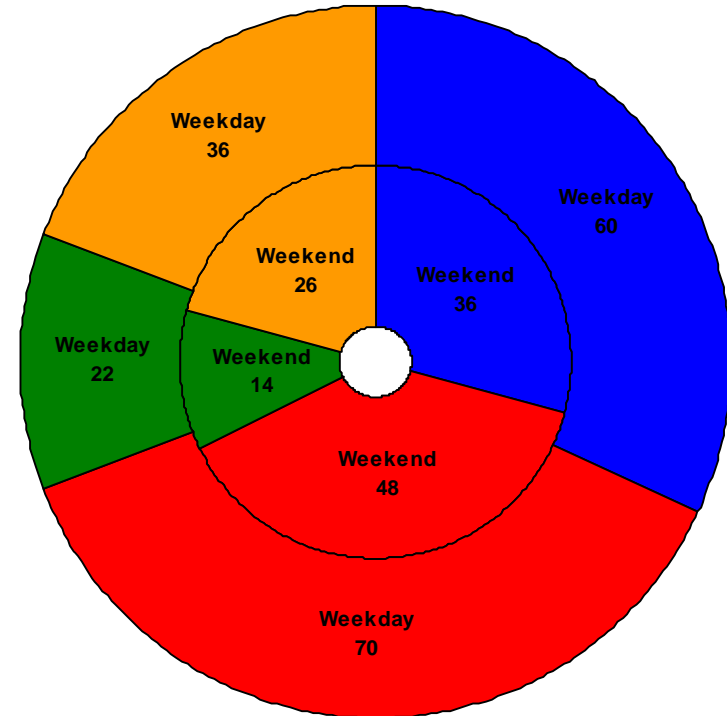
- Weekday pull-out: 70 cars
- Weekend pull-out: 48 cars
- **Monthly Mileage: 516,556 miles**

Green Line – Fleet Size 28 cars

- Weekday pull-out: 22 cars
- Weekend pull-out: 14 cars
- **Monthly Mileage: 211,604 miles**

Gold Line – Fleet Size 49 cars

- Weekday pull-out: 36 cars
- Weekend pull-out: 26 cars
- **Monthly Mileage: 223,313 miles**

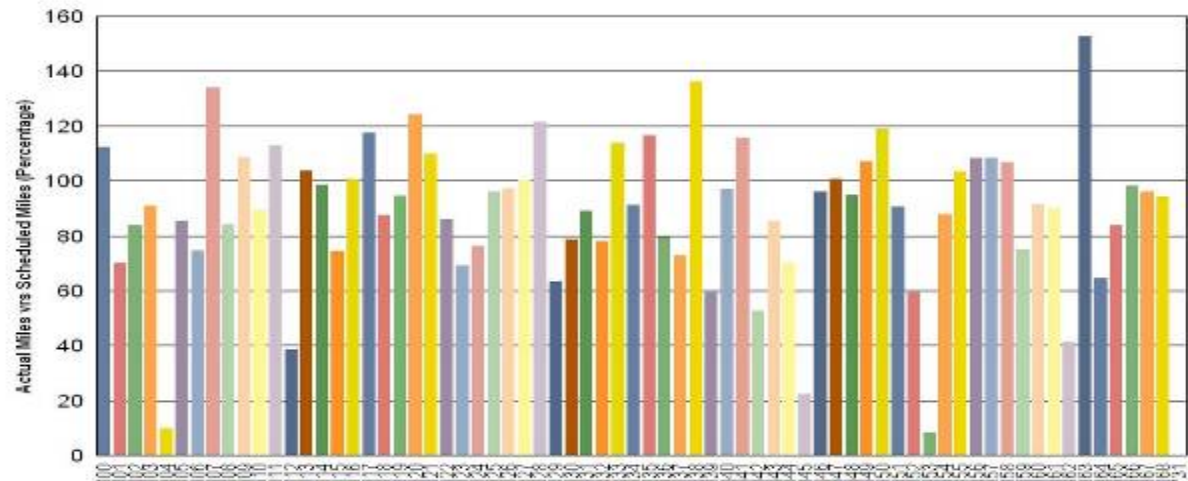


■ Blue Line ■ Red Line ■ Green Line ■ Gold Line

Vehicle Utilization

November 2009

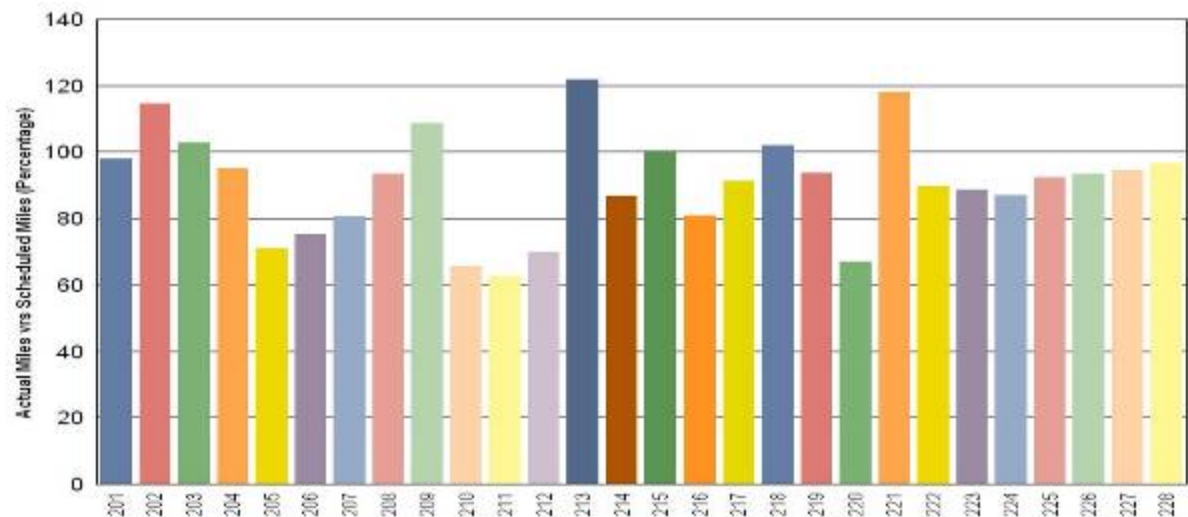
Metro Blue Line



Blue Line Car 104 was in the shop for articulation section overhaul. Car 145 was out of service for a 60K inspection & several unscheduled repairs. Car 153 was out of service in the body shop for roof and horn bracket repairs.

Note: Percentage includes an average 4% mileage deduction for Yard mileage and Vehicle Testing.

Metro Green Line



Green Line – has indicated a significant car availability for the month of November.

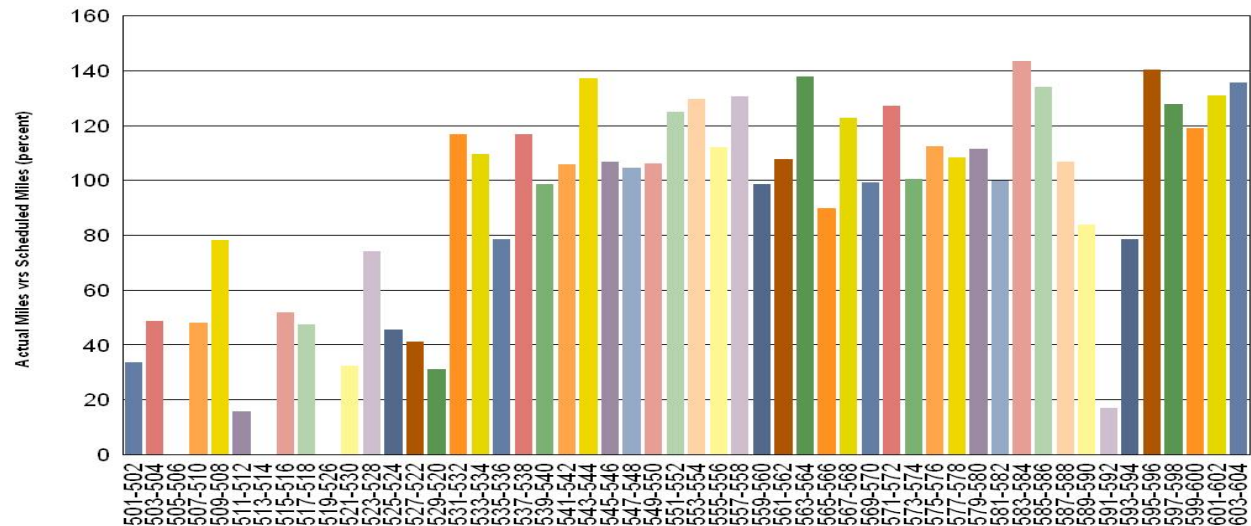
Vehicle Utilization

November 2009

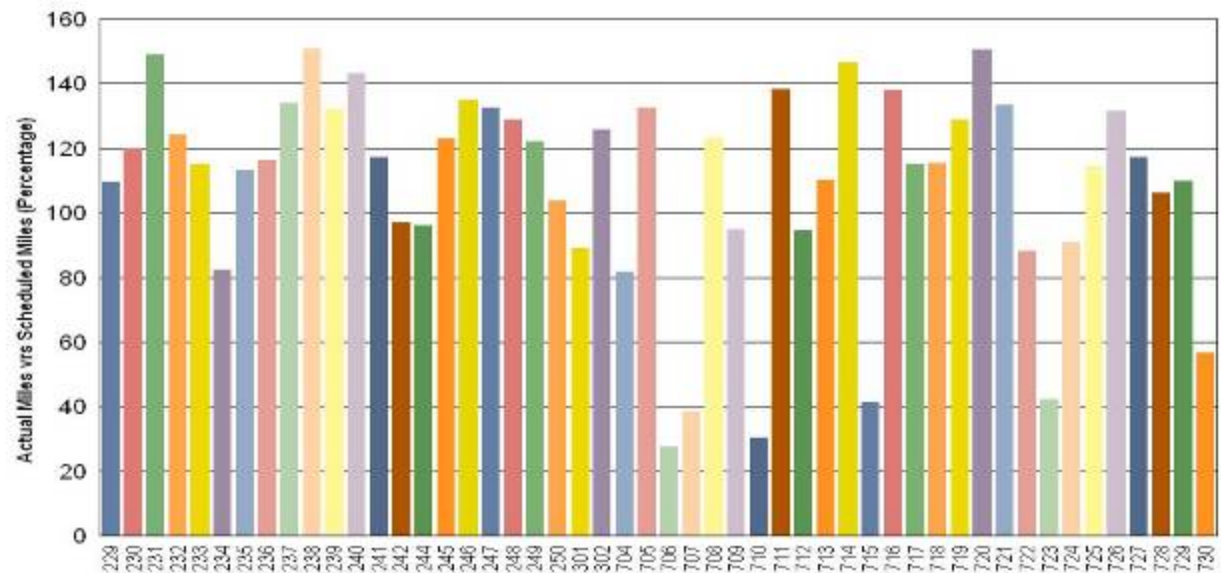
Red Line - The original 30 Base Buy cars are not being used to their fullest potential due to propulsion. Cars 591-592 is still in the shop for truck vibrations problems.

Percentage includes an average 4% mileage deduction for Yard mileage and Vehicle Testing.

Metro Red Line



Metro Gold Line



Mean Miles Between Failures (Major) November 2009

Miles Between Major Failures

Blue Line: 43,873 miles (9 Major Failures)

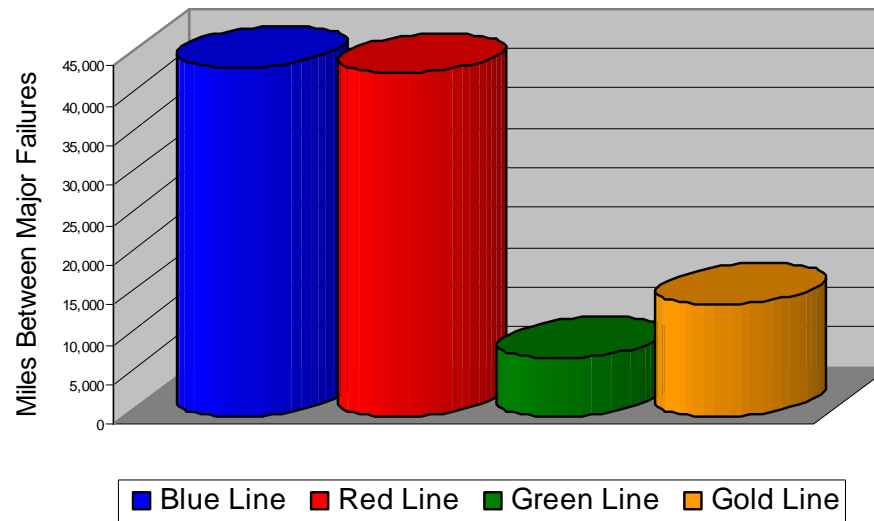
Red Line: 43,046 miles (12 Major Failures)

Green Line: 7,297 miles (29 Major Failures)

Gold Line: 13,957 miles (16 Major Failures)

Siemens P2000 18,581 miles (6 Major Failures)

AnsaldoBreda P2550 11,957 miles (10 Major Failures)



Major Failure: When a train does not complete its scheduled run or is more than 5 minutes late of its scheduled arrival time.

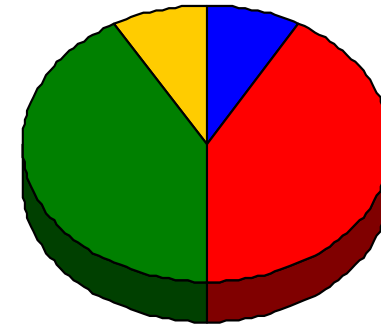
Repeat Failures November 2009

Metro Blue Line: 1 Repeat Failures

Metro Red Line: 5 Repeat Failures

Metro Green Line: 5 Repeat Failure

Metro Gold Line: 1 Repeat Failure



■ Blue Line ■ Red Line ■ Green Line ■ Gold Line

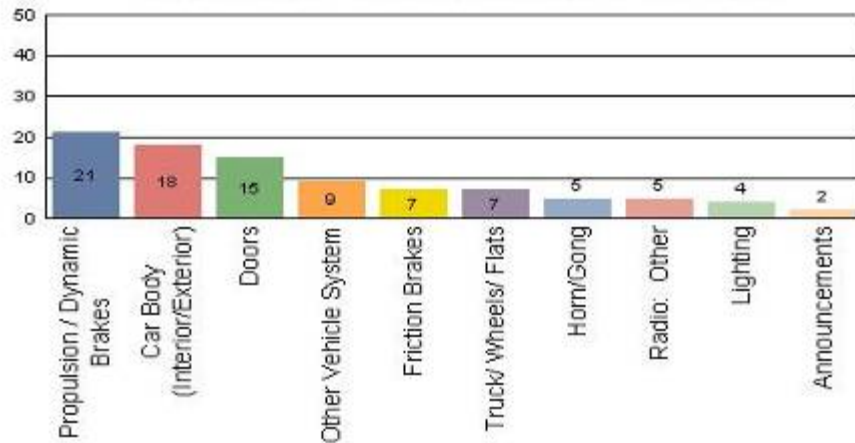
Repeater Car Details - November 2009								
System	Blue Line		Red Line		Green Line		Gold Line	
	Car #	Repeats	Car #	Repeats	Car #	Repeats	Car #	Repeats
ATP			537	3				
			594	1				
Auxiliary Power			512	1				
Car Body					214	1		
Doors	114	1			202	3	722	1
					207	1		
TOTALS	1		5		5		1	

Repeat Failure: When a train car has two or more major repeat problems/failures.

Reported Incidents November 2009

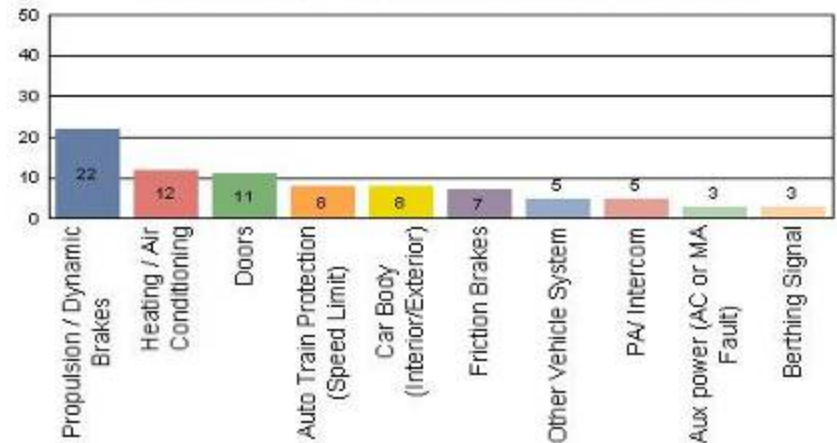
Metro Blue Line

Count of the Top 10 Incident Problems



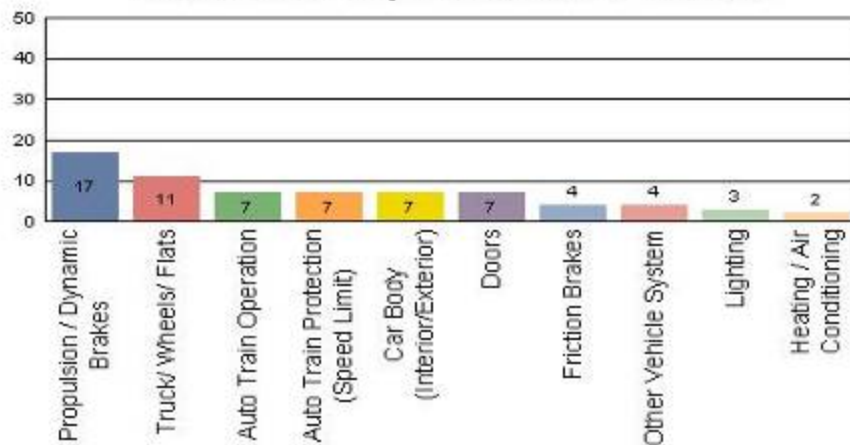
Metro Red Line

Count of the Top 10 Incident Problems



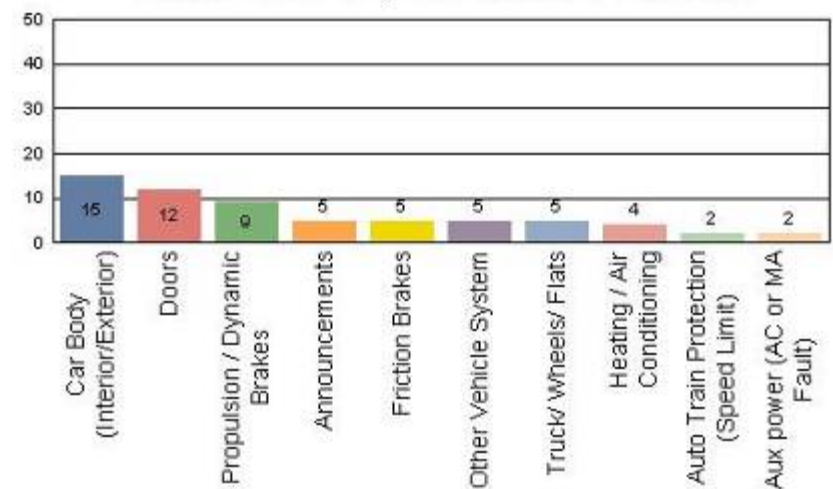
Metro Green Line

Count of the Top 10 Incident Problems



Metro Gold Line

Count of the Top 10 Incident Problems



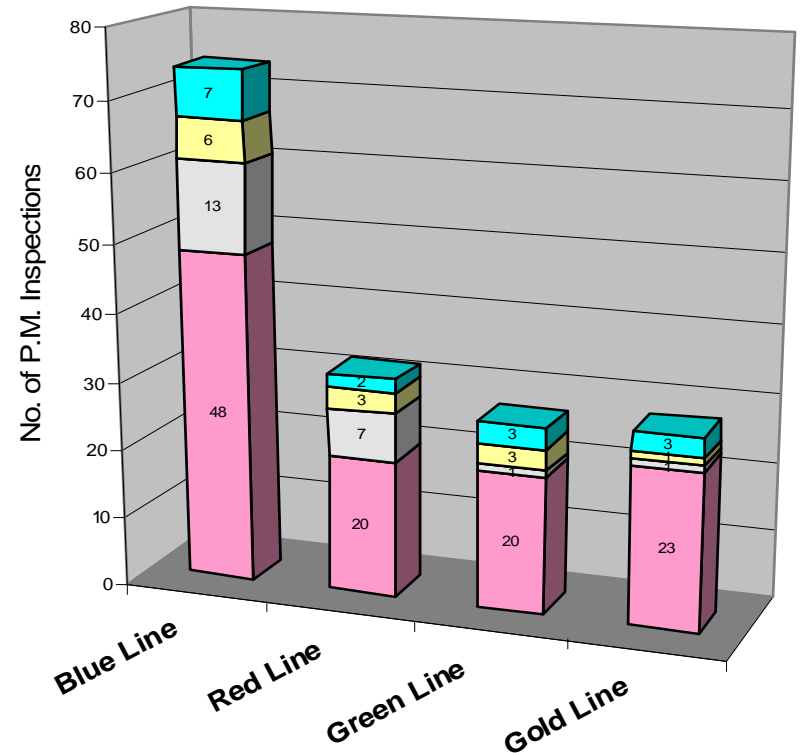
Preventative Maintenance Compliance

November 2009

Averages	Dec-08	Jan-09	Feb-09	Mar-09	Apr-09	May-09	Jun-09	Jul-09	Aug-09	Sep-09	Oct-09	Nov-09
Blue Line	100%	100%	100%	100%	100%	100%	100%	100%	100%	100%	100%	100%
Red Line	100%	100%	100%	100%	100%	100%	100%	94%	100%	100%	100%	100%
Green Line	100%	100%	93%	97%	100%	100%	100%	100%	100%	100%	100%	100%
Gold Line	100%	100%	100%	100%	100%	100%	100%	100%	100%	100%	100%	100%

November 2009 Preventative Maintenance Inspections

No. of P.M. Inspections	5K-7.5K-10K	15K-22.5K-30K	30K-45K-60K	60K-90K-120K	Totals	Percent Compliance
Blue Line	48	13	6	7	74	100%
Red Line	20	7	3	2	32	100%
Green Line	20	1	3	3	27	100%
Gold Line	23	1	1	3	28	100%
Totals:	111	22	13	15	161	100%

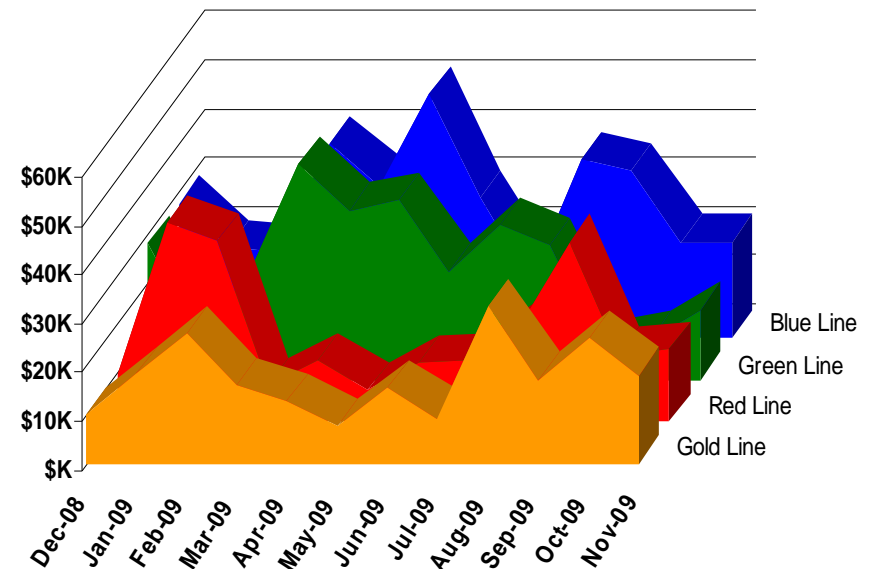


Vandalism & Graffiti Report

November 2009

	Dec-08	Jan-09	Feb-09	Mar-09	Apr-09	May-09	Jun-09	Jul-09	Aug-09	Sep-09	Oct-09	Nov-09	Year-to-Date
Blue Line	\$27,949	\$18,498	\$17,708	\$39,975	\$31,349	\$50,062	\$28,914	\$11,909	\$36,475	\$34,376	\$19,686	\$19,757	\$336,658
Green Line	\$28,128	\$40,809	\$37,117	\$44,211	\$34,775	\$36,921	\$22,307	\$31,788	\$27,501	\$6,774	\$8,355	\$14,915	\$333,601
Red Line	\$9,790	\$8,504	\$21,465	\$7,529	\$12,499	\$6,513	\$12,013	\$12,562	\$19,237	\$10,375	\$13,684	\$14,334	\$148,505
Gold Line	\$10,040	\$18,107	\$26,625	\$15,808	\$12,707	\$7,651	\$15,543	\$9,213	\$32,051	\$17,062	\$25,750	\$17,992	\$208,549
Totals	\$75,907	\$85,918	\$102,915	\$107,523	\$91,330	\$101,147	\$78,777	\$65,472	\$115,264	\$68,587	\$67,475	\$66,998	\$1,027,313

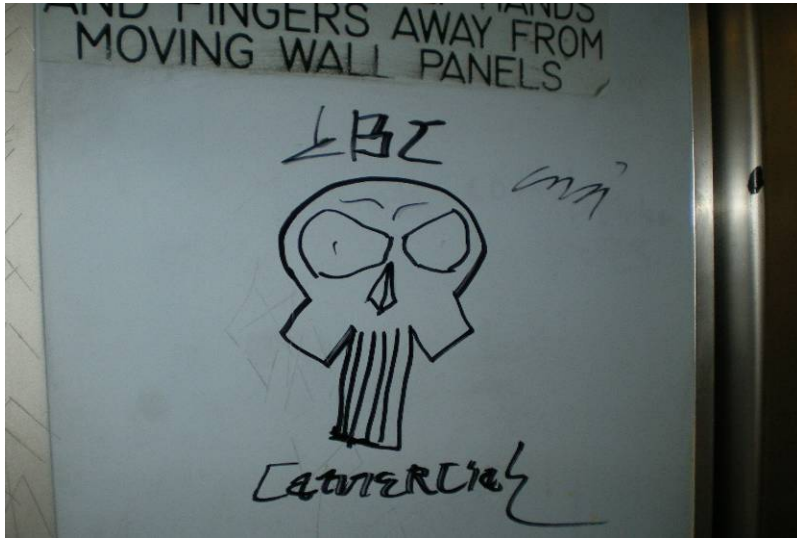
November 2009 Vandalism & Graffiti - All Rail				
	Qty	Labor	Materials	Totals
Windows replaced	40	\$3,906	\$10,993	\$14,899
Vandal Shields	347	\$9,062	\$4,707	\$13,768
Seats Cleaned	4,114	\$9,252	\$0	\$ 9,252
Seats Replaced	101	\$3,182	\$3,535	\$ 6,717
Ext/Int Repairs	1,111	\$16,459	\$1,517	\$17,976
Totals for November 2009		\$45,483	\$21,515	\$66,998



Vandalism & Graffiti Pictures

November 2009

A



B



A and B - Metro Blue Line

C



C - Metro Green Line

D



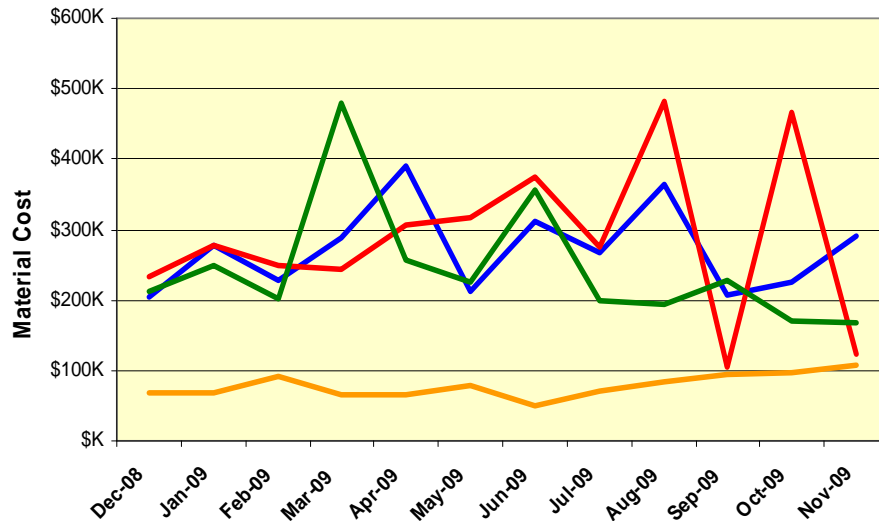
D - Metro Gold Line

Material and Labor Costs

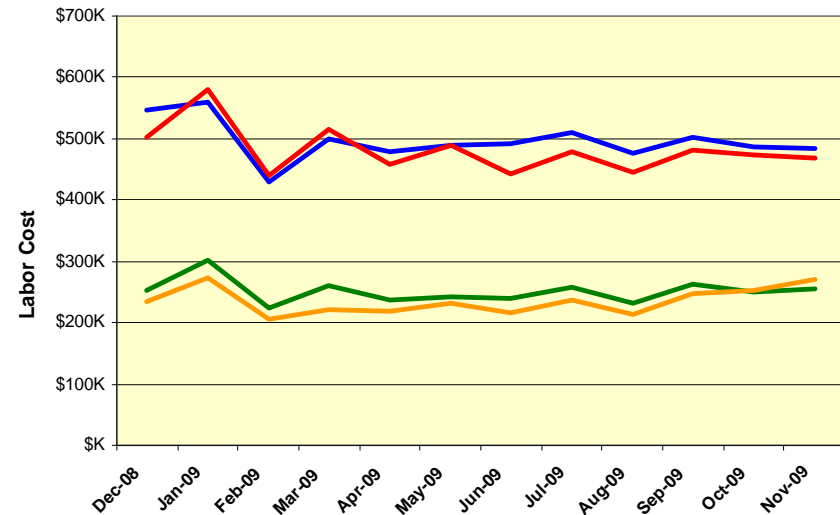
November 2009

MATERIALS	Dec-08	Jan-09	Feb-09	Mar-09	Apr-09	May-09	Jun-09	Jul-09	Aug-09	Sep-09	Oct-09	Nov-09	Totals
Blue Line	\$204K	\$279K	\$227K	\$289K	\$390K	\$211K	\$311K	\$268K	\$364K	\$207K	\$226K	\$290K	\$3,695K
Red Line	\$232K	\$277K	\$249K	\$244K	\$306K	\$318K	\$375K	\$275K	\$483K	\$104K	\$467K	\$123K	\$3,940K
Green Line	\$214K	\$248K	\$202K	\$479K	\$257K	\$226K	\$356K	\$200K	\$195K	\$229K	\$170K	\$169K	\$3,240K
Gold Line	\$68K	\$69K	\$92K	\$65K	\$66K	\$78K	\$50K	\$71K	\$85K	\$94K	\$96K	\$106K	\$1,102K
Totals	\$717K	\$873K	\$771K	\$1,077K	\$1,019K	\$834K	\$1,092K	\$814K	\$1,126K	\$634K	\$958K	\$688K	\$10,329K

Material Costs



Labor Costs

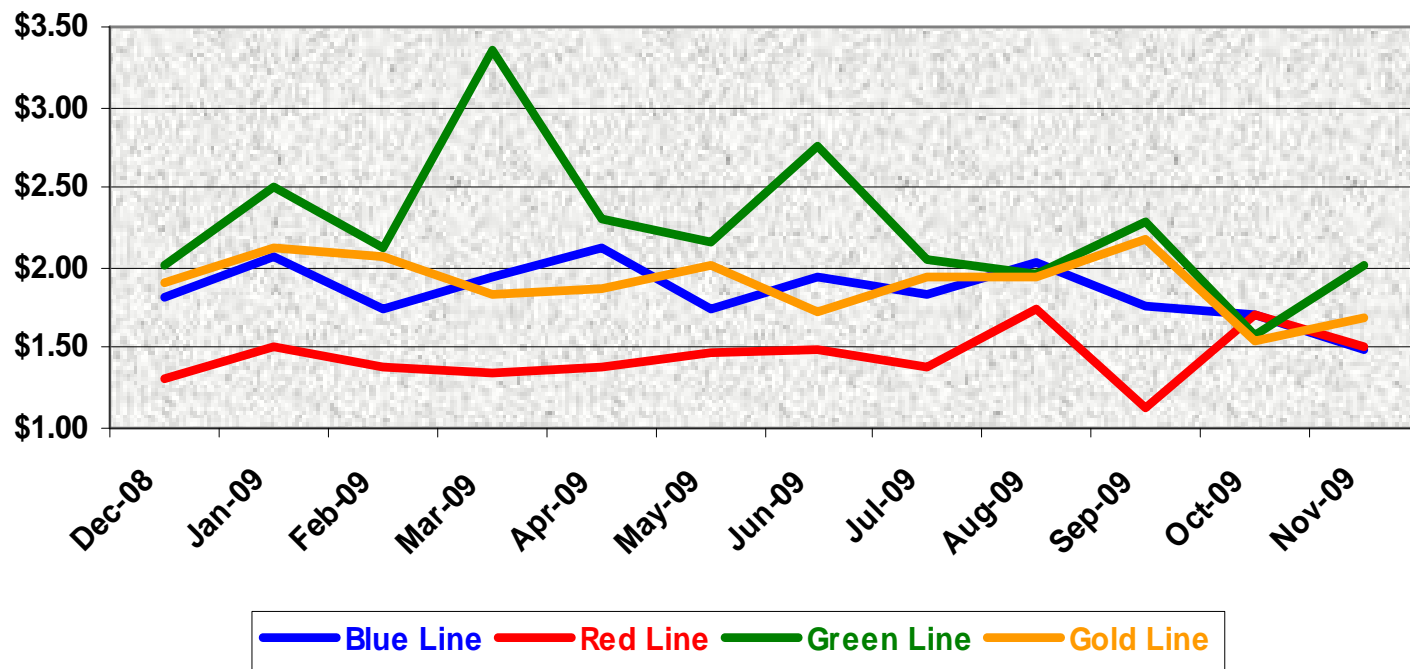


LABOR	Dec-08	Jan-09	Feb-09	Mar-09	Apr-09	May-09	Jun-09	Jul-09	Aug-09	Sep-09	Oct-09	Nov-09
Blue Line	\$547K	\$560K	\$429K	\$501K	\$480K	\$490K	\$492K	\$510K	\$476K	\$501K	\$487K	\$483K
Red Line	\$503K	\$579K	\$440K	\$516K	\$459K	\$488K	\$443K	\$478K	\$445K	\$481K	\$475K	\$468K
Green Line	\$252K	\$302K	\$225K	\$261K	\$236K	\$241K	\$238K	\$257K	\$232K	\$264K	\$249K	\$256K
Gold Line	\$233K	\$272K	\$205K	\$221K	\$218K	\$232K	\$217K	\$238K	\$213K	\$247K	\$251K	\$272K
Totals	\$1,535K	\$1,713K	\$1,298K	\$1,498K	\$1,392K	\$1,452K	\$1,390K	\$1,483K	\$1,365K	\$1,493K	\$1,462K	\$1,479K



Cost Per Mile November 2009

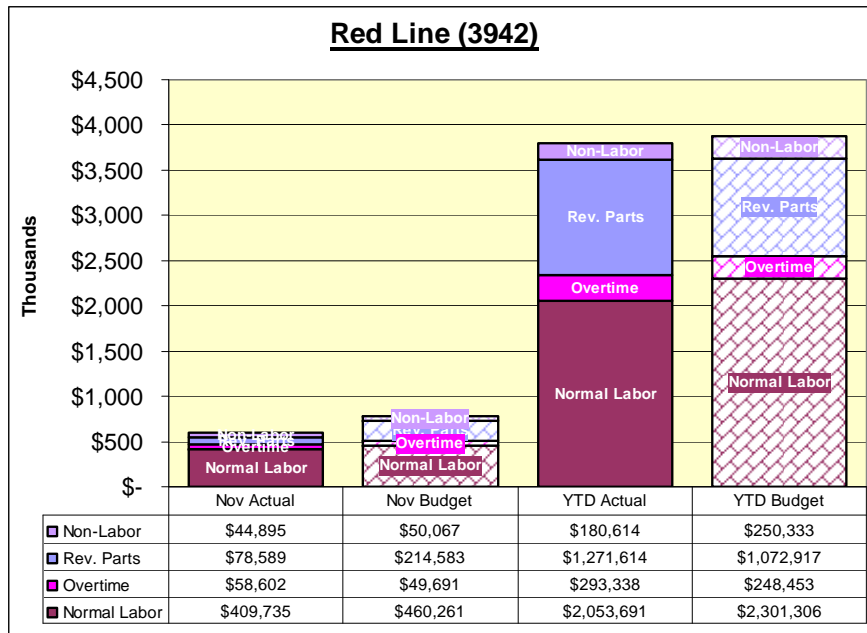
Cost per mile:	Dec-08	Jan-09	Feb-09	Mar-09	Apr-09	May-09	Jun-09	Jul-09	Aug-09	Sep-09	Oct-09	Nov-09	Average
Blue Line	\$1.82	\$2.06	\$1.75	\$1.94	\$2.12	\$1.74	\$1.95	\$1.83	\$2.04	\$1.76	\$1.71	\$1.50	\$1.85
Red Line	\$1.31	\$1.50	\$1.39	\$1.35	\$1.38	\$1.46	\$1.49	\$1.37	\$1.75	\$1.12	\$1.71	\$1.50	\$1.44
Green Line	\$2.01	\$2.50	\$2.12	\$3.36	\$2.31	\$2.16	\$2.75	\$2.05	\$1.97	\$2.29	\$1.59	\$2.01	\$2.26
Gold Line	\$1.90	\$2.12	\$2.08	\$1.83	\$1.86	\$2.02	\$1.73	\$1.94	\$1.94	\$2.17	\$1.55	\$1.69	\$1.90



No facility costs are included

RFS Monthly Budget Summary

November 2009

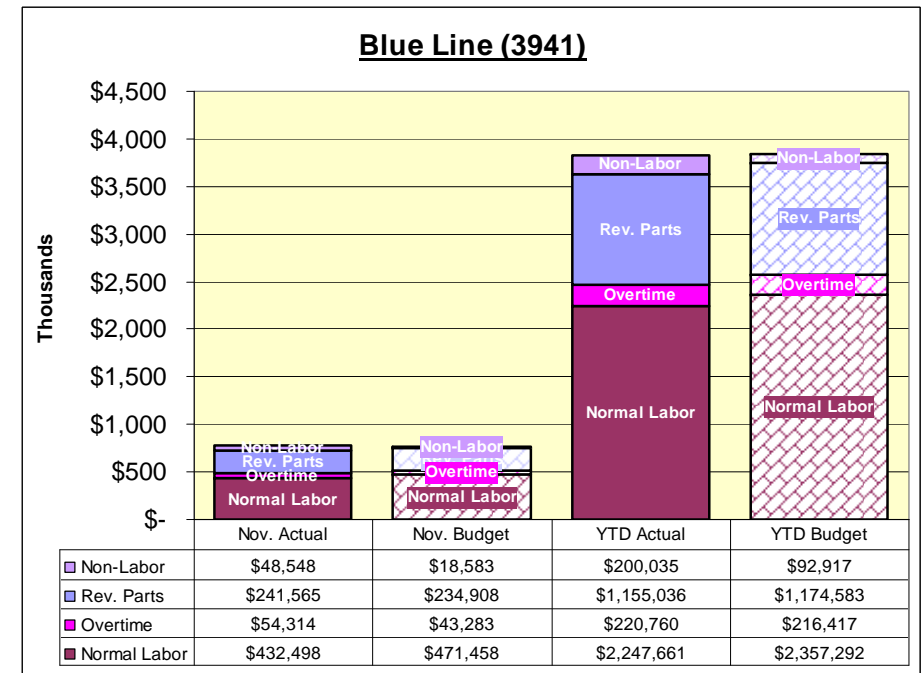


Red Line Explanations:

- The November overtime is higher than the monthly budget by 18%. It is due to the holiday work expense (2.5 times) on Thanksgiving is charged to the overtime premium. YTD difference indicates an 18% higher. Normal Labor Actual is lower than the monthly budget by 11% and YTD difference is 10.7% lower than YTD Budget.
- The November revenue part's consumption is 63% lower than monthly budget. YTD difference is 18.5% higher. In November, major usage is on manual controller, wheels and traction motor. Many GTOs were repaired and turned back into the Storeroom causing the actual consumption cost to be lower.
- Note:
 - Nov. Normal Labor = \$50,526 under budget (UB)
 - YTD Normal Labor = \$247,615 (UB)
 - Nov. OT = \$8,911 over budget (OB)
 - YTD OT = \$44,885 (OB)
 - Nov. Total Labor = \$41,615 (UB)
 - YTD Total Labor = \$202,730 (UB)
 - Total YTD Labor/Non-labor = \$73,752 (UB)

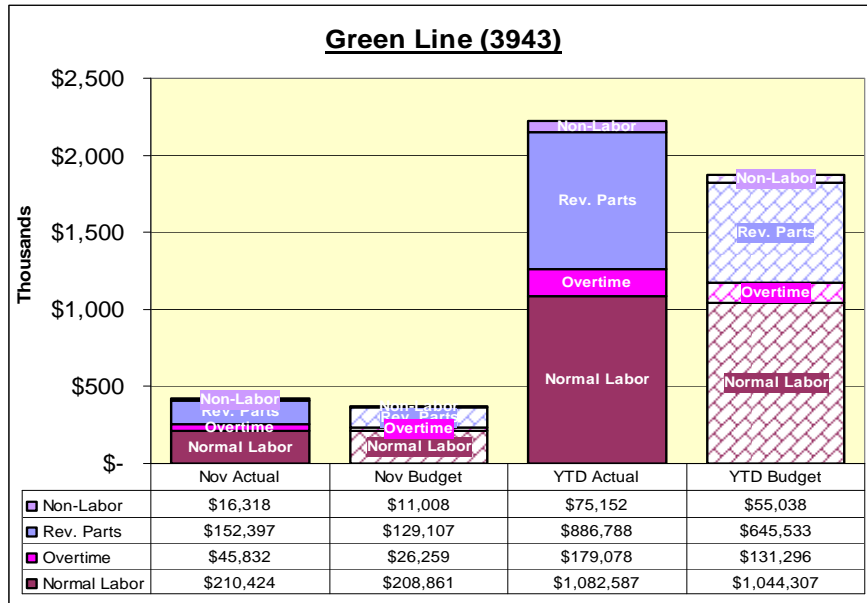
Blue Line Explanations:

- Overtime actual indicate an increase of 20.31% from monthly budget, which was due to the Thanksgiving Holiday and the cost to pay the premium Holiday Worked (HWK) during November.
- Non-Labor actual display an increase of 61.72% from November budget with an overall increase of 53.55% for YTD Budget. The increase is due to the purchase of two new Rotoclone ventilation fans for the Blue Line Blowdown shop, the purchase of new handheld radios for the Blue Line crews. Also, the negative variance is due to the continued Blue Line Overhaul Program expense to keep the Blue Line rail cars safe and reliable.
 - Nov. Normal Labor = \$28,825 under budget (UB)
 - YTD Normal Labor = \$44,742 (UB)
 - Nov. OT = \$2,953 over budget (OB)
 - YTD OT = \$7,725 (UB)
 - Nov. Total Labor = \$31,348 (UB)
 - YTD Total Labor = \$116,568 (UB)
 - Total YTD Labor/Non-Labor= \$28,953 (UB)



RFS Monthly Budget Summary

November 2009



Green Line Explanations:

- Overtime actual indicates an increase of 42.7% from monthly budget with and an overall increase of 26.68% from YTD Budget. Increase is due to supporting Vehicle #243 reactivation and responding to light rail mainline failures and overhaul projects. The YTD Actual is due to shop preparations for shop tours and Sharp-2008 audit, Car 243 support, and major efforts in troubleshooting mainline LRV failures.
- Revenue parts exceeded monthly budget by 15.28% and YTD Budget by 27.21%. The increase is due to parts/replacement costs.
- Non-Labor shows an increase of 32.54% for November Budget and an overall increase of 26.76% for YTD Budget. The increase is due to parts/replacement costs.

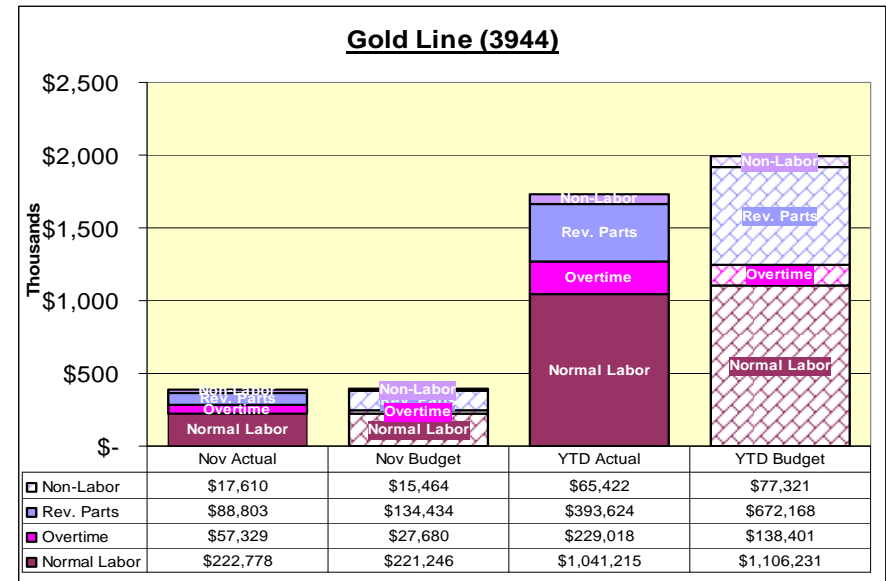
Note:

- Nov. Normal Labor = \$1,563 over budget (OB)
- YTD Normal Labor = \$38,281 (OB)
- Nov. OTP = \$19,572 (OB)
- YTD OTP = \$47,782 (OB)
- Nov. Total Labor = \$21,135 (OB)
- YTD Total Labor = \$(86,062) (OB)
- Total YTD Labor/Non-Labor = \$347,432 (OB)

Gold Line Explanations:

- Gold Line overtime indicates an monthly increase of 51.72% for November with an overall yearly increase of 39.57% from YTD Budget. The increase in overtime is attributed to fleet size, a 36 car roll out schedule, and continued support for MGLEE Grand Opening, testing and special events.
- Revenue Parts monthly budget shows a decrease of 51.38% for November with an overall decrease of 70.76% for YTD Budget. Our fleet is mixed with 23 Siemens and 27 Ansaldo-Breda cars. We have not started the Siemens overhaul leaving the M/S Rev Parts budget to remain under budget. Also, the Ansaldo-Breda cars remain under warranty.
- Non-Labor indicates a slight increase of 12.18% for November with a decrease of 18.19% for overall YTD Budget. The purchase of torque wrenches, unable to be repaired for calibration, tooling calibration, office supplies, and the repair and modification of Friction Brake Rings caused the increase but overall we under budget.

- Note:
- Nov. Normal Time = \$1,532 over budget (OB)
 - YTD Normal Time = \$65,016 under budget (UB)
 - Nov. OTP = \$29,649 (OB)
 - YTD OTP = \$138,401 (OB)
 - Nov. Non-Labor = \$2,146 (OB)
 - YTD Non-Labor = \$11,899 (UB)
 - November Labor/Non-Labor = \$20,360 (UB)
 - Total YTD Labor/Non-Labor = \$330,559 (UB)



Absences vs. Overtime

November 2009

ABSENCE TYPE and HOURS	3940	3941	3942	3943	3944	Total
AWP-ABSENT W/O PERMISSION	0.00	0.82	0.00	0.00	16.00	16.82
BER-BEREAVEMENT	0.00	32.00	40.00	0.00	0.00	72.00
CTO-COMPENSATORY TIME OFF	0.00	240.50	104.00	120.00	80.00	544.50
CVA - CASUAL VACATION	8.00	4.00	825.75	8.00	32.00	877.75
DSL-DISABILITY LEAVE/LONG	0.00	552.00	8.00	0.00	304.00	864.00
EFH-EMG. FLOAT HOL.	0.00	16.00	48.00	0.00	32.00	96.00
ETO-EXCUSED TIME OFF	0.50	26.30	13.00	4.00	0.00	43.80
FML-FAMILY CARE LEAVE	32.00	284.00	204.00	438.52	8.00	966.52
HLF-HOLIDAY FLOATING	48.00	336.00	260.00	64.00	168.00	876.00
HNP-HOLIDAY NOT PAID	0.00	8.00	8.00	0.00	8.00	24.00
HOL-HOLIDAY LEGAL	48.00	496.00	480.00	128.00	136.00	1,288.00
II-INDUSTRIAL INJURY	0.00	288.00	4.00	8.00	0.00	300.00
JUR-JURY DUTY	0.00	8.00	16.00	0.00	24.00	48.00
LC1-LABOR CODE 233	0.00	149.50	174.33	64.00	32.00	419.83
LTI-OCCPIL/LONGTRM INJ LEAVE	0.00	0.00	352.00	0.00	0.00	352.00
MLN-MILITARY ABSENCE-UNPAID	0.00	0.00	0.00	8.00	0.00	8.00
OWP-OFF WITH PERMISSION	0.00	0.00	24.00	0.00	0.00	24.00
RTO-REQUESTED TIME OFF-NO PAY	0.00	40.00	0.00	9.03	0.00	49.03
SCK-SICK PAY	0.00	243.77	168.00	56.00	96.00	563.77
SCW-SICK WITHOUT PAY	0.00	16.00	16.00	8.00	24.00	64.00
SUP-TEMPORARY SUPERVISOR	0.00	263.10	79.00	234.00	205.00	781.10
VAC-VACATION	20.00	712.06	200.00	248.00	292.00	1,472.06
Total Absence Hours	156.50	3,716.05	3,024.08	1,397.55	1,457.00	9,751.18
Number of Work Force	22.00	108.00	105.00	47.00	51.00	333.00
Full Work Force hours/month	3,812.60	18,716.40	18,196.50	8,145.10	8,838.30	57,708.90
Absence as a % of Work Force	4%	20%	17%	17%	16%	17%
OVERTIME TYPE and HOURS	3940	3941	3942	3943	3944	Total
CTB-COMPENSATORY TIME TO BANK	0.00	278.72	140.00	82.66	72.00	573.38
OTP-PREM OVERTIME	221.00	621.33	696.10	816.82	1,031.92	3,387.17
WLO-Worked Lunch Overtime	0.00	28.00	66.00	36.50	35.00	165.50
Total	221.00	928.05	902.10	935.98	1,138.92	4,126.05
Overtime as a % of Work Force	6%	5%	5%	11%	13%	7%
UNCOVERED ABSENCES	3940	3941	3942	3943	3944	Total
Absences FTE	0.90	21.44	17.45	8.06	8.41	56.26
OTP FTE	1.28	5.35	5.20	5.40	6.57	23.80
FTE Difference	-0.37	16.08	12.24	2.66	1.84	32.45



Metro

1 FTE = 2080 Hours/Year or 173.3 Hours Per Month

Rail Fleet Services Instruction

November 2009

Training classes completed during the month of November 2009

Description	Status	Start	End	Course Hours	Student Count	Training Hours
Blue Line Training - LRV:						
RAIL SYSTEM SAFETY	Complete	11/17/2009	11/25/2009	2.5	92	230
FORKLIFT, OSHA REFRESHER	Complete	11/1/2009	11/2/2009	2	40	80
M3 MAINTENANCE LEADER	Complete	11/19/2009	11/19/2009	8	7	56
ETD COMMUNICATING ONE-ON-ONE	Complete	11/24/2009	11/24/2009	3	2	6
CNG FIRST RESPONDER TRAINING FOR VEHICLE OPERATIONS	Complete	11/19/2009	11/19/2009	2.5	1	2.5
ETD PEOPLE SKILLS	Complete	11/19/2009	11/19/2009	3	2	6
DRUG-AND-ALCOHOL-FREE WORK ENVIRONMENT POLICY	Complete	11/19/2009	11/19/2009	4	1	4
Safety (Video)	Complete	11/5/2009	11/14/2009	2	3	6

Total Blue Line Training (Hours): 390.5

Red Line Training (Breda A650 HRV):

RFS BRED A 650 SIGNALRAIL ATO	Complete	10/23/2009	11/3/2009	8	6	48
RFS BRED A 650 ATO SHOP TESTER	Complete	11/4/2009	11/6/2009	24	6	144
RFS BRED A 650 TICU	Complete	11/10/2009	11/12/2009	16	6	96
RFS BRED A 650 COMMUNICATIONS	Complete	11/13/2009	11/17/2009	12	6	72
RFS BRED A 650 PREVNT MAINT INSP	Complete	11/1/2009	11/20/2009	40	6	240
MINETA TRANSPORTATION INSTITUTE'S INFO MEETING	Complete	11/17/2009	11/17/2009	1	3	3
FORKLIFT CERTIFICATION	Complete	11/3/2009	11/3/2009	2	1	2
MAINTENANCE SUPERVISORS TRAINING - CLASS 1	Complete	11/19/2009	11/19/2009	5	1	5
ETD COMMUNICATING ONE-ON-ONE	Complete	11/24/2009	11/24/2009	2	1	2

Total Red Line Training (Hours): 564

Green Line Training (P2550 & P2000 LRVs):

EXCEL 2003 - DATA SORT AND FILTERS	Complete	11/12/2009	11/12/2009	2	1	2
EXCEL 2003 - FORMAT AND PRINT WORKSHEETS	Complete	11/10/2009	11/10/2009	2.5	1	2.5
COMMUNITY EMERGENCY RESPONSE TEAM TRAINING	Complete	11/3/2009	11/17/2009	18	1	18
HAZARD COMMUNICATION TRAINING	Complete	11/4/2009	11/4/2009	4	1	4
FIS 111 GL INQUIRY	Complete	11/18/2009	11/18/2009	3	1	3
M3 MAINTENANCE LEADER	Complete	11/19/2009	11/19/2009	8	1	8

Total Green Line Training (Hours): 37.5

Gold Line Training (P2550 & P2000 LRVs):

DRUG-AND-ALCOHOL-FREE WORK ENVIRONMENT POLICY	Complete	11/19/2009	11/19/2009	4	1	4
---	----------	------------	------------	---	---	---

Total Gold Line Training (Hours): 4

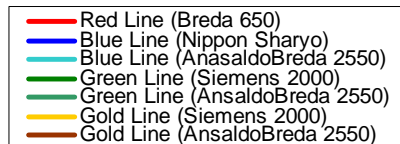
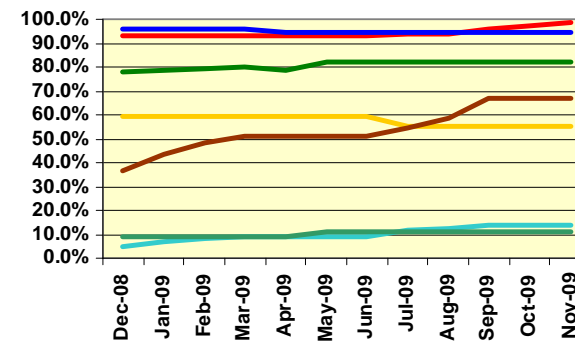
Total Rail Fleet Services Instruction for the month of November 2009 (Hours): 996.0

Core Vehicle Training Completed:

	BLUE	RED	GREEN	GOLD
Percentage of core vehicle training complete:	94.5%	98.6%	82.2%	55.1%
AnsaldoBreda 2550 Training Completed:	13.8%	N/A	11.1%	67.1%

Average Specialist Rail Experience Level in Years: 10.4 8.4 7.6 8.3

Core Training Completed



Variations caused by new hires, employee transfers, & training completed