



Rail Fleet Services Monthly Report April 2010



Metro

Table of Contents

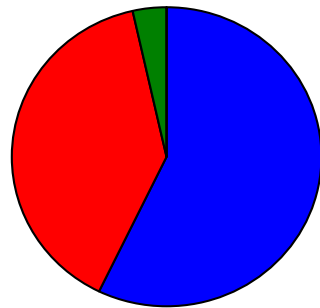
• Safety	
– Industrial Injuries	Page 1
– Rail Vehicle Accidents & Major Incidents	Page 2
• Customer Service	
– Service Delivery – AM/PM Pull-Outs	Page 3
– Vehicle Utilization – Blue Line & Green Line	Page 4
– Vehicle Utilization – Red Line & Gold Line	Page 5
– Mean Miles Between Failures (Major)	Page 6
– Repeat Failures (Major)	Page 7
• Business Processes	
– Reported Incidents	Page 8
– Preventative Maintenance Compliance	Page 9
• Finance	
– Vandalism & Graffiti Costs	Page 10
– Graffiti Pictures	Page 11
– Material & Labor Costs	Page 12
– Cost per mile	Page 13
– Absence vs. Overtime	Page 14
• Growth	
– Rail Fleet Service Training	Page 15

Industrial Injuries – Lost Work Hours

April 2010

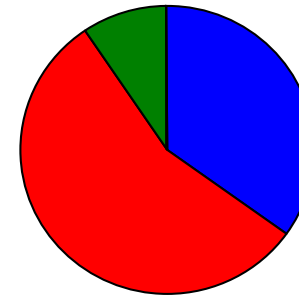
	May-09	Jun-09	Jul-09	Aug-09	Sep-09	Oct-09	Nov-09	Dec-09	Jan-10	Feb-10	Mar-10	Apr-10	Year to Date
Blue Line	160	208	144	48	112	352	288	200	176	160	264	256	2,368
Red Line	344	352	328	456	328	344	356	352	352	200	176	176	3,764
Green Line	0	0	0	0	0	0	8	136	168	168	136	16	632
Gold Line	0	0	0	0	0	0	0	8	0	0	0	0	8
Totals	504	560	472	504	440	696	652	696	696	528	576	448	6,772

April 2010 - Lost Work Hours



■ Blue Line ■ Red Line ■ Green Line ■ Gold Line

Year-to-Date Lost Work Hours



■ Blue Line ■ Red Line ■ Green Line ■ Gold Line

	Employees		April 2010 Lost Work Hours			
	Assigned	Active	Service Attendant	Maint. Specialist	Body Repairer /Painter	April 2010 Total Hrs.
Blue Line	107	104	0	256	0	256
Red Line	107	104	176	0	0	176
Green Line	48	48	16	0	0	16
Gold Line	50	48				0
Totals	312	304	192	256	0	448
Total Lost Work Hours for 12-months = 6,772 hours						

Rail Vehicle Accidents & Major Incidents

April 2010

Repair Costs	May-09	Jun-09	Jul-09	Aug-09	Sep-09	Oct-09	Nov-09	Dec-09	Jan-10	Feb-10	Mar-10	Apr-10	Totals
Blue Line	\$1,480	\$189	\$9,262	\$0	\$2,122	\$0	\$38,396	\$656	\$39,034	\$5,600	\$11,305	\$2,100	\$110,144
Red Line	\$104,950	\$0	\$0	\$0	\$0	\$0	\$0	\$0	\$0	\$0	\$0	\$0	\$104,950
Green Line	\$0	\$2,481	\$0	\$0	\$0	\$0	\$0	\$0	\$0	\$0	\$0	\$0	\$2,481
Gold Line	\$0	\$189	\$0	\$0	\$14,310	\$0	\$3,538	\$0	\$17,028	\$4,404	\$0	\$0	\$39,469
Totals	\$106,430	\$2,859	\$9,262	\$0	\$16,432	\$0	\$41,934	\$656	\$56,062	\$10,004	\$11,305	\$2,100	\$257,044

Rail Vehicle Accident Costs - April 2010				
Metro Blue Main Line				
2010	Incident #	Problem code	Incident Description	Cost
04/13/10	1574128	(10-73) Train vs. Vehicle	Train 2, T-236, Third and Pacific n/b Consist (155A)-135=103	\$782.00
04/19/10	1582497	(10-71) Train vs. Other	Cab 120A left side windshield cracked by thrown rocks. Train 4 T-63 Cars 120-141-138 n/b Track 1 between Century & 92nd	\$1,183.00
04/21/10	1584670	(10-71) Train vs. Other	Train 99 non-revenue Single car 137A T152 Del Amo Station Platform 2 NB reverse-run	\$135.00
TOTAL FOR METRO BLUE LINE				\$2,100.00
No accidents for Red Line, Green Line and Gold Line				
(10-71) = Train vs. Object, (10-72) = Train vs. Pedestrian, (10-73) = Train vs. Vehicle (10-74) = Train vs. MTA Vehicle, (10-75) = Derailment				

Service Delivery – AM/PM Pull-Outs

April 2010

Cars Available for AM/PM Pull-Outs

Blue Line – Fleet Size 69 cars

- Weekday pull-out: 60 cars
- Weekend pull-out: 36 cars
- **Monthly Mileage: 407,178 miles**

Red Line - Fleet Size 104 cars

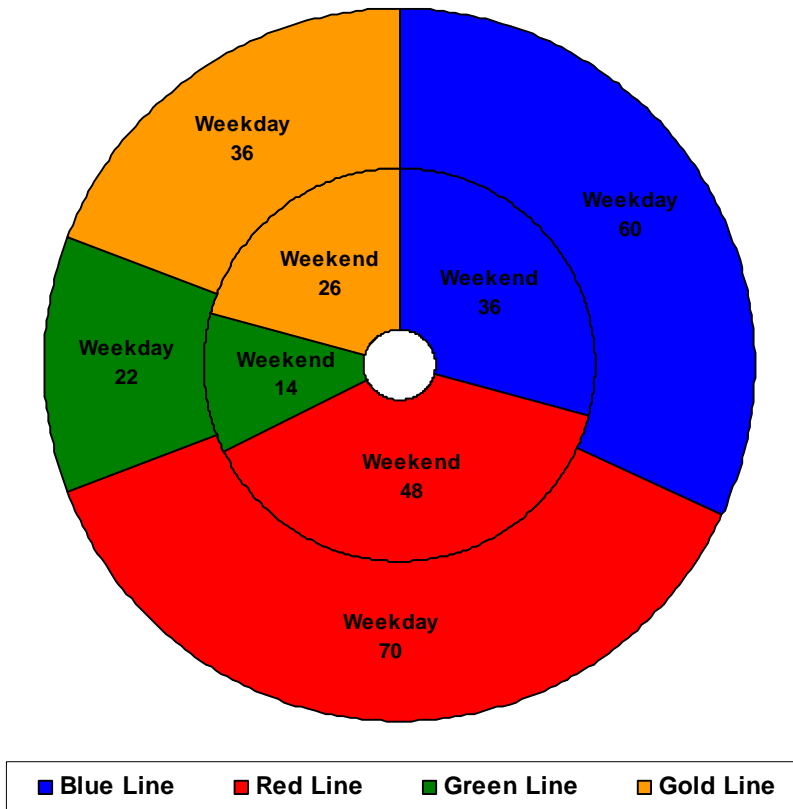
- Weekday pull-out: 70 cars
- Weekend pull-out: 48 cars
- **Monthly Mileage: 535,564 miles**

Green Line – Fleet Size 28 cars

- Weekday pull-out: 22 cars
- Weekend pull-out: 14 cars
- **Monthly Mileage: 216,102 miles**

Gold Line – Fleet Size 49 cars

- Weekday pull-out: 36 cars
- Weekend pull-out: 26 cars
- **Monthly Mileage: 233,319 miles**



Vehicle Utilization

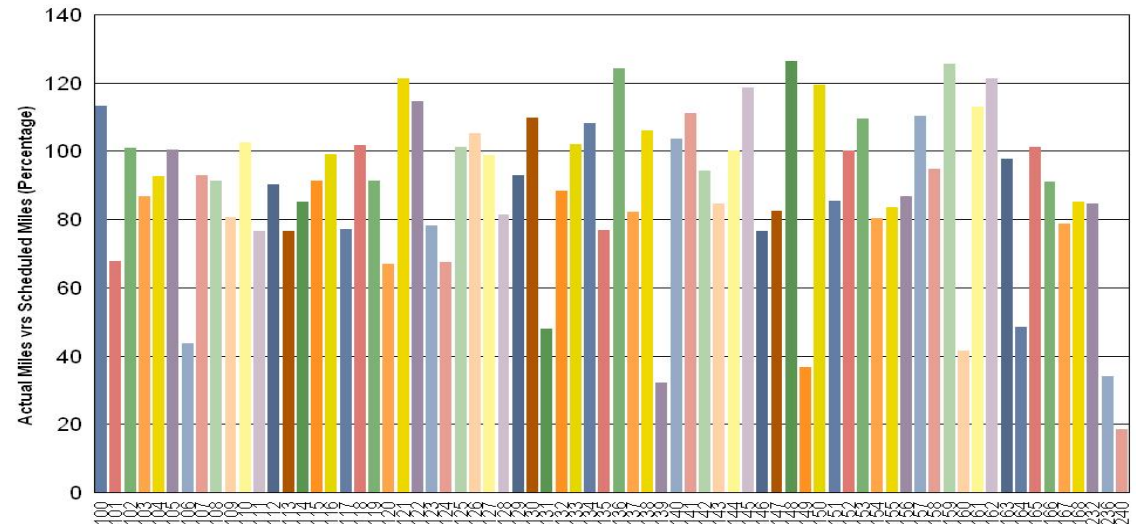
April 2010

Blue Line – Car 240 came from the Gold Line and have been in status 2 at the Blue Line for the entire month of April.

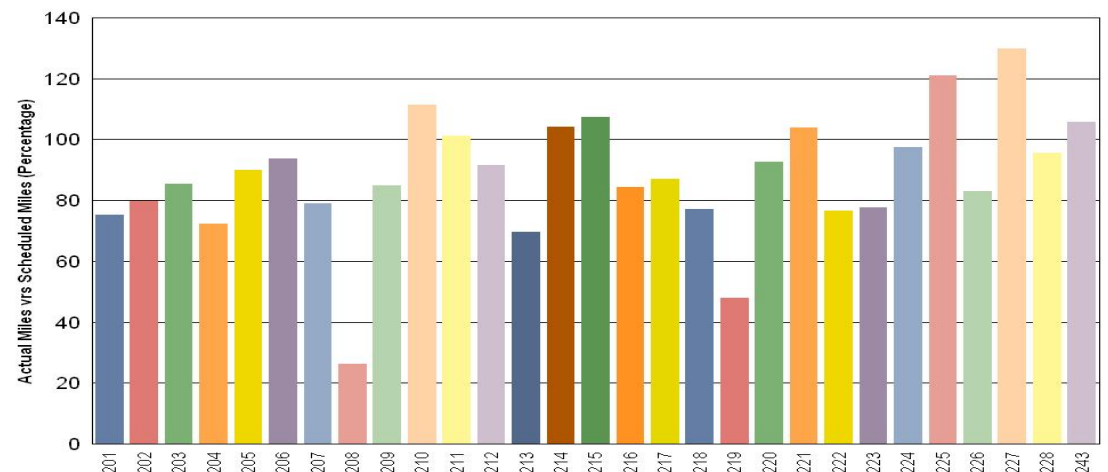
Note: Percentage includes an average 4% mileage deduction for Yard mileage and Vehicle Testing.

Green Line – Car 208 is not berthing properly and is out of service for trouble shoot and mainline testing.

Metro Blue Line



Metro Green Line



Vehicle Utilization

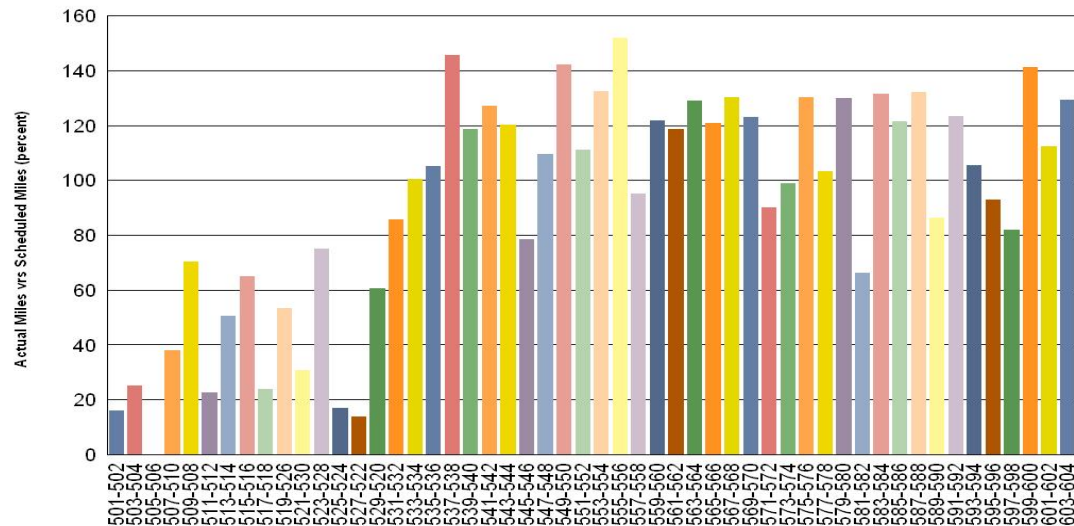
April 2010

Red Line - The original 30 Base Buy cars are not being used to their fullest potential due to propulsion problems.

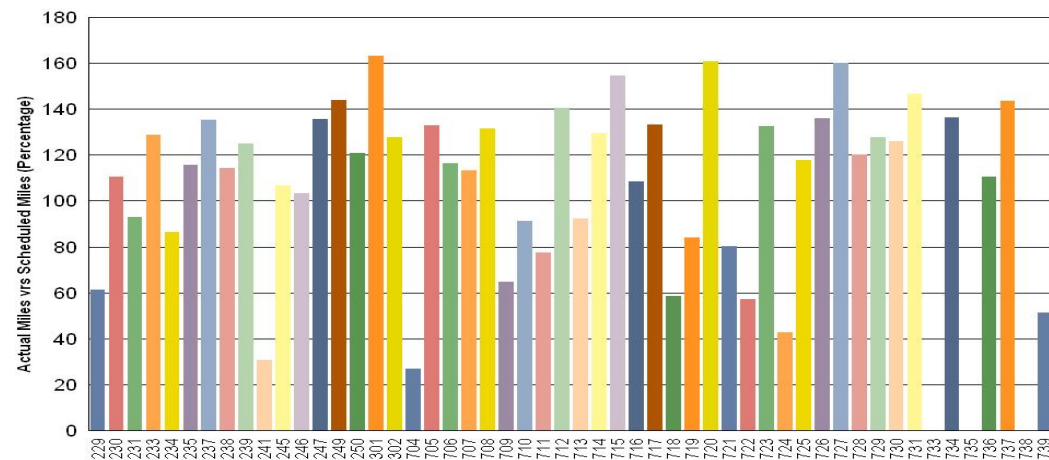
Percentage includes an average 4% mileage deduction for Yard mileage and Vehicle Testing.

Gold Line – Car 733 was delivered from the Blue Line, for upgrade, MTA MODS and ATP testing. Car 735 is still at the Blue Line, and to be delivered to Gold Line next week on 5/21/10. Car 738 was just conditionally accepted.

Metro Red Line



Metro Gold Line



Mean Miles Between Failures (Major)

April 2010

Miles Between Major Failures

Blue Line: 33,932 miles (12 Major Failures)

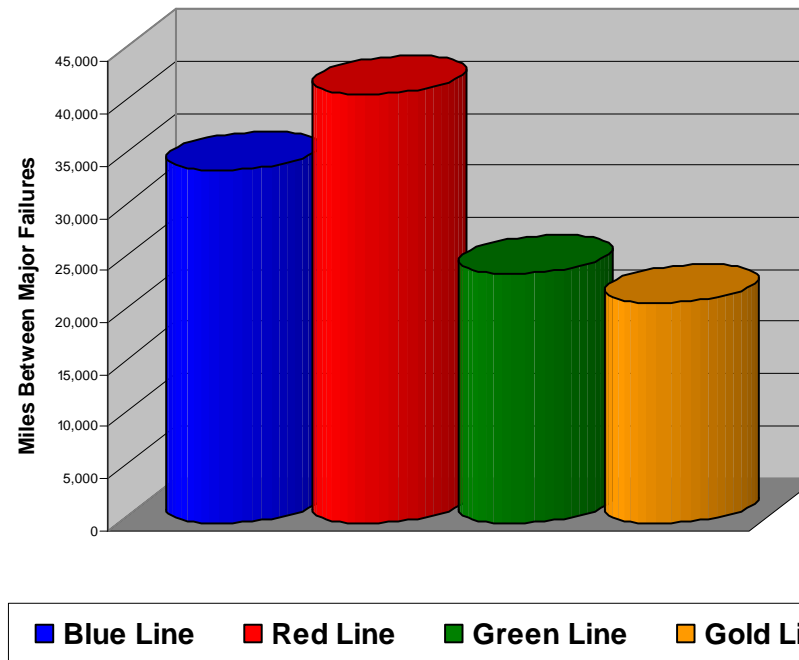
Red Line: 41,197 miles (13 Major Failures)

Green Line: 24,011 miles (9 Major Failures)

Gold Line: 21,211 miles (11 Major Failures)

Siemens P2000 12,009 miles (7 Major Failures)

AnsaldoBreda P2550 37,314 miles (4 Major Failures)



Major Failure: When a train does not complete its scheduled run or is more than 5 minutes late of its scheduled arrival time.

Repeat Failures (Major)

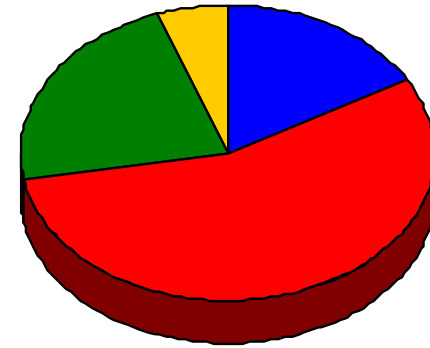
April 2010

Metro Blue Line: 3 Repeat Failures

Metro Red Line: 10 Repeat Failures

Metro Green Line: 4 Repeat Failures

Metro Gold Line: 1 Repeat Failures



■ Blue Line ■ Red Line ■ Green Line ■ Gold Line

Repeater Car Details - April 2010

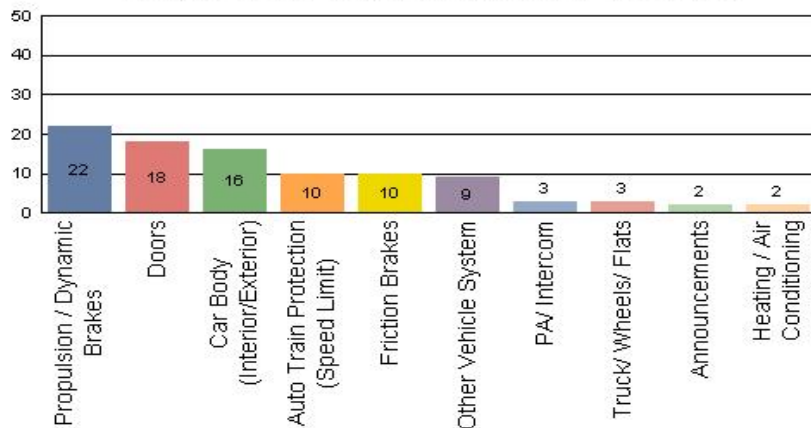
System	Blue Line		Red Line		Green Line		Gold Line	
	Car #	Repeats	Car #	Repeats	Car #	Repeats	Car #	Repeats
Announcements					212	1		
Car Body					201	2		
Communication			575	2				
Friction Brakes			511	1				
			546	2				
			577	4				
Propulsion/Dynamic Brake	106	1	581	1	202	1		
	167	2						
TWC							706	1
TOTALS	3		10		4		1	

Repeat Failure: When a train car has three or more major repeat problems/failures.

Reported Incidents April 2010

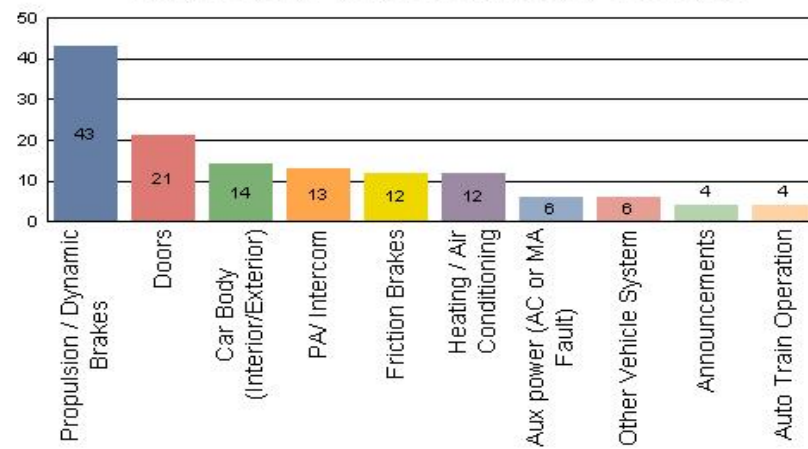
Metro Blue Line

Count of the Top 10 Incident Problems



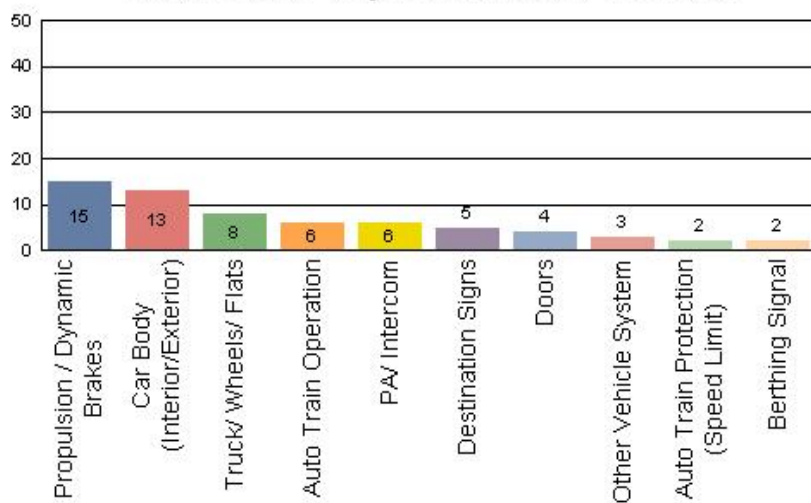
Metro Red Line

Count of the Top 10 Incident Problems



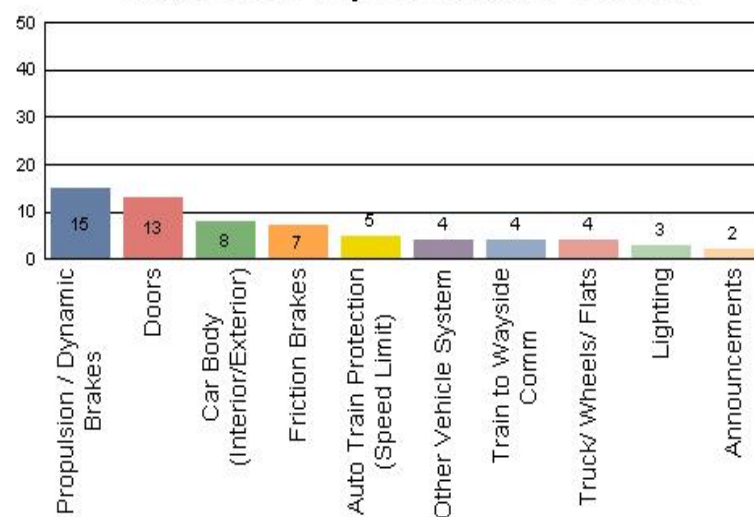
Metro Green Line

Count of the Top 10 Incident Problems



Metro Gold Line

Count of the Top 10 Incident Problems



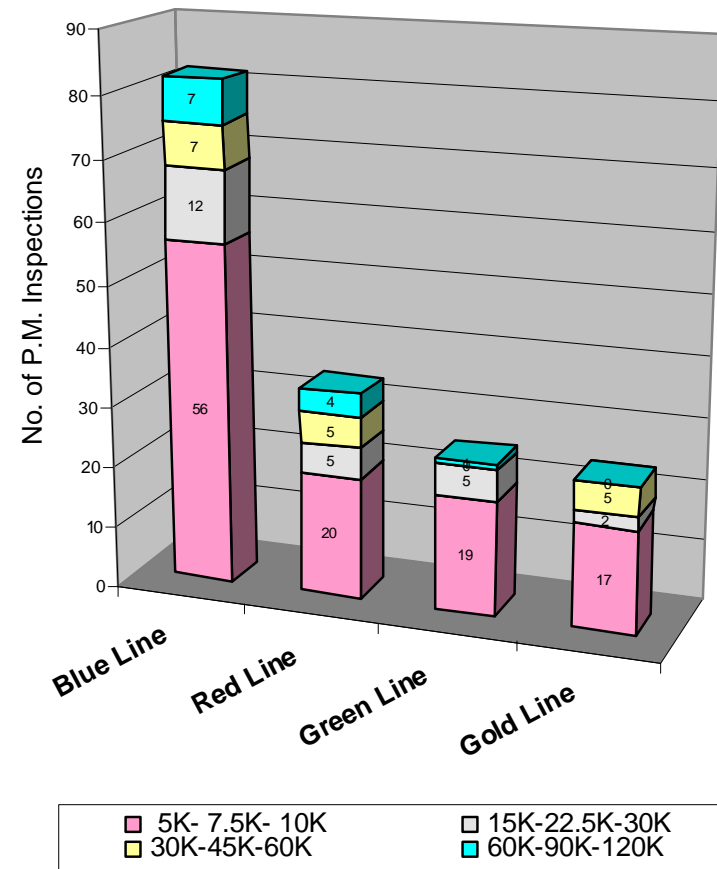
Preventative Maintenance Compliance

April 2009

Averages	Apr-09	May-09	Jun-09	Jul-09	Aug-09	Sep-09	Oct-09	Nov-09	Dec-09	Jan-10	Feb-10	Mar-10	Apr-10
Blue Line	100%	100%	100%	100%	100%	100%	100%	100%	100%	100%	100%	100%	100%
Red Line	100%	100%	100%	94%	100%	100%	100%	100%	100%	100%	100%	100%	100%
Green Line	100%	100%	100%	100%	100%	100%	100%	100%	100%	100%	100%	100%	100%
Gold Line	100%	100%	100%	100%	100%	100%	100%	100%	100%	100%	100%	100%	100%

April 2010 Preventative Maintenance Inspections

No. of P.M. Inspections	5K-7.5K-10K	15K-22.5K-30K	30K-45K-60K	60K-90K-120K	Totals	Percent Compliance
Blue Line	56	12	7	7	82	100%
Red Line	20	5	5	4	34	100%
Green Line	19	5	0	1	25	100%
Gold Line	17	2	5	0	24	100%
Totals:	112	24	17	12	165	100%



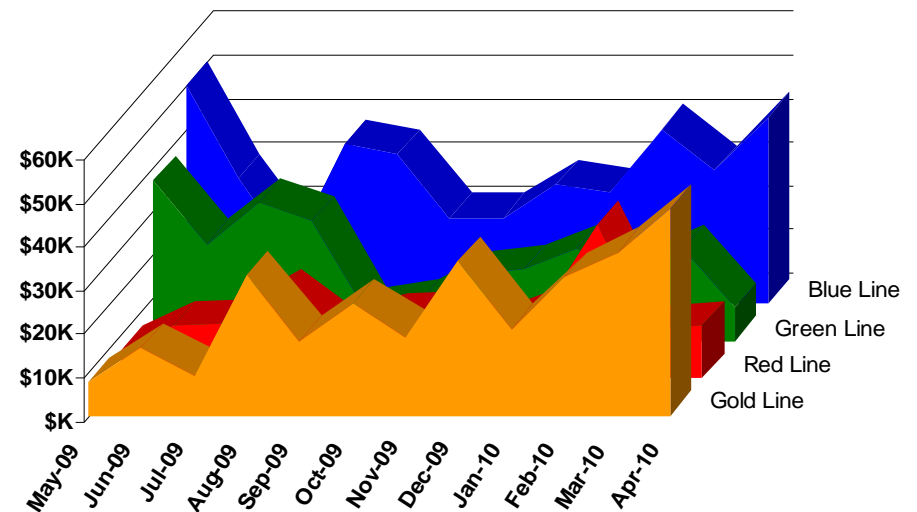
Vandalism & Graffiti Report

April 2010

Graffiti Costs - April 2010

	May-09	Jun-09	Jul-09	Aug-09	Sep-09	Oct-09	Nov-09	Dec-09	Jan-10	Feb-10	Mar-10	Apr-10	Year-to-Date
Blue Line	\$50,062	\$28,914	\$11,909	\$36,475	\$34,318	\$19,686	\$19,757	\$27,409	\$25,519	\$40,085	\$30,557	\$42,951	\$367,642
Green Line	\$36,921	\$22,307	\$31,788	\$27,501	\$6,774	\$8,355	\$14,915	\$16,393	\$20,985	\$35,216	\$20,933	\$7,585	\$249,673
Red Line	\$6,513	\$12,013	\$12,562	\$19,237	\$10,375	\$13,684	\$14,334	\$11,227	\$15,838	\$13,809	\$11,162	\$12,115	\$152,869
Gold Line	\$7,651	\$15,543	\$9,213	\$32,051	\$17,062	\$25,750	\$17,992	\$35,479	\$19,892	\$31,808	\$37,462	\$47,526	\$297,429
Totals	\$101,147	\$78,777	\$65,472	\$115,264	\$68,529	\$67,475	\$66,998	\$90,508	\$82,234	\$120,918	\$100,114	\$110,177	\$1,067,613

April 2010 Vandalism & Graffiti - All Rail				
	Qty	Labor	Materials	Totals
Windows replaced	141	\$8,820	\$19,020	\$ 27,840
Vandal Shields	737	\$19,237	\$8,474	\$ 27,710
Seats Cleaned	4,188	\$9,464	\$0	\$ 9,464
Seats Replaced	123	\$3,875	\$5,203	\$ 9,077
Ext/Int Repairs	1,218	\$22,989	\$3,768	\$ 26,757
Totals for January 2010		\$67,124	\$43,052	\$ 110,177



Graffiti Pictures

March 2010



A - Metro Blue Line



B - Metro Green Line

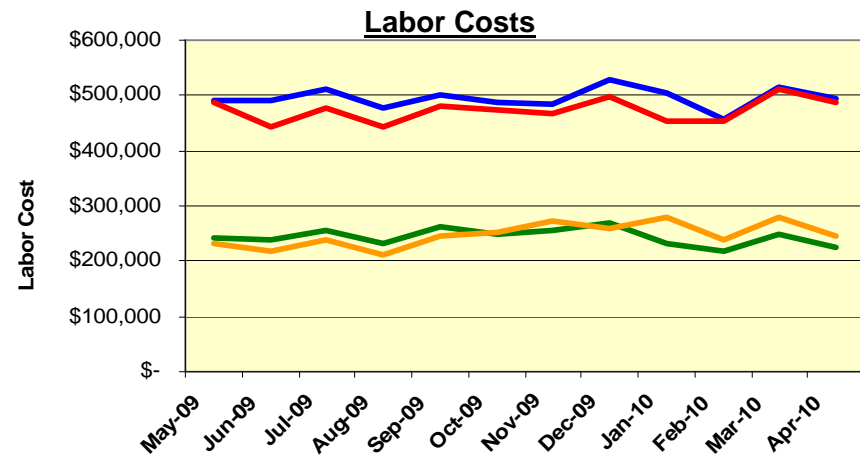
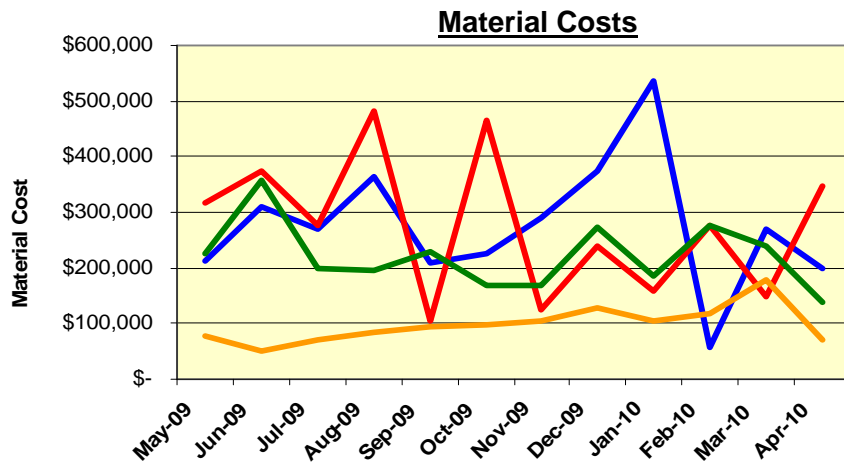


C - Metro Gold Line

Material and Labor Costs

April 2010

MATERIALS	May-09	Jun-09	Jul-09	Aug-09	Sep-09	Oct-09	Nov-09	Dec-09	Jan-10	Feb-10	Mar-10	Apr-10	Totals
Blue Line	\$ 211,403	\$ 310,619	\$ 268,164	\$ 363,633	\$ 207,364	\$ 225,796	\$ 290,113	\$ 375,541	\$ 535,717	\$ 57,633	\$ 270,743	\$ 197,253	\$ 3,313,979
Red Line	\$ 318,142	\$ 375,408	\$ 275,321	\$ 483,111	\$ 103,550	\$ 466,761	\$ 123,484	\$ 238,738	\$ 157,351	\$ 275,856	\$ 149,720	\$ 348,088	\$ 3,315,531
Green Line	\$ 226,470	\$ 356,213	\$ 199,680	\$ 194,727	\$ 229,080	\$ 169,738	\$ 168,715	\$ 272,871	\$ 184,149	\$ 276,116	\$ 240,194	\$ 136,768	\$ 2,654,721
Gold Line	\$ 78,339	\$ 49,593	\$ 70,787	\$ 84,679	\$ 93,780	\$ 96,151	\$ 106,126	\$ 128,297	\$ 105,109	\$ 117,356	\$ 179,658	\$ 72,343	\$ 1,182,219
Totals	\$ 834,354	\$ 1,091,833	\$ 813,952	\$ 1,126,150	\$ 633,774	\$ 958,446	\$ 688,438	\$ 1,015,447	\$ 982,326	\$ 726,961	\$ 840,315	\$ 754,453	\$ 8,871,682

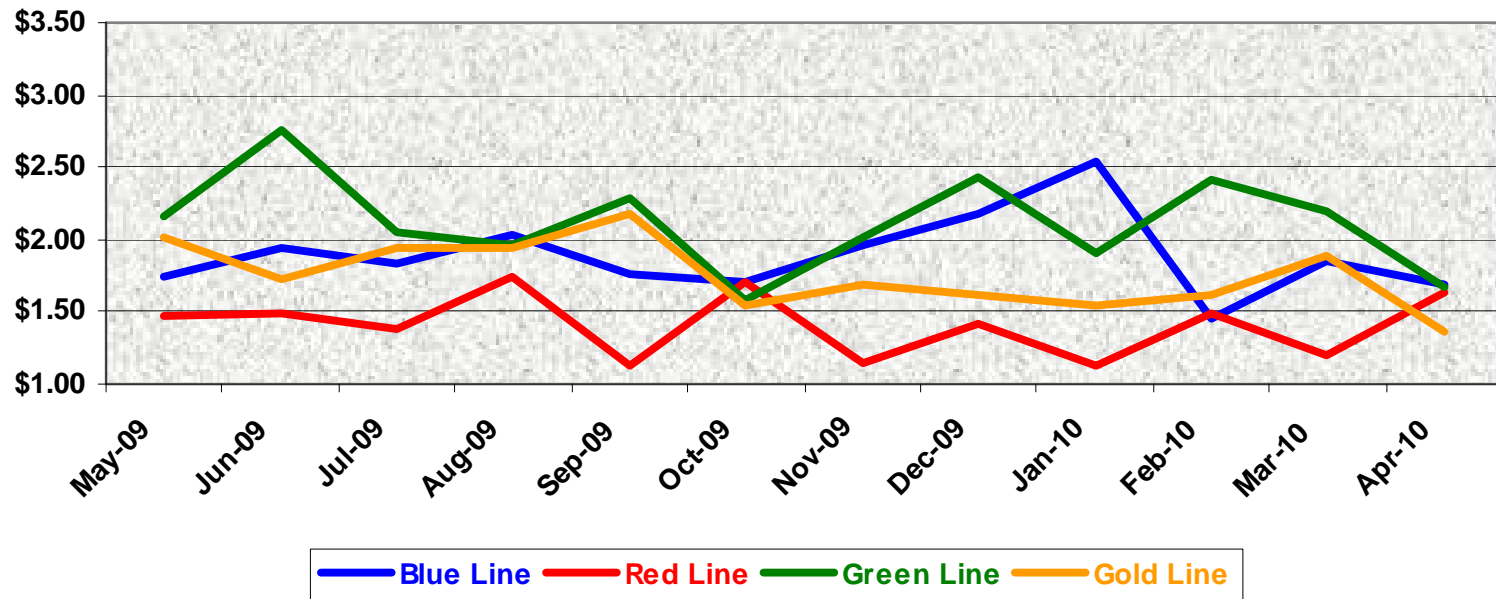


LABOR	May-09	Jun-09	Jul-09	Aug-09	Sep-09	Oct-09	Nov-09	Dec-09	Jan-10	Feb-10	Mar-10	Apr-10
Blue Line	\$ 490,441	\$ 491,565	\$ 510,385	\$ 475,663	\$ 501,060	\$ 487,020	\$ 483,394	\$ 527,760	\$ 505,239	\$ 458,335	\$ 515,305	\$ 492,862
Red Line	\$ 488,099	\$ 443,065	\$ 478,135	\$ 444,523	\$ 481,469	\$ 474,751	\$ 468,331	\$ 498,786	\$ 453,571	\$ 453,580	\$ 510,664	\$ 487,627
Green Line	\$ 241,007	\$ 238,192	\$ 257,021	\$ 231,555	\$ 263,718	\$ 248,915	\$ 256,078	\$ 269,668	\$ 231,918	\$ 218,637	\$ 248,224	\$ 225,004
Gold Line	\$ 232,039	\$ 216,686	\$ 237,530	\$ 212,794	\$ 246,807	\$ 251,309	\$ 271,694	\$ 259,793	\$ 278,537	\$ 237,594	\$ 279,935	\$ 247,135
Totals	\$ 1,451,586	\$ 1,389,509	\$ 1,483,071	\$ 1,364,535	\$ 1,493,054	\$ 1,461,995	\$ 1,479,498	\$ 1,556,008	\$ 1,469,265	\$ 1,368,146	\$ 1,554,128	\$ 1,452,629

Cost Per Mile

April 2010

Cost per mile:	May-09	Jun-09	Jul-09	Aug-09	Sep-09	Oct-09	Nov-09	Dec-09	Jan-10	Feb-10	Mar-10	Apr-10	Average
Blue Line	\$1.74	\$1.95	\$1.83	\$2.04	\$1.76	\$1.71	\$1.96	\$2.18	\$2.53	\$1.45	\$1.85	\$1.69	\$1.89
Red Line	\$1.46	\$1.49	\$1.37	\$1.75	\$1.12	\$1.71	\$1.15	\$1.42	\$1.13	\$1.48	\$1.19	\$1.64	\$1.41
Green Line	\$2.16	\$2.75	\$2.05	\$1.97	\$2.29	\$1.59	\$2.01	\$2.43	\$1.91	\$2.41	\$2.20	\$1.67	\$2.12
Gold Line	\$2.02	\$1.73	\$1.94	\$1.94	\$2.17	\$1.55	\$1.69	\$1.62	\$1.55	\$1.62	\$1.89	\$1.37	\$1.76



No facility costs are included

Absences vs. Overtime

April 2010

ABSENCE TYPE and HOURS	3940	3941	3942	3943	3944	Total
BER-BEREAVEMENT	0.00	72.00	88.00	64.00	0.00	224.00
CTO-COMPENSATORY TIME OFF	3.00	249.00	164.00	256.00	96.00	768.00
CVA - CASUAL VACATION	8.00	0.00	704.00	34.50	20.00	766.50
DSL-DISABILITY LEAVE/LONG	0.00	64.00	176.00	0.00	176.00	416.00
EFH-EMG. FLOAT HOL.	0.00	8.00	112.00	40.00	16.00	176.00
ETO-EXCUSED TIME OFF	0.00	33.86	22.98	7.00	16.00	79.84
FML-FAMILY CARE LEAVE	0.00	598.00	250.32	88.00	272.00	1,208.32
HLF-HOLIDAY FLOATING	80.00	248.00	432.00	168.00	64.00	992.00
II-INDUSTRIAL INJURY	0.00	256.00	0.00	16.00	0.00	272.00
JUR-JURY DUTY	0.00	32.00	24.00	0.00	0.00	56.00
LC1-LABOR CODE 233	0.00	336.00	246.81	184.00	176.00	942.81
LTI-OCCPIL/LONGTRM INJ LEAVE	0.00	0.00	176.00	0.00	0.00	176.00
MLN-MILITARY ABSENCE-UNPAID	0.00	0.00	8.00	0.00	0.00	8.00
OWP-OFF WITH PERMISSION	0.00	0.00	8.00	0.00	0.00	8.00
RTO-REQUESTED TIME OFF-NO PAY	0.00	20.00	18.98	0.00	3.53	42.51
SCK-SICK PAY	24.00	135.48	202.03	56.00	36.00	453.51
SCW-SICK WITHOUT PAY	0.00	32.52	14.97	24.00	24.00	95.49
SUP-TEMPORARY SUPERVISOR	0.00	281.43	188.58	237.50	300.05	1,007.56
UB-UNION BUSINESS	0.00	6.50	8.00	8.00	0.00	22.50
VAC-VACATION	32.00	468.95	88.00	212.00	248.00	1,048.95
Total Absence Hours	147.00	2,841.74	2,932.67	1,395.00	1,447.58	8,763.99
Number of Work Force	19.00	107.00	107.00	48.00	50.00	331.00
Full Work Force hours/month	3,292.70	18,543.10	18,543.10	8,318.40	8,665.00	57,362.30
Absence as a % of Work Force	4%	15%	16%	17%	17%	15%
OVERTIME TYPE and HOURS	3940	3941	3942	3943	3944	Total
CTB-COMPENSATORY TIME TO BANK	26.00	34.64	40.00	67.98	88.00	256.62
OTP-PREM OVERTIME	202.00	753.72	859.94	740.81	1,176.97	3,733.44
WLO-Worked Lunch Overtime	0.00	27.50	84.48	32.00	37.00	180.98
Total	228.00	815.86	984.42	840.79	1,301.97	4,171.04
Overtime as a % of Work Force	7%	4%	5%	10%	15%	7%
UNCOVERED ABSENCES	3940	3941	3942	3943	3944	Total
Absences FTE	0.85	16.39	16.92	8.05	8.35	50.56
OTP FTE	1.32	4.71	5.68	4.85	7.51	24.06
FTE Difference	-0.47	11.69	11.24	3.20	0.84	26.50



Metro

1 FTE = 2080 Hours/Year or 173.3 Hours Per Month

Rail Fleet Services Instruction

April 2010

Training classes completed during the month of April 2010

Description	Status	Start	End	Course Hours	Student Count	Training Hours
Blue Line Training - (865/2020 & P2000 LRV):						
WAYSIDE WORKER PROTECTION	Complete	4/6/2010	4/9/2010	4	43	172
ETD PEOPLE SKILLS	Complete	4/15/2010	4/15/2010	3	1	3
RFS SIEMENS 2000 VEHICLE SYSTEMS	Complete	4/13/2010	4/30/2010	40	6	240
SEXUAL HARASSMENT PREVENTION & TITLE VII	Complete	4/20/2010	4/20/2010	2	1	2
MOP WORKPLACE VIOLENCE AND THREAT MANAGEMENT	Complete	4/27/2010	4/27/2010	4	2	8
Hearing Protection (Video)	Complete	4/3/2010	4/3/2010	2	1	2
ETD STRESS MANAGEMENT	Complete	4/14/2010	4/14/2010	3	1	3
FIS 111 NAVIGATION	Complete	4/16/2010	4/16/2010	3	1	3
ADVANCED WRITING - PART 1	Complete	4/21/2010	4/21/2010	3	1	3

Total Blue Line Training (Hours): 436

Red Line Training (Breda A650 HRV):

BLOODBORNE PATHOGENS	Complete	4/1/2010	4/15/2010	2	13	26
RFS BRED A650 TRANSRAIL LVPS	Complete	4/23/2010	4/23/2010	8	1	8
RFS BRED A650 CAR BODY	Complete	4/20/2010	4/20/2010	8	1	8
RFS BRED A650 TRUCKS & CAR BODY	Complete	4/6/2010	4/8/2010	24	1	24
RFS BRED A650 PROPULSION GE	Not Complete	4/27/2010	5/4/2010	32	1	32
Mainline Duty, Dead Tow and Vehicle Recovery	Complete	4/14/2010	4/14/2010	8	1	8
HAZARD COMMUNICATION TRAINING	Complete	4/7/2010	4/7/2010	4	1	4
PRE-SUPERVISORY TRAINING	Complete	4/6/2010	4/14/2010	14	1	14

Total Red Line Training (Hours): 124

Green Line Training (P2000 LRVs):

WAYSIDE WORKER PROTECTION	Complete	4/27/2010	4/28/2010	4	14	56
RFS SIEMENS 2000 VEHICLE SYSTEMS	Complete	4/13/2010	4/30/2010	40	2	80
TRANSIT TERRORISM AWARENESS TRAINING	Complete	4/22/2010	4/22/2010	1	3	3
ETD DEVELOPING YOUR FULL POTENTIAL	Complete	4/1/2010	4/1/2010	3	4	12
ETD STRESS MANAGEMENT	Complete	4/14/2010	4/14/2010	3	1	3

Total Green Line Training (Hours): 154

Gold Line Training (P2550 LRVs):

RFS ANSALDOBRED A2550 VEHICLE SYSTEMS	Complete	3/29/2010	4/2/2010	16	4	64
RFS ANSALDOBRED A2550 FRICTION BRAKES	Complete	4/26/2010	4/30/2010	32	6	192
RFS ANSALDOBRED A2550 COMMUNICATIONS	Complete	4/22/2010	4/23/2010	24	6	144
RFS ANSALDOBRED A2550 INTEGRATED DISPLAY	Complete	4/19/2010	4/21/2010	8	4	32
RFS ANSALDOBRED A2550 APS/LVPS/BATTERY	Complete	4/12/2010	4/16/2010	16	4	64
RFS ANSALDOBRED A2550 PANTOGRAPH	Complete	4/5/2010	4/6/2010	8	4	32
POWERPOINT 2003	Complete	4/2/2010	4/26/2010	6	2	12
HAZARD COMMUNICATION TRAINING	Complete	4/7/2010	4/7/2010	4	1	4
TRANSIT TERRORISM AWARENESS TRAINING	Complete	4/22/2010	4/22/2010	1	1	1

Total Gold Line Training (Hours): 545

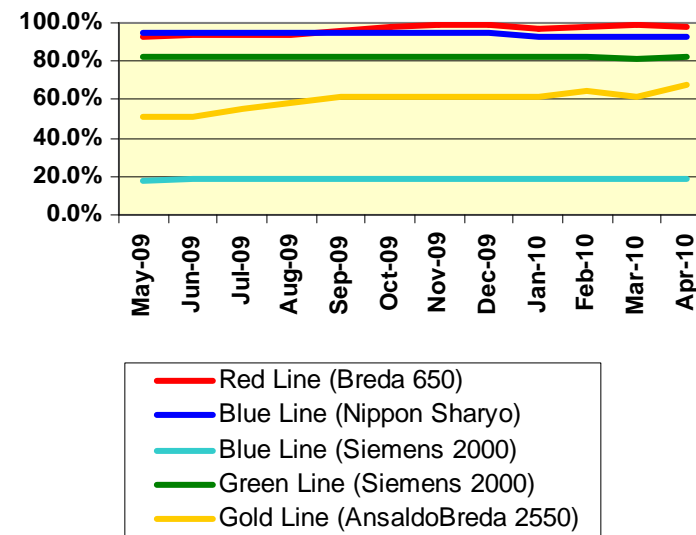
Total Rail Fleet Services Instruction for the month of April 2010 (Hours): 1,259.0

Core Vehicle Training Completed: **BLUE RED GREEN GOLD**

Percentage of core vehicle training complete: **92.9% 98.5% 82.2% 67.5%**
Siemens 2000 training complete: **19.1% N/A N/A N/A**

Average Specialist Rail Experience Level in Years: **10.6 10.4 7.5 8.6**

Core Training Completed



Variations caused by new hires, employee transfers, & training completed