



# **Rail Fleet Services Monthly Report August 2010**



**Metro**

# Table of Contents

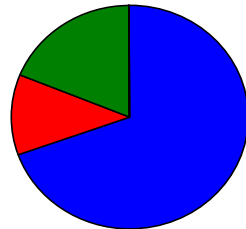
• Safety	
– Industrial Injuries	Page 1
– Rail Vehicle Accidents & Major Incidents	Page 2
• Customer Service	
– Service Delivery – AM/PM Pull-Outs	Page 3
– Vehicle Utilization – Blue Line & Green Line	Page 4
– Vehicle Utilization – Red Line & Gold Line	Page 5
– Mean Miles Between Failures (Major)	Page 6
– Repeat Failures (Major)	Page 7
• Business Processes	
– Reported Incidents	Page 8
– Preventative Maintenance Compliance	Page 9
• Finance	
– Vandalism & Graffiti Costs	Page 10
– Graffiti Pictures	Page 11
– Material & Labor Costs	Page 12
– Cost per mile	Page 13
– Absence vs. Overtime	Page 14
• Engineering	
– Rail Vehicle Engineering Project Summary	Page 15
– P2550 Vehicle Acceptance Program	Page 16
• Quality Assurance	
– Warranty Program Projects Summary	Page 17
• Growth	
– Rail Fleet Service Training	Page 18

# Industrial Injuries – Lost Work Hours

## August 2010

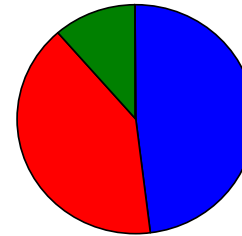
	Sep-09	Oct-09	Nov-09	Dec-09	Jan-10	Feb-10	Mar-10	Apr-10	May-10	Jun-10	Jul-10	Aug-10	Year to Date
Blue Line	112	352	288	200	176	160	264	256	328	424	496	472	3,528
Red Line	328	344	356	352	352	200	176	176	280	168	176	80	2,988
Green Line	0	0	8	136	168	168	136	16	3	0	56	128	819
Gold Line	0	0	0	8	0	0	0	0	0	0	0	0	8
Totals	440	696	652	696	696	528	576	448	611	592	728	680	7,343

August 2010 - Lost Work Hours



■ Blue Line ■ Red Line ■ Green Line ■ Gold Line

Year-to-Date Lost Work Hours



■ Blue Line ■ Red Line ■ Green Line ■ Gold Line

	Employees		August 2010 Lost Work Hours			
	Assigned	Active	Service Attendant	Maint. Specialist	Body Repairer /Painter	August 2010 Total Hrs.
Blue Line	106	102	128	168	176	472
Red Line	106	102	80	0	0	80
Green Line	48	46	128	0	0	128
Gold Line	49	48	0	0	0	0
Totals	309	298	336	168	176	680
Total Lost Work Hours for 12-months = hours						

# Rail Vehicle Accidents & Major Incidents

## August 2010

Repair Costs	Sep-09	Oct-09	Nov-09	Dec-09	Jan-10	Feb-10	Mar-10	Apr-10	May-10	Jun-10	Jul-10	Aug-10	Totals
Blue Line	\$2,122	\$0	\$38,396	\$656	\$39,034	\$5,600	\$11,305	\$2,100	\$5,705	\$2,050	\$36,498	\$50,124	\$193,590
Red Line	\$0	\$0	\$0	\$0	\$0	\$0	\$0	\$0	\$0	\$0	\$0	\$0	\$0
Green Line	\$0	\$0	\$0	\$0	\$0	\$0	\$0	\$0	\$4,799	\$0	\$0	\$0	\$4,799
Gold Line	\$14,310	\$0	\$3,538	\$0	\$17,028	\$4,404	\$0	\$0	\$3,523	\$0	\$653	\$0	\$43,456
Totals	\$16,432	\$0	\$41,934	\$656	\$56,062	\$10,004	\$11,305	\$2,100	\$14,027	\$2,050	\$37,151	\$50,124	\$241,845

Rail Vehicle Accident Costs - August 2010				
Metro Blue Main Line				
2010	Incident #	Problem code	Incident Description	Cost
08/01/10	1735971	(10-72) Train vs. Pedestrian	Cyclist made contact with Train 6 on Track 1 at Stockwell Grade Crossing.	\$189.00
				<b>\$189.00</b>
2010	Incident #	Problem code	Incident Description	Cost
08/12/10	1752836	(10-71) Train vs. Object	Train vs. Overhead Catenary System at 108th Street.	\$45,138.00
				<b>\$45,138.00</b>
2010	Incident #	Problem code	Incident Description	Cost
08/17/10	1758500	(10-71) Train vs. Object	Missile struck right side windshield at Piru Street.	\$881.00
				<b>\$881.00</b>
2010	Incident #	Problem code	Incident Description	Cost
08/19/10	1761572	(10-71) Train vs. Object	Train 18 made contact with a shopping cars at Greenleaf Blvd (T-111).	\$189.00
				<b>\$189.00</b>
2010	Incident #	Problem code	Incident Description	Cost
08/25/10	1771112	(10-73) Train vs. Vehicle	Train 3 made contact with auto at Track 2 at Spring Street (T-232).	\$3,727.00
				<b>\$3,727.00</b>
<b>TOTAL FOR METRO BLUE LINE</b>				<b>\$50,124.00</b>
Metro Red Main Line				
2010	Incident #	Problem code	Incident Description	Cost
08/06/10	1744758	(10-72) Train vs. Pedestrian	Notified by CCTV that a person was laying on the platform, near the edge. Patron fell into moving train (Train No. 41).	\$0.00
				<b>\$0.00</b>
2010	Incident #	Problem code	Incident Description	Cost
08/15/10	1755691	(10-72) Train vs. Pedestrian	Train 52 reports a train vs. pedestrian at Hollywood/Highland (Westbound).	\$0.00
				<b>\$0.00</b>
<b>TOTAL FOR METRO RED LINE</b>				<b>\$0.00</b>
(10-71) = Train vs. Object, (10-72) = Train vs. Pedestrian, (10-73) = Train vs. Vehicle (10-74) = Train vs. MTA Vehicle, (10-75) = Derailment				

# Service Delivery – AM/PM Pull-Outs

## August 2010

### Cars Available for AM/PM Pull-Outs

#### Blue Line – Fleet Size 69 cars

- Weekday pull-out: 60 cars
- Weekend pull-out: 36 cars
- **Monthly Mileage: 415,824 miles**

#### Red Line - Fleet Size 104 cars

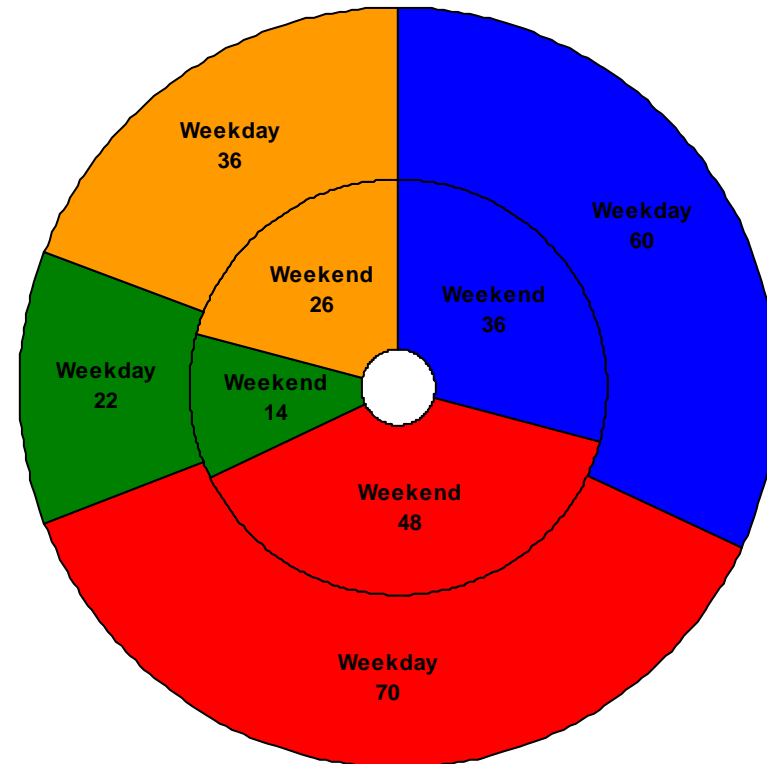
- Weekday pull-out: 70 cars
- Weekend pull-out: 48 cars
- **Monthly Mileage: 547,522 miles**

#### Green Line – Fleet Size 29 cars

- Weekday pull-out: 22 cars
- Weekend pull-out: 14 cars
- **Monthly Mileage: 222,379 miles**

#### Gold Line – Fleet Size 52 cars

- Weekday pull-out: 36 cars
- Weekend pull-out: 26 cars
- **Monthly Mileage: 237,851 miles**



■ Blue Line ■ Red Line ■ Green Line ■ Gold Line

# Vehicle Utilization

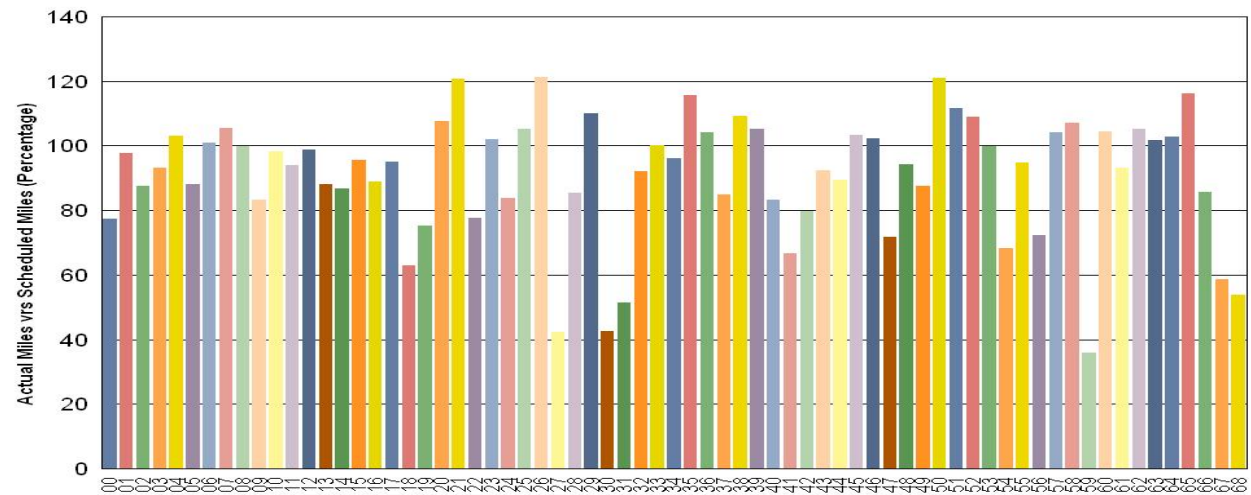
## August 2010

**Blue Line – The fleet has met the daily maximum utilization requirement for the month of August.**

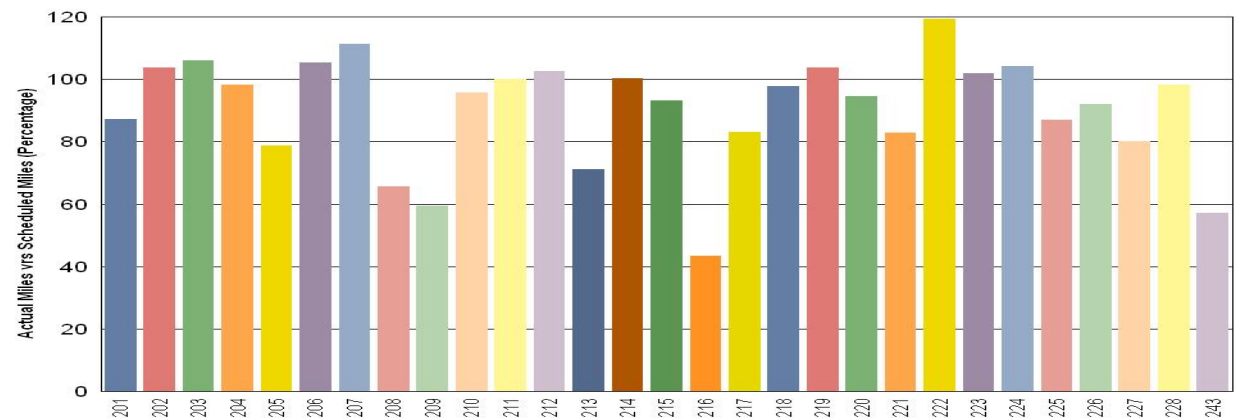
***Note: Percentage includes an average 4% mileage deduction for Yard mileage and Vehicle Testing.***

**Green Line – The fleet has met the daily maximum utilization requirement for the month of August.**

**Metro Blue Line**



**Metro Green Line**



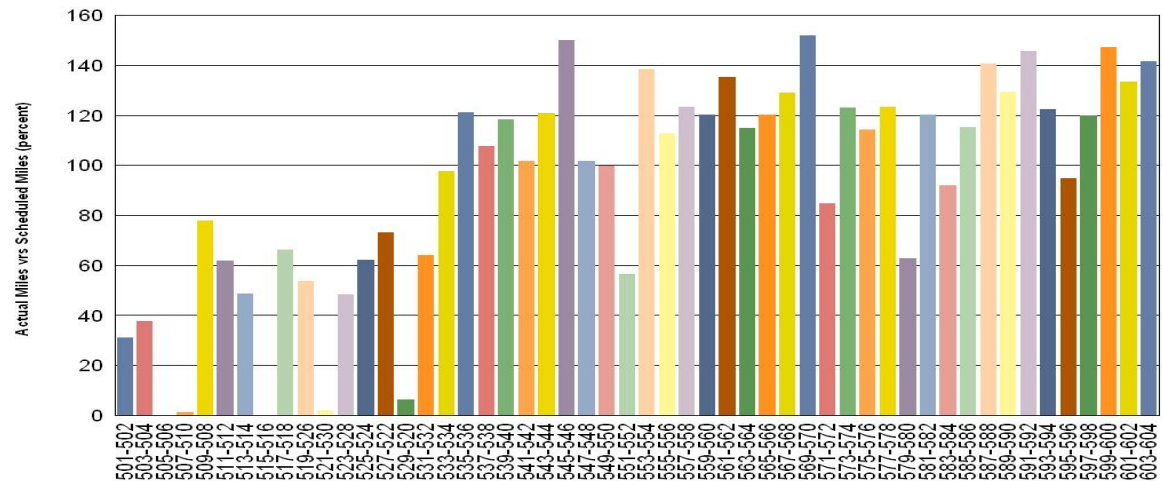
# Vehicle Utilization

## August 2010

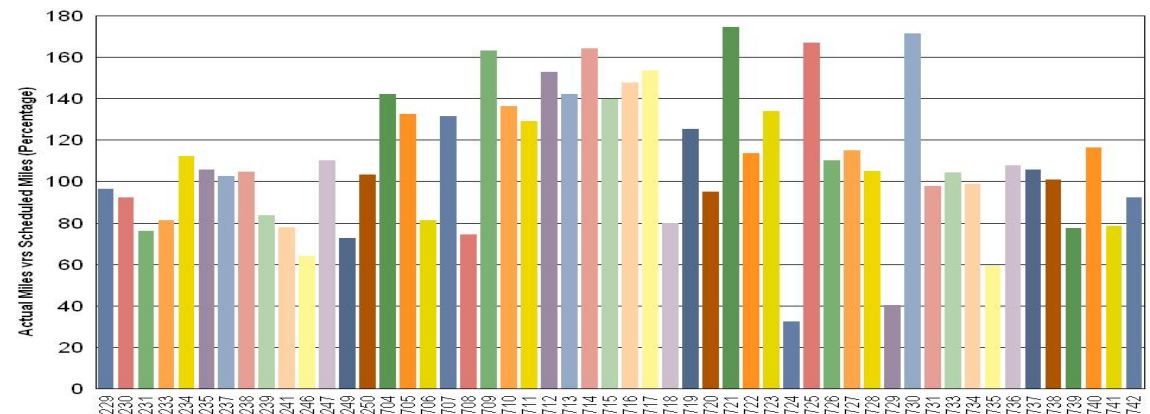
**Red Line – Vehicles 501-502, 505-506, 507-510, 515-516, 521-530, and 529-520. These vehicles are down for propulsion, floor, and brake problems.**

*Percentage includes an average 4% mileage deduction for Yard mileage and Vehicle Testing.*

**Metro Red Line**



**Metro Gold Line**



# Mean Miles Between Failures (Major) August 2010

## Miles Between Major Failures

**Blue Line:** 29,702 miles (14 Major Failures)

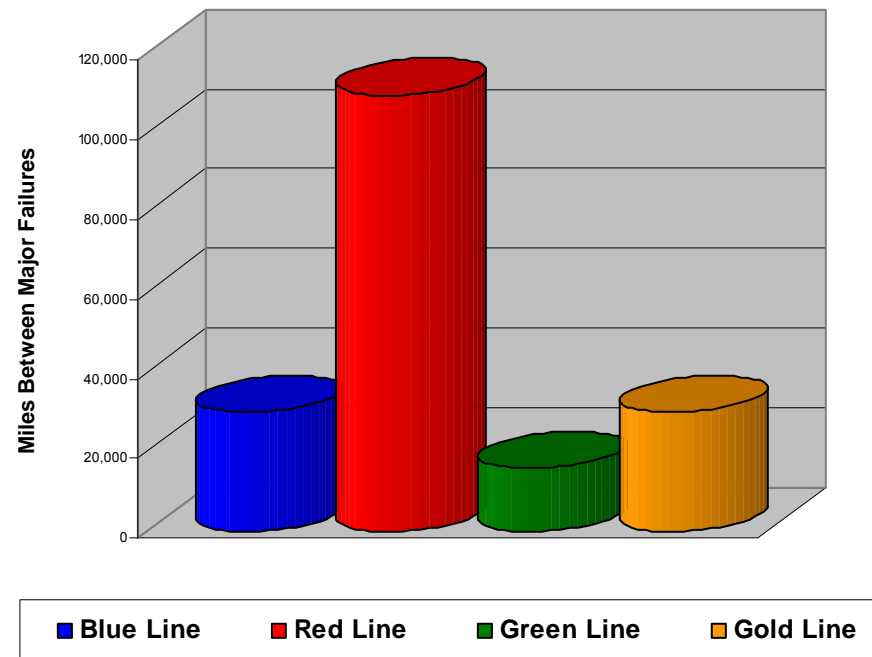
**Red Line:** 109,504 miles (5 Major Failures)

**Green Line:** 15,884 miles (14 Major Failures)

**Gold Line:** 29,731 miles (8 Major Failures)

**Siemens P2000** 17,557 miles (3 Major Failures)

**AnsaldoBreda P2550** 37,036 miles (5 Major Failures)





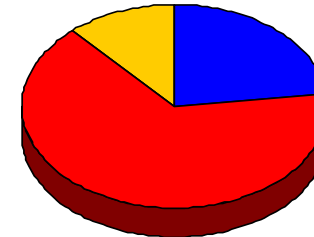
# Repeat Failures (Major) August 2010

**Metro Blue Line:** 6 Repeat Failures

**Metro Red Line:** 17 Repeat Failures

**Metro Green Line:** 0 Repeat Failures

**Metro Gold Line:** 3 Repeat Failures



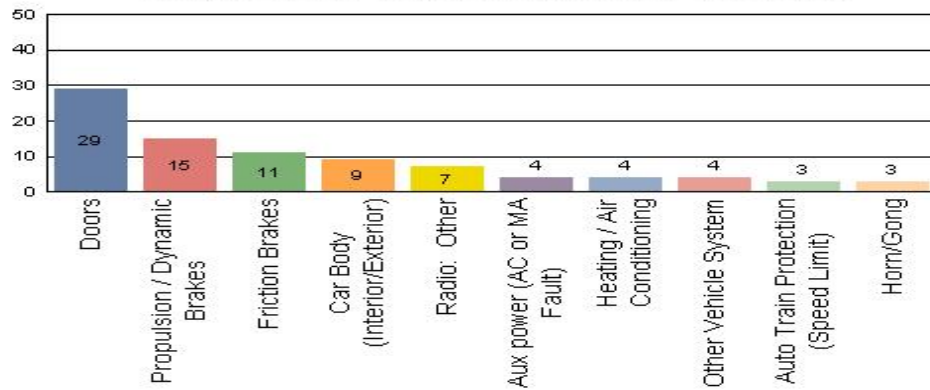
■ Blue Line ■ Red Line ■ Green Line ■ Gold Line

Repeater Car Details - August 2010								
System	Blue Line		Red Line		Green Line		Gold Line	
	Car #	Repeats	Car #	Repeats	Car #	Repeats	Car #	Repeats
Automated Train Protection							724	3
Auxiliary Power								
Communication			567	1				
Doors	122	5						
Friction Brakes	144	1						
			508	1				
			527	1				
			536	1				
			547	3				
			558	2				
Propulsion/Dynamic Brake			501	4				
			513	3				
			593	1				
TOTALS	6		17		0		3	

# Reported Incidents August 2010

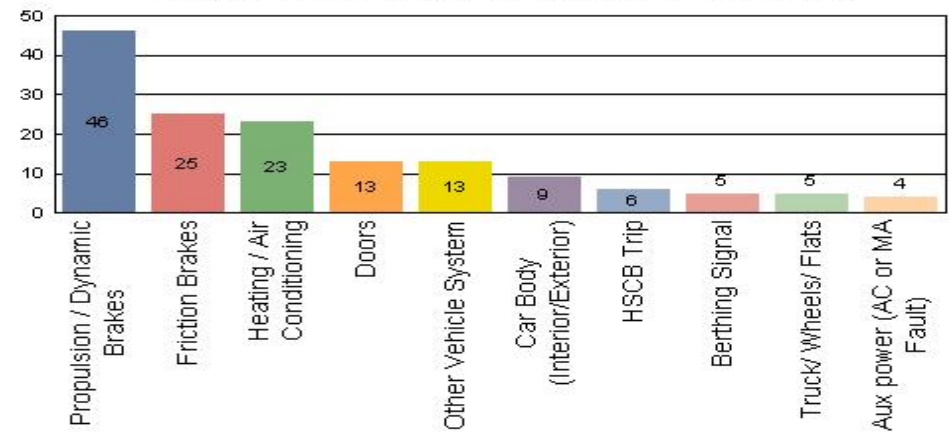
## Metro Blue Line

Count of the Top 10 Incident Problems



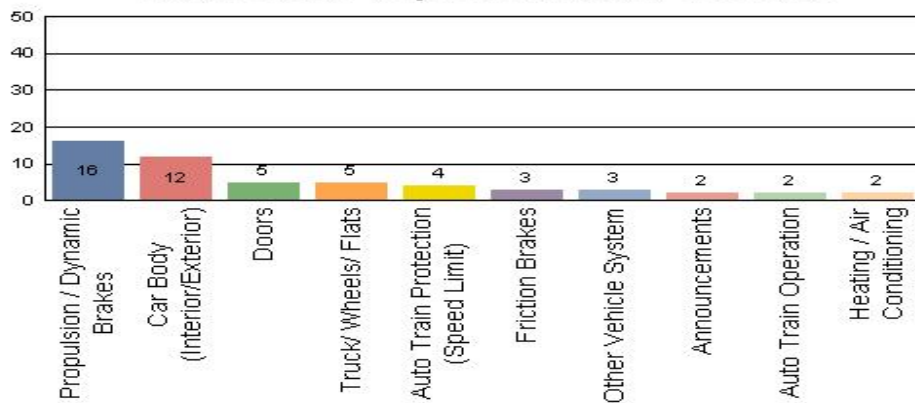
## Metro Red Line

Count of the Top 10 Incident Problems



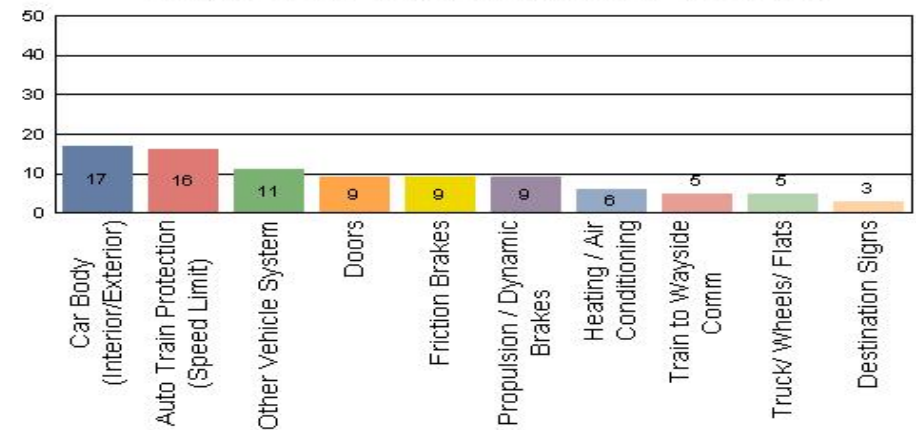
## Metro Green Line

Count of the Top 10 Incident Problems



## Metro Gold Line

Count of the Top 10 Incident Problems



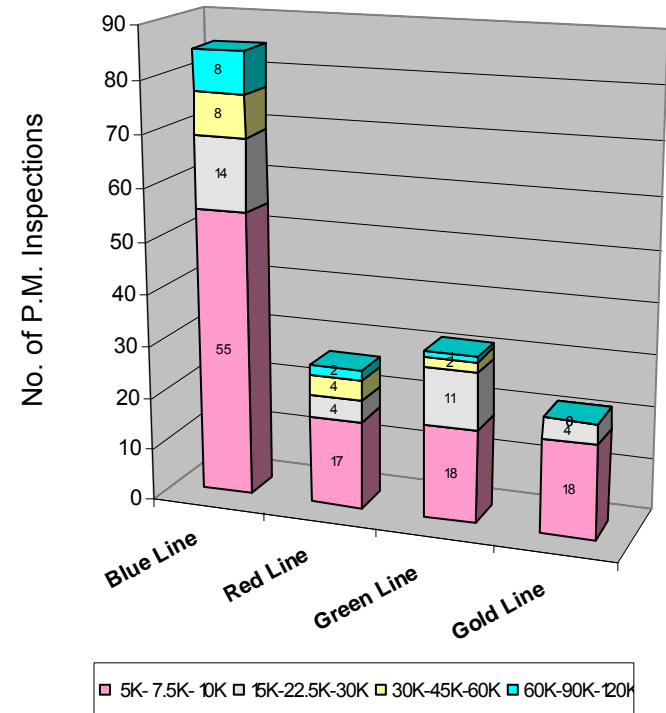
# Preventative Maintenance Compliance

## August 2010

Averages	Aug-09	Sep-09	Oct-09	Nov-09	Dec-09	Jan-10	Feb-10	Mar-10	Apr-10	May-10	Jun-10	Jul-10	Aug-10
Blue Line	100%	100%	100%	100%	100%	100%	100%	100%	100%	100%	100%	100%	100%
Red Line	100%	100%	100%	100%	100%	100%	100%	100%	100%	100%	100%	100%	100%
Green Line	100%	100%	100%	100%	100%	100%	100%	100%	100%	100%	100%	100%	100%
Gold Line	100%	100%	100%	100%	100%	100%	100%	100%	100%	100%	100%	100%	100%

### August 2010 Preventative Maintenance Inspections

No. of P.M. Inspections	5K-7.5K-10K	15K-22.5K-30K	30K-45K-60K	60K-90K-120K	Totals	Percent Compliance
Blue Line	55	14	8	8	85	100%
Red Line	17	4	4	2	27	100%
Green Line	18	11	2	1	32	100%
Gold Line	18	4	0	0	22	100%
Totals:	108	33	14	11	166	100%

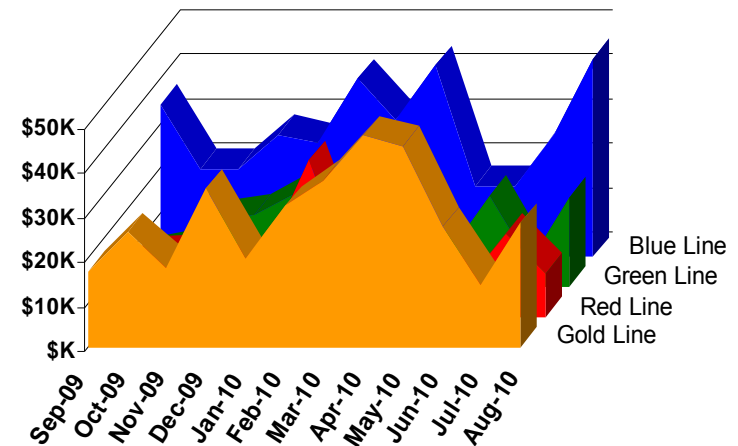


# Vandalism & Graffiti Report

## August 2010

	Sep-09	Oct-09	Nov-09	Dec-09	Jan-10	Feb-10	Mar-10	Apr-10	May-10	Jun-10	Jul-10	Aug-10	Year-to-Date
Blue Line	\$34,318	\$19,686	\$19,757	\$27,409	\$25,519	\$40,085	\$30,557	\$42,951	\$15,825	\$15,888	\$27,868	\$41,374	\$341,237
Green Line	\$6,774	\$8,355	\$14,915	\$16,393	\$20,985	\$35,216	\$20,933	\$7,585	\$8,615	\$20,555	\$5,380	\$20,226	\$185,932
Red Line	\$10,375	\$13,684	\$14,334	\$11,227	\$15,838	\$13,809	\$11,162	\$12,115	\$11,001	\$7,715	\$18,777	\$9,737	\$149,774
Gold Line	\$17,062	\$25,750	\$17,992	\$35,479	\$19,892	\$31,808	\$37,462	\$47,526	\$45,114	\$27,086	\$14,117	\$27,962	\$347,251
Totals	\$68,529	\$67,475	\$66,998	\$90,508	\$82,234	\$120,918	\$100,114	\$110,177	\$80,555	\$71,244	\$66,142	\$99,299	\$1,024,194

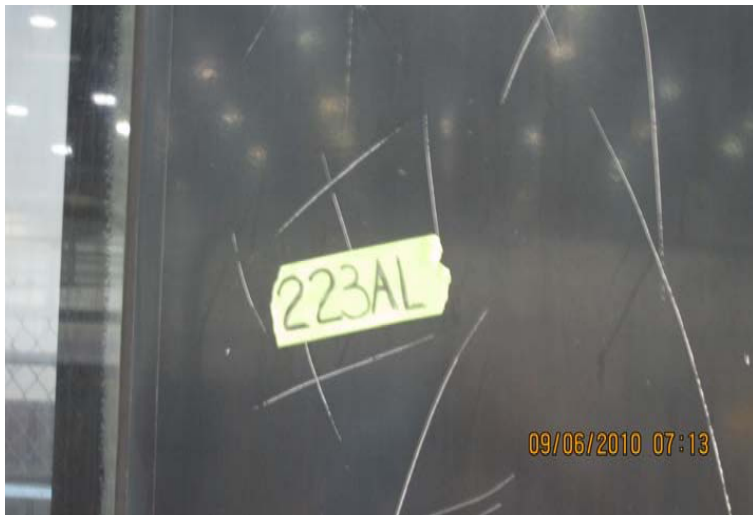
August 2010 Vandalism & Graffiti - All Rail				
	Qty	Labor	Materials	Totals
Windows replaced	62	\$6,552	\$11,535	\$ 18,087
Vandal Shields	547	\$12,474	\$6,406	\$ 18,880
Seats Cleaned	1,110	\$3,110	\$0	\$ 3,110
Seats Replaced	142	\$4,473	\$5,180	\$ 9,653
Ext/Int Repairs	403	\$21,321	\$5,159	\$ 26,480
Totals for August 2010		\$70,011	\$29,288	\$ 99,299



# Graffiti Pictures August 2010



A - Metro Blue Line



B - Metro Green Line



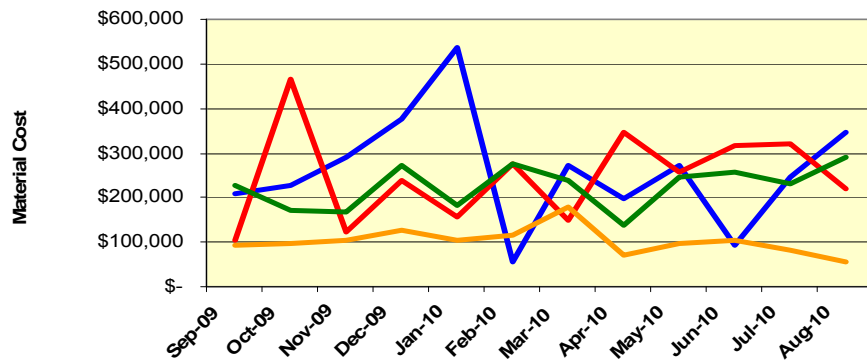
C - Metro Gold Line

# Material and Labor Costs

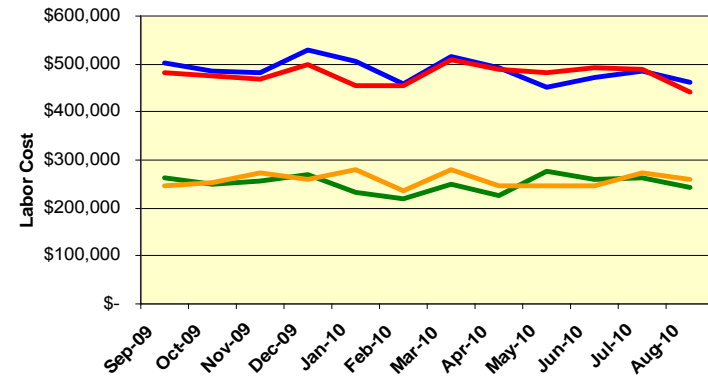
## August 2010

MATERIALS	Sep-09	Oct-09	Nov-09	Dec-09	Jan-10	Feb-10	Mar-10	Apr-10	May-10	Jun-10	Jul-10	Aug-10	Totals
Blue Line	\$ 207,364	\$ 225,796	\$ 290,113	\$ 375,541	\$ 535,717	\$ 57,633	\$ 270,743	\$ 197,253	\$ 272,347	\$ 94,924	\$ 245,000	\$ 347,681	\$ 3,120,112
Red Line	\$ 103,550	\$ 466,761	\$ 123,484	\$ 238,738	\$ 157,351	\$ 275,856	\$ 149,720	\$ 348,088	\$ 258,558	\$ 317,139	\$ 321,375	\$ 219,030	\$ 2,979,650
Green Line	\$ 229,080	\$ 169,738	\$ 168,715	\$ 272,871	\$ 184,149	\$ 276,116	\$ 240,194	\$ 136,768	\$ 244,408	\$ 256,000	\$ 231,296	\$ 291,938	\$ 2,701,273
Gold Line	\$ 93,780	\$ 96,151	\$ 106,126	\$ 128,297	\$ 105,109	\$ 117,356	\$ 179,658	\$ 72,343	\$ 98,102	\$ 105,801	\$ 81,897	\$ 57,693	\$ 1,242,314
Totals	\$ 633,774	\$ 958,446	\$ 688,438	\$ 1,015,447	\$ 982,326	\$ 726,961	\$ 840,315	\$ 754,453	\$ 873,415	\$ 773,864	\$ 879,567	\$ 916,342	\$ 8,247,440

Material Costs



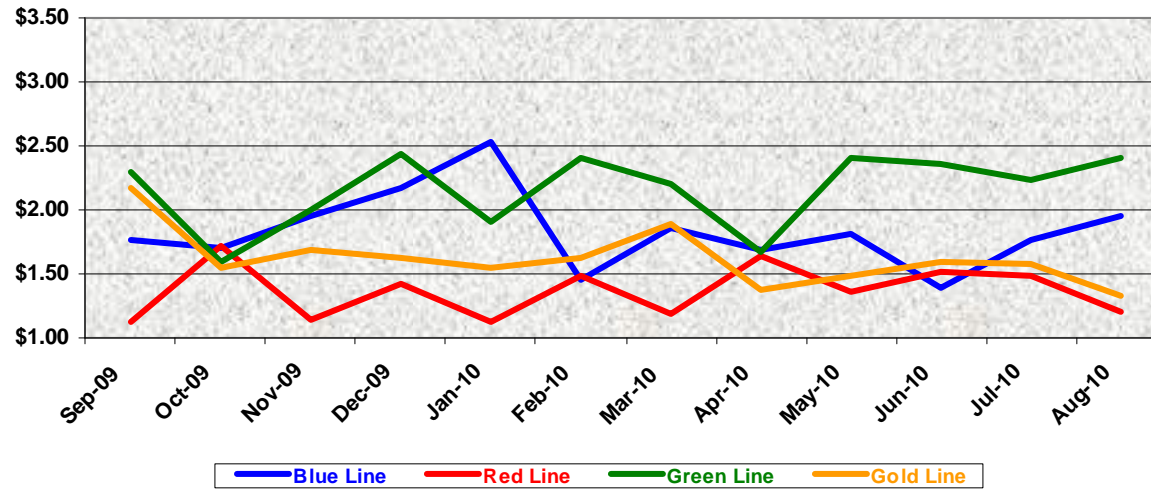
Labor Costs



LABOR	Sep-09	Oct-09	Nov-09	Dec-09	Jan-10	Feb-10	Mar-10	Apr-10	May-10	Jun-10	Jul-10	Aug-10
Blue Line	\$ 501,060	\$ 487,020	\$ 483,394	\$ 527,760	\$ 505,239	\$ 458,335	\$ 515,305	\$ 492,862	\$ 451,979	\$ 472,293	\$ 484,536	\$ 462,218
Red Line	\$ 481,469	\$ 474,751	\$ 468,331	\$ 498,786	\$ 453,571	\$ 453,580	\$ 510,664	\$ 487,627	\$ 482,974	\$ 492,936	\$ 487,742	\$ 442,482
Green Line	\$ 263,718	\$ 248,915	\$ 256,078	\$ 269,668	\$ 231,918	\$ 218,637	\$ 248,224	\$ 225,004	\$ 276,665	\$ 258,297	\$ 262,563	\$ 241,807
Gold Line	\$ 246,807	\$ 251,309	\$ 271,694	\$ 259,793	\$ 278,537	\$ 237,594	\$ 279,935	\$ 247,135	\$ 247,474	\$ 247,000	\$ 271,885	\$ 257,900
Totals	\$ 1,493,054	\$ 1,461,995	\$ 1,479,498	\$ 1,556,008	\$ 1,469,265	\$ 1,368,146	\$ 1,554,128	\$ 1,452,628	\$ 1,459,092	\$ 1,470,526	\$ 1,506,727	\$ 1,404,407

# Cost Per Mile August 2010

Cost per mile:	Sep-09	Oct-09	Nov-09	Dec-09	Jan-10	Feb-10	Mar-10	Apr-10	May-10	Jun-10	Jul-10	Aug-10	Average
Blue Line	\$1.76	\$1.71	\$1.96	\$2.18	\$2.53	\$1.45	\$1.85	\$1.69	\$1.82	\$1.39	\$1.77	\$1.95	\$1.84
Red Line	\$1.12	\$1.71	\$1.15	\$1.42	\$1.13	\$1.48	\$1.19	\$1.64	\$1.36	\$1.51	\$1.48	\$1.21	\$1.37
Green Line	\$2.29	\$1.59	\$2.01	\$2.43	\$1.91	\$2.41	\$2.20	\$1.67	\$2.41	\$2.36	\$2.24	\$2.40	\$2.16
Gold Line	\$2.17	\$1.55	\$1.69	\$1.62	\$1.55	\$1.62	\$1.89	\$1.37	\$1.49	\$1.59	\$1.59	\$1.33	\$1.62



No facility costs are included

# Absences vs. Overtime

## August 2010

<b>ABSENCE TYPE and HOURS</b>	<b>3940</b>	<b>3941</b>	<b>3942</b>	<b>3943</b>	<b>3944</b>	<b>Total</b>
BER-BEREAVEMENT		8.00	56.00		40.00	104.00
CTO-COMPENSATORY TIME OFF	32.00	30.00	104.00	40.00	96.00	302.00
CVA - CASUAL VACATION		4.00	1,420.00	11.50	200.00	1,635.50
DSL-DISABILITY LEAVE/LONG		176.00	240.00			416.00
EFH-EMG. FLOAT HOL.		24.00	80.00	48.00	48.00	200.00
ETO-EXCUSED TIME OFF		30.00	12.40	2.50	27.02	71.92
FML-FAMILY CARE LEAVE		120.00	304.00	192.00	152.00	768.00
HLF-HOLIDAY FLOATING	88.00	616.00	372.00	72.00	160.00	1,308.00
II-INDUSTRIAL INJURY		472.00		128.00		600.00
JUR-JURY DUTY		24.00	32.00		24.00	80.00
LC1-LABOR CODE 233		176.00	220.42	40.00	40.00	476.42
LTI-OCCPIL/LONGTRM INJ LEAVE			80.00			80.00
MLN-MILITARY ABSENCE-UNPAID			24.00	8.00		32.00
RTO-REQUESTED TIME OFF-NO PAY		24.00				24.00
SCK-SICK PAY	16.00	173.32	200.00	88.00	80.00	557.32
SCW-SICK WITHOUT PAY			90.12	168.00	8.00	266.12
SUP-TEMPORARY SUPERVISOR		299.50	170.00	238.40	133.38	841.28
UB-UNION BUSINESS				8.00		8.00
VAC-VACATION	152.00	1,301.33	515.60	520.00	512.00	3,000.93
<b>Total Absence Hours</b>	<b>288.00</b>	<b>3,478.15</b>	<b>3,920.54</b>	<b>1,564.40</b>	<b>1,520.40</b>	<b>10,771.49</b>
Number of Work Force (assigned)	<b>18.00</b>	<b>106.00</b>	<b>106.00</b>	<b>48.00</b>	<b>49.00</b>	<b>327.00</b>
Full Work Force hours/month	<b>3,119.40</b>	<b>18,369.80</b>	<b>18,369.80</b>	<b>8,318.40</b>	<b>8,491.70</b>	<b>56,669.10</b>
<b>Absence as a % of Work Force</b>	<b>9%</b>	<b>19%</b>	<b>21%</b>	<b>19%</b>	<b>18%</b>	<b>19%</b>
<b>OVERTIME TYPE and HOURS</b>	<b>3940</b>	<b>3941</b>	<b>3942</b>	<b>3943</b>	<b>3944</b>	<b>Total</b>
CTB-COMPENSATORY TIME TO BANK	11.00	224.32	334.79	185.64	148.83	904.58
OTP-PREM OVERTIME	242.00	783.08	1,003.18	795.75	1,061.87	3,885.88
WLO-Worked Lunch Overtme	0.00	26.00	103.00	35.50	68.01	232.51
<b>Total</b>	<b>253.00</b>	<b>1,033.40</b>	<b>1,440.97</b>	<b>1,016.89</b>	<b>1,278.71</b>	<b>5,022.97</b>
<b>Overtime as a % of Work Force</b>	<b>8%</b>	<b>6%</b>	<b>8%</b>	<b>12%</b>	<b>15%</b>	<b>9%</b>
<b>UNCOVERED ABSENCES</b>	<b>3940</b>	<b>3941</b>	<b>3942</b>	<b>3943</b>	<b>3944</b>	<b>Total</b>
Absences FTE	1.66	20.07	22.62	9.03	8.77	62.14
OTP FTE	1.46	5.96	8.31	5.87	7.38	28.98
<b>FTE Difference</b>	<b>0.20</b>	<b>14.10</b>	<b>14.31</b>	<b>3.16</b>	<b>1.39</b>	<b>33.17</b>



# Rail Vehicle Engineering Project Summary

## August 2010

Program		Major Projects	
A650 Refurbishment    Expo Readiness P865/P2000 Fleets    P2000 Signal Package Conversion    Protran Worker Protection Device			
P2000 Component Overhaul    P2550 Vehicle Acceptance    P3010 Vehicle Acquisition    MBL Overhaul			
Technical Specifications			
MBL, MGL, MRL, MGD (all fleets):		Bombardier to assemble 4 gearboxes    Repair/Overhaul Gearbox (specification in process)    P2000 Axle Assembly, P865/P2020 Axle Assembly    Red Line Journal Bearing Overhaul    P2000 HVAC Suttrak Units Overhaul    Chevron Springs	
Active Test Bulletins			
MBL (P865/P2020):		Inspection interval investigation (5K-7.5K)    Door capacitor    Solid state relay    Raise Motor Alternator Trip Setting    Replace GRS/TWC with H&K TWC    Moisture Eliminator Gutter-Chopper	
MRL (A650 Base):		Chevron springs    DC-AC traction motor blower    GE gear unit	
MRL (A650 Option):		Pinion shaft    Emergency door seal    Gearbox    Air spring    Vandal shield    Rubber boots (retest)    Brushes    Motor evaporator	
MGL (P2000):		Door operator assembly	
Active Modification Bulletins			
MBL (P865/P2020):		Watch gap, Wheelchair, Security cameras    Battery disconnect decals    Gearbox long breather tube	
MBL (P2000):		Add TWC route select feature    No acceleration during ATP Overspeed	
MRL (A650 Option/Base):		FCC high voltage decal    Remove trip switch wiring    Manual controller modification by American Transit    Front door latch    Replace end door threshold plate    Dead battery start    Buss bar isolation    ATO overspeed brake rate	
MGL (P2000):		Master controller with new cam profiles    Removal of convex mirror head    Spin/slide sanding modification	
MGDL (P2000):		Battery disconnect decals	
Active Technical Request Form			
MBL (P865/P2020):		Destination signs    Journal bearing    Air compressor motor    Chopper intake    Damper assembly    Knorr washer    Motor alternator set CB1 tripping problem	
MRL (A650 Option/Base):		ATO berthing    Flender gearbox    Pinion shaft    Coupler corrosion cover    Gate drive power supply    Location decal    Rectifier    Door latching relay    Twist lug connector    Thermistor & TLR circuit failures    PA system & air whistle/horn faults    Safety Cable    Hand Assistance Strap    Contact Adhesive Flooring    H-4 Glass    Blower motor impeller    Bearing Grease	
MGL (P2000):		Door operator assemble repair vendor    Sanding system    Air vent grille    Exterior rear view mirror    Sun shade gear latch    Car 201 technical assistance    EMI trip faults    HVAC motor	
MGDL (P2000/P2550):		Truck tramming investigation    Operator door assembly overhaul    Diver cab window glass	

# P2550 Vehicle Acceptance Program

## August 2010

### Vehicle Status Update:

- 41 cars at Metro
- 39 cars at MGDL
- 2 cars at MBL
- A total of 39 Cars Conditionally Accepted (CA)
- One car accepted in August.
- 9 Cars at Pittsburg Assembly Plant

### Engineering Activities Update:

- Event recorder – AB tested (3) software versions to qualify the system; ATP communications to the event recorder requires further debugging. The work is ongoing.
- ATP “250 Hz filter” faults reported to the ATP system. ASTS sent monitoring diagnostic software and locked in the fault causing the drift problem. Software upgrade is forthcoming. The work is ongoing.
- Traction Motor HV Junction Box – Twenty (20) pieces have been manufactured and shipped; installation to commence in September.
- Brake Overhaul – Two complete car sets have been shipped to Knorr facilities for overhaul. An exchange program and schedule is being developed. The work is ongoing.

### Production Car Status – Pittsburg:

- Car 744 - 95% complete, final inspection in process
- Car 745 - 75% complete, electrical testing in process
- Car 746 - 85% complete, assembly in process
- Cars 747, 748, 749, 750 - 20 to 70% complete, assembly in process
- Cars 701 & 702 – Replacement wiring harness and cables to arrive Pittsburg early September. AB hired electrical contractor to perform rewire installation.

### Project Management:

- Contract spares are being process and delivered to Metro
- The next Project Review Meeting is schedule for October
- Daily and weekly meetings with AB Project Management to solve revenue service issues.

# QA-Warranty Program Projects Summary

## August 2010

### ADMINISTRATION

- QA Audit Programs – CPUC Preps, QA conducted Tool Calibration Audits at each Division. Performance evaluation grades forwarded to upper management, as well as to the Inspector General (PMI) investigation probe continues interviews being conducted at each Division; thus far no reports or documented updates received for the IG Office.
- P2550 Contract Programs i.e., RDT restart 9/25, vehicle acceptance inspections, Bar Code implementation review, IPC review & ABI deliverables continues.
- P2550 Projects- Warranty issues, Spare Parts tracking and Cost Avoidance recovery documentation.
- Special Projects & Technical Assist Programs, RWES' continue to assist both Engineering & Maintenance solving vehicle problems & investigations.
- Program Audits, Parts Processing, Cost Avoidance Recovery Data, Video Surveillance Archives, and Safety, Accident & Incident investigation reports, Warranty Processing Processing information. Data available via QA-Warranty's Share Drive.

### ERS ACTIVITIES

- The ERS' are implementing respective division equipment records into Spears M3 System.
- All archived QA documentation & files are available for management inquiry.
- The Video Surveillance records, Incident & Accident Reports have been turned over to ROC as mandated.
- The warranty & cost avoidance records are maintained and up to date.
- Close administrative support for Maintenance continues.

### RED LINE ACTIVITIES

- T/M Mounts & Truck Frames warranty repairs continue, ABI weld repair project oversight observed by QA.
- Performed Tool Calibration Audit & Inspections.
- Performed FAI's on Ground Brushes, Line Breakers & other Electronic Components.
- Special Project support e.g., Compressor Motors, T/M Bearings, Inverters, Oscillators & Coupler Cables, Processed 30 Warranty Parts, 17 R&R's. (Cost Avoidance savings labor & parts = \$27,516.25 )

### BLUE LINE ACTIVITIES

- Performed Calibration Audit & Inspections
- Engineering Technical Support Brake testing, Expo Line TWC Modification supported system issues.
- Process two warranty parts, 37 R&R's, 2497 parts. (Cost Avoidance savings labor and parts = \$18,000.
- Oversee equipment overhaul campaigns (Door systems, Car Body, Lighting Systems, and Car Interior Projects).
- Tech assistant drafted technical procedures for RFSTS, also generated equipment PowerPoint presentations.
- Drafted Technical Testing Bulletins also drafted tech info for the Traction Motor Overhaul Specification.

### GREEN LINE ACTIVITIES

- Supported Engineering solving problem issues with circuit Relays. Overseeing STS 176 Box testing.
- Technical support contribution for overhaul components (doors, traction motors, gearboxes, and brake systems).
- Processed 73 R&R items.
- Performed PMI Audits on Vehicles 223 and 218.
- Performed FAI on Swiger Motors.
- Submitted 4 QA PowerPoint presentations for review.

### GOLD LINE ACTIVITIES

- P2550 - Oversee/review PAAT Acceptance Program.
- Travel to Pittsburgh, California to oversee car build and help resolve open issues.
- Process 160 warranty items (cost avoidance savings labor & parts = \$32,129.57).
- Conduct FAI and parts inspections.
- Supported ABI & RFSTS Engineering with car acceptance test issues.

# Rail Fleet Services Instruction

## August 2010

### Training classes completed during the month of August 2010

Description	Status	Start	End	Course Hours	Student Count	Training Hours
<b>Blue Line Training - (865/2020 &amp; P2000 LRV):</b>						
ETD DEVELOPING YOUR FULL POTENTIAL	Complete	8/26/2010	8/26/2010	3	2	6
OPERATIONS COMPUTER PROGRAM	Complete	8/12/2010	8/12/2010	8	1	8
DRUG AND ALCOHOL REASONABLE SUSPICION DETERMINATION	Complete	8/10/2010	8/10/2010	4	1	4
<b>Total Blue Line Training (Hours):</b>						<b>18</b>
<b>Red Line Training (Breda A650 HRV):</b>						
LEAD HAZARD COMMUNICATION	Complete	8/11/2010	8/11/2010	1.5	34	51
WAYSIDE WORKER PROTECTION	Complete	8/9/2010	8/9/2010	4	1	4
RFS BRED A 650 GRS A.T.P.	Complete	8/10/2010	8/24/2010	56	1	56
RFS BRED A 650 SIGNALRAIL ATO	Not Complete	8/26/2010	8/27/2010	16	1	16
RAIL SYSTEM SAFETY	Complete	8/11/2010	8/11/2010	3	2	6
RFS HRV RE-RAILING	Complete	8/21/2010	8/21/2010	8	3	24
MANAGING LEAVES OF ABSENCE	Complete	8/25/2010	8/25/2010	3	1	3
RECORDS MANAGEMENT & INFORMATION SECURITY	Complete	8/26/2010	8/26/2010	3	1	3
DRUG AND ALCOHOL REASONABLE SUSPICION DETERMINATION	Complete	8/10/2010	8/10/2010	4	1	4
<b>Total Red Line Training (Hours):</b>						<b>167</b>
<b>Green Line Training (P2000 LRVs):</b>						
RAIL SYSTEM SAFETY	Complete	8/13/2010	8/13/2010	3	5	15
ADVANCED WRITING - PART 1	Complete	8/12/2010	8/12/2010	3	1	3
EXCEL 2003 - CHARTS	Complete	8/19/2010	8/19/2010	2.5	1	2.5
DRUG AND ALCOHOL REASONABLE SUSPICION DETERMINATION	Complete	8/10/2010	8/10/2010	4	1	4
<b>Total Green Line Training (Hours):</b>						<b>24.5</b>
<b>Gold Line Training (P2550 LRVs):</b>						
ADVANCED WRITING - PART 1	Complete	8/12/2010	8/12/2010	3	1	3
TRANSIT TERRORISM AWARENESS TRAINING	Complete	8/11/2010	8/11/2010	1	1	1
WAYSIDE WORKER PROTECTION	Complete	8/9/2010	8/12/2010	4	23	92
DRUG AND ALCOHOL REASONABLE SUSPICION DETERMINATION	Complete	8/10/2010	8/10/2010	4	1	4
DISABILITIES AWARENESS TRAINING	Complete	8/9/2010	8/9/2010	2	1	2
RAIL SYSTEM SAFETY	Complete	8/2/2010	8/31/2010	3	33	99
<b>Total Gold Line Training (Hours):</b>						<b>201</b>

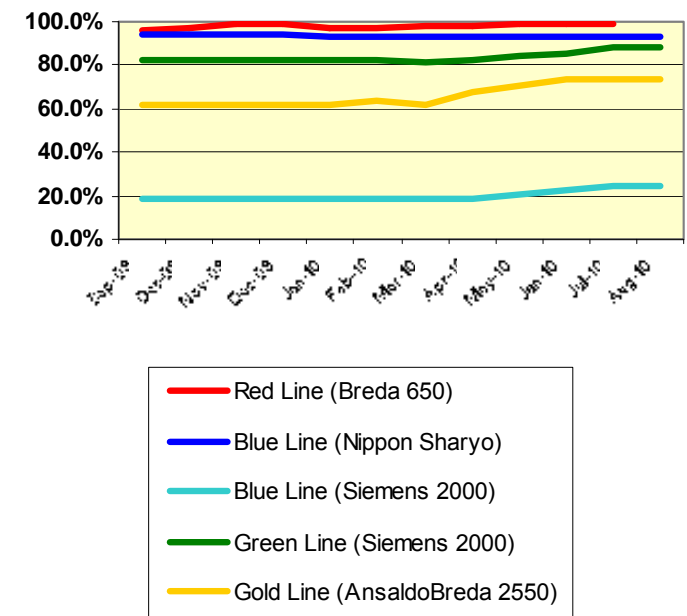
**Total Rail Fleet Services Instruction for the month of August 2010 (Hours): 410.5**

**Core Vehicle Training Completed:** **BLUE RED GREEN GOLD**

**Percentage of core vehicle training complete:** **92.9% 99.3% 87.9% 73.4%**  
**Siemens 2000 training complete:** **24.1% N/A N/A N/A**

**Average Specialist Rail Experience Level in Years:** **10.9 10.8 7.8 9.0**

### Core Training Completed



**Variations caused by new hires, employee transfers, & training completed**