



Rail Fleet Services Monthly Report February 2010



Metro

Table of Contents

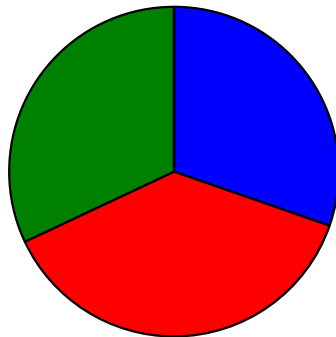
• Safety	
– Industrial Injuries	Page 1
– Rail Vehicle Accidents & Major Incidents	Page 2
– Rail Vehicle Accident Pictures	Page 3
• Customer Service	
– Service Delivery – AM/PM Pull-Outs	Page 4
– Vehicle Utilization – Blue Line & Green Line	Page 5
– Vehicle Utilization – Red Line & Gold Line	Page 6
– Mean Miles Between Failures (Major)	Page 7
– Repeat Failures (Major)	Page 8
• Business Processes	
– Reported Incidents	Page 9
– Preventative Maintenance Compliance	Page 10
• Finance	
– Vandalism & Graffiti Costs	Page 11
– Graffiti Pictures	Page 12
– Material & Labor Costs	Page 13
– Cost per mile	Page 14
– Absence vs. Overtime	Page 15
• Growth	
– Rail Fleet Service Training	Page 16

Industrial Injuries – Lost Work Hours

February 2010

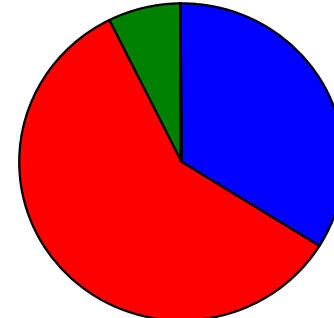
	Mar-09	Apr-09	May-09	Jun-09	Jul-09	Aug-09	Sep-09	Oct-09	Nov-09	Dec-09	Jan-10	Feb-10	Year to Date
Blue Line	280	176	160	208	144	48	112	352	288	200	176	160	2,304
Red Line	312	296	344	352	328	456	328	344	356	352	352	200	4,020
Green Line	0	0	0	0	0	0	0	0	8	136	168	168	480
Gold Line	0	0	0	0	0	0	0	0	0	8	0	0	8
Totals	592	472	504	560	472	504	440	696	652	696	696	528	6,812

February 2010 - Lost Work Hours



■ Blue Line ■ Red Line ■ Green Line ■ Gold Line

Year-to-Date Lost Work Hours



■ Blue Line ■ Red Line ■ Green Line ■ Gold Line

	Employees		February 2010 Lost Work Hours			
	Assigned	Active	Service Attendant	Maint. Specialist	Body Repairer /Painter	February 2010 Total Hrs.
Blue Line	108	101	0	0	160	160
Red Line	107	104	200	0	0	200
Green Line	48	47	168	0	0	168
Gold Line	50	48	0	0	0	0
Totals	313	300	368	0	160	528
Total Lost Work Hours for 12-months = 6,812 hours						

Rail Vehicle Accidents & Major Incidents

February 2010

Repair Costs	Mar-09	Apr-09	May-09	Jun-09	Jul-09	Aug-09	Sep-09	Oct-09	Nov-09	Dec-09	Jan-10	Feb-10	Totals
Blue Line	\$9,500	\$111	\$1,480	\$189	\$9,262	\$0	\$2,122	\$0	\$38,396	\$656	\$39,034	\$5,600	\$106,350
Red Line	\$0	\$0	\$104,950	\$0	\$0	\$0	\$0	\$0	\$0	\$0	\$0	\$0	\$104,950
Green Line	\$0	\$0	\$0	\$2,481	\$0	\$0	\$0	\$0	\$0	\$0	\$0	\$0	\$2,481
Gold Line	\$1,231	\$3,235	\$0	\$189	\$0	\$0	\$14,310	\$0	\$3,538	\$0	\$17,028	\$4,404	\$43,935
Totals	\$10,731	\$3,346	\$106,430	\$2,859	\$9,262	\$0	\$16,432	\$0	\$41,934	\$656	\$56,062	\$10,004	\$257,716

Rail Vehicle Accident Costs - February 2010				
Metro Blue Main Line				
2010	Incident #	Problem code	Incident Description	Cost
Feb. 16	1490777	(10-71) Train vs. Other	There is a damaged skirt on car (168A) 162, 112, second skirt on the right side. Stuck dog @ San Pedro Station, Train #7, T-118, track #1, northbound.	\$777.00
Feb. 18	1495927	(10-71) Train vs. Other	Male patron leaned his bicycle onto the yellow between car barriers on the platform and then sat down on the bench. When SB train 9 pulled into station, train bumped bicycle. T-262, Train 9, LRV (104B) 109 101, Pico Station, SB, Track 2.	\$33.00
Feb. 19	1497521	(10-72) Train vs. Pedestrian at Crossing	Train 3, T-29, Fatality @Century Grade Crossing SB, Track-2, cars 168 131 159.	\$4,031.00
Feb. 21	1499209	(10-73) Train vs. Auto	Auto made left in to Train 3, T-225 reported a 10-73 at 5th and Pacific, north of Pacific station.	\$759.00
TOTAL FOR METRO BLUE LINE				\$5,600.00
Metro Gold Line				
Feb. 7	1477015	(10-73) Train vs. Auto	Train 2, T-270 Cars (241)-247 Track 2, southbound at Avenue 53, reports 10-73	\$2,810.00
Feb. 9	1479465	(10-75) Derailment	Hi-Rail Vehicle train 85 derailed as it was approaching Yard Limit sign. Hi-Rail vehicle #0030	\$0.00
Feb. 21	1499305	(10-71) Train vs. Other	Skirt damage on car (724B)715. Lake Station, Train #6, T-	\$1,594.00
TOTAL FOR METRO GOLD LINE				\$4,404.00
GRAND TOTAL COST				\$10,004.00
No accidents for Red Line and Green Line				
(10-71) = Train vs. Object, (10-72) = Train vs. Pedestrian, (10-73) = Train vs. Vehicle (10-74) = Train vs. MTA Vehicle, (10-75) = Derailment				



Rail Vehicle Accident Pictures

February 2010



02/07/2010 Train vs. Auto (10-73) Car 241B Track 1 Avenue 53 Grade Crossing South Pasadena – Metro Gold Line



02/21/2010 Train vs. Tire (10-71) Car 724A-715 Track 2 Lake and Allen Station – Metro Gold Line

Service Delivery – AM/PM Pull-Outs

February 2010

Cars Available for AM/PM Pull-Outs

Blue Line – Fleet Size 69 cars

- Weekday pull-out: 60 cars
- Weekend pull-out: 36 cars
- **Monthly Mileage: 355,274 miles**

Red Line - Fleet Size 104 cars

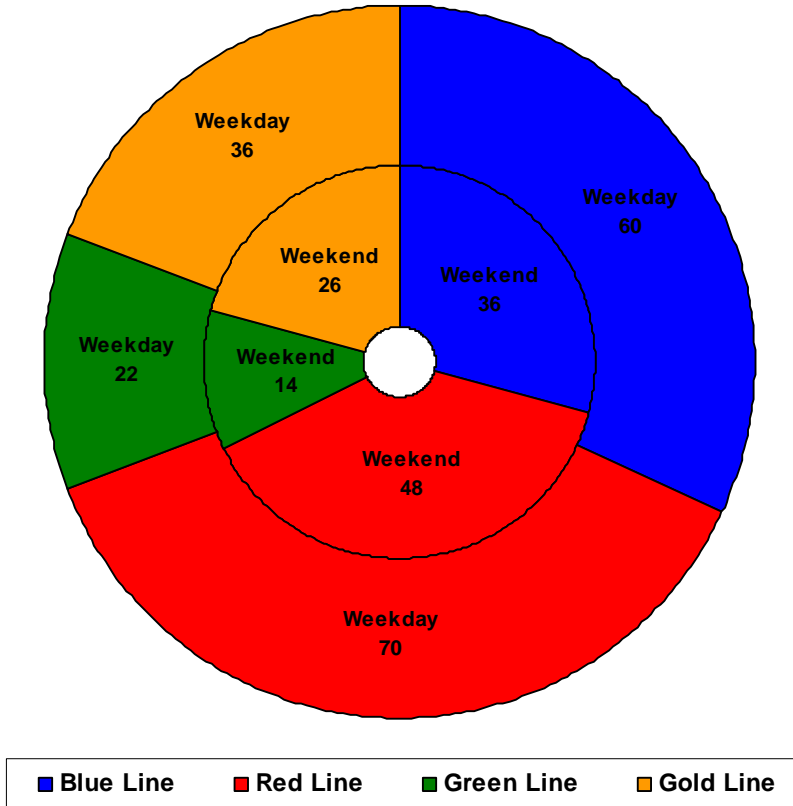
- Weekday pull-out: 70 cars
- Weekend pull-out: 48 cars
- **Monthly Mileage: 491,410 miles**

Green Line – Fleet Size 28 cars

- Weekday pull-out: 22 cars
- Weekend pull-out: 14 cars
- **Monthly Mileage: 205,547 miles**

Gold Line – Fleet Size 49 cars

- Weekday pull-out: 36 cars
- Weekend pull-out: 26 cars
- **Monthly Mileage: 218,638 miles**



Vehicle Utilization

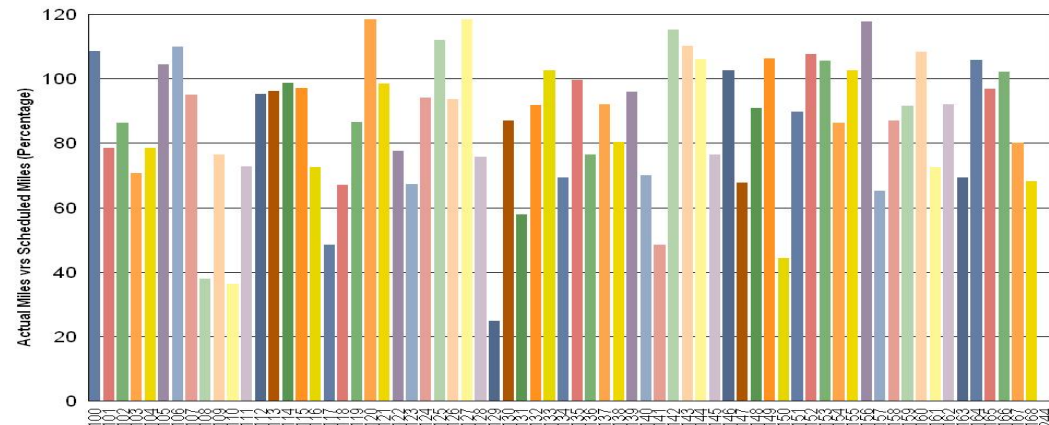
February 2010

Blue Line - Car 129 was in the Body Shop from 01/25/10 to 02/21/10 for floor repair and also air piping replacement. This vehicle was involved in a 10-71 in which a sign post went through the floor of the car and also damaging air piping.

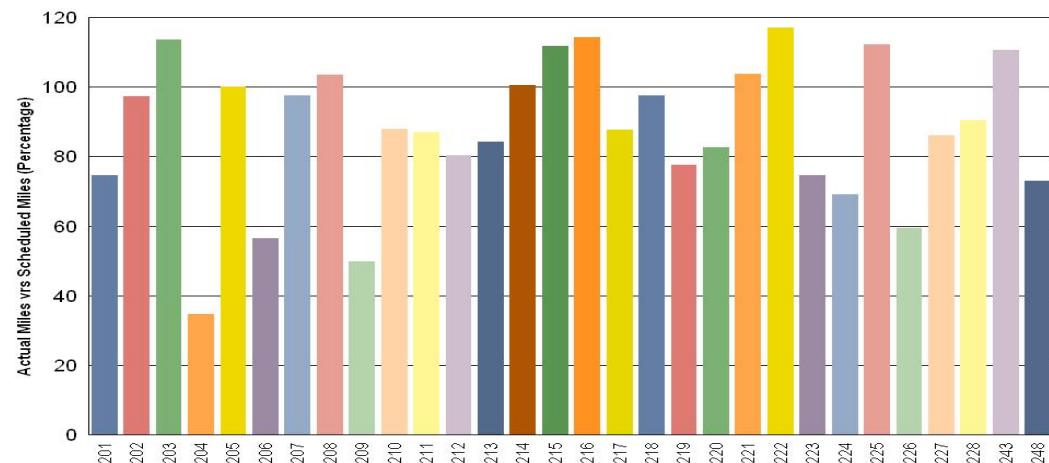
Note: Percentage includes an average 4% mileage deduction for Yard mileage and Vehicle Testing.

Green Line – Car 204 had intermittent cab signal failures for the month of February.

Metro Blue Line



Metro Green Line



Vehicle Utilization

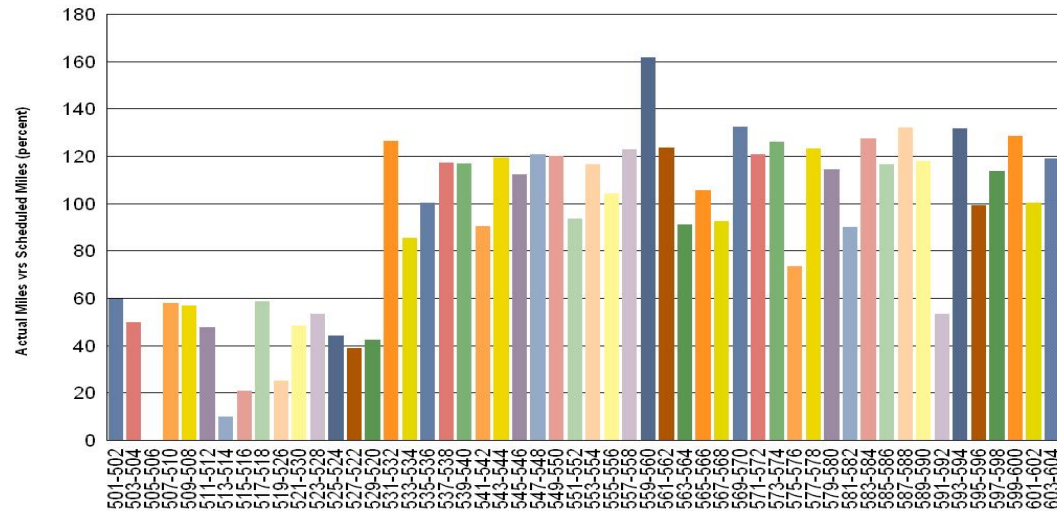
February 2010

Red Line - The original 30 Base Buy cars are not being used to their fullest potential due to propulsion problems.

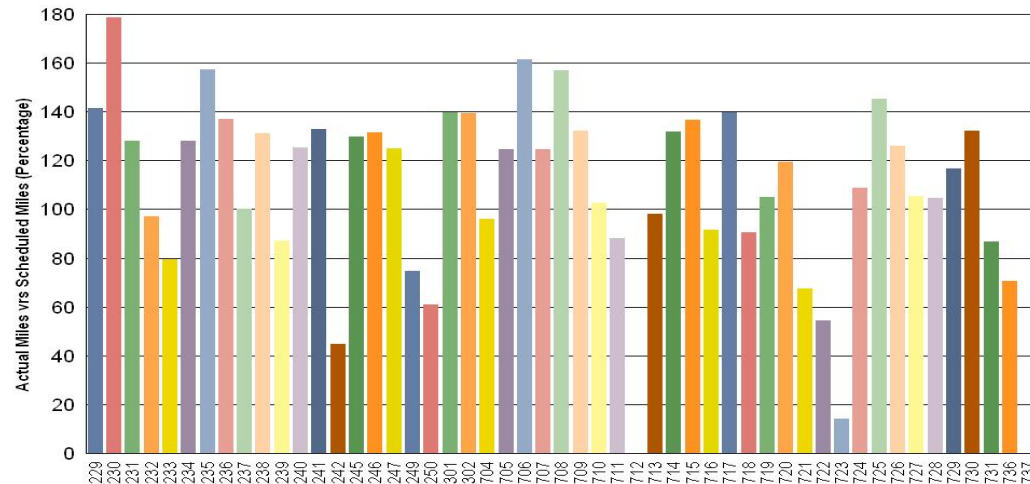
Percentage includes an average 4% mileage deduction for Yard mileage and Vehicle Testing.

Gold Line - Car #712 was involved in a 10-73 accident (train vs. auto) on 01/29/10 and under repairs. Breda needs to install a replacement door sensitive edge. Breda has been working on Car #723 ATP/IDU Communications Buss (downloads & testing a new engineering configuration) since 2/12/10. Car 737 was conditionally accepted on 2/23/10. MTA decals & mods had to be installed (about a week's work).

Metro Red Line



Metro Gold Line



Mean Miles Between Failures (Major) February 2010

Miles Between Major Failures

Blue Line: 18,699 miles (19 Major Failures)

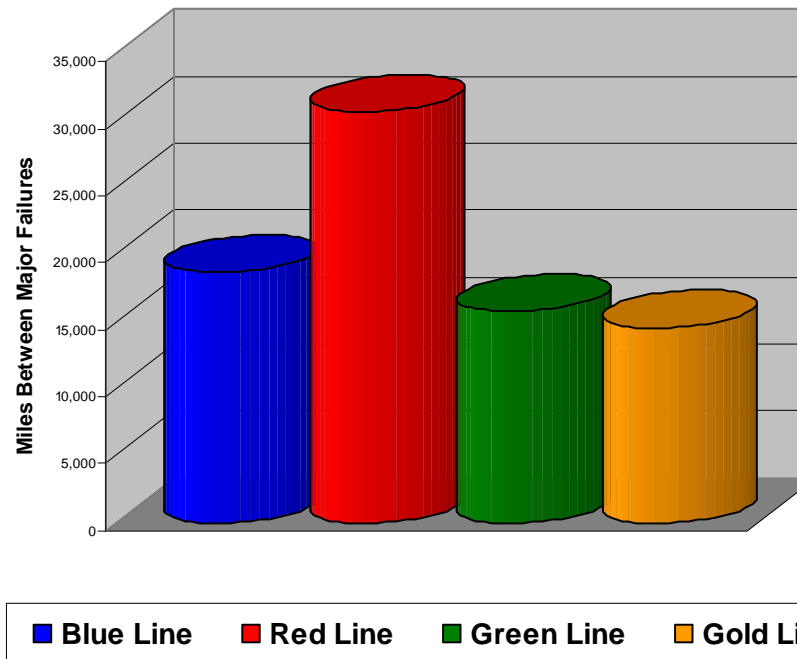
Red Line: 30,713 miles (16 Major Failures)

Green Line: 15,811 miles (13 Major Failures)

Gold Line: 14,576 miles (15 Major Failures)

Siemens P2000 11,056 miles (9 Major Failures)

AnsaldoBreda P2550 19,855 miles (6 Major Failures)



Major Failure: When a train does not complete its scheduled run or is more than 5 minutes late of its scheduled arrival time.

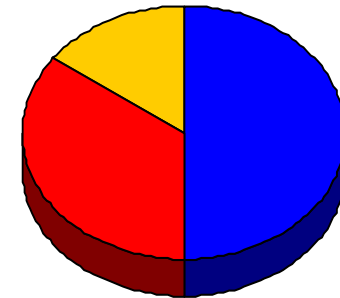
Repeat Failures (Major) February 2010

Metro Blue Line: 10 Repeat Failures

Metro Red Line: 7 Repeat Failures

Metro Green Line: 0 Repeat Failures

Metro Gold Line: 3 Repeat Failures



■ Blue Line ■ Red Line ■ Green Line ■ Gold Line

Repeater Car Details - February 2010

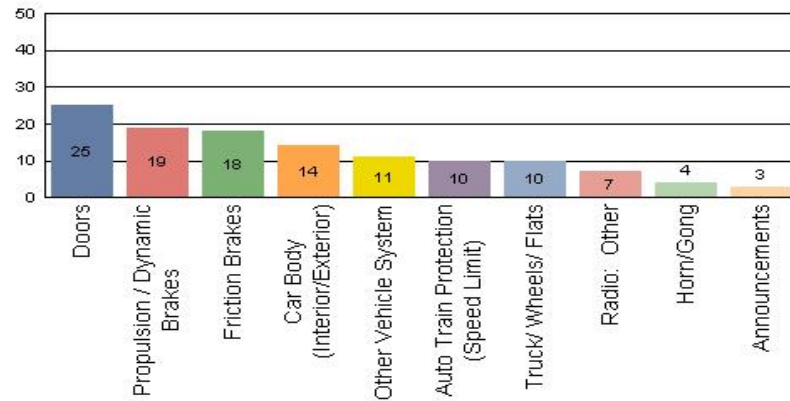
System	Blue Line		Red Line		Green Line		Gold Line	
	Car #	Repeats	Car #	Repeats	Car #	Repeats	Car #	Repeats
ATP	151	1	534	1				
Aux Power			576	1				
Doors	151	1	550	2				
Friction Brakes	102	1						
	134	2	591	1				
HVAC							302	1
Other Vehicle System							302	1
Pantograph/Collector Shoe								
Propulsion/Dynamic Brake	161	3					235	1
Radio	142	1						
Truck/Wheel/Flats	147	1	570	1				
TOTALS	10		7		0		3	

Repeat Failure: When a train car has three or more major repeat problems/failures.

Reported Incidents February 2010

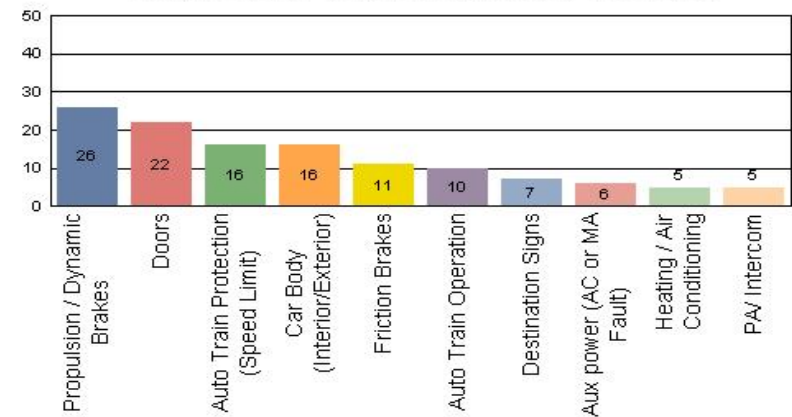
Metro Blue Line

Count of the Top 10 Incident Problems



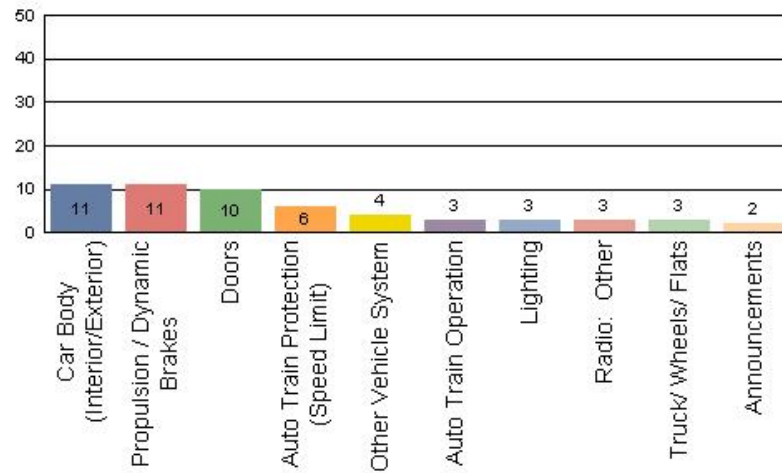
Metro Red Line

Count of the Top 10 Incident Problems



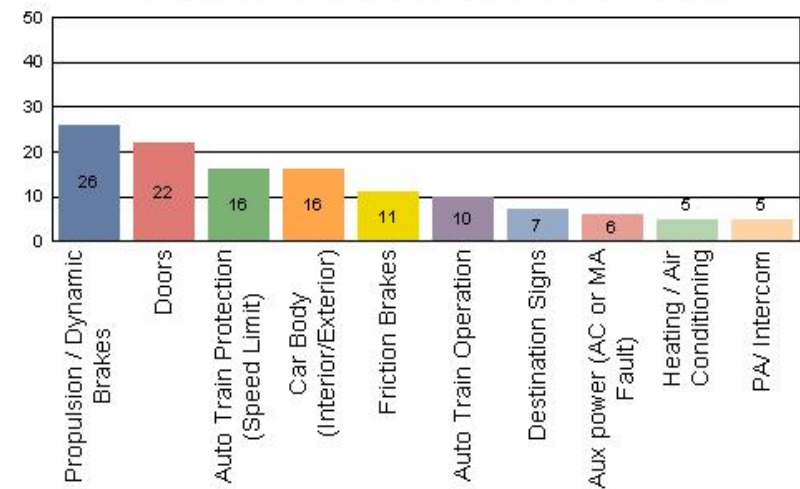
Metro Green Line

Count of the Top 10 Incident Problems



Metro Gold Line

Count of the Top 10 Incident Problems



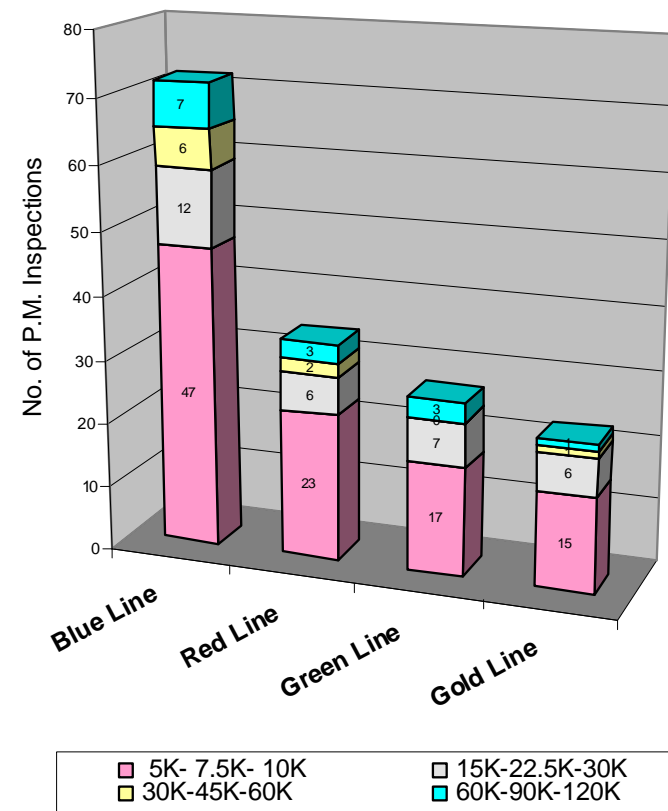
Preventative Maintenance Compliance

February 2009

Averages	Feb-09	Mar-09	Apr-09	May-09	Jun-09	Jul-09	Aug-09	Sep-09	Oct-09	Nov-09	Dec-09	Jan-10	Feb-10
Blue Line	100%	100%	100%	100%	100%	100%	100%	100%	100%	100%	100%	100%	100%
Red Line	100%	100%	100%	100%	100%	94%	100%	100%	100%	100%	100%	100%	100%
Green Line	93%	97%	100%	100%	100%	100%	100%	100%	100%	100%	100%	100%	100%
Gold Line	100%	100%	100%	100%	100%	100%	100%	100%	100%	100%	100%	100%	100%

February 2010 Preventative Maintenance Inspections

No. of P.M. Inspections	5K-7.5K-10K	15K-22.5K-30K	30K-45K-60K	60K-90K-120K	Totals	Percent Compliance
Blue Line	47	12	6	7	72	100%
Red Line	23	6	2	3	34	100%
Green Line	17	7	0	3	27	100%
Gold Line	15	6	1	1	23	100%
Totals:	102	31	9	14	156	100%

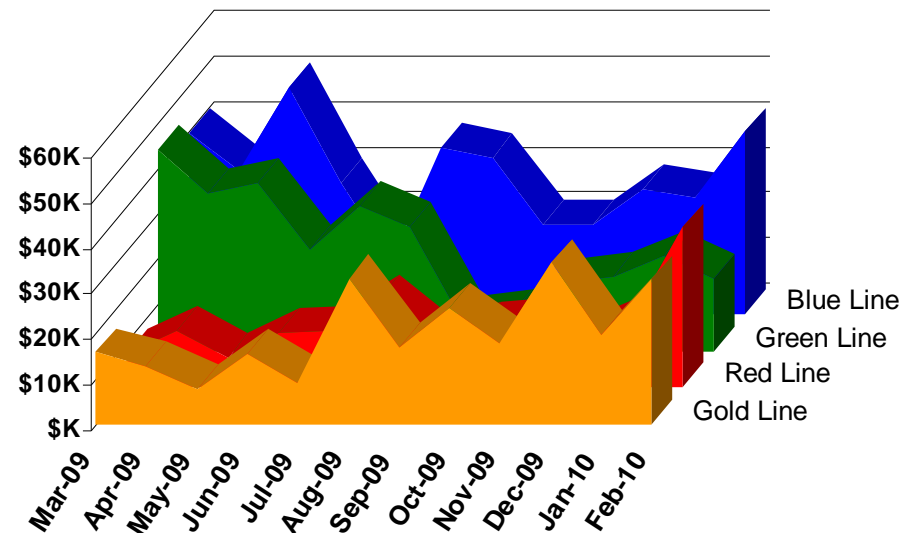


Vandalism & Graffiti Report

February 2010

	Mar-09	Apr-09	May-09	Jun-09	Jul-09	Aug-09	Sep-09	Oct-09	Nov-09	Dec-09	Jan-10	Feb-10	Year-to-Date
Blue Line	\$39,975	\$31,349	\$50,062	\$28,914	\$11,909	\$36,475	\$34,318	\$19,686	\$19,757	\$27,409	\$25,519	\$40,085	\$365,458
Green Line	\$44,211	\$34,775	\$36,921	\$22,307	\$31,788	\$27,501	\$6,774	\$8,355	\$14,915	\$16,393	\$20,985	\$35,216	\$300,141
Red Line	\$7,529	\$12,499	\$6,513	\$12,013	\$12,562	\$19,237	\$10,375	\$13,684	\$14,334	\$11,227	\$15,838	\$13,809	\$149,620
Gold Line	\$15,808	\$12,707	\$7,651	\$15,543	\$9,213	\$32,051	\$17,062	\$25,750	\$17,992	\$35,479	\$19,892	\$31,808	\$240,956
Totals	\$107,523	\$91,330	\$101,147	\$78,777	\$65,472	\$115,264	\$68,529	\$67,475	\$66,998	\$90,508	\$82,234	\$120,918	\$1,056,175

February 2010 Vandalism & Graffiti - All Rail				
	Qty	Labor	Materials	Totals
Windows replaced	163	\$14,868	\$23,959	\$ 38,827
Vandal Shields	413	\$12,201	\$6,950	\$ 19,151
Seats Cleaned	3,082	\$7,078	\$0	\$ 7,078
Seats Replaced	107	\$3,371	\$4,182	\$ 7,553
Ext/Int Repairs	1,293	\$33,847	\$6,280	\$ 40,127
Totals for January 2010		\$75,649	\$45,270	\$ 120,918



Graffiti Pictures

February 2010

A



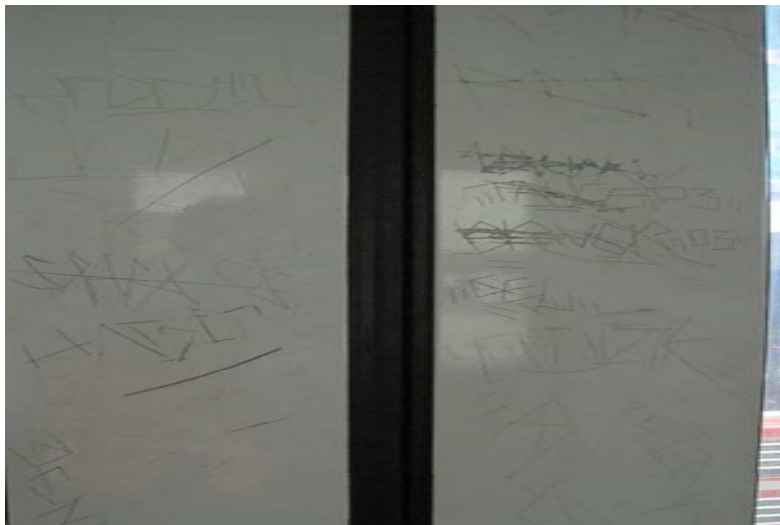
A - Metro Blue Line

B



B - Metro Red Line

C



C - Metro Green Line

D



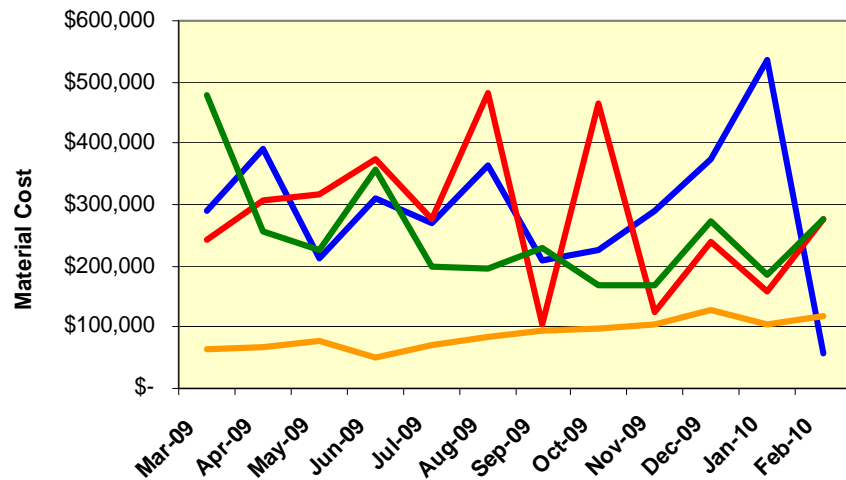
D - Metro Gold Line

Material and Labor Costs

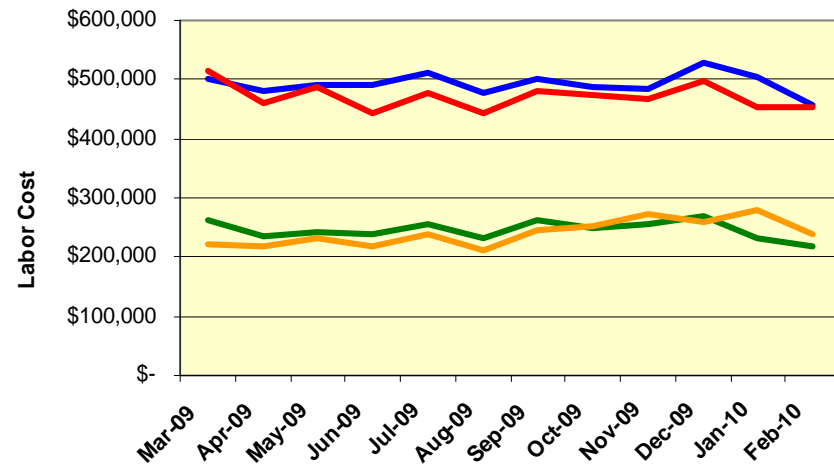
February 2010

<u>MATERIALS</u>	Mar-09	Apr-09	May-09	Jun-09	Jul-09	Aug-09	Sep-09	Oct-09	Nov-09	Dec-09	Jan-10	Feb-10	Totals
Blue Line	\$ 288,898	\$ 389,547	\$ 211,403	\$ 310,619	\$ 268,164	\$ 363,633	\$ 207,364	\$ 225,796	\$ 290,113	\$ 375,541	\$ 535,717	\$ 57,633	\$ 3,524,428
Red Line	\$ 244,239	\$ 306,268	\$ 318,142	\$ 375,408	\$ 275,321	\$ 483,111	\$ 103,550	\$ 466,761	\$ 123,484	\$ 238,738	\$ 157,351	\$ 275,856	\$ 3,368,230
Green Line	\$ 479,278	\$ 256,941	\$ 226,470	\$ 356,213	\$ 199,680	\$ 194,727	\$ 229,080	\$ 169,738	\$ 168,715	\$ 272,871	\$ 184,149	\$ 276,116	\$ 3,013,979
Gold Line	\$ 64,741	\$ 65,968	\$ 78,339	\$ 49,593	\$ 70,787	\$ 84,679	\$ 93,780	\$ 96,151	\$ 106,126	\$ 128,297	\$ 105,109	\$ 117,356	\$ 1,060,927
Totals	\$ 1,077,156	\$ 1,018,725	\$ 834,354	\$ 1,091,833	\$ 813,952	\$ 1,126,150	\$ 633,774	\$ 958,446	\$ 688,438	\$ 1,015,447	\$ 982,326	\$ 726,961	\$ 9,258,277

Material Costs



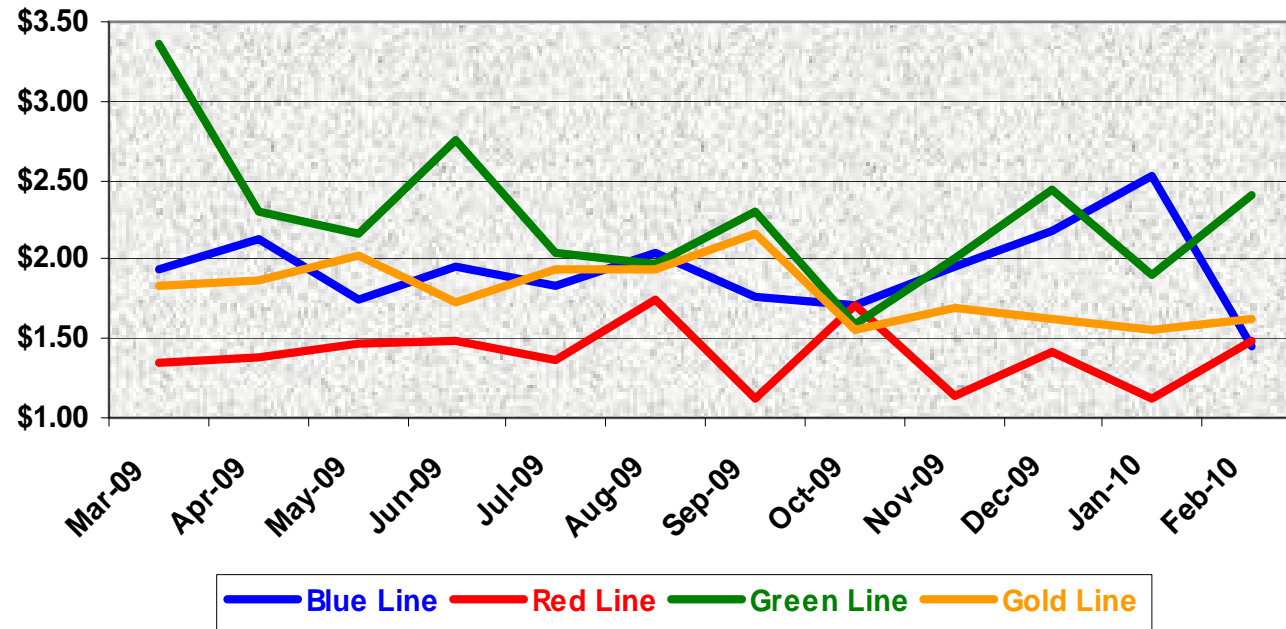
Labor Costs



<u>LABOR</u>	Mar-09	Apr-09	May-09	Jun-09	Jul-09	Aug-09	Sep-09	Oct-09	Nov-09	Dec-09	Jan-10	Feb-10
Blue Line	\$ 500,535	\$ 479,767	\$ 490,441	\$ 491,565	\$ 510,385	\$ 475,663	\$ 501,060	\$ 487,020	\$ 483,394	\$ 527,760	\$ 505,239	\$ 458,335
Red Line	\$ 515,551	\$ 458,819	\$ 488,099	\$ 443,065	\$ 478,135	\$ 444,523	\$ 481,469	\$ 474,751	\$ 468,331	\$ 498,786	\$ 453,571	\$ 453,580
Green Line	\$ 261,029	\$ 235,592	\$ 241,007	\$ 238,192	\$ 257,021	\$ 231,555	\$ 263,718	\$ 248,915	\$ 256,078	\$ 269,668	\$ 231,918	\$ 218,637
Gold Line	\$ 221,065	\$ 218,135	\$ 232,039	\$ 216,686	\$ 237,530	\$ 212,794	\$ 246,807	\$ 251,309	\$ 271,694	\$ 259,793	\$ 278,537	\$ 237,594
Totals	\$ 1,498,180	\$ 1,392,313	\$ 1,451,586	\$ 1,389,509	\$ 1,483,071	\$ 1,364,535	\$ 1,493,054	\$ 1,461,995	\$ 1,479,498	\$ 1,556,008	\$ 1,469,265	\$ 1,368,146

Cost Per Mile February 2010

Cost per mile:	Mar-09	Apr-09	May-09	Jun-09	Jul-09	Aug-09	Sep-09	Oct-09	Nov-09	Dec-09	Jan-10	Feb-10	Average
Blue Line	\$1.94	\$2.12	\$1.74	\$1.95	\$1.83	\$2.04	\$1.76	\$1.71	\$1.96	\$2.18	\$2.53	\$1.45	\$1.93
Red Line	\$1.35	\$1.38	\$1.46	\$1.49	\$1.37	\$1.75	\$1.12	\$1.71	\$1.15	\$1.42	\$1.13	\$1.48	\$1.40
Green Line	\$3.36	\$2.31	\$2.16	\$2.75	\$2.05	\$1.97	\$2.29	\$1.59	\$2.01	\$2.43	\$1.91	\$0.98	\$2.15
Gold Line	\$1.83	\$1.86	\$2.02	\$1.73	\$1.94	\$1.94	\$2.17	\$1.55	\$1.69	\$1.62	\$1.55	\$1.62	\$1.79



No facility costs are included

Absences vs. Overtime

February 2010

ABSENCE TYPE and HOURS	3940	3941	3942	3943	3944	Total
AWP-ABSENT W/O PERMISSION	0.00	8.00	0.00	0.00	0.00	8.00
BER-BEREAVEMENT	0.00	0.00	8.00	0.00	8.00	16.00
CTO-COMPENSATORY TIME OFF	8.00	191.78	107.12	84.00	88.00	478.90
CVA - CASUAL VACATION	8.00	0.00	515.52	0.00	16.00	539.52
DSL-DISABILITY LEAVE/LONG	0.00	280.00	182.00	0.00	160.00	622.00
EFH-EMG. FLOAT HOL.	0.00	8.00	40.00	8.00	0.00	56.00
ETO-EXCUSED TIME OFF	0.00	26.52	12.50	5.00	15.60	59.62
FML-FAMILY CARE LEAVE	0.00	602.34	258.00	83.68	16.00	960.02
HLF-HOLIDAY FLOATING	8.00	152.00	152.00	88.00	72.00	472.00
II-INDUSTRIAL INJURY	0.00	160.00	0.00	160.00	0.00	320.00
JUR-JURY DUTY	0.00	0.00	16.00	0.00	40.00	56.00
LC1-LABOR CODE 233	16.00	393.43	460.75	152.00	210.00	1,232.18
LTI-OCCPIL/LONGTRM INJ LEAVE	0.00	0.00	200.00	0.00	0.00	200.00
MLN-MILITARY ABSENCE-UNPAID	0.00	0.00	8.00	0.00	0.00	8.00
RTO-REQUESTED TIME OFF-NO PAY	0.00	0.00	16.00	0.00	0.00	16.00
SCK-SICK PAY	8.00	196.14	247.47	143.00	48.00	642.61
SCW-SICK WITHOUT PAY	0.00	7.58	148.00	0.00	0.00	155.58
SPN-SCHOOL PARTNER NOT PAID	0.00	0.00	8.00	0.98	0.00	8.98
SUP-TEMPORARY SUPERVISOR	0.00	269.50	209.88	216.00	207.46	902.84
VAC-VACATION	48.00	348.98	132.00	166.00	216.00	910.98
Total Absence Hours	96.00	2,644.27	2,721.24	1,106.66	1,097.06	7,665.23
Number of Work Force	22.00	108.00	108.00	48.00	49.00	335.00
Full Work Force hours/month	3,812.60	18,716.40	18,716.40	8,318.40	8,491.70	58,055.50
Absence as a % of Work Force	3%	14%	15%	13%	13%	13%
OVERTIME TYPE and HOURS	3940	3941	3942	3943	3944	Total
CTB-COMPENSATORY TIME TO BANK	8.00	110.63	28.50	24.00	20.00	191.13
OTP-PREM OVERTIME	165.00	687.20	481.28	425.75	789.17	2,548.40
WLO-Worked Lunch Overtime	0.00	21.00	77.50	29.50	33.50	161.50
Total	173.00	818.83	587.28	479.25	842.67	2,901.03
Overtime as a % of Work Force	5%	4%	3%	6%	10%	5%
UNCOVERED ABSENCES	3940	3941	3942	3943	3944	Total
Absences FTE	0.55	15.26	15.70	6.38	6.33	44.22
OTP FTE	1.00	4.72	3.39	2.76	4.86	16.74
FTE Difference	-0.44	10.53	12.31	3.62	1.47	27.49



Metro

1 FTE = 2080 Hours/Year or 173.3 Hours Per Month

Rail Fleet Services Instruction

February 2010

Training classes completed during the month of February 2010

Description	Status	Start	End	Course Hours	Student Count	Training Hours
Blue Line Training - LRV:						
OFFICE 2003 - PROGRAMS	Complete	2/5/2010	2/18/2010	21.5	1	21.5
MOP WORKPLACE VIOLENCE AND THREAT MANAGEMENT	Complete	2/10/2010	2/10/2010	4	1	4
FORKLIFT CERTIFICATION	Complete	2/17/2010	2/17/2010	2	2	4
BLOODBORNE PATHOGENS	Complete	2/10/2010	2/20/2010	2	2	4
Fire Safety (Video)	Complete	2/12/2010	2/12/2010	2	1	2
MOP SEXUAL HARASSMENT PREVENTION AND TITLE VII	Complete	2/16/2010	2/16/2010	2	1	2
ETD INTRODUCTION TO HUMAN RESOURCES POLICIES	Complete	2/4/2010	2/4/2010	3	1	3

Total Blue Line Training (Hours): 40.5

Red Line Training (Breda A650 HRV):

RFS BRED A 650 VEHICLE INTRO	Complete	1/25/2010	2/2/2010	8	1	8
RFS BRED A 650 MTO SYSTEMS	Complete	2/3/2010	2/5/2010	24	1	24
RFS BRED A 650 DOOR SYSTEMS	Complete	2/9/2010	2/23/2010	24	2	48
RFS BRED A 650 CAR BODY	Complete	2/12/2010	2/12/2010	8	1	8
RFS BRED A 650 TRUCKS	Complete	2/17/2010	2/19/2010	24	1	24
RFS BRED A 650 LIGHT & DEST SIGN	Complete	2/25/2010	2/25/2010	8	2	16
BLOODBORNE PATHOGENS	Complete	2/3/2010	2/24/2010	2	12	24
EFFECTIVE MEETINGS	Complete	2/24/2010	2/24/2010	3	1	3
ADULT CPR/AED	Complete	2/8/2010	2/8/2010	5	1	5
OFFICE 2003 - PROGRAMS	Complete	2/4/2010	2/26/2010	20	1	20

Total Red Line Training (Hours): 152

Green Line Training (P2550 & P2000 LRVs):

MOP WORKPLACE VIOLENCE AND THREAT MANAGEMENT	Complete	2/10/2010	2/10/2010	4	1	4
EFFECTIVE MEETINGS	Complete	2/24/2010	2/24/2010	3	1	3
ETD PEOPLE SKILLS	Complete	2/10/2010	2/10/2010	3	1	3
MOP EAP AS A SUPERVISORY TOOL	Complete	2/23/2010	2/23/2010	1.5	1	1.5
OFFICE 2003 - PROGRAMS	Complete	2/9/2010	2/26/2010	3	4	12

Total Green Line Training (Hours): 23.5

Gold Line Training (P2550 & P2000 LRVs):

TOOLBOX FIRE PROTECTION (601)	Complete	2/27/2010	2/27/2010	0.25	6	1.5
RAIL SYSTEM SAFETY	Complete	2/10/2010	2/10/2010	3	1	3
EFFECTIVE MEETINGS	Complete	2/24/2010	2/24/2010	3	1	3

Total Gold Line Training (Hours): 7.5

Total Rail Fleet Services Instruction for the month of February 2010 (Hours): 223.5

Core Vehicle Training Completed:

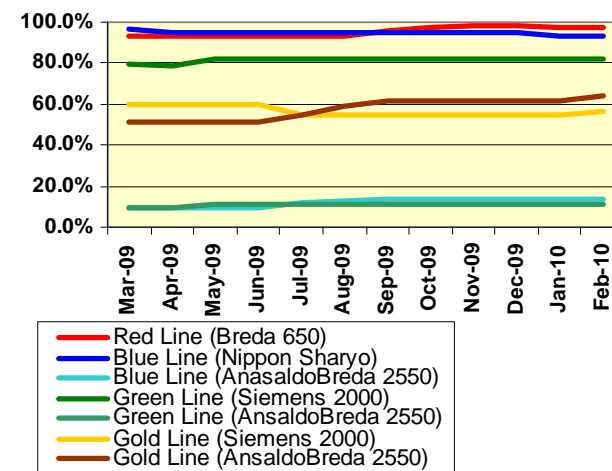
BLUE RED GREEN GOLD

Percentage of core vehicle training complete: 92.9% 97.5% 82.2% 56.8%

AnsaldoBreda 2550 Training Completed: 13.8% N/A 11.1% 64.2%

Average Specialist Rail Experience Level in Years: 10.4 10.3 7.3 8.5

Core Training Completed



Variations caused by new hires, employee transfers, & training completed