



Rail Fleet Services Monthly Report July 2010



Metro

Table of Contents

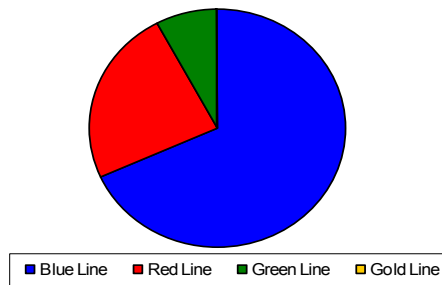
• Safety	
– Industrial Injuries	Page 1
– Rail Vehicle Accidents & Major Incidents	Page 2
• Customer Service	
– Service Delivery – AM/PM Pull-Outs	Page 3
– Vehicle Utilization – Blue Line & Green Line	Page 4
– Vehicle Utilization – Red Line & Gold Line	Page 5
– Mean Miles Between Failures (Major)	Page 6
– Repeat Failures (Major)	Page 7
• Business Processes	
– Reported Incidents	Page 8
– Preventative Maintenance Compliance	Page 9
• Finance	
– Vandalism & Graffiti Costs	Page 10
– Graffiti Pictures	Page 11
– Material & Labor Costs	Page 12
– Cost per mile	Page 13
– Absence vs. Overtime	Page 14
• Engineering	
– Rail Vehicle Engineering Project Summary	Page 15
– P2550 Vehicle Acceptance Program	Page 16
• Quality Assurance	
– Warranty Program Projects Summary	Page 17
• Growth	
– Rail Fleet Service Training	Page 18

Industrial Injuries – Lost Work Hours

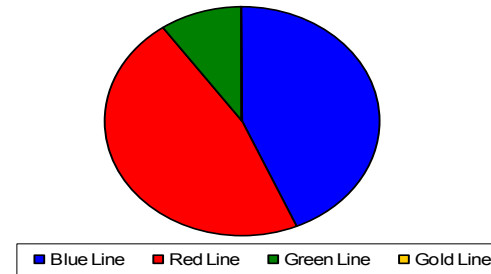
July 2010

	Aug-09	Sep-09	Oct-09	Nov-09	Dec-09	Jan-10	Feb-10	Mar-10	Apr-10	May-10	Jun-10	Jul-10	Year to Date
Blue Line	48	112	352	288	200	176	160	264	256	328	424	496	3,104
Red Line	456	328	344	356	352	352	200	176	176	280	168	176	3,364
Green Line	0	0	0	8	136	168	168	136	16	3	0	56	691
Gold Line	0	0	0	0	8	0	0	0	0	0	0	0	8
Totals	504	440	696	652	696	696	528	576	448	611	592	728	7,167

July 2010 - Lost Work Hours



Year-to-Date Lost Work Hours



	Employees		July 2010 Lost Work Hours			
	Assigned	Active	Service Attendant	Maint. Specialist	Body Repairer /Painter	July 2010 Total Hrs.
Blue Line	105	102	136	184	176	496
Red Line	105	101	176	0	0	176
Green Line	48	46	56	0	0	56
Gold Line	50	49	0	0	0	0
Totals	308	298	368	184	176	728
Total Lost Work Hours for 12-months = hours						

Rail Vehicle Accidents & Major Incidents

July 2010

Repair Costs	Aug-09	Sep-09	Oct-09	Nov-09	Dec-09	Jan-10	Feb-10	Mar-10	Apr-10	May-10	Jun-10	Jul-10	Totals
Blue Line	\$0	\$2,122	\$0	\$38,396	\$656	\$39,034	\$5,600	\$11,305	\$2,100	\$5,705	\$2,050	\$36,498	\$143,466
Red Line	\$0	\$0	\$0	\$0	\$0	\$0	\$0	\$0	\$0	\$0	\$0	\$0	\$0
Green Line	\$0	\$0	\$0	\$0	\$0	\$0	\$0	\$0	\$0	\$4,799	\$0	\$0	\$4,799
Gold Line	\$0	\$14,310	\$0	\$3,538	\$0	\$17,028	\$4,404	\$0	\$0	\$3,523	\$0	\$653	\$43,456
Totals	\$0	\$16,432	\$0	\$41,934	\$656	\$56,062	\$10,004	\$11,305	\$2,100	\$14,027	\$2,050	\$37,151	\$191,721

Rail Vehicle Accident Costs - July 2010				
Metro Blue Main Line				
2010	Incident #	Problem code	Incident Description	Cost
07/03/10	1698272	(10-73) Train vs. Vehicle	Train vs. Auto	\$5,576.00
				\$5,576.00
2010	Incident #	Problem code	Incident Description	Cost
07/30/10	1734053	(10-73) Train vs. Vehicle	Train vs. Metro Bus #7639 at Washington and Broadway., T-220, Train 8, LRV (161A) 166 131, Track 2, SB.	\$30,922.00
				\$36,498.00
Metro Gold Main Line				
2010	Incident #	Problem code	Incident Description	Cost
07/02/10	1693095	(10-73) Train vs. Vehicle	Traffic collision at Temple and Alameda, Train No. 08, T-87, Vehicle # 715 (Lead).	\$386.00
				\$386.00
2010	Incident #	Problem code	Incident Description	Cost
07/30/10	1734314	(10-73) Train vs. Vehicle	Minor collision between train and vehicle southbound at 3rd and La Verne. Train #7, T-106, track 2, (249B)-235.	\$267.00
				\$653.00
Metro Red Main Line				
2010	Incident #	Problem code	Incident Description	Cost
07/27/10	1730013	(10-72) Train vs. Pedestrian	Passenger extended arm from the platform and it was struck by Train #53 westbound at Wilshire and Vermont, lower level platform.	\$0.00
				\$0.00
				\$37,151.00
0-71) = Train vs. Object, (10-72) = Train vs. Pedestrian, (10-73) = Train vs. Vehicle (10-74) = Train vs. MTA Vehicle, (10-75) = Derailme				

Service Delivery – AM/PM Pull-Outs July 2010

Cars Available for AM/PM Pull-Outs

Blue Line – Fleet Size 69 cars

- Weekday pull-out: 60 cars
- Weekend pull-out: 36 cars
- **Monthly Mileage: 412,597 miles**

Red Line - Fleet Size 104 cars

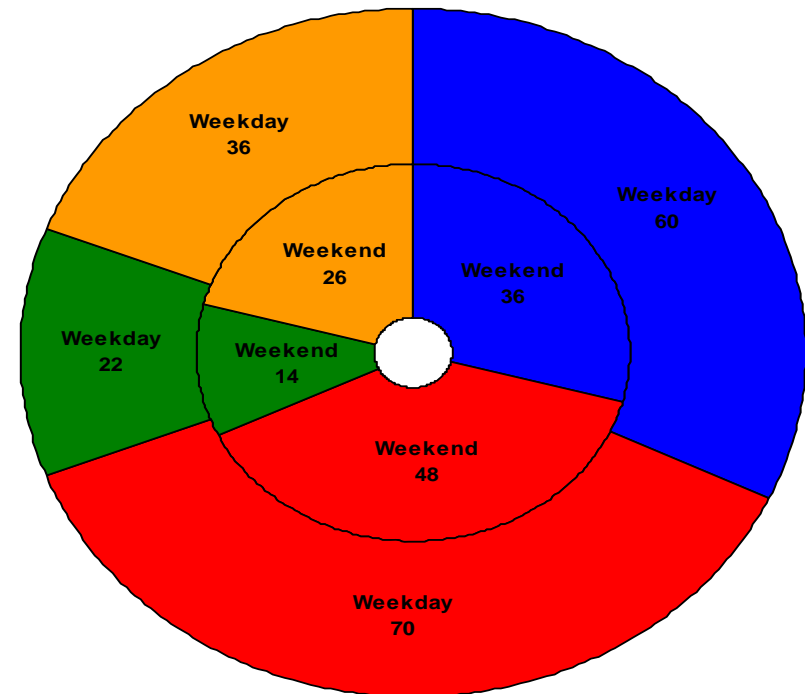
- Weekday pull-out: 70 cars
- Weekend pull-out: 48 cars
- **Monthly Mileage: 547,020 miles**

Green Line – Fleet Size 29 cars

- Weekday pull-out: 22 cars
- Weekend pull-out: 14 cars
- **Monthly Mileage: 220,666 miles**

Gold Line – Fleet Size 52 cars

- Weekday pull-out: 36 cars
- Weekend pull-out: 26 cars
- **Monthly Mileage: 223,144 miles**



■ Blue Line ■ Red Line ■ Green Line ■ Gold Line

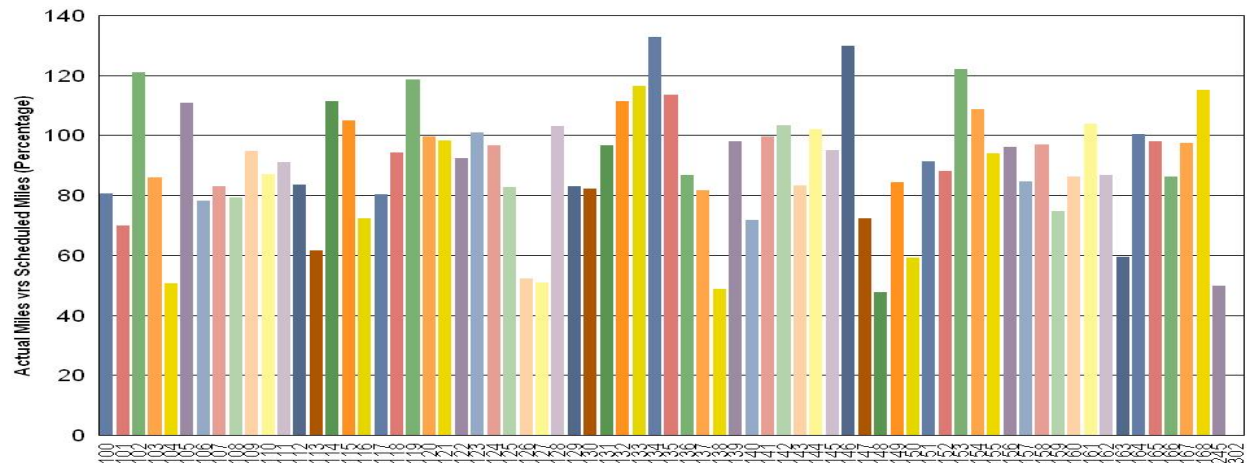
Vehicle Utilization July 2010

Blue Line – Car 302 is considered part of the new EXPO fleet. The current vehicle is out of service while undergoing a paint/body refurbishment program. Car 302 is not considered part of revenue fleet and will be removed.

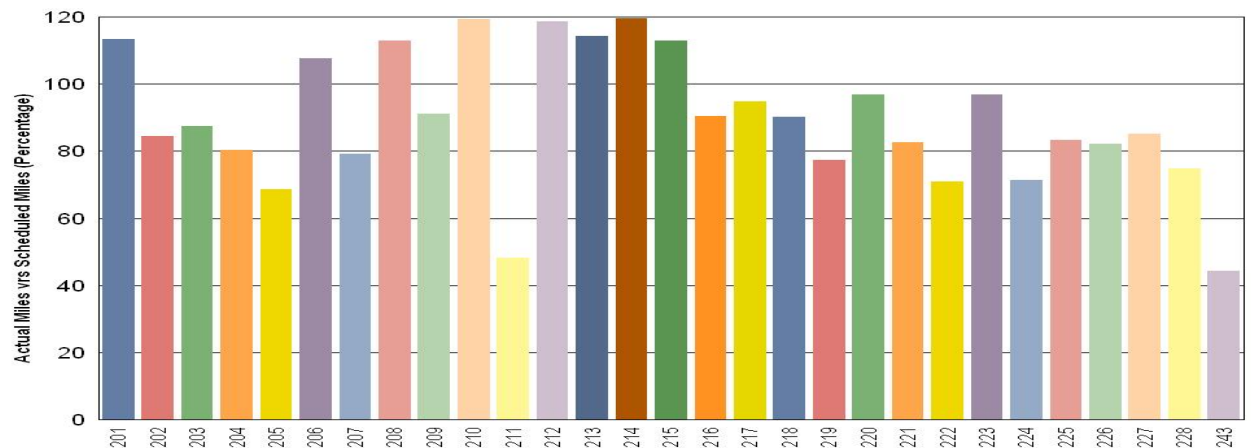
Note: Percentage includes an average 4% mileage deduction for Yard mileage and Vehicle Testing.

Green Line – The fleet has met the daily maximum utilization requirement for the month of July.

Metro Blue Line



Metro Green Line

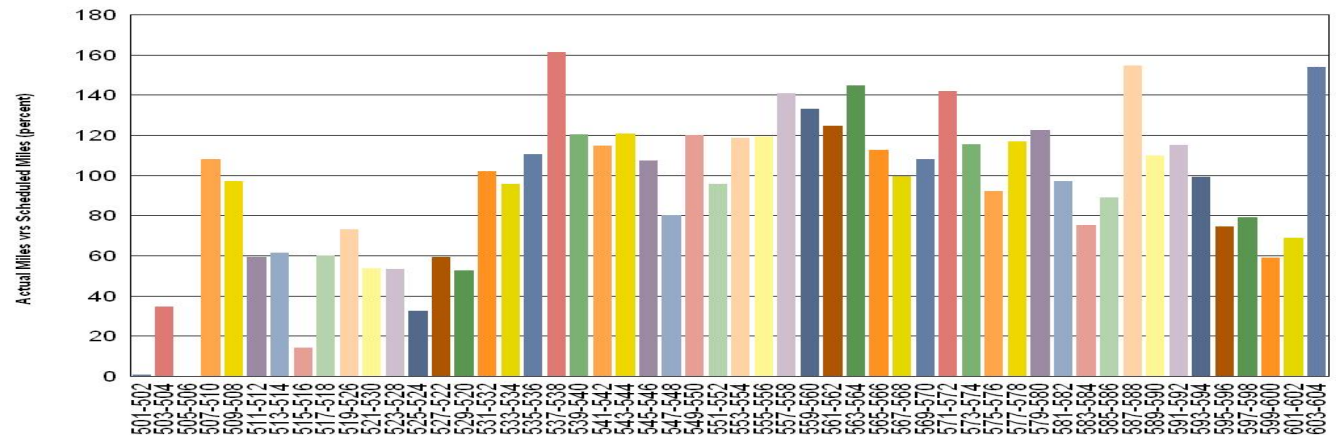


Vehicle Utilization July 2010

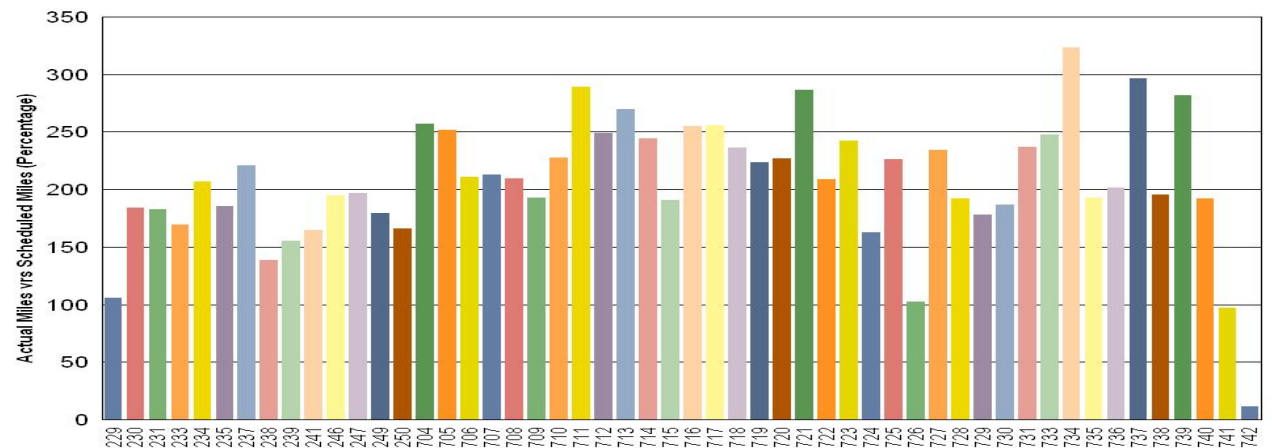
Red Line – Vehicles #501-2, 503-4, 505-6, & 527/522. The low vehicle utilization is due to various system failures. They are: blower motor, propulsion, brakes and car floor.

Percentage includes an average 4% mileage deduction for Yard mileage and Vehicle Testing.

Metro Red Line



Metro Gold Line



Mean Miles Between Failures (Major) July 2010

Miles Between Major Failures

Blue Line: 24,270 miles (17 Major Failures)

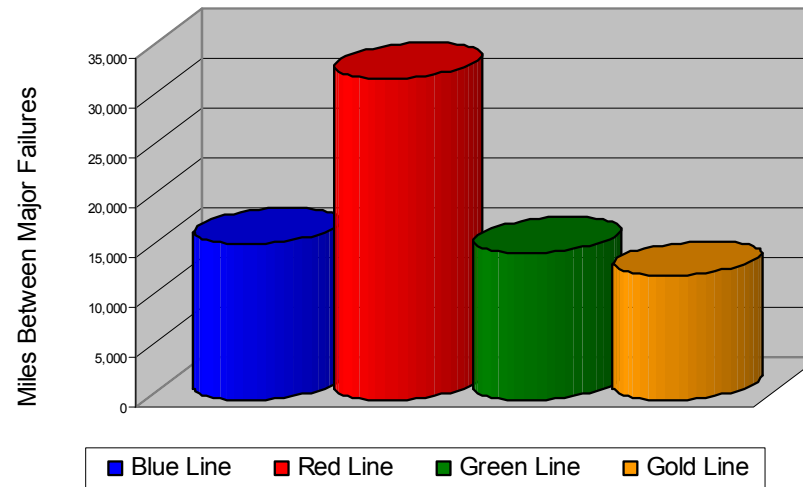
Red Line: 32,178 miles (17 Major Failures)

Green Line: 15,762 miles (14 Major Failures)

Gold Line: 12,397 miles (18 Major Failures)

Siemens P2000 7,204 miles (7 Major Failures)

AnsaldoBreda P2550 15,702 miles (11 Major Failures)



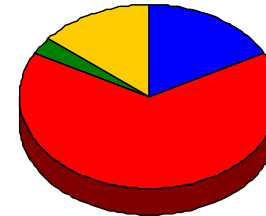
Repeat Failures (Major) July 2010

Metro Blue Line: 6 Repeat Failures

Metro Red Line: 23 Repeat Failures

Metro Green Line: 1 Repeat Failures

Metro Gold Line: 5 Repeat Failures



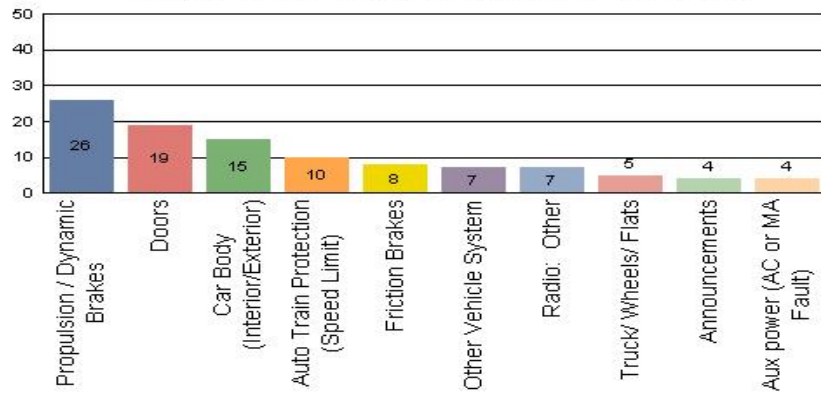
■ Blue Line ■ Red Line ■ Green Line ■ Gold Line

Repeater Car Details - July 2010								
System	Blue Line		Red Line		Green Line		Gold Line	
	Car #	Repeats	Car #	Repeats	Car #	Repeats	Car #	Repeats
Automated Train Operation			549	1				
			567	1				
			577	2				
Automated Train Protection					205	1	234	1
							706	2
Auxiliary Power			526	1				
Communication			513	2				
			528	2				
Doors	122	1					740	2
	144	1						
	158	1						
	136	2	508	1				
Friction Brakes			593	3				
HVAC			515	2				
			581	2				
	162	1	512	2				
Propulsion/Dynamic Brake			517	1				
			559	2				
			584	1				
TOTALS	6		23		1		5	

Reported Incidents July 2010

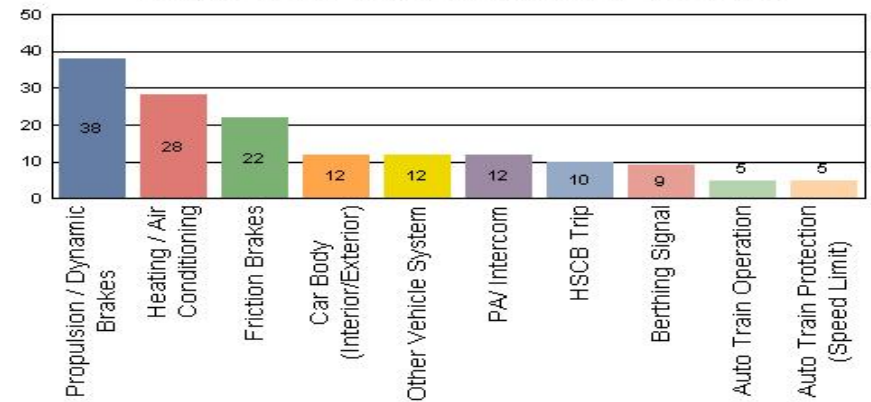
Metro Blue Line

Count of the Top 10 Incident Problems



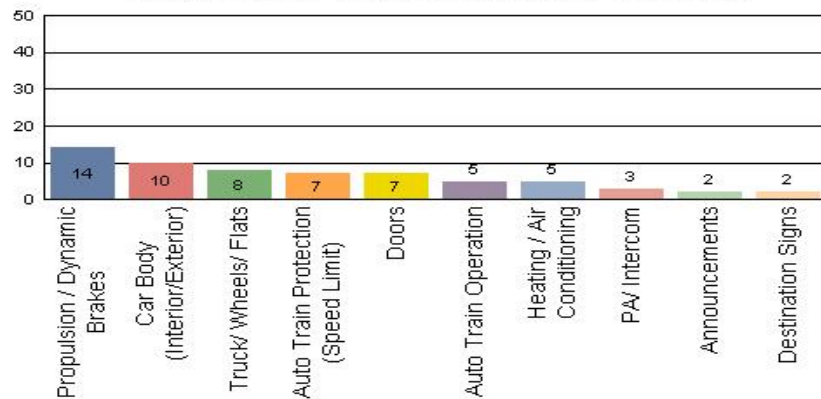
Metro Red Line

Count of the Top 10 Incident Problems



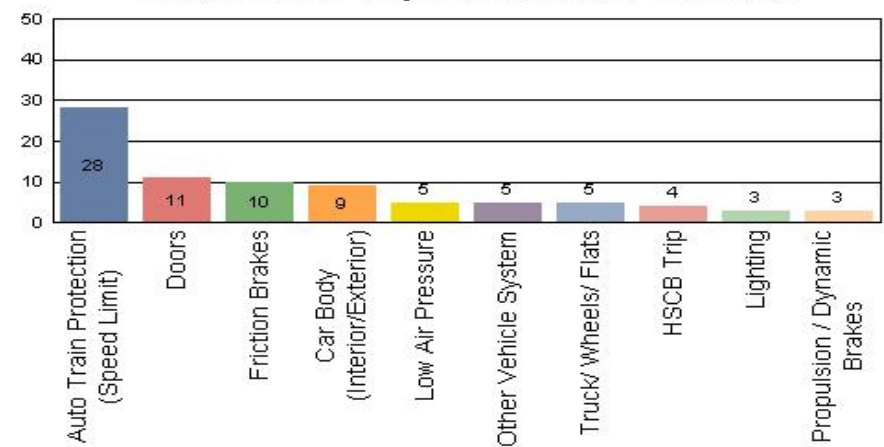
Metro Green Line

Count of the Top 10 Incident Problems



Metro Gold Line

Count of the Top 10 Incident Problems

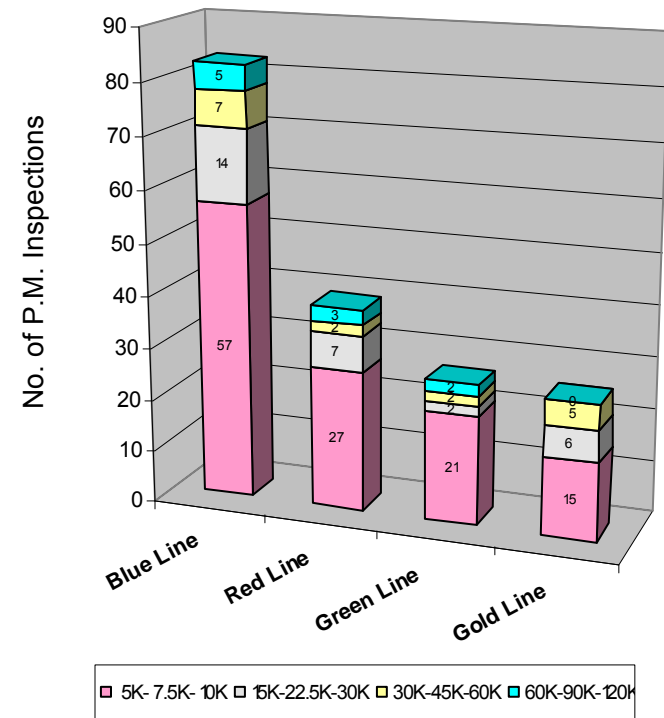


Preventative Maintenance Compliance July 2010

Averages	Jul-09	Aug-09	Sep-09	Oct-09	Nov-09	Dec-09	Jan-10	Feb-10	Mar-10	Apr-10	May-10	Jun-10	Jul-10
Blue Line	100%	100%	100%	100%	100%	100%	100%	100%	100%	100%	100%	100%	100%
Red Line	94%	100%	100%	100%	100%	100%	100%	100%	100%	100%	100%	100%	100%
Green Line	100%	100%	100%	100%	100%	100%	100%	100%	100%	100%	100%	100%	100%
Gold Line	100%	100%	100%	100%	100%	100%	100%	100%	100%	100%	100%	100%	100%

July 2010 Preventative Maintenance Inspections

No. of P.M. Inspections	5K-7.5K-10K	15K-22.5K-30K	30K-45K-60K	60K-90K-120K	Totals	Percent Compliance
Blue Line	57	14	7	5	83	100%
Red Line	27	7	2	3	39	100%
Green Line	21	2	2	2	27	100%
Gold Line	15	6	5	0	26	100%
Totals:	120	29	16	10	175	100%

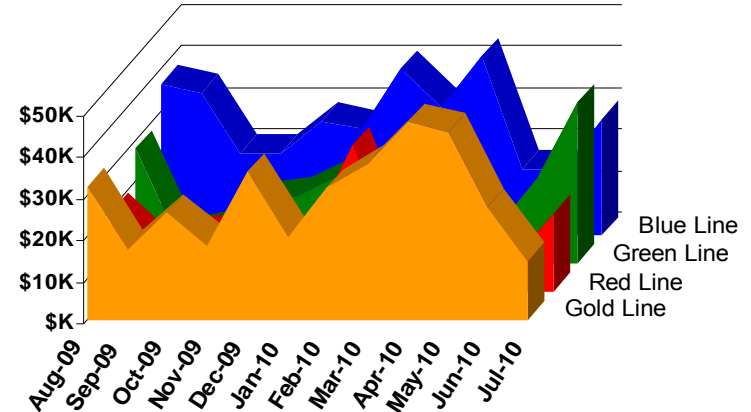


Vandalism & Graffiti Report

July 2010

	Aug-09	Sep-09	Oct-09	Nov-09	Dec-09	Jan-10	Feb-10	Mar-10	Apr-10	May-10	Jun-10	Jul-10	Year-to-Date
Blue Line	\$36,475	\$34,318	\$19,686	\$19,757	\$27,409	\$25,519	\$40,085	\$30,557	\$42,951	\$15,825	\$15,888	\$27,868	\$336,338
Green Line	\$27,501	\$6,774	\$8,355	\$14,915	\$16,393	\$20,985	\$35,216	\$20,933	\$7,585	\$8,615	\$20,555	\$38,750	\$226,577
Red Line	\$19,237	\$10,375	\$13,684	\$14,334	\$11,227	\$15,838	\$13,809	\$11,162	\$12,115	\$11,001	\$7,715	\$18,777	\$159,274
Gold Line	\$32,051	\$17,062	\$25,750	\$17,992	\$35,479	\$19,892	\$31,808	\$37,462	\$47,526	\$45,114	\$27,086	\$14,117	\$351,339
Totals	\$115,264	\$68,529	\$67,475	\$66,998	\$90,508	\$82,234	\$120,918	\$100,114	\$110,177	\$80,555	\$71,244	\$99,512	\$1,073,528

July 2010 Vandalism & Graffiti - All Rail				
	Qty	Labor	Materials	Totals
Windows replaced	20	\$3,465	\$2,883	\$ 6,348
Vandal Shields	500	\$12,443	\$6,843	\$ 19,285
Seats Cleaned	1,636	\$4,036	\$0	\$ 4,036
Seats Replaced	168	\$5,292	\$6,711	\$ 12,003
Ext/Int Repairs	502	\$34,322	\$5,831	\$ 40,153
Totals for July 2010		\$76,064	\$23,448	\$ 99,512



Graffiti Pictures

July 2010



A - Metro Blue Line



B - Metro Green Line



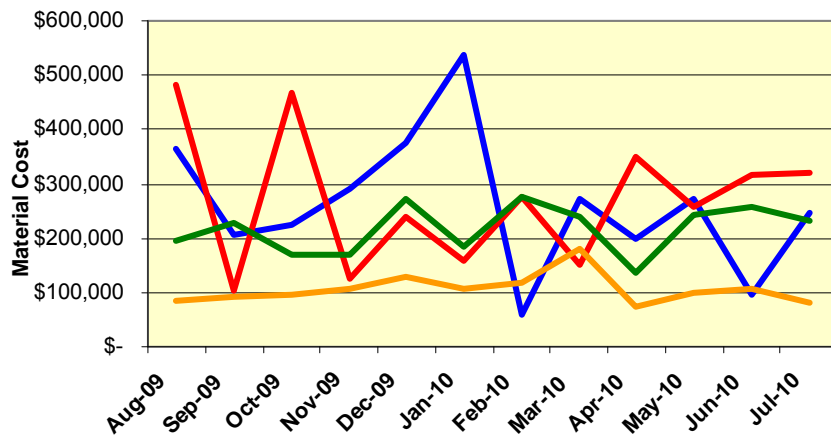
C - Metro Gold Line

Material and Labor Costs

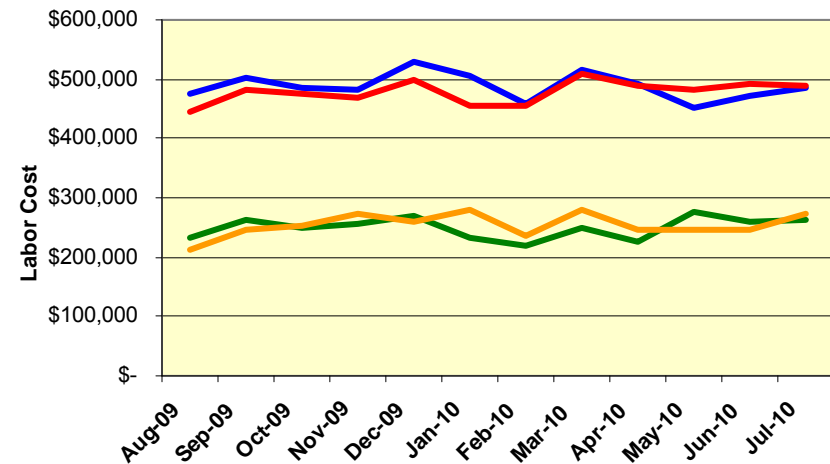
July 2010

MATERIALS	Aug-09	Sep-09	Oct-09	Nov-09	Dec-09	Jan-10	Feb-10	Mar-10	Apr-10	May-10	Jun-10	Jul-10	Totals
Blue Line	\$ 363,633	\$ 207,364	\$ 225,796	\$ 290,113	\$ 375,541	\$ 535,717	\$ 57,633	\$ 270,743	\$ 197,253	\$ 272,347	\$ 94,924	\$ 245,000	\$ 3,136,064
Red Line	\$ 483,111	\$ 103,550	\$ 466,761	\$ 123,484	\$ 238,738	\$ 157,351	\$ 275,856	\$ 149,720	\$ 348,088	\$ 258,558	\$ 317,139	\$ 321,375	\$ 3,243,732
Green Line	\$ 194,727	\$ 229,080	\$ 169,738	\$ 168,715	\$ 272,871	\$ 184,149	\$ 276,116	\$ 240,194	\$ 136,768	\$ 244,408	\$ 256,000	\$ 231,296	\$ 2,604,062
Gold Line	\$ 84,679	\$ 93,780	\$ 96,151	\$ 106,126	\$ 128,297	\$ 105,109	\$ 117,356	\$ 179,658	\$ 72,343	\$ 98,102	\$ 105,801	\$ 81,897	\$ 1,269,300
Totals	\$ 1,126,150	\$ 633,774	\$ 958,446	\$ 688,438	\$ 1,015,447	\$ 982,326	\$ 726,961	\$ 840,315	\$ 754,453	\$ 873,415	\$ 773,864	\$ 879,567	\$ 8,599,726

Material Costs



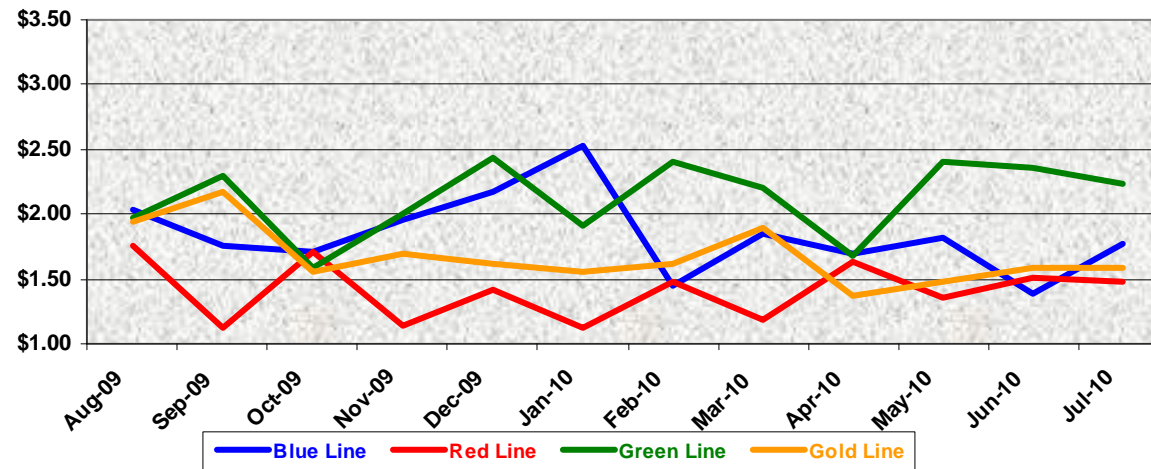
Labor Costs



LABOR	Aug-09	Sep-09	Oct-09	Nov-09	Dec-09	Jan-10	Feb-10	Mar-10	Apr-10	May-10	Jun-10	Jul-10
Blue Line	\$ 475,663	\$ 501,060	\$ 487,020	\$ 483,394	\$ 527,760	\$ 505,239	\$ 458,335	\$ 515,305	\$ 492,862	\$ 451,979	\$ 472,293	\$ 484,536
Red Line	\$ 444,523	\$ 481,469	\$ 474,751	\$ 468,331	\$ 498,786	\$ 453,571	\$ 453,580	\$ 510,664	\$ 487,627	\$ 482,974	\$ 492,936	\$ 487,742
Green Line	\$ 231,555	\$ 263,718	\$ 248,915	\$ 256,078	\$ 269,668	\$ 231,918	\$ 218,637	\$ 248,224	\$ 225,004	\$ 276,665	\$ 258,297	\$ 262,563
Gold Line	\$ 212,794	\$ 246,807	\$ 251,309	\$ 271,694	\$ 259,793	\$ 278,537	\$ 237,594	\$ 279,935	\$ 247,135	\$ 247,474	\$ 247,000	\$ 271,885
Totals	\$ 1,364,535	\$ 1,493,054	\$ 1,461,995	\$ 1,479,498	\$ 1,556,008	\$ 1,469,265	\$ 1,368,146	\$ 1,554,128	\$ 1,452,628	\$ 1,459,092	\$ 1,470,526	\$ 1,506,727

Cost Per Mile July 2010

Cost per mile:	Aug-09	Sep-09	Oct-09	Nov-09	Dec-09	Jan-10	Feb-10	Mar-10	Apr-10	May-10	Jun-10	Jul-10	Average
Blue Line	\$2.04	\$1.76	\$1.71	\$1.96	\$2.18	\$2.53	\$1.45	\$1.85	\$1.69	\$1.82	\$1.39	\$1.77	\$1.85
Red Line	\$1.75	\$1.12	\$1.71	\$1.15	\$1.42	\$1.13	\$1.48	\$1.19	\$1.64	\$1.36	\$1.51	\$1.48	\$1.41
Green Line	\$1.97	\$2.29	\$1.59	\$2.01	\$2.43	\$1.91	\$2.41	\$2.20	\$1.67	\$2.41	\$2.36	\$2.24	\$2.12
Gold Line	\$1.94	\$2.17	\$1.55	\$1.69	\$1.62	\$1.55	\$1.62	\$1.89	\$1.37	\$1.49	\$1.59	\$1.59	\$1.67



No facility costs are included

Absences vs. Overtime

July 2010

ABSENCE TYPE and HOURS	3940	3941	3942	3943	3944	Total
BER-BEREAVEMENT		40.00	40.00			80.00
CTO-COMPENSATORY TIME OFF		17.50	16.00	8.00	37.00	78.50
CVA - CASUAL VACATION			1,304.00	16.00	212.00	1,532.00
DRN-DR. APPOINTMENT 48 HR N				4.00		4.00
DSL-DISABILITY LEAVE/LONG		288.00	144.00			432.00
EFH-EMG. FLOAT HOL.		40.00	160.00	32.00	56.00	288.00
ETO-EXCUSED TIME OFF		23.00	11.00	4.00	22.89	60.89
FML-FAMILY CARE LEAVE		80.00	444.00	195.50	208.00	927.50
HLF-HOLIDAY FLOATING	32.00	576.00	396.00	200.00	248.00	1,452.00
HNP-HOLIDAY NOT PAID			40.00	16.00		56.00
HOL-HOLIDAY LEGAL	8.00	496.00	472.00	112.00	112.00	1,200.00
II-INDUSTRIAL INJURY		496.00		56.00		552.00
LC1-LABOR CODE 233		36.95	149.50	54.37	22.75	263.57
LTI-OCCPIL/LONGTRM INJ LEAVE			176.00			176.00
MLN-MILITARY ABSENCE-UNPAID			16.00	8.00		24.00
SCK-SICK PAY		136.00	216.52	56.00	24.00	432.52
SCW-SICK WITHOUT PAY		80.00	32.00	184.00	16.00	312.00
SUP-TEMPORARY SUPERVISOR		319.50	310.50	211.42	152.00	993.42
VAC-VACATION	100.00	1,332.22	278.80	628.00	508.00	2,847.02
Total Absence Hours	140.00	3,961.17	4,206.32	1,785.29	1,618.64	11,711.42
Number of Work Force (assigned)	17.00	105.00	105.00	48.00	50.00	325.00
Full Work Force hours/month	2,946.10	18,196.50	18,196.50	8,318.40	8,665.00	56,322.50
Absence as a % of Work Force	5%	22%	23%	21%	19%	21%
OVERTIME TYPE and HOURS	3940	3941	3942	3943	3944	Total
CTB-COMPENSATORY TIME TO BANK	8.00	301.78	418.01	214.49	131.67	1,073.95
OTP-PREM OVERTIME	228.00	720.01	856.42	867.25	821.57	3,493.25
WLO-Worked Lunch Overtime	0.00	22.00	105.00	40.50	49.50	217.00
Total	236.00	1,043.79	1,379.43	1,122.24	1,002.74	4,784.20
Overtime as a % of Work Force	8%	6%	8%	13%	12%	8%
UNCOVERED ABSENCES	3940	3941	3942	3943	3944	Total
Absences FTE	0.81	22.85	24.27	10.30	9.34	67.57
OTP FTE	1.36	6.02	7.96	6.47	5.79	27.60
FTE Difference	-0.55	16.83	16.31	3.83	3.55	39.97

Rail Vehicle Engineering Project Summary

July 2010

Program	Major Projects
A650 Refurbishment:	Specification 75% complete (RFS Engineering and LTK finalizing).
Expo Readiness P865 Fleet:	Destination sign specification under review.
	Lower Amtrak horn modification Replace electronic gong with Quacker Horn Reprogram automated announcement center with Expo stations.
	Conversion of GRS TWC to H&K TWC No acceleration during ATP Overspeed Certification of GRS ATP use on Expo Line.
Expo Readiness P2000 Fleet:	Destination signs & announcements for Expo Stations - Marketing to provide recordings.
	Add TWC route select feature (testing new EPROM and faceplate).
	No power Acceleration during an ATP Overspeed.
	Certification GE ATP Usage on Blue and Expo Lines.
P2000 Signal Package Conversion:	On hold until further notice.
Protran Worker Protection Device:	Brackets designed, parts list and manufacturer located for P2000 fleet.
P2000 Component Overhaul:	Master controller Traction motor LED destination sign (all in process) Gearbox overhaul specification (in process).
P2550 Vehicle Acceptance:	Reported on separate page.
Technical Specifications	
MBL, MGL, MRL, MGD	P2000/TS/006 Rev. 01 – Bombardier to assemble 4 gearboxes (under review).
(all fleets):	P2000/TS/030 Rev. 00 – Repair/Overhaul Gearbox (specification in process).
	P2000/TS/011 Rev. 01 – Axle assembly (specification in process to include out of scope charges).
	P865/P2020/TS/037 Rev. 01 – Axle assembly (specification in process to include out of scope charges).
Active Test Bulletins	
MBL (P865/P2020):	NPR during overspeed Inspection interval investigation (5K-7.5K) Door open relay PHSCB Solid state relay Replace GRS/TWC with H&K TWC.
MRL (A650 Base):	Chevron springs DC-AC traction motor blower GE gear unit.
MRL (A650 Option):	Pinion shaft Emergency door seal Gearbox Air spring Vandal shield Rubber boots (retest) Brushes Motor evaporator.
Active Modification Bulletins	
MBL (P865/P2020):	Watch gap Wheelchair Security cameras Battery disconnect decals Gearbox long breather tube AHSCB reset circuit Window sash
MRL (A650 Option/Base):	FCC high voltage decal Remove trip switch wiring Manual controller modification by American Transit Front door latch Replace end door threshold plate Dead battery start Buss bar isolation ATO overspeed brake rate
MGL (P2000):	Master controller with new cam profiles Removal of convex mirror head Spin/slide sanding modification.
MGDL (P2000):	Battery disconnect decals.
Active Technical Request Form	
MBL (P865/P2020):	Destination signs Journal bearing Air compressor motor Chopper intake Damper assembly Knorr washer Motor alternator set CB1 tripping problem.
MRL (A650 Option/Base):	ATO berthing Flender gearbox Pinion shaft Coupler corrosion cover Gate drive power supply Location decal Rectifier Door latching relay Twist lug connector Thermistor & TLR circuit failures PA system & air whistle/horn faults Safety Cable Hand Assistance Strap Contact Adhesive Flooring H-4 Glass.
MGL (P2000):	Door operator assemble repair vendor Sanding system Air vent grille Exterior rear view mirror Sun shade gear latch Car 201 technical assistance EMI trip faults.

P2550 Vehicle Acceptance Program

July 2010

Vehicle Status Update:

- 41 cars at Metro
- 39 cars at MGD
- 2 cars at MBL
- A total of 38 Cars Conditionally Accepted (CA)
 - 1 car in burn-in (743)
- 1 car accepted in July.
- 9 Cars at Pittsburg Assembly Plant

Engineering Activities Update:

- Event Recorder – AB tested (3) software versions to qualify the system; the ATP communications requires further debugging. The work is ongoing.
- ATP “250 Hz filter” faults reported to the ATP system. Software release 2.03 installed on the fleet that removes nuisance faults. AB has sent defective 250 Hz board to the factory to determine if frequency drift problem. The work is ongoing.
- Traction Motor HV Junction Box – Twenty (20) pieces have been manufactured to date and shipped anticipated arrival to LA is mid-August.
- Brake Overhaul – Two complete car sets have been shipped to Knorr facilities for overhaul. An exchange program and schedule is being developed. The work is ongoing.

Production Car Status – Pittsburg:

- Car 744 - 95% complete, final inspection in process.
- Car 745 - 75% complete, electrical testing in process.
- Car 746 - 50% complete, assembly in process.
- Cars 747, 748, 749, 750 - 20 to 50% complete, assembly in process.
- Car 702 - All interior, undercar and wiring removed. Trucks 90% complete.
- Car 701 – Assembly in process, trucks to be modified in Pittsburg.

Project Management:

- Contract spares are being process and delivered to Metro.
- PMO/FTA requested plan to accept 10 cars. Plan and schedule submitted with 10th car final acceptance March 2011.
- Daily and weekly meetings with AB Project Management to solve revenue service issues.

QA-Warranty Program Projects Summary

July 2010

ADMINISTRATION	
<ul style="list-style-type: none"> • QA PMI Audits Program - QA has conducted 4 PMI audits at Divisions 11, 20, 21 and 22. Performance evaluation grades have been forwarded to upper level management. • The Inspector General's Office continues its investigation of RFS past PMI performances. QA has forwarded latest audit reports of measurable improvements and stellar workmanship. • P2550 Contract Programs: RDT evaluation, Fleet C/A inspection, Bar Cod implementation, IPC review & ABI deliverables. • P2550 Projects: Warranty review issues, Spare Parts QA acceptance and testing. (9 cars remain to be inspected) • Special Projects & Technical Assist Programs, RWES' continue to assist both Engineering & Maintenance in providing corrective action in vehicle problem areas. • Program Audits, Parts Processing, Cost Avoidance Recovery Data, Video Surveillance Archives, Safety, Accident / Incident Files, & Warranty Processing information. QA-Warranty Share Drive contains all pertinent data. 	
ERS ACTIVITIES	
<ul style="list-style-type: none"> • The ERS' are implementing respective division equipment records into Spears M3 System. • All archived QA documentation & files are available for management inquiry. • The Video Surveillance records, Incident & Accident Reports are well maintained and Risk Mgmt is well pleased with integrity and efficiency of receiving documentation. • The warranty & cost avoidance records are maintained and up to date. • Administrative support for Maintenance continues. 	
RED LINE ACTIVITIES	
<ul style="list-style-type: none"> • T/M Mounts & Truck Frames continue, ABI weld repair project oversight being observed QA/Warranty. • Conducted 90 K PMI Audit Cars 589/590. • Performed FAI's on Ground Brushes, Line Breakers & other Electronic Components. • Special Project support e.g. Compressor Motors, T/M Bearings, Inverters, Oscillators & Coupler Cables, • Process 30 Warranty Parts, 48 R&R Parts, cost avoidance savings labor & parts = \$40,760 	
BLUE LINE ACTIVITIES	
<ul style="list-style-type: none"> • Performed PMI Audits & Inspections. • Engineering Technical Support Cobra Brakes testing, Expo Line TWC Modification, resolving car system issues. • Oversee equipment overhaul campaigns. (Door Systems, Car Body, Lighting Systems, & Car interior Projects) • Tech assist, draft Technical Procedures for RFSTS, also generate equipment Power-Point-Presentations. 	
GREEN LINE ACTIVITIES	
<ul style="list-style-type: none"> • Support Engineering with resolving open issues on Circuit Relay, Car 243, and operator mirror. • Continue close support with Overhaul vendors & Contractors. (Doors, Traction Motors, Gearboxes & Brake Systems) • Process 29 R&Rs. • Conduct PMI Audits car 223 and car 218. • Perform FAI on Swiger Motors. • Draft Technical Reports & QA Power-Point-Presentations. 	
GOLD LINE ACTIVITIES	
<ul style="list-style-type: none"> • P2550, oversee PAAT Acceptance Program. • Travel to Pittsburg Assembly Plant to oversee car assembly and help resolve open issues. • Maintain P2550 project documentation, contract deliverables & maintenance records. • Process R&R & Warranty Parts. • Conduct FAI & parts inspections. • Support ABI & RFSTS Engineering with Car Acceptance test issues. 	

Rail Fleet Services Instruction

July 2010

Training classes completed during the month of July 2010

Description	Status	Start	End	Course Hours	Student Count	Training Hours
Blue Line Training - (865/2020 & P2000 LRV):						
ETD COMMUNICATING ONE-ON-ONE	Complete	7/14/2010	7/14/2010	3	1	3
BLOODBORNE PATHOGENS	Complete	7/11/2010	7/14/2010	2	3	6
RFS SIEMENS 2000 US&S ATP/ATO/TWC	Complete	7/13/2010	7/16/2010	40	6	240
RFS SIEMENS 2000 PROPULSION	Complete	7/1/2010	7/8/2010	80	6	480
EXCEL - 2003 BEGINNER	Complete	7/27/2010	7/27/2010	6	1	6
INCIDENT COMMAND SYSTEM (ICS - 300)	Complete	7/13/2010	7/16/2010	16	1	16
ETD PC 101 ESSENTIAL CONCEPTS	Complete	7/22/2010	7/22/2010	3	1	3
ANGER MANAGEMENT	Complete	7/21/2010	7/21/2010	3	1	3

Total Blue Line Training (Hours): 757

Red Line Training (Breda A650 HRV):

WAYSIDE WORKER PROTECTION	Complete	7/7/2010	7/14/2010	4	20	80
RAIL SYSTEM SAFETY	Complete	7/6/2010	7/6/2010	3	4	12
ANGER MANAGEMENT	Complete	7/21/2010	7/21/2010	3	2	6
PRE-SUPERVISORY TRAINING	Complete	7/7/2010	7/28/2010	14	2	28
P-CARD TRAINING FOR CARD HOLDERS & AOS	Complete	7/20/2010	7/20/2010	2	2	4
UNIVERSITY OF LA VERNE INFORMATION SESSION	Complete	7/20/2010	7/20/2010	1.5	1	1.5
TRANSIT TERRORISM AWARENESS TRAINING	Complete	7/13/2010	7/13/2010	1	1	1

Total Red Line Training (Hours): 132.5

Green Line Training (P2000 LRVs):

RFS SIEMENS 2000 US&S ATP/ATO/TWC	Complete	7/13/2010	7/16/2010	40	2	80
RFS SIEMENS 2000 PROPULSION	Complete	7/1/2010	7/8/2010	80	2	160
MOP WORKPLACE VIOLENCE AND THREAT MANAGEMENT	Complete	7/27/2010	7/27/2010	4	1	4
ADULT CPR/AED	Complete	7/7/2010	7/7/2010	5	5	25
P-CARD TRAINING FOR CARD HOLDERS & AOS	Complete	7/20/2010	7/20/2010	2	1	2
BLOODBORNE PATHOGENS	Complete	7/16/2010	7/16/2010	2	1	2
UNIVERSITY OF LA VERNE INFORMATION SESSION	Complete	7/20/2010	7/20/2010	1.5	1	1.5

Total Green Line Training (Hours): 274.5

Gold Line Training (P2550 LRVs):

WAYSIDE WORKER PROTECTION	Complete	7/14/2010	7/14/2010	4	2	8
	Complete					0
	Complete					0

Total Gold Line Training (Hours): 8

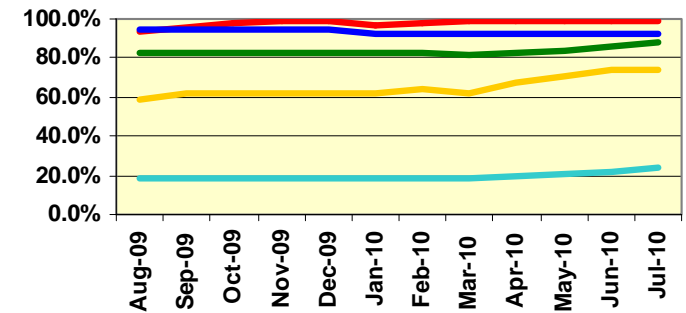
Total Rail Fleet Services Instruction for the month of July 2010 (Hours): 1,172.0

Core Vehicle Training Completed: BLUE RED GREEN GOLD

Percentage of core vehicle training complete: 92.9% 99.1% 87.9% 73.4%
Siemens 2000 training complete: 24.1% N/A N/A N/A

Average Specialist Rail Experience Level in Years: 10.8 10.7 7.7 8.9

Core Training Completed



Variations caused by new hires, employee transfers, & training completed