



# **Rail Fleet Services Monthly Report June 2010**



**Metro**

# Table of Contents

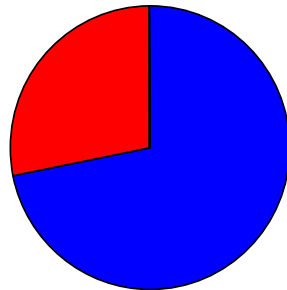
• Safety	
– Industrial Injuries	Page 1
– Rail Vehicle Accidents & Major Incidents	Page 2
• Customer Service	
– Service Delivery – AM/PM Pull-Outs	Page 3
– Vehicle Utilization – Blue Line & Green Line	Page 4
– Vehicle Utilization – Red Line & Gold Line	Page 5
– Mean Miles Between Failures (Major)	Page 6
– Repeat Failures (Major)	Page 7
• Business Processes	
– Reported Incidents	Page 8
– Preventative Maintenance Compliance	Page 9
• Finance	
– Vandalism & Graffiti Costs	Page 10
– Graffiti Pictures	Page 11
– Material & Labor Costs	Page 12
– Cost per mile	Page 13
– Absence vs. Overtime	Page 14
• Engineering	
– Rail Vehicle Engineering Project Summary	Page 15
– P2550 Vehicle Acceptance Program	Page 16
• Quality Assurance	
– Warranty Program Projects Summary	Page 17
• Growth	
– Rail Fleet Service Training	Page 18

# Industrial Injuries – Lost Work Hours

## June 2010

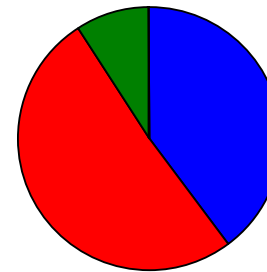
	Jul-09	Aug-09	Sep-09	Oct-09	Nov-09	Dec-09	Jan-10	Feb-10	Mar-10	Apr-10	May-10	Jun-10	Year to Date
Blue Line	144	48	112	352	288	200	176	160	264	256	328	424	2,752
Red Line	328	456	328	344	356	352	352	200	176	176	280	168	3,516
Green Line	0	0	0	0	8	136	168	168	136	16	3	0	635
Gold Line	0	0	0	0	0	8	0	0	0	0	0	0	8
Totals	472	504	440	696	652	696	696	528	576	448	611	592	6,911

June 2010 - Lost Work Hours



■ Blue Line ■ Red Line ■ Green Line ■ Gold Line

Year-to-Date Lost Work Hours



■ Blue Line ■ Red Line ■ Green Line ■ Gold Line

	Employees		June 2010 Lost Work Hours			
	Assigned	Active	Service Attendant	Maint. Specialist	Body Repairer /Painter	June 2010 Total Hrs.
Blue Line	106	101	80	168	176	424
Red Line	105	99	168	0	0	168
Green Line	48	46	0	0	0	0
Gold Line	50	49	0	0	0	0
Totals	309	295	248	168	176	592
Total Lost Work Hours for 12-months = hours						

# Rail Vehicle Accidents & Major Incidents

## June 2010

Repair Costs	Jul-09	Aug-09	Sep-09	Oct-09	Nov-09	Dec-09	Jan-10	Feb-10	Mar-10	Apr-10	May-10	Jun-10	Totals
Blue Line	\$9,262	\$0	\$2,122	\$0	\$38,396	\$656	\$39,034	\$5,600	\$11,305	\$2,100	\$5,705	\$2,050	\$116,230
Red Line	\$0	\$0	\$0	\$0	\$0	\$0	\$0	\$0	\$0	\$0	\$0	\$0	\$0
Green Line	\$0	\$0	\$0	\$0	\$0	\$0	\$0	\$0	\$0	\$0	\$4,799	\$0	\$4,799
Gold Line	\$0	\$0	\$14,310	\$0	\$3,538	\$0	\$17,028	\$4,404	\$0	\$0	\$3,523	\$0	\$42,803
Totals	\$9,262	\$0	\$16,432	\$0	\$41,934	\$656	\$56,062	\$10,004	\$11,305	\$2,100	\$14,027	\$2,050	\$163,832

Rail Vehicle Accident Costs - June 2010				
Metro Blue Main Line				
2010	Incident #	Problem code	Incident Description	Cost
6/1/10	1646510	(10-73) Train vs. Vehicle	Train #10, T-225, Long Beach Blvd. and Burnett Street, Track #1, N/B.	\$2,050.00
TOTAL FOR METRO BLUE LINE				\$2,050.00
Metro Gold Main Line				
2010	Incident #	Problem code	Incident Description	Cost
6/25/10	1681691	(10-72) Train vs. Pedestrian	Car 249B involved (lead end) and 230, trailing at Track 2, Del Mar Crossing.	\$0.00
TOTAL FOR METRO GOLD LINE				\$0.00
Metro Red Main Line				
2010	Incident #	Problem code	Incident Description	Cost
6/28/10	1685155	(10-73) Train vs. Pedestrian	Train #63, Young boy went between train and platform at Wilshire/Vermont.	\$0.00
TOTAL FOR METRO RED LINE				\$0.00
				\$2,050.00
(10-71) = Train vs. Object, (10-72) = Train vs. Pedestrian, (10-73) = Train vs. Vehicle (10-74) = Train vs. MTA Vehicle, (10-75) = Derailment				

# Service Delivery – AM/PM Pull-Outs

## June 2010

### Cars Available for AM/PM Pull-Outs

#### Blue Line – Fleet Size 69 cars

- Weekday pull-out: 60 cars
- Weekend pull-out: 36 cars
- **Monthly Mileage: 407,727 miles**

#### Red Line - Fleet Size 104 cars

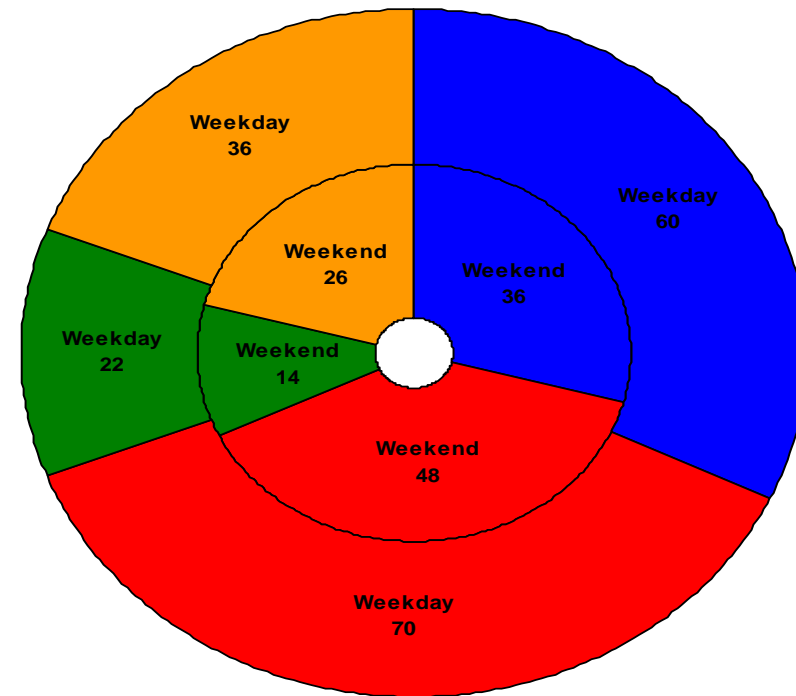
- Weekday pull-out: 70 cars
- Weekend pull-out: 48 cars
- **Monthly Mileage: 536,128 miles**

#### Green Line – Fleet Size 29 cars

- Weekday pull-out: 22 cars
- Weekend pull-out: 14 cars
- **Monthly Mileage: 217,580 miles**

#### Gold Line – Fleet Size 52 cars

- Weekday pull-out: 36 cars
- Weekend pull-out: 26 cars
- **Monthly Mileage: 222,262 miles**



■ Blue Line ■ Red Line ■ Green Line ■ Gold Line

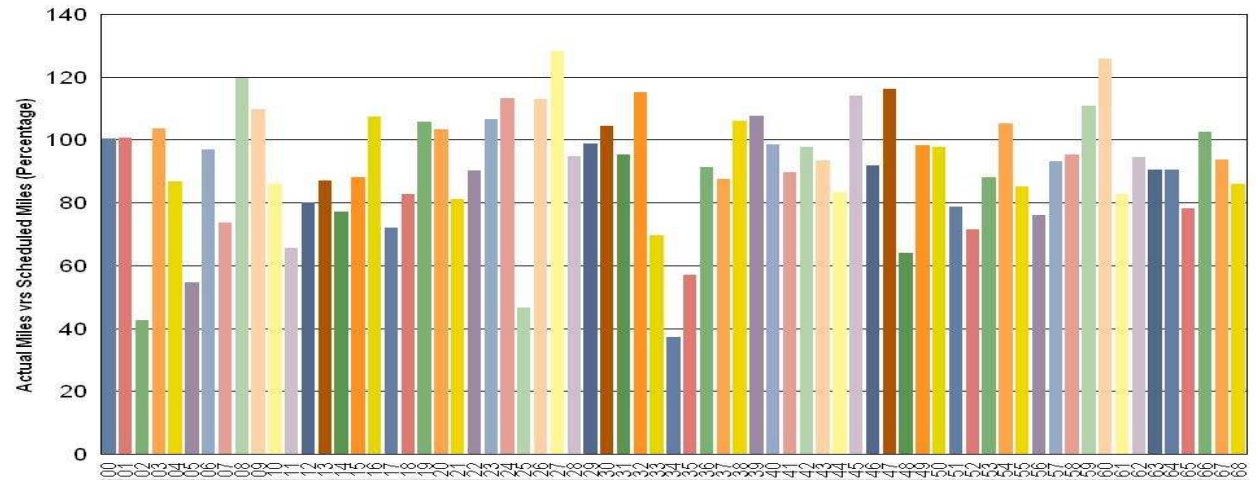
# Vehicle Utilization

## June 2010

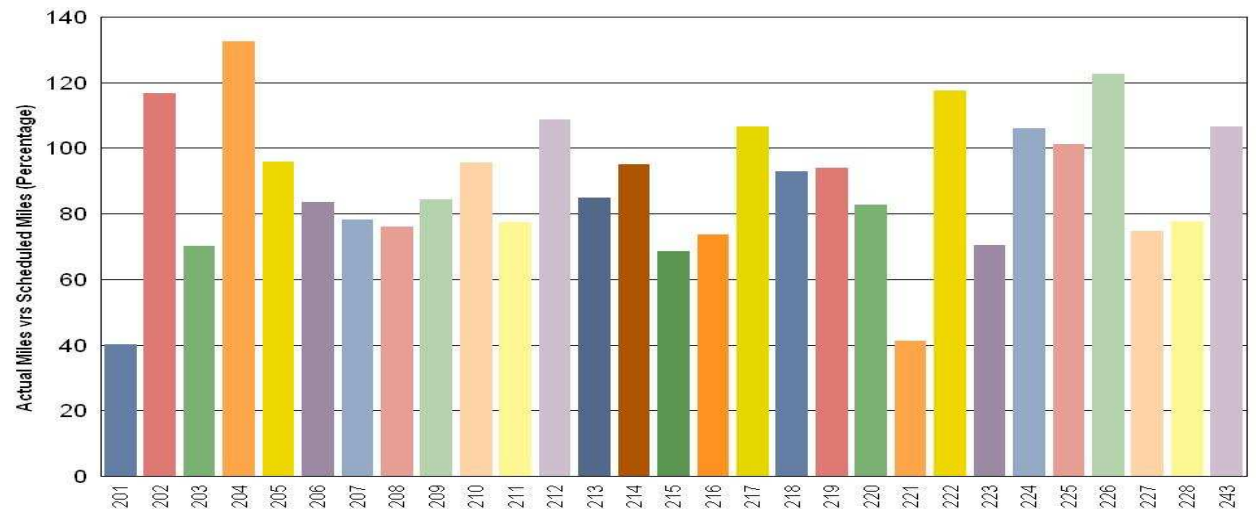
**Blue Line – The fleet has met the daily maximum utilization requirement for the month of June.**

***Note: Percentage includes an average 4% mileage deduction for Yard mileage and Vehicle Testing.***

**Metro Blue Line**



**Metro Green Line**



**Green Line – The fleet has met the daily maximum utilization requirement for the month of June.**

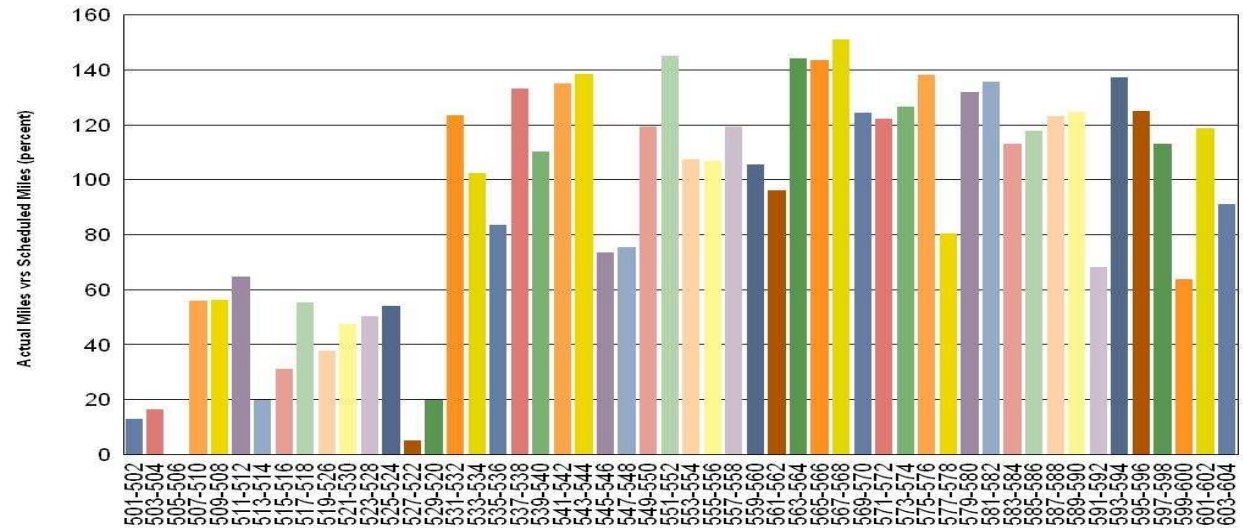
# Vehicle Utilization

## June 2010

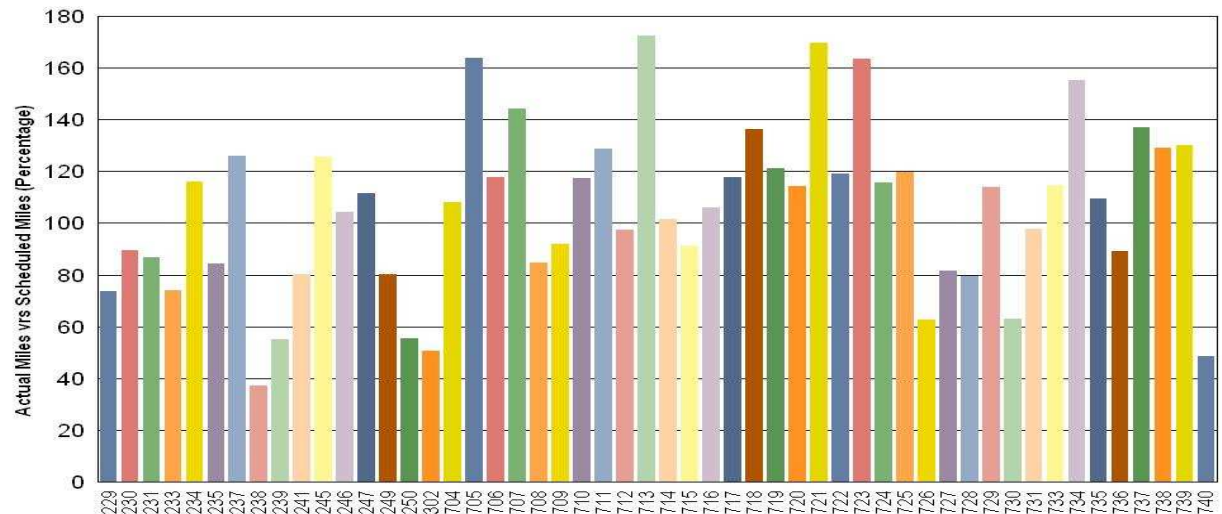
**Red Line – Vehicles #501-2, 503-4, 505-6, 513/14, & 527/522.** The low vehicle utilization is due to various system failures involving the blower motor, propulsion, brakes and car floor issues.

*Percentage includes an average 4% mileage deduction for Yard mileage and Vehicle Testing.*

**Metro Red Line**



**Metro Gold Line**



# Mean Miles Between Failures (Major)

## June 2010

### Miles Between Major Failures

**Blue Line:** 21,459 miles (19 Major Failures)

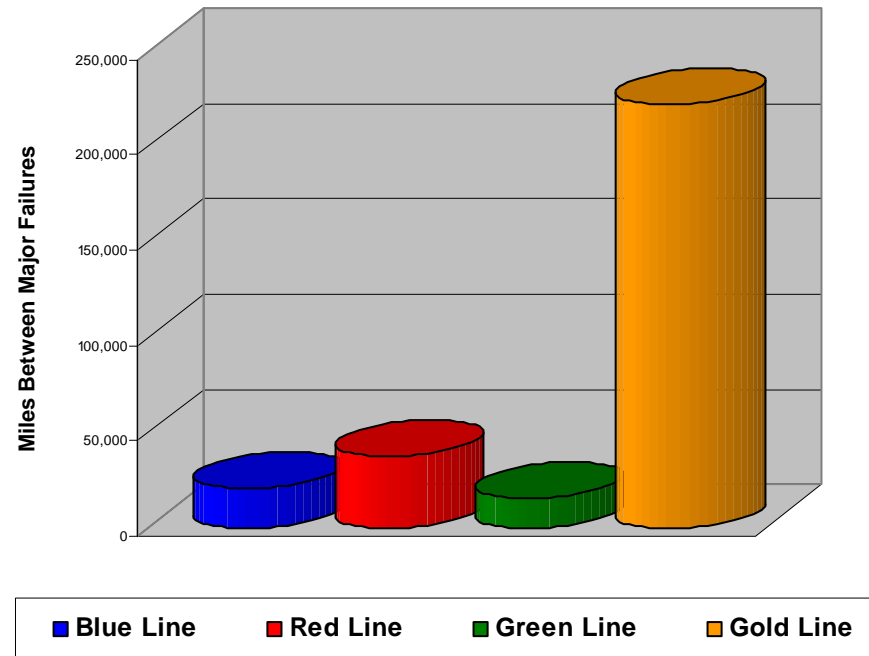
**Red Line:** 38,295 miles (14 Major Failures)

**Green Line:** 15,541 miles (14 Major Failures)

**Gold Line:** 222,262 miles (0 Major Failures)

**Siemens P2000** 54,010 miles (0 Major Failures)

**AnsaldoBreda P2550** 168,252 miles (0 Major Failures)





# Repeat Failures (Major)

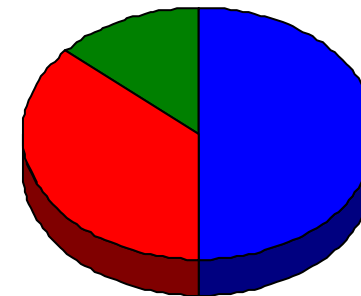
## June 2010

**Metro Blue Line:** 11 Repeat Failures

**Metro Red Line:** 8 Repeat Failures

**Metro Green Line:** 3 Repeat Failures

**Metro Gold Line:** 0 Repeat Failures



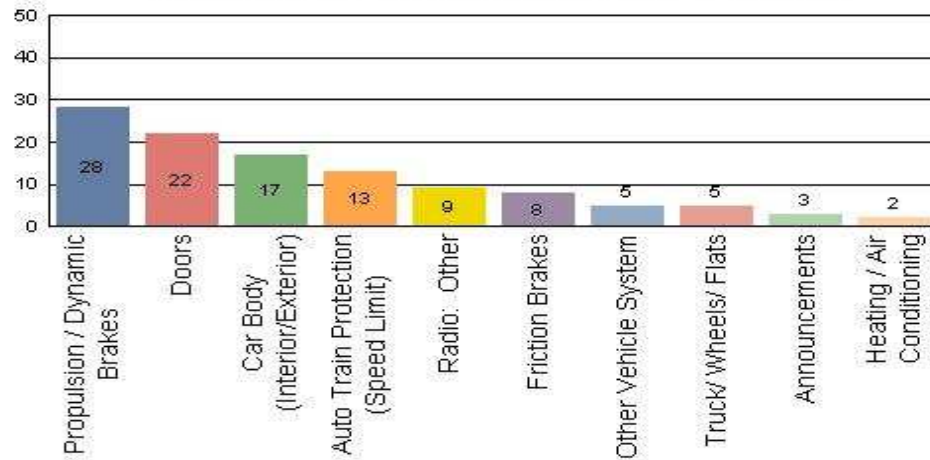
■ Blue Line ■ Red Line ■ Green Line ■ Gold Line

Repeater Car Details - June 2010								
System	Blue Line		Red Line		Green Line		Gold Line	
	Car #	Repeats	Car #	Repeats	Car #	Repeats	Car #	Repeats
Automated Train Operation					221	1		
Automated Train Protection	133	5	583	1				
Car Body								
Communication								
Doors								
Friction Brakes	152	3	546	2				
			548	1				
HVAC					206	1		
Propulsion/Dynamic Brake	107	1	507	1				
	121	1	592	3				
	138	1						
Radio					215	1		
TOTALS	11		8		3		0	

# Reported Incidents June 2010

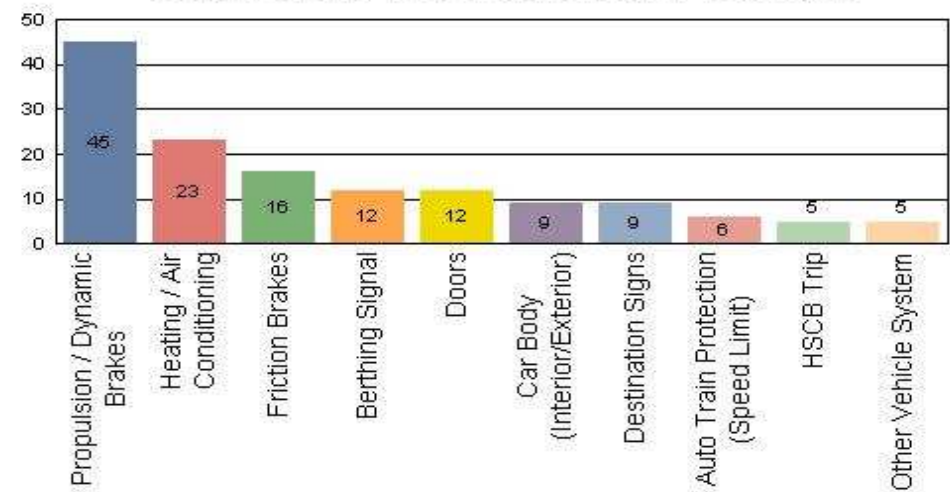
## Metro Blue Line

Count of the Top 10 Incident Problems



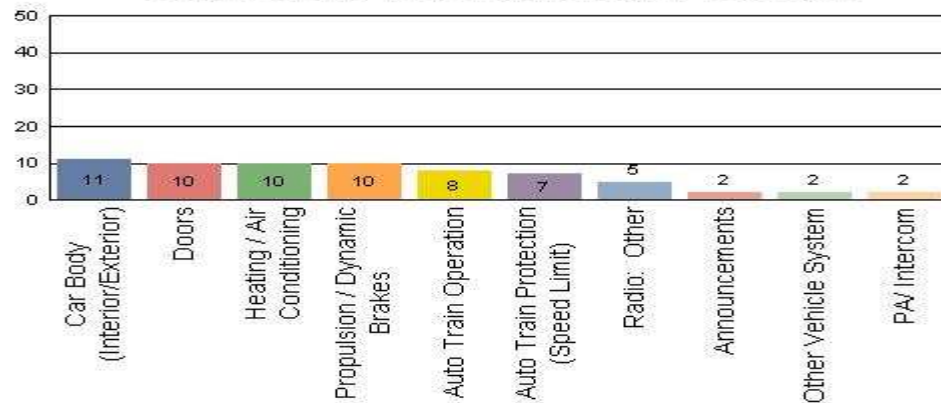
## Metro Red Line

Count of the Top 10 Incident Problems



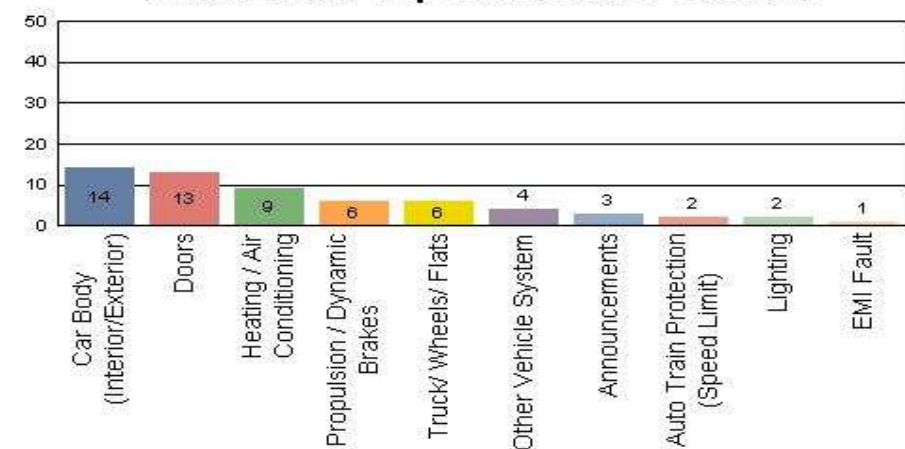
## Metro Green Line

Count of the Top 10 Incident Problems



## Metro Gold Line

Count of the Top 10 Incident Problems



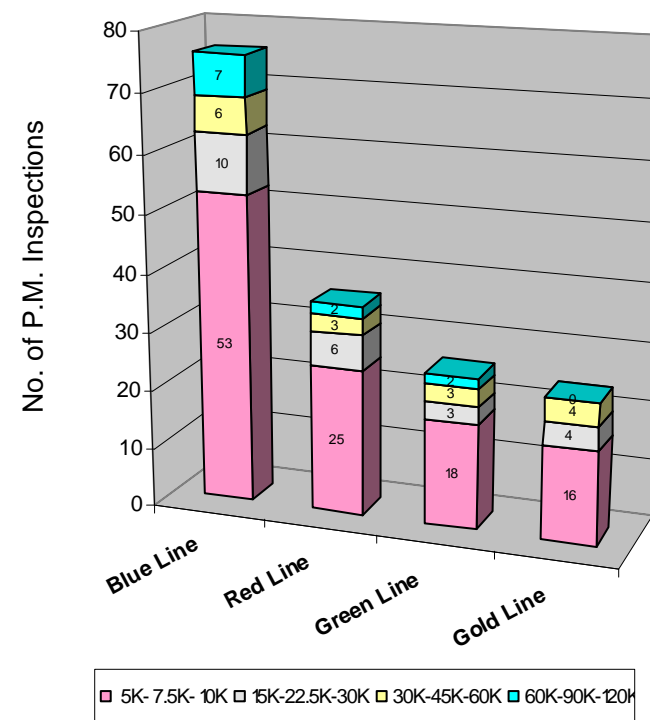
# Preventative Maintenance Compliance

## June 2010

Averages	Jun-09	Jul-09	Aug-09	Sep-09	Oct-09	Nov-09	Dec-09	Jan-10	Feb-10	Mar-10	Apr-10	May-10	Jun-10
Blue Line	100%	100%	100%	100%	100%	100%	100%	100%	100%	100%	100%	100%	100%
Red Line	100%	94%	100%	100%	100%	100%	100%	100%	100%	100%	100%	100%	100%
Green Line	100%	100%	100%	100%	100%	100%	100%	100%	100%	100%	100%	100%	100%
Gold Line	100%	100%	100%	100%	100%	100%	100%	100%	100%	100%	100%	100%	100%

June 2010 Preventative Maintenance Inspections

No. of P.M. Inspections	5K-7.5K-10K	15K-22.5K-30K	30K-45K-60K	60K-90K-120K	Totals	Percent Compliance
Blue Line	53	10	6	7	76	100%
Red Line	25	6	3	2	36	100%
Green Line	18	3	3	2	26	100%
Gold Line	16	4	4	0	24	100%
Totals:	112	23	16	11	162	100%

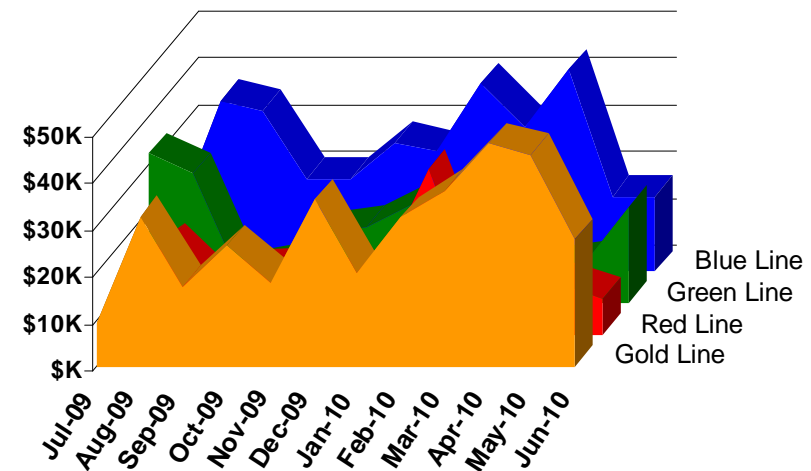


# Vandalism & Graffiti Report

## June 2010

	Jul-09	Aug-09	Sep-09	Oct-09	Nov-09	Dec-09	Jan-10	Feb-10	Mar-10	Apr-10	May-10	Jun-10	Year-to-Date
Blue Line	\$11,909	\$36,475	\$34,318	\$19,686	\$19,757	\$27,409	\$25,519	\$40,085	\$30,557	\$42,951	\$15,825	\$15,888	\$320,379
Green Line	\$31,788	\$27,501	\$6,774	\$8,355	\$14,915	\$16,393	\$20,985	\$35,216	\$20,933	\$7,585	\$8,615	\$20,555	\$219,615
Red Line	\$12,562	\$19,237	\$10,375	\$13,684	\$14,334	\$11,227	\$15,838	\$13,809	\$11,162	\$12,115	\$11,001	\$7,715	\$153,059
Gold Line	\$9,213	\$32,051	\$17,062	\$25,750	\$17,992	\$35,479	\$19,892	\$31,808	\$37,462	\$47,526	\$45,114	\$27,086	\$346,435
Totals	\$65,472	\$115,264	\$68,529	\$67,475	\$66,998	\$90,508	\$82,234	\$120,918	\$100,114	\$110,177	\$80,555	\$71,244	\$1,039,488

June 2010 Vandalism & Graffiti - All Rail				
	Qty	Labor	Materials	Totals
Windows replaced	7	\$1,386	\$1,868	\$ 3,254
Vandal Shields	314	\$6,818	\$3,111	\$ 9,928
Seats Cleaned	4,062	\$5,082	\$2,536	\$ 7,618
Seats Replaced	133	\$20,633	\$4,204	\$ 24,837
Ext/Int Repairs	987	\$410	\$3,784	\$ 4,193
Totals for June 2010		\$54,614	\$16,630	\$ 71,245



# Graffiti Pictures

## June 2010



A - Metro Blue Line



B - Metro Green Line



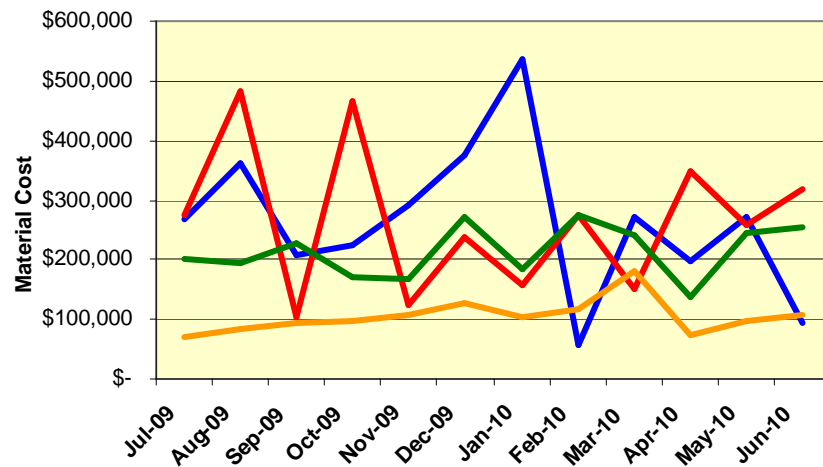
C - Metro Gold Line

# Material and Labor Costs

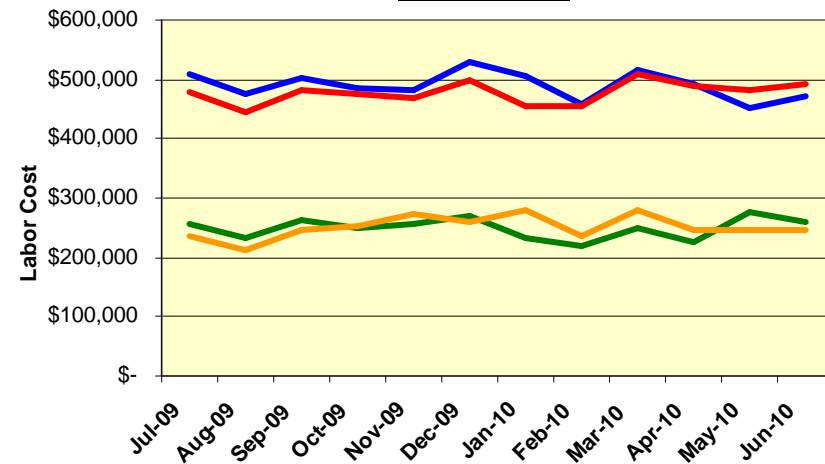
## June 2010

MATERIALS	Jul-09	Aug-09	Sep-09	Oct-09	Nov-09	Dec-09	Jan-10	Feb-10	Mar-10	Apr-10	May-10	Jun-10	Totals
Blue Line	\$ 268,164	\$ 363,633	\$ 207,364	\$ 225,796	\$ 290,113	\$ 375,541	\$ 535,717	\$ 57,633	\$ 270,743	\$ 197,253	\$ 272,347	\$ 94,924	\$ 3,159,228
Red Line	\$ 275,321	\$ 483,111	\$ 103,550	\$ 466,761	\$ 123,484	\$ 238,738	\$ 157,351	\$ 275,856	\$ 149,720	\$ 348,088	\$ 258,558	\$ 317,139	\$ 3,197,678
Green Line	\$ 199,680	\$ 194,727	\$ 229,080	\$ 169,738	\$ 168,715	\$ 272,871	\$ 184,149	\$ 276,116	\$ 240,194	\$ 136,768	\$ 244,408	\$ 256,000	\$ 2,572,446
Gold Line	\$ 70,787	\$ 84,679	\$ 93,780	\$ 96,151	\$ 106,126	\$ 128,297	\$ 105,109	\$ 117,356	\$ 179,658	\$ 72,343	\$ 98,102	\$ 105,801	\$ 1,258,190
Totals	\$ 813,952	\$ 1,126,150	\$ 633,774	\$ 958,446	\$ 688,438	\$ 1,015,447	\$ 982,326	\$ 726,961	\$ 840,315	\$ 754,453	\$ 873,415	\$ 773,864	\$ 8,540,263

**Material Costs**



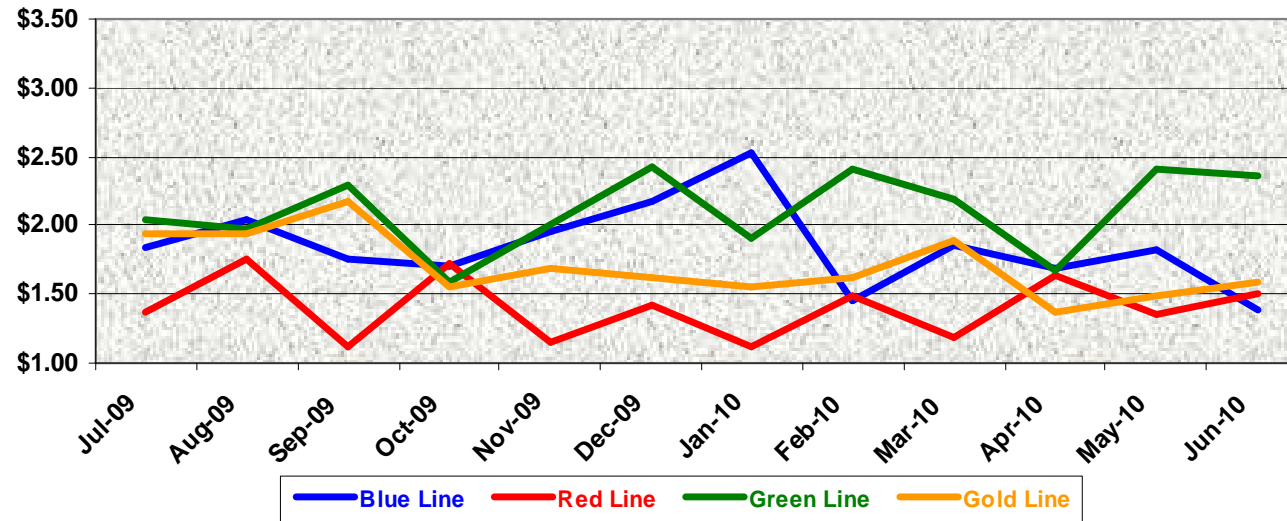
**Labor Costs**



LABOR	Jul-09	Aug-09	Sep-09	Oct-09	Nov-09	Dec-09	Jan-10	Feb-10	Mar-10	Apr-10	May-10	Jun-10
Blue Line	\$ 510,385	\$ 475,663	\$ 501,060	\$ 487,020	\$ 483,394	\$ 527,760	\$ 505,239	\$ 458,335	\$ 515,305	\$ 492,862	\$ 451,979	\$ 472,293
Red Line	\$ 478,135	\$ 444,523	\$ 481,469	\$ 474,751	\$ 468,331	\$ 498,786	\$ 453,571	\$ 453,580	\$ 510,664	\$ 487,627	\$ 482,974	\$ 492,936
Green Line	\$ 257,021	\$ 231,555	\$ 263,718	\$ 248,915	\$ 256,078	\$ 269,668	\$ 231,918	\$ 218,637	\$ 248,224	\$ 225,004	\$ 276,665	\$ 258,297
Gold Line	\$ 237,530	\$ 212,794	\$ 246,807	\$ 251,309	\$ 271,694	\$ 259,793	\$ 278,537	\$ 237,594	\$ 279,935	\$ 247,135	\$ 247,474	\$ 247,000
Totals	\$ 1,483,071	\$ 1,364,535	\$ 1,493,054	\$ 1,461,995	\$ 1,479,498	\$ 1,556,008	\$ 1,469,265	\$ 1,368,146	\$ 1,554,128	\$ 1,452,628	\$ 1,459,092	\$ 1,470,526

# Cost Per Mile June 2010

Cost per mile:	Jul-09	Aug-09	Sep-09	Oct-09	Nov-09	Dec-09	Jan-10	Feb-10	Mar-10	Apr-10	May-10	Jun-10	Average
Blue Line	\$1.83	\$2.04	\$1.76	\$1.71	\$1.96	\$2.18	\$2.53	\$1.45	\$1.85	\$1.69	\$1.82	\$1.39	\$1.85
Red Line	\$1.37	\$1.75	\$1.12	\$1.71	\$1.15	\$1.42	\$1.13	\$1.48	\$1.19	\$1.64	\$1.36	\$1.51	\$1.40
Green Line	\$2.05	\$1.97	\$2.29	\$1.59	\$2.01	\$2.43	\$1.91	\$2.41	\$2.20	\$1.67	\$2.41	\$2.36	\$2.11
Gold Line	\$1.94	\$1.94	\$2.17	\$1.55	\$1.69	\$1.62	\$1.55	\$1.62	\$1.89	\$1.37	\$1.49	\$1.59	\$1.70



No facility costs are included



# Absences vs. Overtime

## June 2010

<b>ABSENCE TYPE and HOURS</b>	<b>3940</b>	<b>3941</b>	<b>3942</b>	<b>3943</b>	<b>3944</b>	<b>Total</b>
AWP-ABSENT W/O PERMISSION				8.00		8.00
BER-BEREAVEMENT	48.00		32.00	24.00	24.00	128.00
CTO-COMPENSATORY TIME OFF		1.50		20.00	4.00	25.50
CVA - CASUAL VACATION			1,119.00	16.00	72.00	1,207.00
DSL-DISABILITY LEAVE/LONG		352.00	104.00			456.00
EFH-EMG. FLOAT HOL.		80.00	136.00	48.00	72.00	336.00
ETO-EXCUSED TIME OFF		33.00	16.50	5.00	22.00	76.50
FML-FAMILY CARE LEAVE		58.00	444.00	80.00	144.00	726.00
HLF-HOLIDAY FLOATING	96.00	880.00	480.00	192.00	264.00	1,912.00
II-INDUSTRIAL INJURY		424.00				424.00
IS-INVESTIGATIVE SUSPENSION			48.00			48.00
JUR-JURY DUTY		8.00	8.00		32.00	48.00
LC1-LABOR CODE 233	16.00	144.00	128.32	32.00	64.08	384.40
LTI-OCCPIL/LONGTRM INJ LEAVE			168.00			168.00
MLN-MILITARY ABSENCE-UNPAID			40.00	40.00		80.00
SCK-SICK PAY	40.00	208.00	52.00	160.00	48.00	508.00
SCW-SICK WITHOUT PAY			24.00	8.00		32.00
SUP-TEMPORARY SUPERVISOR		198.50	215.00	149.50	142.50	705.50
VAC-VACATION	120.00	1,168.00	420.00	757.50	368.00	2,833.50
<b>Total Absence Hours</b>	<b>320.00</b>	<b>3,555.00</b>	<b>3,434.82</b>	<b>1,540.00</b>	<b>1,256.58</b>	<b>10,106.40</b>
Number of Work Force	<b>19.00</b>	<b>106.00</b>	<b>105.00</b>	<b>48.00</b>	<b>50.00</b>	<b>328.00</b>
Full Work Force hours/month	<b>3,292.70</b>	<b>18,369.80</b>	<b>18,196.50</b>	<b>8,318.40</b>	<b>8,665.00</b>	<b>56,842.40</b>
<b>Absence as a % of Work Force</b>	<b>10%</b>	<b>19%</b>	<b>19%</b>	<b>19%</b>	<b>15%</b>	<b>18%</b>
<b>OVERTIME TYPE and HOURS</b>	<b>3940</b>	<b>3941</b>	<b>3942</b>	<b>3943</b>	<b>3944</b>	<b>Total</b>
CTB-COMPENSATORY TIME TO BANK	0.00	335.00	326.37	431.98	148.00	1,241.35
OTP-PREM OVERTIME	226.00	631.29	787.39	677.19	631.00	2,952.87
WLO-Worked Lunch Overtime	0.00	21.50	89.00	31.00	33.00	174.50
<b>Total</b>	<b>226.00</b>	<b>987.79</b>	<b>1,202.76</b>	<b>1,140.17</b>	<b>812.00</b>	<b>4,368.72</b>
<b>Overtime as a % of Work Force</b>	<b>7%</b>	<b>5%</b>	<b>7%</b>	<b>14%</b>	<b>9%</b>	<b>8%</b>
<b>UNCOVERED ABSENCES</b>	<b>3940</b>	<b>3941</b>	<b>3942</b>	<b>3943</b>	<b>3944</b>	<b>Total</b>
Absences FTE	1.85	20.51	19.82	8.88	7.25	58.31
OTP FTE	1.30	5.70	6.94	6.58	4.68	25.20
<b>FTE Difference</b>	<b>0.54</b>	<b>14.81</b>	<b>12.88</b>	<b>2.31</b>	<b>2.56</b>	<b>33.10</b>



# Rail Vehicle Engineering Project Summary

## June 2010

Program	Major Projects
<b>A650 Refurbishment</b>	Specification 75% complete, staff working with LTK Consultant to finalize.
<b>P3000 New Light Rail Vehicle Acquisition</b>	Specification 99% complete, EMI limits upgraded, awaiting Metro Board Authorization for RFP release.
<b>Expo Readiness P865 Fleet:</b>	Destination sign specification under review. Lower Amtrak horn modification (awaiting mainline test). Replace electronic gong with Quacker Horn at 75 dBA (car 119 modified) test bulletin released. Reprogram automated announcement center with Expo stations (not started). Conversion of GRC TWC to H&K TWC (test bulletin) underway, working with OEM on software upgrade, procure mounting brackets. No power (Acceleration) during ATP Overspeed, test bulletins released. Certification of GRS ATP use on Expo Line, awaiting M H-G approval.
<b>Expo Readiness P2000 Fleet:</b>	Destination signs & announcements for Expo Stations, Marketing to provide recordings. Add TWC route select feature (testing new EPROM and faceplate), OEM to modify software, test bulletin released. No power (Acceleration) during an ATP Overspeed, one car modified test bulletin released. Certification GE ATP Usage on Blue and Expo Lines, awaiting M H-G approval.
<b>P2000 Gold to Green Signal Package Conversion</b>	Awaiting management direction on NTP.
<b>Protran 1 Roadway Worker Protection Device</b>	Received production unit, prepping P2000 for function test at MGD.
<b>P2000 Component Overhaul</b>	Master controller, traction motor, LED destination sign (all in process), gearbox overhaul specification (being developed).
<b>P2550 Vehicle Acceptance</b>	Reported on separate page.
Technical Specification(s)	
<b>MBL, MGL, MRL, MGD (all fleet)</b>	P2000/TS/006 Rev. 01 – Bombardier to assemble 4 gearboxes in process. P2000/TS/030 Rev. 00 – Repair/Overhaul Gearbox (being developed). P2000/TS/011 Rev. 01 – Axle assembly (specification under development to include out of scope charges). P865/P2020/TS/037 Rev. 01 – Axle assembly (specification under development to include out of scope charges). MRL Midlife Overhaul Specification Review – As described above 75% complete. P865/P2020/TS/055 Rev. 00 – Destination sign curtain film (specification under review).
Active Test Bulletins	
<b>Blue Line (P865/P2020)</b>	Inspection interval investigation (5K-7.5K), door open relay, high horn, solid state relay.
<b>Red Line (A650 Base)</b>	Chevron springs, DC-AC traction motor blower, GE gear unit.
<b>A650 (Option)</b>	Pinion shaft, emergency door seal, gearbox, tension rod assembly, air spring, vandal shield, rubber boots (retest), brushes, motor evaporator.
<b>A650 (Option)</b>	0 test in progress.
<b>Gold Line (P2000 / P2550)</b>	0 test in progress.
Active Modification Bulletins	
<b>Blue Line (P865/P2020)</b>	Watch gap, wheelchair, security cameras, battery disconnect decals, gearbox long breather tube, HSCB reset circuit, window sash.
<b>Blue Line (P865/P2020)</b>	FCC high voltage decal, remove trip switch wiring per car; remove trip switch wiring per truck, manual controller mod. by American Transit, front door latch, replace end door threshold plate, dead battery start, buss bar isol.
<b>Green Line (P2000)</b>	Master controller with/new cam profiles, removal of convex mirror head, spin/slide sanding mod.
<b>Gold Line: (P2000)</b>	Battery disconnect decals.
Active Technical Request Form	
<b>Blue Line (P865/P2020)</b>	Destination signs, journal bearing, air compressor motor, chopper intake, damper assembly, Knorr washer, motor alternator set CB1 tripping problem.
<b>Red Line (A650 Option/Base)</b>	ATO berthing, tension rod assembly, Flender gearbox, pinion shaft, coupler corrosion cover, gate drive power supply, location decal, rectifier, door latching relay, twist lug connector, thermistor & TLR circuit failures, Pas.
<b>Red Line (A650 Option/Base)</b>	Door operator assemble repair vendor, sanding system, air vent grille, exterior rear view mirror, sun shade gear latch, fleet technical assistance, EMI trip faults.
<b>Gold Line (P2000/P2550)</b>	Truck Trimming investigation, operator door assembly overhaul.

# P2550 Vehicle Acceptance Program

## June 2010

### Vehicle Status Update:

- 40 cars at Metro
- 38 cars at MGDL
- 2 car at MBL
- A total of 37 Cars Conditionally Accepted (CA)
  - 1 car in burn-in (742)
- One car accepted in June.
- 10 Cars at Pittsburg Assembly Plant

### Engineering Activities Update:

- Brake disc nut & bolt replacement program - To date, 37 cars have been retrofitted with new hardware and 35 revenue service cars have new brake pads on motor trucks.
- HVAC unit upgrade – To date 23 cars have been retrofitted. The work is ongoing.
- Gateway Software revision 15 has been successfully installed on the fleet.
- Propulsion Software Upgrade - Rev 12 (A) was installed on the fleet addressing several issues (related to car wash mode, clock synchronization, EMI etc.).

### Production Car Status – Pittsburg:

- Car 703 -100 % complete, MTA inspected on 07/13/10.
- Car 744 - 90% complete, prepping for final inspection.
- Car 745 - 70% complete, preliminary testing in progress.
- Car 746 - 85% complete, assembly in progress.
- Cars 747, 748, 749, 750 - 20 to 40% complete, assembly in progress.
- Car 702 - All interior, undercar and wiring removed. Trucks 90% complete.
- Car 701 - Disassembly in progress, trucks to go back to Italy for retrofit.

### Project Management:

- Contract spares are being process and delivered to Metro on a weekly basis. Good progress.
- PMO/FTA requested plan to accept 10 cars by end of year, project team working on plan with AB/LTK.
- The next Project Review Meeting is scheduled the week of August 23<sup>rd</sup> in Los Angeles.
- Daily and weekly meetings with AB Project Management to solve revenue service issues.
- MMBF for June = 168,252 with no mainline failures.

# QA-Warranty Program Projects Summary

## June 2010

DEPARTMENT ADMINISTRATION ACTIVITIES (MRL, MGL, MBL & MDGL)
<p>Supervisory Oversight Responsibilities:</p> <ul style="list-style-type: none"> <li>• Audits Plans, Parts Processing, Monetary Recovery Data, Video Surveillance Archives, Safety, Oil Analysis, Accident / Incident Documentation, Share-Drive entry management, Overtime management Special Projects Tasking &amp; Maintenance Tech Assist Tasking.</li> <li>• Three PMI Audits completed divisions 20, 21 &amp; 22. Audit results forwarded to upper level management.</li> <li>➤ Major Issues Under Purview: (P2550)</li> <li>• Conditional Acceptance (C/A) Program, P2550 Reliability Demonstrations Testing, Equipment Bar Coding, Warranty issues &amp; Spare Parts Tracking.</li> <li>• Vehicle 741 C/A June 30<sup>th</sup>.</li> <li>➤ Major Issues Under Purview: (A650 Base Buy &amp; Option Vehicles)</li> <li>• Fleet defect (Truck Frame &amp; Traction Motor) Warranty – Details being worked with ABI "Fleet Retrofit".</li> </ul>
ERS ACTIVITIES (MRL, MGL, MBL & MDGL)
<ul style="list-style-type: none"> <li>• Produce Monthly &amp; Overtime Reports</li> <li>• Maintenance Management Admin support activities.</li> <li>• Incident &amp; Accident Reports, Video Surveillance Program documentation.</li> <li>• Spear M3 Equipment Records data entry.</li> </ul>
MRL ACTIVITIES
<ul style="list-style-type: none"> <li>• T/M Mount &amp; Truck Frame Project, (3) warranty repairs done in June.</li> <li>• PMI Audit done on Vehicles 501/502</li> <li>• FAls done on Chevron Springs, Ground Brushes and Line Breakers.</li> <li>• Processed R&amp;R &amp; Warranty parts.</li> <li>• Provided engineering assist Special Projects 5F30 Compressor, T/M bearings, Inverter Oscillators &amp; Coupler Cables</li> <li>➤ <b>Warranty Recovery via Cost Avoidance, Parts &amp; Labor for June \$45,851.50</b></li> </ul>
MBL ACTIVITIES
<ul style="list-style-type: none"> <li>• PMI Audit done on vehicle 201</li> <li>• Provided engineering assist Special Projects Expo Line Compatibility USR modification testing.</li> <li>• Processed Warranty &amp; R&amp;R Parts</li> <li>• Provided Maintenance tech assist equipment campaigns Door Systems, Car Body, Lighting Systems, &amp; Car interior Projects.</li> </ul>
MGL ACTIVITIES
<ul style="list-style-type: none"> <li>• Provided engineering assist Special Projects 9K2 Relay, Car 243 issues, Operator Mirrors.</li> <li>• Provided Maintenance tech assist equipment campaigns Doors, Traction Motors, Gearboxes &amp; Brake Systems.</li> <li>• Processed Warranty &amp; R&amp;R parts.</li> <li>• Two PMI Audits done on vehicles 218 &amp; 203.</li> <li>• Completed FAI's Swinger Motors.</li> <li>➤ <b>Warranty Recovery via Cost Avoidance, Parts &amp; Labor for June \$10,458.00</b></li> </ul>
MGDL ACTIVITIES
<ul style="list-style-type: none"> <li>• P2550, responsible for the PAAT Acceptance Project.</li> <li>• Pittsburgh travel, P2550 onsite progress inspections</li> <li>• P2550 review of documenting, deliverables &amp; maintenance records.</li> <li>• Processed R&amp;R &amp; Warranty Parts.</li> <li>• FAI &amp; parts inspections</li> <li>• Supported ABI &amp; RFSTS Engineering with car acceptance testing issues.</li> </ul>

# Rail Fleet Services Instruction

## June 2010

### Training classes completed during the month of June 2010

Description	Status	Start	End	Course Hours	Student Count	Training Hours
<b>Blue Line Training - (865/2020 &amp; P2000 LRV):</b>						
ETD INTRODUCTION TO HUMAN RESOURCES POLICIES	Complete	6/3/2010	6/3/2010	3	3	9
RFS SIEMENS 2000 FRICTION BRAKES	Complete	6/10/2010	6/30/2010	40	6	240
RFS SIEMENS 2000 T/B, SANDERS	Complete	6/30/2010	6/30/2010	4	6	24
RFS SIEMENS 2000 TRUCK	Complete	6/7/2010	6/10/2010	24	6	144
RFS SIEMENS 2000 COMMUNICATIONS	Complete	6/3/2010	6/5/2010	16	6	96
RFS SIEMENS 2000 LIGHTS & DEST. SIGNS	Complete	6/1/2010	6/2/2010	8	6	48
DRUG & ALCOHOL REASONABLE SUSPICION DETERMINATION	Complete	6/16/2010	6/16/2010	4	1	4
MOP LEGAL DEVELOPMENT AND ETHICS	Complete	6/2/2010	6/2/2010	3	1	3
FAMILY MEDICAL LEAVE TRAINING	Complete	6/7/2010	6/11/2010	1.5	2	3
FIS 111 GL INQUIRY	Complete	6/16/2010	6/16/2010	3	1	3
ADULT CPR/AED	Complete	6/4/2010	6/4/2010	5	1	5

**Total Blue Line Training (Hours): 579**

#### Red Line Training (Breda A650 HRV):

WAYSIDE WORKER PROTECTION	Complete	6/1/2010	6/23/2010	4	33	132
RAIL SYSTEM SAFETY	Complete	6/1/2010	6/15/2010	3	8	24
RFS BRED A650 COMMUN BENCH TESTER	Complete	6/18/2010	6/18/2010	4	1	4
RFS BRED A650 TICU	Complete	6/15/2010	6/16/2010	16	1	16
RFS BRED A650 COMMUNICATIONS	Complete	6/4/2010	6/8/2010	12	1	12
RFS BRED A650 HVAC	Complete	5/25/2010	6/1/2010	8	1	8
RFS BRED A650 COUPLER	Complete	6/3/2010	6/3/2010	8	1	8
LABOR INFORMATION MANAGEMENT SYSTEM	Complete	6/23/2010	6/23/2010	1	1	1
MOP LEGAL DEVELOPMENT AND ETHICS	Complete	6/2/2010	6/2/2010	3	3	9
P-CARD TRAINING FOR CARD HOLDERS & AOS	Complete	6/22/2010	6/22/2010	2	1	2
FIRST TIME SUPERVISION	Complete	6/14/2010	6/15/2010	10	1	10

**Total Red Line Training (Hours): 216**

#### Green Line Training (P2000 LRVs):

RFS SIEMENS 2000 FRICTION BRAKES	Complete	6/10/2010	6/30/2010	40	2	80
RFS SIEMENS 2000 T/B, SANDERS	Complete	6/30/2010	6/30/2010	4	2	8
RFS SIEMENS 2000 TRUCK	Complete	6/7/2010	6/10/2010	24	2	48
RFS SIEMENS 2000 COMMUNICATIONS	Complete	6/3/2010	6/5/2010	16	2	32
RFS SIEMENS 2000 LIGHTS & DEST. SIGNS	Complete	6/1/2010	6/2/2010	8	2	16
SKIN CANCER	Complete	6/24/2010	6/24/2010	1	1	1
FAMILY MEDICAL LEAVE TRAINING	Complete	6/7/2010	6/11/2010	1.5	3	4.5
SEXUAL HARASSMENT PREVENTION & TITLE VII	Complete	6/24/2010	6/24/2010	2	1	2

**Total Green Line Training (Hours): 191.5**

#### Gold Line Training (P2550 LRVs):

RFS ANSALDOBRED A2550 TRUCKS	Complete	6/23/2010	6/28/2010	20	5	100
RFS ANSALDOBRED A2550 CARBODY	Complete	6/21/2010	6/23/2010	16	5	80
SUSTAINABILITY AWARENESS TRAINING	Complete	6/29/2010	6/29/2010	2	1	2

**Total Gold Line Training (Hours): 182**

**Total Rail Fleet Services Instruction for the month of June 2010 (Hours): 1,168.5**

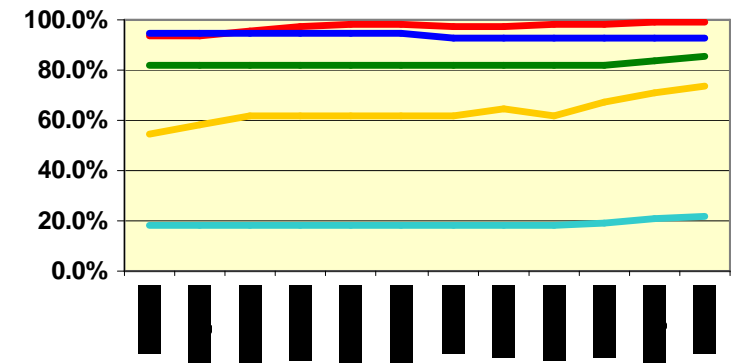
#### Core Vehicle Training Completed:

**BLUE RED GREEN GOLD**

Percentage of core vehicle training complete: **92.9% 99.1% 85.6% 73.4%**  
Siemens 2000 training complete: **22.2% N/A N/A N/A**

Average Specialist Rail Experience Level in Years: **10.8 10.6 7.7 8.8**

### Core Training Completed



**Variations caused by new hires, employee transfers, & training completed**



**Metro**