



Rail Fleet Services Monthly Report May 2010



Metro

Table of Contents

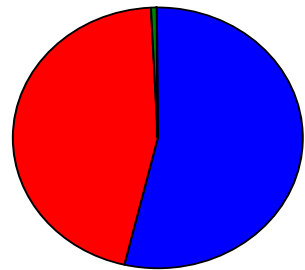
•	Safety	
–	Industrial Injuries	Page 1
–	Rail Vehicle Accidents & Major Incidents	Page 2
•	Customer Service	
–	Service Delivery – AM/PM Pull-Outs	Page 3
–	Vehicle Utilization – Blue Line & Green Line	Page 4
–	Vehicle Utilization – Red Line & Gold Line	Page 5
–	Mean Miles Between Failures (Major)	Page 6
–	Repeat Failures (Major)	Page 7
•	Business Processes	
–	Reported Incidents	Page 8
–	Preventative Maintenance Compliance	Page 9
•	Finance	
–	Vandalism & Graffiti Costs	Page 10
–	Graffiti Pictures	Page 11
–	Material & Labor Costs	Page 12
–	Cost per mile	Page 13
–	Absence vs. Overtime	Page 14
•	Engineering	
–	Rail Vehicle Engineering Project Summary	Page 15
–	P2550 Vehicle Acceptance Program	Page 16
•	Quality Assurance	
–	Warranty Program Projects Summary	Page 17
•	Growth	
–	Rail Fleet Service Training	Page 18

Industrial Injuries – Lost Work Hours

May 2010

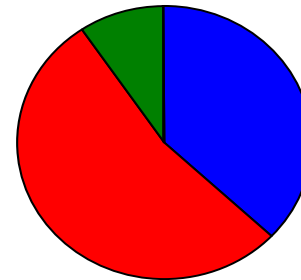
	Jun-09	Jul-09	Aug-09	Sep-09	Oct-09	Nov-09	Dec-09	Jan-10	Feb-10	Mar-10	Apr-10	May-10	Year to Date
Blue Line	208	144	48	112	352	288	200	176	160	264	256	328	2,536
Red Line	352	328	456	328	344	356	352	352	200	176	176	280	3,700
Green Line	0	0	0	0	0	8	136	168	168	136	16	3	635
Gold Line	0	0	0	0	0	0	8	0	0	0	0	0	8
Totals	560	472	504	440	696	652	696	696	528	576	448	611	6,879

May 2010 - Lost Work Hours



■ Blue Line ■ Red Line ■ Green Line ■ Gold Line

Year-to-Date Lost Work Hours



■ Blue Line ■ Red Line ■ Green Line ■ Gold Line

	Employees		May 2010 Lost Work Hours			
	Assigned	Active	Service Attendant	Maint. Specialist	Body Repairer /Painter	May 2010 Total Hrs.
Blue Line	107	102	0	168	160	328
Red Line	106	103	280	0	0	280
Green Line	48	47	3	0	0	3
Gold Line	50	50	0	0	0	0
Totals	311	302	283	168	160	611
Total Lost Work Hours for 12-months = hours						

Rail Vehicle Accidents & Major Incidents

May 2010

Repair Costs	Jun-09	Jul-09	Aug-09	Sep-09	Oct-09	Nov-09	Dec-09	Jan-10	Feb-10	Mar-10	Apr-10	May-10	Totals
Blue Line	\$189	\$9,262	\$0	\$2,122	\$0	\$38,396	\$656	\$39,034	\$5,600	\$11,305	\$2,100	\$5,705	\$114,369
Red Line	\$0	\$0	\$0	\$0	\$0	\$0	\$0	\$0	\$0	\$0	\$0	\$0	\$0
Green Line	\$2,481	\$0	\$0	\$0	\$0	\$0	\$0	\$0	\$0	\$0	\$0	\$4,799	\$7,280
Gold Line	\$189	\$0	\$0	\$14,310	\$0	\$3,538	\$0	\$17,028	\$4,404	\$0	\$0	\$3,523	\$42,992
Totals	\$2,859	\$9,262	\$0	\$16,432	\$0	\$41,934	\$656	\$56,062	\$10,004	\$11,305	\$2,100	\$14,027	\$164,641

Rail Vehicle Accident Costs - May 2010				
Metro Blue Main Line				
2010	Incident #	Problem code	Incident Description	Cost
5/7/10	1609912	(10-73) Train vs. Vehicle	Train #9 (135B) at Long Beach Blvd. and Hill Street.	\$3,767.00
5/7/10	1609991	(10-71) Train vs. Object	Train #10 (103B) T-050, Washington and Flower Street Track #1.	\$0.00
5/27/10	1640595	(10-71) Train vs. Object	Missile cracks on right car windshield (105B), T-052, Train #10, cars (105B 158-137, Track 1 (between Florence & Gage).	\$1,938.00
TOTAL FOR METRO BLUE LINE				\$5,705.00
Metro Gold Main Line				
2010	Incident #	Problem code	Incident Description	Cost
5/23/10	1633034	(10-73) Train vs. Vehicle	Hit and run by auto, Train #007, Track #001, N/B 3rd St. & Arizona, Car #(716A), T-017.	\$3,523.00
TOTAL FOR METRO GOLD LINE				\$3,523.00
Metro Green Main Line				
2010	Incident #	Problem code	Incident Description	Cost
5/23/10	1604836	(10-71) Train vs. Object	Missile breaks on windshield, T-291, Train #52 Cars (2015A), 210, Track #1 (west of Vermont).	\$4,799.00
5/20/10	1630190	(10-72) Train vs. Pedestrian	Train #55, Report indicates hitting a trespasser on ROW while emerging onto Avalon Station. T-162, Train 55, LRV 204A, Avalon Station, E/B on Track #2.	\$0.00
TOTAL FOR METRO GREEN LINE				\$4,799.00
No accidents for Red Line				
				\$14,027.00
(10-71) = Train vs. Object, (10-72) = Train vs. Pedestrian, (10-73) = Train vs. Vehicle (10-74) = Train vs. MTA Vehicle, (10-75) = Derailment				



Metro

Service Delivery – AM/PM Pull-Outs May 2010

Cars Available for AM/PM Pull-Outs

Blue Line – Fleet Size 69 cars

- Weekday pull-out: 60 cars
- Weekend pull-out: 36 cars
- **Monthly Mileage: 398,465 miles**

Red Line - Fleet Size 104 cars

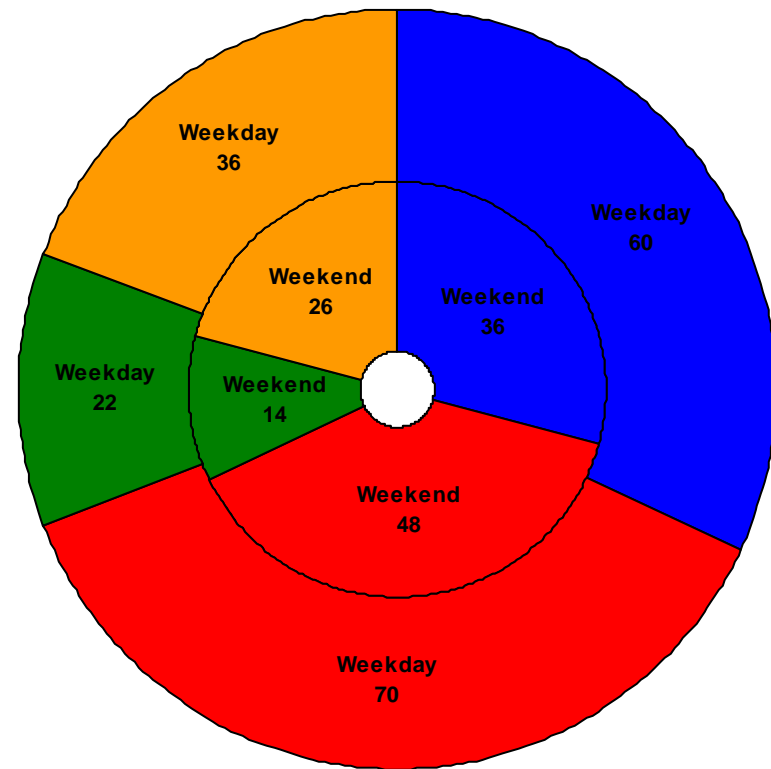
- Weekday pull-out: 70 cars
- Weekend pull-out: 48 cars
- **Monthly Mileage: 544,538 miles**

Green Line – Fleet Size 28 cars

- Weekday pull-out: 22 cars
- Weekend pull-out: 14 cars
- **Monthly Mileage: 216,449 miles**

Gold Line – Fleet Size 49 cars

- Weekday pull-out: 36 cars
- Weekend pull-out: 26 cars
- **Monthly Mileage: 232,562 miles**



■ Blue Line ■ Red Line ■ Green Line ■ Gold Line

Vehicle Utilization

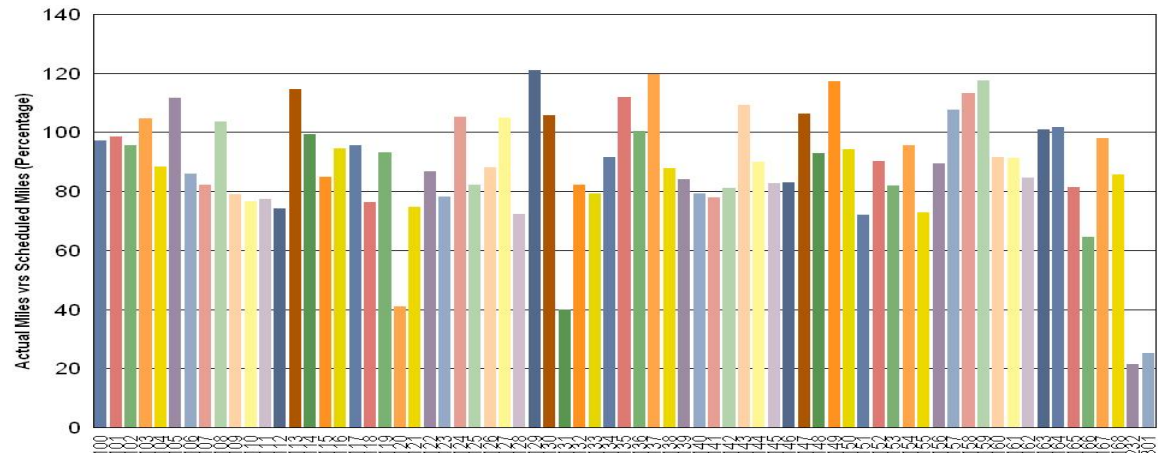
May 2010

Blue Line – Cars 232 & 301 are for the new EXPO fleet and are not in service at this time.

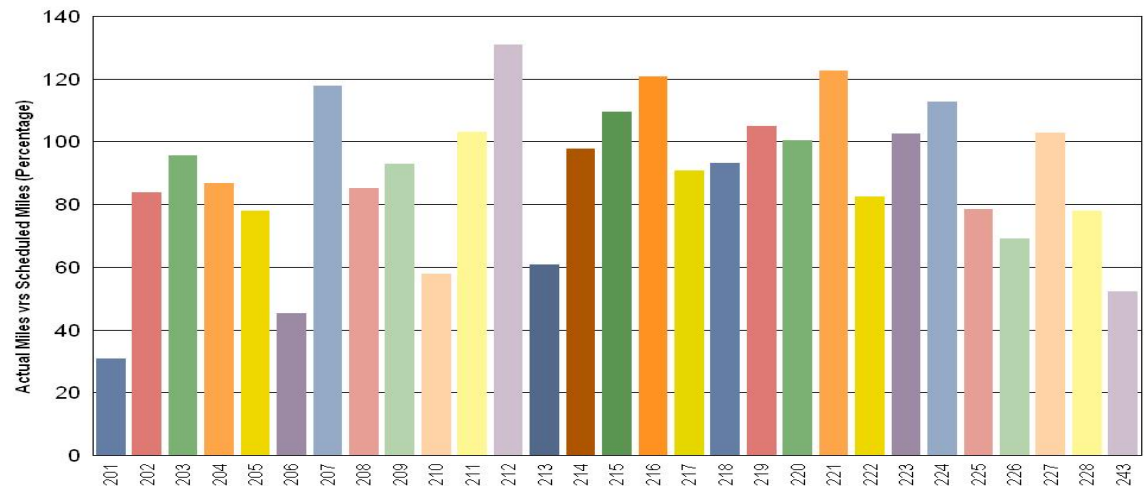
Note: Percentage includes an average 4% mileage deduction for Yard mileage and Vehicle Testing.

Green Line – The fleet has met the daily maximum utilization requirement for the month of May.

Metro Blue Line



Metro Green Line



Vehicle Utilization

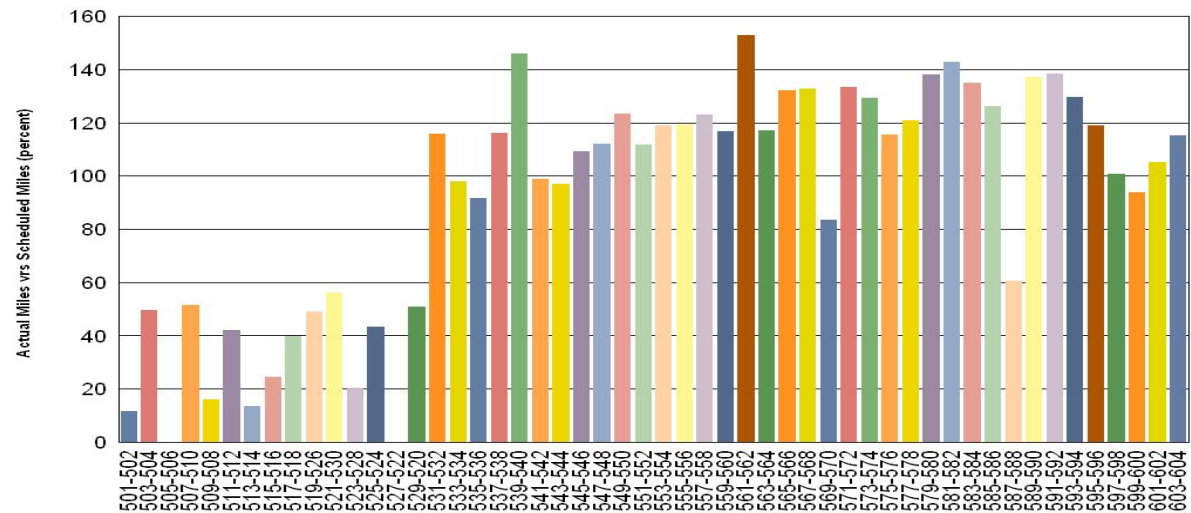
May 2010

Red Line – Vehicles #501/2, 505/6, 509/8, 513/14, 515/16, 523/24, & 527/522. The low vehicle utilization is due to various system failures. They are: blower motor, propulsion, brakes and car floor issues.

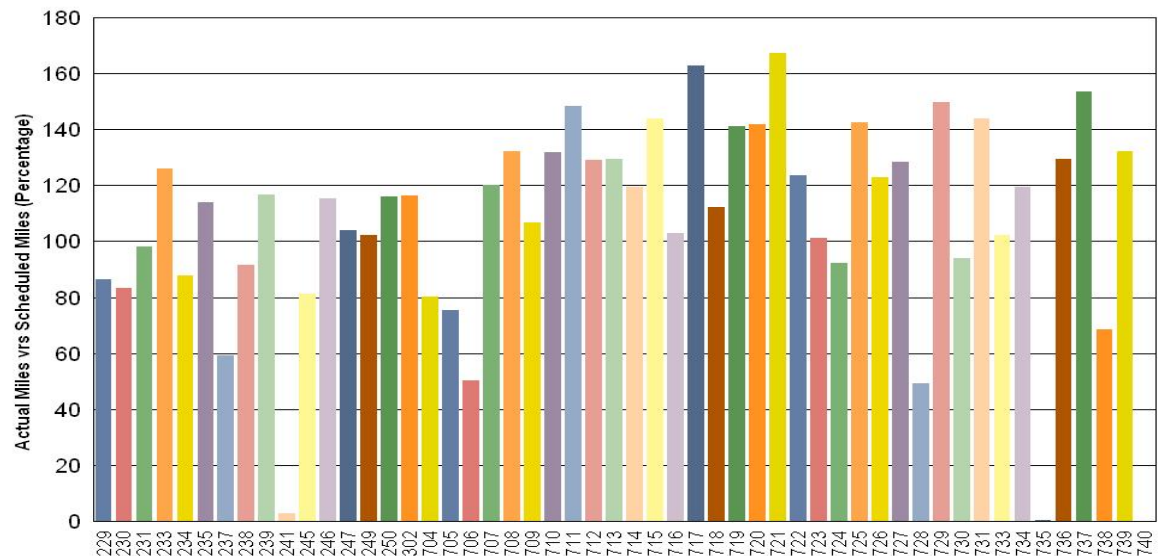
Percentage includes an average 4% mileage deduction for Yard mileage and Vehicle Testing.

Gold Line – Vehicle 740 was accepted by MTA on 5/20/10 however MTA/QA modifications needed to be installed (an approximate 7-10 day process). Vehicle ready for revenue service by 5/31/10.

Metro Red Line



Metro Gold Line



Mean Miles Between Failures (Major) May 2010

Miles Between Major Failures

Blue Line: 60,633 miles (7 Major Failures)

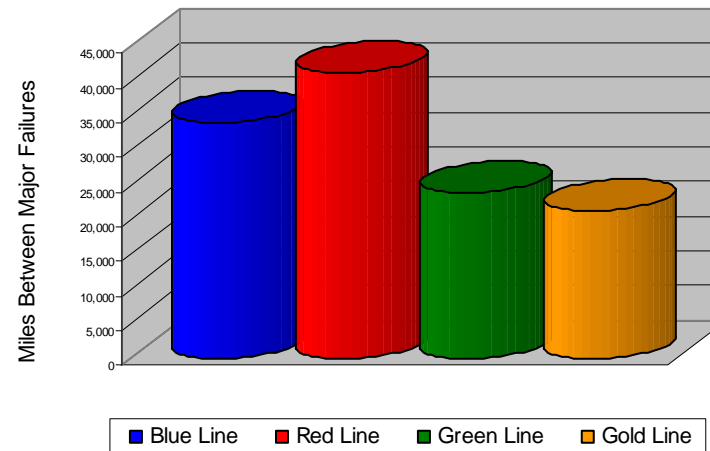
Red Line: 39,543 miles (14 Major Failures)

Green Line: 12,342 miles (18 Major Failures)

Gold Line: 18,665 miles (13 Major Failures)

Siemens P2000 10,028 miles (11 Major Failures)

AnsaldoBreda P2550 66,168 miles (2 Major Failures)



Major Failure: When a train does not complete its scheduled run or is more than 5 minutes late of its scheduled arrival time.

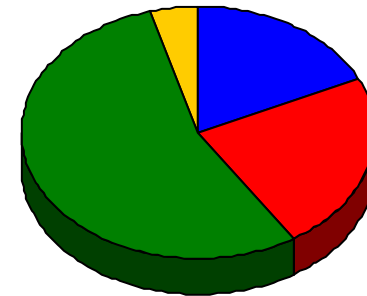
Repeat Failures (Major) May 2010

Metro Blue Line: 3 Repeat Failures

Metro Red Line: 5 Repeat Failures

Metro Green Line: 12 Repeat Failures

Metro Gold Line: 1 Repeat Failures



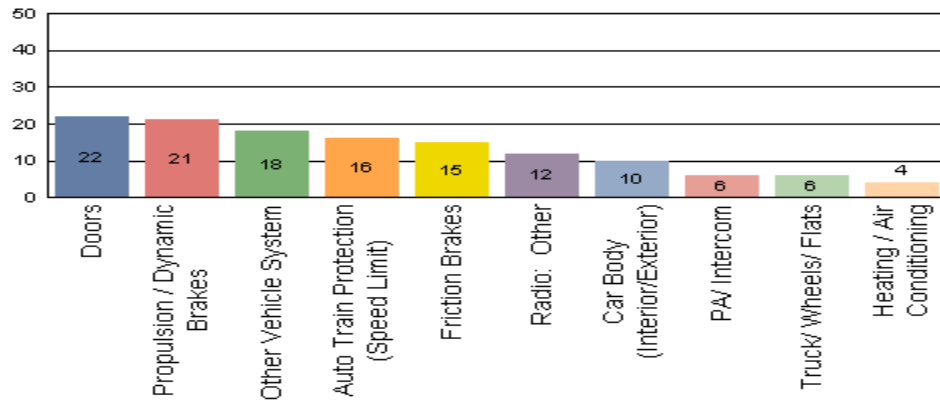
■ Blue Line ■ Red Line ■ Green Line ■ Gold Line

Repeater Car Details - May 2010								
System	Blue Line		Red Line		Green Line		Gold Line	
	Car #	Repeats	Car #	Repeats	Car #	Repeats	Car #	Repeats
Announcements	133	1						
Car Body								
Communication								
Doors							250	1
Friction Brakes			548	2				
Lighting	220	1			220	1		
Propulsion/Dynamic Brake	141	1	513	1	202	6		
			551	2	203	1		
					216	1		
					243	3		
TWC								
TOTALS	3		5		12		1	

Reported Incidents May 2010

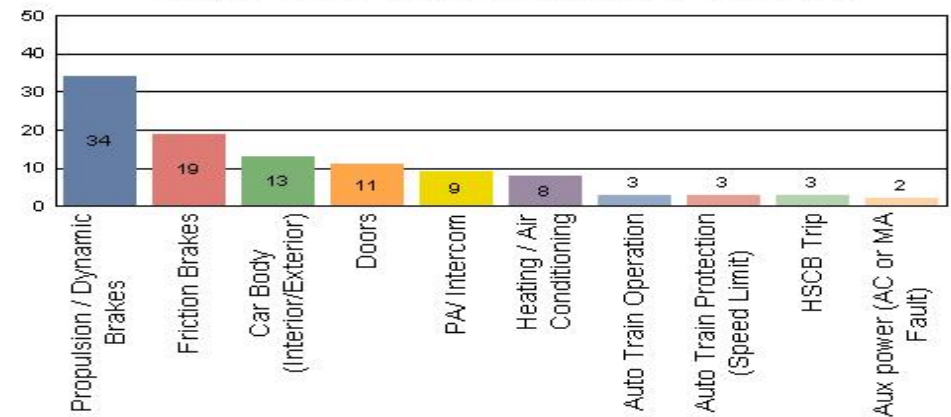
Metro Blue Line

Count of the Top 10 Incident Problems



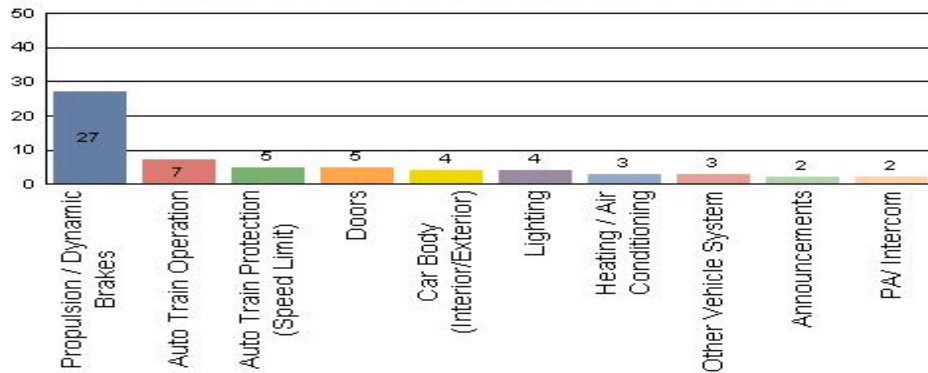
Metro Red Line

Count of the Top 10 Incident Problems



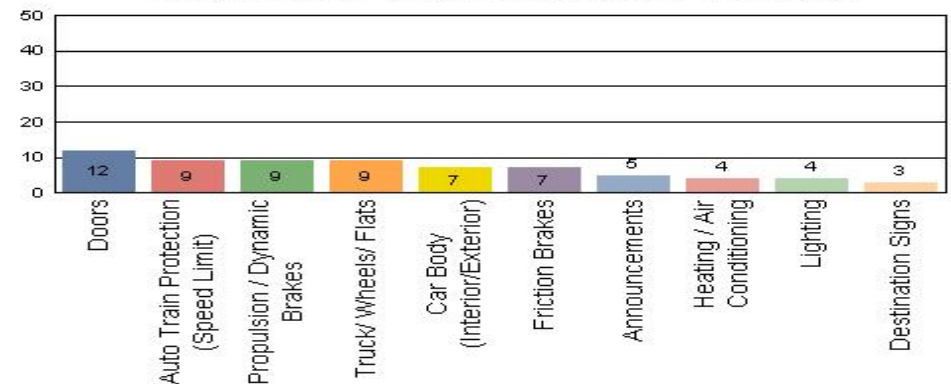
Metro Green Line

Count of the Top 10 Incident Problems



Metro Gold Line

Count of the Top 10 Incident Problems



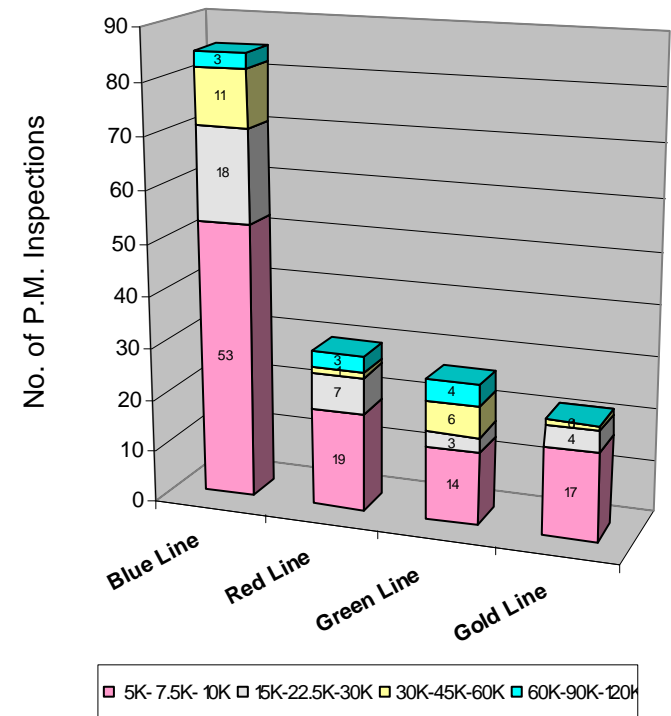
Preventative Maintenance Compliance

May 2010

Averages	May-09	Jun-09	Jul-09	Aug-09	Sep-09	Oct-09	Nov-09	Dec-09	Jan-10	Feb-10	Mar-10	Apr-10	May-10
Blue Line	100%	100%	100%	100%	100%	100%	100%	100%	100%	100%	100%	100%	100%
Red Line	100%	100%	94%	100%	100%	100%	100%	100%	100%	100%	100%	100%	100%
Green Line	100%	100%	100%	100%	100%	100%	100%	100%	100%	100%	100%	100%	100%
Gold Line	100%	100%	100%	100%	100%	100%	100%	100%	100%	100%	100%	100%	100%

May 2010 Preventative Maintenance Inspections

No. of P.M. Inspections	5K-7.5K-10K	15K-22.5K-30K	30K-45K-60K	60K-90K-120K	Totals	Percent Compliance
Blue Line	53	18	11	3	85	100%
Red Line	19	7	1	3	30	100%
Green Line	14	3	6	4	27	100%
Gold Line	17	4	1	0	22	100%
Totals:	103	32	19	10	164	100%

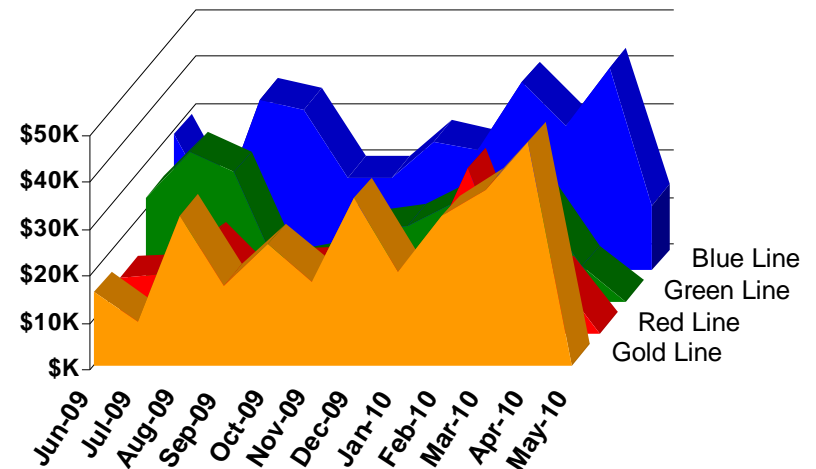


Vandalism & Graffiti Report

May 2010

	Jun-09	Jul-09	Aug-09	Sep-09	Oct-09	Nov-09	Dec-09	Jan-10	Feb-10	Mar-10	Apr-10	May-10	Year-to-Date
Blue Line	\$28,914	\$11,909	\$36,475	\$34,318	\$19,686	\$19,757	\$27,409	\$25,519	\$40,085	\$30,557	\$42,951	\$15,825	\$333,405
Green Line	\$22,307	\$31,788	\$27,501	\$6,774	\$8,355	\$14,915	\$16,393	\$20,985	\$35,216	\$20,933	\$7,585	\$8,615	\$221,367
Red Line	\$12,013	\$12,562	\$19,237	\$10,375	\$13,684	\$14,334	\$11,227	\$15,838	\$13,809	\$11,162	\$12,115	\$11,001	\$157,357
Gold Line	\$15,543	\$9,213	\$32,051	\$17,062	\$25,750	\$17,992	\$35,479	\$19,892	\$31,808	\$37,462	\$47,526	\$45,114	\$334,892
Totals	\$78,777	\$65,472	\$115,264	\$68,529	\$67,475	\$66,998	\$90,508	\$82,234	\$120,918	\$100,114	\$110,177	\$80,555	\$1,047,021

May 2010 Vandalism & Graffiti - All Rail				
	Qty	Labor	Materials	Totals
Windows replaced	4	\$1,575	\$1,112	\$ 2,687
Vandal Shields	505	\$13,756	\$6,287	\$ 20,042
Seats Cleaned	4,226	\$10,034	\$497	\$ 10,531
Seats Replaced	103	\$3,245	\$3,605	\$ 6,850
Ext/Int Repairs	1,012	\$4,450	\$250	\$ 4,700
Totals for May 2010		\$62,386	\$18,169	\$ 80,555



Graffiti Pictures

May 2010



A - Metro Blue Line



B - Metro Green Line



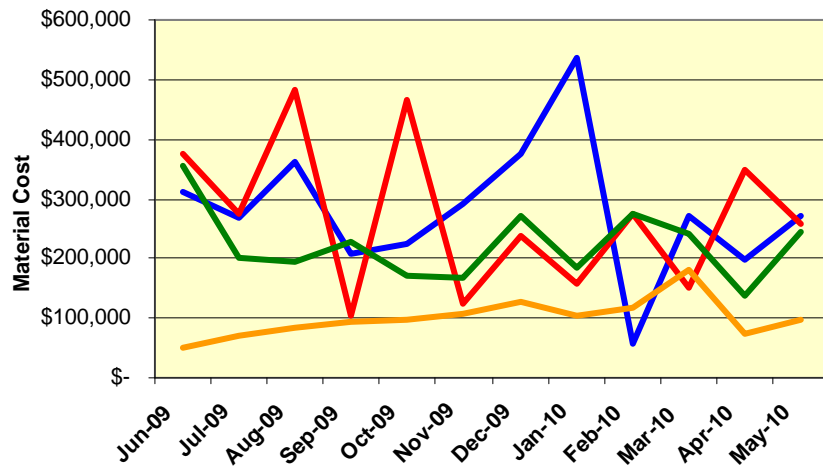
C - Metro Gold Line

Material and Labor Costs

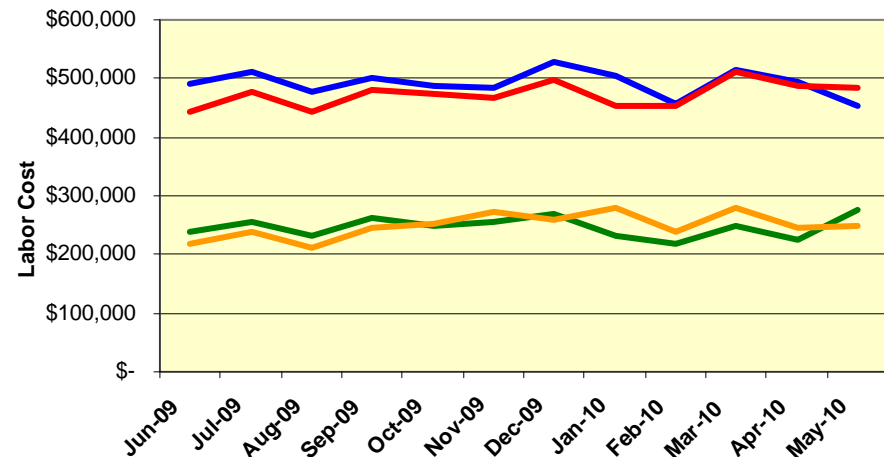
May 2010

MATERIALS	Jun-09	Jul-09	Aug-09	Sep-09	Oct-09	Nov-09	Dec-09	Jan-10	Feb-10	Mar-10	Apr-10	May-10	Totals
Blue Line	\$ 310,619	\$ 268,164	\$ 363,633	\$ 207,364	\$ 225,796	\$ 290,113	\$ 375,541	\$ 535,717	\$ 57,633	\$ 270,743	\$ 197,253	\$ 272,347	\$ 3,374,923
Red Line	\$ 375,408	\$ 275,321	\$ 483,111	\$ 103,550	\$ 466,761	\$ 123,484	\$ 238,738	\$ 157,351	\$ 275,856	\$ 149,720	\$ 348,088	\$ 258,558	\$ 3,255,947
Green Line	\$ 356,213	\$ 199,680	\$ 194,727	\$ 229,080	\$ 169,738	\$ 168,715	\$ 272,871	\$ 184,149	\$ 276,116	\$ 240,194	\$ 136,768	\$ 244,408	\$ 2,672,659
Gold Line	\$ 49,593	\$ 70,787	\$ 84,679	\$ 93,780	\$ 96,151	\$ 106,126	\$ 128,297	\$ 105,109	\$ 117,356	\$ 179,658	\$ 72,343	\$ 98,102	\$ 1,201,982
Totals	\$ 1,091,833	\$ 813,952	\$ 1,126,150	\$ 633,774	\$ 958,446	\$ 688,438	\$ 1,015,447	\$ 982,326	\$ 726,961	\$ 840,315	\$ 754,453	\$ 873,415	\$ 8,877,643

Material Costs



Labor Costs

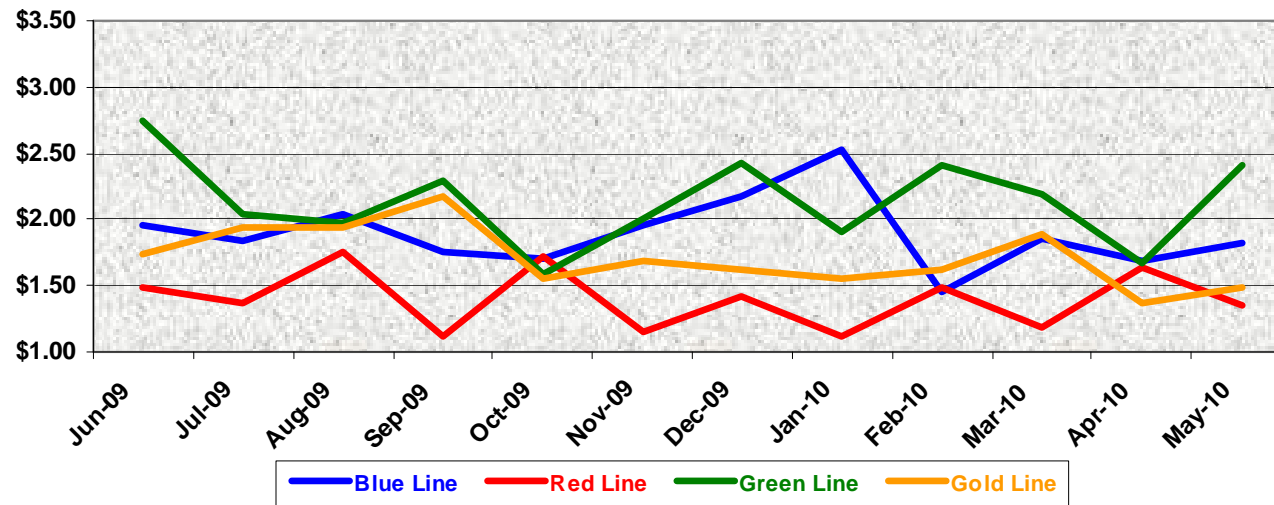


LABOR	Jun-09	Jul-09	Aug-09	Sep-09	Oct-09	Nov-09	Dec-09	Jan-10	Feb-10	Mar-10	Apr-10	May-10
Blue Line	\$ 491,565	\$ 510,385	\$ 475,663	\$ 501,060	\$ 487,020	\$ 483,394	\$ 527,760	\$ 505,239	\$ 458,335	\$ 515,305	\$ 492,862	\$ 451,979
Red Line	\$ 443,065	\$ 478,135	\$ 444,523	\$ 481,469	\$ 474,751	\$ 468,331	\$ 498,786	\$ 453,571	\$ 453,580	\$ 510,664	\$ 487,627	\$ 482,974
Green Line	\$ 238,192	\$ 257,021	\$ 231,555	\$ 263,718	\$ 248,915	\$ 256,078	\$ 269,668	\$ 231,918	\$ 218,637	\$ 248,224	\$ 225,004	\$ 276,665
Gold Line	\$ 216,686	\$ 237,530	\$ 212,794	\$ 246,807	\$ 251,309	\$ 271,694	\$ 259,793	\$ 278,537	\$ 237,594	\$ 279,935	\$ 247,135	\$ 247,474
Totals	\$ 1,389,509	\$ 1,483,071	\$ 1,364,535	\$ 1,493,054	\$ 1,461,995	\$ 1,479,498	\$ 1,556,008	\$ 1,469,265	\$ 1,368,146	\$ 1,554,128	\$ 1,452,628	\$ 1,459,092

Cost Per Mile

May 2010

Cost per mile:	Jun-09	Jul-09	Aug-09	Sep-09	Oct-09	Nov-09	Dec-09	Jan-10	Feb-10	Mar-10	Apr-10	May-10	Average
Blue Line	\$1.95	\$1.83	\$2.04	\$1.76	\$1.71	\$1.96	\$2.18	\$2.53	\$1.45	\$1.85	\$1.69	\$1.82	\$1.90
Red Line	\$1.49	\$1.37	\$1.75	\$1.12	\$1.71	\$1.15	\$1.42	\$1.13	\$1.48	\$1.19	\$1.64	\$1.36	\$1.40
Green Line	\$2.75	\$2.05	\$1.97	\$2.29	\$1.59	\$2.01	\$2.43	\$1.91	\$2.41	\$2.20	\$1.67	\$2.41	\$2.14
Gold Line	\$1.73	\$1.94	\$1.94	\$2.17	\$1.55	\$1.69	\$1.62	\$1.55	\$1.62	\$1.89	\$1.37	\$1.49	\$1.71



No facility costs are included

Absences vs. Overtime

May 2010

ABSENCE TYPE and HOURS	3940	3941	3942	3943	3944	Total
AWP-ABSENT W/O PERMISSION	0.00	12.00	16.00	0.00	0.00	28.00
BER-BEREAVEMENT	0.00	64.00	48.00	0.00	0.00	112.00
CTO-COMPENSATORY TIME OFF	12.00	331.72	310.15	292.80	198.00	1,144.67
CVA - CASUAL VACATION	16.00	0.00	912.00	8.00	4.00	940.00
DRN-DR. APPOINTMENT 48 HR NOT	0.00	0.00	0.00	2.00	0.00	2.00
DSL-DISABILITY LEAVE/LONG	0.00	304.00	16.00	0.00	80.00	400.00
EFH-EMG. FLOAT HOL.	0.00	8.00	144.00	48.00	16.00	216.00
ETO-EXCUSED TIME OFF	0.50	37.50	18.50	7.50	17.50	81.50
FML-FAMILY CARE LEAVE	0.00	188.00	240.00	72.33	48.00	548.33
HLF-HOLIDAY FLOATING	32.00	344.00	420.00	208.00	240.00	1,244.00
HNP-HOLIDAY NOT PAID	0.00	0.00	24.00	0.00	0.00	24.00
HOL-HOLIDAY LEGAL	24.00	512.00	480.00	160.00	160.00	1,336.00
II-INDUSTRIAL INJURY	0.00	336.00	104.00	3.02	0.00	443.02
JUR-JURY DUTY	0.00	0.00	8.00	8.00	0.00	16.00
LC1-LABOR CODE 233	0.00	128.00	185.50	76.00	168.00	557.50
LTI-OCCPIL/LONGTRM INJ LEAVE	0.00	0.00	176.00	0.00	0.00	176.00
MLN-MILITARY ABSENCE-UNPAID	0.00	0.00	96.00	8.00	0.00	104.00
OWP-OFF WITH PERMISSION	0.00	0.00	0.00	8.00	12.00	20.00
RTO-REQUESTED TIME OFF-NO PAY	0.00	16.50	0.00	0.00	0.00	16.50
SCK-SICK PAY	24.00	320.00	289.12	147.23	76.00	856.35
SCW-SICK WITHOUT PAY	0.00	50.50	55.57	3.00	32.00	141.07
SUP-TEMPORARY SUPERVISOR	0.00	312.30	203.00	213.82	261.00	990.12
VAC-VACATION	8.00	823.17	96.75	397.00	507.00	1,831.92
Total Absence Hours	116.50	3,787.69	3,842.59	1,662.70	1,819.50	11,228.98
Number of Work Force	19.00	107.00	106.00	48.00	50.00	330.00
Full Work Force hours/month	3,292.70	18,543.10	18,369.80	8,318.40	8,665.00	57,189.00
Absence as a % of Work Force	4%	20%	21%	20%	21%	20%
OVERTIME TYPE and HOURS	3940	3941	3942	3943	3944	Total
CTB-COMPENSATORY TIME TO BANK	0.00	30.68	56.00	43.00	16.00	145.68
OTP-PREM OVERTIME	204.00	897.00	1,026.36	1,391.08	1,242.00	4,760.44
WLO-Worked Lunch Overtime	0.00	22.40	91.50	37.00	38.00	188.90
Total	204.00	950.08	1,173.86	1,471.08	1,296.00	5,095.02
Overtime as a % of Work Force	6%	5%	6%	18%	15%	9%
UNCOVERED ABSENCES	3940	3941	3942	3943	3944	Total
Absences FTE	0.67	21.85	22.17	9.59	10.50	64.78
OTP FTE	1.18	5.48	6.77	8.49	7.48	29.39
FTE Difference	-0.50	16.37	15.40	1.11	3.02	35.39

Rail Vehicle Engineering Project Summary

May 2010

Program	Major Projects
A650 Refurbishment	Specification 75% complete, staff working with LTK Consultant to finalize.
P3000 New Light Rail Vehicle Acquisition	Specification 99% complete, EMI limits upgraded, awaiting Metro Board Authorization for RFP release.
Expo Readiness P865 Fleet:	Destination sign specification under review.
	Lower Amtrak horn modification (awaiting mainline test).
	Replace electronic gong with Quacker Horn at 75 dBA (car 119 modified) test bulletin released.
	Reprogram automated announcement center with Expo stations (not started).
	Conversion of GRC TWC to H&K TWC (test bulletin) underway, working with OEM on software upgrade, procure mounting brackets.
	No power (Acceleration) during ATP Overspeed, test bulletins released.
	Certification of GRS ATP use on Expo Line, awaiting M H-G approval.
Expo Readiness P2000 Fleet:	Destination signs & announcements for Expo Stations, Marketing to provide recordings.
	Add TWC route select feature (testing new EPROM and faceplate), OEM to modify software, test bulletin released.
	No power (Acceleration) during an ATP Overspeed, one car modified test bulletin released.
	Certification GE ATP Usage on Blue and Expo Lines, awaiting M H-G approval.
P2000 Gold to Green Signal Package Conversion	Awaiting management direction on NTP.
Protran 1 Roadway Worker Protection Device	Received production unit, prepping P2000 for function test at MGD.
P2000 Component Overhaul	Master controller, traction motor, LED destination sign (all in process), gearbox overhaul specification (being developed).
P2550 Vehicle Acceptance	Reported on separate page.
Technical Specification(s)	
MBL, MGL, MRL, MGD (all fleet)	P2000/TS/006 Rev. 01 – Bombardier to assemble 4 gearboxes in process.
	P2000/TS/030 Rev. 00 – Repair/Overhaul Gearbox (being developed).
	P2000/TS/011 Rev. 01 – Axle assembly (specification under development to include out of scope charges).
	P865/P2020/TS/037 Rev. 01 – Axle assembly (specification under development to include out of scope charges).
	MRL Midlife Overhaul Specification Review – As described above 75% complete.
	P865/P2020/TS/055 Rev. 00 – Destination sign curtain film (specification under review).
Active Test Bulletins	
Blue Line (P865/P2020)	Inspection interval investigation (5K-7.5K), door open relay, high horn, solid state relay.
Red Line (A650 Base)	Chevron springs, DC-AC traction motor blower, GE gear unit.
A650 (Option)	Pinion shaft, emergency door seal, gearbox, tension rod assembly, air spring, vandal shield, rubber boots (retest), brushes, motor evaporator.
A650 (Option)	0 test in progress.
Gold Line (P2000 / P2550)	0 test in progress.
Active Modification Bulletins	
Blue Line (P865/P2020)	Watch gap, wheelchair, security cameras, battery disconnect decals, gearbox long breather tube, HSCB reset circuit, window sash.
Blue Line (P865/P2020)	FCC high voltage decal, remove trip switch wiring per car; remove trip switch wiring per truck, manual controller mod. by American Transit, front door latch, replace end door threshold plate, dead battery start, buss bar isol.
Green Line (P2000)	Master controller with/new cam profiles, removal of convex mirror head, spin/slide sanding mod.
Gold Line: (P2000)	Battery disconnect decals.
Active Technical Request Form	
Blue Line (P865/P2020)	Destination signs, journal bearing, air compressor motor, chopper intake, damper assembly, Knorr washer, motor alternator set CB1 tripping problem.
Red Line (A650 Option/Base)	ATO berthing, tension rod assembly, Flender gearbox, pinion shaft, coupler corrosion cover, gate drive power supply, location decal, rectifier, door latching relay, twist lug connector, thermistor & TLR circuit failures, Pas.
Red Line (A650 Option/Base)	Door operator assemble repair vendor, sanding system, air vent grille, exterior rear view mirror, sun shade gear latch, fleet technical assistance, EMI trip faults.
Gold Line (P2000/P2550)	Truck Trimming investigation, operator door assembly overhaul.



Rail Vehicle Engineering Project Summary

May 2010

Vehicle Acceptance Status		
39 cars at Metro	36 Cars Conditionally Accepted	11 Cars at Pittsburg Assembly Plant
Gold Line - 38 cars	Gold Line - 34 cars	
Blue Line - 1 car	Two cars in testing phase	
<ul style="list-style-type: none">1 car accepted this period2 cars are planned for acceptance in June (741 & 742).		
Project Management Activities		
Brake disc nut & bolt replacement program - Knorr technicians are on site retrofitting the reminder of the fleet and concurrently replacing the brake pads with new pads in final configuration (with reinforced backing plates). To date 31 cars have been retrofitted with new hardware and 27 cars have new brake pads on power trucks. The center trucks and the reminder of the fleet will be retrofitted as new brake pads are received. The work is on going.		
HVAC unit upgrade – Thermo-King technicians are on site to upgrade fleet HVAC systems. The work will be ongoing through June 2010. To date 21 cars have been retrofitted. The work is ongoing.		
Gateway Software upgrades - The new software revision 15 has been successfully installed on the fleet the weekend of 5/29-30/2010. Software change documentations and test results are approved. Final submittal from Italy is due within two weeks.		
Propulsion Software Upgrade - Rev 12 A addresses several issues (related to car wash mode, clock synchronization, EMI etc). Non regression and validation testing has been completed. AB submitted responses to Metro’s latest comments on the new revision and upon approval; fleet upgrade will be scheduled within the next two weeks.		
ATP/TWC Software upgrade - Phase two of the ATP/TWC software tests started last week, it is ongoing on car 741 & 742 and, will continue by AB/Ansaldo STS during the next week. Final Phase two software installation is projected for the end of June 2010.		

Rail Fleet Services QA-Warranty

May 2010

<i>Administration / ERS</i>
QA Preventive Maintenance Inspection (PMI) Audits are being conducted at every division with performance evaluation forwarded to upper management
Met with Inspector General (IG) to discuss MRL Maintenance's PMI audit rating
Parts Processing, Cost Avoidance Recovery Data, Video Surveillance Archives, Safety, Accident / Incident Files.
<i>Red Line QA / Warranty Specialist Projects</i>
PMI audits, warranty & parts inspections, FAIs
Oversight of T/M Mount & Truck Frame ongoing
Supporting RFS engineering with special projects.
➤ Recovered: \$5,103.92 Total Cost Avoidance (Labor \$1,537.92 - Parts \$3,566.00)
<i>Blue Line QA / Warranty Specialist Projects</i>
PMI audits, warranty & parts inspections, FAIs
Support RFS engineering with Expo Line Compatibility, USR modification testing, resolved system issues
Oversee equipment campaigns (Door Systems, Car Body, Lighting Systems, & Car interior Projects).
➤ Recovered: \$00,000.00 Total Cost Avoidance (Labor \$0.00 - Parts \$0.00)
<i>Green Line QA / Warranty Specialist Projects</i>
PMI audits, warranty & parts inspections, FAIs
Support RFS engineering with resolution of open issues with overhaul vendors & contractors
Support overhaul activities on vehicle systems e.g. doors, traction motors, gearbox & brakes.
➤ Recovered: \$548.00 Total Cost Avoidance (Labor \$63.00 - Parts \$485.00)
<i>Gold Line QA / Warranty Specialist Projects</i>
PMI audits, warranty & parts inspections, FAIs
Support P2550 Inspection and Acceptance Activities including on-site production inspections, pre/post vehicle inspections, review of car history book, burn-in and final acceptance.
➤ Recovered: \$00,000.00 Total Cost Avoidance (Labor \$0.00 - Parts \$0.00)

Rail Fleet Services Instruction

May 2010

Training classes completed during the month of May 2010

Description	Status	Start	End	Course Hours	Student Count	Training Hours
Blue Line Training - (865/2020 & P2000 LRV):						
EFFECTIVE MEETINGS	Complete	5/6/2010	5/6/2010	3	2	6
RFS SIEMENS 2000 AUX. INVERTER	Complete	5/20/2010	5/28/2010	24	6	144
RFS SIEMENS 2000 PANTOGRAPH	Complete	5/18/2010	5/19/2010	8	6	48
RFS SIEMENS 2000 DOOR CONTROLS	Complete	5/11/2010	5/14/2010	40	6	240
RFS SIEMENS 2000 COUPLER	Complete	5/7/2010	5/7/2010	8	6	48
RFS SIEMENS 2000 CARBODY	Complete	5/4/2010	5/6/2010	8	6	48
ANGER MANAGEMENT	Complete	5/6/2010	5/6/2010	3	1	3
MOP EAP AS A SUPERVISORY TOOL	Complete	5/18/2010	5/18/2010	1.5	1	1.5
Working Safely With Power Tools (Video)	Complete	5/15/2010	5/15/2010	2	1	2
PRE-SUPERVISORY TRAINING	Complete	5/19/2010	5/27/2010	14	1	14
ADVANCED WRITING - PART 2	Complete	5/13/2010	5/13/2010	3	1	3

Total Blue Line Training (Hours): 557.5

Red Line Training (Breda A650 HRV):						
RAIL SYSTEM SAFETY	Complete	5/11/2010	5/18/2010	3	58	174
BLOODBORNE PATHOGENS	Complete	5/26/2010	5/30/2010	2	2	4
RFS BRED A650 F.B. ELECTRONICS	Complete	5/13/2010	5/21/2010	40	1	40
RFS BRED A650 FRICTION BRAKES	Complete	5/5/2010	5/12/2010	40	1	40
RFS BRED A650 PROPULSION GE	Complete	4/27/2010	5/4/2010	8	1	8
RFS BRED A650 HVAC	Not Complete	5/25/2010		32	1	32
ADULT CPR/AED	Complete	5/14/2010	5/14/2010	5	3	15
ETD PUBLIC SPEAKING	Complete	5/18/2010	5/18/2010	3	1	3
DISABILITIES AWARENESS TRAINING	Complete	5/27/2010	5/27/2010	2	1	2
BASIC GRAMMAR	Complete	5/11/2010	5/11/2010	3	1	3

Total Red Line Training (Hours): 321

Green Line Training (P2000 LRVs):						
RAIL SYSTEM SAFETY	Complete	5/20/2010	5/21/2010	3	21	63
RFS SIEMENS 2000 AUX. INVERTER	Complete	5/20/2010	5/28/2010	24	2	48
RFS SIEMENS 2000 PANTOGRAPH	Complete	5/18/2010	5/19/2010	8	2	16
RFS SIEMENS 2000 DOOR CONTROLS	Complete	5/11/2010	5/14/2010	40	2	80
RFS SIEMENS 2000 COUPLER	Complete	5/7/2010	5/7/2010	8	2	16
RFS SIEMENS 2000 CARBODY	Complete	5/4/2010	5/6/2010	8	2	16
WAYSIDE WORKER PROTECTION	Complete	5/5/2010	5/6/2010	4	6	24
ADULT CPR/AED	Complete	5/12/2010	5/12/2010	5	1	5
MANAGING LEAVES OF ABSENCE	Complete	5/19/2010	5/19/2010	3	1	3

Total Green Line Training (Hours): 271

Gold Line Training (P2550 LRVs):						
MANAGING LEAVES OF ABSENCE	Complete	5/19/2010	5/19/2010	3	1	3
RFS ANSALDOBREDA 2550 PROPULSION	Complete	5/10/2010	5/14/2010	56	4	224
RFS ANSALDOBREDA 2550 COUPLER	Complete	5/5/2010	5/7/2010	8	4	32
RFS ANSALDOBREDA 2550 LIGHTING	Complete	5/3/2010	5/4/2010	4	4	16
POWERPOINT 2003 - INTERMEDIATE	Complete	5/19/2010	5/19/2010	3.5	2	7
DIRECT DEPOSIT SELF SERVICE TRAINING	Complete	5/20/2010	5/20/2010	0.75	1	0.75

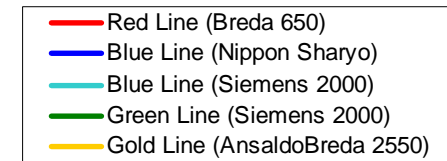
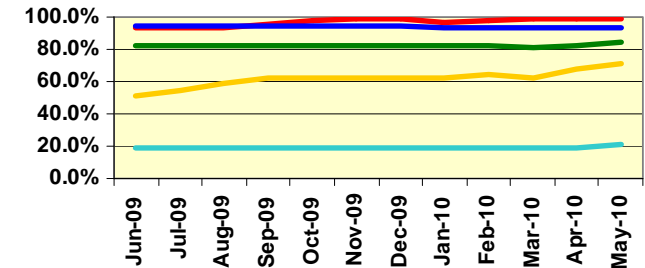
Total Gold Line Training (Hours): 282.75

Total Rail Fleet Services Instruction for the month of May 2010 (Hours): 1,432.3

Core Vehicle Training Completed:

	<u>BLUE</u>	<u>RED</u>	<u>GREEN</u>	<u>GOLD</u>
Percentage of core vehicle training complete:	92.9%	98.9%	83.9%	71.0%
Siemens 2000 training complete:	20.6%	N/A	N/A	N/A
Average Specialist Rail Experience Level in Years:	10.7	10.5	7.6	8.7

Core Training Completed



Variations caused by new hires, employee transfers, & training completed