



Rail Fleet Services Monthly Report October 2010



Metro

Table of Contents

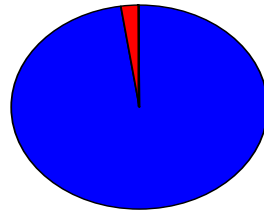
• Safety	
– Industrial Injuries	Page 1
– Rail Vehicle Accidents & Major Incidents	Page 2
• Customer Service	
– Service Delivery – AM/PM Pull-Outs	Page 3
– Vehicle Utilization – Blue Line & Green Line	Page 4
– Vehicle Utilization – Red Line & Gold Line	Page 5
– Mean Miles Between Failures (Major)	Page 6
– Repeat Failures (Major)	Page 7
• Business Processes	
– Reported Incidents	Page 8
– Preventative Maintenance Compliance	Page 9
• Finance	
– Vandalism & Graffiti Costs	Page 10
– Graffiti Pictures	Page 11
– Material & Labor Costs	Page 12
– Cost per mile	Page 13
– Absence vs. Overtime	Page 14
• Engineering	
– Rail Vehicle Engineering Project Summary	Page 15
– P2550 Vehicle Acceptance Program	Page 16
• Quality Assurance	
– Warranty Program Projects Summary	Page 17
• Growth	
– Rail Fleet Service Training	Page 18

Industrial Injuries – Lost Work Hours

October 2010

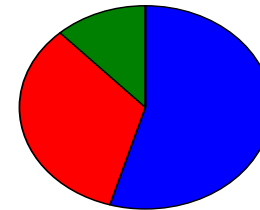
	Nov-09	Dec-09	Jan-10	Feb-10	Mar-10	Apr-10	May-10	Jun-10	Jul-10	Aug-10	Sep-10	Oct-10	Year to Date
Blue Line	288	200	176	160	264	256	328	424	496	472	352	352	3,768
Red Line	356	352	352	200	176	176	280	168	176	80	0	8	2,324
Green Line	8	136	168	168	136	16	3	0	56	128	0	0	819
Gold Line	0	8	0	0	0	0	0	0	0	0	0	0	8
Totals	652	696	696	528	576	448	611	592	728	680	352	360	6,919

October 2010 - Lost Work Hours



■ Blue Line ■ Red Line ■ Green Line ■ Gold Line

Year-to-Date Lost Work Hours



■ Blue Line ■ Red Line ■ Green Line ■ Gold Line

	Employees		October 2010 Lost Work Hours			
	Assigned	Active	Service Attendant	Maint. Specialist	Body Repairer /Painter	October 2010 Total Hrs.
Blue Line	109	105	0	184	168	352
Red Line	104	103	8	0	0	8
Green Line	48	45	0	0	0	0
Gold Line	50	49	0	0	0	0
Totals	311	302	8	184	168	360
Total Lost Work Hours for 12-months = 360 hours						

Rail Vehicle Accidents & Major Incidents

October 2010

Repair Costs	Nov-09	Dec-09	Jan-10	Feb-10	Mar-10	Apr-10	May-10	Jun-10	Jul-10	Aug-10	Sep-10	Oct-10	Totals
Blue Line	\$38,396	\$656	\$39,034	\$5,600	\$11,305	\$2,100	\$5,705	\$2,050	\$36,498	\$50,124	\$916	\$4,781	\$197,165
Red Line	\$0	\$0	\$0	\$0	\$0	\$0	\$0	\$0	\$0	\$0	\$0	\$0	\$0
Green Line	\$0	\$0	\$0	\$0	\$0	\$0	\$4,799	\$0	\$0	\$0	\$0	\$0	\$4,799
Gold Line	\$3,538	\$0	\$17,028	\$4,404	\$0	\$0	\$3,523	\$0	\$653	\$0	\$441	\$4,286	\$33,873
Totals	\$41,934	\$656	\$56,062	\$10,004	\$11,305	\$2,100	\$14,027	\$2,050	\$37,151	\$50,124	\$1,357	\$9,067	\$235,837

Rail Vehicle Accident Costs - October 2010				
Metro Blue Main Line				
2010	Incident #	Problem code	Incident Description	Cost
10/12/10	1838558	(10-71) Train vs. Object	Train operator reported that he struck a shopping cart at Greenleaf grade crossing (LRV 145A), Track 2.	\$0.00
				\$0.00
2010	Incident #	Problem code	Incident Description	Cost
10/26/10	185663	(10-73) Train vs. Vehicle	Train 7 (103A) was involved in a 10-73 at Washington and Trinity southbound on Track 2.	\$4,781.00
				\$4781.00
TOTAL FOR METRO BLUE LINE				\$4781.00
Metro Blue Line				
2010	Incident #	Problem code	Incident Description	Cost
9/28/10	1817136	(10-73) Train vs. Vehicle	Train 2 (728-742) was involved in a hit and run on Track 2 departing from Maravilla Station.	\$4,286.00
TOTAL FOR METRO GOLD LINE				\$4,286.00
Metro Red Main Line				
2010	Incident #	Problem code	Incident Description	Cost
10/19/10	1847696	(10-72) Train vs. Pedestrian	Train 37 was involved in a 10-72 involving a patron who jumped in front of the train at Hollywood/Vine location.	\$0.00
TOTAL FOR METRO RED LINE				\$0.00
GRAND TOTAL				\$9,067.00
(10-71) = Train vs. Object, (10-72) = Train vs. Pedestrian, (10-73) = Train vs. Vehicle (10-74) = Train vs. MTA Vehicle, (10-75) = Derailment				

Service Delivery – AM/PM Pull-Outs October 2010

Cars Available for AM/PM Pull-Outs

Blue Line – Fleet Size 69 cars

- Weekday pull-out: 60 cars
- Weekend pull-out: 36 cars
- **Monthly Mileage: 418,077 miles**

Red Line - Fleet Size 104 cars

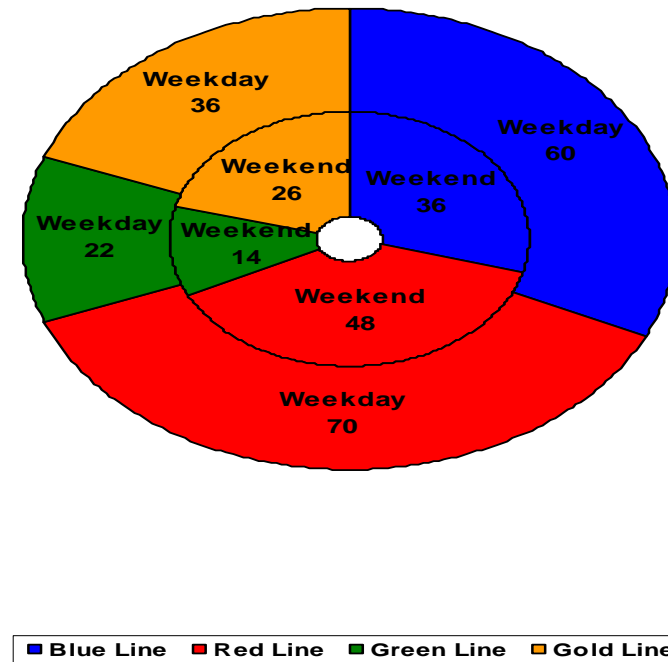
- Weekday pull-out: 70 cars
- Weekend pull-out: 48 cars
- **Monthly Mileage: 536,104 miles**

Green Line – Fleet Size 29 cars

- Weekday pull-out: 22 cars
- Weekend pull-out: 14 cars
- **Monthly Mileage: 219,119 miles**

Gold Line – Fleet Size 52 cars

- Weekday pull-out: 36 cars
- Weekend pull-out: 26 cars
- **Monthly Mileage: 226,641 miles**

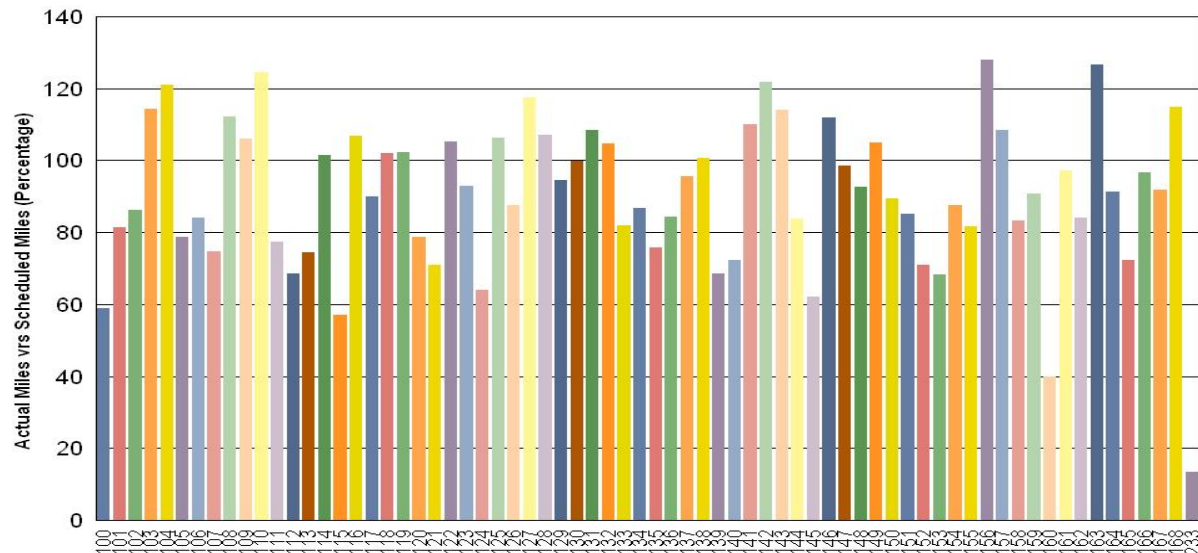


Vehicle Utilization October 2010

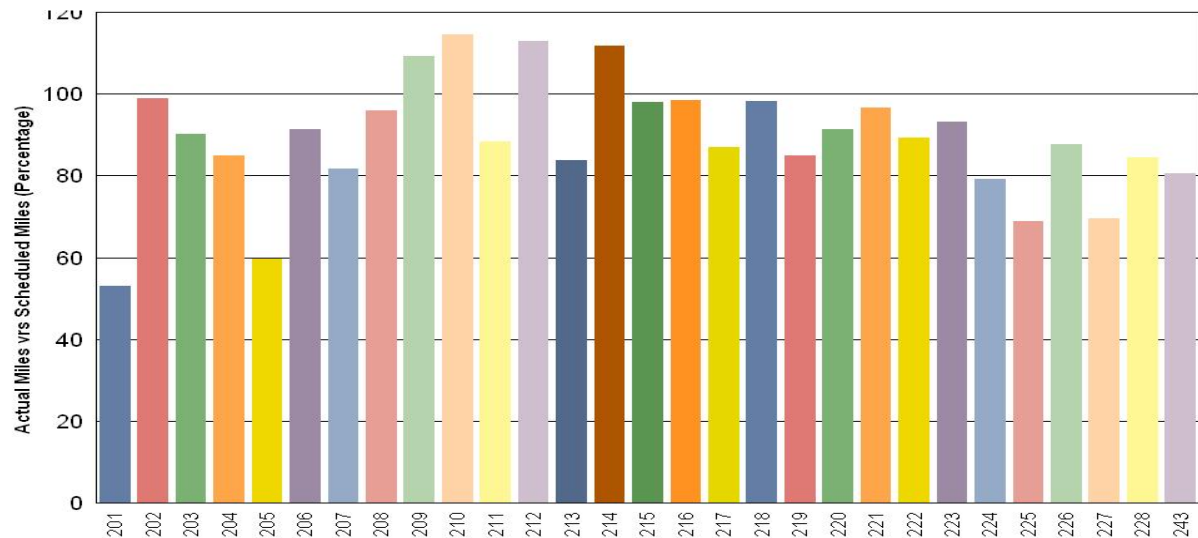
Metro Blue Line

Blue Line – Car 233, a P2000 vehicle, is being refurbished for the Expo line and is not in revenue service. Vehicle is not scheduled for revenue service until late 2011.

Note: Percentage includes an average 4% mileage deduction for Yard mileage and Vehicle Testing.



Green Line – The fleet has met the daily maximum utilization requirement for the month of September.



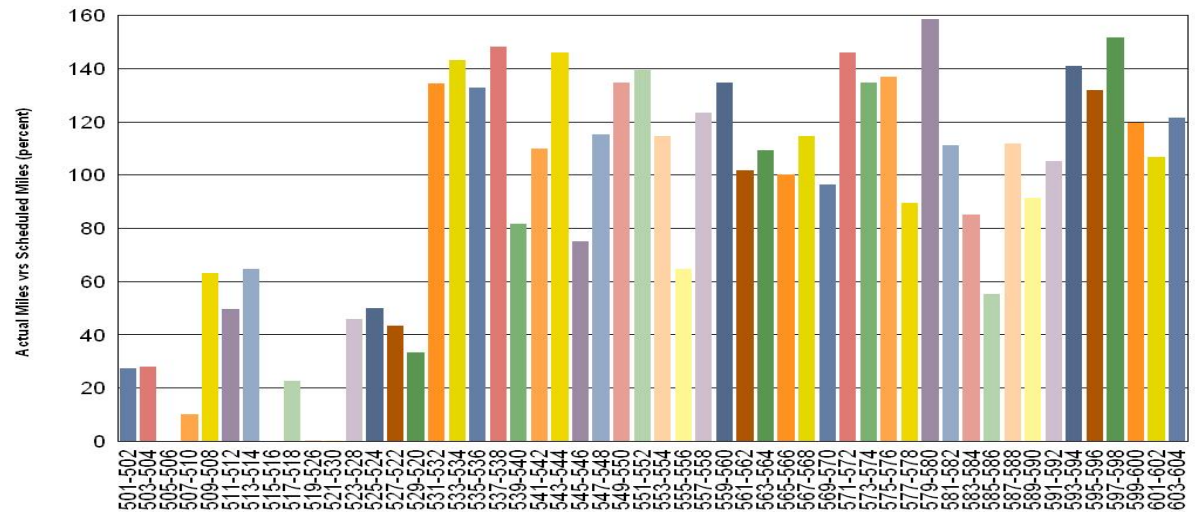
Vehicle Utilization October 2010

Red Line – Vehicles 501-502, 503-504, 505-506, 507-510, 515-516, 517-518, & 521-530 are flagged as low vehicle utilization due to Base-Buy fleet having propulsion and brake problems.

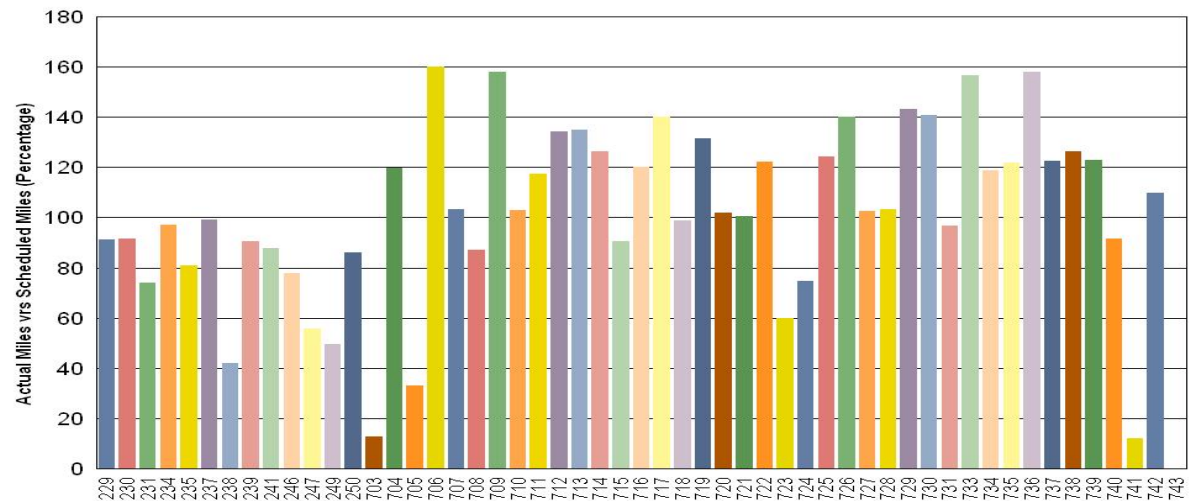
Percentage includes an average 4% mileage deduction for Yard mileage and Vehicle Testing.

Gold Line – Vehicle 703 was recently accepted (10/20) resulting in minimal usage. Vehicle 741 was out of service from 9/29 to 10/27 and awaiting material delivery. Car 743 is at the Blue Line and it is not in service.

Metro Red Line



Metro Gold Line



Mean Miles Between Failures (Major) October 2010

Miles Between Major Failures

Blue Line: 29,863 (14 Major Failures)

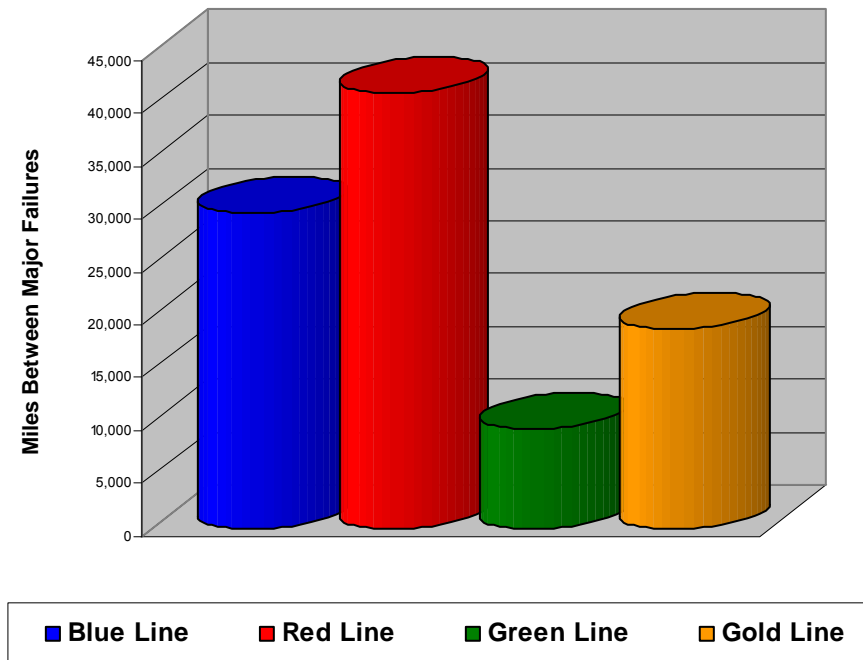
Red Line: 41,239 miles (13 Major Failures)

Green Line: 9,527 miles (23 Major Failures)

Gold Line: 18,887 miles (12 Major Failures)

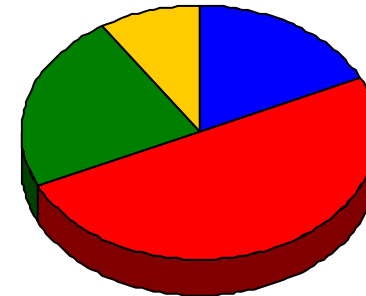
Siemens P2000 14,002 miles (3 Major Failures)

AnsaldoBreda P2550 20,515 miles (9 Major Failures)



Repeat Failures (Major) October 2010

Metro Blue Line: 4 Repeat Failures
Metro Red Line: 11 Repeat Failures
Metro Green Line: 5 Repeat Failures
Metro Gold Line: 2 Repeat Failures



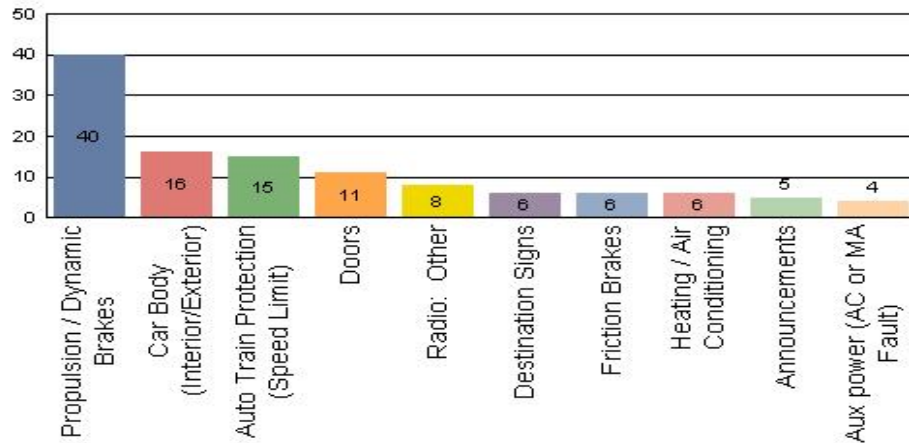
■ Blue Line ■ Red Line ■ Green Line ■ Gold Line

Repeater Car Details - October 2010								
System	Blue Line		Red Line		Green Line		Gold Line	
	Car #	Repeats	Car #	Repeats	Car #	Repeats	Car #	Repeats
Automated Train Protection	124	1			218	1		
Car Body								
Communication			567	2				
Doors					213	1		
Friction Brakes			553	1			249	2
			564	1				
			599	2				
HVAC			557	1				
Propulsion/Dynamic Brake	107	2	501	1	202	1		
	111	1	520	1	205	2		
			536	1				
			581	1				
TOTALS	4		11		5		2	

Reported Incidents October 2010

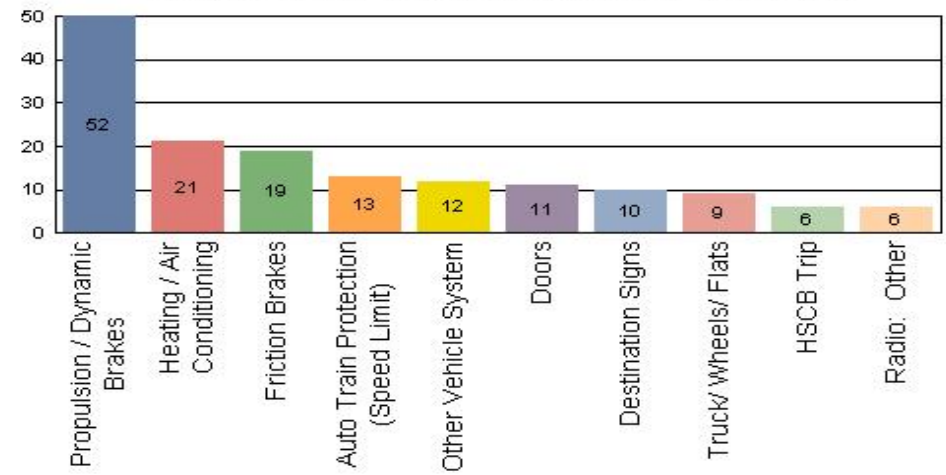
Metro Blue Line

Count of the Top 10 Incident Problems



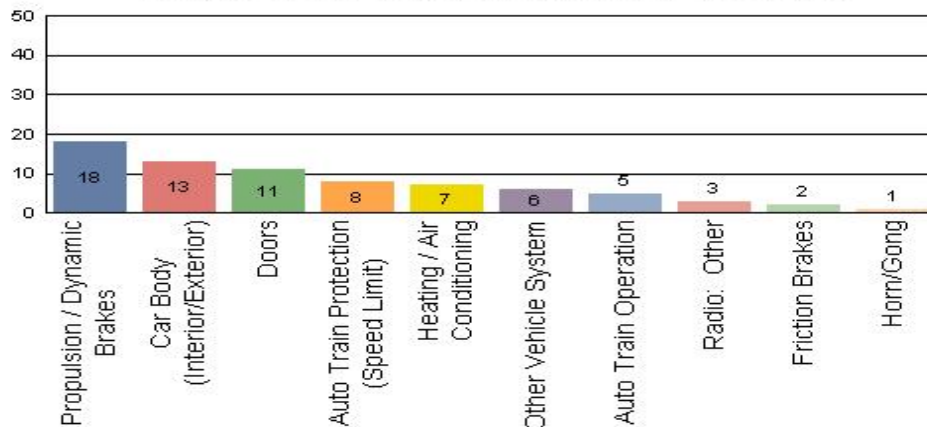
Metro Red Line

Count of the Top 10 Incident Problems



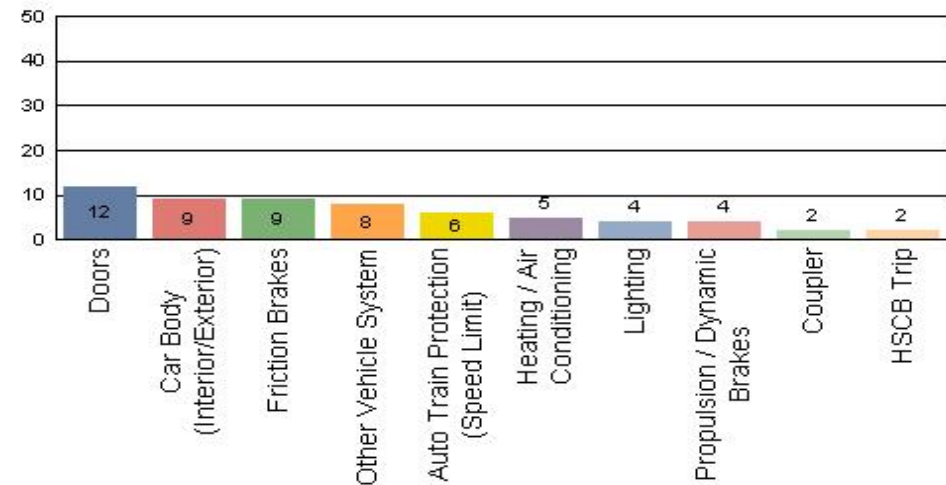
Metro Green Line

Count of the Top 10 Incident Problems



Metro Gold Line

Count of the Top 10 Incident Problems



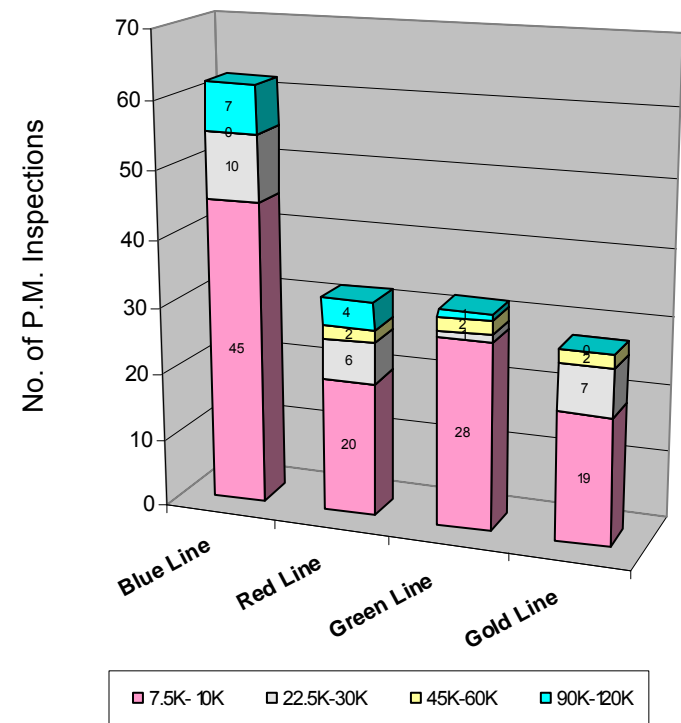
Preventative Maintenance Compliance

October 2010

Averages	Oct-09	Nov-09	Dec-09	Jan-10	Feb-10	Mar-10	Apr-10	May-10	Jun-10	Jul-10	Aug-10	Sep-10	Oct-10
Blue Line	100%	100%	100%	100%	100%	100%	100%	100%	100%	100%	100%	100%	100%
Red Line	100%	100%	100%	100%	100%	100%	100%	100%	100%	100%	100%	100%	100%
Green Line	100%	100%	100%	100%	100%	100%	100%	100%	100%	100%	100%	100%	100%
Gold Line	100%	100%	100%	100%	100%	100%	100%	100%	100%	100%	100%	100%	100%

October 2010 Preventative Maintenance Inspections

No. of P.M. Inspections	7.5K-10K	22.5K-30K	45K-60K	90K-120K	Totals	% Compliance
Blue Line	45	10	0	7	62	100%
Red Line	20	6	2	4	32	100%
Green Line	28	1	2	1	32	100%
Gold Line	19	7	2	0	28	100%
Totals:	112	24	6	12	154	100%

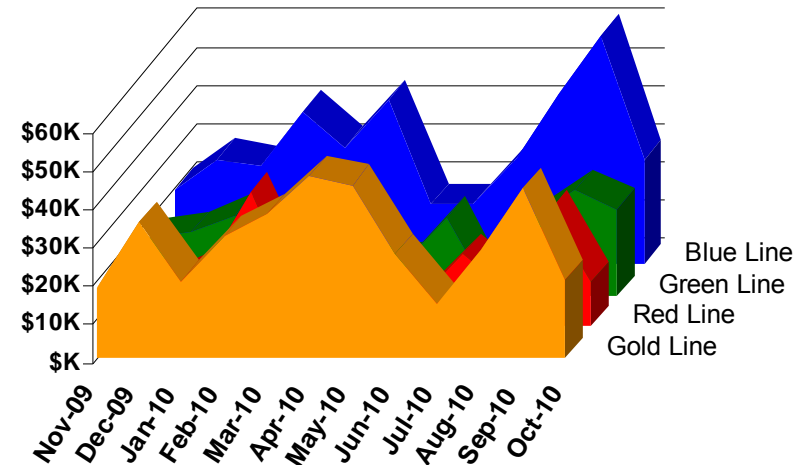


Vandalism & Graffiti Report

October 2010

	Nov-09	Dec-09	Jan-10	Feb-10	Mar-10	Apr-10	May-10	Jun-10	Jul-10	Aug-10	Sep-10	Oct-10	Year-to-Date
Blue Line	\$19,757	\$27,409	\$25,519	\$40,085	\$30,557	\$42,951	\$15,825	\$15,888	\$27,868	\$41,374	\$59,922	\$27,302	\$374,458
Green Line	\$14,915	\$16,393	\$20,985	\$35,216	\$20,933	\$7,585	\$8,615	\$20,555	\$0	\$20,226	\$27,624	\$22,632	\$215,679
Red Line	\$14,334	\$11,227	\$15,838	\$13,809	\$11,162	\$12,115	\$11,001	\$7,715	\$18,777	\$9,737	\$30,147	\$11,719	\$167,581
Gold Line	\$17,992	\$35,479	\$19,892	\$31,808	\$37,462	\$47,526	\$45,114	\$27,086	\$14,117	\$27,962	\$44,191	\$20,368	\$368,998
Totals	\$66,998	\$90,508	\$82,234	\$120,918	\$100,114	\$110,177	\$80,555	\$71,244	\$60,762	\$99,299	\$161,883	\$82,022	\$1,126,715

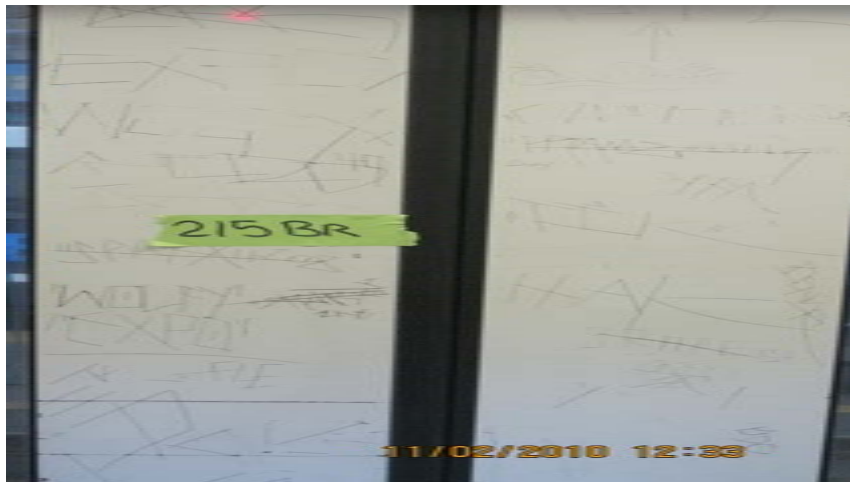
October 2010 Vandalism & Graffiti - All Rail				
	Qty	Labor	Materials	Totals
Windows replaced	39	\$4,662	\$5,553	\$ 10,215
Vandal Shields	599	\$17,435	\$6,510	\$ 23,945
Seats Cleaned	811	\$2,282	\$67	\$ 2,349
Seats Replaced	160	\$5,040	\$6,132	\$ 11,172
Ext/Int Repairs	240	\$15,120	\$693	\$ 15,813
Totals for October 2010		\$62,369	\$19,653	\$ 82,022



Graffiti Pictures October 2010



A - Metro Blue Line



B - Metro Green Line



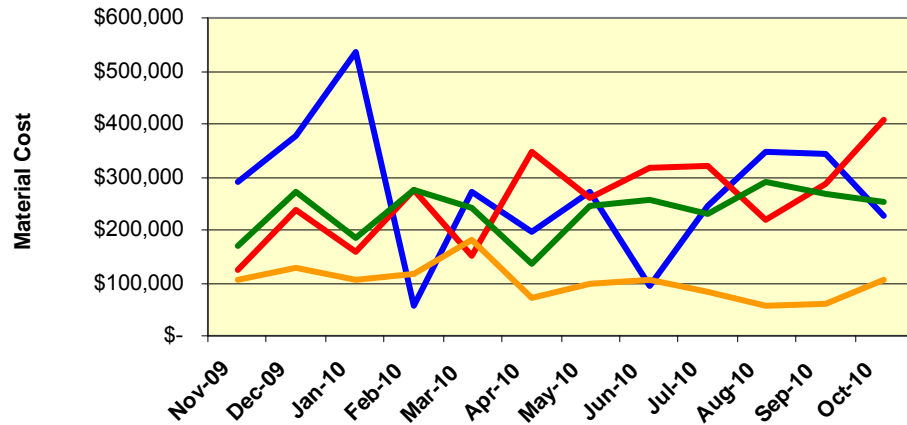
C - Metro Gold Line

Material and Labor Costs

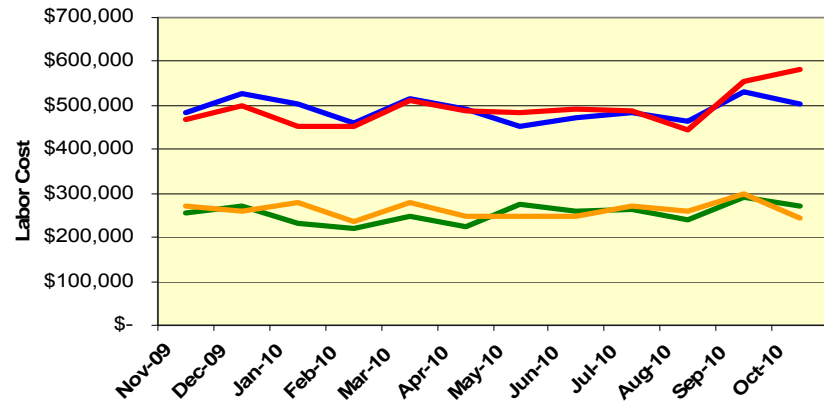
October 2010

MATERIALS	Nov-09	Dec-09	Jan-10	Feb-10	Mar-10	Apr-10	May-10	Jun-10	Jul-10	Aug-10	Sep-10	Oct-10	Totals
Blue Line	\$ 290,113	\$ 375,541	\$ 535,717	\$ 57,633	\$ 270,743	\$ 197,253	\$ 272,347	\$ 94,924	\$ 245,000	\$ 347,681	\$ 341,681	\$ 225,412	\$ 3,254,045
Red Line	\$ 123,484	\$ 238,738	\$ 157,351	\$ 275,856	\$ 149,720	\$ 348,088	\$ 258,558	\$ 317,139	\$ 321,375	\$ 219,030	\$ 285,906	\$ 406,465	\$ 3,101,710
Green Line	\$ 168,715	\$ 272,871	\$ 184,149	\$ 276,116	\$ 240,194	\$ 136,768	\$ 244,408	\$ 256,000	\$ 231,296	\$ 291,938	\$ 267,489	\$ 253,619	\$ 2,823,563
Gold Line	\$ 106,126	\$ 128,297	\$ 105,109	\$ 117,356	\$ 179,658	\$ 72,343	\$ 98,102	\$ 105,801	\$ 81,897	\$ 57,693	\$ 61,673	\$ 104,711	\$ 1,218,766
Totals	\$ 688,438	\$ 1,015,447	\$ 982,326	\$ 726,961	\$ 840,315	\$ 754,453	\$ 873,415	\$ 773,864	\$ 879,567	\$ 916,342	\$ 956,749	\$ 990,206	\$ 8,451,129

Material Costs



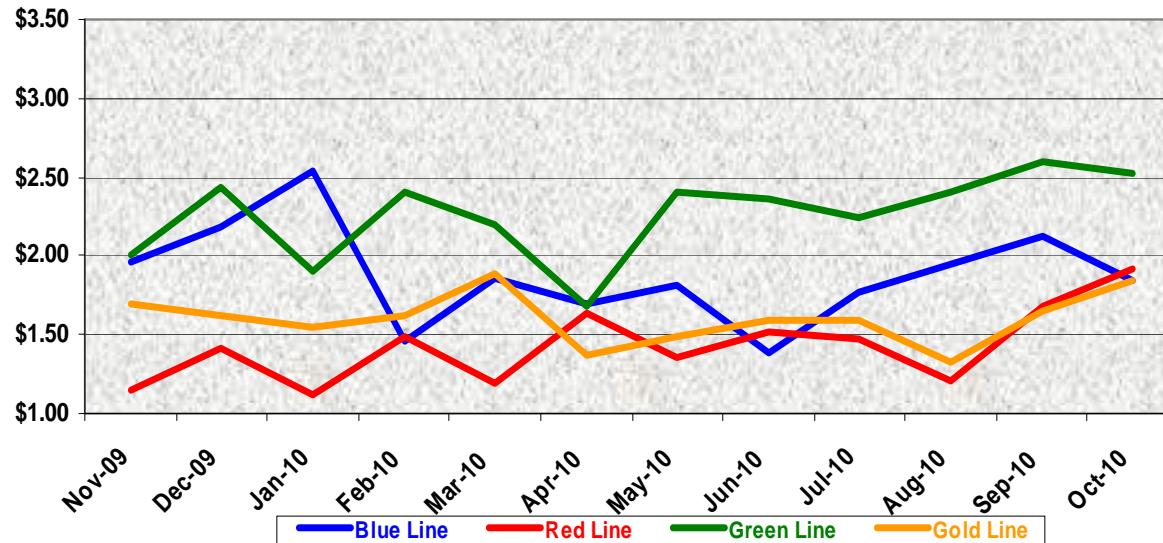
Labor Costs



LABOR	Nov-09	Dec-09	Jan-10	Feb-10	Mar-10	Apr-10	May-10	Jun-10	Jul-10	Aug-10	Sep-10	Oct-10
Blue Line	\$ 483,394	\$ 527,760	\$ 505,239	\$ 458,335	\$ 515,305	\$ 492,862	\$ 451,979	\$ 472,293	\$ 484,536	\$ 462,218	\$ 529,087	\$ 504,876
Red Line	\$ 468,331	\$ 498,786	\$ 453,571	\$ 453,580	\$ 510,664	\$ 487,627	\$ 482,974	\$ 492,936	\$ 487,742	\$ 442,482	\$ 555,982	\$ 581,709
Green Line	\$ 256,078	\$ 269,668	\$ 231,918	\$ 218,637	\$ 248,224	\$ 225,004	\$ 276,665	\$ 258,297	\$ 262,563	\$ 241,807	\$ 291,569	\$ 269,647
Gold Line	\$ 271,694	\$ 259,793	\$ 278,537	\$ 237,594	\$ 279,935	\$ 247,135	\$ 247,474	\$ 247,000	\$ 271,885	\$ 257,900	\$ 299,833	\$ 245,423
Totals	\$ 1,479,498	\$ 1,556,008	\$ 1,469,265	\$ 1,368,146	\$ 1,554,128	\$ 1,452,628	\$ 1,459,092	\$ 1,470,526	\$ 1,506,727	\$ 1,404,407	\$ 1,676,471	\$ 1,601,654

Cost Per Mile October 2010

Cost per mile:	Nov-09	Dec-09	Jan-10	Feb-10	Mar-10	Apr-10	May-10	Jun-10	Jul-10	Aug-10	Sep-10	Oct-10	Average
Blue Line	\$1.96	\$2.18	\$2.53	\$1.45	\$1.85	\$1.69	\$1.82	\$1.39	\$1.77	\$1.95	\$2.13	\$1.85	\$1.88
Red Line	\$1.15	\$1.42	\$1.13	\$1.48	\$1.19	\$1.64	\$1.36	\$1.51	\$1.48	\$1.21	\$1.67	\$1.91	\$1.43
Green Line	\$2.01	\$2.43	\$1.91	\$2.41	\$2.20	\$1.67	\$2.41	\$2.36	\$2.24	\$2.40	\$2.60	\$2.53	\$2.26
Gold Line	\$1.69	\$1.62	\$1.55	\$1.62	\$1.89	\$1.37	\$1.49	\$1.59	\$1.59	\$1.33	\$1.65	\$1.85	\$1.60



No facility costs are included

Absences vs. Overtime

October 2010

ABSENCE TYPE and HOURS	3940	3941	3942	3943	3944	Total
BER-BEREAVEMENT		24	80	24	24	152
CTO-COMPENSATORY TIME OFF	8	171	300	201	148	828
CVA - CASUAL VACATION	40		947	4	184	1,175
DSL-DISABILITY LEAVE/LONG		168	72			240
EFH-EMG. FLOAT HOL.		32	56	16	24	128
ETO-EXCUSED TIME OFF	2	26	11	5	24	67
FML-FAMILY CARE LEAVE		356	144	399	160	1,059
HLF-HOLIDAY FLOATING	24	216	300	104	160	804
II-INDUSTRIAL INJURY		352	8			360
JUR-JURY DUTY		8	8	8		24
LC1-LABOR CODE 233	16	160	291	72	104	643
OWP-OFF WITH PERMISSION					8	8
RTO-REQUESTED TIME OFF-NO PAY		16	8	8		32
SCK-SICK PAY	8	188	235	48	108	587
SCW-SICK WITHOUT PAY		12	33	184	160	389
SPN-SCHOOL PARTNER NOT PAID		4				4
SUP-TEMPORARY SUPERVISOR		269	211	170	170	819
VAC-VACATION	40	604	156	264	236	1,300
Total Absence Hours	138	2,605	2,859	1,507	1,509	8,617
Number of Work Force (assigned)	20	109	104	48	50	331
Full Work Force hours/month	3,466	18,890	18,023	8,318	8,665	57,362
Absence as a % of Work Force	4%	14%	16%	18%	17%	15%
OVERTIME TYPE and HOURS	3940	3941	3942	3943	3944	Total
CTB-COMPENSATORY TIME TO BANK	10	207	290	127	81	715
OTP-PREM OVERTIME	296	602	1700	1165	819	4582
WLO-Worked Lunch Overtime	0	21	56	31	58	165
Total	306	830	2045	1323	958	5461
Overtime as a % of Work Force	9%	4%	11%	16%	11%	10%
UNCOVERED ABSENCES	3940	3941	3942	3943	3944	Total
Absences FTE	1	15	16	9	9	50
OTP FTE	2	5	12	8	6	32
FTE Difference	-1	10	5	1	3	18

Rail Vehicle Engineering Project Summary

October 2010

Major Projects	
A650 Refurbishment Expo Readiness P865/P2000 Fleets P2000 Signal Package Conversion Protran Worker Protection Device	
P2000 Component Overhaul P2550 Vehicle Acceptance P3010 Vehicle Acquisition MBL Overhaul	
Technical Specifications	
MBL, MGL, MRL, MGDL (all fleets):	A650/P2000/P865 Gearbox Overhauls P2000 Axle Assembly, P865/P2020 Axle Assembly Red Line/P2000 Journal Bearing Overhauls P2000 HVAC Suttrak Units Overhaul Chevron Springs P2000 Slew Ring Service Contract P2000 Slew Ring Removal Red Line Wheels Lab Failure Systra Contract for Expo Fleet Red Line Air Springs.
Active Test Bulletins	
MBL (P865/P2020):	Inspection interval investigation (5K-7.5K) Door capacitor Raise Motor Alternator Trip Setting Replace GRS/TWC with H&K TWC Moisture Eliminator Gutter-Chopper Solid State Flashing Circuit Horn
MRL (A650 Base):	Chevron springs DC-AC traction motor blower GE gear unit Blower Unit (L) Coupler Shield
MRL (A650 Option):	Pinion shaft Emergency door seal Gearbox Air spring Vandal shield Rubber boots (retest) Brushes Motor evaporator
MGL (P2000):	Door operator assembly
Active Modification Bulletins	
MBL (P865/P2020):	Watch gap, Wheelchair, Security cameras Battery disconnect decals Gearbox long breather tube
MBL (P2000):	Add TWC route select feature No acceleration during ATP Overspeed
MRL (A650 Option/Base):	FCC high voltage decal Remove trip switch wiring Manual controller modification by American Transit Front door latch Replace end door threshold plate Dead battery start Buss bar isolation ATO overspeed brake rate
MGL (P2000):	Master controller with new cam profiles Removal of convex mirror head Spin/slide sanding modification Protran 1 Wayside Worker Protection
MGDL (P2000):	Battery disconnect decals
Active Technical Request Form	
MBL (P865/P2020):	Destination signs Journal bearing Air compressor motor Chopper intake Damper assembly Knorr washer Motor alternator set CB1 tripping problem
MRL (A650 Option/Base):	ATO berthing Flender gearbox Pinion shaft Coupler corrosion cover Gate drive power supply Location decal Rectifier Door latching relay Twist lug connector Thermistor & TLR circuit failures PA system & air whistle/horn faults Safety Cable Hand Assistance Strap Contact Adhesive Flooring H-4 Glass Blower motor impeller Bearing Grease
MGL (P2000):	Door operator assemble repair vendor Sanding system Air vent grille Exterior rear view mirror Sun shade gear latch Car 201 technical assistance EMI trip faults HVAC motor Sunshade Gear Latch
MGDL (P2000/P2550):	Truck tramming investigation Operator door assembly overhaul Diver cab window glass

P2550 Vehicle Acceptance Program

October 2010

Vehicle Status Update:

- 42 cars at Metro
- A total of 40 Cars Conditionally Accepted (CA)
- 8 Cars at Pittsburgh Assembly Plant

Engineering Activities Update:

- Event recorder – AB software engineer scheduled to arrive MGD L on Nov. 8th to lead resolve & qualify the system. The work is ongoing.
- ATP/TWC 250 & 100 Hz nuisance faults – field test completed with anticipated Software 3.1 release for fleet installation weekend of November 5th.
- Clock and diagnostic issues are also upgraded with Software 3.1 release.
- Traction Motor HV Junction Box – Twenty (20) pieces have been manufactured and shipped; to date 5 trains have been outfitted.
- Brake Caliper Overhaul – Knorr has performed inspection of the first two car sets of calipers and see no unusual wear characteristics on these units. Based on this inspection, Knorr sees no reason why the calipers cannot be used until they reach 6 years of live and less than 5 years of service. Caliper use time is extended by 1 year. Overhaul is ongoing.

Production Car Status – Pittsburgh:

- Car 745 - 92% final testing in progress
- Car 746 - 95% complete, trucks installed
- Cars 747, 748, 749, 750 - 25 to 80% complete. Assembly in process.
- Cars 701, 702 – Re-configuration of car in progress, rewiring and repining of cables 95% complete.

Project Management:

- Car 703 CA in October
- Contract spares are being process and delivered to Metro
- Daily and weekly meetings with AB Project Management to solve revenue service issues.

Revenue Service Summary:

- 2.6 Million Miles, 165,794 miles in the month of October
- 5 mainline incidents.

QA-Warranty Program Projects Summary

October 2010

ADMINISTRATION / ERS ACTIVITIES

- QA in the process of procuring Ultrasonic - Phased Array Flaw Detector(s) in order expand NDT metal detection.
- QA Audit Program – On going, Divisions have shown much improved results.
- P2550 Contract Programs- On track. QA overseeing remaining cars to be delivered.
- Special Projects & Technical Assist Programs, RWES' continue to assist both Engineering & Maintenance in providing corrective action in vehicle problem areas.
- The ERS' are implementing respective division equipment records into Spears M3 System and monitoring warranty & cost avoidance records.
- They also continue to provide close administrative support for RFS Maintenance, manage data and archive in the QA-Warranty Share Drive.

RED LINE ACTIVITIES

- QA provided oversight lead for wheel failure UT testing campaign and submitted findings reports.
- Oversight on T/M Mounts & Truck Frames, ABI weld repair project continues.
- Support engineering and RFS on Compressor Motors, T/M Bearings, Inverters, Oscillators & Coupler Cables.
- Process 32 Warranty Parts, 16 R&R Parts, Cost avoidance savings labor & parts = \$42,836.00

BLUE LINE ACTIVITIES

- Support engineering in testing EXPO Line TWC modification and braking issues
- Oversee equipment overhaul campaigns (Door Systems, Car Body, Lighting Systems, & Car interior Projects)
- Tech assist, draft Technical Procedures for RFSTS, also generate equipment Power-Point-Presentations
- Preparing procedures for overhaul campaigns and conduct FAI & parts inspections
- Processed 35 R&R.

GREEN LINE ACTIVITIES

- Support Engineering with on open issues (Circuit Relay, car ventilating, and slew rings, inverters, T/Ms).
- Continue close support with vendors & Contractors (Doors, Traction Motors, Gearboxes & Brake Systems).
- Prepared Technical Reports & Power-Point-Presentations and conduct FAI & parts inspections.
- Processed 484 R&R.

GOLD LINE ACTIVITIES

- Oversee P2550 project acceptance and warranty program.
- Travel to Pittsburgh, California to monitor car build and help resolve open issues
- Maintain project documentation, contract deliverables & maintenance records.
- Support ABI & RFSTS Engineering with Car Acceptance test issues.
- Processed 39 R&R & Warranty Parts, Cost avoidance savings labor & parts = \$ 82,351.74

Rail Fleet Services Instruction

October 2010

Training classes completed during the month of October 2010

Description	Status	Start	End	Course Hours	Student Count	Training Hours
<u>Blue Line Training - (865/2020 & P2000 LRV):</u>						
SEXUAL HARASSMENT PREVENTION & TITLE VII	Complete	10/6/2010	10/6/2010	2	4	8
GOVERNMENT EMERGENCY TELECOMMUNICATIONS SYSTEM (GETS)	Complete	10/28/2010	10/28/2010	0.5	2	1
DRUG AND ALCOHOL REASONABLE SUSPICION DETERMINATION	Complete	10/27/2010	10/27/2010	4	1	4
Back Safety (Video)	Complete	10/19/2010	10/19/2010	2	1	2

Total Blue Line Training (Hours): 15

Red Line Training (Breda A650 HRV):

DRUG AND ALCOHOL REASONABLE SUSPICION DETERMINATION	Complete	10/27/2010	10/27/2010	4	2	8
MICROSOFT WINDOWS XP - BEGINNER	Complete	10/7/2010	10/7/2010	3	1	3
ANGER MANAGEMENT	Complete	10/6/2010	10/6/2010	3	2	6
RAIL SYSTEM SAFETY	Complete	10/13/2010	10/13/2010	3	2	6
STORAGE OF FLAMMABLE AND COMBUSTIBLE LIQUIDS	Complete	10/28/2010	10/28/2010	1	2	2
HAZARD COMMUNICATION: IDENTIFYING THE DANGERS	Complete	10/20/2010	10/21/2010	2	2	4
FALL PROTECTION	Complete	10/20/2010	10/21/2010	2	2	4
PERSONAL PROTECTIVE EQUIPMENT	Complete	10/19/2010	10/19/2010	2	2	4
SAFETY ORIENTATION: ON ALERT	Complete	10/15/2010	10/15/2010	2	2	4
SMART DRIVING (VTT)	Complete	10/11/2010	10/11/2010	8	2	16

Total Red Line Training (Hours): 57

Green Line Training (P2000 LRVs):

RAIL SYSTEM SAFETY	Complete	10/26/2010	10/26/2010	4	7	28
DRUG AND ALCOHOL REASONABLE SUSPICION DETERMINATION	Complete	10/27/2010	10/27/2010	0.5	1	0.5
GOVERNMENT EMERGENCY TELECOMMUNICATIONS SYSTEM (GETS)	Complete	10/28/2010	10/28/2010	3	1	3

Total Green Line Training (Hours): 31.5

Gold Line Training (P2550 LRVs):

PRE-SUPERVISORY TRAINING	Complete	10/14/2010	14	1	14
--------------------------	----------	------------	----	---	----

Total Gold Line Training (Hours): 14

Total Rail Fleet Services Instruction for the month of October 2010 (Hours): 117.5

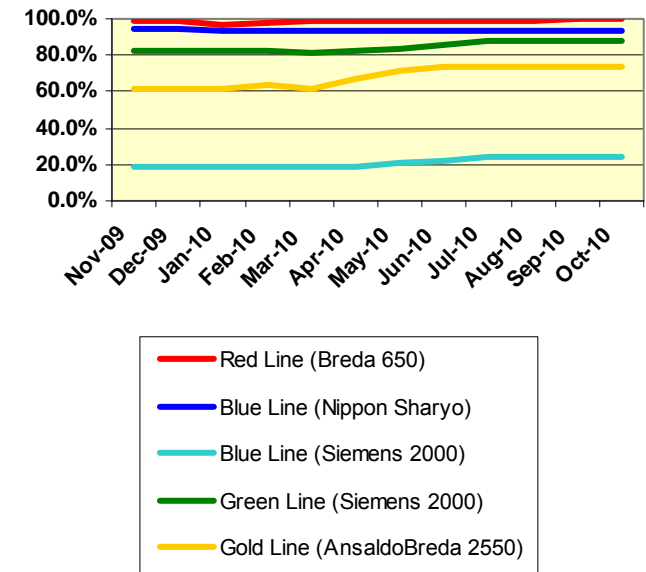
Core Vehicle Training Completed:

BLUE RED GREEN GOLD

Percentage of core vehicle training complete: 92.9% 99.5% 87.9% 73.4%
Siemens 2000 training complete: 24.1% N/A N/A N/A

Average Specialist Rail Experience Level in Years: 11.1 11.0 8.0 9.1

Core Training Completed



Variations caused by new hires, employee transfers, & training completed