



Rail Fleet Services Monthly Report September 2010



Metro

Table of Contents

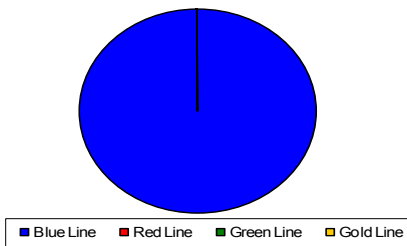
• Safety	
– Industrial Injuries	Page 1
– Rail Vehicle Accidents & Major Incidents	Page 2
• Customer Service	
– Service Delivery – AM/PM Pull-Outs	Page 3
– Vehicle Utilization – Blue Line & Green Line	Page 4
– Vehicle Utilization – Red Line & Gold Line	Page 5
– Mean Miles Between Failures (Major)	Page 6
– Repeat Failures (Major)	Page 7
• Business Processes	
– Reported Incidents	Page 8
– Preventative Maintenance Compliance	Page 9
• Finance	
– Vandalism & Graffiti Costs	Page 10
– Graffiti Pictures	Page 11
– Material & Labor Costs	Page 12
– Cost per mile	Page 13
– Absence vs. Overtime	Page 14
• Engineering	
– Rail Vehicle Engineering Project Summary	Page 15
– P2550 Vehicle Acceptance Program	Page 16
• Quality Assurance	
– Warranty Program Projects Summary	Page 17
• Growth	
– Rail Fleet Service Training	Page 18

Industrial Injuries – Lost Work Hours

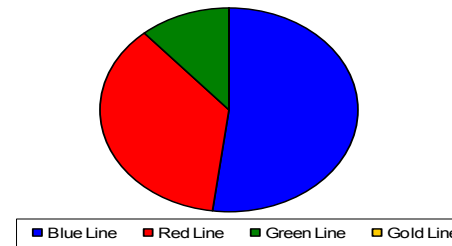
September 2010

	Oct-09	Nov-09	Dec-09	Jan-10	Feb-10	Mar-10	Apr-10	May-10	Jun-10	Jul-10	Aug-10	Sep-10	Year to Date
Blue Line	352	288	200	176	160	264	256	328	424	496	472	352	3,768
Red Line	344	356	352	352	200	176	176	280	168	176	80	0	2,660
Green Line	0	8	136	168	168	136	16	3	0	56	128	0	819
Gold Line	0	0	8	0	0	0	0	0	0	0	0	0	8
Totals	696	652	696	696	528	576	448	611	592	728	680	352	7,255

September 2010 - Lost Work Hours



Year-to-Date Lost Work Hours



	Employees		September 2010 Lost Work Hours			
	Assigned	Active	Service Attendant	Maint. Specialist	Body Repairer /Painter	September 2010 Total Hrs.
Blue Line	107	103	0	176	176	352
Red Line	105	101	0	0	0	0
Green Line	48	46	0	0	0	0
Gold Line	50	50	0	0	0	0
Totals	310	300	0	176	176	352
Total Lost Work Hours for 12-months = 352 hours						

Rail Vehicle Accidents & Major Incidents

September 2010

Repair Costs	Oct-09	Nov-09	Dec-09	Jan-10	Feb-10	Mar-10	Apr-10	May-10	Jun-10	Jul-10	Aug-10	Sep-10	Totals
Blue Line	\$0	\$38,396	\$656	\$39,034	\$5,600	\$11,305	\$2,100	\$5,705	\$2,050	\$36,498	\$50,124	\$916	\$192,384
Red Line	\$0	\$0	\$0	\$0	\$0	\$0	\$0	\$0	\$0	\$0	\$0	\$0	\$0
Green Line	\$0	\$0	\$0	\$0	\$0	\$0	\$0	\$4,799	\$0	\$0	\$0	\$0	\$4,799
Gold Line	\$0	\$3,538	\$0	\$17,028	\$4,404	\$0	\$0	\$3,523	\$0	\$653	\$0	\$441	\$29,587
Totals	\$0	\$41,934	\$656	\$56,062	\$10,004	\$11,305	\$2,100	\$14,027	\$2,050	\$37,151	\$50,124	\$1,357	\$226,770

Rail Vehicle Accident Costs - September 2010				
Metro Blue Main Line				
2010	Incident #	Problem code	Incident Description	Cost
9/8/2010	1789638	(10-72) Train vs. Pedestrian	Train southbound at Florence, T-157, Car # 165B - 161-133.	\$414.00
				414.00
2010	Incident #	Problem code	Incident Description	Cost
9/25/10	1814159	(10-73) Train vs. Vehicle	Hit and run, Long Beach and Anaheim, Train 7.	\$502.00
				502
TOTAL FOR METRO BLUE LINE				\$916.00
Metro Gold Main Line				
2010	Incident #	Problem code	Incident Description	Cost
9/28/10	1817136	(10-72) Train vs. Pedestrian	Pedestrian jumped from bridge, over Colorado Box, and struck southbound train no. 8.	\$441.00
TOTAL FOR METRO GOLD LINE				\$441.00
GRAND TOTAL				\$1,357.00
(10-71) = Train vs. Object, (10-72) = Train vs. Pedestrian, (10-73) = Train vs. Vehicle (10-74) = Train vs. MTA Vehicle, (10-75) = Derailment				

Service Delivery – AM/PM Pull-Outs September 2010

Cars Available for AM/PM Pull-Outs

Blue Line – Fleet Size 69 cars

- Weekday pull-out: 60 cars
- Weekend pull-out: 36 cars
- **Monthly Mileage: 408,750 miles**

Red Line - Fleet Size 104 cars

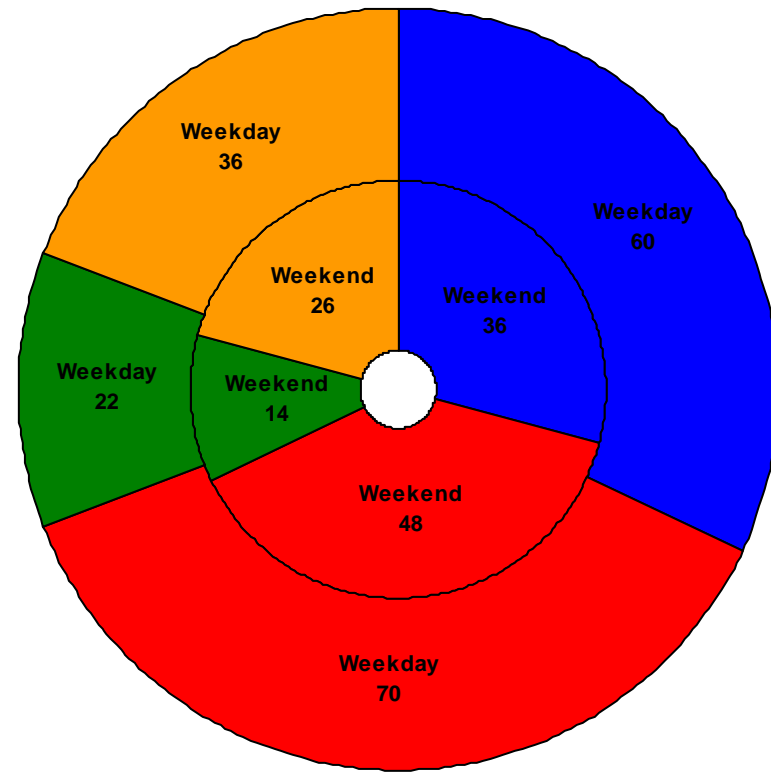
- Weekday pull-out: 70 cars
- Weekend pull-out: 48 cars
- **Monthly Mileage: 502,944 miles**

Green Line – Fleet Size 29 cars

- Weekday pull-out: 22 cars
- Weekend pull-out: 14 cars
- **Monthly Mileage: 215,401 miles**

Gold Line – Fleet Size 52 cars

- Weekday pull-out: 36 cars
- Weekend pull-out: 26 cars
- **Monthly Mileage: 218,719 miles**



■ Blue Line ■ Red Line ■ Green Line ■ Gold Line

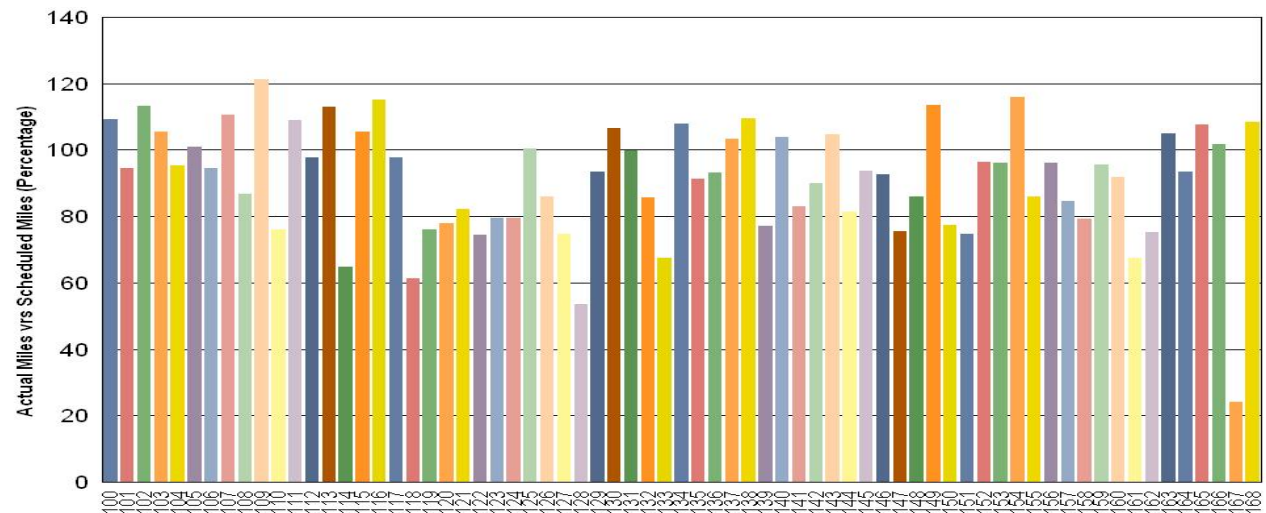
Vehicle Utilization September 2010

Blue Line – Vehicle 167 was out of service for several weeks due to an articulation overhaul.

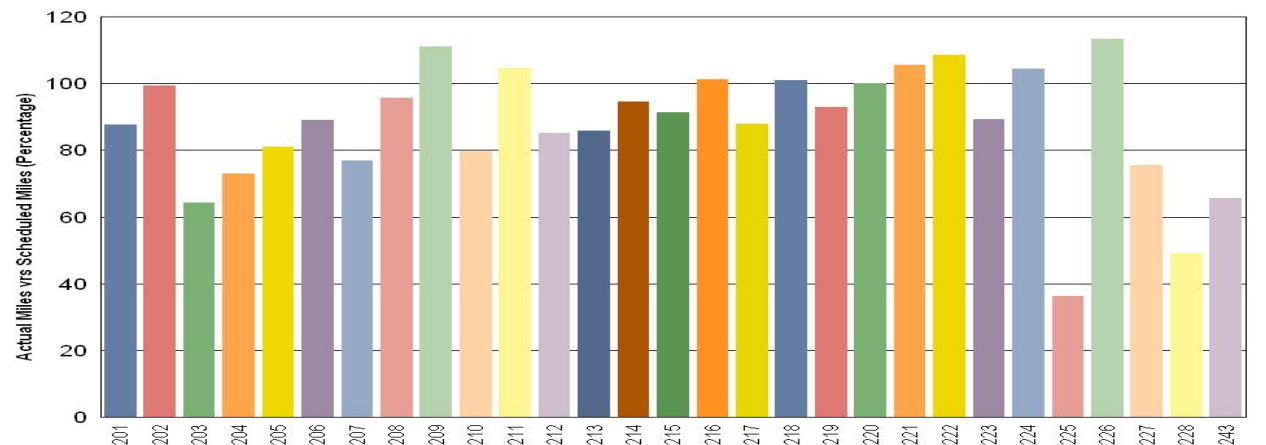
Note: Percentage includes an average 4% mileage deduction for Yard mileage and Vehicle Testing.

Green Line – The fleet has met the daily maximum utilization requirement for the month of September.

Metro Blue Line



Metro Green Line

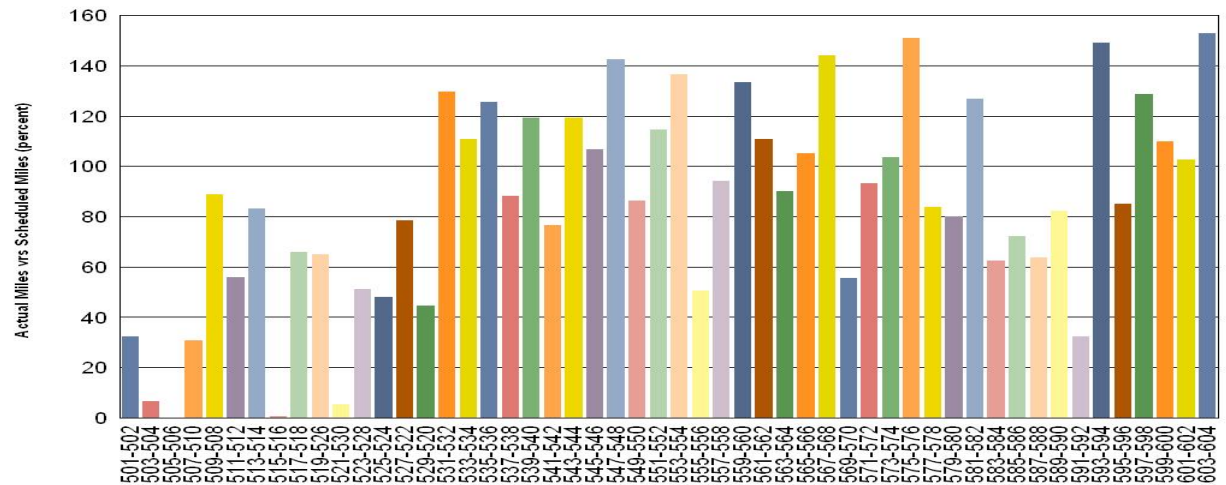


Vehicle Utilization September 2010

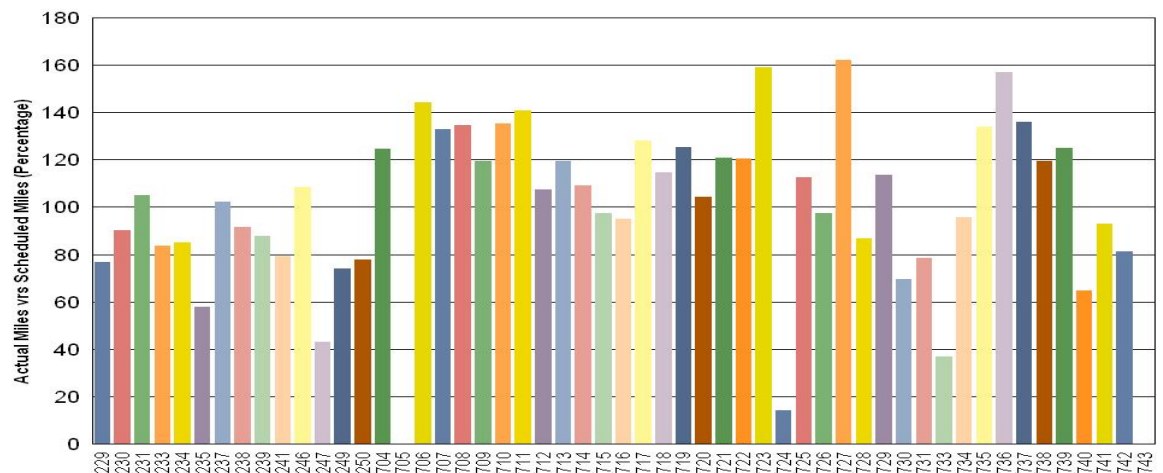
Red Line – Vehicles 501-502, 503-504, 505-506, 507-510, 515-516, 521-530, and 591-592. These vehicles are down for propulsion, floor, and brake problems.

Percentage includes an average 4% mileage deduction for Yard mileage and Vehicle Testing.

Metro Red Line



Metro Gold Line



Mean Miles Between Failures (Major) September 2010

Miles Between Major Failures

Blue Line: 17,772 miles (23 Major Failures)

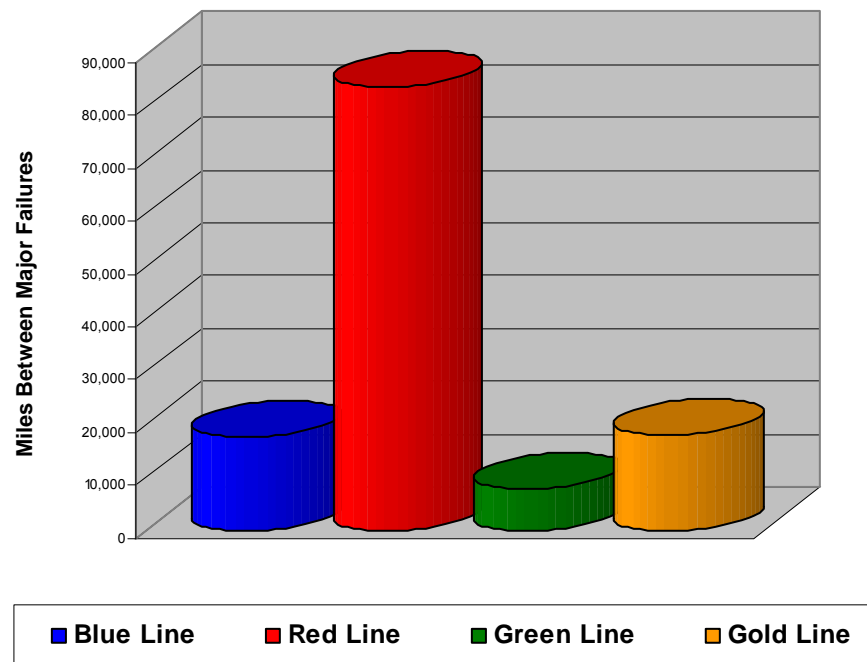
Red Line: 83,824 miles (6 Major Failures)

Green Line: 7,977 miles (27 Major Failures)

Gold Line: 13,670 miles (16 Major Failures)

Siemens P2000 15,935 miles (3 Major Failures)

AnsaldoBreda P2550 13,147 miles (13 Major Failures)



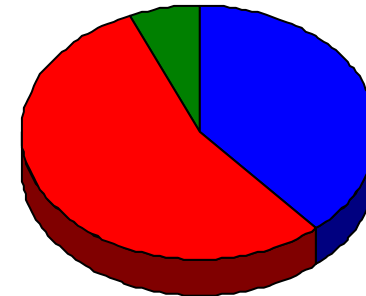
Repeat Failures (Major) September 2010

Metro Blue Line: 2 Repeat Failures

Metro Red Line: 17 Repeat Failures

Metro Green Line: 2 Repeat Failures

Metro Gold Line: 0 Repeat Failures



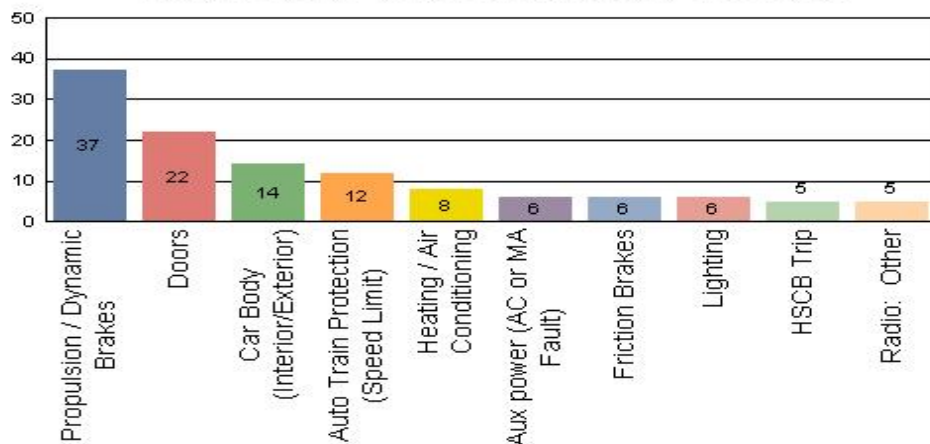
■ Blue Line ■ Red Line ■ Green Line ■ Gold Line

Repeater Car Details - September 2010								
System	Blue Line		Red Line		Green Line		Gold Line	
	Car #	Repeats	Car #	Repeats	Car #	Repeats	Car #	Repeats
Automated Train Protection	164	1						
Car Body	112	1						
Communication			587	2				
Doors								
Friction Brakes			539	4				
HVAC			557	3				
Propulsion/Dynamic Brake			511	1	209	1		
			512	1	217	1		
			520	3				
			521	1				
			524	1				
			551	1				
TOTALS	2		17		2		0	

Reported Incidents September 2010

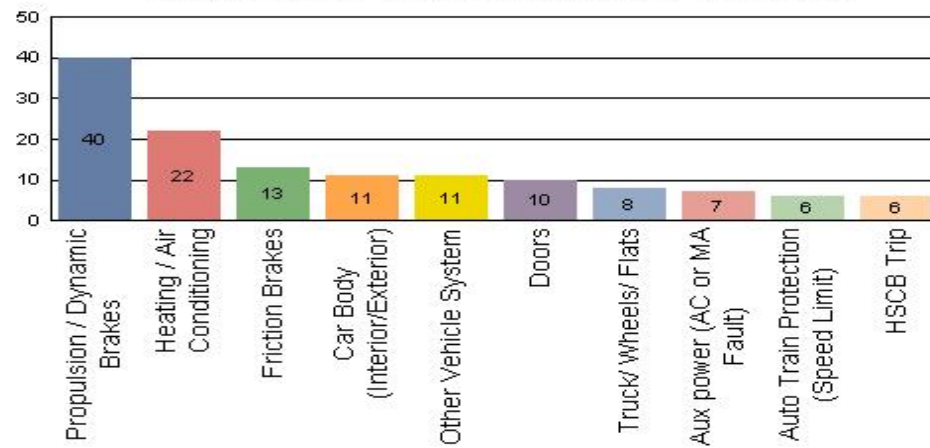
Metro Blue Line

Count of the Top 10 Incident Problems



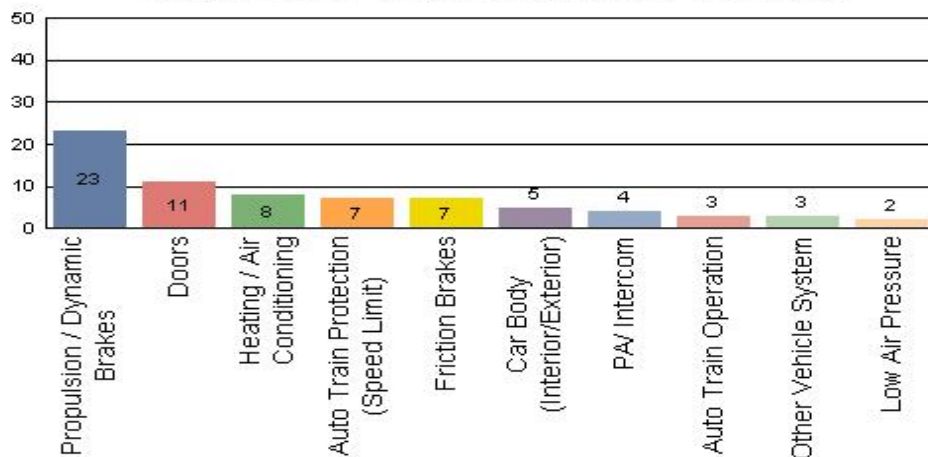
Metro Red Line

Count of the Top 10 Incident Problems



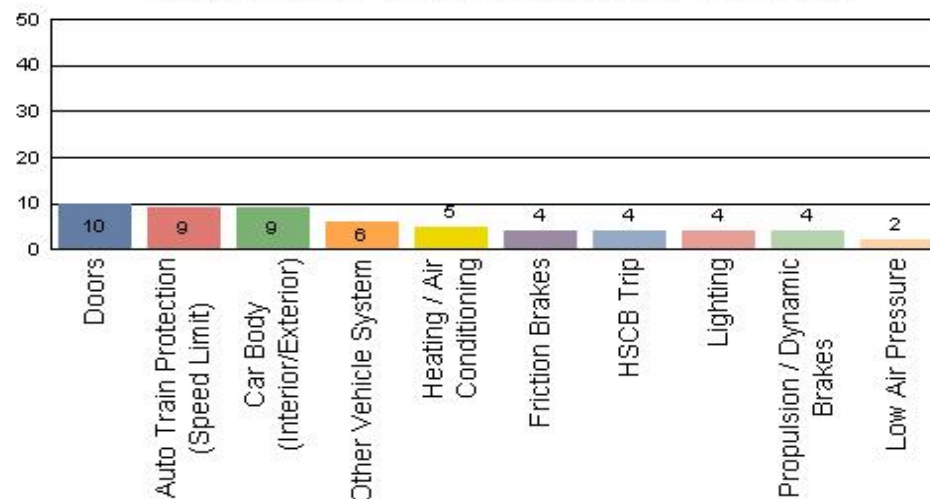
Metro Green Line

Count of the Top 10 Incident Problems



Metro Gold Line

Count of the Top 10 Incident Problems

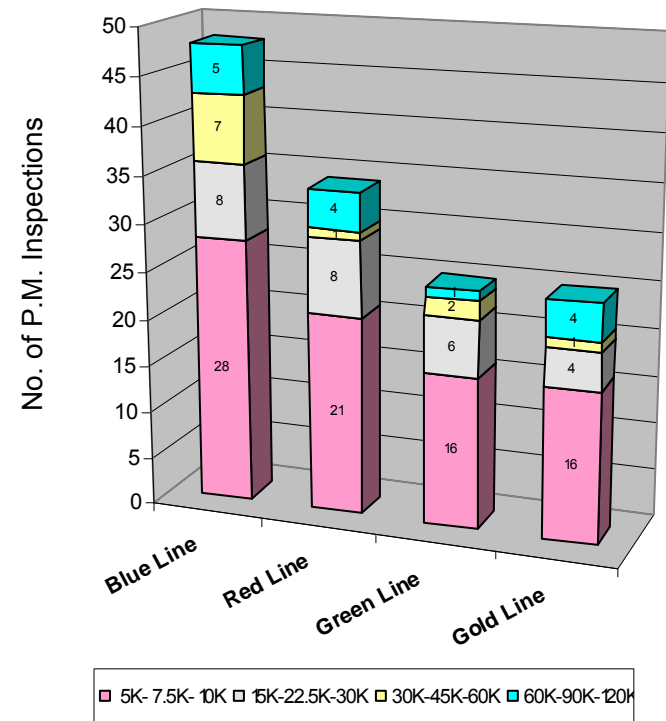


Preventative Maintenance Compliance September 2010

Averages	Sep-09	Oct-09	Nov-09	Dec-09	Jan-10	Feb-10	Mar-10	Apr-10	May-10	Jun-10	Jul-10	Aug-10	Sep-10
Blue Line	100%	100%	100%	100%	100%	100%	100%	100%	100%	100%	100%	100%	100%
Red Line	100%	100%	100%	100%	100%	100%	100%	100%	100%	100%	100%	100%	100%
Green Line	100%	100%	100%	100%	100%	100%	100%	100%	100%	100%	100%	100%	100%
Gold Line	100%	100%	100%	100%	100%	100%	100%	100%	100%	100%	100%	100%	100%

September 2010 Preventative Maintenance Inspections

No. of P.M. Inspections	5K-7.5K-10K	15K-22.5K-30K	30K-45K-60K	60K-90K-120K	Totals	Percent Compliance
Blue Line	28	8	7	5	48	100%
Red Line	21	8	1	4	34	100%
Green Line	16	6	2	1	25	100%
Gold Line	16	4	1	4	25	100%
Totals:	81	26	11	14	132	100%

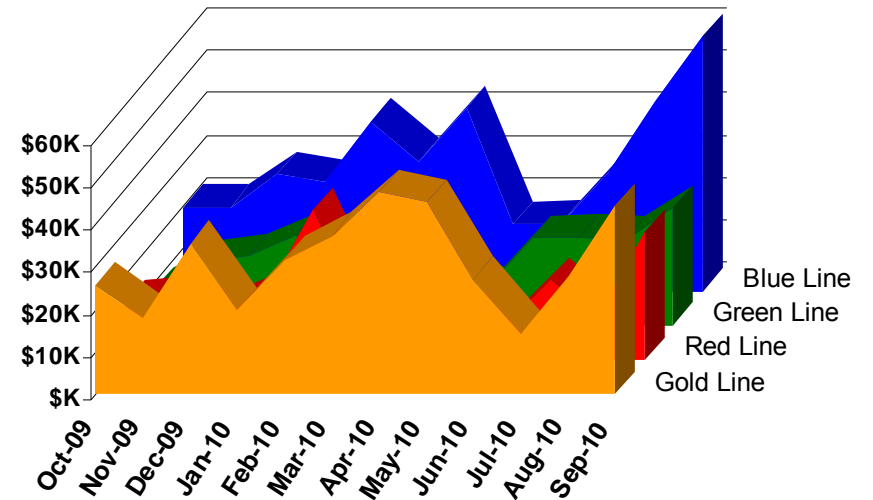


Vandalism & Graffiti Report

September 2010

	Oct-09	Nov-09	Dec-09	Jan-10	Feb-10	Mar-10	Apr-10	May-10	Jun-10	Jul-10	Aug-10	Sep-10	Year-to-Date
Blue Line	\$19,686	\$19,757	\$27,409	\$25,519	\$40,085	\$30,557	\$42,951	\$15,825	\$15,888	\$27,868	\$41,374	\$59,922	\$366,841
Green Line	\$8,355	\$14,915	\$16,393	\$20,985	\$35,216	\$20,933	\$7,585	\$8,615	\$20,555	\$20,787	\$20,226	\$27,624	\$222,188
Red Line	\$13,684	\$14,334	\$11,227	\$15,838	\$13,809	\$11,162	\$12,115	\$11,001	\$7,715	\$18,777	\$9,737	\$30,147	\$169,545
Gold Line	\$25,750	\$17,992	\$35,479	\$19,892	\$31,808	\$37,462	\$47,526	\$45,114	\$27,086	\$14,117	\$27,962	\$44,191	\$374,380
Totals	\$67,475	\$66,998	\$90,508	\$82,234	\$120,918	\$100,114	\$110,177	\$80,555	\$71,244	\$81,549	\$99,299	\$161,883	\$1,132,955

September 2010 Vandalism & Graffiti - All Rail				
	Qty	Labor	Materials	Totals
Windows replaced	92	\$11,025	\$19,764	\$ 30,789
Vandal Shields	878	\$21,925	\$11,400	\$ 33,325
Seats Cleaned	1,125	\$3,041	\$0	\$ 3,041
Seats Replaced	284	\$8,946	\$11,859	\$ 20,805
Ext/Int Repairs	1,662	\$34,297	\$4,509	\$ 38,806
Totals for September 2010		\$110,520	\$51,363	\$ 161,883



Graffiti Pictures September 2010



A - Metro Blue Line



B - Metro Green Line



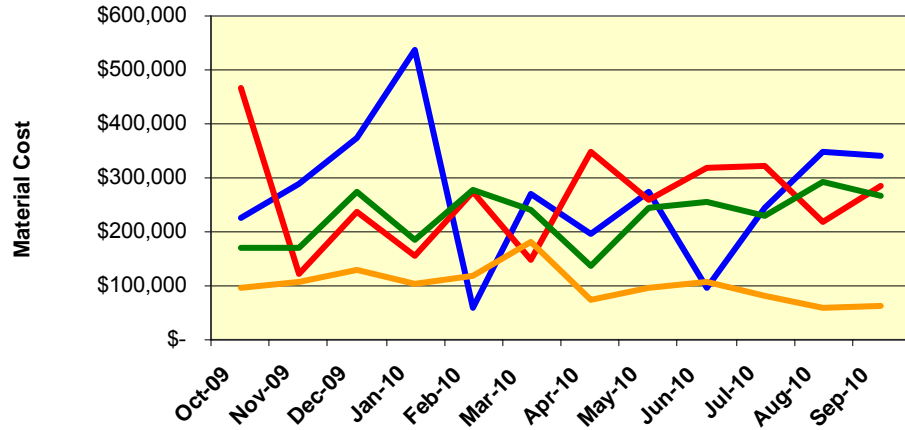
C - Metro Gold Line

Material and Labor Costs

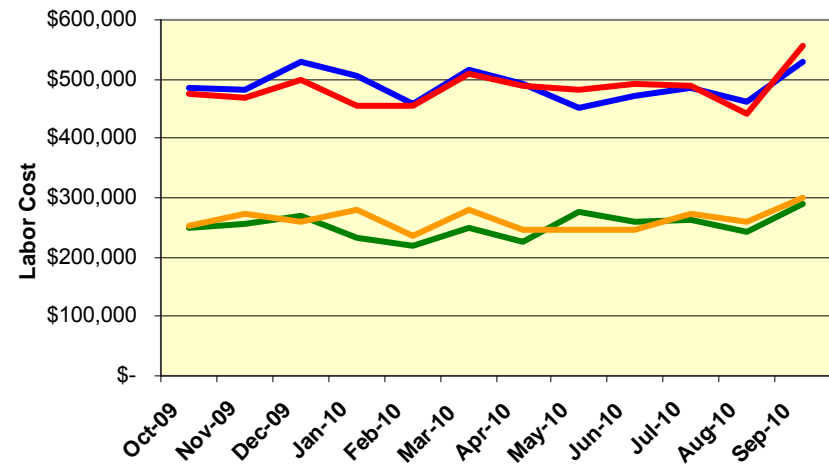
September 2010

MATERIALS	Oct-09	Nov-09	Dec-09	Jan-10	Feb-10	Mar-10	Apr-10	May-10	Jun-10	Jul-10	Aug-10	Sep-10	Totals
Blue Line	\$ 225,796	\$ 290,113	\$ 375,541	\$ 535,717	\$ 57,633	\$ 270,743	\$ 197,253	\$ 272,347	\$ 94,924	\$ 245,000	\$ 347,681	\$ 341,681	\$ 3,254,429
Red Line	\$ 466,761	\$ 123,484	\$ 238,738	\$ 157,351	\$ 275,856	\$ 149,720	\$ 348,088	\$ 258,558	\$ 317,139	\$ 321,375	\$ 219,030	\$ 285,906	\$ 3,162,006
Green Line	\$ 169,738	\$ 168,715	\$ 272,871	\$ 184,149	\$ 276,116	\$ 240,194	\$ 136,768	\$ 244,408	\$ 256,000	\$ 231,296	\$ 291,938	\$ 267,489	\$ 2,739,682
Gold Line	\$ 96,151	\$ 106,126	\$ 128,297	\$ 105,109	\$ 117,356	\$ 179,658	\$ 72,343	\$ 98,102	\$ 105,801	\$ 81,897	\$ 57,693	\$ 61,673	\$ 1,210,207
Totals	\$ 958,446	\$ 688,438	\$ 1,015,447	\$ 982,326	\$ 726,961	\$ 840,315	\$ 754,453	\$ 873,415	\$ 773,864	\$ 879,567	\$ 916,342	\$ 956,749	\$ 8,493,233

Material Costs



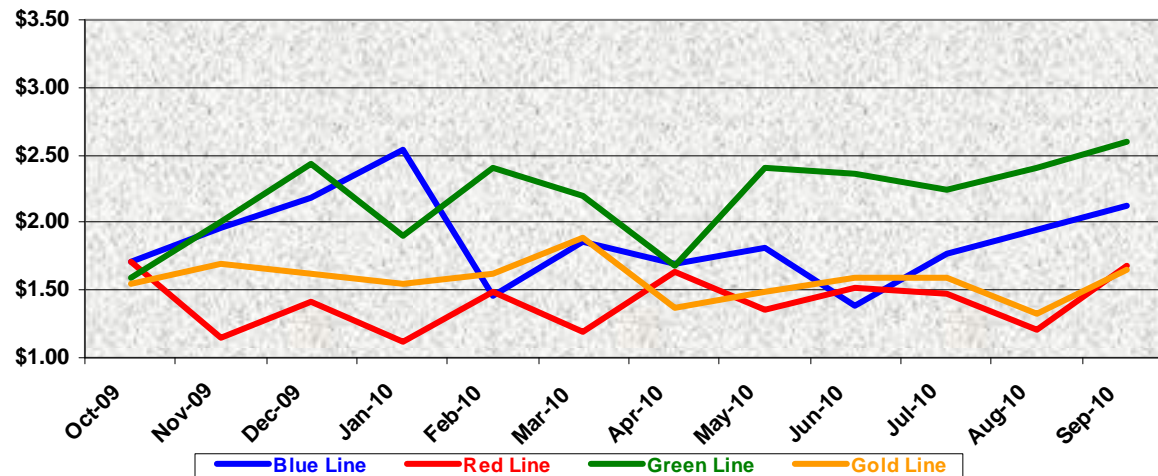
Labor Costs



LABOR	Oct-09	Nov-09	Dec-09	Jan-10	Feb-10	Mar-10	Apr-10	May-10	Jun-10	Jul-10	Aug-10	Sep-10
Blue Line	\$ 487,020	\$ 483,394	\$ 527,760	\$ 505,239	\$ 458,335	\$ 515,305	\$ 492,862	\$ 451,979	\$ 472,293	\$ 484,536	\$ 462,218	\$ 529,087
Red Line	\$ 474,751	\$ 468,331	\$ 498,786	\$ 453,571	\$ 453,580	\$ 510,664	\$ 487,627	\$ 482,974	\$ 492,936	\$ 487,742	\$ 442,482	\$ 555,982
Green Line	\$ 248,915	\$ 256,078	\$ 269,668	\$ 231,918	\$ 218,637	\$ 248,224	\$ 225,004	\$ 276,665	\$ 258,297	\$ 262,563	\$ 241,807	\$ 291,569
Gold Line	\$ 251,309	\$ 271,694	\$ 259,793	\$ 278,537	\$ 237,594	\$ 279,935	\$ 247,135	\$ 247,474	\$ 247,000	\$ 271,885	\$ 257,900	\$ 299,833
Totals	\$ 1,461,995	\$ 1,479,498	\$ 1,556,008	\$ 1,469,265	\$ 1,368,146	\$ 1,554,128	\$ 1,452,628	\$ 1,459,092	\$ 1,470,526	\$ 1,506,727	\$ 1,404,407	\$ 1,676,471

Cost Per Mile September 2010

Cost per mile:	Oct-09	Nov-09	Dec-09	Jan-10	Feb-10	Mar-10	Apr-10	May-10	Jun-10	Jul-10	Aug-10	Sep-10	Average
Blue Line	\$1.71	\$1.96	\$2.18	\$2.53	\$1.45	\$1.85	\$1.69	\$1.82	\$1.39	\$1.77	\$1.95	\$2.13	\$1.87
Red Line	\$1.71	\$1.15	\$1.42	\$1.13	\$1.48	\$1.19	\$1.64	\$1.36	\$1.51	\$1.48	\$1.21	\$1.67	\$1.41
Green Line	\$1.59	\$2.01	\$2.43	\$1.91	\$2.41	\$2.20	\$1.67	\$2.41	\$2.36	\$2.24	\$2.40	\$2.60	\$2.19
Gold Line	\$1.55	\$1.69	\$1.62	\$1.55	\$1.62	\$1.89	\$1.37	\$1.49	\$1.59	\$1.59	\$1.33	\$1.65	\$1.58



No facility costs are included

Absences vs. Overtime

September 2010

ABSENCE TYPE and HOURS	3940	3941	3942	3943	3944	Total
BER-BEREAVEMENT	0	0	24	0	0	24
CTO-COMPENSATORY TIME OFF	8	91	160	100	68	427
CVA - CASUAL VACATION	0	4	944	0	260	1,208
DRN-DR. APPOINTMENT 48 HR N	0	0	0	0	0	0
DSL-DISABILITY LEAVE/LONG	0	176	336	0	0	512
EFH-EMG. FLOAT HOL.	0	16	64	32	24	136
ETO-EXCUSED TIME OFF	4	19	20	5	20	67
FML-FAMILY CARE LEAVE	64	272	218	196	176	926
HLF-HOLIDAY FLOATING	32	392	288	128	112	952
HNP-HOLIDAY NOT PAID	0	16	16	16	0	48
HOL-HOLIDAY LEGAL	40	496	496	120	120	1,272
II-INDUSTRIAL INJURY	0	352	0	0	0	352
JUR-JURY DUTY	40	0	8	0	0	48
LC1-LABOR CODE 233	16	256	146	32	56	506
MLN-MILITARY ABSENCE-UNPAID	0	0	16	0	0	16
OWP-OFF WITH PERMISSION	0	0	0	0	24	24
RTO-REQUESTED TIME OFF-NO PAY	0	28	16	0	0	44
SCK-SICK PAY	24	148	168	32	128	500
SCW-SICK WITHOUT PAY	0	32	0	176	128	336
UB-UNION BUSINESS	0	276	188	173	141	778
VAC-VACATION	32	990	276	386	488	2,172
Total Absence Hours	260	3,563	3,383	1,397	1,745	10,347
Number of Work Force (assigned)	20	107	105	48	50	330
Full Work Force hours/month	3,466	18,543	18,197	8,318	8,665	57,189
Absence as a % of Work Force	7%	19%	19%	17%	20%	18%
OVERTIME TYPE and HOURS	3940	3941	3942	3943	3944	Total
CTB-COMPENSATORY TIME TO BANK	0	184	422	113	132	850
OTP-PREM OVERTIME	264	610	2056	1056	795	4780
WLO-Worked Lunch Overtime	0	24	114	35	48	221
Total	264	818	2592	1205	974	5851
Overtime as a % of Work Force	8%	4%	14%	14%	11%	10%
UNCOVERED ABSENCES	3940	3941	3942	3943	3944	Total
Absences FTE	1	21	20	8	10	60
OTP FTE	2	5	15	7	6	34
FTE Difference	0	16	5	1	4	26

Rail Vehicle Engineering Project Summary

September 2010

Major Projects	
A650 Refurbishment Expo Readiness P865/P2000 Fleets P2000 Signal Package Conversion Protran Worker Protection Device	
P2000 Component Overhaul P2550 Vehicle Acceptance P3010 Vehicle Acquisition MBL Overhaul	
Technical Specifications	
MBL, MGL, MRL, MGD (all fleets):	Bombardier to assemble 4 gearboxes Repair/Overhaul Gearbox (specification in process) P2000 Axle Assembly, P865/P2020 Axle Assembly Red Line Journal Bearing Overhaul P2000 HVAC Suttrak Units Overhaul Chevron Springs
Active Test Bulletins	
MBL (P865/P2020):	Inspection interval investigation (5K-7.5K) Door capacitor Raise Motor Alternator Trip Setting Replace GRS/TWC with H&K TWC Moisture Eliminator Gutter-Chopper Solid State Flashing Circuit
MRL (A650 Base):	Chevron springs DC-AC traction motor blower GE gear unit Blower Unit (L)
MRL (A650 Option):	Pinion shaft Emergency door seal Gearbox Air spring Vandal shield Rubber boots (retest) Brushes Motor evaporator
MGL (P2000):	Door operator assembly
Active Modification Bulletins	
MBL (P865/P2020):	Watch gap, Wheelchair, Security cameras Battery disconnect decals Gearbox long breather tube
MBL (P2000):	Add TWC route select feature No acceleration during ATP Overspeed
MRL (A650 Option/Base):	FCC high voltage decal Remove trip switch wiring Manual controller modification by American Transit Front door latch Replace end door threshold plate Dead battery start Buss bar isolation ATO overspeed brake rate
MGL (P2000):	Master controller with new cam profiles Removal of convex mirror head Spin/slide sanding modification
MGDL (P2000):	Battery disconnect decals
Active Technical Request Form	
MBL (P865/P2020):	Destination signs Journal bearing Air compressor motor Chopper intake Damper assembly Knorr washer Motor alternator set CB1 tripping problem
MRL (A650 Option/Base):	ATO berthing Flender gearbox Pinion shaft Coupler corrosion cover Gate drive power supply Location decal Rectifier Door latching relay Twist lug connector Thermistor & TLR circuit failures PA system & air whistle/horn faults Safety Cable Hand Assistance Strap Contact Adhesive Flooring H-4 Glass Blower motor impeller Bearing Grease
MGL (P2000):	Door operator assemble repair vendor Sanding system Air vent grille Exterior rear view mirror Sun shade gear latch Car 201 technical assistance EMI trip faults HVAC motor Sunshade Gear Latch
MGDL (P2000/P2550):	Truck tramming investigation Operator door assembly overhaul Diver cab window glass

P2550 Vehicle Acceptance Program

September 2010

Vehicle Status Update:

- 41 cars at Metro
- 39 cars at MGD
- 2 cars at MBL
- A total of 39 Cars Conditionally Accepted (CA)
- One car accepted in August.
- 9 Cars at Pittsburgh Assembly Plant

Engineering Activities Update:

- Event recorder – AB is dispatching software engineer to MGD to lead & resolve & qualify the system. The work is ongoing.
- ATP/TWC 250 & 100 Hz nuisance faults – problem has been traced to a component that drifts due to overheating resulting in diagnostic failure. A calibration routine has been devised to solve problem via software solution. Test software is forthcoming followed by final software release by end of October.
- Clock and diagnostic issues will be solved with Software 3.1 scheduled for release and fleet implementation first week in November.
- Traction Motor HV Junction Box – Twenty (20) pieces have been manufactured and shipped; to date 3 rains have been outfitted and new style bracket.
- Brake Caliper Overhaul – Two complete car sets have been shipped to Knorr facilities for overhaul. An exchange program and schedule is being developed. The work is ongoing.

Production Car Status – Pittsburgh:

- Car 744 - 100% complete, scheduled shipment to MGD is Oct 18th
- Car 745 - 92% final testing in progress
- Car 746 - 85% complete, trucks installed
- Cars 747, 748, 749, 750 - 20 to 80% complete, assembly in process
- Cars 701, 702 – Re-configuration of car in progress, wire harness and cables received; Italian contractor performing rewire work.

Project Management:

- Contract spares are being process and delivered to Metro
- Daily and weekly meetings with AB Project Management to solve revenue service issues.

QA-Warranty Program Projects Summary

September 2010

ADMINISTRATION/ ERS ACTIVITES	
<ul style="list-style-type: none"> • QA Audits Program – The conducted audits at each division prior to CPUC Audit proved successful as and as a result Metro Rail divisions passed with no deviations. Interim Executive Officer Kennedy and staff pleased with results. • P2550 Contract Programs- On track. QA overseeing remaining cars to be delivered. • Special Projects & Technical Assist Programs, RWES' continue to assist both Engineering & Maintenance in providing corrective action in vehicle problem areas. • QA working diligently with RFS identifying and testing HRV wheels with anomalies. Defective wheels are condemned. • Program Audits, Parts Processing, Cost Avoidance Recovery Data, Video Surveillance Archives, Safety, Accident / Incident Files, & Warranty Processing information. QA-Warranty Share Drive contains all pertinent data. • The ERS' are implementing respective division equipment records into Spears M3 System. • All archived QA documentation & files are available for management inquiry. • The Video Surveillance records, Incident & Accident Reports may come back under QA oversight. • The warranty & cost avoidance records are maintained and up to date. • Close administrative support for Maintenance continues. 	
RED LINE ACTIVITES	
<ul style="list-style-type: none"> • On some of the MRL wheels major defect noted. QA identified wheel lot and is on a 24 hour watch overseeing inspection and Ultrasonic Testing of all wheels. • T/M Mounts & Truck Frames continue, ABI weld repair project oversight being observed QA/Warranty. • Special Project support e.g., Compressor Motors, T/M Bearings, Inverters, Oscillators & Coupler Cables, • Process 22 Warranty Parts, 32 R&R Parts, cost avoidance savings labor & parts = \$15,906.50 	
BLUE LINE ACTIVITIES	
<ul style="list-style-type: none"> • Support engineering testing EXPO Line TWC modification and braking issues • Oversee equipment overhaul campaigns (Door Systems, Car Body, Lighting Systems, & Car interior Projects) • Tech assist, draft Technical Procedures for RFSTS, also generate equipment Power-Point-Presentations • Write technical testing bulletins and provide support on traction motor overhaul specification • 35 R&Rs processed for MGL Maintenance 	
GREEN LINE ACTIVITES	
<ul style="list-style-type: none"> • Support Engineering with resolving open issues on Circuit Relay, car issues, and operator mirror. • Continue close support with Overhaul vendors & Contractors. (Doors, Traction Motors, Gearboxes & Brake Systems). Oversee Gold Box 176 • Drafted Technical Reports & QA Power-Point-Presentations • Process 3 Warranty Parts, 44 R&R Parts, cost avoidance savings labor & parts = \$8,368.60 	
GOLD LINE ACTIVITES	
<ul style="list-style-type: none"> • P2550, oversee Acceptance Program and warranty. • Travel to Pittsburgh, California to monitor car build and help resolve open issues • Maintain P2550 project documentation, contract deliverables & maintenance records. • Conduct FAI & parts inspections • Support ABI & RFSTS Engineering with Car Acceptance test issues. • 40 Process R&R & Warranty Parts, cost avoidance savings labor & parts = \$82,351.74 	

Rail Fleet Services Instruction

September 2010

Training classes completed during the month of September 2010

Description	Status	Start	End	Course Hours	Student Count	Training Hours
<u>Blue Line Training - (865/2020 & P2000 LRV):</u>						
BLOODBORNE PATHOGENS	Complete	9/8/2010	9/8/2010	2	1	2
EXCEPTIONAL CUSTOMER SERVICE	Complete	9/28/2010	9/28/2010	3	1	3
PERSONAL PROTECTIVE EQUIPMENT	Complete	9/8/2010	9/8/2010	2	1	2
SAFETY ORIENTATION: ON ALERT	Complete	9/3/2010	9/3/2010	2	1	2

Total Blue Line Training (Hours): 9

Red Line Training (Breda A650 HRV):

OUTLOOK 2003 - INTERMEDIATE	Complete	9/16/2010	9/16/2010	3	1	3
ETD PEOPLE SKILLS	Complete	9/9/2010	9/9/2010	3	2	6
RAIL SYSTEM SAFETY	Complete	9/1/2010	9/29/2010	3	9	27
TEAMWORK - PART 1	Complete	9/1/2010	9/1/2010	2	1	2
WAYSIDE WORKER PROTECTION	Complete	9/22/2010	9/22/2010	4	6	24
RFS BRED A 650 PREVENT MAINT INSP	Complete	9/1/2010	9/16/2010	40	1	40
RFS BRED A 650 ATO SHOP TESTER	Complete	9/8/2010	9/10/2010	24	1	24
RFS BRED A 650 SIGNALRAIL ATO	Complete	8/26/2010	9/3/2010	24	1	24
LABOR INFORMATION MANAGEMENT SYSTEM	Complete	9/29/2010	9/29/2010	1	1	1

Total Red Line Training (Hours): 151

Green Line Training (P2000 LRVs):

RAIL SYSTEM SAFETY	Complete	9/1/2010	9/1/2010	3	1	3
RECORDS MANAGEMENT & INFORMATION SECURITY	Complete	9/9/2010	9/9/2010	3	1	3
ETD PEOPLE SKILLS	Complete	9/30/2010	9/30/2010	3	1	3

Total Green Line Training (Hours): 9

Gold Line Training (P2550 LRVs):

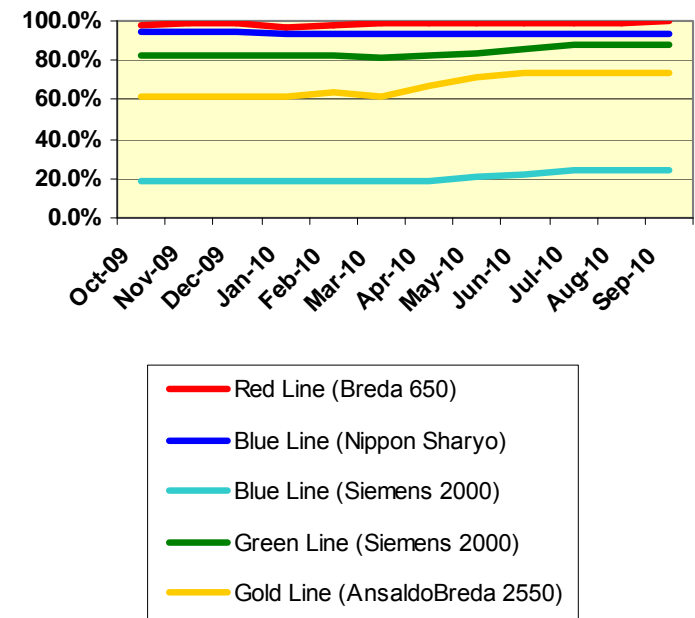
WAYSIDE WORKER PROTECTION	Complete	9/30/2010	9/30/2010	4	2	8
RAIL SYSTEM SAFETY	Complete	9/1/2010	9/15/2010	3	4	12
P-CARD TRAINING FOR CARD HOLDERS & AOS	Complete	9/1/2010	9/1/2010	2	1	2

Total Gold Line Training (Hours): 22

Total Rail Fleet Services Instruction for the month of September 2010 (Hours): 191.0

<u>Core Vehicle Training Completed:</u>	<u>BLUE</u>	<u>RED</u>	<u>GREEN</u>	<u>GOLD</u>
Percentage of core vehicle training complete:	92.9%	99.5%	87.9%	73.4%
Siemens 2000 training complete:	24.1%	N/A	N/A	N/A
Average Specialist Rail Experience Level in Years:	11.0	10.9	7.9	9.0

Core Training Completed



**Variations caused by new hires, employee transfers,
& training completed**