



Rail Fleet Services Monthly Report April 2011

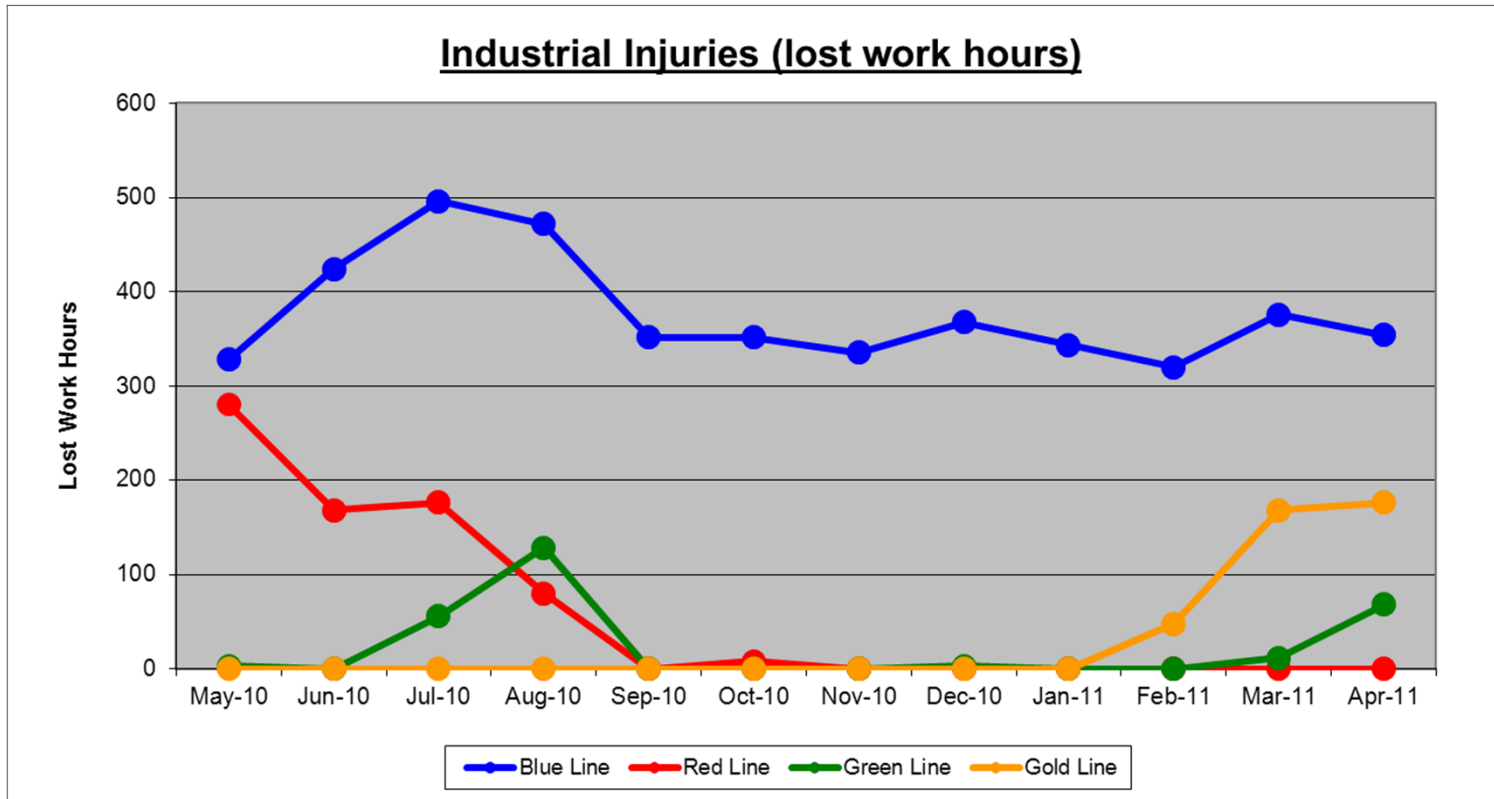


Metro

Table of Contents

| | |
|--|---------|
| • Safety | |
| – Industrial Injuries | Page 3 |
| – Rail Vehicle Accidents & Major Incidents | Page 4 |
| • Customer Service | |
| – Service Delivery – AM/PM Pull-Outs | Page 5 |
| – Vehicle Utilization – Blue Line & Green Line | Page 6 |
| – Vehicle Utilization – Red Line & Gold Line | Page 7 |
| – Mean Miles Between Failures (Major) | Page 8 |
| – Repeat Failures (Major) | Page 9 |
| • Business Processes | |
| – Reported Incidents | Page 10 |
| – Preventative Maintenance Compliance | Page 11 |
| • Finance | |
| – Vandalism & Graffiti Costs | Page 12 |
| – Graffiti Pictures | Page 13 |
| – Material & Labor Costs | Page 14 |
| – Cost per mile | Page 15 |
| – Absence vs. Overtime | Page 16 |
| • Engineering | |
| – Rail Vehicle Engineering Project Summary | Page 17 |
| – P2550 Vehicle Acceptance Program | Page 18 |
| • Quality Assurance | |
| – Warranty Program Projects Summary | Page 19 |
| • Growth | |
| – Rail Fleet Services Training | Page 21 |

Industrial Injuries – Lost Work Hours April 2011



| | Employees | | April 2011 Lost Work Hours | | | |
|--------------|-----------|--------|----------------------------|-------------------|------------------------|------------|
| | Assigned | Active | Service Attendant | Maint. Specialist | Body Repairer /Painter | Total Hrs. |
| Blue Line | 108 | 104 | 10 | 176 | 168 | 354 |
| Red Line | 102 | 98 | 0 | 0 | 0 | 0 |
| Green Line | 47 | 45 | 68 | 0 | 0 | 68 |
| Gold Line | 51 | 48 | 176 | 0 | 0 | 176 |
| Eng/QA/Admin | 25 | 25 | 0 | 0 | 0 | 0 |
| Totals | 333 | 320 | 254 | 176 | 168 | 598 |

Rail Vehicle Accidents & Major Incidents

April 2011

| Repair Costs | May-10 | Jun-10 | Jul-10 | Aug-10 | Sep-10 | Oct-10 | Nov-10 | Dec-10 | Jan-11 | Feb-11 | Mar-11 | Apr-11 | Totals |
|--------------|----------|---------|----------|----------|---------|---------|----------|----------|---------|---------|---------|----------|-----------|
| Blue Line | \$5,705 | \$2,050 | \$36,498 | \$50,124 | \$916 | \$4,781 | \$10,716 | \$16,938 | \$961 | \$2,114 | \$684 | \$26,990 | \$158,477 |
| Red Line | \$0 | \$0 | \$0 | \$0 | \$0 | \$0 | \$0 | \$562 | \$0 | \$0 | \$0 | \$0 | \$562 |
| Green Line | \$4,799 | \$0 | \$0 | \$0 | \$0 | \$0 | \$0 | \$0 | \$0 | \$0 | \$0 | \$0 | \$4,799 |
| Gold Line | \$3,523 | \$0 | \$653 | \$0 | \$441 | \$4,286 | \$3,016 | \$1,374 | \$239 | \$13 | \$4,031 | \$0 | \$17,576 |
| Totals | \$14,027 | \$2,050 | \$37,151 | \$50,124 | \$1,357 | \$9,067 | \$13,732 | \$18,874 | \$1,200 | \$2,127 | \$4,715 | \$26,990 | \$181,414 |

| Rail Vehicle Accident Costs - April 2011 | | | | |
|--|------------|---------------------|---|--------------------|
| Metro Blue Main Line | | | | |
| Date | Incident # | Problem code | Incident Description | Cost |
| 4/1/2011 | 2001558 | Train vs Pedestrian | Train 7, Operator T-068, Pacific Coast Highway station, Track 2, LRVs 157-153-(143) | \$189.00 |
| 4/1/2011 | 2001772 | Train vs Pedestrian | Male intoxicated passenger fell onto Right of Way in front of train 7 northbound. Operator was unsure if he made contact with individual. Operator T-201, Train 7, LRVs (116)-130-161, Florence station, track 1. | \$0.00 |
| 4/10/2011 | 2004329 | Train vs Auto | Train 2, Operator T-63, Consist 166A-139, Track 1 northbound, 200 feet prior to Pico Blvd. | \$13,336.00 |
| 4/16/2011 | 2009455 | Train vs Auto | Flower & 18th, Track 2 southbound, Train 4, Operator T-283, Consist 165A-106-155 | 13465.00 |
| | | | TOTAL FOR METRO BLUE LINE | \$26,990.00 |
| | | | GRAND TOTAL | 26,990.00 |

Service Delivery April 2011

Blue Line – Fleet Size 69 cars

| <u>Pull Out</u> | <u>Vehicles Required</u> | <u>Average Available</u> | <u>% Up (Down)</u> |
|-----------------|------------------------------|------------------------------|------------------------|
| Weekday: | 60 | 63 | 105% |
| Weekend: | 36 | 38 | 106% |

Late Pullouts: 0 *

Monthly Mileage: 404,495 miles

Expo Line – Fleet Size 15 cars

Red Line - Fleet Size 104 cars

| <u>Pull Out</u> | <u>Vehicles Required</u> | <u>Average Available</u> | <u>% Up (Down)</u> |
|-----------------|------------------------------|------------------------------|------------------------|
| Weekday: | 70 | 82 | 117% |
| Weekend: | 48 | 73 | 152% |

Late Pullouts: 0 *

Monthly Mileage: 531,800 miles

Green Line – Fleet Size 29 cars

| <u>Pull Out</u> | <u>Vehicles Required</u> | <u>Average Available</u> | <u>% Up (Down)</u> |
|-----------------|------------------------------|------------------------------|------------------------|
| Weekday: | 22 | 25 | 114% |
| Weekend: | 14 | 19 | 136% |

Late Pullouts: 0 *

Monthly Mileage: 215,741 miles



■ Blue Line ■ Red Line ■ Green Line ■ Gold Line

Gold Line – Fleet Size 51 cars

P2550 – Fleet Size 43 cars

P2000 – Fleet Size 8 cars

| <u>Pull Out</u> | <u>Vehicles Required</u> | <u>Average Available</u> | <u>% Up (Down)</u> |
|-----------------|------------------------------|------------------------------|------------------------|
| Weekday: | 42 | 43 | 102% |
| Weekend: | 26 | 40.5 | 156% |

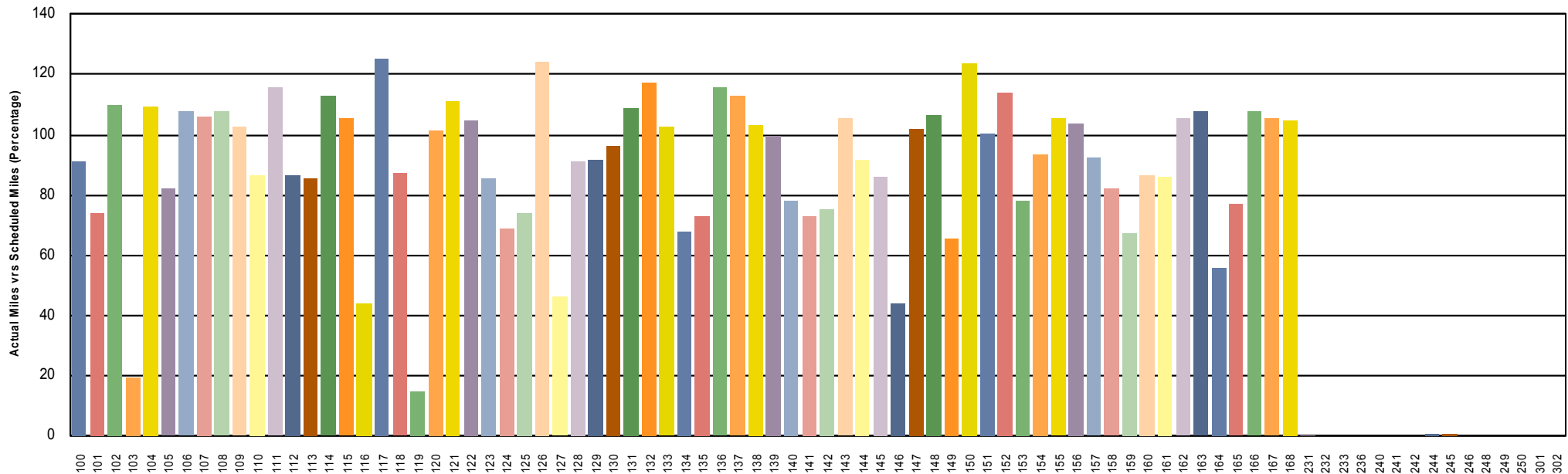
Late Pullouts: 0 *

Monthly Mileage: 271,301 miles

Vehicle Utilization

April 2011

Metro Blue/Expo Line Fleet

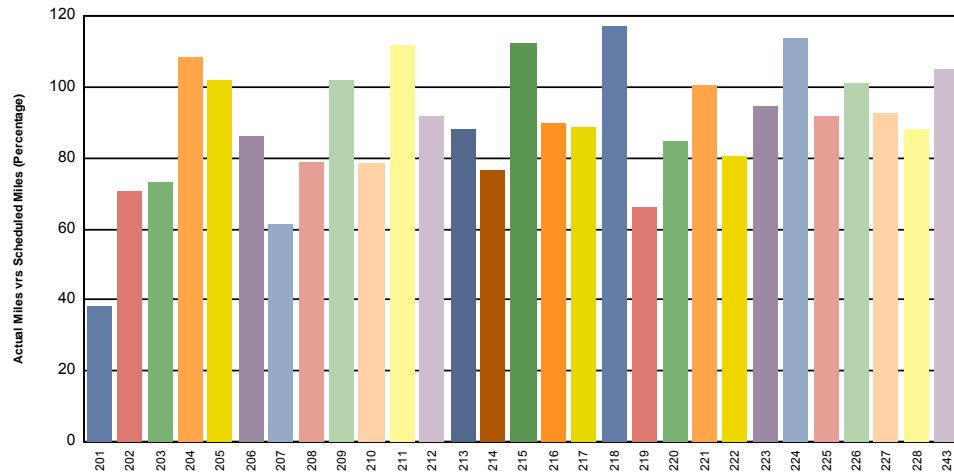


Blue Line car 103 is out of service for Journal Bearings and car 119 has been out of service for testing of a solid state inverter.

The entire Expo Fleet (all 15 cars, 231-302) are not in revenue service at this time, but may be listed due to training and testing. Mileage will be minimal each month until Expo opens.

Note: Percentage includes an average 4% mileage deduction for Yard mileage and Vehicle Testing.

Metro Green Line



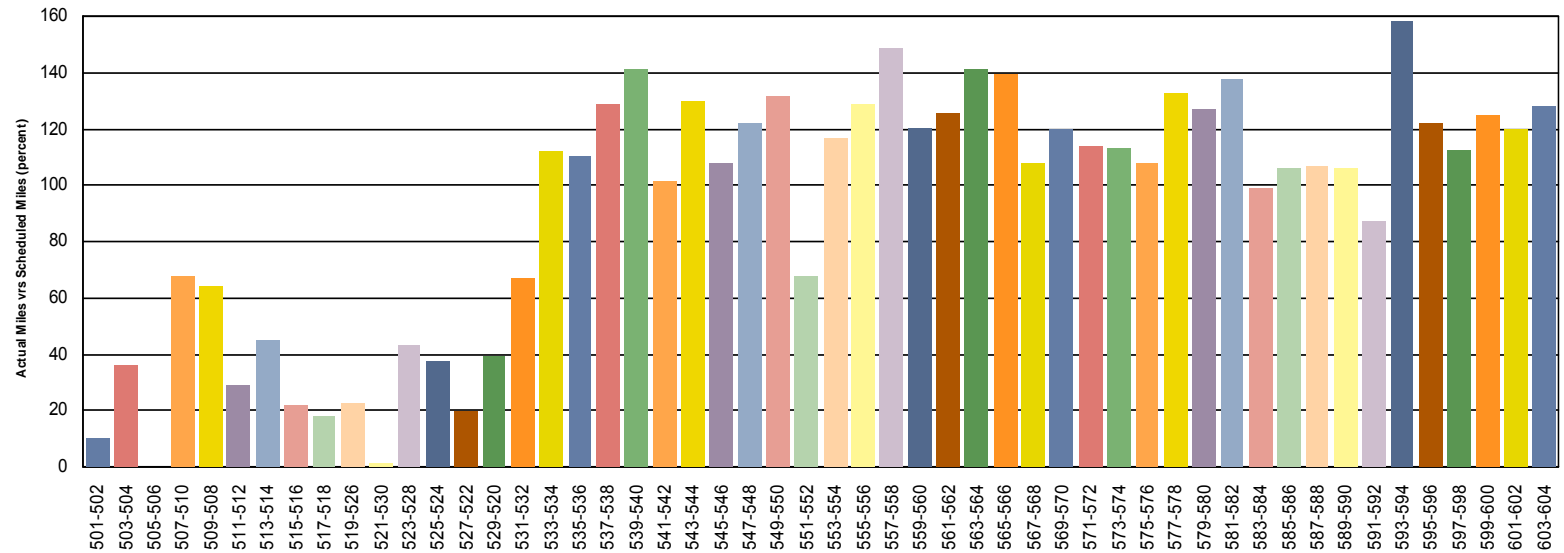
Vehicle Utilization

April 2011

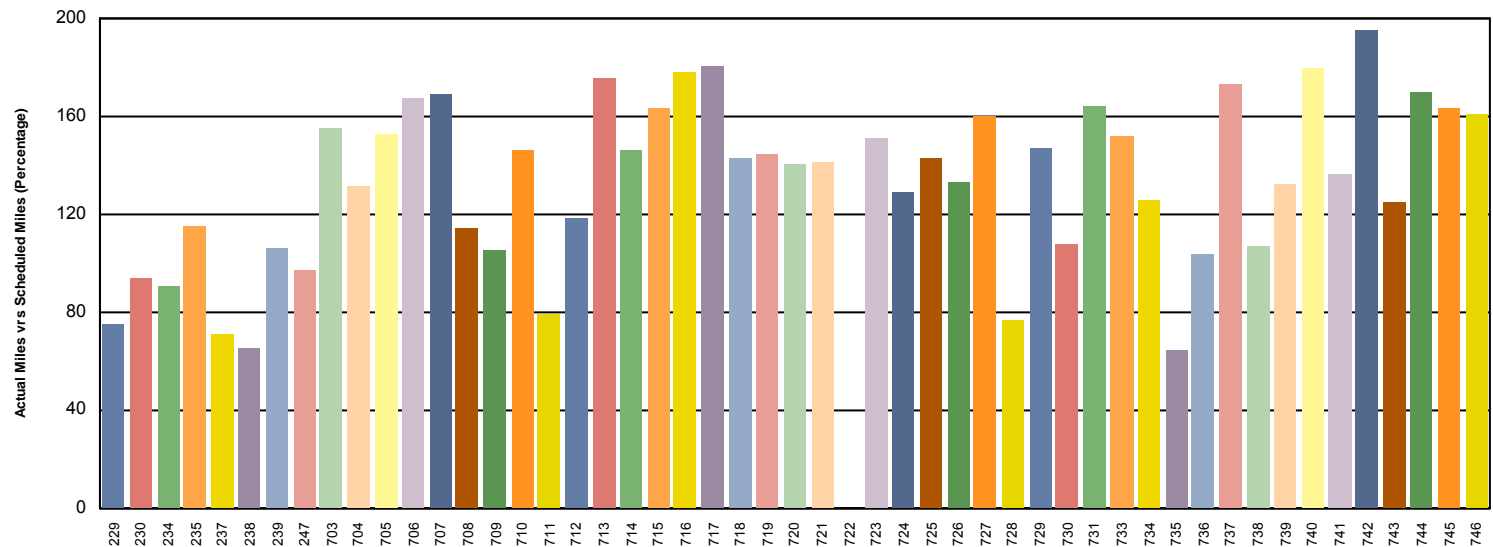
Red Line – Vehicles 501-502, 505-506, 521-530, and 523-528 are flagged as low vehicle utilization due to Base-Buy fleet having propulsion and brake problems.

Percentage includes an average 4% mileage deduction for Yard mileage and Vehicle Testing.

Metro Red Line



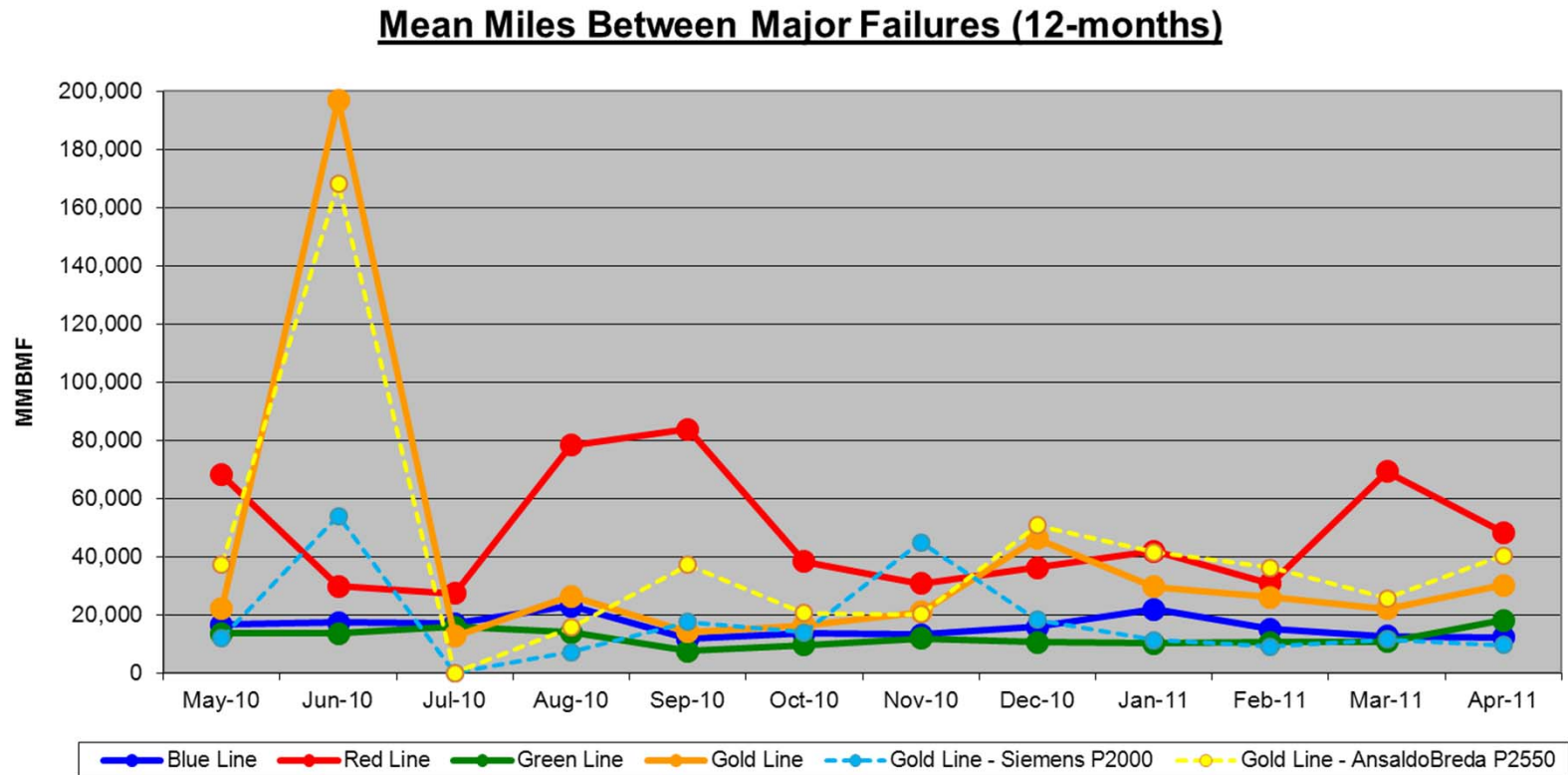
Metro Gold Line



Gold Line – P2000 cars (2xx) are in the process of being moved to the Blue Line for use on the new Expo Line

Car 722 has been out of service awaiting parts from AnsaldoBreda

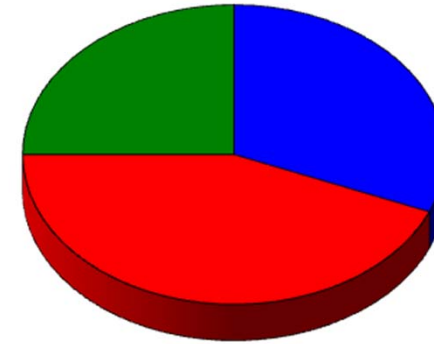
Mean Miles Between Failures (Major) April 2011



| Apr-11 | Total Vehicle Miles | Major Failures | Minor Failures | Total System Failures | No Problem Found | No Problem Found (%) | MMBF (Major) | MMBF (Minor) | MMBF (TOTAL) |
|------------|---------------------|----------------|----------------|-----------------------|------------------|----------------------|--------------|--------------|--------------|
| Blue Line | 404,495 | 33 | 108 | 141 | 32 | 23% | 12,257 | 3,745 | 2,869 |
| Red Line | 531,800 | 11 | 157 | 168 | 29 | 17% | 48,345 | 3,387 | 3,165 |
| Green Line | 215,741 | 12 | 95 | 107 | 16 | 15% | 17,978 | 2,271 | 2,016 |
| Gold Line | 271,301 | 9 | 70 | 79 | 25 | 32% | 30,145 | 3,876 | 3,434 |
| P2000 | 28,876 | 3 | 23 | 26 | 9 | 35% | 9,625 | 1,255 | 1,111 |
| P2550 | 242,425 | 6 | 47 | 53 | 16 | 30% | 40,404 | 5,158 | 4,574 |

Repeat Failures (Major) April 2011

Metro Blue Line: 5 Repeat Failures
Metro Red Line: 7 Repeat Failures
Metro Green Line: 4 Repeat Failures
Metro Gold Line: 0 Repeat Failure



■ Blue Line
 ■ Red Line
 ■ Green Line
 ■ Gold Line

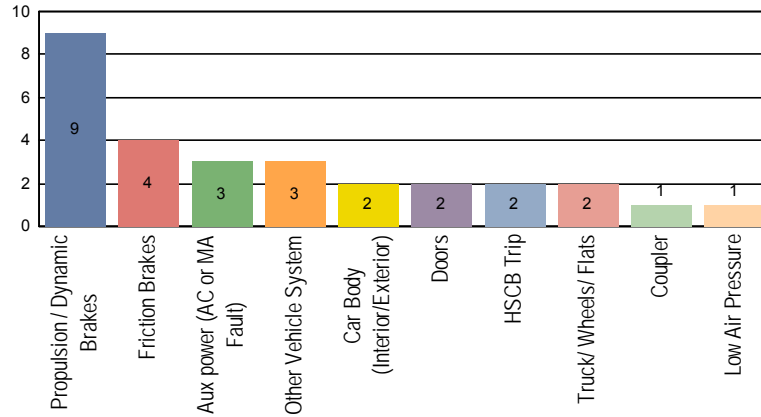
| Repeater Car Details - April 2011 | | | | | | | | |
|-----------------------------------|-----------|---------|----------|---------|------------|---------|-----------|---------|
| System | Blue Line | | Red Line | | Green Line | | Gold Line | |
| | Car # | Repeats | Car # | Repeats | Car # | Repeats | Car # | Repeats |
| Car Body (Mirror) | | | | | 212 | 2 | | |
| Doors | 108 | 1 | | | | | | |
| | 131 | 1 | | | | | | |
| | 144 | 2 | | | | | | |
| HVAC | | | 531 * | 1 | | | | |
| Propulsion/Dynamic Brake | | | 520 | 1 | 207 * | 1 | | |
| | | | 559 | 3 | 208 | 1 | | |
| PA/Intercom | | | 601 | 1 | | | | |
| Radio | 143 | 1 | | | | | | |
| Truck | | | 592 | 1 | | | | |
| TOTALS | 5 | | 7 | | 4 | | 0 | |

* Also a Repeater last month

Major Incidents April 2011

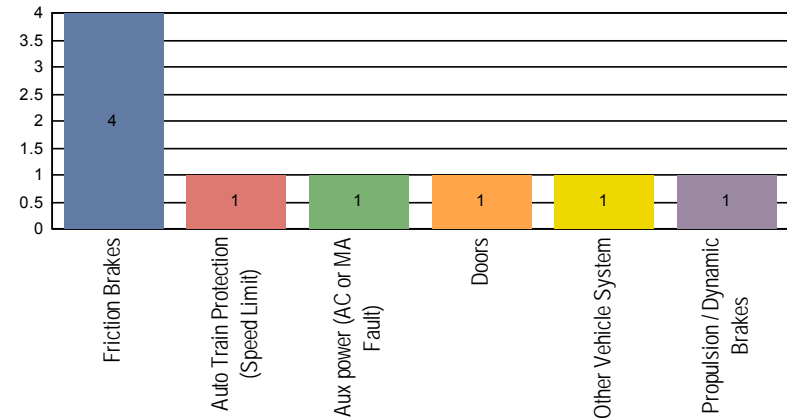
Metro Blue Line

Top Incident Categories



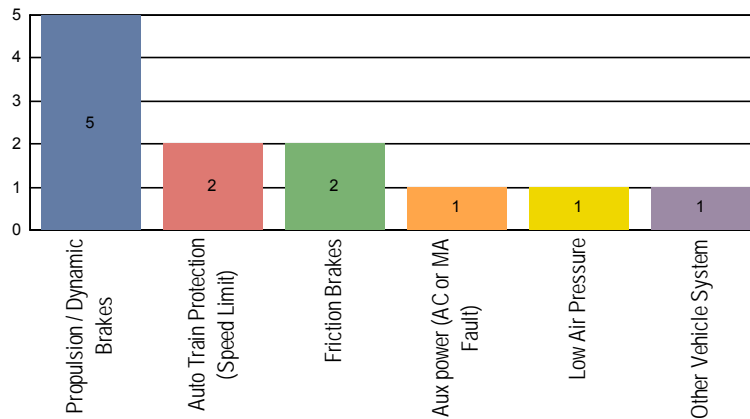
Metro Red Line

Top Incident Categories



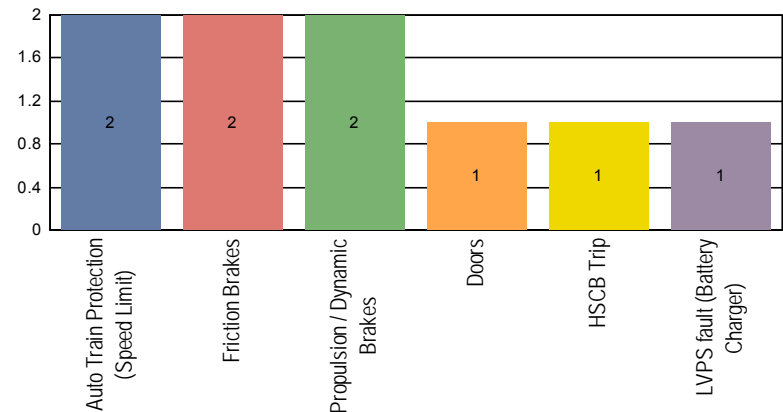
Metro Green Line

Top Incident Categories



Metro Gold Line

Top Incident Categories



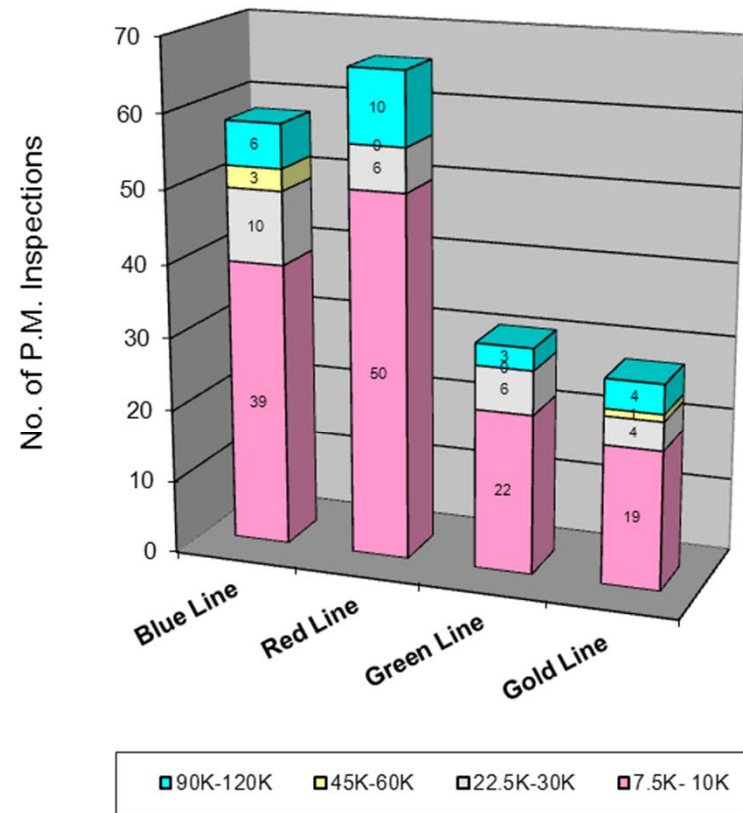
Preventative Maintenance Compliance

April 2011

| PM Compliance | May-10 | Jun-10 | Jul-10 | Aug-10 | Sep-10 | Oct-10 | Nov-10 | Dec-10 | Jan-11 | Feb-11 | Mar-11 | Apr-11 |
|---------------|--------|--------|--------|--------|--------|--------|--------|--------|--------|--------|--------|--------|
| Blue Line | 100% | 100% | 100% | 100% | 100% | 100% | 100% | 100% | 100% | 100% | 100% | 100% |
| Red Line | 100% | 100% | 100% | 100% | 100% | 100% | 97% | 100% | 100% | 97% | 100% | 100% |
| Green Line | 100% | 100% | 100% | 100% | 100% | 100% | 100% | 100% | 100% | 100% | 100% | 100% |
| Gold Line | 100% | 100% | 100% | 100% | 100% | 100% | 100% | 100% | 100% | 100% | 100% | 100% |

April 2011 Preventative Maintenance Inspections

| No. of P.M. Inspections | 7.5K-10K | 22.5K-30K | 45K-60K | 90K-120K | Totals |
|-------------------------|----------|-----------|---------|----------|--------|
| Blue Line | 39 | 10 | 3 | 6 | 58 |
| Red Line | 50 | 6 | 0 | 10 | 66 |
| Green Line | 22 | 6 | 0 | 3 | 31 |
| Gold Line | 19 | 4 | 1 | 4 | 28 |
| Totals: | 130 | 26 | 4 | 23 | 183 |

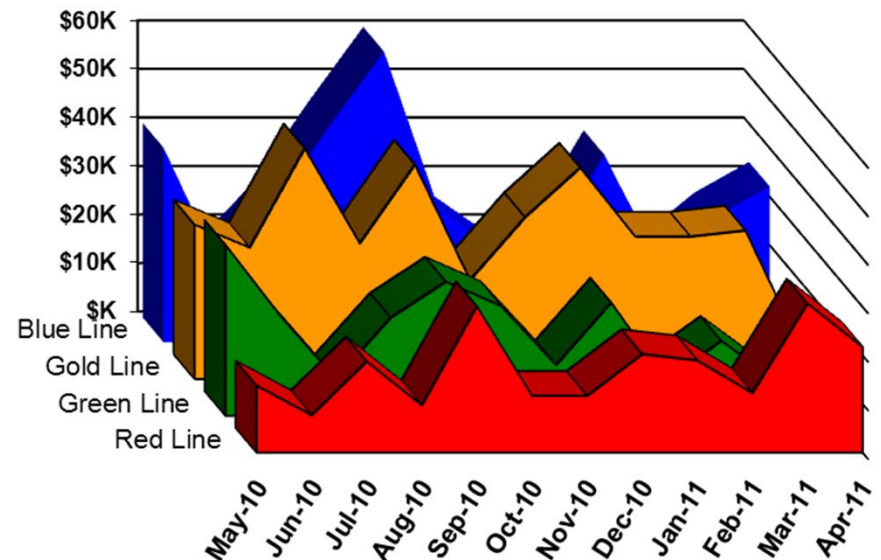


Vandalism & Graffiti Report

April 2011

| | May-10 | Jun-10 | Jul-10 | Aug-10 | Sep-10 | Oct-10 | Nov-10 | Dec-10 | Jan-11 | Feb-11 | Mar-11 | Apr-11 | Year-to-Date |
|-------------|--------|--------|--------|--------|--------|--------|--------|--------|--------|--------|--------|--------|--------------|
| Blue Line * | \$40K | \$16K | \$28K | \$44K | \$60K | \$27K | \$19K | \$20K | \$39K | \$16K | \$26K | \$32K | \$367K |
| Red Line | \$14K | \$8K | \$19K | \$10K | \$30K | \$12K | \$12K | \$20K | \$19K | \$12K | \$31K | \$22K | \$208K |
| Green Line | \$35K | \$21K | \$8K | \$20K | \$28K | \$23K | \$10K | \$23K | \$7K | \$15K | \$7K | \$8K | \$205K |
| Gold Line | \$32K | \$27K | \$48K | \$28K | \$44K | \$20K | \$33K | \$44K | \$29K | \$29K | \$31K | \$7K | \$372K |
| Totals: | \$121K | \$71K | \$102K | \$102K | \$162K | \$82K | \$75K | \$107K | \$94K | \$73K | \$94K | \$68K | \$1,152K |

| April 2011 Vandalism & Graffiti - All Rail | | | | |
|--|-------|----------|-----------|----------|
| | Qty | Labor | Materials | Totals |
| Windows replaced | 8 | \$1,907 | \$1,863 | \$3,770 |
| Vandal Shields | 391 | \$11,624 | \$4,548 | \$16,172 |
| Seats Cleaned | 759 | \$2,379 | \$0 | \$2,379 |
| Seats Replaced | 259 | \$8,159 | \$10,739 | \$18,898 |
| Graffiti removal - other | 1,068 | \$24,361 | \$2,555 | \$26,916 |
| Totals for April 2011 | | \$48,429 | \$19,706 | \$68,134 |



* Blue Line totals include vandalism & graffiti removal from the P2000 cars that will soon be used on the Expo Line.

Graffiti Pictures

April 2011

Blue Line



Green Line

Panel etching



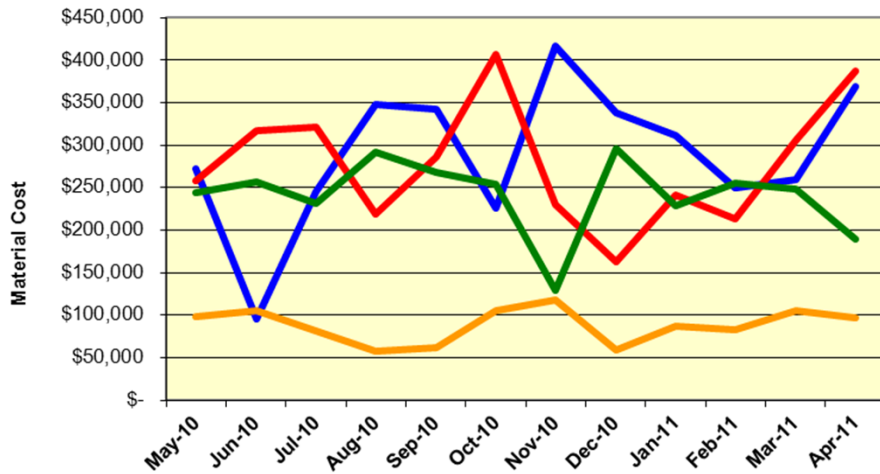
Blue Line

Material and Labor Costs

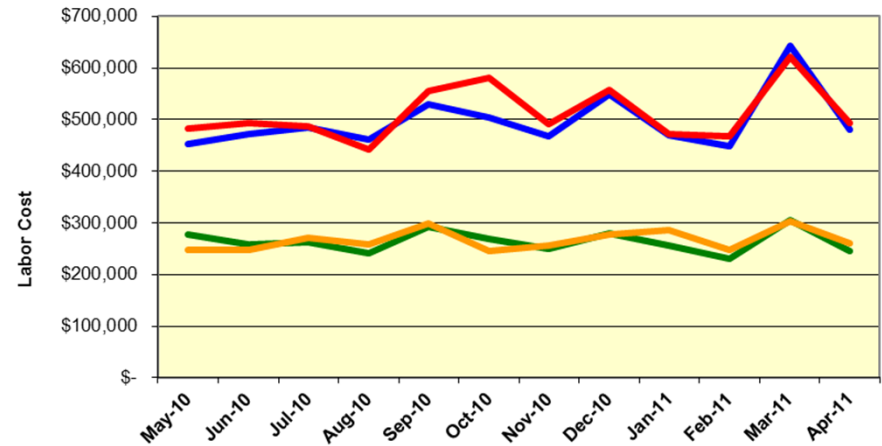
April 2011

| MATERIALS | May-10 | Jun-10 | Jul-10 | Aug-10 | Sep-10 | Oct-10 | Nov-10 | Dec-10 | Jan-11 | Feb-11 | Mar-11 | Apr-11 |
|------------|------------|------------|------------|------------|------------|------------|------------|------------|------------|------------|------------|--------------|
| Blue Line | \$ 272,347 | \$ 94,924 | \$ 245,000 | \$ 347,681 | \$ 341,681 | \$ 225,412 | \$ 416,656 | \$ 337,959 | \$ 311,345 | \$ 249,678 | \$ 259,887 | \$ 368,467 |
| Red Line | \$ 258,558 | \$ 317,139 | \$ 321,375 | \$ 219,030 | \$ 285,906 | \$ 406,465 | \$ 230,298 | \$ 162,960 | \$ 240,990 | \$ 213,323 | \$ 305,345 | \$ 386,455 |
| Green Line | \$ 244,408 | \$ 256,000 | \$ 231,296 | \$ 291,938 | \$ 267,489 | \$ 253,619 | \$ 128,574 | \$ 295,924 | \$ 228,636 | \$ 255,578 | \$ 247,907 | \$ 189,460 |
| Gold Line | \$ 98,102 | \$ 105,801 | \$ 81,897 | \$ 57,693 | \$ 61,673 | \$ 104,711 | \$ 117,573 | \$ 58,796 | \$ 86,984 | \$ 82,141 | \$ 105,452 | \$ 96,824 |
| Totals | \$ 873,415 | \$ 773,864 | \$ 879,567 | \$ 916,342 | \$ 956,749 | \$ 990,206 | \$ 893,102 | \$ 855,640 | \$ 867,955 | \$ 800,720 | \$ 918,591 | \$ 1,041,206 |

Material Costs



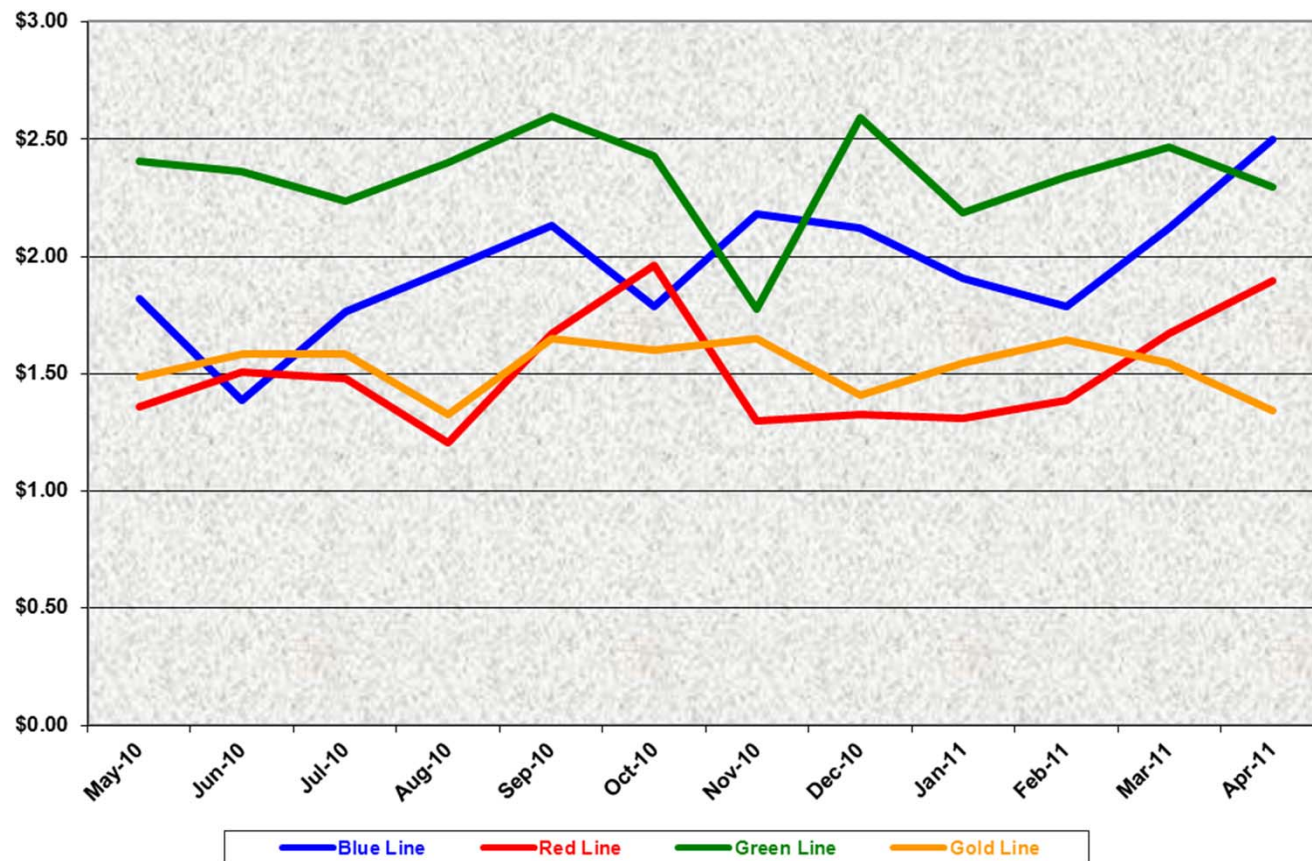
Labor Costs



| LABOR | May-10 | Jun-10 | Jul-10 | Aug-10 | Sep-10 | Oct-10 | Nov-10 | Dec-10 | Jan-11 | Feb-11 | Mar-11 | Apr-11 |
|------------|-------------|-------------|-------------|-------------|-------------|-------------|-------------|-------------|-------------|-------------|-------------|-------------|
| Blue Line | \$ 451,979 | \$ 472,293 | \$ 484,536 | \$ 462,218 | \$ 529,087 | \$ 504,876 | \$ 466,805 | \$ 549,827 | \$ 470,555 | \$ 447,928 | \$ 642,540 | \$ 480,658 |
| Red Line | \$ 482,974 | \$ 492,936 | \$ 487,742 | \$ 442,482 | \$ 555,982 | \$ 581,709 | \$ 491,124 | \$ 556,636 | \$ 472,105 | \$ 467,849 | \$ 622,201 | \$ 493,104 |
| Green Line | \$ 276,665 | \$ 258,297 | \$ 262,563 | \$ 241,807 | \$ 291,569 | \$ 269,647 | \$ 249,736 | \$ 279,447 | \$ 255,429 | \$ 230,329 | \$ 305,821 | \$ 244,809 |
| Gold Line | \$ 247,474 | \$ 247,000 | \$ 271,885 | \$ 257,900 | \$ 299,833 | \$ 245,423 | \$ 255,054 | \$ 278,165 | \$ 285,821 | \$ 248,537 | \$ 303,998 | \$ 259,784 |
| Totals | \$1,459,092 | \$1,470,526 | \$1,506,727 | \$1,404,407 | \$1,676,471 | \$1,601,654 | \$1,462,719 | \$1,664,075 | \$1,483,910 | \$1,394,643 | \$1,874,560 | \$1,478,355 |

Cost Per Mile April 2011

| Cost per mile: | May-10 | Jun-10 | Jul-10 | Aug-10 | Sep-10 | Oct-10 | Nov-10 | Dec-10 | Jan-11 | Feb-11 | Mar-11 | Apr-11 | Average |
|----------------|--------|--------|--------|--------|--------|--------|--------|--------|--------|--------|--------|--------|---------|
| Blue Line | \$1.82 | \$1.39 | \$1.77 | \$1.95 | \$2.13 | \$1.79 | \$2.18 | \$2.12 | \$1.91 | \$1.79 | \$2.12 | \$2.50 | \$1.96 |
| Red Line | \$1.36 | \$1.51 | \$1.48 | \$1.21 | \$1.67 | \$1.96 | \$1.30 | \$1.33 | \$1.31 | \$1.39 | \$1.67 | \$1.90 | \$1.51 |
| Green Line | \$2.41 | \$2.36 | \$2.24 | \$2.40 | \$2.60 | \$2.43 | \$1.78 | \$2.59 | \$2.19 | \$2.34 | \$2.47 | \$2.30 | \$2.34 |
| Gold Line | \$1.49 | \$1.59 | \$1.59 | \$1.33 | \$1.65 | \$1.60 | \$1.65 | \$1.41 | \$1.55 | \$1.65 | \$1.55 | \$1.35 | \$1.53 |



No facility costs are included

Absences vs. Overtime

April 2011

| ABSENCE TYPE and HOURS | 3940 | 3941 | 3942 | 3943 | 3944 | Total |
|--------------------------------------|-------------|--------------|--------------|--------------|--------------|--------------|
| BER-BEREAVEMENT | 0.00 | 16.00 | 88.00 | 24.00 | 0.00 | 128.00 |
| CTO-COMPENSATORY TIME OFF | 4.00 | 396.00 | 352.00 | 89.93 | 136.00 | 977.93 |
| CVA - CASUAL VACATION | 16.00 | 0.00 | 600.00 | 0.00 | 84.00 | 700.00 |
| EFH-EMG. FLOAT HOL. | 0.00 | 0.00 | 96.00 | 32.00 | 0.00 | 128.00 |
| ETO-EXCUSED TIME OFF | 0.00 | 33.50 | 30.13 | 12.00 | 27.00 | 102.63 |
| FML-FAMILY CARE LEAVE | 0.00 | 64.00 | 292.00 | 476.00 | 200.00 | 1,032.00 |
| HLF-HOLIDAY FLOATING | 72.00 | 280.00 | 208.00 | 128.00 | 96.00 | 784.00 |
| II-INDUSTRIAL INJURY | 0.00 | 354.00 | 0.00 | 68.00 | 0.00 | 422.00 |
| JUR-JURY DUTY | 0.00 | 56.00 | 8.00 | 0.00 | 8.00 | 72.00 |
| LC1-LABOR CODE 233 | 0.00 | 406.50 | 234.98 | 96.00 | 160.00 | 897.48 |
| LTI-OCCPIL/LONGTRM INJ LEAVE | 0.00 | 0.00 | 0.00 | 0.00 | 176.00 | 176.00 |
| MLN-MILITARY ABSENCE-UNPAID | 0.00 | 0.00 | 176.00 | 0.00 | 0.00 | 176.00 |
| OWP-OFF WITH PERMISSION | 0.00 | 0.00 | 16.00 | 0.00 | 8.00 | 24.00 |
| RTO-REQUESTED TIME OFF-NO PAY | 0.00 | 2.00 | 0.00 | 8.00 | 0.00 | 10.00 |
| SCK-SICK PAY | 8.00 | 159.13 | 200.50 | 90.17 | 72.00 | 529.80 |
| SCW-SICK WITHOUT PAY | 0.00 | 94.87 | 0.00 | 8.00 | 8.00 | 110.87 |
| VAC-VACATION | 120.00 | 532.00 | 288.00 | 197.00 | 242.00 | 1,379.00 |
| Total Absence Hours | 220 | 2,394 | 2,590 | 1,229 | 1,217 | 7,650 |
| Number of Work Force (assigned) | 25 | 108 | 102 | 47 | 51 | 333 |
| Full Work Force hours/month | 4,333 | 18,716 | 17,677 | 8,145 | 8,838 | 57,709 |
| Absence as a % of Work Force | 5% | 13% | 15% | 15% | 14% | 13% |
| | | | | | | |
| OVERTIME TYPE and HOURS | 3940 | 3941 | 3942 | 3943 | 3944 | Total |
| CTB-COMPENSATORY TIME TO BANK | 0 | 108.19 | 90.16 | 0 | 52 | 250.35 |
| OTP-PREM OVERTIME | 196.5 | 1,526.79 | 1,303.96 | 1,290.77 | 998.19 | 5,316.21 |
| WLO-Worked Lunch Overtime | 2.00 | 19.00 | 46.00 | 61.50 | 57.00 | 185.50 |
| Total | 199 | 1654 | 1440 | 1352 | 1107 | 5752 |
| Overtime as a % of Work Force | 5% | 9% | 8% | 17% | 13% | 10% |
| | | | | | | |
| UNCOVERED ABSENCES | 3940 | 3941 | 3942 | 3943 | 3944 | Total |
| Absences FTE | 1 | 14 | 15 | 7 | 7 | 44 |
| OTP FTE | 1 | 10 | 8 | 8 | 6 | 33 |
| FTE Difference | 0 | 4 | 7 | -1 | 1 | 11 |

Rail Vehicle Engineering Project Summary

April 2011

| Major Projects | |
|---|--|
| A650 Refurbishment Expo Readiness P865/P2000 Fleets P2000 Signal Package Conversion Protran Worker Protection Device | |
| P2000 Component Overhaul P2550 Vehicle Acceptance P3010 Vehicle Acquisition MBL Overhaul MBL Auxiliary Inverter Prototype MRL Car Cleaning | |
| Technical Specifications | |
| MBL, MGL, MRL, MGD (all fleets): | P2000 HVAC Sutrak Units Overhaul Systra Contract for Expo Fleet MBL Articulation Bellow P2000 Doors P2000 Wheel/Axle Gear Box Class B Wheel Powered Axle Overhaul SOW MBL DC Air Compressor MBL Vital Relay Calibration |
| Active Test Bulletins | |
| MBL (P865/P2020): | Inspection interval investigation (5K-7.5K) Door Capacitor Replace GRS/TWC with H&K TWC Horn Journal Bearing Motor Alternator Transtechnik Inverter |
| MRL (A650 Base): | DC-AC Traction Motor Blower A21 Power Supply A16A1 Board Speed Sensor Removal Wheel - Bonatrans |
| MRL (A650 Option): | Emergency door seal Air Spring Brushes Motor Evaporator Speed Sensor Removal Traction Motor Safety Hanger |
| MGDL (P2000): | Luminator LED Destination Sign |
| MGL (P2000): | Door Operator Assembly Electric Cabinet Cooling |
| Active Modification Bulletins | |
| MBL (P865/P2020): | Watch Gap, Wheelchair, Security Cameras Battery Disconnect Decals Gearbox Long Breather Tube Flashing Circuit Protran1 |
| MBL (P2000): | Add TWC Route Select Feature No Acceleration during ATP Overspeed |
| MRL (A650 Option/Base): | Remove Trip Switch Wiring Manual Controller Modification by American Transit Front Door Latch Replace End Door Threshold Plate Dead Battery Start Buss Bar Isolation ATO Overspeed Brake Rate Bracket Power Cable Protection |
| MGL (P2000): | Master Controller with New Cam Profiles Removal of Convex Mirror Head Protran 1 Wayside Worker Protection |
| MGDL (P2000): | Battery Disconnect Decals |
| Active Technical Request Form | |
| MBL (P865/P2020): | Destination Signs Journal Bearing Chopper Intake Damper Assembly Motor Alternator Set CB1 Tripping Problem 3-Way Valve Berthing Bypass Brake Disc Edges |
| MRL (A650 Option/Base): | ATO Berthing Flender Gearbox Gate Drive Power Supply Rectifier Door Latching Relay Twist Lug Connector Thermistor & TLR Circuit Failures PA System & Air Whistle/Horn Faults Hand Assistance Strap Contact Adhesive Flooring Blower Motor Impeller Snubber Capacitor Vital Relays Calibration Berthing Bypass |
| MGL (P2000): | Door Operator Assemble Repair Vendor Air Vent Grille Exterior Rear View Mirror Sun Shade Gear Latch EMI Trip Faults HVAC Motor Sunshade Gear Latch Vital Relays Calibration |
| MGDL (P2000/P2550): | Truck Tramming Investigation Operator Door Assembly Overhaul Driver Cab Window Glass Vital Relays Calibration |

P2550 Vehicle Acceptance Program

April 2011

Vehicle Status Update:

- 45 cars at Metro
- A total of 44 Cars Conditionally Accepted (CA)
- 5 Cars at Pittsburg Assembly Plant

Engineering Activities Update:

- Event recorder – AB has recently contacted Faiveley to correct problems associated with the MVB communications; awaiting schedule to dispatch engineer to LA, qualification pending.
- Traction Motor HV Junction Box – 10 car sets completed/ installed, remaining parts due to arrive LA by June 2011.
- Brake Caliper Overhaul – 16 cars sets completed.
- Reliability Program – AB continues to review work order data, recent incidents include TCU, Friction Brakes, Doors and Controls, Communications, and Propulsion equipment. The program is on-going.
- ATP System – TWC software release 1.3 completed and awaiting release for implementation. ASTS further evaluating problems with multifunction PCB, Decelerometer and verify PCMCIA reported errors. Work is ongoing.

Production Car Status – Pittsburg:

- Car 748 – 95% complete. Final inspection in progress.
- Car 749 - 95% complete. Preliminary testing started.
- Car 750 – 85% complete. Assembly in process.
- Cars 701& 702 - Re-configuration of car in process, rewiring and repining of cables 100 % complete.

Project Management:

- One car was Conditionally Accepted in April.
- Contract spares are in process and delivered to Metro. Estimated at 80% complete, critical parts not yet delivered.
- Daily and weekly meetings with AB Project Management continue to solve revenue service issues.
- Project Team negotiated 1 year extended warranty on the fleet in lieu of late manuals, some contract spare parts, and tools and equipment.

Fleet Revenue Service Summary:

- 3.9 million miles since March 2008 - - 242,425 miles in March
- 6 mainline “Major” incidents, 2 were No Trouble Found.

QA-Warranty Program Projects Summary

April 2011

ADMINISTRATION ACTIVITIES

- Review / Signature sign-off on Certificate of Conditional Acceptance for Vehicle 747, April 29th
- RFP-3010 Technical Advisor for Warranty, QA, Testing, Materials & Workmanship Sections on-going
- Warranty Manual (2nd edition) - 50% complete
- QA Manual (2nd edition) - 50% complete
- Draft - GP Bulletin – QA Operation Instructions Rail Car Wheel Ultrasonic Testing completed. UT Vendor training 66% completed, final phase III training milestone date TBD
- Gearbox Oil Management Program Service Bulletins completed. (MGL, MBL, MRL & MGD) awaiting document routing management approval signatures.
- “Management Audit Services” to conduct a performance audit – Objective efficiency & effectiveness of maintenance of rail cars
- PMI Audit Program - Conducted MGD 120K, MBL 7.5K, MGL and MRL scheduled next month. To date: (2) MGL, (1) MRL, (2) MBL, (1) MGD
- ERS daily admin support & M3 data entry ongoing at all divisions. (1) ERS to relocate to MGD from MRL as planned
- ERS leader ensures all reports and records are archived into QA-Warranty Share Drive.

RED LINE ACTIVITIES

- T/M Mount Failures/Truck Frame Modification Campaign: Truck 171 and Truck 158 shipped to Ultra Weld.
- Engineering Support - Conduct technical request investigations on HVAC Motors, Gear Boxes, Line Breakers, Coupler Cables & Brake Systems.
- Support Division – troubleshooting problem areas on doors, brakes, propulsion systems, and PSS switch repair.
- First Article Inspections – Swiger Blowers, Tension Rods, Pamco Gear Box assembly and Maxwell lateral shocks
- Performed installation fit, form, function testing on Kawasaki air springs, Schaubt manual controller and Wabtec motor
- Conducted QA/QC Conference call Eaton regarding failed overhauled line breakers. Eaton to comply with Metro standards.
- Prepared Tech Reports, Power-Point-Presentations and FAI reports filed in archive.
- Warranty returns, R&R parts & MTA labor savings being documented to account for Cost Avoidance savings. \$13,698.00

BLUE LINE ACTIVITIES

- Support Expo Line TWC Project – continued line testing on propulsion system during off-peak hours. On Going.
- Support division - identifying equipment for overhaul, remove and replace campaigns to ensure service for next 7 to 10 years (Door Systems, Car Body, Lighting Systems, & Car interior Projects, gearbox, journal bearings, chevron springs). On Going.
- Prepared Tech Reports, Power-Point-Presentations & FAI reports filed in archive.

QA-Warranty Program Projects Summary

April 2011

BLUE LINE ACTIVITIES

- First Article inspections – Continued testing and inspection on new inverter designed by Transtechnik. Installed on Car 119, vendor loaded new software and Metro made significant voltage adjustments to meet standards. Ram Industrial motor alternator overhaul passed.
- Warranty returns, R&R parts & MTA labor savings being documented to account for Cost Avoidance savings.

GREEN LINE ACTIVITIES

- Support engineering - Conduct Technical Request investigations on Door Operations, Journal Bearing issues, and 176 box installed on train 201.
- Support Division - Troubleshooting master controller issues, Swiger T/M coils inspections, contact rings wear and tear, and CPU boards.
- Support Vendors & Contractors working on Doors, wheel press, gearbox overhauls, Traction Motors, and Gearbox & Brake Systems.
- First Article inspection and testing on Brake overhauls 93% complete. Master controller 52% complete and Vital Relays 25% complete.
- Support P2550 project and Gold Line with Siemens parts.
- Prepared Tech Reports, Power-Point-Presentations & FAI reports are filed in archive.
- Warranty returns, R&R parts & MTA labor savings being documented to account for Cost Avoidance savings. \$33,164.00

GOLD LINE ACTIVITIES

- P2550 Project - Download video incidents on (3) cars 742, 713, and 707 for management, law enforcement & administration investigations.
- P2550 Contract Programs – Car 732 and 745 inspection write ups and car acceptance. Oversee equipment testing, spare parts & warranty conditions are met.
- Travel to Pittsburgh plant to inspect and resolve open issues
- Inspected and tested Flambeau fluid systems and support body shop design on new water reservoir.
- Vendor support on Contract Spares – on going.
- Project documentation, contract deliverables & maintenance records up-to-date.
- Support ABI & RFSTS Engineering with Car Acceptance test issues and reliability tracking.
- Prepared Tech Reports, Power-Point-Presentations & FAI reports filed in archive.
- Warranty returns, R&R parts & MTA labor savings being documented to account for Cost Avoidance savings.

Rail Fleet Services Instruction

April 2011

Training classes completed during the month of April 2011

| Description | Status | Start | End | Course Hours | Student Count | Training Hours |
|---|----------|-----------|-----------|--------------|---------------|----------------|
| Blue Line Training - (865/2020 & P2000 LRV): | | | | | | |
| TRANSIT TERRORISM AWARENESS TRAINING | Complete | 4/28/2011 | 4/28/2011 | 1 | 1 | 1 |
| ANGER MANAGEMENT | Complete | 4/20/2011 | 4/20/2011 | 3 | 2 | 6 |
| RFS SIEMENS 2000 COMMUNICATIONS | Complete | 4/28/2011 | 4/29/2011 | 16 | 7 | 112 |
| RFS SIEMENS 2000 PANTOGRAPH | Complete | 4/27/2011 | 4/27/2011 | 8 | 7 | 56 |
| RFS SIEMENS 2000 LIGHTS & DEST. SIGNS | Complete | 4/26/2011 | 4/26/2011 | 8 | 7 | 56 |
| RFS SIEMENS 2000 DOOR CONTROLS | Complete | 4/19/2011 | 4/25/2011 | 40 | 7 | 280 |
| RFS SIEMENS 2000 COUPLER | Complete | 4/18/2011 | 4/18/2011 | 8 | 7 | 56 |
| RFS SIEMENS 2000 CARBODY | Complete | 4/15/2011 | 4/15/2011 | 8 | 7 | 56 |
| RFS SIEMENS 2000 VEHICLE SYSTEMS | Complete | 4/1/2011 | 4/12/2011 | 40 | 7 | 280 |
| DISABILITIES AWARENESS TRAINING | Complete | 4/28/2011 | 4/28/2011 | 2 | 1 | 2 |
| Fire Safety (Video) | Complete | 4/8/2011 | 4/8/2011 | 2 | 1 | 2 |

Total Blue Line Training (Hours): 903

Red Line Training (Breda A650 HRV):

| | | | | | | |
|---|----------|-----------|-----------|-----|---|-----|
| ADULT CPR/AED | Complete | 4/19/2011 | 4/19/2011 | 5 | 1 | 5 |
| EMS SOP: JAYNE PRODUCTS SCALE REMOVER (JP-S | Complete | 4/20/2011 | 4/20/2011 | 1 | 5 | 5 |
| UNIVERSITY OF LA VERNE INFORMATION SESSION | Complete | 4/13/2011 | 4/13/2011 | 1.5 | 1 | 1.5 |
| ETD PC 101 ESSENTIAL CONCEPTS | Complete | 4/21/2011 | 4/21/2011 | 3 | 1 | 3 |

Total Red Line Training (Hours): 14.5

Green Line Training (P2000 LRVs):

| | | | | | | |
|-------------------------------------|----------|-----------|-----------|----|---|----|
| PRE-SUPERVISORY TRAINING | Complete | 4/7/2011 | 4/15/2011 | 14 | 3 | 42 |
| MANAGERIAL AND SUPERVISORY TRAINING | Complete | 4/19/2011 | 4/21/2011 | 12 | 1 | 12 |
| ETD PEOPLE SKILLS | Complete | 4/6/2011 | 4/6/2011 | 3 | 1 | 3 |

Total Green Line Training (Hours): 57

Gold Line Training (P2550 LRVs):

| | | | | | | |
|-----------------------------|----------|-----------|-----------|----|---|----|
| RFS ANSALDOBREDA 2550 DOORS | Complete | 4/12/2011 | 4/15/2011 | 32 | 2 | 64 |
|-----------------------------|----------|-----------|-----------|----|---|----|

Total Gold Line Training (Hours): 64

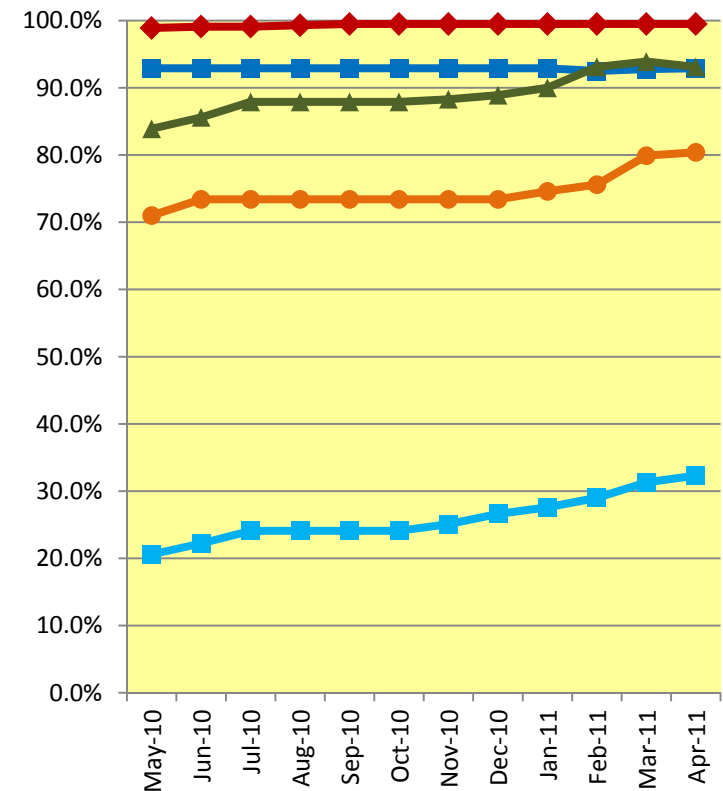
Total Rail Fleet Services Instruction for the month of April 2011 (Hours): 1,038.5

Core Vehicle Training Completed:

| | <u>BLUE</u> | <u>RED</u> | <u>GREEN</u> | <u>GOLD</u> |
|--|--------------------|-------------------|---------------------|--------------------|
| Percentage of core vehicle training complete: | 92.9% | 99.5% | 93.1% | 80.4% |
| Siemens 2000 training complete: | 32.3% | N/A | N/A | N/A |

Average Specialist Rail Experience Level in Years: **11.6** **11.5** **8.5** **9.6**

Core Training Completed



- Red/Purple Line (Breda A650)
- Blue Line (P865/P2020)
- Expo Line (Siemens P2000)
- Green Line (Siemens P2000)
- Gold Line (AnsaldoBreda P2550)

Variations caused by new hires, employee transfers, & training completed