



# **Rail Fleet Services Monthly Report August 2011**

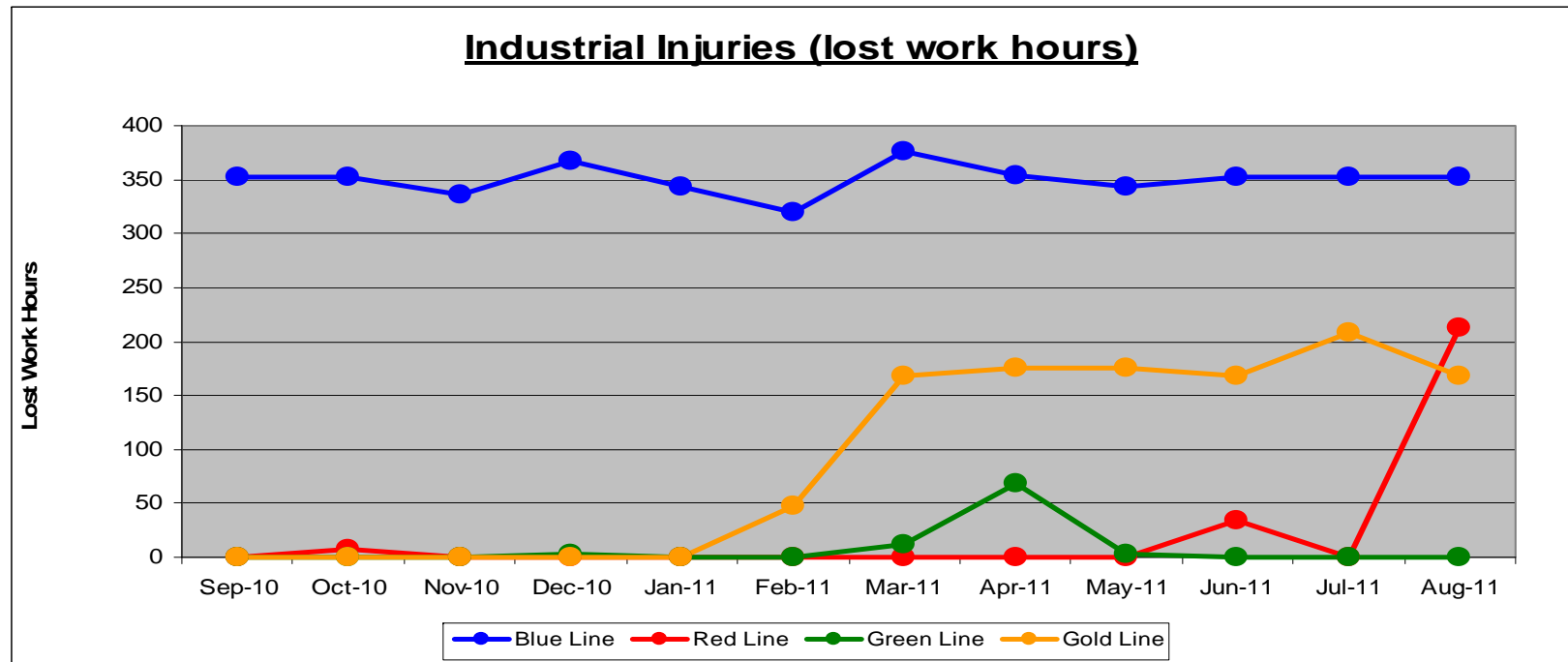


**Metro**

# Table of Contents

•	Safety	
	- Industrial Injuries	Page 3
	- Rail Vehicle Accidents & Major Incidents	Page 4
•	Customer Service	
	- Service Delivery – AM/PM Pull-Outs	Page 5
	- Vehicle Utilization – Blue Line & Green Line	Page 6
	- Vehicle Utilization – Red Line & Gold Line	Page 7
	- Mean Miles Between Failures (Major)	Page 8
	- Repeat Failures	Page 9
•	Business Processes	
	- Major Incidents	Page 10
	- Preventive Maintenance Compliance	Page 11
•	Finance	
	- Vandalism & Graffiti Costs	Page 12
	- Graffiti Pictures	Page 13
	- Material & Labor Costs	Page 14
	- Cost per mile	Page 15
	- Absence vs. Overtime	Page 16
•	Engineering	
	- Rail Vehicle Engineering Project Summary	Page 17
	- P2550 Vehicle Acceptance Program	Page 18
•	Quality Assurance	
	- Warranty Program Projects Summary	Page 19
•	Growth	
	- RFS Instruction Department Activities	Page 20

# Industrial Injuries – Lost Work Hours August 2011



	Employees		August 2011 Lost Work Hours			
	Assigned	Active	Service Attendant	Maint. Specialist	Body Repairer /Painter	Total Hrs.
Blue Line	112	104	0	168	184	352
Red Line	105	100	136	77	0	213
Green Line	48	45	0	0	0	0
Gold Line	50	47	168	0	0	168
Eng/QA/Admin	25	25	0	0	0	0
Totals	340	321	304	245	184	733

# Rail Vehicle Accidents & Major Incidents

## August 2011

Repair Costs	Sep-10	Oct-10	Nov-10	Dec-10	Jan-11	Feb-11	Mar-11	Apr-11	May-11	Jun-11	Jul-11	Aug-11	Totals
Blue Line	\$916	\$4,781	\$10,716	\$16,938	\$961	\$2,114	\$684	\$26,990	\$4,844	\$189	\$0	\$395	\$69,528
Red Line	\$0	\$0	\$0	\$562	\$0	\$0	\$0	\$0	\$0	\$0	\$0	\$0	\$562
Green Line	\$0	\$0	\$0	\$0	\$0	\$0	\$0	\$0	\$0	\$0	\$0	\$0	\$0
Gold Line	\$441	\$4,286	\$3,016	\$1,374	\$239	\$13	\$4,031	\$0	\$0	\$5,458	\$3,763	\$2,567	\$25,188
Totals	\$1,357	\$9,067	\$13,732	\$18,874	\$1,200	\$2,127	\$4,715	\$26,990	\$4,844	\$5,647	\$3,763	\$2,962	\$95,278

Rail Vehicle Accident Costs - August 2011				
<b>Metro Blue Main Line</b>				
Date	Incident #	Problem code	Incident Description	Cost
8/5/2011	2041826	Train vs. Vehicle	10-73 at Washington and Naomi. Train operator states that driver of vehicle made a left turn against the red light.	\$206.00
8/29/2011	2041975	Train vs. MTA Vehicle	Operator T-47 and Operator T-163 involved in a 10-74 on the east run-around track. Operator T-163 uncoupled without authorization Car 162 from Car 148. Operator T-47 uncoupled without authorization Car 148 from Car 153 and made contact with Car 162.	\$189.00
<b>TOTAL FOR METRO BLUE LINE</b>				<b>\$395.00</b>
<b>Metro Gold Line</b>				
Date	Incident #	Problem code	Incident Description	Cost
8/6/2011	2041973	Train vs. Vehicle	Train 10 reported of 10-73 on Track 2 southbound on Downey Road at I-60 Freeway (T-270).	\$2,378.00
8/9/2011	2042866	Train vs. Vehicle	10-73 reported at 1st Street and Mission southbound T-133, Train 15, operating from car 229B (consist 229/230).	\$189.00
<b>TOTAL FOR METRO GOLD LINE</b>				<b>\$2,567.00</b>
<b>GRAND TOTAL</b>				<b>2,962.00</b>
(10-71) = Train vs. Object, (10-72) = Train vs. Pedestrian, (10-73) = Train vs. Vehicle (10-74) = Train vs. MTA Vehicle, (10-75) = Derailment				

# Service Delivery August 2011

## Blue Line – Fleet Size 69 cars

	<u>Vehicles Required</u>	<u>Average Available</u>	<u>% Up (Down)</u>
Pull Out			
Weekday:	60	63	105%
Weekend:	36	40	111%

Late Pullouts: 0 \*

Monthly Mileage: 418,325 miles

## Expo Line – Fleet Size 21 cars

**Expo Revenue Operations Date (ROD) to be determined.**

## Red Line - Fleet Size 104 cars

	<u>Vehicles Required</u>	<u>Average Available</u>	<u>% Up (Down)</u>
Pull Out			
Weekday:	70	78	111%
Weekend:	48	66	138%

Late Pullouts: 0 \*

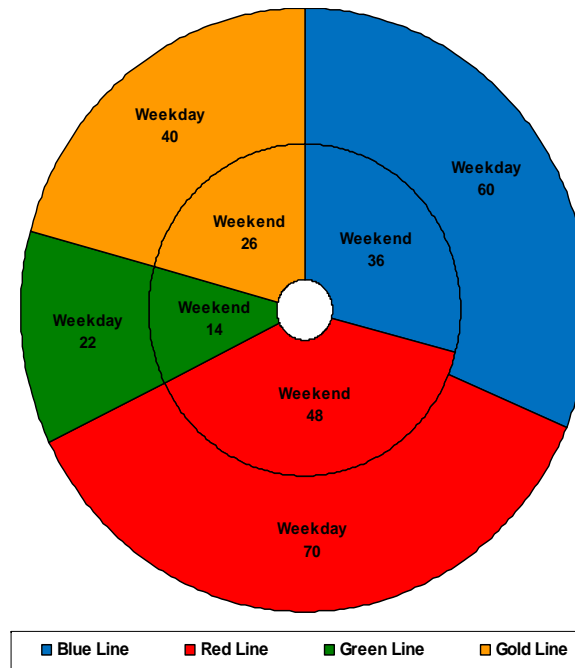
Monthly Mileage: 556,656 miles

## Green Line – Fleet Size 29 cars

	<u>Vehicles Required</u>	<u>Average Available</u>	<u>% Up (Down)</u>
Pull Out			
Weekday:	22	24	109%
Weekend:	14	22	157%

Late Pullouts: 0 \*

Monthly Mileage: 231,718 miles



## Gold Line – Fleet Size 49 cars

### P2550 – Fleet Size 47 cars

### P2000 – Fleet Size 2 cars

	<u>Vehicles Required</u>	<u>Average Available</u>	<u>% Up (Down)</u>
Pull Out			
Weekday:	40	41	103%
Weekend:	26	41	158%

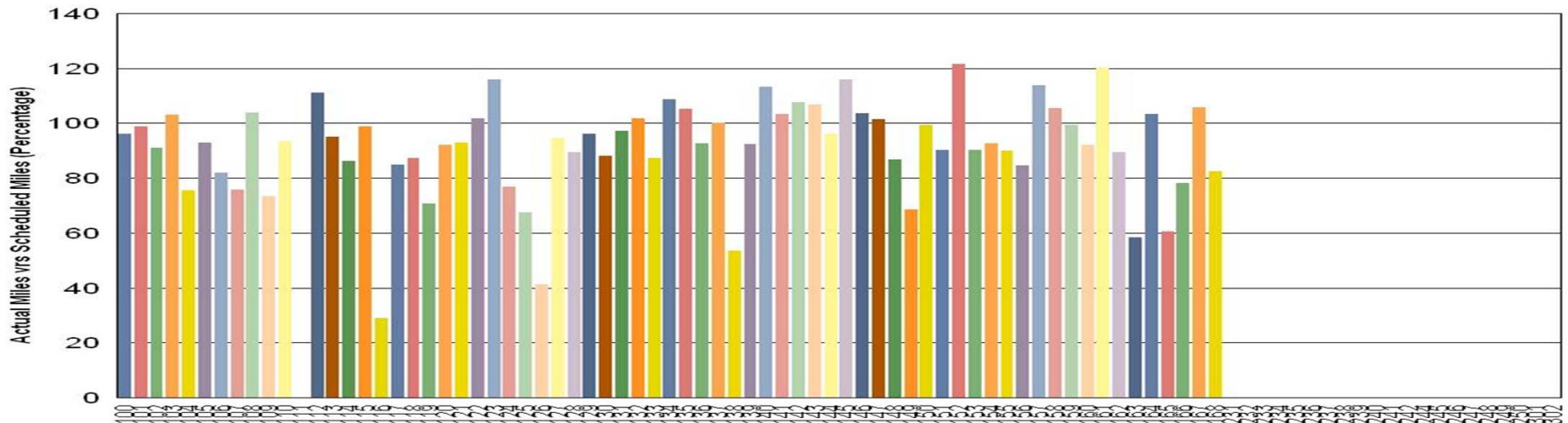
Late Pullouts: 0 \*

Monthly Mileage: 286,304 miles

\* Due to a vehicle related problem

# Vehicle Utilization August 2011

## Metro Blue/Expo Line Fleet

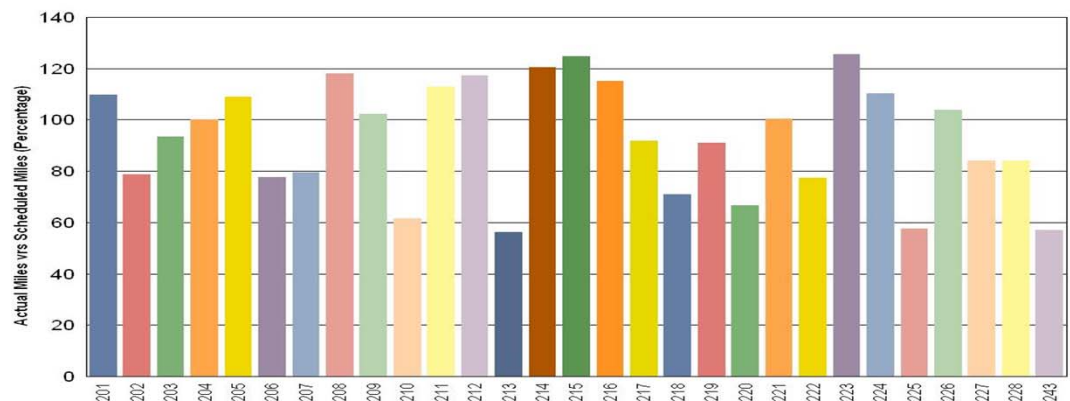


**Blue Line** – Vehicle 111 was out of service due to articulation overhaul, friction brake overhaul, and a motor alternator overhaul.

**Expo Line** - The entire Expo Fleet (all 15 cars, 231-302) are not in revenue service at this time. Mileage will be minimal each month until the Expo Line opens.

**Green Line** – The fleet has met the daily maximum utilization requirement for the month of August.

## Metro Green Line



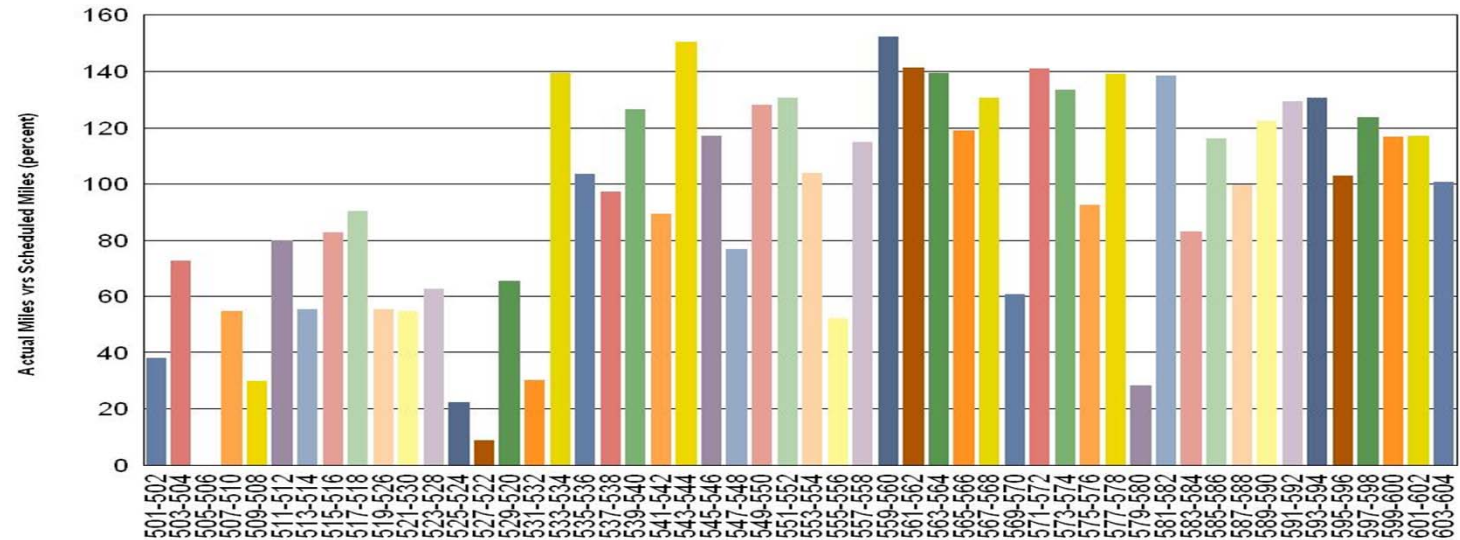
*Note: Percentage includes an average 4% mileage deduction for yard mileage and vehicle testing.*

# Vehicle Utilization August 2011

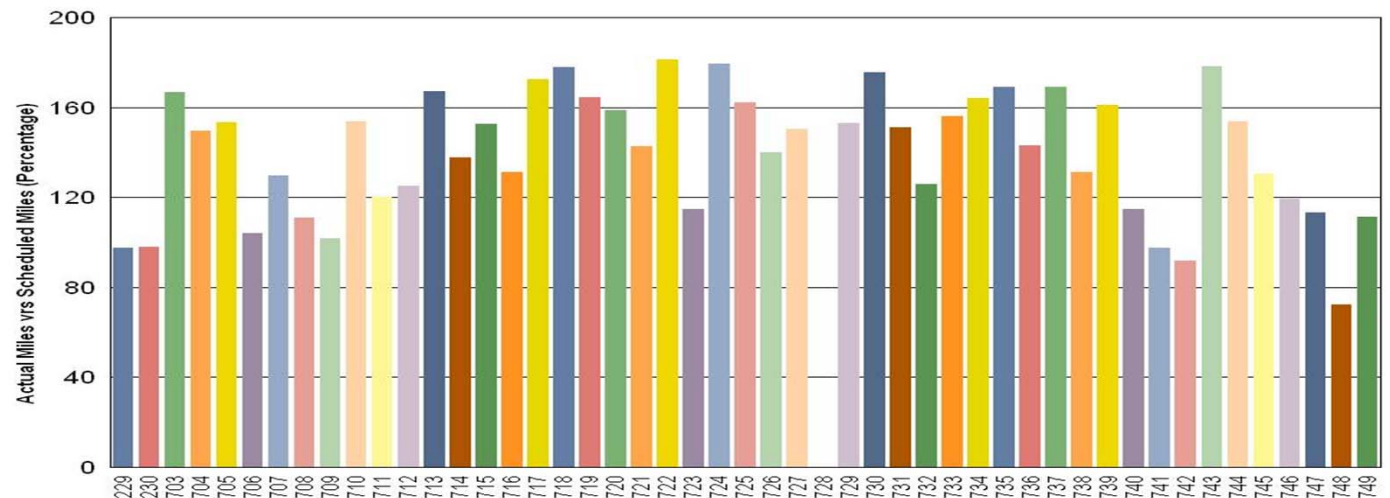
## Explanation for under-used vehicles:

- 501-502 – Inspections (90k) on open work orders.
- 505-506 - Long term rebuild program
- 509-508 - Propulsion faults
- 525-524 - Propulsion faults
- 527-522 - Propulsion faults
- 531-532 - HVAC project/Friction brake overhaul.
- 579-580 - Propulsion faults

### Metro Red Line



### Metro Gold Line

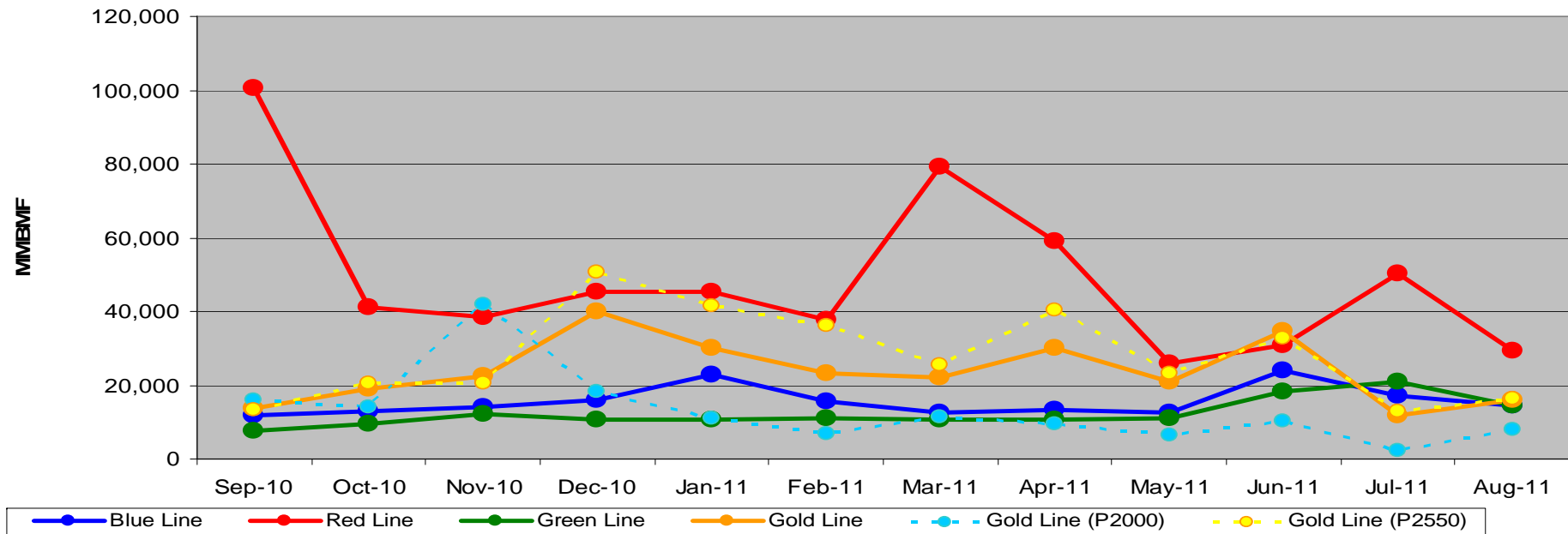


Gold Line – Vehicle 728 remains out of service due to yard derailment. Repairs were started on 8/26/11.

•Percentage includes an average 4% mileage deduction for Yard mileage and Vehicle Testing.

# Mean Miles Between Failures (Major) Year to Date

**Mean Miles Between Major Failures (11-months)**



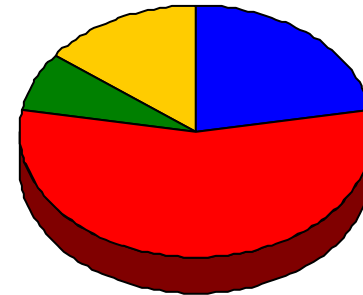
	Sep-10	Oct-10	Nov-10	Dec-10	Jan-11	Feb-11	Mar-11	Apr-11	May-11	Jun-11	Jul-11	Aug-11
Blue Line	11,679	13,065	13,936	16,095	22,749	15,601	12,500	13,483	12,557	24,050	17,123	14,425
Red Line	100,589	41,239	38,293	45,211	45,357	37,732	79,178	59,089	26,084	30,932	50,099	29,298
Green Line	7,693	9,527	12,173	10,575	10,535	11,163	10,687	10,787	10,882	18,177	20,877	14,482
Gold Line	13,670	18,887	22,664	39,858	30,095	23,095	22,044	30,145	20,776	34,792	11,668	15,906
Gold Line (P2000)	15,935	14,002	42,007	18,326	11,208	6,689	11,413	9,625	6,377	10,351	2,153	8,019
Gold Line (P2550)	13,147	20,515	20,515	50,625	41,426	36,220	25,588	40,404	23,394	32,767	13,095	16,370

**Major Failure:** When a train does not complete its scheduled run or is more than 5 minutes late of its scheduled arrival time.



# Repeat Failures August 2011

**Metro Blue Line:** 6 Repeat Failures  
**Metro Red Line:** 15 Repeat Failures  
**Metro Green Line:** 2 Repeat Failures  
**Metro Gold Line:** 4 Repeat Failures



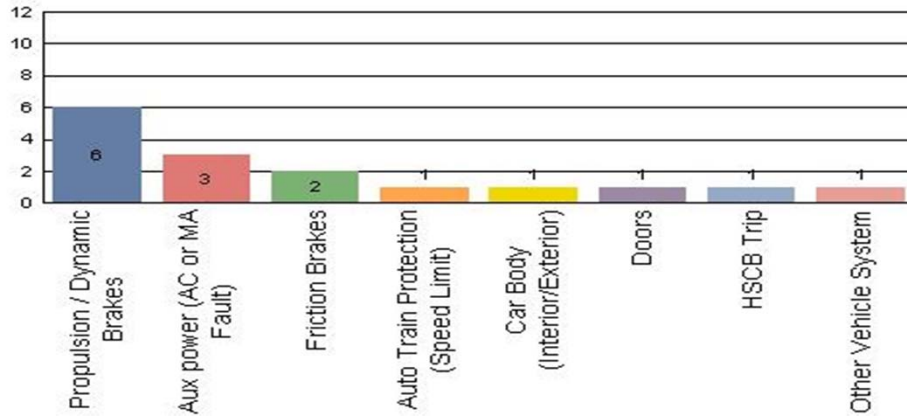
■ Blue Line 
 ■ Red Line 
 ■ Green Line 
 ■ Gold Line

Repeater Car Details - August 2011								
System	Blue Line		Red Line		Green Line		Gold Line	
	Car #	Repeats	Car #	Repeats	Car #	Repeats	Car #	Repeats
Automatic Train Protection					205	2	716	3
Aux power (AC or MA Fault)	109	1						
Doors	131	1	536	1			749	1
			584	1				
Friction Brakes			567	1				
HVAC	104	3	510	1				
			583	1				
Propulsion/Dynamic Brake	119	1	510	1				
			569	2				
			579	5				
			580	2				
TOTALS	6		15		2		4	

# Major Incidents August 2011

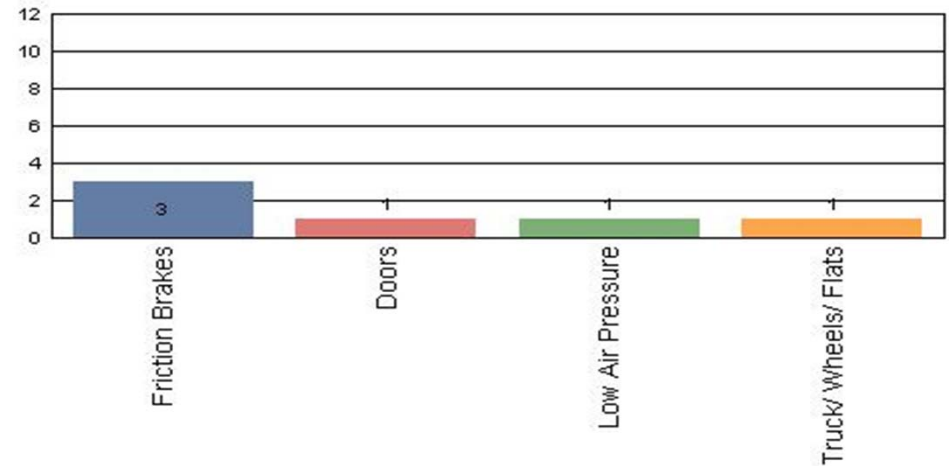
## Metro Blue Line

Top Incident Categories



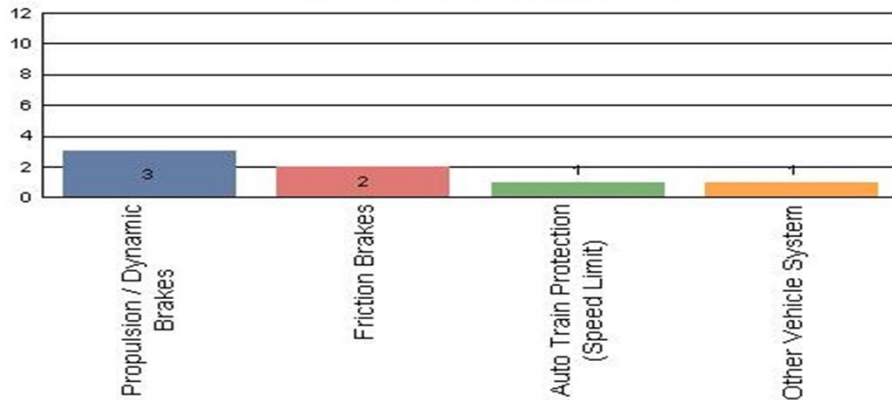
## Metro Red Line

Top Incident Categories



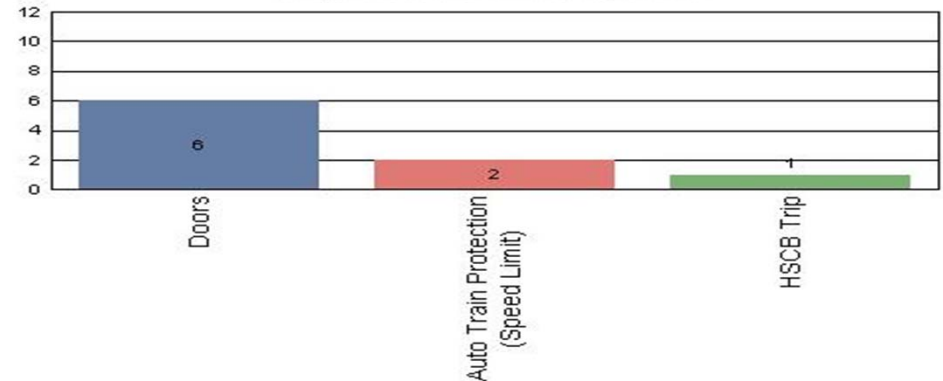
## Metro Green Line

Top Incident Categories



## Metro Gold Line

Top Incident Categories



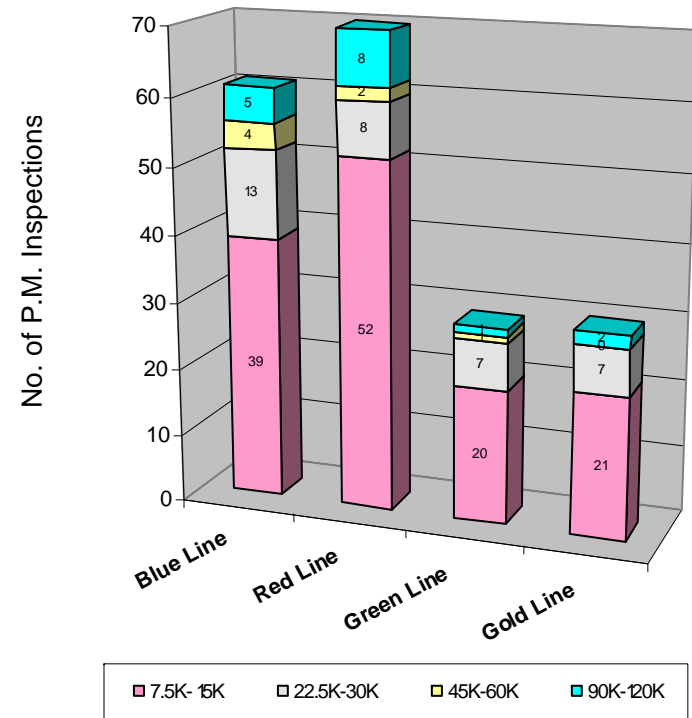
# Preventive Maintenance Compliance

## August 2011

PM Compliance	Sep-10	Oct-10	Nov-10	Dec-10	Jan-11	Feb-11	Mar-11	Apr-11	May-11	Jun-11	Jul-11	Aug-11
Blue Line	100%	100%	100%	100%	100%	100%	100%	100%	100%	100%	100%	100%
Red Line	97%	91%	97%	100%	100%	97%	100%	100%	90%	100%	100%	100%
Green Line	100%	100%	100%	100%	100%	100%	100%	100%	100%	100%	100%	100%
Gold Line	100%	100%	100%	100%	100%	100%	100%	100%	100%	100%	100%	100%

August 2011 Preventive Maintenance Inspections

No. of P.M. Inspections	7.5K-15K	22.5K-30K	45K-60K	90K-120K	Totals
Blue Line	39	13	4	5	61
Red Line	52	8	2	8	70
Green Line	20	7	1	1	29
Gold Line	21	7	0	2	30
Totals:	132	35	7	16	190

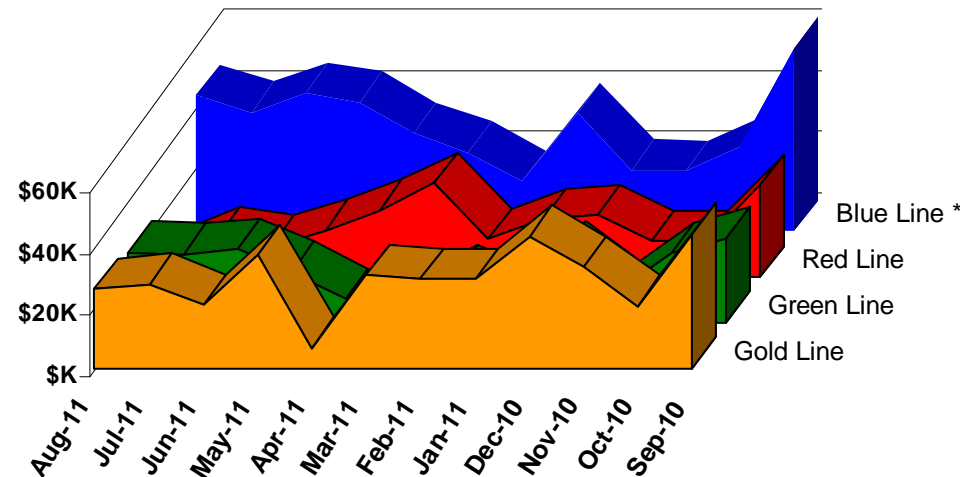


# Vandalism & Graffiti Report

## August 2011

	Sep-10	Oct-10	Nov-10	Dec-10	Jan-11	Feb-11	Mar-11	Apr-11	May-11	Jun-11	Jul-11	Aug-11	Year-to-Date
Blue Line *	\$60K	\$27K	\$19K	\$20K	\$39K	\$16K	\$26K	\$32K	\$42K	\$45K	\$39K	\$44K	\$410K
Red Line	\$30K	\$12K	\$12K	\$20K	\$19K	\$12K	\$31K	\$22K	\$15K	\$10K	\$13K	\$6K	\$201K
Green Line	\$28K	\$23K	\$10K	\$23K	\$7K	\$15K	\$7K	\$8K	\$16K	\$24K	\$22K	\$23K	\$208K
Gold Line	\$44K	\$20K	\$33K	\$44K	\$29K	\$29K	\$31K	\$7K	\$37K	\$21K	\$28K	\$26K	\$349K
Totals:	\$162K	\$82K	\$75K	\$107K	\$94K	\$73K	\$94K	\$68K	\$111K	\$100K	\$102K	\$99K	\$1,168K

August 2011 Vandalism & Graffiti - All Rail				
	Qty	Labor	Materials	Totals
Windows replaced	38	\$5,229	\$10,324	\$15,553
Vandal Shields	458	\$13,103	\$4,198	\$17,301
Seats Cleaned	720	\$1,880	\$0	\$1,880
Seats Replaced	117	\$3,644	\$4,222	\$7,866
Graffiti removal - other	609	\$9,889	\$1,703	\$11,592
Repainting panels	2	\$36,962	\$8,147	\$45,109
Totals for August 2011	1,944	\$70,707	\$28,594	\$99,301



\* Blue Line totals include vandalism & graffiti removal from the P2000 cars that will soon be used on the Expo Line.

# Graffiti Pictures August 2011

Blue Line



Green Line



Gold Line

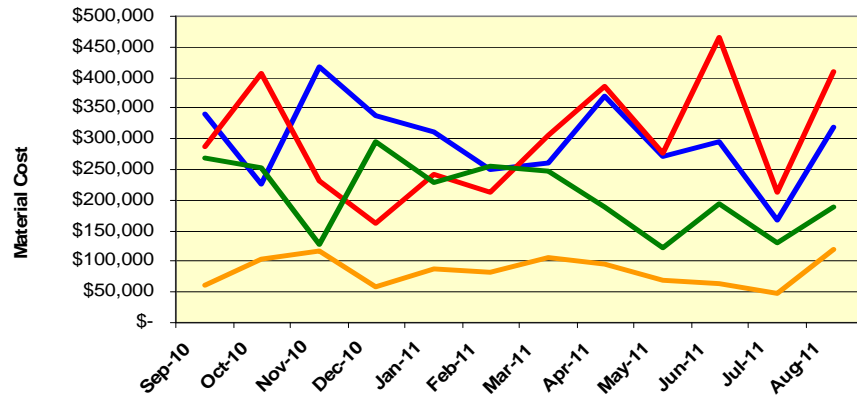


# Material and Labor Costs

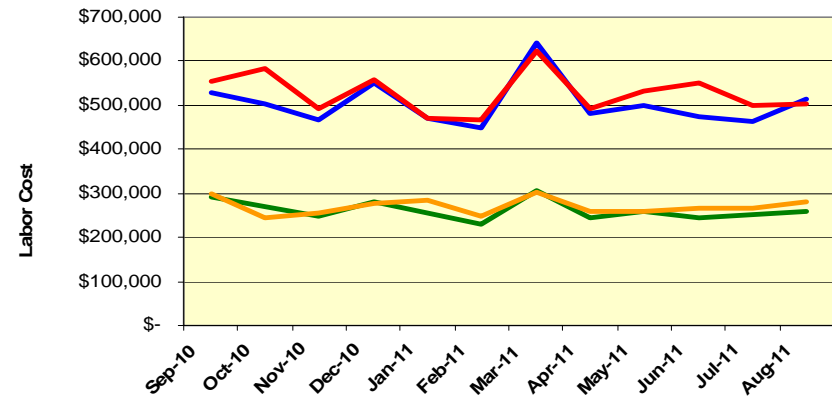
## August 2011

MATERIALS	Sep-10	Oct-10	Nov-10	Dec-10	Jan-11	Feb-11	Mar-11	Apr-11	May-11	Jun-11	Jul-11	Aug-11
Blue Line	\$ 341,681	\$ 225,412	\$ 416,656	\$ 337,959	\$ 311,345	\$ 249,678	\$ 259,887	\$ 368,467	\$ 272,272	\$ 294,179	\$ 167,328	\$ 318,296
Red Line	\$ 285,906	\$ 406,465	\$ 230,298	\$ 162,960	\$ 240,990	\$ 213,323	\$ 305,345	\$ 386,455	\$ 277,113	\$ 466,346	\$ 212,074	\$ 410,299
Green Line	\$ 267,489	\$ 253,619	\$ 128,574	\$ 295,924	\$ 228,636	\$ 255,578	\$ 247,907	\$ 189,460	\$ 121,859	\$ 194,750	\$ 129,976	\$ 187,997
Gold Line	\$ 61,673	\$ 104,711	\$ 117,573	\$ 58,796	\$ 86,984	\$ 82,141	\$ 105,452	\$ 96,824	\$ 67,967	\$ 64,397	\$ 47,760	\$ 118,401
Totals	\$ 956,749	\$ 990,206	\$ 893,102	\$ 855,640	\$ 867,955	\$ 800,720	\$ 918,591	\$ 1,041,206	\$ 739,212	\$ 1,019,672	\$ 557,138	\$ 1,034,993

Material Costs



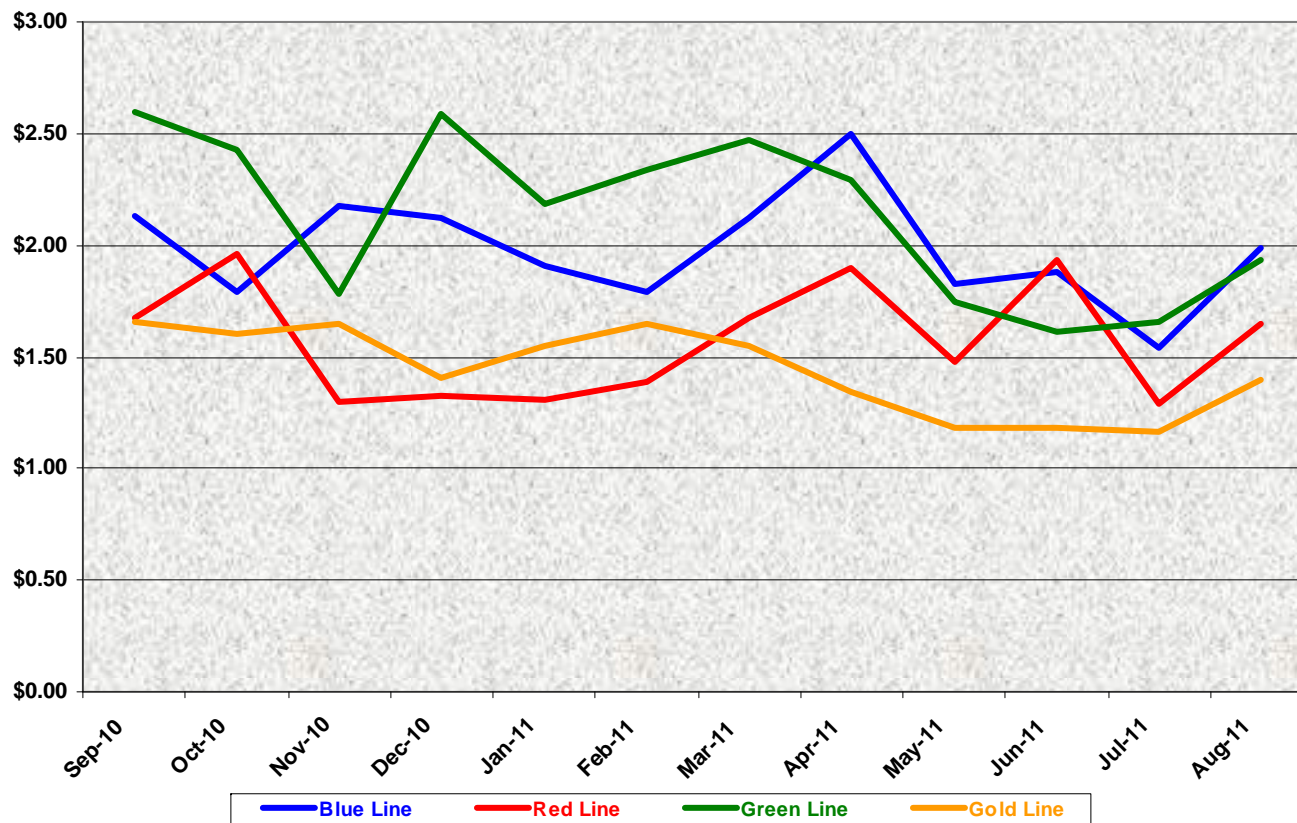
Labor Costs



LABOR	Sep-10	Oct-10	Nov-10	Dec-10	Jan-11	Feb-11	Mar-11	Apr-11	May-11	Jun-11	Jul-11	Aug-11
Blue Line	\$ 529,087	\$ 504,876	\$ 466,805	\$ 549,827	\$ 470,555	\$ 447,928	\$ 642,540	\$ 480,658	\$ 500,263	\$ 475,354	\$ 464,468	\$ 513,406
Red Line	\$ 555,982	\$ 581,709	\$ 491,124	\$ 556,636	\$ 472,105	\$ 467,849	\$ 622,201	\$ 493,104	\$ 531,171	\$ 550,464	\$ 500,504	\$ 504,785
Green Line	\$ 291,569	\$ 269,647	\$ 249,736	\$ 279,447	\$ 255,429	\$ 230,329	\$ 305,821	\$ 244,809	\$ 257,678	\$ 243,969	\$ 250,617	\$ 259,629
Gold Line	\$ 299,833	\$ 245,423	\$ 255,054	\$ 278,165	\$ 285,821	\$ 248,537	\$ 303,998	\$ 259,784	\$ 257,114	\$ 264,854	\$ 265,256	\$ 280,715
Totals	\$ 1,676,471	\$ 1,601,654	\$ 1,462,719	\$ 1,664,075	\$ 1,483,910	\$ 1,394,643	\$ 1,874,560	\$ 1,478,355	\$ 1,546,225	\$ 1,534,641	\$ 1,480,845	\$ 1,558,535

# Cost Per Mile August 2011

Cost per mile:	Sep-10	Oct-10	Nov-10	Dec-10	Jan-11	Feb-11	Mar-11	Apr-11	May-11	Jun-11	Jul-11	Aug-11	Average
Blue Line	\$2.13	\$1.79	\$2.18	\$2.12	\$1.91	\$1.79	\$2.12	\$2.50	\$1.83	\$1.88	\$1.54	\$1.99	\$1.98
Red Line	\$1.67	\$1.96	\$1.30	\$1.33	\$1.31	\$1.39	\$1.67	\$1.90	\$1.48	\$1.93	\$1.29	\$1.64	\$1.57
Green Line	\$2.60	\$2.43	\$1.78	\$2.59	\$2.19	\$2.34	\$2.47	\$2.30	\$1.74	\$1.61	\$1.66	\$1.93	\$2.14
Gold Line	\$1.65	\$1.60	\$1.65	\$1.41	\$1.55	\$1.65	\$1.55	\$1.35	\$1.18	\$1.18	\$1.17	\$1.39	\$1.44



No facility costs are included

# Absences vs. Overtime

## August 2011

<b>ABSENCE TYPE and HOURS</b>	<b>3940</b>	<b>3941</b>	<b>3942</b>	<b>3943</b>	<b>3944</b>	<b>Total</b>
AWP-ABSENT W/O PERMISSION	0.00	8.00	0.00	0.00	0.00	8.00
BER-BEREAVEMENT	0.00	0.00	0.00	0.00	24.00	24.00
CTO-COMPENSATORY TIME OFF	0.00	150.00	56.00	52.00	98.00	356.00
CVA - CASUAL VACATION	0.00	1,028.00	717.60	0.00	196.00	1,941.60
EFH-EMG. FLOAT HOL.	0.00	16.00	72.00	72.00	16.00	176.00
ETO-EXCUSED TIME OFF	2.50	39.00	15.08	2.50	32.77	91.85
FML-FAMILY CARE LEAVE	184.00	1,048.00	318.77	43.00	32.00	1,625.77
HLF-HOLIDAY FLOATING	56.00	400.00	464.00	192.00	280.00	1,392.00
II-INDUSTRIAL INJURY	0.00	352.00	213.00	0.00	0.00	565.00
JUR-JURY DUTY	0.00	32.00	152.00	0.00	8.00	192.00
LC1-LABOR CODE 233	32.00	142.00	91.74	104.00	48.00	417.74
LTI-OCCPIL/LONGTRM INJ LEAVE	0.00	0.00	0.00	0.00	168.00	168.00
MLN-MILITARY ABSENCE-UNPAID	0.00	0.00	184.00	8.00	0.00	192.00
RTO-REQUESTED TIME OFF-NO PAY	0.00	16.00	0.00	0.00	0.00	16.00
SCK-SICK PAY	16.00	72.00	168.00	40.00	72.00	368.00
SCW-SICK WITHOUT PAY	0.00	8.00	0.00	20.00	0.00	28.00
SPN-SCHOOL PARTNER NOT	0.00	0.00	0.00	1.50	0.00	1.50
UB-UNION BUSINESS	0.00	0.00	0.00	8.00	0.00	8.00
VAC-VACATION	156.00	540.00	1,072.00	496.00	494.00	2,758.00
<b>Total Absence Hours</b>	<b>447</b>	<b>3,851</b>	<b>3,524</b>	<b>1,039</b>	<b>1,469</b>	<b>10,329</b>
Number of Work Force (assigned)	<b>25</b>	<b>112</b>	<b>105</b>	<b>48</b>	<b>50</b>	<b>340</b>
Full Work Force hours/month	<b>4,333</b>	<b>19,410</b>	<b>18,197</b>	<b>8,318</b>	<b>8,665</b>	<b>58,922</b>
<b>Absence as a % of Work Force</b>	<b>10%</b>	<b>20%</b>	<b>19%</b>	<b>12%</b>	<b>17%</b>	<b>18%</b>
<b>OVERTIME TYPE and HOURS</b>	<b>3940</b>	<b>3941</b>	<b>3942</b>	<b>3943</b>	<b>3944</b>	<b>Total</b>
CTB-COMPENSATORY TIME TO BANK	0	314	285	164	136	899
OTP-PREM OVERTIME	392	1458	2181	715	1015	5761
WLO-Worked Lunch Overtime	2	29	95	65	67	257
<b>Total</b>	<b>394</b>	<b>1801</b>	<b>2561</b>	<b>944</b>	<b>1218</b>	<b>6917</b>
<b>Overtime as a % of Work Force</b>	<b>9%</b>	<b>9%</b>	<b>14%</b>	<b>11%</b>	<b>14%</b>	<b>12%</b>
<b>UNCOVERED ABSENCES</b>	<b>3940</b>	<b>3941</b>	<b>3942</b>	<b>3943</b>	<b>3944</b>	<b>Total</b>
Absences FTE	3	22	20	6	8	60
OTP FTE	2	10	15	5	7	40
<b>FTE Difference</b>	<b>1</b>	<b>12</b>	<b>5</b>	<b>1</b>	<b>1</b>	<b>20</b>



# Rail Vehicle Engineering Project Summary

## August 2011

### Major Projects and Activities – August 2011:

#### Active Projects (% Complete):

- P2550 Vehicle Procurement (95%)
- P865/P2020 EXPO Readiness (15%)
- A650 Friction Brake Kit Overhaul (7%)
- P865/P2020 Traction Motor Overhaul (3.6%)
- A650 Truck Modification with new 4 bolt design Traction Motor Mount - ABI (15%)
- MA Set Overhaul (7%)
- P3010 Contractor Solicitation (10%)
- Pro-tran1 Worker Protection – All Lines (44%)
- P2000 Friction Brake Kit Overhaul (56%)
- P865/P2020 DC Air Compressor Motor Overhaul (30%)
- A650 New Handrail – Bike Space (1%)
- P865/P2020 Component Overhaul (6%)
- A650 Car Cleaning (15%)
- P865/P2020 Vital Relay Calibration (6%)
- P2000 New LED Destination Sign Prototype (100%)
- P2000 Vital Relay Calibration (27%)

#### Projects In Development:

- A650 Refurbishment
- Bike Space – All Lines
- P865/P2020 Auxiliary Static Inverter
- P2000 Signal Package Conversion
- A650 Ribbed Rubber Flooring PRF
- P2000 Master Controller Overhaul
- P2000 Component Overhaul
- P2000 Powered Axle Overhaul SOW

#### Projects In Concept Stage:

- P2000 HVAC Suttrak Units Overhaul Specification
- Systra Contract for Expo Fleet (ATP Safety Certification)
- A650 Tread Brake Unit (HPT) Upgrade (Yellow HPT)
- P2000 Doors Overhaul Specification
- A650 Option GE Gear Unit Overhaul Spec.
- P2000 Friction Brake Kit Overhaul Spec – Excluding Air Compressor
- P2000 Slewing Ring Overhaul

#### Fleet Projects:

- 38 Technical Request Forms (TRF)
- 34 Test Bulletins
- 24 Modification Bulletins

# P2550 Vehicle Acceptance Program

## August 2011

### **Vehicle Status Update:**

- 48 cars at Metro of which 47 have been Conditionally Accepted and 20 have been Final Accepted
- 2 Prototype cars remain at AB's assembly site in Pittsburg being updated to latest configuration

### **Engineering Activities Update:**

- Event recorder: Configuration continues to be finalized; however, on-site support from AB-Italy and Faiveley is required to resolve final technical issues.
- ATP/TWC Board Failures: A-STS developed new software to address issues with the multifunction PCB. Field testing was performed in August 2011. As a result of the software change most "bad" boards are now working. A-STS is continuing its investigation on the remaining failures.
- Decelerometer Failures: A-STS is currently qualifying replacement decelerometers to replace those on the fleet.

### **Overhauls:**

- Brake Caliper Overhaul – 20 car-sets of calipers have been overhauled;

### **Production Car Status – Pittsburg:**

- Cars 701& 702 - Re-configuration of cars in process, rewiring and repining of cables 100 % complete; scheduled to ship to L.A. by November 2011.
- Four hold points inspections were conducted in August 2011. The results were satisfactory with only minor findings that can be addressed at a later time, prior to shipment.

### **Project Management:**

- Contract spares continue to be delivered to Metro. Estimated at 85% complete. All parts needed for day-to-day maintenance have been received. Critical parts needed for heavy repairs are scheduled to begin arriving in October 2011.
- Daily and bi-weekly meetings are scheduled with AB Management to address project issues.

# QA-Warranty Program Projects Summary

## August 2011

### QA-WARRANTY ACTIVITIES

- QA-Warranty Manpower: Two Equipment Records Specialist FTE's were posted and to be filled in September.
- Staff performed 90K PMI audit at MBL.
- Audits to Date: MRL (4), MBL (4), MGL (4), MGD (6), Vendors (3): Y2011 total = 21
- P2550 Car Modification Campaign is in full swing: QA to provide oversight.
- P2550 (Metro/ABI): QA to provide tracking trends, warranty, and parts reimbursement.
- A650 Base Buy & Option car fleet warranty – Truck frame modification campaign (18 trucks modified to date).
- MRL Warranty Cost Avoidance savings for August was \$11,244.00.
- Performed First Article Inspections (FAI's) on new brushes, destination sign curtains, brake overhaul kits and vital relays.
- Provided Tech support to vendors and contractor for overhaul program (gearboxes, traction motors, and brake systems).
- Provided Tech support for Expo Line ATP/TWC Project – Support line testing is administered on propulsion system during off-peak hours.
- Video Downloads (8 hours) – Information is needed for law enforcement and administration investigations.
- Rewrite Warranty Manual (2<sup>nd</sup> edition) – Ongoing
- Rewrite QA Manual (2<sup>nd</sup> edition) – Ongoing
- Archived all reports and records into QA-Warranty Share Drive.

# RFS Instruction Department Activities

## August 2011

### Training classes completed during the month of August 2011

Description	Course Hours	Student Count	Training Hours
<b><u>Blue &amp; Expo Line Training - (P865/2020 &amp; P2000 LRV):</u></b>			
New Employee Introduction and Safety Training	64	2	128
<b>Total Blue Line Training (Hours):</b>			<b>128</b>
<b><u>Red Line Training (Breda A650 HRV):</u></b>			
FREON RECOVERY SYSTEMS	8	4	32
HVAC Best Practices Training	32	6	192
<b>Total Red Line Training (Hours):</b>			<b>224</b>
<b><u>Green Line Training (P2000 LRVs):</u></b>			
New Employee Introduction and Safety Training	64	1	64
<b>Total Green Line Training (Hours):</b>			<b>64</b>
<b><u>Total RFS Instruction for the month of August 2011 (Hours):</u></b>			<b>416.0</b>

### Other Instruction Activities

P2550 Manual Review	160
A650 Friction Brake Overhaul and HVAC Procedure	
Documentation for Maintenance	120
A650 HVAC Best Practices Training and Development	40

**Total Other Instruction Activities** **320.0**

**Core Vehicle Training Completed:** **BLUE** **RED** **GREEN** **GOLD**

**Percentage of core vehicle training complete:** **92.9%** **99.5%** **90.1%** **78.9%**  
**Siemens P2000 training complete:** **24.1%** **N/A** **N/A** **N/A**

**Average Specialist Rail Experience Level in Years:** **11.0** **10.9** **8.6** **9.6**

### Core Training Completed

