



Rail Fleet Services Monthly Report December 2011

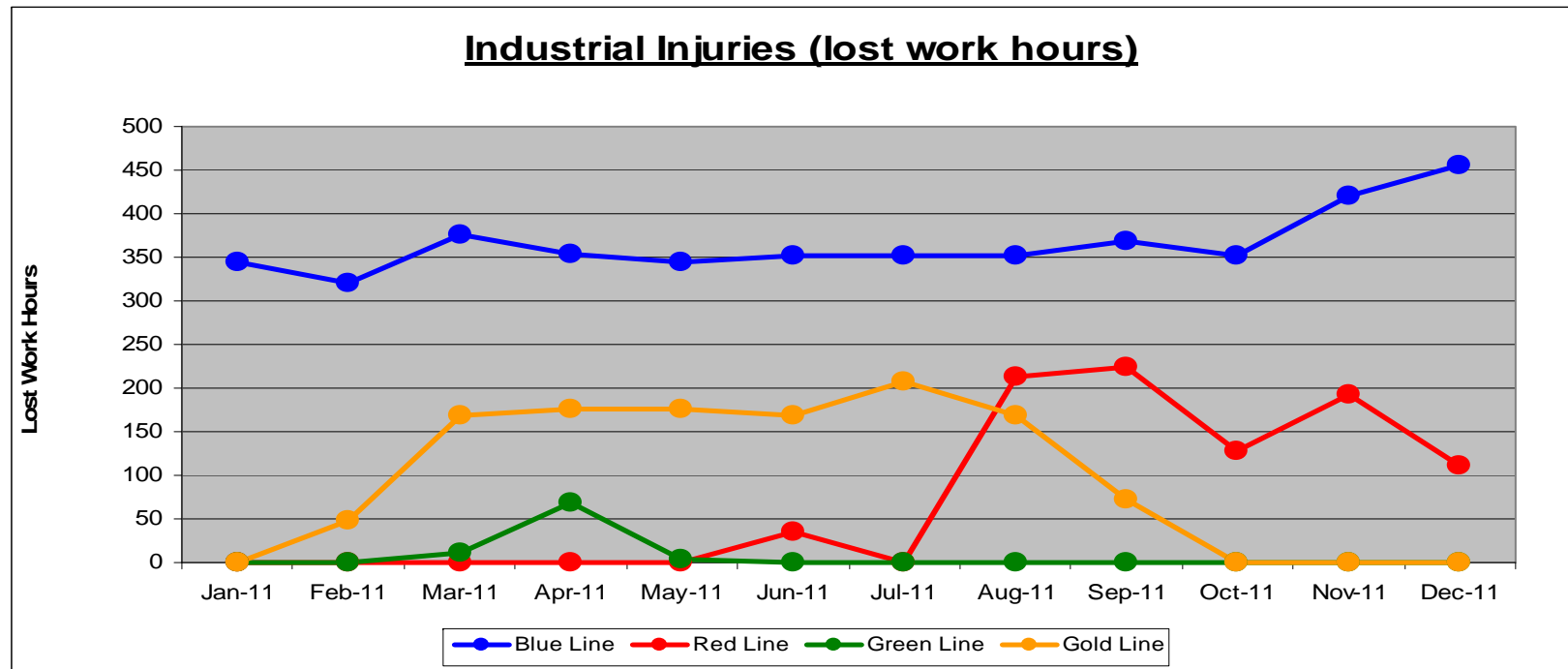


Metro

Table of Contents

•	Safety	
	- Industrial Injuries	Page 3
	- Rail Vehicle Accidents & Major Incidents	Page 4
•	Customer Service	
	- Service Delivery – AM/PM Pull-Outs	Page 5
	- Vehicle Utilization – Blue Line & Green Line	Page 6
	- Vehicle Utilization – Red Line & Gold Line	Page 7
	- Mean Miles Between Failures (Major)	Page 8
	- Repeat Failures	Page 9
•	Business Processes	
	- Major Incidents	Page 10
	- Preventive Maintenance Compliance	Page 11
•	Finance	
	- Vandalism & Graffiti Costs	Page 12
	- Graffiti Pictures	Page 13
	- Material & Labor Costs	Page 14
	- Cost per mile	Page 15
	- Absence vs. Overtime	Page 16
•	Engineering	
	- Rail Vehicle Engineering Project Summary	Page 17
	- P2550 Vehicle Acceptance Program	Page 18
•	Quality Assurance	
	- Warranty Program Projects Summary	Page 19
•	Growth	
	- RFS Instruction Department Activities	Page 20

Industrial Injuries – Lost Work Hours December 2011



	Employees		December 2011 Lost Work Hours			
	Assigned	Active	Service Attendant	Maint. Specialist	Body Repairer /Painter	Total Hrs.
Blue Line	112	107	176	104	176	456
Red Line	104	94	112	0	0	112
Green Line	49	46	0	0	0	0
Gold Line	52	50	0	0	0	0
Eng/QA/Admin	31	31				0
Totals	348	328	288	104	176	568

Rail Vehicle Accidents & Major Incidents

December 2011

Repair Costs	Jan-11	Feb-11	Mar-11	Apr-11	May-11	Jun-11	Jul-11	Aug-11	Sep-11	Oct-11	Nov-11	Dec-11	Totals
Blue Line	\$961	\$2,114	\$684	\$26,990	\$4,844	\$189	\$0	\$395	\$7,337	\$888	\$16,188	\$1,199	\$61,789
Red Line	\$0	\$0	\$0	\$0	\$0	\$0	\$0	\$0	\$0	\$0	\$0	\$0	\$0
Green Line	\$0	\$0	\$0	\$0	\$0	\$0	\$0	\$0	\$0	\$0	\$0	\$0	\$0
Gold Line	\$239	\$13	\$4,031	\$0	\$0	\$5,458	\$3,763	\$2,567	\$0	\$320	\$0	\$0	\$16,391
Totals	\$1,200	\$2,127	\$4,715	\$26,990	\$4,844	\$5,647	\$3,763	\$2,962	\$7,337	\$1,208	\$16,188	\$1,199	\$78,180

Rail Vehicle Accident Costs - December 2011				
Metro Blue Main Line				
Date	Incident #	Problem code	Incident Description	Cost
12/19/2011	2116529	Train vs. Vehicle	10-73 at Long Beach and 16th Street northbound on Track 1, Train 7, T-208, 121-148-140.	\$849.00
12/26/2011	2119177	Train vs. Pedestrian	10-72 at Alondra grade crossing northbound, T-159, Train 11, Track 1.	\$350.00
12/26/2011	2119208	Train vs. Pedestrian	10-72 at Blue Line Yard. Hazardous material in blowdown area for car 109A (M-522).	\$0.00
			GRAND TOTAL	\$1,199.00
(10-71) = Train vs. Object, (10-72) = Train vs. Pedestrian, (10-73) = Train vs. Vehicle (10-74) = Train vs. MTA Vehicle, (10-75) = Derailment				

Service Delivery December 2011

Blue Line – Fleet Size 69 cars

	<u>Vehicles Required</u>	<u>Average Available</u>	<u>% Up (Down)</u>
Pull Out			
Weekday:	60	61	101%
Weekend:	36	41	115%

Late Pullouts: 0 *

Monthly Mileage: 504,686 miles

Expo Line – Fleet Size 21 cars

Expo Revenue Operations Date (ROD) to be determined.

Red Line - Fleet Size 104 cars

	<u>Vehicles Required</u>	<u>Average Available</u>	<u>% Up (Down)</u>
Pull Out			
Weekday:	70	80	114%
Weekend:	48	61	126%

Late Pullouts: 0 *

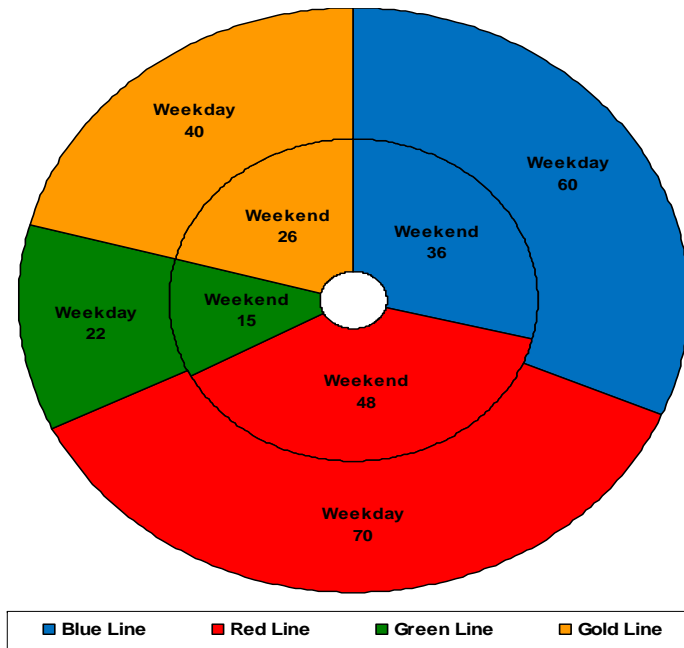
Monthly Mileage: 563,262 miles

Green Line – Fleet Size 29 cars

	<u>Vehicles Required</u>	<u>Average Available</u>	<u>% Up (Down)</u>
Pull Out			
Weekday:	22	24	108%
Weekend:	15	17	112%

Late Pullouts: 0 *

Monthly Mileage: 229,304 miles



Gold Line – Fleet Size 50 cars

P2550 – Fleet Size 48 cars

P2000 – Fleet Size 2 cars

	<u>Vehicles Required</u>	<u>Average Available</u>	<u>% Up (Down)</u>
Pull Out			
Weekday:	40	41	103%
Weekend:	26	38	147%

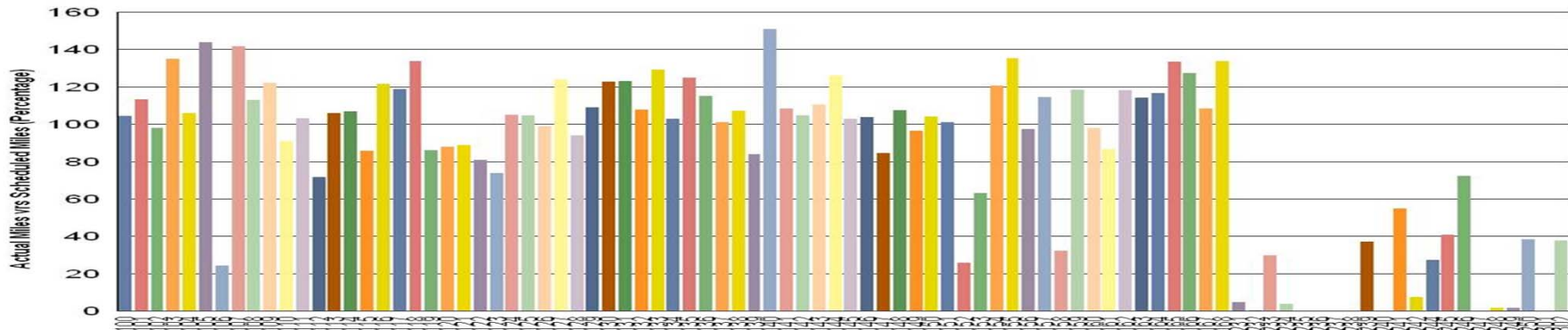
Late Pullouts: 0 *

Monthly Mileage: 274,854 miles

* Due to a vehicle related problem

Vehicle Utilization December 2011

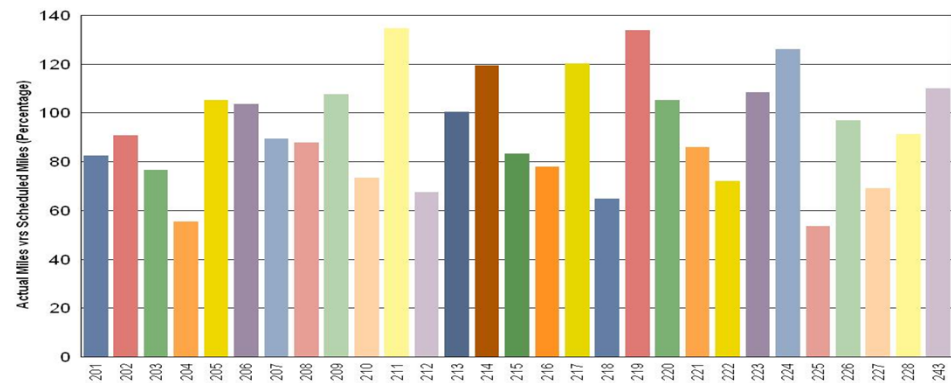
Metro Blue/Expo Line Fleet



Blue Line:

All vehicles listed below the 40% mark are vehicles run on the Expo line and are low on mile usage.

Metro Green Line



Green Line:

The fleet has met the daily maximum utilization requirements for the month of December.

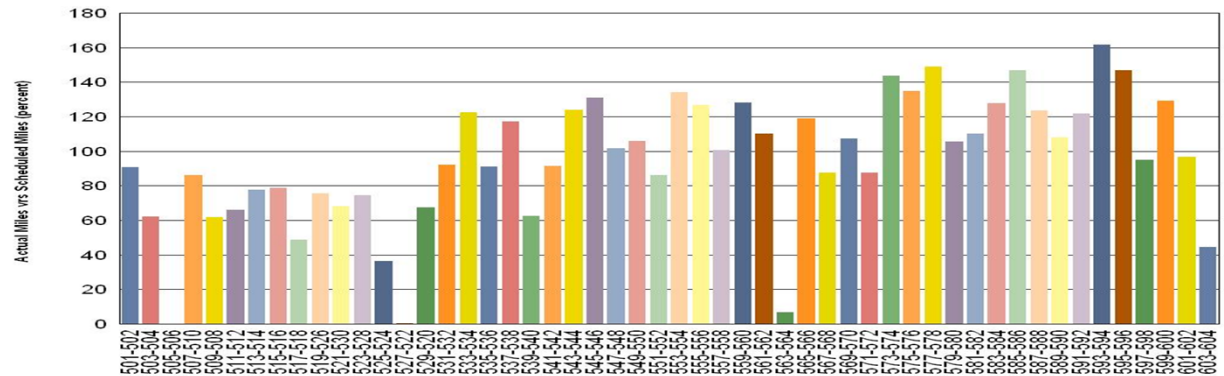
Vehicle Utilization December 2011

Metro Red Line

Red Line:

Explanation for under-used vehicles:

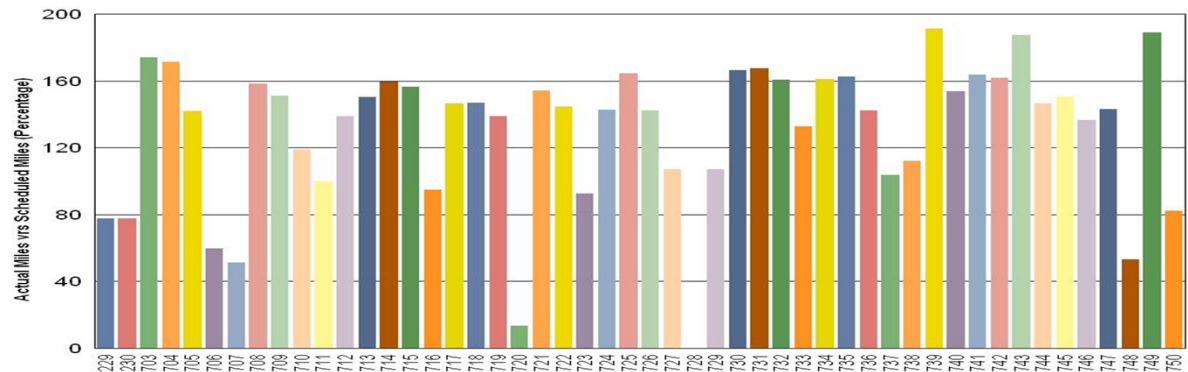
- 525-524 Vehicle is a repeater car with friction brake issues requiring simulated service testing after repairs are completed (repeater process).
- 527-522 Vehicle required 90k service and has had numerous open work orders.
- 563-564 Vehicle is a repeater car with friction brake issues requiring simulated service testing after repairs are completed (repeater process).



Metro Gold Line

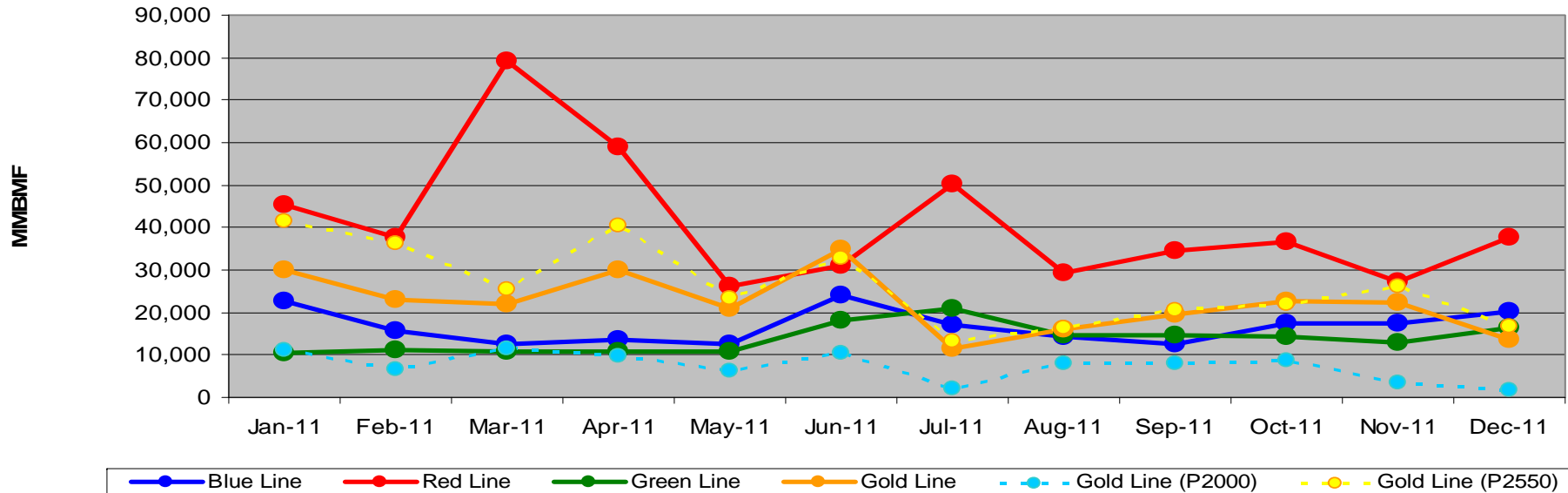
Gold Line:

- 720 Vehicle required extensive troubleshooting related to the ATP system. Vehicle returned to service on 12/26/11.
- 728 Vehicle continues to be out of service due to a yard derailment in July.



Mean Miles Between Failures (Major) Year to Date

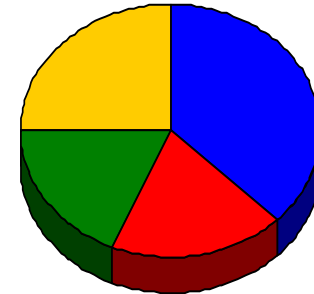
Mean Miles Between Major Failures (12 months)



	Jan-11	Feb-11	Mar-11	Apr-11	May-11	Jun-11	Jul-11	Aug-11	Sep-11	Oct-11	Nov-11	Dec-11
Blue Line	22,749	15,601	12,500	13,483	12,557	24,050	17,123	14,425	12,679	17,397	17,322	20,187
Red Line	45,357	37,732	79,178	59,089	26,084	30,932	50,099	29,298	34,535	36,745	27,358	37,551
Green Line	10,535	11,163	10,687	10,787	10,882	18,177	20,877	14,482	14,740	14,148	13,029	16,379
Gold Line	30,095	23,095	22,044	30,145	20,776	34,792	11,668	15,906	19,647	22,773	22,340	13,743
Gold Line (P2000)	11,208	6,689	11,413	9,625	6,377	10,351	2,153	8,019	7,872	8,887	3,509	1,639
Gold Line (P2550)	41,426	36,220	25,588	40,404	23,394	32,767	13,095	16,370	20,553	22,032	26,107	16,769

Repeat Failures December 2011

Metro Blue Line: 6 Repeat Failures
Metro Red Line: 3 Repeat Failures
Metro Green Line: 3 Repeat Failures
Metro Gold Line: 4 Repeat Failures



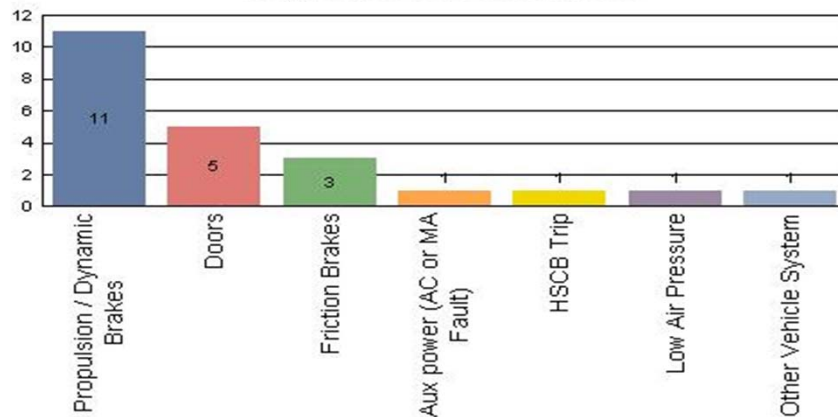
■ Blue Line
 ■ Red Line
 ■ Green Line
 ■ Gold Line

Repeater Car Details - December 2011								
System	Blue Line		Red Line		Green Line		Gold Line	
	Car #	Repeats	Car #	Repeats	Car #	Repeats	Car #	Repeats
ATP							716	1
Doors	101	1			204	1	704	1
PA/Intercom	116	1						
Propulsion/Dynamic Brake	119	1	537	1	210	2		
	123	3	602	1				
Radio			537	1			738	2
TOTALS	6		3		3		4	

Major Incidents December 2011

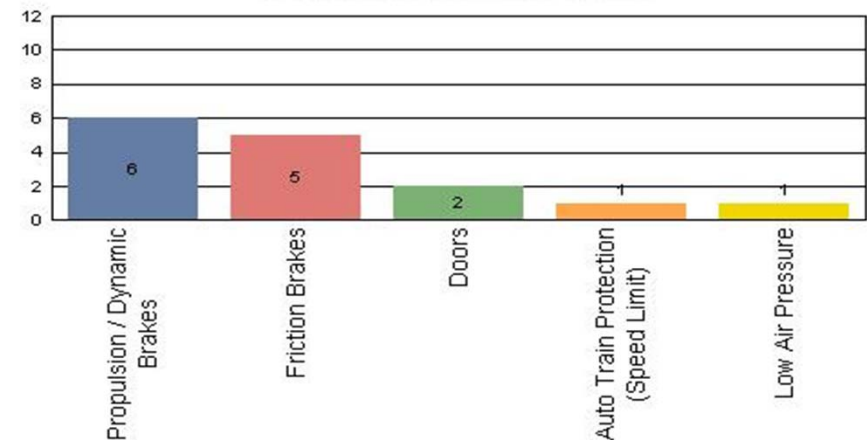
Metro Blue Line

Top Incident Categories



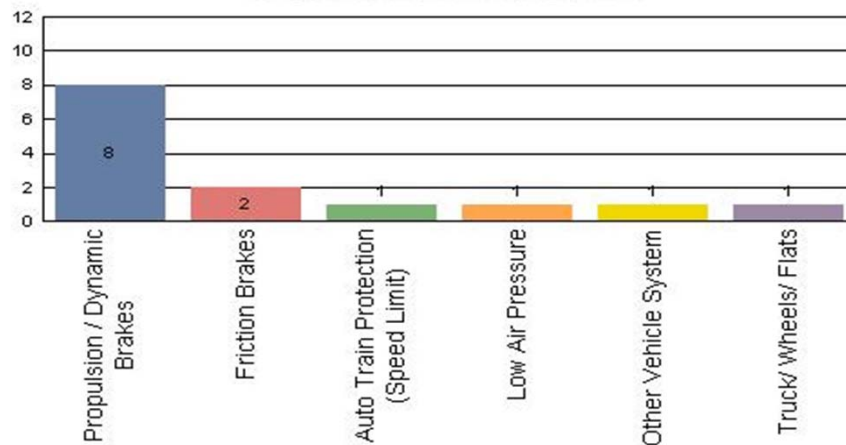
Metro Red Line

Top Incident Categories



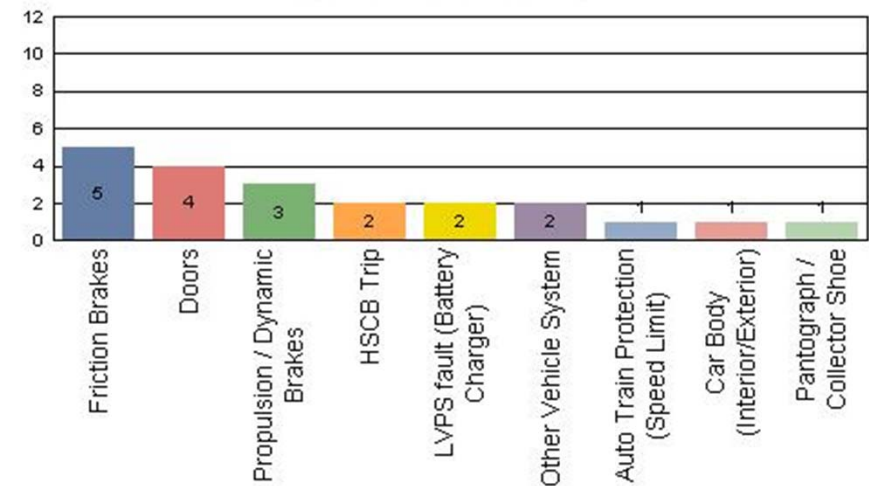
Metro Green Line

Top Incident Categories



Metro Gold Line

Top Incident Categories



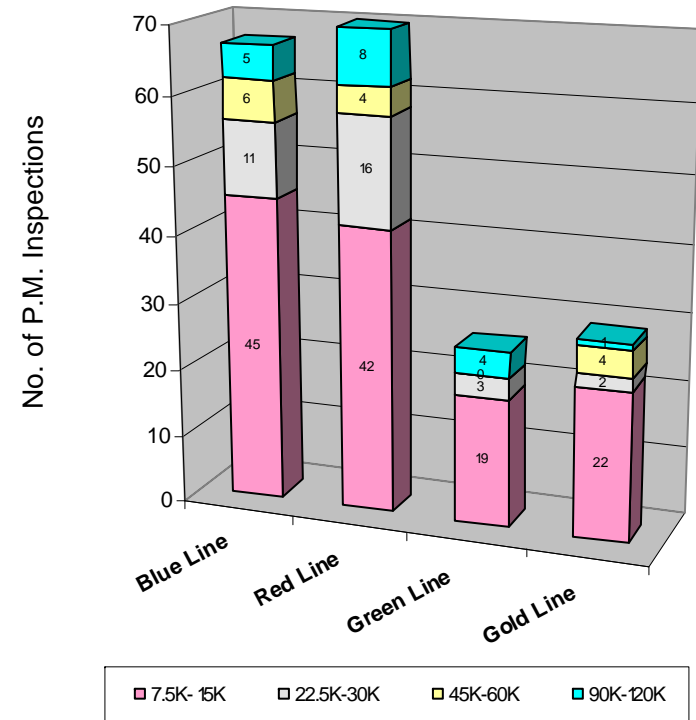
Preventive Maintenance Compliance

December 2011

PM Compliance	Jan-11	Feb-11	Mar-11	Apr-11	May-11	Jun-11	Jul-11	Aug-11	Sep-11	Oct-11	Nov-11	Dec-11
Blue Line	100%	100%	100%	100%	100%	100%	100%	100%	100%	100%	100%	100%
Red Line	100%	97%	100%	100%	90%	100%	100%	100%	100%	100%	100%	100%
Green Line	100%	100%	100%	100%	100%	100%	100%	100%	100%	100%	100%	96%
Gold Line	100%	100%	100%	100%	100%	100%	100%	100%	100%	100%	100%	100%

December 2011 Preventive Maintenance Inspections

No. of P.M. Inspections	7.5K-15K	22.5K-30K	45K-60K	90K-120K	Totals
Blue Line	45	11	6	5	67
Red Line	42	16	4	8	70
Green Line	19	3	0	4	26
Gold Line	22	2	4	1	29
Totals:	128	32	14	18	192

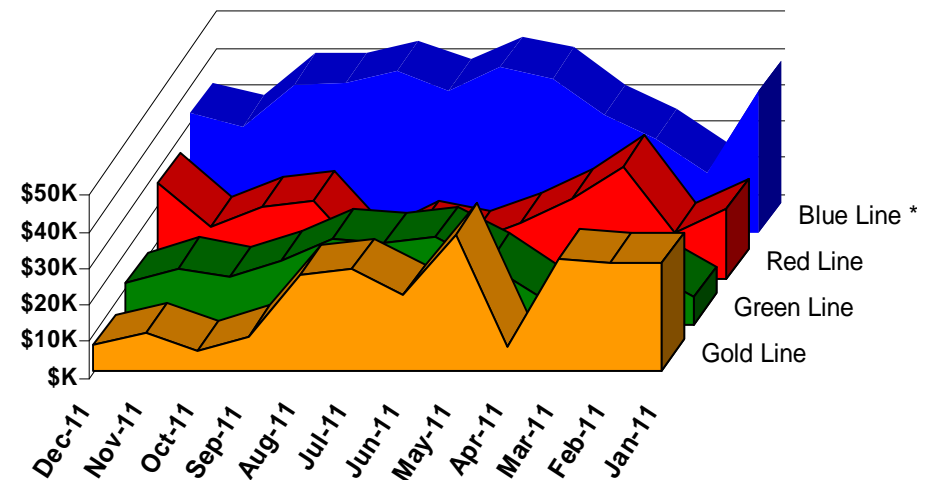


Vandalism & Graffiti Report

December 2011

	Jan-11	Feb-11	Mar-11	Apr-11	May-11	Jun-11	Jul-11	Aug-11	Sep-11	Oct-11	Nov-11	Dec-11	Year-to-Date
Blue Line *	\$39K	\$16K	\$26K	\$32K	\$42K	\$45K	\$39K	\$44K	\$41K	\$41K	\$29K	\$33K	\$427K
Red Line	\$19K	\$12K	\$31K	\$22K	\$15K	\$10K	\$13K	\$6K	\$21K	\$20K	\$14K	\$26K	\$209K
Green Line	\$7K	\$15K	\$7K	\$8K	\$16K	\$24K	\$22K	\$23K	\$17K	\$13K	\$15K	\$11K	\$180K
Gold Line	\$29K	\$29K	\$31K	\$7K	\$37K	\$21K	\$28K	\$26K	\$9K	\$5K	\$10K	\$7K	\$239K
Totals:	\$94K	\$73K	\$94K	\$68K	\$111K	\$100K	\$102K	\$99K	\$89K	\$78K	\$69K	\$77K	\$1,055K

December 2011 Vandalism & Graffiti - All Rail				
	Qty	Labor	Materials	Totals
Windows replaced	23	\$2,772	\$2,612	\$5,384
Vandal Shields	936	\$24,560	\$8,928	\$33,488
Seats Cleaned	918	\$2,478	\$0	\$2,478
Seats Replaced	308	\$9,667	\$7,531	\$17,198
Graffiti removal - other	647	\$8,792	\$450	\$9,242
Repainting panels	6	\$7,808	\$1,452	\$9,260
Totals	2,838	\$56,077	\$20,973	\$77,050



* Blue Line totals include vandalism & graffiti removal from the P2000 cars that will soon be used on the Expo Line.

Graffiti Pictures December 2011

Blue Line



Green Line



Gold Line

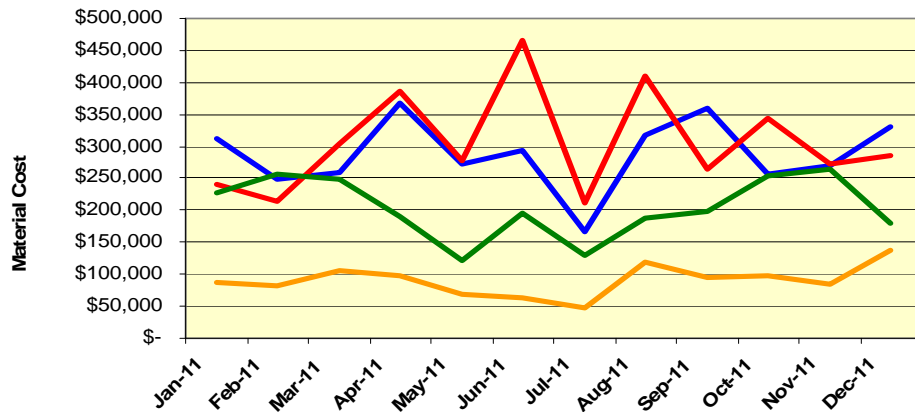


Material and Labor Costs

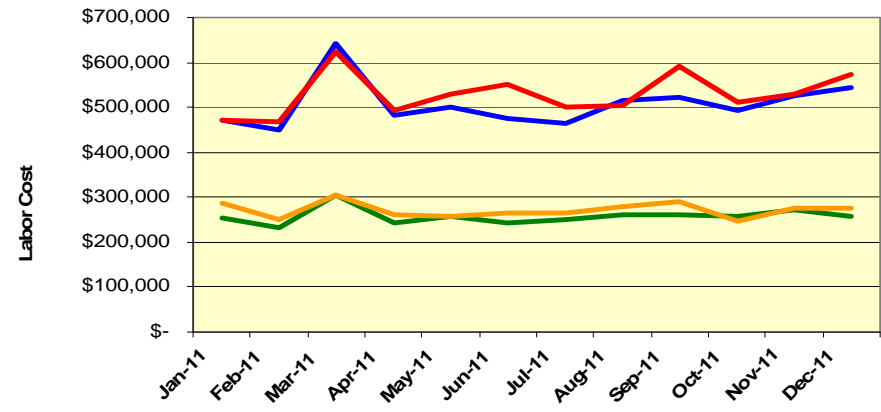
December 2011

<u>MATERIALS</u>	Jan-11	Feb-11	Mar-11	Apr-11	May-11	Jun-11	Jul-11	Aug-11	Sep-11	Oct-11	Nov-11	Dec-11
Blue Line	\$ 311,345	\$ 249,678	\$ 259,887	\$ 368,467	\$ 272,272	\$ 294,179	\$ 167,328	\$ 318,296	\$ 359,508	\$ 256,152	\$ 268,760	\$ 331,976
Red Line	\$ 240,990	\$ 213,323	\$ 305,345	\$ 386,455	\$ 277,113	\$ 466,346	\$ 212,074	\$ 410,299	\$ 263,808	\$ 344,563	\$ 272,291	\$ 285,916
Green Line	\$ 228,636	\$ 255,578	\$ 247,907	\$ 189,460	\$ 121,859	\$ 194,750	\$ 129,976	\$ 187,997	\$ 198,811	\$ 254,691	\$ 265,489	\$ 180,929
Gold Line	\$ 86,984	\$ 82,141	\$ 105,452	\$ 96,824	\$ 67,967	\$ 64,397	\$ 47,760	\$ 118,401	\$ 94,967	\$ 98,380	\$ 83,425	\$ 138,599
Totals	\$ 867,955	\$ 800,720	\$ 918,591	\$ 1,041,206	\$ 739,212	\$ 1,019,672	\$ 557,138	\$ 1,034,993	\$ 917,095	\$ 953,786	\$ 889,965	\$ 937,420

Material Costs



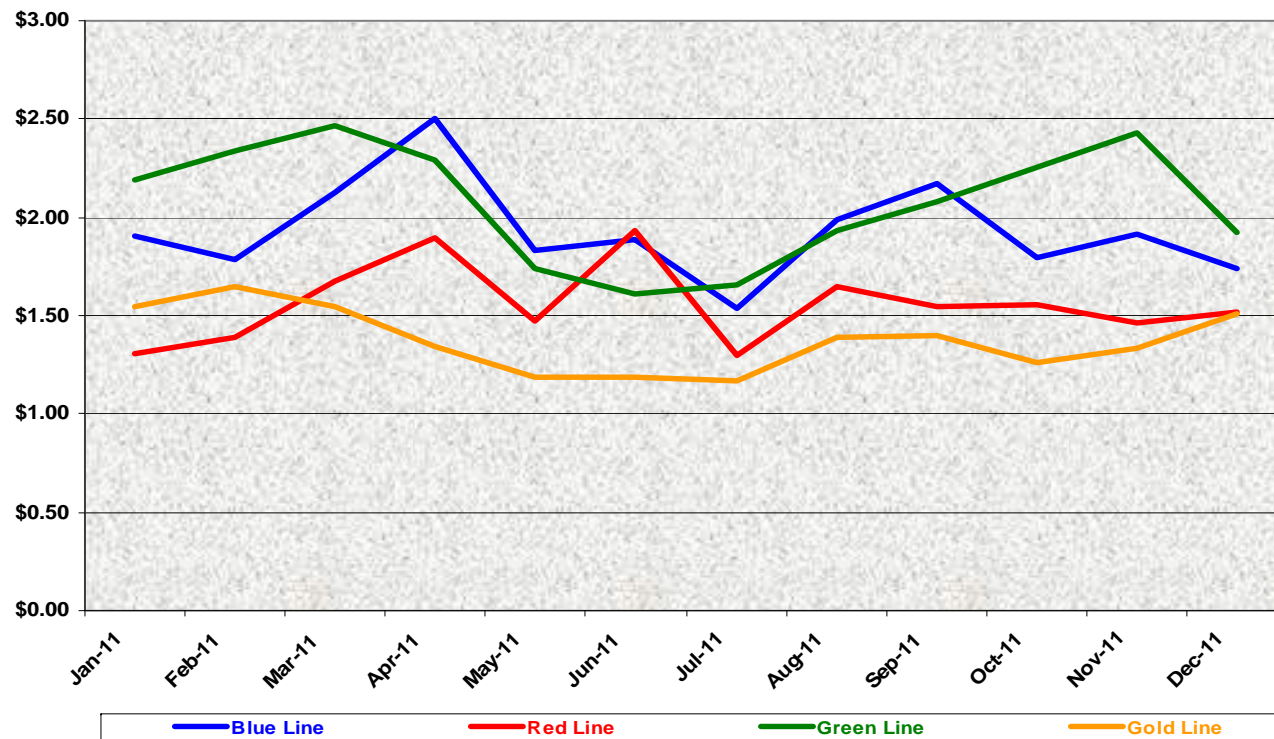
Labor Costs



<u>LABOR</u>	Jan-11	Feb-11	Mar-11	Apr-11	May-11	Jun-11	Jul-11	Aug-11	Sep-11	Oct-11	Nov-11	Dec-11
Blue Line	\$ 470,555	\$ 447,928	\$ 642,540	\$ 480,658	\$ 500,263	\$ 475,354	\$ 464,468	\$ 513,406	\$ 520,526	\$ 493,739	\$ 526,600	\$ 544,564
Red Line	\$ 472,105	\$ 467,849	\$ 622,201	\$ 493,104	\$ 531,171	\$ 550,464	\$ 500,504	\$ 504,785	\$ 589,986	\$ 510,944	\$ 530,408	\$ 571,885
Green Line	\$ 255,429	\$ 230,329	\$ 305,821	\$ 244,809	\$ 257,678	\$ 243,969	\$ 250,617	\$ 259,629	\$ 261,796	\$ 256,610	\$ 272,603	\$ 259,198
Gold Line	\$ 285,821	\$ 248,537	\$ 303,998	\$ 259,784	\$ 257,114	\$ 264,854	\$ 265,256	\$ 280,715	\$ 289,048	\$ 246,890	\$ 274,017	\$ 276,926
Totals	\$ 1,483,910	\$ 1,394,643	\$ 1,874,560	\$ 1,478,355	\$ 1,546,225	\$ 1,534,641	\$ 1,480,845	\$ 1,558,535	\$ 1,661,357	\$ 1,508,183	\$ 1,603,628	\$ 1,652,573

Cost Per Mile December 2011

Cost per mile:	Jan-11	Feb-11	Mar-11	Apr-11	May-11	Jun-11	Jul-11	Aug-11	Sep-11	Oct-11	Nov-11	Dec-11
Blue Line	\$1.91	\$1.79	\$2.12	\$2.50	\$1.83	\$1.88	\$1.54	\$1.99	\$2.17	\$1.80	\$1.91	\$1.74
Red Line	\$1.31	\$1.39	\$1.67	\$1.90	\$1.48	\$1.93	\$1.29	\$1.64	\$1.55	\$1.55	\$1.47	\$1.52
Green Line	\$2.19	\$2.34	\$2.47	\$2.30	\$1.74	\$1.61	\$1.66	\$1.93	\$2.08	\$2.26	\$2.43	\$1.92
Gold Line	\$1.55	\$1.65	\$1.55	\$1.35	\$1.18	\$1.18	\$1.17	\$1.39	\$1.40	\$1.26	\$1.33	\$1.51



No facility costs are included

Absences vs. Overtime

December 2011

ABSENCE TYPE and HOURS	3940	3941	3942	3943	3944	Total
AWP-ABSENT W/O PERMISSION	0.00	1.77	0.00	0.00	0.00	1.77
BER-BEREAVEMENT	0.00	0.00	72.00	32.00	24.00	128.00
CTO-COMPENSATORY TIME OFF	0.00	214.33	208.00	156.00	146.50	724.83
CVA - CASUAL VACATION	0.00	0.00	476.00	228.00	192.00	896.00
EFH-EMG. FLOAT HOL.	0.00	0.00	72.00	64.00	16.00	152.00
ETO-EXCUSED TIME OFF	0.00	40.00	19.45	11.43	24.90	95.78
FML-FAMILY CARE LEAVE	0.00	56.00	540.00	256.00	272.00	1,124.00
HLF-HOLIDAY FLOATING	32.00	280.00	192.00	72.00	176.00	752.00
HNP-HOLIDAY NOT PAID	0.00	0.00	0.00	8.00	16.00	24.00
HOL-HOLIDAY LEGAL	104.00	528.00	464.00	112.00	136.00	1,344.00
II-INDUSTRIAL INJURY	0.00	16.00	112.00	0.00	0.00	128.00
JUR-JURY DUTY	0.00	0.00	0.00	0.00	8.00	8.00
LC1-LABOR CODE 233	24.00	137.00	223.80	48.00	96.00	528.80
LTI-OCCPIL/LONGTRM INJ LEAVE	0.00	440.00	0.00	0.00	0.00	440.00
MLN-MILITARY ABSENCE-UNPAID	0.00	0.00	176.00	0.00	0.00	176.00
OWP-OFF WITH PERMISSION	0.00	0.00	0.00	4.00	0.00	4.00
RTO-REQUESTED TIME OFF	0.00	16.00	0.00	0.00	0.00	16.00
SCK-SICK PAY	32.00	192.00	214.85	129.00	104.00	671.85
SCW-SICK WITHOUT PAY	0.00	72.00	1.15	32.00	16.00	121.15
VAC-VACATION	80.00	884.00	607.50	108.00	252.00	1,931.50
Total Absence Hours	272	2,877	3,379	1,260	1,479	9,268
Number of Work Force (assigned)	31	112	104	49	52	348
Full Work Force hours/month	5,372	19,410	18,023	8,492	9,012	60,308
Absence as a % of Work Force	5%	15%	19%	15%	16%	15%
OVERTIME TYPE and HOURS	3940	3941	3942	3943	3944	Total
CTB-COMPENSATORY TIME TO BANK	8	151	74	42	85	360
OTP-PREM OVERTIME	643	2066	2745	1070	1180	7704
WLO-Worked Lunch Overtime	5	31	86	68	62	251
Total	656	2247	2905	1180	1327	8314
Overtime as a % of Work Force	12%	12%	16%	14%	15%	14%
UNCOVERED ABSENCES	3940	3941	3942	3943	3944	Total
Absences FTE	2	17	19	7	9	53
OTP FTE	4	13	17	7	8	48
FTE Difference	-2	4	2	0	1	5

Rail Vehicle Engineering Project Summary

December 2011

Preparation of Engineering Technical Specifications	Tracking #	Status
Red Line AC Gear Box (Rev. 0)	A650/TS/026	Draft in Progress
P2000 Doors (Rev. 0)	P2000/TS/029	Draft in Progress
Articulation Diaphragm	P865-P2020/TS/060	Final Metro Review
Powered Axle Overhaul SOW	P2000 SOW	Released - Out for bid
Vital Relay Calibration	P865/P2020/TS/061	In Revising Process
DC Air Compressor Motor Overhaul	P865/P2020-TS-057	Released
Friction Brake Kit Less Air Compressor Overhaul	P2000/TS/035	In Revising Process
Center Truck Friction Brake Disc	P2000-TS-020 rev. 01	Released
A650 Battery Specification	A650/TS/39	Draft in Progress
Powered Axle Overhaul SOW	P865-P2020/TS/xx	Draft in Progress
General - All Lines		Status
Roadway Worker Protection		CPUC/Installing ProTran1 Device on All Fleets
Fleet Support, troubleshooting, and fix cars		CH2M Hill
P2000 Overhaul Program		Status
Master Controller - Bombardier Refurbish		Ongoing Program
Slewing Ring		Developing Overhaul Procedures
Traction Motor Overhaul Bid		Solicitation completed - Bid goes to Swiger Coil - Board Approved
New LED Destination Signs		Luminator Prototype In-Service on Train Under 6 month Evaluation
Disable Automatic Sanding		Fleet Modification completed.
P865/P2020 Program		Status
5k vs 7.5K Preventative Maintenance Evaluation		Investigation in-process
Cobra Brake Pad Testing		Completed AW0 test.
Static Inverter - Transtechnik		Inverter installed and running in revenue service.
EMI On CB1 Tripping		Investigation in-process
Traction Motor Overhaul		Solicitation completed - Bid goes to Dahl-Beck Electric - Board Approved
Remotely reset CB1 Breaker		Prototype was successfully tested. In process of procuring parts for fleet modification.
ABB Static Inverter		Calculation/system integration in process. Unit schedule for February 2012 delivery
P3010		Status
78 New Light Rail Vehicle		Solicitation is in progress.
P2000 Gold to Green		Status
Signal Package Conversion (Gold to Green)		On-Hold
A650 Overhaul Program		Status
Midlife Overhaul Specification		Specification Complete. On hold - Re-assessing.
Car 591/592		Propulsion Investigation complete
HPT Upgrade		Wabtec Proposal in review by Metro-Wabtec are modifying 10 units for production testing.
AB New Traction Motor Mount		Prototype was accepted. Working with AB for Fleet Modification.
Roll-Back Speed Sensor System		EB Reset Investigation
Friction Brake Kit Overhaul		Solicitation completed - Bid goes to Wabtec - Board Approved
Hand Rail - Bike Area		Prototype approved - Procurement buying parts for fleet modification
Ribbed Rubber Flooring PRF		Proposal in process
P2550		Status
Vehicle Acceptance		Forty eight cars have been Final Accepted.
Bike Space		Modified Car 710 as Prototype, ADA approval is complete, awaiting for final plan and signage by Metro-Marketing and bike committee.
Expo		Status
Readiness		Metro-RFS Engineering is supporting qualification and test activities of vehicles and wayside.
ATP Certification		Testing completed; certification letter drafted and under Metro review
Junction of Blue line and Expo line Testing		Signal Test support in progress

P2550 Vehicle Acceptance Program

December 2011

Vehicle Status Update:

- Metro has received 48 cars with all 48 being final accepted.
- Two prototype cars remain at contractor's assembly site in Pittsburg and are being updated to the latest configuration.

Engineering Activities Update:

- Event recorder: Configuration continues to be finalized; however, on-site support from contractor and supplier is required to resolve final technical issues. Faiveley-France is targeted to be on site in January 2012 to expedite qualification and provide training.
- Decelerometer Failures: Supplier is currently qualifying replacement decelerometers to replace those on the fleet.

Production Car Status – Pittsburg:

- Cars 701& 702 - Reconfiguration of cars is in process with rewiring and repining of cables at 100% complete. These cars are now targeted to ship to Los Angeles by April 2012.

Project Management:

- Contract spares continue to be delivered to Metro and estimated to be 85% complete. All parts needed for day-to-day maintenance have been received. Critical parts needed for heavy repairs are scheduled to begin arriving in Q1 2012.
- Daily and bi-weekly meetings are scheduled with contractor management to address project issues.

QA-Warranty Program Projects Summary

December 2011

QA-WARRANTY ACTIVITIES:

- Conducted 38 QA audits: MRL (8), MBL (8), MGL (8), MGD (10), Vendors (4). Exceeded yearly goal mandated by OIG / CPUC (16) by 200%.
- P2550 Car Modification Campaign / testing oversight, Metro/ABI warranty meetings, tracking reliability trends, parts reimbursement & warranty man-hours review: On-going.
- A650 Base Buy & Option car fleet warranty – Truck Frame Modification Campaign (30 trucks of 232 modified to date). A MRL Cost Avoidance savings to date is \$121,740.00.
- Conducted QA First Article Inspections (21).
- Technical support, Expo Line ATP/TWC Project, Overhauls / Mod Programs, (A650/P2000/P2020/865) Friction Brakes, HPT's, Brake Resistor Grids, T/M's, MA's, ATP Vital Relays, CB1 Trips, HVAC, Doors, Video downloads.
- OIG Maintenance Investigation (May 20, 2010 to July 20, 2011): Internally closed out by RFS Mgt Nov 5, 2011.
- QA Program Audit - American Public Transit Exams Institute (Sept 16, 2011 – Dec 2011) closed out.
- Rev #2, QA & Warranty Manuals updates approved by Mgt Dec 8, 2011.
- For all Divisions Warranty Cost Avoidance for 2011 (\$521,178.40).
- HR Manpower & TCU Chairman, discussions ongoing Equipment Record Specialist (ERS) roster separation (Bus from Rail): No status.
- Archived all reports and records onto QA-Warranty's Share Drive.

RFS Instruction Department Activities

December 2011

Training classes completed during the month of December 2011

Description	Course Hours	Student Count	Training Hours
<u>Blue & Expo Line Training - (P865/2020 & P2000 LRV):</u>			
RFS SIEMENS 2000 COUPLER	8	5	40
RFS SIEMENS 2000 HVAC	64	5	320
RFS SIEMENS 2000 DOOR CONTROLS	40	5	200
Total Blue Line Training (Hours):			560
<u>Green Line Training (P2000 LRVs):</u>			
RFS SIEMENS 2000 COUPLER	8	1	8
RFS SIEMENS 2000 HVAC	64	1	64
RFS SIEMENS 2000 DOOR CONTROLS	40	1	40
Total Green Line Training (Hours):			112
<u>Gold Line Training (P2550 LRVs):</u>			
RFS ANSALDOBREDA 2550 TRUCKS	24	3	72
RFS ANSALDOBREDA 2550 CAR BODY	16	3	48
RFS ANSALDOBREDA 2550 DOORS	32	4	128
RFS ANSALDOBREDA 2550 COUPLER	12	3	36
RFS ANSALDOBREDA 2550 FRICTION BRAKES	40	3	120
Total Gold Line Training (Hours):			404
<u>Total RFS Instruction for the month of December 2011 (Hours):</u>			<u>1,076.0</u>
<u>Other Instruction Activities</u>			
Vacations, Holidays, Sick Time			160
Red Line Technical Support			80

Total Other Instruction Activities **240.0**

Core Vehicle Training Completed: **BLUE** **RED** **GREEN** **GOI**

Percentage of core vehicle training complete: **87.4%** **99.5%** **92.1%** **90.3**

Siemens P2000 training complete: 36.8% N/A N/A N/A

Average Specialist Rail Experience Level in Years: **11.7** **10.4** **8.9** **9.9**

Core Training Completed

