



Rail Fleet Services Monthly Report July 2011

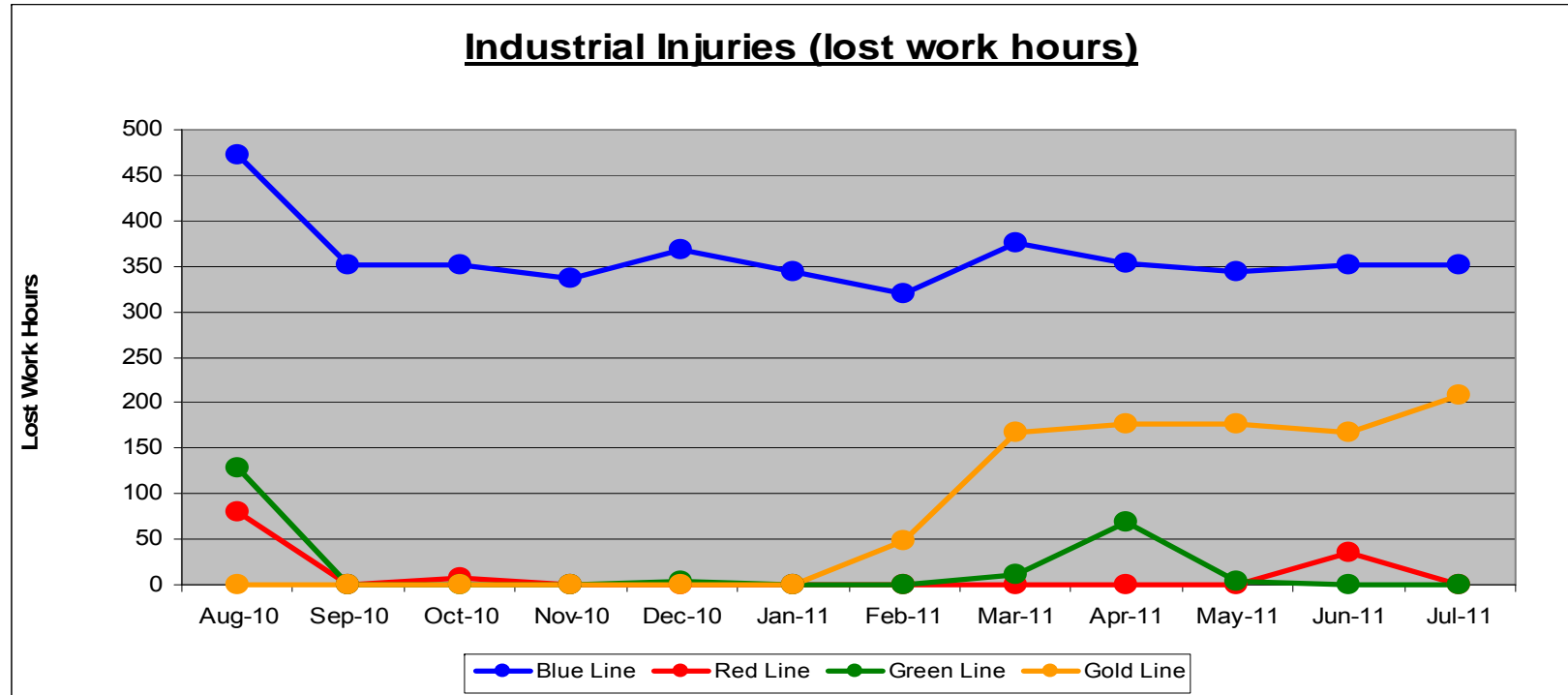


Metro

Table of Contents

| | | |
|---|--|---------|
| • | Safety | |
| – | Industrial Injuries | Page 3 |
| – | Rail Vehicle Accidents & Major Incidents | Page 4 |
| • | Customer Service | |
| – | Service Delivery – AM/PM Pull-Outs | Page 5 |
| – | Vehicle Utilization – Blue Line & Green Line | Page 6 |
| – | Vehicle Utilization – Red Line & Gold Line | Page 7 |
| – | Mean Miles Between Failures (Major) | Page 8 |
| – | Repeat Failures (Major) | Page 9 |
| • | Business Processes | |
| – | Major Incidents | Page 10 |
| – | Preventative Maintenance Compliance | Page 11 |
| • | Finance | |
| – | Vandalism & Graffiti Costs | Page 12 |
| – | Graffiti Pictures | Page 13 |
| – | Material & Labor Costs | Page 14 |
| – | Cost per mile | Page 15 |
| – | Absence vs. Overtime | Page 16 |
| • | Engineering | |
| – | Rail Vehicle Engineering Project Summary | Page 17 |
| – | P2550 Vehicle Acceptance Program | Page 18 |
| • | Quality Assurance | |
| – | Warranty Program Projects Summary | Page 19 |
| • | Growth | |
| – | Rail Fleet Services Training | Page 20 |

Industrial Injuries – Lost Work Hours July 2011



| | Employees | | July 2011 Lost Work Hours | | | |
|--------------|-----------|--------|---------------------------|-------------------|------------------------|------------|
| | Assigned | Active | Service Attendant | Maint. Specialist | Body Repairer /Painter | Total Hrs. |
| Blue Line | 109 | 101 | 0 | 184 | 168 | 352 |
| Red Line | 102 | 98 | 0 | 0 | 0 | 0 |
| Green Line | 49 | 45 | 0 | 0 | 0 | 0 |
| Gold Line | 50 | 47 | 192 | 8 | 8 | 208 |
| Eng/QA/Admin | 24 | 24 | 0 | 0 | 0 | 0 |
| Totals | 334 | 315 | 192 | 192 | 176 | 560 |

Rail Vehicle Accidents & Major Incidents

July 2011

| Repair Costs | Aug-10 | Sep-10 | Oct-10 | Nov-10 | Dec-10 | Jan-11 | Feb-11 | Mar-11 | Apr-11 | May-11 | Jun-11 | Jul-11 | Totals |
|--------------|----------|---------|---------|----------|----------|---------|---------|---------|----------|---------|---------|---------|-----------|
| Blue Line | \$50,124 | \$916 | \$4,781 | \$10,716 | \$16,938 | \$961 | \$2,114 | \$684 | \$26,990 | \$4,844 | \$189 | \$0 | \$119,257 |
| Red Line | \$0 | \$0 | \$0 | \$0 | \$562 | \$0 | \$0 | \$0 | \$0 | \$0 | \$0 | \$0 | \$562 |
| Green Line | \$0 | \$0 | \$0 | \$0 | \$0 | \$0 | \$0 | \$0 | \$0 | \$0 | \$0 | \$0 | \$0 |
| Gold Line | \$0 | \$441 | \$4,286 | \$3,016 | \$1,374 | \$239 | \$13 | \$4,031 | \$0 | \$0 | \$5,458 | \$3,763 | \$22,621 |
| Totals | \$50,124 | \$1,357 | \$9,067 | \$13,732 | \$18,874 | \$1,200 | \$2,127 | \$4,715 | \$26,990 | \$4,844 | \$5,647 | \$3,763 | \$142,440 |

| Rail Vehicle Accident Costs - July 2011 | | | | |
|---|------------|----------------------|--|-------------------|
| Metro Blue Main Line | | | | |
| Date | Incident # | Problem code | Incident Description | Cost |
| 7/22/2011 | 2037398 | Train vs. Object | 10-71, Train 8 (T-125) stuck canine southbound on Track 2, 92nd Street (Cars 149A, 138-114). | \$0.00 |
| | | | TOTAL FOR METRO BLUE LINE | \$0.00 |
| Metro Gold Line | | | | |
| Date | Incident # | Problem code | Incident Description | Cost |
| 7/20/2011 | 2036792 | Train vs. Vehicle | 10-73 at 3rd and Rowan Avenue, Train 11 (T-094), LRV 716A/734. | \$3,574.00 |
| | | | TOTAL FOR METRO GOLD LINE | \$3,574.00 |
| | | | | |
| Date | Incident # | Problem code | Incident Description | Cost |
| 7/21/2011 | 2036981 | Train vs. Pedestrian | 10-72, Car 712-A, Allen interlocking, 11.0. | \$189.00 |
| | | | TOTAL FOR METRO GOLD LINE | \$189.00 |
| | | | GRAND TOTAL | 3,763.00 |
| (10-71) = Train vs. Object, (10-72) = Train vs. Pedestrian, (10-73) = Train vs. Vehicle (10-74) = Train vs. MTA Vehicle, (10-75) = Derailment | | | | |

Service Delivery July 2011

Blue Line – Fleet Size 69 cars

| | <u>Vehicles</u> | <u>Average</u> | <u>% Up</u> |
|-----------------|-----------------|------------------|---------------|
| <u>Pull Out</u> | <u>Required</u> | <u>Available</u> | <u>(Down)</u> |
| Weekday: | 60 | 61 | 102% |
| Weekend: | 36 | 42 | 117% |

Late Pullouts: 0 *

Monthly Mileage: 410,945 miles

Expo Line – Fleet Size 21 cars

Red Line - Fleet Size 104 cars

| | <u>Vehicles</u> | <u>Average</u> | <u>% Up</u> |
|-----------------|-----------------|------------------|---------------|
| <u>Pull Out</u> | <u>Required</u> | <u>Available</u> | <u>(Down)</u> |
| Weekday: | 70 | 81 | 116% |
| Weekend: | 48 | 70 | 146% |

Late Pullouts: 0 *

Monthly Mileage: 551,086 miles

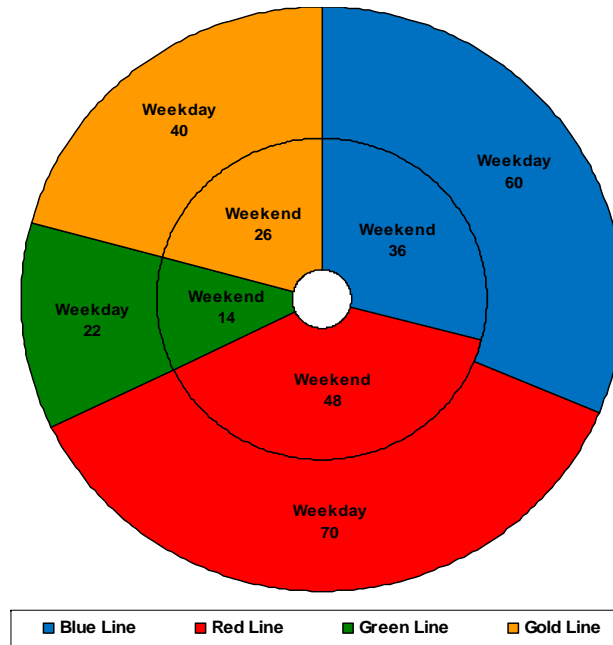
Green Line – Fleet Size 29 cars

| | <u>Vehicles</u> | <u>Average</u> | <u>% Up</u> |
|-----------------|-----------------|------------------|---------------|
| <u>Pull Out</u> | <u>Required</u> | <u>Available</u> | <u>(Down)</u> |
| Weekday: | 22 | 25 | 114% |
| Weekend: | 14 | 24 | 171% |

Late Pullouts: 0 *

Monthly Mileage: 229,646 miles

•Due to a vehicle related problem



Gold Line – Fleet Size 49 cars

P2550 – Fleet Size 45 cars

P2000 – Fleet Size 2 cars

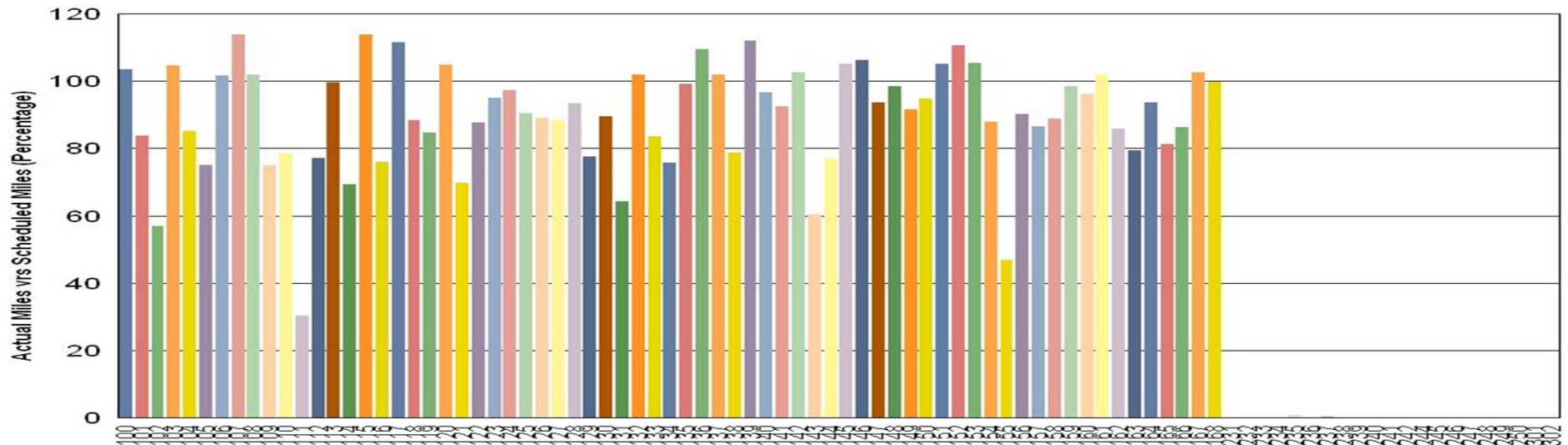
| | <u>Vehicles</u> | <u>Average</u> | <u>% Up</u> |
|-----------------|-----------------|------------------|---------------|
| <u>Pull Out</u> | <u>Required</u> | <u>Available</u> | <u>(Down)</u> |
| Weekday: | 40 | 41 | 103% |
| Weekend: | 26 | 38 | 146% |

Late Pullouts: 0 *

Monthly Mileage: 268,358 miles

Vehicle Utilization July 2011

Metro Blue/Expo Line Fleet

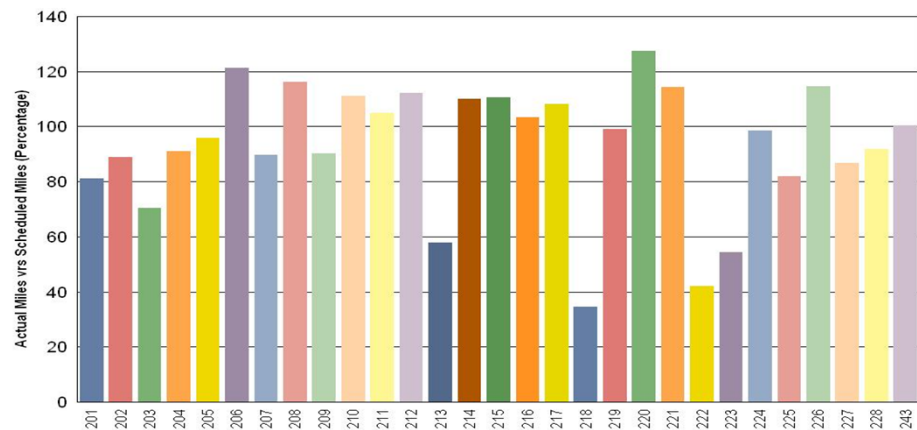


Blue Line – Vehicle 111 was out of service due to articulation overhaul.

Expo Line - The entire Expo Fleet (all 15 cars, 231-302) are not in revenue service at this time. Mileage will be minimal each month until the Expo Line opens.

Green Line – Vehicle 218 was out of service for propulsion and ATP problems.

Metro Green Line



Note: Percentage includes an average 4% mileage deduction for Yard mileage and Vehicle Testing.

Vehicle Utilization July 2011

Red Line – The following vehicles were out of service due to the following reasons:

505-506 - Long term; missing major system components.

507-510 - Friction brake overhaul

519-526 - Open work orders pending parts delivery (blower motor).

521-530 - Propulsion faults

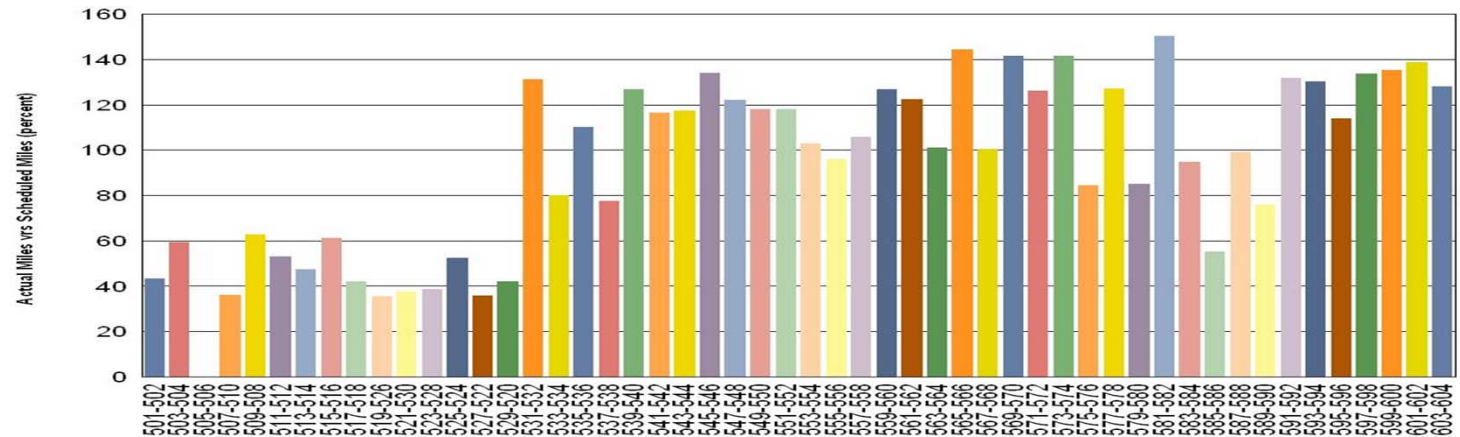
523-528 - Propulsion faults

527-522 - Propulsion faults

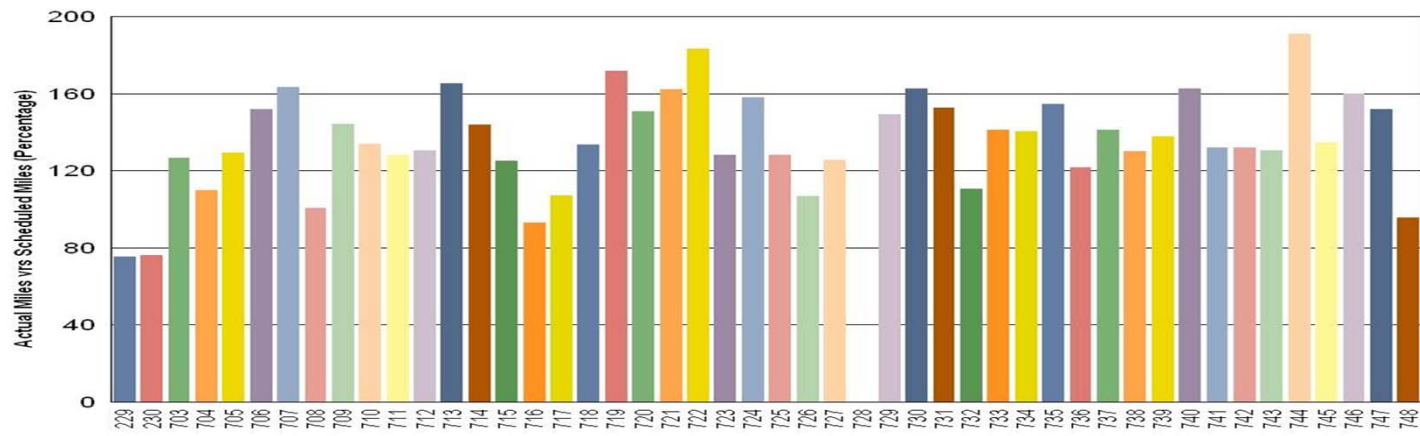
• **Percentage includes an average 4% mileage deduction for Yard mileage and Vehicle Testing.**

Gold Line – Vehicle 728 was involved in a yard derailment in June and remains out of service.

Metro Red Line

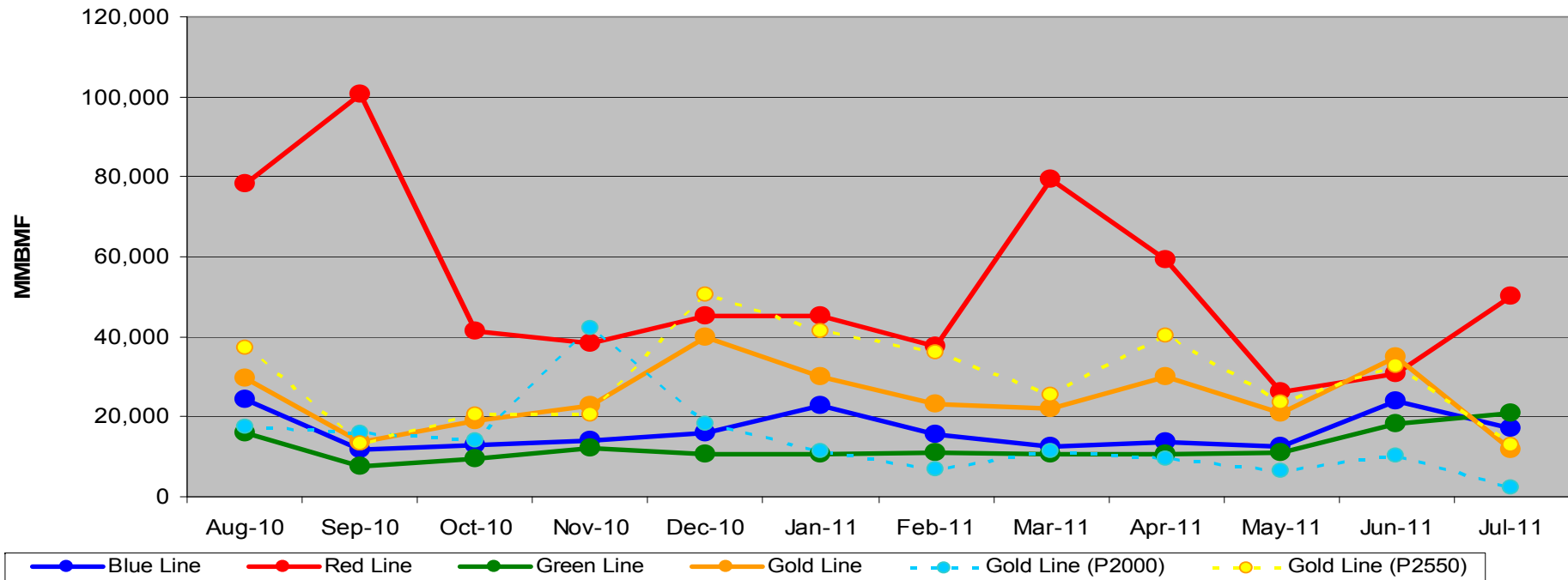


Metro Gold Line



Mean Miles Between Failures (Major) July 2011

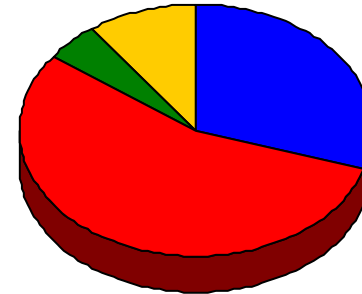
Mean Miles Between Major Failures (11-months)



Major Failure: When a train does not complete its scheduled run or is more than 5 minutes late of its scheduled arrival time.

Repeat Failures (Major) July 2011

Metro Blue Line: 6 Repeat Failures
Metro Red Line: 11 Repeat Failures
Metro Green Line: 1 Repeat Failures
Metro Gold Line: 2 Repeat Failures



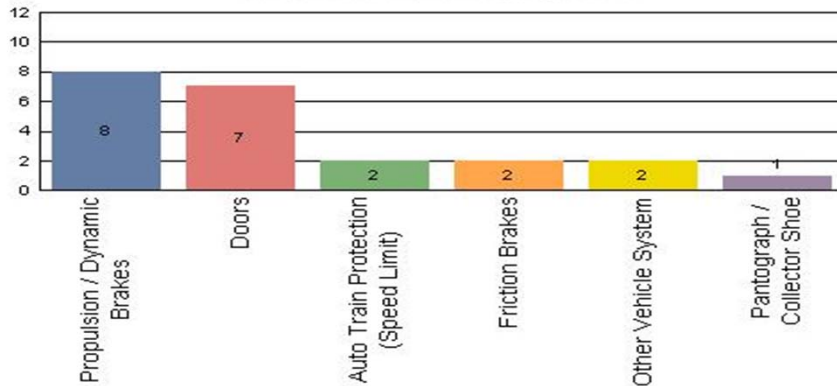
■ Blue Line ■ Red Line ■ Green Line ■ Gold Line

| Repeater Car Details - July 2011 | | | | | | | | |
|----------------------------------|-----------|---------|-----------|---------|------------|---------|-----------|---------|
| System | Blue Line | | Red Line | | Green Line | | Gold Line | |
| | Car # | Repeats | Car # | Repeats | Car # | Repeats | Car # | Repeats |
| Automatic Train Protection | | | 576 | 1 | | | | |
| Destination Signs | | | | | | | | |
| Doors | | | 536 | 1 | | | 725 | 2 |
| HVAC | 112 | 2 | 537 | 2 | | | | |
| | | | 539 | 1 | | | | |
| | | | 583 | 2 | | | | |
| Low Air Pressure | | | | | 201 | 1 | | |
| Propulsion/Dynamic Brake | 119 | 2 | 522 | 1 | | | | |
| | 158 | 1 | 560 | 2 | | | | |
| | 166 | 1 | 579 | 1 | | | | |
| TOTALS | 6 | | 11 | | 1 | | 2 | |

Major Incidents July 2011

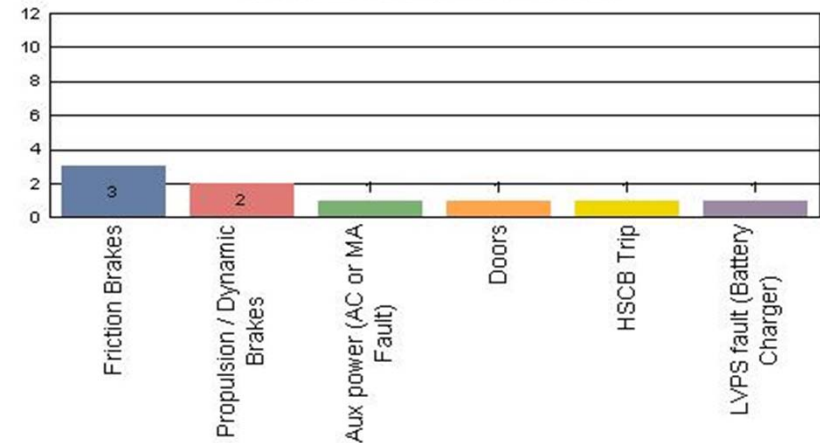
Metro Blue Line

Top Incident Categories



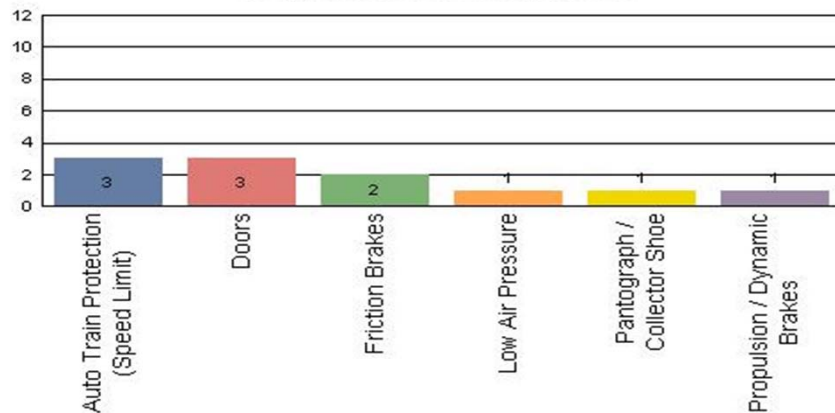
Metro Red Line

Top Incident Categories



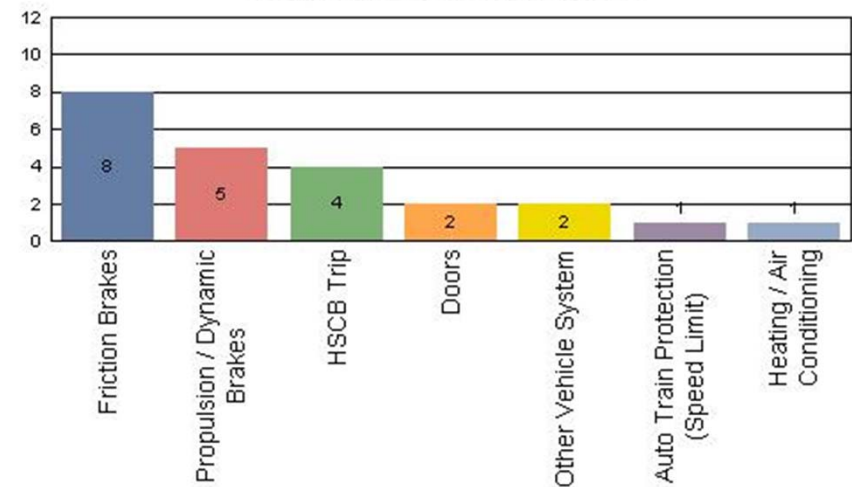
Metro Green Line

Top Incident Categories



Metro Gold Line

Top Incident Categories



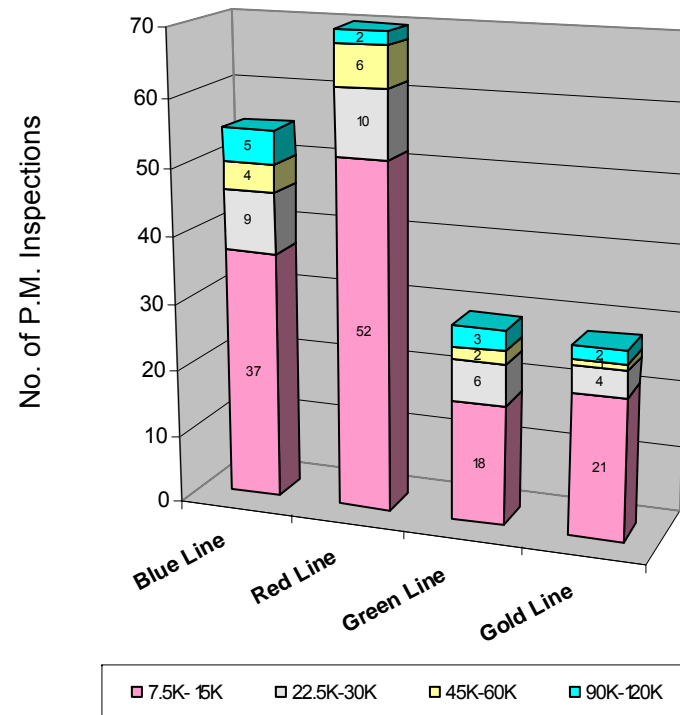
Preventative Maintenance Compliance

July 2011

| PM Compliance | Aug-10 | Sep-10 | Oct-10 | Nov-10 | Dec-10 | Jan-11 | Feb-11 | Mar-11 | Apr-11 | May-11 | Jun-11 | Jul-11 |
|---------------|--------|--------|--------|--------|--------|--------|--------|--------|--------|--------|--------|--------|
| Blue Line | 100% | 100% | 100% | 100% | 100% | 100% | 100% | 100% | 100% | 100% | 100% | 100% |
| Red Line | 100% | 97% | 91% | 97% | 100% | 100% | 97% | 100% | 100% | 90% | 100% | 100% |
| Green Line | 100% | 100% | 100% | 100% | 100% | 100% | 100% | 100% | 100% | 100% | 100% | 100% |
| Gold Line | 100% | 100% | 100% | 100% | 100% | 100% | 100% | 100% | 100% | 100% | 100% | 100% |

July 2011 Preventative Maintenance Inspections

| No. of P.M. Inspections | 7.5K-15K | 22.5K-30K | 45K-60K | 90K-120K | Totals |
|-------------------------|----------|-----------|---------|----------|--------|
| Blue Line | 37 | 9 | 4 | 5 | 55 |
| Red Line | 52 | 10 | 6 | 2 | 70 |
| Green Line | 18 | 6 | 2 | 3 | 29 |
| Gold Line | 21 | 4 | 1 | 2 | 28 |
| Totals: | 128 | 29 | 13 | 12 | 182 |

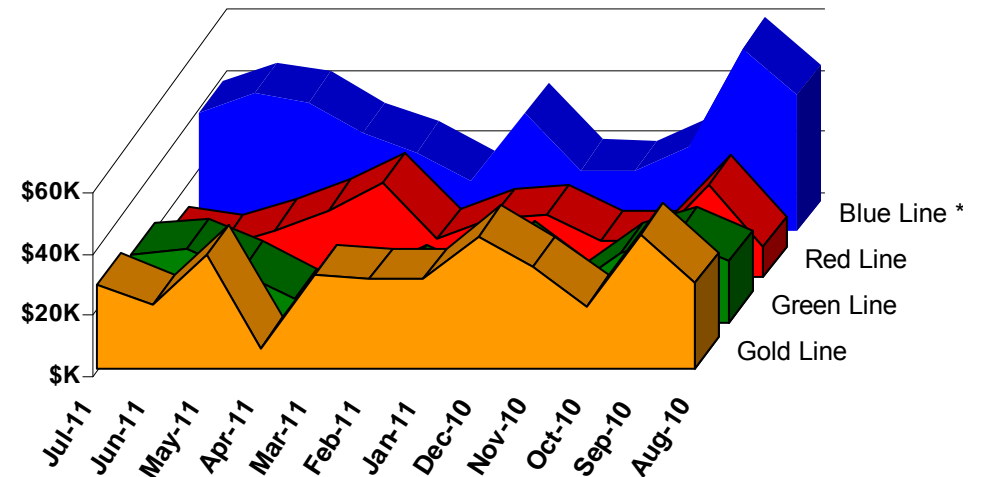


Vandalism & Graffiti Report

July 2011

| | Aug-10 | Sep-10 | Oct-10 | Nov-10 | Dec-10 | Jan-11 | Feb-11 | Mar-11 | Apr-11 | May-11 | Jun-11 | Jul-11 | Year-to-Date |
|-------------|--------|--------|--------|--------|--------|--------|--------|--------|--------|--------|--------|--------|--------------|
| Blue Line * | \$44K | \$60K | \$27K | \$19K | \$20K | \$39K | \$16K | \$26K | \$32K | \$42K | \$45K | \$39K | \$410K |
| Red Line | \$10K | \$30K | \$12K | \$12K | \$20K | \$19K | \$12K | \$31K | \$22K | \$15K | \$10K | \$13K | \$205K |
| Green Line | \$20K | \$28K | \$23K | \$10K | \$23K | \$7K | \$15K | \$7K | \$8K | \$16K | \$24K | \$22K | \$205K |
| Gold Line | \$28K | \$44K | \$20K | \$33K | \$44K | \$29K | \$29K | \$31K | \$7K | \$37K | \$21K | \$28K | \$351K |
| Totals: | \$102K | \$162K | \$82K | \$75K | \$107K | \$94K | \$73K | \$94K | \$68K | \$111K | \$100K | \$102K | \$1,171K |

| July 2011 Vandalism & Graffiti - All Rail | | | | |
|---|-------|----------|-----------|-----------|
| | Qty | Labor | Materials | Totals |
| Windows replaced | 6 | \$2,142 | \$1,009 | \$3,151 |
| Vandal Shields | 345 | \$9,891 | \$3,837 | \$13,728 |
| Seats Cleaned | 935 | \$2,566 | \$0 | \$2,566 |
| Seats Replaced | 160 | \$5,040 | \$6,542 | \$11,582 |
| Graffiti removal - other | 906 | \$19,701 | \$4,045 | \$23,746 |
| Repainting panels | 2 | \$40,227 | \$6,845 | \$47,072 |
| Totals for June 2011 | 2,354 | \$79,567 | \$22,278 | \$101,845 |



* Blue Line totals include vandalism & graffiti removal from the P2000 cars that will soon be used on the Expo Line.

Graffiti Pictures July 2011

Blue Line



Green Line



Gold Line

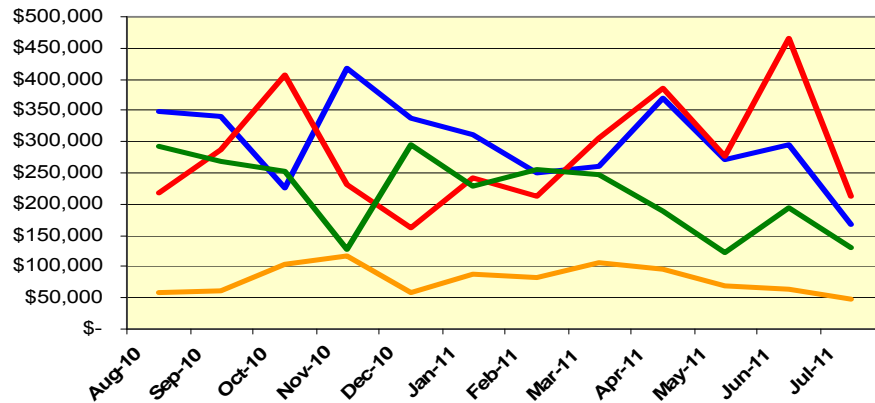


Material and Labor Costs

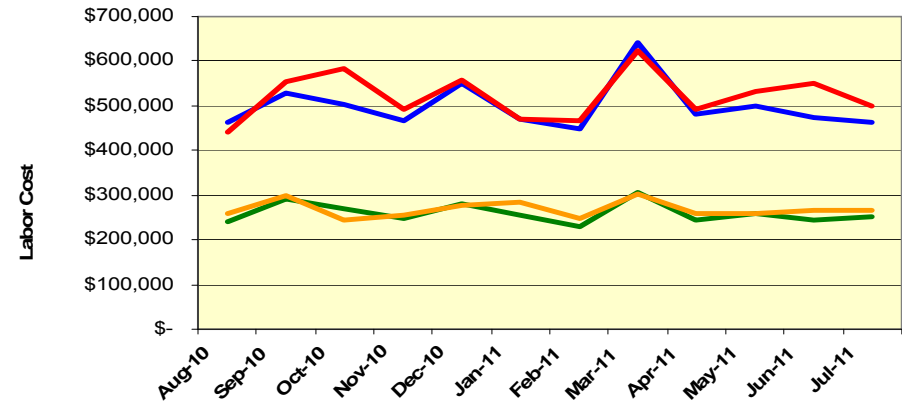
July 2011

| MATERIALS | Aug-10 | Sep-10 | Oct-10 | Nov-10 | Dec-10 | Jan-11 | Feb-11 | Mar-11 | Apr-11 | May-11 | Jun-11 | Jul-11 |
|------------|------------|------------|------------|------------|------------|------------|------------|------------|--------------|------------|--------------|------------|
| Blue Line | \$ 347,681 | \$ 341,681 | \$ 225,412 | \$ 416,656 | \$ 337,959 | \$ 311,345 | \$ 249,678 | \$ 259,887 | \$ 368,467 | \$ 272,272 | \$ 294,179 | \$ 167,328 |
| Red Line | \$ 219,030 | \$ 285,906 | \$ 406,465 | \$ 230,298 | \$ 162,960 | \$ 240,990 | \$ 213,323 | \$ 305,345 | \$ 386,455 | \$ 277,113 | \$ 466,346 | \$ 212,074 |
| Green Line | \$ 291,938 | \$ 267,489 | \$ 253,619 | \$ 128,574 | \$ 295,924 | \$ 228,636 | \$ 255,578 | \$ 247,907 | \$ 189,460 | \$ 121,859 | \$ 194,750 | \$ 129,976 |
| Gold Line | \$ 57,693 | \$ 61,673 | \$ 104,711 | \$ 117,573 | \$ 58,796 | \$ 86,984 | \$ 82,141 | \$ 105,452 | \$ 96,824 | \$ 67,967 | \$ 64,397 | \$ 47,760 |
| Totals | \$ 916,342 | \$ 956,749 | \$ 990,206 | \$ 893,102 | \$ 855,640 | \$ 867,955 | \$ 800,720 | \$ 918,591 | \$ 1,041,206 | \$ 739,212 | \$ 1,019,672 | \$ 557,138 |

Material Costs



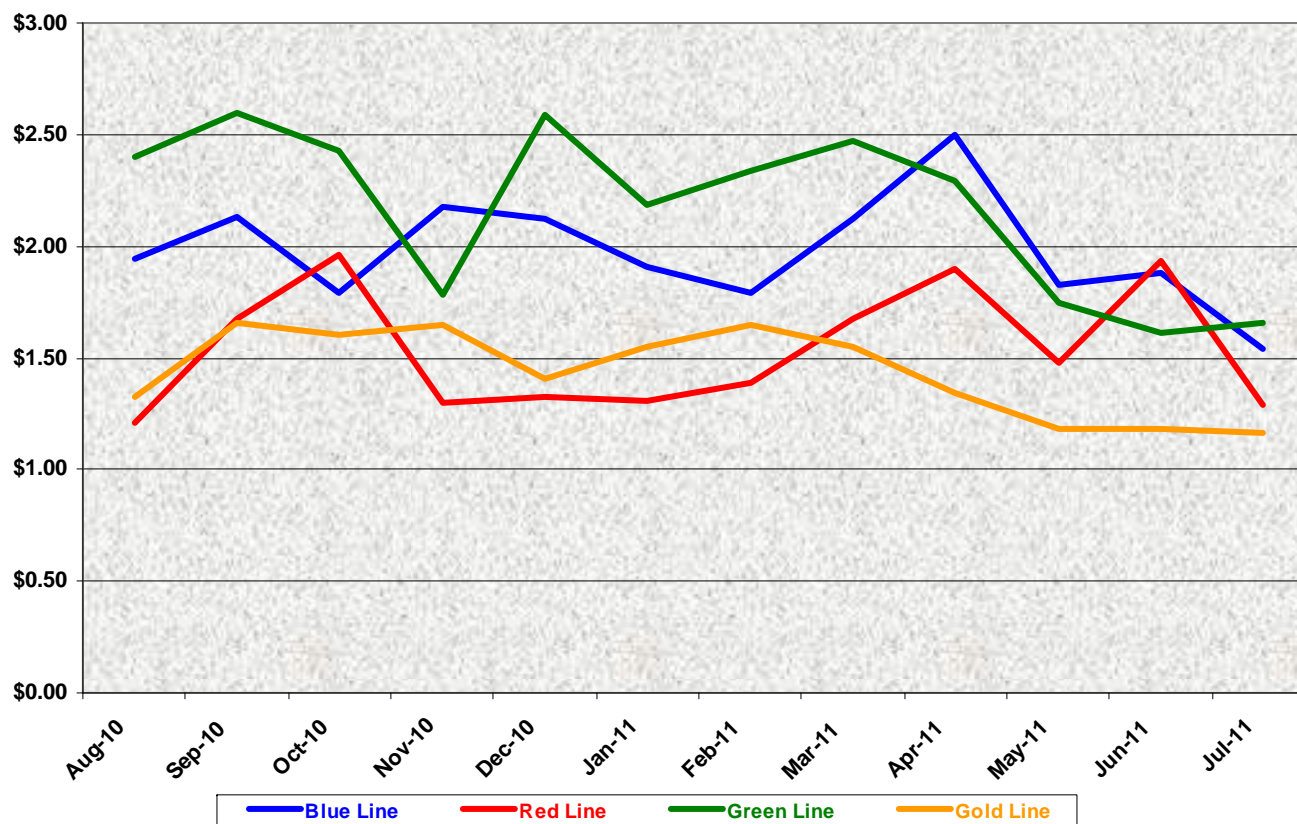
Labor Costs



| LABOR | Aug-10 | Sep-10 | Oct-10 | Nov-10 | Dec-10 | Jan-11 | Feb-11 | Mar-11 | Apr-11 | May-11 | Jun-11 | Jul-11 |
|------------|-------------|-------------|-------------|-------------|-------------|-------------|-------------|-------------|-------------|-------------|-------------|-------------|
| Blue Line | \$ 462,218 | \$ 529,087 | \$ 504,876 | \$ 466,805 | \$ 549,827 | \$ 470,555 | \$ 447,928 | \$ 642,540 | \$ 480,658 | \$ 500,263 | \$ 475,354 | \$ 464,468 |
| Red Line | \$ 442,482 | \$ 555,982 | \$ 581,709 | \$ 491,124 | \$ 556,636 | \$ 472,105 | \$ 467,849 | \$ 622,201 | \$ 493,104 | \$ 531,171 | \$ 550,464 | \$ 500,504 |
| Green Line | \$ 241,807 | \$ 291,569 | \$ 269,647 | \$ 249,736 | \$ 279,447 | \$ 255,429 | \$ 230,329 | \$ 305,821 | \$ 244,809 | \$ 257,678 | \$ 243,969 | \$ 250,617 |
| Gold Line | \$ 257,900 | \$ 299,833 | \$ 245,423 | \$ 255,054 | \$ 278,165 | \$ 285,821 | \$ 248,537 | \$ 303,998 | \$ 259,784 | \$ 257,114 | \$ 264,854 | \$ 265,256 |
| Totals | \$1,404,407 | \$1,676,471 | \$1,601,654 | \$1,462,719 | \$1,664,075 | \$1,483,910 | \$1,394,643 | \$1,874,560 | \$1,478,355 | \$1,546,225 | \$1,534,641 | \$1,480,845 |

Cost Per Mile July 2011

| Cost per mile: | Aug-10 | Sep-10 | Oct-10 | Nov-10 | Dec-10 | Jan-11 | Feb-11 | Mar-11 | Apr-11 | May-11 | Jun-11 | Jul-11 | Average |
|----------------|--------|--------|--------|--------|--------|--------|--------|--------|--------|--------|--------|--------|---------|
| Blue Line | \$1.95 | \$2.13 | \$1.79 | \$2.18 | \$2.12 | \$1.91 | \$1.79 | \$2.12 | \$2.50 | \$1.83 | \$1.88 | \$1.54 | \$1.98 |
| Red Line | \$1.21 | \$1.67 | \$1.96 | \$1.30 | \$1.33 | \$1.31 | \$1.39 | \$1.67 | \$1.90 | \$1.48 | \$1.93 | \$1.29 | \$1.54 |
| Green Line | \$2.40 | \$2.60 | \$2.43 | \$1.78 | \$2.59 | \$2.19 | \$2.34 | \$2.47 | \$2.30 | \$1.74 | \$1.61 | \$1.66 | \$2.17 |
| Gold Line | \$1.33 | \$1.65 | \$1.60 | \$1.65 | \$1.41 | \$1.55 | \$1.65 | \$1.55 | \$1.35 | \$1.18 | \$1.18 | \$1.17 | \$1.44 |



No facility costs are included

Absences vs. Overtime

July 2011

| ABSENCE TYPE and HOURS | 3940 | 3941 | 3942 | 3943 | 3944 | Total |
|--------------------------------------|-------------|--------------|--------------|--------------|--------------|---------------|
| BER-BEREAVEMENT | 0.00 | 64.00 | 0.00 | 8.00 | 24.00 | 96.00 |
| CTO-COMPENSATORY TIME OFF | 0.00 | 90.00 | 68.00 | 4.00 | 80.00 | 242.00 |
| CVA - CASUAL VACATION | 16.00 | 572.00 | 792.00 | 0.00 | 148.00 | 1,528.00 |
| EFH-EMG. FLOAT HOL. | 8.00 | 40.00 | 136.00 | 40.00 | 32.00 | 256.00 |
| ETO-EXCUSED TIME OFF | 2.00 | 35.50 | 10.58 | 2.00 | 21.82 | 71.90 |
| FML-FAMILY CARE LEAVE | 0.00 | 256.00 | 371.00 | 44.00 | 280.00 | 951.00 |
| HLF-HOLIDAY FLOATING | 168.00 | 784.00 | 544.00 | 192.00 | 248.00 | 1,936.00 |
| HNP-HOLIDAY NOT PAID | 0.00 | 0.00 | 16.00 | 32.00 | 8.00 | 56.00 |
| HOL-HOLIDAY LEGAL | 80.00 | 520.00 | 472.00 | 128.00 | 80.00 | 1,280.00 |
| II-INDUSTRIAL INJURY | 0.00 | 352.00 | 0.00 | 0.00 | 0.00 | 352.00 |
| JUR-JURY DUTY | 8.00 | 88.00 | 32.00 | 0.00 | 8.00 | 136.00 |
| LC1-LABOR CODE 233 | 0.00 | 112.00 | 126.30 | 64.00 | 40.00 | 342.30 |
| LTI-OCCPIL/LONGTRM INJ LEAVE | 0.00 | 0.00 | 0.00 | 0.00 | 200.00 | 200.00 |
| MLN-MILITARY ABSENCE-UNPAID | 0.00 | 0.00 | 104.00 | 0.00 | 0.00 | 104.00 |
| OWP-OFF WITH PERMISSION | 0.00 | 4.00 | 0.00 | 0.00 | 24.00 | 28.00 |
| RTO-REQUESTED TIME OFF-NO PAY | 0.00 | 0.00 | 8.00 | 0.00 | 0.00 | 8.00 |
| SCK-SICK PAY | 0.00 | 280.00 | 160.00 | 44.00 | 32.00 | 516.00 |
| SCW-SICK WITHOUT PAY | 0.00 | 96.00 | 16.00 | 14.75 | 0.00 | 126.75 |
| VAC-VACATION | 248.00 | 786.00 | 786.00 | 525.00 | 484.00 | 2,829.00 |
| Total Absence Hours | 530 | 4,080 | 3,642 | 1,098 | 1,710 | 11,059 |
| Number of Work Force (assigned) | 24 | 109 | 102 | 49 | 50 | 334 |
| Full Work Force hours/month | 4,159 | 18,890 | 17,677 | 8,492 | 8,665 | 57,882 |
| Absence as a % of Work Force | 13% | 22% | 21% | 13% | 20% | 19% |
| | | | | | | |
| OVERTIME TYPE and HOURS | 3940 | 3941 | 3942 | 3943 | 3944 | Total |
| CTB-COMPENSATORY TIME TO BANK | 11 | 571 | 297 | 239 | 142 | 1260 |
| OTP-PREM OVERTIME | 319 | 1246 | 1552 | 708 | 1060 | 4886 |
| WLO-Worked Lunch Overtime | 3 | 30 | 75 | 66 | 57 | 231 |
| Total | 333 | 1848 | 1924 | 1013 | 1259 | 6377 |
| Overtime as a % of Work Force | 8% | 10% | 11% | 12% | 15% | 11% |
| | | | | | | |
| UNCOVERED ABSENCES | 3940 | 3941 | 3942 | 3943 | 3944 | Total |
| Absences FTE | 3 | 24 | 21 | 6 | 10 | 64 |
| OTP FTE | 2 | 11 | 11 | 6 | 7 | 37 |
| FTE Difference | 1 | 13 | 10 | 0 | 3 | 27 |

Rail Vehicle Engineering Project Summary

July 2011

Major Projects and Activities:

Active Projects (% Complete):

- | | | |
|---|---|---|
| ○ P2550 Vehicle Procurement (95%) | ○ P3010 Contractor Solicitation (10%) | ○ P865/P2020 Component Overhaul (6%) |
| ○ P865/P2020 EXPO Readiness (31%) | ○ Pro-tran1 Worker Protection – All Lines (44%) | ○ A650 Car Cleaning (10%) |
| ○ A650 Friction Brake Kit Overhaul (6%) | ○ P2000 Friction Brake Kit Overhaul (56%) | ○ P865/P2020 Vital Relay Calibration (6%) |
| ○ P865/P2020 Traction Motor Overhaul (2.2%) | ○ P865/P2020 DC Air Compressor Motor Overhaul (30%) | ○ P2000 New LED Destination Sign Prototype (100%) |
| ○ A650 Truck Modification with new 4 bolt design Traction Motor Mount - ABI (13%) | ○ A650 New Handrail – Bike Space (1%) | ○ P2000 Vital Relay Calibration (19%) |
| ○ MA Set Overhaul (2.9%) | | |

Projects In Development:

- | | | |
|--|------------------------------------|---|
| ○ A650 Refurbishment | ○ P2000 Signal Package Conversion | ○ P2000 Component Overhaul |
| ○ Bike Space – All Lines | ○ A650 Ribbed Rubber Flooring PRF | ○ P2000 Powered Axle Overhaul SOW |
| ○ P865/P2020 Auxiliary Static Inverter | ○ P2000 Master Controller Overhaul | ○ Systra Contract for Expo Fleet (ATP Safety Certification) |

Projects In Concept Stage:

- | | | |
|--|---|---|
| ○ P2000 HVAC Suttrak Units Overhaul Specification | ○ P2000 Doors Overhaul Specification | ○ P2000 Friction Brake Kit Overhaul Spec – Excluding Air Compressor |
| ○ A650 Tread Brake Unit (HPT) Upgrade (Yellow HPT) | ○ A650 Option GE Gear Unit Overhaul Spec. | ○ P2000 Slewing Ring Overhaul |

Fleet Projects:

- | | | |
|------------------------------------|---------------------|-----------------------------|
| ○ 37 Technical Request Forms (TRF) | ○ 34 Test Bulletins | ○ 21 Modification Bulletins |
|------------------------------------|---------------------|-----------------------------|

P2550 Vehicle Acceptance Program

July 2011

Vehicle Status Update:

- 48 cars at Metro of which 47 have been Conditionally Accepted and 10 have been Final Accepted
- 2 Prototype cars remain at AB's assembly site in Pittsburg being updated to latest configuration

Engineering Activities Update:

- Event recorder
 - In June AB's supplier, Faiveley, tested new software to addresses MVB issues. Results are currently under review by AB-Italy
 - Concurrently, new software from AB-Italy is on-site being tested to address issues with signal feedback to Event Recorder.
- Software Updates: The following software releases were approved and applied to the P2550 fleet:
 - IDU Software Release 2.0u
 - Gateway Software Release 20
 - Communication Control Software Release 6.0
 - ATP/TWC Software Release 4.10/1.3
- Board Failures: AB-STS developed new software to address issues with the multifunction PCB. Field testing scheduled for August 2011.

Overhauls:

- Brake Caliper Overhaul – 18-1/2 car-sets of calipers have been overhauled; 16 cars have overhauled calipers installed.

Production Car Status – Pittsburg:

- Cars 701& 702 - Re-configuration of cars in process, rewiring and repining of cables 100 % complete; scheduled to ship to L.A. by November 2011.
- Four inspection hold points are scheduled for August 2011.

Project Management:

- Contract spares are in process and delivered to Metro. Estimated at 85% complete, critical parts not yet delivered.
- Daily and bi-weekly meetings are scheduled with AB Management to address project issues.

QA-Warranty Program Projects Summary

July 2011

QA-WARRANTY

Staffing:

- Manpower shortage: 2 ERS (retired), 1 RWES (transferred out). Open FTE's to be filled shortly.

Administrative:

- OIG July 2011- QA Mgt. assigned lead role in executing RFS Executive Management compliance actions.
- All reports & records archived into QA-Warranty's Share Drive.
- MRL Warranty Cost Avoidance savings for July \$20,120.25.

Activities:

- Audits
 - Two spot audits conducted (Overhead Catenary System)
 - FAI's - P865/P2000 Truck vibration test performed on new Inverter software, Brake overhaul kits, Master Controllers & Vital Relays
- P2550:
 - Overseeing inspections & Mod Campaigns)
 - P2550 project vehicle 749 Conditionally Accepted. (7/29/11)
- A650 Base Buy & Option car fleet warranty
 - T/M bolt mount & Truck Frame Mod Campaign. (16 Trucks Modified to date)
- Tech support for Vendors / Contractors overhaul program discussions. (Gearboxes, Traction Motors, and Brake Systems)
- Tech support for Expo Line ATP/TWC Project – conduct line testing on Propulsion System during off-peak hours.
- Video Downloads (6-hours) information needed for law enforcement & administration investigations.
- Warranty Manual rewrite (2nd edition) - 70% complete.
- QA Manual rewrite (2nd edition) - 90% complete.

Rail Fleet Services Instruction July 2011

Training classes completed during the month of July 2011

| Description | Status | Start | End | Course Hours | Student Count | Training Hours |
|---|----------|-----------|-----------|--------------|---------------|----------------|
| Blue/Expo Line Training (P865/P2020 & P2000 LRV) | | | | | | |
| BASIC BUSINESS GRAMMAR | Complete | 7/14/2011 | 7/14/2011 | 3 | 1 | 3 |
| RFS SIEMENS 2000 HVAC | Complete | 7/1/2011 | 7/15/2011 | 64 | 5 | 320 |
| RFS SIEMENS 2000 GE HARMON ATP | Complete | 7/18/2011 | 7/22/2011 | 24 | 5 | 120 |
| RECORDS MANAGEMENT & INFO. SECURITY | Complete | 7/26/2011 | 7/26/2011 | 3 | 1 | 3 |

Total Blue Line Training (Hours): 446

Red Line Training (Breda A650 HRV):

| | | | | | | |
|--|----------|-----------|-----------|---|---|---|
| P-CARD TRAINING FOR CARD HOLDERS & AOS | Complete | 7/19/2011 | 7/19/2011 | 2 | 1 | 2 |
| RAIL SYSTEM SAFETY | Complete | 7/6/2011 | 7/6/2011 | 3 | 1 | 3 |

Total Red Line Training (Hours): 5

Green Line Training (P2000 LRVs):

| | | | | | | |
|--|----------|-----------|-----------|---|---|---|
| P-CARD TRAINING FOR CARD HOLDERS & AOS | Complete | 7/19/2011 | 7/19/2011 | 2 | 1 | 2 |
| DRUG AND ALCOHOL (SAFETY SENSITIVE) | Complete | 7/19/2011 | 7/19/2011 | 2 | 1 | 2 |
| RECORDS MANAGEMENT & INFO. SECURITY | Complete | 7/26/2011 | 7/26/2011 | 3 | 1 | 3 |

Total Green Line Training (Hours): 7

Gold Line Training (P2550 LRVs):

0

Total Gold Line Training (Hours): 0

Total Rail Fleet Services Instruction for the month of July 2011 (Hours): 458.0

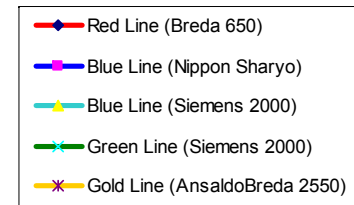
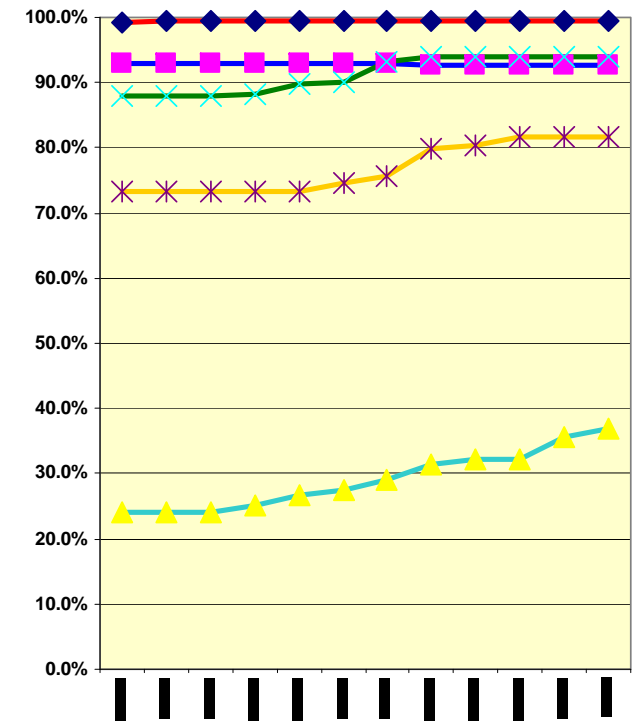
Core Vehicle Training Completed:

BLUE RED GREEN GOLD

Percentage of core vehicle training complete: 92.7% 99.5% 93.9% 81.7%
Siemens 2000 training complete: 36.8% N/A N/A N/A

Average Specialist Rail Experience Level in Years: 11.7 11.7 8.7 9.9

Core Training Completed



Variations caused by new hires, employee transfers, & training completed