



Rail Fleet Services Monthly Report June 2011

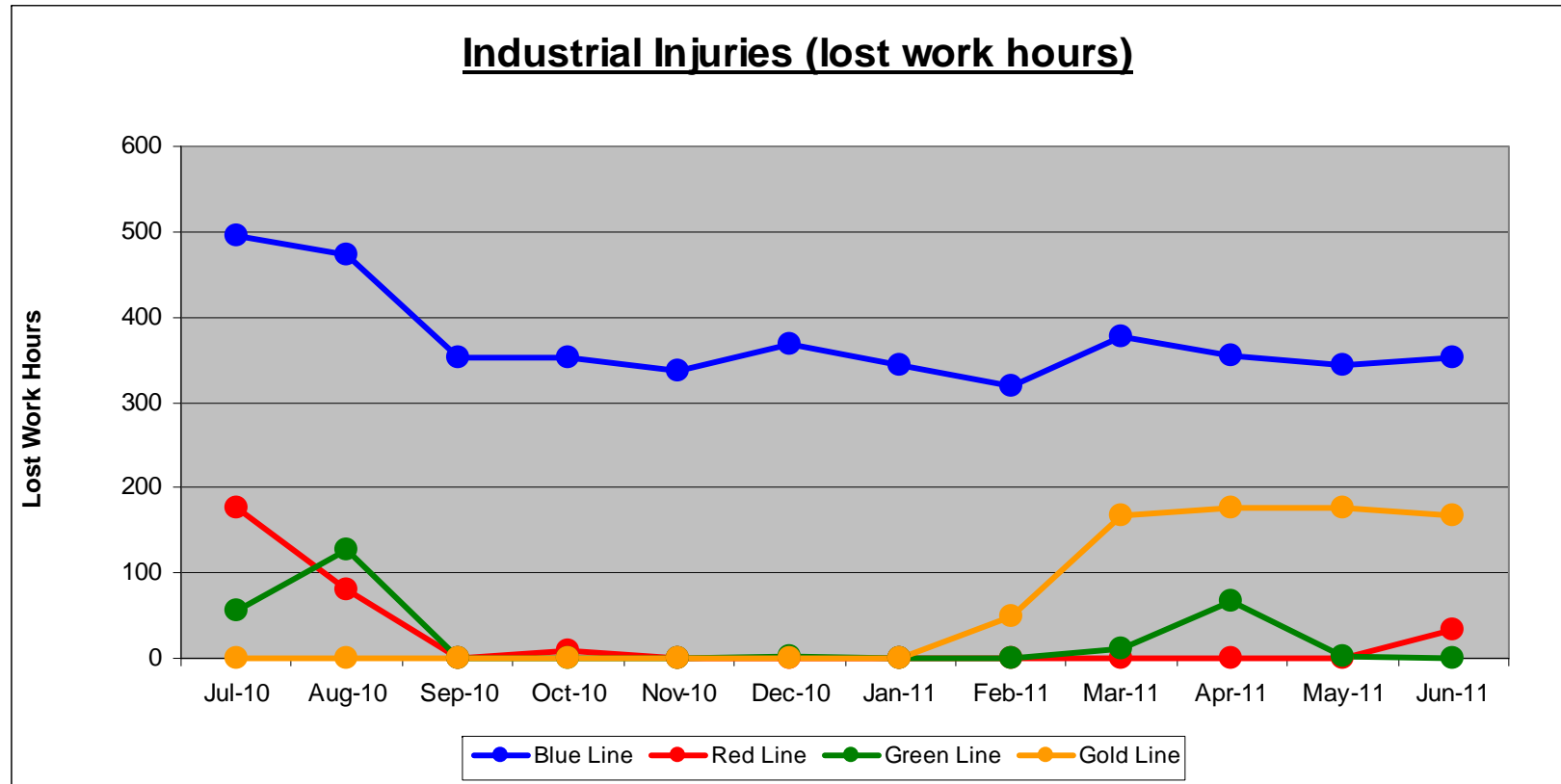


Metro

Table of Contents

•	Safety	
–	Industrial Injuries	Page 3
–	Rail Vehicle Accidents & Major Incidents	Page 4
•	Customer Service	
–	Service Delivery – AM/PM Pull-Outs	Page 5
–	Vehicle Utilization – Blue Line & Green Line	Page 6
–	Vehicle Utilization – Red Line & Gold Line	Page 7
–	Mean Miles Between Failures (Major)	Page 8
–	Repeat Failures (Major)	Page 9
•	Business Processes	
–	Reported Incidents	Page 10
–	Preventative Maintenance Compliance	Page 11
•	Finance	
–	Vandalism & Graffiti Costs	Page 12
–	Graffiti Pictures	Page 13
–	Material & Labor Costs	Page 14
–	Cost per mile	Page 15
–	Absence vs. Overtime	Page 16
•	Engineering	
–	Rail Vehicle Engineering Project Summary	Page 17
–	P2550 Vehicle Acceptance Program	Page 18
•	Quality Assurance	
–	Warranty Program Projects Summary	Page 19
•	Growth	
–	Rail Fleet Services Training	Page 21

Industrial Injuries – Lost Work Hours June 2011



	Employees		June 2011 Lost Work Hours			
	Assigned	Active	Service Attendant	Maint. Specialist	Body Repairer /Painter	Total Hrs.
Blue Line	109	104	0	176	176	352
Red Line	102	96	18	16	0	34
Green Line	47	41	0	0	0	0
Gold Line	51	47	168	0	0	168
Eng/QA/Admin	25	24	0	0	0	0
Totals	334	312	186	192	176	554

Rail Vehicle Accidents & Major Incidents

June 2011

Repair Costs	Jul-10	Aug-10	Sep-10	Oct-10	Nov-10	Dec-10	Jan-11	Feb-11	Mar-11	Apr-11	May-11	Jun-11	Totals
Blue Line	\$36,498	\$50,124	\$916	\$4,781	\$10,716	\$16,938	\$961	\$2,114	\$684	\$26,990	\$4,844	\$189	\$155,755
Red Line	\$0	\$0	\$0	\$0	\$0	\$562	\$0	\$0	\$0	\$0	\$0	\$0	\$562
Green Line	\$0	\$0	\$0	\$0	\$0	\$0	\$0	\$0	\$0	\$0	\$0	\$0	\$0
Gold Line	\$653	\$0	\$441	\$4,286	\$3,016	\$1,374	\$239	\$13	\$4,031	\$0	\$0	\$5,458	\$19,511
Totals	\$37,151	\$50,124	\$1,357	\$9,067	\$13,732	\$18,874	\$1,200	\$2,127	\$4,715	\$26,990	\$4,844	\$5,647	\$175,828

Rail Vehicle Accident Costs - June 2011				
Metro Blue Main Line				
Date	Incident #	Problem code	Incident Description	Cost
6/6/2011	2022427	Train vs. Pedestrian	10-72 at Del Amo Station, Train 2, T-236, Track 1, (103A) 145-106.	\$189.00
			TOTAL FOR METRO BLUE LINE	\$189.00
Metro Gold Line				
			GRAND TOTAL	189.00
Date	Incident #	Problem code	Incident Description	Cost
6/18/2011	2026357	Train vs Auto	10-73 at 60 freeway. Train 3 collided with a minivan at the freeway entrance (715B-746), T-55, Track 2, Southbound.	\$5,458.00
			TOTAL FOR METRO GOLD LINE	\$5,458.00
			GRAND TOTAL	5,647.00
(10-71) = Train vs. Object, (10-72) = Train vs. Pedestrian, (10-73) = Train vs. Vehicle (10-74) = Train vs. MTA Vehicle, (10-75) = Derailment				

Service Delivery June 2011

Blue Line – Fleet Size 69 cars

	<u>Vehicles Required</u>	<u>Average Available</u>	<u>% Up (Down)</u>
Pull Out			
Weekday:	60	64	107%
Weekend:	36	39	108%

Late Pullouts: 0 *

Monthly Mileage: 408,849 miles

Expo Line – Fleet Size 21 cars

Red Line - Fleet Size 104 cars

	<u>Vehicles Required</u>	<u>Average Available</u>	<u>% Up (Down)</u>
Pull Out			
Weekday:	70	79	113%
Weekend:	48	60	125%

Late Pullouts: 0 *

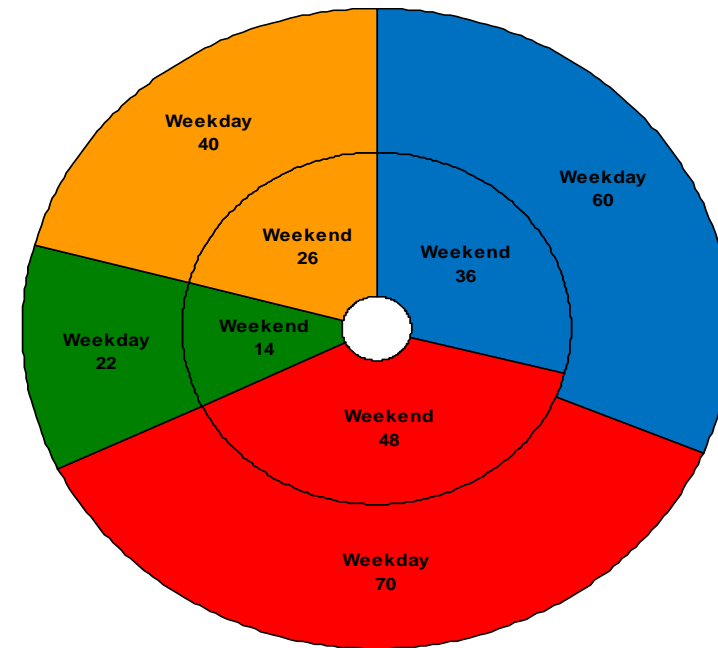
Monthly Mileage: 525,846 miles

Green Line – Fleet Size 29 cars

	<u>Vehicles Required</u>	<u>Average Available</u>	<u>% Up (Down)</u>
Pull Out			
Weekday:	22	25	114%
Weekend:	14	23	164%

Late Pullouts: 0 *

Monthly Mileage: 218,123 miles



■ Blue Line ■ Red Line ■ Green Line ■ Gold Line

Gold Line – Fleet Size 49 cars

P2550 – Fleet Size 45 cars

P2000 – Fleet Size 4 cars

	<u>Vehicles Required</u>	<u>Average Available</u>	<u>% Up (Down)</u>
Pull Out			
Weekday:	40	41	103%
Weekend:	26	40	154%

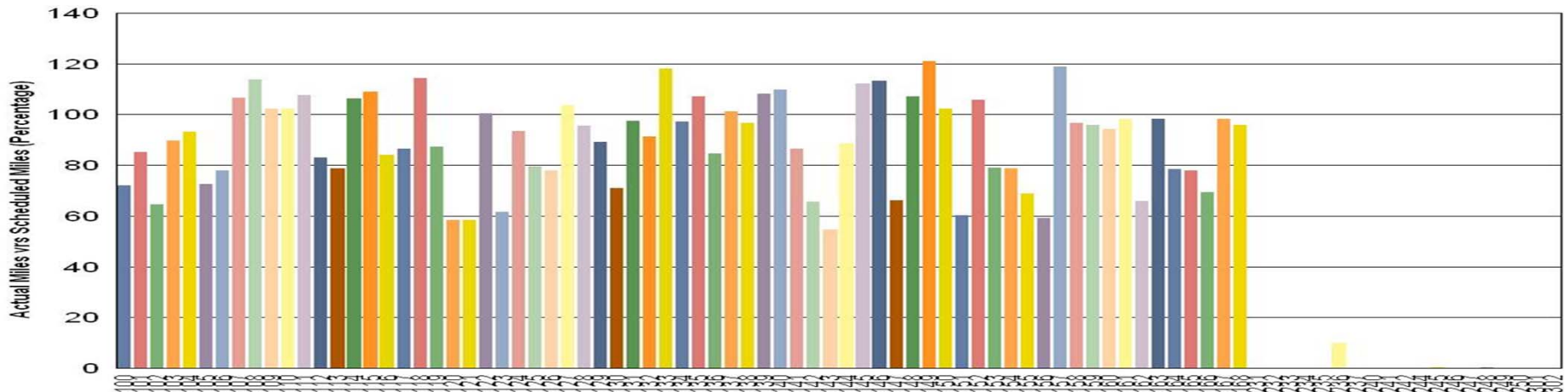
Late Pullouts: 0 *

Monthly Mileage: 278,336 miles

* Due to a vehicle related problem

Vehicle Utilization June 2011

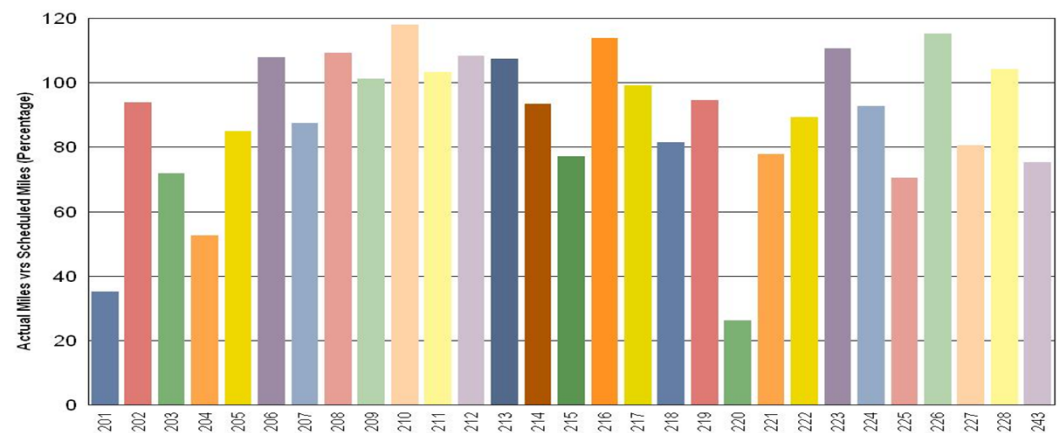
Metro Blue/Expo Line Fleet



The entire Expo Fleet (all 15 cars, 231-302) are not in revenue service at this time. Mileage will be minimal each month until the Expo Line opens.

Green Line – Vehicle 220 was down due to passenger intercom problems when coupled with another car.

Metro Green Line



Note: Percentage includes an average 4% mileage deduction for Yard mileage and Vehicle Testing.

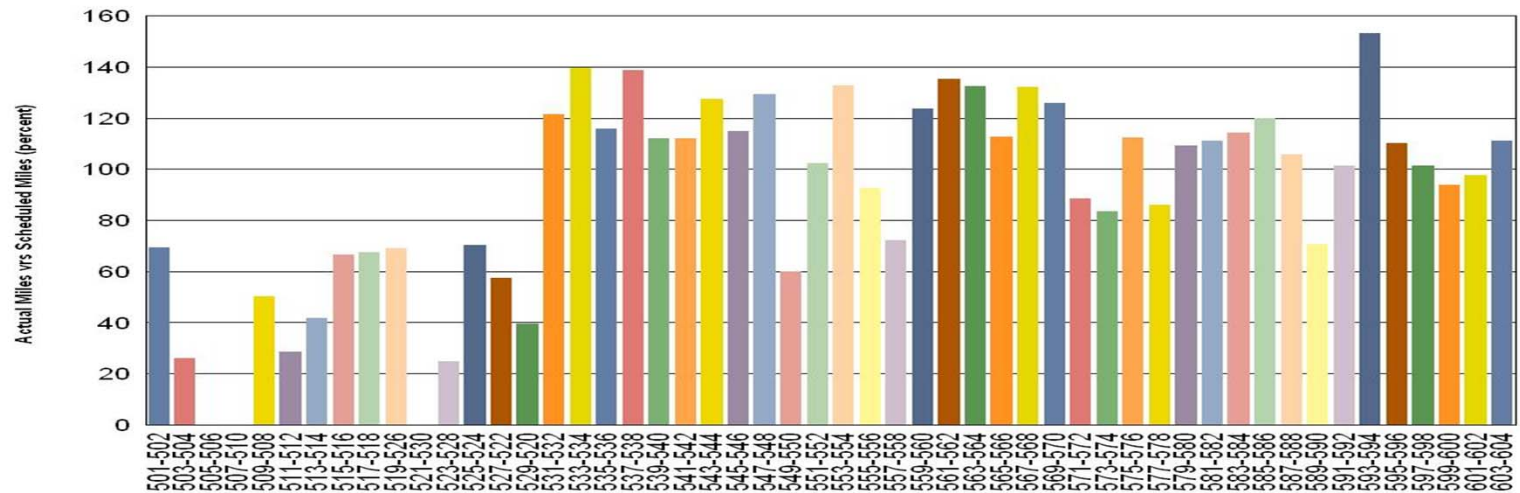
Vehicle Utilization

June 2011

Red Line – Vehicles 503/504, 505/506, 507/510, 511/512, 521/530, and 523/528 are flagged as low vehicle utilization due to Base-Buy fleet problems. Issues involve traction motor and replacement issues, inspection repairs, brake overhauls, and propulsion problems.

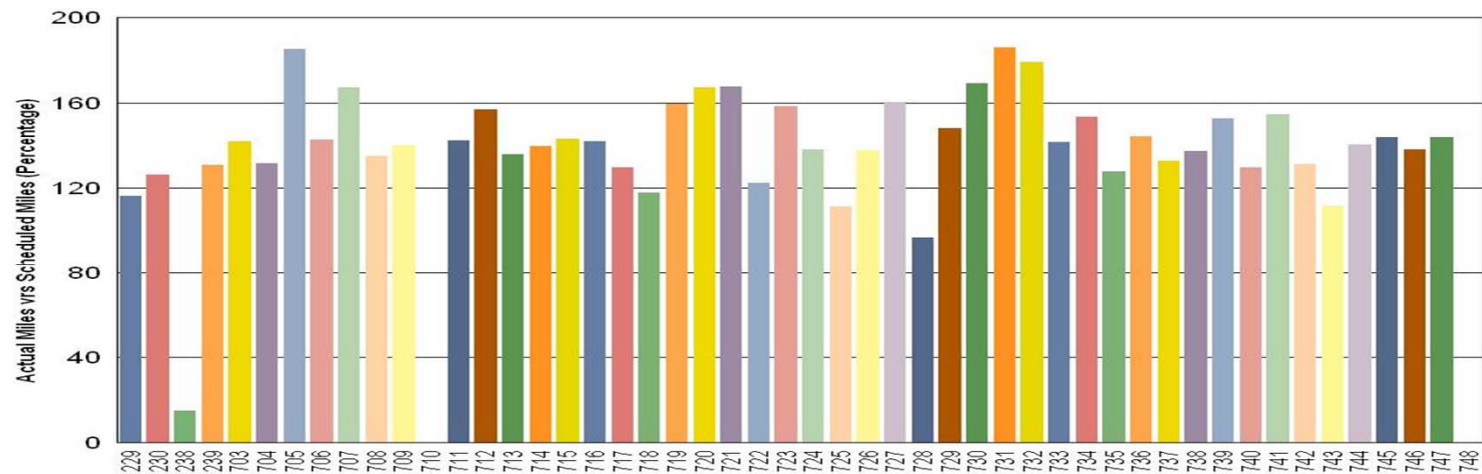
Percentage includes an average 4% mileage deduction for Yard mileage and Vehicle Testing.

Metro Red Line



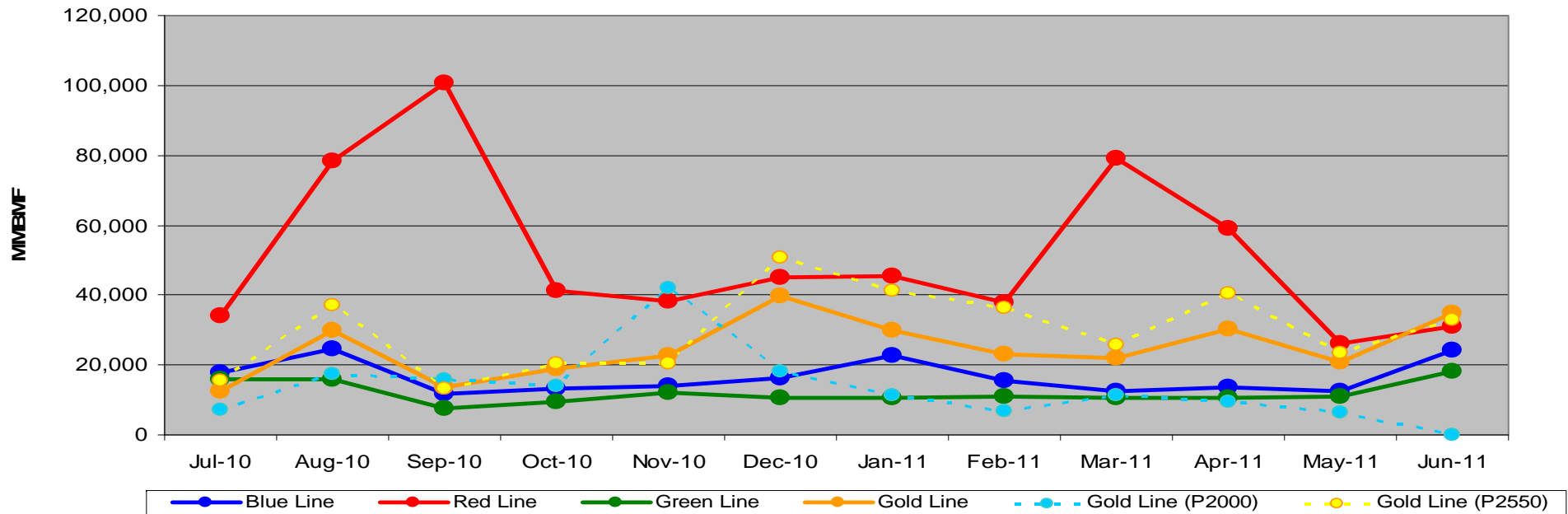
Metro Gold Line

Gold Line – Vehicle 238 was being repaired due to propulsion failure, Vehicle 710 was out of service due to parts delivery; and Vehicle 748 was conditionally accepted as it was held out of service due to modifications.



Mean Miles Between Failures (Major) June 2011

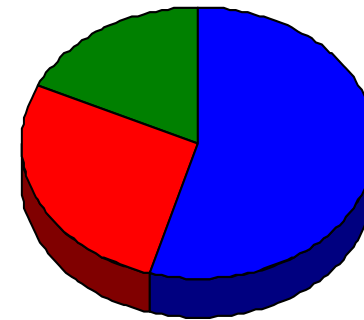
Mean Miles Between Major Failures (11-months)



	Jul-10	Aug-10	Sep-10	Oct-10	Nov-10	Dec-10	Jan-11	Feb-11	Mar-11	Apr-11	May-11	Jun-11
Blue Line	17,939	24,460	11,679	13,065	13,936	16,095	22,749	15,601	12,500	13,483	12,557	24,050
Red Line	34,189	78,217	100,589	41,239	38,293	45,211	45,357	37,732	79,178	59,089	26,084	30,932
Green Line	15,762	15,884	7,693	9,527	12,173	10,575	10,535	11,163	10,687	10,787	10,882	18,177
Gold Line	12,397	29,731	13,670	18,887	22,664	39,858	30,095	23,095	22,044	30,145	20,776	34,792
Gold Line (P2000)	7,204	17,557	15,935	14,002	42,007	18,326	11,208	6,689	11,413	9,625	6,377	10,351
Gold Line (P2550)	15,702	37,036	13,147	20,515	20,515	50,625	41,426	36,220	25,588	40,404	23,394	32,767

Repeat Failures (Major) June 2011

Metro Blue Line: 6 Repeat Failures
 Metro Red Line: 3 Repeat Failures
 Metro Green Line: 2 Repeat Failures
 Metro Gold Line: 0 Repeat Failures



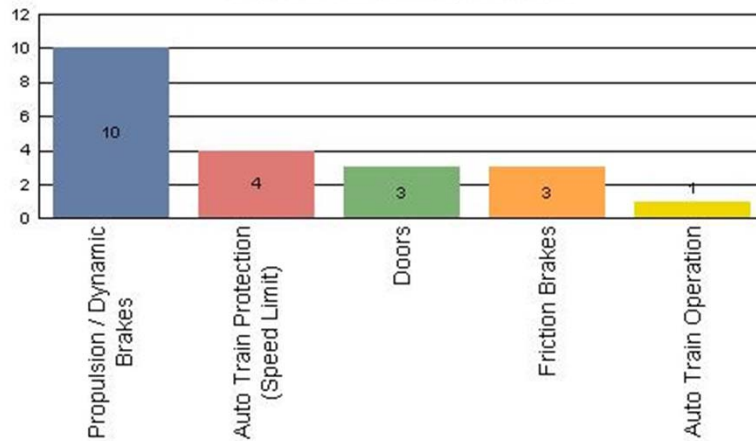
■ Blue Line ■ Red Line ■ Green Line ■ Gold Line

Repeater Car Details - June 2011								
System	Blue Line		Red Line		Green Line		Gold Line	
	Car #	Repeats	Car #	Repeats	Car #	Repeats	Car #	Repeats
Automatic Train Protection					225	1		
Destination Signs			556	1				
Doors	132	1						
HVAC					206	1		
Propulsion/Dynamic Brake	101	1	522	1				
	103	1	583	1				
	110	3						
TOTALS	6		3		2		0	

Major Incidents June 2011

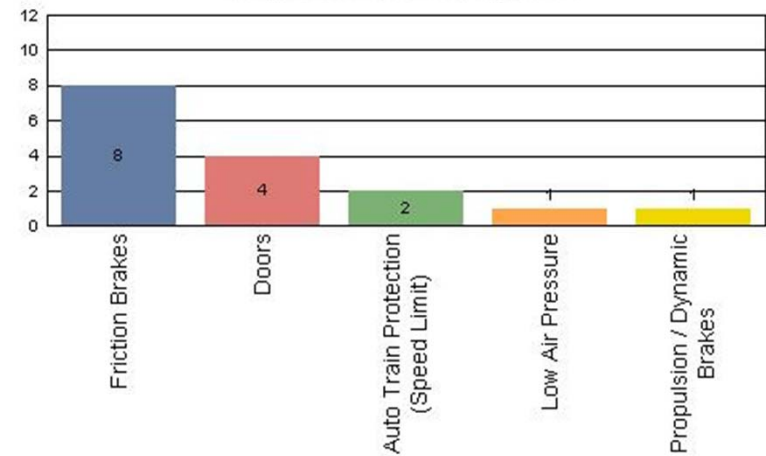
Metro Blue Line

Top Incident Categories



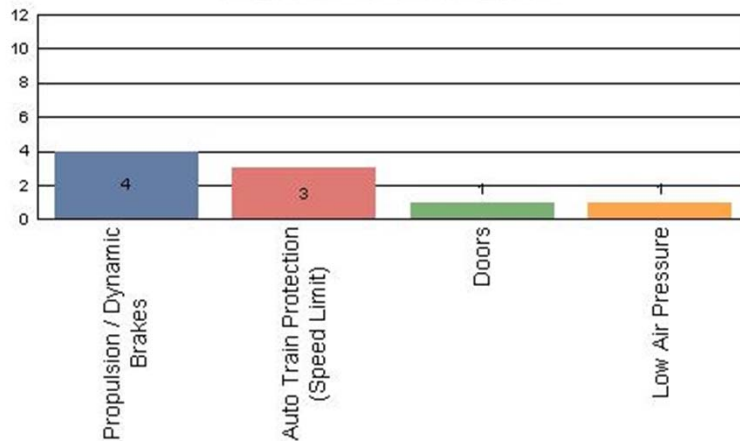
Metro Red Line

Top Incident Categories



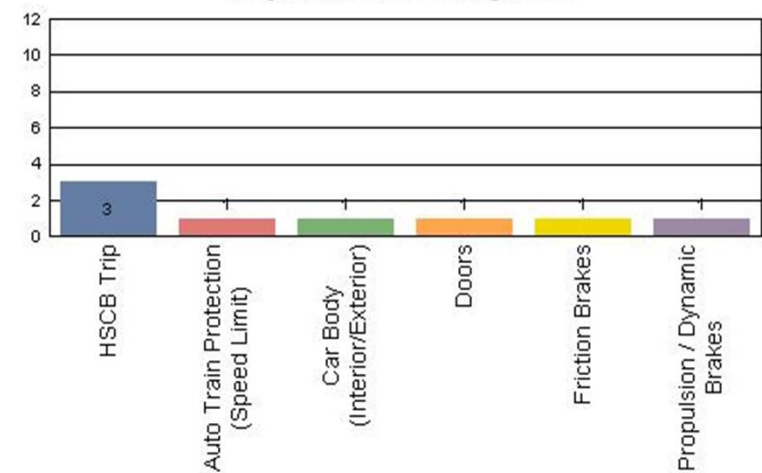
Metro Green Line

Top Incident Categories



Metro Gold Line

Top Incident Categories



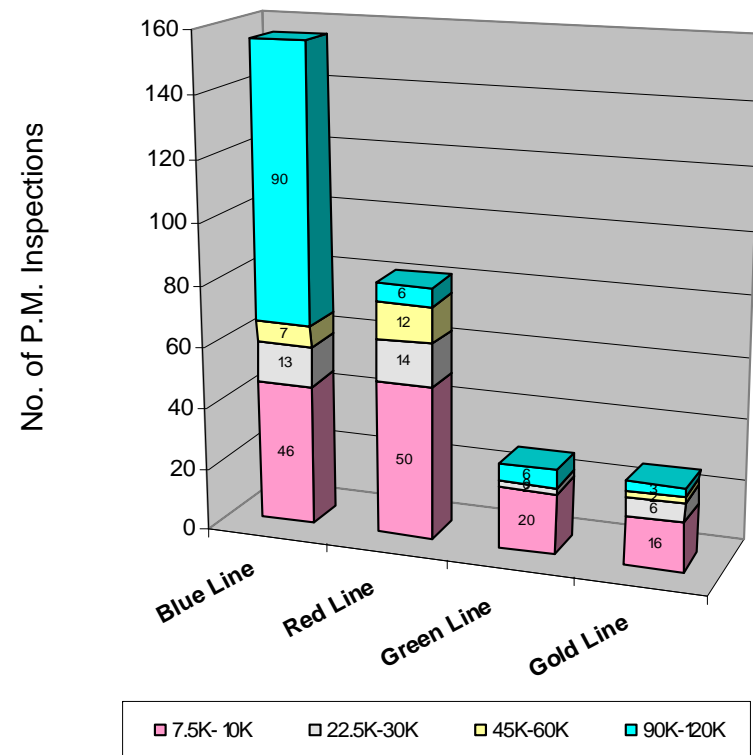
Preventative Maintenance Compliance

June 2011

PM Compliance	Jul-10	Aug-10	Sep-10	Oct-10	Nov-10	Dec-10	Jan-11	Feb-11	Mar-11	Apr-11	May-11	Jun-11
Blue Line	100%	100%	100%	100%	100%	100%	100%	100%	100%	100%	100%	100%
Red Line	97%	100%	97%	91%	97%	100%	100%	97%	100%	100%	90%	100%
Green Line	100%	100%	100%	100%	100%	100%	100%	100%	100%	100%	100%	100%
Gold Line	100%	100%	100%	100%	100%	100%	100%	100%	100%	100%	100%	100%

June 2011 Preventative Maintenance Inspections

No. of P.M. Inspections	7.5K- 10K	22.5K- 30K	45K-60K	90K-120K	Totals
Blue Line	46	13	7	90	156
Red Line	50	14	12	6	82
Green Line	20	2	0	6	28
Gold Line	16	6	2	3	27
Totals:	132	35	21	105	293

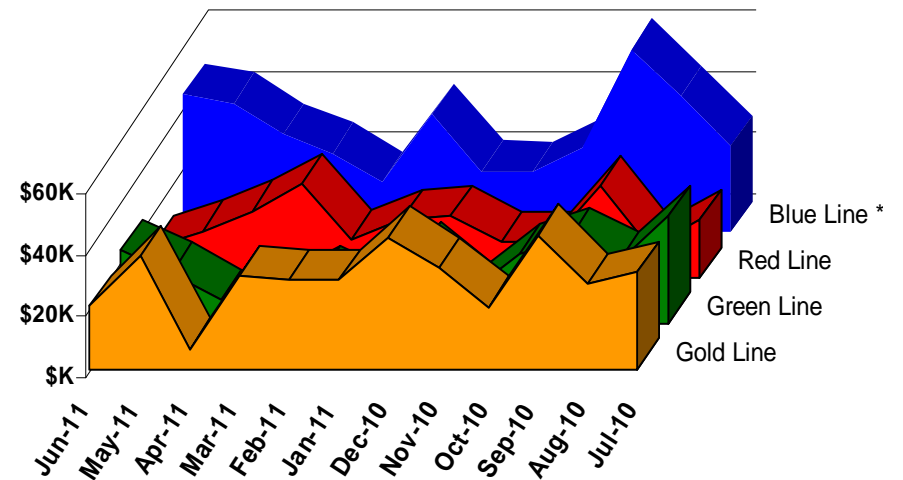


Vandalism & Graffiti Report

June 2011

	Jul-10	Aug-10	Sep-10	Oct-10	Nov-10	Dec-10	Jan-11	Feb-11	Mar-11	Apr-11	May-11	Jun-11	Year-to-Date
Blue Line *	\$28K	\$44K	\$60K	\$27K	\$19K	\$20K	\$39K	\$16K	\$26K	\$32K	\$42K	\$45K	\$399K
Red Line	\$19K	\$10K	\$30K	\$12K	\$12K	\$20K	\$19K	\$12K	\$31K	\$22K	\$15K	\$10K	\$211K
Green Line	\$35K	\$20K	\$28K	\$23K	\$10K	\$23K	\$7K	\$15K	\$7K	\$8K	\$16K	\$24K	\$218K
Gold Line	\$32K	\$28K	\$44K	\$20K	\$33K	\$44K	\$29K	\$29K	\$31K	\$7K	\$37K	\$21K	\$355K
Totals:	\$114K	\$102K	\$162K	\$82K	\$75K	\$107K	\$94K	\$73K	\$94K	\$68K	\$111K	\$100K	\$1,183K

June 2011 Vandalism & Graffiti - All Rail				
	Qty	Labor	Materials	Totals
Windows replaced	22	\$4,032	\$3,346	\$7,378
Vandal Shields	525	\$14,229	\$6,116	\$20,345
Seats Cleaned	1,035	\$693	\$2,630	\$3,323
Seats Replaced	133	\$4,190	\$5,105	\$9,295
Graffiti removal - other	1,055	\$28,670	\$7,326	\$35,996
Repainting panels	2	\$22,357	\$1,200	\$23,557
Totals for June 2011	2,772	\$74,171	\$25,723	\$99,894



* Blue Line totals include vandalism & graffiti removal from the P2000 cars that will soon be used on the Expo Line.

Graffiti Pictures June 2011

Blue Line



Green Line



Gold Line

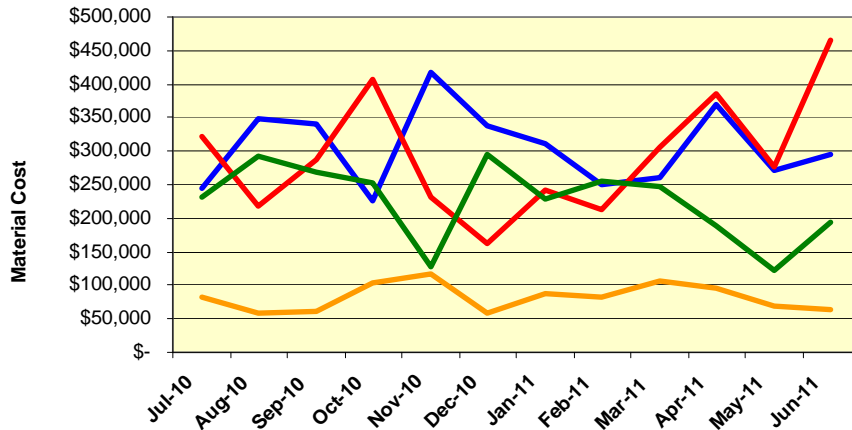


Material and Labor Costs

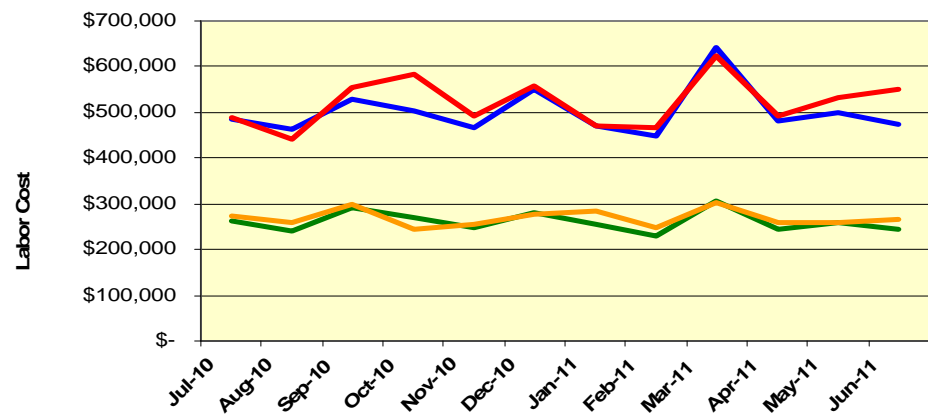
June 2011

MATERIALS	Jul-10	Aug-10	Sep-10	Oct-10	Nov-10	Dec-10	Jan-11	Feb-11	Mar-11	Apr-11	May-11	Jun-11
Blue Line	\$ 245,000	\$ 347,681	\$ 341,681	\$ 225,412	\$ 416,656	\$ 337,959	\$ 311,345	\$ 249,678	\$ 259,887	\$ 368,467	\$ 272,272	\$ 294,179
Red Line	\$ 321,375	\$ 219,030	\$ 285,906	\$ 406,465	\$ 230,298	\$ 162,960	\$ 240,990	\$ 213,323	\$ 305,345	\$ 386,455	\$ 277,113	\$ 466,346
Green Line	\$ 231,296	\$ 291,938	\$ 267,489	\$ 253,619	\$ 128,574	\$ 295,924	\$ 228,636	\$ 255,578	\$ 247,907	\$ 189,460	\$ 121,859	\$ 194,750
Gold Line	\$ 81,897	\$ 57,693	\$ 61,673	\$ 104,711	\$ 117,573	\$ 58,796	\$ 86,984	\$ 82,141	\$ 105,452	\$ 96,824	\$ 67,967	\$ 64,397
Totals	\$ 879,567	\$ 916,342	\$ 956,749	\$ 990,206	\$ 893,102	\$ 855,640	\$ 867,955	\$ 800,720	\$ 918,591	\$ 1,041,206	\$ 739,212	\$ 1,019,672

Material Costs



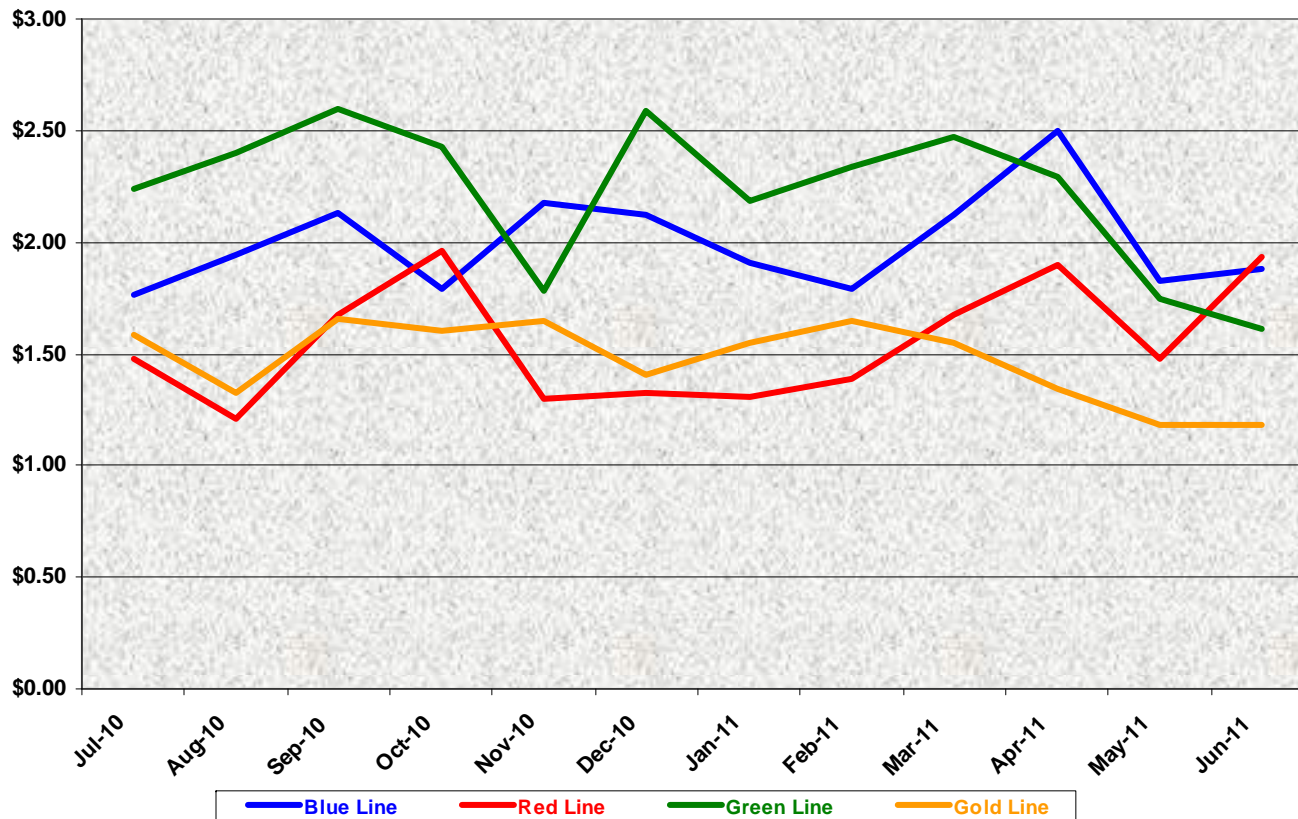
Labor Costs



LABOR	Jul-10	Aug-10	Sep-10	Oct-10	Nov-10	Dec-10	Jan-11	Feb-11	Mar-11	Apr-11	May-11	Jun-11
Blue Line	\$ 484,536	\$ 462,218	\$ 529,087	\$ 504,876	\$ 466,805	\$ 549,827	\$ 470,555	\$ 447,928	\$ 642,540	\$ 480,658	\$ 500,263	\$ 475,354
Red Line	\$ 487,742	\$ 442,482	\$ 555,982	\$ 581,709	\$ 491,124	\$ 556,636	\$ 472,105	\$ 467,849	\$ 622,201	\$ 493,104	\$ 531,171	\$ 550,464
Green Line	\$ 262,563	\$ 241,807	\$ 291,569	\$ 269,647	\$ 249,736	\$ 279,447	\$ 255,429	\$ 230,329	\$ 305,821	\$ 244,809	\$ 257,678	\$ 243,969
Gold Line	\$ 271,885	\$ 257,900	\$ 299,833	\$ 245,423	\$ 255,054	\$ 278,165	\$ 285,821	\$ 248,537	\$ 303,998	\$ 259,784	\$ 257,114	\$ 264,854
Totals	\$ 1,506,727	\$ 1,404,407	\$ 1,676,471	\$ 1,601,654	\$ 1,462,719	\$ 1,664,075	\$ 1,483,910	\$ 1,394,643	\$ 1,874,560	\$ 1,478,355	\$ 1,546,225	\$ 1,534,641

Cost Per Mile June 2011

Cost per mile:	Jul-10	Aug-10	Sep-10	Oct-10	Nov-10	Dec-10	Jan-11	Feb-11	Mar-11	Apr-11	May-11	Jun-11	Average
Blue Line	\$1.77	\$1.95	\$2.13	\$1.79	\$2.18	\$2.12	\$1.91	\$1.79	\$2.12	\$2.50	\$1.83	\$1.88	\$2.00
Red Line	\$1.48	\$1.21	\$1.67	\$1.96	\$1.30	\$1.33	\$1.31	\$1.39	\$1.67	\$1.90	\$1.48	\$1.93	\$1.55
Green Line	\$2.24	\$2.40	\$2.60	\$2.43	\$1.78	\$2.59	\$2.19	\$2.34	\$2.47	\$2.30	\$1.74	\$1.61	\$2.22
Gold Line	\$1.59	\$1.33	\$1.65	\$1.60	\$1.65	\$1.41	\$1.55	\$1.65	\$1.55	\$1.35	\$1.18	\$1.18	\$1.47



No facility costs are included

Absences vs. Overtime

June 2011

ABSENCE TYPE and HOURS	3940	3941	3942	3943	3944	Total
BER-BEREAVEMENT	0.00	24.00	0.00	24.00	8.00	56.00
CTO-COMPENSATORY TIME OFF	0.00	10.00	20.00	0.00	0.50	30.50
CVA - CASUAL VACATION	0.00	8.00	808.00	0.00	256.00	1,072.00
EFH-EMG. FLOAT HOL.	0.00	48.00	80.00	128.00	112.00	368.00
ETO-EXCUSED TIME OFF	0.00	40.80	10.21	3.50	21.60	76.11
FML-FAMILY CARE LEAVE	0.00	24.00	264.00	240.00	224.00	752.00
HLF-HOLIDAY FLOATING	72.00	928.00	440.00	239.50	200.00	1,879.50
II-INDUSTRIAL INJURY	0.00	352.00	18.45	0.00	0.00	370.45
JUR-JURY DUTY	0.00	8.00	8.00	0.00	8.00	24.00
LC1-LABOR CODE 233	56.00	106.00	150.81	56.00	96.00	464.81
LTI-OCCPIL/LONGTRM INJ LEAVE	0.00	0.00	0.00	0.00	168.00	168.00
MLN-MILITARY ABSENCE-UNPAID	0.00	0.00	168.00	32.00	0.00	200.00
RTO-REQUESTED TIME OFF-NO PAY	0.00	0.00	0.00	0.58	0.00	0.58
SCK-SICK PAY	16.00	84.20	57.00	73.00	62.00	292.20
SCW-SICK WITHOUT PAY	0.00	40.00	104.00	8.00	0.00	152.00
VAC-VACATION	16.00	978.60	632.00	318.67	357.00	2,302.27
Total Absence Hours	160	2,652	2,760	1,123	1,513	8,208
Number of Work Force (assigned)	25	109	102	47	51	334
Full Work Force hours/month	4,333	18,890	17,677	8,145	8,838	57,882
Absence as a % of Work Force	4%	14%	16%	14%	17%	14%
OVERTIME TYPE and HOURS	3940	3941	3942	3943	3944	Total
CTB-COMPENSATORY TIME TO BANK	32	705	1051	232	205	45
OTP-PREM OVERTIME	262	1171	1372	742	818	5856
WLO-Worked Lunch Overtime	1	34	59	61	56	186
Total	295	1909	2481	1035	1079	6086
Overtime as a % of Work Force	7%	10%	14%	13%	12%	11%
UNCOVERED ABSENCES	3940	3941	3942	3943	3944	Total
Absences FTE	1	15	16	6	9	47
OTP FTE	2	11	14	6	6	35
FTE Difference	-1	4	2	0	3	12

Rail Vehicle Engineering Project Summary

June 2011

Major Projects	
A650 Refurbishment ! Expo Readiness P865/P2000 Fleets ! P2000 Signal Package Conversion ! Protran Worker Protection Device P2000 Component Overhaul ! P2550 Vehicle Acceptance ! P3010 Vehicle Acquisition ! MBL Overhaul ! MRL Car Cleaning ! MRL Friction Brake Kit Overhaul ! P2000 Automatic Sanding ! Bike Space	
Technical Specifications	
MBL, MGL, MRL, MGD (all fleets):	P2000 HVAC Sutrak Units Overhaul! Systra Contract for Expo Fleet ! MBL Articulation Bellow! P2000 Doors ! P2000 Wheel/Axle Gear Box ! Powered Axle Overhaul SOW ! MBL Vital Relay Calibration ! Auxiliary Power Inverter ! Traction Motor Overhaul ! P2000 Friction Brake Kit Overhaul ! MBL Static Inverter ! P2000 Friction Brake Disc CT ! MBL DC Air Compressor Motor Overhaul
Active Test Bulletins	
MBL (P865/P2020):	Inspection interval investigation (5K-7.5K)! Door Capacitor! Replace GRS/TWC with H&K TWC! Hom! Journal Bearing ! Motor Alternator ! Transtechnik Inverter ! Hydraulic Damper ! Destination Curtain! MBL Brake Pad qualification! Shock Absorber
MRL (A650 Base):	DC-AC Traction Motor Blower ! A21 Power Supply! A16A1 Board ! Speed Sensor Removal ! Wheel - Bonatrans ! DC Traction Motor - Walco ! Friction Brake Kit !
MRL (A650 Option):	Emergency door seal! Air Spring! Brushes! Motor Evaporator ! Speed Sensor Removal ! Traction Motor Safety Hanger ! Shock Absorber ! Tie Rod Pin ! Hand Rail ! Blower Motor Impeller
MGDL (P2000):	Luminator LED Destination Sign
MGL (P2000):	Door Operator Assembly ! Electric Cabinet Cooling ! Exterior Mirror! Reconditioned Journal Bearing
Active Modification Bulletins	
MBL (P865/P2020):	Watch Gap, Wheelchair, Security Cameras! Gearbox Long Breather Tube ! Flashing Circuit ! Protran1! Door Capacitor ! Protran 1 Wayside Worker Protection
MBL (P2000):	Add TWC Route Select Feature! No Acceleration during ATP Overspeed !
MRL (A650 Option/Base):	Remove Trip Switch Wiring! Manual Controller Modification by American Transit! Front Door Latch! Replace End Door Threshold Plate! Dead Battery Start! Buss Bar Isolation! ATO Overspeed Brake Rate ! Bracket Power Cable Protection ! Coupler Shield
MGL (P2000):	Master Controller with New Cam Profiles ! Removal of Convex Mirror Head ! Protran 1 Wayside Worker Protection ! Disable Automatic Spin /Slide Sanding CKT
MGDL (P2000):	Battery Disconnect Decals
Active Technical Request Form	
MBL (P865/P2020):	Destination Signs! Journal Bearing ! Chopper Intake! Damper Assembly! Motor Alternator Set CB1 Tripping Problem! 3-Way Valve ! Berthing Bypass ! Brake Disc Edges
MRL (A650 Option/Base):	ATO Berthing! Flender Gearbox ! Gate Drive Power Supply ! Rectifier ! Door Latching Relay ! Thermistor & TLR Circuit Failures ! PA System & Air Whistle/Horn Faults ! Hand Assistance Strap ! Contact Adhesive Flooring ! Blower Motor Impeller ! Snubber Capacitor ! Vital Relays Calibration ! Berthing Bypass ! Step Ladder
MGL (P2000):	Door Operator Assemble Repair Vendor ! Air Vent Grille ! Exterior Rear View Mirror ! Sun Shade Gear Latch ! EMI Trip Faults! HVAC Motor ! Sunshade Gear Latch ! Vital Relays Calibration
MGDL (P2000/P2550):	Truck Trimming Investigation ! Operator Door Assembly Overhaul! Driver Cab Window Glass ! Vital Relays Calibration ! Key Pad for CCH is Obsolete - Find Vendor ! ATP Cab Signal Verification at Union Station Interlocking ! Cow Catcher

P2550 Vehicle Acceptance Program

June 2011

This report was unavailable this month.

QA-Warranty Program Projects Summary

June 2011

ADMINISTRATION ACTIVITIES

- (1) FTE Position open for an RWES. HR to test and qualify candidates. Test schedule pending.
- A650 Base Buy & Option car fleet warranty – T/M bolt mounts & truck mod campaign in full swing.
- P2550 project vehicle 748 conditionally accepted 6/24/11.
- RFP-3010 Technical Advisor for Warranty, QA, Testing, Materials & Workmanship Sections – on-going.
- Warranty Manual rewrite (2nd edition) - 65% complete.
- QA Manual rewrite (2nd edition) - 85% complete.
- QA Rail LRV and HRV Wheel Ultrasonic Test-Inspection Pilot Program is in place. Due to manpower shortage testing deferred until further notice.
- QA PMI & WO Audit Program – (announced/unannounced) Conducted Spot check (3) audits on WO repairs.
- OIG May 2010 – on-going review of rail car preventive maintenance inspection program is in final stages pending EO closeout letter.
- ERS daily admin support & M3 data entry ongoing at all divisions.
- ERS leader ensures all reports and records are archived into QA-Warranty Share Drive.

RED LINE ACTIVITIES

- ABI T/M Mount Failures/Truck Frame Modification Campaign: On-going.
- Engineering Support - Conduct technical investigations on Leveling valves found inoperative, Track brakes found leaks, and Alt motors found cable shortages.
- Support Division – with oil sampling, test friction brake overhauls, repair and test IC boards and inspect rotary actuators.
- First Article Inspections and testing – DC traction motors from Swiger.
- Performed spot check audits on brake resister grids and lateral shock absorbers.
- Prepared Tech Reports, Power-Point-Presentations and FAI reports filed in archive.
- Warranty returns, R&R parts & MTA labor savings being documented to account for Cost Avoidance savings. \$22,912.08.

BLUE LINE ACTIVITIES

- Support Expo Line ATP/TWC Project – continued line testing on propulsion system during off-peak hours. On-going.
- Support P2550 Test Bench Commissioning. Multiple tests and inspections. Help resolve operating issues with vendor Knorr.
- Support division – investigation on operation issues with (Door Systems, Lighting Systems, gearboxes, journal bearings).
- First Article inspections – P865/P2000 car destination sign curtains, truck vibration testing and new inverter software testing.
- Prepared Tech Reports, Power-Point-Presentations & FAI reports filed in archive
- Warranty returns, R&R parts & MTA labor savings being documented to account for Cost Avoidance savings. N/A

QA-Warranty Program Projects Summary

June 2011

GREEN LINE ACTIVITIES

- Support engineering - Conduct Technical Request investigations and troubleshoot problem found (IC boards, Master Controllers, Amber lights, Door Operations, Journal Bearing, and Mounting pins).
- Support Division – Investigating and testing vital relays, gear box leaks, pressed on wheel inspections, and CPU board failures.
- Support Vendors & Contractors working with gearbox overhauls, traction motors, and brake systems.
- First Article inspection and testing on kit overhauls 95% complete. Master controller 63% complete and Vital Relays complete.
- Support P2550 project and Gold Line onsite due to manpower shortage.
- Support Expo line testing with Siemen's car make ready.
- Prepared Tech Reports, Power-Point-Presentations & FAI reports are filed in archive.
- Warranty returns, R&R parts & MTA labor savings being documented to account for Cost Avoidance savings \$4902.34.

GOLD LINE ACTIVITIES

- P2550 Project – Travel to Pittsburgh CA for on site car inspection and assembly plant visit.
- P2550 Project - Download (6-8 hours) of video incidents for management, law enforcement & administration investigations.
- P2550 Contract Programs – Car inspection write ups and car acceptance. Oversee equipment testing, spare parts & warranty conditions are met.
- Performed QA acceptance inspection and testing on car 748.
- Conducted Spot Check Audits on (3) Brake Resistor Grids. ABI to resolve issues found.
- Worked with Knorr engineers resolving Test Bench operation issues.
- Continue supporting ABI on Contract Spares – on going.
- Project documentation, contract deliverables & maintenance records on-going.
- Support RFSTS Engineering with test issues and reliability tracking.
- Prepared Tech Reports, Power-Point-Presentations & FAI reports filed in archive.
- Warranty returns, R&R parts & MTA labor savings being documented to account for Cost Avoidance savings.

Rail Fleet Services Instruction

June 2011

Training classes completed during the month of June 2011

Description	Status	Start	End	Course Hours	Student Count	Training Hours
Blue Line Training - (865/2020 & P2000 LRV):						
RFS SIEMENS 2000 PROPULSION	Complete	5/16/2011	6/3/2011	64	7	448
RFS SIEMENS 2000 FRICTION BRAKES	Complete	6/6/2011	6/15/2011	40	5	200
RFS SIEMENS 2000 T/B, SANDERS	Complete	6/16/2011	6/17/2011	4	5	20
RFS SIEMENS 2000 TRUCK	Complete	6/20/2011	6/30/2011	24	6	144
Total Blue Line Training (Hours):						812

Red Line Training (Breda A650 HRV):

32 HOUR GENERAL INDUSTRY SAFETY COURSE	Complete	5/6/2011	6/10/2011	32	2	64
Total Red Line Training (Hours):						64

Green Line Training (P2000 LRVs):

32 HOUR GENERAL INDUSTRY SAFETY COURSE	Complete	5/6/2011	6/10/2011	32	1	32
EXCEL 2003 - PIVOT TABLES	Complete	6/21/2011	6/21/2011	2.5	1	2.5
FIRST TIME SUPERVISION	Complete	6/2/2011	6/3/2011	10	1	10
Total Green Line Training (Hours):						32

Gold Line Training (P2550 LRVs):

RFS CAR HOIST OPERATION	Complete	6/14/2011	6/14/2011	2	3	6
32 HOUR GENERAL INDUSTRY SAFETY COURSE	Complete	5/6/2011	6/10/2011	32	1	32
Total Gold Line Training (Hours):						38

Total Rail Fleet Services Instruction for the month of June 2011 (Hours): 946.0

Core Vehicle Training Completed:

	<u>BLUE</u>	<u>RED</u>	<u>GREEN</u>	<u>GOLD</u>
Percentage of core vehicle training complete:	92.7%	99.5%	93.9%	81.7%
Siemens 2000 training complete:	35.5%	N/A	N/A	N/A
Average Specialist Rail Experience Level in Years:	11.6	11.6	8.6	9.8

Core Training Completed

