



Rail Fleet Services Monthly Report May 2011

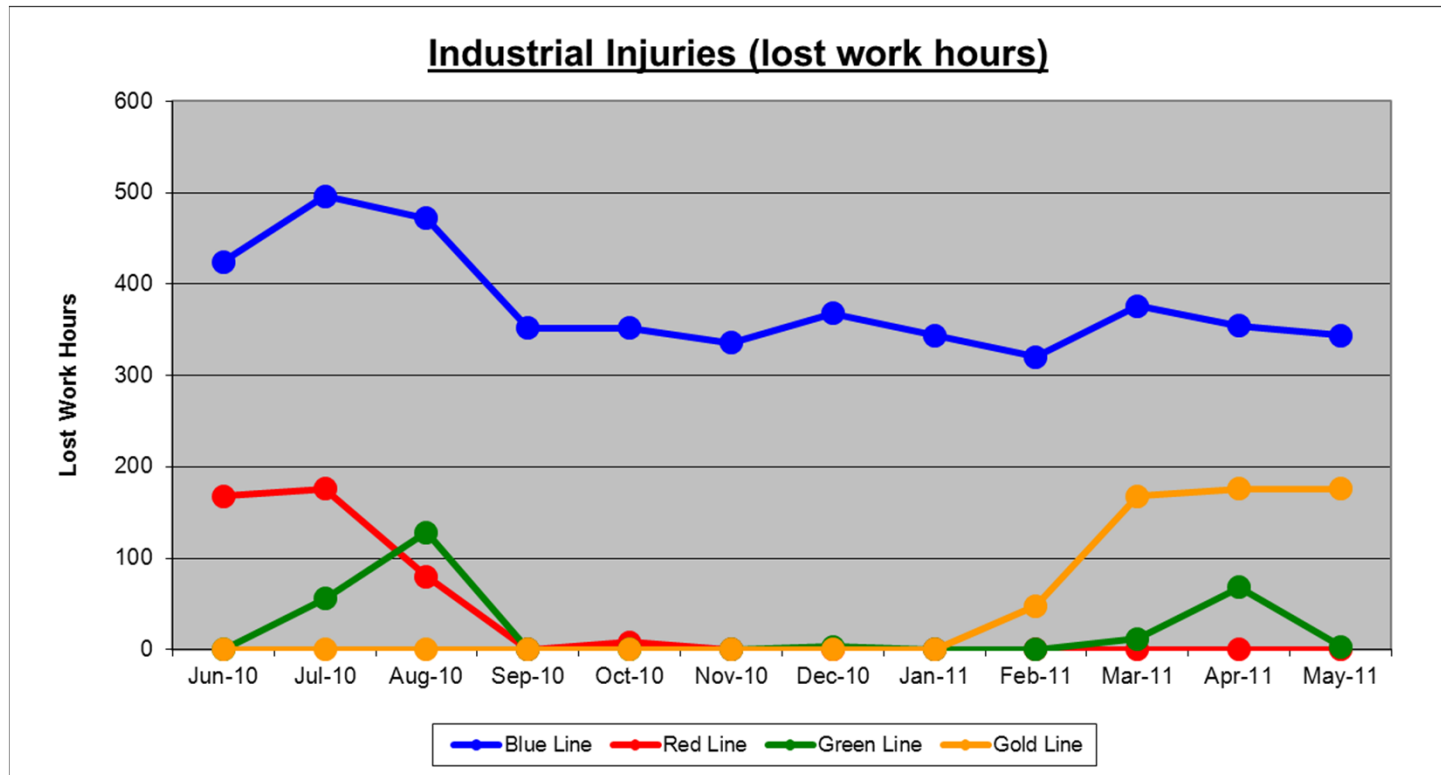


Metro

Table of Contents

• Safety	
– Industrial Injuries	Page 3
– Rail Vehicle Accidents & Major Incidents	Page 4
• Customer Service	
– Service Delivery – AM/PM Pull-Outs	Page 5
– Vehicle Utilization – Blue Line & Green Line	Page 6
– Vehicle Utilization – Red Line & Gold Line	Page 7
– Mean Miles Between Failures (Major)	Page 8
– Repeat Failures (Major)	Page 9
• Business Processes	
– Reported Incidents	Page 10
– Preventative Maintenance Compliance	Page 11
• Finance	
– Vandalism & Graffiti Costs	Page 12
– Graffiti Pictures	Page 13
– Material & Labor Costs	Page 14
– Cost per mile	Page 15
– Absence vs. Overtime	Page 16
• Engineering	
– Rail Vehicle Engineering Project Summary	Page 17
– P2550 Vehicle Acceptance Program	Page 18
• Quality Assurance	
– Warranty Program Projects Summary	Page 19
• Growth	
– Rail Fleet Services Training	Page 21

Industrial Injuries – Lost Work Hours May 2011



	Employees		May 2011 Lost Work Hours			
	Assigned	Active	Service Attendant	Maint. Specialist	Body Repairer /Painter	Total Hrs.
Blue Line	108	103	0	168	176	344
Red Line	102	97	0	0	0	0
Green Line	48	44	3	0	0	3
Gold Line	51	48	176	0	0	176
Eng/QA/Admin	25	25	0	0	0	0
Totals	334	317	179	168	176	523

Rail Vehicle Accidents & Major Incidents

May 2011

Repair Costs	Jun-10	Jul-10	Aug-10	Sep-10	Oct-10	Nov-10	Dec-10	Jan-11	Feb-11	Mar-11	Apr-11	May-11	Totals
Blue Line	\$2,050	\$36,498	\$50,124	\$916	\$4,781	\$10,716	\$16,938	\$961	\$2,114	\$684	\$26,990	\$4,844	\$157,616
Red Line	\$0	\$0	\$0	\$0	\$0	\$0	\$562	\$0	\$0	\$0	\$0	\$0	\$562
Green Line	\$0	\$0	\$0	\$0	\$0	\$0	\$0	\$0	\$0	\$0	\$0	\$0	\$0
Gold Line	\$0	\$653	\$0	\$441	\$4,286	\$3,016	\$1,374	\$239	\$13	\$4,031	\$0	\$0	\$14,053
Totals	\$2,050	\$37,151	\$50,124	\$1,357	\$9,067	\$13,732	\$18,874	\$1,200	\$2,127	\$4,715	\$26,990	\$4,844	\$172,231

Rail Vehicle Accident Costs - May 2011				
Metro Blue Main Line				
Date	Incident #	Problem code	Incident Description	Cost
5/2/2011	2011422	Train vs Auto at Intersection	Hit & Run 10-73 westbound at Washington & Main, Train 2, Operator T-236, LRVs (153A)-119-156, Track 1.	\$189.00
5/13/2011	2015373	Train vs Auto	10-73 Northbound at Pacific & 7th, Operator T-265, Train 4, LRVs (112B)-142-120, Track 1	\$3,920.00
5/27/2011	2019705	Train vs Ped	Train vs Pedestrian at Artesia Pedestrian crossing, Operator T-262, Train 9, LRVs (113A) 127-165, Southbound on Track 2	\$735.00
			TOTAL FOR METRO BLUE LINE	\$4,844.00
			GRAND TOTAL	4,844.00
(10-71) = Train vs. Object, (10-72) = Train vs. Pedestrian, (10-73) = Train vs. Vehicle (10-74) = Train vs. MTA Vehicle, (10-75) = Derailment				

Service Delivery May 2011

Blue Line – Fleet Size 69 cars

<u>Pull Out</u>	<u>Vehicles Required</u>	<u>Average Available</u>	<u>% Up (Down)</u>
Weekday:	60	62	103%
Weekend:	36	39	108%

Late Pullouts: 0 *

Monthly Mileage: 422,226 miles

Expo Line – Fleet Size 21 cars

Red Line - Fleet Size 104 cars

<u>Pull Out</u>	<u>Vehicles Required</u>	<u>Average Available</u>	<u>% Up (Down)</u>
Weekday:	70	80	114%
Weekend:	48	67	140%

Late Pullouts: 0 *

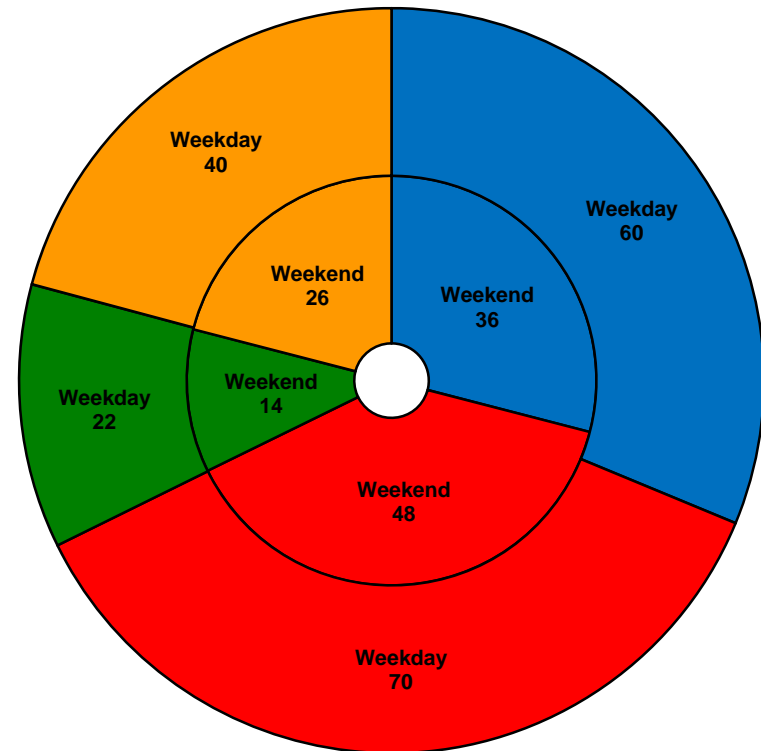
Monthly Mileage: 547,762 miles

Green Line – Fleet Size 29 cars

<u>Pull Out</u>	<u>Vehicles Required</u>	<u>Average Available</u>	<u>% Up (Down)</u>
Weekday:	22	25	114%
Weekend:	14	23	164%

Late Pullouts: 0 *

Monthly Mileage: 217,644 miles



■ Blue Line ■ Red Line ■ Green Line ■ Gold Line

Gold Line – Fleet Size 50 cars

P2550 – Fleet Size 44 cars

P2000 – Fleet Size 6 cars

<u>Pull Out</u>	<u>Vehicles Required</u>	<u>Average Available</u>	<u>% Up (Down)</u>
Weekday:	40	42	105%
Weekend:	26	42	162%

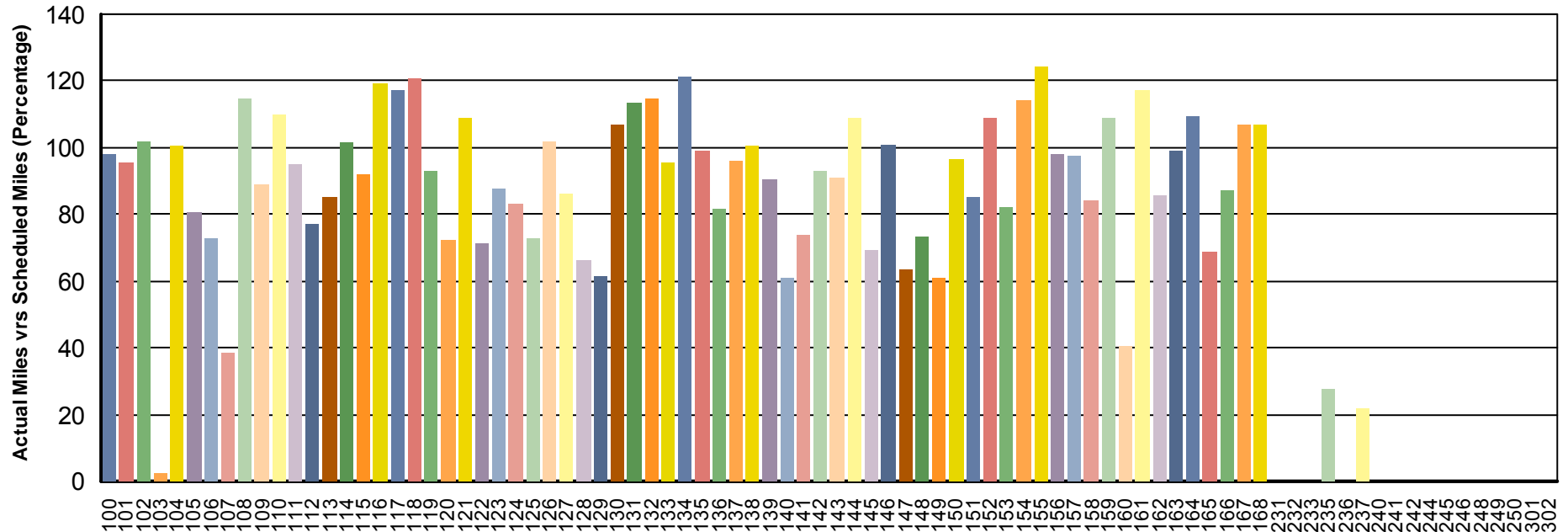
Late Pullouts: 0 *

Monthly Mileage: 274,817 miles

* Due to a vehicle related problem

Vehicle Utilization May 2011

Metro Blue/Expo Line Fleet

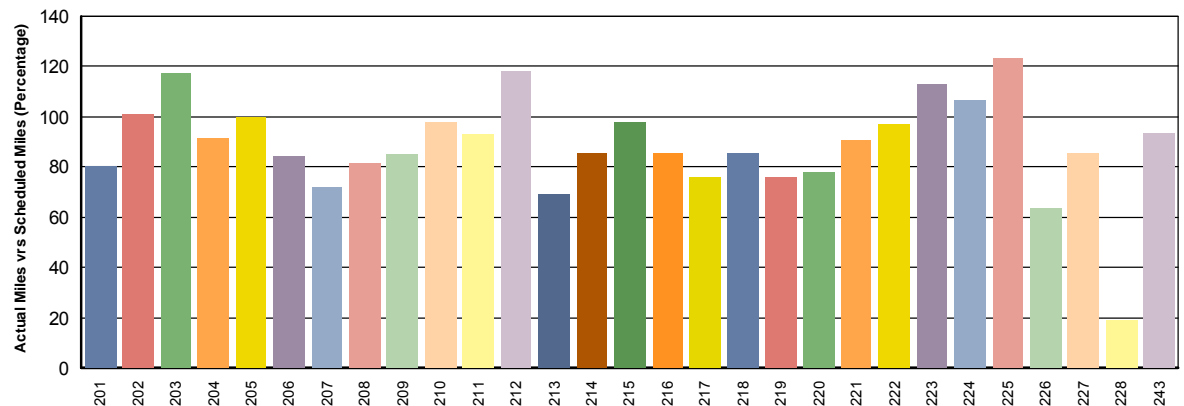


Blue Line car 103 is out of service for Journal Bearings.

The entire Expo Fleet (all 15 cars, 231-302) are not in revenue service at this time, but may be listed due to training and testing. Mileage will be minimal each month until the Expo Line opens.

Note: Percentage includes an average 4% mileage deduction for Yard mileage and Vehicle Testing.

Metro Green Line

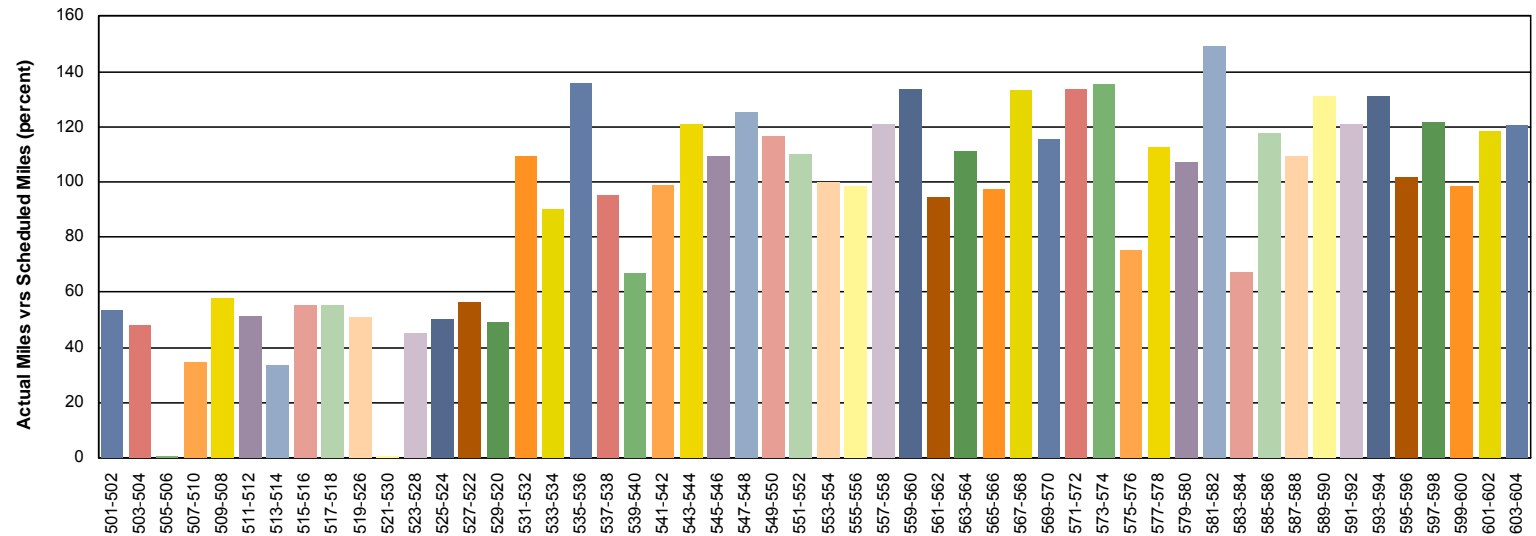


Vehicle Utilization May 2011

Red Line – Vehicles 505/506 and 521/530 are flagged as low vehicle utilization due to Base-Buy fleet having propulsion and brake problems.

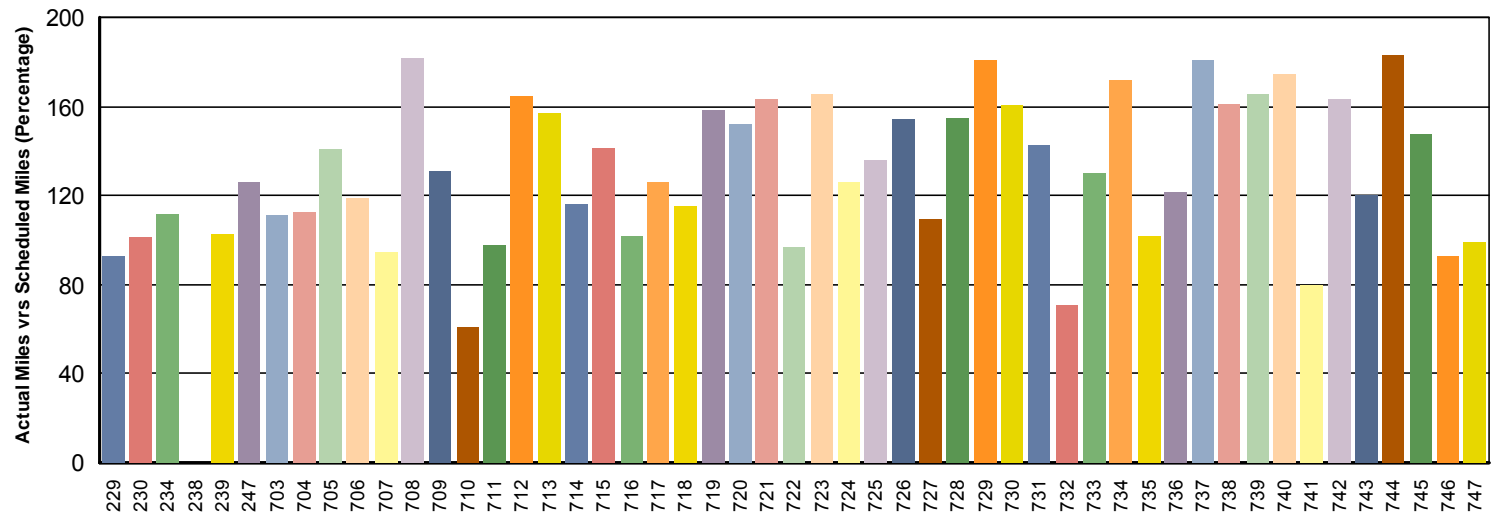
Percentage includes an average 4% mileage deduction for Yard mileage and Vehicle Testing.

Metro Red Line



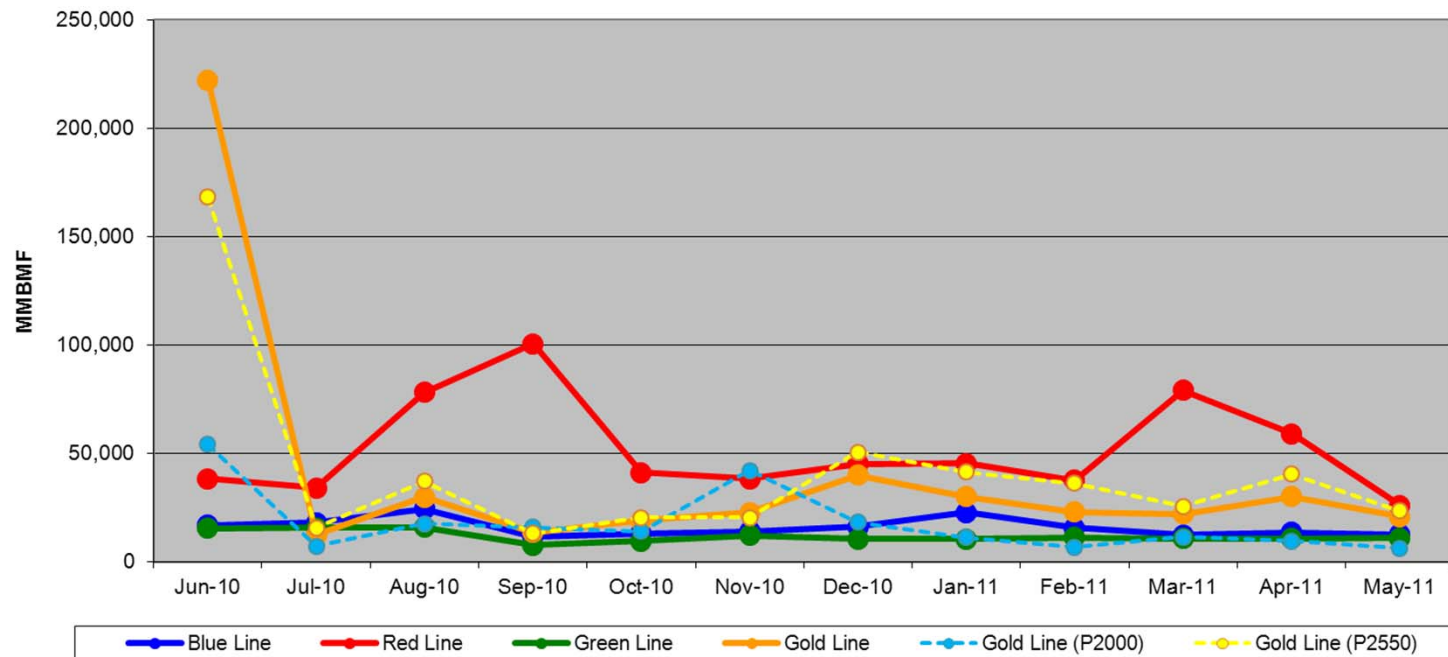
Metro Gold Line

Gold Line – P2000 cars (2xx) are in the process of being moved to the Blue Line for use on the new Expo Line



Mean Miles Between Failures (Major) May 2011

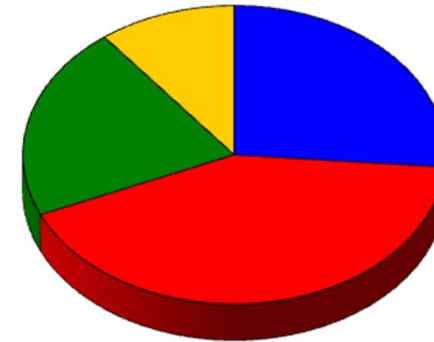
Mean Miles Between Major Failures (11-months)



	Jun-10	Jul-10	Aug-10	Sep-10	Oct-10	Nov-10	Dec-10	Jan-11	Feb-11	Mar-11	Apr-11	May-11
Blue Line	16,989	17,939	24,460	11,679	13,065	13,936	16,095	22,749	15,601	12,500	13,483	12,557
Red Line	38,295	34,189	78,217	100,589	41,239	38,293	45,211	45,357	37,732	79,178	59,089	26,084
Green Line	15,541	15,762	15,884	7,693	9,527	12,173	10,575	10,535	11,163	10,687	10,787	10,882
Gold Line	222,262	12,397	29,731	13,670	18,887	22,664	39,858	30,095	23,095	22,044	30,145	20,776
Gold Line (P2000)	54,010	7,204	17,557	15,935	14,002	42,007	18,326	11,208	6,689	11,413	9,625	6,377
Gold Line (P2550)	168,252	15,702	37,036	13,147	20,515	20,515	50,625	41,426	36,220	25,588	40,404	23,394

Repeat Failures (Major) May 2011

Metro Blue Line: 5 Repeat Failures
Metro Red Line: 8 Repeat Failures
Metro Green Line: 4 Repeat Failures
Metro Gold Line: 2 Repeat Failures



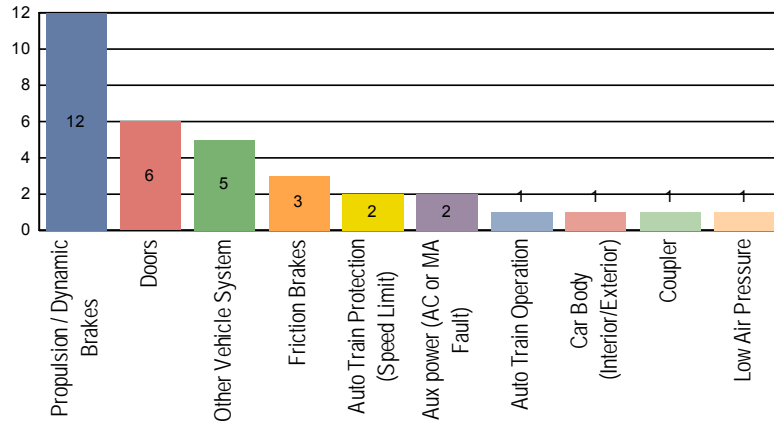
■ Blue Line
 ■ Red Line
 ■ Green Line
 ■ Gold Line

Repeater Car Details - May 2011								
System	Blue Line		Red Line		Green Line		Gold Line	
	Car #	Repeats	Car #	Repeats	Car #	Repeats	Car #	Repeats
Automatic Train Protection					211	2		
Speedometer	115	1						
Doors	108	1						
Friction Brakes			586	1				
			589	2				
HVAC	159	1	531	2				
Propulsion/Dynamic Brake	109	1	504	1	215	2	715	2
	129	1	528	2				
TOTALS	5		8		4		2	

Major Incidents May 2011

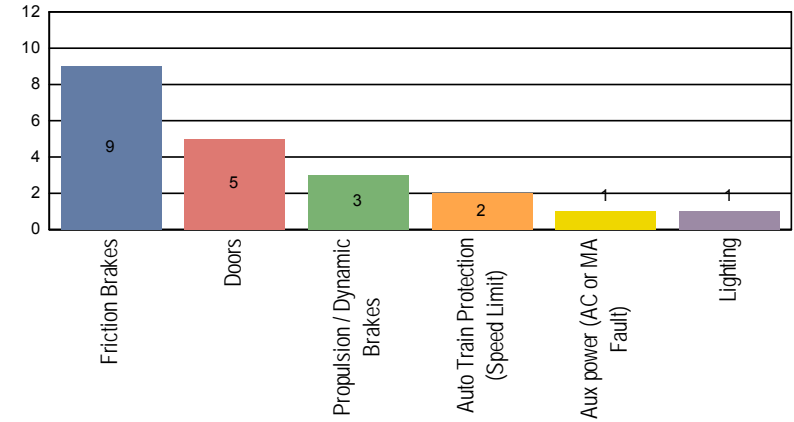
Metro Blue Line

Top Incident Categories



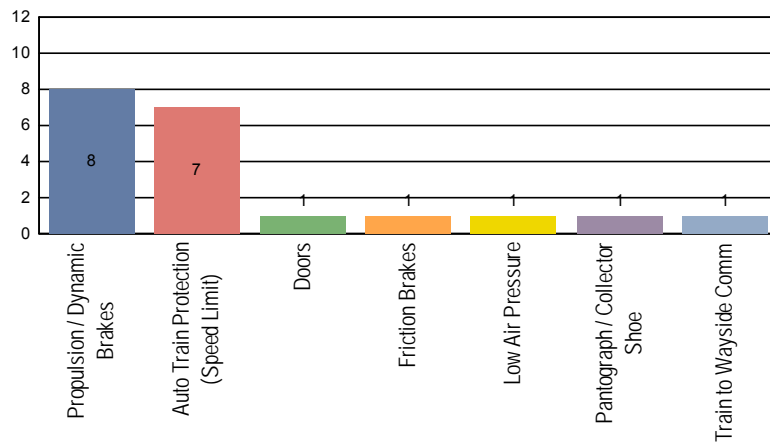
Metro Red Line

Top Incident Categories



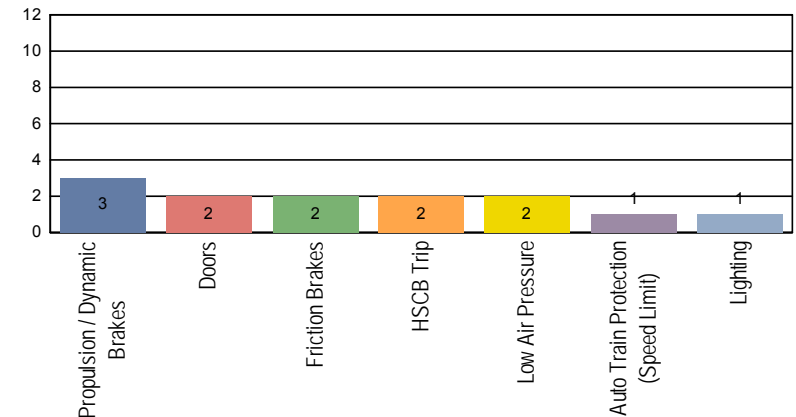
Metro Green Line

Top Incident Categories



Metro Gold Line

Top Incident Categories



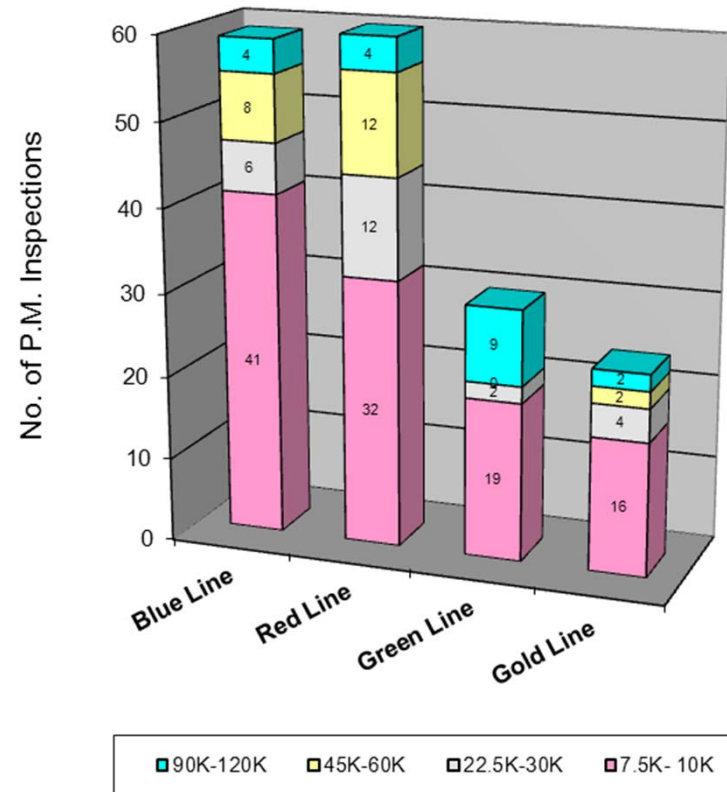
Preventative Maintenance Compliance

May 2011

PM Compliance	Jun-10	Jul-10	Aug-10	Sep-10	Oct-10	Nov-10	Dec-10	Jan-11	Feb-11	Mar-11	Apr-11	May-11
Blue Line	100%	100%	100%	100%	100%	100%	100%	100%	100%	100%	100%	100%
Red Line	100%	97%	100%	97%	91%	97%	100%	100%	97%	100%	100%	90%
Green Line	100%	100%	100%	100%	100%	100%	100%	100%	100%	100%	100%	100%
Gold Line	100%	100%	100%	100%	100%	100%	100%	100%	100%	100%	100%	100%

May 2011 Preventative Maintenance Inspections

No. of P.M. Inspections	7.5K-10K	22.5K-30K	45K-60K	90K-120K	Totals
Blue Line	41	6	8	4	59
Red Line	32	12	12	4	60
Green Line	19	2	0	9	30
Gold Line	16	4	2	2	24
Totals:	108	24	22	19	173



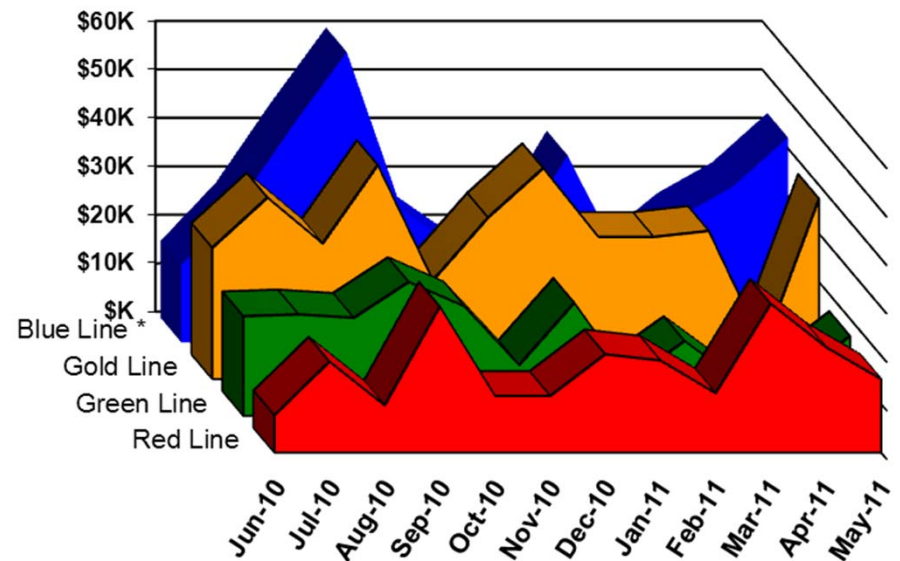
Vandalism & Graffiti Report

May 2011

	Jun-10	Jul-10	Aug-10	Sep-10	Oct-10	Nov-10	Dec-10	Jan-11	Feb-11	Mar-11	Apr-11	May-11	Year-to-Date
Blue Line *	\$16K	\$28K	\$44K	\$60K	\$27K	\$19K	\$20K	\$39K	\$16K	\$26K	\$32K	\$42K	\$370K
Red Line	\$8K	\$19K	\$10K	\$30K	\$12K	\$12K	\$20K	\$19K	\$12K	\$31K	\$22K	\$15K	\$209K
Green Line	\$21K	\$21K	\$20K	\$28K	\$23K	\$10K	\$23K	\$7K	\$15K	\$7K	\$8K	\$16K	\$200K
Gold Line	\$27K	\$37K	\$28K	\$44K	\$20K	\$33K	\$44K	\$29K	\$29K	\$31K	\$7K	\$37K	\$367K
Totals:	\$71K	\$105K	\$102K	\$162K	\$82K	\$75K	\$107K	\$94K	\$73K	\$94K	\$68K	\$111K	\$1,145K

May 2011 Vandalism & Graffiti - All Rail				
	Qty	Labor	Materials	Totals
Windows replaced	15	\$2,709	\$6,361	\$9,070
Vandal Shields	352	\$9,230	\$4,202	\$13,432
Seats Cleaned	1,003	\$2,697	\$0	\$2,697
Seats Replaced	219	\$6,899	\$8,967	\$15,866
Graffiti removal - other	931	\$34,352	\$5,283	\$39,635
Repainting panels	2	\$29,217	\$1,200	\$30,417
Totals for May 2011	2,522	\$85,104	\$26,013	\$111,117

* Blue Line totals include vandalism & graffiti removal from the P2000 cars that will soon be used on the Expo Line.



Graffiti Pictures May 2011

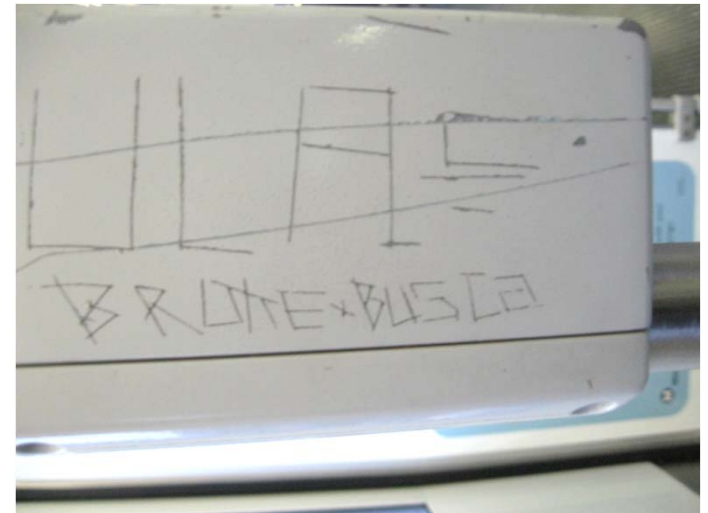
Blue Line



Green Line



Green Line

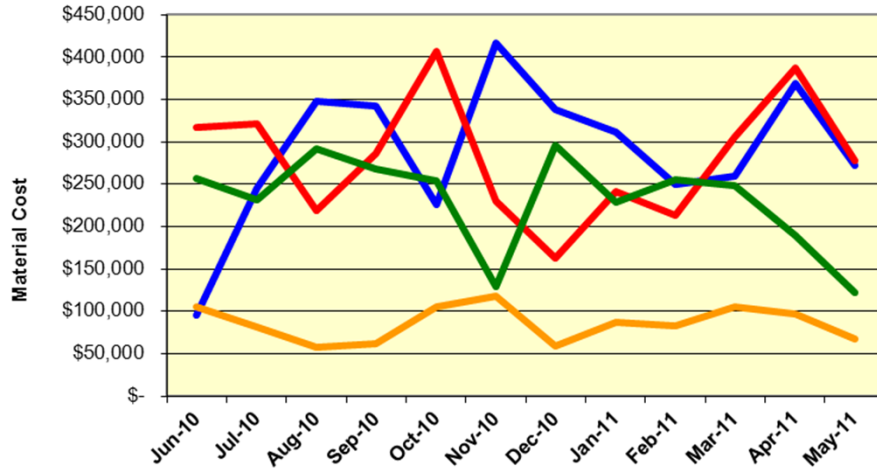


Material and Labor Costs

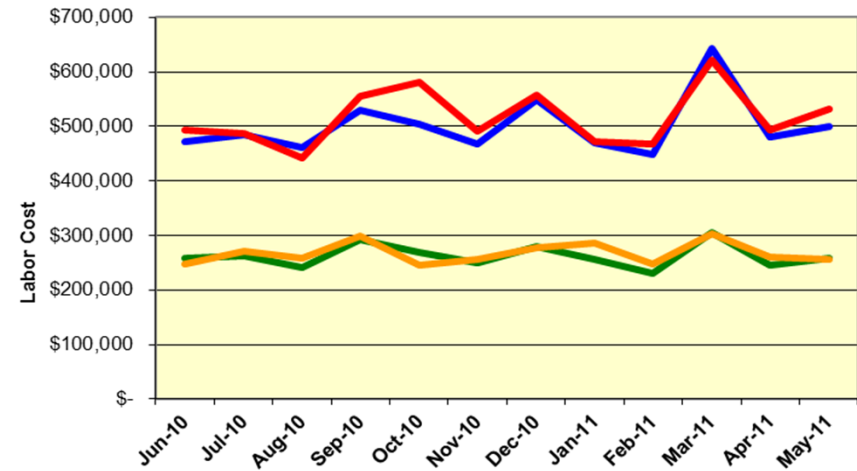
May 2011

MATERIALS	Jun-10	Jul-10	Aug-10	Sep-10	Oct-10	Nov-10	Dec-10	Jan-11	Feb-11	Mar-11	Apr-11	May-11
Blue Line	\$ 94,924	\$ 245,000	\$ 347,681	\$ 341,681	\$ 225,412	\$ 416,656	\$ 337,959	\$ 311,345	\$ 249,678	\$ 259,887	\$ 368,467	\$ 272,272
Red Line	\$ 317,139	\$ 321,375	\$ 219,030	\$ 285,906	\$ 406,465	\$ 230,298	\$ 162,960	\$ 240,990	\$ 213,323	\$ 305,345	\$ 386,455	\$ 277,113
Green Line	\$ 256,000	\$ 231,296	\$ 291,938	\$ 267,489	\$ 253,619	\$ 128,574	\$ 295,924	\$ 228,636	\$ 255,578	\$ 247,907	\$ 189,460	\$ 121,859
Gold Line	\$ 105,801	\$ 81,897	\$ 57,693	\$ 61,673	\$ 104,711	\$ 117,573	\$ 58,796	\$ 86,984	\$ 82,141	\$ 105,452	\$ 96,824	\$ 67,967
Totals	\$ 773,864	\$ 879,567	\$ 916,342	\$ 956,749	\$ 990,206	\$ 893,102	\$ 855,640	\$ 867,955	\$ 800,720	\$ 918,591	\$ 1,041,206	\$ 739,212

Material Costs



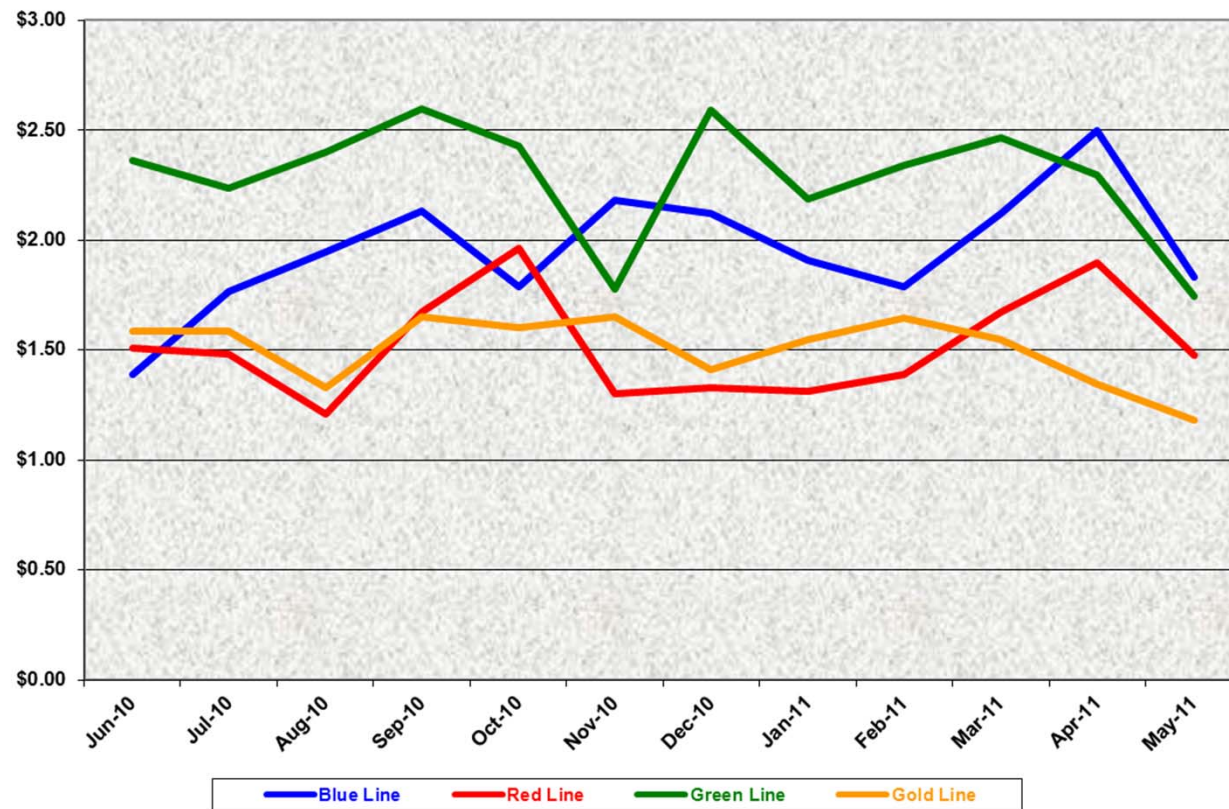
Labor Costs



LABOR	Jun-10	Jul-10	Aug-10	Sep-10	Oct-10	Nov-10	Dec-10	Jan-11	Feb-11	Mar-11	Apr-11	May-11
Blue Line	\$ 472,293	\$ 484,536	\$ 462,218	\$ 529,087	\$ 504,876	\$ 466,805	\$ 549,827	\$ 470,555	\$ 447,928	\$ 642,540	\$ 480,658	\$ 500,263
Red Line	\$ 492,936	\$ 487,742	\$ 442,482	\$ 555,982	\$ 581,709	\$ 491,124	\$ 556,636	\$ 472,105	\$ 467,849	\$ 622,201	\$ 493,104	\$ 531,171
Green Line	\$ 258,297	\$ 262,563	\$ 241,807	\$ 291,569	\$ 269,647	\$ 249,736	\$ 279,447	\$ 255,429	\$ 230,329	\$ 305,821	\$ 244,809	\$ 257,678
Gold Line	\$ 247,000	\$ 271,885	\$ 257,900	\$ 299,833	\$ 245,423	\$ 255,054	\$ 278,165	\$ 285,821	\$ 248,537	\$ 303,998	\$ 259,784	\$ 257,114
Totals	\$1,470,526	\$1,506,727	\$1,404,407	\$1,676,471	\$1,601,654	\$1,462,719	\$1,664,075	\$1,483,910	\$1,394,643	\$1,874,560	\$1,478,355	\$1,546,225

Cost Per Mile May 2011

Cost per mile:	Jun-10	Jul-10	Aug-10	Sep-10	Oct-10	Nov-10	Dec-10	Jan-11	Feb-11	Mar-11	Apr-11	May-11	Average
Blue Line	\$1.39	\$1.77	\$1.95	\$2.13	\$1.79	\$2.18	\$2.12	\$1.91	\$1.79	\$2.12	\$2.50	\$1.83	\$1.96
Red Line	\$1.51	\$1.48	\$1.21	\$1.67	\$1.96	\$1.30	\$1.33	\$1.31	\$1.39	\$1.67	\$1.90	\$1.48	\$1.52
Green Line	\$2.36	\$2.24	\$2.40	\$2.60	\$2.43	\$1.78	\$2.59	\$2.19	\$2.34	\$2.47	\$2.30	\$1.74	\$2.29
Gold Line	\$1.59	\$1.59	\$1.33	\$1.65	\$1.60	\$1.65	\$1.41	\$1.55	\$1.65	\$1.55	\$1.35	\$1.18	\$1.51



No facility costs are included

Absences vs. Overtime

May 2011

ABSENCE TYPE and HOURS	3940	3941	3942	3943	3944	Total
BER-BEREAVEMENT	0	0	0	0	16	16
CTO-COMPENSATORY TIME OFF	4	314	457	234	110	1,119
CVA - CASUAL VACATION	0	8	426	0	100	534
EFH-EMG. FLOAT HOL.	0	32	96	8	0	136
ETO-EXCUSED TIME OFF	0	41	23	-7	19	76
FML-FAMILY CARE LEAVE	0	80	185	140	152	557
HLF-HOLIDAY FLOATING	16	424	388	240	312	1,380
HNP-HOLIDAY NOT PAID	0	0	32	0	8	40
HOL-HOLIDAY LEGAL	80	520	496	144	112	1,352
II-INDUSTRIAL INJURY	0	344	0	3	0	347
JUR-JURY DUTY	0	11	64	0	0	75
LC1-LABOR CODE 233	48	284	238	96	80	746
LTI-OCCPIL/LONGTRM INJ LEAVE	0	0	0	0	176	176
MLN-MILITARY ABSENCE-UNPAID	0	0	168	8	0	176
OWP-OFF WITH PERMISSION	0	0	18	0	20	38
RTO-REQUESTED TIME OFF-NO PAY	0	18	0	0	0	18
SCK-SICK PAY	48	160	206	121	80	615
SCW-SICK WITHOUT PAY	0	56	152	36	16	260
SPN-SCHOOL PARTNER NOT PAID	0	4	8	0	0	12
VAC-VACATION	256	902	396	488	408	2,450
Total Absence Hours	452	3,197	3,353	1,511	1,609	10,121
Number of Work Force (assigned)	25	108	102	48	51	334
Full Work Force hours/month	4,333	18,716	17,677	8,318	8,838	57,882
Absence as a % of Work Force	10%	17%	19%	18%	18%	17%
OVERTIME TYPE and HOURS	3940	3941	3942	3943	3944	Total
CTB-COMPENSATORY TIME TO BANK	4	23	16	0	1	45
OTP-PREM OVERTIME	177	1777	1764	1232	907	5856
WLO-Worked Lunch Overtime	1	34	66	62	222	186
Total	181	1834	1846	1294	1129	6086
Overtime as a % of Work Force	4%	10%	10%	16%	13%	11%
UNCOVERED ABSENCES	3940	3941	3942	3943	3944	Total
Absences FTE	3	18	19	9	9	58
OTP FTE	1	11	11	7	7	35
FTE Difference	2	7	8	2	2	23

Rail Vehicle Engineering Project Summary

May 2011

Major Projects	
A650 Refurbishment Expo Readiness P865/P2000 Fleets P2000 Signal Package Conversion Protran Worker Protection Device P2000 Component Overhaul P2550 Vehicle Acceptance P3010 Vehicle Acquisition MBL Overhaul MRL Car Cleaning MRL Friction Brake Kit Overhaul	
Technical Specifications	
MBL, MGL, MRL, MGD (all fleets):	P2000 HVAC Suttrak Units Overhaul Systra Contract for Expo Fleet MBL Articulation Bellow P2000 Doors P2000 Wheel/Axle Gear Box Powered Axle Overhaul SOW MBL Vital Relay Calibration Auxiliary Power Inverter Traction Motor Overhaul P2000 Friction Brake Kit Overhaul MBL Static Inverter P2000 Friction Brake Disc CT
Active Test Bulletins	
MBL (P865/P2020):	Inspection interval investigation (5K-7.5K) Door Capacitor Replace GRS/TWC with H&K TWC Horn Journal Bearing Motor Alternator Transtechnik Inverter Hydraulic Damper Destination Curtain MBL Brake Pad qualification
MRL (A650 Base):	DC-AC Traction Motor Blower A21 Power Supply A16A1 Board Speed Sensor Removal Wheel - Bonatrans
MRL (A650 Option):	Emergency door seal Air Spring Brushes Motor Evaporator Speed Sensor Removal Traction Motor Safety Hanger Shock Absorber Tie Rod Pin Hand Rail Blower Motor Impeller
MGDL (P2000):	Luminator LED Destination Sign
MGL (P2000):	Door Operator Assembly Electric Cabinet Cooling Exterior Mirror
Active Modification Bulletins	
MBL (P865/P2020):	Watch Gap, Wheelchair, Security Cameras Gearbox Long Breather Tube Flashing Circuit Protran1
MBL (P2000):	Add TWC Route Select Feature No Acceleration during ATP Overspeed
MRL (A650 Option/Base):	Remove Trip Switch Wiring Manual Controller Modification by American Transit Front Door Latch Replace End Door Threshold Plate Dead Battery Start Buss Bar Isolation ATO Overspeed Brake Rate Bracket Power Cable Protection Coupler Shield
MGL (P2000):	Master Controller with New Cam Profiles Removal of Convex Mirror Head Protran 1 Wayside Worker Protection
MGDL (P2000):	Battery Disconnect Decals
Active Technical Request Form	
MBL (P865/P2020):	Destination Signs Journal Bearing Chopper Intake Damper Assembly Motor Alternator Set CB1 Tripping Problem 3-Way Valve Berthing Bypass Brake Disc Edges
MRL (A650 Option/Base):	ATO Berthing Flender Gearbox Gate Drive Power Supply Rectifier Door Latching Relay Thermistor & TLR Circuit Failures PA System & Air Whistle/Horn Faults Hand Assistance Strap Contact Adhesive Flooring Blower Motor Impeller Snubber Capacitor Vital Relays Calibration Berthing Bypass Step Ladder
MGL (P2000):	Door Operator Assemble Repair Vendor Air Vent Grille Exterior Rear View Mirror Sun Shade Gear Latch EMI Trip Faults HVAC Motor Sunshade Gear Latch Vital Relays Calibration
MGDL (P2000/P2550):	Truck Trimming Investigation Operator Door Assembly Overhaul Driver Cab Window Glass Vital Relays Calibration Key Pad for CCH is Obsolete - Find Vendor ATP Cab Signal Verification at Union Station Interlocking Cow Catcher



P2550 Vehicle Acceptance Program

May 2011

Vehicle Status Update:

- 46 cars at Metro
- A total of 45 Cars Conditionally Accepted (CA)
- 3 Cars at Pittsburg Assembly Plant
- 1 Car in transit)

Engineering Activities Update:

- Event recorder – AB's supplier, Faiveley, dispatched engineer to L.A. week of May 18th to investigate remaining issues. Faiveley anticipates new software release by June 15th that addresses MVB issues. In parallel, AB will correct issues with signal feedback to the Event Recorder.
- Traction Motor HV Junction Box – 10 car sets completed/ installed, remaining parts due to arrive in LA by June 2011.
- Brake Caliper Overhaul – 16 cars sets completed.
- Reliability Program – AB continues to review work order data, recent incidents include TCU, Doors and Controls, Communications, and Propulsion equipment. The program is on-going.
- ATP System – TWC software release 1.3 and interim ATP software release are awaiting release for implementation. ASTS continues evaluating problems with multifunction PCB, Decelerometer and PCMCIA reported errors. Work is ongoing.

Production Car Status – Pittsburg:

- Car 749. In transit, scheduled to arrive in Los Angeles on June 1st, 2011
- Car 750 – 90% complete. Assembly in process; scheduled to ship to L.A at end of June 2011.
- Cars 701& 702 - Re-configuration of car in process, rewiring and repining of cables 100 % complete; scheduled to ship to L.A. by November 2011.

Project Management:

- Car 732 was Conditionally Accepted and three cars (741, 742 & 743) were Final Accepted in May 2011.
- Contract spares are in process and delivered to Metro. Estimated at 85% complete, critical parts not yet delivered.
- Daily and weekly meetings are scheduled with AB Project Management to solve revenue service issues.

QA-Warranty Program Projects Summary

May 2011

ADMINISTRATION ACTIVITIES

- RFP-3010 Technical Advisor Warranty, QA, Testing, Materials & Workmanship Sections – ongoing
- Warranty Manual rewrite (2nd edition) - 60% complete
- QA Manual rewrite (2nd edition) - 80% complete
- QA LRV and HRV Wheel Ultrasonic Test-Inspection Pilot Program in place; new wheel testing to commence in June
- Management Audit Services #11-OPS-007 (3/09-5/18/11) Maintenance Performance Audit of Rail Cars – cancelled per upper management instructions
- QA PMI & Work Order (WO) audits conducted MGL 45K & MRL 90K; WO spot check repairs also being done. Numbers of PMI audits completed in 2011: (3) MGL, (3) MRL, (2) MBL & (1) MGD
- OIG initial May 2010 audit / investigation of Rail Car PMI's remains ongoing
- ERS daily admin support & M3 data entry ongoing at all divisions; all reports and records archived into QA-Warranty's Share Drive

MRL ACTIVITIES

- Warranty Traction Motor Mount & Truck Frame modification campaign underway, (11) Trucks modified thus far
- QA tech support provided to Engineering, with AC-DC compatibility testing
- QA support provided to Maintenance, fleet door inspection & repair of PSS switches & wiring terminals
- First Article Inspections (FAI) performed on Holec Line Breakers & Pamco gearbox assembly
- QA fit, form & function testing performed on GE Boards, Wabtec Motors & Ground Brush Housings
- Prepared Tech Reports, Power-Point-Presentations & FAI reports
- Warranty returns, R&R parts & MTA labor savings being documented to account for Cost Avoidance savings

MBL ACTIVITIES

- QA support Expo Line TWC Project, line testing on propulsion system during off-peak hours
- QA support provided to Maintenance, investigation & operation issues with Door Systems, Lighting Systems, Gearboxes & journal Bearings
- FAI inspections performed on Electronic Quaker adjustments, Inverter testing, Truck vibration testing & new inverter software
- Prepared Tech Reports, Power-Point-Presentations & FAI reports filed in archive
- Warranty returns, R&R parts & MTA labor savings being documented to account for Cost Avoidance savings

QA-Warranty Program Projects Summary

May 2011

MGL ACTIVITIES

- QA support provided to Engineering on Technical Request investigations & troubleshooting of Master Controllers, Amber Lights, Door Operations, Journal Bearing, and Mounting Pins)
- QA support provided to Maintenance tech assist with Vital Relays, Gearboxes, T/M Coils inspections & CPU Boards
- QA oversight over Vendors & Contractors working on Wheel Press, Gearbox overhauls, Traction Motors & Brake systems
- FAI inspections & testing done on kit overhauls 95% complete, Master Controller 63% complete, Vital Relays 100% complete
- QA & Warranty support provided on the P2550 project both MBL & MGD
- Prepared Tech Reports, Power-Point-Presentations & FAI reports are filed in archive
- Warranty returns, R&R parts & MTA labor savings being documented to account for Cost Avoidance savings

MGDL ACTIVITIES

- P2550 Project, QA support downloading video incidents for management, law enforcement & administration investigations
- P2550 Contract Programs, car inspection write ups & car acceptance. Oversee equipment testing, spare parts & warranty conditions are met
- Travels made to ABI Pittsburgh plant to inspect & resolve open issues
- Vendor support on Contract Spares ongoing.
- Project documentation, contract deliverables & maintenance records up-to-date
- Support ABI & RFSTS Engineering with Car Acceptance test issues and reliability tracking
- Prepared Tech Reports, Power-Point-Presentations & FAI reports filed in archive
- Warranty returns, R&R parts & MTA labor savings being documented to account for Cost Avoidance savings

Rail Fleet Services Instruction

May 2011

Training classes completed during the month of May 2011

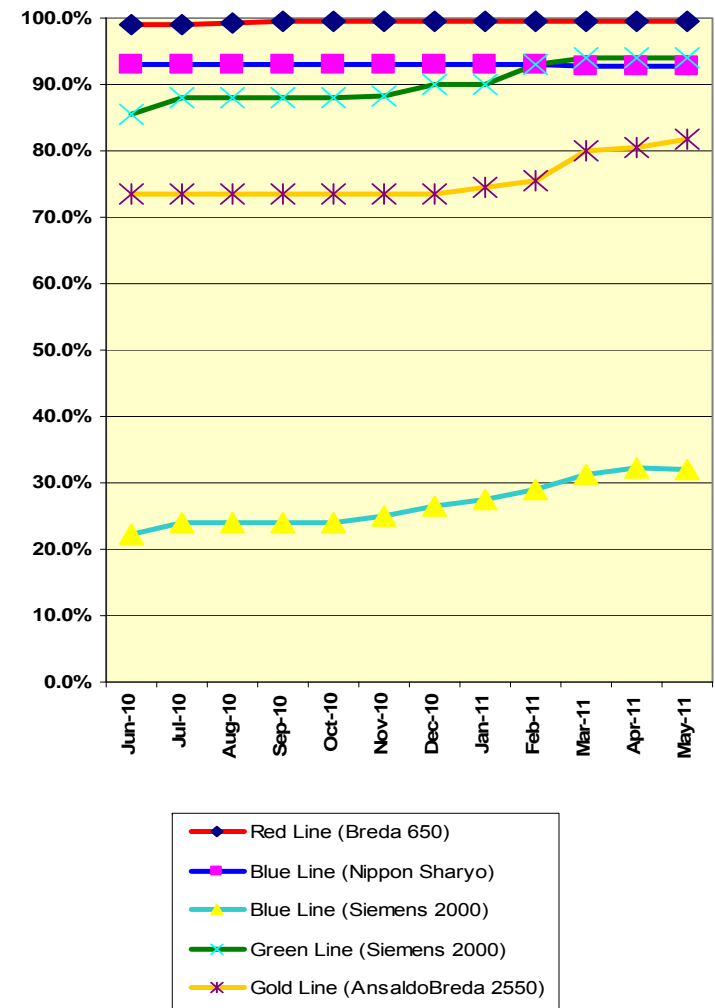
Description	Status	Start	End	Course Hours	Student Count	Training Hours
<u>Blue Line Training - (865/2020 & P2000 LRV):</u>						
METRO'S PUBLIC SPEAKING	Complete	5/10/2011	5/10/2011	2	2	4
RAIL SYSTEM SAFETY	Complete	5/10/2011	5/10/2011	3	1	3
RFS SIEMENS 2000 AUX. INVERTER	Complete	5/1/2011	5/13/2011	24	7	168
MANAGING LEAVES OF ABSENCE	Complete	5/10/2011	5/10/2011	3	2	6
P-CARD TRAINING FOR CARD HOLDERS & AOS	Complete	5/19/2011	5/19/2011	2	1	2
RFS SIEMENS 2000 PROPULSION	Not Complete	5/16/2011		16	7	112
Total Blue Line Training (Hours):						295
<u>Red Line Training (Breda A650 HRV):</u>						
EMS SOP: JAYNE PRODUCTS SCALE REMOVER (JP-S)	Complete	5/5/2011	5/16/2011	1	16	16
Total Red Line Training (Hours):						16
<u>Green Line Training (P2000 LRVs):</u>						
P-CARD TRAINING FOR CARD HOLDERS & AOS	Complete	5/19/2011	5/19/2011	2	1	2
Total Green Line Training (Hours):						2
<u>Gold Line Training (P2550 LRVs):</u>						
RFS ANSALDOBREDA 2550 TRUCKS	Complete	5/9/2011	5/11/2011	24	2	48
RFS ANSALDOBREDA 2550 CARBODY	Complete	5/5/2011	5/6/2011	16	2	32
RFS ANSALDOBREDA 2550 H.V.A.C.	Complete	5/2/2011	5/5/2011	16	2	32
Total Gold Line Training (Hours):						32
Total Rail Fleet Services Instruction for the month of May 2011 (Hours):						345.0

Core Vehicle Training Completed:

	<u>BLUE</u>	<u>RED</u>	<u>GREEN</u>	<u>GOLD</u>
Percentage of core vehicle training complete:	92.7%	99.5%	93.9%	81.7%
Siemens 2000 training complete:	32.1%	N/A	N/A	N/A

Average Specialist Rail Experience Level in Years: 11.5 11.5 8.5 9.7

Core Training Completed



Variations caused by new hires, employee transfers,
& training completed