



Rail Fleet Services Monthly Report November 2011

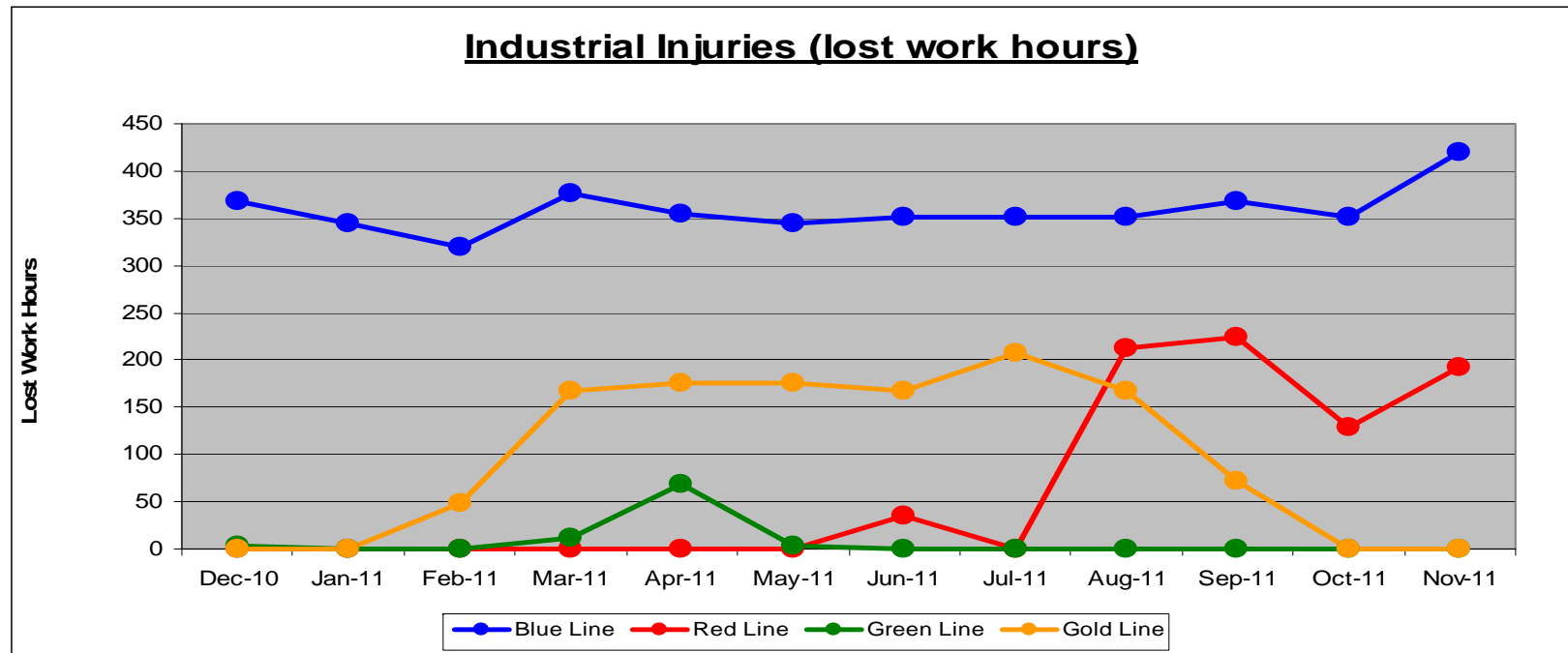


Metro

Table of Contents

•	Safety	
	- Industrial Injuries	Page 3
	- Rail Vehicle Accidents & Major Incidents	Page 4
•	Customer Service	
	- Service Delivery – AM/PM Pull-Outs	Page 5
	- Vehicle Utilization – Blue Line & Green Line	Page 6
	- Vehicle Utilization – Red Line & Gold Line	Page 7
	- Mean Miles Between Failures (Major)	Page 8
	- Repeat Failures	Page 9
•	Business Processes	
	- Major Incidents	Page 10
	- Preventive Maintenance Compliance	Page 11
•	Finance	
	- Vandalism & Graffiti Costs	Page 12
	- Graffiti Pictures	Page 13
	- Material & Labor Costs	Page 14
	- Cost per mile	Page 15
	- Absence vs. Overtime	Page 16
•	Engineering	
	- Rail Vehicle Engineering Project Summary	Page 17
	- P2550 Vehicle Acceptance Program	Page 18
•	Quality Assurance	
	- Warranty Program Projects Summary	Page 19
•	Growth	
	- RFS Instruction Department Activities	Page 20

Industrial Injuries – Lost Work Hours November 2011



	Employees		November 2011 Lost Work Hours			
	Assigned	Active	Service Attendant	Maint. Specialist	Body Repairer /Painter	Total Hrs.
Blue Line	111	105	92	168	160	420
Red Line	105	97	192	0	0	192
Green Line	49	46	0	0	0	0
Gold Line	52	51	0	0	0	0
Eng/QA/Admin	30	30	0	0	0	0
Totals	347	329	284	168	160	612

Rail Vehicle Accidents & Major Incidents

November 2011

Repair Costs	Dec-10	Jan-11	Feb-11	Mar-11	Apr-11	May-11	Jun-11	Jul-11	Aug-11	Sep-11	Oct-11	Nov-11	Totals
Blue Line	\$16,938	\$961	\$2,114	\$684	\$26,990	\$4,844	\$189	\$0	\$395	\$7,337	\$888	\$16,188	\$77,528
Red Line	\$562	\$0	\$0	\$0	\$0	\$0	\$0	\$0	\$0	\$0	\$0	\$0	\$562
Green Line	\$0	\$0	\$0	\$0	\$0	\$0	\$0	\$0	\$0	\$0	\$0	\$0	\$0
Gold Line	\$1,374	\$239	\$13	\$4,031	\$0	\$0	\$5,458	\$3,763	\$2,567	\$0	\$320	\$0	\$17,765
Totals	\$18,874	\$1,200	\$2,127	\$4,715	\$26,990	\$4,844	\$5,647	\$3,763	\$2,962	\$7,337	\$1,208	\$16,188	\$95,855

Rail Vehicle Accident Costs - November 2011				
Metro Blue Main Line				
Date	Incident #	Problem code	Incident Description	Cost
11/1/2011	2087095	Train vs. Object	10-71, Train #6 reported hitting a shopping car at El Segundo grade crossing.	\$1,265.00
11/10/2011	2093200	Train vs. Object	10-71, Train #18 reported hitting an object at 92nd Street.	\$139.00
11/11/2011	2093466	Train vs. Pedestrian	10-72, Train #3, on track 1, versus a pedestrian northbound at grade crossing, T-163.	\$1,492.00
11/12/2011	2093479	Derailment	10-75, R-094 reported an incident at 124th. The Brandt truck lifted the incident train (Car #164) and it fell off the blocks.	\$9,478.00
11/15/2011	2096265	Train vs. Pedestrian	10-72, Train #15, on track 1, hit a pedestrian at grade crossing northbound at 41st Street.	\$545.00
11/25/2011	2101877	Train vs. Vehicle	10-73, Train #6, on track 2, hit an auto southbound at the intersection of 18th & Flower Street.	\$2,419.00
11/26/2011	2102122	Train vs. Object	10-71, Train #8 hit an object northbound (Long Beach Transit Coach mirror) at intersection of 1st & Pacific Avenue.	\$0.00
11/29/2011	2104045	Train vs. Vehicle	10-73, Train #34, on track 1, versus an auto northbound at 119th Street.	\$850.00
TOTAL				\$16,188.00
Metro Green Main Line				
Date	Incident #	Problem code	Incident Description	Cost
11/11/2011	2093379	Train vs. Pedestrian	10-72, Train #34, on track 1, versus a pedestrian westbound at Harbor Station.	\$0.00
TOTAL				0.00
GRAND TOTAL				\$16,188.00
(10-71) = Train vs. Object, (10-72) = Train vs. Pedestrian, (10-73) = Train vs. Vehicle (10-74) = Train vs. MTA Vehicle, (10-75) = Derailment				

Service Delivery November 2011

Blue Line – Fleet Size 69 cars

	<u>Vehicles Required</u>	<u>Average Available</u>	<u>% Up (Down)</u>
Pull Out			
Weekday:	60	61	101%
Weekend:	36	43	119%

Late Pullouts: 0 *

Monthly Mileage: 415,720 miles

Expo Line – Fleet Size 21 cars

Expo Revenue Operations Date (ROD) to be determined.

Red Line - Fleet Size 104 cars

	<u>Vehicles Required</u>	<u>Average Available</u>	<u>% Up (Down)</u>
Pull Out			
Weekday:	70	80	114%
Weekend:	48	64	134%

Late Pullouts: 0 *

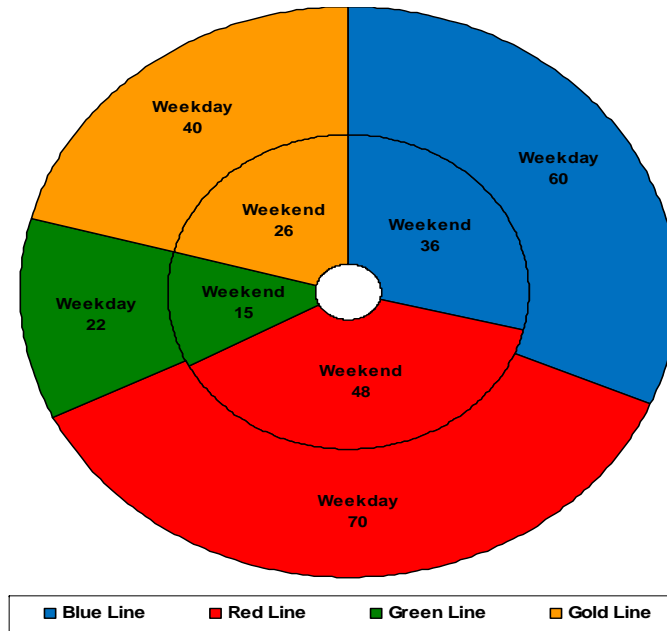
Monthly Mileage: 547,158 miles

Green Line – Fleet Size 29 cars

	<u>Vehicles Required</u>	<u>Average Available</u>	<u>% Up (Down)</u>
Pull Out			
Weekday:	22	24	110%
Weekend:	15	20	132%

Late Pullouts: 0 *

Monthly Mileage: 221,495 miles



Gold Line – Fleet Size 50 cars

P2550 – Fleet Size 48 cars

P2000 – Fleet Size 2 cars

	<u>Vehicles Required</u>	<u>Average Available</u>	<u>% Up (Down)</u>
Pull Out			
Weekday:	40	41	103%
Weekend:	26	37	142%

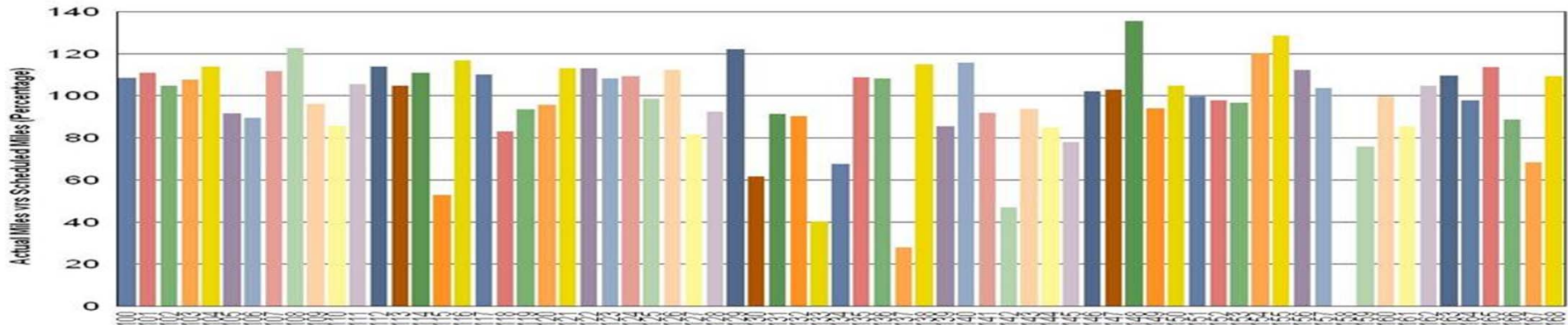
Late Pullouts: 0 *

Monthly Mileage: 268,083 miles

* Due to a vehicle related problem

Vehicle Utilization November 2011

Metro Blue/Expo Line Fleet



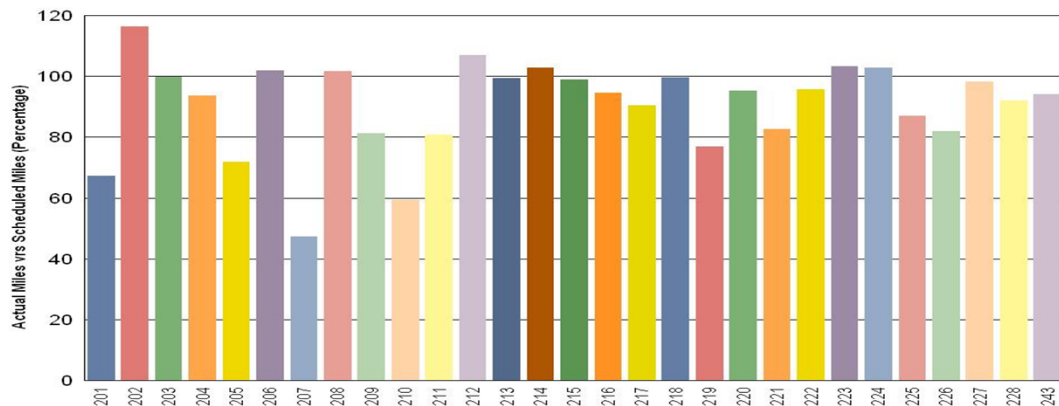
Blue Line:

- 137 Vehicle was out of service due to a brake overhaul and a 90k inspection.
- 158 Vehicle is out service on the Expo Line for TWC Acceptance Testing.

Metro Green Line

Green Line:

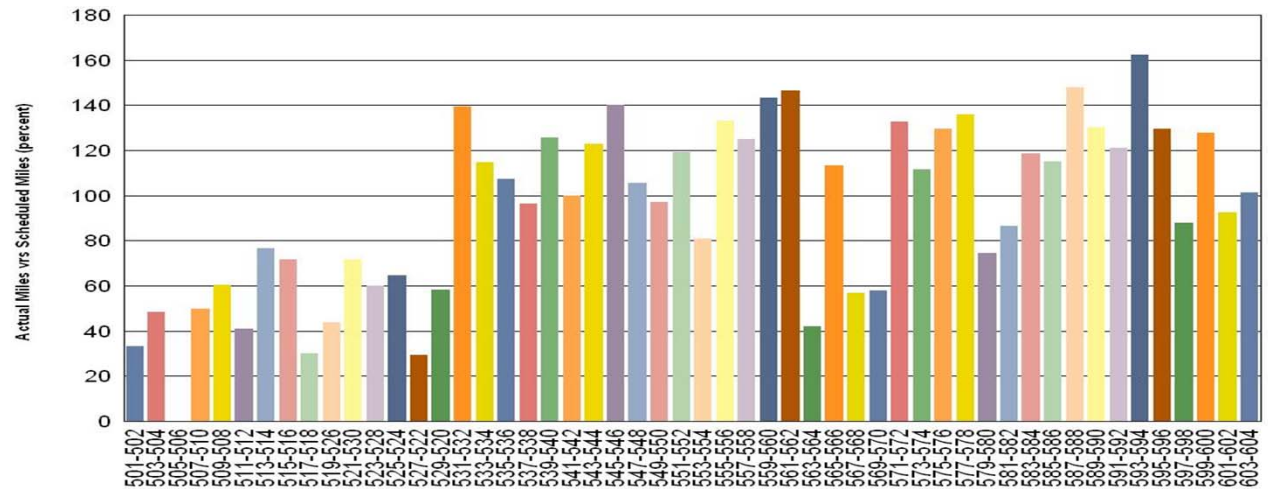
The fleet has met the daily maximum utilization requirements for the month of November.



Vehicle Utilization November 2011

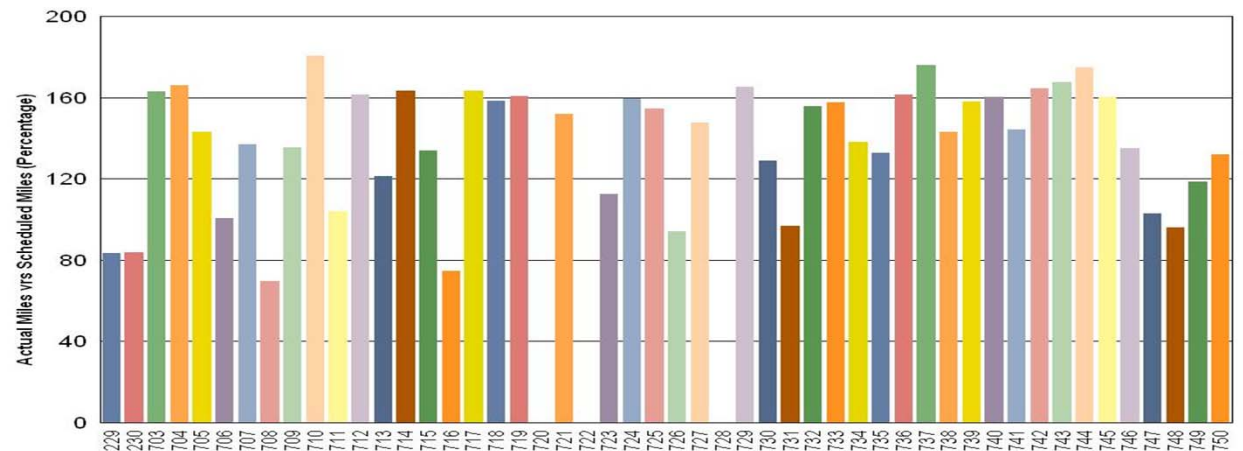
Red Line: Explanation for under-used vehicles:
501-502 Repeater for friction brakes. Car was used for new repeater close-out process.
505-506 This is due to a long-term rebuild program.
517-518 Held out of service due to slow down mileage for 45k pm and car has had several mainline failures.
527-522 This is due to propulsion faults.

Metro Red Line



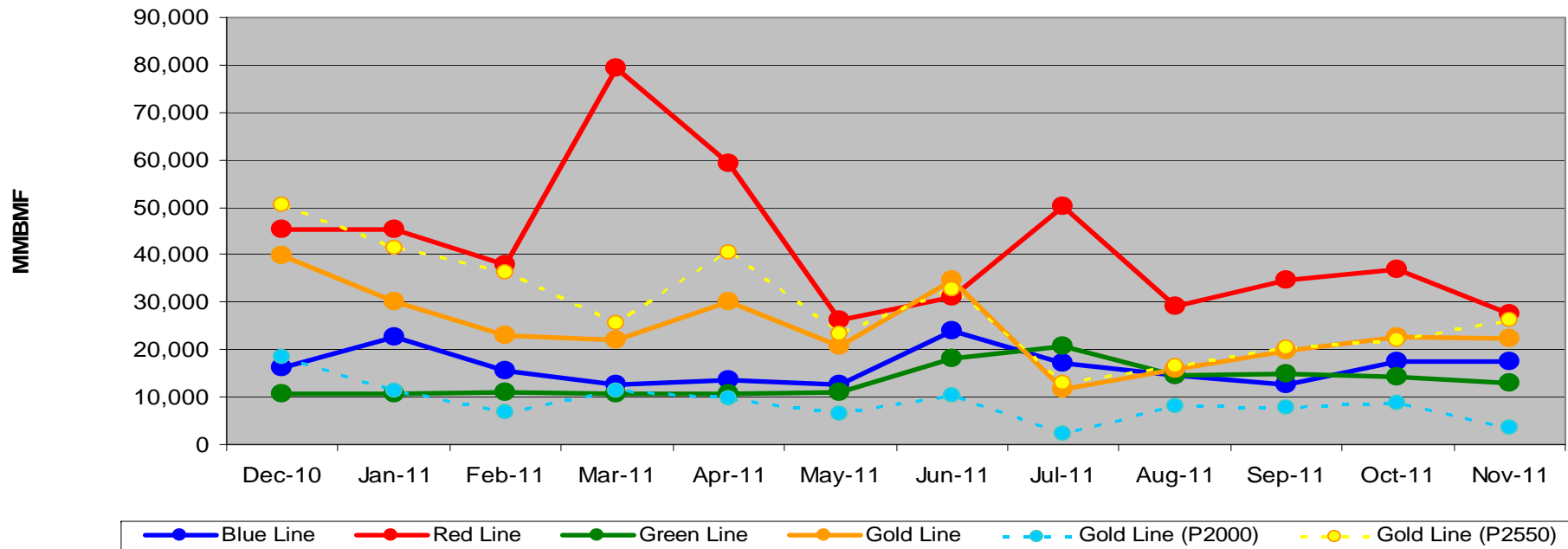
Gold Line:
720 Awaiting parts for repair.
722 ATP MF Board problem addressed by recent software release. Placed back in service on 12/2/2011.
728 Vehicle out of service due to yard derailment.

Metro Gold Line



Mean Miles Between Failures (Major) Year to Date

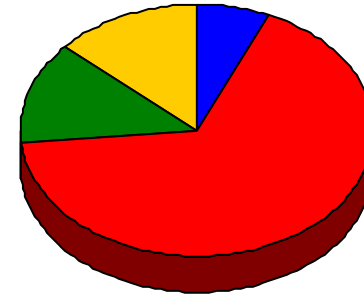
Mean Miles Between Major Failures (12 months)



	Dec-10	Jan-11	Feb-11	Mar-11	Apr-11	May-11	Jun-11	Jul-11	Aug-11	Sep-11	Oct-11	Nov-11
Blue Line	16,095	22,749	15,601	12,500	13,483	12,557	24,050	17,123	14,425	12,679	17,397	17,322
Red Line	45,211	45,357	37,732	79,178	59,089	26,084	30,932	50,099	29,298	34,535	36,745	27,358
Green Line	10,575	10,535	11,163	10,687	10,787	10,882	18,177	20,877	14,482	14,740	14,148	13,029
Gold Line	39,858	30,095	23,095	22,044	30,145	20,776	34,792	11,668	15,906	19,647	22,773	22,340
Gold Line (P2000)	18,326	11,208	6,689	11,413	9,625	6,377	10,351	2,153	8,019	7,872	8,887	3,509
Gold Line (P2550)	50,625	41,426	36,220	25,588	40,404	23,394	32,767	13,095	16,370	20,553	22,032	26,107

Repeat Failures November 2011

Metro Blue Line: 1 Repeat Failures
Metro Red Line: 10 Repeat Failures
Metro Green Line: 2 Repeat Failures
Metro Gold Line: 2 Repeat Failures



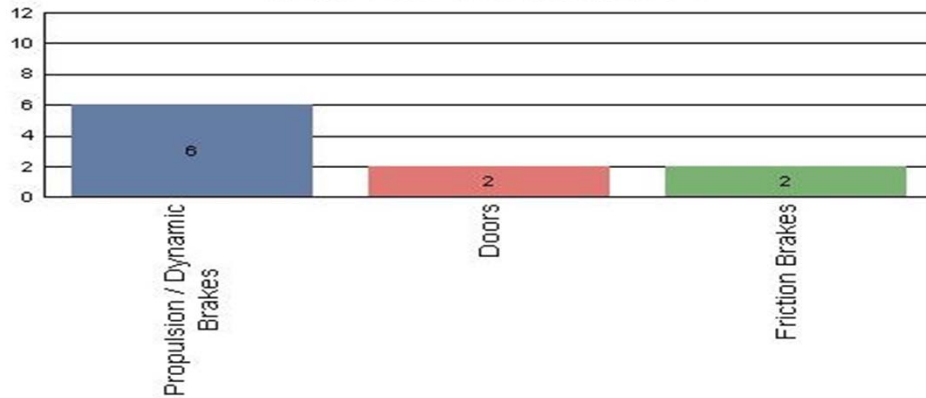
■ Blue Line
 ■ Red Line
 ■ Green Line
 ■ Gold Line

Repeater Car Details - November 2011								
System	Blue Line		Red Line		Green Line		Gold Line	
	Car #	Repeats	Car #	Repeats	Car #	Repeats	Car #	Repeats
ATP							716	1
Car Body							709	1
Friction Brakes			595	1	204	2		
Propulsion/Dynamic Brake	144	1	509	2				
			563	1				
			570	2				
			582	2				
			601	1				
			602	1				
TOTALS	1		10		2		2	

Major Incidents November 2011

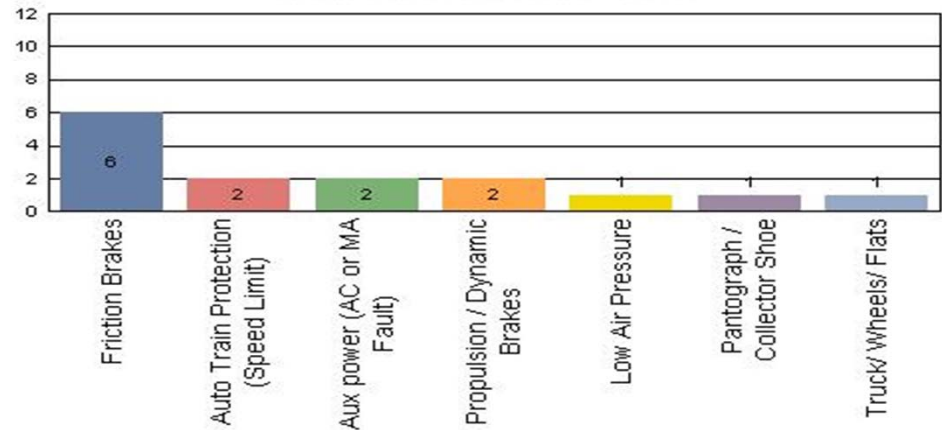
Metro Blue Line

Top Incident Categories



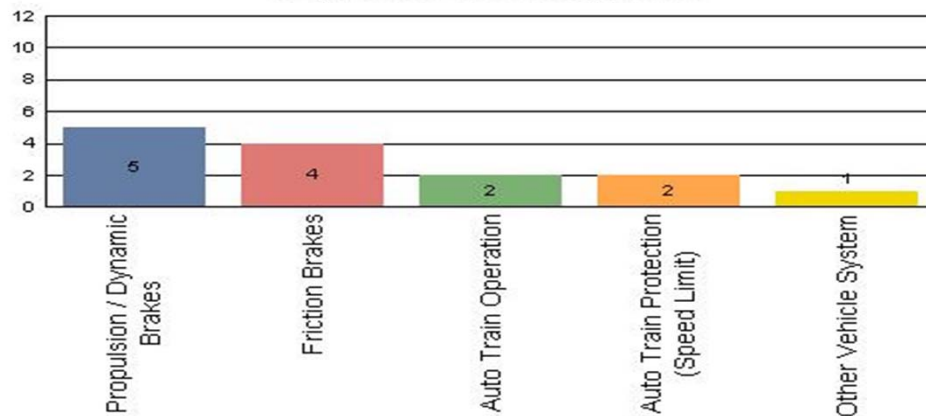
Metro Red Line

Top Incident Categories



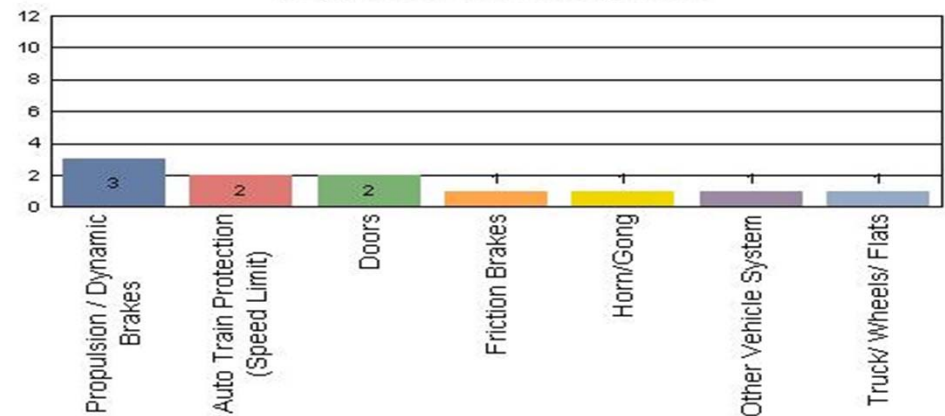
Metro Green Line

Top Incident Categories



Metro Gold Line

Top Incident Categories

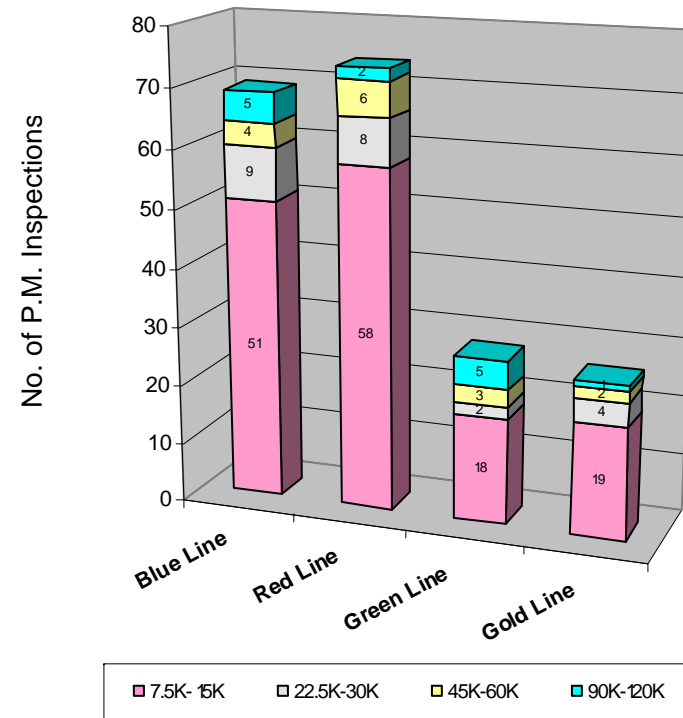


Preventive Maintenance Compliance November 2011

PM Compliance	Dec-10	Jan-11	Feb-11	Mar-11	Apr-11	May-11	Jun-11	Jul-11	Aug-11	Sep-11	Oct-11	Nov-11
Blue Line	100%	100%	100%	100%	100%	100%	100%	100%	100%	100%	100%	100%
Red Line	100%	100%	97%	100%	100%	90%	100%	100%	100%	100%	100%	100%
Green Line	100%	100%	100%	100%	100%	100%	100%	100%	100%	100%	100%	100%
Gold Line	100%	100%	100%	100%	100%	100%	100%	100%	100%	100%	100%	100%

November 2011 Preventive Maintenance Inspections

No. of P.M. Inspections	7.5K- 15K	22.5K- 30K	45K-60K	90K-120K	Totals
Blue Line	51	9	4	5	69
Red Line	58	8	6	2	74
Green Line	18	2	3	5	28
Gold Line	19	4	2	1	26
Totals:	146	23	15	13	197



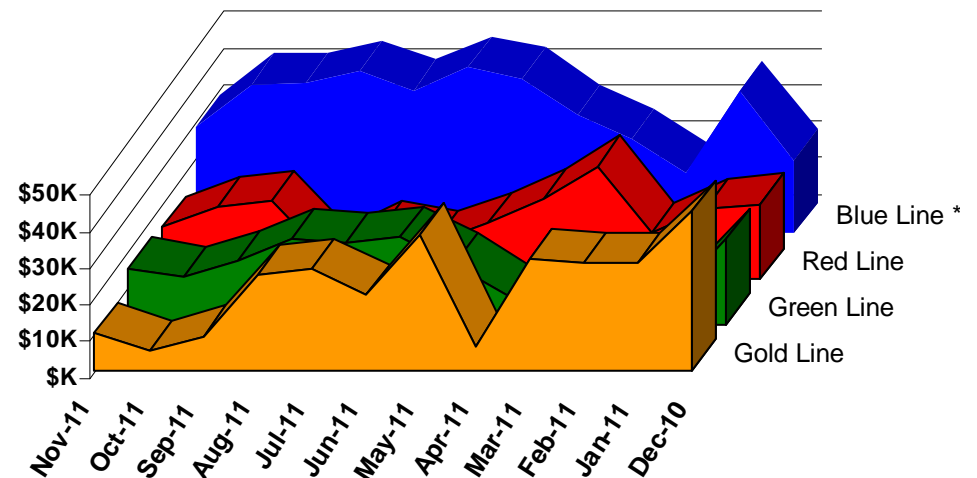
Vandalism & Graffiti Report

November 2011

	Dec-10	Jan-11	Feb-11	Mar-11	Apr-11	May-11	Jun-11	Jul-11	Aug-11	Sep-11	Oct-11	Nov-11	Year-to-Date
Blue Line *	\$20K	\$39K	\$16K	\$26K	\$32K	\$42K	\$45K	\$39K	\$44K	\$41K	\$41K	\$29K	\$414K
Red Line	\$20K	\$19K	\$12K	\$31K	\$22K	\$15K	\$10K	\$13K	\$6K	\$21K	\$20K	\$14K	\$203K
Green Line	\$23K	\$7K	\$15K	\$7K	\$8K	\$16K	\$24K	\$22K	\$23K	\$17K	\$13K	\$15K	\$193K
Gold Line	\$44K	\$29K	\$29K	\$31K	\$7K	\$37K	\$21K	\$28K	\$26K	\$9K	\$5K	\$10K	\$276K
Totals:	\$107K	\$94K	\$73K	\$94K	\$68K	\$111K	\$100K	\$102K	\$99K	\$89K	\$78K	\$69K	\$1,085K

November 2011 Vandalism & Graffiti - All Rail				
	Qty	Labor	Materials	Totals
Windows replaced	8	\$3,591	\$5,932	\$9,523
Vandal Shields	475	\$12,747	\$4,965	\$17,712
Seats Cleaned	1,048	\$2,941	\$0	\$2,941
Seats Replaced	124	\$3,871	\$3,780	\$7,651
Graffiti removal - other	872	\$15,513	\$450	\$15,963
Repainting panels	5	\$13,664	\$1,452	\$15,116
Totals	2,532	\$52,327	\$16,579	\$68,906

* Blue Line totals include vandalism & graffiti removal from the P2000 cars that will soon be used on the Expo Line.



Graffiti Pictures November 2011

Blue Line



Green Line



Gold Line

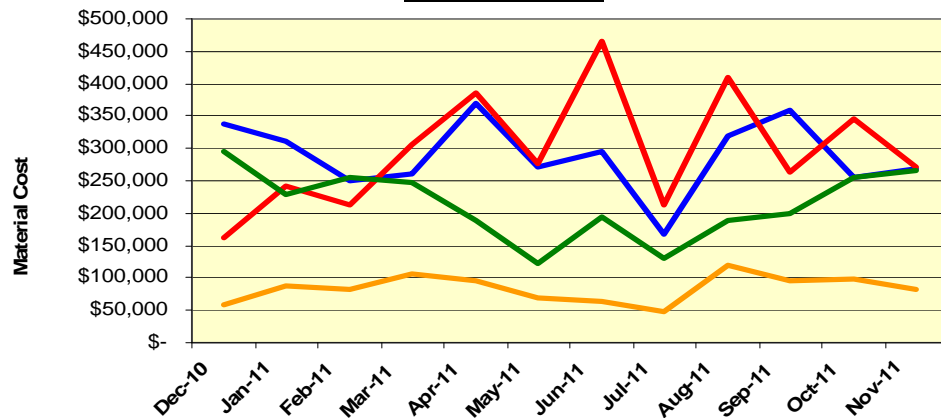


Material and Labor Costs

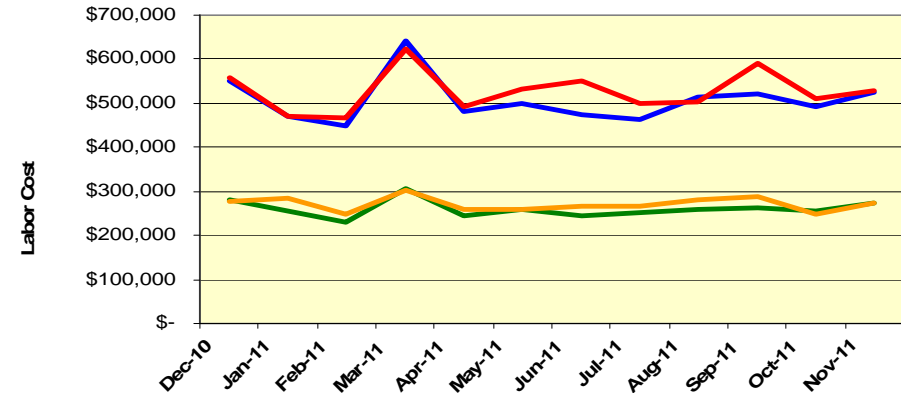
November 2011

MATERIALS	Dec-10	Jan-11	Feb-11	Mar-11	Apr-11	May-11	Jun-11	Jul-11	Aug-11	Sep-11	Oct-11	Nov-11
Blue Line	\$ 337,959	\$ 311,345	\$ 249,678	\$ 259,887	\$ 368,467	\$ 272,272	\$ 294,179	\$ 167,328	\$ 318,296	\$ 359,508	\$ 256,152	\$ 268,760
Red Line	\$ 162,960	\$ 240,990	\$ 213,323	\$ 305,345	\$ 386,455	\$ 277,113	\$ 466,346	\$ 212,074	\$ 410,299	\$ 263,808	\$ 344,563	\$ 272,291
Green Line	\$ 295,924	\$ 228,636	\$ 255,578	\$ 247,907	\$ 189,460	\$ 121,859	\$ 194,750	\$ 129,976	\$ 187,997	\$ 198,811	\$ 254,691	\$ 265,489
Gold Line	\$ 58,796	\$ 86,984	\$ 82,141	\$ 105,452	\$ 96,824	\$ 67,967	\$ 64,397	\$ 47,760	\$ 118,401	\$ 94,967	\$ 98,380	\$ 83,425
Totals	\$ 855,640	\$ 867,955	\$ 800,720	\$ 918,591	\$ 1,041,206	\$ 739,212	\$ 1,019,672	\$ 557,138	\$ 1,034,993	\$ 917,095	\$ 953,786	\$ 889,965

Material Costs



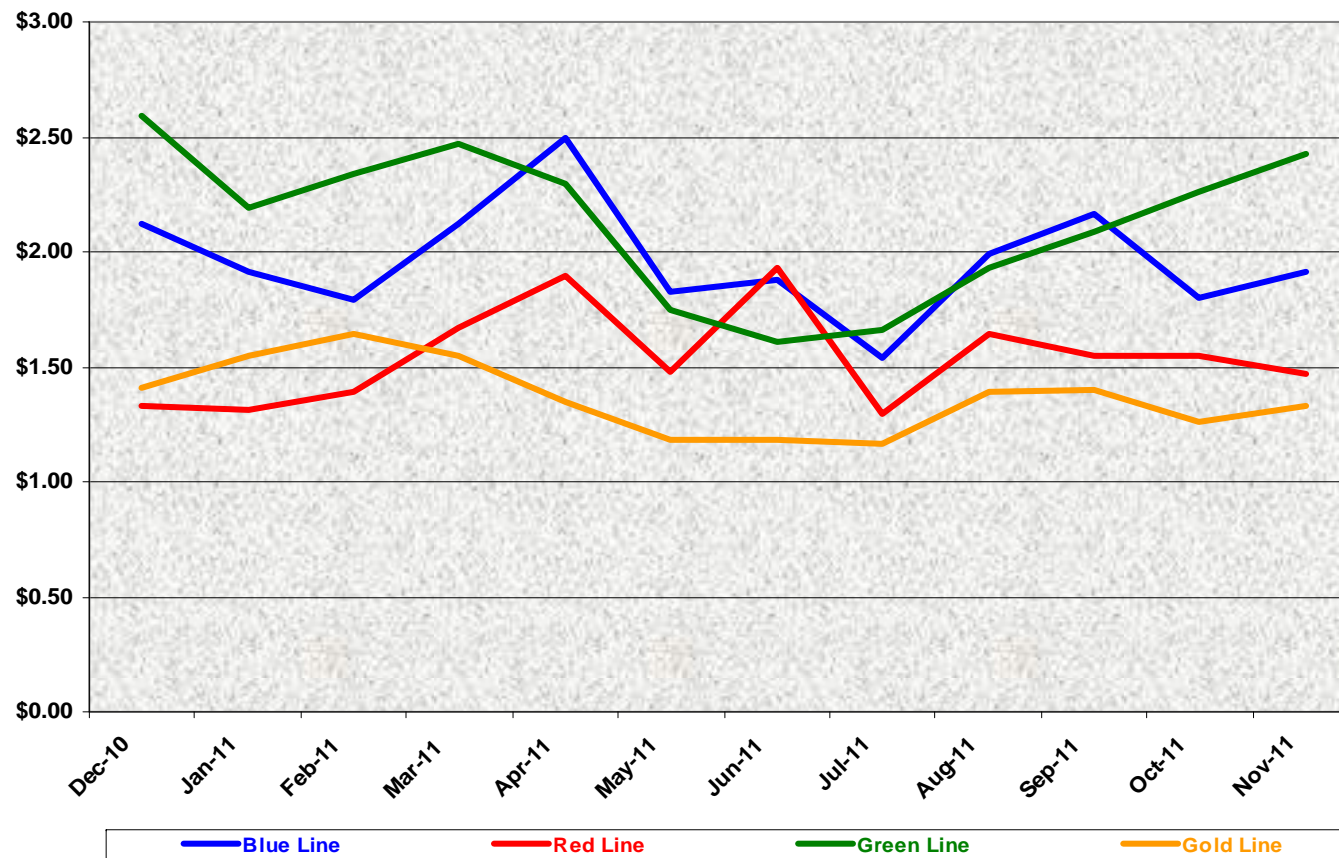
Labor Costs



LABOR	Dec-10	Jan-11	Feb-11	Mar-11	Apr-11	May-11	Jun-11	Jul-11	Aug-11	Sep-11	Oct-11	Nov-11
Blue Line	\$ 549,827	\$ 470,555	\$ 447,928	\$ 642,540	\$ 480,658	\$ 500,263	\$ 475,354	\$ 464,468	\$ 513,406	\$ 520,526	\$ 493,739	\$ 526,600
Red Line	\$ 556,636	\$ 472,105	\$ 467,849	\$ 622,201	\$ 493,104	\$ 531,171	\$ 550,464	\$ 500,504	\$ 504,785	\$ 589,986	\$ 510,944	\$ 530,408
Green Line	\$ 279,447	\$ 255,429	\$ 230,329	\$ 305,821	\$ 244,809	\$ 257,678	\$ 243,969	\$ 250,617	\$ 259,629	\$ 261,796	\$ 256,610	\$ 272,603
Gold Line	\$ 278,165	\$ 285,821	\$ 248,537	\$ 303,998	\$ 259,784	\$ 257,114	\$ 264,854	\$ 265,256	\$ 280,715	\$ 289,048	\$ 246,890	\$ 274,017
Totals	\$ 1,664,075	\$ 1,483,910	\$ 1,394,643	\$ 1,874,560	\$ 1,478,355	\$ 1,546,225	\$ 1,534,641	\$ 1,480,845	\$ 1,558,535	\$ 1,661,357	\$ 1,508,183	\$ 1,603,628

Cost Per Mile November 2011

Cost per mile:	Dec-10	Jan-11	Feb-11	Mar-11	Apr-11	May-11	Jun-11	Jul-11	Aug-11	Sep-11	Oct-11	Nov-11	Average
Blue Line	\$2.12	\$1.91	\$1.79	\$2.12	\$2.50	\$1.83	\$1.88	\$1.54	\$1.99	\$2.17	\$1.80	\$1.91	\$1.96
Red Line	\$1.33	\$1.31	\$1.39	\$1.67	\$1.90	\$1.48	\$1.93	\$1.29	\$1.64	\$1.55	\$1.55	\$1.47	\$1.54
Green Line	\$2.59	\$2.19	\$2.34	\$2.47	\$2.30	\$1.74	\$1.61	\$1.66	\$1.93	\$2.08	\$2.26	\$2.43	\$2.13
Gold Line	\$1.41	\$1.55	\$1.65	\$1.55	\$1.35	\$1.18	\$1.18	\$1.17	\$1.39	\$1.40	\$1.26	\$1.33	\$1.37



No facility costs are included

Absences vs. Overtime

November 2011

ABSENCE TYPE and HOURS	3940	3941	3942	3943	3944	Total
AWP-ABSENT W/O PERMISSION	0.00	0.00	0.00	0.00	8.00	8.00
BER-BEREAVEMENT	0.00	88.00	32.00	72.00	0.00	192.00
CTO-COMPENSATORY TIME OFF	0.00	196.00	213.00	138.00	180.00	727.00
CVA - CASUAL VACATION	32.00	0.00	596.00	159.00	244.00	1,031.00
EFH-EMG. FLOAT HOL.	0.00	0.00	136.00	16.00	8.00	160.00
ETO-EXCUSED TIME OFF	0.50	54.50	15.15	11.91	22.50	104.56
FML-FAMILY CARE LEAVE	0.00	248.00	408.00	103.52	312.00	1,071.52
HLF-HOLIDAY FLOATING	24.00	224.00	312.00	144.00	124.00	828.00
HNP-HOLIDAY NOT PAID	0.00	8.00	0.00	0.00	0.00	8.00
HOL-HOLIDAY LEGAL	96.00	528.00	464.00	120.00	128.00	1,336.00
II-INDUSTRIAL INJURY	0.00	4.00	192.00	0.00	0.00	196.00
JUR-JURY DUTY	64.00	16.00	16.00	0.00	0.00	96.00
LC1-LABOR CODE 233	16.00	104.00	114.79	48.00	128.00	410.79
LTI-OCCPIL/LONGTRM INJ LEAVE	0.00	424.00	0.00	0.00	0.00	424.00
MLN-MILITARY ABSENCE-UNPAID	0.00	0.00	176.00	0.00	0.00	176.00
OWP-OFF WITH PERMISSION	0.00	80.50	0.00	0.00	2.00	82.50
RTO-REQUESTED TIME OFF	0.00	16.00	23.08	8.00	24.00	71.08
SCK-SICK PAY	16.00	169.25	122.00	48.00	104.00	459.25
SCW-SICK WITHOUT PAY	0.00	54.00	8.00	8.00	16.00	86.00
VAC-VACATION	80.00	588.50	276.00	0.00	252.00	1,196.50
Total Absence Hours	329	2,803	3,104	876	1,553	8,664
Number of Work Force (assigned)	30	111	105	49	52	347
Full Work Force hours/month	5,199	19,236	18,197	8,492	9,012	60,135
Absence as a % of Work Force	6%	15%	17%	10%	17%	14%
OVERTIME TYPE and HOURS	3940	3941	3942	3943	3944	Total
CTB-COMPENSATORY TIME TO BANK	53	235	126	67	35	516
OTP-PREM OVERTIME	450	1929	2328	905	945	6556
WLO-Worked Lunch Overtime	2	45	93	64	60	263
Total	504	2208	2547	1036	1040	7335
Overtime as a % of Work Force	10%	11%	14%	12%	12%	12%
UNCOVERED ABSENCES	3940	3941	3942	3943	3944	Total
Absences FTE	2	16	18	5	9	50
OTP FTE	3	13	15	6	6	42
FTE Difference	-1	3	3	-1	3	8

Rail Vehicle Engineering Project Summary

November 2011

Preparation of Engineering Technical Specifications	Tracking #	Status
Red Line AC Gear Box (Rev. 0)	A650/TS/026	Draft in Progress
P2000 Doors (Rev. 0)	P2000/TS/029	Draft in Progress
Articulation Diaphragm	P865-P2020/TS/060	Final Metro Review
Powered Axle Overhaul SOW	P2000 SOW	Released - Out for bid
Vital Relay Calibration	P865/P2020/TS/061	In Revising Process
DC Air Compressor Motor Overhaul	P865/P2020-TS-057	Released
Friction Brake Kit Less Air Compressor Overhaul	P2000/TS/035	In Revising Process
Center Truck Friction Brake Disc	P2000-TS-020 rev. 01	Released
A650 Battery Specification	A650/TS/39	Draft in Progress
Powered Axle Overhaul SOW	P865-P2020/TS/xx	Draft in Progress
General - All Lines		Status
Roadway Worker Protection		CPUC/Installing ProTran1 Device on All Fleets
Fleet Support, troubleshooting, and fix cars		CH2M Hill
P2000 Overhaul Program		Status
Master Controller - Bombardier Refurbish		Ongoing Program
Slewing Ring		Developing Overhaul Procedures
Traction Motor Overhaul Bid		Solicitation completed - Bid goes to Swiger Coil - Board Approved
New LED Destination Signs		Luminator Prototype In-Service on Train Under 6 month Evaluation
Disable Automatic Sanding		Fleet Modification completed.
P865/P2020 Program		Status
5k vs 7.5K Preventative Maintenance Evaluation		Investigation in-process
Cobra Brake Pad Testing		Completed AW0 test.
Static Inverter - Transtechnik		Inverter received back after upgrade and scheduled for installation and testing
EMI On CB1 Tripping		Investigation in-process
Traction Motor Overhaul		Solicitation completed - Bid goes to Dahl-Beck Electric - Board Approved
Remotely reset CB1 Breaker		
ABB Static Inverter		Calculation/system integration in process. Unit schedule for February 2012 delivery
P3010		Status
78 New Light Rail Vehicle		Solicitation is in progress.
P2000 Gold to Green		Status
Signal Package Conversion (Gold to Green)		On-Hold
A650 Overhaul Program		Status
Midlife Overhaul Specification		Specification Complete. On hold - Re-assessing.
Car 591/592		Propulsion Investigation complete
HPT Upgrade		Wabtec Proposal in review by Metro
AB New Traction Motor Mount		Prototype was accepted. Working with AB for Fleet Modification.
Roll-Back Speed Sensor System		EB Reset Investigation
Friction Brake Kit Overhaul		Solicitation completed - Bid goes to Wabtec - Board Approved
Hand Rail - Bike Area		Prototype approved - Procurement buying parts for fleet modification
Ribbed Rubber Flooring PRF		Dealing with OEM and other sources
P2550		Status
Vehicle Acceptance		Forty cars have been Final Accepted and eight cars are Conditionally Accepted.
Bike Space		Modified Car 710 as Prototype, ADA approval is complete, awaiting for final plan and signage by Metro-Marketing and bike committee.
Expo		Status
Readiness		Metro-RFS Engineering is supporting qualification and test activities of vehicles and wayside.
ATP Certification		Engineering/LTK/SYSTRA mainline testing

P2550 Vehicle Acceptance Program

November 2011

Vehicle Status Update:

- Metro has received 48 cars with 8 being conditionally accepted and 40 being final accepted.
- Two prototype cars remain at contractor's assembly site in Pittsburgh and are being updated to the latest configuration.

Engineering Activities Update:

- Event recorder: Configuration continues to be finalized; however, on-site support from contractor and supplier is required to resolve final technical issues. Faiveley-France is targeted to be on site in January 2012 to expedite qualification and provide training.
- Decelerometer Failures: Supplier is currently qualifying replacement decelerometers to replace those on the fleet.

Production Car Status – Pittsburgh:

- Cars 701 & 702 - Reconfiguration of cars is in process with rewiring and repinning of cables at 100% complete. These cars are now targeted to ship to Los Angeles in early 2012.

Project Management:

- Contract spares continue to be delivered to Metro and estimated to be 85% complete. All parts needed for day-to-day maintenance have been received. Critical parts needed for heavy repairs are scheduled to begin arriving in October 2011.
- Daily and bi-weekly meetings are scheduled with contractor management to address project issues.

QA-Warranty Program Projects Summary

November 2011

QA-WARRANTY ACTIVITIES

- To date, conducted 34 QA audits: MRL (6), MBL (7), MGL (7), MGD (10), Vendors (4).
- P2550 Car Modification Campaign / testing oversight, Metro/ABI warranty meetings, reliability trend tracking, spare parts tracking, warranty man-hours review.
- A650 Base Buy & Option car fleet warranty – Truck Frame Modification Campaign (26 trucks modified to date).
- Warranty Cost Avoidance savings for November is \$105,511.00.
- Conducted 18 QA First Article Inspections.
- Tech support, Expo Line ATP/TWC Project, Overhauls / Mod Programs, (A650/P2000/P2020/865) QA tech assist / warranty oversight, Friction Brakes, HPT's, Brake Resistor Grids, T/M's, MA's, ATP Vital Relays, CB1 Trips, HVAC, Doors, Video downloads, GE Board testing, AC blowers & Evaporators, Auto Sanding System.
- Provided Gage Calibration & Oil Analysis Oversight.
- Provided M3 data processing coverage to all RFS Divisions.
- Revised QA & Warranty Manuals (2nd edition) and awaiting upper management approval signatures.
- Archived all reports and records onto QA-Warranty's Share Drive.

RFS Instruction Department Activities

November 2011

Training classes completed during the month of November 2011

Description	Course Hours	Student Count	Training Hours
<u>Blue & Expo Line Training - (P865/2020 & P2000 LRV):</u>			
RFS SIEMENS 2000 PANTOGRAPH	8	5	40
RFS SIEMENS 2000 COMMUNICATIONS	24	5	120
RFS SIEMENS 2000 DOOR CONTROLS	16	5	80
Total Blue Line Training (Hours):			240

<u>Red Line Training (Breda A650 HRV):</u>			
REFRIGERANT RECOVERY SYSTEMS (608)	16	3	48
Total Red Line Training (Hours):			48

<u>Green Line Training (P2000 LRVs):</u>			
RFS SIEMENS 2000 PANTOGRAPH	8	1	8
RFS SIEMENS 2000 COMMUNICATIONS	24	1	24
RFS SIEMENS 2000 DOOR CONTROLS	16	1	16
Total Green Line Training (Hours):			48

<u>Gold Line Training (P2550 LRVs):</u>			
RFS ANSALDOBREDA 2550 FRICTION BRAKE	32	3	96
RFS ANSALDOBREDA 2550 PROPULSION	80	3	240
RFS ANSALDOBREDA 2550 LIGHTING	12	3	36
Total Gold Line Training (Hours):			372

Total RFS Instruction for the month of November 2011 (Hours): **708.0**

Other Instruction Activities

PTU configuration for Redline cars 180

Total Other Instruction Activities **180.0**

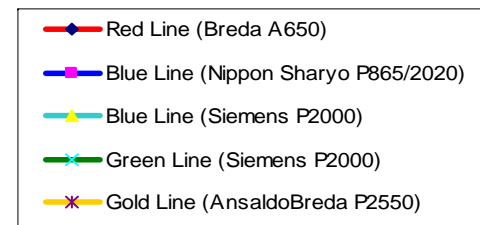
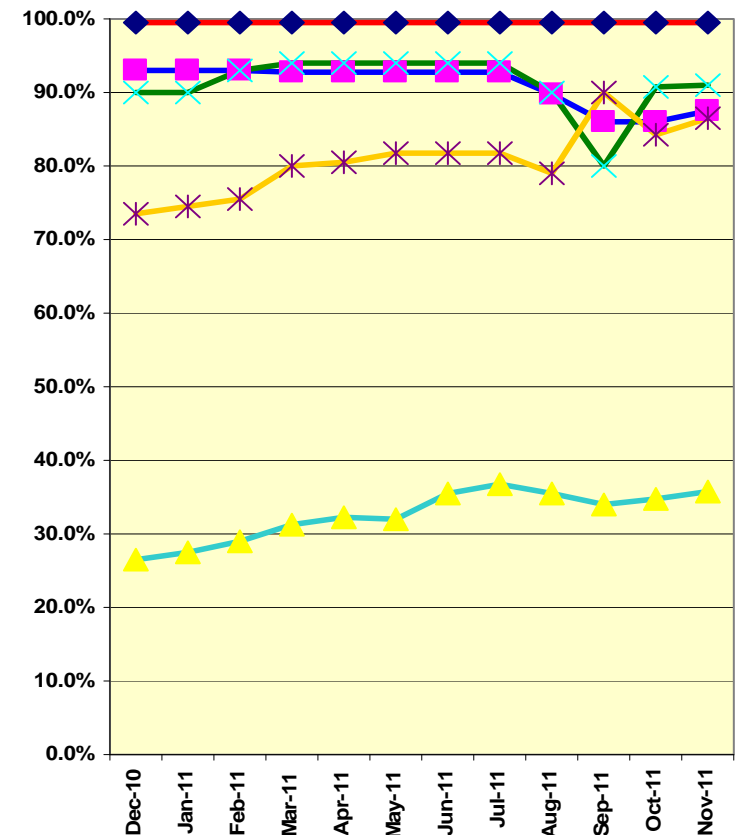
Core Vehicle Training Completed: **BLUE RED GREEN GOLD**

Percentage of core vehicle training complete: **87.4% 99.5% 91.1% 86.5%**

Siemens P2000 training complete: 35.7% N/A N/A N/A

Average Specialist Rail Experience Level in Years: **11.6 10.3 8.9 9.8**

Core Training Completed



Variations caused by new hires, employee transfers, & training completed