



Rail Fleet Services Monthly Report October 2011

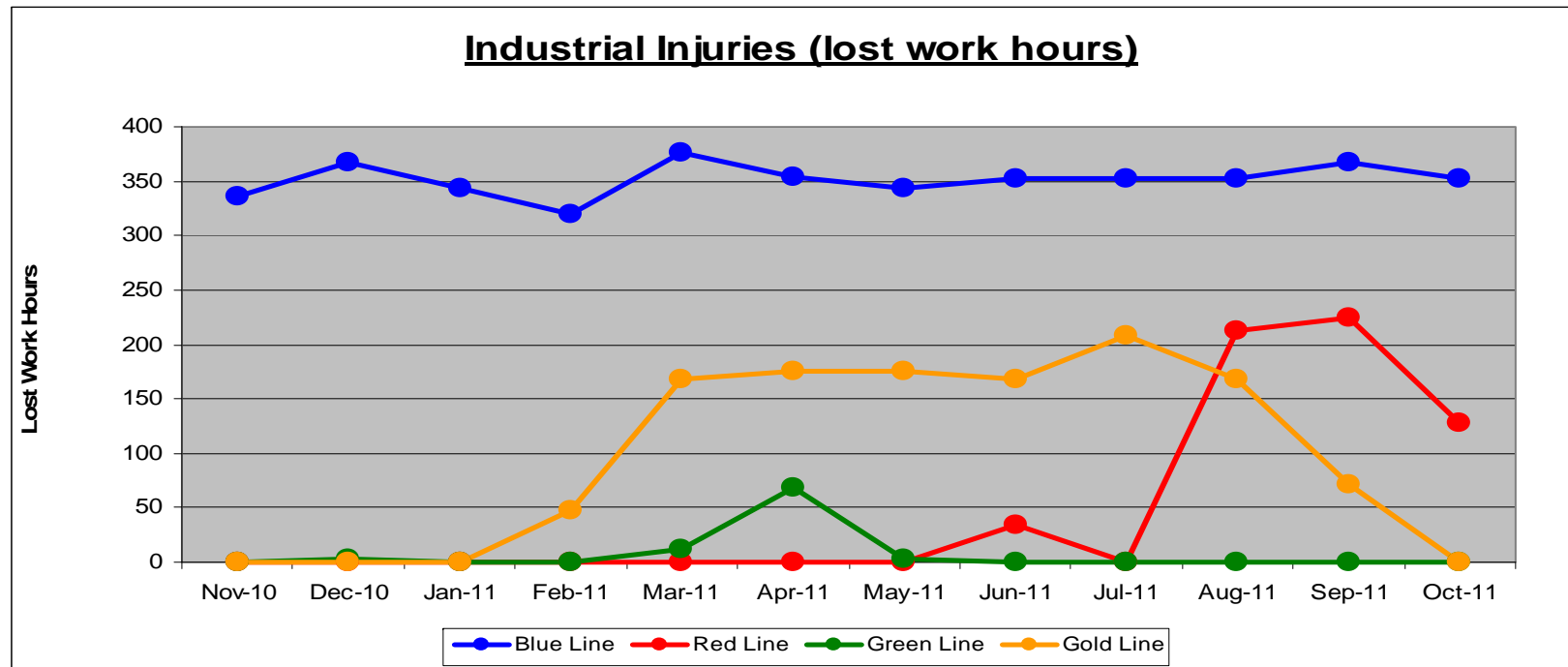


Metro

Table of Contents

•	Safety	
	- Industrial Injuries	Page 3
	- Rail Vehicle Accidents & Major Incidents	Page 4
•	Customer Service	
	- Service Delivery – AM/PM Pull-Outs	Page 5
	- Vehicle Utilization – Blue Line & Green Line	Page 6
	- Vehicle Utilization – Red Line & Gold Line	Page 7
	- Mean Miles Between Failures (Major)	Page 8
	- Repeat Failures	Page 9
•	Business Processes	
	- Major Incidents	Page 10
	- Preventive Maintenance Compliance	Page 11
•	Finance	
	- Vandalism & Graffiti Costs	Page 12
	- Graffiti Pictures	Page 13
	- Material & Labor Costs	Page 14
	- Cost per mile	Page 15
	- Absence vs. Overtime	Page 16
•	Engineering	
	- Rail Vehicle Engineering Project Summary	Page 17
	- P2550 Vehicle Acceptance Program	Page 18
•	Quality Assurance	
	- Warranty Program Projects Summary	Page 19
•	Growth	
	- RFS Instruction Department Activities	Page 20

Industrial Injuries – Lost Work Hours October 2011



	Employees		October 2011 Lost Work Hours			
	Assigned	Active	Service Attendant	Maint. Specialist	Body Repairer /Painter	Total Hrs.
Blue Line	112	105	8	168	176	352
Red Line	105	101	8	120	0	128
Green Line	49	45	0	0	0	0
Gold Line	52	50	0	0	0	0
Eng/QA/Admin	29	29	0	0	0	0
Totals	347	330	16	288	176	480

Rail Vehicle Accidents & Major Incidents

October 2011

Repair Costs	Nov-10	Dec-10	Jan-11	Feb-11	Mar-11	Apr-11	May-11	Jun-11	Jul-11	Aug-11	Sep-11	Oct-11	Totals
Blue Line	\$10,716	\$16,938	\$961	\$2,114	\$684	\$26,990	\$4,844	\$189	\$0	\$395	\$7,337	\$888	\$72,056
Red Line	\$0	\$562	\$0	\$0	\$0	\$0	\$0	\$0	\$0	\$0	\$0	\$0	\$562
Green Line	\$0	\$0	\$0	\$0	\$0	\$0	\$0	\$0	\$0	\$0	\$0	\$0	\$0
Gold Line	\$3,016	\$1,374	\$239	\$13	\$4,031	\$0	\$0	\$5,458	\$3,763	\$2,567	\$0	\$320	\$20,781
Totals	\$13,732	\$18,874	\$1,200	\$2,127	\$4,715	\$26,990	\$4,844	\$5,647	\$3,763	\$2,962	\$7,337	\$1,208	\$93,399

Rail Vehicle Accident Costs - October 2011				
Metro Blue Main Line				
Date	Incident #	Problem code	Incident Description	Cost
10/14/2011	2076026	Train vs. Vehicle	TR10 10/73 at Washington and Central, Track 2 south.	\$0.00
10/16/2011	2078244	Train vs. Object	10/71, External T-compartment cover damaged, (138B) - 147-100, Train 2, T-228, 1st Street station southbound.	\$888.00
TOTAL				\$888.00
Metro Gold Main Line				
Date	Incident #	Problem code	Incident Description	Cost
10/28/2011	2084889	Train vs. Vehicle	T-133, Train No. 8, LRV (727B), 748 at Downey Road, southbound on Track No. 2.	\$320.00
TOTAL				320.00
GRAND TOTAL				\$1,208.00
(10-71) = Train vs. Object, (10-72) = Train vs. Pedestrian, (10-73) = Train vs. Vehicle (10-74) = Train vs. MTA Vehicle, (10-75) = Derailment				

Service Delivery October 2011

Blue Line – Fleet Size 69 cars

	<u>Vehicles</u>	<u>Average</u>	<u>% Up</u>
<u>Pull Out</u>	<u>Required</u>	<u>Available</u>	<u>(Down)</u>
Weekday:	60	62	104%
Weekend:	36	40	112%

Late Pullouts: 0 *

Monthly Mileage: 417,527 miles

Expo Line – Fleet Size 21 cars

Expo Revenue Operations Date (ROD) to be determined.

Red Line - Fleet Size 104 cars

	<u>Vehicles</u>	<u>Average</u>	<u>% Up</u>
<u>Pull Out</u>	<u>Required</u>	<u>Available</u>	<u>(Down)</u>
Weekday:	70	83	119%
Weekend:	48	67	139%

Late Pullouts: 0 *

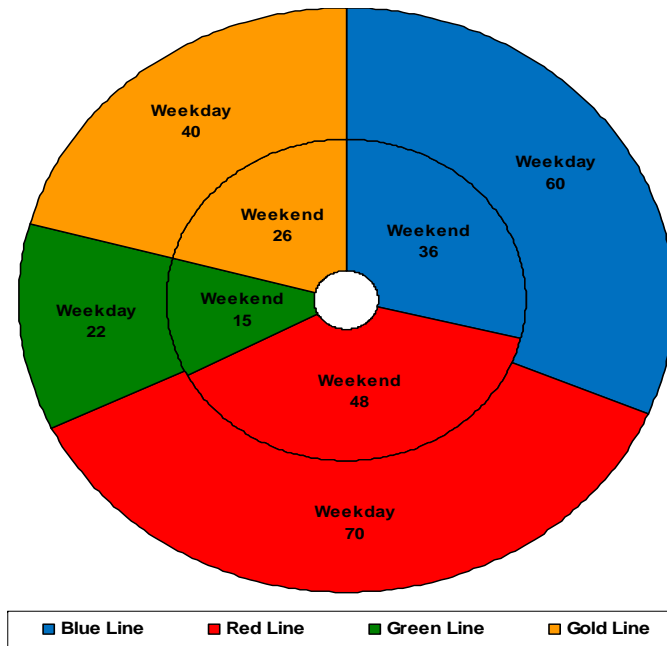
Monthly Mileage: 551,178 miles

Green Line – Fleet Size 29 cars

	<u>Vehicles</u>	<u>Average</u>	<u>% Up</u>
<u>Pull Out</u>	<u>Required</u>	<u>Available</u>	<u>(Down)</u>
Weekday:	22	24	110%
Weekend:	15	23	153%

Late Pullouts: 0 *

Monthly Mileage: 226,373 miles



Gold Line – Fleet Size 50 cars

P2550 – Fleet Size 48 cars

P2000 – Fleet Size 2 cars

	<u>Vehicles</u>	<u>Average</u>	<u>% Up</u>
<u>Pull Out</u>	<u>Required</u>	<u>Available</u>	<u>(Down)</u>
Weekday:	40	40	100%
Weekend:	26	38	148%

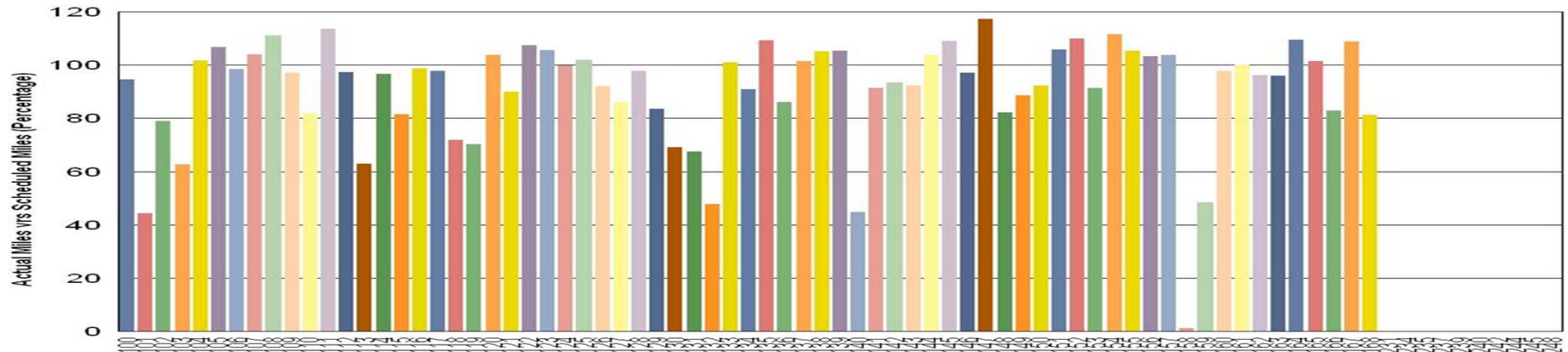
Late Pullouts: 0 *

Monthly Mileage: 273,273 miles

* Due to a vehicle related problem

Vehicle Utilization October 2011

Metro Blue/Expo Line Fleet



Blue Line:

158 Vehicle is out service on the Expo Line for TWC Acceptance Testing.

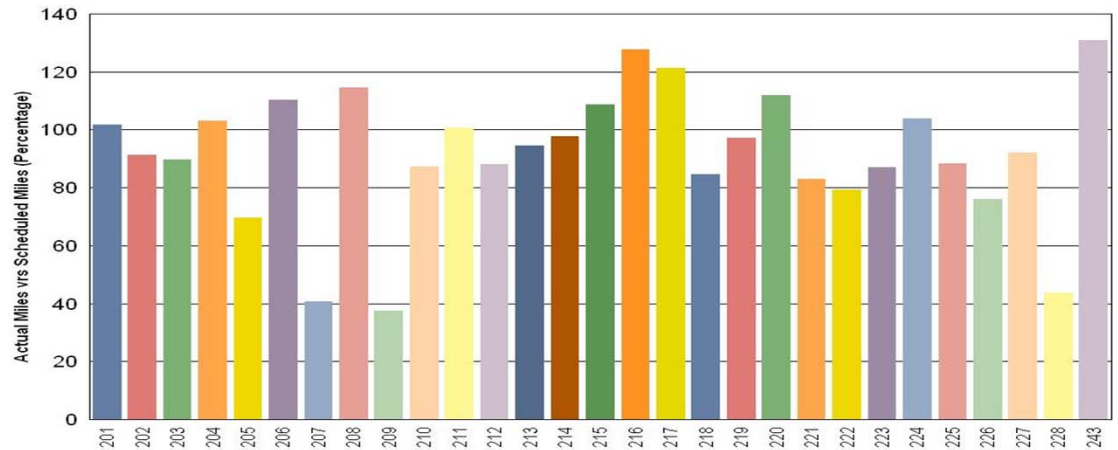
Expo Line:

231-248 The entire EXPO fleet (15 cars) are not in revenue service at this time. Mileage will be minimal each month until the Expo Line opens.

Green Line:

209 The low utilization of Vehicle 209 is due to an ATP problem.

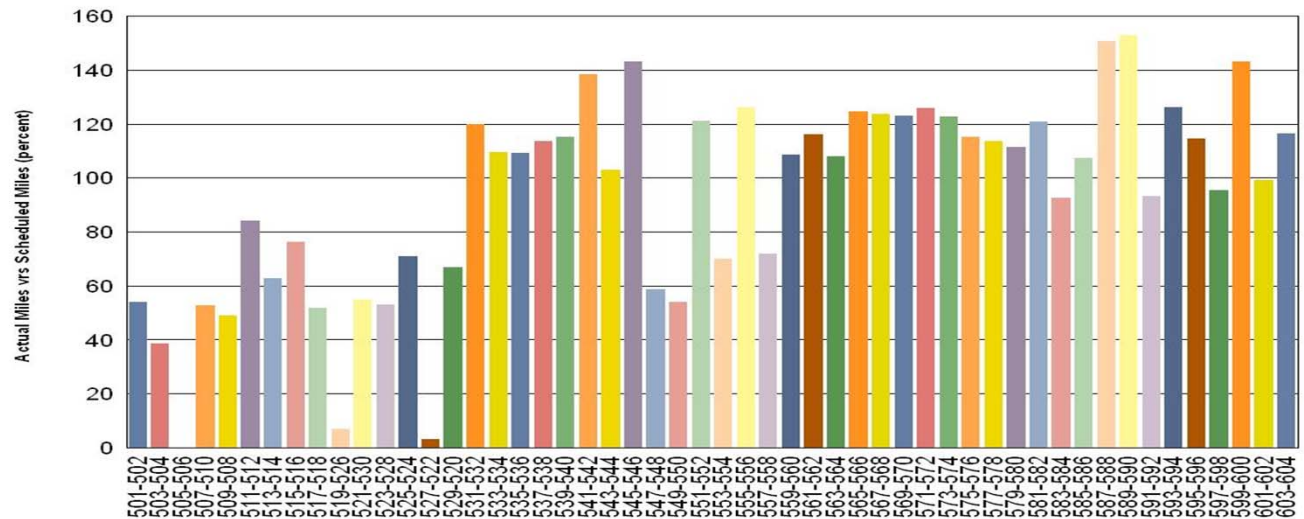
Metro Green Line



Vehicle Utilization October 2011

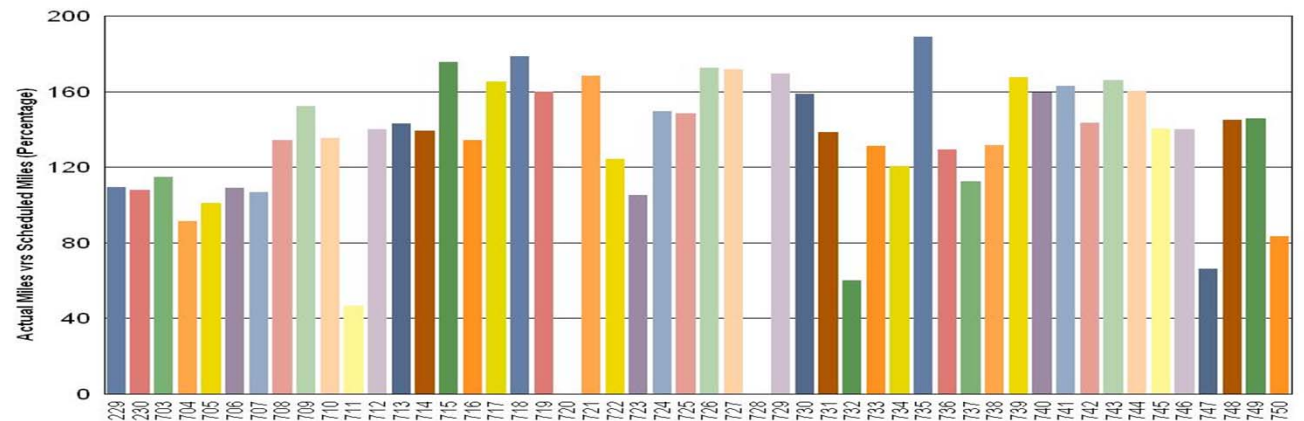
Red Line: Explanation for under-used vehicles:
503-504 Multi-time repeater is due to door problems.
505-506 This is due to a long-term rebuild program.
519-526 Vehicle failures due to problems with friction brake and gear box damage.
527-522 This is due to propulsion faults.

Metro Red Line



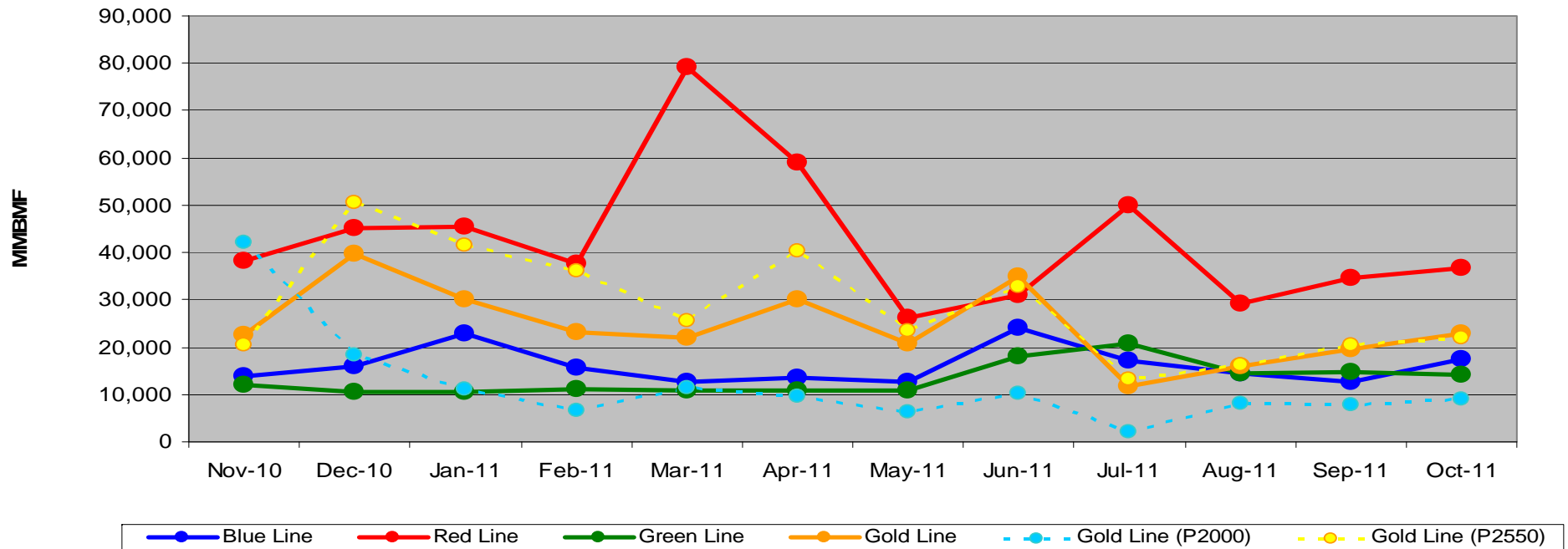
Gold Line:
720 Defective decelerometer with no current replacement part available.
728 Vehicle out of service due to yard derailment. Repairs initiated on 8/26/11.

Metro Gold Line



Mean Miles Between Failures (Major) Year to Date

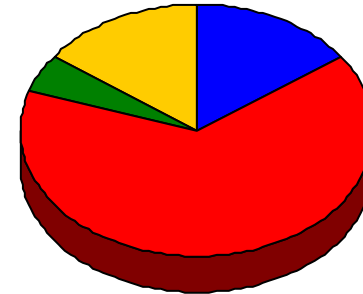
Mean Miles Between Major Failures (11 months)



	Nov-10	Dec-10	Jan-11	Feb-11	Mar-11	Apr-11	May-11	Jun-11	Jul-11	Aug-11	Sep-11	Oct-11
Blue Line	13,936	16,095	22,749	15,601	12,500	13,483	12,557	24,050	17,123	14,425	12,679	17,397
Red Line	38,293	45,211	45,357	37,732	79,178	59,089	26,084	30,932	50,099	29,298	34,535	36,745
Green Line	12,173	10,575	10,535	11,163	10,687	10,787	10,882	18,177	20,877	14,482	14,740	14,148
Gold Line	22,664	39,858	30,095	23,095	22,044	30,145	20,776	34,792	11,668	15,906	19,647	22,773
Gold Line (P2000)	42,007	18,326	11,208	6,689	11,413	9,625	6,377	10,351	2,153	8,019	7,872	8,887
Gold Line (P2550)	20,515	50,625	41,426	36,220	25,588	40,404	23,394	32,767	13,095	16,370	20,553	22,032

Repeat Failures October 2011

Metro Blue Line: 3 Repeat Failures
 Metro Red Line: 13 Repeat Failures
 Metro Green Line: 1 Repeat Failures
 Metro Gold Line: 3 Repeat Failures



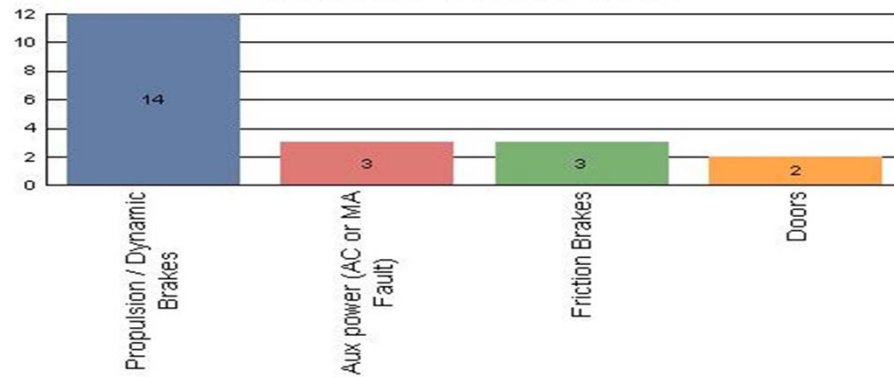
■ Blue Line ■ Red Line ■ Green Line ■ Gold Line

Repeater Car Details - October 2011								
System	Blue Line		Red Line		Green Line		Gold Line	
	Car #	Repeats	Car #	Repeats	Car #	Repeats	Car #	Repeats
ATP							716	1
							750	1
Doors	131	3	503	5			716	1
Friction Brakes			550	3				
HVAC			574	1				
Propulsion/Dynamic Brake			534	2	223	1		
			554	2				
TOTALS	3		13		1		3	

Major Incidents October 2011

Metro Blue Line

Top Incident Categories



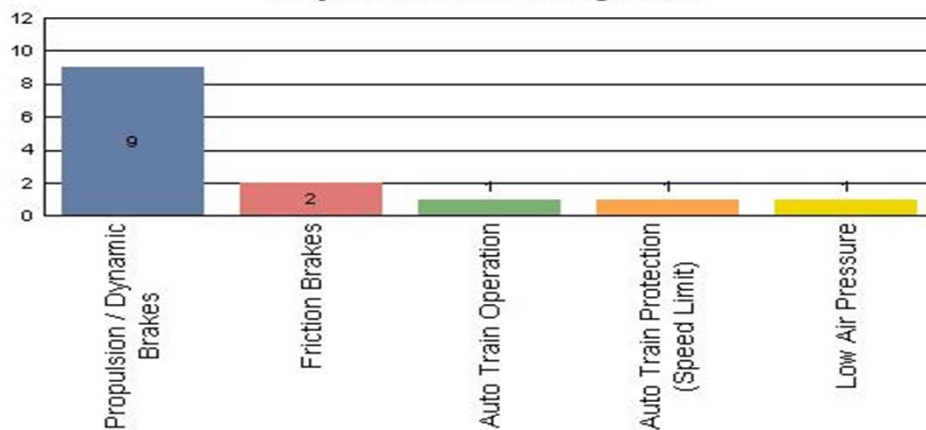
Metro Red Line

Top Incident Categories



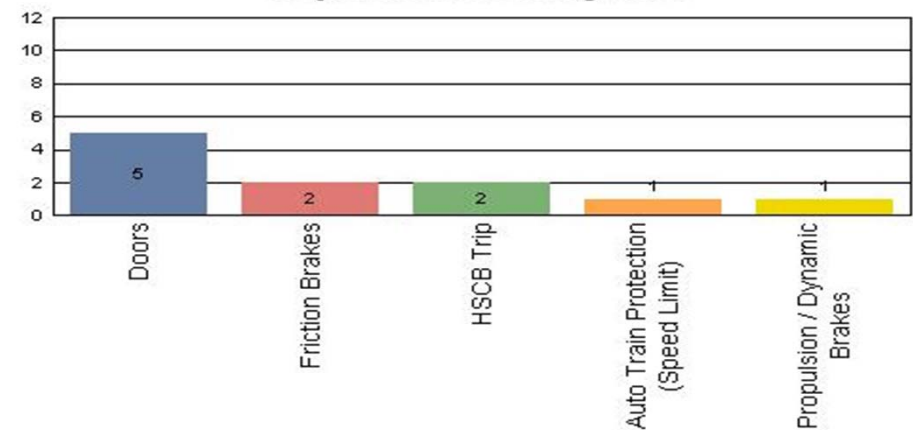
Metro Green Line

Top Incident Categories



Metro Gold Line

Top Incident Categories



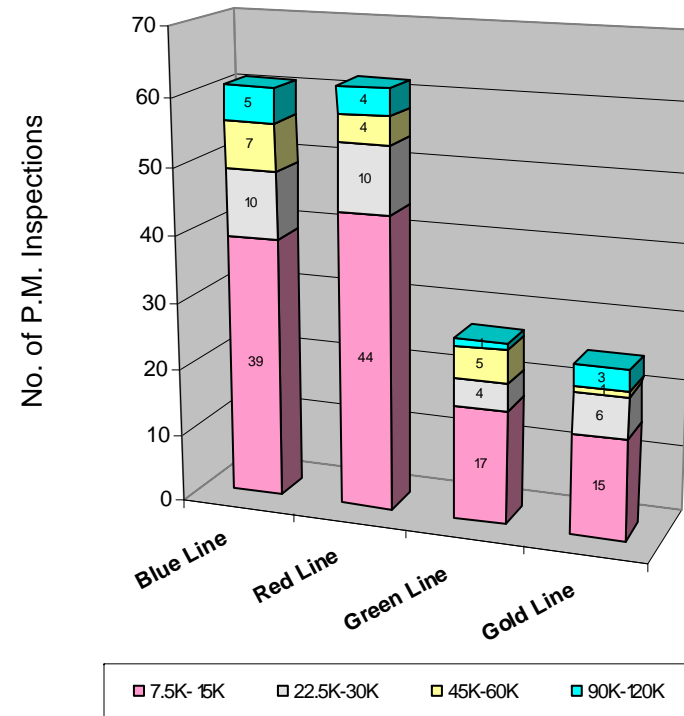
Preventive Maintenance Compliance

October 2011

PM Compliance	Nov-10	Dec-10	Jan-11	Feb-11	Mar-11	Apr-11	May-11	Jun-11	Jul-11	Aug-11	Sep-11	Oct-11
Blue Line	100%	100%	100%	100%	100%	100%	100%	100%	100%	100%	100%	100%
Red Line	97%	100%	100%	97%	100%	100%	90%	100%	100%	100%	100%	100%
Green Line	100%	100%	100%	100%	100%	100%	100%	100%	100%	100%	100%	100%
Gold Line	100%	100%	100%	100%	100%	100%	100%	100%	100%	100%	100%	100%

October 2011 Preventive Maintenance Inspections

No. of P.M. Inspections	7.5K-15K	22.5K-30K	45K-60K	90K-120K	Totals
Blue Line	39	10	7	5	61
Red Line	44	10	4	4	62
Green Line	17	4	5	1	27
Gold Line	15	6	1	3	25
Totals:	115	30	17	13	175

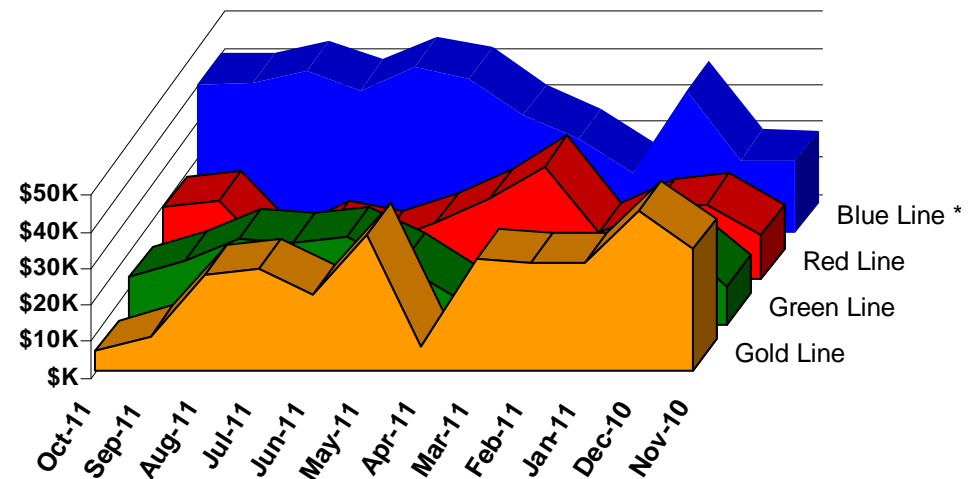


Vandalism & Graffiti Report

October 2011

	Nov-10	Dec-10	Jan-11	Feb-11	Mar-11	Apr-11	May-11	Jun-11	Jul-11	Aug-11	Sep-11	Oct-11	Year-to-Date
Blue Line *	\$19K	\$20K	\$39K	\$16K	\$26K	\$32K	\$42K	\$45K	\$39K	\$44K	\$41K	\$41K	\$404K
Red Line	\$12K	\$20K	\$19K	\$12K	\$31K	\$22K	\$15K	\$10K	\$13K	\$6K	\$21K	\$20K	\$200K
Green Line	\$10K	\$23K	\$7K	\$15K	\$7K	\$8K	\$16K	\$24K	\$22K	\$23K	\$17K	\$13K	\$188K
Gold Line	\$33K	\$44K	\$29K	\$29K	\$31K	\$7K	\$37K	\$21K	\$28K	\$26K	\$9K	\$5K	\$299K
Totals:	\$75K	\$107K	\$94K	\$73K	\$94K	\$68K	\$111K	\$100K	\$102K	\$99K	\$89K	\$78K	\$1,091K

October 2011 Vandalism & Graffiti - All Rail				
	Qty	Labor	Materials	Totals
Windows replaced	19	\$2,331	\$4,125	\$6,456
Vandal Shields	371	\$8,178	\$5,616	\$13,794
Seats Cleaned	836	\$2,295	\$0	\$2,295
Seats Replaced	243	\$7,597	\$6,115	\$13,712
Graffiti removal - other	864	\$11,198	\$450	\$11,648
Repainting panels	3	\$28,900	\$1,452	\$30,352
Totals for October 2011	2,336	\$60,499	\$17,758	\$78,257



* Blue Line totals include vandalism & graffiti removal from the P2000 cars that will soon be used on the Expo Line.

Graffiti Pictures October 2011

Blue Line



Green Line



Gold Line

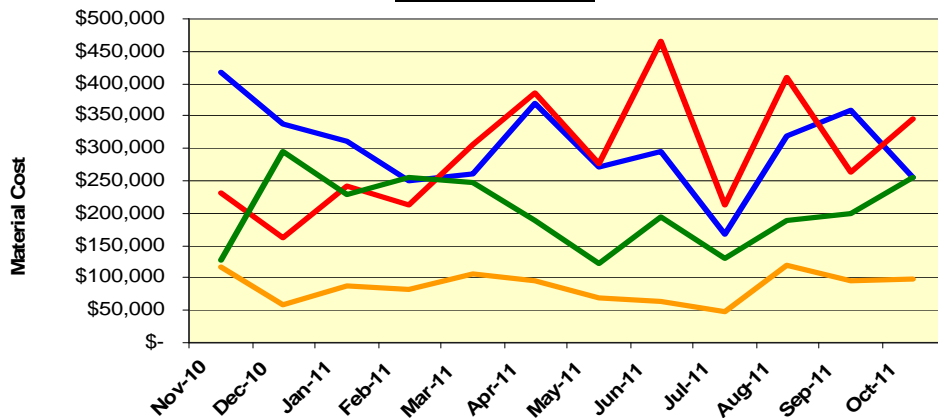


Material and Labor Costs

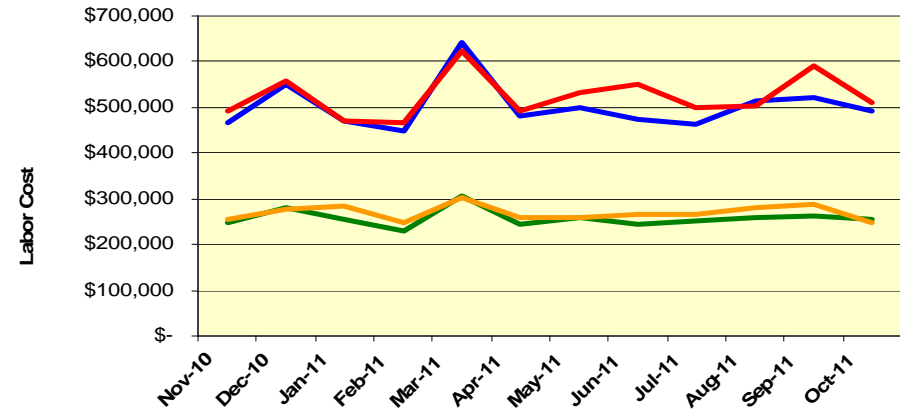
October 2011

MATERIALS	Nov-10	Dec-10	Jan-11	Feb-11	Mar-11	Apr-11	May-11	Jun-11	Jul-11	Aug-11	Sep-11	Oct-11
Blue Line	\$ 416,656	\$ 337,959	\$ 311,345	\$ 249,678	\$ 259,887	\$ 368,467	\$ 272,272	\$ 294,179	\$ 167,328	\$ 318,296	\$ 359,508	\$ 256,152
Red Line	\$ 230,298	\$ 162,960	\$ 240,990	\$ 213,323	\$ 305,345	\$ 386,455	\$ 277,113	\$ 466,346	\$ 212,074	\$ 410,299	\$ 263,808	\$ 344,563
Green Line	\$ 128,574	\$ 295,924	\$ 228,636	\$ 255,578	\$ 247,907	\$ 189,460	\$ 121,859	\$ 194,750	\$ 129,976	\$ 187,997	\$ 198,811	\$ 254,691
Gold Line	\$ 117,573	\$ 58,796	\$ 86,984	\$ 82,141	\$ 105,452	\$ 96,824	\$ 67,967	\$ 64,397	\$ 47,760	\$ 118,401	\$ 94,967	\$ 98,380
Totals	\$ 893,102	\$ 855,640	\$ 867,955	\$ 800,720	\$ 918,591	\$ 1,041,206	\$ 739,212	\$ 1,019,672	\$ 557,138	\$ 1,034,993	\$ 917,095	\$ 953,786

Material Costs



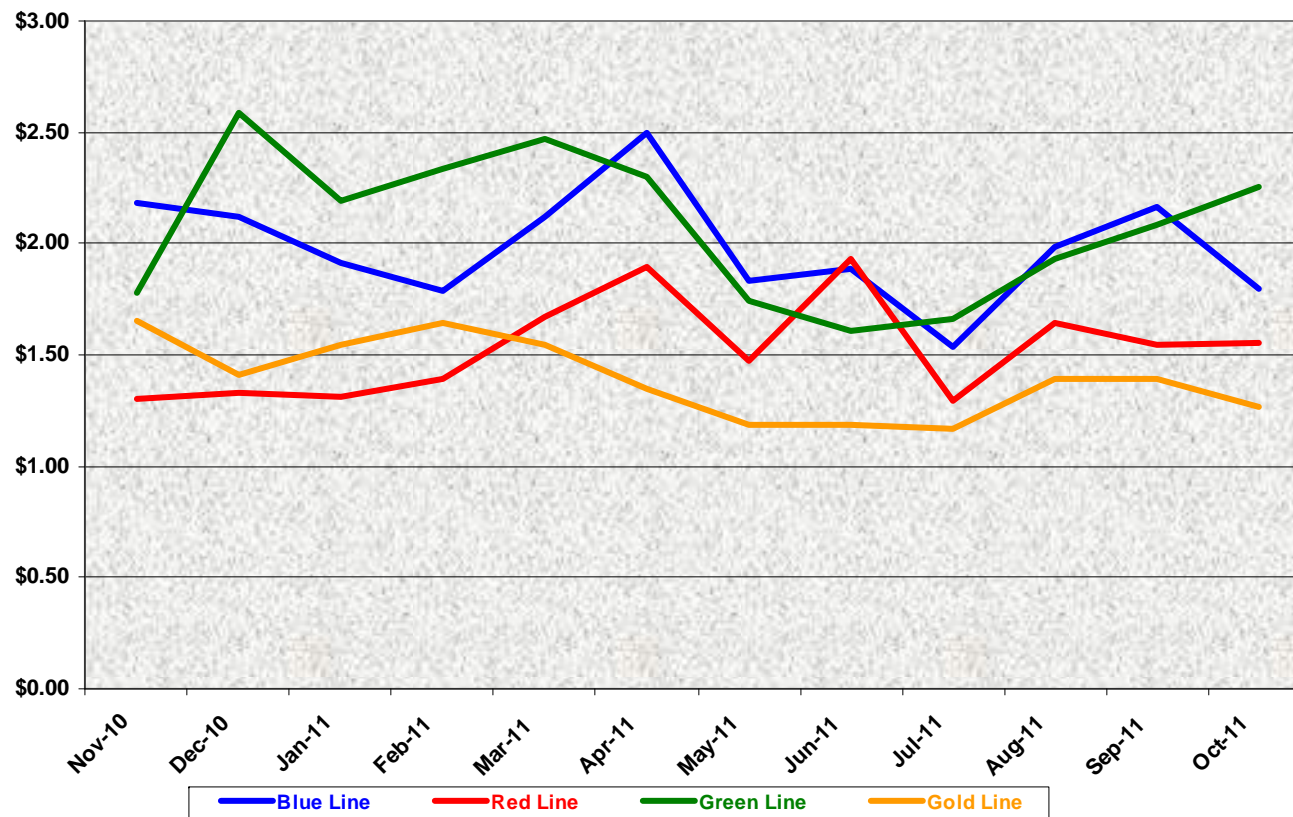
Labor Costs



LABOR	Nov-10	Dec-10	Jan-11	Feb-11	Mar-11	Apr-11	May-11	Jun-11	Jul-11	Aug-11	Sep-11	Oct-11
Blue Line	\$ 466,805	\$ 549,827	\$ 470,555	\$ 447,928	\$ 642,540	\$ 480,658	\$ 500,263	\$ 475,354	\$ 464,468	\$ 513,406	\$ 520,526	\$ 493,739
Red Line	\$ 491,124	\$ 556,636	\$ 472,105	\$ 467,849	\$ 622,201	\$ 493,104	\$ 531,171	\$ 550,464	\$ 500,504	\$ 504,785	\$ 589,986	\$ 510,944
Green Line	\$ 249,736	\$ 279,447	\$ 255,429	\$ 230,329	\$ 305,821	\$ 244,809	\$ 257,678	\$ 243,969	\$ 250,617	\$ 259,629	\$ 261,796	\$ 256,610
Gold Line	\$ 255,054	\$ 278,165	\$ 285,821	\$ 248,537	\$ 303,998	\$ 259,784	\$ 257,114	\$ 264,854	\$ 265,256	\$ 280,715	\$ 289,048	\$ 246,890
Totals	\$ 1,462,719	\$ 1,664,075	\$ 1,483,910	\$ 1,394,643	\$ 1,874,560	\$ 1,478,355	\$ 1,546,225	\$ 1,534,641	\$ 1,480,845	\$ 1,558,535	\$ 1,661,357	\$ 1,508,183

Cost Per Mile October 2011

Cost per mile:	Nov-10	Dec-10	Jan-11	Feb-11	Mar-11	Apr-11	May-11	Jun-11	Jul-11	Aug-11	Sep-11	Oct-11	Average
Blue Line	\$2.18	\$2.12	\$1.91	\$1.79	\$2.12	\$2.50	\$1.83	\$1.88	\$1.54	\$1.99	\$2.17	\$1.80	\$1.99
Red Line	\$1.30	\$1.33	\$1.31	\$1.39	\$1.67	\$1.90	\$1.48	\$1.93	\$1.29	\$1.64	\$1.55	\$1.55	\$1.53
Green Line	\$1.78	\$2.59	\$2.19	\$2.34	\$2.47	\$2.30	\$1.74	\$1.61	\$1.66	\$1.93	\$2.08	\$2.26	\$2.08
Gold Line	\$1.65	\$1.41	\$1.55	\$1.65	\$1.55	\$1.35	\$1.18	\$1.18	\$1.17	\$1.39	\$1.40	\$1.26	\$1.39



No facility costs are included

Absences vs. Overtime

October 2011

ABSENCE TYPE and HOURS	3940	3941	3942	3943	3944	Total
AWP-ABSENT W/O PERMISSION	0.00	1.63	0.00	8.00	8.00	17.63
BER-BEREAVEMENT	0.00	48.00	24.00	0.00	0.00	72.00
CTO-COMPENSATORY TIME OFF	0.00	102.00	219.00	108.12	131.50	560.62
CVA - CASUAL VACATION	4.00	449.00	556.00	94.00	228.00	1,331.00
EFH-EMG. FLOAT HOL.	0.00	8.00	64.00	32.00	48.00	152.00
ETO-EXCUSED TIME OFF	0.00	60.50	20.00	7.45	27.02	114.97
FML-FAMILY CARE LEAVE	0.00	256.00	80.85	104.00	156.42	597.27
HLF-HOLIDAY FLOATING	24.00	376.00	178.00	8.00	100.00	686.00
II-INDUSTRIAL INJURY	0.00	8.00	128.00	0.00	0.00	136.00
JUR-JURY DUTY	0.00	24.00	0.00	0.00	0.00	24.00
LC1-LABOR CODE 233	16.00	120.00	176.75	48.00	152.00	512.75
LTI-OCCPIL/LONGTRM INJ LEAVE	0.00	344.00	0.00	0.00	0.00	344.00
MLN-MILITARY ABSENCE-UNPAID	0.00	0.00	168.00	0.00	0.00	168.00
RTO-REQUESTED TIME OFF-NO PAY	0.00	16.00	8.00	3.17	0.00	27.17
SCK-SICK PAY	8.00	304.00	152.00	72.00	64.00	600.00
SCW-SICK WITHOUT PAY	0.00	64.00	0.00	8.00	16.00	88.00
VAC-VACATION	96.00	326.50	480.50	188.00	316.00	1,407.00
Total Absence Hours	148	2,508	2,255	681	1,247	6,838
Number of Work Force (assigned)	29	112	105	49	52	347
Full Work Force hours/month	5,026	19,410	18,197	8,492	9,012	60,135
Absence as a % of Work Force	3%	13%	12%	8%	14%	11%
OVERTIME TYPE and HOURS	3940	3941	3942	3943	3944	Total
CTB-COMPENSATORY TIME TO BANK	0	222	55	120	149	546
OTP-PREM OVERTIME	625	1505	2486	1037	1085	6737
WLO-Worked Lunch Overtime	2	37	84	69	60	251
Total	626	1763	2624	1226	1295	7534
Overtime as a % of Work Force	12%	9%	14%	14%	14%	13%
UNCOVERED ABSENCES	3940	3941	3942	3943	3944	Total
Absences FTE	1	14	13	4	7	39
OTP FTE	4	10	15	7	7	43
FTE Difference	-3	4	-2	-3	0	-4

Rail Vehicle Engineering Project Summary

October 2011

Preparation of Engineering Technical Specifications	Tracking #	Status
Red Line AC Gear Box (Rev. 0)	A650/TS/026	Draft in Progress
P2000 Doors (Rev. 0)	P2000/TS/029	Draft in Progress
Articulation Bellow	P865-P2020/TS/060	Final Metro Review
Powered Axle Overhaul SOW	P2000 SOW	Released - Out for bid
Vital Relay Calibration	P865/P2020/TS/061	In Revising Process
DC Air Compressor Motor Overhaul	P865/P2020-TS-057	Released
Center Truck Friction Brake Disc	P2000-TS-020 rev. 01	Released
A650 Battery Specification	A650/TS/xx	Draft in Progress
Powered Axle Overhaul SOW	P865-P2020/TS/xx	Draft in Progress
General - All Lines		Status
1. Roadway Worker Protection		CPUC/Installing ProTran1 Device on All Fleets
P2000 Overhaul Program		Status
Master Controller - Bombardier Refurbish		Ongoing Program
Slewing Ring		Developing Overhaul Procedures
Traction Motor Overhaul Bid		Solicitation completed - Bid goes to Swiger Coil - Board Approved
New LED Destination Signs		Luminator Prototype In-Service on Train Under 6 month Evaluation
Disable Automatic Sanding		Fleet Modification completed.
P865/P2020 Program		Status
5k vs 7.5K Preventative Maintenance Evaluation		Investigation in-process
Cobra Brake Pad Testing		Completed AWO test.
Static Inverter - Transtechnik		Inverter shipped to Transtechnik for upgrade
EMI On CB1 Tripping		Investigation in-process
Traction Motor Overhaul		Solicitation completed - Bid goes to Dahl-Beck Electric - Board Approved
Remotely reset CB1 Breaker		Fleet Modification
P3010		Status
78 New Light Rail Vehicle		Solicitation is in progress.
P2000 Gold to Green		Status
Signal Package Conversion (Gold to Green Ln)		On-Hold
A650 Overhaul Program		Status
Midlife Overhaul Specification		Specification Complete. Preparing Industry Review.
Car 591/592		Propulsion Investigation complete
HPT Upgrade		Wabtec Proposal in review by Metro
AB New Traction Motor Mount		Prototype was accepted. Working with AB for Fleet Modification.
Roll-Back Speed Sensor System		EB Reset Investigation
Friction Brake Kit Overhaul		Solicitation completed - Bid goes to Wabtec - Board Approved
Hand Rail - Bike Area		Prototype approved - Procurement buying parts for fleet modification
Ribbed Rubber Flooring PRF		Dealing with OEM and other sources
P2550		Status
Vehicle Acceptance		Forty-eight cars have been Conditionally Accepted. Awaiting shipment of cars 701 & 702.
Bike Space		Modified Car 710 as Prototype, ADA approval is complete, awaiting for final plan and signage by Metro-Marketing and bike committee.
Expo		Status
Readiness		Metro-RFS Engineering is supporting qualification and test activities of vehicles and wayside.



P2550 Vehicle Acceptance Program

October 2011

Vehicle Status Update:

- Metro has received 48 cars with 8 being conditionally accepted and 40 being final accepted.
- Two prototype cars remain at contractor's assembly site in Pittsburg and are being updated to the latest configuration.

Engineering Activities Update:

- Event recorder: Configuration continues to be finalized; however, on-site support from contractor and supplier is required to resolve final technical issues.
- ATP/TWC Board Failures: Supplier developed new software to address issues with the multifunction PCB. Field testing was performed in August 2011. As a result, the software changes, replacing the "bad" boards, are now working. Contractor is continuing its investigation on the remaining failures.
- Decelerometer Failures: Supplier is currently qualifying replacement decelerometers to replace those on the fleet.

Production Car Status – Pittsburg:

- Cars 701& 702 - Reconfiguration of cars is in process with rewiring and repining of cables at 100% complete. Car 701 is now scheduled to ship to Los Angeles in December 2011 and car 702 in January 2012.

Project Management:

- Contract spares continue to be delivered to Metro and estimated to be 85% complete. All parts needed for day-to-day maintenance have been received. Critical parts needed for heavy repairs are scheduled to begin arriving in October 2011.
- Daily and bi-weekly meetings are scheduled with contractor management to address project issues.

QA-Warranty Program Projects Summary

October 2011

QUALITY ASSURANCE (QA) WARRANTY ACTIVITIES:

- The 2-year contract for oil analysis has been awarded to Analysts Inc. Oil Analysis oversight resumes.
- FTA FY 2011 Triennial Review. (Warranty Audit)
- OIG 7/20/11 closeout confirmation action pending.
- American Public Transit Exams Institute. (QA & Warranty Audit)
- QA audits conducted 32 audits: MRL (6), MBL (6), MGL (6), MGD (10), Vendors (4).
- P2550 Car Modification Campaign / testing oversight, Metro/ABI warranty meetings, tracking trends, parts reimbursement & warranty man-hours review.
- A650 Base Buy & Option car fleet warranty – Truck Frame Modification Campaign (24 trucks modified to date). MRL Warranty Cost Avoidance savings for August was \$97,395.00
- QA conducted 15 First Article Inspections.
- Tech support, Expo Line ATP/TWC Project, A650 Car Restoration Project (505/506), Overhauls / Mod Programs, (A650/P2000/P2020/865) Friction Brakes, HPT's, Brake Resistor Grids, T/M's, MA's, ATP Vital Relays, CB1 Trips, HVAC, Doors, Brandt Truck qualifications & testing, Video downloads.
- M3 equipment records for RFS divisions standardized.
- QA & Warranty Manuals revisions (2nd edition) pending upper management approval.
- Archive all reports and records onto QA-Warranty's Share Drive.

RFS Instruction Department Activities

October 2011

Training classes completed during the month of October 2011

Description	Course Hours	Student Count	Training Hours
<u>Blue & Expo Line Training - (P865/2020 & P2000 LRV):</u>			
RFS SIEMENS 2000 LIGHTS & DEST SIGN	16	5	80
RFS SIEMENS 2000 AUX. INVERTER	32	5	160
RFS SIEMENS 2000 CARBODY	24	5	120
RFS SIEMENS 2000 VEHICLE SYSTEMS	48	5	240
Total Blue Line Training (Hours):			600
<u>Green Line Training (P2000 LRVs):</u>			
RFS SIEMENS 2000 LIGHTS & DEST SIGN	16	1	16
RFS SIEMENS 2000 AUX. INVERTER	32	1	32
RFS SIEMENS 2000 CARBODY	24	1	24
RFS SIEMENS 2000 VEHICLE SYSTEMS	48	1	48
RFS SIMMONS WHEEL PRESS	24	2	48
Total Green Line Training (Hours):			168
<u>Gold Line Training (P2550 LRVs):</u>			
RFS ANSALDOBREDA 2550 A.T.P. & T.W.C.	32	5	160
RFS ANSALDOBREDA 2550 COMMUNICATIONS	24	3	72
RFS ANSALDOBREDA 2550 INTEGRATED DISPLAY	24	4	96
RFS ANSALDOBREDA 2550 APS\LVPS\BATTERY	24	3	72
Total Gold Line Training (Hours):			400
<u>Total RFS Instruction for the month of October 2011 (Hours):</u>			1,168.0

Other Instruction Activities

PM Review and Goals for the A650 fleet 270

Total Other Instruction Activities **270.0**

Core Vehicle Training Completed: **BLUE** **RED** **GREEN** **GOLD**

Percentage of core vehicle training complete:	86.1%	99.5%	90.8%	84.2%
Siemens P2000 training complete:	34.8%	N/A	N/A	N/A

Average Specialist Rail Experience Level in Years: **11.4** **10.2** **8.8** **9.7**

Core Training Completed

