



Rail Fleet Services Monthly Report September 2011

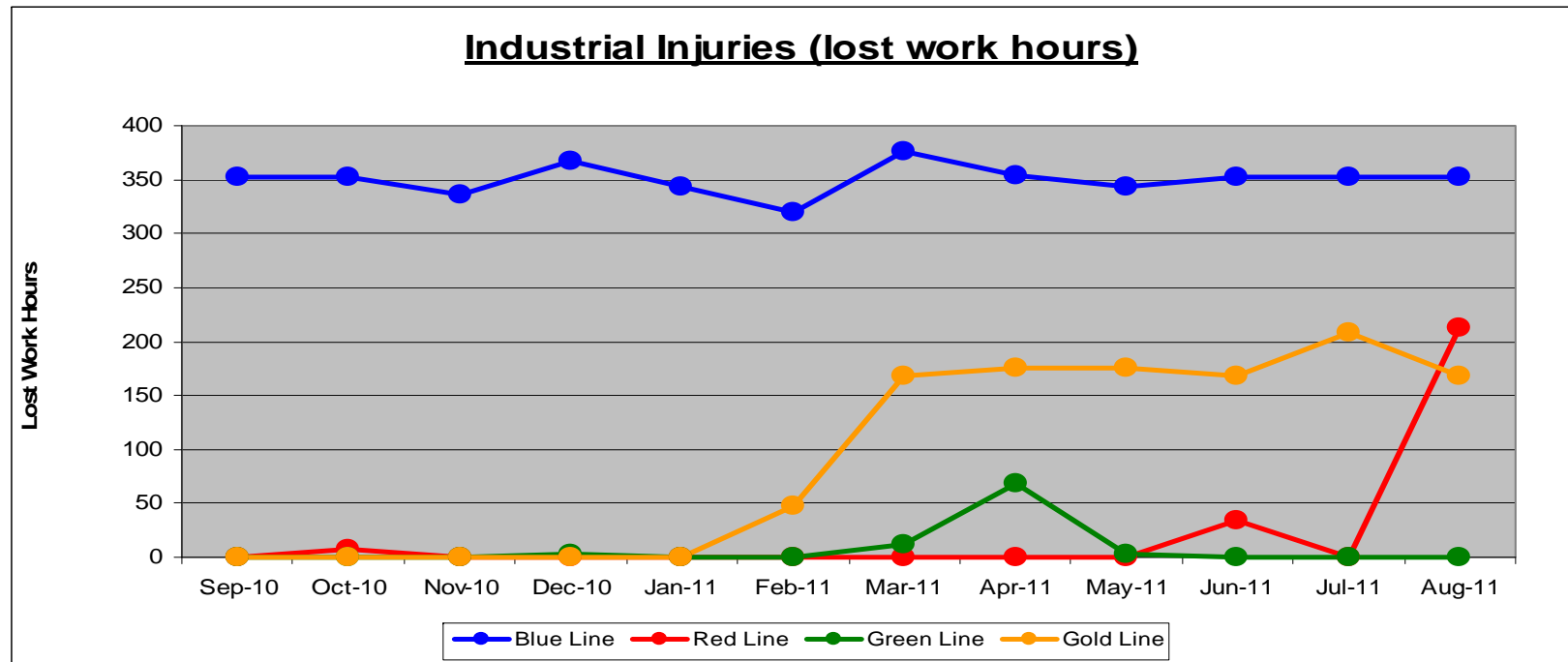


Metro

Table of Contents

•	Safety	
	- Industrial Injuries	Page 3
	- Rail Vehicle Accidents & Major Incidents	Page 4
•	Customer Service	
	- Service Delivery – AM/PM Pull-Outs	Page 5
	- Vehicle Utilization – Blue Line & Green Line	Page 6
	- Vehicle Utilization – Red Line & Gold Line	Page 7
	- Mean Miles Between Failures (Major)	Page 8
	- Repeat Failures	Page 9
•	Business Processes	
	- Major Incidents	Page 10
	- Preventive Maintenance Compliance	Page 11
•	Finance	
	- Vandalism & Graffiti Costs	Page 12
	- Graffiti Pictures	Page 13
	- Material & Labor Costs	Page 14
	- Cost per mile	Page 15
	- Absence vs. Overtime	Page 16
•	Engineering	
	- Rail Vehicle Engineering Project Summary	Page 17
	- P2550 Vehicle Acceptance Program	Page 18
•	Quality Assurance	
	- Warranty Program Projects Summary	Page 19
•	Growth	
	- RFS Instruction Department Activities	Page 20

Industrial Injuries – Lost Work Hours September 2011



	Employees		September 2011 Lost Work Hours			
	Assigned	Active	Service Attendant	Maint. Specialist	Body Repairer /Painter	Total Hrs.
Blue Line	112	104	0	168	184	352
Red Line	105	100	136	77	0	213
Green Line	48	45	0	0	0	0
Gold Line	50	47	168	0	0	168
Eng/QA/Admin	25	25	0	0	0	0
Totals	340	321	304	245	184	733

Rail Vehicle Accidents & Major Incidents

September 2011

Repair Costs	Oct-10	Nov-10	Dec-10	Jan-11	Feb-11	Mar-11	Apr-11	May-11	Jun-11	Jul-11	Aug-11	Sep-11	Totals
Blue Line	\$4,781	\$10,716	\$16,938	\$961	\$2,114	\$684	\$26,990	\$4,844	\$189	\$0	\$395	\$7,337	\$75,949
Red Line	\$0	\$0	\$562	\$0	\$0	\$0	\$0	\$0	\$0	\$0	\$0	\$0	\$562
Green Line	\$0	\$0	\$0	\$0	\$0	\$0	\$0	\$0	\$0	\$0	\$0	\$0	\$0
Gold Line	\$4,286	\$3,016	\$1,374	\$239	\$13	\$4,031	\$0	\$0	\$5,458	\$3,763	\$2,567	\$0	\$24,747
Totals	\$9,067	\$13,732	\$18,874	\$1,200	\$2,127	\$4,715	\$26,990	\$4,844	\$5,647	\$3,763	\$2,962	\$7,337	\$101,258

Rail Vehicle Accident Costs - September 2011				
Metro Blue Main Line				
Date	Incident #	Problem code	Incident Description	Cost
9/5/2011	2051387	Train vs. Vehicle	10-73 Southbound at Flower and Venice. Train 10 (T-115), 104a - 116.	\$6,918.00
9/24/2011	2063848	Train vs. Pedestrian	10-72 Southbound at Artesia pedestrian crossing. Operator lowered pantographs, T-129, Train 6, LRV (133B) 137-108.	\$419.00
			GRAND TOTAL	\$7,337.00
(10-71) = Train vs. Object, (10-72) = Train vs. Pedestrian, (10-73) = Train vs. Vehicle (10-74) = Train vs. MTA Vehicle, (10-75) = Derailment				

Service Delivery September 2011

Blue Line – Fleet Size 69 cars

<u>Pull Out</u>	<u>Vehicles Required</u>	<u>Average Available</u>	<u>% Up (Down)</u>
Weekday:	60	62	103%
Weekend:	36	42	117%

Late Pullouts: 0 *

Monthly Mileage: 405,728 miles

Expo Line – Fleet Size 21 cars

Expo Revenue Operations Date (ROD) to be determined.

Red Line - Fleet Size 104 cars

<u>Pull Out</u>	<u>Vehicles Required</u>	<u>Average Available</u>	<u>% Up (Down)</u>
Weekday:	70	83	119%
Weekend:	48	72	150%

Late Pullouts: 0 *

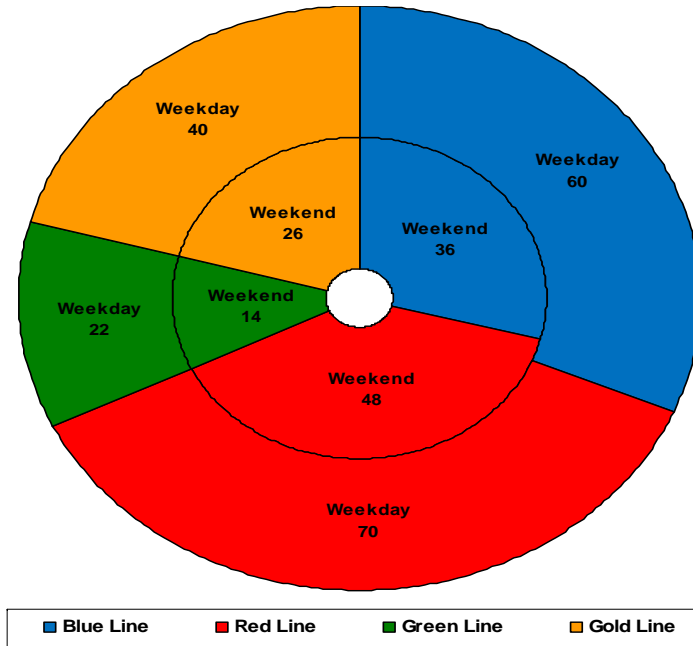
Monthly Mileage: 552,562 miles

Green Line – Fleet Size 29 cars

<u>Pull Out</u>	<u>Vehicles Required</u>	<u>Average Available</u>	<u>% Up (Down)</u>
Weekday:	22	24	109%
Weekend:	14	20	143%

Late Pullouts: 0 *

Monthly Mileage: 221,101 miles



Gold Line – Fleet Size 49 cars

P2550 – Fleet Size 47 cars

P2000 – Fleet Size 2 cars

<u>Pull Out</u>	<u>Vehicles Required</u>	<u>Average Available</u>	<u>% Up (Down)</u>
Weekday:	40	41	103%
Weekend:	26	39	150%

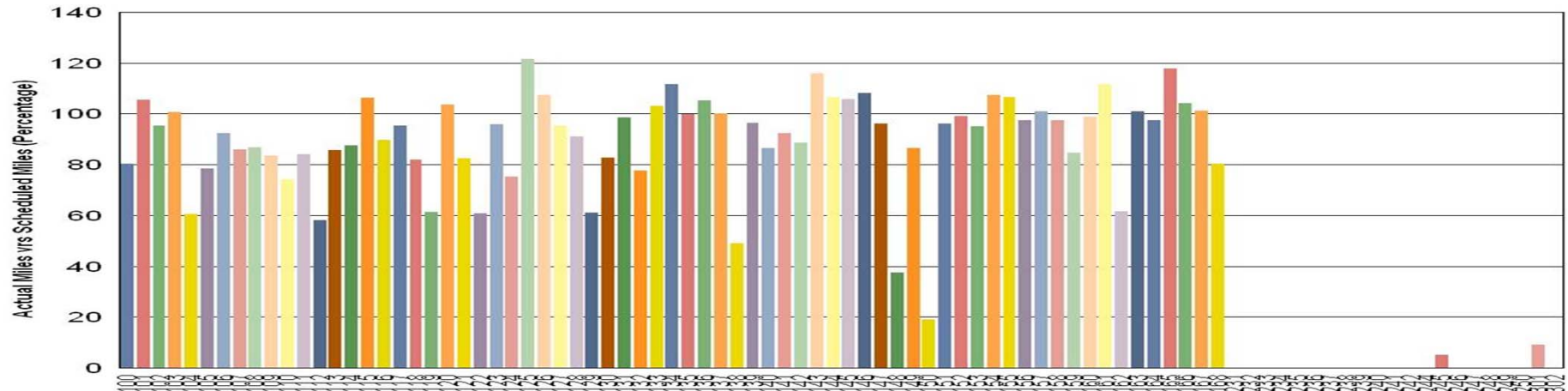
Late Pullouts: 0 *

Monthly Mileage: 275,056 miles

* Due to a vehicle related problem

Vehicle Utilization September 2011

Metro Blue/Expo Line Fleet



Blue Line:

- 148 Out of service for HVAC overhaul and other repairs.
- 150 Out of service for repeated propulsion faults.

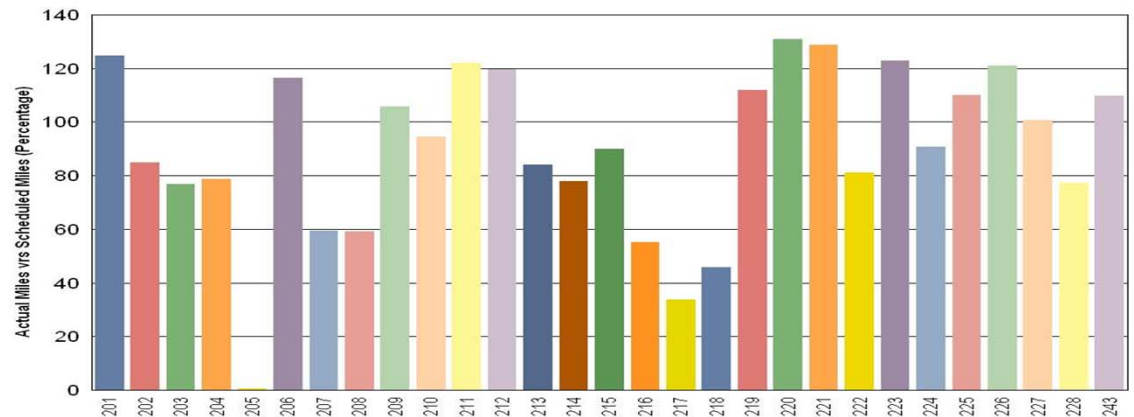
Expo Line:

- 231-302 The entire EXPO fleet (15 cars) are not in revenue service at this time. Mileage will be minimal each month until the Expo Line opens.

Green Line:

- 205 Out of service due to multiple system problems. Repairs implemented and vehicle put back into service.
- 217 Out of service due to a wheel flat. Repairs implemented and vehicle put back into service.

Metro Green Line

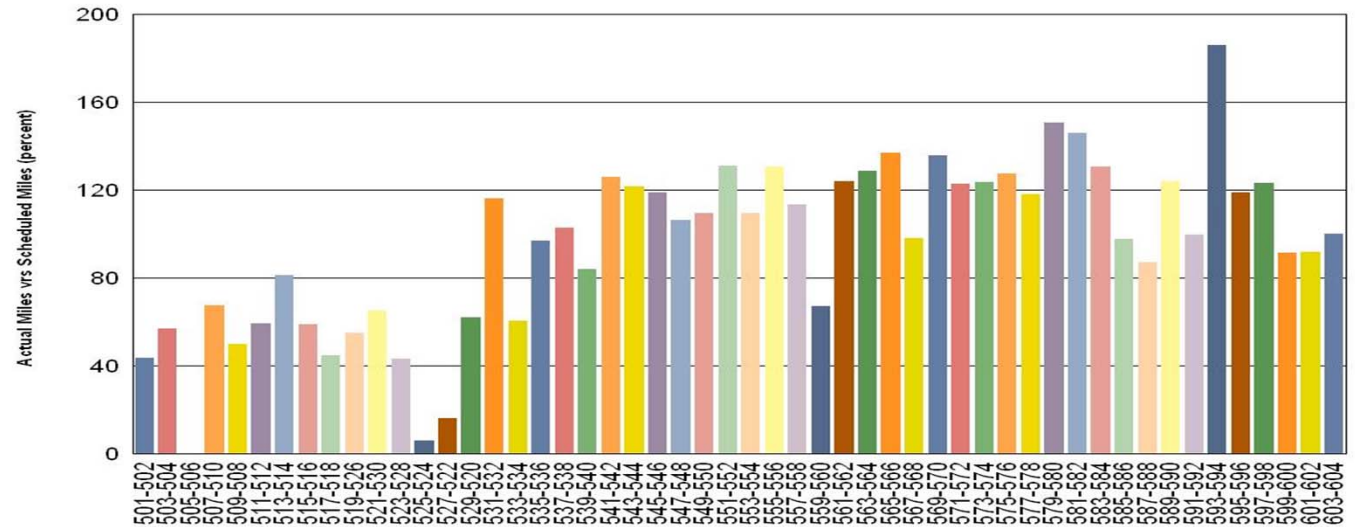


Vehicle Utilization September 2011

Red Line: Explanation for under-used vehicles:

- 505-506 Long term rebuild program
- 525-524 Propulsion faults
- 527-522 Propulsion faults

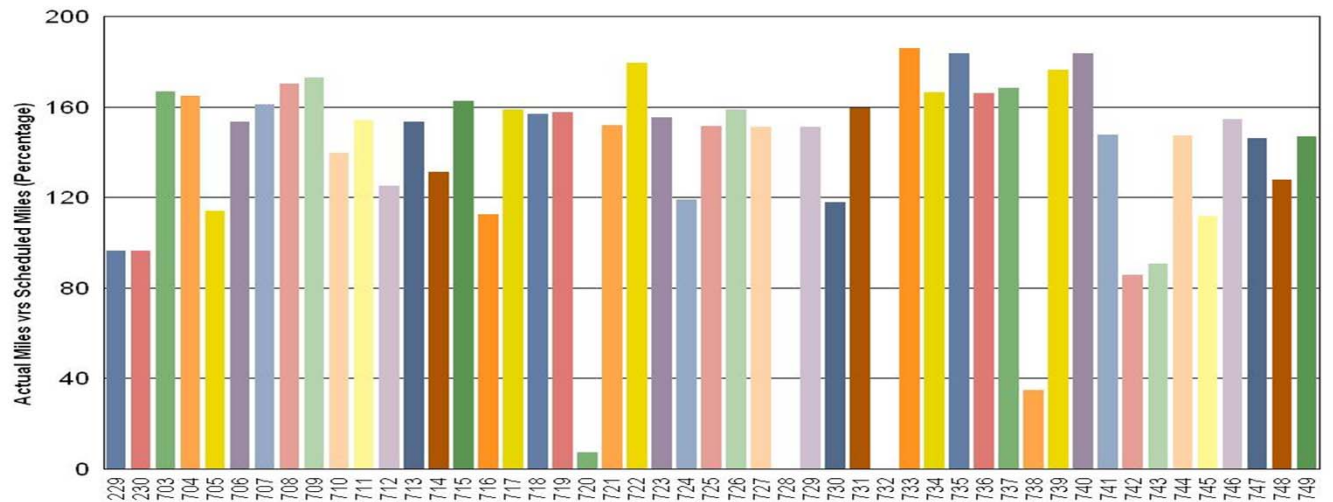
Metro Red Line



Gold Line:

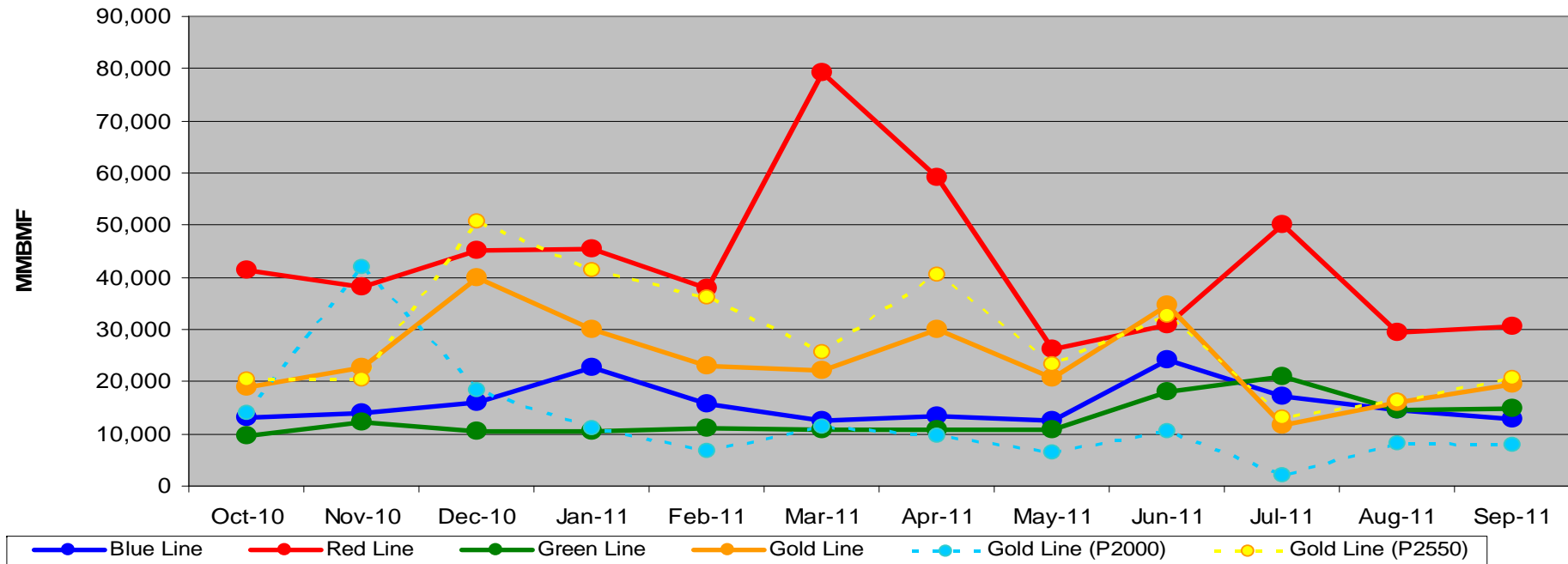
- 720 Defective decelerometer with no current replacement part available.
- 728 Out of service due to yard derailment. Repairs were started on 8/26/11.
- 732 Communication software problem. Contractor is scheduled to reprogram system.
- 738 Low voltage power supply fault. Vehicle scheduled to return to service in October.

Metro Gold Line



Mean Miles Between Failures (Major) Year to Date

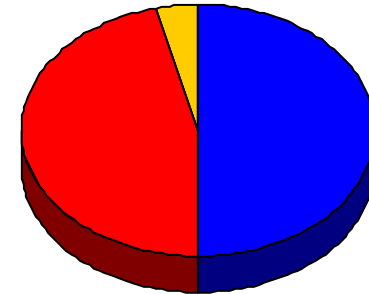
Mean Miles Between Major Failures (11-months)



	Oct-10	Nov-10	Dec-10	Jan-11	Feb-11	Mar-11	Apr-11	May-11	Jun-11	Jul-11	Aug-11	Sep-11
Blue Line	13,065	13,936	16,095	22,749	15,601	12,500	13,483	12,557	24,050	17,123	14,425	12,679
Red Line	41,239	38,293	45,211	45,357	37,732	79,178	59,089	26,084	30,932	50,099	29,298	30,698
Green Line	9,527	12,173	10,575	10,535	11,163	10,687	10,787	10,882	18,177	20,877	14,482	14,740
Gold Line	18,887	22,664	39,858	30,095	23,095	22,044	30,145	20,776	34,792	11,668	15,906	19,647
Gold Line (P2000)	14,002	42,007	18,326	11,208	6,689	11,413	9,625	6,377	10,351	2,153	8,019	7,872
Gold Line (P2550)	20,515	20,515	50,625	41,426	36,220	25,588	40,404	23,394	32,767	13,095	16,370	20,553

Repeat Failures September 2011

Metro Blue Line: 13 Repeat Failures
Metro Red Line: 12 Repeat Failures
Metro Green Line: 0 Repeat Failures
Metro Gold Line: 1 Repeat Failures



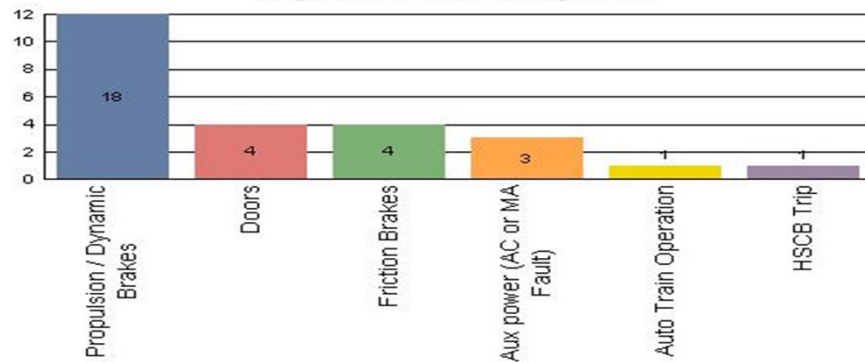
■ Blue Line
 ■ Red Line
 ■ Green Line
 ■ Gold Line

Repeater Car Details - September 2011								
System	Blue Line		Red Line		Green Line		Gold Line	
	Car #	Repeats	Car #	Repeats	Car #	Repeats	Car #	Repeats
Announcements	114	1						
Doors	131	2	515	1				
Friction Brakes			515	1				
HVAC	125	1	561	1			723	1
			574	1				
Propulsion/Dynamic Brake	119	1	509	2				
	121	7	511	1				
			522	1				
			533	3				
			554	1				
Truck/Wheel/Flats	142	1						
TOTALS	13		12		0		1	

Major Incidents September 2011

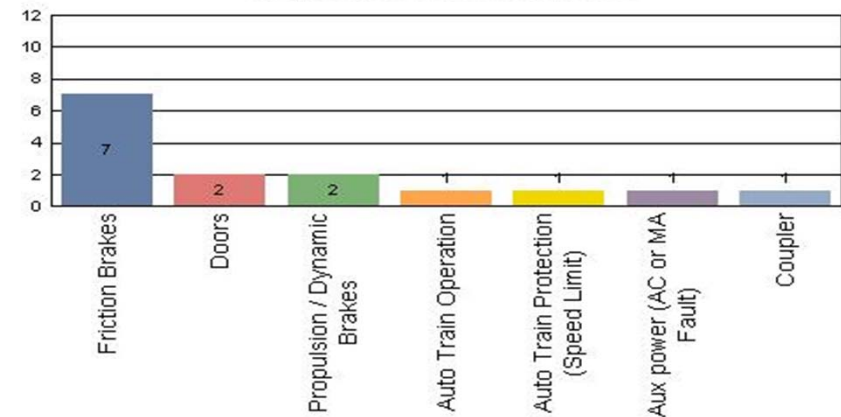
Metro Blue Line

Top Incident Categories



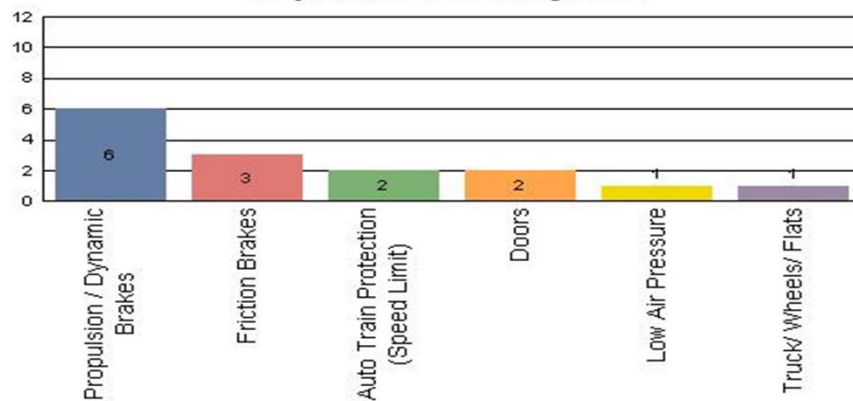
Metro Red Line

Top Incident Categories



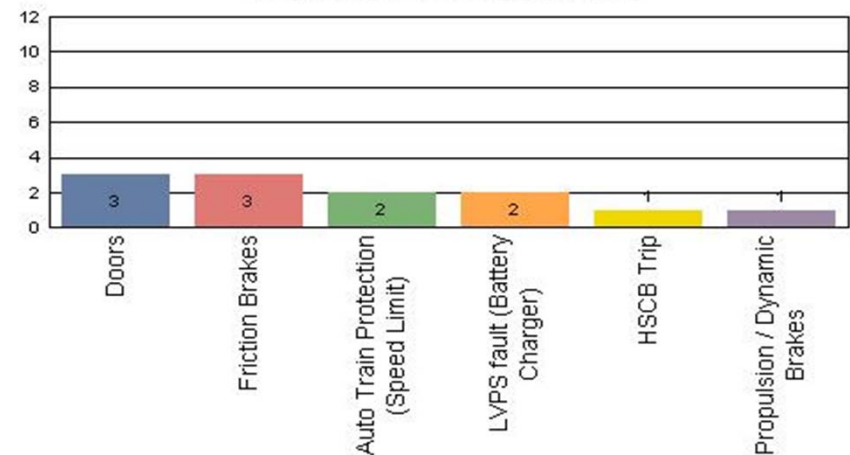
Metro Green Line

Top Incident Categories



Metro Gold Line

Top Incident Categories

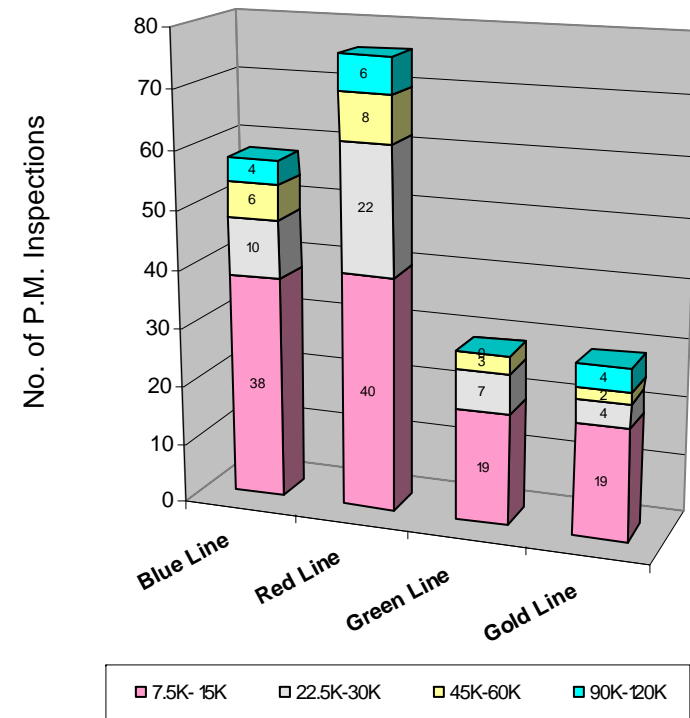


Preventive Maintenance Compliance September 2011

PM Compliance	Oct-10	Nov-10	Dec-10	Jan-11	Feb-11	Mar-11	Apr-11	May-11	Jun-11	Jul-11	Aug-11	Sep-11
Blue Line	100%	100%	100%	100%	100%	100%	100%	100%	100%	100%	100%	100%
Red Line	91%	97%	100%	100%	97%	100%	100%	90%	100%	100%	100%	100%
Green Line	100%	100%	100%	100%	100%	100%	100%	100%	100%	100%	100%	100%
Gold Line	100%	100%	100%	100%	100%	100%	100%	100%	100%	100%	100%	100%

September 2011 Preventive Maintenance Inspections

No. of P.M. Inspections	7.5K-15K	22.5K-30K	45K-60K	90K-120K	Totals
Blue Line	38	10	6	4	58
Red Line	40	22	8	6	76
Green Line	19	7	3	0	29
Gold Line	19	4	2	4	29
Totals:	116	43	19	14	192

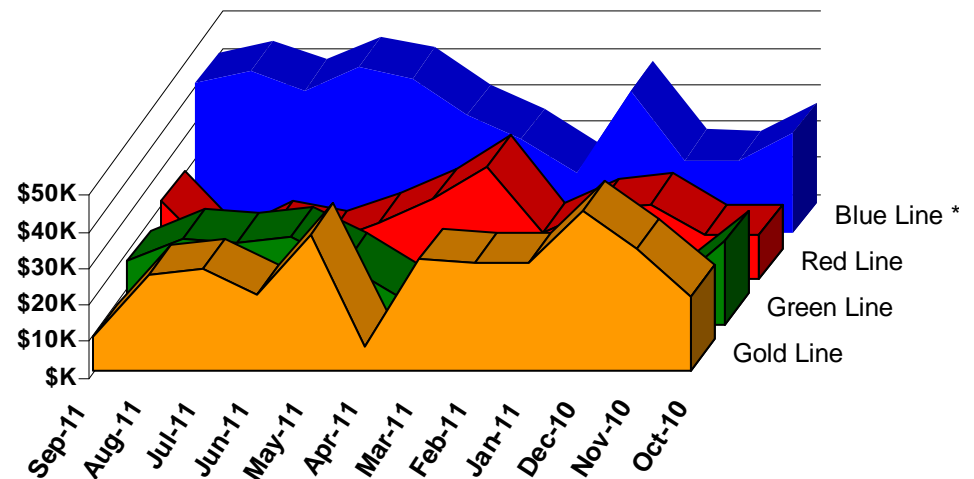


Vandalism & Graffiti Report

September 2011

	Oct-10	Nov-10	Dec-10	Jan-11	Feb-11	Mar-11	Apr-11	May-11	Jun-11	Jul-11	Aug-11	Sep-11	Year-to-Date
Blue Line *	\$27K	\$19K	\$20K	\$39K	\$16K	\$26K	\$32K	\$42K	\$45K	\$39K	\$44K	\$41K	\$391K
Red Line	\$12K	\$12K	\$20K	\$19K	\$12K	\$31K	\$22K	\$15K	\$10K	\$13K	\$6K	\$21K	\$192K
Green Line	\$23K	\$10K	\$23K	\$7K	\$15K	\$7K	\$8K	\$16K	\$24K	\$22K	\$23K	\$17K	\$197K
Gold Line	\$20K	\$33K	\$44K	\$29K	\$29K	\$31K	\$7K	\$37K	\$21K	\$28K	\$26K	\$9K	\$314K
Totals:	\$82K	\$75K	\$107K	\$94K	\$73K	\$94K	\$68K	\$111K	\$100K	\$102K	\$99K	\$89K	\$1,095K

September 2011 Vandalism & Graffiti - All Rail				
	Qty	Labor	Materials	Totals
Windows replaced	12	\$4,914	\$3,262	\$8,176
Vandal Shields	399	\$10,889	\$3,577	\$14,466
Seats Cleaned	790	\$2,192	\$0	\$2,192
Seats Replaced	259	\$8,159	\$6,461	\$14,620
Graffiti removal - other	786	\$11,279	\$702	\$11,981
Repainting panels	3	\$32,261	\$5,241	\$37,502
Totals for September 2011	2,249	\$69,694	\$19,243	\$88,937



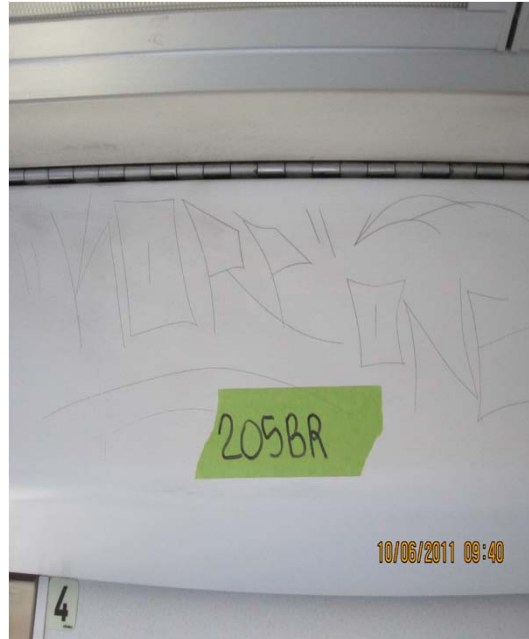
* Blue Line totals include vandalism & graffiti removal from the P2000 cars that will soon be used on the Expo Line.

Graffiti Pictures September 2011

Blue Line



Green Line



Gold Line

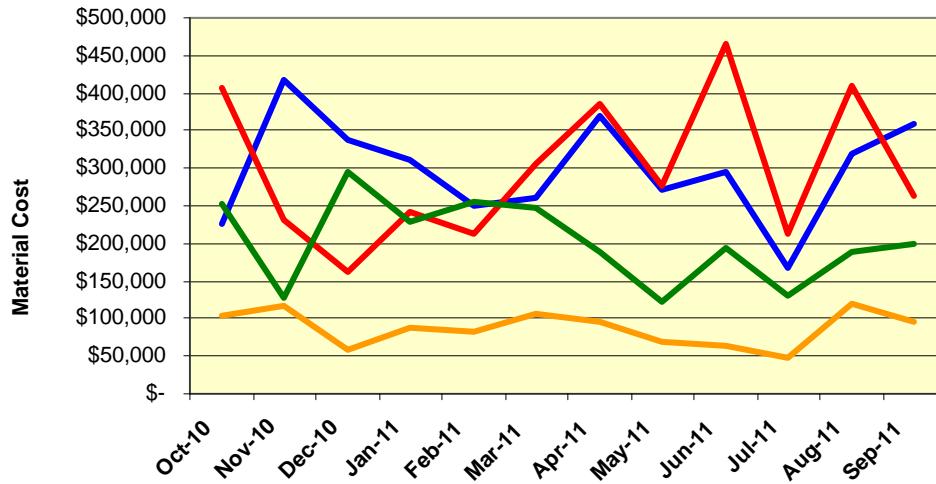


Material and Labor Costs

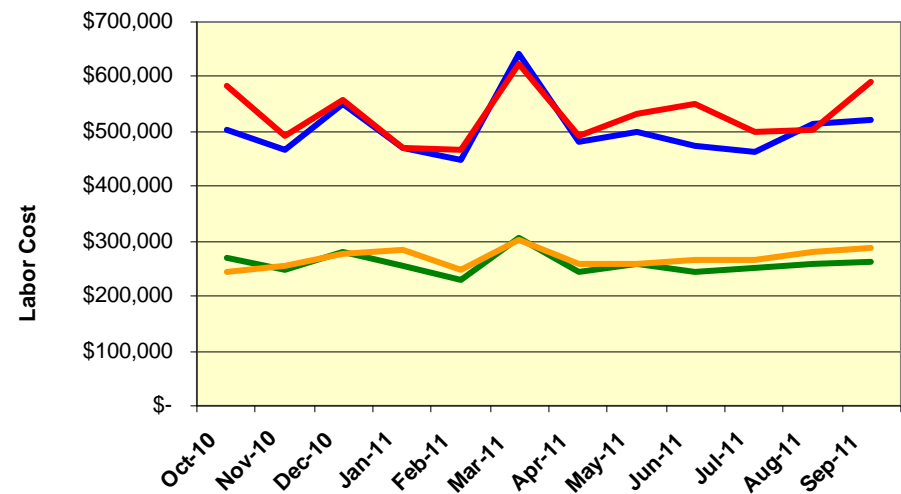
September 2011

MATERIALS	Oct-10	Nov-10	Dec-10	Jan-11	Feb-11	Mar-11	Apr-11	May-11	Jun-11	Jul-11	Aug-11	Sep-11
Blue Line	\$ 225,412	\$ 416,656	\$ 337,959	\$ 311,345	\$ 249,678	\$ 259,887	\$ 368,467	\$ 272,272	\$ 294,179	\$ 167,328	\$ 318,296	\$ 359,508
Red Line	\$ 406,465	\$ 230,298	\$ 162,960	\$ 240,990	\$ 213,323	\$ 305,345	\$ 386,455	\$ 277,113	\$ 466,346	\$ 212,074	\$ 410,299	\$ 263,808
Green Line	\$ 253,619	\$ 128,574	\$ 295,924	\$ 228,636	\$ 255,578	\$ 247,907	\$ 189,460	\$ 121,859	\$ 194,750	\$ 129,976	\$ 187,997	\$ 198,811
Gold Line	\$ 104,711	\$ 117,573	\$ 58,796	\$ 86,984	\$ 82,141	\$ 105,452	\$ 96,824	\$ 67,967	\$ 64,397	\$ 47,760	\$ 118,401	\$ 94,967
Totals	\$ 990,206	\$ 893,102	\$ 855,640	\$ 867,955	\$ 800,720	\$ 918,591	\$ 1,041,206	\$ 739,212	\$ 1,019,672	\$ 557,138	\$ 1,034,993	\$ 917,095

Material Costs



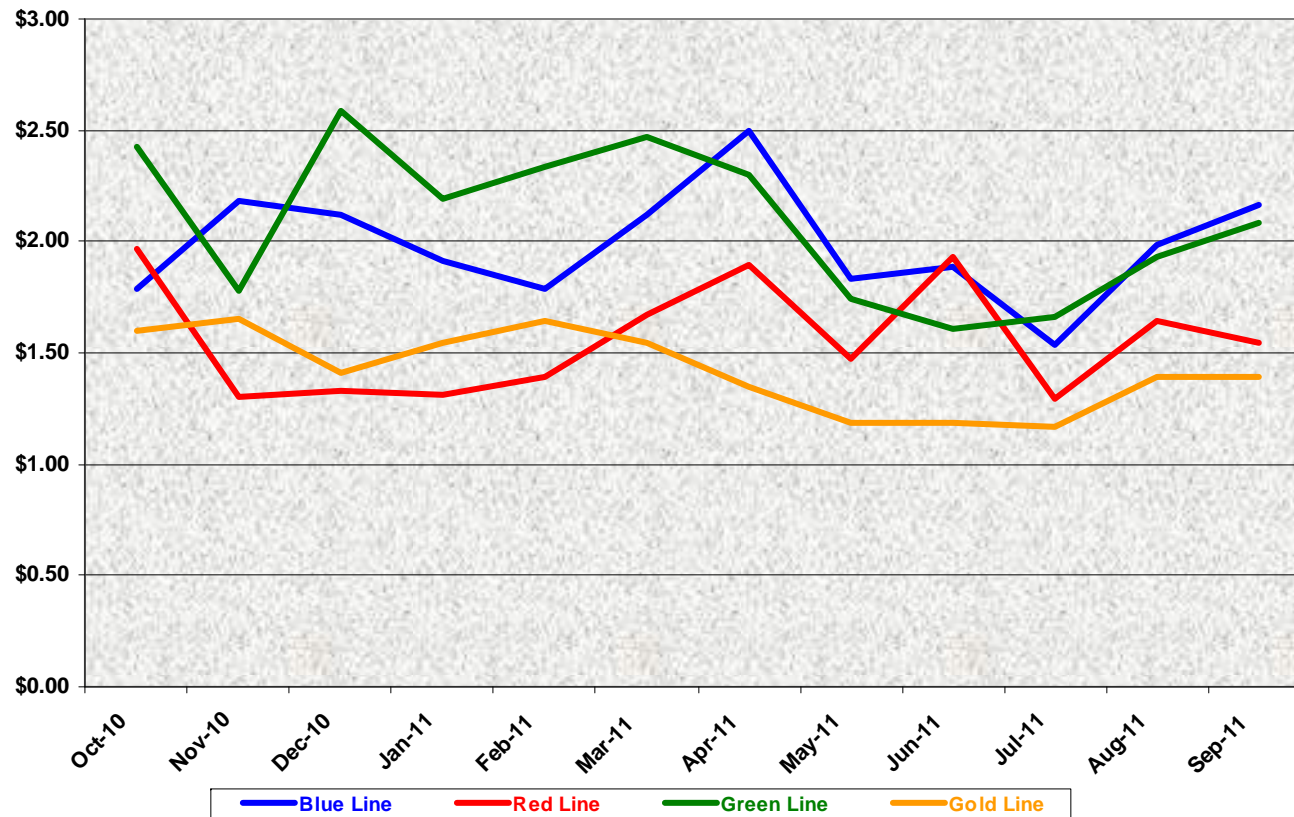
Labor Costs



LABOR	Oct-10	Nov-10	Dec-10	Jan-11	Feb-11	Mar-11	Apr-11	May-11	Jun-11	Jul-11	Aug-11	Sep-11
Blue Line	\$ 504,876	\$ 466,805	\$ 549,827	\$ 470,555	\$ 447,928	\$ 642,540	\$ 480,658	\$ 500,263	\$ 475,354	\$ 464,468	\$ 513,406	\$ 520,526
Red Line	\$ 581,709	\$ 491,124	\$ 556,636	\$ 472,105	\$ 467,849	\$ 622,201	\$ 493,104	\$ 531,171	\$ 550,464	\$ 500,504	\$ 504,785	\$ 589,986
Green Line	\$ 269,647	\$ 249,736	\$ 279,447	\$ 255,429	\$ 230,329	\$ 305,821	\$ 244,809	\$ 257,678	\$ 243,969	\$ 250,617	\$ 259,629	\$ 261,796
Gold Line	\$ 245,423	\$ 255,054	\$ 278,165	\$ 285,821	\$ 248,537	\$ 303,998	\$ 259,784	\$ 257,114	\$ 264,854	\$ 265,256	\$ 280,715	\$ 289,048
Totals	\$ 1,601,654	\$ 1,462,719	\$ 1,664,075	\$ 1,483,910	\$ 1,394,643	\$ 1,874,560	\$ 1,478,355	\$ 1,546,225	\$ 1,534,641	\$ 1,480,845	\$ 1,558,535	\$ 1,661,357

Cost Per Mile September 2011

Nov-10	Dec-10	Jan-11	Feb-11	Mar-11	Apr-11	May-11	Jun-11	Jul-11	Aug-11	Sep-11	Average
\$2.18	\$2.12	\$1.91	\$1.79	\$2.12	\$2.50	\$1.83	\$1.88	\$1.54	\$1.99	\$2.17	\$1.98
\$1.30	\$1.33	\$1.31	\$1.39	\$1.67	\$1.90	\$1.48	\$1.93	\$1.29	\$1.64	\$1.55	\$1.56
\$1.78	\$2.59	\$2.19	\$2.34	\$2.47	\$2.30	\$1.74	\$1.61	\$1.66	\$1.93	\$2.08	\$2.09
\$1.65	\$1.41	\$1.55	\$1.65	\$1.55	\$1.35	\$1.18	\$1.18	\$1.17	\$1.39	\$1.40	\$1.42



No facility costs are included

Absences vs. Overtime

September 2011

ABSENCE TYPE and HOURS	3940	3941	3942	3943	3944	Total
AWP-ABSENT W/O PERMISSION	0.00	0.00	0.00	0.00	0.00	0.00
BER-BEREAVEMENT	0.00	64.00	0.00	0.00	0.00	64.00
CTO-COMPENSATORY TIME OFF	0.00	170.00	220.00	104.00	58.00	552.00
CVA - CASUAL VACATION	0.00	675.50	494.35	0.00	133.00	1,302.85
DRN-DR. APPOINTMENT 48 HR	2.00	0.00	0.00	0.00	0.00	2.00
EFH-EMG. FLOAT HOL.	0.00	16.00	60.00	24.00	64.00	164.00
ETO-EXCUSED TIME OFF	3.50	61.50	11.52	5.50	30.08	112.10
FML-FAMILY CARE LEAVE	24.00	1,016.00	320.80	202.12	64.00	1,626.92
HLF-HOLIDAY FLOATING	16.00	288.00	336.00	128.00	104.00	872.00
HLP-HOLIDAY NOT PAID	0.00	0.00	16.00	16.00	0.00	32.00
HOL-HOLIDAY LEGAL	88.00	496.00	480.00	104.00	128.00	1,296.00
II-INDUSTRIAL INJURY	0.00	216.00	224.00	0.00	0.00	440.00
JUR-JURY DUTY	0.00	8.00	128.00	0.00	0.00	136.00
LC1-LABOR CODE 233	40.00	136.00	96.52	24.00	88.00	384.52
LTI-OCCPIL/LONGTRM INJ LEAVE	0.00	152.00	0.00	0.00	72.00	224.00
MLN-MILITARY ABSENCE-UNPAID	0.00	0.00	176.00	0.00	0.00	176.00
RTO-REQUESTED TIME OFF-NO PAY	0.00	56.00	8.00	0.00	8.00	72.00
SCK-SICK PAY	16.00	152.00	64.00	24.00	80.00	336.00
SCW-SICK WITHOUT PAY	0.00	0.00	0.00	96.00	120.00	216.00
VAC-VACATION	144.00	304.00	696.00	373.00	360.00	1,877.00
Total Absence Hours	334	3,811	3,331	1,101	1,309	9,885
Number of Work Force (assigned)	28	113	105	47	51	344
Full Work Force hours/month	4,852	19,583	18,197	8,145	8,838	59,615
Absence as a % of Work Force	7%	19%	18%	14%	15%	17%
OVERTIME TYPE and HOURS	3940	3941	3942	3943	3944	Total
CTB-COMPENSATORY TIME TO BANK	5	160	228	112	74	578
OTP-PREM OVERTIME	448	1478	2856	915	994	6691
WLO-Worked Lunch Overtime	1	26	102	62	69	259
Total	453	1664	3185	1088	1137	7527
Overtime as a % of Work Force	9%	8%	18%	13%	13%	13%
UNCOVERED ABSENCES	3940	3941	3942	3943	3944	Total
Absences FTE	2	22	19	6	8	57
OTP FTE	3	10	18	6	7	43
FTE Difference	-1	12	1	0	1	14

Rail Vehicle Engineering Project Summary

September 2011

Preparation of Engineering Technical Specifications	Tracking #	Status
Red Line AC Gear Box (Rev. 0)	A650/TS/026	Draft in Progress
P2000 Doors (Rev. 0)	P2000/TS/029	Draft in Progress
Articulation Bellow	P865-P2020/TS/XX	Draft Under Metro Review
Powered Axle Overhaul SOW	P2000 SOW	Draft in Progress
Vital Relay Calibration	P865/P2020/TS/061	In Revising Process
DC Air Compressor Motor Overhaul	P865/P2020-TS-057	Released
Center Truck Friction Brake Disc	P2000-TS-020 rev. 01	Released
General - All Lines		Status
1. Roadway Worker Protection		CPUC/Installing ProTran1 Device on All Fleets
P2000 Overhaul Program		Status
Master Controller - Bombardier Refurbish		Ongoing Program
Car 243 Repair		Car acceptance was completed and running in revenue service
Slewing Ring		Developing Overhaul Procedures
Traction Motor Overhaul Bid		Solicitation completed - Bid goes to Swiger Coil - Board Approved
New LED Destination Signs		Luminator Prototype In-Service on Train Under 6 month Evaluation
Disable Automatic Sanding ckt		Fleet Modification completed.
P865/P2020 Program		Status
5k vs 7.5K Preventative Maintenance Evaluation		Investigation in-process
Cobra Brake Pad Testing		Completed AW0 test.
Static Inverter - Transtechnik		Car 119 Prototype and Testing
EMI On CB1 Tripping		Investigation in-process
Traction Motor Overhaul		Solicitation completed - Bid goes to Dahl-Beck Electric - Board Approved
		Inverter shipped to Transtechnik for upgrade
P3010		Status
78 New Light Rail Vehicle		Solicitation is in progress.
P2000 Gold to Green		Status
Signal Package Conversion (Gold to Green Ln)		On-Hold
A650 Overhaul Program		Status
Midlife Overhaul Specification		Specification Complete. Preparing Industry Review.
Car 591/592		Propulsion Investigation complete
HPT Upgrade		Wabtec Proposal in review by Metro
AB New Traction Motor Mount		Prototype was accepted. Working with AB for Fleet Modification.
Roll-Back Speed Sensor System		EB Reset Investigation
Friction Brake Kit Overhaul		Solicitation completed - Bid goes to Wabtec - Board Approved
Hand Rail - Bike Area		Prototype approved - Procurement buying parts for fleet modification
Ribbed Rubber Flooring PRF		Dealing with OEM and other sources
P2550		Status
Vehicle Acceptance		Forty-eight cars have been Conditionally Accepted. Awaiting shipment of cars 701 & 702.
Bike Space		Modified Car 710 as Prototype, ADA approval is complete, awaiting for final plan and signage by Metro-Marketing and bike committee.
Expo		Status
Readiness		Metro-RFS Engineering is supporting qualification and test activities of vehicles and wayside.

P2550 Vehicle Acceptance Program

September 2011

Vehicle Status Update:

- Metro has received 48 cars with 48 being conditionally accepted and 29 being final accepted.
- Two prototype cars remain at contractor's assembly site in Pittsburg and are being updated to the latest configuration.

Engineering Activities Update:

- Event recorder: Configuration continues to be finalized; however, on-site support from contractor and supplier is required to resolve final technical issues. Supplier is scheduled to be on-site in October to provide support.
- ATP/TWC Board Failures: Supplier developed new software to address issues with the multifunction PCB. Field testing was performed in August 2011. As a result, the software changes, replacing the "bad" boards, are now working. Contractor is continuing its investigation on the remaining failures.
- Decelerometer Failures: Supplier is currently qualifying replacement decelerometers to replace those on the fleet.

Production Car Status – Pittsburg:

- Cars 701& 702 - Reconfiguration of cars is in process with rewiring and repining of cables at 100% complete. Cars are scheduled to ship to Los Angeles by December 2011.

Project Management:

- Contract spares continue to be delivered to Metro and estimated to be 85% complete. All parts needed for day-to-day maintenance have been received. Critical parts needed for heavy repairs are scheduled to begin arriving in October 2011.
- Daily and bi-weekly meetings are scheduled with contractor management to address project issues.

QA-Warranty Program Projects Summary

September 2011

QA-WARRANTY ACTIVITIES

- Oil Analysis SOW / specification, 2-year contract sent to procurement for RFQ.
- Equipment Records Specialist Manpower: Two FTE's filled (1) MBL & (1) MGL.
- Audits to Date: MRL (5), MBL (5), MGL (5), MGD (8), Vendors (4): Y2011 total = 27
- P2550 Car Modification Campaign & testing oversight – Ongoing.
- P2550 (Metro/ABI): Warranty meetings, tracking trends, parts reimbursement & warranty material review – Ongoing.
- A650 Base Buy & Option car fleet warranty – Truck Frame Modification Campaign (20 trucks modified to date). MRL Warranty Cost Avoidance savings for September was \$37,395.00.
- First Article Inspections (13) on major components – Ongoing.
- Provided Tech support to vendors and contractor for overhaul programs - Ongoing.
- Provided Tech support for Expo Line ATP/TWC Project. Support line testing is administered on propulsion system during off-peak hours – Ongoing.
- Video downloads (8 hours) – Information is needed for law enforcement and administration investigations.
- Rewrite Warranty Manual (2nd edition) - Pending upper management approval.
- Rewrite QA Manual (2nd edition) - Pending upper management approval.
- Archived all reports and records into QA-Warranty Share Drive – Ongoing.

RFS Instruction Department Activities

September 2011

Training classes completed during the month of September 2011

Description	Course Hours	Student Count	Training Hours
<u>Blue & Expo Line Training - (P865/2020 & P2000 LRV):</u>			
New Employee Introduction and Safety Training	80	3	240
New Employee Introduction and Safety Training	16	2	32
RFS SIEMENS 2000 VEHICLE SYSTEMS	40	6	240
Total Blue Line Training (Hours):			272
<u>Red Line Training (Breda A650 HRV):</u>			
FREON RECOVERY SYSTEMS	8	4	32
HVAC Best Practices Training	32	2	64
Total Red Line Training (Hours):			96
<u>Green Line Training (P2000 LRVs):</u>			
New Employee Introduction and Safety Training	16	1	16
Total Green Line Training (Hours):			16
<u>Gold Line Training (P2550 LRVs):</u>			
RFS ANSALDOBREDA 2550 PANTOGRAPH/HIGH VOLTAGE DIST.	12	3	36
RFS ANSALDOBREDA 2550 VEHICLE SYSTEMS	40	3	120
Total Gold Line Training (Hours):			36
<u>Total RFS Instruction for the month of September 2011 (Hours):</u>			<u>420.0</u>

Other Instruction Activities

P2550 Manual Review	80
A650 HVAC Procedure Documentation for Maintenance	20
A650 Base Buy Propulsion Assessment for Maintenance	48
A650 HVAC Best Practices Training and Development	40
<u>Total Other Instruction Activities</u>	<u>188.0</u>

Core Vehicle Training Completed: **BLUE** **RED** **GREEN** **GOLD**

Percentage of core vehicle training complete: **86.1%** **99.5%** **90.1%** **80.1%**

Siemens P2000 training complete: 33.9% N/A N/A N/A

Average Specialist Rail Experience Level in Years: 11.3 10.2 8.7 9.7

Core Training Completed

