



Rail Fleet Services Monthly Report August 2012

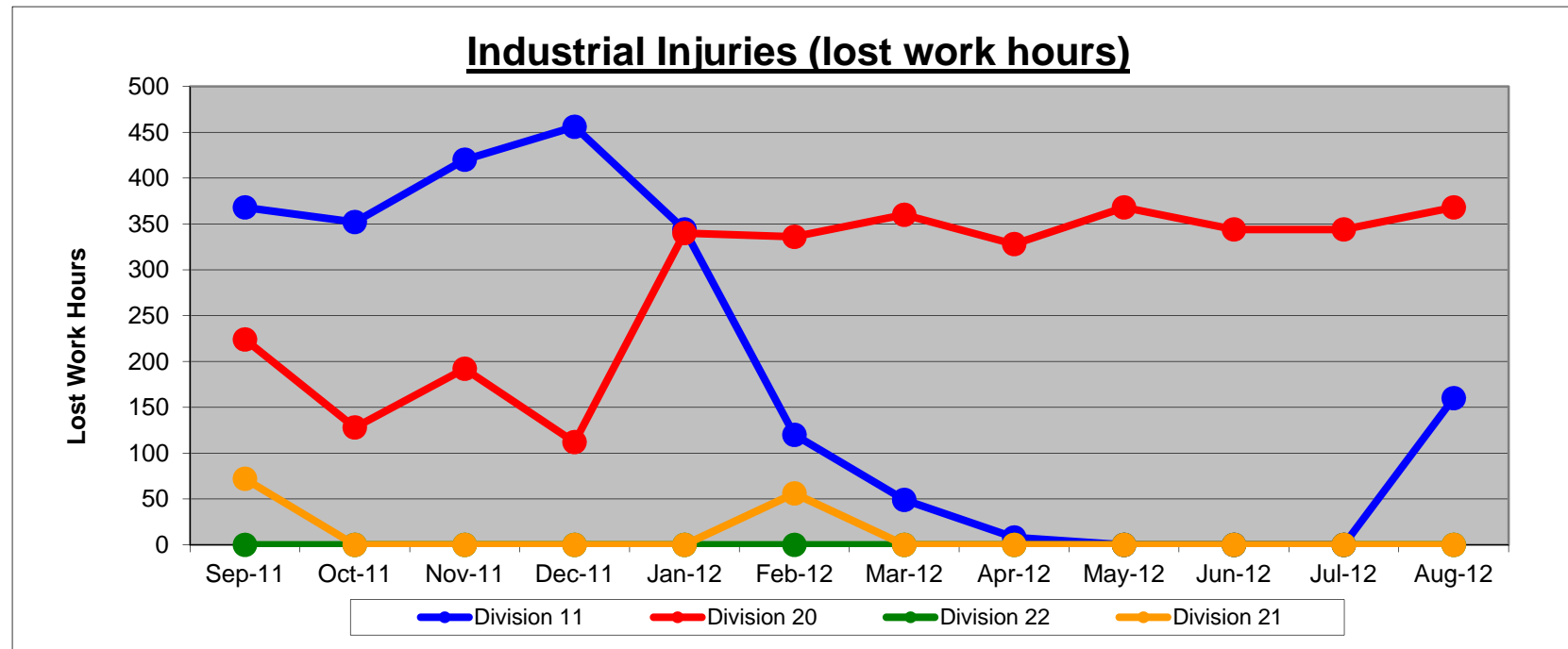


Metro

Table of Contents

•	Safety	
	- Industrial Injuries	Page 3
	- Rail Vehicle Accidents & Major Incidents	Page 4
•	Customer Service	
	- Service Delivery – AM/PM Pull-Outs	Page 5
	- Vehicle Utilization – Blue Line & Green Line	Page 6
	- Vehicle Utilization – Red Line & Gold Line	Page 7
	- Mean Miles Between Failures (Major)	Page 8
•	Business Processes	
	- Major Incidents	Page 9
	- Preventive Maintenance Compliance	Page 10
•	Finance	
	- Vandalism & Graffiti Costs	Page 11
	- Graffiti Pictures	Page 12
	- Material & Labor Costs	Page 13
	- Cost per mile	Page 14
	- Absence vs. Overtime	Page 15
•	Engineering	
	- Rail Vehicle Engineering Project Summary	Page 16
	- P2550 Vehicle Acceptance Program	Page 17
•	Quality Assurance	
	- Warranty Program Projects Summary	Page 18
•	Growth	
	- RFS Instruction Department Activities	Page 19

Industrial Injuries – Lost Work Hours August 2012



	Sep-11	Oct-11	Nov-11	Dec-11	Jan-12	Feb-12	Mar-12	Apr-12	May-12	Jun-12	Jul-12	Aug-12	Year to Date
Division 11	368	352	420	456	344	120	49	8	0	0	0	160	2,277
Division 20	224	128	192	112	340	336	360	328	368	344	344	368	3,444
Division 22	0	0	0	0	0	0	0	0	0	0	0	0	0
Division 21	72	0	0	0	0	56	0	0	0	0	0	0	128
Totals	664	480	612	568	684	512	409	336	368	344	344	528	5,849

Rail Vehicle Accidents & Major Incidents

August 2012

Repair Costs	Sep-11	Oct-11	Nov-11	Dec-11	Jan-12	Feb-12	Mar-12	Apr-12	May-12	Jun-12	Jul-12	Aug-12	Totals
Blue/Expo Line	\$7,337	\$888	\$16,188	\$1,199	\$4,704	\$5,087	\$18,570	\$2,675	\$1,718	\$1,186	\$674	\$8,226	\$68,452
Red/Purple Line	\$0	\$0	\$0	\$0	\$0	\$0	\$0	\$1,115	\$571	\$0	\$0	\$0	\$1,686
Green Line	\$0	\$0	\$0	\$0	\$0	\$0	\$0	\$989	\$0	\$0	\$120	\$0	\$1,109
Gold Line	\$0	\$320	\$0	\$0	\$0	\$0	\$4,134	\$0	\$0	\$752	\$0	\$1,583	\$6,789
Totals	\$7,337	\$1,208	\$16,188	\$1,199	\$4,704	\$5,087	\$22,704	\$4,779	\$2,289	\$1,938	\$794	\$9,809	\$78,036

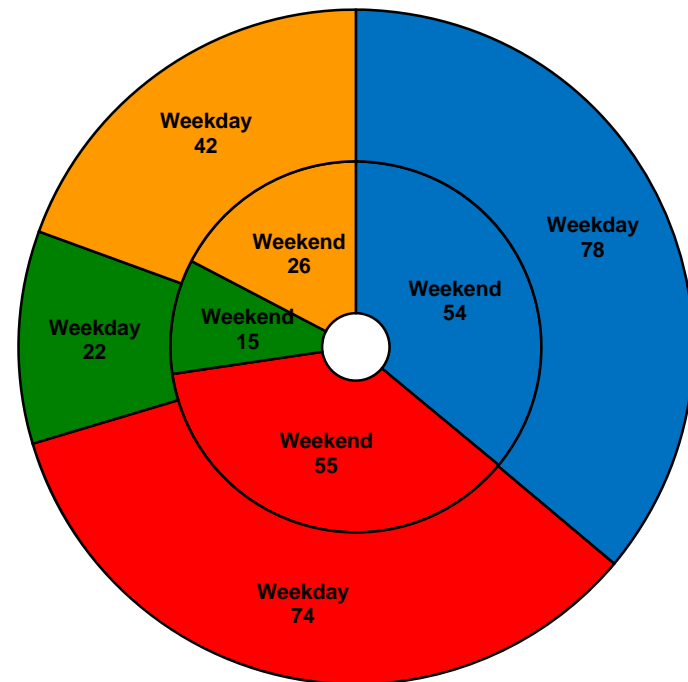
Rail Vehicle Accident Costs - August 2012				
Metro Blue Main Line				
Date	Incident #	Problem code	Incident Description	Cost
8/1/2012	2211444	Train vs. Vehicle	A 10-73 involving Train 25 was reported going northbound at Gage Street grade crossing.	\$1,926.00
8/6/2012	2213645	Train vs. Vehicle	A 10-73 involving Train 12 was reported at Pacific Coast Highway grade crossing on track 2.	\$1,210.00
8/6/2012	2213803	Train vs. Object	A 10-71 was reported when Train 2 made contact with rail equipment (metal bar) at Maple Interlocking Track.	\$0.00
8/22/2012	2220473	Train vs. Vehicle	A 10-73 was reported when Train 15 made contact with an auto going southbound at Washington and Main Street intersection.	\$2,040.00
8/27/2012	2222193	Train vs. Object	A 10-71 occurred when Train 6 operator reported incident with an MTA bus.	\$0.00
8/30/2012	2223983	Train vs. Vehicle	A 10-73 was reported on track 1 at Long Beach and 19th Street.	\$2,438.00
				7,614.00
Expo Line				
8/23/2012	2220932	Train vs. Pedestrian	A 10-73 was reported involving Train #5 at 30th and Flower.	\$612.00
				612.00
Metro Gold Line				
8/6/2012	2213507	Train vs. Object	A 10-71 was reported heading northbound involving a shopping cart at Pico Aliso Station on track 1.	\$484.00
8/6/2012	2213906	Train vs. Pedestrian	A 10-72 occurred at Mission Station involving Train 8 going northbound on track 1.	\$0.00
8/22/2012	2220371	Train vs. Vehicle	A 10-73 occurred with Train 7 at 3rd and La Verne on track 1.	\$1,099.00
				\$1,583.00
				GRAND TOTAL \$9,809.00
(10-71) = Train vs. Object, (10-72) = Train vs. Pedestrian, (10-73) = Train vs. Vehicle (10-74) = Train vs. MTA Vehicle, (10-75) = Derailment				



Metro

Service Delivery August 2012

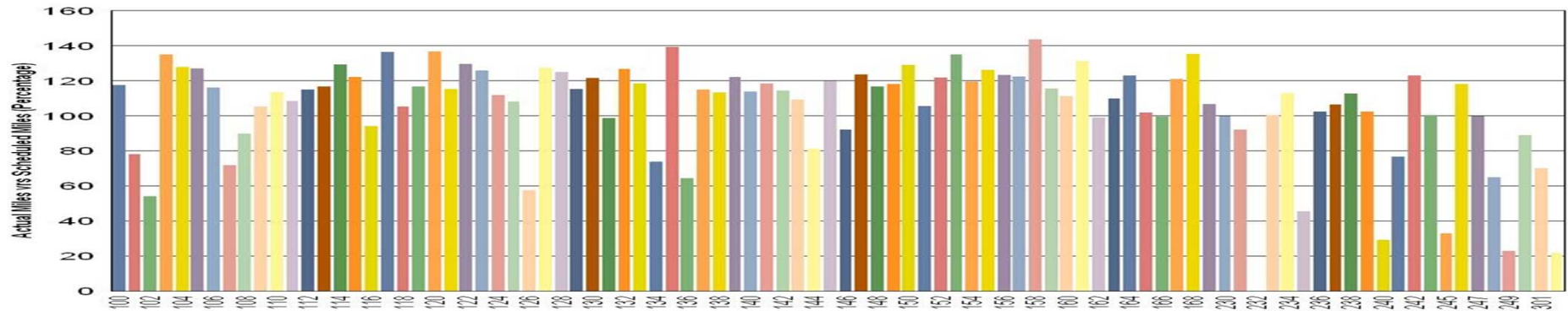
Blue/Expo Line Fleet Size: 92			
	<u>Vehicles</u>	<u>Average</u>	<u>% Up</u>
<u>Pull Out</u>	<u>Required</u>	<u>Available</u>	<u>(Down)</u>
Weekday:	78	79	101%
Weekend:	54	66	122%
Late Pullouts: 4 *			
Monthly Mileage: 636,460			
Red/Purple Line Fleet Size: 104			
	<u>Vehicles</u>	<u>Average</u>	<u>% Up</u>
<u>Pull Out</u>	<u>Required</u>	<u>Available</u>	<u>(Down)</u>
Weekday:	74	82	111%
Weekend:	55	77	140%
Late Pullouts: 0 *			
Monthly Mileage: 637,832			
Green Line Fleet Size: 29			
	<u>Vehicles</u>	<u>Average</u>	<u>% Up</u>
<u>Pull Out</u>	<u>Required</u>	<u>Available</u>	<u>(Down)</u>
Weekday:	22	24	108%
Weekend:	15	23	150%
Late Pullouts: 0 *			
Monthly Mileage: 238,736			
Gold Line Fleet Size: 49			
	<u>Vehicles</u>	<u>Average</u>	<u>% Up</u>
<u>Pull Out</u>	<u>Required</u>	<u>Available</u>	<u>(Down)</u>
Weekday:	42	43	102%
Weekend:	26	42	163%
Late Pullouts: 0 *			
Monthly Mileage: 304,637			



■ Blue/Expo Line
 ■ Red/Purple Line
 ■ Green Line
 ■ Gold Line

Vehicle Utilization August 2012

Metro Blue/Expo Line Fleet



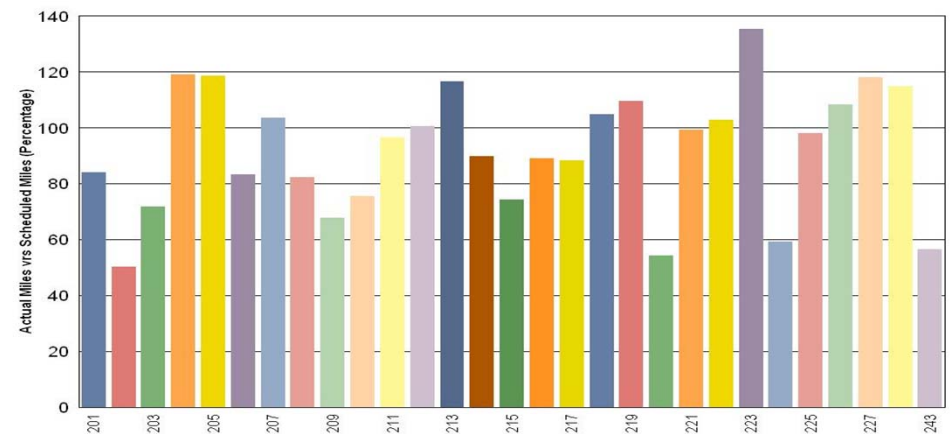
Blue/Expo Lines:

- 232 Vehicle assigned for training exercises.
- 240 Vehicle held for propulsion and HVAC problems.
- 245 Vehicle held down for ATP and car leveling problems.
- 249 Vehicle held down for propulsion and EMI problems.
- 302 Vehicle held for HVAC and auxiliary inverter problems.

Green Line:

The fleet has met the daily maximum utilization requirements for the month of August.

Metro Green Line



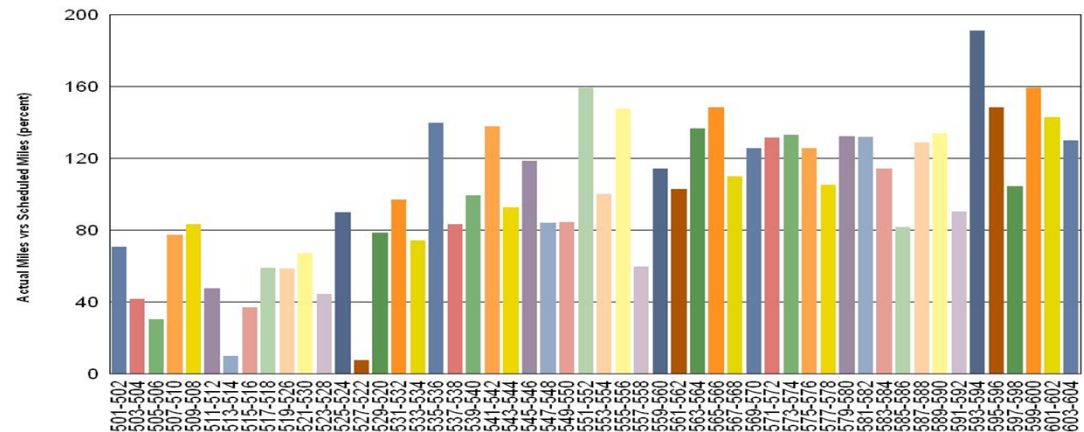
Vehicle Utilization August 2012

Red/Purple Lines:

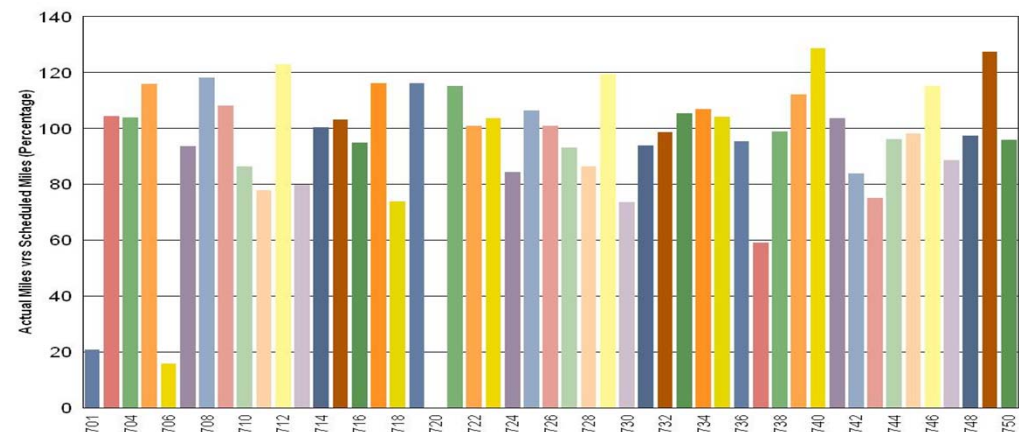
Explanation for under-used vehicles:

- 505-506** Vehicle was mostly out of service due to HVAC issues (HVAC false indication light keeps coming on) and then the mainline failure on 8/27/12 due to emergency brake application will not release. Vehicle is being held out of service for trouble-shooting.
- 513-514** Vehicle was out of service for 8 days due to J and H codes. Rear truck had 2 TM and was grounded on Car 514. Trucks had to be replaced.
- 527-522** Vehicle out of service due to propulsion faults intermittently recurring even after applying modified boards from consultant's recommendation. Problem occurred in one of the trucks. Vehicle was placed on status 4 and is awaiting parts (axles and journal bearing).

Metro Red/Purple Lines

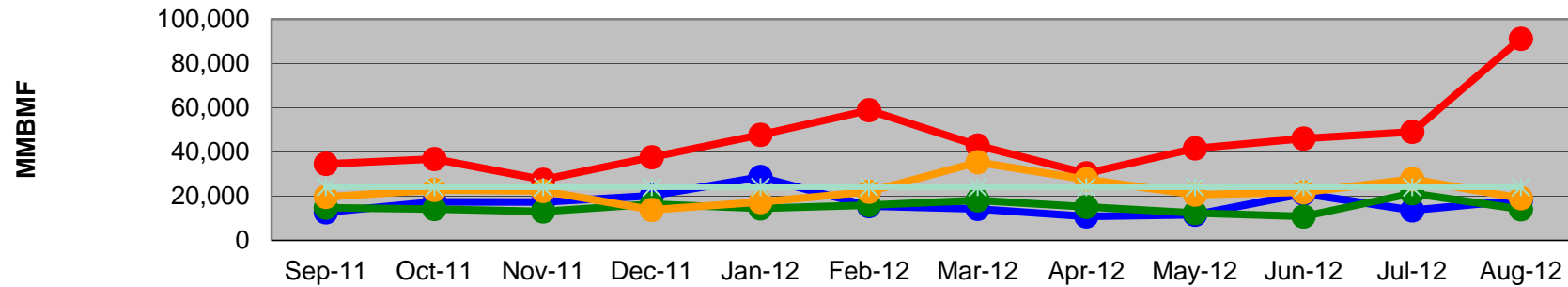


Metro Gold Line



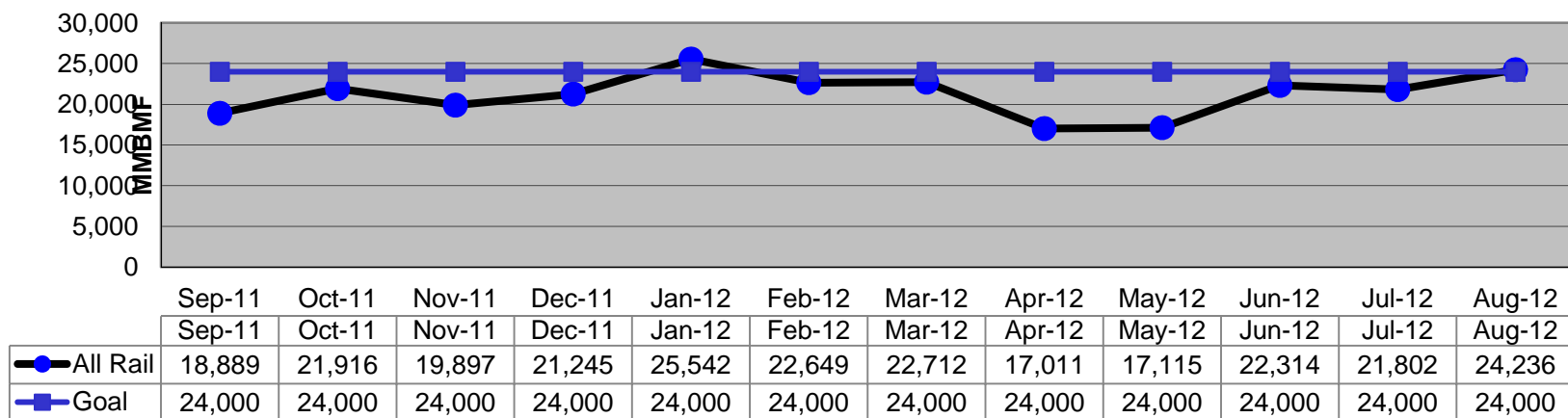
Mean Miles Between Failures (Major) Year to Date

Mean Miles Between Major Failures (12 months)



	Sep-11	Oct-11	Nov-11	Dec-11	Jan-12	Feb-12	Mar-12	Apr-12	May-12	Jun-12	Jul-12	Aug-12
Blue/Expo Lines	12,679	17,397	17,322	20,187	28,614	15,454	14,216	10,803	11,546	21,129	13,559	18,185
Red/Purple Lines	34,535	36,745	27,358	37,551	47,660	58,828	42,883	30,255	41,539	46,006	49,022	91,119
Green Line	14,740	14,148	13,029	16,379	14,448	15,895	18,092	15,108	12,342	10,775	21,266	14,043
Gold Line	19,647	22,773	22,340	13,743	17,298	21,981	35,279	27,526	20,649	21,726	27,641	19,040
Goal	24,000	24,000	24,000	24,000	24,000	24,000	24,000	24,000	24,000	24,000	24,000	24,000

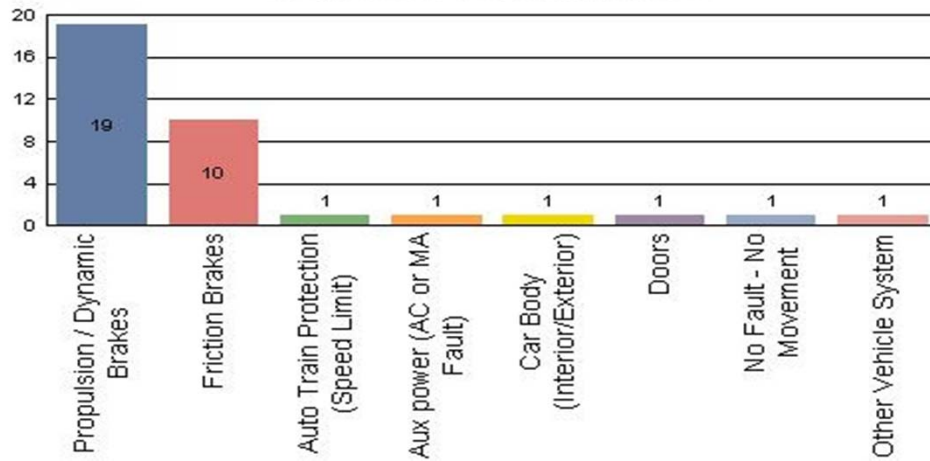
Mean Miles Between Major Failures (all)



Major Incidents August 2012

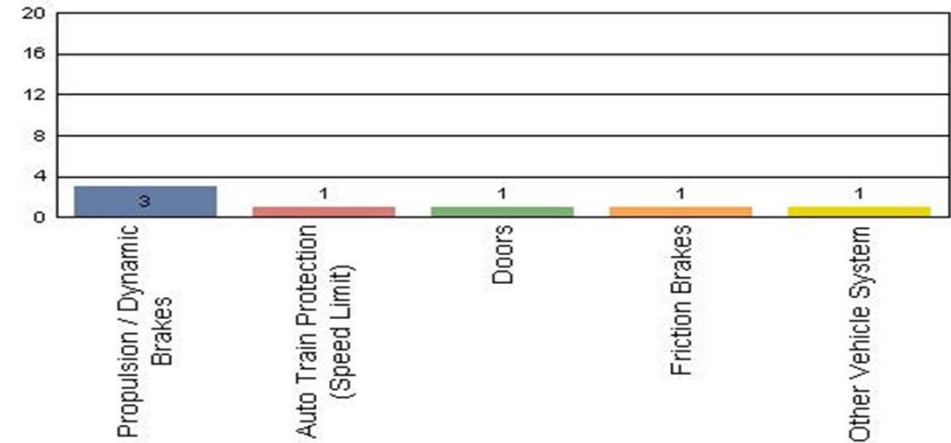
Metro Blue/Expo Line

Top Incident Categories



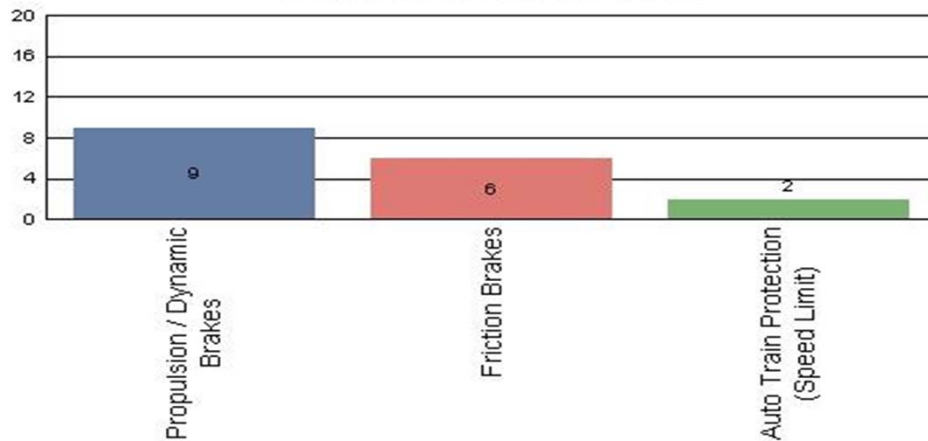
Metro Red/Purple Line

Top Incident Categories



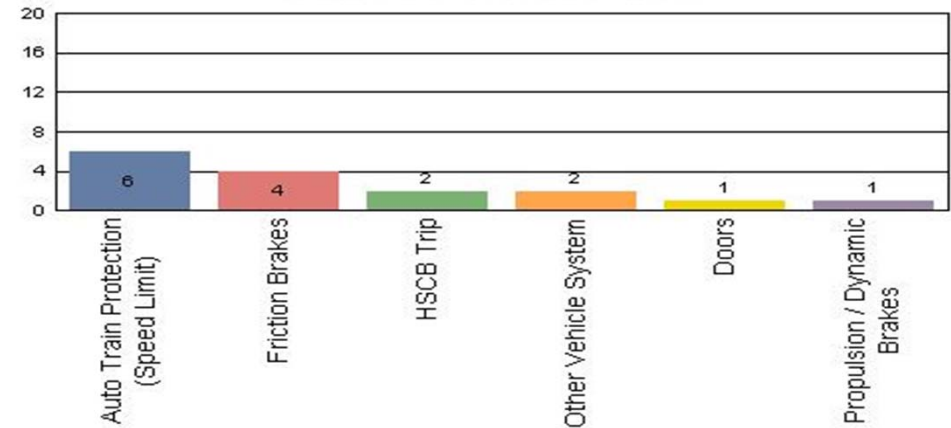
Metro Green Line

Top Incident Categories



Metro Gold Line

Top Incident Categories



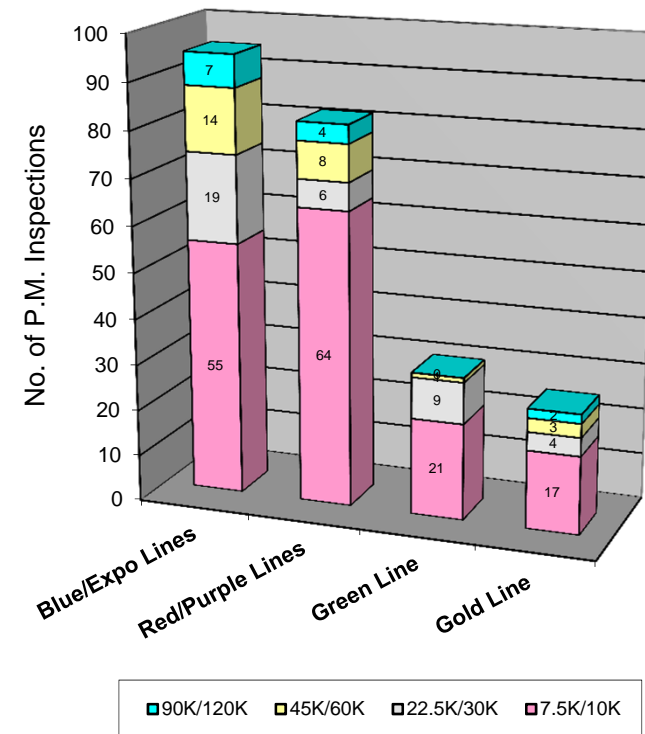
Preventive Maintenance Compliance

August 2012

PM Compliance	Sep-11	Oct-11	Nov-11	Dec-11	Jan-12	Feb-12	Mar-12	Apr-12	May-12	Jun-12	Jul-12	Aug-12
Blue/Expo Lines	100%	100%	100%	100%	100%	100%	100%	100%	100%	100%	100%	100%
Red/Purple Lines	100%	100%	100%	100%	100%	100%	100%	100%	100%	100%	100%	*98%
Green Line	100%	100%	100%	96%	100%	100%	100%	100%	100%	96%	100%	100%
Gold Line	100%	100%	100%	100%	100%	100%	100%	100%	100%	100%	100%	100%

August 2012 Preventive Maintenance Inspections

No. of P.M. Inspections	7.5K/10K	22.5K/30K	45K/60K	90K/120K	Totals
Blue/Expo Lines	55	19	14	7	95
Red/Purple Lines	64	6	8	4	82
Green Line	21	9	1	0	31
Gold Line	17	4	3	2	26
Totals:	157	38	26	13	234

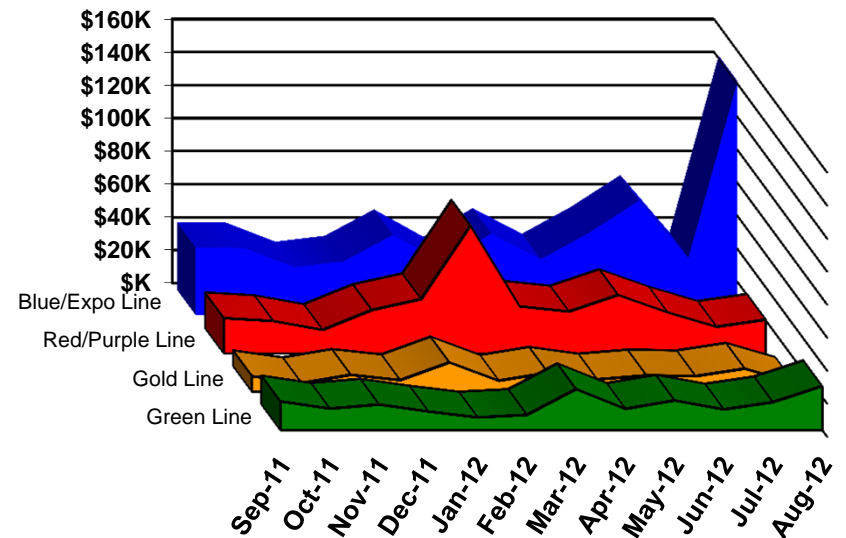


Vandalism & Graffiti Report

August 2012

	Sep-11	Oct-11	Nov-11	Dec-11	Jan-12	Feb-12	Mar-12	Apr-12	May-12	Jun-12	Jul-12	Aug-12	Year-to-Date
Blue/Expo Line	\$41K	\$41K	\$29K	\$33K	\$49K	\$32K	\$49K	\$34K	\$50K	\$69K	\$35K	\$142K	\$603K
Red/Purple Line	\$21K	\$20K	\$14K	\$26K	\$33K	\$77K	\$28K	\$25K	\$35K	\$25K	\$16K	\$20K	\$342K
Green Line	\$17K	\$13K	\$15K	\$11K	\$8K	\$9K	\$25K	\$13K	\$18K	\$12K	\$17K	\$27K	\$185K
Gold Line	\$9K	\$5K	\$10K	\$7K	\$18K	\$7K	\$11K	\$7K	\$10K	\$9K	\$14K	\$5K	\$114K
Totals:	\$89K	\$78K	\$69K	\$77K	\$107K	\$125K	\$114K	\$79K	\$113K	\$116K	\$82K	\$194K	\$1,244K

August 2012 Vandalism & Graffiti - All Rail				
	Qty	Labor	Materials	Totals
Windows replaced	17	\$5,229	\$5,798	\$11,027
Vandal Shields	585	\$14,564	\$7,619	\$22,183
Seats Cleaned	560	\$1,987	\$0	\$1,987
Seats Replaced	1,980	\$62,049	\$67,106	\$129,155
Graffiti removal - other	645	\$22,238	\$1,200	\$23,438
Repainting panels	9	\$5,788	\$510	\$6,298
Totals	3,796	\$111,855	\$82,233	\$194,088



Graffiti Pictures August 2012

Blue Line



Green Line



Gold Line

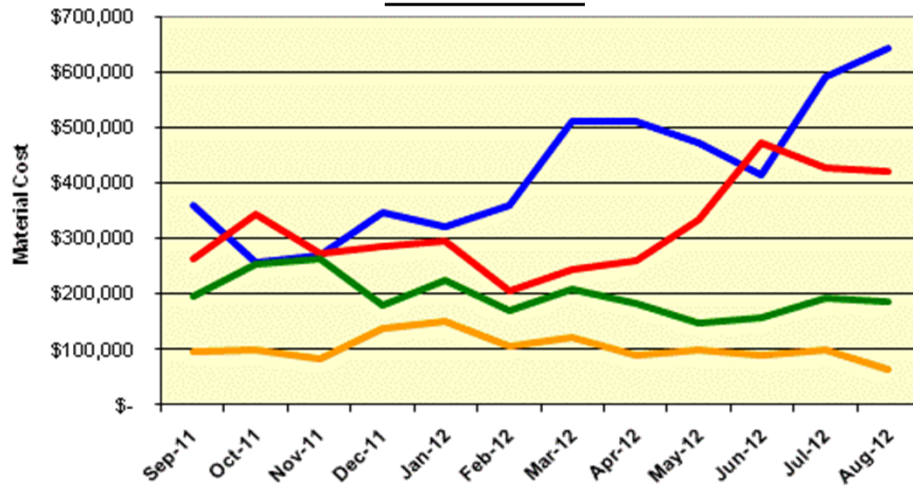


Material and Labor Costs

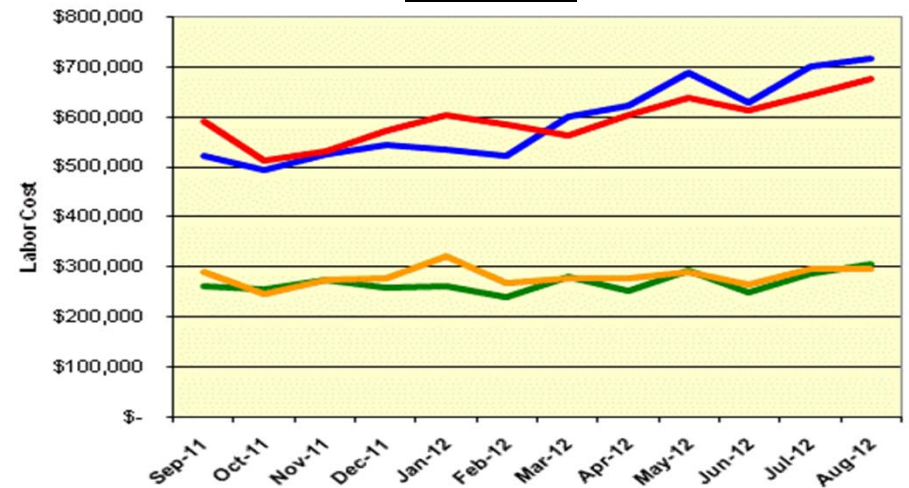
August 2012

MATERIALS	Sep-11	Oct-11	Nov-11	Dec-11	Jan-12	Feb-12	Mar-12	Apr-12	May-12	Jun-12	Jul-12	Aug-12
Blue/Expo Lines	\$ 359,508	\$ 256,152	\$ 268,760	\$ 346,891	\$ 322,169	\$ 359,911	\$ 510,512	\$ 511,185	\$ 473,281	\$ 414,601	\$ 591,928	\$ 643,006
Red/Purple Lines	\$ 263,808	\$ 344,563	\$ 272,291	\$ 285,916	\$ 296,353	\$ 205,225	\$ 244,902	\$ 260,532	\$ 335,824	\$ 474,908	\$ 428,864	\$ 424,173
Green Line	\$ 198,811	\$ 254,691	\$ 265,489	\$ 180,929	\$ 227,110	\$ 172,152	\$ 210,220	\$ 186,572	\$ 149,660	\$ 157,920	\$ 194,003	\$ 189,811
Gold Line	\$ 94,967	\$ 98,380	\$ 83,425	\$ 138,599	\$ 150,971	\$ 106,736	\$ 121,821	\$ 91,218	\$ 98,407	\$ 88,885	\$ 98,449	\$ 64,112
Totals	\$ 917,095	\$ 953,786	\$ 889,965	\$ 952,335	\$ 996,603	\$ 844,024	\$ 1,087,455	\$ 1,049,507	\$ 1,057,172	\$ 1,136,314	\$ 1,313,244	\$ 1,321,102

Material Costs



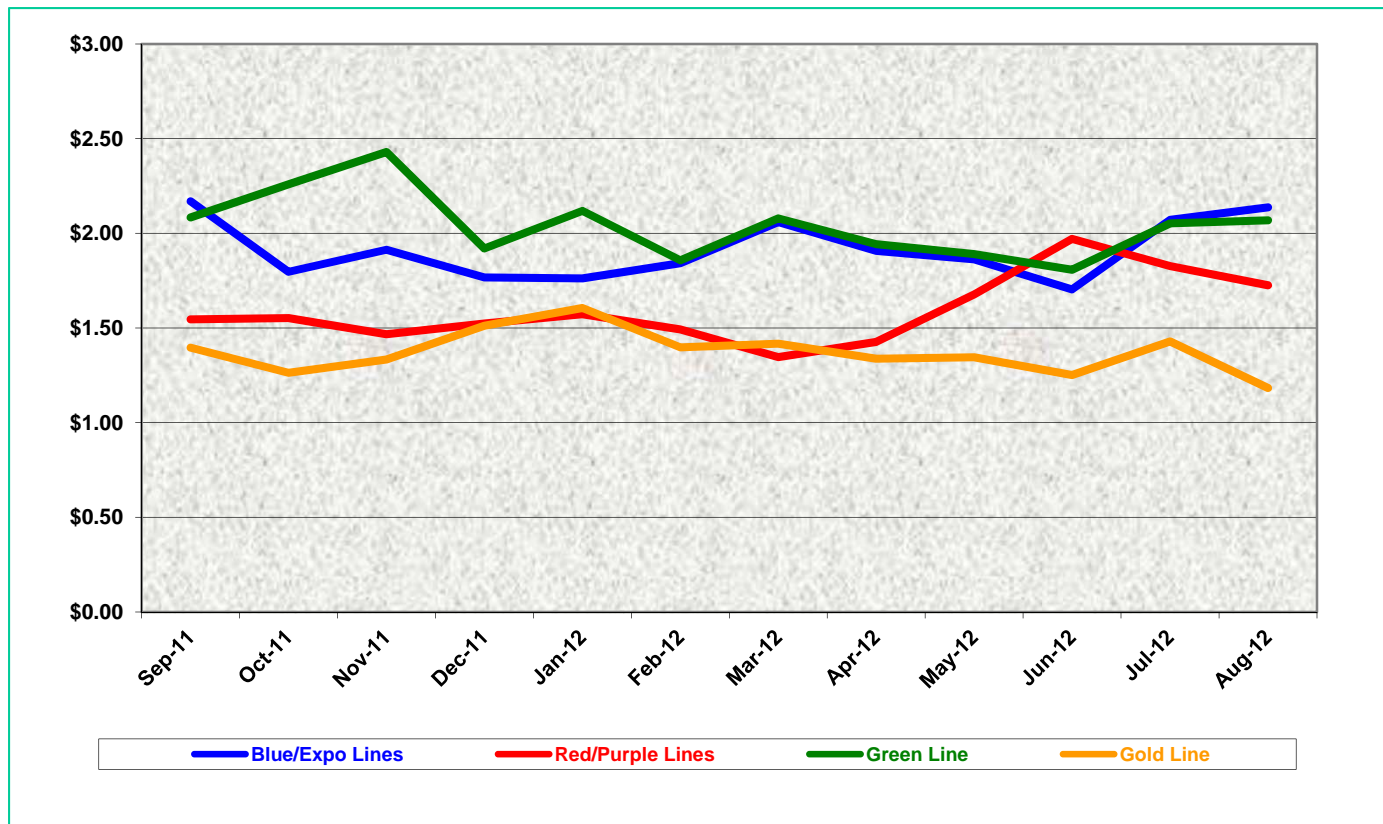
Labor Costs



LABOR	Sep-11	Oct-11	Nov-11	Dec-11	Jan-12	Feb-12	Mar-12	Apr-12	May-12	Jun-12	Jul-12	Aug-12
Blue/Expo Lines	\$ 520,526	\$ 493,739	\$ 526,600	\$ 544,564	\$ 534,797	\$ 522,603	\$ 601,905	\$ 622,113	\$ 687,897	\$ 628,928	\$ 699,849	\$ 716,987
Red/Purple Lines	\$ 589,986	\$ 510,944	\$ 530,408	\$ 571,885	\$ 602,770	\$ 584,940	\$ 562,875	\$ 602,434	\$ 639,102	\$ 613,032	\$ 645,748	\$ 676,501
Green Line	\$ 261,796	\$ 256,610	\$ 272,603	\$ 259,198	\$ 262,563	\$ 241,042	\$ 278,653	\$ 253,643	\$ 293,492	\$ 251,094	\$ 286,110	\$ 304,066
Gold Line	\$ 289,048	\$ 246,890	\$ 274,017	\$ 276,926	\$ 321,152	\$ 267,372	\$ 277,944	\$ 276,975	\$ 290,375	\$ 264,536	\$ 296,565	\$ 296,078
Totals	\$ 1,661,357	\$ 1,508,183	\$ 1,603,628	\$ 1,652,573	\$ 1,721,282	\$ 1,615,957	\$ 1,721,377	\$ 1,755,165	\$ 1,910,866	\$ 1,757,590	\$ 1,928,272	\$ 1,993,632

Cost Per Mile August 2012

Cost per mile:	Sep-11	Oct-11	Nov-11	Dec-11	Jan-12	Feb-12	Mar-12	Apr-12	May-12	Jun-12	Jul-12	Aug-12	Average
Blue/Expo Lines	\$2.17	\$1.80	\$1.91	\$1.77	\$1.76	\$1.84	\$2.06	\$1.91	\$1.86	\$1.70	\$2.07	\$2.14	\$1.92
Red/Purple Lines	\$1.55	\$1.55	\$1.47	\$1.52	\$1.57	\$1.49	\$1.35	\$1.43	\$1.68	\$1.97	\$1.83	\$1.73	\$1.59
Green Line	\$2.08	\$2.26	\$2.43	\$1.92	\$2.12	\$1.86	\$2.08	\$1.94	\$1.89	\$1.81	\$2.05	\$2.07	\$2.04
Gold Line	\$1.40	\$1.26	\$1.33	\$1.51	\$1.61	\$1.40	\$1.42	\$1.34	\$1.34	\$1.25	\$1.43	\$1.18	\$1.37



Absences vs. Overtime

August 2012

ABSENCE TYPE and HOURS	3940 Admin.	3941 Blue	3942 Red	3943 Green	3944 Gold	3947 Expo	Total
AWP-ABSENT W/O PERMISSION	0.00	2.72	0.00	24.00	0.00	0.00	26.72
BER-BEAVEMENT	0.00	0.00	80.00	0.00	0.00	0.00	80.00
CTO-COMPENSATORY TIME OFF	0.00	127.75	168.00	83.50	128.00	72.00	579.25
CUT-EMPLOYEE LEAVES EARLY	0.48	0.50	0.02	1.33	0.50	0.02	2.85
CVA - CASUAL VACATION	0.00	44.50	641.00	0.00	360.70	0.00	1,046.20
DSL-DISABILITY LEAVE/LONG	0.00	368.00	160.00	136.00	329.00	0.00	993.00
EFH-EMG. FLOAT HOL.	0.00	0.00	104.00	40.00	16.00	0.00	160.00
ETO-EXCUSED TIME OFF	10.50	57.00	36.80	2.50	41.53	0.50	148.83
FMI-FAM IND INJURY	0.00	0.00	0.00	224.00	0.00	0.00	224.00
FML-FAMILY CARE LEAVE	0.00	1,000.00	484.00	370.25	40.00	0.00	1,894.25
FMS-FAMILY LEAVE SICK	0.00	234.20	178.60	48.00	40.00	0.00	500.80
HLF-HOLIDAY FLOATING	80.00	624.00	424.00	128.00	232.00	40.00	1,528.00
II-INDUSTRIAL INJURY	0.00	0.00	368.00	0.00	0.00	0.00	368.00
IIR-INDUS INJURY-REOCCUR.	0.00	160.00	0.00	0.00	0.00	0.00	160.00
JUR-JURY DUTY	0.00	8.00	16.00	0.00	24.00	0.00	48.00
LC1-LABOR CODE 233	24.00	96.00	99.83	18.90	72.00	0.00	310.73
MLN-MILITARY ABSENCE-UNPAID	0.00	0.00	0.00	24.00	0.00	0.00	24.00
OWP-OFF WITH PERMISSION	0.00	0.00	0.00	0.00	8.00	0.00	8.00
RTO-REQUESTED TIME OFF-NO PA	0.00	66.75	0.00	6.93	0.00	0.00	73.68
SCK-SICK PAY	56.00	64.00	88.00	96.00	32.00	0.00	336.00
SCW-SICK WITHOUT PAY	0.00	184.00	108.08	125.75	56.00	0.00	473.83
SUS-DISCIPLINARY SUSPENSION	0.00	0.00	0.00	40.00	0.00	0.00	40.00
TAR-TARDY	0.00	4.40	1.06	1.52	0.84	0.05	7.87
UB-UNION BUSINESS	0.00	0.00	0.00	8.00	0.00	0.00	8.00
VAC-VACATION	224.00	1,300.33	956.00	320.33	537.00	8.00	3,345.66
VAC-VACATION WHILE SICK	0.00	0.00	62.00	0.00	0.00	0.00	62.00
Total Absence Hours	395	4,342	3,975	1,699	1,918	121	12,450
Number of Work Force (assigned)	32	129	116	53	53	6	389
Full Work Force hours/month	5,546	22,356	20,103	9,185	9,185	1,040	67,414
Absence as a % of Work Force	7%	19%	20%	18%	21%	12%	18%
OVERTIME TYPE and HOURS	3940	3941	3942	3943	3944	3947	Total
CTB-COMPENSATORY TIME TO BANK	0	301	334	167	127	42	970
OTP-PREM OVERTIME	669	4941	4477	1567	1544	88	13286
WLO-Worked Lunch Overtime	36	136	195	81	91	6	544
Total	704	5377	5006	1816	1762	136	14800
Overtime as a % of Work Force	13%	24%	25%	20%	19%	13%	22%
UNCOVERED ABSENCES	3940	3941	3942	3943	3944	3947	Total
Absences FTE	2	25	23	10	11	1	72
OTP FTE	4	31	29	10	10	1	85
FTE Difference	-2	-6	-6	0	1	0	-13

Rail Vehicle Engineering Project Summary

August 2012

Red Line AC Gear Box (Rev. 0)	A650/TS/026	Draft in process
Powered Axle Overhaul SOW	P2000 SOW	NTP was issued to PAMCO on 08/08/2012
Vital Relay Calibration	P865-P2020/TS/061	In Revising Process
Windows glass and rubber glazing specification	P865-P2020/TS-066	Released to Procurement - Bid is due on 08/22/12
Friction Brake Kit Less Air Compressor Overhaul	P2000/TS/035 Rev 0	Released to Procurement for bid - SS was signed - Going to DBE on 08/17/12
Center Truck Friction Brake Disc	P2000-TS-020 rev. 01	Awarded to Wabtec
A650 Battery Specification	A650/TS/39	Released to Procurement for bid - Answered Hoppeke Questions
Powered Axle Overhaul SOW	P865-P2020/TS/xx	Received draft from CH2M and in editing process
Seat Insert	P865-P2020/TS/62	Released to Procurement- Bid is due on 08/23/12
Red Line DC Gear Box (Rev. 0)	P650/TS/040	Released to Procurement for bid
Vandal Shield for all lines	A650-P865-P2000-P2550/TS/012	Released to Procurement- Bid was opened on 07/31/12 - Waiting for Mini Board approval
Aux power supply equipment (APSE) - Static Inverter	P865-P2020/TS/065 Rev. 0 [2 Parts]	Released to Procurement for bid
Tire kit specification	P865-P2020/TS/064	Released for signatures
Red Line (Base Buy) DC Traction Motor	P650/TS/041	Released to Procurement - Bid is due 09/14/12 - Answering Bid Questions
MBL HVAC Compressor	P865/P2020/TS/067 Rev. 0	Released to Procurement for bid
Head Sing LED	P2000/TS/xx	Draft in process
Chevron springs	P865/P2020/TS/068 Rev. 0	CH2M in editing process with Metro's comments
General - All Lines		Status
Roadway Worker Protection		CPUC/Installing ProTran1 Device-P865/P2020/P2000/P2550 completed, A650 in process
Fleet Failure Analysis		CH2M Hill
New Radios installed to replace old radios		Meeting 3/7/2012-Contract awarded, MBL and P2000 prototypes are in installation process.
Bike Space		P2000/P2550/A650 Fleet modification completed.
P2000 Overhaul Program		Status
Master Controller - Bombardier Refurbish		Ongoing Program
RSS and EOSS Bundle Cables/Connectors - Glenair		In Progress
Handicap Seat Modification using Velcro		MGL In Progress
CCH possible replacement (Focon)		Send information to Focon
TWC Calibration procedure.		Base Line data confirmed and existing TWC test equipment mapped for performance. Systra on board developing TWC calibration procedures.
P865/P2020 Program		Status
Static Inverter - Transtechnik		Inverter running in revenue service for testing - No issues - Spec released to Procurement
Remotely reset CB1 Breaker		ABB Prototype was successfully tested. Fleet modification completed.
"G" force measurement on Transponder installed on P865/P2020		H&K installed "G" sensor on transponder and collected data for analysis - 03/08/12. New carbody mounted bracket were tested and completed fleet modification. New antennas are in installation progress.
Under seat - No motion relays		ABB Prototype installed on 07/24/12 for one month test period. Test was successful. In process of procuring kits.
Replace air compressor DC motor with AC motor		Knorr prototype on order - Due in October 2012
P2000 Gold to Green		Status
Signal package conversion (Gold to green)		On-hold
TWC Investigation / Calibration (Systra)		90% complete. Base line established, TWC antenna jig designed and built, procedure written and worked though. Requires final document review and issue.
A650 Overhaul Program		Status
Midlife Overhaul Specification		Draft complete by Metro. In process of Consultant selection to complete.
HPT Upgrade		Wabtec Proposal received - Production run prototype by 08/15/12. NTP issued 08/08/12
ABI New Traction Motor Mount		ABI for Fleet Modification in progress. A total of twenty seven (83) trucks were completed.
Friction Brake Kit Overhaul		Overhaul program in place - Wabtec (30 Base cars were added and approved)
Ribbed Rubber Flooring PRF		Dealing with OEM - Procurement getting more quotes.
Door Operator Gearbox and Rollers Overhaul		In Progress - Buying kits from Vapor Stone to overhaul GB and motor in house.
H-4 electronic units		Unit upgrade - Fleet issues (Wabtec) to provide new unit proposal.
P2550		Status
Vehicle Acceptance		Forty nine cars have been Final Accepted. Car 702 are in commissioning test.
3P Flip Up Seat Finger Guard		Submitted SS to Procurement - Testori
Find alternative Vendor for Reverse Engineer PCB Boards P2550		In Progress
Compressor Dessicant Material		In Progress
Rubber Boots (High Voltage)		In Progress - Vulcanite. Buying OEM through A&E Telecom.
Cyclope light and Destination Sign Glass		In Progress - NASG
Ground Brush Schunk (Lamellar Seal failure investigation)		Awaiting ABI/SchUNK final update.
Expo		Status
Readiness		Metro-RFS Engineering is supporting qualification and test activities of vehicles and wayside.
ATP Certification		Mainline Testing Completed; waiting for final letter
P2000 Couple/un-couple issues		Investigation completed - Test was successful - Fleet modification in process.
Junction of Blue line and Expo line Testing		Safe Braking test completed at Culver City Station and report of successful test completed.
Junction of Blue line and Expo line Testing		Recent testing (07/26/12) indicated signal track problem at Culver City. Wayside are recertify track circuits. Further testing will be undertaken when complete.
Expo Frog Testing		Ensco Submitted Final Report on 09/07/12
ATP Cab Signal Mapping at the Junction and Expo Line Phase I		Completed Normal Run , need to finish Reverse run for the entire Expo line and the Junction.
Close out-Normal Run		Completed testing and issued final report on 08/31/12.
Brake rate testing on Vehicles 142B/159/160		



P2550 Vehicle Acceptance Program

August 2012

Vehicle Status Update:

- Metro has received 50 cars with 49 being final accepted and Vehicle 702 is in the acceptance stage with closeout of open items.

Engineering Activities Update:

- Event recorder: Configuration continues to be finalized. Software is on-site for final qualification.
- ATP/TWC Configuration: Final software was tested in August. Three items were identified as requiring resolution. A-STIS is investigating remedies for submittal to Metro for approval in September 2012.

Project Management:

- Contract spares continue to be delivered to Metro and estimated to be 90% complete. All parts needed for day-to-day maintenance have been received. Critical parts needed for heavy repairs are beginning to arrive.
- Daily and bi-weekly meetings are scheduled with contractor management to address project issues.

QA-Warranty Program Projects Summary

August 2012

QA-WARRANTY ACTIVITIES:

- Completed 1000 Mile Burn-In Acceptance Testing August 31st, Vehicle 702 is in the acceptance stage with closeout of open items.
- On-Going, P2550 Car Mod Campaign / Testing Oversight, Component Reliability Trend Tracking.
- On-Going, P2550 parts tracking: Contract Spares, Capital Spares, Warranty Spares & Metro Loaned Parts.
- On-Going, P2550 Warranty Claims Processing
- P2550 Contract closeout issues being discussed, issues of concern are contract spare parts, METRO loaned parts, availability of source replacement parts, equipment deliverables not yet received, plus other executive management business interest.
- On-Going A650 Base Buy & Option Car Fleet Warranty – Truck Frame Modification Campaign (53 Trucks of 232 modified to date). MRL Cost Avoidance savings accrued to date \$381,856.00.
- On-Going, Management's Special Interest Articulation / Cab Wiring Tightness Checks MBL & MGL P2000 Fleet Cars (24 of 52 completed).
- On-Going, Management's Special Interest 7.5K Supplemental Inspections & Articulation MBL & MGL P2000 Fleet Cars (33 of 52 completed).
- Various (19) QA PMI Audits, Spot Checks & Surprise/Unannounced Audits performed.
- On-Going QA FAI's or equipment inspection/failure investigations.
- QA oversight, MBL & MGL Fleets, (25 of 92 LRV's) Truck Inspections, Journal Bearing Housing Inspections, Damper Inspections, Wheel Back-to-Back Measurements, Wheel Flange Measurements, Wheel Residual Mount Inspections.
- On-Going Warranty-QA interest oversight & tracking: Overhauls / Mod Programs, (A650/P2000/P2020/865/P2550) Propulsion System, Master Controllers, Capacitor Banks, Air Compressors, Aux Power, Couplers, Gearboxes, Articulation Diaphragms, Friction Brakes, HPT's, Brake Resistor Grids, T/M's, MA's, HVAC, Doors, A/C Motors – (Blowers & Evaporators).

RFS Instruction Department Activities

August 2012

Training classes completed during the month of August 2012

Description	Course Hours	Student Count	Training Hours
<u>Blue & Expo Line Training - (P865/2020 & P2000 LRV):</u>			
RFS 2-WEEK RAIL INTRODUCTION	24	6	144
RFS SIEMENS 2000 GE HARMON ATP	48	12	576
RFS SIEMENS 2000 VEHICLE SYSTEMS	48	12	576
Total Blue Line Training (Hours):			1,296
<u>Red Line Training (Breda A650 HRV):</u>			
RFS 2-WEEK RAIL INTRODUCTION	80	2	160
Total Red Line Training (Hours):			160
<u>Green Line Training (P2000 LRVs):</u>			
RFS 2-WEEK RAIL INTRODUCTION	80	2	160
Total Green Line Training (Hours):			160
<u>Gold Line Training (P2550 LRVs):</u>			
RFS 2-WEEK RAIL INTRODUCTION	80	1	80
Total Gold Line Training (Hours):			80
Total RFS Instruction for the month of August 2012 (Hours):			1,696
<u>Other Instruction Activities</u>			
RFS 2-WEEK RAIL INTRODUCTION preparations			80
RFS SIEMENS 2000 VEHICLE COURSE preparations			96

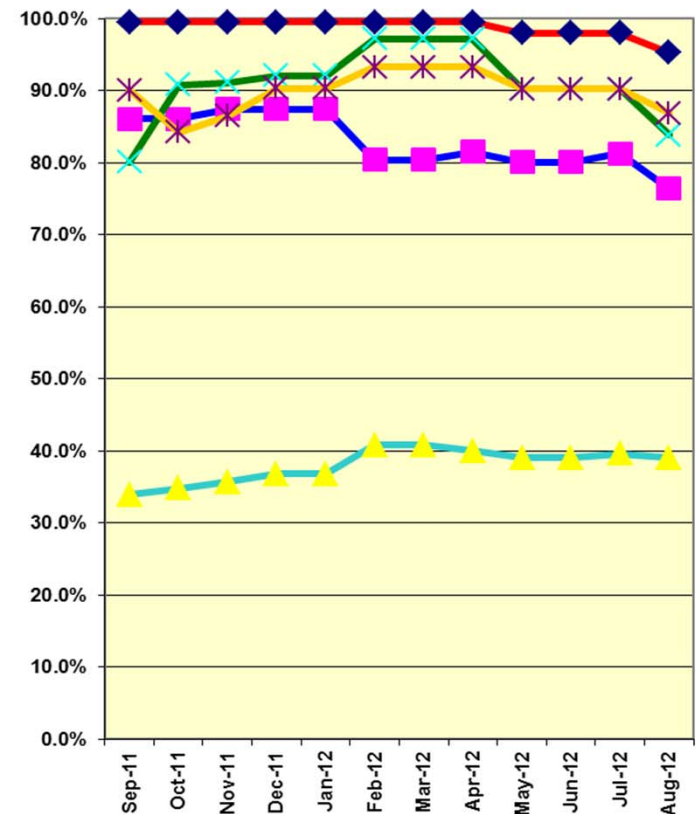
Total Other Instruction Activities **176.0**

Core Vehicle Training Completed: **BLUE** **RED** **GREEN** **GOLD**

Percentage of core vehicle training complete: **76.4%** **95.3%** **83.8%** **86.9%**

Siemens P2000 training complete: 39.0% N/A N/A N/A

Core Training Completed



Average Specialist Rail Experience Level in Years: **10.5** **10.5** **8.8** **9.8**

Variations caused by new hires, employee transfers, & training completed