



Rail Fleet Services Monthly Report February 2012

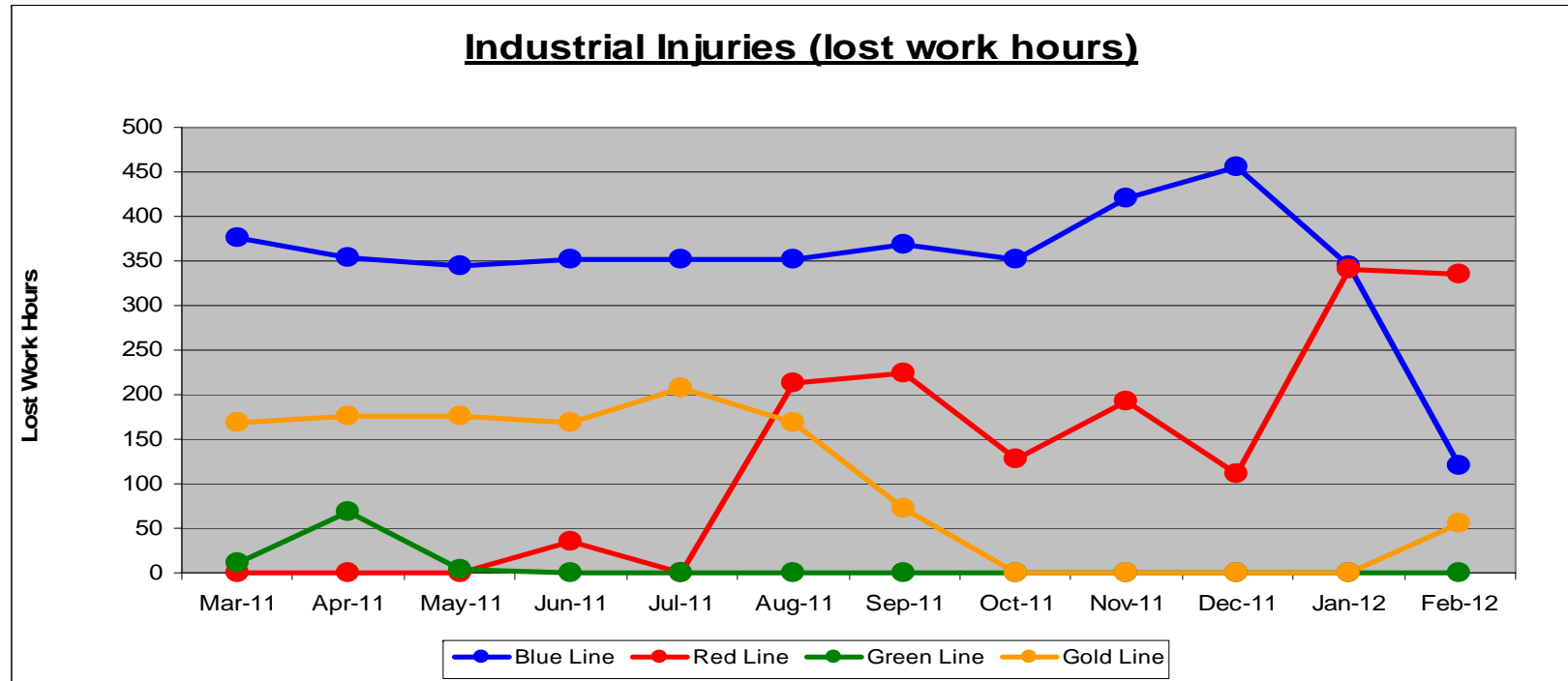


Metro

Table of Contents

| | | |
|---|--|---------|
| • | Safety | |
| | - Industrial Injuries | Page 3 |
| | - Rail Vehicle Accidents & Major Incidents | Page 4 |
| • | Customer Service | |
| | - Service Delivery – AM/PM Pull-Outs | Page 5 |
| | - Vehicle Utilization – Blue Line & Green Line | Page 6 |
| | - Vehicle Utilization – Red Line & Gold Line | Page 7 |
| | - Mean Miles Between Failures (Major) | Page 8 |
| | - Repeat Failures | Page 9 |
| • | Business Processes | |
| | - Major Incidents | Page 10 |
| | - Preventive Maintenance Compliance | Page 11 |
| • | Finance | |
| | - Vandalism & Graffiti Costs | Page 12 |
| | - Graffiti Pictures | Page 13 |
| | - Material & Labor Costs | Page 14 |
| | - Cost per mile | Page 15 |
| | - Absence vs. Overtime | Page 16 |
| • | Engineering | |
| | - Rail Vehicle Engineering Project Summary | Page 17 |
| | - P2550 Vehicle Acceptance Program | Page 18 |
| • | Quality Assurance | |
| | - Warranty Program Projects Summary | Page 19 |
| • | Growth | |
| | - RFS Instruction Department Activities | Page 20 |

Industrial Injuries – Lost Work Hours February 2012



| | Employees | | February 2012 Lost Work Hours | | | |
|--------------|-----------|--------|-------------------------------|-------------------|------------------------|------------|
| | Assigned | Active | Service Attendant | Maint. Specialist | Body Repairer /Painter | Total Hrs. |
| Blue Line | 117 | 112 | 0 | 0 | 120 | 120 |
| Red Line | 107 | 99 | 336 | 0 | 0 | 336 |
| Green Line | 48 | 46 | 0 | 0 | 0 | 0 |
| Gold Line | 52 | 48 | 48 | 8 | 0 | 56 |
| Eng/QA/Admin | 31 | 31 | 0 | 0 | 0 | 0 |
| Totals | 355 | 336 | 384 | 8 | 120 | 512 |

Rail Vehicle Accidents & Major Incidents

February 2012

| Repair Costs | Mar-11 | Apr-11 | May-11 | Jun-11 | Jul-11 | Aug-11 | Sep-11 | Oct-11 | Nov-11 | Dec-11 | Jan-12 | Feb-12 | Totals |
|--------------|---------|----------|---------|---------|---------|---------|---------|---------|----------|---------|---------|---------|----------|
| Blue Line | \$684 | \$26,990 | \$4,844 | \$189 | \$0 | \$395 | \$7,337 | \$888 | \$16,188 | \$1,199 | \$4,704 | \$5,087 | \$68,505 |
| Red Line | \$0 | \$0 | \$0 | \$0 | \$0 | \$0 | \$0 | \$0 | \$0 | \$0 | \$0 | \$0 | \$0 |
| Green Line | \$0 | \$0 | \$0 | \$0 | \$0 | \$0 | \$0 | \$0 | \$0 | \$0 | \$0 | \$0 | \$0 |
| Gold Line | \$4,031 | \$0 | \$0 | \$5,458 | \$3,763 | \$2,567 | \$0 | \$320 | \$0 | \$0 | \$0 | \$0 | \$16,139 |
| Totals | \$4,715 | \$26,990 | \$4,844 | \$5,647 | \$3,763 | \$2,962 | \$7,337 | \$1,208 | \$16,188 | \$1,199 | \$4,704 | \$5,087 | \$84,644 |

| Rail Vehicle Accident Costs - February 2012 | | | | |
|---|------------|----------------------|--|-------------------|
| Metro Blue Main Line | | | | |
| Date | Incident # | Problem code | Incident Description | Cost |
| 2/3/2012 | 2134158 | Train vs. Vehicle | Train No. 11 operator reported being involved in a 10-73 southbound at Flower & 18th street. | \$1,488.00 |
| 2/5/2012 | 2134568 | Train vs. Vehicle | Train No. 29 operator reported a 10-73 at Maple & Washington southbound on Track 2. | \$492.00 |
| 2/5/2012 | 2135371 | Train vs. Vehicle | Train No. 10 operator reported a 10-73 accident northbound at Long Beach & 14th Street. | \$2,757.00 |
| 2/12/2012 | 2138627 | Train vs. Pedestrian | Train No. 3 operator reported a 10-72 incident southbound at 103rd Street grade crossing. | \$350.00 |
| | | | GRAND TOTAL | \$5,087.00 |
| (10-71) = Train vs. Object, (10-72) = Train vs. Pedestrian, (10-73) = Train vs. Vehicle (10-74) = Train vs. MTA Vehicle, (10-75) = Derailment | | | | |

Service Delivery February 2012

Blue Line – Fleet Size 69 cars

| | <u>Vehicles Required</u> | <u>Average Available</u> | <u>% Up (Down)</u> |
|----------|------------------------------|------------------------------|------------------------|
| Pull Out | | | |
| Weekday: | 60 | 75 | 125% |
| Weekend: | 36 | 54 | 151% |

Late Pullouts: 1 *

Monthly Mileage: 475,881 miles

Expo Line – Fleet Size 21 cars

Expo Revenue Operations Date (ROD) to be determined.

Red Line - Fleet Size 104 cars

| | <u>Vehicles Required</u> | <u>Average Available</u> | <u>% Up (Down)</u> |
|----------|------------------------------|------------------------------|------------------------|
| Pull Out | | | |
| Weekday: | 70 | 83 | 119% |
| Weekend: | 48 | 62 | 130% |

Late Pullouts: 0 *

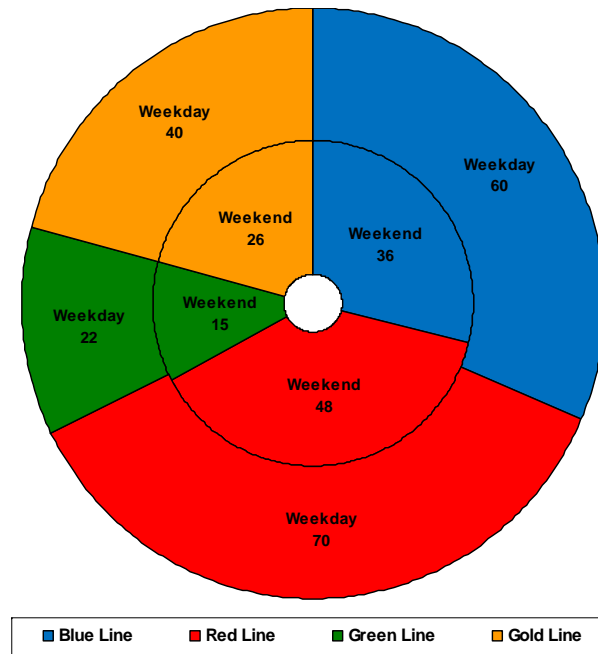
Monthly Mileage: 529,450 miles

Green Line – Fleet Size 29 cars

| | <u>Vehicles Required</u> | <u>Average Available</u> | <u>% Up (Down)</u> |
|----------|------------------------------|------------------------------|------------------------|
| Pull Out | | | |
| Weekday: | 22 | 23 | 105% |
| Weekend: | 15 | 18 | 123% |

Late Pullouts: 0 *

Monthly Mileage: 222,534 miles



Gold Line – Fleet Size 50 cars

P2550 – Fleet Size 48 cars

P2000 – Fleet Size 2 cars

| | <u>Vehicles Required</u> | <u>Average Available</u> | <u>% Up (Down)</u> |
|----------|------------------------------|------------------------------|------------------------|
| Pull Out | | | |
| Weekday: | 40 | 41 | 103% |
| Weekend: | 26 | 39 | 151% |

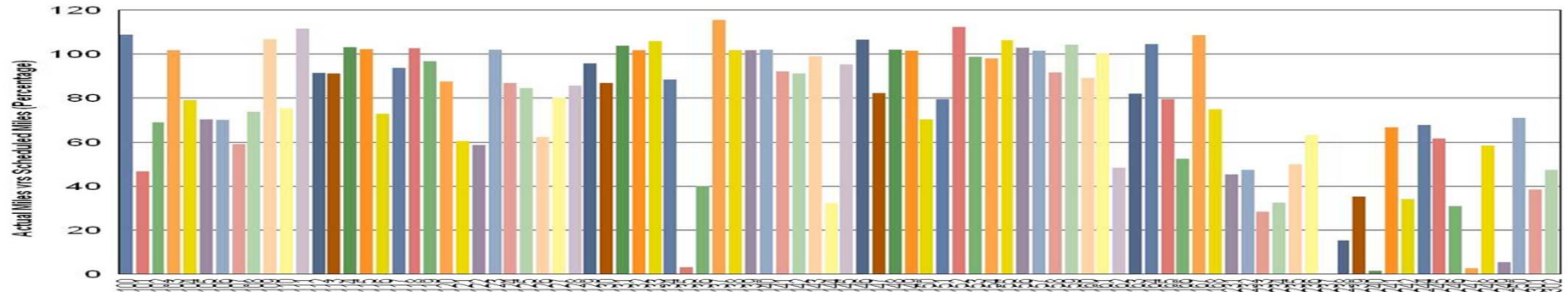
Late Pullouts: 0 *

Monthly Mileage: 263,767 miles

* Due to a vehicle related problem

Vehicle Utilization February 2012

Metro Blue/Expo Line Fleet



Blue Line:

Vehicles 135 & 144 are in paint and body shop for full interior graffiti abatement and exterior body/paint work.

The following are in Status 2 (not in service) for troubleshooting therefore not in revenue service at this time:

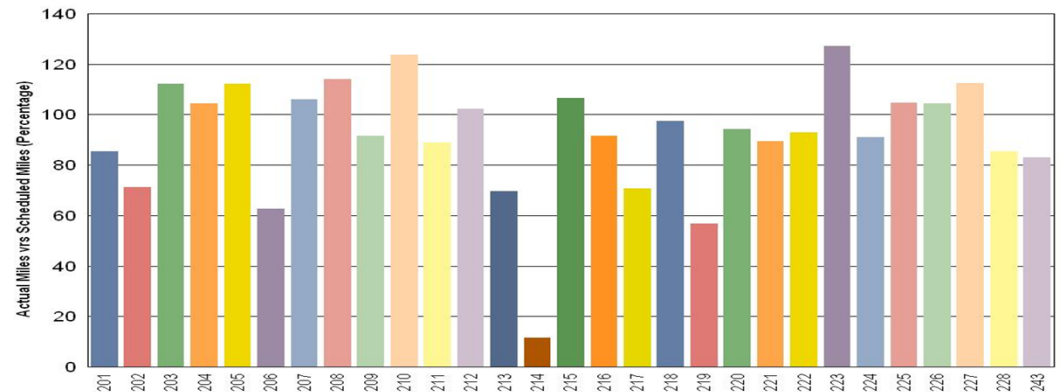
233, 234, 237-240, 242-247, 249, & 301

Green Line:

214

Vehicle out of service due to ATP and ATO problems.

Metro Green Line



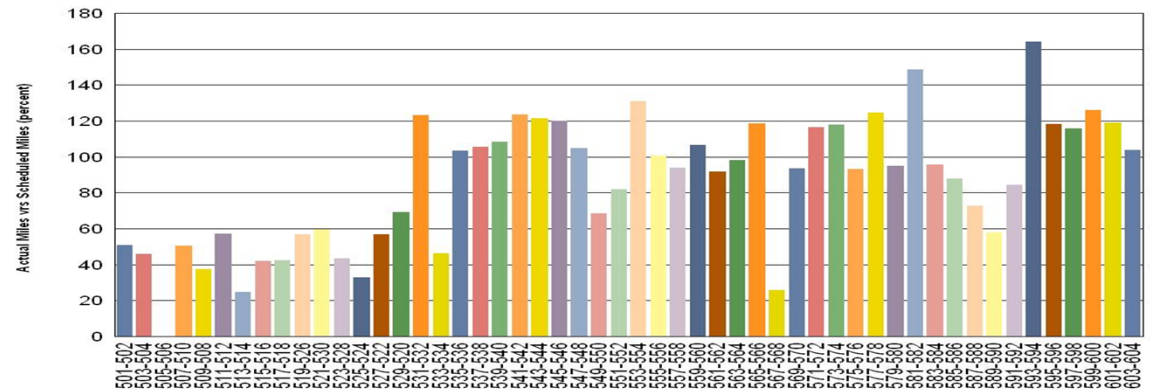
Vehicle Utilization February 2012

Red Line:

Explanation for under-used vehicles:

- 505-506** Restoration in progress in addition to 90k Preventive Maintenance (PM) inspections.
- 509-508** Vehicle was a repeater for TM couple shifting. Truck removal and installation is being done as well as mainline testing to verify proper repairs.
- 513-514** Vehicle was used as a training vehicle for HVAC refresher course that spanned two weeks.
- 525-524** Vehicle had propulsion failure that took several days to troubleshoot followed with a 7.5k PM inspection with numerous open work orders.
- 567-568** Vehicle was on Status 4 (waiting on batteries) from 1/2/12 to 2/18/12. Subsequently, vehicle was out of service until 2/21 for HVAC overhaul.

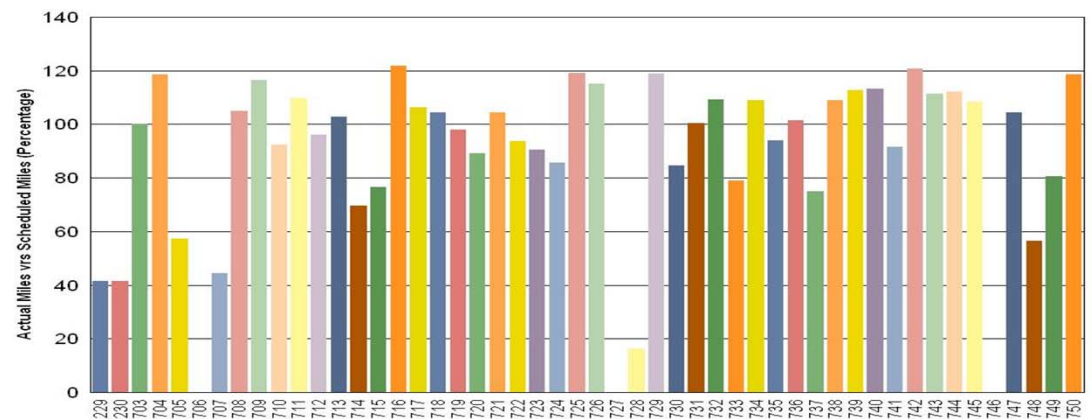
Metro Red Line



Gold Line:

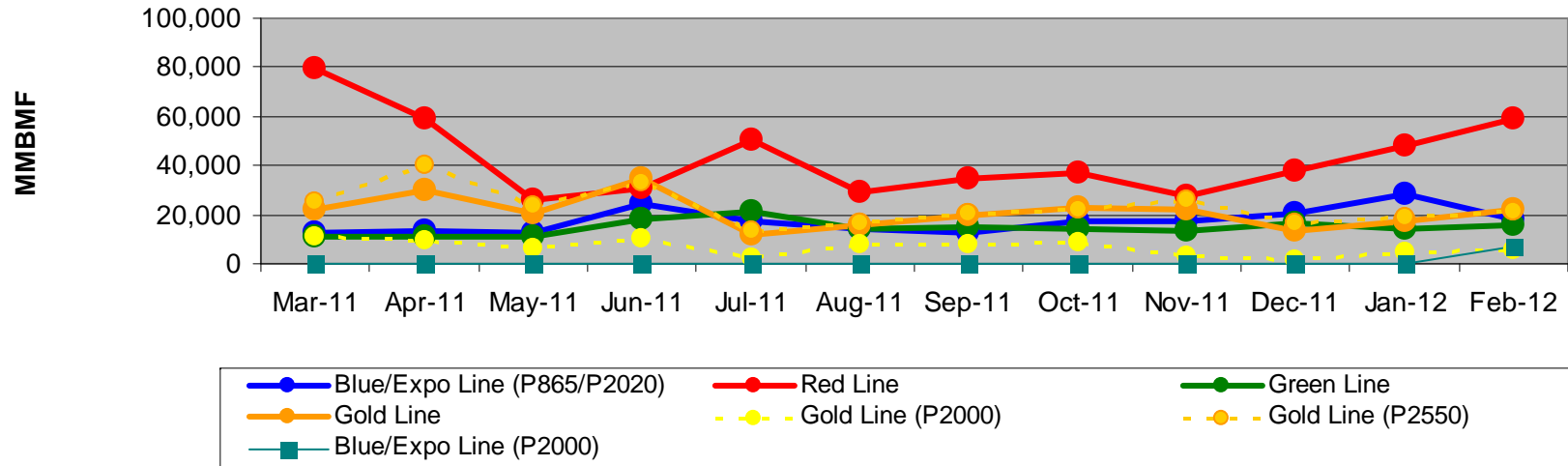
- 706** Vehicle is waiting on multiple parts for propulsion communication, brakes, etc.
- 727** Vehicle experienced burned-out wires, pins, and a connector in the 208 volt power supply circuit and is awaiting parts delivery.
- 728** Vehicle was restored on 2/25 however certain parts were needed to complete service and is awaiting parts delivery.
- 746** Vehicle experienced burned-out wires, pins, and a connector in the 208 volt power supply circuit and is awaiting parts delivery.

Metro Gold Line



Mean Miles Between Failures (Major) Year to Date

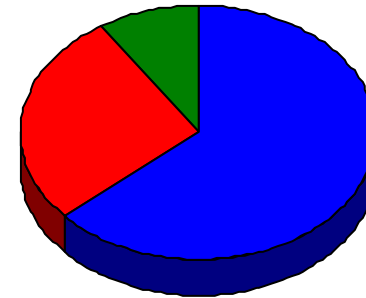
Mean Miles Between Major Failures (12 months)



| | Mar-11 | Apr-11 | May-11 | Jun-11 | Jul-11 | Aug-11 | Sep-11 | Oct-11 | Nov-11 | Dec-11 | Jan-12 | Feb-12 |
|-----------------------------|--------|--------|--------|--------|--------|--------|--------|--------|--------|--------|--------|--------|
| Blue/Expo Line (P865/P2020) | 12,500 | 13,483 | 12,557 | 24,050 | 17,123 | 14,425 | 12,679 | 17,397 | 17,322 | 20,187 | 28,614 | 18,322 |
| Blue/Expo Line (P2000) | 0 | 0 | 0 | 0 | 0 | 0 | 0 | 0 | 0 | 0 | 0 | 7,210 |
| Red Line | 79,178 | 59,089 | 26,084 | 30,932 | 50,099 | 29,298 | 34,535 | 36,745 | 27,358 | 37,551 | 47,660 | 58,828 |
| Green Line | 10,687 | 10,787 | 10,882 | 18,177 | 20,877 | 14,482 | 14,740 | 14,148 | 13,029 | 16,379 | 14,448 | 15,895 |
| Gold Line | 22,044 | 30,145 | 20,776 | 34,792 | 11,668 | 15,906 | 19,647 | 22,773 | 22,340 | 13,743 | 17,298 | 21,981 |
| Gold Line (P2000) | 11,413 | 9,625 | 6,377 | 10,351 | 2,153 | 8,019 | 7,872 | 8,887 | 3,509 | 1,639 | 4,638 | 5,215 |
| Gold Line (P2550) | 25,588 | 40,404 | 23,394 | 32,767 | 13,095 | 16,370 | 20,553 | 22,032 | 26,107 | 16,769 | 18,986 | 21,546 |

Repeat Failures February 2012

Metro Blue Line: 7 Repeat Failures
Metro Red Line: 3 Repeat Failures
Metro Green Line: 1 Repeat Failures
Metro Gold Line: 0 Repeat Failures



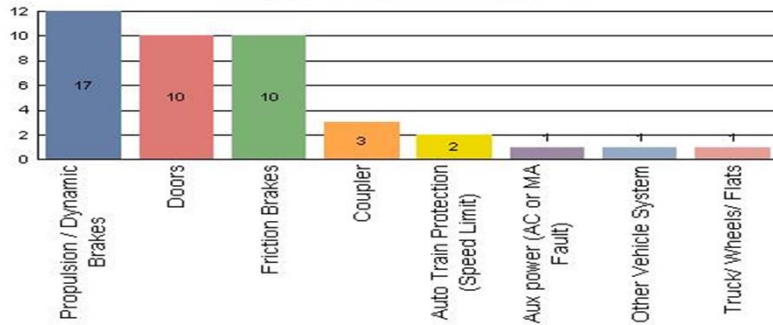
■ Blue Line
 ■ Red Line
 ■ Green Line
 ■ Gold Line

| Repeater Car Details - February 2012 | | | | | | | | |
|--------------------------------------|-----------|---------|----------|---------|------------|---------|-----------|---------|
| System | Blue Line | | Red Line | | Green Line | | Gold Line | |
| | Car # | Repeats | Car # | Repeats | Car # | Repeats | Car # | Repeats |
| ATP | 137 | 2 | | | | | | |
| ATO | | | | | 209 | 1 | | |
| Doors | 131 | 1 | 509 | 1 | | | | |
| | 134 | 1 | | | | | | |
| | 166 | 1 | | | | | | |
| Propulsion/Dynamic Brake | 168 | 2 | 511 | 1 | | | | |
| Radio | | | 537 | 1 | | | | |
| TOTALS | 7 | | 3 | | 1 | | 0 | |

Major Incidents February 2012

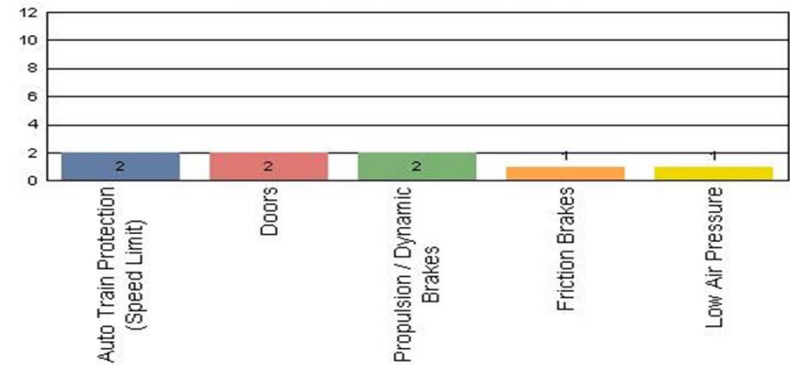
Metro Blue Line

Top Incident Categories



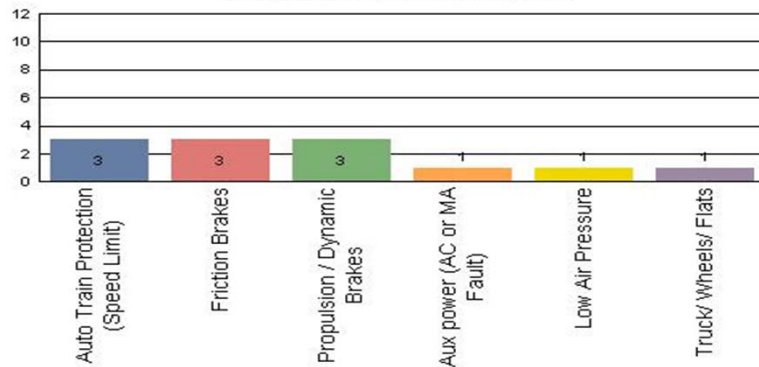
Metro Red Line

Top Incident Categories



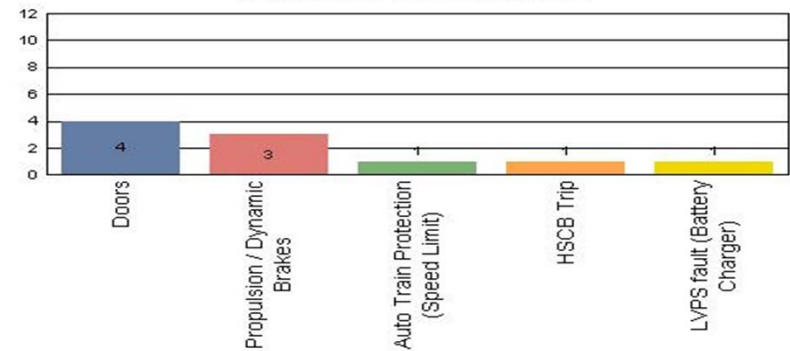
Metro Green Line

Top Incident Categories



Metro Gold Line

Top Incident Categories



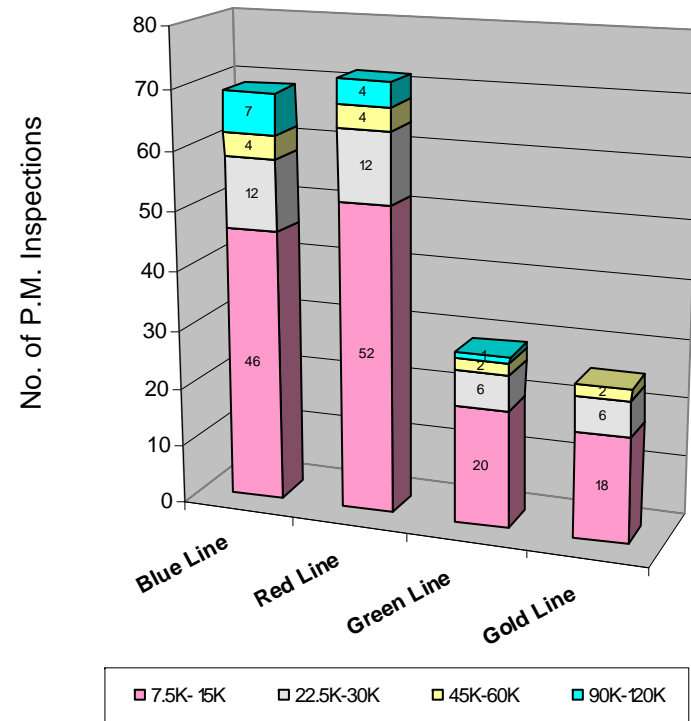
Preventive Maintenance Compliance

February 2012

| PM Compliance | Mar-11 | Apr-11 | May-11 | Jun-11 | Jul-11 | Aug-11 | Sep-11 | Oct-11 | Nov-11 | Dec-11 | Jan-12 | Feb-12 |
|---------------|--------|--------|--------|--------|--------|--------|--------|--------|--------|--------|--------|--------|
| Blue Line | 100% | 100% | 100% | 100% | 100% | 100% | 100% | 100% | 100% | 100% | 100% | 100% |
| Red Line | 100% | 100% | 90% | 100% | 100% | 100% | 100% | 100% | 100% | 100% | 100% | 100% |
| Green Line | 100% | 100% | 100% | 100% | 100% | 100% | 100% | 100% | 100% | 96% | 100% | 100% |
| Gold Line | 100% | 100% | 100% | 100% | 100% | 100% | 100% | 100% | 100% | 100% | 100% | 100% |

February 2012 Preventive Maintenance Inspections

| No. of P.M. Inspections | 7.5K- 15K | 22.5K-30K | 45K-60K | 90K-120K | Totals |
|-------------------------|-----------|-----------|---------|----------|--------|
| Blue Line | 46 | 12 | 4 | 7 | 69 |
| Red Line | 52 | 12 | 4 | 4 | 72 |
| Green Line | 20 | 6 | 2 | 1 | 29 |
| Gold Line | 18 | 6 | 2 | 0 | 26 |
| Totals: | 136 | 36 | 12 | 12 | 196 |

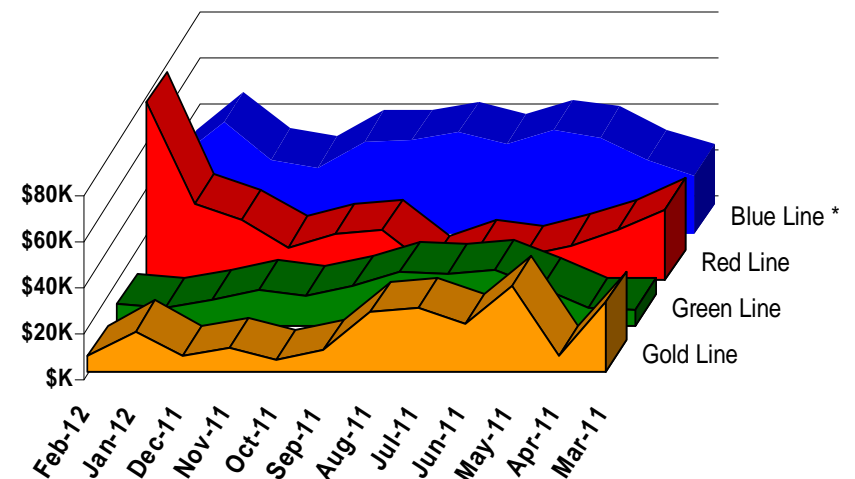


Vandalism & Graffiti Report

February 2012

| | Mar-11 | Apr-11 | May-11 | Jun-11 | Jul-11 | Aug-11 | Sep-11 | Oct-11 | Nov-11 | Dec-11 | Jan-12 | Feb-12 | Year-to-Date |
|-------------|--------|--------|--------|--------|--------|--------|--------|--------|--------|--------|--------|--------|--------------|
| Blue Line * | \$26K | \$32K | \$42K | \$45K | \$39K | \$44K | \$41K | \$41K | \$29K | \$33K | \$49K | \$32K | \$452K |
| Red Line | \$31K | \$22K | \$15K | \$10K | \$13K | \$6K | \$21K | \$20K | \$14K | \$26K | \$33K | \$77K | \$288K |
| Green Line | \$7K | \$8K | \$16K | \$24K | \$22K | \$23K | \$17K | \$13K | \$15K | \$11K | \$8K | \$9K | \$174K |
| Gold Line | \$31K | \$7K | \$37K | \$21K | \$28K | \$26K | \$9K | \$5K | \$10K | \$7K | \$18K | \$7K | \$205K |
| Totals: | \$94K | \$68K | \$111K | \$100K | \$102K | \$99K | \$89K | \$78K | \$69K | \$77K | \$107K | \$125K | \$1,119K |

| February 2012 Vandalism & Graffiti - All Rail | | | | |
|---|-------|----------|-----------|-----------|
| | Qty | Labor | Materials | Totals |
| Windows replaced | 30 | \$2,835 | \$5,062 | \$7,897 |
| Vandal Shields | 956 | \$28,365 | \$9,326 | \$37,691 |
| Seats Cleaned | 713 | \$1,907 | \$0 | \$1,907 |
| Seats Replaced | 1,016 | \$31,936 | \$20,187 | \$52,123 |
| Graffiti removal - other | 837 | \$15,281 | \$450 | \$15,731 |
| Repainting panels | 4 | \$8,440 | \$1,452 | \$9,892 |
| Totals | 3,556 | \$88,764 | \$36,477 | \$125,241 |



* Blue Line totals include vandalism & graffiti removal from the P2000 cars that will soon be used on the Expo Line.

Graffiti Pictures February 2012

Blue Line



Green Line



Gold Line

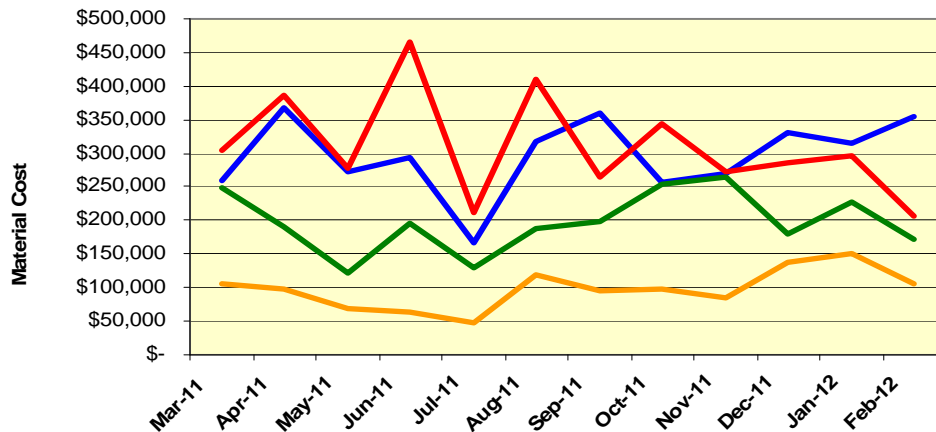


Material and Labor Costs

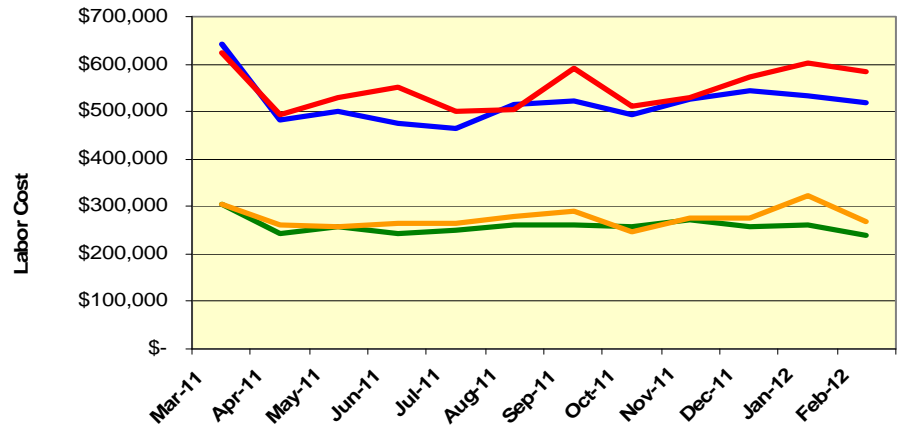
February 2012

| <u>MATERIALS</u> | Mar-11 | Apr-11 | May-11 | Jun-11 | Jul-11 | Aug-11 | Sep-11 | Oct-11 | Nov-11 | Dec-11 | Jan-12 | Feb-12 |
|------------------|------------|--------------|------------|--------------|------------|--------------|------------|------------|------------|------------|------------|------------|
| Blue Line | \$ 259,887 | \$ 368,467 | \$ 272,272 | \$ 294,179 | \$ 167,328 | \$ 318,296 | \$ 359,508 | \$ 256,152 | \$ 268,760 | \$ 331,976 | \$ 315,214 | \$ 354,700 |
| Red Line | \$ 305,345 | \$ 386,455 | \$ 277,113 | \$ 466,346 | \$ 212,074 | \$ 410,299 | \$ 263,808 | \$ 344,563 | \$ 272,291 | \$ 285,916 | \$ 296,353 | \$ 205,225 |
| Green Line | \$ 247,907 | \$ 189,460 | \$ 121,859 | \$ 194,750 | \$ 129,976 | \$ 187,997 | \$ 198,811 | \$ 254,691 | \$ 265,489 | \$ 180,929 | \$ 227,110 | \$ 172,152 |
| Gold Line | \$ 105,452 | \$ 96,824 | \$ 67,967 | \$ 64,397 | \$ 47,760 | \$ 118,401 | \$ 94,967 | \$ 98,380 | \$ 83,425 | \$ 138,599 | \$ 150,971 | \$ 106,736 |
| Totals | \$ 918,591 | \$ 1,041,206 | \$ 739,212 | \$ 1,019,672 | \$ 557,138 | \$ 1,034,993 | \$ 917,095 | \$ 953,786 | \$ 889,965 | \$ 937,420 | \$ 989,648 | \$ 838,813 |

Material Costs



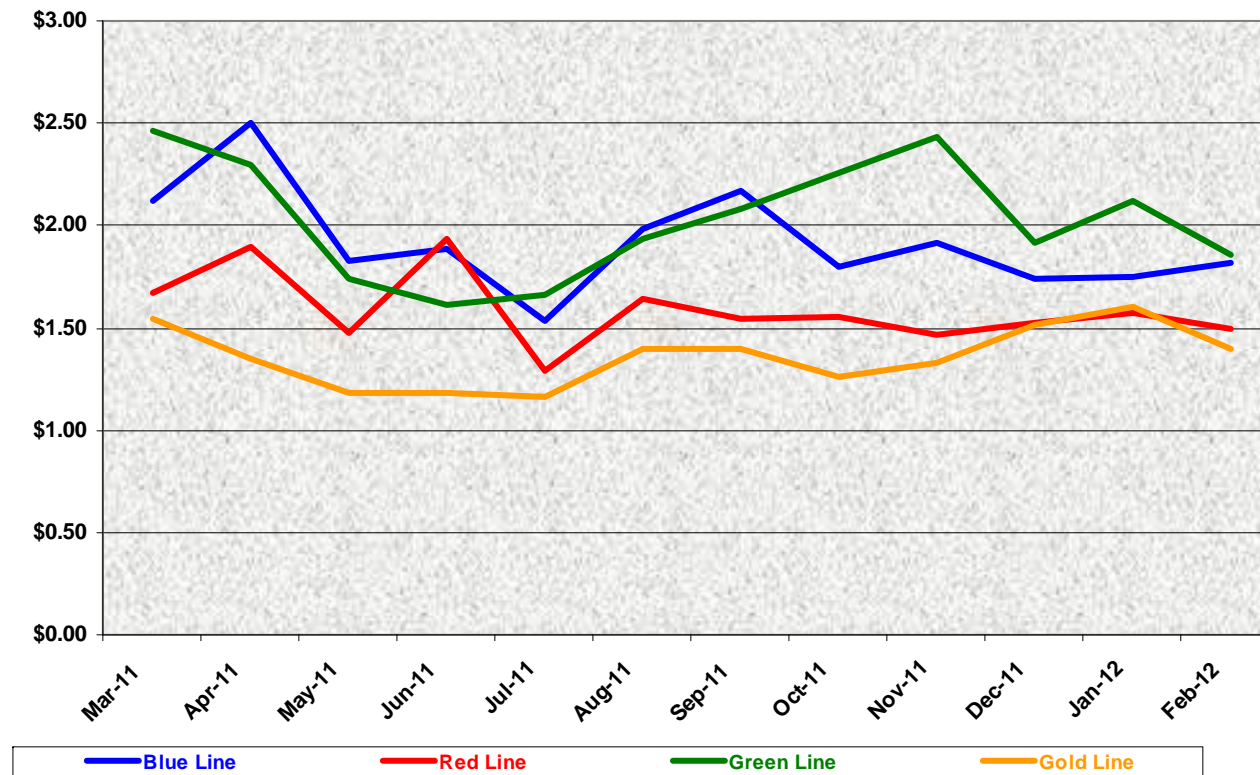
Labor Costs



| <u>LABOR</u> | Mar-11 | Apr-11 | May-11 | Jun-11 | Jul-11 | Aug-11 | Sep-11 | Oct-11 | Nov-11 | Dec-11 | Jan-12 | Feb-12 |
|--------------|--------------|--------------|--------------|--------------|--------------|--------------|--------------|--------------|--------------|--------------|--------------|--------------|
| Blue Line | \$ 642,540 | \$ 480,658 | \$ 500,263 | \$ 475,354 | \$ 464,468 | \$ 513,406 | \$ 520,526 | \$ 493,739 | \$ 526,600 | \$ 544,564 | \$ 534,797 | \$ 517,952 |
| Red Line | \$ 622,201 | \$ 493,104 | \$ 531,171 | \$ 550,464 | \$ 500,504 | \$ 504,785 | \$ 589,986 | \$ 510,944 | \$ 530,408 | \$ 571,885 | \$ 602,770 | \$ 584,940 |
| Green Line | \$ 305,821 | \$ 244,809 | \$ 257,678 | \$ 243,969 | \$ 250,617 | \$ 259,629 | \$ 261,796 | \$ 256,610 | \$ 272,603 | \$ 259,198 | \$ 262,563 | \$ 241,042 |
| Gold Line | \$ 303,998 | \$ 259,784 | \$ 257,114 | \$ 264,854 | \$ 265,256 | \$ 280,715 | \$ 289,048 | \$ 246,890 | \$ 274,017 | \$ 276,926 | \$ 321,152 | \$ 267,372 |
| Totals | \$ 1,874,560 | \$ 1,478,355 | \$ 1,546,225 | \$ 1,534,641 | \$ 1,480,845 | \$ 1,558,535 | \$ 1,661,357 | \$ 1,508,183 | \$ 1,603,628 | \$ 1,652,573 | \$ 1,721,282 | \$ 1,611,306 |

Cost Per Mile February 2012

| Cost per mile: | Mar-11 | Apr-11 | May-11 | Jun-11 | Jul-11 | Aug-11 | Sep-11 | Oct-11 | Nov-11 | Dec-11 | Jan-12 | Feb-12 | Average |
|----------------|--------|--------|--------|--------|--------|--------|--------|--------|--------|--------|--------|--------|---------|
| Blue Line | \$2.12 | \$2.50 | \$1.83 | \$1.88 | \$1.54 | \$1.99 | \$2.17 | \$1.80 | \$1.91 | \$1.74 | \$1.75 | \$1.82 | \$1.92 |
| Red Line | \$1.67 | \$1.90 | \$1.48 | \$1.93 | \$1.29 | \$1.64 | \$1.55 | \$1.55 | \$1.47 | \$1.52 | \$1.57 | \$1.49 | \$1.59 |
| Green Line | \$2.47 | \$2.30 | \$1.74 | \$1.61 | \$1.66 | \$1.93 | \$2.08 | \$2.26 | \$2.43 | \$1.92 | \$2.12 | \$1.86 | \$2.03 |
| Gold Line | \$1.55 | \$1.35 | \$1.18 | \$1.18 | \$1.17 | \$1.39 | \$1.40 | \$1.26 | \$1.33 | \$1.51 | \$1.61 | \$1.40 | \$1.36 |



No facility costs are included

Absences vs. Overtime

February 2012

| ABSENCE TYPE and HOURS | 3940 | 3941 | 3942 | 3943 | 3944 | Total |
|--------------------------------------|--------------|---------------|---------------|--------------|--------------|---------------|
| AWP-ABSENT W/O PERMISSION | 0.00 | 0.00 | 0.00 | 0.00 | 0.00 | 0.00 |
| BER-BEREAVEMENT | 0.00 | 0.00 | 64.00 | 0.00 | 40.00 | 104.00 |
| CTO-COMPENSATORY TIME OFF | 8.00 | 307.00 | 405.10 | 108.00 | 190.00 | 1,018.10 |
| CUT-EMPLOYEE LEAVES EARLY | 1.00 | 1.97 | 0.00 | 0.80 | 1.98 | 5.75 |
| CVA - CASUAL VACATION | 8.00 | 0.00 | 181.00 | 56.00 | 100.00 | 345.00 |
| DSL-DISABILITY LEAVE/LONG | 0.00 | 504.00 | 672.00 | 232.00 | 336.00 | 1,744.00 |
| EFH-EMG. FLOAT HOL. | 0.00 | 0.00 | 32.00 | 24.00 | 24.00 | 80.00 |
| ETO-EXCUSED TIME OFF | 56.00 | 61.00 | 12.76 | 2.00 | 45.12 | 176.88 |
| FMI-FAM IND INJURY | 0.00 | 0.00 | 0.00 | 0.00 | 24.00 | 24.00 |
| FML-FAMILY CARE LEAVE | 8.00 | 328.00 | 154.00 | 55.83 | 64.00 | 609.83 |
| FMS-FAMILY LEAVE SICK | 8.00 | 71.50 | 78.80 | 30.00 | 50.80 | 239.10 |
| HLF-HOLIDAY FLOATING | 24.00 | 176.00 | 64.00 | 88.00 | 120.00 | 472.00 |
| II-INDUSTRIAL INJURY | 0.00 | 0.00 | 336.00 | 0.00 | 80.00 | 416.00 |
| IIR-INDUS INJURY-REOCCUR. | 0.00 | 21.00 | 0.00 | 0.00 | 0.00 | 21.00 |
| JUR-JURY DUTY | 8.00 | 48.00 | 40.00 | 0.00 | 0.00 | 96.00 |
| LC1-LABOR CODE 233 | 0.00 | 351.47 | 168.58 | 152.00 | 224.00 | 896.05 |
| LTI-OCCPIL/LONGTRM INJ LEAVE | 0.00 | 120.00 | 0.00 | 0.00 | 0.00 | 120.00 |
| MLN-MILITARY ABSENCE-UNPAID | 0.00 | 0.00 | 168.00 | 0.00 | 0.00 | 168.00 |
| OWP-OFF WITH PERMISSION | 0.00 | 0.00 | 8.00 | 16.00 | 0.00 | 24.00 |
| RTO-REQUESTED TIME OFF-NO PA | 0.00 | 20.00 | 0.00 | 49.13 | 0.00 | 69.13 |
| SCK-SICK PAY | 0.00 | 248.00 | 160.00 | 48.00 | 52.00 | 508.00 |
| SCW-SICK WITHOUT PAY | 0.00 | 120.00 | 0.00 | 72.00 | 16.00 | 208.00 |
| TAR-TARDY | 0.00 | 3.17 | 0.03 | 2.17 | 0.00 | 5.37 |
| VAC-VACATION | 40.00 | 434.00 | 345.00 | 240.00 | 215.50 | 1,274.50 |
| Total Absence Hours | 161 | 2,815 | 2,889 | 1,176 | 1,583 | 8,625 |
| Number of Work Force (assigned) | 31 | 117 | 107 | 48 | 52 | 355 |
| Full Work Force hours/month | 5,372 | 20,276 | 18,543 | 8,318 | 9,012 | 61,522 |
| Absence as a % of Work Force | 3% | 14% | 16% | 14% | 18% | 14% |
| | | | | | | |
| OVERTIME TYPE and HOURS | 3940 | 3941 | 3942 | 3943 | 3944 | Total |
| CTB-COMPENSATORY TIME TO BANK | 0 | 116 | 173 | 41 | 76 | 406 |
| OTP-PREM OVERTIME | 539 | 2946 | 4247 | 946 | 945 | 9624 |
| WLO-Worked Lunch Overtime | 2 | 41 | 149 | 66 | 62 | 318 |
| Total | 541 | 3104 | 4568 | 1053 | 1082 | 10348 |
| Overtime as a % of Work Force | 10% | 15% | 25% | 13% | 12% | 17% |
| | | | | | | |
| UNCOVERED ABSENCES | 3940 | 3941 | 3942 | 3943 | 3944 | Total |
| Absences FTE | 1 | 16 | 17 | 7 | 9 | 50 |
| OTP FTE | 3 | 18 | 26 | 6 | 6 | 60 |
| FTE Difference | -2 | -2 | -9 | 1 | 3 | -10 |

Rail Vehicle Engineering Project Summary

February 2012

| Preparation of Engineering Technical Specifications | Tracking # | Status |
|---|------------------------------|--|
| Red Line AC Gear Box (Rev. 0) | A650/TS/026 | Draft in Progress |
| DC Air Compressor Motor Overhaul | P865/P2020-TS-057 | Released to Procurement for bid |
| Articulation Diaphragm | P865-P2020/TS/060 | Released - Out for bid |
| Powered Axle Overhaul SOW | P2000 SOW | Released - Reviewing bids |
| Vital Relay Calibration | P865-P2020/TS/061 | In Revising Process |
| Windows glass and rubber glazing specification | P865-P2020/TS-xx | Draft in Progress |
| Friction Brake Kit Less Air Compressor Overhaul | P2000/TS/035 Rev 0 | Released to Procurement for bid |
| Center Truck Friction Brake Disc | P2000-TS-020 rev. 01 | Released to Procurement for bid |
| A650 Battery Specification | A650/TS/39 | Released to Procurement for bid |
| Powered Axle Overhaul SOW | P865-P2020/TS/xx | Draft in Progress - CH2M |
| Seat Insert | P865-P2020/TS/62 | Draft in Progress |
| Red Line DC Gear Box (Rev. 0) | P650/TS/040 | Draft in Progress |
| Vandal Shield for all lines | A650-P865-P2000-P2550/TS/012 | Released to Procurement for bid |
| Aux power supply equipment (APSE) - Static Inverter | P865-P2020/TS/xx | In progress - CH2M |
| General - All Lines | | Status |
| Roadway Worker Protection | | CPUC/Installing ProTran1 Device-P865/P2020/P2000/P2550 completed, A650 in process |
| Fleet Support, troubleshooting, and fix cars | | CH2M Hill |
| New Radios installed to replace old radios | | Meeting 3/7/2012-Contract awarded, prototype by end of March. |
| Bike Space | | P2000/P2550/A650 Fleet modification completed. |
| P2000 Overhaul Program | | Status |
| Master Controller - Bombardier Refurbish | | Ongoing Program |
| Slewing Ring | | Developing Overhaul Procedures - Completed |
| Wheel flats | | LB Foster prototype - Gill applicator testing |
| New LED Destination Signs | | Luminator Prototype approved - In process of developing spec for bid |
| RSS and EOSS Bundle Cables/Connectors - Glenair | | In Progress |
| Handicap Seat Modification using Velcro | | In Progress |
| CCH possible replacement (Focon) | | Send information to Focon |
| P865/P2020 Program | | Status |
| Static Inverter - Transtechnik | | Inverter running in revenue service for testing |
| Remotely reset CB1 Breaker | | Prototype was successfully tested. Procuring parts for fleet modification. |
| ABB Static Inverter | | On hold |
| "G" force measurement on Transponder installed on P865/P2020 | | H&K installed "G" sensor on transponder and collected data for analysis - 03/08/12 |
| Traction Motor Cleaning Procedure | | In Progress |
| HVAC Compressor Overhaul | | In Progress |
| P3010 | | Status |
| 78 New Light Rail Vehicle | | Solicitation completed |
| P2000 Gold to Green | | Status |
| Signal package conversion (Gold to green) | | On-hold |
| A650 Overhaul Program | | Status |
| Midlife Overhaul Specification | | Specification Complete. On hold - Re-assessing. |
| HPT Upgrade | | Wabtec Proposal received - Production run prototype by mid April |
| AB New Traction Motor Mount | | Prototype was accepted. AB for Fleet Modification in progress. |
| Friction Brake Kit Overhaul | | Overhaul program in place - Wabtec (30 Base cars were added and approved) |
| Hand Rail - Bike Area | | Fleet modification completed. |
| Ribbed Rubber Flooring PRF | | Dealing with OEM and Bultar |
| Door Operator Gearbox and Rollers Overhaul | | In Progress |
| P2550 | | Status |
| Vehicle Acceptance | | Forty cars have been Final Accepted and eight cars are Conditionally Accepted. |
| Gearbox Seepage/Leakage investigation | | Dealing with OEM, O-ring issues |
| Parking Brake(PB) Cable (VPS) | | Final Approval in Process |
| 3P Flip Up Seat Finger Guard | | Submitted SS to Procurement - Testori |
| Find alternative Vendor for Reverse Engineer PCB Boards P2550 | | In process |
| Compressor Dessicant Material | | In Progress |
| Rubber Boots (High Voltage) | | In Progress |
| Cyclope light Glass | | In Progress |
| Ground Brush Schunk (Lamellar Seal failure investigation) | | In Progress |
| Expo | | Status |
| Readiness | | Metro-RFS Engineering is supporting qualification and test activities of vehicles and wayside. |
| ATP Certification | | Mainline Testing Completed; waiting for final letter |
| Junction of Blue line and Expo line Testing | | Signal Test support in progress |

P2550 Vehicle Acceptance Program

February 2012

Vehicle Status Update:

- Metro has received 48 cars with all 48 being final accepted.
- Two prototype cars remain at contractor's assembly site in Pittsburg and are being updated to the latest configuration.

Engineering Activities Update:

- Event recorder: Configuration continues to be finalized; however, on-site support from contractor and supplier is required to resolve final technical issues. Faiveley-France is targeted to be on site in near future to expedite qualification and provide training.
- Decelerometer Failures: Supplier completed internal qualification to replace those on the fleet.

Production Car Status – Pittsburg:

- Cars 701& 702 - Reconfiguration of cars is in process. These cars are now targeted to ship to Los Angeles by April 2012.

Project Management:

- Contract spares continue to be delivered to Metro and estimated to be 85% complete. All parts needed for day-to-day maintenance have been received. Critical parts needed for heavy repairs are scheduled to begin arriving in Q2 2012.
- Daily and bi-weekly meetings are scheduled with contractor management to address project issues.

QA-Warranty Program Projects Summary

February 2012

QA-WARRANTY ACTIVITIES:

- Glen Siaumau (REMS) was assigned to the QA-Warranty Department. Upon completion of indoctrination, he will be assigned to QA-Warranty oversight P2550 Vehicles.
- On-Going: P2550 Car Mod Campaign/Testing Oversight, Component Reliability Trend Tracking.
- On-Going: P2550 parts tracking: Contract Spares, Capital Spares, Warranty Spares and Metro Loaned Parts.
- On-Going: P2550 generate repair warranty claims.
- On-Going: A650 Base Buy & Option car fleets – Warranty repair work, Truck Frame & T/M Mount Mod Campaign (34 trucks of 232 modified to date). The MRL Cost Avoidance savings accrued to date is \$159,856.00.
- Conducted QA First Article Inspections and Investigations (26).
- CCTV Video Downloads – 11 hours
- Technical support, Expo Line ATP/TWC Project, Cab Signal, TWC Over Speed No Power readiness testing.
- Overhauls / Mod Programs, (A650/P2000/P2020/865) Propulsion System, Master Controllers, Capacitor Banks, Air Compressors, Aux Power, Couplers, Gearboxes, Articulation Diaphragms, Friction Brakes, HPT's, Brake Resistor Grids, T/M's, MA's, HVAC, Doors, A/C Motors – (Blowers & Evaporators)
- Total Warranty Cost Avoidance accrued at all divisions for 2012 (\$200,669.08).
- HR Manpower and TCU Chairman: Discussions are ongoing concerning Equipment Record Specialist (ERS) roster separation (Bus from Rail) in March. John Scott will re-address issues with TCU President.
- Administration: Continue to archive all reports and records to QA-Warranty's share drive.

RFS Instruction Department Activities February 2012

Training classes completed during the month of February 2012

| Description | Course Hours | Student Count | Training Hours |
|---|--------------|---------------|---------------------|
| <u>Blue & Expo Line Training - (P865/2020 & P2000 LRV):</u> | | | |
| RFS SIEMENS 2000 T/B, SANDERS | 8 | 5 | 40 |
| RFS SIEMENS 2000 TRUCK | 32 | 5 | 160 |
| RFS SIEMENS 2000 PROPULSION | 16 | 5 | 80 |
| Total Blue Line Training (Hours): | | | 280 |
| <u>Red Line Training (Breda A650 HRV):</u> | | | |
| REFRIGERANT RECOVERY SYSTEMS (608) | 16 | 4 | 64 |
| RFS BRED A 650 HVAC REFRESHER | 24 | 4 | 96 |
| Total Red Line Training (Hours): | | | 160 |
| <u>Green Line Training (P2000 LRVs):</u> | | | |
| RFS SIEMENS 2000 T/B, SANDERS | 8 | 1 | 8 |
| RFS SIEMENS 2000 TRUCK | 32 | 1 | 32 |
| RFS SIEMENS 2000 PROPULSION | 16 | 1 | 16 |
| Total Green Line Training (Hours): | | | 56 |
| <u>Total RFS Instruction for the month of February 2012 (Hours):</u> | | | <u>336.0</u> |
| <u>Other Instruction Activities</u> | | | |
| RFS 2-WEEK RAIL INTRODUCTION | 80 | 6 | 480 |
| Red Line Technical Support | | | 160 |
| Gold Line Technical Support | | | 160 |

Total Other Instruction Activities

800.0

Core Vehicle Training Completed: BLUE RED GREEN GOLD

| | | | | |
|--|--------------|--------------|--------------|--------------|
| Percentage of core vehicle training complete: | 80.4% | 99.5% | 97.2% | 93.9% |
| Siemens P2000 training complete: | 40.8% | N/A | N/A | N/A |

Average Specialist Rail Experience Level in Years: 10.6 10.5 9.4 10.1

Core Training Completed

