



Rail Fleet Services Monthly Report January 2012

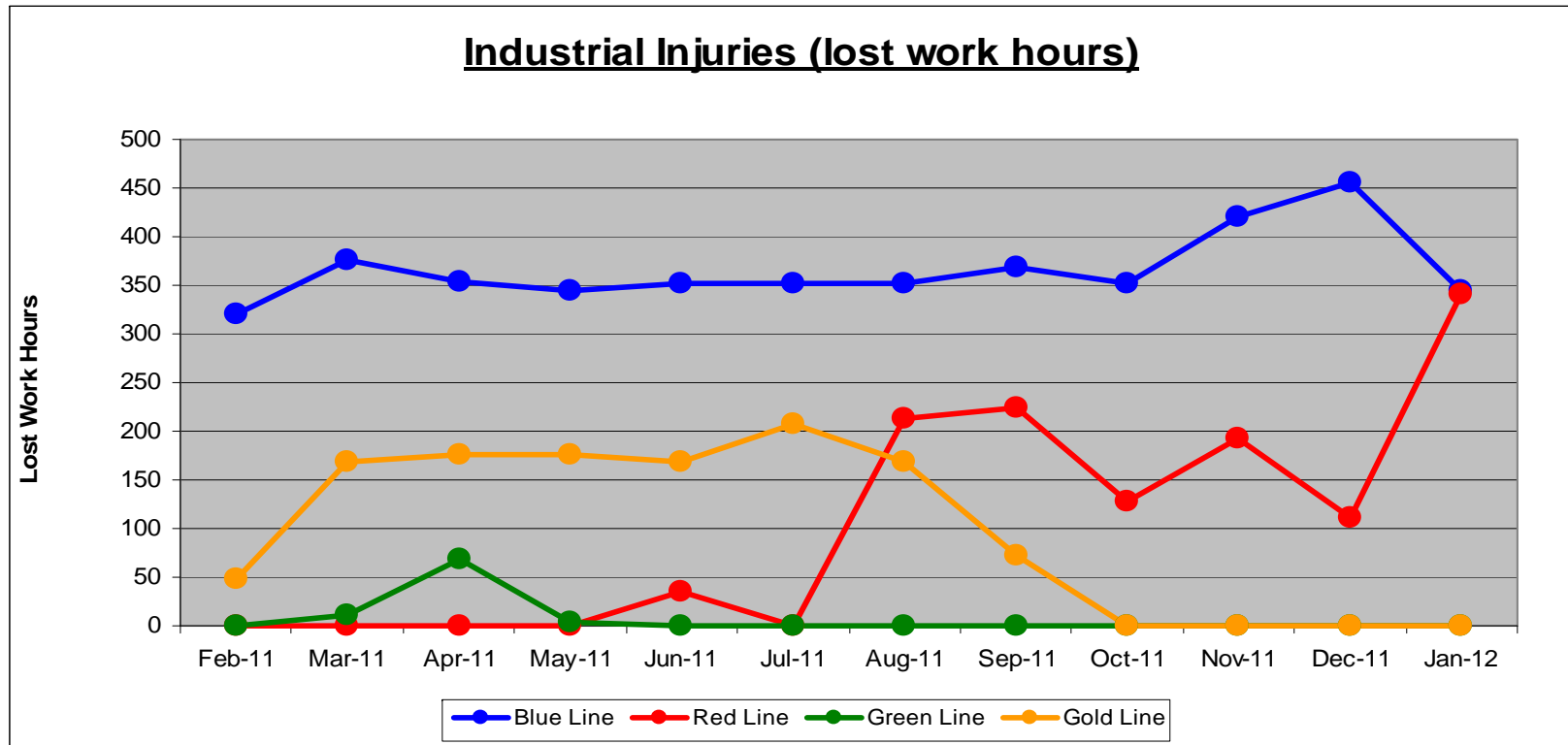


Metro

Table of Contents

•	Safety	
	- Industrial Injuries	Page 3
	- Rail Vehicle Accidents & Major Incidents	Page 4
•	Customer Service	
	- Service Delivery – AM/PM Pull-Outs	Page 5
	- Vehicle Utilization – Blue Line & Green Line	Page 6
	- Vehicle Utilization – Red Line & Gold Line	Page 7
	- Mean Miles Between Failures (Major)	Page 8
	- Repeat Failures	Page 9
•	Business Processes	
	- Major Incidents	Page 10
	- Preventive Maintenance Compliance	Page 11
•	Finance	
	- Vandalism & Graffiti Costs	Page 12
	- Graffiti Pictures	Page 13
	- Material & Labor Costs	Page 14
	- Cost per mile	Page 15
	- Absence vs. Overtime	Page 16
•	Engineering	
	- Rail Vehicle Engineering Project Summary	Page 17
	- P2550 Vehicle Acceptance Program	Page 18
•	Quality Assurance	
	- Warranty Program Projects Summary	Page 19
•	Growth	
	- RFS Instruction Department Activities	Page 20

Industrial Injuries – Lost Work Hours January 2012



	Employees		January 2012 Lost Work Hours			
	Assigned	Active	Service Attendant	Maint. Specialist	Body Repairer /Painter	Total Hrs.
Blue Line	114	107	176	0	168	344
Red Line	107	97	340	0	0	340
Green Line	48	45	0	0	0	0
Gold Line	52	51	0	0	0	0
Eng/QA/Admin	31	31				0
Totals	352	331	516	0	168	684

Rail Vehicle Accidents & Major Incidents

January 2012

Repair Costs	Feb-11	Mar-11	Apr-11	May-11	Jun-11	Jul-11	Aug-11	Sep-11	Oct-11	Nov-11	Dec-11	Jan-12	Totals
Blue Line	\$2,114	\$684	\$26,990	\$4,844	\$189	\$0	\$395	\$7,337	\$888	\$16,188	\$1,199	\$4,704	\$65,532
Red Line	\$0	\$0	\$0	\$0	\$0	\$0	\$0	\$0	\$0	\$0	\$0	\$0	\$0
Green Line	\$0	\$0	\$0	\$0	\$0	\$0	\$0	\$0	\$0	\$0	\$0	\$0	\$0
Gold Line	\$13	\$4,031	\$0	\$0	\$5,458	\$3,763	\$2,567	\$0	\$320	\$0	\$0	\$0	\$16,152
Totals	\$2,127	\$4,715	\$26,990	\$4,844	\$5,647	\$3,763	\$2,962	\$7,337	\$1,208	\$16,188	\$1,199	\$4,704	\$81,684

Rail Vehicle Accident Costs - January 2012				
Metro Blue Main Line				
Date	Incident #	Problem code	Incident Description	Cost
1/3/2012	2121990	Train vs. Pedestrian	Train No. 8 operator reports being involved in a 10-72 at Spring Street grade crossing.	\$640.00
1/6/2012	2123505	Train vs. Object	Train No. 14 operator involved in a 10-71 train vs. bicycle at Vernon on Track 2.	\$113.00
1/9/2012	2124944	Train vs. Vehicle	Train No. 13 operator was involved in a hit and run (10-73) at 20th Street and Long Beach Blvd.	\$2,739.00
1/17/2012	2127392	Train vs. Pedestrian	Train No. 12 operator reported making contact with a male pedestrian at Florence Street.	\$42.00
1/18/2012	2128026	Train vs. Vehicle	Train No. 16 operator reports being involved in a 10-73 at Washington and Central.	\$1,170.00
GRAND TOTAL				\$4,704.00
(10-71) = Train vs. Object, (10-72) = Train vs. Pedestrian, (10-73) = Train vs. Vehicle (10-74) = Train vs. MTA Vehicle, (10-75) = Derailment				

Service Delivery January 2012

Blue Line – Fleet Size 69 cars

	<u>Vehicles Required</u>	<u>Average Available</u>	<u>% Up (Down)</u>
<u>Pull Out</u>			
Weekday:	60	64	107%
Weekend:	36	45	124%

Late Pullouts: 0 *

Monthly Mileage: 486,441 miles

Expo Line – Fleet Size 21 cars

Expo Revenue Operations Date (ROD) to be determined.

Red Line - Fleet Size 104 cars

	<u>Vehicles Required</u>	<u>Average Available</u>	<u>% Up (Down)</u>
<u>Pull Out</u>			
Weekday:	70	80	114%
Weekend:	48	64	132%

Late Pullouts: 0 *

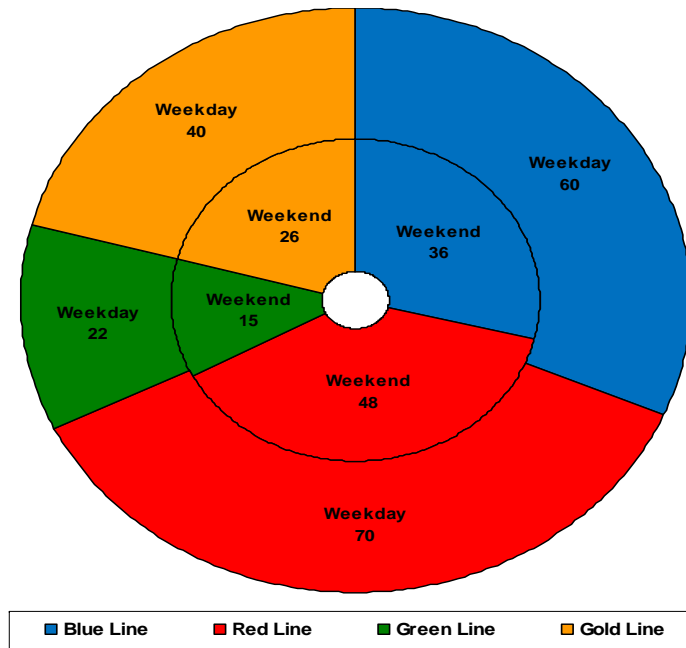
Monthly Mileage: 571,924 miles

Green Line – Fleet Size 29 cars

	<u>Vehicles Required</u>	<u>Average Available</u>	<u>% Up (Down)</u>
<u>Pull Out</u>			
Weekday:	22	24	111%
Weekend:	15	18	121%

Late Pullouts: 0 *

Monthly Mileage: 231,165 miles



Gold Line – Fleet Size 50 cars

P2550 – Fleet Size 48 cars

P2000 – Fleet Size 2 cars

	<u>Vehicles Required</u>	<u>Average Available</u>	<u>% Up (Down)</u>
<u>Pull Out</u>			
Weekday:	40	41	103%
Weekend:	26	39	152%

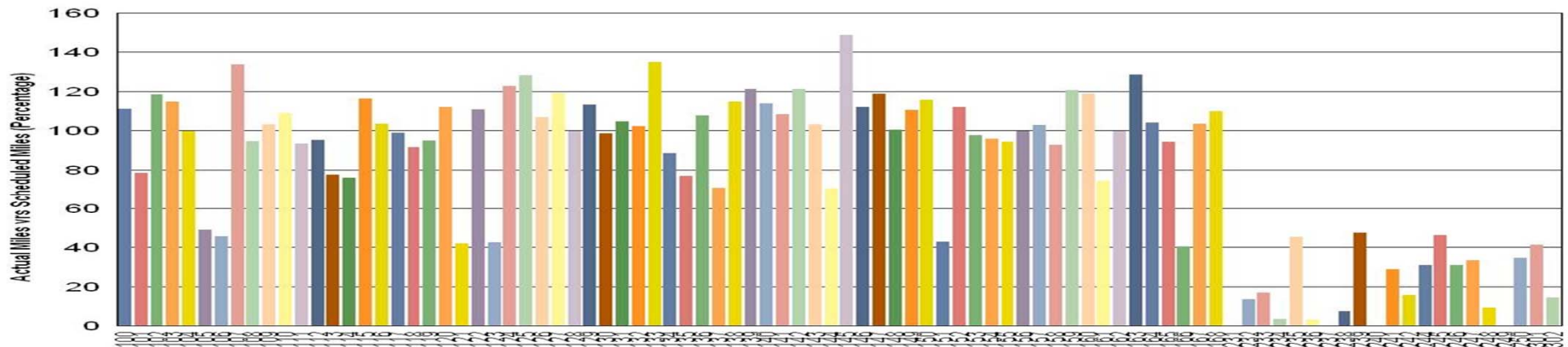
Late Pullouts: 0 *

Monthly Mileage: 294,065 miles

* Due to a vehicle related problem

Vehicle Utilization January 2012

Metro Blue/Expo Line Fleet



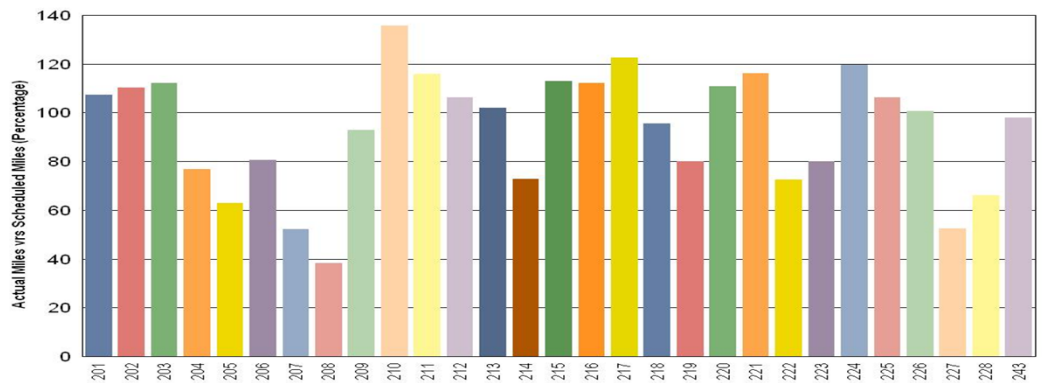
Blue Line:

All vehicles listed below the 40% mark are vehicles run on the Expo line and are low on mile usage.

Green Line:

208 Vehicle out of service due to ATP and bypass station problems.

Metro Green Line



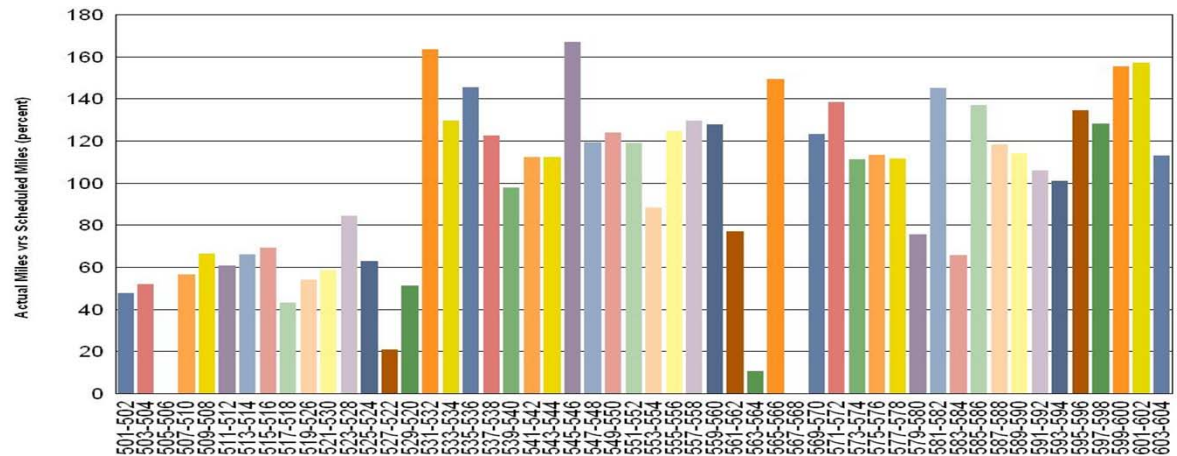
Vehicle Utilization January 2012

Red Line:

Explanation for under-used vehicles:

- 505-506 Vehicle continues to have refurbishment and trouble-shooting issues due to propulsion problems.
- 527-522 Vehicle requires 90k Preventive Maintenance service and major inspections.
- 563-564 Vehicle is a repeater car with friction brake issues requiring simulated service testing after repairs are completed (repeater process).
- 567-568 Vehicle is waiting on equipment (batteries) to be delivered in February.

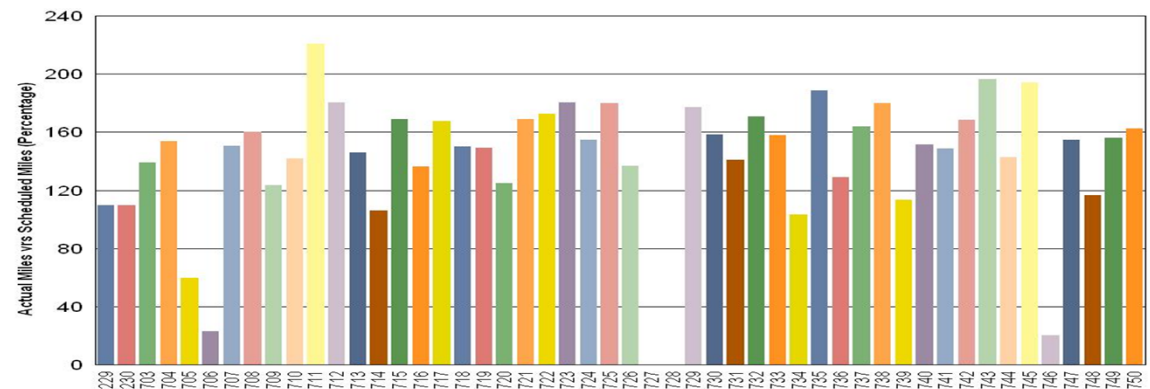
Metro Red Line



Gold Line:

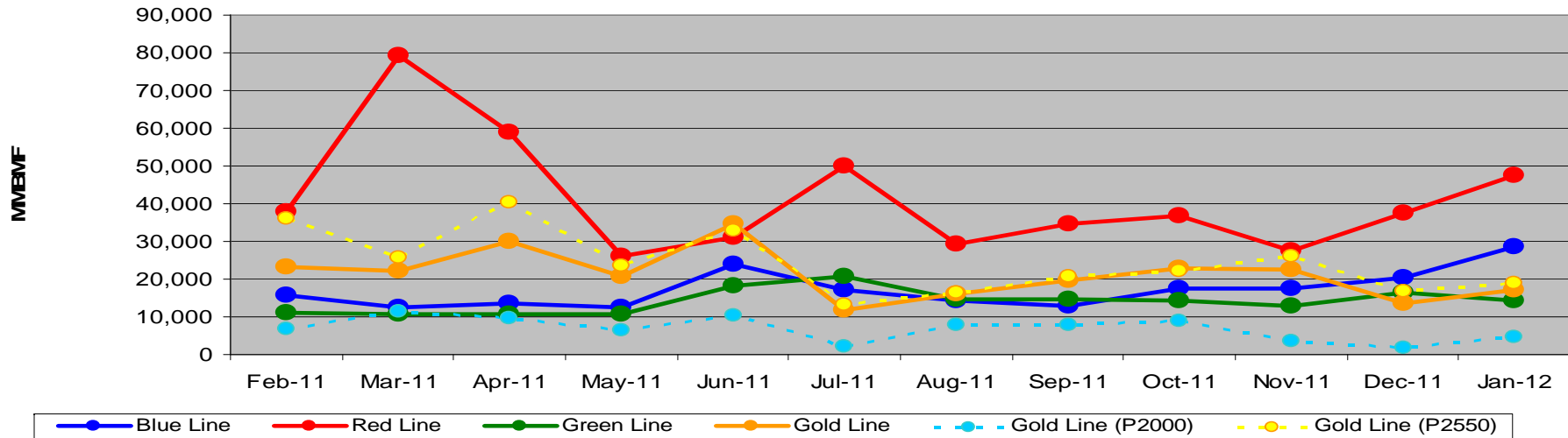
- 706 Problem with the seals (Lamellar) in the speed sensor housing unit requiring vehicle to be taken out of service.
- 727 Vehicle experienced an overload in the mid-voltage (208V) power supply which burned a wire harness.
- 728 Vehicle continues to be out of service due to a yard derailment in July.
- 746 Vehicle experienced an overload in the mid-voltage (208V) power supply which burned a wire harness.

Metro Gold Line



Mean Miles Between Failures (Major) Year to Date

Mean Miles Between Major Failures (12 months)

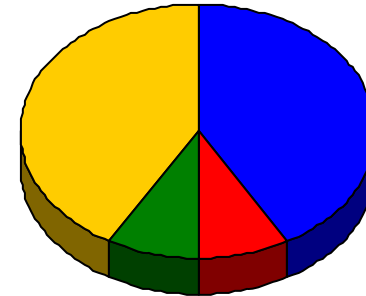


	Feb-11	Mar-11	Apr-11	May-11	Jun-11	Jul-11	Aug-11	Sep-11	Oct-11	Nov-11	Dec-11	Jan-12
Blue Line	15,601	12,500	13,483	12,557	24,050	17,123	14,425	12,679	17,397	17,322	20,187	28,614
Red Line	37,732	79,178	59,089	26,084	30,932	50,099	29,298	34,535	36,745	27,358	37,551	47,660
Green Line	11,163	10,687	10,787	10,882	18,177	20,877	14,482	14,740	14,148	13,029	16,379	14,448
Gold Line	23,095	22,044	30,145	20,776	34,792	11,668	15,906	19,647	22,773	22,340	13,743	17,298
Gold Line (P2000)	6,689	11,413	9,625	6,377	10,351	2,153	8,019	7,872	8,887	3,509	1,639	4,638
Gold Line (P2550)	36,220	25,588	40,404	23,394	32,767	13,095	16,370	20,553	22,032	26,107	16,769	18,986

Major Failure: When a train does not complete its scheduled run or is more than 5 minutes late of its scheduled arrival time.

Repeat Failures January 2012

Metro Blue Line: 5 Repeat Failures
Metro Red Line: 1 Repeat Failures
Metro Green Line: 1 Repeat Failures
Metro Gold Line: 5 Repeat Failures



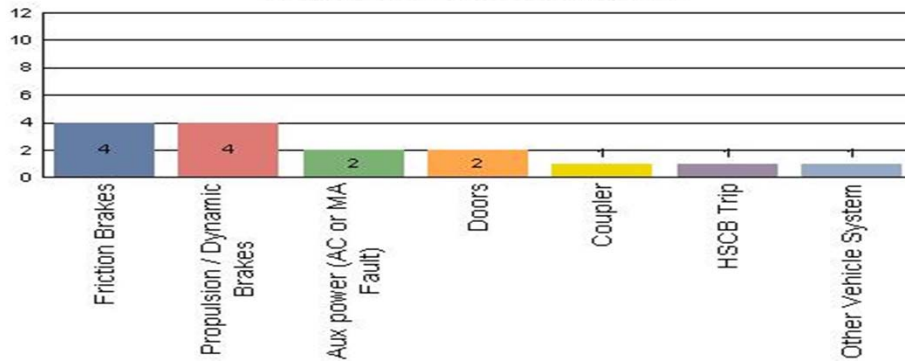
■ Blue Line
 ■ Red Line
 ■ Green Line
 ■ Gold Line

Repeater Car Details - January 2012								
System	Blue Line		Red Line		Green Line		Gold Line	
	Car #	Repeats	Car #	Repeats	Car #	Repeats	Car #	Repeats
ATP							705	1
Car Body							707	1
Doors	101	1					748	2
	135	4						
Propulsion/Dynamic Brake			580	1	227	1		
Truck/Wheel/Flats							721	1
TOTALS	5		1		1		5	

Major Incidents January 2012

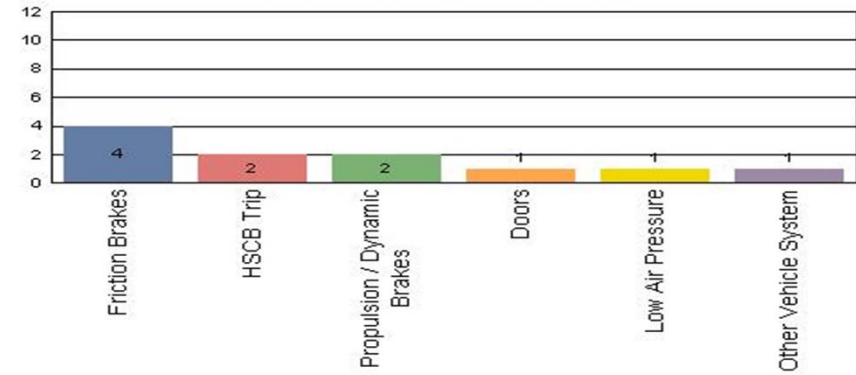
Metro Blue Line

Top Incident Categories



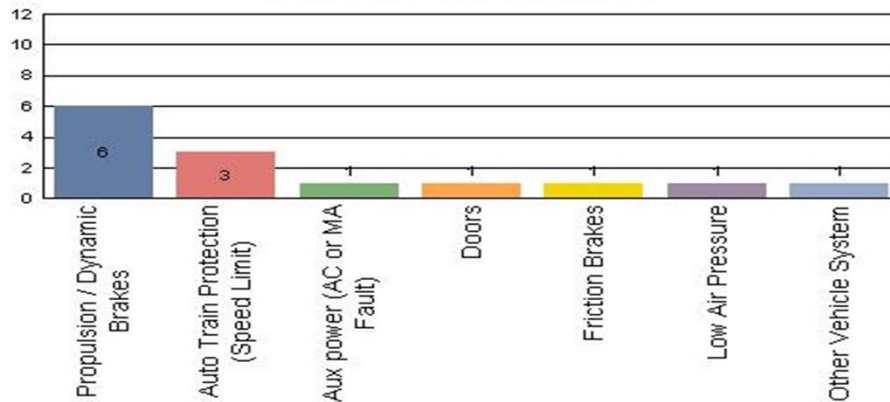
Metro Red Line

Top Incident Categories



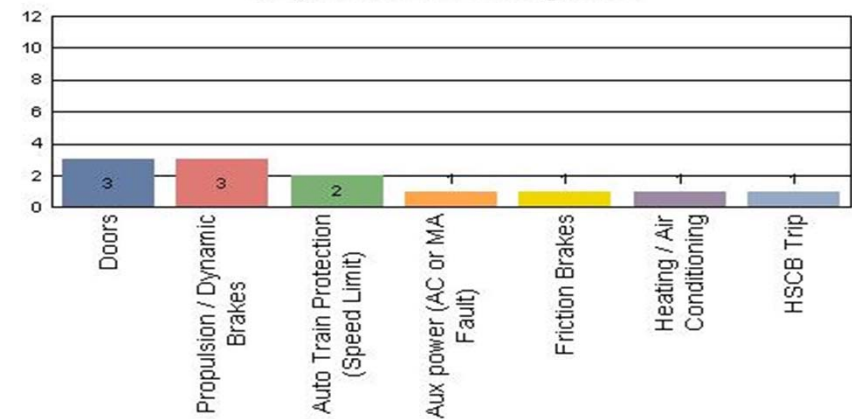
Metro Green Line

Top Incident Categories



Metro Gold Line

Top Incident Categories



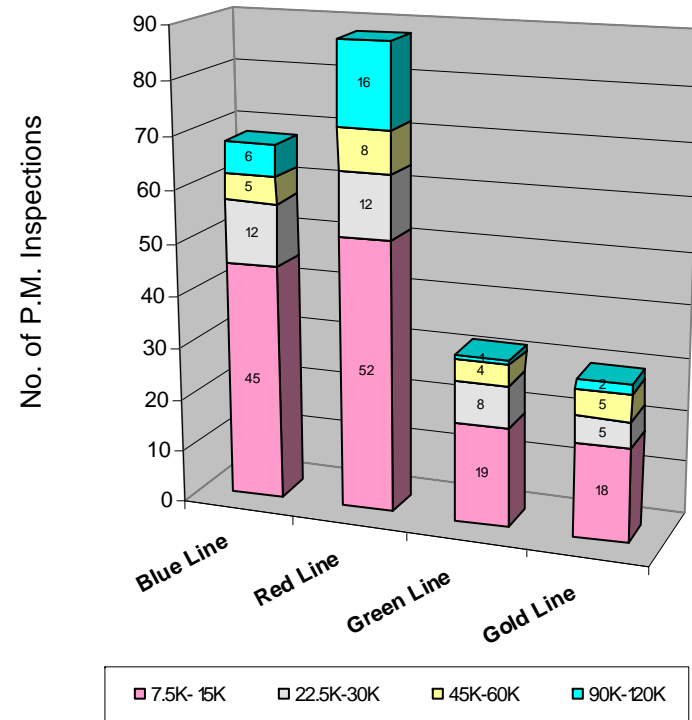
Preventive Maintenance Compliance

January 2012

PM Compliance	Feb-11	Mar-11	Apr-11	May-11	Jun-11	Jul-11	Aug-11	Sep-11	Oct-11	Nov-11	Dec-11	Jan-12
Blue Line	100%	100%	100%	100%	100%	100%	100%	100%	100%	100%	100%	100%
Red Line	97%	100%	100%	90%	100%	100%	100%	100%	100%	100%	100%	100%
Green Line	100%	100%	100%	100%	100%	100%	100%	100%	100%	100%	96%	100%
Gold Line	100%	100%	100%	100%	100%	100%	100%	100%	100%	100%	100%	100%

January 2012 Preventive Maintenance Inspections

No. of P.M. Inspections	7.5K- 15K	22.5K-30K	45K-60K	90K-120K	Totals
Blue Line	45	12	5	6	68
Red Line	52	12	8	16	88
Green Line	19	8	4	1	32
Gold Line	18	5	5	2	30
Totals:	134	37	22	25	218

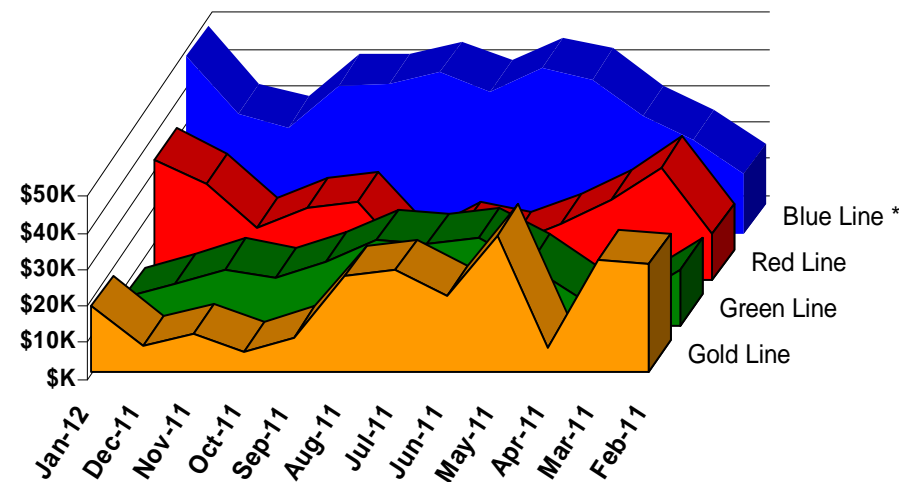


Vandalism & Graffiti Report

January 2012

	Feb-11	Mar-11	Apr-11	May-11	Jun-11	Jul-11	Aug-11	Sep-11	Oct-11	Nov-11	Dec-11	Jan-12	Year-to-Date
Blue Line *	\$16K	\$26K	\$32K	\$42K	\$45K	\$39K	\$44K	\$41K	\$41K	\$29K	\$33K	\$49K	\$437K
Red Line	\$12K	\$31K	\$22K	\$15K	\$10K	\$13K	\$6K	\$21K	\$20K	\$14K	\$26K	\$33K	\$223K
Green Line	\$15K	\$7K	\$8K	\$16K	\$24K	\$22K	\$23K	\$17K	\$13K	\$15K	\$11K	\$8K	\$181K
Gold Line	\$29K	\$31K	\$7K	\$37K	\$21K	\$28K	\$26K	\$9K	\$5K	\$10K	\$7K	\$18K	\$228K
Totals:	\$73K	\$94K	\$68K	\$111K	\$100K	\$102K	\$99K	\$89K	\$78K	\$69K	\$77K	\$107K	\$1,068K

January 2012 Vandalism & Graffiti - All Rail				
	Qty	Labor	Materials	Totals
Windows replaced	41	\$5,229	\$5,749	\$10,978
Vandal Shields	850	\$23,074	\$9,141	\$32,215
Seats Cleaned	902	\$2,437	\$0	\$2,437
Seats Replaced	395	\$12,419	\$9,481	\$21,900
Graffiti removal - other	750	\$19,556	\$450	\$20,006
Repainting panels	26	\$16,379	\$2,870	\$19,249
Totals	2,964	\$79,094	\$27,691	\$106,785



* Blue Line totals include vandalism & graffiti removal from the P2000 cars that will soon be used on the Expo Line.

Graffiti Pictures January 2012

Blue Line



Green Line



Gold Line

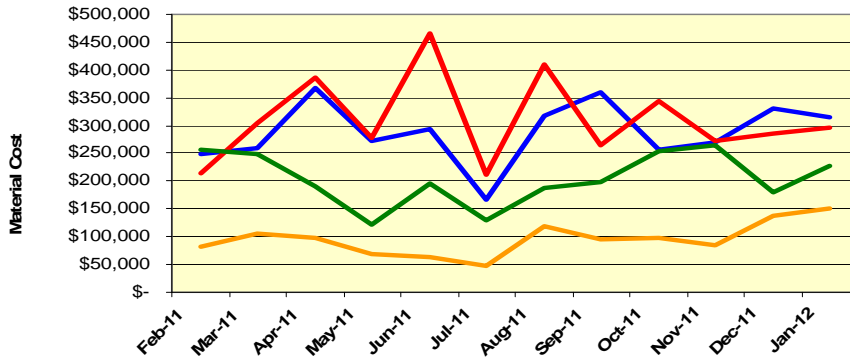


Material and Labor Costs

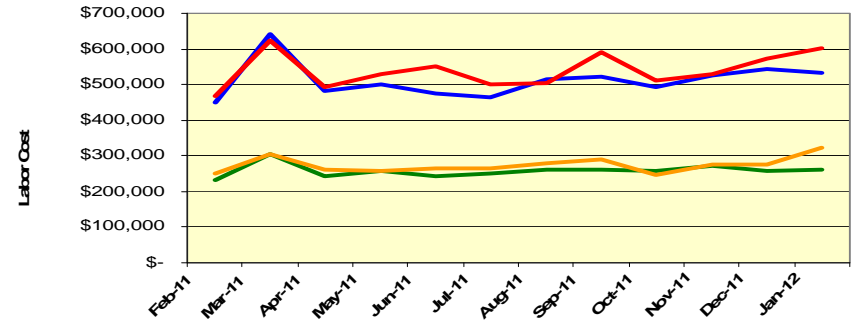
January 2012

<u>MATERIALS</u>	Feb-11	Mar-11	Apr-11	May-11	Jun-11	Jul-11	Aug-11	Sep-11	Oct-11	Nov-11	Dec-11	Jan-12
Blue Line	\$ 249,678	\$ 259,887	\$ 368,467	\$ 272,272	\$ 294,179	\$ 167,328	\$ 318,296	\$ 359,508	\$ 256,152	\$ 268,760	\$ 331,976	\$ 315,214
Red Line	\$ 213,323	\$ 305,345	\$ 386,455	\$ 277,113	\$ 466,346	\$ 212,074	\$ 410,299	\$ 263,808	\$ 344,563	\$ 272,291	\$ 285,916	\$ 296,353
Green Line	\$ 255,578	\$ 247,907	\$ 189,460	\$ 121,859	\$ 194,750	\$ 129,976	\$ 187,997	\$ 198,811	\$ 254,691	\$ 265,489	\$ 180,929	\$ 227,110
Gold Line	\$ 82,141	\$ 105,452	\$ 96,824	\$ 67,967	\$ 64,397	\$ 47,760	\$ 118,401	\$ 94,967	\$ 98,380	\$ 83,425	\$ 138,599	\$ 150,971
Totals	\$ 800,720	\$ 918,591	\$ 1,041,206	\$ 739,212	\$ 1,019,672	\$ 557,138	\$ 1,034,993	\$ 917,095	\$ 953,786	\$ 889,965	\$ 937,420	\$ 989,648

Material Costs



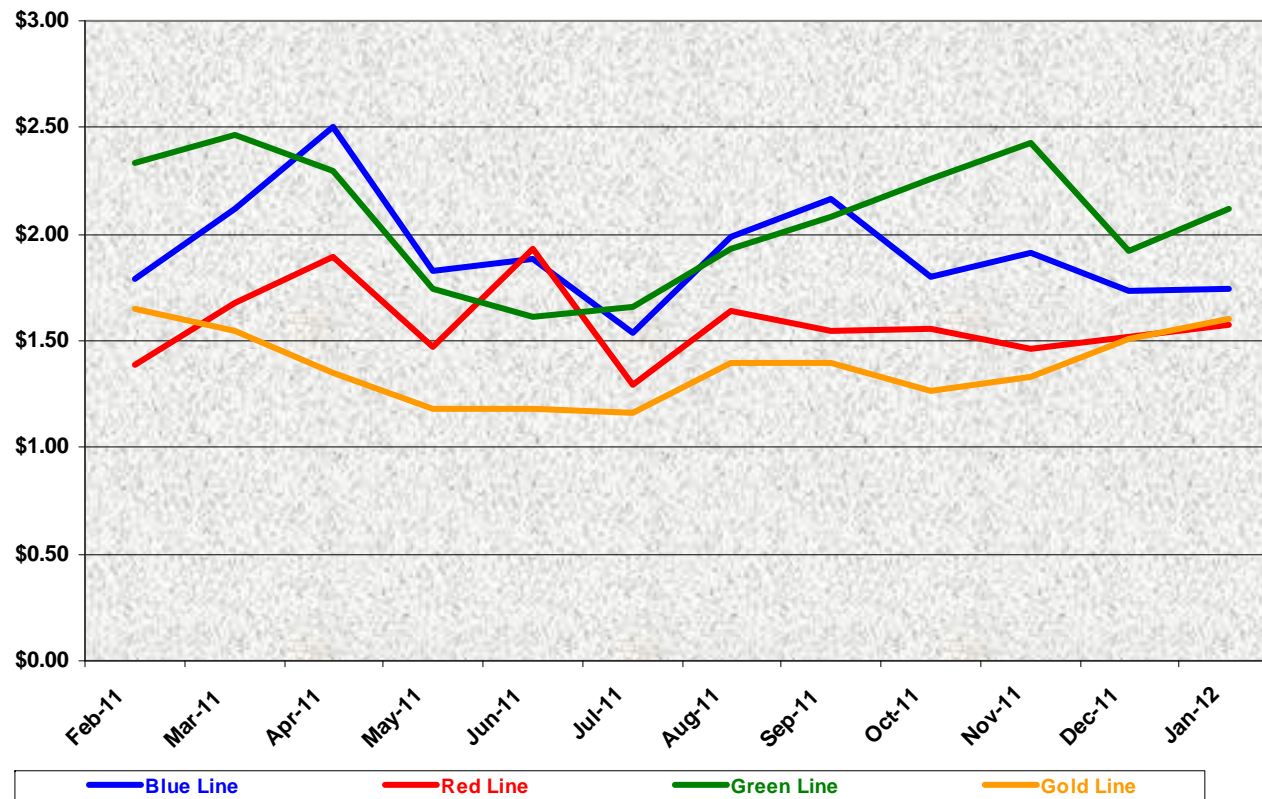
Labor Costs



<u>LABOR</u>	Feb-11	Mar-11	Apr-11	May-11	Jun-11	Jul-11	Aug-11	Sep-11	Oct-11	Nov-11	Dec-11	Jan-12
Blue Line	\$ 447,928	\$ 642,540	\$ 480,658	\$ 500,263	\$ 475,354	\$ 464,468	\$ 513,406	\$ 520,526	\$ 493,739	\$ 526,600	\$ 544,564	\$ 534,797
Red Line	\$ 467,849	\$ 622,201	\$ 493,104	\$ 531,171	\$ 550,464	\$ 500,504	\$ 504,785	\$ 589,986	\$ 510,944	\$ 530,408	\$ 571,885	\$ 602,770
Green Line	\$ 230,329	\$ 305,821	\$ 244,809	\$ 257,678	\$ 243,969	\$ 250,617	\$ 259,629	\$ 261,796	\$ 256,610	\$ 272,603	\$ 259,198	\$ 262,863
Gold Line	\$ 248,537	\$ 303,998	\$ 259,784	\$ 257,114	\$ 264,854	\$ 265,256	\$ 280,715	\$ 289,048	\$ 246,890	\$ 274,017	\$ 276,926	\$ 321,152
Totals	\$ 1,394,643	\$ 1,874,560	\$ 1,478,355	\$ 1,546,225	\$ 1,534,641	\$ 1,480,845	\$ 1,558,535	\$ 1,661,357	\$ 1,508,183	\$ 1,603,628	\$ 1,652,573	\$ 1,721,582

Cost Per Mile January 2012

Cost per mile:	Feb-11	Mar-11	Apr-11	May-11	Jun-11	Jul-11	Aug-11	Sep-11	Oct-11	Nov-11	Dec-11	Jan-12	Average
Blue Line	\$1.79	\$2.12	\$2.50	\$1.83	\$1.88	\$1.54	\$1.99	\$2.17	\$1.80	\$1.91	\$1.74	\$1.75	\$1.92
Red Line	\$1.39	\$1.67	\$1.90	\$1.48	\$1.93	\$1.29	\$1.64	\$1.55	\$1.55	\$1.47	\$1.52	\$1.57	\$1.58
Green Line	\$2.34	\$2.47	\$2.30	\$1.74	\$1.61	\$1.66	\$1.93	\$2.08	\$2.26	\$2.43	\$1.92	\$2.12	\$2.07
Gold Line	\$1.65	\$1.55	\$1.35	\$1.18	\$1.18	\$1.17	\$1.39	\$1.40	\$1.26	\$1.33	\$1.51	\$1.61	\$1.38



No facility costs are included

Absences vs. Overtime

January 2012

ABSENCE TYPE and HOURS	3940	3941	3942	3943	3944	Total
AWP-ABSENT W/O PERMISSION	0.00	0.00	8.00	0.00	0.00	8.00
BER-BEREAVEMENT	0.00	0.00	24.00	80.00	0.00	104.00
CTO-COMPENSATORY TIME OFF	8.00	256.00	228.50	80.00	122.00	694.50
CUT-EMPLOYEE LEAVES EARLY	0.00	0.85	0.00	0.00	0.50	1.35
CVA - CASUAL VACATION	16.00	0.00	444.00	0.00	264.00	724.00
EFH-EMG. FLOAT HOL.	8.00	8.00	40.00	16.00	8.00	80.00
ETO-EXCUSED TIME OFF	7.50	61.50	9.78	1.00	39.97	119.75
FMI-FAM IND INJURY	0.00	0.00	4.00	0.00	0.00	4.00
FML-FAMILY CARE LEAVE	0.00	312.00	722.65	152.00	104.00	1,290.65
FMS-FAMILY LEAVE SICK	0.00	83.00	295.85	40.00	36.00	454.85
HLF-HOLIDAY FLOATING	64.00	272.00	160.00	88.00	40.00	624.00
HNP-HOLIDAY NOT PAID	0.00	0.00	0.00	8.00	8.00	16.00
HOL-HOLIDAY LEGAL	96.00	536.00	384.00	104.00	112.00	1,232.00
II-INDUSTRIAL INJURY	0.00	0.00	340.00	0.00	0.00	340.00
IPD-INJURED PARTIAL DAY	0.00	0.00	0.00	7.50	0.00	7.50
JUR-JURY DUTY	0.00	16.00	64.00	0.00	0.00	80.00
LC1-LABOR CODE 233	64.00	293.78	205.97	156.00	177.15	896.90
LTI-OCOPIL/LONGTRM INJ LEAVE	0.00	344.00	0.00	0.00	0.00	344.00
MLN-MILITARY ABSENCE-UNPAID	0.00	0.00	176.00	0.00	0.00	176.00
OWP-OFF WITH PERMISSION	0.00	0.00	4.00	0.00	4.00	8.00
RTO-REQUESTED TIME OFF	0.00	43.23	0.00	0.00	0.00	43.23
SCK-SICK PAY	40.00	72.00	147.00	152.00	72.00	483.00
SCW-SICK WITHOUT PAY	0.00	184.00	16.00	125.00	64.00	389.00
TAR-TARDY	0.00	2.16	0.24	3.98	0.05	6.43
VAC-VACATION	64.00	534.00	496.00	192.00	253.00	1,539.00
Total Absence Hours	368	3,019	3,770	1,205	1,305	9,666
Number of Work Force (assigned)	31	114	107	48	52	352
Full Work Force hours/month	5,372	19,756	18,543	8,318	9,012	61,002
Absence as a % of Work Force	7%	15%	20%	14%	14%	16%
OVERTIME TYPE and HOURS	3940	3941	3942	3943	3944	Total
CTB-COMPENSATORY TIME TO BANK	8	191	257	53	91	601
OTP-PREM OVERTIME	560	2390	3209	898	1075	8132
WLO-Worked Lunch Overtime	3	31	101	66	70	269
Total	570	2612	3567	1017	1235	9001
Overtime as a % of Work Force	11%	13%	19%	12%	14%	15%
UNCOVERED ABSENCES	3940	3941	3942	3943	3944	Total
Absences FTE	2	17	22	7	8	56
OTP FTE	3	15	21	6	7	52
FTE Difference	-1	2	1	1	1	4



Metro

Rail Vehicle Engineering Project Summary

January 2012

Preparation of Engineering Technical Specifications	Tracking #	Status
Red Line AC Gear Box (Rev. 0)	A650/TS/026	Draft in Progress
P2000 Doors (Rev. 0)	P2000/TS/029	Draft in Progress
Articulation Diaphragm	P865-P2020/TS/060	Final Metro Review
Powered Axle Overhaul SOW	P2000 SOW	Released - Out for bid
Vital Relay Calibration	P865/P2020/TS/061	In Revising Process
DC Air Compressor Motor Overhaul	P865/P2020-TS-057	Released
Friction Brake Kit Less Air Compressor Overhaul	P2000/TS/035	In Revising Process
Center Truck Friction Brake Disc	P2000-TS-020 rev. 01	Released
A650 Battery Specification	A650/TS/39	Draft in Progress
Powered Axle Overhaul SOW	P865-P2020/TS/xx	Draft in Progress
General - All Lines		Status
Roadway Worker Protection		CPUC/Installing ProTran1 Device on All Fleets
Fleet Support, troubleshooting, and fix cars		CH2M Hill
P2000 Overhaul Program		Status
Master Controller - Bombardier Refurbish		Ongoing Program
Slewing Ring		Developing Overhaul Procedures
Traction Motor Overhaul Bid		Solicitation completed - Bid goes to Swiger Coil - Board Approved
New LED Destination Signs		Luminator Prototype In-Service on Train Under 6 month Evaluation
Disable Automatic Sanding		Fleet Modification completed.
P865/P2020 Program		Status
5k vs 7.5K Preventative Maintenance Evaluation		Investigation in-process
Cobra Brake Pad Testing		Completed AWO test.
Static Inverter - Transtechnik		Inverter received back after upgrade and scheduled for installation and testing
EMI On CB1 Tripping		Investigation in-process
Traction Motor Overhaul		Solicitation completed - Bid goes to Dahl-Beck Electric - Board Approved
Remotely reset CB1 Breaker		
ABB Static Inverter		Calculation/system integration in process. Unit schedule for February 2012 delivery
P3010		Status
78 New Light Rail Vehicle		Solicitation is in progress.
P2000 Gold to Green		Status
Signal Package Conversion (Gold to Green)		On-Hold
A650 Overhaul Program		Status
Midlife Overhaul Specification		Specification Complete. On hold - Re-assessing.
Car 591/592		Propulsion Investigation Completed
HPT Upgrade		Wabtec Proposal in review by Metro
AB New Traction Motor Mount		Prototype was accepted. Working with AB for Fleet Modification.
Roll-Back Speed Sensor System		EB Reset Investigation
Friction Brake Kit Overhaul		Solicitation completed - Bid goes to Wabtec - Board Approved
Hand Rail - Bike Area		Prototype approved - Procurement buying parts for fleet modification
Ribbed Rubber Flooring PRF		Dealing with OEM and other sources
P2550		Status
Vehicle Acceptance		Forty cars have been Final Accepted and eight cars are Conditionally Accepted.
Bike Space		Modified Car 710 as Prototype, ADA approval is complete, awaiting for final plan and signage by Metro-Marketing and bike committee.
Expo		Status
Readiness		Metro-RFS Engineering is supporting qualification and test activities of vehicles and wayside.
ATP Certification		Mainline Testing Completed; waiting for final letter
Junction of Blue line and Expo line Testing		Signal Test support in progress



P2550 Vehicle Acceptance Program

January 2012

Vehicle Status Update:

- Metro has received 48 cars with all 48 being final accepted.
- Two prototype cars remain at contractor's assembly site in Pittsburg and are being updated to the latest configuration.

Engineering Activities Update:

- Event recorder: Configuration continues to be finalized; however, on-site support from contractor and supplier is required to resolve final technical issues. Faiveley-France is targeted to be on site in near future to expedite qualification and provide training.
- Decelerometer Failures: Supplier is currently qualifying replacement decelerometers to replace those on the fleet.

Production Car Status – Pittsburg:

- Cars 701& 702 - Reconfiguration of cars is in process with rewiring and repining of cables at 100% complete. These cars are now targeted to ship to Los Angeles by April 2012.

Project Management:

- Contract spares continue to be delivered to Metro and estimated to be 85% complete. All parts needed for day-to-day maintenance have been received. Critical parts needed for heavy repairs are scheduled to begin arriving in Q12012.
- Daily and bi-weekly meetings are scheduled with contractor management to address project issues.

QA-Warranty Program Projects Summary

January 2012

QA-WARRANTY ACTIVITIES

- Scheduled QA audits for the 2012 year with emphasis on conducting a cross over audit per quarter. Conducted (2) at MRL, NDT-UT Rail Wheels & Base Buy Gear Box Oil samplings.
- Performed P2550 Car Modification Campaign / testing oversight, Metro/ABI warranty meetings, tracking reliability trends to identify fleet failures, parts reimbursement & warranty man-hours review. On-Going
- A650 Base Buy & Option car fleet warranty – Truck Frame Modification Campaign (32 trucks of 232 modified to date). A MRL Cost Avoidance savings to date is \$129,856.00
- Conducted 3 QA First Article Inspections.
- CCTV Video Downloads – 16 hours
- Technical support, Expo Line ATP/TWC Project, Overhauls / Mod Programs, (A650/P2000/P2020/865) Friction Brakes, HPT's, Brake Resistor Grids, T/M's, MA's, ATP Vital Relays, ATP certification testing, CB1 Trips, HVAC, Doors, A/C Motors – (Blowers & Evaporators)
- For all Divisions Warranty Cost Avoidance for 2012 (\$73,429.88).
- HR Manpower & TCU Chairman, discussions ongoing for Equipment Record Specialist (ERS) roster separation (Bus from Rail) - No status
- Archived all reports and records onto QA-Warranty's Share Drive.

RFS Instruction Department Activities

January 2012

Training classes completed during the month of January 2012

Description	Course Hours	Student Count	Training Hours
<u>Blue & Expo Line Training - (P865/2020 & P2000 LRV):</u>			
RFS SIEMENS 2000 PROPULSION	64	5	320
Total Blue Line Training (Hours):			320

Green Line Training (P2000 LRVs):

RFS SIEMENS 2000 PROPULSION	64	1	64
Total Green Line Training (Hours):			64

Total RFS Instruction for the month of January 2012 (Hours): **384.0**

Other Instruction Activities

Vacations, Holidays, Sick Time	80
Red Line Technical Support	160
Gold Line Technical Support	160

Total Other Instruction Activities **400.0**

Core Vehicle Training Completed: **BLUE RED GREEN GOLD**

Percentage of core vehicle training complete: **87.4% 99.5% 92.1% 90.3%**

Siemens P2000 training complete: **36.8% N/A N/A N/A**

Average Specialist Rail Experience Level in Years: **11.8 10.5 9.0 10.0**

Core Training Completed

