



Rail Fleet Services Monthly Report July 2012

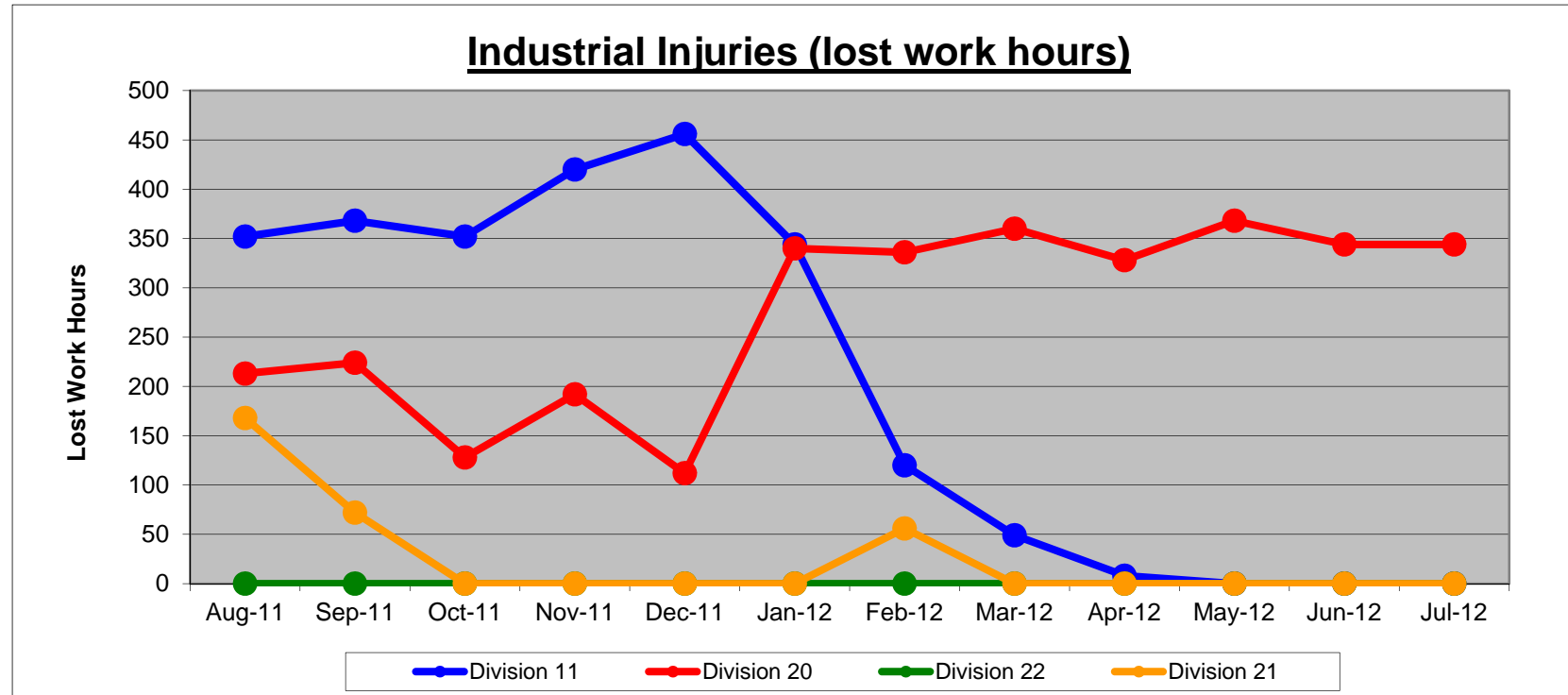


Metro

Table of Contents

•	Safety	
	- Industrial Injuries	Page 3
	- Rail Vehicle Accidents & Major Incidents	Page 4
•	Customer Service	
	- Service Delivery – AM/PM Pull-Outs	Page 5
	- Vehicle Utilization – Blue Line & Green Line	Page 6
	- Vehicle Utilization – Red Line & Gold Line	Page 7
	- Mean Miles Between Failures (Major)	Page 8
	- Repeat Failures	Page 9
•	Business Processes	
	- Major Incidents	Page 10
	- Preventive Maintenance Compliance	Page 11
•	Finance	
	- Vandalism & Graffiti Costs	Page 12
	- Graffiti Pictures	Page 13
	- Material & Labor Costs	Page 14
	- Cost per mile	Page 15
	- Absence vs. Overtime	Page 16
•	Engineering	
	- Rail Vehicle Engineering Project Summary	Page 17
	- P2550 Vehicle Acceptance Program	Page 18
•	Quality Assurance	
	- Warranty Program Projects Summary	Page 19
•	Growth	
	- RFS Instruction Department Activities	Page 20

Industrial Injuries – Lost Work Hours July 2012



	Aug-11	Sep-11	Oct-11	Nov-11	Dec-11	Jan-12	Feb-12	Mar-12	Apr-12	May-12	Jun-12	Jul-12	Year to Date
Division 11	352	368	352	420	456	344	120	49	8	0	0	0	2,469
Division 20	213	224	128	192	112	340	336	360	328	368	344	344	3,289
Division 22	0	0	0	0	0	0	0	0	0	0	0	0	0
Division 21	168	72	0	0	0	0	56	0	0	0	0	0	296
Totals	733	664	480	612	568	684	512	409	336	368	344	344	6,054

Rail Vehicle Accidents & Major Incidents

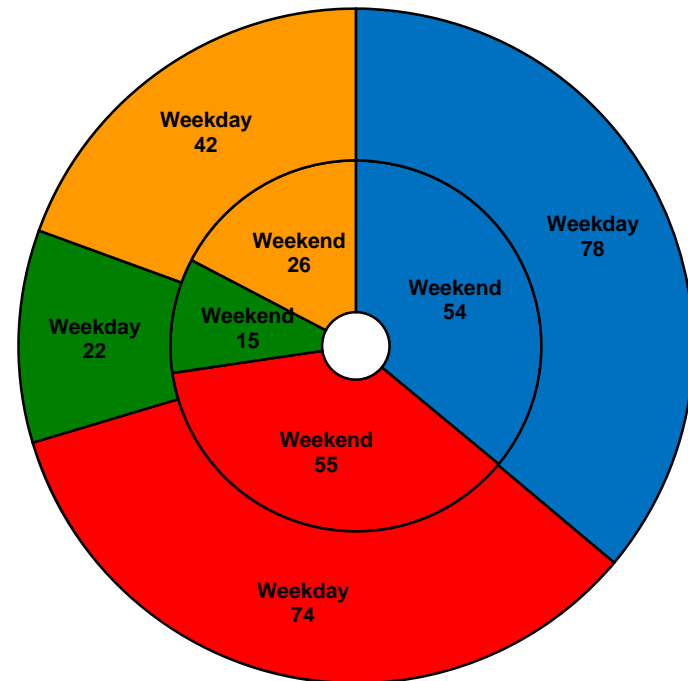
July 2012

Repair Costs	Aug-11	Sep-11	Oct-11	Nov-11	Dec-11	Jan-12	Feb-12	Mar-12	Apr-12	May-12	Jun-12	Jul-12	Totals
Blue/Expo Line	\$395	\$7,337	\$888	\$16,188	\$1,199	\$4,704	\$5,087	\$18,570	\$2,675	\$1,718	\$1,186	\$674	\$60,621
Red/Purple Line	\$0	\$0	\$0	\$0	\$0	\$0	\$0	\$0	\$1,115	\$571	\$0	\$0	\$1,686
Green Line	\$0	\$0	\$0	\$0	\$0	\$0	\$0	\$0	\$989	\$0	\$0	\$120	\$1,109
Gold Line	\$2,567	\$0	\$320	\$0	\$0	\$0	\$0	\$4,134	\$0	\$0	\$752	\$0	\$7,773
Totals	\$2,962	\$7,337	\$1,208	\$16,188	\$1,199	\$4,704	\$5,087	\$22,704	\$4,779	\$2,289	\$1,938	\$794	\$71,189

Rail Vehicle Accident Costs - July 2012				
Metro Blue Main Line				
Date	Incident #	Problem code	Incident Description	Cost
7/13/2012	2204318	Train vs. Pedestrian	A 10-72 was reported at El Segundo grade crossing going northbound on track 1.	\$422.00
7/21/2012	2207518	Train vs. Object	A 10-71 was reported when Train 7 hit a shopping cart at Nadeau grade crossing going southbound.	\$252.00
				674.00
Metro Green Line				
7/30/2012	2210958	Train vs. Pedestrian	A 10-72 was reported heading westbound at Vermont Station on track 1.	\$120.00
				\$120.00
Metro Red Line				
7/9/2012	2202494	Train vs. Object	A 10-71 was reported by a female patron claiming door closure resulting in an injury to her wrist and hip on Train 32 going westbound at Union Station.	\$0.00
				\$0.00
GRAND TOTAL				\$794.00
(10-71) = Train vs. Object, (10-72) = Train vs. Pedestrian, (10-73) = Train vs. Vehicle (10-74) = Train vs. MTA Vehicle, (10-75) = Derailment				

Service Delivery July 2012

Blue/Expo Line Fleet Size: 92			
	<u>Vehicles</u>	<u>Average</u>	<u>% Up</u>
<u>Pull Out</u>	<u>Required</u>	<u>Available</u>	<u>(Down)</u>
Weekday:	78	80	103%
Weekend:	54	64	119%
Late Pullouts: 0 *			
Monthly Mileage: 623,733			
Red/Purple Line Fleet Size: 104			
	<u>Vehicles</u>	<u>Average</u>	<u>% Up</u>
<u>Pull Out</u>	<u>Required</u>	<u>Available</u>	<u>(Down)</u>
Weekday:	74	80	107%
Weekend:	55	74	135%
Late Pullouts: 0 *			
Monthly Mileage: 588,268			
Green Line Fleet Size: 29			
	<u>Vehicles</u>	<u>Average</u>	<u>% Up</u>
<u>Pull Out</u>	<u>Required</u>	<u>Available</u>	<u>(Down)</u>
Weekday:	22	23	106%
Weekend:	15	21	139%
Late Pullouts: 1 *			
Monthly Mileage: 233,927			
Gold Line Fleet Size: 48			
	<u>Vehicles</u>	<u>Average</u>	<u>% Up</u>
<u>Pull Out</u>	<u>Required</u>	<u>Available</u>	<u>(Down)</u>
Weekday:	42	43	102%
Weekend:	26	42	160%
Late Pullouts: 0 *			
Monthly Mileage: 276,411			

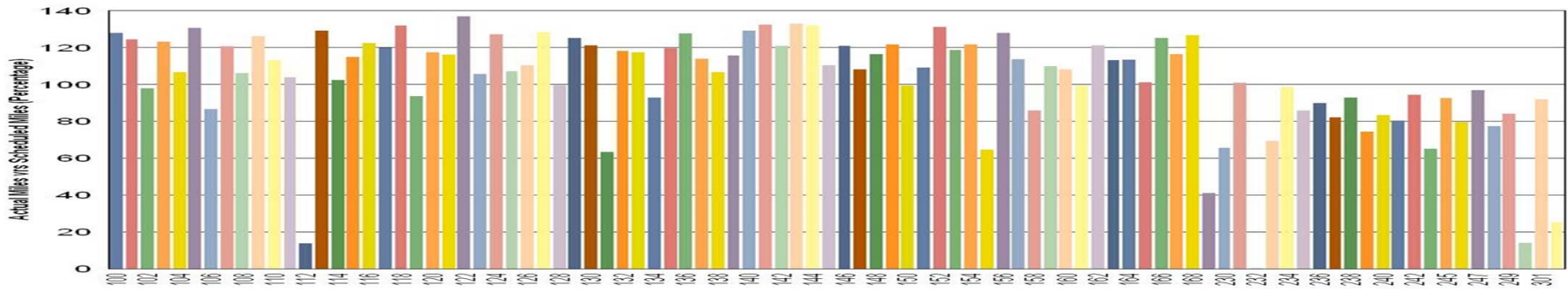


Metro

* Due to a vehicle related problem

Vehicle Utilization July 2012

Metro Blue/Expo Line Fleet



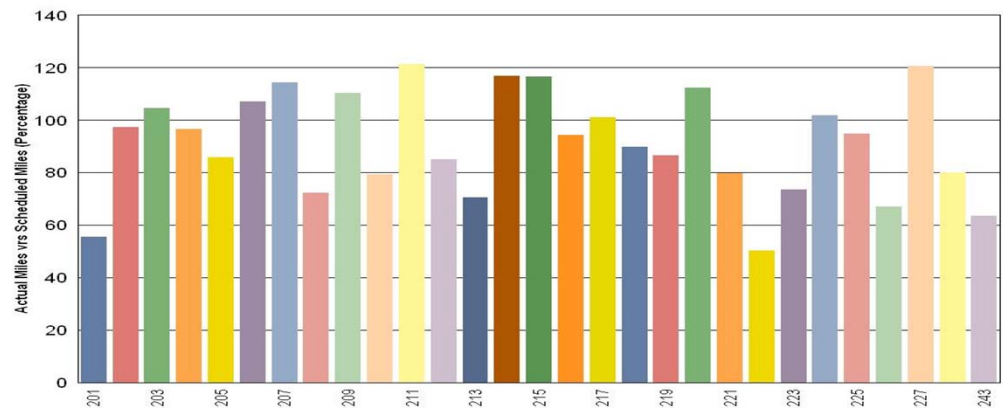
Blue/Expo Lines:

- 112 Vehicle 112 required numerous inspections which involved 3 to 4 days to complete the inspection. After inspection, numerous repairs were made and new ground return units needed to be replaced.
- 232 Vehicle assigned for training exercises. The baseline inspection requires a few days to complete and many attempts have been made to trouble shoot brake problem which kept the car out of service.
- 250 Many attempts have been made including changing components and mainline testing which kept the car out of service.
- 302

Green Line:

The fleet has met the daily maximum utilization requirements for the month of July.

Metro Green Line



Vehicle Utilization July 2012

Red/Purple Lines:

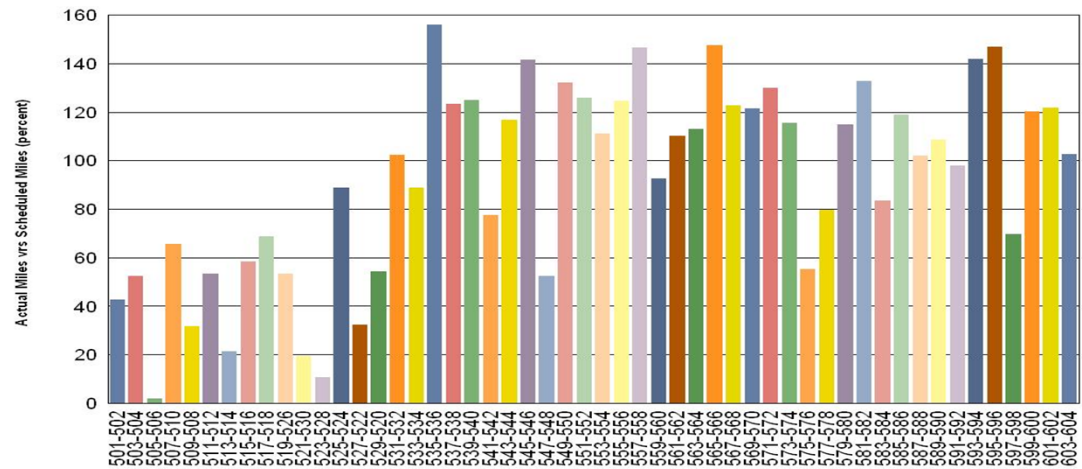
Explanation for under-used vehicles:

- 505-506** Vehicle used as a friction brake overhaul car. Vehicle will be put back to revenue service by mid-August.
- 509-508** Vehicle used for engineering testing with consultant for 2 weeks.
- 513-514** Vehicle was held out of service due to compressor material delivery (15 days).
- 521-530** Vehicle held out of service for 6 days due to 90K preventative maintenance, propulsion failure, mainline test, and friction brake overhaul.
- 523-528** Vehicle held out of service for 2 weeks due to propulsion failure resulting in two TM shorted.
- 527-522** Vehicle held out of service for 6 days due to propulsion failures. Consultant is working on plans to mitigate these codes.

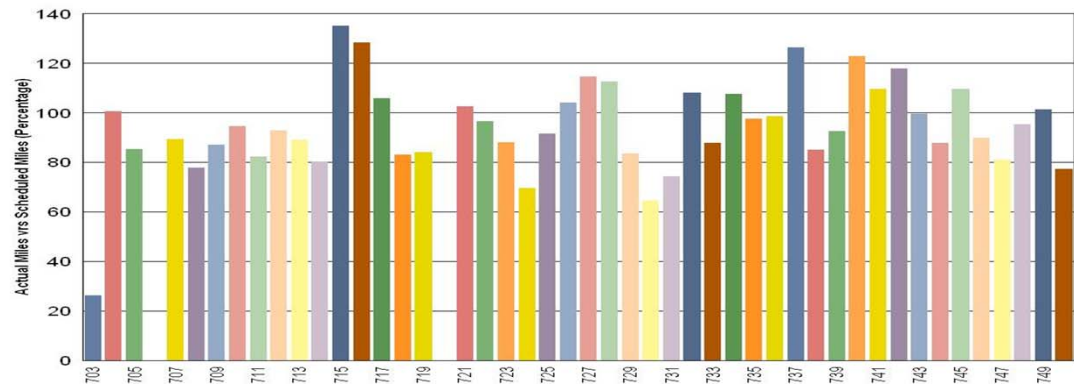
Gold Line:

- 703** Vehicle needed an ATP multifunction board (provided by contractor). After numerous vendor attempts, resolved a water leakage from HVAC system into passenger area. Returned to service in late July.
- 706** Vehicle originally out of service due to defective laminar seals on truck axles. Staff is currently troubleshooting other problems and anticipate vehicle returning to service in early August.
- 720** Vehicle had a second occurrence of burned wires in the 208VDC HVAC circuit connector plug. Repairs are in progress and Maintenance is coordinating with RFS Engineering to determine the root cause.

Metro Red/Purple Lines

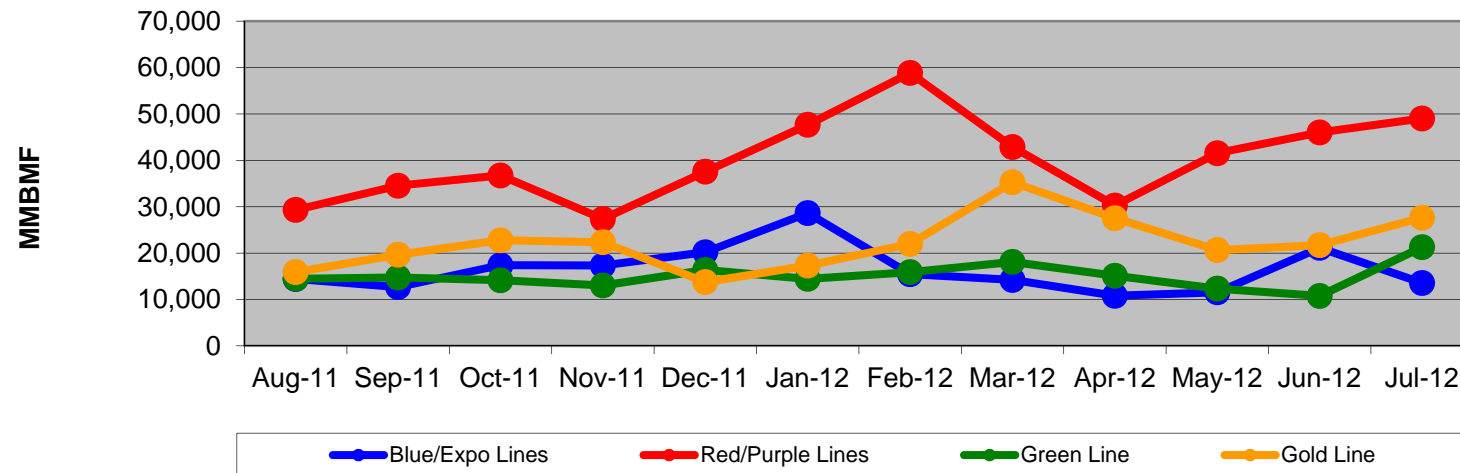


Metro Gold Line



Mean Miles Between Failures (Major) Year to Date

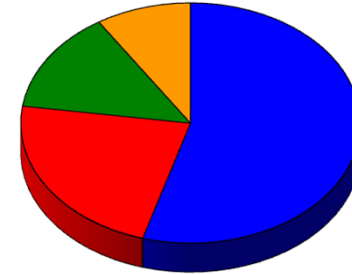
Mean Miles Between Major Failures (12 months)



	Aug-11	Sep-11	Oct-11	Nov-11	Dec-11	Jan-12	Feb-12	Mar-12	Apr-12	May-12	Jun-12	Jul-12
Blue/Expo Lines	14,425	12,679	17,397	17,322	20,187	28,614	15,454	14,216	10,803	11,546	21,129	13,559
Red/Purple Lines	29,298	34,535	36,745	27,358	37,551	47,660	58,828	42,883	30,255	41,539	46,006	49,022
Green Line	14,482	14,740	14,148	13,029	16,379	14,448	15,895	18,092	15,108	12,342	10,775	21,266
Gold Line	15,906	19,647	22,773	22,340	13,743	17,298	21,981	35,279	27,526	20,649	21,726	27,641

Repeat Failures July 2012

Metro Blue Line: 12 Repeat Failures
Expo Line: 0 Repeat Failures
Metro Red Line: 5 Repeat Failures
Metro Green Line: 3 Repeat Failures
Metro Gold Line: 2 Repeat Failures



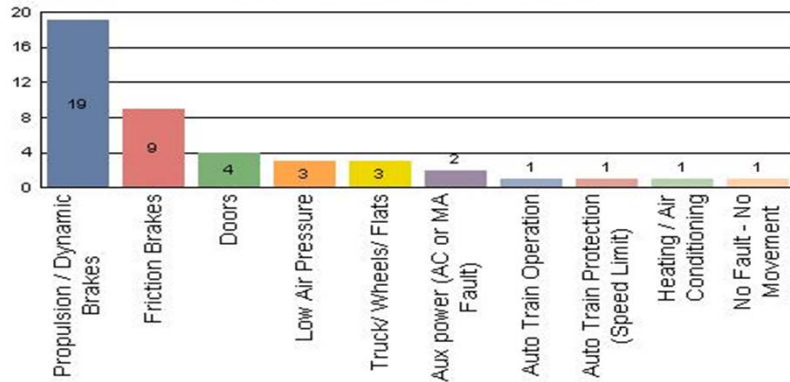
■ Blue Line ■ Expo Line ■ Red Line
■ Green Line ■ Gold Line

System	Blue Line		Expo Line		Red Line		Green Line		Gold Line	
	Car #	Repeats	Car #	Repeats	Car #	Repeats	Car #	Repeats	Car #	Repeats
Announcements	235	1								
ATP					541	2				
Doors					515	1				
					592	1				
Friction Brakes	233	1								
	247	1								
HVAC	240	1					208	2	731	2
Other Vehicle System	135	1								
Propulsion/Dynamic Brake	160	1			519	1	220	1		
Radio	139	2								
TWC	144	1								
	160	3								
TOTALS	12		0		5		3		2	

Major Incidents July 2012

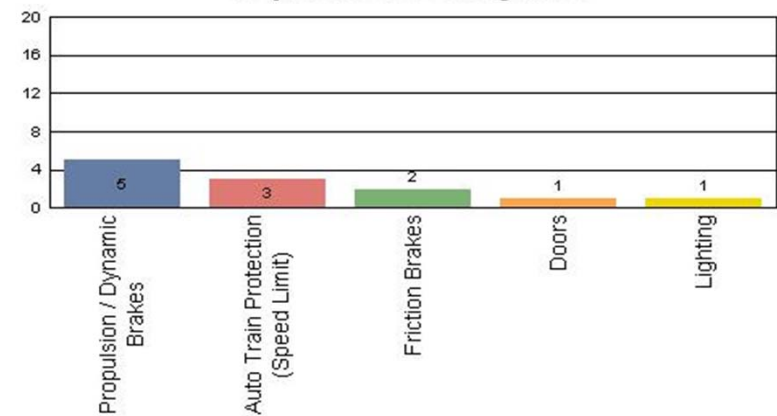
Metro Blue/Expo Line

Top Incident Categories



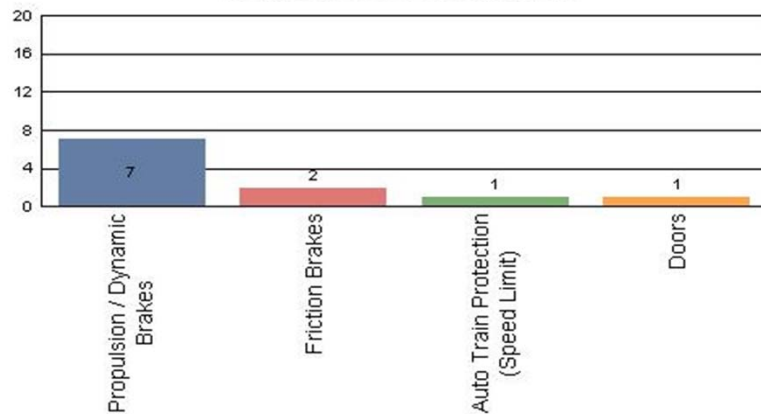
Metro Red/Purple Line

Top Incident Categories



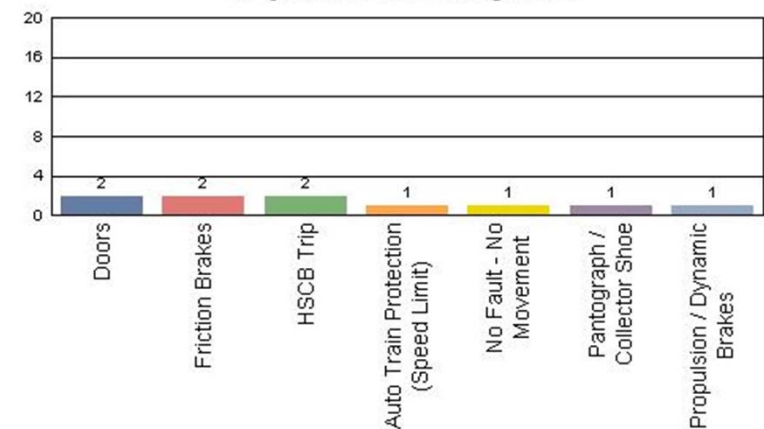
Metro Green Line

Top Incident Categories



Metro Gold Line

Top Incident Categories

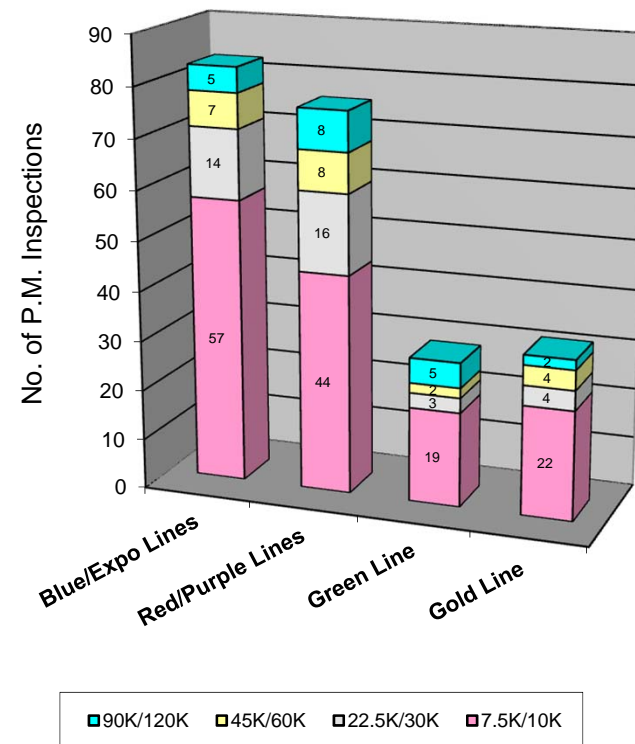


Preventive Maintenance Compliance July 2012

PM Compliance	Aug-11	Sep-11	Oct-11	Nov-11	Dec-11	Jan-12	Feb-12	Mar-12	Apr-12	May-12	Jun-12	Jul-12
Blue/Expo Lines	100%	100%	100%	100%	100%	100%	100%	100%	100%	100%	100%	100%
Red/Purple Lines	100%	100%	100%	100%	100%	100%	100%	100%	100%	100%	100%	100%
Green Line	100%	100%	100%	100%	96%	100%	100%	100%	100%	100%	96%	100%
Gold Line	100%	100%	100%	100%	100%	100%	100%	100%	100%	100%	100%	100%

July 2012 Preventive Maintenance Inspections

No. of P.M. Inspections	7.5K/10K	22.5K/30K	45K/60K	90K/120K	Totals
Blue/Expo Lines	57	14	7	5	83
Red/Purple Lines	44	16	8	8	76
Green Line	19	3	2	5	29
Gold Line	22	4	4	2	32
Totals:	142	37	21	20	220

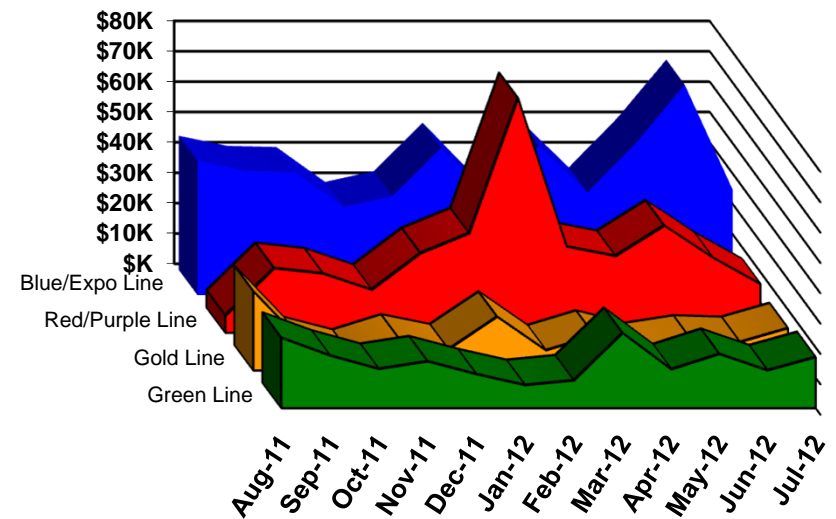


Vandalism & Graffiti Report

July 2012

	Aug-11	Sep-11	Oct-11	Nov-11	Dec-11	Jan-12	Feb-12	Mar-12	Apr-12	May-12	Jun-12	Jul-12	Year-to-Date
Blue/Expo Line	\$44K	\$41K	\$41K	\$29K	\$33K	\$49K	\$32K	\$49K	\$34K	\$50K	\$69K	\$35K	\$506K
Red/Purple Line	\$6K	\$21K	\$20K	\$14K	\$26K	\$33K	\$77K	\$28K	\$25K	\$35K	\$25K	\$16K	\$328K
Green Line	\$23K	\$17K	\$13K	\$15K	\$11K	\$8K	\$9K	\$25K	\$13K	\$18K	\$12K	\$17K	\$181K
Gold Line	\$26K	\$9K	\$5K	\$10K	\$7K	\$18K	\$7K	\$11K	\$7K	\$10K	\$9K	\$14K	\$134K
Totals:	\$99K	\$89K	\$78K	\$69K	\$77K	\$107K	\$125K	\$114K	\$79K	\$113K	\$116K	\$82K	\$1,149K

July 2012 Vandalism & Graffiti - All Rail				
	Qty	Labor	Materials	Totals
Windows replaced	77	\$14,112	\$18,710	\$32,822
Vandal Shields	313	\$8,883	\$5,000	\$13,883
Seats Cleaned	801	\$2,113	\$0	\$2,113
Seats Replaced	200	\$4,621	\$6,205	\$10,826
Graffiti removal - other	702	\$11,698	\$450	\$12,148
Repainting panels	1,115	\$8,504	\$1,260	\$9,764
Totals	3,208	\$49,931	\$31,625	\$81,556



Graffiti Pictures July 2012

Blue Line



Green Line



Gold Line

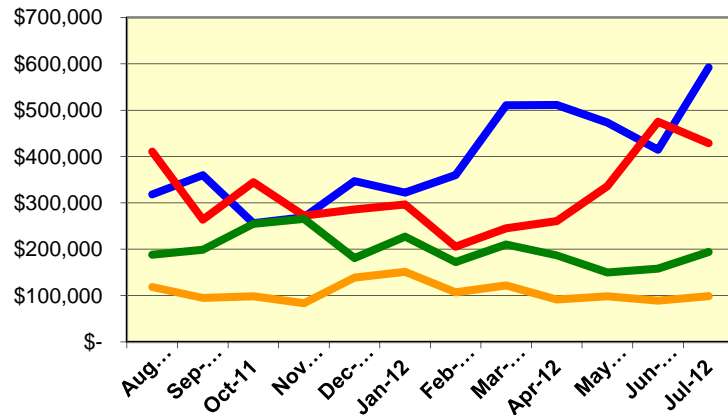


Material and Labor Costs

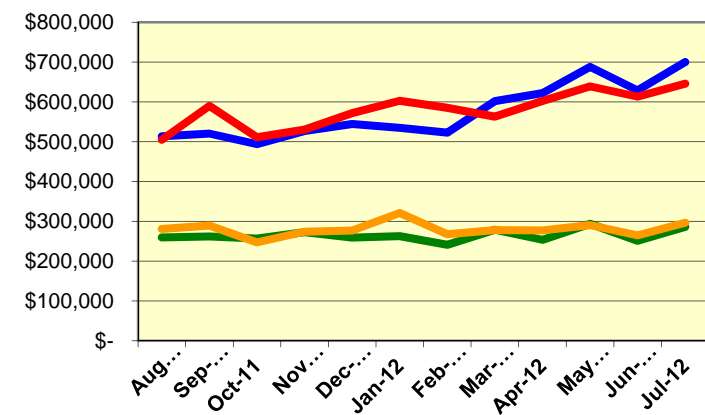
July 2012

MATERIALS	Aug-11	Sep-11	Oct-11	Nov-11	Dec-11	Jan-12	Feb-12	Mar-12	Apr-12	May-12	Jun-12	Jul-12
Blue/Expo Lines	\$ 318,296	\$ 359,508	\$ 256,152	\$ 268,760	\$ 346,891	\$ 322,169	\$ 359,911	\$ 510,512	\$ 511,185	\$ 473,281	\$ 414,601	\$ 591,928
Red/Purple Lines	\$ 410,299	\$ 263,808	\$ 344,563	\$ 272,291	\$ 285,916	\$ 296,353	\$ 205,225	\$ 244,902	\$ 260,532	\$ 335,824	\$ 474,908	\$ 428,864
Green Line	\$ 187,997	\$ 198,811	\$ 254,691	\$ 265,489	\$ 180,929	\$ 227,110	\$ 172,152	\$ 210,220	\$ 186,572	\$ 149,660	\$ 157,920	\$ 194,003
Gold Line	\$ 118,401	\$ 94,967	\$ 98,380	\$ 83,425	\$ 138,599	\$ 150,971	\$ 106,736	\$ 121,821	\$ 91,218	\$ 98,407	\$ 88,885	\$ 98,449
Totals	\$ 1,034,993	\$ 917,095	\$ 953,786	\$ 889,965	\$ 952,335	\$ 996,603	\$ 844,024	\$ 1,087,455	\$ 1,049,507	\$ 1,057,172	\$ 1,136,314	\$ 1,313,244

Material Costs



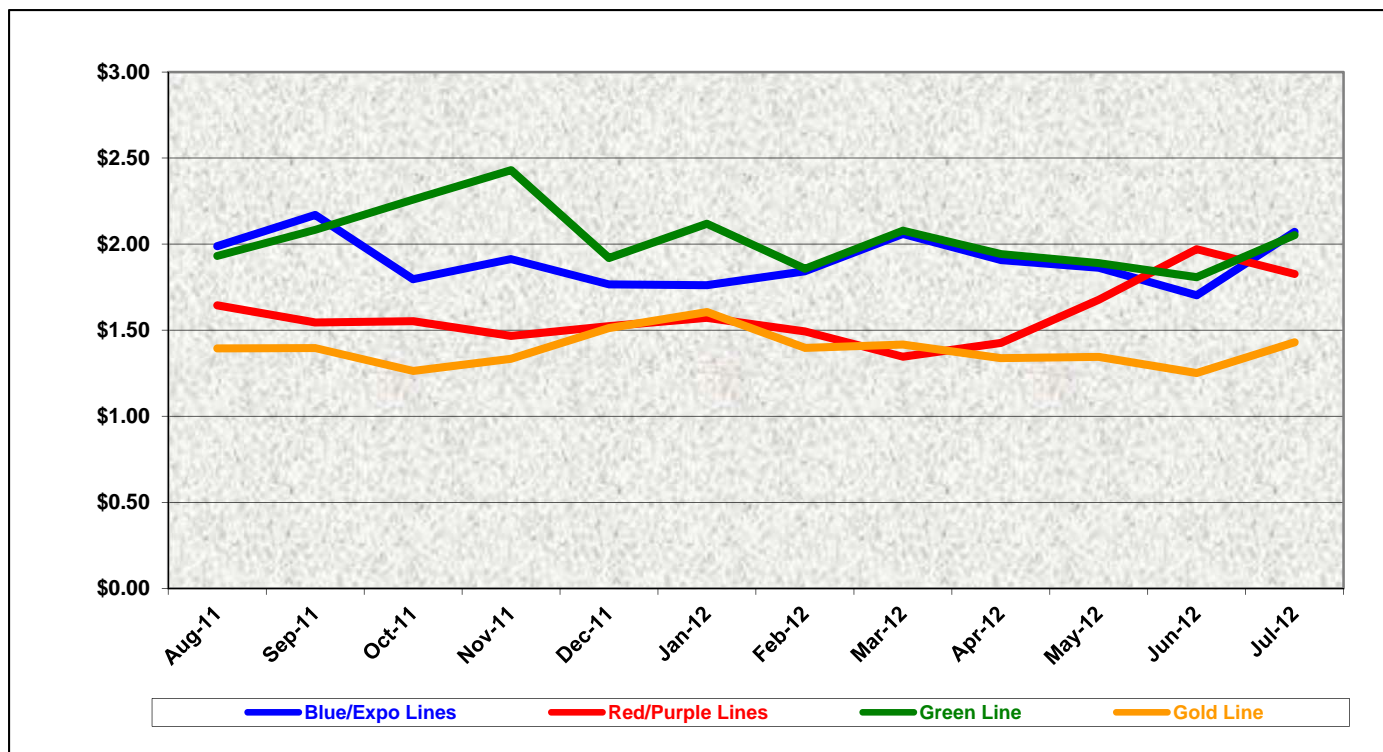
Labor Costs



LABOR	Aug-11	Sep-11	Oct-11	Nov-11	Dec-11	Jan-12	Feb-12	Mar-12	Apr-12	May-12	Jun-12	Jul-12
Blue/Expo Lines	\$ 513,406	\$ 520,526	\$ 493,739	\$ 526,600	\$ 544,564	\$ 534,797	\$ 522,603	\$ 601,905	\$ 622,113	\$ 687,897	\$ 628,928	\$ 699,849
Red/Purple Lines	\$ 504,785	\$ 589,986	\$ 510,944	\$ 530,408	\$ 571,885	\$ 602,770	\$ 584,940	\$ 562,875	\$ 602,434	\$ 639,102	\$ 613,032	\$ 645,748
Green Line	\$ 259,629	\$ 261,796	\$ 256,610	\$ 272,603	\$ 259,198	\$ 262,563	\$ 241,042	\$ 278,653	\$ 253,643	\$ 293,492	\$ 251,094	\$ 286,110
Gold Line	\$ 280,715	\$ 289,048	\$ 246,890	\$ 274,017	\$ 276,926	\$ 321,152	\$ 267,372	\$ 277,944	\$ 276,975	\$ 290,375	\$ 264,536	\$ 296,565
Totals	\$ 1,558,535	\$ 1,661,357	\$ 1,508,183	\$ 1,603,628	\$ 1,652,573	\$ 1,721,282	\$ 1,615,957	\$ 1,721,377	\$ 1,755,165	\$ 1,910,866	\$ 1,757,590	\$ 1,928,272

Cost Per Mile July 2012

Cost per mile:	Aug-11	Sep-11	Oct-11	Nov-11	Dec-11	Jan-12	Feb-12	Mar-12	Apr-12	May-12	Jun-12	Jul-12	Average
Blue/Expo Lines	\$1.99	\$2.17	\$1.80	\$1.91	\$1.77	\$1.76	\$1.84	\$2.06	\$1.91	\$1.86	\$1.70	\$2.07	\$1.90
Red/Purple Lines	\$1.64	\$1.55	\$1.55	\$1.47	\$1.52	\$1.57	\$1.49	\$1.35	\$1.43	\$1.68	\$1.97	\$1.83	\$1.59
Green Line	\$1.93	\$2.08	\$2.26	\$2.43	\$1.92	\$2.12	\$1.86	\$2.08	\$1.94	\$1.89	\$1.81	\$2.05	\$2.03
Gold Line	\$1.39	\$1.40	\$1.26	\$1.33	\$1.51	\$1.61	\$1.40	\$1.42	\$1.34	\$1.34	\$1.25	\$1.43	\$1.39



Absences vs. Overtime

July 2012

ABSENCE TYPE and HOURS	3940 Admin.	3941 Blue	3942 Red	3943 Green	3944 Gold	3947 Expo	Total
AWP-ABSENT W/O PERMISSION	0.00	8.00	8.00	8.00	0.00	0.00	24.00
BER-BEAVEMENT	24.00	0.00	32.00	0.00	64.00	0.00	120.00
CTO-COMPENSATORY TIME OFF	0.00	107.50	180.25	36.00	140.00	24.00	487.75
CUT-EMPLOYEE LEAVES EARLY	1.91	0.45	0.05	0.00	1.00	0.00	3.41
CVA - CASUAL VACATION	0.00	116.00	672.00	0.00	344.00	0.00	1,132.00
DSL-DISABILITY LEAVE/LONG	0.00	384.00	0.00	48.00	134.40	0.00	566.40
EFH-EMG. FLOAT HOL.	0.00	24.00	136.00	80.00	56.00	0.00	296.00
ETO-EXCUSED TIME OFF	16.90	38.67	36.22	3.00	26.40	2.00	123.19
FMI-FAM IND INJURY	0.00	0.00	0.00	112.00	0.00	0.00	112.00
FML-FAMILY CARE LEAVE	0.00	352.50	732.00	218.75	208.00	0.00	1,511.25
FMS-FAMILY LEAVE SICK	0.00	32.00	190.20	0.00	105.60	0.00	327.80
HLF-HOLIDAY FLOATING	0.00	802.00	520.00	304.00	272.00	8.00	1,906.00
HNP-HOLIDAY NOT PAID	112.00	0.00	0.00	24.00	16.00	0.00	152.00
HOL-HOLIDAY LEGAL	0.00	512.50	488.00	136.00	112.00	40.00	1,288.50
II-INDUSTRIAL INJURY	56.00	0.00	344.00	0.00	0.00	0.00	400.00
JUR-JURY DUTY	0.00	32.00	8.00	16.00	0.00	0.00	56.00
LC1-LABOR CODE 233	40.00	136.00	75.67	16.00	48.00	0.00	315.67
MLN-MILITARY ABSENCE-UNPAID	0.00	0.00	0.00	16.00	0.00	0.00	16.00
RTO-REQUESTED TIME OFF-NO PA	0.00	42.43	4.00	0.00	8.00	0.00	54.43
SCK-SICK PAY	0.00	92.00	171.82	64.00	8.00	0.00	335.82
SCW-SICK WITHOUT PAY	16.00	288.00	0.00	224.00	48.00	0.00	576.00
TAR-TARDY	0.00	2.87	0.77	2.42	0.13	0.00	6.19
VAC-VACATION	0.00	1,804.98	1,036.50	595.53	535.85	0.00	3,972.86
VAC-VACATION WHILE SICK	124.00	0.00	40.00	0.00	0.00	0.00	164.00
Total Absence Hours	391	4,776	4,675	1,904	2,127	74	13,947
Number of Work Force (assigned)	33	124	114	48	52	7	378
Full Work Force hours/month	5,719	21,489	19,756	8,318	9,012	1,213	65,507
Absence as a % of Work Force	7%	22%	24%	23%	24%	6%	21%
OVERTIME TYPE and HOURS	3940	3941	3942	3943	3944	3947	Total
CTB-COMPENSATORY TIME TO BANK	0	476	445	218	277	111	1527
OTP-PREM OVERTIME	702	4046	3334	1452	1187	33	10753
WLO-Worked Lunch Overtime	12	127	162	72	79	5	455
Total	714	4649	3940	1741	1543	149	12736
Overtime as a % of Work Force	12%	22%	20%	21%	17%	12%	19%
UNCOVERED ABSENCES	3940	3941	3942	3943	3944	3947	Total
Absences FTE	2	28	27	11	12	0	80
OTP FTE	4	27	23	10	9	1	73
FTE Difference	-2	1	4	1	3	-1	7

Rail Vehicle Engineering Project Summary

July 2012

Preparation of Engineering Technical Specifications	Tracking #	Status
Red Line AC Gear Box (Rev. 0)	A650/TS/026	Draft in process
Powered Axle Overhaul SOW	P2000 SOW	NTP was issued to PAMCO on 08/08/2012
Vital Relay Calibration	P865-P2020/TS/061	In Revising Process
Windows glass and rubber glazing specification	P865-P2020/TS-066	Released to Procurement - Bid is due on 08/22/12
Friction Brake Kit Less Air Compressor Overhaul	P2000/TS/035 Rev 0	Released to Procurement for bid - SS was signed - Going to DBE on 08/17/12
Center Truck Friction Brake Disc	P2000-TS-020 rev. 01	Awarded to Wabtec
A650 Battery Specification	A650/TS/39	Released to Procurement for bid
Powered Axle Overhaul SOW	P865-P2020/TS/xx	Received draft from CH2M and in editing process
Seat Insert	P865-P2020/TS/62	Released to Procurement- Bid is due on 08/23/12
Red Line DC Gear Box (Rev. 0)	P650/TS/040	Released to Procurement for bid
Vandal Shield for all lines	A650-P865-P2000-P2550/TS/012	Released to Procurement- Bid was opened on 07/31/12 - Waiting for Mini Board approval
Aux power supply equipment (APSE) - Static Inverter	P865-P2020/TS/xx	CH2M draft received - Industry review completed - In editing process
Tire kit specification	P865-P2020/TS/064	Released for signatures
Red Line (Base Buy) DC Traction Motor	P650/TS/041	Released to Procurement - Bid is due 09/14/12
MBL HVAC Compressor	P865/P2020/TS/xx	Received draft from CH2M and in editing process
Head Sing LED	P2000/TS/xx	Draft in process
Chevron springs	P865/P2020/TS/xx	CH2M in editing process with Metro's comments
General - All Lines		Status
Roadway Worker Protection		CPUC/Installing ProTran1 Device-P865/P2020/P2000/P2550 completed, A650 in process
Fleet Faliue Analysis		CH2M Hill
New Radios installed to replace old radios		Meeting 3/7/2012-Contract awarded, MBL and P2000 prototypes are in installtion process.
Bike Space		P2000/P2550/A650 Fleet modification completed.
P2000 Overhaul Program		Status
Master Controller - Bombardier Refurbish		Ongoing Program
RSS and EOSS Bundle Cables/Connectors - Glenair		In Progress
Handicap Seat Modification using Velcro		In Progress
CCH possible replacement (Focon)		Send information to Focon
TWC Calibration procedure.		Base Line data confirmed and existing TWC test equipment mapped for performance.
P865/P2020 Program		Status
Static Inverter - Transtechnik		Inverter running in revenue service for testing - No issues
Remotely reset CB1 Breaker		Prototype was successfully tested. Fleet modification completed.
"G" force measurement on Transponder installed on P865/P2020		H&K installed "G" sensor on transponder and collected data for analysis - 03/08/12. New carbody mounted bracket were tested and in fabrication for fleet modification.
Under seat - No motion relays		ABB Prototype installed on 07/24/12 for one month test period.
Replace air compressor DC motor with AC motor		Knorr prototype on order - Due in October 2012
P2000 Gold to Green		Status
Signal package conversion (Gold to green)		On-hold
TWC Investigation / Calibration (Systra)		Active - In process
A650 Overhaul Program		Status
Midlife Overhaul Specification		Draft complete by Metro. In process of Consultant selection to complete.
HPT Upgrade		Wabtec Proposal received - Production run prototype by 08/15/12. NTP issued 08/08/12
AB New Traction Motor Mount		AB for Fleet Modification in progress. A total of sventy seven (77) trucks were completed.
Friction Brake Kit Overhaul		Overhaul program in place - Wabtec (30 Base cars were added and approved)
Ribbed Rubber Flooring PRF		Dealing with OEM - Procurement getting more quotes.
Door Operator Gearbox and Rollers Overhaul		In Progress
H-4 electronic units		Unit upgrade - Fleet issues (Wabtec) to provide new unit proposal.
P2550		Status
Vehicle Acceptance		Forty eight cars have been Final Accepted. Cars 701 and 702 are in commisioning test.
Gearbox Seepage/Leakage investigation		Greg Garza will add O-ring part number on M3 - Completed
3P Flip Up Seat Finger Guard		Submitted SS to Procurement - Testori
Find alternative Vendor for Reverse Engineer PCB Boards P2550		In Progress
Compressor Dessicant Material		In Progress
Rubber Boots (High Voltage)		In Progress - Vulcanite. Buying OEM through A&E Telecom.
Cyclope light and Destination Sign Glass		In Progress - NASG
Ground Brush Schunk (Lamellar Seal failure investigation)		In Progress
Expo		Status
Readiness		Metro-RFS Engineering is supporting qualification and test activities of vehicles and wayside.
ATP Certification		Mainline Testing Completed; waiting for final letter
P2000 Couple/un-couple issues		Investigation completed - Test was scuccesful - Fleet modification in process.
Junction of Blue line and Expo line Testing		Safe Braking test completed at Culver City Station and report of successful test completed.
Junction of Blue line and Expo line Testing		Recent testing (07/26/12) indicated signal track problem at Culver City. Wayside are recertify track circuits. Further testing will be undertaken when complete.
ATP Cab Signal Mapping at the Junction and Expo Line Phase I		
Close out-Normal Run		Completed Normal Run , need to finish Reverse run for the entire Expo line and the Junction.



P2550 Vehicle Acceptance Program

July 2012

Vehicle Status Update:

- Metro has received 50 cars with 48 being final accepted, one car being conditionally accepted and the remaining car (702) continuing through commissioning.
- The target is to have car 702 conditionally accepted by end of August 2012.

Engineering Activities Update:

- Event recorder: Configuration continues to be finalized. Software is on site for final qualification.
- ATP/TWC Configuration: Final software is targeted to be on site beginning the first week of August 2012 for final qualification and implementation.

Project Management:

- Contract spares continue to be delivered to Metro and estimated to be 90% complete. All parts needed for day-to-day maintenance have been received. Critical parts needed for heavy repairs are beginning to arrive.
- Daily and bi-weekly meetings are scheduled with contractor management to address project issues.

QA-Warranty Program Projects Summary

July 2012

QA-WARRANTY ACTIVITIES:

- Completed 1000 Mile Burn-In Acceptance Testing (Vehicle 701).
- Completed Vehicle 702 PAAT 2 & 3 & 4 performances checks successfully.
- On-Going, P2550 Car Mod Campaign / Testing Oversight, Component Reliability Trend Tracking.
- On-Going, P2550 parts tracking: Contract Spares, Capital Spares, Warranty Spares & Metro Loaned Parts.
- On-Going, P2550 Warranty Claims Processing.
- On-Going A650 Base Buy & Option Car Fleet Warranty – Truck Frame Modification Campaign (51 out of 232 trucks modified to date). MRL Cost Avoidance savings accrued to date: \$351,856.00.
- On-Going, Management's Special Interest 7.5K Supplemental Inspections & Articulation / Cab Wiring Tightness Checks MBL & MGL P2000 Fleet Cars (14 completed).
- On-Going QA FAI's or equipment inspection/failure investigations.
- QA Oversight, MBL & MGL Fleets, (20 of 92 LRV's) Truck Inspections, Journal Bearing Housing Inspections, Damper Inspections, Wheel Back-to-Back Measurements, Wheel Flange Measurements, Wheel Residual Mount Inspections.
- On-Going QA PMI Audits, Spot Checks & Surprise/Unannounced Audits. (23 Audits conducted).
- Warranty-QA Interest Oversight & Tracking: Overhauls / Mod Programs, (A650/P2000/P2020/865) Propulsion System, Master Controllers, Capacitor Banks, Air Compressors, Aux Power, Couplers, Gearboxes, Articulation Diaphragms, Friction Brakes, HPT's, Brake Resistor Grids, T/M's, MA's, HVAC, Doors, A/C Motors – (Blowers & Evaporators).

RFS Instruction Department Activities

July 2012

Training classes completed during the month of July 2012

Description	Course Hours	Student Count	Training Hours
Blue & Expo Line Training - (P865/2020 & P2000 LRV):			
RFS SIEMENS MAINLINE DUTY, DEAD TOW AND VEHICLE RECOVERY (HA	32	12	384
RFS 2-WEEK RAIL INTRODUCTION	56	6	336

Total Blue Line Training (Hours): 720

Red Line Training (Breda A650 HRV):

EMS SOP: JAYNE PRODUCTS SCALE REMOVER (JP-SR)

1 6 6

Total Red Line Training (Hours): 6

Total RFS Instruction for the month of July 2012 (Hours): 726.0

Other Instruction Activities

P2550 EPC manual review

80

P2000 class preparations

80

Vacation and Bereavement

104

Red Line Engineering Support

80

Total Other Instruction Activities

344.0

Core Vehicle Training Completed: BLUE RED GREEN GOLD

Percentage of core vehicle training complete: 81.3% 98.0% 90.2% 90.2%

Siemens P2000 training complete: 39.6% N/A N/A N/A

Average Specialist Rail Experience Level in Years: 11.1 10.8 9.3 10.1

Core Training Completed

