



Rail Fleet Services Monthly Report September 2012

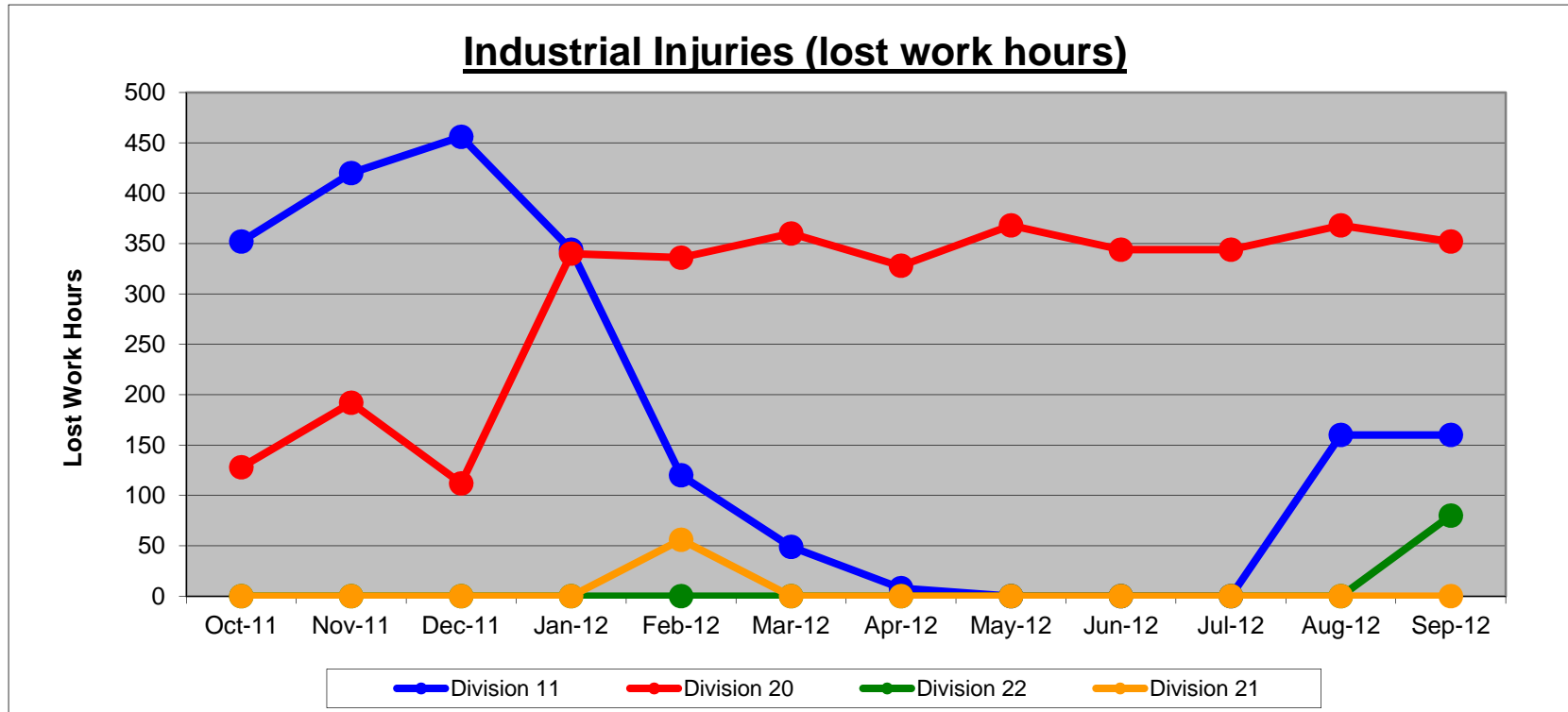


Metro

Table of Contents

•	Safety	
	- Industrial Injuries	Page 3
	- Rail Vehicle Accidents & Major Incidents	Page 4
•	Customer Service	
	- Service Delivery – AM/PM Pull-Outs	Page 5
	- Vehicle Utilization – Blue Line & Green Line	Page 6
	- Vehicle Utilization – Red Line & Gold Line	Page 7
	- Mean Miles Between Failures (Major)	Page 8
•	Business Processes	
	- Major Incidents	Page 9
	- Preventive Maintenance Compliance	Page 10
•	Finance	
	- Vandalism & Graffiti Costs	Page 11
	- Graffiti Pictures	Page 12
	- Material & Labor Costs	Page 13
	- Cost per mile	Page 14
	- Absence vs. Overtime	Page 15
•	Engineering	
	- Rail Vehicle Engineering Project Summary	Page 16
	- P2550 Vehicle Acceptance Program	Page 17
•	Quality Assurance	
	- Warranty Program Projects Summary	Page 18
•	Growth	
	- RFS Instruction Department Activities	Page 19

Industrial Injuries – Lost Work Hours September 2012



	Oct-11	Nov-11	Dec-11	Jan-12	Feb-12	Mar-12	Apr-12	May-12	Jun-12	Jul-12	Aug-12	Sep-12	Year to Date
Division 11	352	420	456	344	120	49	8	0	0	0	160	160	2,069
Division 20	128	192	112	340	336	360	328	368	344	344	368	352	3,572
Division 22	0	0	0	0	0	0	0	0	0	0	0	80	80
Division 21	0	0	0	0	56	0	0	0	0	0	0	0	56
Totals	480	612	568	684	512	409	336	368	344	344	528	592	5,777

Rail Vehicle Accidents & Major Incidents

September 2012

Repair Costs	Oct-11	Nov-11	Dec-11	Jan-12	Feb-12	Mar-12	Apr-12	May-12	Jun-12	Jul-12	Aug-12	Sep-12	Totals
Blue/Expo Line	\$888	\$16,188	\$1,199	\$4,704	\$5,087	\$18,570	\$2,675	\$1,718	\$1,186	\$674	\$8,226	\$4,726	\$65,841
Red/Purple Line	\$0	\$0	\$0	\$0	\$0	\$0	\$1,115	\$571	\$0	\$0	\$0	\$778	\$2,464
Green Line	\$0	\$0	\$0	\$0	\$0	\$0	\$989	\$0	\$0	\$120	\$0	\$0	\$1,109
Gold Line	\$320	\$0	\$0	\$0	\$0	\$4,134	\$0	\$0	\$752	\$0	\$1,583	\$0	\$6,789
Totals	\$1,208	\$16,188	\$1,199	\$4,704	\$5,087	\$22,704	\$4,779	\$2,289	\$1,938	\$794	\$9,809	\$5,504	\$76,203

Rail Vehicle Accident Costs - September 2012				
Metro Blue Main Line				
Date	Incident #	Problem code	Incident Description	Cost
9/13/2012	2229189	Train vs. Object	A 10-71 involving Train 1 was reported at 92nd grade crossing with train running over a street sign.	\$189.00
9/14/2012	2229405	Train vs. Vehicle	A 10-73 involving Train 17 was reported at intersection of Washington and Olive Street.	\$4,087.00
9/17/2012	2230519	Train vs. Pedestrian	A 10-72 was reported involving Train 15 heading southbound at Florence Station.	\$450.00
				4,726.00
Metro Red Line				
9/4/2012	2225231	Train vs. Pedestrian	A 10-72 was reported involving Train 55.	\$778.00
				778.00
Metro Gold Line				
9/11/2012	2227865	Train vs. Object	A 10-71 was reported with train making contact with sign mounted on cantenary pole just west of Ford Street, Track 1.	\$0.00
				\$0.00
				GRAND TOTAL \$5,504.00
(10-71) = Train vs. Object, (10-72) = Train vs. Pedestrian, (10-73) = Train vs. Vehicle (10-74) = Train vs. MTA Vehicle, (10-75) = Derailment				

Service Delivery September 2012

Blue/Expo Line Fleet Size: 92

	<u>Vehicles</u>	<u>Average</u>	<u>% Up</u>
<u>Pull Out</u>	<u>Required</u>	<u>Available</u>	<u>(Down)</u>
Weekday:	78	79	102%
Weekend:	54	66	123%
Late Pullouts: 3 *			
Monthly Mileage:	609,561		

Red/Purple Line Fleet Size: 104

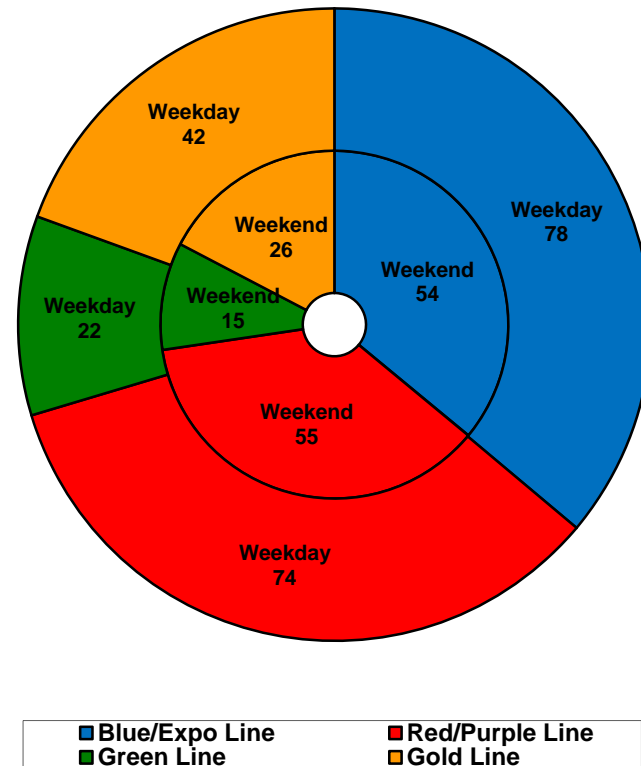
	<u>Vehicles</u>	<u>Average</u>	<u>% Up</u>
<u>Pull Out</u>	<u>Required</u>	<u>Available</u>	<u>(Down)</u>
Weekday:	74	79	107%
Weekend:	55	72	132%
Late Pullouts: 0 *			
Monthly Mileage:	639,382		

Green Line Fleet Size: 29

	<u>Vehicles</u>	<u>Average</u>	<u>% Up</u>
<u>Pull Out</u>	<u>Required</u>	<u>Available</u>	<u>(Down)</u>
Weekday:	22	23	106%
Weekend:	15	19	129%
Late Pullouts: 0 *			
Monthly Mileage:	223,697		

Gold Line Fleet Size: 50

	<u>Vehicles</u>	<u>Average</u>	<u>% Up</u>
<u>Pull Out</u>	<u>Required</u>	<u>Available</u>	<u>(Down)</u>
Weekday:	42	43	103%
Weekend:	26	41	158%
Late Pullouts: 0 *			
Monthly Mileage:	275,079		

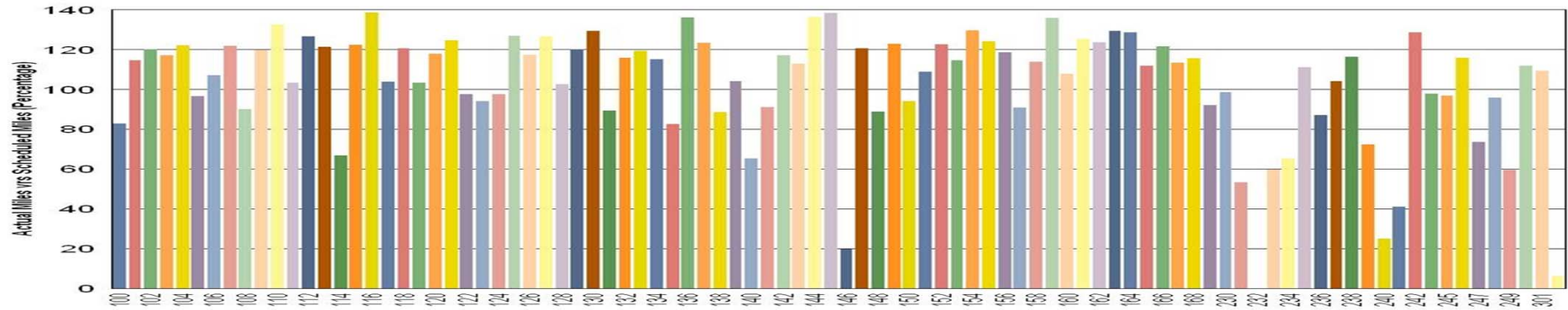


Metro

* Due to a vehicle -related problem

Vehicle Utilization September 2012

Metro Blue/Expo Line Fleet



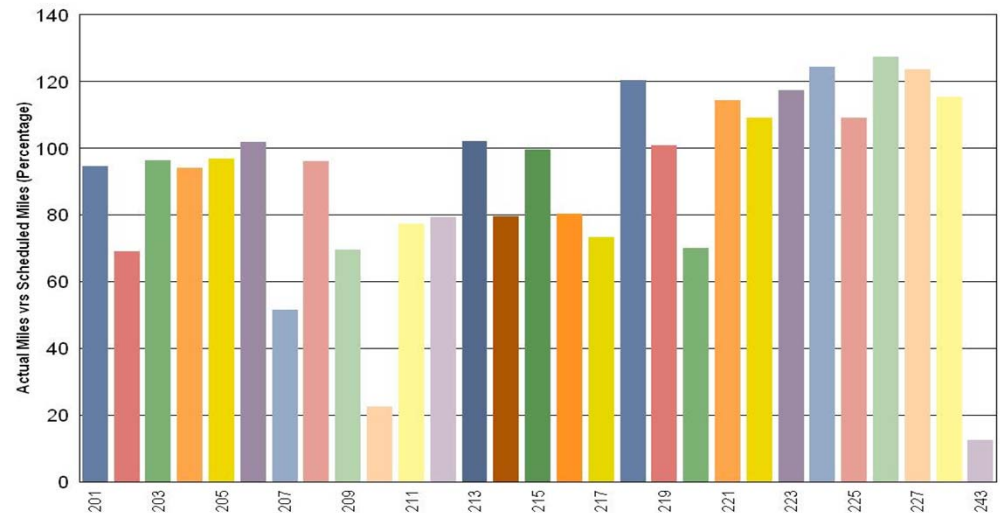
Blue/Expo Lines:

- 146 Vehicle held out of service for floor repair.
- 232 Vehicle held out of service for training purposes.
- 240 Vehicle held out of service friction brake repair.
- 302 Vehicle held out of service for auxiliary inverter repair.

Green Line:

- 210 Vehicle held out of service to fix Propulsion Blower Motor circuit breakers tripping problem. Vehicle is currently back in service.
- 243 Vehicle held out of service to fix leveling problem causing propulsion faults. Vehicle continues undergoing troubleshooting, testing, and repair by staff.

Metro Green Line



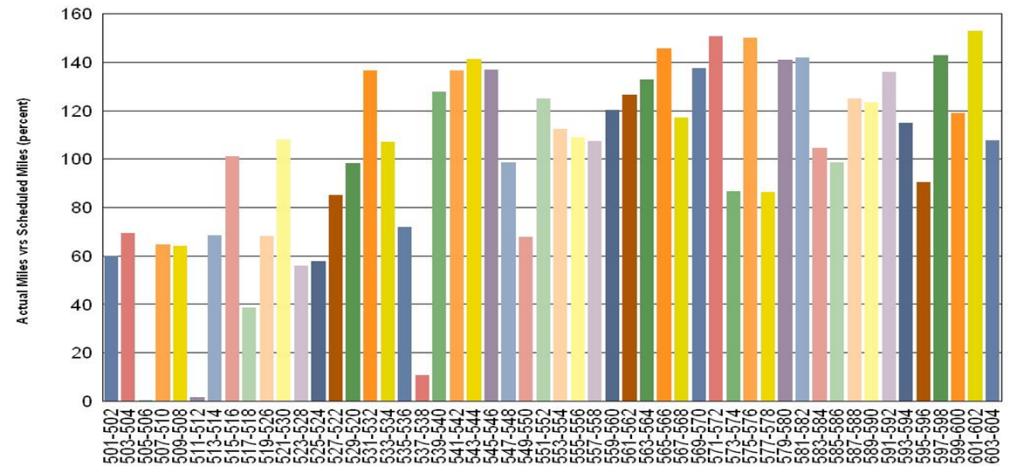
Vehicle Utilization September 2012

Red/Purple Lines:

Explanation for under-used vehicles:

- 505-506** Vehicle held out of service due to brakes not releasing. Repairs complete and vehicle is being recommissioned.
- 511-512** Vehicle held out of service awaiting gearbox delivery which is scheduled for mid-October.
- 517-518** Vehicle held out of service due to late delivery of overhauled gearboxes. Trucks swapped to return vehicle back to service.
- 537-538** Vehicle held out of service due to noisy front truck. Problem is a defective batch of GTO Thyristors which staff is working with vendor on root cause.

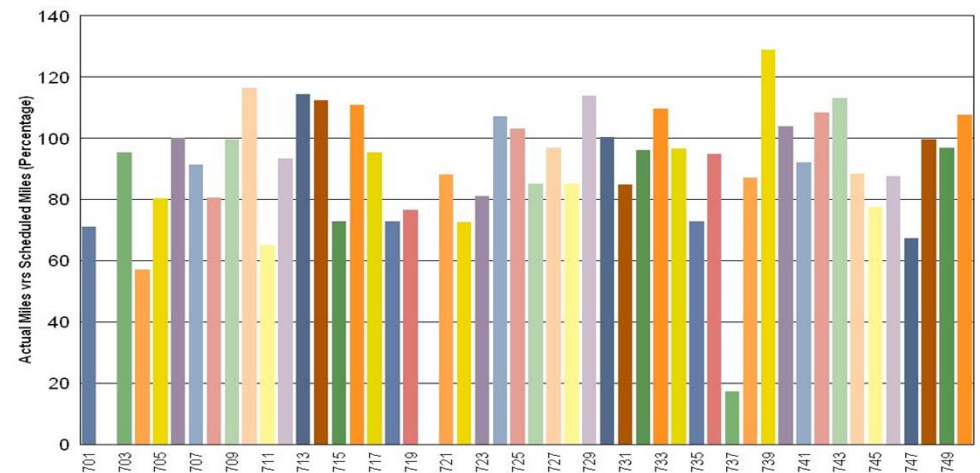
Metro Red/Purple Lines



Gold Line:

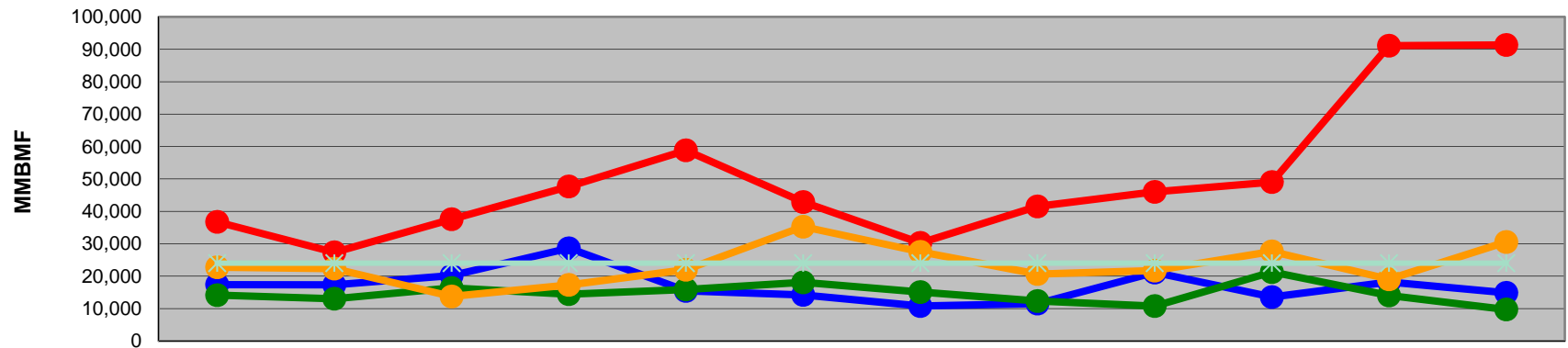
- 702** Vehicle was conditionally accepted on 9/20/12 after which MTA modifications had to be installed.
- 720** Vehicle continues to have burned 208VDC wires in the articulation area. Staff anticipates receiving the tools and parts from vendor in early October to initiate repairs.
- 737** Vehicle continues to have HSCB, friction brake, and pantograph issues. Staff continues to work on a resolution.

Metro Gold Line



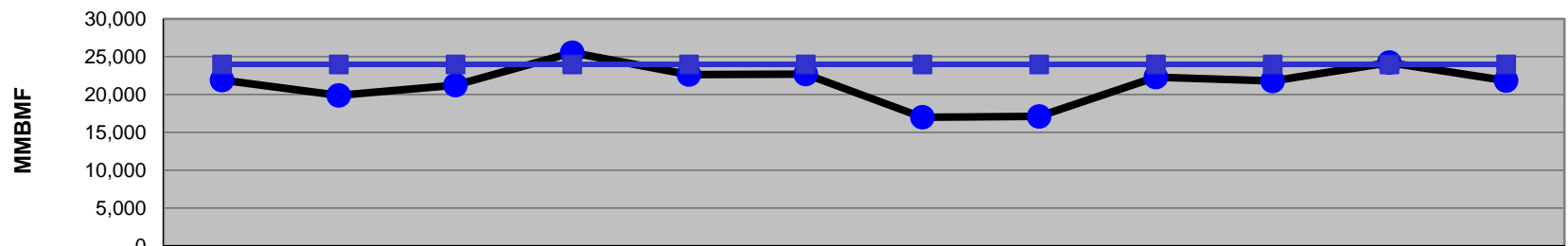
Mean Miles Between Failures (Major) Year to Date

Mean Miles Between Major Failures (12 months)



	Oct-11	Nov-11	Dec-11	Jan-12	Feb-12	Mar-12	Apr-12	May-12	Jun-12	Jul-12	Aug-12	Sep-12
Blue/Expo Lines	17,397	17,322	20,187	28,614	15,454	14,216	10,803	11,546	21,129	13,559	18,185	14,867
Red/Purple Lines	36,745	27,358	37,551	47,660	58,828	42,883	30,255	41,539	46,006	49,022	91,119	91,340
Green Line	14,148	13,029	16,379	14,448	15,895	18,092	15,108	12,342	10,775	21,266	14,043	9,726
Gold Line	22,773	22,340	13,743	17,298	21,981	35,279	27,526	20,649	21,726	27,641	19,040	30,564
Goal	24,000	24,000	24,000	24,000	24,000	24,000	24,000	24,000	24,000	24,000	24,000	24,000

Mean Miles Between Major Failures (all)

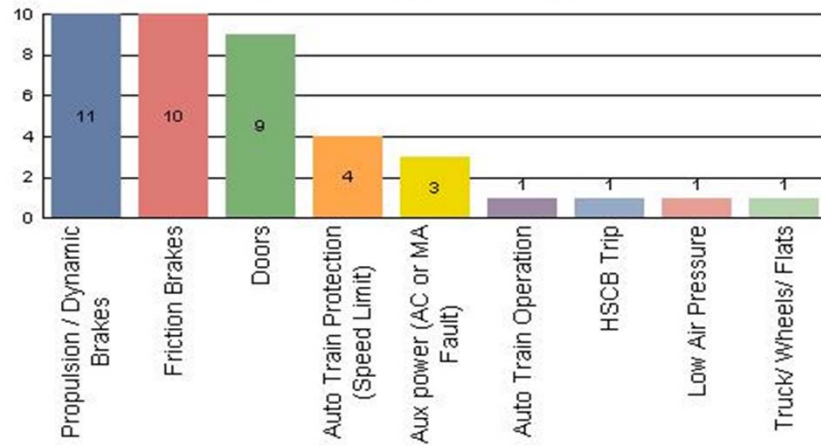


	Oct-11	Nov-11	Dec-11	Jan-12	Feb-12	Mar-12	Apr-12	May-12	Jun-12	Jul-12	Aug-12	Sep-12
All Rail	21,916	19,897	21,245	25,542	22,649	22,712	17,011	17,115	22,314	21,802	24,236	21,846
Goal	24,000	24,000	24,000	24,000	24,000	24,000	24,000	24,000	24,000	24,000	24,000	24,000

Major Incidents September 2012

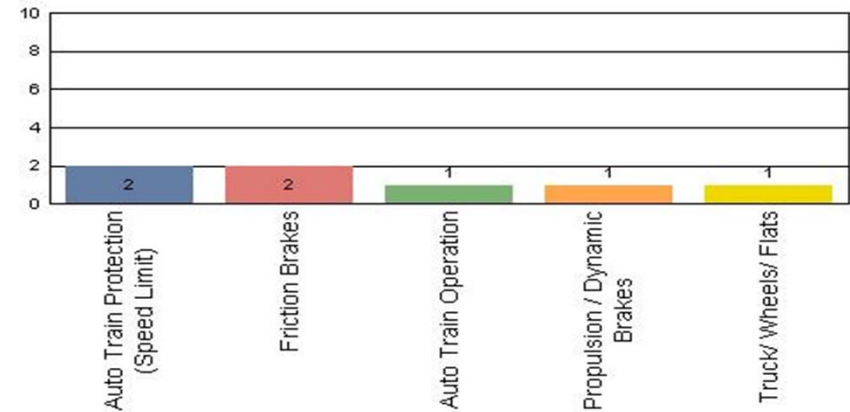
Metro Blue/Expo Line

Top Incident Categories



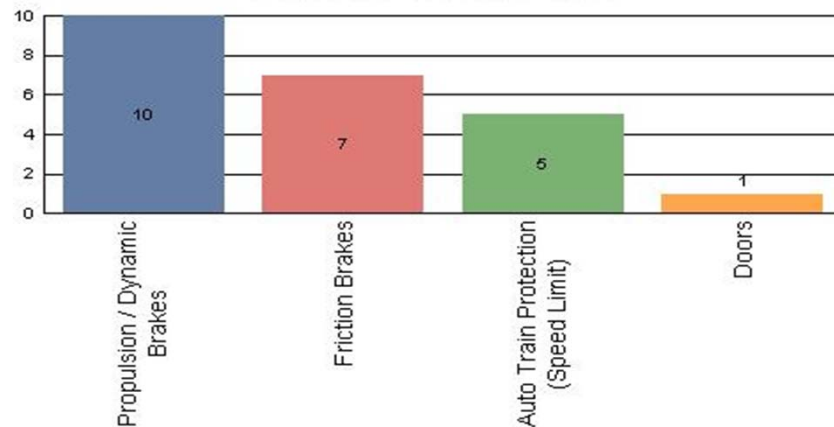
Metro Red/Purple Line

Top Incident Categories



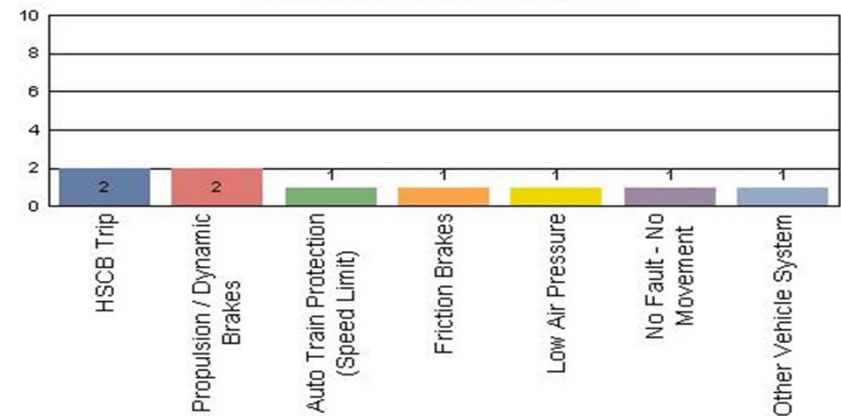
Metro Green Line

Top Incident Categories



Metro Gold Line

Top Incident Categories

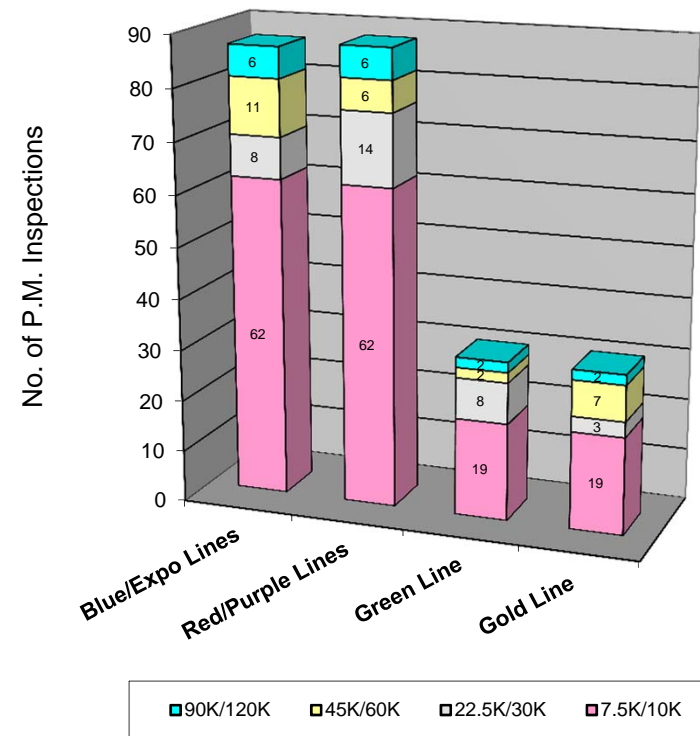


Preventive Maintenance Compliance September 2012

PM Compliance	Oct-11	Nov-11	Dec-11	Jan-12	Feb-12	Mar-12	Apr-12	May-12	Jun-12	Jul-12	Aug-12	Sep-12
Blue/Expo Lines	100%	100%	100%	100%	100%	100%	100%	100%	100%	100%	100%	100%
Red/Purple Lines	100%	100%	100%	100%	100%	100%	100%	100%	100%	100%	*98%	100%
Green Line	100%	100%	96%	100%	100%	100%	100%	100%	96%	100%	100%	100%
Gold Line	100%	100%	100%	100%	100%	100%	100%	100%	100%	100%	100%	100%

September 2012 Preventive Maintenance Inspections

No. of P.M. Inspections	7.5K/10K	22.5K/30K	45K/60K	90K/120K	Totals
Blue/Expo Lines	62	8	11	6	87
Red/Purple Lines	62	14	6	6	88
Green Line	19	8	2	2	31
Gold Line	19	3	7	2	31
Totals:	162	33	26	16	237

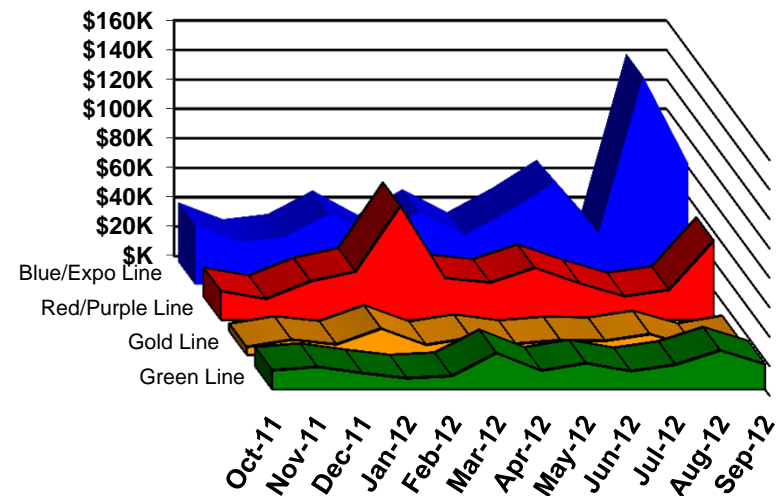


Vandalism & Graffiti Report

September 2012

	Oct-11	Nov-11	Dec-11	Jan-12	Feb-12	Mar-12	Apr-12	May-12	Jun-12	Jul-12	Aug-12	Sep-12	Year-to-Date
Blue/Expo Line	\$41K	\$29K	\$33K	\$49K	\$32K	\$49K	\$34K	\$50K	\$69K	\$35K	\$142K	\$83K	\$645K
Red/Purple Line	\$20K	\$14K	\$26K	\$33K	\$77K	\$28K	\$25K	\$35K	\$25K	\$16K	\$20K	\$54K	\$375K
Green Line	\$13K	\$15K	\$11K	\$8K	\$9K	\$25K	\$13K	\$18K	\$12K	\$17K	\$27K	\$17K	\$185K
Gold Line	\$5K	\$10K	\$7K	\$18K	\$7K	\$11K	\$7K	\$10K	\$9K	\$14K	\$5K	\$11K	\$115K
Totals:	\$78K	\$69K	\$77K	\$107K	\$125K	\$114K	\$79K	\$113K	\$116K	\$82K	\$194K	\$165K	\$1,319K

September 2012 Vandalism & Graffiti - All Rail				
	Qty	Labor	Materials	Totals
Windows replaced	28	\$8,820	\$9,253	\$18,073
Vandal Shields	866	\$26,492	\$9,566	\$36,058
Seats Cleaned	773	\$2,073	\$0	\$2,073
Seats Replaced	1,403	\$44,094	\$42,578	\$86,672
Graffiti removal - other	760	\$15,197	\$1,200	\$16,397
Repainting panels	10	\$4,885	\$495	\$5,380
Totals	3,840	\$101,561	\$63,092	\$164,653



Graffiti Pictures September 2012

Blue Line



Green Line



Gold Line

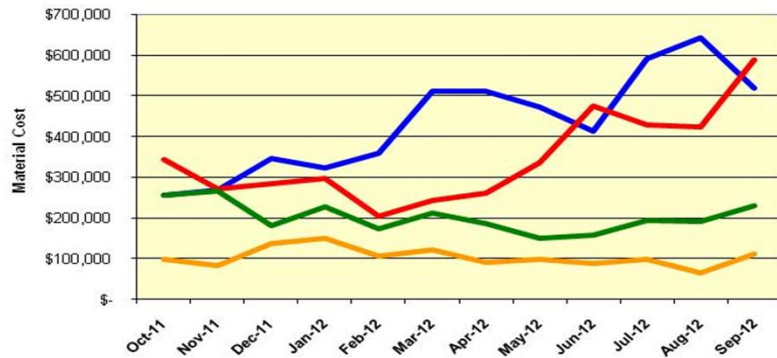


Material and Labor Costs

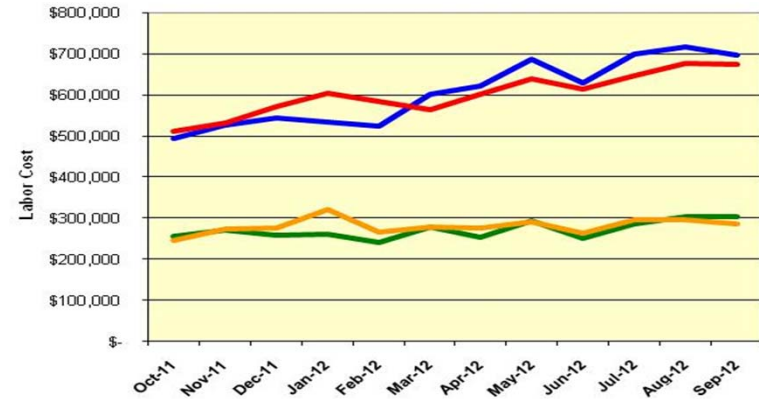
September 2012

<u>MATERIALS</u>	Oct-11	Nov-11	Dec-11	Jan-12	Feb-12	Mar-12	Apr-12	May-12	Jun-12	Jul-12	Aug-12	Sep-12
Blue/Expo Lines	\$ 256,152	\$ 268,760	\$ 346,891	\$ 322,169	\$ 359,911	\$ 510,512	\$ 511,185	\$ 473,281	\$ 414,601	\$ 591,928	\$ 643,006	\$ 520,023
Red/Purple Lines	\$ 344,563	\$ 272,291	\$ 285,916	\$ 296,353	\$ 205,225	\$ 244,902	\$ 260,532	\$ 335,824	\$ 474,908	\$ 428,864	\$ 424,173	\$ 587,362
Green Line	\$ 254,691	\$ 265,489	\$ 180,929	\$ 227,110	\$ 172,152	\$ 210,220	\$ 186,572	\$ 149,660	\$ 157,920	\$ 194,003	\$ 189,811	\$ 230,008
Gold Line	\$ 98,380	\$ 83,425	\$ 138,599	\$ 150,971	\$ 106,736	\$ 121,821	\$ 91,218	\$ 98,407	\$ 88,885	\$ 98,449	\$ 64,112	\$ 112,270
Totals	\$ 953,786	\$ 889,965	\$ 952,335	\$ 996,603	\$ 844,024	\$ 1,087,455	\$ 1,049,507	\$ 1,057,172	\$ 1,136,314	\$ 1,313,244	\$ 1,321,102	\$ 1,449,663

Material Costs



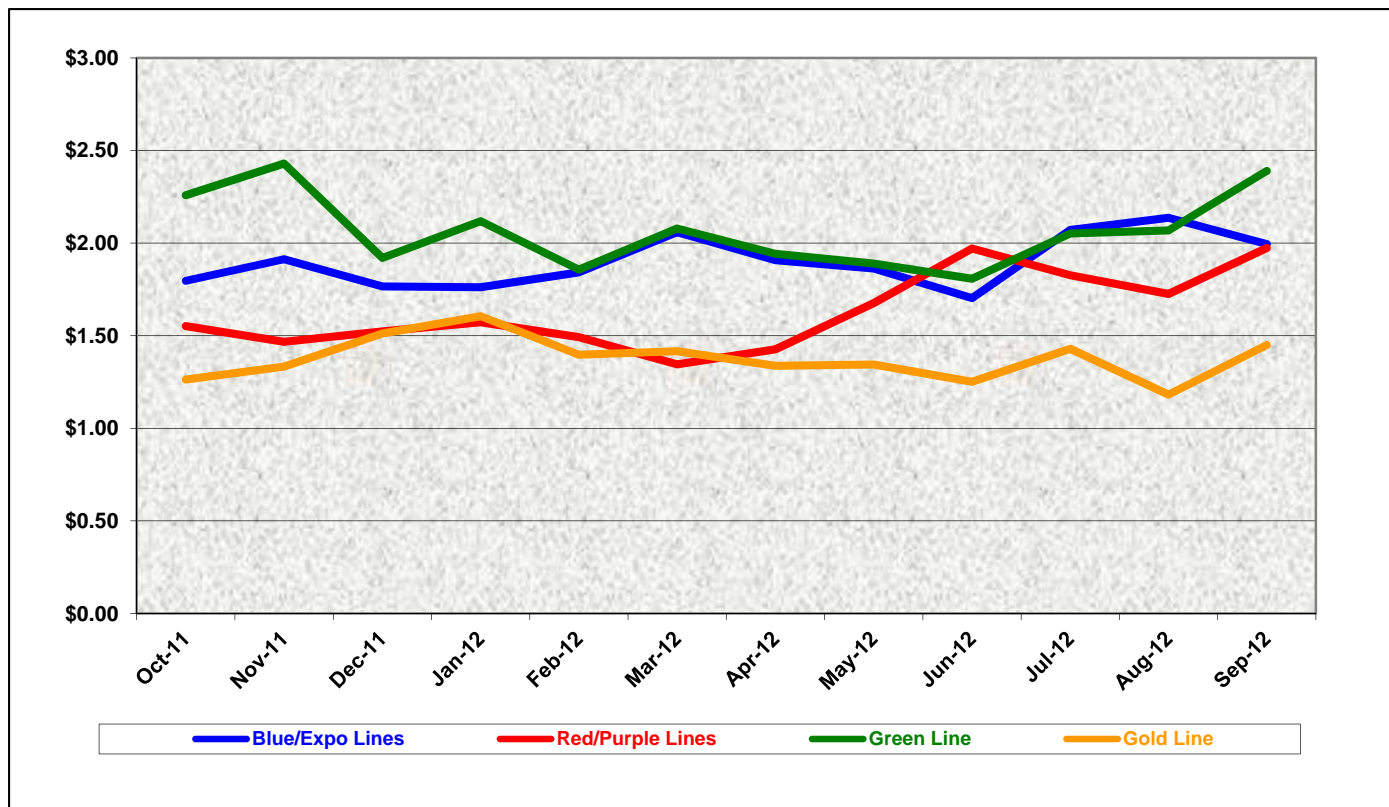
Labor Costs



<u>LABOR</u>	Oct-11	Nov-11	Dec-11	Jan-12	Feb-12	Mar-12	Apr-12	May-12	Jun-12	Jul-12	Aug-12	Sep-12
Blue/Expo Lines	\$ 493,739	\$ 526,600	\$ 544,564	\$ 534,797	\$ 522,603	\$ 601,905	\$ 622,113	\$ 687,897	\$ 628,928	\$ 699,849	\$ 716,987	\$ 695,926
Red/Purple Lines	\$ 510,944	\$ 530,408	\$ 571,885	\$ 602,770	\$ 584,940	\$ 562,875	\$ 602,434	\$ 639,102	\$ 613,032	\$ 645,748	\$ 676,501	\$ 674,192
Green Line	\$ 256,610	\$ 272,603	\$ 259,198	\$ 262,563	\$ 241,042	\$ 278,653	\$ 253,643	\$ 293,492	\$ 251,094	\$ 286,110	\$ 304,066	\$ 304,487
Gold Line	\$ 246,890	\$ 274,017	\$ 276,926	\$ 321,152	\$ 267,372	\$ 277,944	\$ 276,975	\$ 290,375	\$ 264,536	\$ 296,565	\$ 296,078	\$ 286,489
Totals	\$1,508,183	\$1,603,628	\$1,652,573	\$1,721,282	\$1,615,957	\$1,721,377	\$1,755,165	\$1,910,866	\$1,757,590	\$1,928,272	\$1,993,632	\$1,961,094

Cost Per Mile September 2012

Cost per mile:	Oct-11	Nov-11	Dec-11	Jan-12	Feb-12	Mar-12	Apr-12	May-12	Jun-12	Jul-12	Aug-12	Sep-12
Blue/Expo Lines	\$1.80	\$1.91	\$1.77	\$1.76	\$1.84	\$2.06	\$1.91	\$1.86	\$1.70	\$2.07	\$2.14	\$1.99
Red/Purple Lines	\$1.55	\$1.47	\$1.52	\$1.57	\$1.49	\$1.35	\$1.43	\$1.68	\$1.97	\$1.83	\$1.73	\$1.97
Green Line	\$2.26	\$2.43	\$1.92	\$2.12	\$1.86	\$2.08	\$1.94	\$1.89	\$1.81	\$2.05	\$2.07	\$2.39
Gold Line	\$1.26	\$1.33	\$1.51	\$1.61	\$1.40	\$1.42	\$1.34	\$1.34	\$1.25	\$1.43	\$1.18	\$1.45



No facility costs are included

Absences vs. Overtime

September 2012

ABSENCE TYPE and HOURS	3940 Admin.	3941 Blue	3942 Red	3943 Green	3944 Gold	3947 Expo	Total
AWP-ABSENT W/O PERMISSION	0.00	8.00	0.00	8.00	0.00	0.00	16.00
BER-BEAVEMENT	0.00	64.00	40.00	0.00	0.00	0.00	104.00
CTO-COMPENSATORY TIME OFF	12.00	220.48	392.00	152.00	170.00	52.00	998.48
CUT-EMPLOYEE LEAVES EARLY	1.03	1.79	0.00	0.98	1.94	0.00	5.74
CVA - CASUAL VACATION	0.00	66.00	608.50	0.00	232.00	0.00	906.50
DSL-DISABILITY LEAVE/LONG	0.00	608.00	168.00	152.00	272.00	0.00	1,200.00
EFH-EMG. FLOAT HOL.	0.00	8.00	80.00	64.00	40.00	0.00	192.00
ETO-EXCUSED TIME OFF	10.50	60.85	41.41	7.00	38.26	0.50	158.52
FMI-FAM IND INJURY	0.00	0.00	0.00	80.00	0.00	0.00	80.00
FML-FAMILY CARE LEAVE	0.00	472.00	360.00	80.00	24.00	0.00	936.00
FMS-FAMILY LEAVE SICK	0.00	220.30	148.00	16.00	16.00	0.00	400.30
HLF-HOLIDAY FLOATING	40.00	350.00	368.00	112.00	208.00	32.00	1,110.00
HNP-HOLIDAY NOT PAID	0.00	0.00	0.00	16.00	8.00	0.00	24.00
HOL-HOLIDAY LEGAL	88.00	528.00	496.00	168.00	128.00	24.00	1,432.00
II-INDUSTRIAL INJURY	0.00	24.00	336.00	80.00	0.00	0.00	440.00
IIR-INDUS INJURY-REOCCUR.	0.00	136.00	16.00	0.00	0.00	0.00	152.00
JUR-JURY DUTY	0.00	0.00	8.00	8.00	0.00	0.00	16.00
LC1-LABOR CODE 233	16.00	89.50	123.68	32.00	144.00	8.00	413.18
MLN-MILITARY ABSENCE-UNPAID	0.00	0.00	0.00	32.00	0.00	0.00	32.00
RTO-REQUESTED TIME OFF-NO PA	0.00	34.02	0.00	19.76	0.00	0.00	53.78
SCK-SICK PAY	0.00	96.00	64.00	40.00	64.00	0.00	264.00
SCW-SICK WITHOUT PAY	0.00	48.00	8.00	56.00	16.00	0.00	128.00
TAR-TARDY	0.00	3.59	2.51	1.57	0.05	0.00	7.72
UB-UNION BUSINESS	0.00	0.00	0.00	0.00	8.00	0.00	8.00
UNP-UNION BUS PAID	0.00	0.00	0.00	0.00	48.00	0.00	48.00
VAC-VACATION	112.00	1,081.22	708.00	298.67	284.00	32.00	2,515.89
VAC-VACATION WHILE SICK	0.00	0.00	0.00	0.00	48.67	0.00	48.67
Total Absence Hours	280	4,120	3,968	1,424	1,751	149	11,691
Number of Work Force (assigned)	34	128	120	53	52	6	393
Full Work Force hours/month	5,892	22,182	20,796	9,185	9,012	1,040	68,107
Absence as a % of Work Force	5%	19%	19%	16%	19%	14%	17%
OVERTIME TYPE and HOURS	3940	3941	3942	3943	3944	3947	Total
CTB-COMPENSATORY TIME TO BANK	2	195	255	180	108	0	741
OTP-PREM OVERTIME	516	4866	4682	1417	1451	148	13081
WLO-Worked Lunch Overtime	22	129	165	74	86	8	483
Total	539	5190	5102	1672	1645	156	14304
Overtime as a % of Work Force	9%	23%	25%	18%	18%	15%	21%
UNCOVERED ABSENCES	3940	3941	3942	3943	3944	3947	Total
Absences FTE	2	24	23	8	10	1	67
OTP FTE	3	30	29	10	9	1	83
FTE Difference	-1	-6	-6	-2	1	0	-16

Rail Vehicle Engineering Project Summary

September 2012

Preparation of Engineering Technical Specifications	Tracking #	Status
Red Line AC Gear Box (Rev. 0)	A650/TS/026	Released to Procurement for bid
MBL Battery Set	P865/P2020/TS/069	In developing process
Vital Relay Calibration P865/P202	Sole Source	In Process
Windows glass and rubber glazing specification	P865-P2020/TS-066	Released to Procurement for bid
Friction Brake Kit Less Air Compressor Overhaul	P2000/TS/035 Rev 0	Released to Procurement for bid - SS was signed - Going to Board for approval
A650 Battery Specification	A650/TS/39	Released to Procurement for bid - Answered Hoppeke Questions
Powered Axle Overhaul SOW	P865-P2020/TS/063 and 052	Released to Procurement for bid
Seat Insert	P865-P2020/TS/62	Released to Procurement - Awarded to Sardo
Red Line DC Gear Box (Rev. 0)	P650/TS/040	Released to Procurement for bid
Vandal Shield for all lines	A650-P865-P2000-P2550/TS/012	Released to Procurement- Bid was opened on 07/31/12 - Waiting for Mini Board approval
Aux power supply equipment (APSE) - Static Inverter	P865-P2020/TS/065 Rev. 0 [2 Parts]	Released to Procurement for bid
Tire kit specification	P865-P2020/TS/064	Released to Procurement for bid
Red Line (Base Buy) DC Traction Motor	P650/TS/041	Released to Procurement - Bid is due 09/14/12
MBL HVAC Compressor	P865/P2020/TS/067 Rev. 0	Released to Procurement for bid
Head Sing LED	P2000/TS/xx	Draft in process
Chevron springs	P865/P2020/TS/068 Rev. 0	Released to Procurement for bid
Filter-Fresh Air	P2550/TS/004	In review process
Filter-Return Air	P2550/TS/005	In review process
General - All Lines		Status
Roadway Worker Protection		CPUC/Installing ProTran1 Device-P865/P2020/P2000 completed, A650/P2550 in process
Fleet Failure Analysis		CH2M Hill - LTK
New Radios installed to replace old radios		Meeting 3/7/2012-Contract awarded, MBL and P2000 are in installation process.
Bike Space		P2000/P2550/A650 Fleet modification completed.
P2000 Overhaul Program		Status
Master Controller - Bombardier Refurbish		Ongoing Program
RSS and EOSS Bundle Cables/Connectors - Glenair		In Progress
CCH possible replacement (Focon)		Send information to Focon
TWC Calibration procedure.		Base Line data confirmed and existing TWC test equipment mapped for performance. Systra on board developing TWC calibration procedures.
P865/P2020 Program		Status
Remove the remotely reset CB1 Breaker		Fleet modification completed.
"G" force measurement on Transponder installed on P865/P2020		H&K installed "G" sensor on transponder and collected data for analysis - 03/08/12. New carbody mounted bracket were tested and completed fleet modification. New antennas are in installation progress.
Under seat - No motion relays		ABB Prototype installed on 07/24/12 for one month test period. Test was successful. In process of procuring kits.
Replace air compressor DC motor with AC motor		Knorr prototype on order - Due in October 2012
P2000 Gold to Green		Status
Signal package conversion (Gold to green)		On-hold
TWC Investigation / Calibration (Systra)		90% complete. Base line established, TWC antenna jig designed and built, procedure written and worked though. Requires final document review and issue.
A650 Overhaul Program		Status
Midlife Overhaul Specification		Draft complete by Metro. In process of Consultant selection to complete.
HPT Upgrade		Wabtec Proposal received. NTP issued 08/08/12. One car set prototype in testing
ABI New Traction Motor Mount		ABI for Fleet Modification in progress. A total of twenty seven (86) trucks were completed.
Friction Brake Kit Overhaul		Overhaul program in place - Wabtec (30 Base cars were added and approved)
Ribbed Rubber Flooring PRF		Dealing with OEM - No bids received from others. Proceeding with PRF.
Door Operator Gearbox and Rollers Overhaul		In Progress - Buying kits from Vapor Stone to overhaul GB and motor in house.
H-4 electronic units		Unit upgrade - Fleet issues (Wabtec) to provide new unit proposal.
P2550		Status
Vehicle Acceptance		Fifty cars have been Final Accepted.
3P Flip Up Seat Finger Guard		Submitted SS to Procurement - Testori
Find alternative Vendor for Reverse Engineer PCB Boards P2550		In Progress
Compressor Dessicant Material		In Progress
Rubber Boots (High Voltage)		In Progress - Vulcanite. Bought from OEM through A&E Telecom.
Cyclope light and Destination Sign Glass		In Progress - NASG
Ground Brush Schunk (Lamellar Seal failure investigation)		Awaiting ABI/Schunk final update.
Expo		Status
Readiness		Metro-RFS Engineering is supporting qualification and test activities of vehicles and wayside.
ATP Certification		Mainline Testing Completed; waiting for final letter
P2000 Couple/un-couple issues		Investigation completed - Test was successful - Fleet modification in process.
Junction of Blue line and Expo line Testing		Safe Braking test completed at Culver City Station and report of successful test completed.
Junction of Blue line and Expo line Testing - ATP		Recent testing (07/26/12) indicated signal track problem at Culver City. Wayside are recertify track circuits. Further testing will be undertaken when complete between RFS engineering and Wayside signaling.
Expo Frog Testing		Ensco Submitted Final Report on 09/07/12
ATP Cab Signal Mapping at the Junction and Expo Line Phase I		
Close out-Normal Run		Completed Normal Run , need to finish Reverse run for the entire Expo line and the Junction.



P2550 Vehicle Acceptance Program

September 2012

Vehicle Status Update:

- Metro has received all 50 cars. Final acceptance of cars 701 and 702 on September 26, 2012.

Engineering Activities Update:

- Event recorder: Configuration continues to be finalized. Latest software revision being installed for final qualification. To date, 10 cars completed.
- ATP/TWC Configuration: Final software was tested in August. Three items were identified as requiring resolution. A-STIS to test software/wiring remedies scheduled for the first week of October 2012.

Project Management:

- Contract spares continue to be delivered to Metro and estimated to be 90% complete. All parts needed for day-to-day maintenance have been received. Critical parts needed for heavy repairs are beginning to arrive.
- Daily and bi-weekly meetings are scheduled with contractor management to address project issues.

QA-Warranty Program Projects Summary

September 2012

QA-WARRANTY ACTIVITIES

- Accepted P2550 50th and final vehicle on 9/20/12.
- A650 Base Buy & Option Car Fleet Warranty Truck Frame Mod Campaign (52 of 220 Trucks modified to date).
- On-Going, Management's Special Interest Articulation / Cab Wiring Tightness Checks MBL & MGL P2000 Fleet Cars (31 of 52 completed). On 9/25/12, management decision issued to suspend Wire Tightness Inspections for the remainder of the 2000 fleet.
- On-Going, Management's Special Interest 7.5K Supplemental Inspections & Articulation MBL & MGL P2000 Fleet Cars (38 of 52 completed).
- QA PMI Audits, Spot Checks & Surprise/Unannounced Audits performed (8).
- FAI's or equipment inspection/failure investigations (18).
- Parts inspected New, R&R or Warranty Returns (1,807), Parts rejected (154 of 1,807)
- Administration/ERS documentation processed (3,000 plus).
- QA oversight, MBL & MGL Fleets, (25 of 92 LRV's) Truck Inspections, Journal Bearing Housing Inspections, Damper Inspections, Wheel Back-to-Back Measurements, Wheel Flange Measurements, Wheel Residual Mount Inspections.
- On-Going Warranty-QA interest oversight & tracking: Overhauls / Mod Programs, (A650/P2000/P2020/865/P2550) Propulsion System, Master Controllers, Capacitor Banks, Air Compressors, Aux Power, Couplers, Gearboxes, Articulation Diaphragms, Friction Brakes, HPT's, Brake Resistor Grids, T/M's, MA's, HVAC, Doors, A/C Motors – (Blowers & Evaporators).

RFS Instruction Department Activities September 2012

Training classes completed during the month of September 2012

Description	Course Hours	Student Count	Training Hours
<u>Blue & Expo Line Training - (P865/2020 & P2000 LRV):</u>			
RFS 2-WEEK RAIL INTRODUCTION	80	1	80
RFS SIEMENS 2000 PROPULSION	80	12	960
Total Blue Line Training (Hours):			1,040
<u>Red Line Training (Breda A650 HRV):</u>			
RFS 2-WEEK RAIL INTRODUCTION	80	3	240
RFS SIMMONS WHEEL TRUE REFRESHER	4	12	48
Total Red Line Training (Hours):			240
<u>Total RFS Instruction for the month of September 2012 (Hours):</u>			<u>1,280</u>
<u>Other Instruction Activities</u>			
P2550 HRMM manual review			80
RFS SIEMENS 2000 VEHICLE COURSE preparations			120
<u>Total Other Instruction Activities</u>			<u>200.0</u>

Core Vehicle Training Completed: BLUE RED GREEN GOLD

Percentage of core vehicle training complete: 76.4% 90.2% 83.8% 86.9%
Siemens P2000 training complete: 42.3% N/A N/A N/A

Average Specialist Rail Experience Level in Years: 10.5 10.0 8.8 9.8

Core Training Completed

