



Rail Fleet Services Monthly Report November 2013



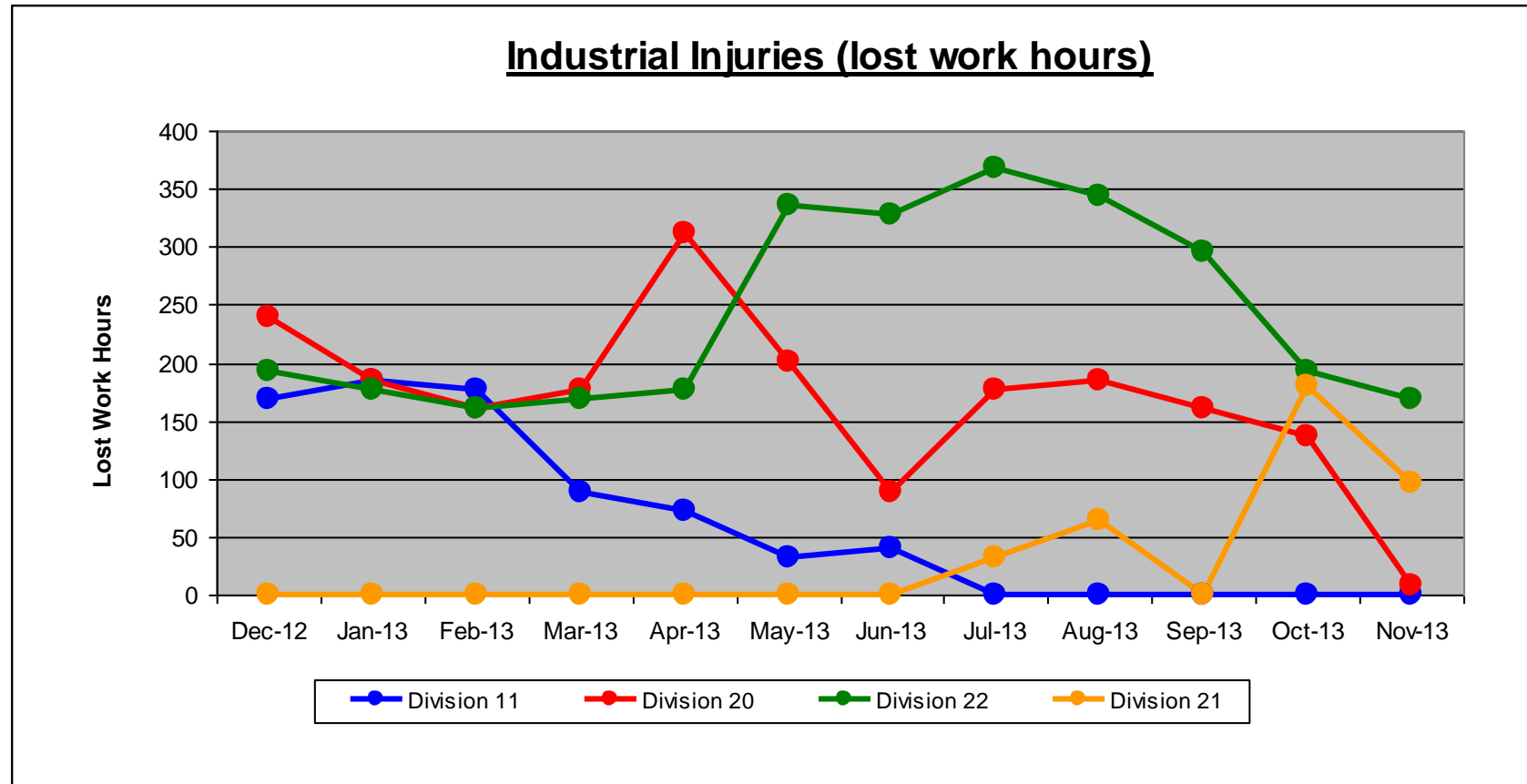
Metro

Table of Contents

•	Safety		
	- Industrial Injuries	Page	3
	- Rail Vehicle Accidents & Major Incidents	Page	4
•	Customer Service		
	- Service Delivery – AM/PM Pull-Outs	Page	5
	- Vehicle Utilization – Blue Line & Green Line	Page	6
	- Vehicle Utilization – Red Line & Gold Line	Page	7
	- All Train Delay Incidents	Page	8
	- Mean Miles Between Failures (Major)	Page	9
	- Mileage Between Data Range (by month)	Page	10
•	Business Processes		
	- Major Incidents	Page	11
	- Preventive Maintenance Compliance	Page	12
	- Wrench Turning	Page	13
•	Finance		
	- Vandalism & Graffiti Costs	Page	14
	- Graffiti Pictures	Page	15
	- Labor & Material Costs	Page	16
	- Cost per mile	Page	17
	- Absence vs. Overtime	Page	18
•	Engineering		
	- Rail Vehicle Engineering Project Summary	Page	19-22
•	Quality Assurance		
	- Warranty Program Projects Summary	Page	23
•	Growth		
	- RFS Instruction Department Activities	Page	24

Industrial Injuries – Lost Work Hours November 2013

	Dec-12	Jan-13	Feb-13	Mar-13	Apr-13	May-13	Jun-13	Jul-13	Aug-13	Sep-13	Oct-13	Nov-13	12-Month Period
Division 11	168	184	176	88	72	32	40	0	0	0	0	0	760
Division 20	240	184	160	176	312	200	88	176	184	160	136	8	2,024
Division 22	192	176	160	168	176	336	328	368	344	296	192	168	2,904
Division 21	0	0	0	0	0	0	0	32	64	0	180	96	372
Totals	600	544	496	432	560	568	456	576	592	456	508	272	6,060



Rail Vehicle Accidents & Major Incidents

November 2013

Repair Costs	Dec-12	Jan-13	Feb-13	Mar-13	Apr-13	May-13	Jun-13	Jul-13	Aug-13	Sep-13	Oct-13	Nov-13	12-Month Period
Blue/Expo Line	\$5,262	\$18,740	\$3,288	\$2,959	\$237,017	\$11,700	\$4,926	\$14,951	\$2,338	\$3,700	\$11,475	\$13,838	\$330,194
Red/Purple Line	\$0	\$2,244	\$0	\$0	\$4,165	\$0	\$0	\$0	\$1,358	\$0	\$0	\$0	\$7,767
Green Line	\$503	\$202	\$126	\$0	\$0	\$0	\$0	\$0	\$0	\$0	\$0	\$0	\$831
Gold Line	\$0	\$176	\$0	\$0	\$0	\$261	\$8,220	\$0	\$537	\$0	\$0	\$0	\$9,194
Totals	\$5,765	\$21,362	\$3,414	\$2,959	\$241,182	\$11,961	\$13,146	\$14,951	\$4,233	\$3,700	\$11,475	\$13,838	\$347,986

Rail Vehicle Accident Costs - November 2013				
Date	Incident #	Problem Code	Incident Description	Cost
Metro Blue Line				
11/12/13	2387036	Train vs. Object	A 10-71 was reported for Car 121 making contact with shopping cart on approach to Florence Station.	\$ 2,090
11/22/13	2390877	Train vs. Vehicle	A 10-73 was reported at 10th and Long Beach, no injuries, auto fled the scene.	\$ 859
11/25/13	2391647	Train vs. Object	A 10-71 was reported for incident involved train vs bicycle: Train # 103, N/B Track 1 Gage Grade Crossing.	\$ -
11/26/13	2392341	Train vs. Object	Incident involved train vs bicycle at Gage Grade XX.	\$ -
Total				\$ 2,949
Metro Expo				
11/14/13	2387963	Train vs. Vehicle	A 10-73 was reported at Intersection of Pico and Flower .	\$ 2,292
11/27/13	2392738	Train vs. Vehicle	A 10-73 was reported at Southbound Track 2 Flower and 10 Freeway.	\$ 8,597
Total				\$ 10,889
Metro Gold Line				
11/21/13	2390628	Train vs. Pedestrian	A 10-72 was reported at 1st Street Bridge.	\$ -
Total				\$ -
Grand Total				\$ 13,838
(10-71) = Train vs. Object, (10-72) = Train vs. Pedestrian, (10-73) = Train vs. Vehicle (10-74) = Train vs. MTA Vehicle, (10-75) = Derailment				

Note: Repair costs are only the expenses captured during the time period of the report. Actual costs may be significantly higher, if repairs are spread out over several months.

Service Delivery November 2013

Blue/Expo Line Fleet Size: 92

<u>Pull Out</u>	<u>Vehicles Required</u>	<u>Average Available</u>	<u>% Up (Down)</u>
Weekday:	78	80	103%
Weekend:	60	67	112%
Late Pullouts: 2*			
Monthly Mileage:	654,809		

Red/Purple Line Fleet Size: 104

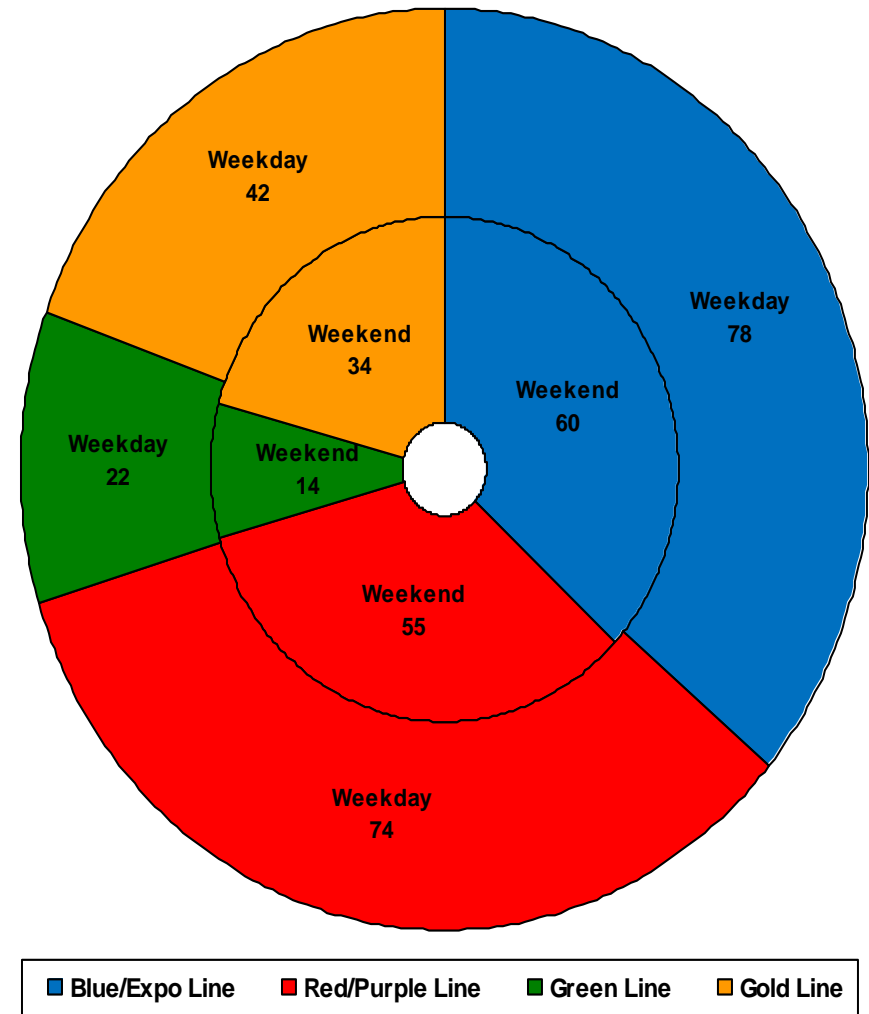
<u>Pull Out</u>	<u>Vehicles Required</u>	<u>Average Available</u>	<u>% Up (Down)</u>
Weekday:	74	83	112%
Weekend:	55	77	140%
Late Pullouts: 0*			
Monthly Mileage:	636,268		

Green Line Fleet Size: 29

<u>Pull Out</u>	<u>Vehicles Required</u>	<u>Average Available</u>	<u>% Up (Down)</u>
Weekday:	22	23	105%
Weekend:	14	18	129%
Late Pullouts: 0*			
Monthly Mileage:	226,798		

Gold Line Fleet Size: 50

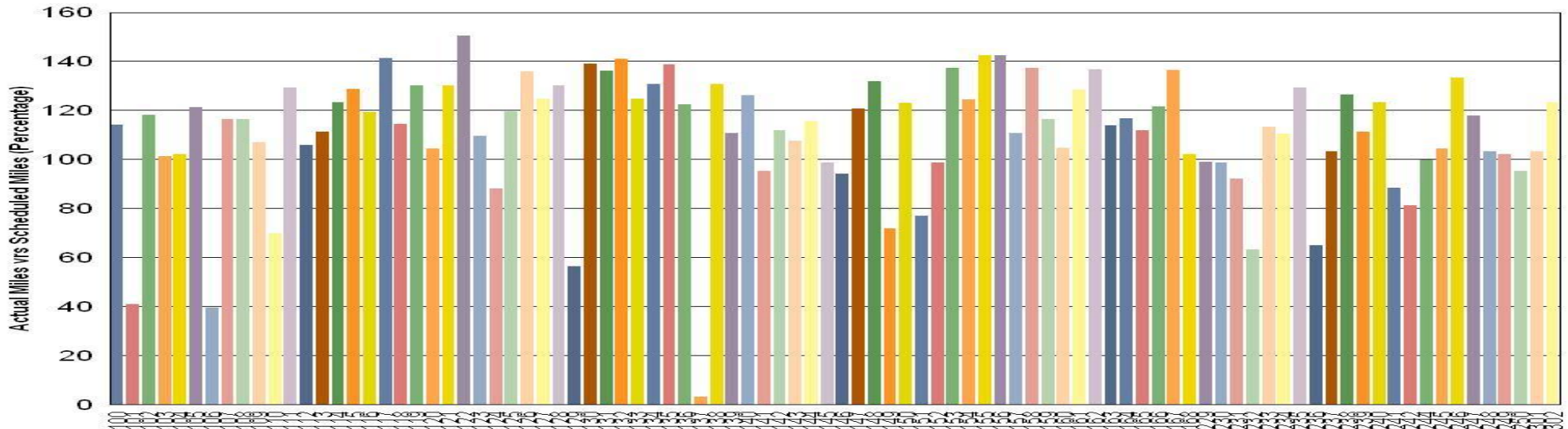
<u>Pull Out</u>	<u>Vehicles Required</u>	<u>Average Available</u>	<u>% Up (Down)</u>
Weekday:	42	44	105%
Weekend:**	34	40	118%
Late Pullouts: 0*			
Monthly Mileage:	321,676		



Metro

Vehicle Utilization November 2013

Metro Blue/Expo Line



Blue/Expo Line:

Car # 106 Out of service for interior graffiti abatement and exterior painting.

Car # 137 Out of service for major accident repair.

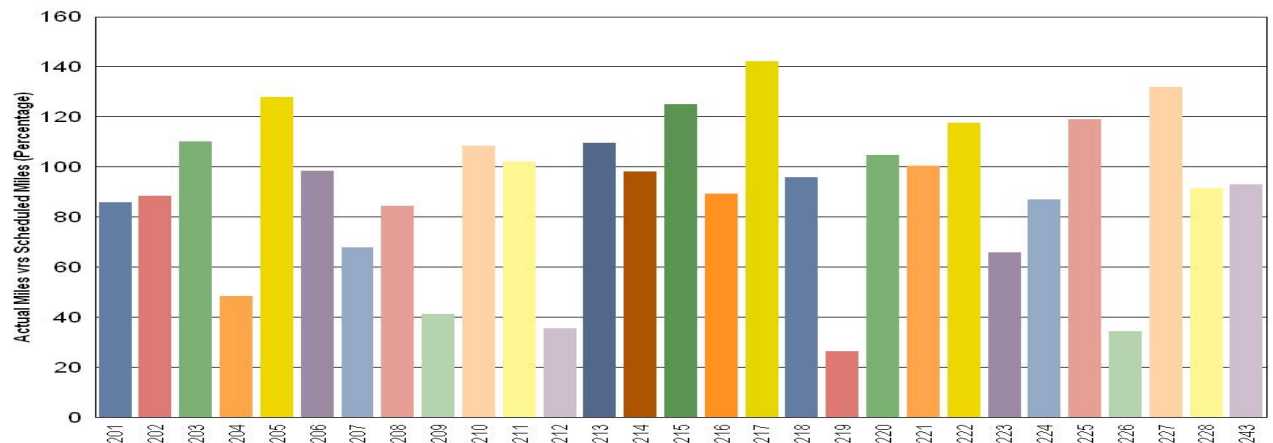
Green Line:

Car # 212 Out of service for a friction brake overhaul and wheel true for flats.

Car # 219 Out of service for 90K and open work orders.

Car # 226 Out of service for graffiti abatement.

Metro Green Line



Note: Percentage includes an average 4% mileage deduction for yard mileage and vehicle testing.

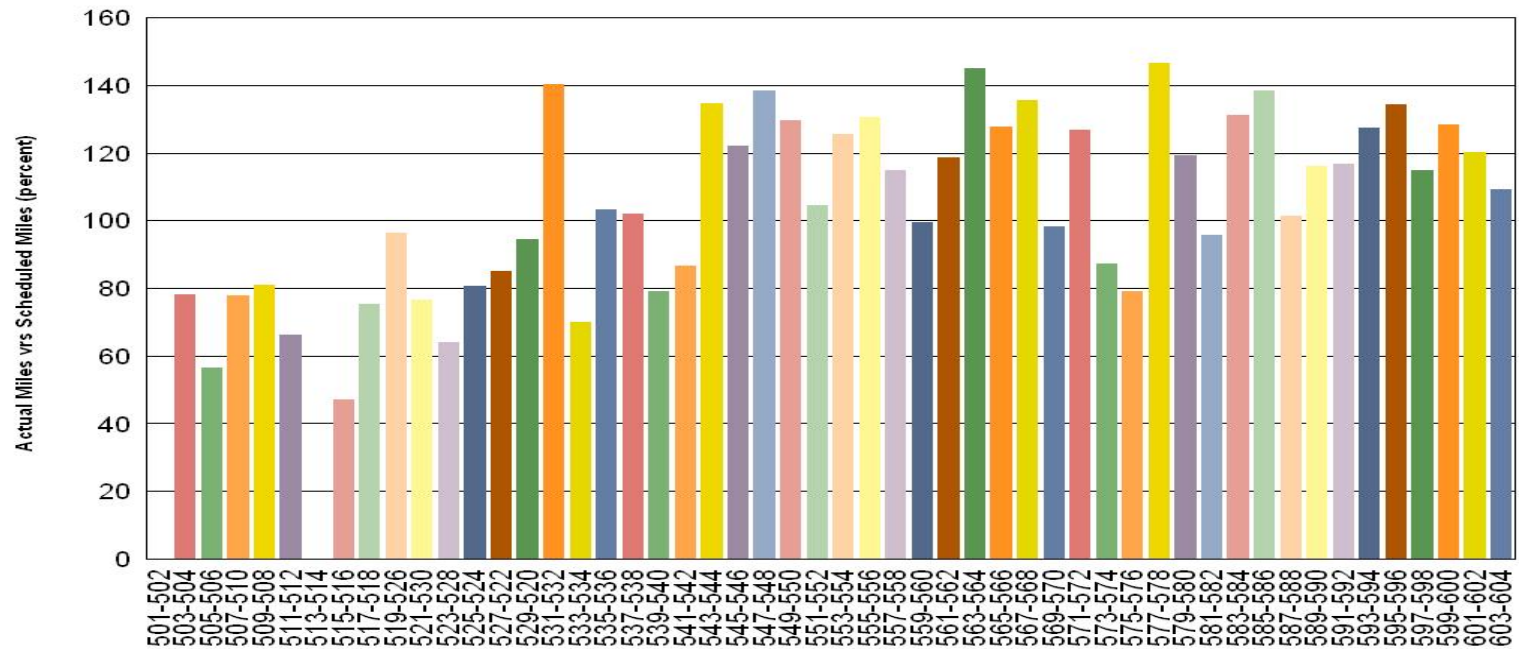
Vehicle Utilization November 2013

Red/Purple Line:

Car # 501-502 Out of service for floor repairing.

Car # 513-514 Out of service for floor repairing.

Metro Red/Purple Line

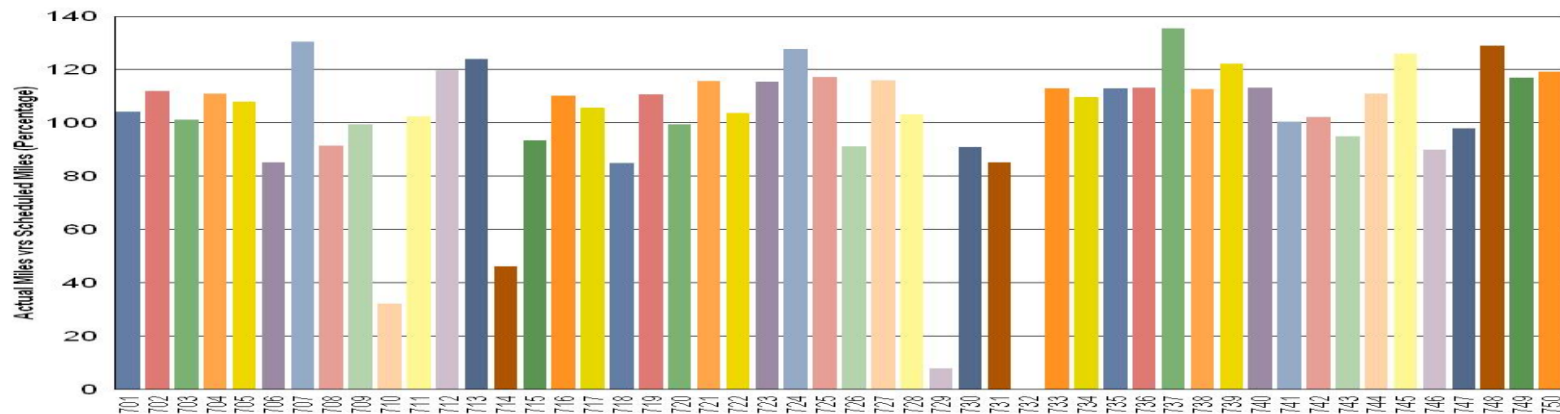


Gold Line:

Car # 729 Out of service due to a wheel diameter sensing problem.

Car # 732 Out of service due to damage, waiting for parts, and traction motor wiring repair.

Metro Gold Line

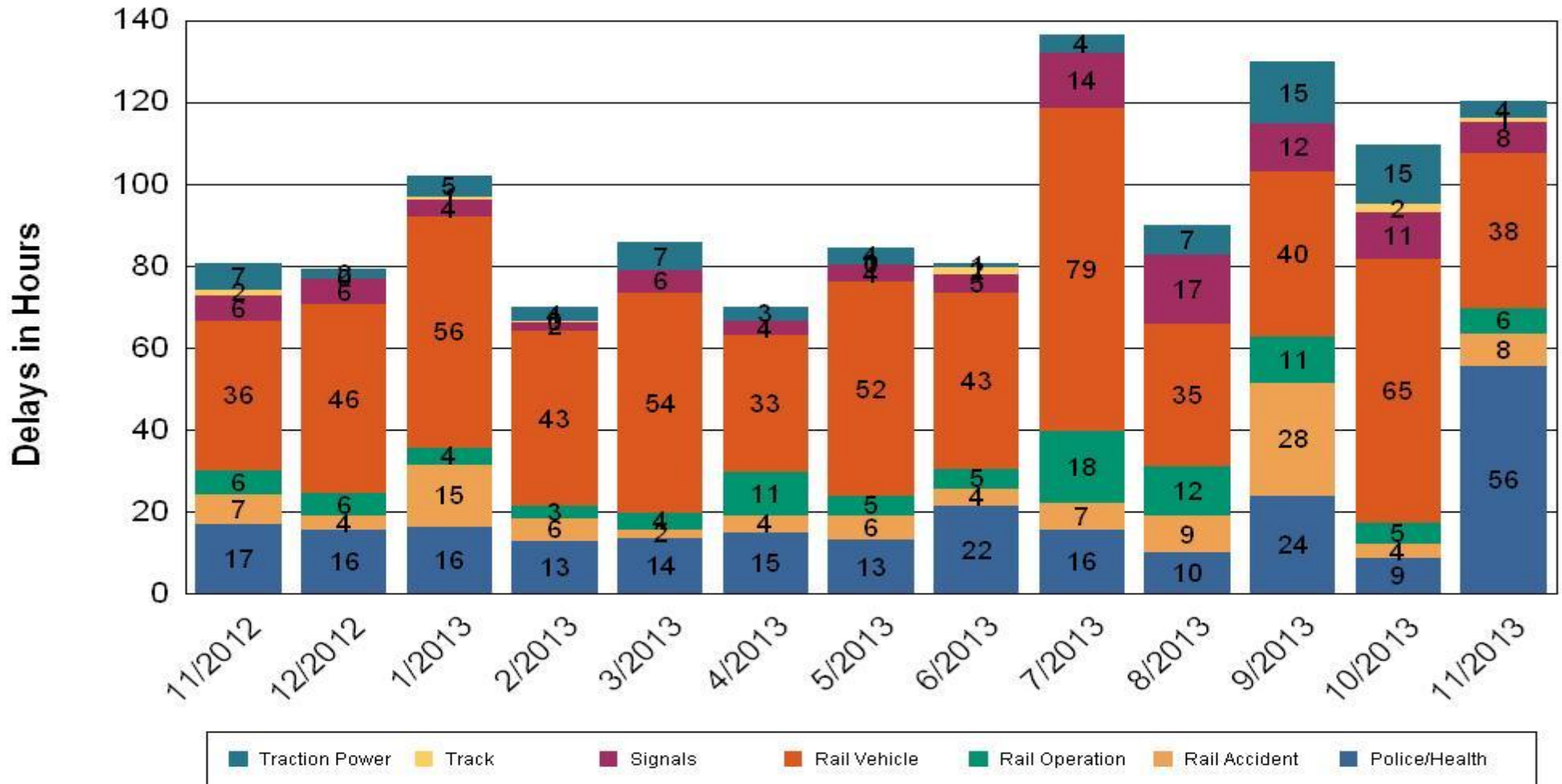


•Percentage includes an average 4% mileage deduction for yard mileage and vehicle testing.

All Train Delay Incidents November 2013

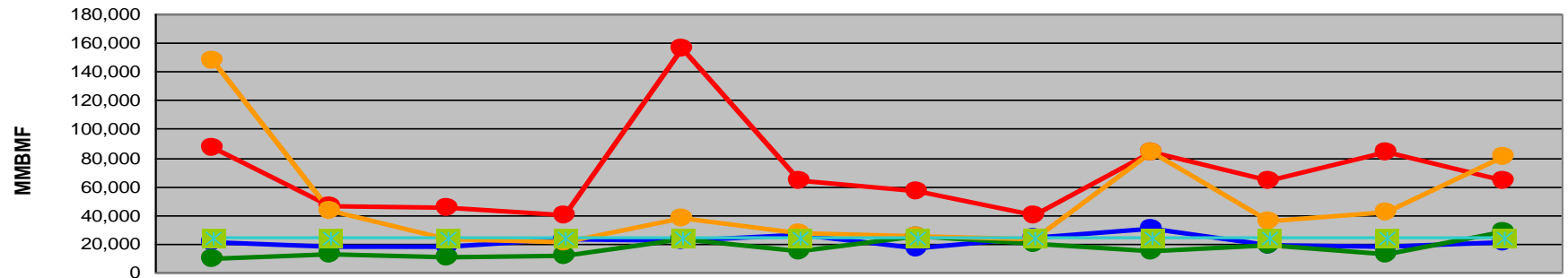
All Train Delays

Totals Include the delay to all trains involved (not just the primary incident)



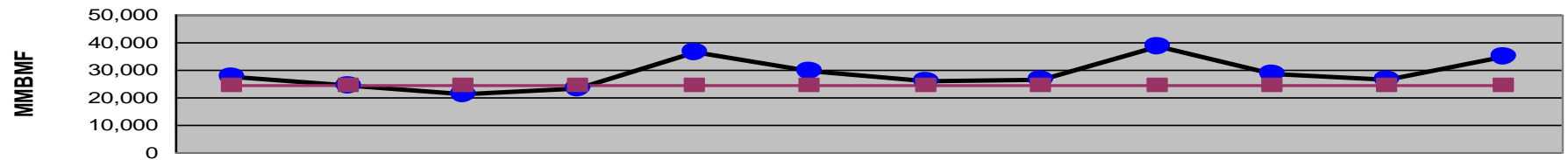
Mean Miles Between Failures (Major) Year to Date

Mean Miles Between Major Failures (by line)



	Dec-12	Jan-13	Feb-13	Mar-13	Apr-13	May-13	Jun-13	Jul-13	Aug-13	Sep-13	Oct-13	Nov-13
Blue/Expo Lines	20,542	17,876	17,418	23,226	21,992	25,783	17,082	23,591	30,773	19,332	17,764	21,123
Red/Purple Lines	87,167	46,203	44,509	39,694	155,798	63,886	56,770	39,539	83,229	63,847	83,821	63,627
Green Line	9,341	12,485	10,752	11,772	22,981	14,742	25,412	19,703	14,712	18,988	12,516	28,350
Gold Line	147,123	42,687	22,795	20,817	37,306	27,296	25,272	23,454	83,320	35,489	41,867	80,419
Goal	24,000	24,000	24,000	24,000	24,000	24,000	24,000	24,000	24,000	24,000	24,000	24,000

Mean Miles Between Major Failures (all)

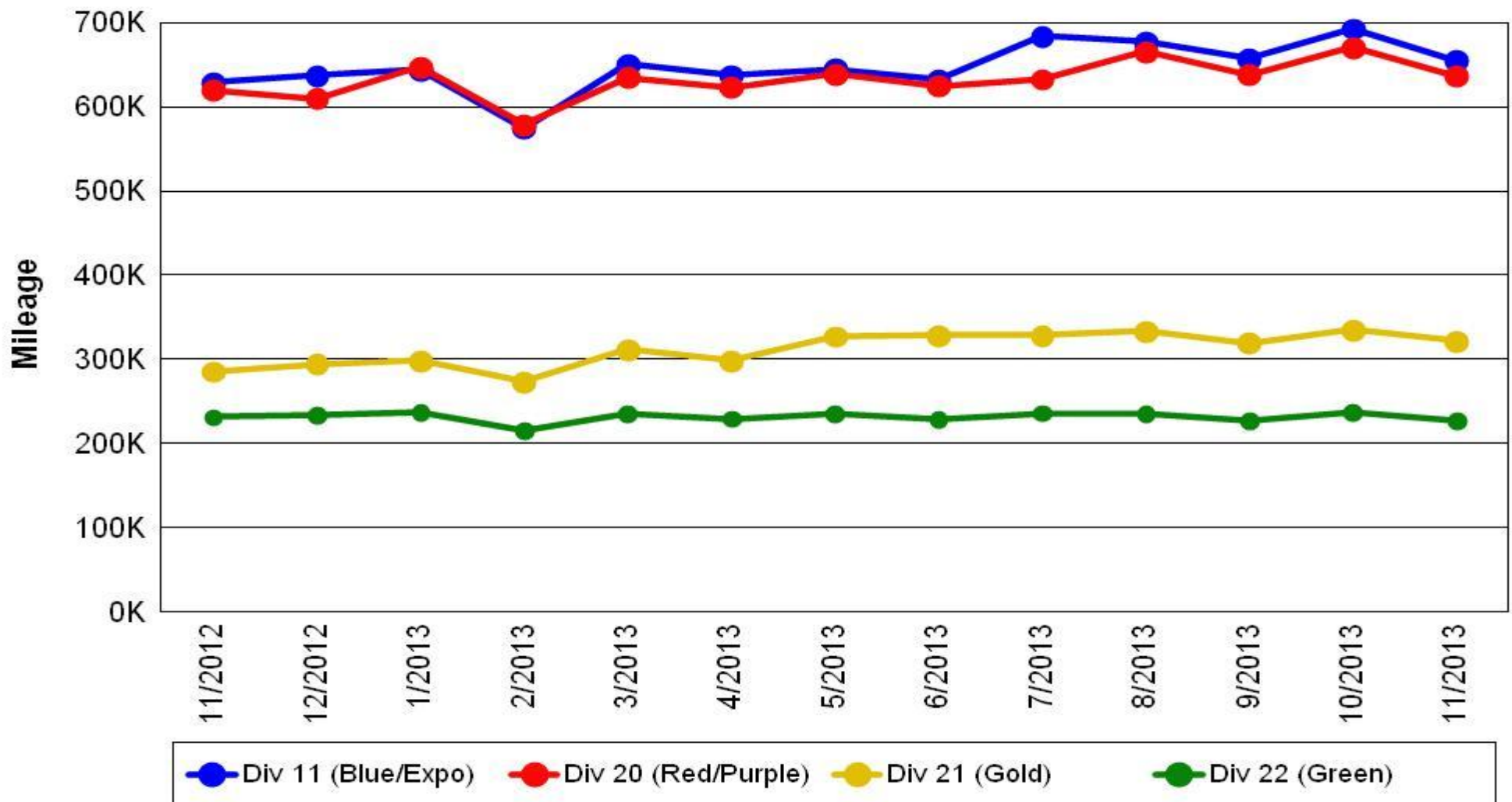


	Dec-12	Jan-13	Feb-13	Mar-13	Apr-13	May-13	Jun-13	Jul-13	Aug-13	Sep-13	Oct-13	Nov-13
All Rail	27,304	24,032	21,051	23,203	36,455	29,315	25,910	26,501	38,230	28,354	26,164	34,709
Goal	24,000	24,000	24,000	24,000	24,000	24,000	24,000	24,000	24,000	24,000	24,000	24,000

Mileage Between Data Range (by month)

November 2013

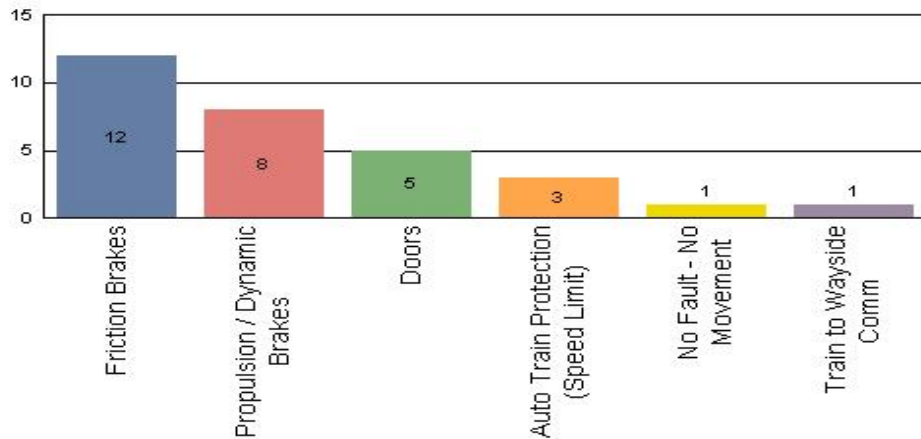
Rail Division Monthly Mileage



Major Incidents November 2013

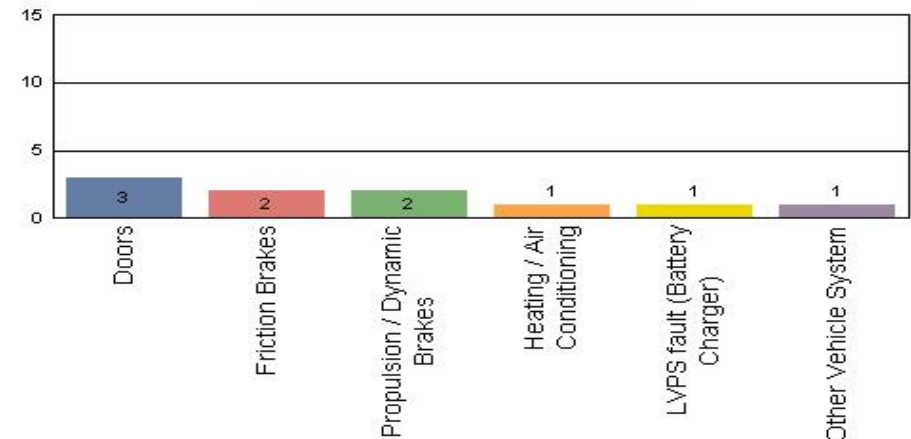
Metro Blue/Expo Line

Top Incident Categories



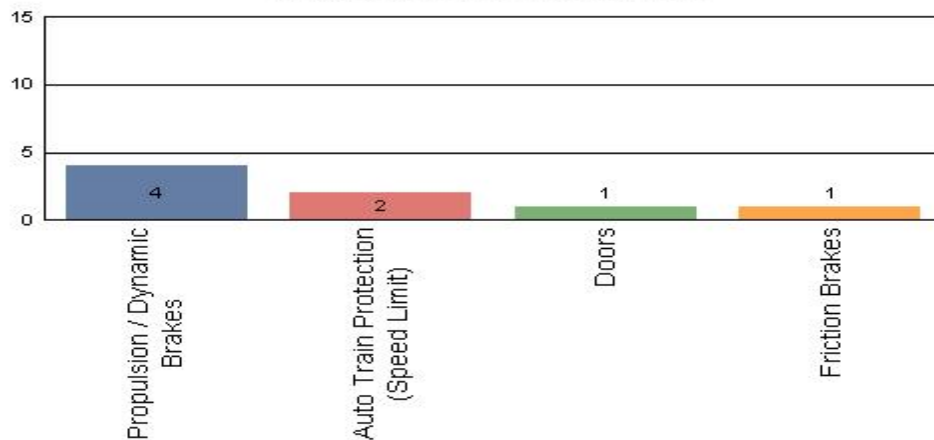
Metro Red/Purple Line

Top Incident Categories



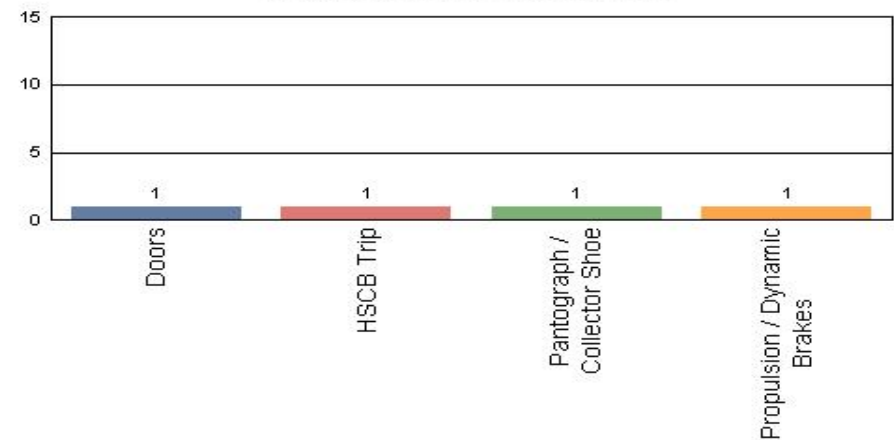
Metro Green Line

Top Incident Categories



Metro Gold Line

Top Incident Categories



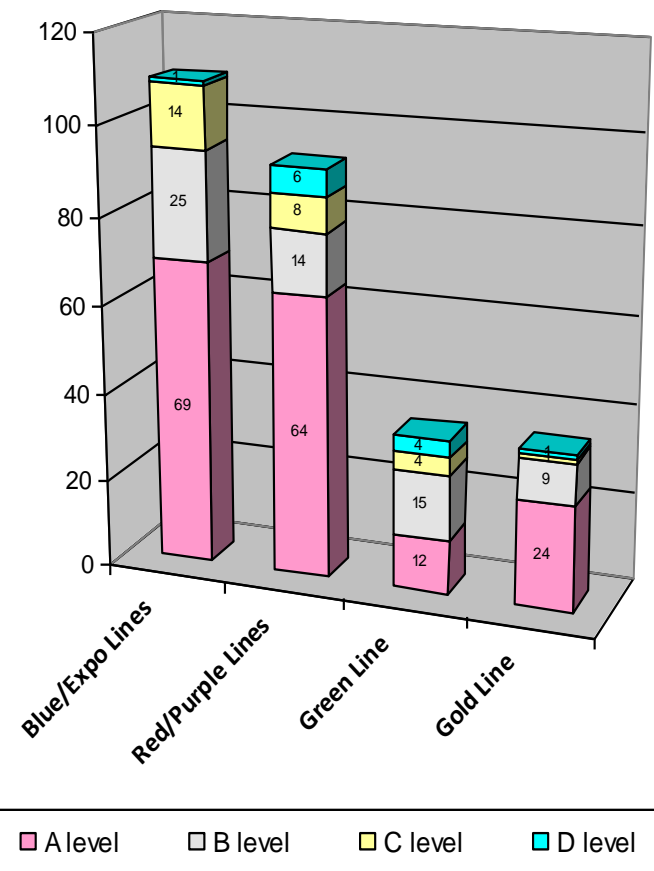
Preventive Maintenance Compliance

November 2013

PM Compliance	Dec-12	Jan-13	Feb-13	Mar-13	Apr-13	May-13	Jun-13	Jul-13	Aug-13	Sep-13	Oct-13	Nov-13
Blue/Expo Lines	100%	99%	100%	100%	100%	100%	100%	100%	100%	100%	100%	100%
Red/Purple Lines	100%	100%	100%	100%	100%	100%	100%	100%	100%	100%	100%	100%
Green Line	100%	100%	100%	100%	100%	91%	100%	100%	100%	100%	96%	92%
Gold Line	100%	100%	100%	100%	100%	100%	100%	100%	100%	100%	100%	100%

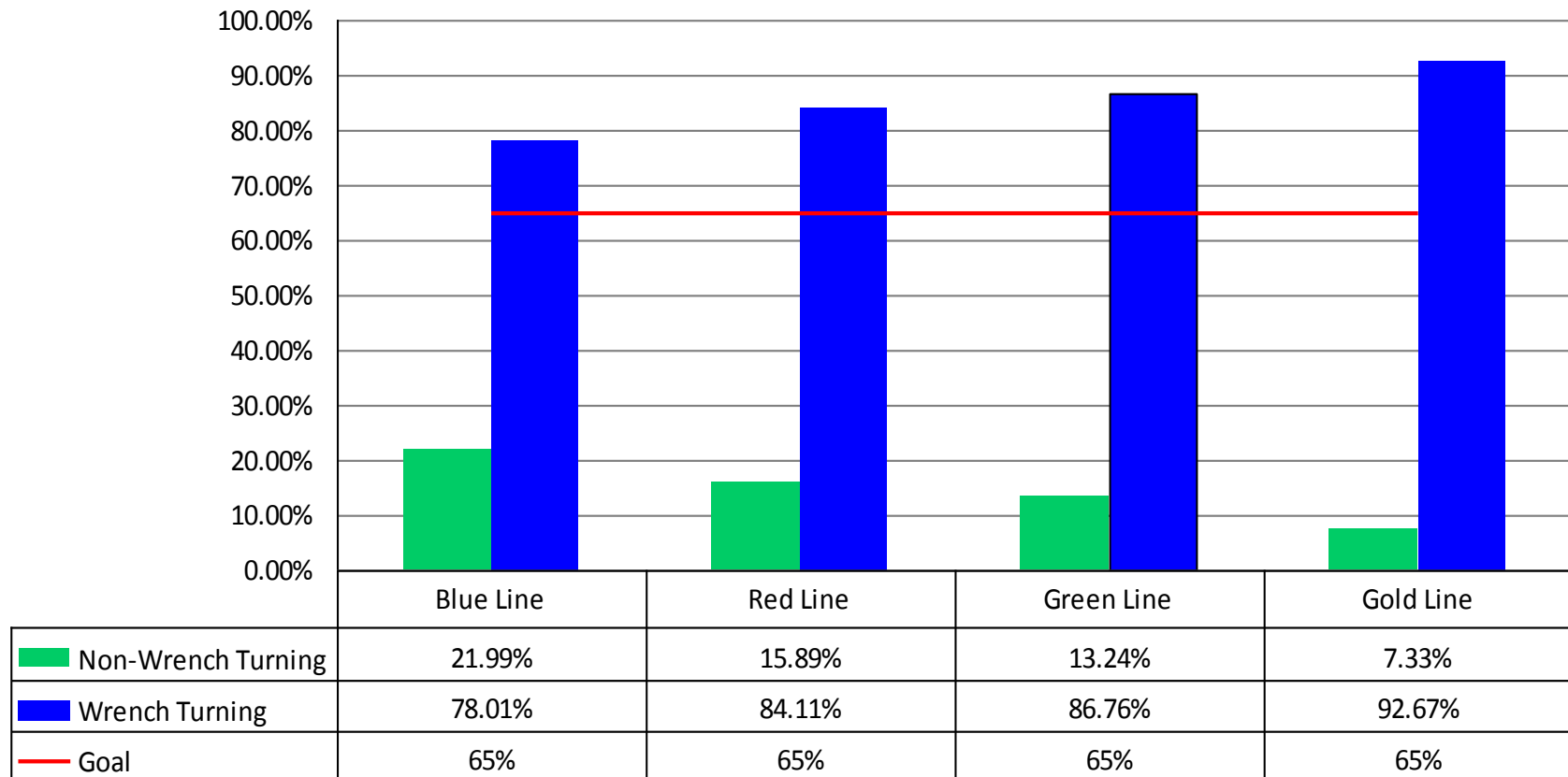
Number of Preventive Maintenance Inspections - November 2013					
Line	A level	B level	C level	D level	Totals
Blue/Expo Lines	69	25	14	1	109
Red/Purple Lines	64	14	8	6	92
Green Line	12	15	4	4	35
Gold Line	24	9	1	1	35
Totals:	169	63	27	12	271

Explanation of PM Inspection levels		Miles			
Line	Type	A level	B level	C level	D level
Blue/Expo Lines	P865/P2020	5,000	15,000	30,000	60,000
Blue/Expo Lines	P2000	7,500	22,500	45,000	90,000
Red/Purple Lines	A650	7,500	22,500	45,000	90,000
Green Line	P2000	7,500	22,500	45,000	90,000
Gold Line	P2550	10,000	30,000	60,000	120,000



RFS Wrench Turning November 2013

RFS - Wrench Turning November 2013

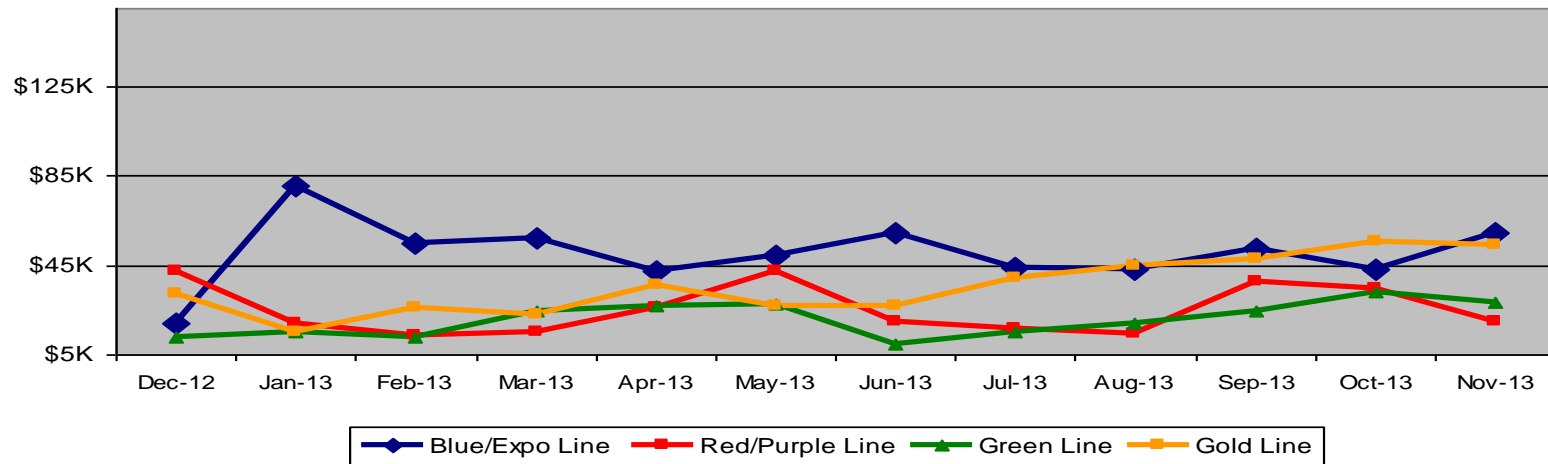


Vandalism & Graffiti Report

November 2013

Graffiti Costs

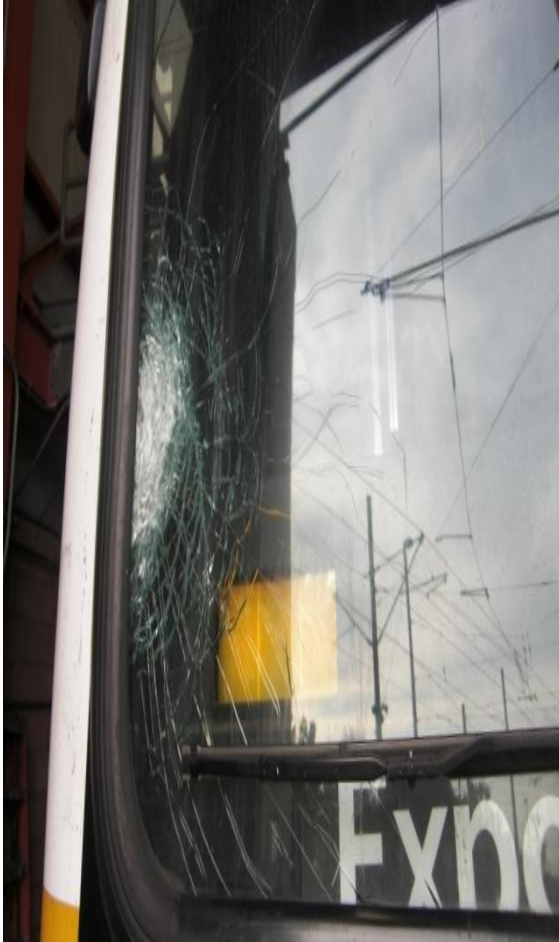
	Dec-12	Jan-13	Feb-13	Mar-13	Apr-13	May-13	Jun-13	Jul-13	Aug-13	Sep-13	Oct-13	Nov-13	12-Month Period
Blue/Expo Line	\$19K	\$81K	\$55K	\$57K	\$42K	\$49K	\$59K	\$44K	\$43K	\$53K	\$43K	\$60K	\$605K
Red/Purple Line	\$42K	\$19K	\$13K	\$15K	\$26K	\$42K	\$19K	\$16K	\$14K	\$37K	\$35K	\$20K	\$300K
Green Line	\$13K	\$15K	\$13K	\$24K	\$27K	\$28K	\$10K	\$15K	\$19K	\$24K	\$33K	\$28K	\$250K
Gold Line	\$32K	\$15K	\$26K	\$23K	\$36K	\$27K	\$27K	\$39K	\$44K	\$48K	\$56K	\$54K	\$427K
Totals:	\$106K	\$130K	\$108K	\$119K	\$131K	\$146K	\$116K	\$115K	\$121K	\$162K	\$167K	\$162K	\$1,582K



November 2013 Vandalism & Graffiti - All Rail				
	Qty	Labor	Materials	Totals
Windows replaced	182	\$19,152	\$26,624	\$45,776
Vandal Shields	809	\$24,739	\$11,512	\$36,251
Seats Cleaned	466	\$2,865	\$0	\$2,865
Seats Replaced	178	\$5,607	\$5,711	\$11,318
Graffiti removal - other	1,098	\$25,844	\$1,000	\$26,844
Repainting panels	465	\$33,705	\$4,955	\$38,660
Totals	3,198	\$111,912	\$49,802	\$161,714

Graffiti Pictures November 2013

Blue Line



Green Line



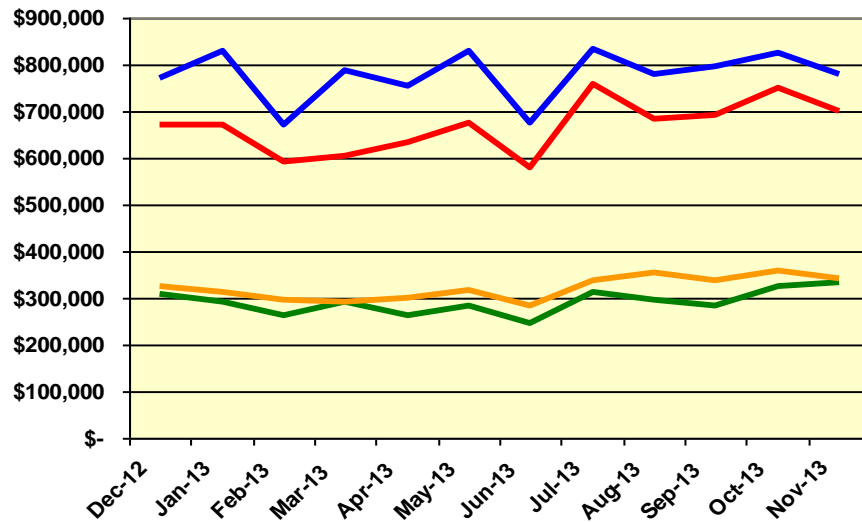
Gold Line



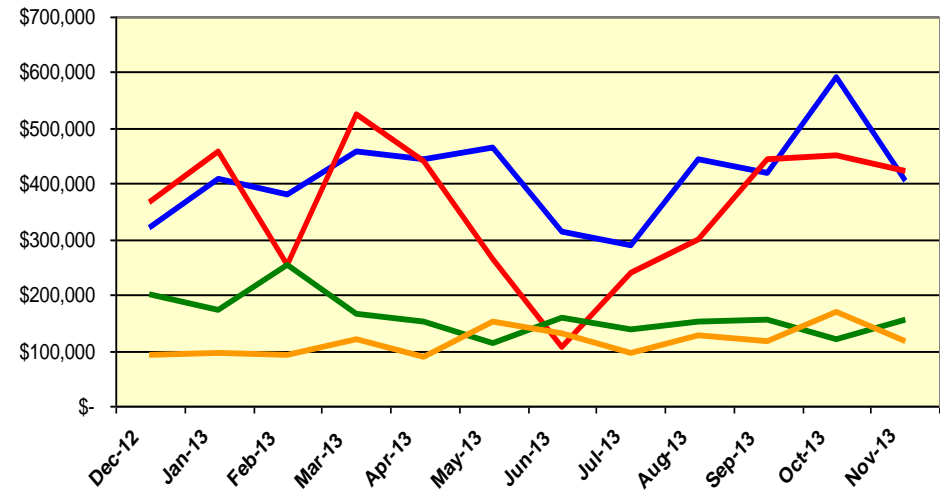
Labor and Material Costs

November 2013

Labor Costs



Material Costs



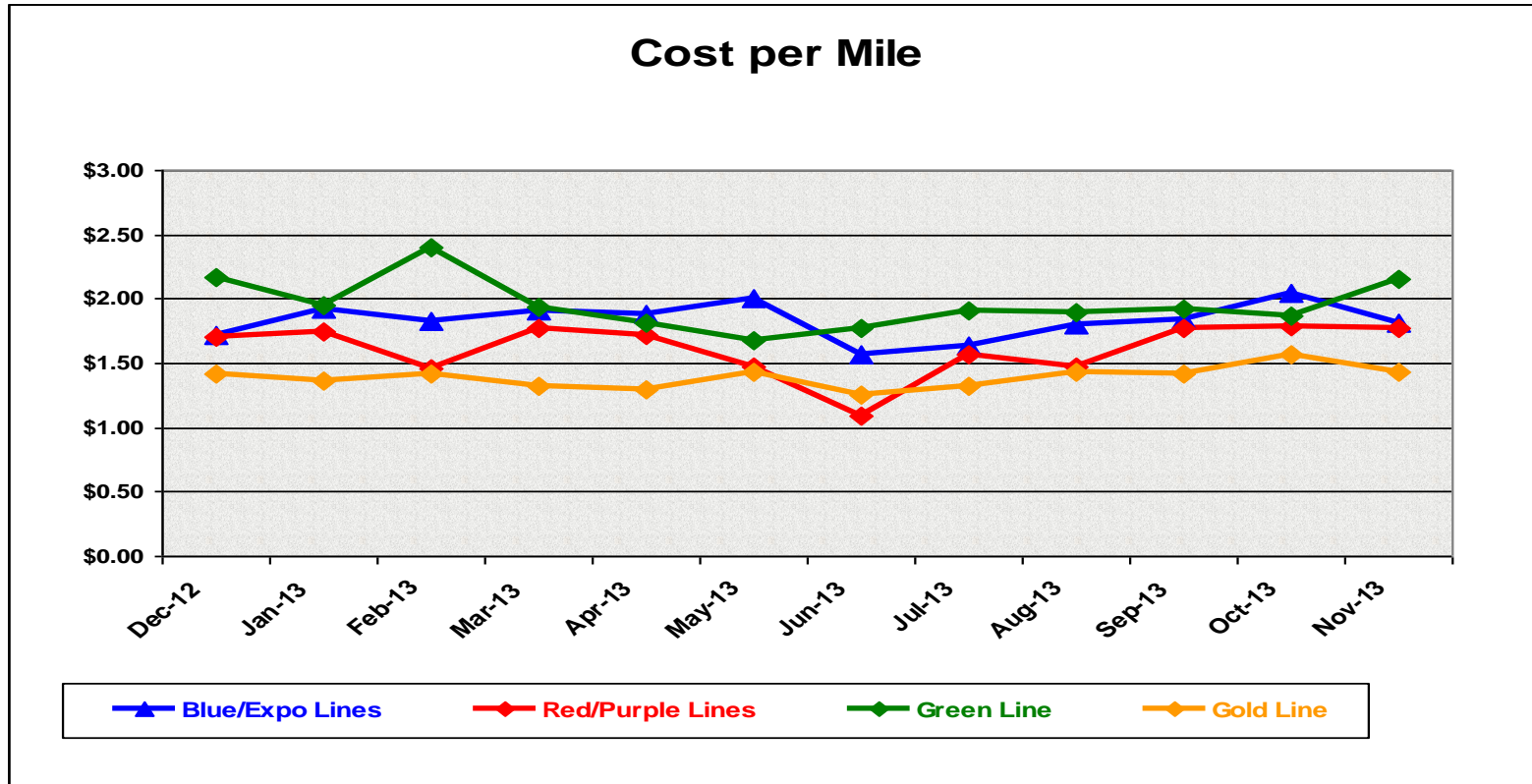
Dec-12	Jan-13	Feb-13	Mar-13	Apr-13	May-13	Jun-13	Jul-13	Aug-13	Sep-13	Oct-13	Nov-13
--------	--------	--------	--------	--------	--------	--------	--------	--------	--------	--------	--------

	LABOR COSTS											
Blue/Expo Lines	\$ 772,382	\$ 827,656	\$ 671,298	\$ 788,111	\$ 755,561	\$ 829,721	\$ 675,752	\$ 833,333	\$ 777,432	\$ 794,828	\$ 826,769	\$ 780,678
Red/Purple Lines	\$ 671,039	\$ 671,792	\$ 590,750	\$ 605,903	\$ 631,518	\$ 675,950	\$ 579,395	\$ 756,262	\$ 684,850	\$ 693,597	\$ 750,452	\$ 700,975
Green Line	\$ 306,761	\$ 290,453	\$ 261,863	\$ 289,639	\$ 263,955	\$ 282,841	\$ 247,129	\$ 312,740	\$ 295,374	\$ 284,105	\$ 323,749	\$ 332,737
Gold Line	\$ 326,736	\$ 311,060	\$ 297,422	\$ 292,452	\$ 298,759	\$ 317,387	\$ 282,541	\$ 338,719	\$ 352,473	\$ 336,795	\$ 357,408	\$ 343,700
Totals	\$ 2,076,918	\$ 2,100,961	\$ 1,821,333	\$ 1,976,105	\$ 1,949,793	\$ 2,105,899	\$ 1,784,817	\$ 2,241,054	\$ 2,110,129	\$ 2,109,325	\$ 2,258,378	\$ 2,158,090

	MATERIAL COSTS											
Blue/Expo Lines	\$ 320,127	\$ 407,585	\$ 379,796	\$ 457,700	\$ 444,569	\$ 463,311	\$ 311,415	\$ 288,894	\$ 442,803	\$ 419,133	\$ 589,324	\$ 406,032
Red/Purple Lines	\$ 365,489	\$ 458,038	\$ 254,026	\$ 522,856	\$ 440,708	\$ 263,158	\$ 105,805	\$ 238,207	\$ 298,670	\$ 441,927	\$ 449,033	\$ 422,849
Green Line	\$ 200,257	\$ 173,693	\$ 254,286	\$ 166,766	\$ 151,982	\$ 114,311	\$ 159,526	\$ 138,190	\$ 152,243	\$ 154,678	\$ 119,411	\$ 154,582
Gold Line	\$ 90,479	\$ 95,355	\$ 91,890	\$ 120,086	\$ 89,212	\$ 149,564	\$ 129,742	\$ 95,664	\$ 126,942	\$ 114,461	\$ 167,128	\$ 116,167
Totals	\$ 976,352	\$ 1,134,671	\$ 979,998	\$ 1,267,408	\$ 1,126,471	\$ 990,344	\$ 706,488	\$ 760,956	\$ 1,020,659	\$ 1,130,199	\$ 1,324,896	\$ 1,099,631

Cost Per Mile November 2013

Cost per mile:	Dec-12	Jan-13	Feb-13	Mar-13	Apr-13	May-13	Jun-13	Jul-13	Aug-13	Sep-13	Oct-13	Nov-13
Blue/Expo Lines	\$1.72	\$1.92	\$1.83	\$1.92	\$1.88	\$2.01	\$1.56	\$1.64	\$1.80	\$1.85	\$2.04	\$1.81
Red/Purple Lines	\$1.70	\$1.75	\$1.46	\$1.78	\$1.72	\$1.47	\$1.10	\$1.57	\$1.48	\$1.78	\$1.79	\$1.77
Green Line	\$2.17	\$1.96	\$2.40	\$1.94	\$1.81	\$1.68	\$1.78	\$1.91	\$1.90	\$1.93	\$1.86	\$2.15
Gold Line	\$1.42	\$1.36	\$1.42	\$1.32	\$1.30	\$1.43	\$1.25	\$1.32	\$1.44	\$1.41	\$1.57	\$1.43



ATU Absences vs. Overtime

November 2013

ABSENCE TYPE and HOURS	3940 Admin.	3941 Blue	3942 Red	3943 Green	3944 Gold	3947 Expo	Total
BER-BEREAVEMENT	24	16	72	48	16	-	176
CTO-COMPENSATORY TIME OFF	8	325	328	59	128	2	850
CUT-EMPLOYEE LEAVES EARLY	-	1	-	1	-	-	2
CVA - CASUAL VACATION	-	122	332	66	240	-	760
DSL-DISABILITY LEAVE/LONG	-	432	240	-	-	-	672
EFH-EMG. FLOAT HOL.	-	8	72	8	8	-	96
ETO-EXCUSED TIME OFF	2	68	63	20	52	1	205
FMI-FAM IND INJURY	-	-	-	-	32	-	32
FML-FAMILY CARE LEAVE	-	191	100	351	72	-	714
FMS-FAMILY LEAVE SICK	-	48	80	15	32	-	176
HLF-HOLIDAY FLOATING	24	352	328	88	184	48	1,024
HNP-HOLIDAY NOT PAID	-	-	-	-	8	-	8
HOL-HOLIDAY LEGAL	72	544	592	128	168	32	1,536
II-INDUSTRIAL INJURY	-	-	8	-	-	-	8
IPD-INJURED PARTIAL DAY	-	-	8	-	-	-	8
JUR-JURY DUTY	-	24	16	-	24	-	64
LC1-LABOR CODE 233	8	144	117	48	-	-	317
LTI-OCCPIL/LONGTRM INJ LEAVE	-	-	-	168	96	-	264
MLN-MILITARY ABSENCE-UNPAID	-	24	-	-	-	-	24
OWP-OFF WITH PERMISSION	-	-	8	-	-	-	8
RTO-REQUESTED TIME OFF-NO PAY	-	24	-	-	-	-	24
SCK-SICK PAY	-	256	88	64	88	-	496
SCW-SICK WITHOUT PAY	-	224	16	56	28	-	324
SPN-SCHOOL PARTNER NOT PAID	-	-	-	-	8	-	8
SUS-DISCIPLINARY SUSPENSION	-	8	-	32	-	-	40
TAR-TARDY	-	2	1	1	2	0	7
UNP-UNION BUS PAID	-	-	-	8	-	-	8
VAC-VACATION	64	820	652	486	293	16	2,330
Total Absence Hours	202	3,633	3,121	1,646	1,478	99	10,180
ATU Number of Work Force (assigned)	9	120	111	47	48	5	340
Full Work Force hours/month	1,560	20,796	19,236	8,145	8,318	867	58,922
Absence as a % of Work Force	13%	17%	16%	20%	18%	11%	17%

OVERTIME TYPE and HOURS	3940 Admin.	3941 Blue	3942 Red	3943 Green	3944 Gold	3947 Expo	Total
CTB-COMPENSATORY TIME TO BANK	12	141	219	46	88	-	505
OTP-PREM OVERTIME	650	5,741	5,714	2,421	1,922	271	16,720
WLO-Worked Lunch Overtime	85	166	174	143	96	10	673
Total Overtime Hours	747	6,048	6,106	2,609	2,106	281	17,898
Overtime as a % of Work Force	48%	29%	32%	32%	25%	32%	30%
FTE Calculation - Absence & OT Hours	3940	3941	3942	3943	3944	3947	Total
Absences FTE	1	21	18	9	9	1	59
OTP FTE	4	35	35	15	12	2	103
FTE Difference	-3	-14	-17	-6	-3	-1	-44



Metro

Note: Overtime also covers other required activities.

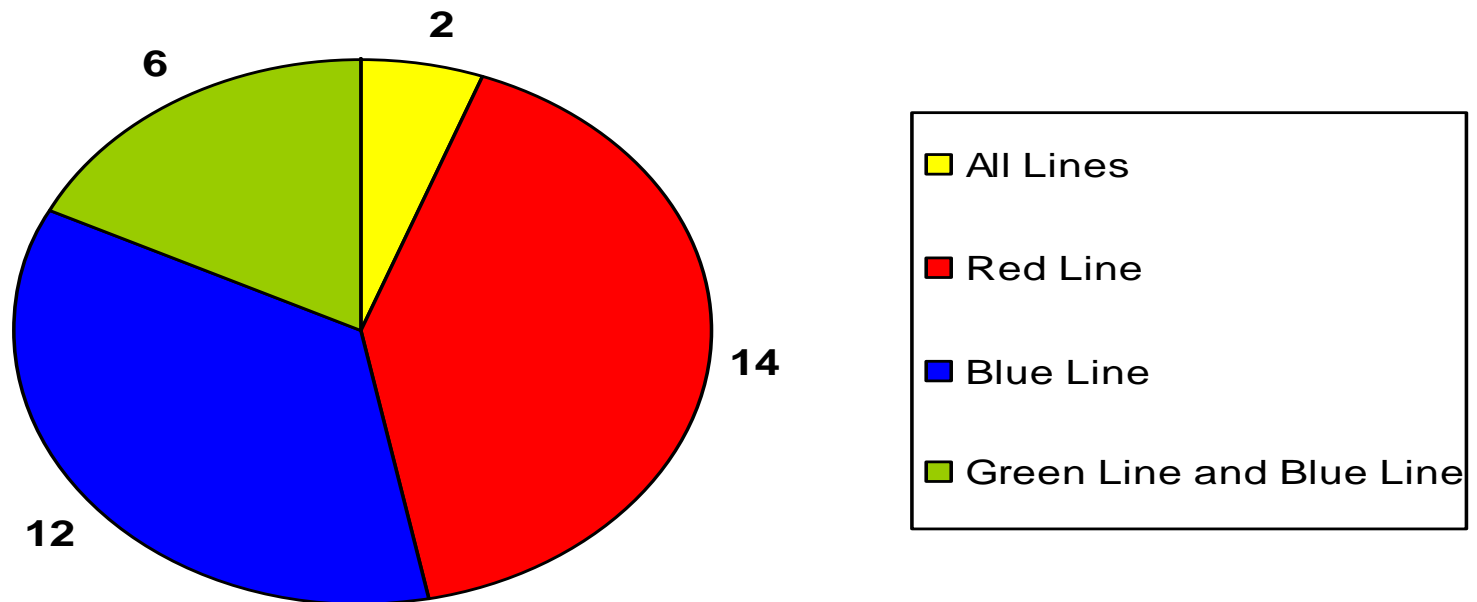
Rail Vehicle Engineering Project Summary

November 2013

Engineering Technical Specifications

100% Completion - Total of 34

November 2013

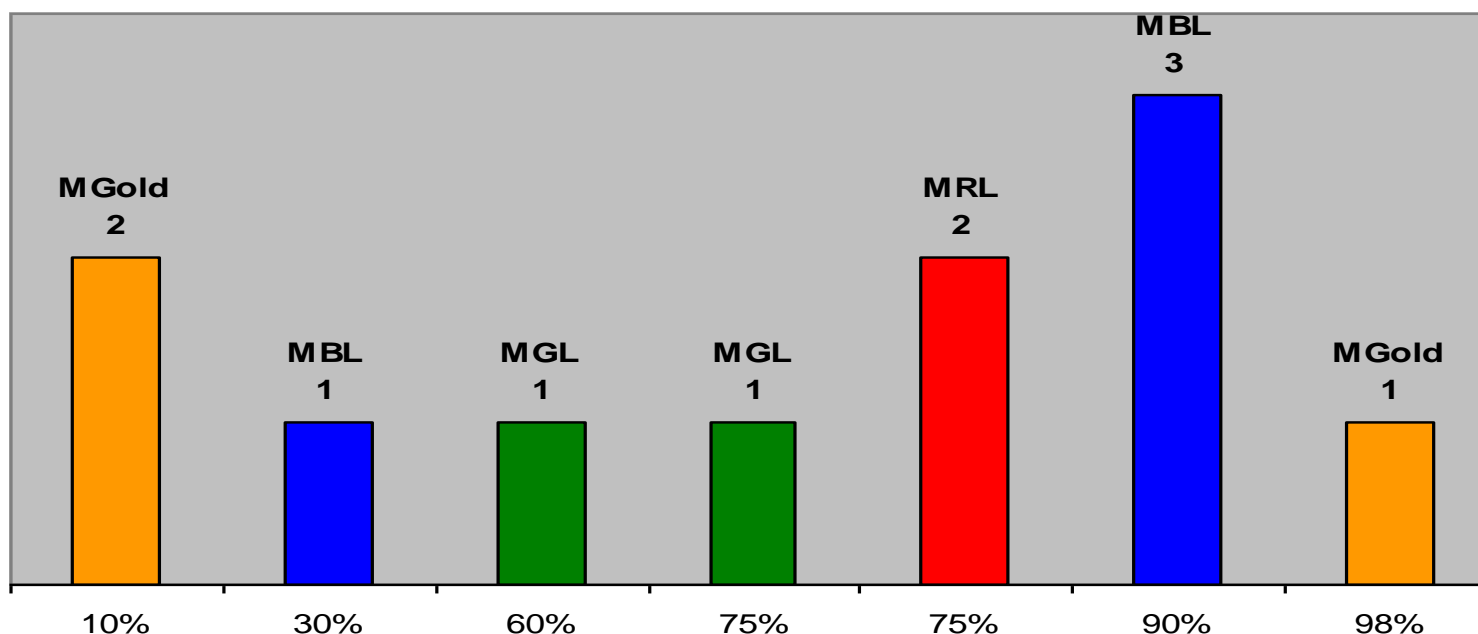


Details of specifications are available upon request.

Rail Vehicle Engineering Project Summary (cont'd)

November 2013

Engineering Technical Specifications Less than 100% Completion - Total of 11 November 2013

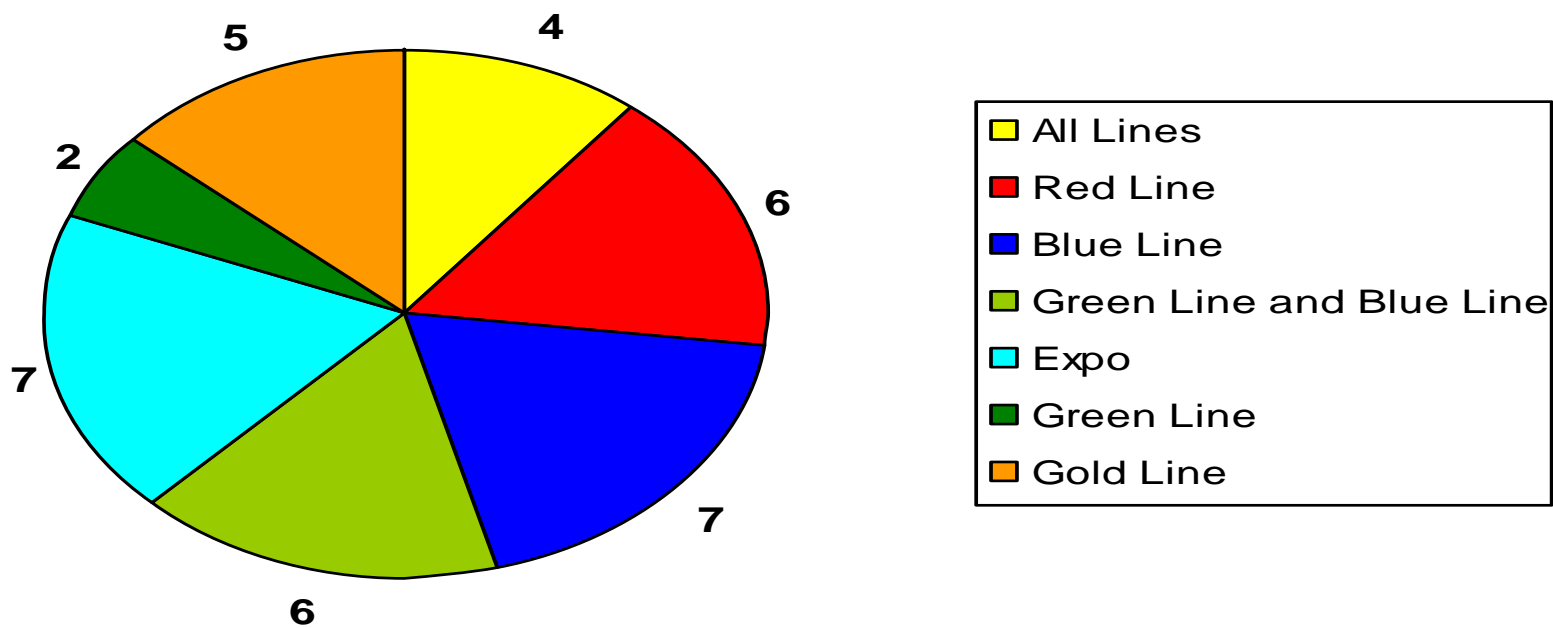


Details of specifications are available upon request.

Rail Vehicle Engineering Project Summary (cont'd)

November 2013

Engineering Projects 100% Completion - Total of 37 November 2013



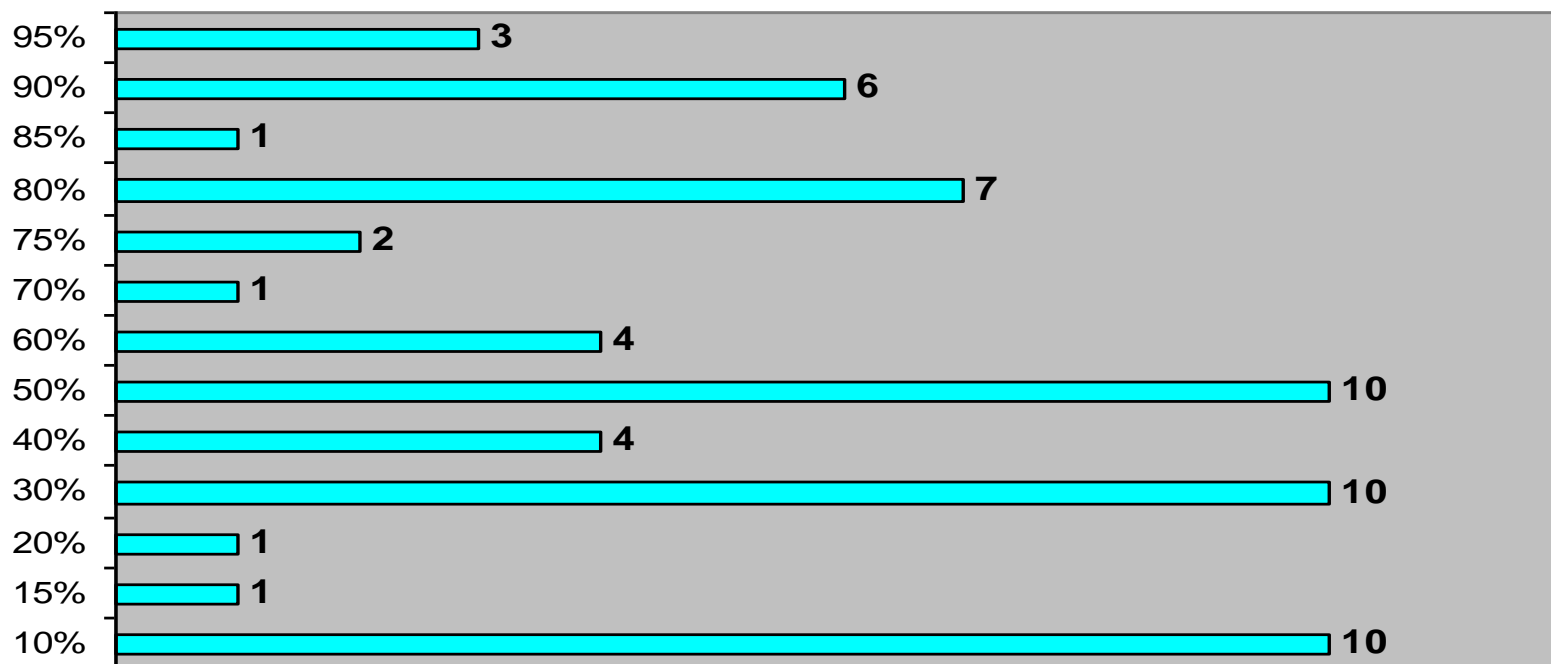
Details of projects are available upon request.

Rail Vehicle Engineering Project Summary (cont'd)

November 2013

Engineering Projects

Less than 100% Completion - Total of 60 - All Lines
November 2013



Details of projects are available upon request.

QA-Warranty Activities

November 2013

- QA PMI Audits, Spot Checks, Unannounced Audits performed (24)
- On-Going, P2550 parts tracking: Contract Spares, Capital Spares, Metro Loaned Parts status to ABI
- On-Going, Division Warranty Parts Claims Processing
- P2550 Traction Motor Junction Box Overheated lugs repairs in progress
- P2550 (Lamellar Seal) Truck Resilient Pin Bushing fleet failure declared (Action pending ABI)
- P2550 34 of 50 Cars have new profile connection beam installed with original resilient pins and bushings
- A650 Base Buy & Option Car Fleet Warranty Truck Frame Mod Campaign (143 of 216 Trucks modified to date). MRL Warranty Cost Avoidance savings accrued to date \$2.15 million.
- SmartDrive test installation in progress MBL
- MBL journal bearing replacement program in progress
- On-Going Warranty-QA interest oversight & tracking: Overhauls / Mod Programs, (A650/P2000/P2020/865/P2550) Propulsion System, Master Controllers, Capacitor Banks, Air Compressors, Aux Power, Couplers, Gearboxes, Articulation Diaphragms, Friction Brakes, HPT's, Brake Resistor Grids, T/M's, MA's, HVAC, Doors, A/C Motors – (Blowers & Evaporators)

RFS Instruction Department Activities

November 2013

Training classes completed during the month of November 2013

Description	Course Hours	Student Count	Training Hours
Blue & Expo Line Training - (P865/2020 & P2000 LRV):			
RFS PROTRAN1 TRAINING	1	36	36
WAYSIDE WORKER PROTECTION	4	25	100
HAZARD COMMUNICATION FOR EMPLOYEES	2	12	24
RFS 865/2020 PROPULSION	96	7	672
Total Blue Line Training (Hours):			832
Red Line Training (Breda A650 HRV):			
RFS PROTRAN1 TRAINING	1	63	63
WAYSIDE WORKER PROTECTION	4	59	236
DRUG AND ALCOHOL (SAFETY SENSITIVE)	2	1	2
RFS BRED A 650 TRANSRAIL LVPS	8	8	64
RFS BRED A 650 PROPULSION GE	40	8	320
RFS BRED A 650 MTO SYSTEMS	24	8	192
RFS BRED A 650 VEHICLE INTRO	8	8	64
Total Red Line Training (Hours):			941
Green Line Training (P2000 LRVs):			
RFS PROTRAN1 TRAINING	1	1	1
WAYSIDE WORKER PROTECTION	4	3	12
Total Green Line Training (Hours):			13
Gold Line Training (P2550 LRVs):			
RFS PROTRAN1 TRAINING	1	20	20
WAYSIDE WORKER PROTECTION	4	18	72
Total Gold Line Training (Hours):			92
Total RFS Instruction for the month of November 2013 (Hours):			937

Other Instruction Activities

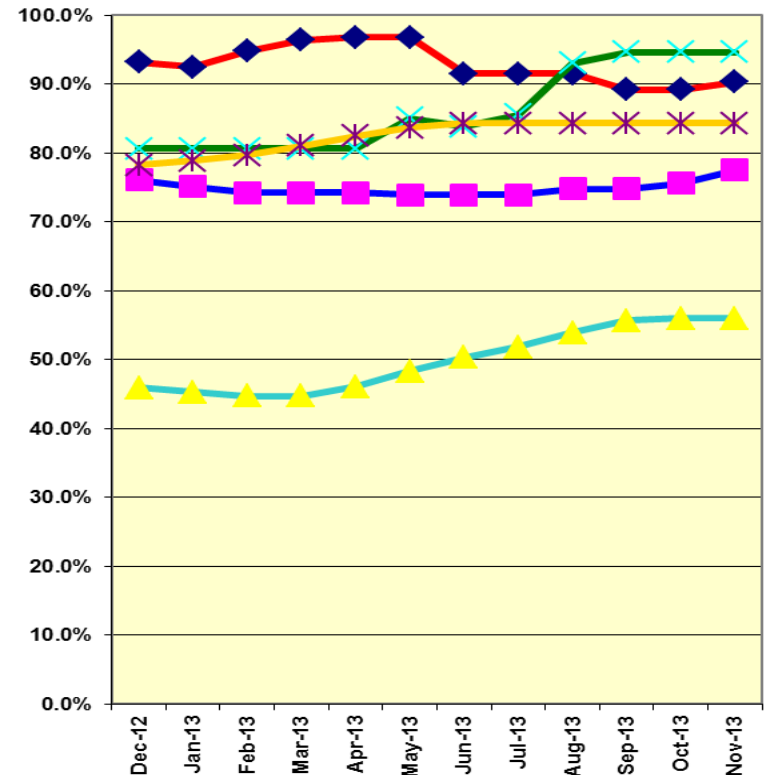
Instructor Vacation & Holidays	104
P865/P2020 Vehicle Course Preparation	40
A650 Vehicle Course Preparation	32
WWPPreparation	8
ProTran1 Preparation	8
Total Other Instruction Activities	192.0

Core Vehicle Training Completed: **BLUE** **RED** **GREEN** **GOLD**

Percentage of core vehicle training complete: **77.5%** **90.3%** **94.6%** **84.3%**
 Siemens P2000 training complete: 56.0% N/A N/A N/A

Average Specialist Rail Experience Level in Years: **11.5** **9.8** **9.6** **10.3**

Core Training Completed



Variations caused by new hires, employee transfers, & training completed