



Rail Fleet Services Monthly Report August 2014



Metro

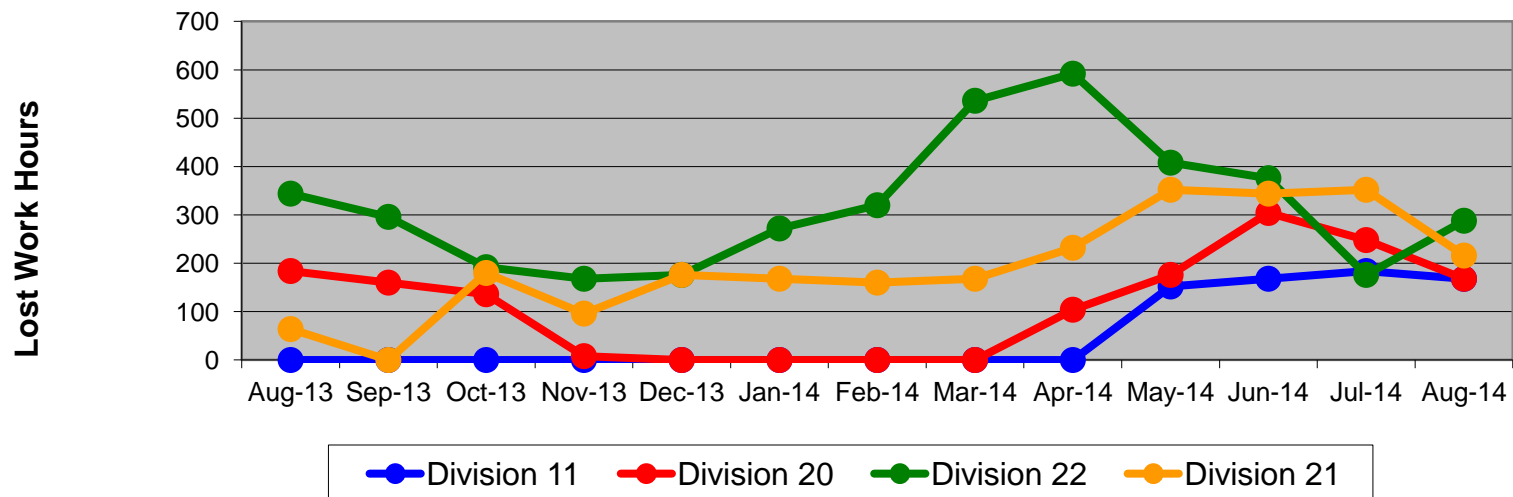
Table of Contents

•	Safety		
	- Industrial Injuries	Page	3
	- Rail Vehicle Accidents & Major Incidents	Page	4
•	Customer Service		
	- Service Delivery – AM/PM Pull-Outs	Page	5
	- Vehicle Utilization – Blue Line & Green Line	Page	6
	- Vehicle Utilization – Red Line & Gold Line	Page	7
	- All Train Delay Incidents	Page	8
	- Mean Miles Between Failures (Major)	Page	9
	- Mileage Between Data Range (by month)	Page	10
•	Business Processes		
	- Top Incident Categories	Page	11
	- Major Incidents	Page	12
	- Preventive Maintenance Compliance	Page	13
	- RFS Wrench Turning	Page	14
•	Finance		
	- Vandalism & Graffiti Costs	Page	15
	- Graffiti Pictures	Page	16
	- Labor & Material Costs	Page	17
	- Cost per mile	Page	18
	- Absence vs. Overtime	Page	19
•	Growth		
	- RFS Instruction Department Activities	Page	20

Industrial Injuries – Lost Work Hours August 2014

	Aug-13	Sep-13	Oct-13	Nov-13	Dec-13	Jan-14	Feb-14	Mar-14	Apr-14	May-14	Jun-14	Jul-14	Aug-14	13-Month Period
Division 11	0	0	0	0	0	0	0	0	0	152	168	184	168	672
Division 20	184	160	136	8	0	0	0	0	104	176	304	248	168	1,488
Division 22	344	296	192	168	176	272	320	536	592	408	376	176	288	4,144
Division 21	64	0	180	96	176	168	160	168	232	352	344	352	216	2,508
Totals	592	456	508	272	352	440	480	704	928	1,088	1,192	960	840	8,812

Industrial Injuries (lost work hours)



Rail Vehicle Accidents & Major Incidents

August 2014

Repair Costs	Aug-13	Sep-13	Oct-13	Nov-13	Dec-13	Jan-14	Feb-14	Mar-14	Apr-14	May-14	Jun-14	Jul-14	Aug-14	13-Month Period
Blue/Expo Line	\$2,338	\$3,700	\$11,475	\$13,838	\$0	\$8,370	\$15,618	\$13,690	\$72,961	\$9,463	\$9,964	\$1,528	\$207	\$163,152
Red/Purple Line	\$1,358	\$0	\$0	\$0	\$0	\$0	\$0	\$356	\$0	\$0	\$0	\$0	\$0	\$1,714
Green Line	\$0	\$0	\$0	\$0	\$1,008	\$0	\$0	\$0	\$0	\$0	\$0	\$0	\$0	\$1,008
Gold Line	\$537	\$0	\$0	\$0	\$0	\$0	\$0	\$714	\$0	\$0	\$5,860	\$50,059	\$1,669	\$58,839
Totals	\$4,233	\$3,700	\$11,475	\$13,838	\$1,008	\$8,370	\$15,618	\$14,760	\$72,961	\$9,463	\$15,824	\$51,587	\$1,876	\$224,713

Rail Vehicle Accident Costs - August 2014				
Date	Incident #	Problem Code	Incident Description	Repair Cost
Metro Blue/Expo Line				
8/15/14	2494477	Train vs. Pedestrian	A 10-72 was reported at Del Amo Station.	\$ 207
			Total	\$ 207
Metro Gold Line				
8/25/14	2498618	Train vs. Vehicle	A 10-73 was reported at Civic Center Drive, Track # 1 Northbound.	\$ 1,669
			Total	\$ 1,669
			Grand Total	\$ 1,876
(10-71) = Train vs. Object, (10-72) = Train vs. Pedestrian, (10-73) = Train vs. Vehicle (10-74) = Train vs. MTA Vehicle, (10-75) = Derailment				

Note: Repair costs are only the expenses captured during the time period of the report. Actual costs may be significantly higher, if repairs are spread out over several months.

Service Delivery August 2014

August 2014 - Service Delivery

Blue/Expo Line Fleet Size: 92

<u>Pull Out</u>	<u>Vehicles Required</u>	<u>Average Available</u>	<u>% Up (Down)</u>
Weekday:	78	78	100%
Weekend:	60	64	107%
Late Pullouts: 0*			
Monthly Mileage:	657,920		

Red/Purple Line Fleet Size: 104

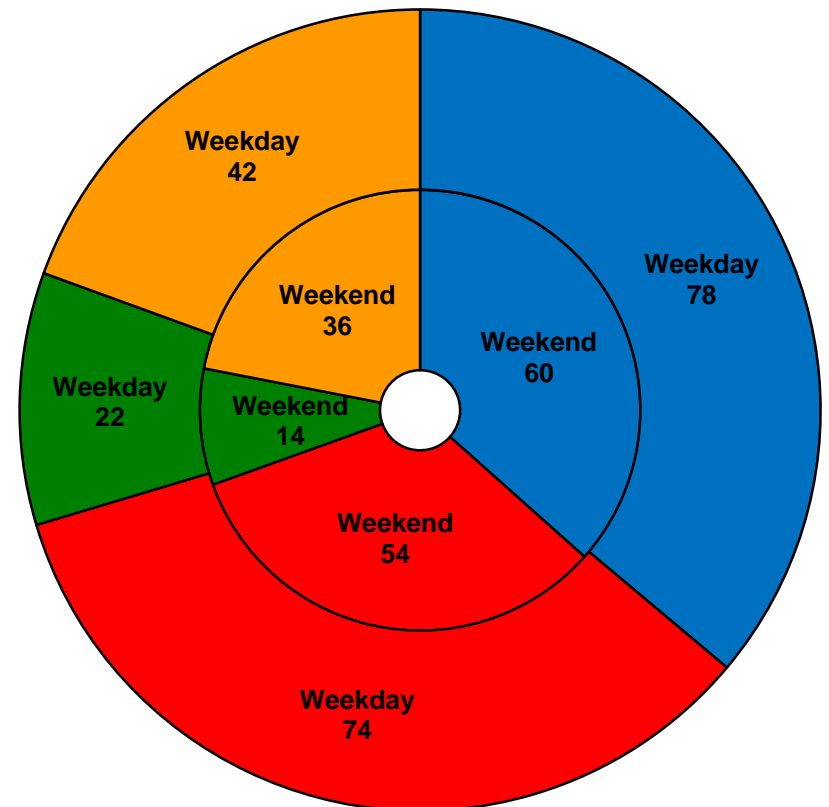
<u>Pull Out</u>	<u>Vehicles Required</u>	<u>Average Available</u>	<u>% Up (Down)</u>
Weekday:	74	81	109%
Weekend:	54	72	133%
Late Pullouts: 0*			
Monthly Mileage:	648,038		

Green Line Fleet Size: 29

<u>Pull Out</u>	<u>Vehicles Required</u>	<u>Average Available</u>	<u>% Up (Down)</u>
Weekday:	22	22	100%
Weekend:	14	16	114%
Late Pullouts: 0*			
Monthly Mileage:	232,695		

Gold Line Fleet Size: 50

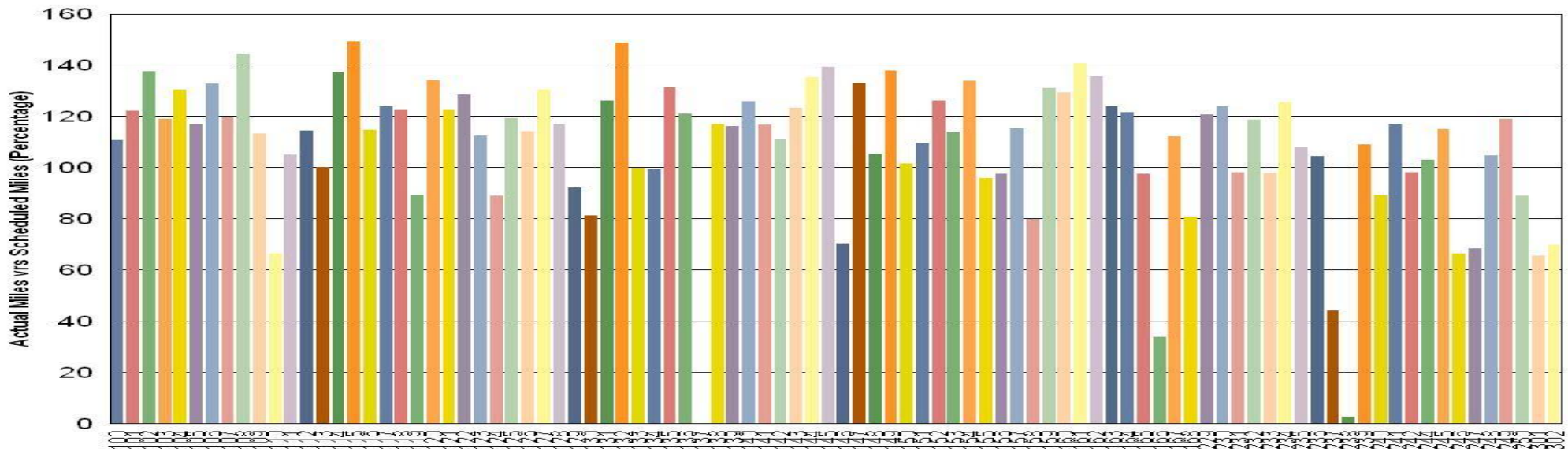
<u>Pull Out</u>	<u>Vehicles Required</u>	<u>Average Available</u>	<u>% Up (Down)</u>
Weekday:	42	43	102%
Weekend:	36	40	111%
Late Pullouts: 0*			
Monthly Mileage:	344,122		



■ Blue/Expo Line ■ Red/Purple Line ■ Green Line ■ Gold Line

Vehicle Utilization August 2014

Metro Blue/Expo Line



Blue/Expo Line:

Car # 137 Out of service due to major accident repair.

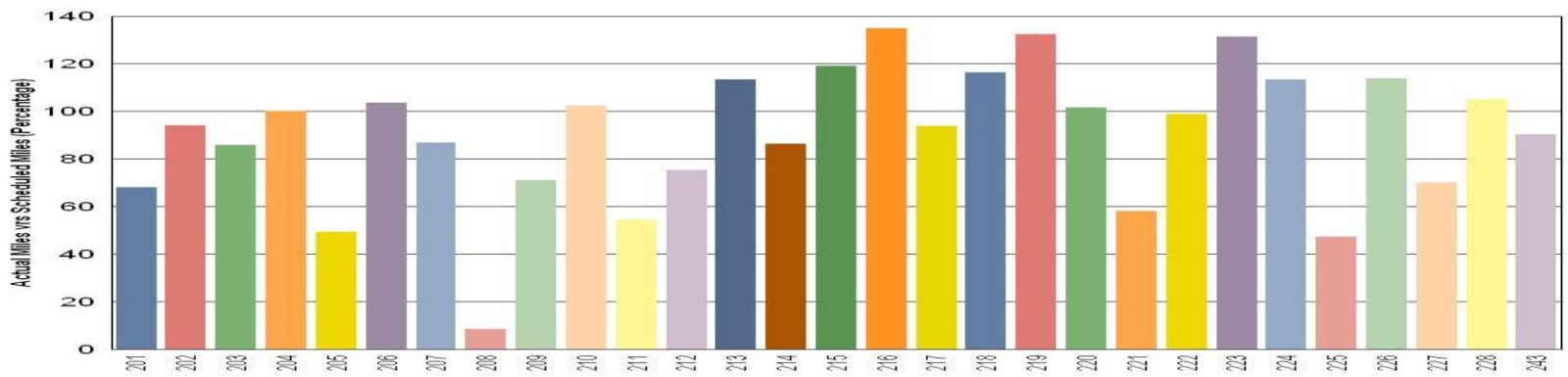
Car # 166 Out of service for preventive maintenance, truck work and paint/body work.

Car # 238 Out of service for troubleshooting and repair due to repeat friction brake failure.

Metro Green Line

Green Line:

Car # 208 On hold for propulsion fault.



Note: Percentage includes an average 4% mileage deduction for yard mileage and vehicle testing.



Vehicle Utilization August 2014

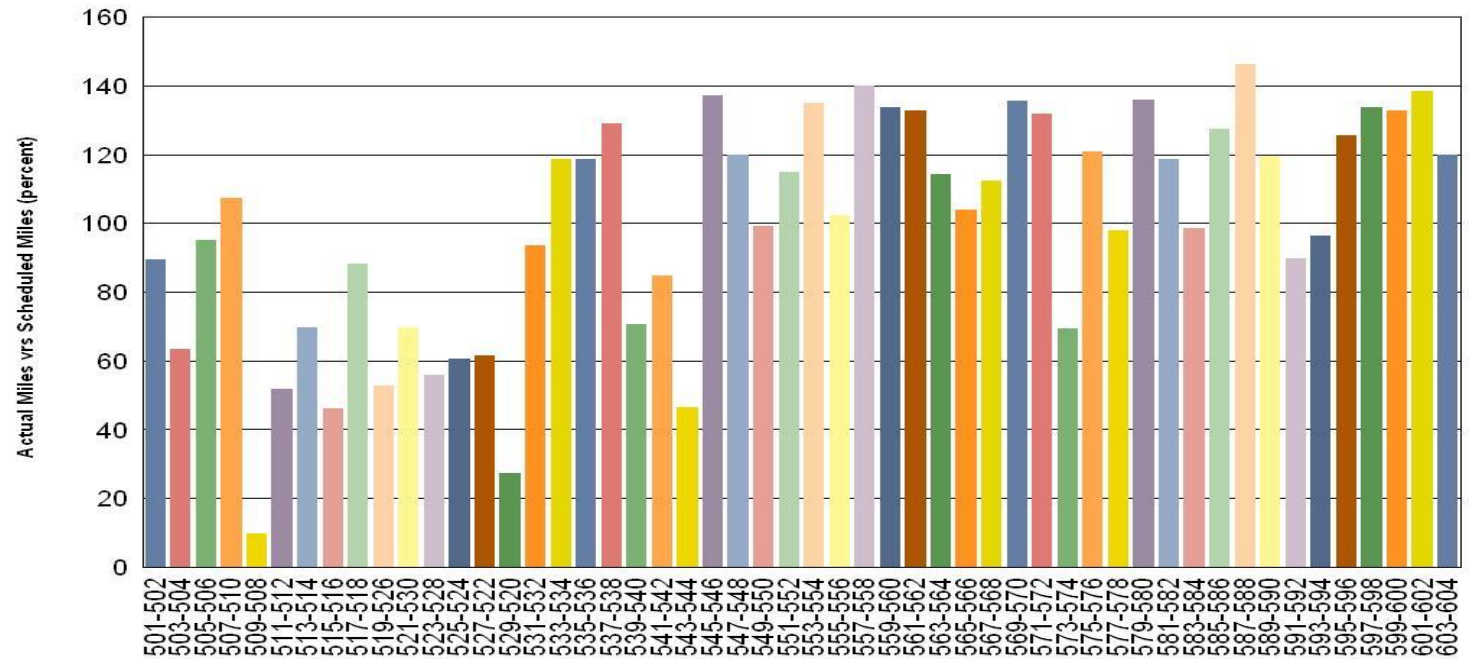
Red/Purple Line:

The following cars were out of service due to:

Car # 509-508 Truck motor mount welding project

Car # 529-520 Floor project

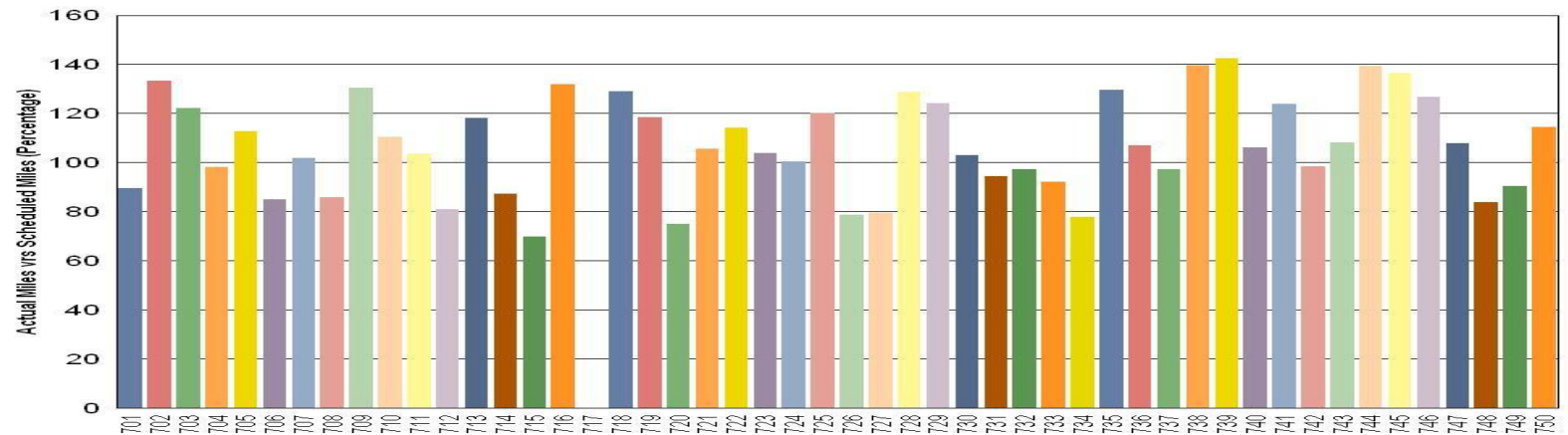
Metro Red/Purple Line



Gold Line:

Car # 717 Out of service for replacement of burnt wiring.

Metro Gold Line

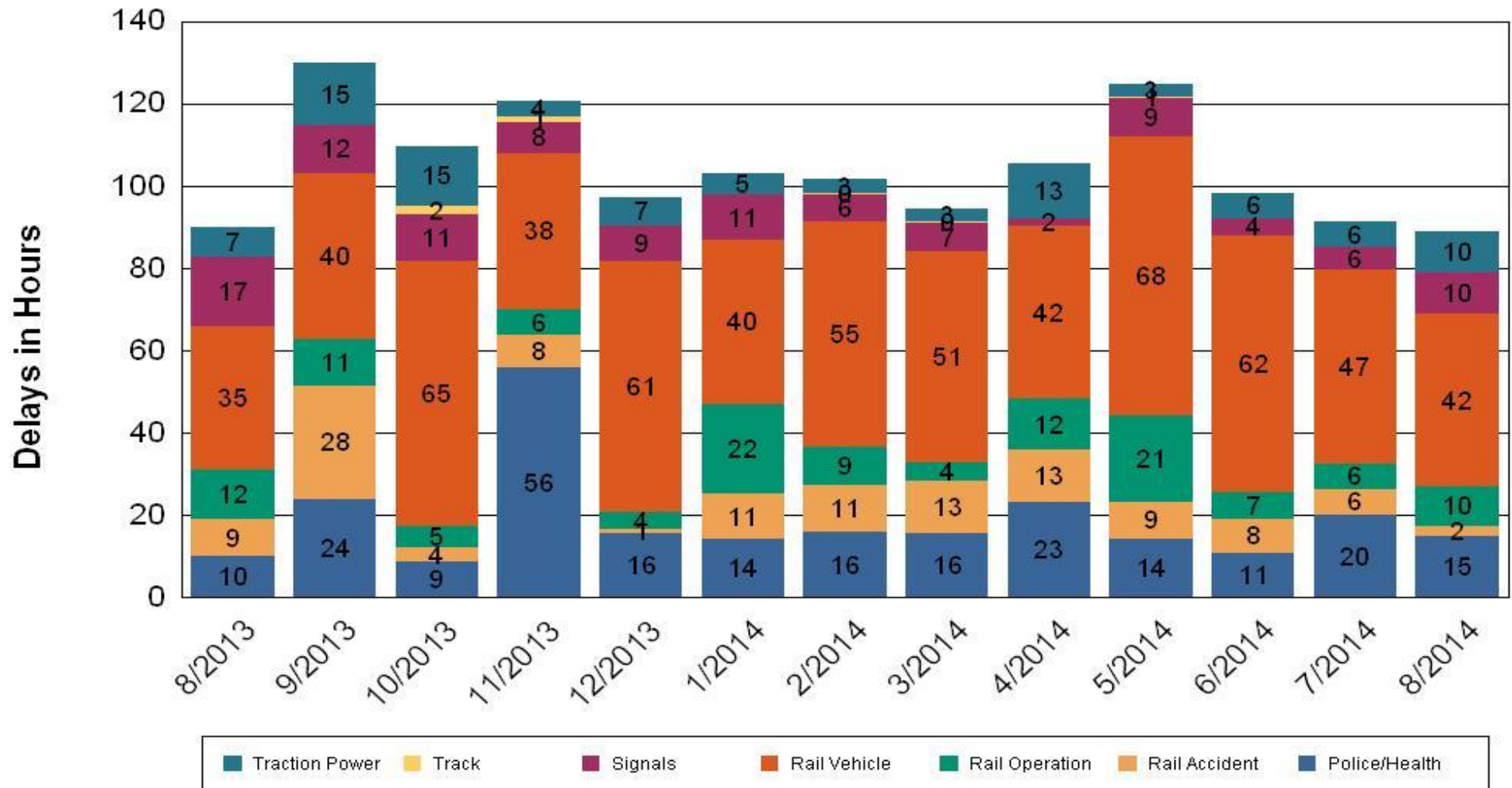


•Percentage includes an average 4% mileage deduction for yard mileage and vehicle testing.

All Train Delay (Hours) August 2014

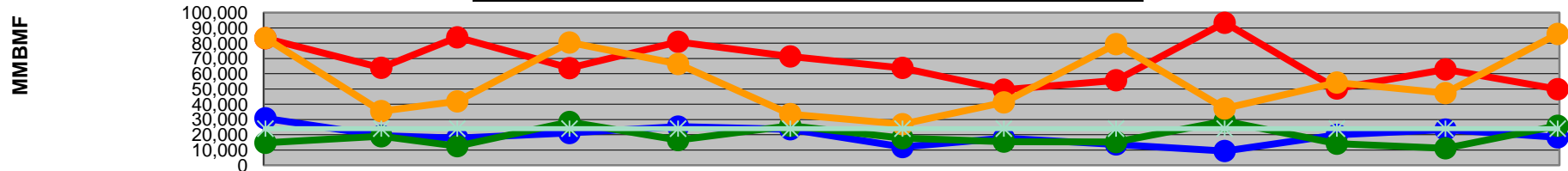
All Train Delays

Totals Include the delay to all trains involved (not just the primary incident)



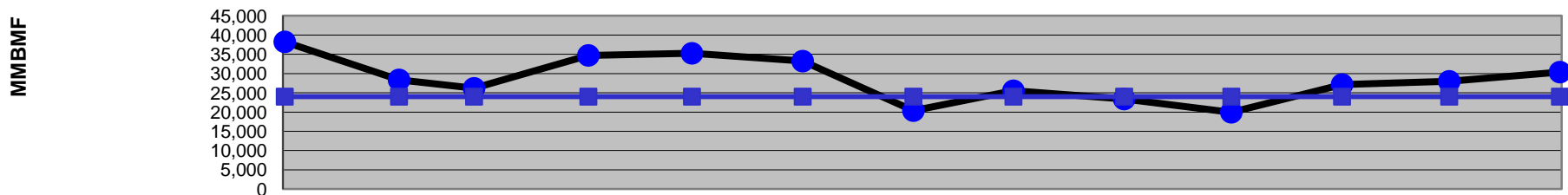
Mean Miles Between Failures (Major) Year to Date – August 2014

Mean Miles Between Major Failures (by line)



	Aug-13	Sep-13	Oct-13	Nov-13	Dec-13	Jan-14	Feb-14	Mar-14	Apr-14	May-14	Jun-14	Jul-14	Aug-14
Blue/Expo Lines	30,773	19,332	17,764	21,123	25,328	23,589	11,929	17,769	13,668	9,340	19,912	23,369	18,276
Red/Purple Lines	83,229	63,847	83,821	63,627	80,905	71,293	63,798	49,520	55,687	93,356	50,272	62,795	49,849
Green Line	14,712	18,988	12,516	28,350	16,495	25,856	17,688	15,504	15,172	28,980	14,115	11,111	25,855
Gold Line	83,320	35,489	41,867	80,419	66,350	33,531	26,904	41,188	79,364	37,202	54,208	47,288	86,031
Goal	24,000	24,000	24,000	24,000	24,000	24,000	24,000	24,000	24,000	24,000	24,000	24,000	24,000

Mean Miles Between Major Failures (all)

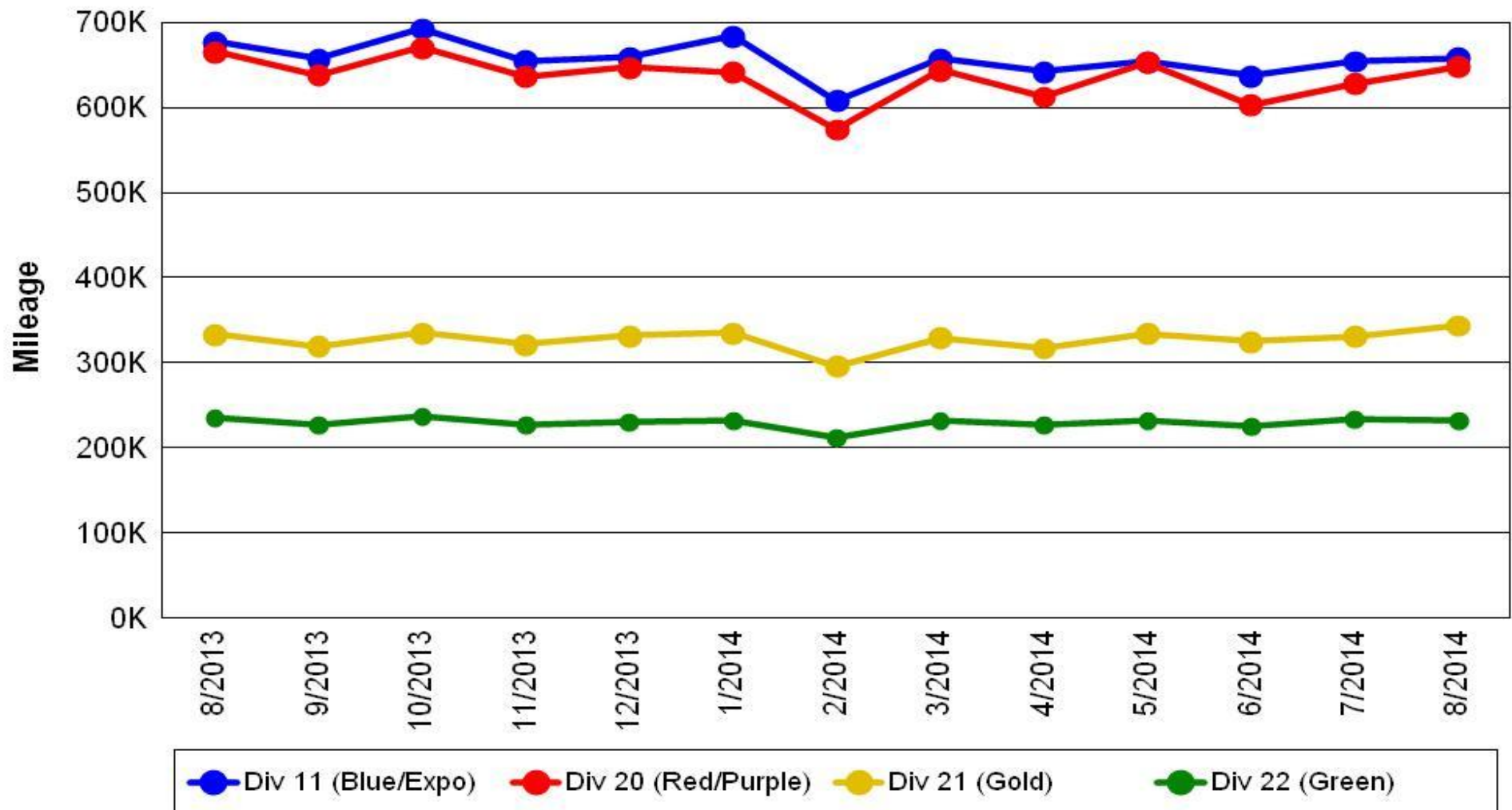


	Aug-13	Sep-13	Oct-13	Nov-13	Dec-13	Jan-14	Feb-14	Mar-14	Apr-14	May-14	Jun-14	Jul-14	Aug-14
All Rail	38,230	28,354	26,164	34,709	35,254	33,224	20,370	25,524	23,376	19,935	27,144	27,979	30,367
Goal	24,000	24,000	24,000	24,000	24,000	24,000	24,000	24,000	24,000	24,000	24,000	24,000	24,000

Mileage Between Data Range (by month)

August 2014

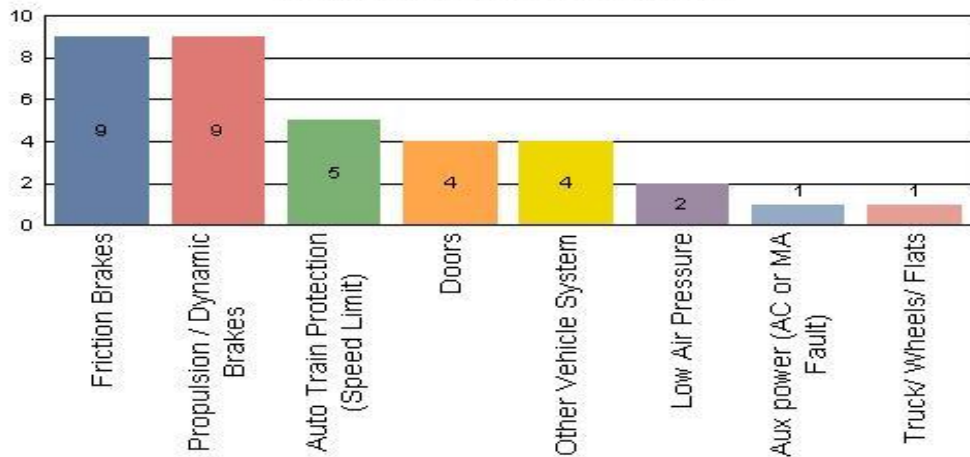
Rail Division Monthly Mileage



Top Incident Categories August 2014

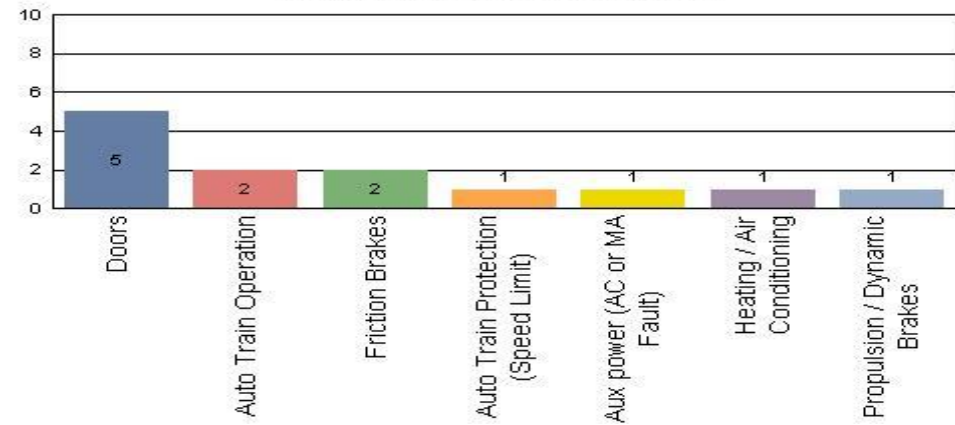
Metro Blue/Expo Line

Top Incident Categories



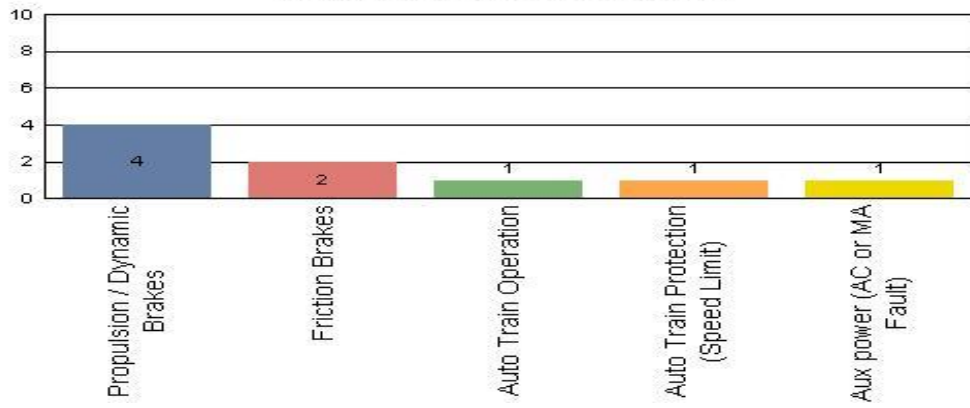
Metro Red/Purple Line

Top Incident Categories



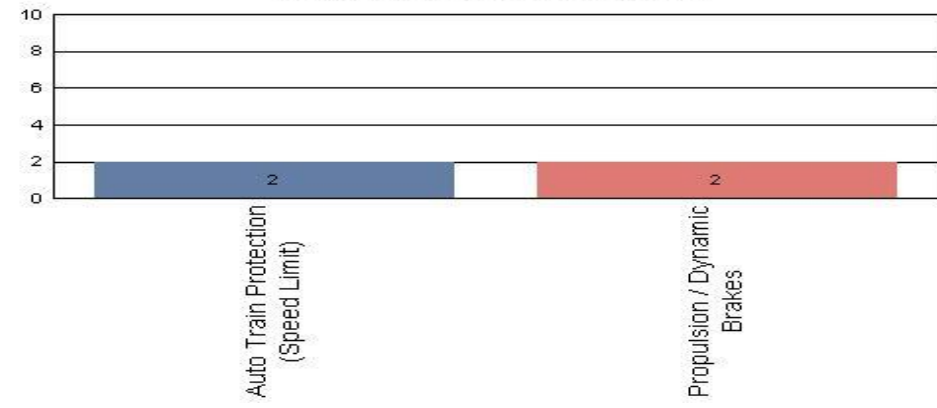
Metro Green Line

Top Incident Categories



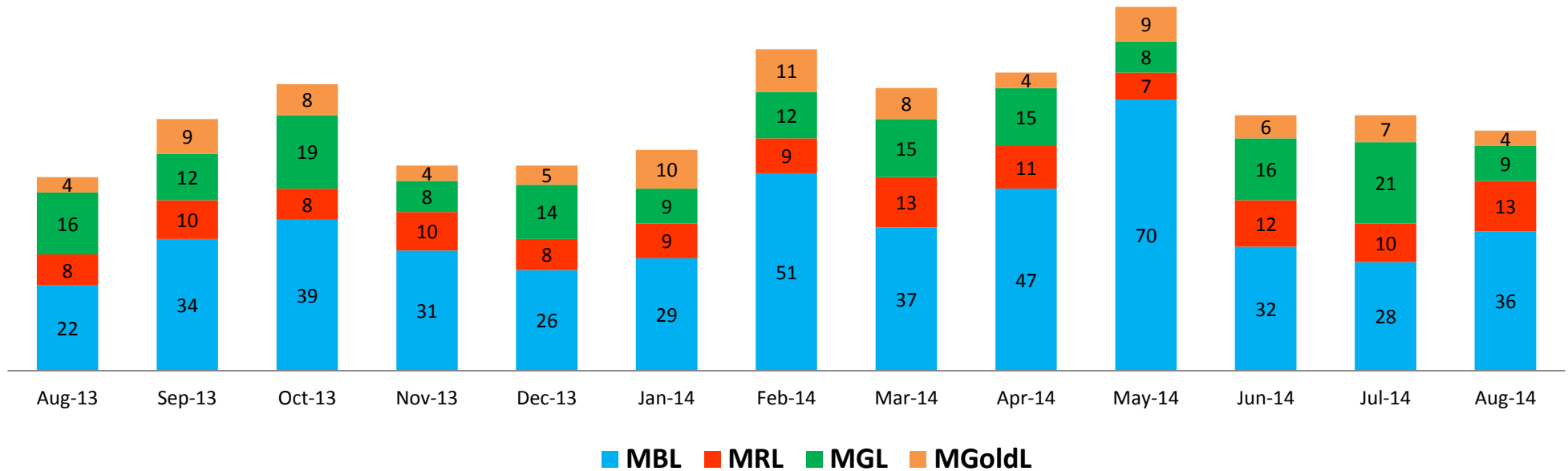
Metro Gold Line

Top Incident Categories



Major Incidents August 2014

Numbers of Major Incidents by Line



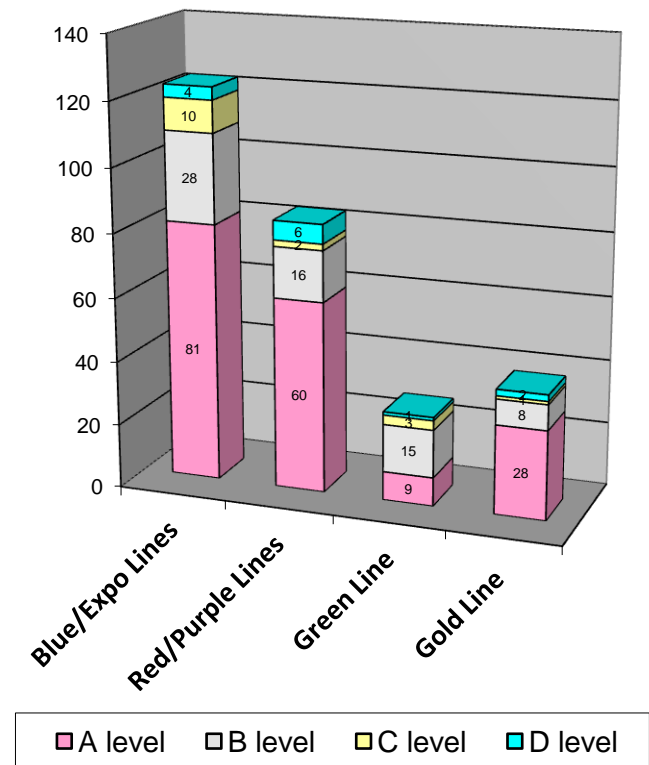
Preventive Maintenance Compliance

August 2014

PM Compliance	Aug-13	Sep-13	Oct-13	Nov-13	Dec-13	Jan-14	Feb-14	Mar-14	Apr-14	May-14	Jun-14	Jul-14	Aug-14
Blue/Expo Lines	100%	100%	100%	100%	100%	100%	100%	100%	100%	100%	100%	100%	100%
Red/Purple Lines	100%	100%	100%	100%	100%	100%	100%	100%	100%	100%	100%	100%	100%
Green Line	100%	100%	96%	92%	100%	100%	100%	100%	100%	100%	97%*	100%	100%
Gold Line	100%	100%	100%	100%	100%	100%	100%	100%	100%	100%	100%	100%	100%

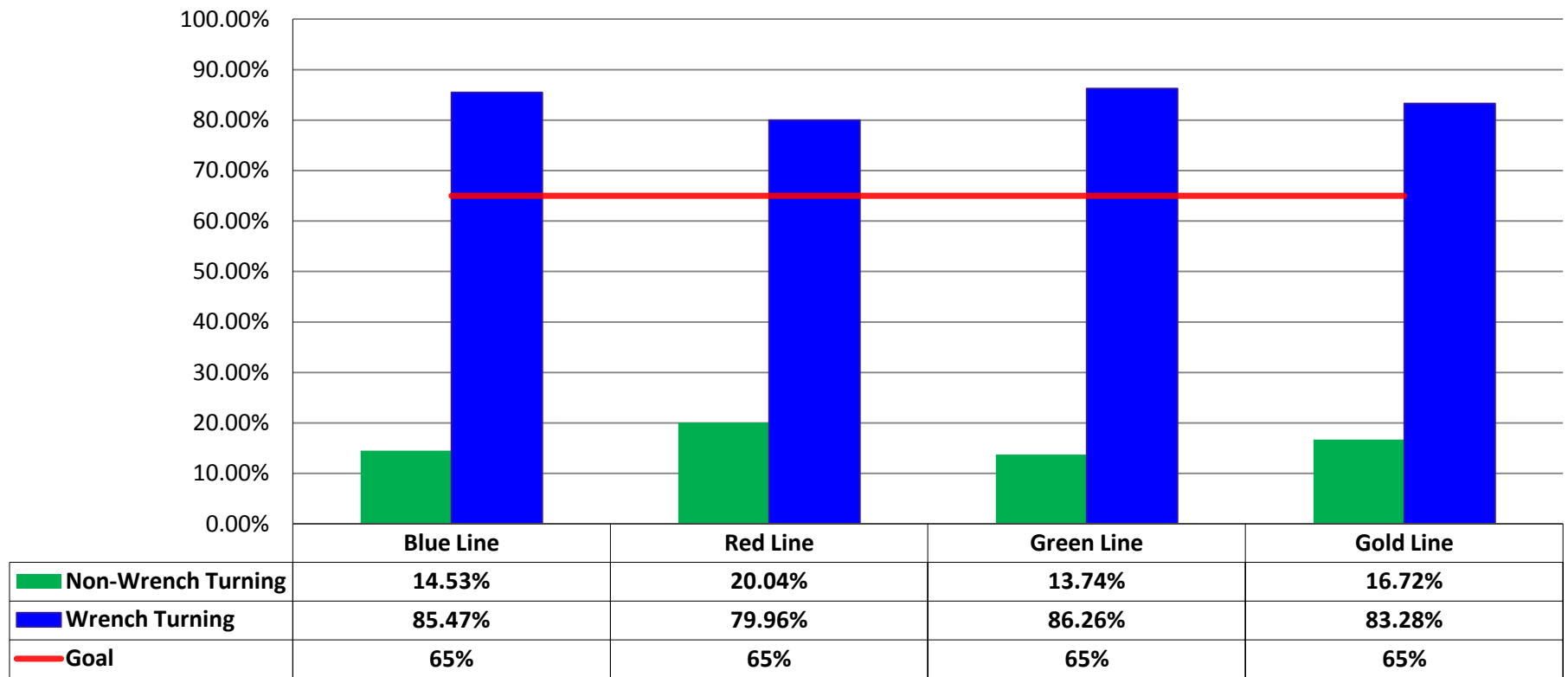
Number of Preventive Maintenance Inspections - August 2014					
Line	A level	B level	C level	D level	Totals
Blue/Expo Lines	81	28	10	4	123
Red/Purple Lines	60	16	2	6	84
Green Line	9	15	3	1	28
Gold Line	28	8	1	2	39
Totals:	178	67	16	13	274

Explanation of PM Inspection levels		Miles			
Line	Type	A level	B level	C level	D level
Blue/Expo Lines	P865/P2020	5,000	15,000	30,000	60,000
Blue/Expo Lines	P2000	7,500	22,500	45,000	90,000
Red/Purple Lines	A650	7,500	22,500	45,000	90,000
Green Line	P2000	7,500	22,500	45,000	90,000
Gold Line	P2550	10,000	30,000	60,000	120,000



RFS Wrench Turning August 2014

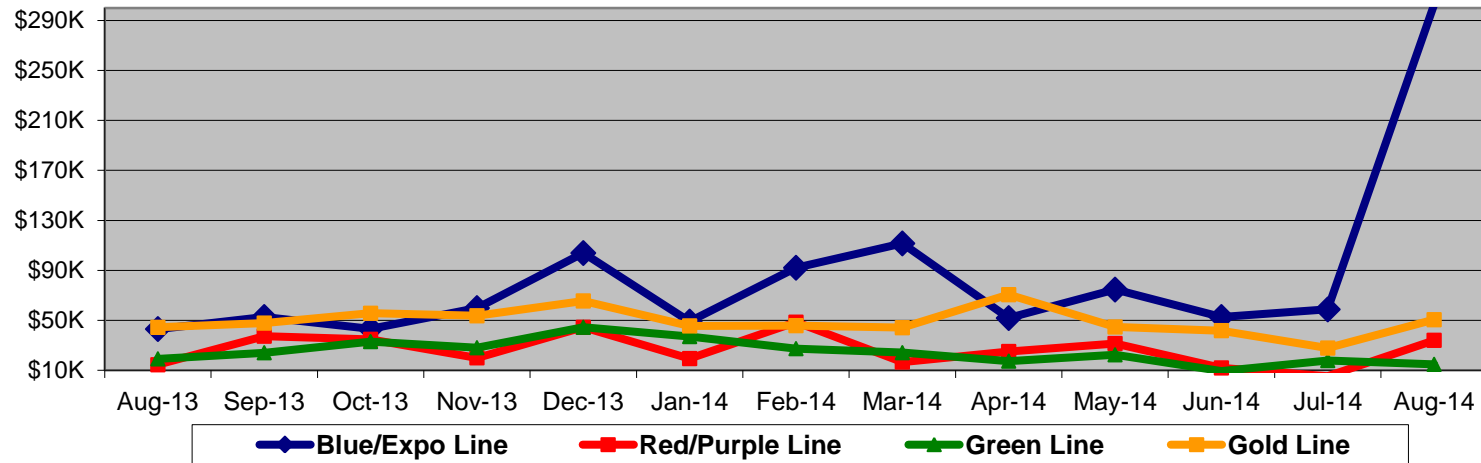
RFS - Wrench Turning August 2014



Vandalism & Graffiti Report

August 2014

	Graffiti Costs													
	Aug-13	Sep-13	Oct-13	Nov-13	Dec-13	Jan-14	Feb-14	Mar-14	Apr-14	May-14	Jun-14	Jul-14	Aug-14	13-Month Period
Blue/Expo Line	\$43K	\$53K	\$43K	\$60K	\$104K	\$49K	\$92K	\$112K	\$52K	\$75K	\$53K	\$59K	\$303K	\$1096K
Red/Purple Line	\$14K	\$37K	\$35K	\$20K	\$44K	\$19K	\$49K	\$17K	\$25K	\$32K	\$12K	\$5K	\$34K	\$344K
Green Line	\$19K	\$24K	\$33K	\$28K	\$44K	\$37K	\$27K	\$24K	\$17K	\$22K	\$9K	\$18K	\$15K	\$320K
Gold Line	\$44K	\$48K	\$56K	\$54K	\$66K	\$46K	\$46K	\$44K	\$71K	\$45K	\$42K	\$28K	\$51K	\$638K
Totals:	\$121K	\$162K	\$167K	\$162K	\$258K	\$151K	\$214K	\$197K	\$165K	\$173K	\$116K	\$110K	\$402K	\$2,398K

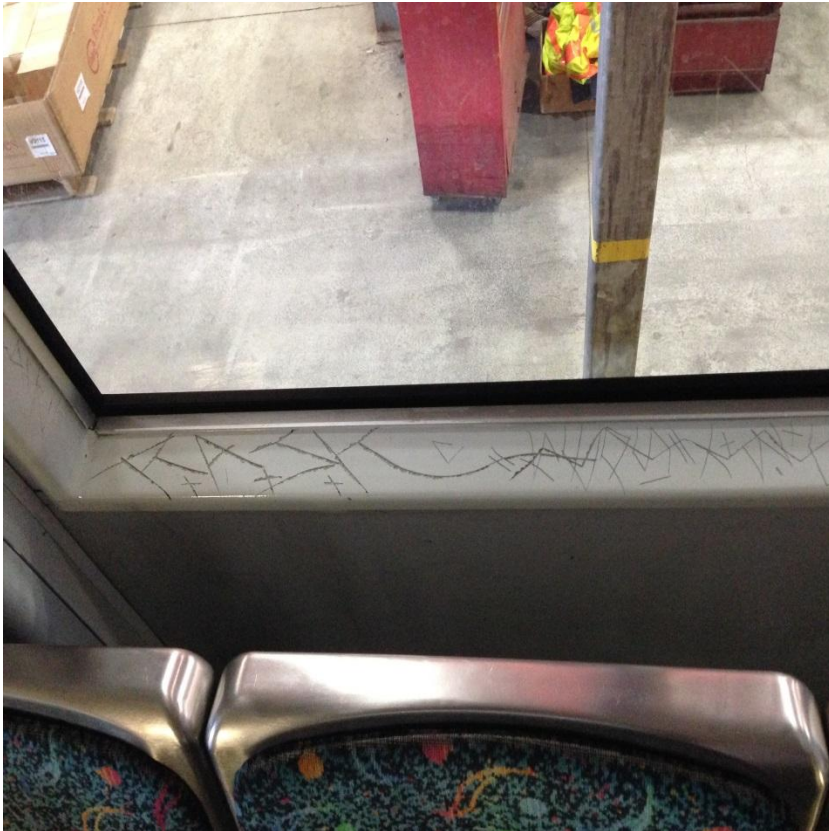


August 2014 Vandalism & Graffiti - All Rail				
	Qty	Labor	Materials	Totals
Windows Replaced	1,632	\$ 43,414	\$ 244,505	\$ 287,919
Vandal Shields	1,182	\$ 10,993	\$ 35,160	\$ 46,153
Seats Cleaned	587	\$ 3,285	\$ -	\$ 3,285
Seats Replaced	283	\$ 8,915	\$ 13,208	\$ 22,123
Graffiti Removal - Other	1,152	\$ 29,551	\$ 1,907	\$ 31,458
Repainting Panels	155	\$ 5,952	\$ 5,452	\$ 11,404
Totals	4,991	\$ 102,110	\$ 300,232	\$ 402,342

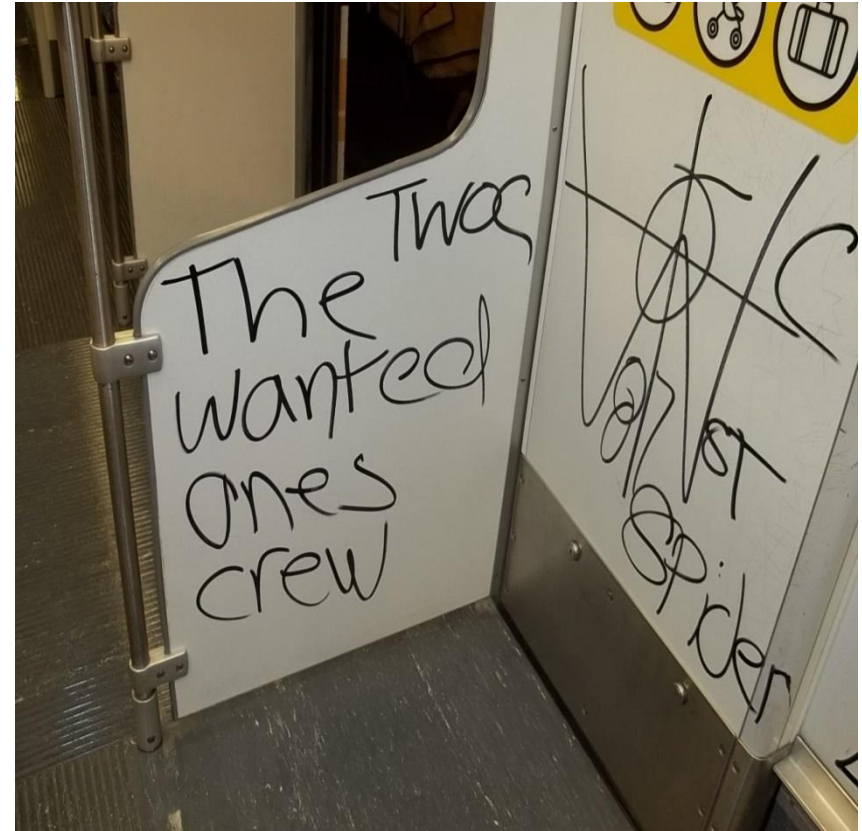
Graffiti Pictures

August 2014

Blue Line



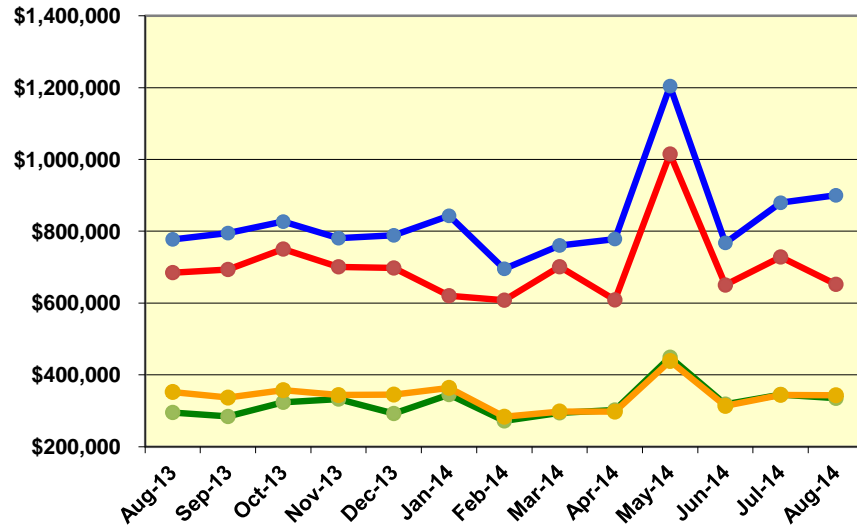
Green Line



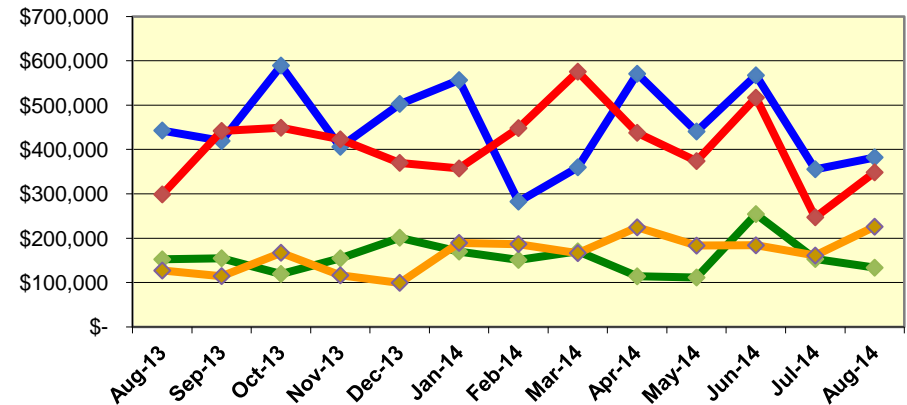
Labor and Material Costs

August 2014

Labor Costs



Material Costs



Aug-13	Sep-13	Oct-13	Nov-13	Dec-13	Jan-14	Feb-14	Mar-14	Apr-14	May-14*	Jun-14	Jul-14	Aug-14
--------	--------	--------	--------	--------	--------	--------	--------	--------	---------	--------	--------	--------

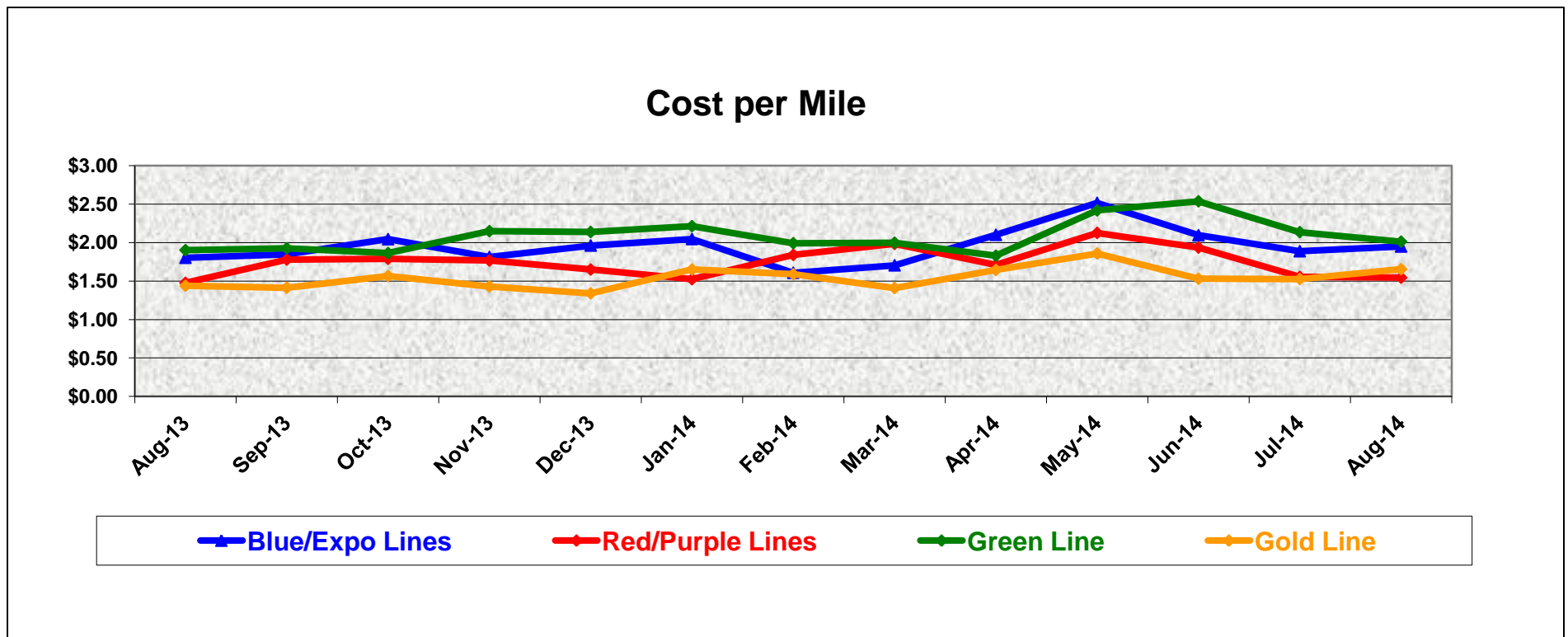
	LABOR COSTS												
Blue/Expo Lines	\$ 777,432	\$ 794,828	\$ 826,769	\$ 780,678	\$ 788,589	\$ 842,979	\$ 695,394	\$ 760,511	\$ 778,469	\$ 1,204,234	\$ 767,717	\$ 879,339	\$ 900,043
Red/Purple Lines	\$ 684,850	\$ 693,597	\$ 750,452	\$ 700,975	\$ 697,759	\$ 620,440	\$ 608,097	\$ 701,156	\$ 608,816	\$ 1,015,092	\$ 650,226	\$ 728,383	\$ 652,202
Green Line	\$ 295,374	\$ 284,105	\$ 323,749	\$ 332,737	\$ 292,482	\$ 345,262	\$ 271,877	\$ 294,381	\$ 302,213	\$ 449,117	\$ 318,516	\$ 345,270	\$ 334,772
Gold Line	\$ 352,473	\$ 336,795	\$ 357,408	\$ 343,700	\$ 345,170	\$ 363,886	\$ 283,563	\$ 298,069	\$ 297,634	\$ 438,759	\$ 313,589	\$ 344,331	\$ 343,246
Totals	\$ 2,110,129	\$ 2,109,325	\$ 2,258,378	\$ 2,158,090	\$ 2,123,999	\$ 2,172,567	\$ 1,858,931	\$ 2,054,117	\$ 1,987,132	\$ 3,107,202	\$ 2,050,048	\$ 2,297,323	\$ 2,230,262

*ATU Contract for pay increase was approved by the Board and ATU staff got retro pay in May 2014.

	MATERIAL COSTS												
Blue/Expo Lines	\$ 442,803	\$ 419,133	\$ 589,324	\$ 406,032	\$ 502,761	\$ 556,457	\$ 282,466	\$ 359,845	\$ 570,775	\$ 440,576	\$ 567,257	\$ 355,405	\$ 382,184
Red/Purple Lines	\$ 298,670	\$ 441,927	\$ 449,033	\$ 422,849	\$ 369,819	\$ 357,244	\$ 448,225	\$ 575,495	\$ 437,612	\$ 373,815	\$ 516,934	\$ 247,048	\$ 348,370
Green Line	\$ 152,243	\$ 154,678	\$ 119,411	\$ 154,582	\$ 201,035	\$ 169,759	\$ 150,881	\$ 170,250	\$ 113,979	\$ 111,344	\$ 254,264	\$ 153,001	\$ 133,386
Gold Line	\$ 126,942	\$ 114,461	\$ 167,128	\$ 116,167	\$ 99,267	\$ 189,310	\$ 186,640	\$ 166,216	\$ 224,430	\$ 183,115	\$ 183,869	\$ 160,751	\$ 225,818
Totals	\$ 1,020,659	\$ 1,130,199	\$ 1,324,896	\$ 1,099,631	\$ 1,172,883	\$ 1,272,769	\$ 1,068,212	\$ 1,271,807	\$ 1,346,796	\$ 1,108,849	\$ 1,522,323	\$ 916,204	\$ 1,089,759

Cost Per Mile August 2014

Cost per mile:	Aug-13	Sep-13	Oct-13	Nov-13	Dec-13	Jan-14	Feb-14	Mar-14	Apr-14	May-14	Jun-14	Jul-14	Aug-14
Blue/Expo Lines	\$1.80	\$1.85	\$2.04	\$1.81	\$1.96	\$2.05	\$1.61	\$1.70	\$2.10	\$2.52	\$2.10	\$1.89	\$1.95
Red/Purple Lines	\$1.48	\$1.78	\$1.79	\$1.77	\$1.65	\$1.52	\$1.84	\$1.98	\$1.71	\$2.13	\$1.93	\$1.55	\$1.54
Green Line	\$1.90	\$1.93	\$1.86	\$2.15	\$2.14	\$2.21	\$1.99	\$2.00	\$1.83	\$2.42	\$2.54	\$2.14	\$2.01
Gold Line	\$1.44	\$1.41	\$1.57	\$1.43	\$1.34	\$1.65	\$1.59	\$1.41	\$1.64	\$1.86	\$1.53	\$1.53	\$1.65



ATU Absences vs. Overtime

August 2014

ABSENCE TYPE and HOURS	3940 Admin.	3941 Blue	3942 Red	3943 Green	3944 Gold	3947 Expo	Total
AWP-ABSENT W/O PERMISSION	-	24	-	1	-	-	25
BER-BEREAVEMENT	-	128	-	24	24	-	176
CTO-COMPENSATORY TIME OFF	-	133	250	84	72	16	555
CUT-EMPLOYEE LEAVES EARLY	-	1	1	1	1	-	3
CVA - CASUAL VACATION	108	310	484	112	108	-	1,122
DSL-DISABILITY LEAVE/LONG	-	680	568	368	-	184	1,800
EFH-EMG. FLOAT HOL.	-	24	64	48	48	-	184
ETO-EXCUSED TIME OFF	3	75	32	21	66	4	199
FMI-FAM IND INJURY	-	8	24	-	168	-	200
FML-FAMILY CARE LEAVE	-	565	467	400	80	-	1,511
FMS-FAMILY LEAVE SICK	-	16	99	48	24	-	187
HLF-HOLIDAY FLOATING	56	712	440	280	136	48	1,672
HOL-HOLIDAY LEGAL	-	104	88	16	32	8	248
II-INDUSTRIAL INJURY	-	-	-	288	-	-	288
IPD-INJURED PARTIAL DAY	-	-	4	-	-	-	4
JUR-JURY DUTY	-	8	-	48	-	-	56
LC1-LABOR CODE 233	2	96	129	40	120	17	404
LTI-OCCPIL/LONGTRM INJ LEAVE	-	168	168	-	216	-	552
MLN-MILITARY ABSENCE-UNPAID	-	16	40	-	-	-	56
OWP-OFF WITH PERMISSION	-	-	-	-	4	-	4
RTO-REQUESTED TIME OFF-NO PAY	-	13	-	32	-	-	45
SCK-SICK PAY	16	392	72	32	96	-	608
SCW-SICK WITHOUT PAY	-	8	32	16	-	-	56
SUS-DISCIPLINARY SUSPENSION	-	-	-	-	40	-	40
TAR-TARDY	0	5	2	1	0	-	8
UB-UNION BUSINESS	-	-	-	8	8	-	16
UNP-UNION BUS PAID	-	-	16	-	-	-	16
VAC-VACATION	52	1,278	1,568	575	952	56	4,481
VAS-VACATION WHILE SICK	-	-	16	-	-	-	16
Total Absence Hours	237	4,763	4,563	2,443	2,195	333	14,533
ATU Number of Work Force (assigned)	8	126	109	48	51	5	347
Full Work Force hours/month	1,386	21,836	18,890	8,318	8,838	867	60,135
Absence as a % of Work Force	17%	22%	24%	29%	25%	38%	24%

OVERTIME TYPE and HOURS	3940 Admin.	3941 Blue	3942 Red	3943 Green	3944 Gold	3947 Expo	Total
CTB-COMPENSATORY TIME TO BANK	4	282	562	111	98	32	1,088
OTP-PREM OVERTIME	366	6,139	4,654	2,340	1,713	165	15,378
WLO-Worked Lunch Overtime	21	180	157	151	93	8	609
Total Overtime Hours	390	6,601	5,374	2,602	1,904	204	17,074
Overtime as a % of Work Force	28%	30%	28%	31%	22%	24%	28%
FTE Calculation - Absence & OT Hour	3940	3941	3942	3943	3944	3947	Total
Absences FTE	1	27	26	14	13	2	84
OTP FTE	2	38	31	15	11	1	99
FTE Difference	-1	-11	-5	-1	2	1	-15

RFS Instruction Department Activities

August 2014

Training classes completed during the month of August 2014

Description	Course Hours	Student Count	Training Hours
Blue & Expo Line Training - (P865/2020 & P2000 LRV):			
RFS 865/2020 M.A. & LVPS	8	5	40
WAYSIDE WORKER PROTECTION	4	3	12
Total Blue Line Training (Hours):			52
Red Line Training (Breda A650 HRV):			
RFS SIMMONS WHEEL TRUE	24	4	96
Total Red Line Training (Hours):			96
Green Line Training (P2000 LRVs):			
RFS SIEMENS 2000 FRICTION BRAKES	80	3	240
RFS SIEMENS 2000 US&S ATP/ATO/TWC	24	4	96
Total Green Line Training (Hours):			240
Gold Line Training (P2550 LRVs):			
RFS SIMMONS WHEEL TRUE	24	4	96
RFS ANSALDOBREDA 2550 APS\LVPS\BATTERY	24	2	48
Total Gold Line Training (Hours):			144
Total RFS Instruction for the month of August 2014 (Hours):			532

Other Instruction Activities

Instructor Vacation and Holiday	80
A650 Curriculum, Administrative, and Technical Support	80
P865/P2020 Curriculum, Administrative, and Technical Support	80
P2000 Curriculum, Administrative, and Technical Support	56
P2550 Curriculum, Administrative, and Technical Support	40
LATTC Curriculum Development (KSME)	120

Total Other Instruction Activities **456**

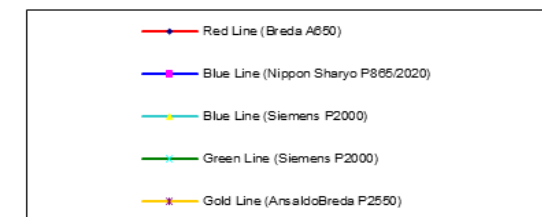
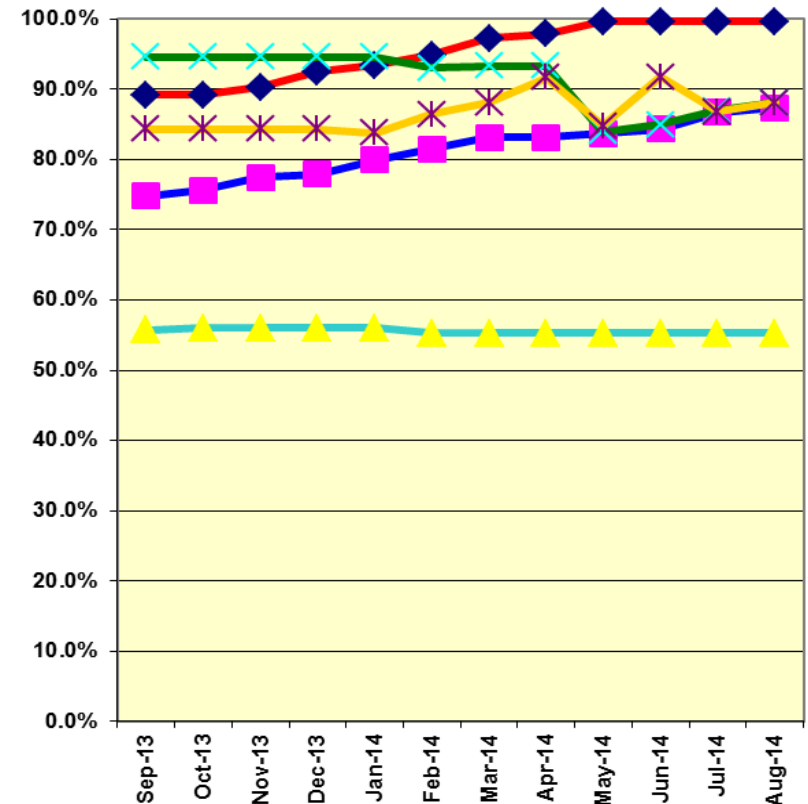
Core Vehicle Training Completed: BLUE RED GREEN GOLD

Percentage of core vehicle training complete: 87.4% 99.6% 88.1% 88.1%

Siemens P2000 training complete: 55.3% N/A N/A N/A

Average Specialist Rail Experience Level in Years: 12.3 10.8 9.6 9.2

Core Training Completed



Variations caused by new hires, employee transfers, & training completed