



Rail Fleet Services Monthly Report December 2014



Metro

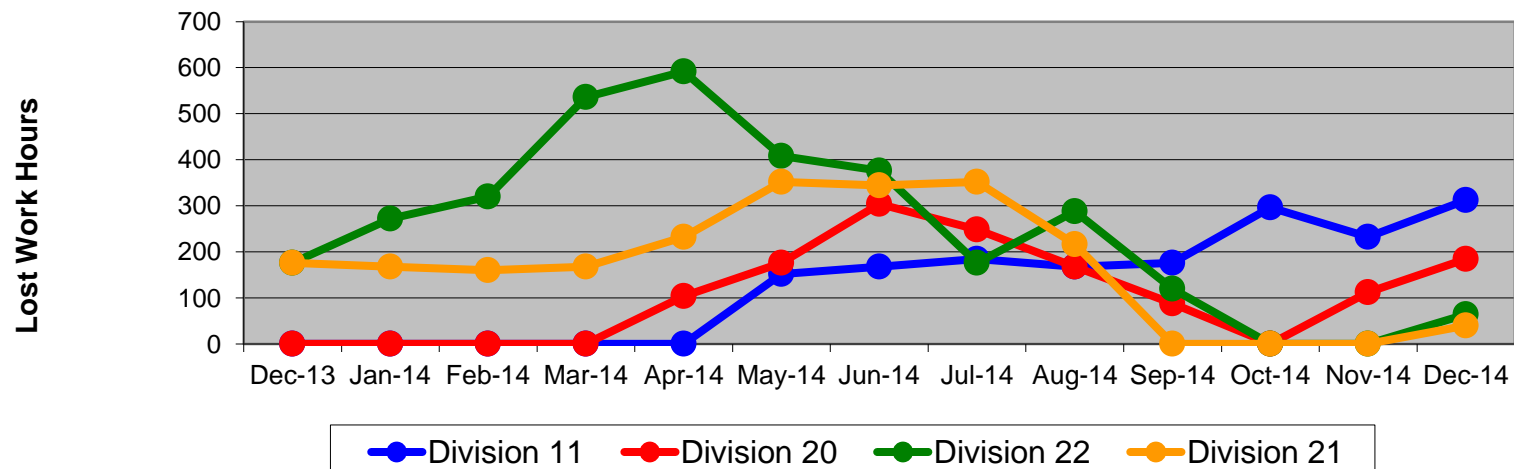
Table of Contents

•	Safety		
	- Industrial Injuries	Page	3
	- Rail Vehicle Accidents & Major Incidents	Page	4
•	Customer Service		
	- Service Delivery – AM/PM Pull-Outs	Page	5
	- Vehicle Utilization – Blue Line & Green Line	Page	6
	- Vehicle Utilization – Red Line & Gold Line	Page	7
	- All Train Delay Incidents	Page	8
	- Mean Miles Between Failures (Major)	Page	9
	- Mileage Between Data Range (by month)	Page	10
•	Business Processes		
	- Top Incident Categories	Page	11
	- Major Incidents	Page	12
	- Preventive Maintenance Compliance	Page	13
	- RFS Wrench Turning	Page	14
•	Finance		
	- Vandalism & Graffiti Costs	Page	15
	- Graffiti Pictures	Page	16
	- Labor & Material Costs	Page	17
	- Cost per mile	Page	18
	- Absence vs. Overtime	Page	19

Industrial Injuries – Lost Work Hours December 2013-2014

	Dec-13	Jan-14	Feb-14	Mar-14	Apr-14	May-14	Jun-14	Jul-14	Aug-14	Sep-14	Oct-14	Nov-14	Dec-14	13-Month Period
Division 11	0	0	0	0	0	152	168	184	168	176	296	232	312	1,688
Division 20	0	0	0	0	104	176	304	248	168	88	0	112	184	1,384
Division 22	176	272	320	536	592	408	376	176	288	120	0	0	64	3,328
Division 21	176	168	160	168	232	352	344	352	216	0	0	0	40	2,208
Totals	352	440	480	704	928	1,088	1,192	960	840	384	296	344	600	8,608

Industrial Injuries (lost work hours)



Rail Vehicle Accidents & Major Incidents

December 2013-2014

Repair Costs	Dec-13	Jan-14	Feb-14	Mar-14	Apr-14	May-14	Jun-14	Jul-14	Aug-14	Sep-14	Oct-14	Nov-14	Dec-14	13-Month Period
Blue/Expo Line	\$0	\$8,370	\$15,618	\$13,690	\$72,961	\$9,463	\$9,964	\$1,528	\$207	\$42,690	\$12,945	\$5,762	\$3,463	\$196,661
Red/Purple Line	\$0	\$0	\$0	\$356	\$0	\$0	\$0	\$0	\$0	\$0	\$4,194	\$0	\$0	\$4,550
Green Line	\$1,008	\$0	\$0	\$0	\$0	\$0	\$0	\$0	\$0	\$0	\$267	\$0	\$0	\$1,275
Gold Line	\$0	\$0	\$0	\$714	\$0	\$0	\$5,860	\$50,059	\$1,669	\$0	\$0	\$0	\$5,664	\$63,966
Totals	\$1,008	\$8,370	\$15,618	\$14,760	\$72,961	\$9,463	\$15,824	\$51,587	\$1,876	\$42,690	\$17,406	\$5,762	\$9,127	\$266,452

Rail Vehicle Accident Costs - December 2014				
Date	Incident #	Problem Code	Incident Description	Repair Cost
Metro Blue/Expo Line				
12/9/14	2539621	Train vs. Pedetrian	A 10-72 was reported at Track #2, Nadeau gradecrossing.	\$ 189
12/20/14	2543663	Train vs. Vehicle	A 10-73 was reported at Track #2, Southbound, 18th Street and Flower.	\$ 3,274
Total				\$ 3,463
Metro Gold Line				
12/2/14	2536786	Train vs. Vehicle	A 10-73 was reported at Track #1, 1st Street and Vignes. Car lost control and made contact with the side of the train.	\$ 648
12/6/14	2538448	Train vs. Vehicle	A 10-73 was reported at Track #1, Northbound at Maravilla.	\$ 5,016
Total				\$ 5,664
Grand Total				\$ 9,127
(10-71) = Train vs. Object, (10-72) = Train vs. Pedestrian, (10-73) = Train vs. Vehicle (10-74) = Train vs. MTA Vehicle, (10-75) = Derailment				

Service Delivery December 2014

December 2014 - Service Delivery

Blue/Expo Line Fleet Size: 92

<u>Pull Out</u>	<u>Vehicles Required</u>	<u>Average Available</u>	<u>% Up (Down)</u>
Weekday:	78	78	100%
Weekend:	60	63	105%
Late Pullouts: 2*			
Monthly Mileage:	642,578		

Red/Purple Line Fleet Size: 104

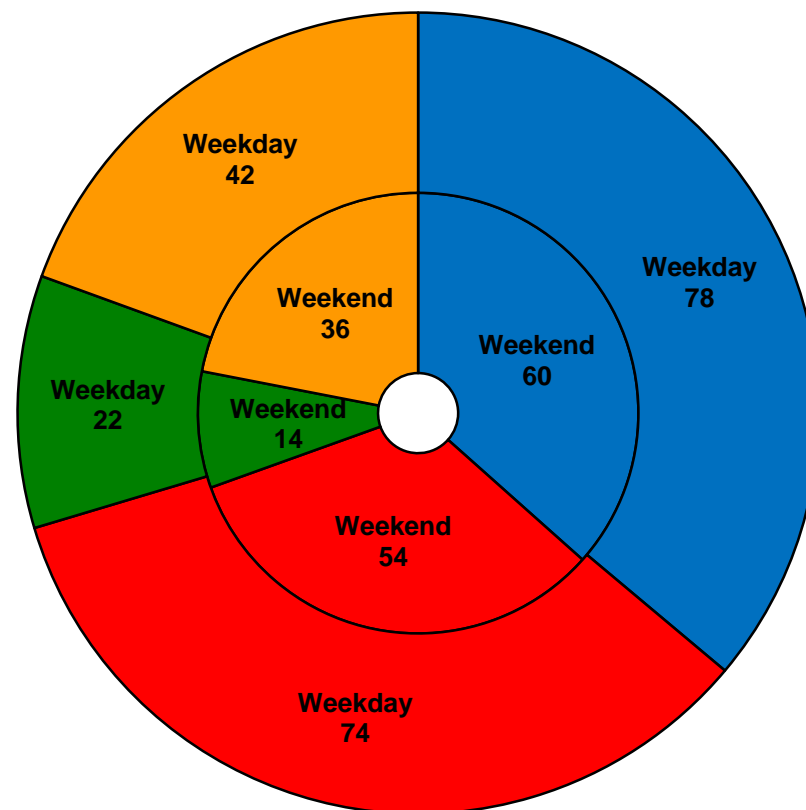
<u>Pull Out</u>	<u>Vehicles Required</u>	<u>Average Available</u>	<u>% Up (Down)</u>
Weekday:	74	80	108%
Weekend:	54	64	119%
Late Pullouts: 0*			
Monthly Mileage:	624,666		

Green Line Fleet Size: 29

<u>Pull Out</u>	<u>Vehicles Required</u>	<u>Average Available</u>	<u>% Up (Down)</u>
Weekday:	22	22	100%
Weekend:	14	16	114%
Late Pullouts: 0*			
Monthly Mileage:	231,202		

Gold Line Fleet Size: 50

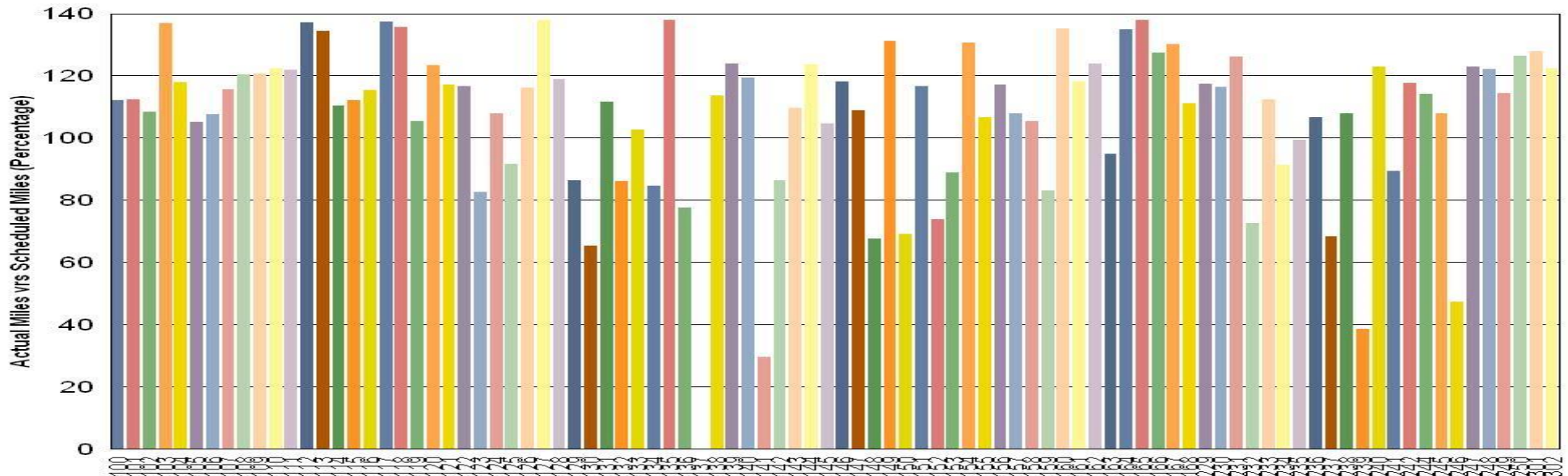
<u>Pull Out</u>	<u>Vehicles Required</u>	<u>Average Available</u>	<u>% Up (Down)</u>
Weekday:	42	42	100%
Weekend:	36	38	106%
Late Pullouts: 0*			
Monthly Mileage:	327,844		



■ Blue/Expo Line ■ Red/Purple Line ■ Green Line ■ Gold Line

Vehicle Utilization December 2014

Metro Blue/Expo Line



Blue/Expo Line:

Car # 137 Out of service due to Major Accident Repair

Car # 141 Out of service for Campaign Work (Interior Graffiti Abatement, Window Replacement/Vandal Shields, Passenger Seat Replacement, etc.)

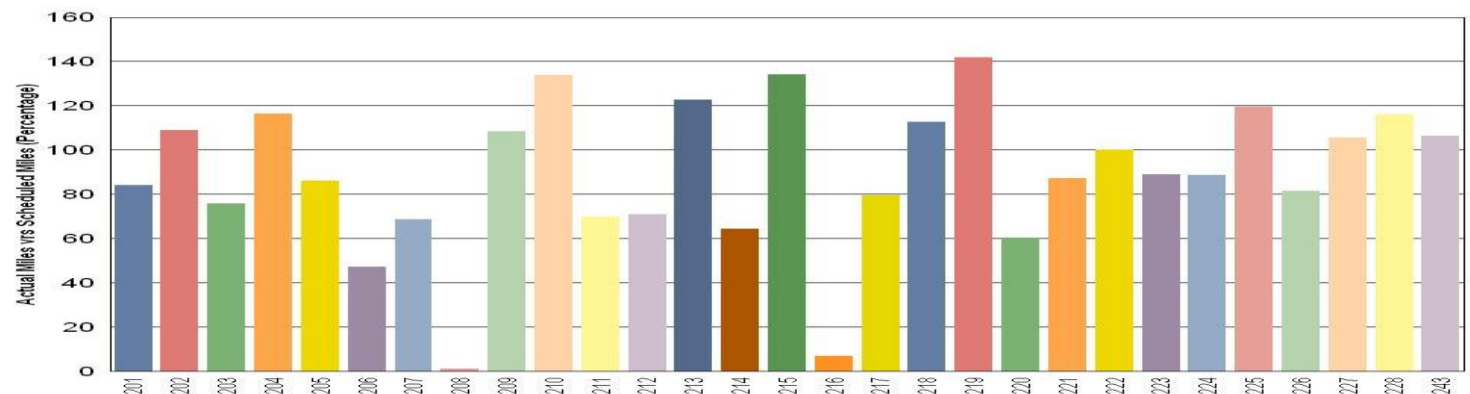
Car # 239 Out of service for Preventive Maintenance Inspection and Truck Work

Metro Green Line

Green Line:

Car # 208 On hold for Propulsion Troubleshooting

Car # 216 On hold for Exterior Body Rehab



Note: Percentage includes an average 4% mileage deduction for yard mileage and vehicle testing.

Vehicle Utilization December 2014

Red/Purple Line:

The following cars were out of service due to:

Car # 503-504 Gearbox Replacement

Car # 505-506 Propulsion Fault

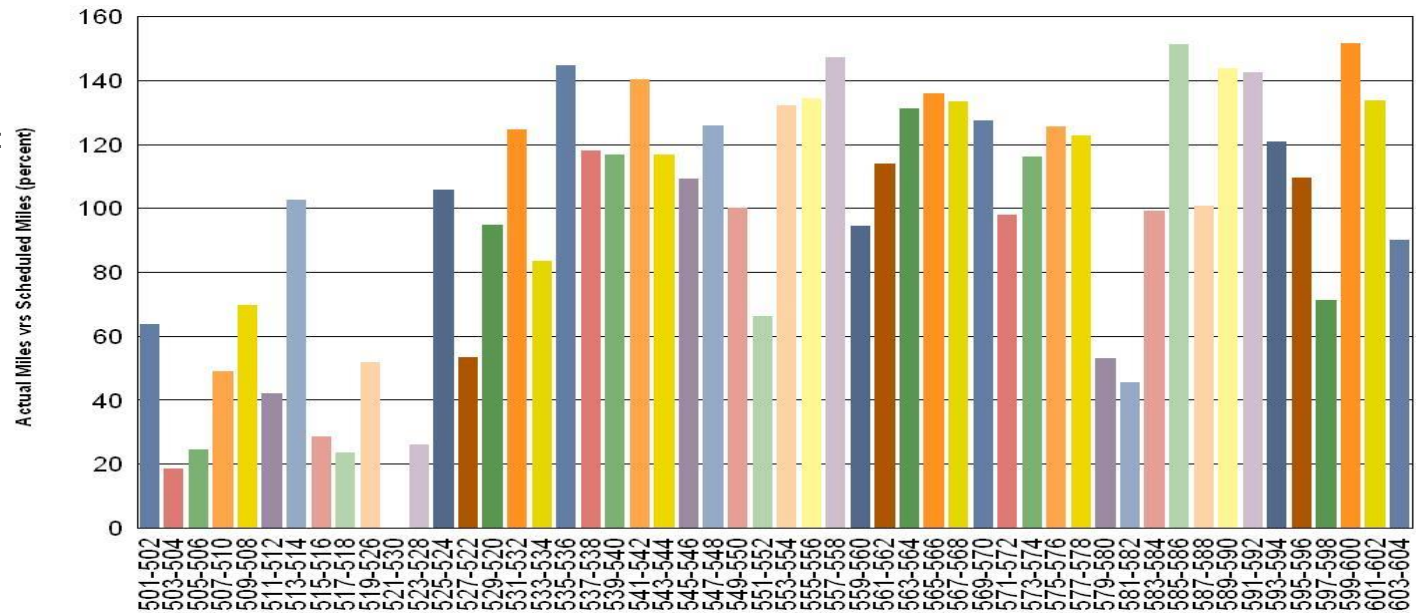
Car # 515-516 Traction Motor Replacement

Car # 517-518 Propulsion Fault

Car # 521-530 Truck Rebuilding

Car # 523-528 Propulsion Fault

Metro Red/Purple Line

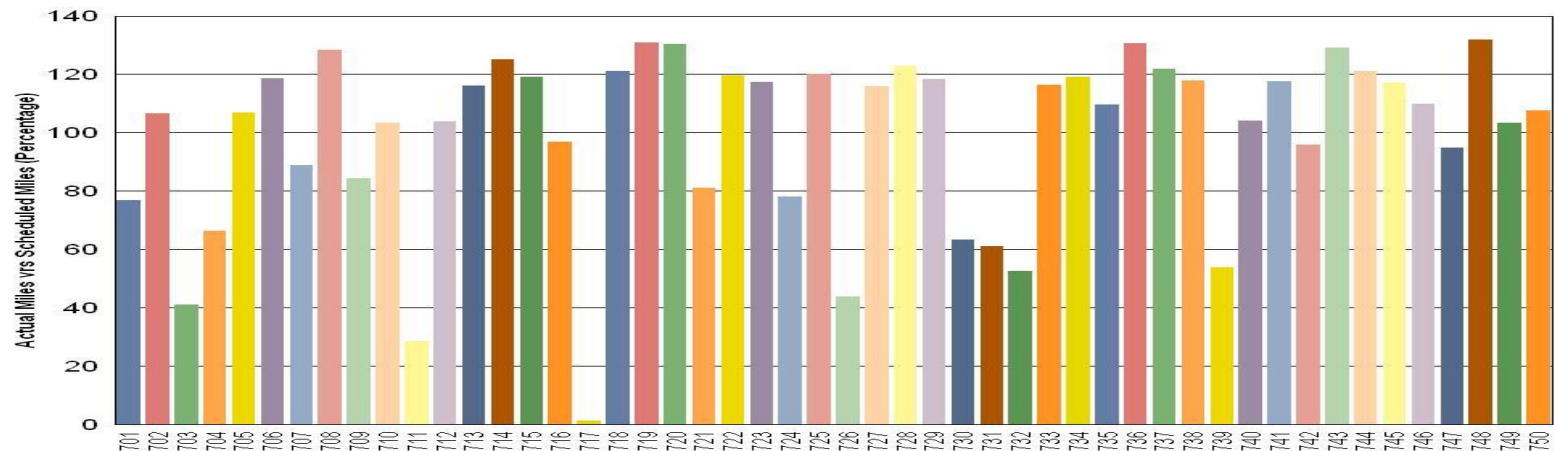


Gold Line:

Car # 711 Out of service for Propulsion Fault

Car # 717 Out of service for Repair of Burnt Wiring

Metro Gold Line



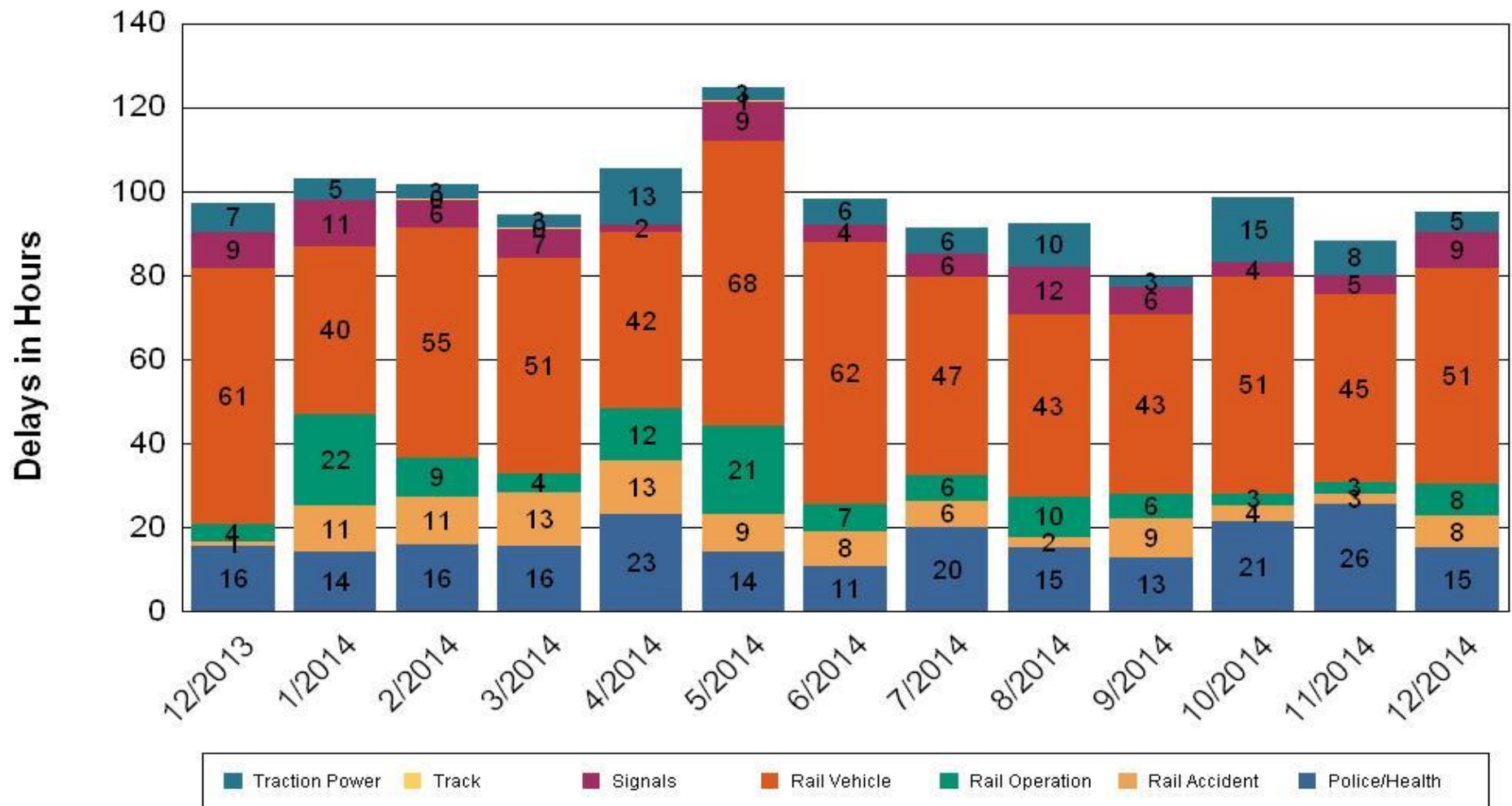
•Percentage includes an average 4% mileage deduction for yard mileage and vehicle testing.



All Train Delays (Hours) December 2013-2014

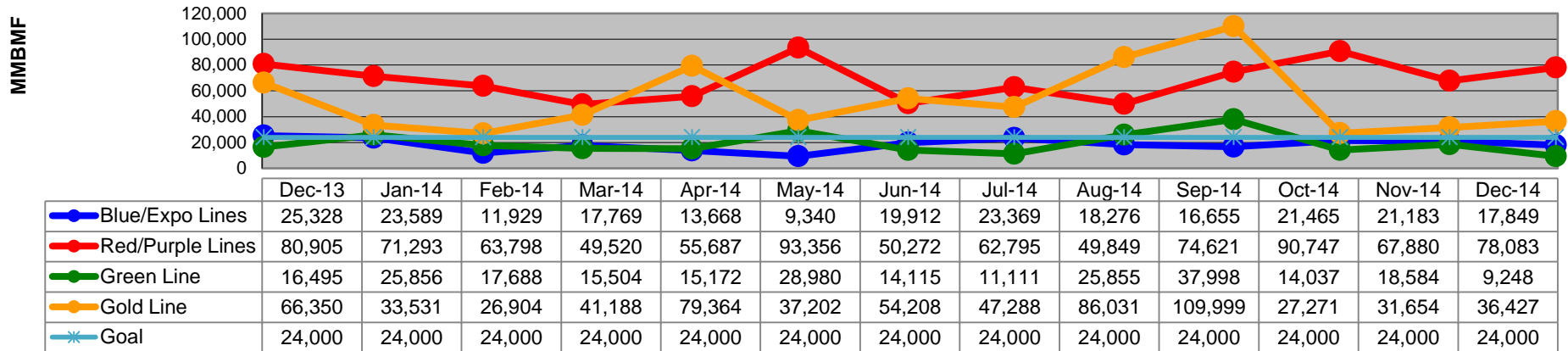
All Train Delays

Totals Include the delay to all trains involved (not just the primary incident)

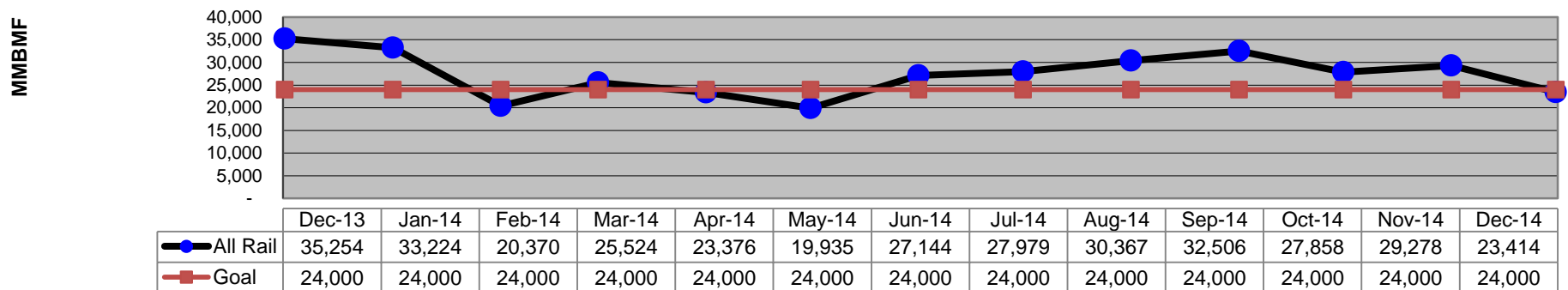


Mean Miles Between Failures (Major) December 2013-2014

Mean Miles Between Major Failures (by line)

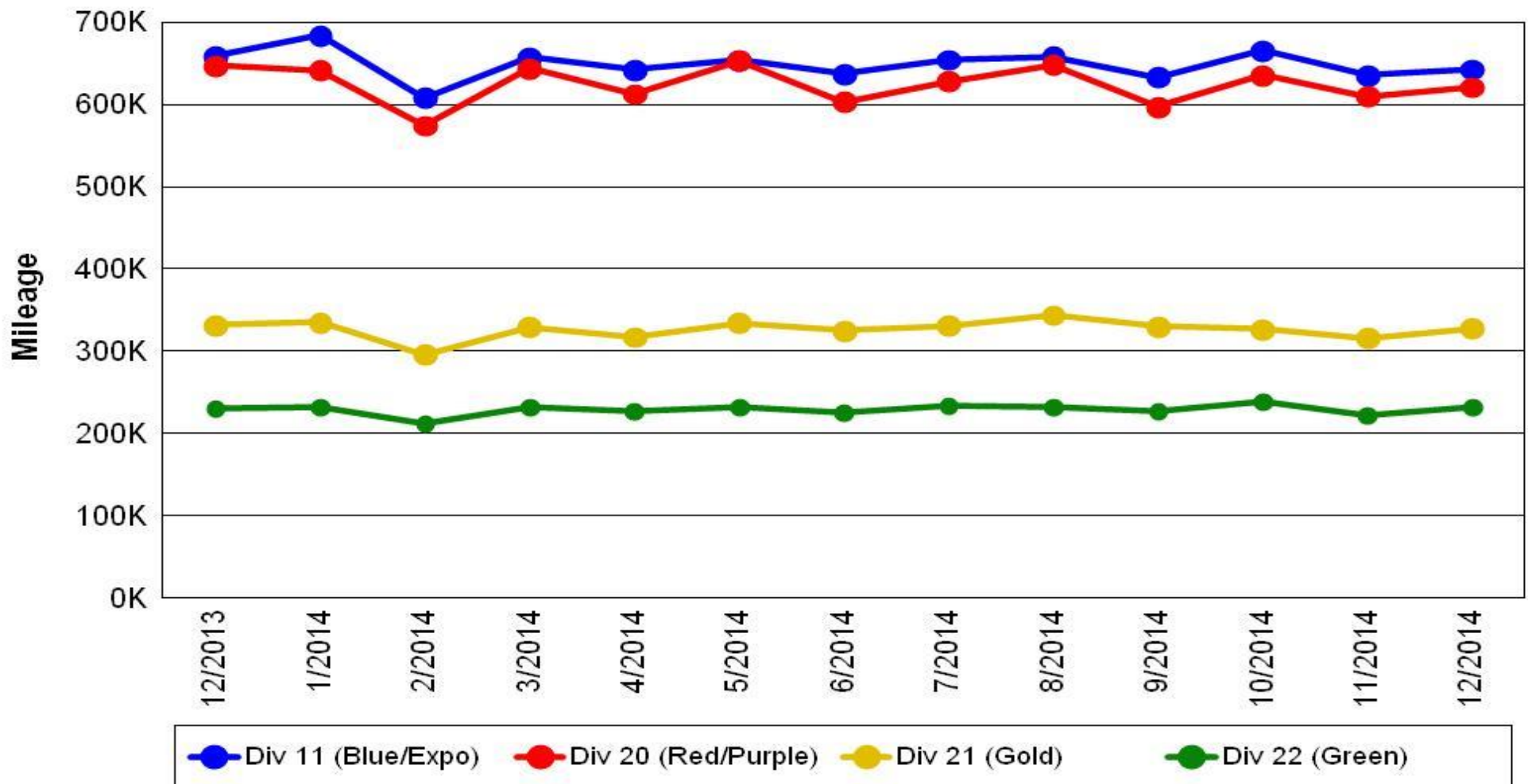


Mean Miles Between Major Failures (all)



Mileage Between Data Range (by month) December 2013-2014

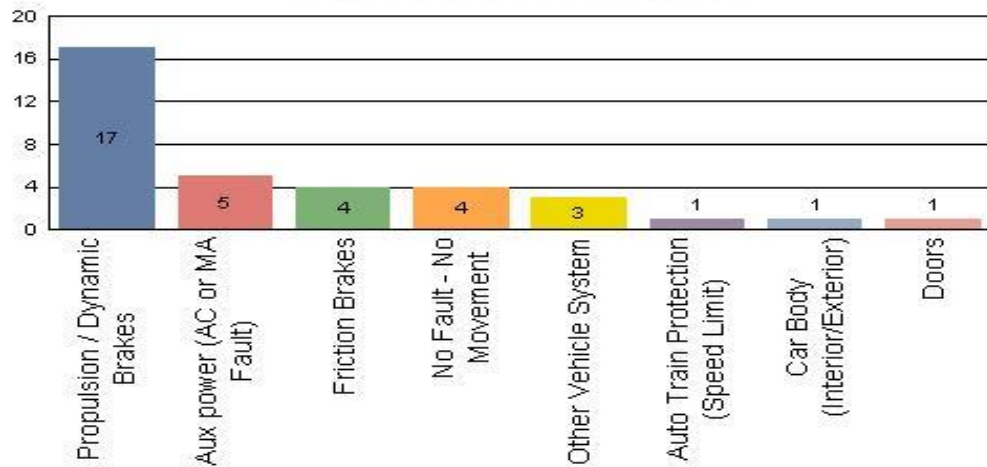
Rail Division Monthly Mileage



Top Incident Categories December 2014

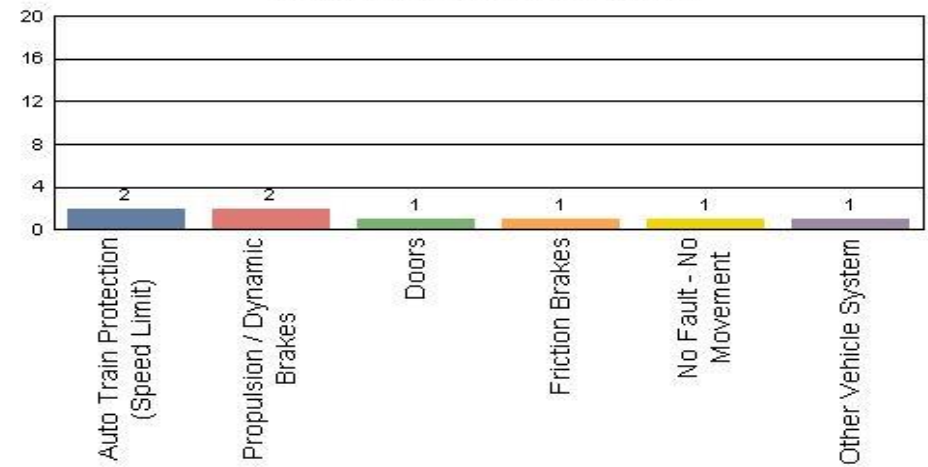
Metro Blue/Expo Line

Top Incident Categories



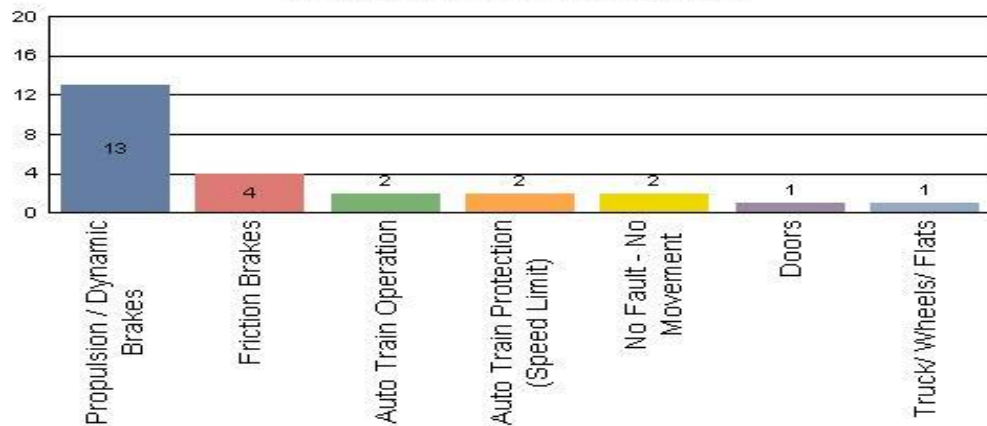
Metro Red/Purple Line

Top Incident Categories



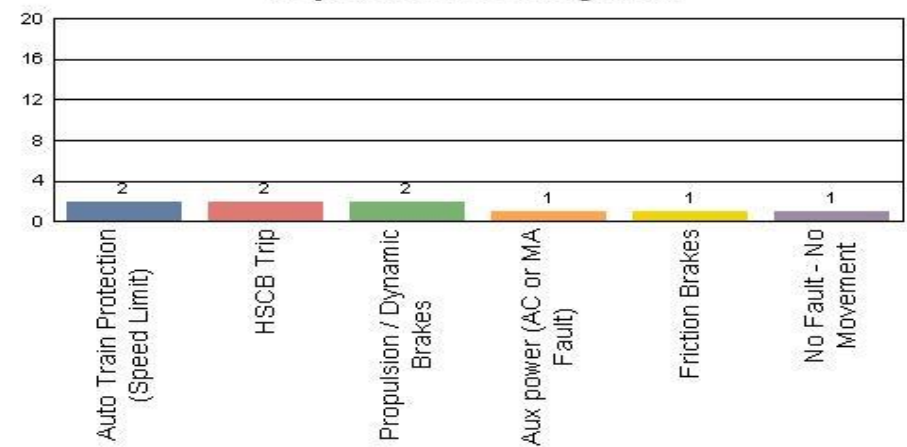
Metro Green Line

Top Incident Categories



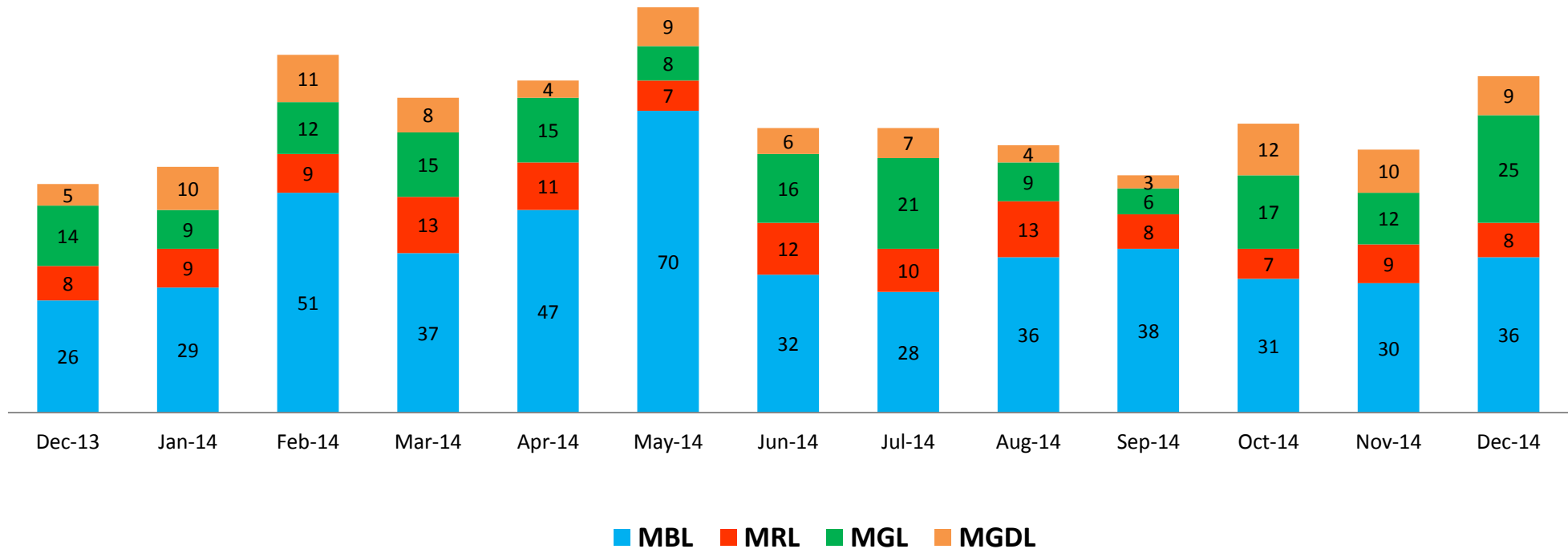
Metro Gold Line

Top Incident Categories



Major Incidents December 2013-2014

Numbers of Major System Failures (by Line)



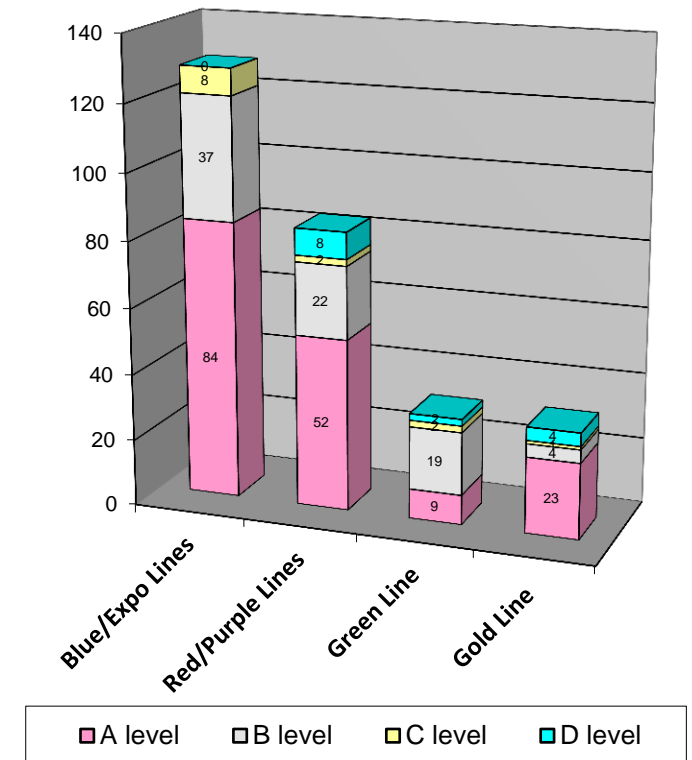
Preventive Maintenance Compliance

December 2013-2014

PM Compliance	Dec-13	Jan-14	Feb-14	Mar-14	Apr-14	May-14	Jun-14	Jul-14	Aug-14	Sep-14	Oct-14	Nov-14	Dec-14
Blue/Expo Lines	100%	100%	100%	100%	100%	100%	100%	100%	100%	100%	100%	100%	100%
Red/Purple Lines	100%	100%	100%	100%	100%	100%	100%	100%	100%	100%	100%	100%	100%
Green Line	100%	100%	100%	100%	100%	100%	97%*	100%	100%	100%	100%	97%	100%
Gold Line	100%	100%	100%	100%	100%	100%	100%	100%	100%	100%	100%	100%	100%

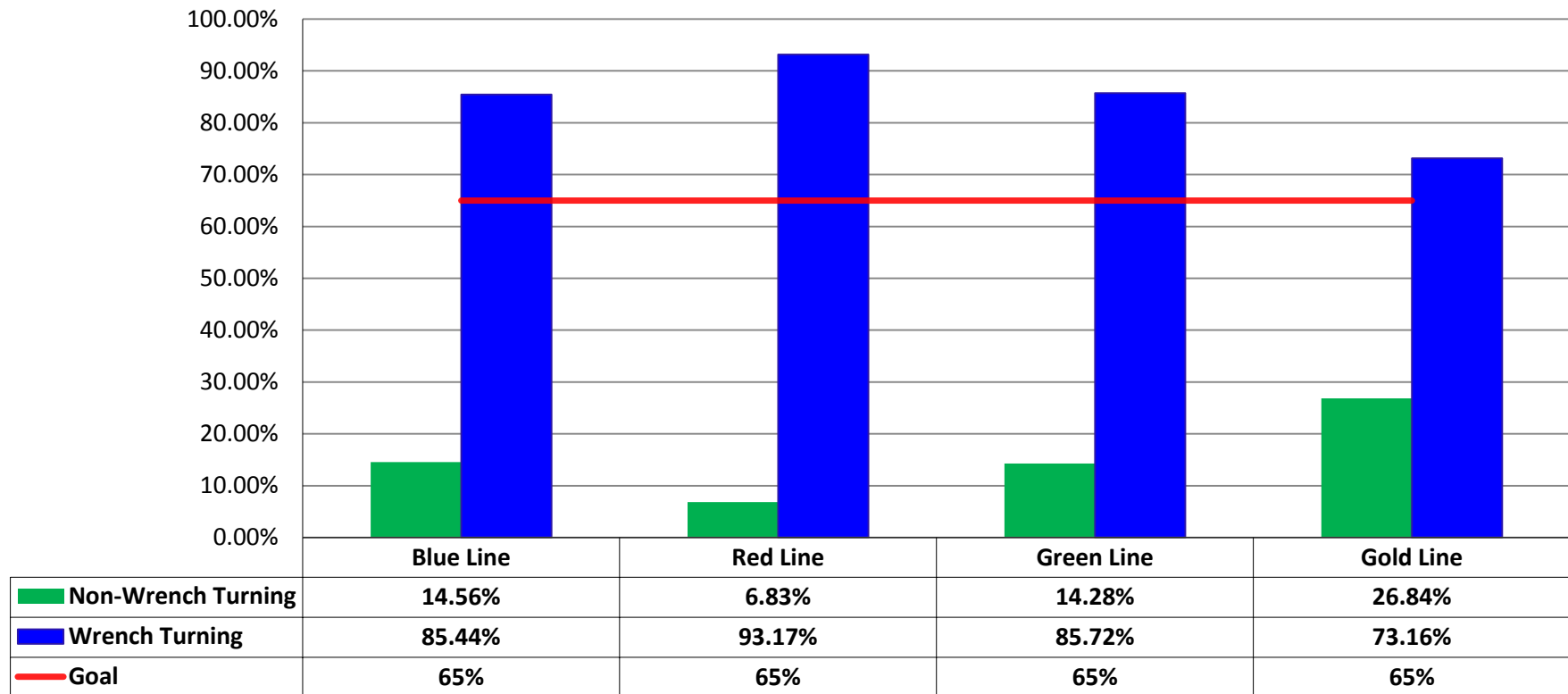
Number of Preventive Maintenance Inspections - December 2014					
Line	A level	B level	C level	D level	Totals
Blue/Expo Lines	84	37	8	0	129
Red/Purple Lines	52	22	2	8	84
Green Line	9	19	2	2	32
Gold Line	23	4	1	4	32
Totals:	168	82	13	14	277

Explanation of PM Inspection levels		Miles			
Line	Type	A level	B level	C level	D level
Blue/Expo Lines	P865/P2020	5,000	15,000	30,000	60,000
Blue/Expo Lines	P2000	7,500	22,500	45,000	90,000
Red/Purple Lines	A650	7,500	22,500	45,000	90,000
Green Line	P2000	7,500	22,500	45,000	90,000
Gold Line	P2550	10,000	30,000	60,000	120,000



RFS Wrench Turning December 2014

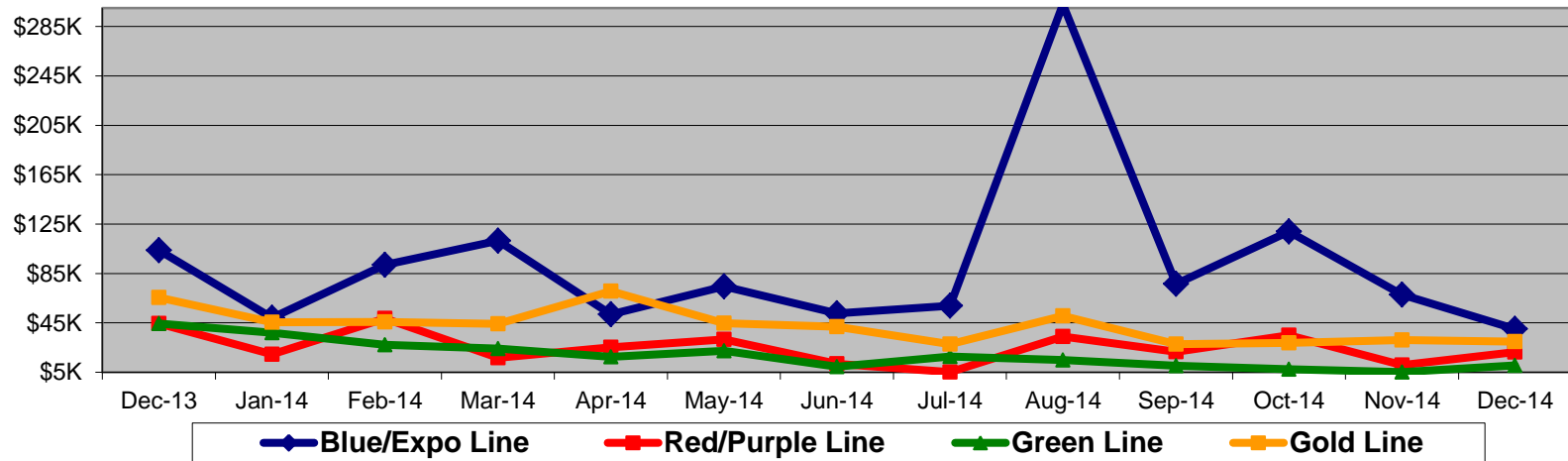
RFS - Wrench Turning December 2014



Vandalism & Graffiti Report

December 2013-2014

	Graffiti Costs														
	Dec-13	Jan-14	Feb-14	Mar-14	Apr-14	May-14	Jun-14	Jul-14	Aug-14	Sep-14	Oct-14	Nov-14	Dec-14	13-Month Period	
Blue/Expo Line	\$104K	\$49K	\$92K	\$112K	\$52K	\$75K	\$53K	\$59K	\$303K	\$77K	\$119K	\$68K	\$40K	\$1201K	
Red/Purple Line	\$44K	\$19K	\$49K	\$17K	\$25K	\$32K	\$12K	\$5K	\$34K	\$22K	\$35K	\$11K	\$21K	\$325K	
Green Line	\$44K	\$37K	\$27K	\$24K	\$17K	\$22K	\$9K	\$18K	\$15K	\$10K	\$8K	\$5K	\$10K	\$249K	
Gold Line	\$66K	\$46K	\$46K	\$44K	\$71K	\$45K	\$42K	\$28K	\$51K	\$28K	\$29K	\$31K	\$30K	\$554K	
Totals:	\$258K	\$151K	\$214K	\$197K	\$165K	\$173K	\$116K	\$110K	\$402K	\$136K	\$190K	\$115K	\$102K	\$2,329K	



December 2014 Vandalism & Graffiti - All Rail				
	Qty	Labor	Materials	Totals
Windows Replaced	31	\$ 8,757	\$ 7,398	\$ 16,155
Vandal Shields Replaced	656	\$ 18,697	\$ 12,534	\$ 31,231
Seats Cleaned	373	\$ 1,438	\$ -	\$ 1,438
Seats Inserts Replaced	175	\$ 5,898	\$ 8,639	\$ 14,537
Graffiti Removal - Other	788	\$ 24,296	\$ 840	\$ 25,136
Repainting Panels	181	\$ 11,403	\$ 1,641	\$ 13,044
Totals	2,204	\$ 70,489	\$ 31,052	\$ 101,541

Graffiti Pictures

December 2014

Blue Line



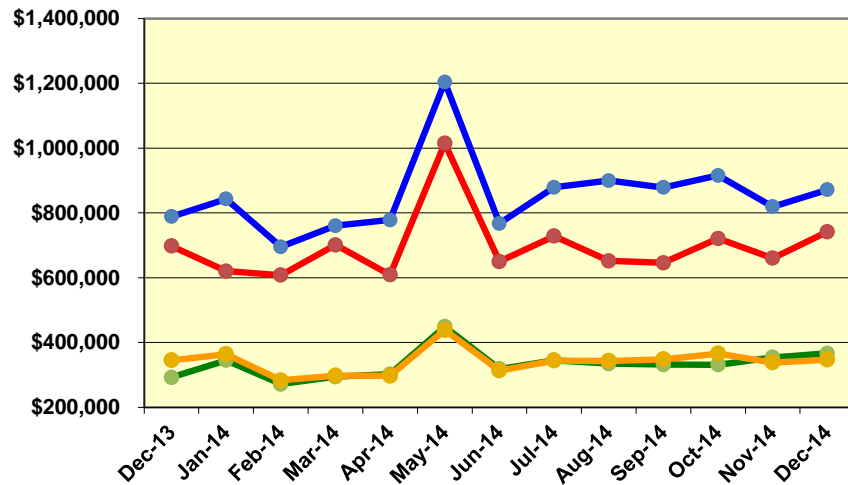
Gold Line



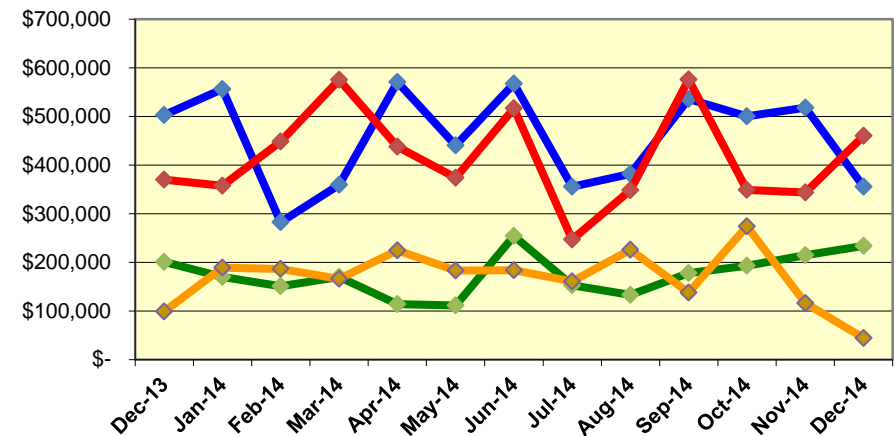
Labor and Material Costs

December 2013-2014

Labor Costs



Material Costs



Dec-13	Jan-14	Feb-14	Mar-14	Apr-14	May-14*	Jun-14	Jul-14	Aug-14	Sep-14	Oct-14	Nov-14	Dec-14
--------	--------	--------	--------	--------	---------	--------	--------	--------	--------	--------	--------	--------

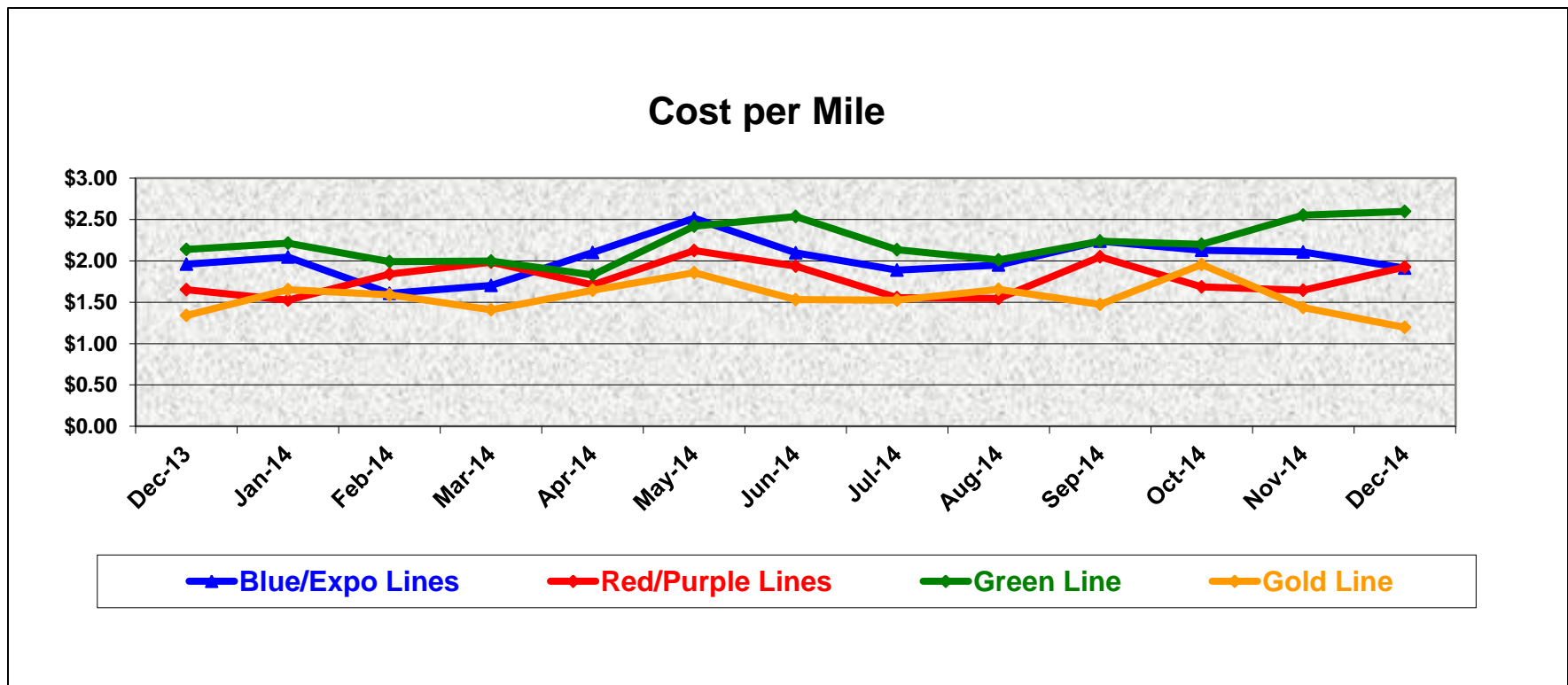
	Labor Cost												
Blue/Expo Lines	\$ 788,589	\$ 842,979	\$ 695,394	\$ 760,511	\$ 778,469	\$ 1,204,234	\$ 767,717	\$ 879,339	\$ 900,043	\$ 878,598	\$ 915,432	\$ 819,497	\$ 871,682
Red/Purple Lines	\$ 697,759	\$ 620,440	\$ 608,097	\$ 701,156	\$ 608,816	\$ 1,015,092	\$ 650,226	\$ 728,383	\$ 652,202	\$ 645,981	\$ 721,060	\$ 660,321	\$ 741,908
Green Line	\$ 292,482	\$ 345,262	\$ 271,877	\$ 294,381	\$ 302,213	\$ 449,117	\$ 318,516	\$ 345,270	\$ 334,772	\$ 331,870	\$ 331,661	\$ 354,058	\$ 366,422
Gold Line	\$ 345,170	\$ 363,886	\$ 283,563	\$ 298,069	\$ 297,634	\$ 438,759	\$ 313,589	\$ 344,331	\$ 343,246	\$ 348,288	\$ 366,248	\$ 338,610	\$ 347,182
Totals	\$ 2,123,999	\$ 2,172,567	\$ 1,858,931	\$ 2,054,117	\$ 1,987,132	\$ 3,107,202	\$ 2,050,048	\$ 2,297,323	\$ 2,230,262	\$ 2,204,736	\$ 2,334,400	\$ 2,172,486	\$ 2,327,193

	Material Cost												
Blue/Expo Lines	\$ 502,761	\$ 556,457	\$ 282,466	\$ 359,845	\$ 570,775	\$ 440,576	\$ 567,257	\$ 355,405	\$ 382,184	\$ 536,100	\$ 500,390	\$ 518,334	\$ 355,729
Red/Purple Lines	\$ 369,819	\$ 357,244	\$ 448,225	\$ 575,495	\$ 437,612	\$ 373,815	\$ 516,934	\$ 247,048	\$ 348,370	\$ 576,230	\$ 349,031	\$ 343,936	\$ 460,076
Green Line	\$ 201,035	\$ 169,759	\$ 150,881	\$ 170,250	\$ 113,979	\$ 111,344	\$ 254,264	\$ 153,001	\$ 133,386	\$ 178,206	\$ 193,176	\$ 214,902	\$ 234,118
Gold Line	\$ 99,267	\$ 189,310	\$ 186,640	\$ 166,216	\$ 224,430	\$ 183,115	\$ 183,869	\$ 160,751	\$ 225,818	\$ 137,883	\$ 274,059	\$ 116,179	\$ 44,498
Totals	\$ 1,172,883	\$ 1,272,769	\$ 1,068,212	\$ 1,271,807	\$ 1,346,796	\$ 1,108,849	\$ 1,522,323	\$ 916,204	\$ 1,089,759	\$ 1,428,418	\$ 1,316,657	\$ 1,193,351	\$ 1,094,420

Cost Per Mile

December 2013-2014

Cost per mile:	Dec-13	Jan-14	Feb-14	Mar-14	Apr-14	May-14	Jun-14	Jul-14	Aug-14	Sep-14	Oct-14	Nov-14	Dec-14
Blue/Expo Lines	\$1.96	\$2.05	\$1.61	\$1.70	\$2.10	\$2.52	\$2.10	\$1.89	\$1.95	\$2.24	\$2.13	\$2.11	\$1.91
Red/Purple Lines	\$1.65	\$1.52	\$1.84	\$1.98	\$1.71	\$2.13	\$1.93	\$1.55	\$1.54	\$2.05	\$1.68	\$1.64	\$1.92
Green Line	\$2.14	\$2.21	\$1.99	\$2.00	\$1.83	\$2.42	\$2.54	\$2.14	\$2.01	\$2.24	\$2.20	\$2.55	\$2.60
Gold Line	\$1.34	\$1.65	\$1.59	\$1.41	\$1.64	\$1.86	\$1.53	\$1.53	\$1.65	\$1.47	\$1.96	\$1.44	\$1.19



ATU Absences vs. Overtime

December 2014

ABSENCE TYPE and HOURS	3941 & 3947 Blue & Expo	3942 Red	3943 Green	3944 Gold	Total
AWP-ABSENT W/O PERMISSION	-	-	8	8	16
BER-BEREAVEMENT	48	40	-	-	88
CTO-COMPENSATORY TIME OFF	347	318	148	130	943
CUT-EMPLOYEE LEAVES EARLY	1	-	-	-	1
DSL-DISABILITY LEAVE/LONG	1,502	-	416	200	2,118
EFH-EMG. FLOAT HOL.	24	136	40	80	280
ETO-EXCUSED TIME OFF	74	46	10	44	174
FMI-FAM IND INJURY	-	24	64	-	88
FML-FAMILY CARE LEAVE	552	662	255	160	1,629
FMS-FAMILY LEAVE SICK	82	282	88	40	493
HLF-HOLIDAY FLOATING	360	416	96	156	1,028
HNP-HOLIDAY NOT PAID	19	-	8	24	51
HOL-HOLIDAY LEGAL	677	648	160	208	1,693
II-INDUSTRIAL INJURY	-	-	64	-	64
IIR-INDUS INJURY -REOCCUR.	-	184	-	-	184
LC1-LABOR CODE 233	168	196	16	128	508
LTI-OCCPIL/LONGTRM INJ LEAVE	312	-	-	40	352
OWP-OFF WITH PERMISSION	-	1	-	-	1
RTO-REQUESTED TIME OFF-NO PAY	45	-	-	-	45
SCK-SICK PAY	317	121	84	116	638
SCW-SICK WITHOUT PAY	87	16	116	40	259
TAR-TARDY	1	1	1	1	4
VAC-VACATION	1,212	1,560	600	854	4,226
VAS-VACATION WHILE SICK	54	-	-	-	54
Total Absence Hours	5,883	4,650	2,174	2,229	14,936
ATU Number of Work Force (assigned)	135	104	46	47	332
Full Work Force hours/month	23,396	18,023	7,972	8,145	57,536
Absence as a % of Work Force	25%	26%	27%	27%	26%

OVERTIME TYPE and HOURS	3941 & 3947 Blue & Expo	3942 Red	3943 Green	3944 Gold	Total
CTB-COMPENSATORY TIME TO BANK	166	183	74	45	468
OTP-PREM OVERTIME	4,932	4,311	2,319	1,248	12,810
WLO-Worked Lunch Overtime	182	215	90	40	526
Total Overtime Hours	5,279	4,709	2,483	1,332	13,803
Overtime as a % of Work Force	23%	26%	31%	16%	24%



Metro

Note: Overtime also covers other required activities, including Training, Component Overhaul, and Special Events.