



Rail Fleet Services Monthly Report January 2014



Metro

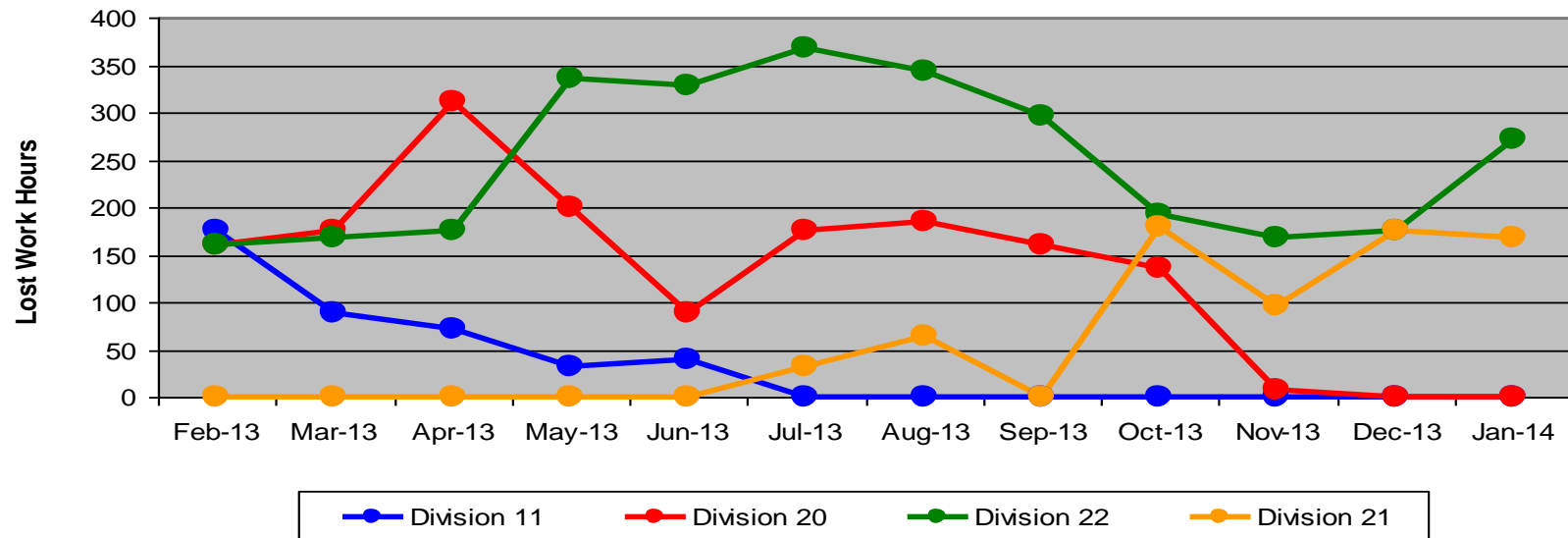
Table of Contents

•	Safety		
	- Industrial Injuries	Page	3
	- Rail Vehicle Accidents & Major Incidents	Page	4
•	Customer Service		
	- Service Delivery – AM/PM Pull-Outs	Page	5
	- Vehicle Utilization – Blue Line & Green Line	Page	6
	- Vehicle Utilization – Red Line & Gold Line	Page	7
	- All Train Delay Incidents	Page	8
	- Mean Miles Between Failures (Major)	Page	9
	- Mileage Between Data Range (by month)	Page	10
•	Business Processes		
	- Major Incidents	Page	11
	- Preventive Maintenance Compliance	Page	12
	- Wrench Turning	Page	13
•	Finance		
	- Vandalism & Graffiti Costs	Page	14
	- Graffiti Pictures	Page	15
	- Labor & Material Costs	Page	16
	- Cost per mile	Page	17
	- Absence vs. Overtime	Page	18
•	Engineering		
	- Rail Vehicle Engineering Project Summary	Page	19-22
•	Quality Assurance		
	- Warranty Program Projects Summary	Page	23
•	Growth		
	- RFS Instruction Department Activities	Page	24

Industrial Injuries – Lost Work Hours January 2014

	Feb-13	Mar-13	Apr-13	May-13	Jun-13	Jul-13	Aug-13	Sep-13	Oct-13	Nov-13	Dec-13	Jan-14	12-Month Period
Division 11	176	88	72	32	40	0	0	0	0	0	0	0	408
Division 20	160	176	312	200	88	176	184	160	136	8	0	0	1,600
Division 22	160	168	176	336	328	368	344	296	192	168	176	272	2,984
Division 21	0	0	0	0	0	32	64	0	180	96	176	168	716
Totals	496	432	560	568	456	576	592	456	508	272	352	440	5,708

Industrial Injuries (lost work hours)



Rail Vehicle Accidents & Major Incidents

January 2014

Repair Costs	Feb-13	Mar-13	Apr-13	May-13	Jun-13	Jul-13	Aug-13	Sep-13	Oct-13	Nov-13	Dec-13	Jan-14	12-Month Period
Blue/Expo Line	\$3,288	\$2,959	\$237,017	\$11,700	\$4,926	\$14,951	\$2,338	\$3,700	\$11,475	\$13,838	\$0	\$8,370	\$314,562
Red/Purple Line	\$0	\$0	\$4,165	\$0	\$0	\$0	\$1,358	\$0	\$0	\$0	\$0	\$0	\$5,523
Green Line	\$126	\$0	\$0	\$0	\$0	\$0	\$0	\$0	\$0	\$0	\$1,008	\$0	\$1,134
Gold Line	\$0	\$0	\$0	\$261	\$8,220	\$0	\$537	\$0	\$0	\$0	\$0	\$0	\$9,018
Totals	\$3,414	\$2,959	\$241,182	\$11,961	\$13,146	\$14,951	\$4,233	\$3,700	\$11,475	\$13,838	\$1,008	\$8,370	\$330,237

Rail Vehicle Accident Costs - January 2014				
Date	Incident #	Problem Code	Incident Description	Cost
Metro Blue Line				
1/17/14	2410540	Train vs. Vehicle	A 10-73 was reported at Intersection, Flower & Venice Track 2, Train 109.	\$ 3,885
1/23/14	2412872	Train vs. Vehicle	A 10-73 was reported, Track 2, Train 116.	\$ 4,485
Total				\$ 8,370
Metro Red Line				
1/7/14	2406590	Train vs. Object	A 10-71 was reported involving a trash can thrown onto the ROW and train making contact. Train 229, Pershing Square, Eastbound.	\$ -
Total				\$ -
Metro Green Line Yard				
1/15/14	2409697	Train vs. Object	Broken car wash brush entangled with pantograph.	\$ -
Total				\$ -
Metro Gold Line				
1/24/14	2413075	Train vs. Object	A 10-71 was reported involving Train 401 and shopping cart north of Ditman Track 1.	\$ -
Total				\$ -
Grand Total				\$ 8,370
(10-71) = Train vs. Object, (10-72) = Train vs. Pedestrian, (10-73) = Train vs. Vehicle (10-74) = Train vs. MTA Vehicle, (10-75) = Derailment				

Note: Repair costs are only the expenses captured during the time period of the report. Actual costs may be significantly higher, if repairs are spread out over several months.

Service Delivery January 2014

Blue/Expo Line Fleet Size: 92

<u>Pull Out</u>	<u>Vehicles Required</u>	<u>Average Available</u>	<u>% Up (Down)</u>
Weekday:	78	79	101%
Weekend:	60	64	107%
Late Pullouts: 0*			
Monthly Mileage:	684,092		

Red/Purple Line Fleet Size: 104

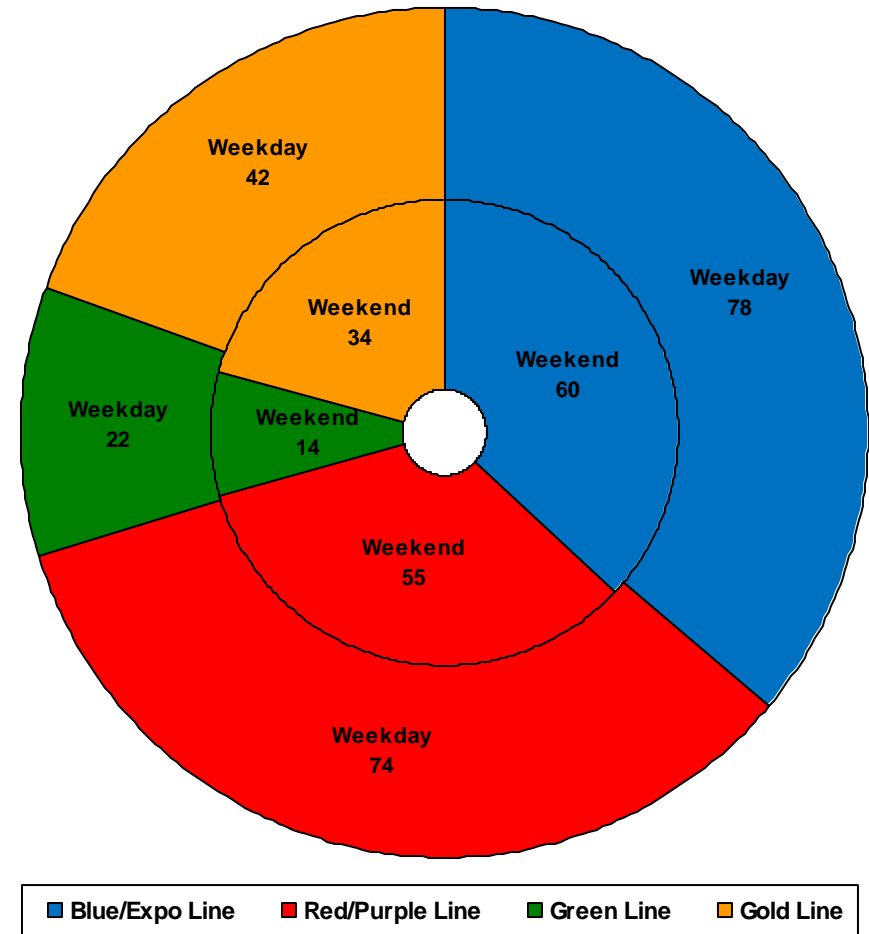
<u>Pull Out</u>	<u>Vehicles Required</u>	<u>Average Available</u>	<u>% Up (Down)</u>
Weekday:	74	83	112%
Weekend:	55	70	127%
Late Pullouts: 0*			
Monthly Mileage:	641,636		

Green Line Fleet Size: 29

<u>Pull Out</u>	<u>Vehicles Required</u>	<u>Average Available</u>	<u>% Up (Down)</u>
Weekday:	22	23	105%
Weekend:	14	17	121%
Late Pullouts: 0*			
Monthly Mileage:	232,704		

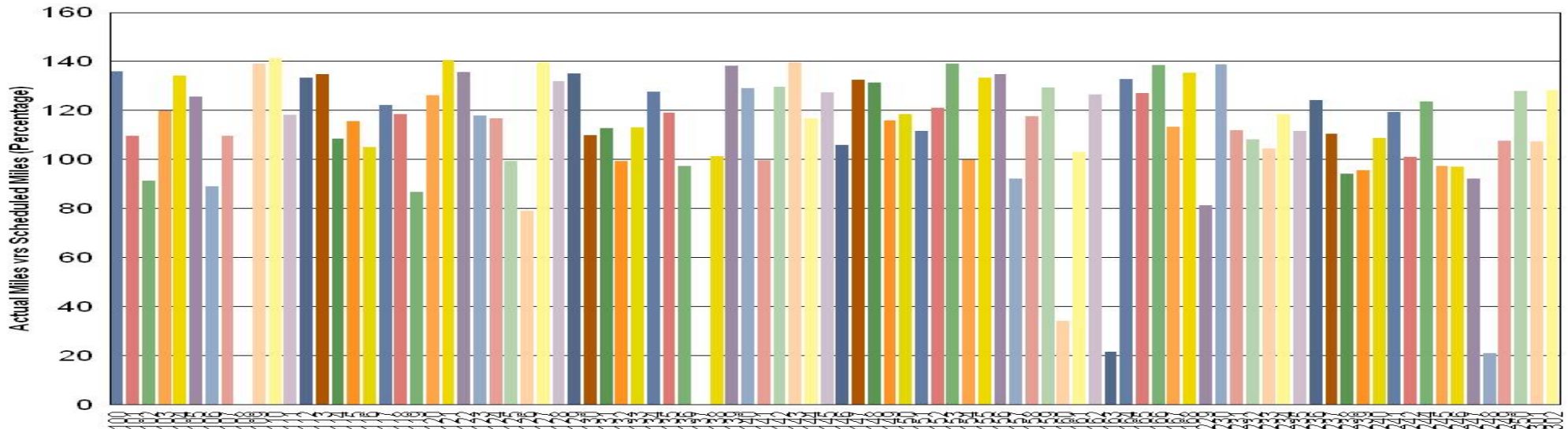
Gold Line Fleet Size: 50

<u>Pull Out</u>	<u>Vehicles Required</u>	<u>Average Available</u>	<u>% Up (Down)</u>
Weekday:	42	44	105%
Weekend:**	34	41	121%
Late Pullouts: 0*			
Monthly Mileage:	335,312		



Vehicle Utilization January 2014

Metro Blue/Expo Line



Blue/Expo Line:

The following cars are out of service due to:

Car # 108 Accident repair and AUX HSCB Overhaul

Car # 137 Major accident repair

Car # 160 60K Inspection, Graffiti window abatement and Truck work

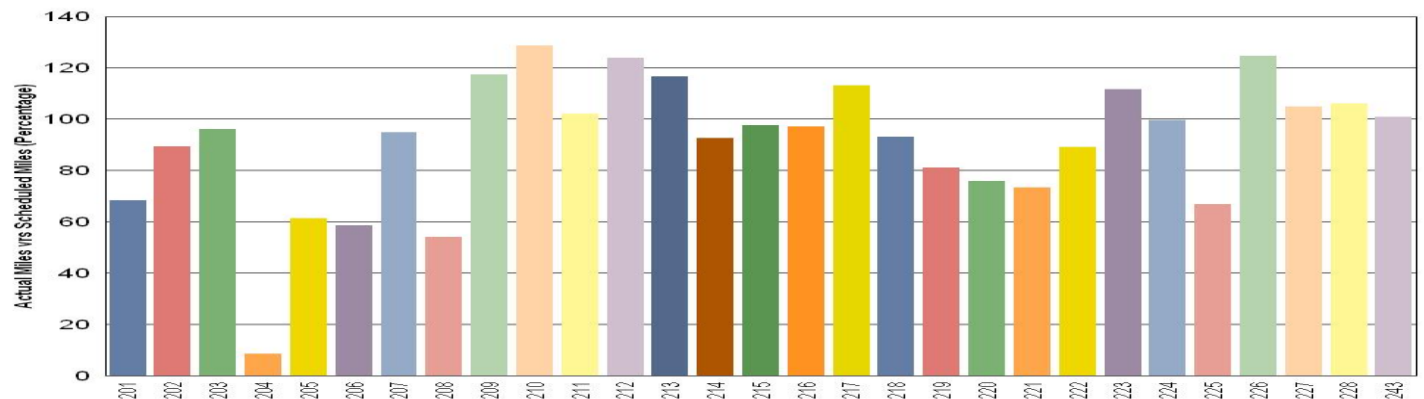
Car # 163 Unscheduled repairs and overhaul campaigns

Car # 248 Repeating failures and unscheduled repairs

Green Line:

Car # 204 Out of service for troubleshooting propulsion faults and multiple mainline test runs

Metro Green Line



Note: Percentage includes an average 4% mileage deduction for yard mileage and vehicle testing.

Vehicle Utilization January 2014

Red/Purple Line:

The following cars are out of service due to:

Car # 503-504 Propulsion fault and gearbox damage

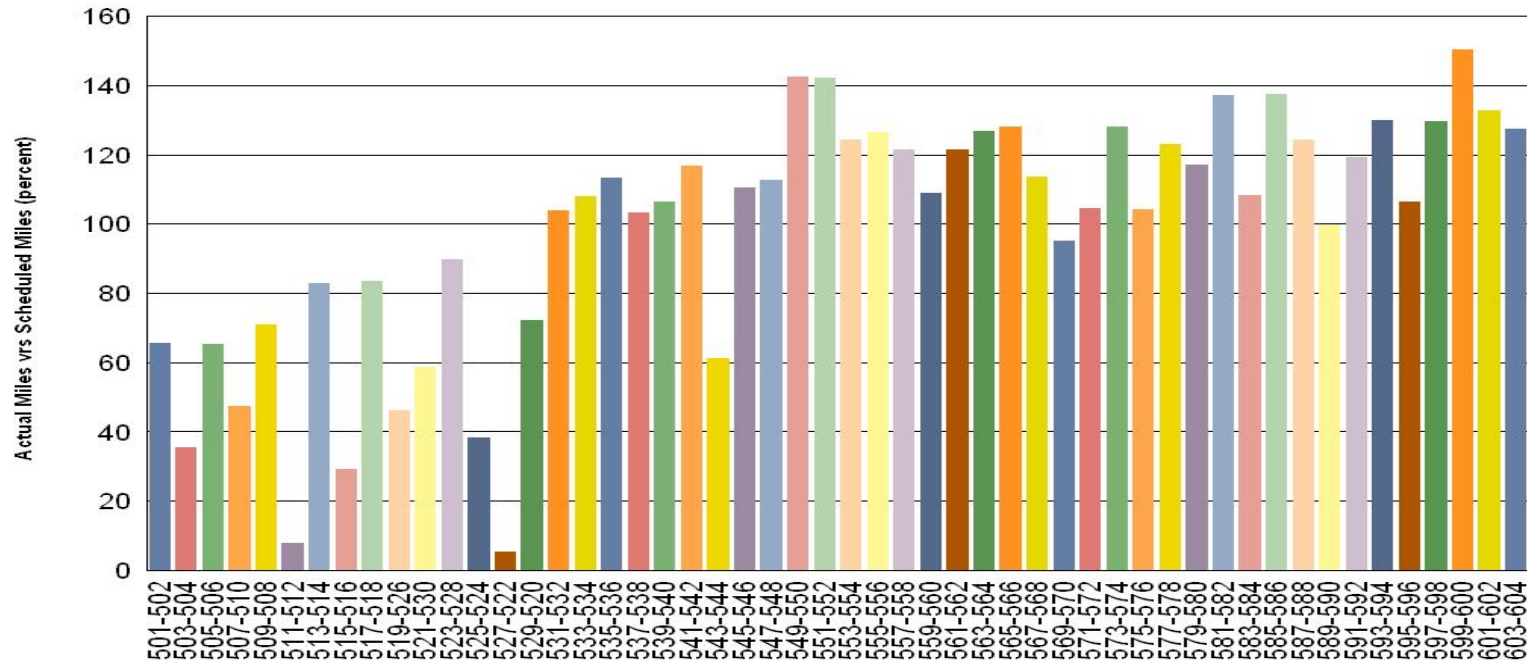
Car # 511-512 Floor Replacement Project

Car # 515-516 LVPS fault

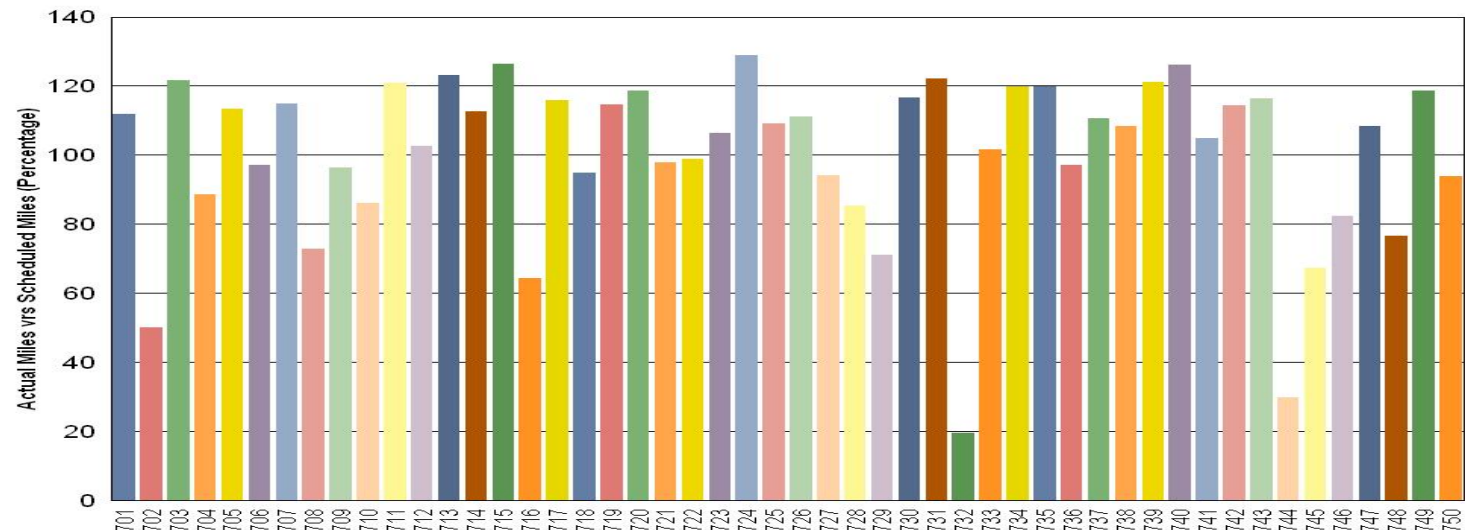
Car # 525-524 Propulsion fault

Car # 527-522 HVAC Servicing

Metro Red/Purple Line



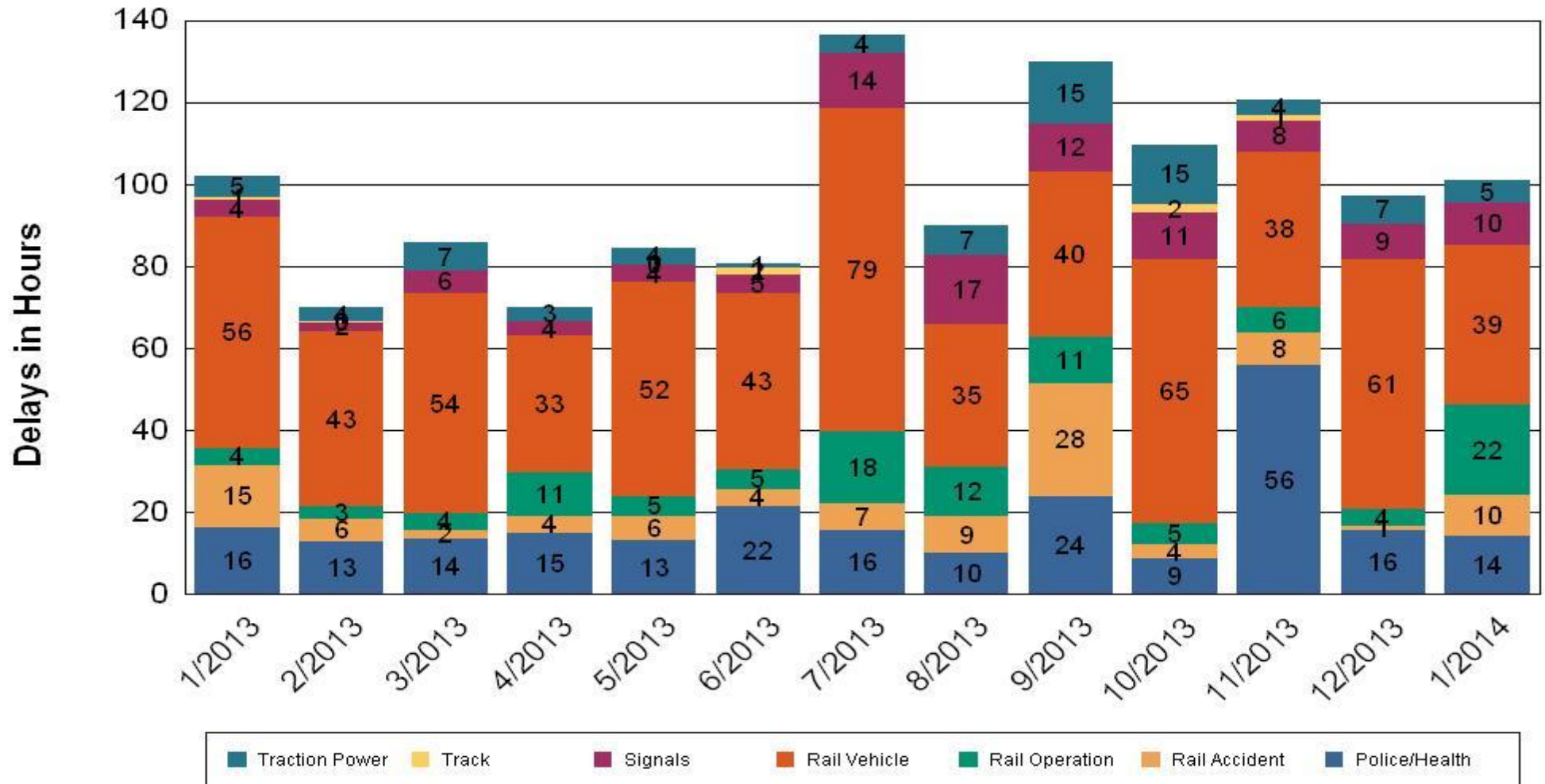
Metro Gold Line



All Train Delay Incidents January 2014

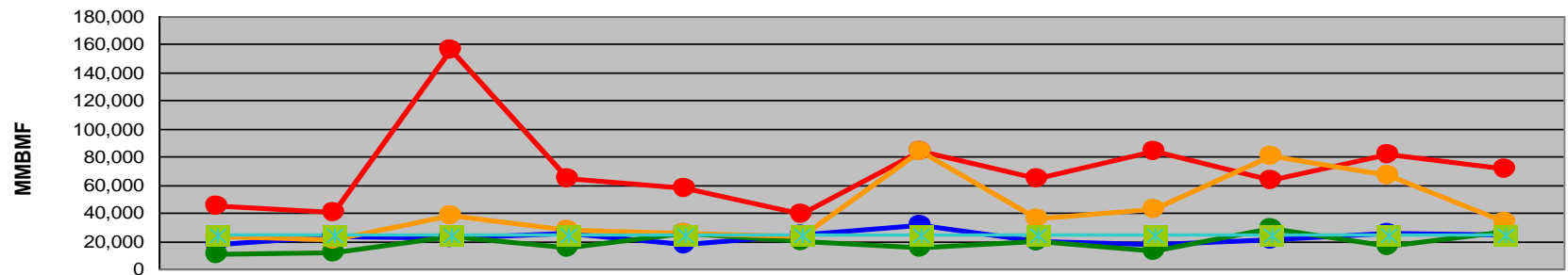
All Train Delays

Totals Include the delay to all trains involved (not just the primary incident)



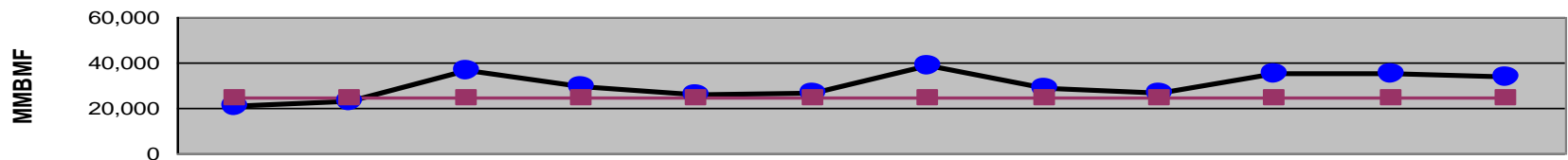
Mean Miles Between Failures (Major) Year to Date

Mean Miles Between Major Failures (by line)



	Feb-13	Mar-13	Apr-13	May-13	Jun-13	Jul-13	Aug-13	Sep-13	Oct-13	Nov-13	Dec-13	Jan-14
Blue/Expo Lines	17,418	23,226	21,992	25,783	17,082	23,591	30,773	19,332	17,764	21,123	25,328	23,589
Red/Purple Lines	44,509	39,694	155,798	63,886	56,770	39,539	83,229	63,847	83,821	63,627	80,905	71,293
Green Line	10,752	11,772	22,981	14,742	25,412	19,703	14,712	18,988	12,516	28,350	16,495	25,856
Gold Line	22,795	20,817	37,306	27,296	25,272	23,454	83,320	35,489	41,867	80,419	66,350	33,531
Goal	24,000	24,000	24,000	24,000	24,000	24,000	24,000	24,000	24,000	24,000	24,001	24,002

Mean Miles Between Major Failures (all)

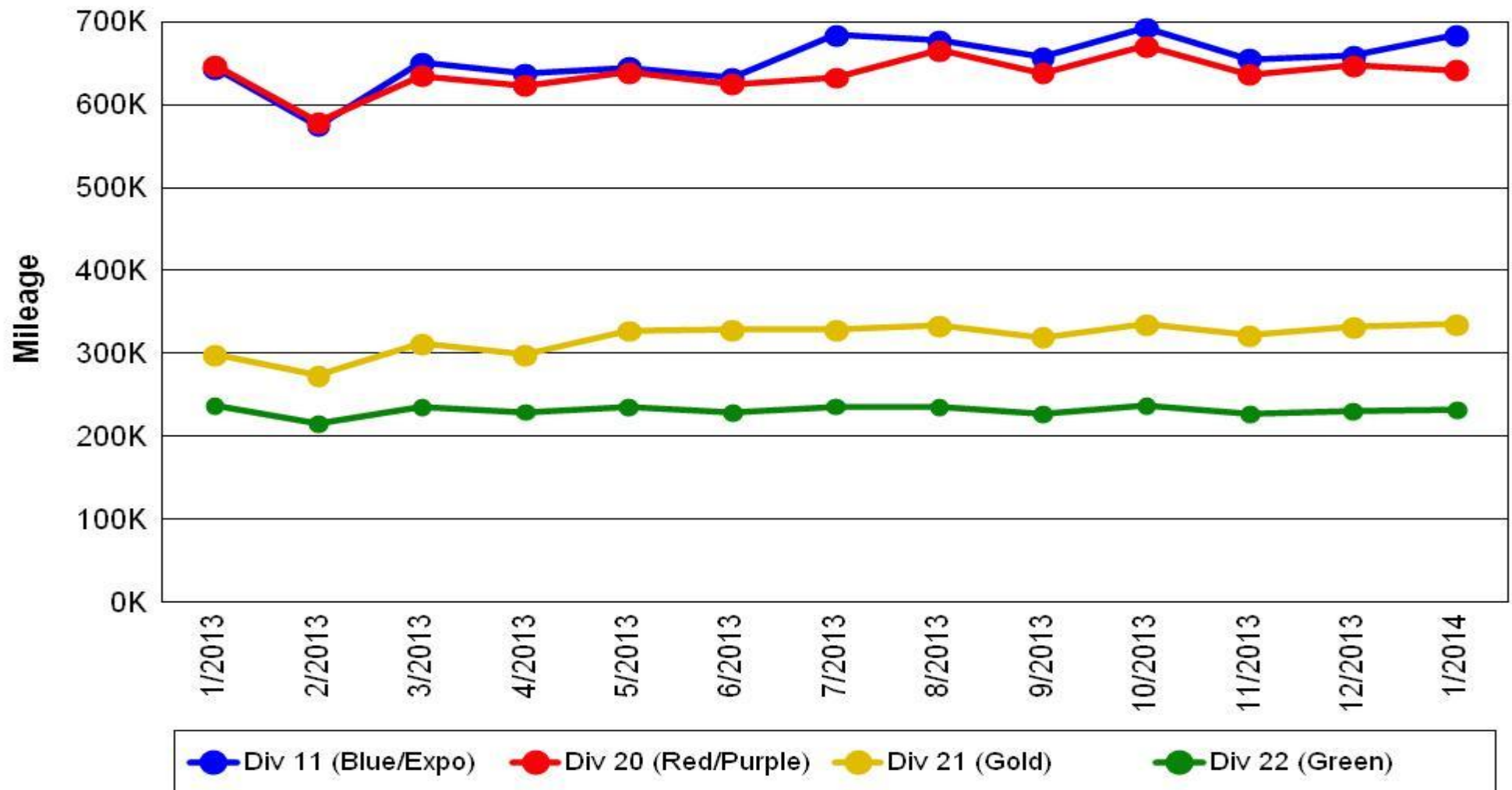


	Feb-13	Mar-13	Apr-13	May-13	Jun-13	Jul-13	Aug-13	Sep-13	Oct-13	Nov-13	Dec-13	Jan-14
All Rail	21,051	23,203	36,455	29,315	25,910	26,501	38,230	28,354	26,164	34,709	35,254	33,224
Goal	24,000	24,000	24,000	24,000	24,000	24,000	24,000	24,000	24,000	24,000	24,000	24,000

Mileage Between Data Range (by month)

January 2014

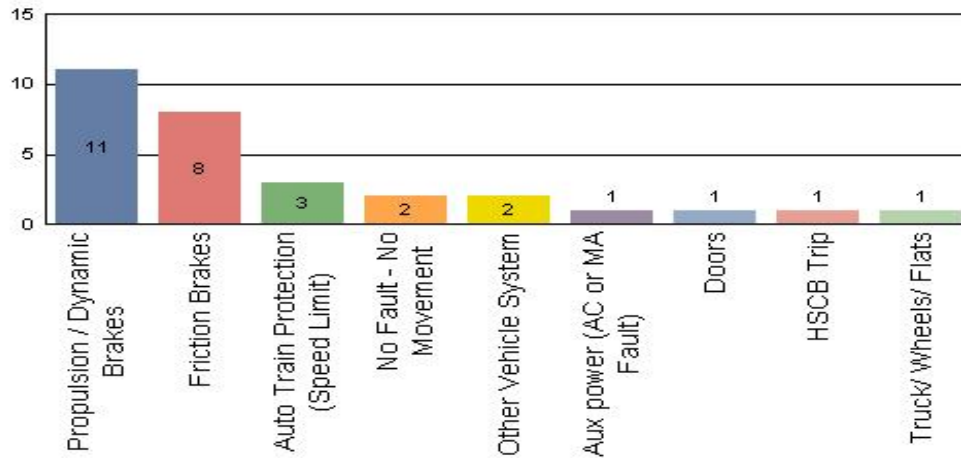
Rail Division Monthly Mileage



Major Incidents January 2014

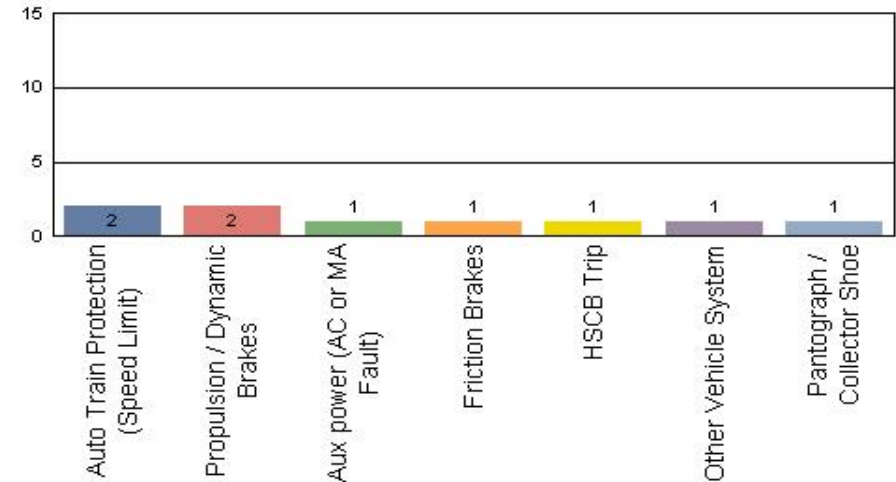
Metro Blue/Expo Line

Top Incident Categories



Metro Red/Purple Line

Top Incident Categories



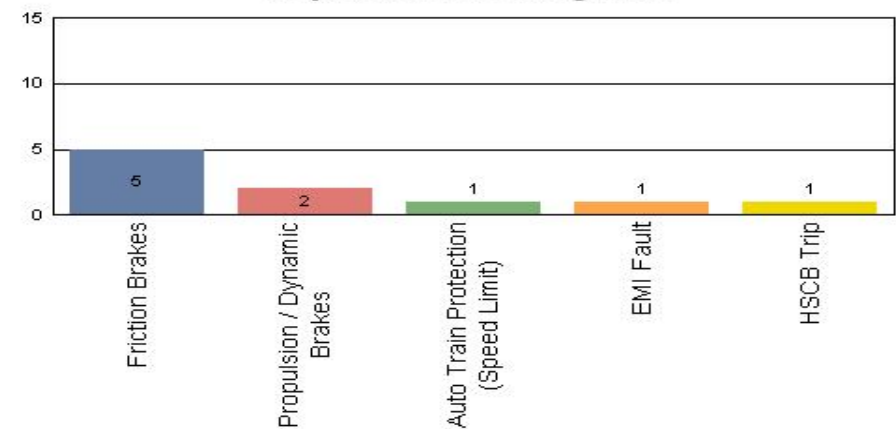
Metro Green Line

Top Incident Categories



Metro Gold Line

Top Incident Categories



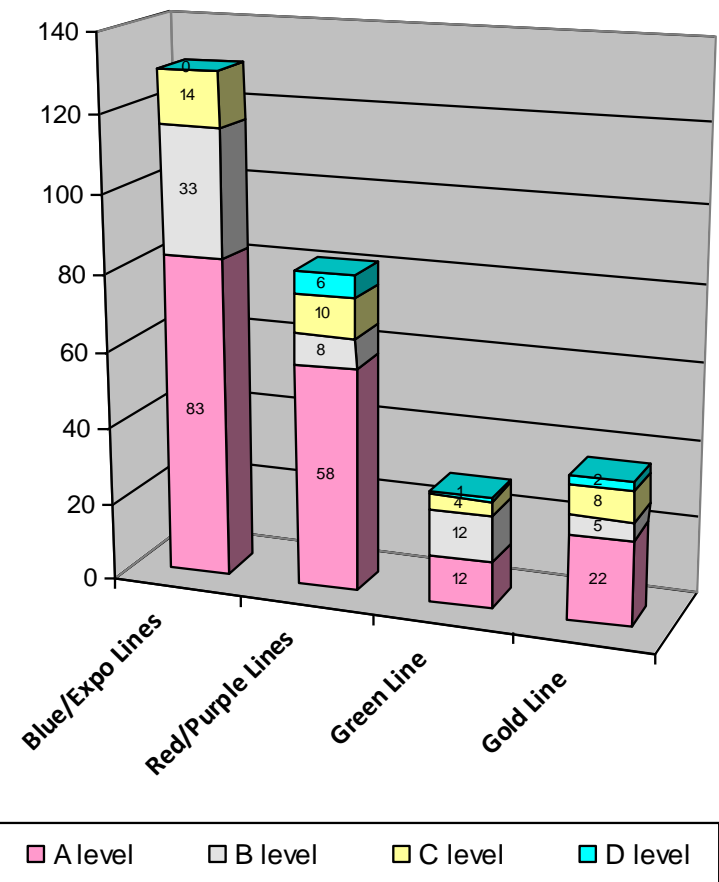
Preventive Maintenance Compliance

January 2014

PM Compliance	Jan-13	Feb-13	Mar-13	Apr-13	May-13	Jun-13	Jul-13	Aug-13	Sep-13	Oct-13	Nov-13	Dec-13	Jan-14
Blue/Expo Lines	99%	100%	100%	100%	100%	100%	100%	100%	100%	100%	100%	100%	100%
Red/Purple Lines	100%	100%	100%	100%	100%	100%	100%	100%	100%	100%	100%	100%	100%
Green Line	100%	100%	100%	100%	91%	100%	100%	100%	100%	96%	92%	100%	100%
Gold Line	100%	100%	100%	100%	100%	100%	100%	100%	100%	100%	100%	100%	100%

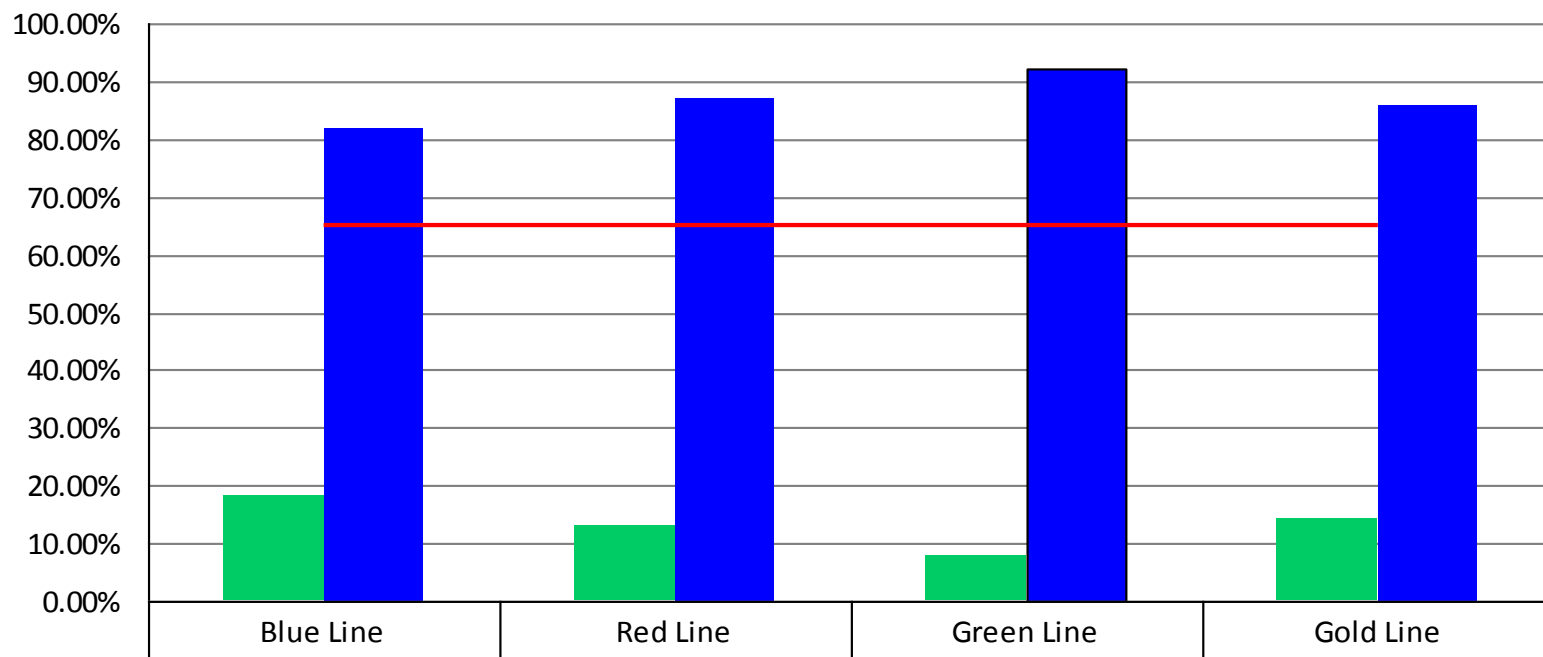
Number of Preventive Maintenance Inspections - January 2014					
Line	A level	B level	C level	D level	Totals
Blue/Expo Lines	83	33	14	0	130
Red/Purple Lines	58	8	10	6	82
Green Line	12	12	4	1	29
Gold Line	22	5	8	2	37
Totals:	175	58	36	9	278

Explanation of PM Inspection levels		Miles			
Line	Type	A level	B level	C level	D level
Blue/Expo Lines	P865/P2020	5,000	15,000	30,000	60,000
Blue/Expo Lines	P2000	7,500	22,500	45,000	90,000
Red/Purple Lines	A650	7,500	22,500	45,000	90,000
Green Line	P2000	7,500	22,500	45,000	90,000
Gold Line	P2550	10,000	30,000	60,000	120,000



RFS Wrench Turning January 2014

RFS - Wrench Turning January 2014



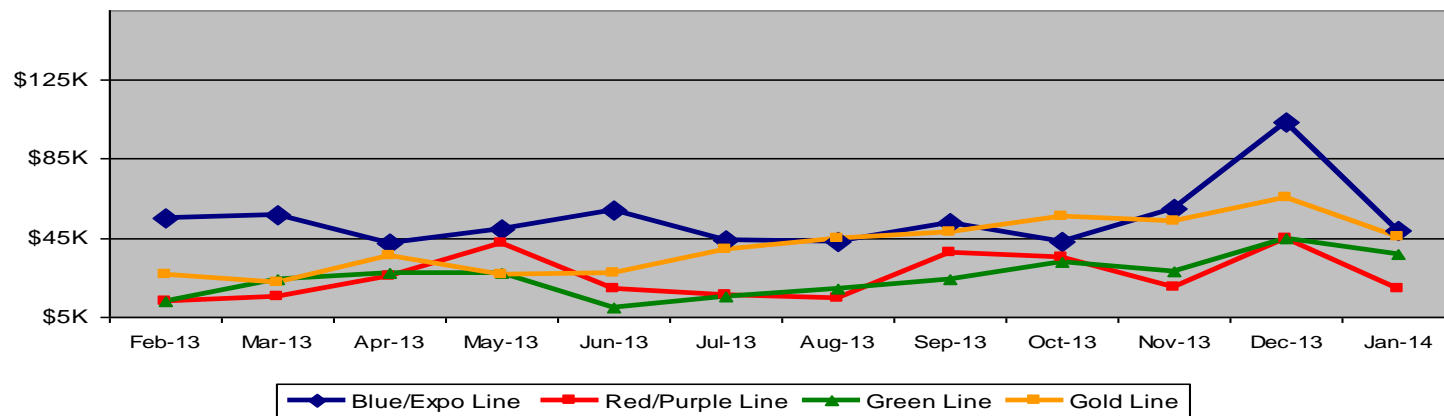
	Blue Line	Red Line	Green Line	Gold Line
Non-Wrench Turning	18.16%	12.89%	7.99%	13.95%
Wrench Turning	81.84%	87.11%	92.01%	86.05%
Goal	65%	65%	65%	65%

Vandalism & Graffiti Report

January 2014

Graffiti Costs

	Feb-13	Mar-13	Apr-13	May-13	Jun-13	Jul-13	Aug-13	Sep-13	Oct-13	Nov-13	Dec-13	Jan-14	12-Month Period
Blue/Expo Line	\$55K	\$57K	\$42K	\$49K	\$59K	\$44K	\$43K	\$53K	\$43K	\$60K	\$104K	\$49K	\$658K
Red/Purple Line	\$13K	\$15K	\$26K	\$42K	\$19K	\$16K	\$14K	\$37K	\$35K	\$20K	\$44K	\$19K	\$303K
Green Line	\$13K	\$24K	\$27K	\$28K	\$10K	\$15K	\$19K	\$24K	\$33K	\$28K	\$44K	\$37K	\$304K
Gold Line	\$26K	\$23K	\$36K	\$27K	\$27K	\$39K	\$44K	\$48K	\$56K	\$54K	\$66K	\$46K	\$491K
Totals:	\$108K	\$119K	\$131K	\$146K	\$116K	\$115K	\$121K	\$162K	\$167K	\$162K	\$258K	\$151K	\$1,755K



January 2014 Vandalism & Graffiti - All Rail				
	Qty	Labor	Materials	Totals
Windows replaced	176	\$22,932	\$33,894	\$56,826
Vandal Shields	449	\$13,556	\$6,308	\$19,864
Seats Cleaned	461	\$2,696	\$0	\$2,696
Seats Replaced	275	\$8,662	\$10,120	\$18,782
Graffiti removal - other	880	\$19,265	\$600	\$19,865
Repainting panels	330	\$22,534	\$10,524	\$33,058
Totals	2,571	\$89,645	\$61,446	\$151,091

Graffiti Pictures January 2014

Blue Line



Green Line



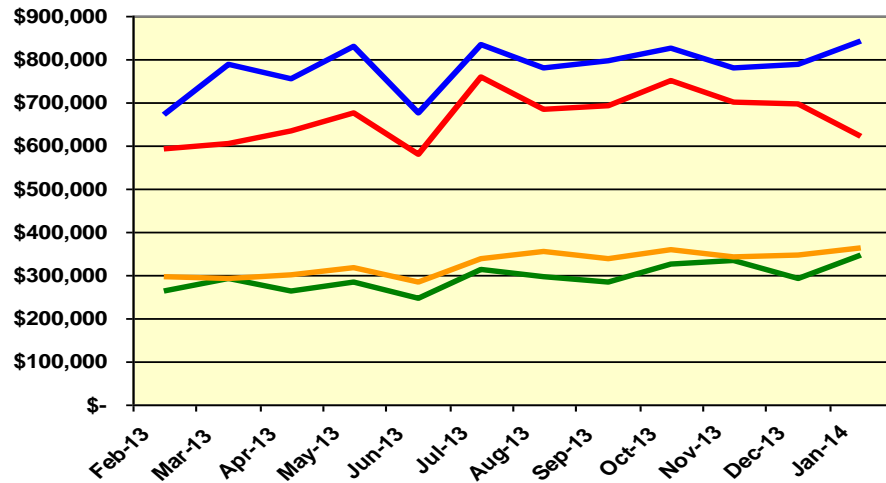
Gold Line



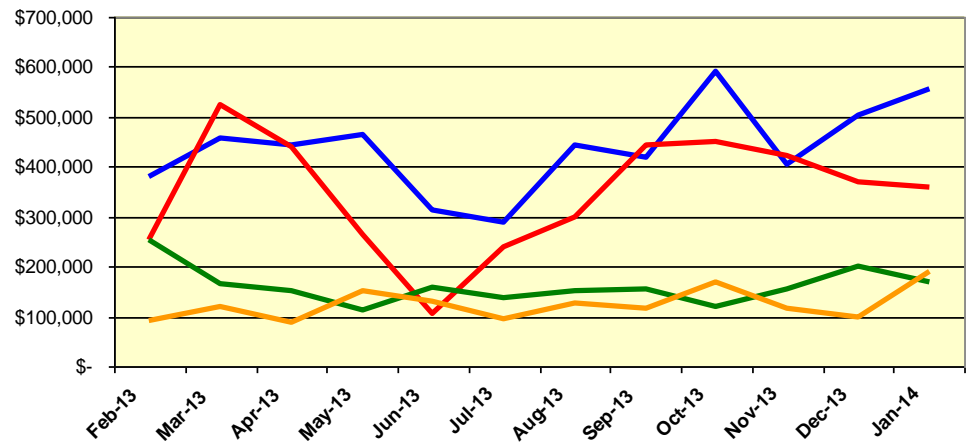
Labor and Material Costs

January 2014

Labor Costs



Material Costs



Feb-13	Mar-13	Apr-13	May-13	Jun-13	Jul-13	Aug-13	Sep-13	Oct-13	Nov-13	Dec-13	Jan-14
--------	--------	--------	--------	--------	--------	--------	--------	--------	--------	--------	--------

LABOR COSTS

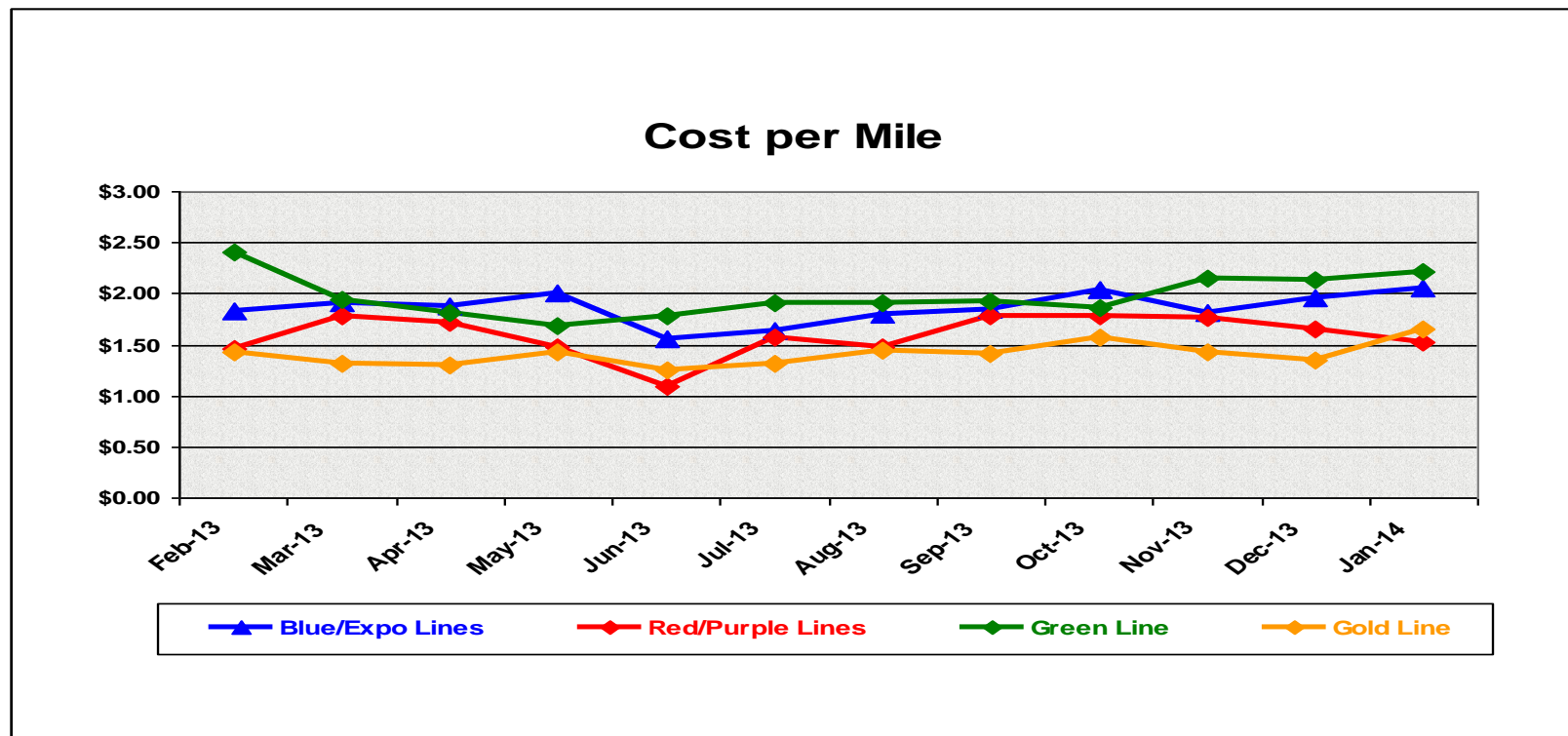
Blue/Expo Lines	\$ 671,298	\$ 788,111	\$ 755,561	\$ 829,721	\$ 675,752	\$ 833,333	\$ 777,432	\$ 794,828	\$ 826,769	\$ 780,678	\$ 788,589	\$ 842,979
Red/Purple Lines	\$ 590,750	\$ 605,903	\$ 631,518	\$ 675,950	\$ 579,395	\$ 756,262	\$ 684,850	\$ 693,597	\$ 750,452	\$ 700,975	\$ 697,759	\$ 620,440
Green Line	\$ 261,863	\$ 289,639	\$ 263,955	\$ 282,841	\$ 247,129	\$ 312,740	\$ 295,374	\$ 284,105	\$ 323,749	\$ 332,737	\$ 292,482	\$ 345,262
Gold Line	\$ 297,422	\$ 292,452	\$ 298,759	\$ 317,387	\$ 282,541	\$ 338,719	\$ 352,473	\$ 336,795	\$ 357,408	\$ 343,700	\$ 345,170	\$ 363,886
Totals	\$ 1,821,333	\$ 1,976,105	\$ 1,949,793	\$ 2,105,899	\$ 1,784,817	\$ 2,241,054	\$ 2,110,129	\$ 2,109,325	\$ 2,258,378	\$ 2,158,090	\$ 2,123,999	\$ 2,172,567

MATERIAL COSTS

Blue/Expo Lines	\$ 379,796	\$ 457,700	\$ 444,569	\$ 463,311	\$ 311,415	\$ 288,894	\$ 442,803	\$ 419,133	\$ 589,324	\$ 406,032	\$ 502,761	\$ 556,457
Red/Purple Lines	\$ 254,026	\$ 522,856	\$ 440,708	\$ 263,158	\$ 105,805	\$ 238,207	\$ 298,670	\$ 441,927	\$ 449,033	\$ 422,849	\$ 369,819	\$ 357,244
Green Line	\$ 254,286	\$ 166,766	\$ 151,982	\$ 114,311	\$ 159,526	\$ 138,190	\$ 152,243	\$ 154,678	\$ 119,411	\$ 154,582	\$ 201,035	\$ 169,759
Gold Line	\$ 91,890	\$ 120,086	\$ 89,212	\$ 149,564	\$ 129,742	\$ 95,664	\$ 126,942	\$ 114,461	\$ 167,128	\$ 116,167	\$ 99,267	\$ 189,310
Totals	\$ 979,998	\$ 1,267,408	\$ 1,126,471	\$ 990,344	\$ 706,488	\$ 760,956	\$ 1,020,659	\$ 1,130,199	\$ 1,324,896	\$ 1,099,631	\$ 1,172,883	\$ 1,272,769

Cost Per Mile January 2014

Cost per mile:	Feb-13	Mar-13	Apr-13	May-13	Jun-13	Jul-13	Aug-13	Sep-13	Oct-13	Nov-13	Dec-13	Jan-14
Blue/Expo Lines	\$1.83	\$1.92	\$1.88	\$2.01	\$1.56	\$1.64	\$1.80	\$1.85	\$2.04	\$1.81	\$1.96	\$2.05
Red/Purple Lines	\$1.46	\$1.78	\$1.72	\$1.47	\$1.10	\$1.57	\$1.48	\$1.78	\$1.79	\$1.77	\$1.65	\$1.52
Green Line	\$2.40	\$1.94	\$1.81	\$1.68	\$1.78	\$1.91	\$1.90	\$1.93	\$1.86	\$2.15	\$2.14	\$2.21
Gold Line	\$1.42	\$1.32	\$1.30	\$1.43	\$1.25	\$1.32	\$1.44	\$1.41	\$1.57	\$1.43	\$1.34	\$1.65



ATU Absences vs. Overtime

January 2014

ABSENCE TYPE and HOURS	3940 Admin.	3941 Blue	3942 Red	3943 Green	3944 Gold	3947 Expo	Total
AWP-ABSENT W/O PERMISSION	-	-	-	1	-	-	1
BER-BEREAVEMENT	-	64	40	40	-	-	144
CTO-COMPENSATORY TIME OFF	36	299	308	135	112	65	955
CUT-EMPLOYEE LEAVES EARLY	-	0	2	-	-	-	2
CVA - CASUAL VACATION	8	100	368	94	120	-	690
DSL-DISABILITY LEAVE/LONG	-	480	168	168	8	-	824
EFH-EMG. FLOAT HOL.	-	56	32	24	8	-	120
ETO-EXCUSED TIME OFF	1	52	48	23	59	2	185
FMI-FAM IND INJURY	-	56	-	8	-	-	64
FML-FAMILY CARE LEAVE	80	544	855	288	176	-	1,942
FMS-FAMILY LEAVE SICK	36	152	318	80	-	-	586
HLF-HOLIDAY FLOATING	-	264	220	104	104	-	692
HNP-HOLIDAY NOT PAID	-	-	8	-	-	-	8
HOL-HOLIDAY LEGAL	64	480	504	128	88	24	1,288
JUR-JURY DUTY	-	8	-	8	-	-	16
LC1-LABOR CODE 233	16	288	246	138	180	-	867
LTI-OCCPIL/LONGTRM INJ LEAVE	-	-	-	272	168	-	440
OWP-OFF WITH PERMISSION	-	-	4	-	1	-	5
RTO-REQUESTED TIME OFF-NO PAY	-	96	-	4	-	6	106
SCK-SICK PAY	16	176	192	132	40	-	556
SCW-SICK WITHOUT PAY	-	310	104	64	8	-	486
TAR-TARDY	0	3	0	1	1	-	6
VAC-VACATION	76	464	732	248	252	9	1,781
Total Absence Hours	334	3,893	4,148	1,959	1,325	106	11,765
ATU Number of Work Force (assigned)	8	120	112	47	47	5	339
Full Work Force hours/month	1,386	20,796	19,410	8,145	8,145	867	58,749
Absence as a % of Work Force	24%	19%	21%	24%	16%	12%	20%

OVERTIME TYPE and HOURS	3940 Admin.	3941 Blue	3942 Red	3943 Green	3944 Gold	3947 Expo	Total
CTB-COMPENSATORY TIME TO BANK	9	136	94	37	74	42	392
OTP-PREM OVERTIME	586	5,729	4,578	2,258	1,761	210	15,122
WLO-Worked Lunch Overtime	25	153	211	140	102	6	637
Total Overtime Hours	620	6,018	4,882	2,435	1,937	258	16,151
Overtime as a % of Work Force	45%	29%	25%	30%	24%	30%	27%
FTE Calculation - Absence & OT Hours	3940	3941	3942	3943	3944	3947	Total
Absences FTE	2	22	24	11	8	1	68
OTP FTE	4	35	28	14	11	1	93
FTE Difference	-2	-13	-4	-3	-3	0	-25

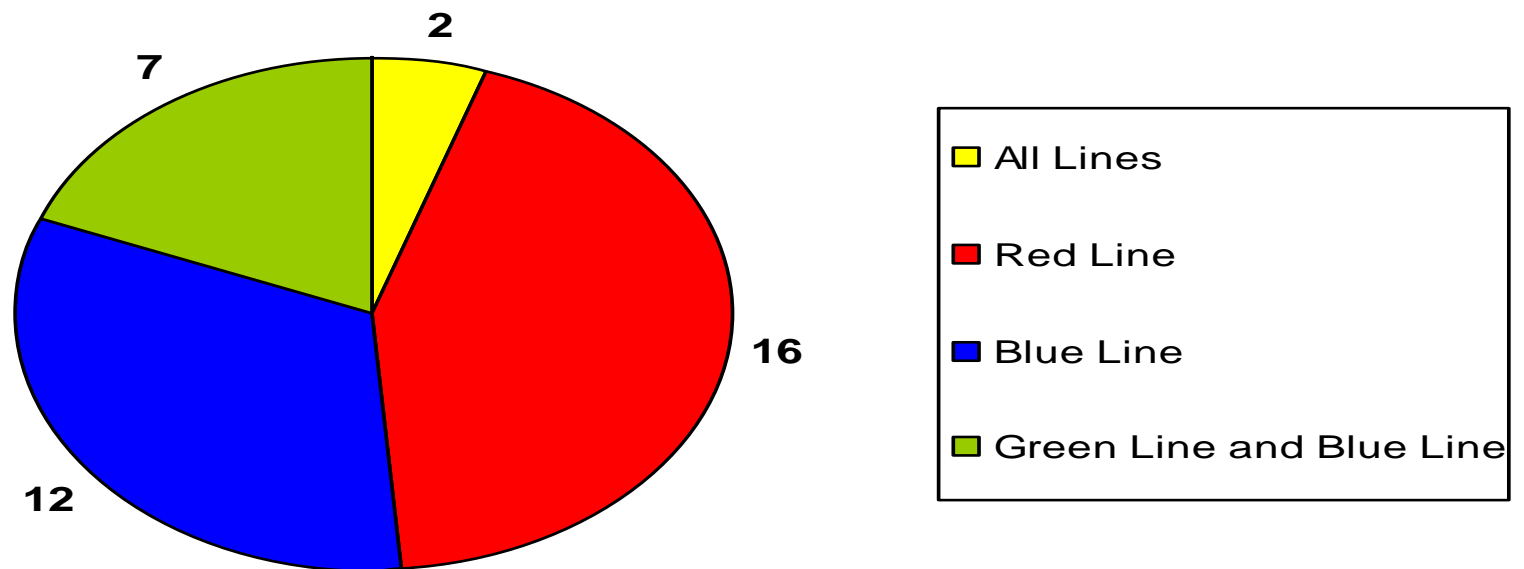
Rail Vehicle Engineering Project Summary

January 2014

Engineering Technical Specifications

100% Completion - Total of 37

January 2014

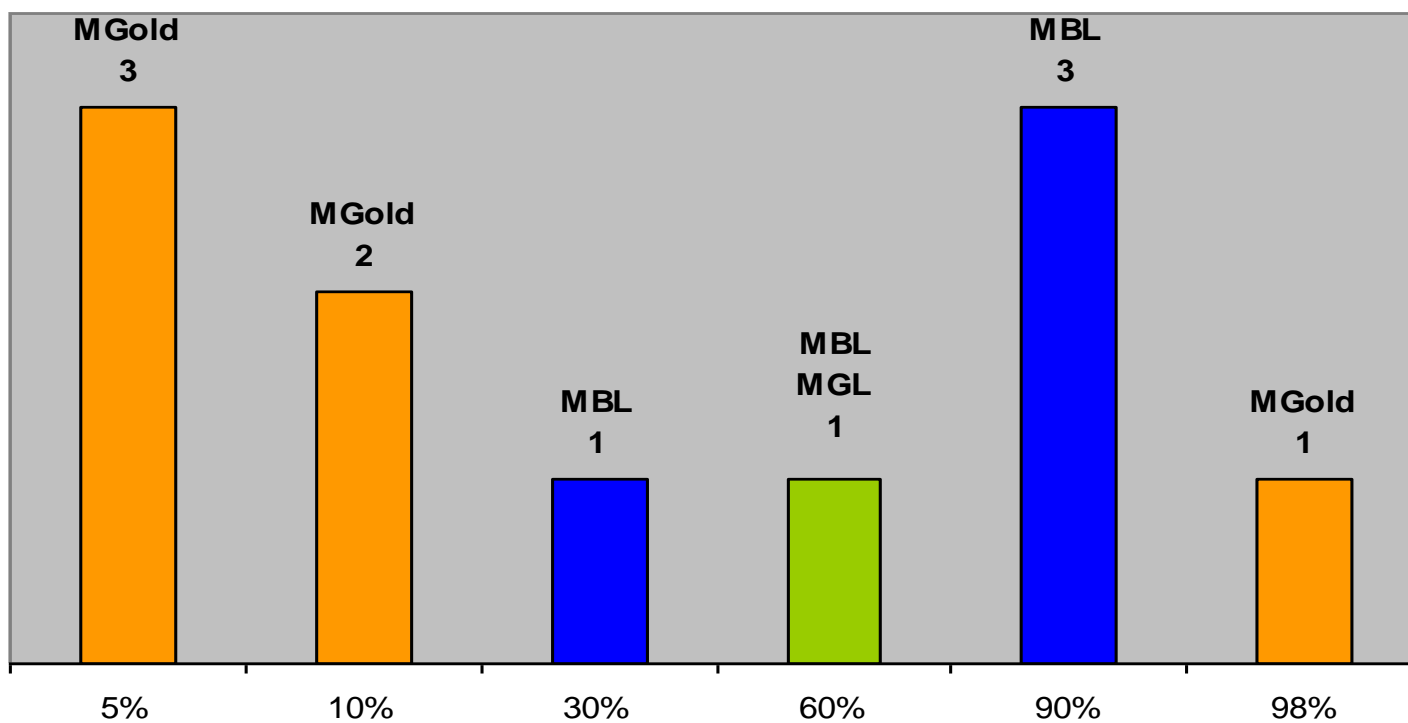


Details of specifications are available upon request.

Rail Vehicle Engineering Project Summary (cont'd)

January 2014

Engineering Technical Specifications Less than 100% Completion - Total of 11 January 2014

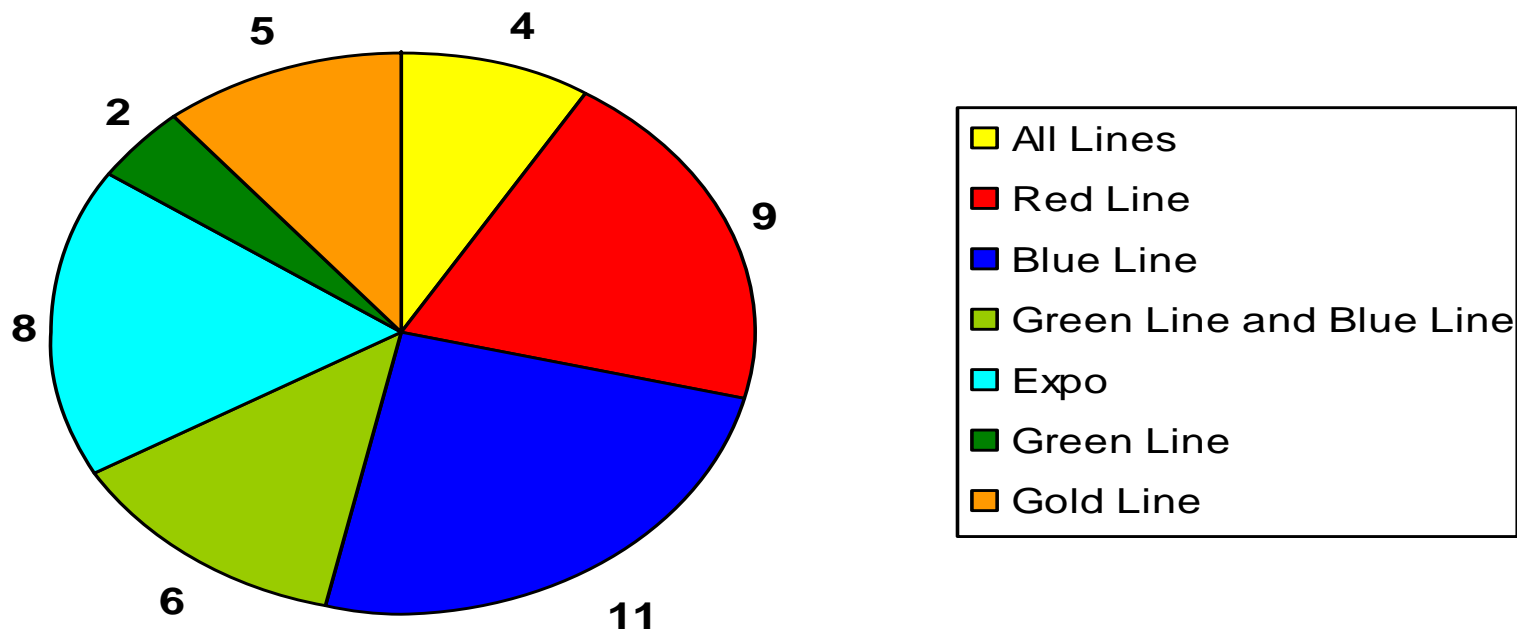


Details of specifications are available upon request.

Rail Vehicle Engineering Project Summary (cont'd)

January 2014

Engineering Projects 100% Completion - Total of 45 January 2014

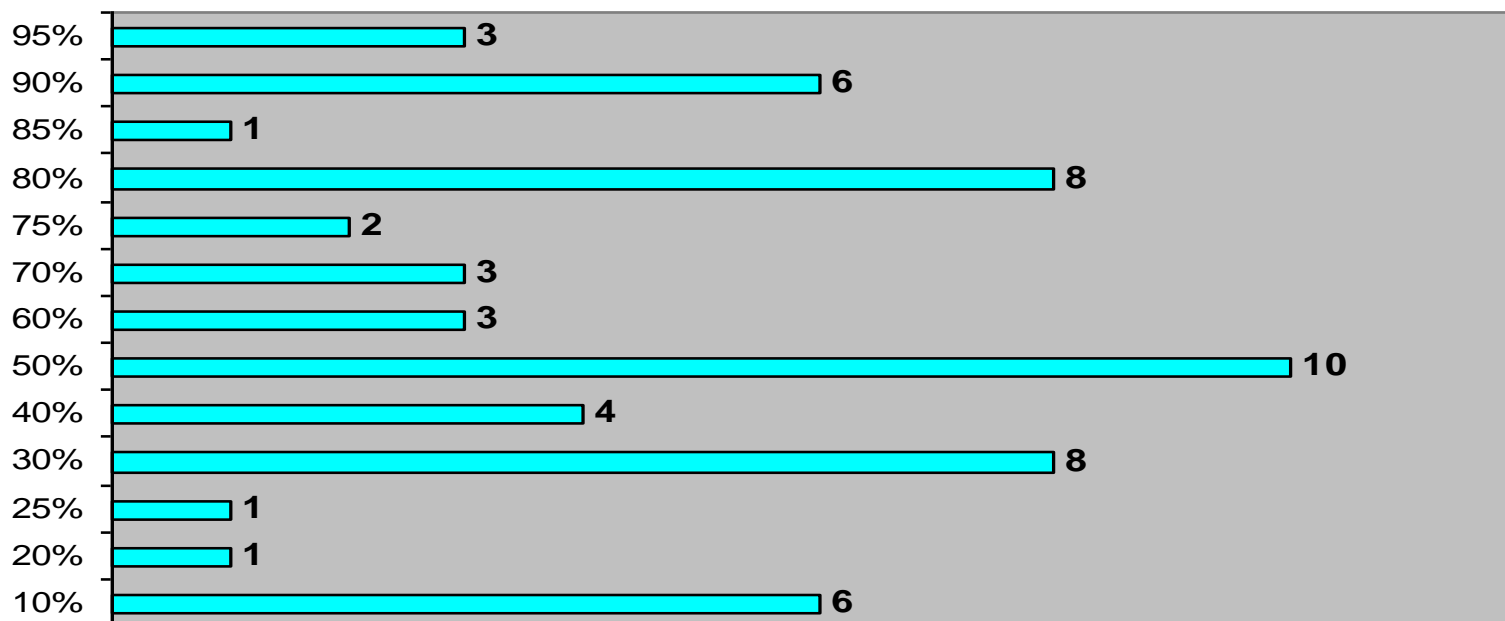


Details of projects are available upon request.

Rail Vehicle Engineering Project Summary (cont'd)

January 2014

Engineering Projects Less than 100% Completion - Total of 56 - All Lines January 2014



Details of projects are available upon request.

QA-Warranty Activities

January 2014

- QA PMI Audits, Spot Checks, Unannounced Audits performed (42)
- On-Going, P2550 parts tracking: Contract Spares, Capital Spares status to ABI
- P2550 Loaned Parts – 35 line items
- On-Going, Division Warranty Parts Claims Processing
- P2550 Traction Motor Junction Box Overheated lugs repairs in progress
- P2550 Support of analog converter valves
- P2550 (Lamellar Seal) Truck Resilient Pin Bushing fleet failure declared (Action pending ABI)
- P2550 40 of 50 Cars have new profile connection beam installed. 13 of 50 Cars with replacement resilient pins and bushings and connection beam.
- A650 Base Buy & Option Car Fleet Warranty Truck Frame Mod Campaign (151 of 216 Trucks modified to date). MRL Warranty Cost Avoidance savings accrued to date \$2.26 million.
- MBL SmartDrive test installation of 25 vehicles complete
- MBL journal bearing replacement “C” truck program in progress
- MBL LED Destination sign program in progress
- MBL/MGL Support of P2000 Air Compressor/ Air dryer
- On-Going Warranty-QA interest oversight & tracking: Overhauls / Mod Programs, (A650/P2000/P2020/865/P2550) Propulsion System, Master Controllers, Capacitor Banks, Air Compressors, Aux Power, Couplers, Gearboxes, Articulation Diaphragms, Friction Brakes, HPT's, Brake Resistor Grids, T/M's, MA's, HVAC, Doors, A/C Motors – (Blowers & Evaporators)

RFS Instruction Department Activities

January 2014

Training classes completed during the month of January 2014

Description	Course Hours	Student Count	Training Hours
Blue & Expo Line Training - (P865/2020 & P2000 LRV):			
RFS PROTRAN1 TRAINING	1	5	5
WAYSIDE WORKER PROTECTION	4	3	12
RFS 865/2020 M.A. & LVPS	52	7	364
RFS 865/2020 ATP & TWC	48	7	336
RFS 865/2020 FRICTION BRAKES	32	1	32

Total Blue Line Training (Hours): 749

Red Line Training (Breda A650 HRV):

RFS BRED A 650 TRUCKS & CAR BODY	24	8	192
RFS BRED A 650 LIGHT & DEST SIGN	8	7	56
RFS BRED A 650 TICU	16	8	128
RFS BRED A 650 COMMUNICATIONS	12	8	96

Total Red Line Training (Hours): 472

Gold Line Training (P2550 LRVs):

RFS ANSALDOBREDA 2550 EVENT RECORDER	16	21	336
--------------------------------------	----	----	-----

Total Gold Line Training (Hours): 336

Total RFS Instruction for the month of January 2014 (Hours): 1,557

Other Instruction Activities

Instructor Vacation & Holidays	112
P865/P2020 Vehicle Course Preparation	32
A650 Vehicle Course Preparation	24
P2550 Vehicle Course Preparation	32
Hegenschiedt Wheel Lathe Powerpoint & Lesson Plan	72
Event Recorder & Brandt Truck Class Preparation	24

Total Other Instruction Activities 296.0

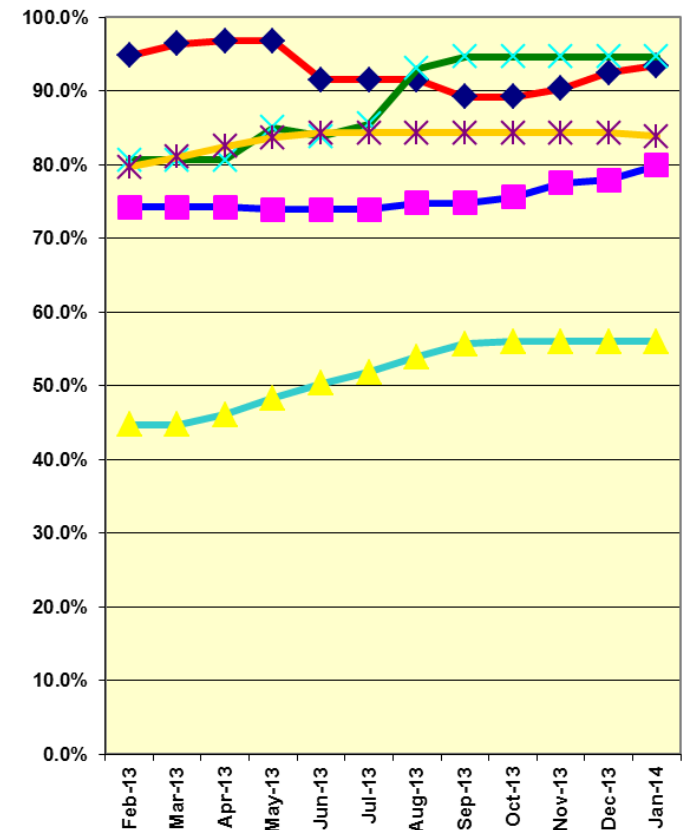
Core Vehicle Training Completed: BLUE RED GREEN GOLD

Percentage of core vehicle training complete: 79.9% 93.4% 94.6% 83.8%

Siemens P2000 training complete: 56.0% N/A N/A N/A

Average Specialist Rail Experience Level in Years: 11.7 10.0 9.8 10.1

Core Training Completed



Variations caused by new hires, employee transfers, & training completed



Metro