



Rail Fleet Services Monthly Report June 2014



Metro

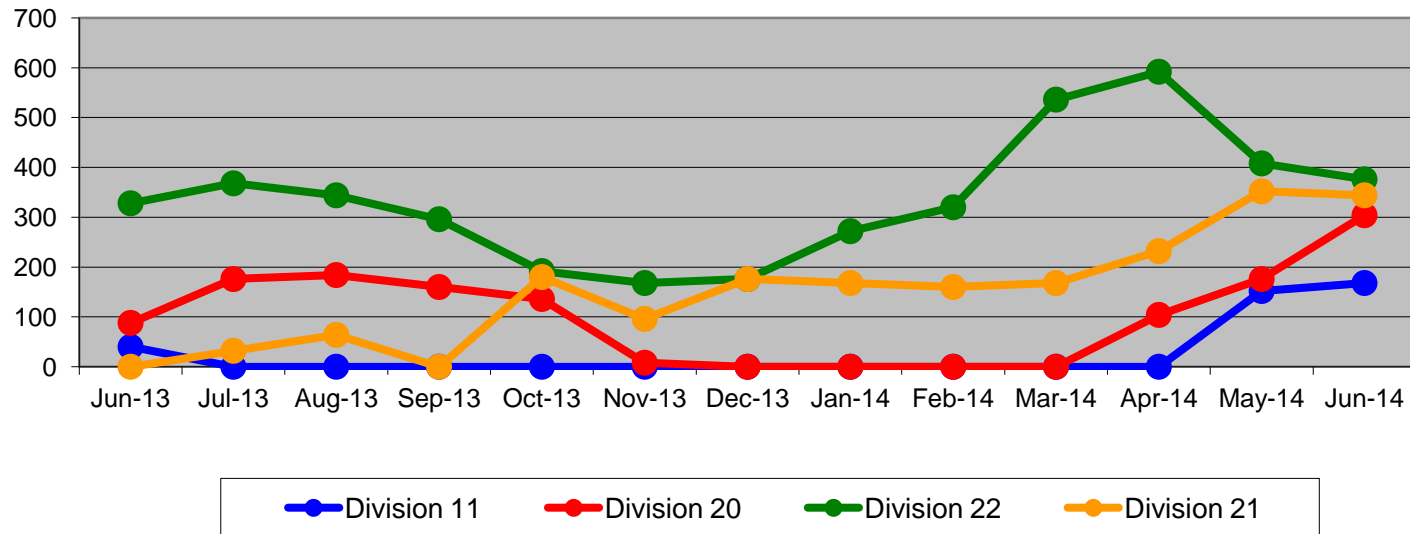
Table of Contents

•	Safety		
	- Industrial Injuries	Page	3
	- Rail Vehicle Accidents & Major Incidents	Page	4
•	Customer Service		
	- Service Delivery – AM/PM Pull-Outs	Page	5
	- Vehicle Utilization – Blue Line & Green Line	Page	6
	- Vehicle Utilization – Red Line & Gold Line	Page	7
	- All Train Delay Incidents	Page	8
	- Mean Miles Between Failures (Major)	Page	9
	- Mileage Between Data Range (by month)	Page	10
•	Business Processes		
	- Top Incident Categories	Page	11
	- Major Incidents	Page	12
	- Preventive Maintenance Compliance	Page	13
	- RFS Wrench Turning	Page	14
•	Finance		
	- Vandalism & Graffiti Costs	Page	15
	- Graffiti Pictures	Page	16
	- Labor & Material Costs	Page	17
	- Cost per mile	Page	18
	- Absence vs. Overtime	Page	19
•	Engineering		
	- Rail Vehicle Engineering Project Summary	Page	20-23
•	Growth		
	- RFS Instruction Department Activities	Page	24

Industrial Injuries – Lost Work Hours June 2014

	Jun-13	Jul-13	Aug-13	Sep-13	Oct-13	Nov-13	Dec-13	Jan-14	Feb-14	Mar-14	Apr-14	May-14	Jun-14	13-Month Period
Division 11	40	0	0	0	0	0	0	0	0	0	0	152	168	360
Division 20	88	176	184	160	136	8	0	0	0	0	104	176	304	1,336
Division 22	328	368	344	296	192	168	176	272	320	536	592	408	376	4,376
Division 21	0	32	64	0	180	96	176	168	160	168	232	352	344	1,972
Totals	456	576	592	456	508	272	352	440	480	704	928	1,088	1,192	8,044

Industrial Injuries (lost work hours)



Rail Vehicle Accidents & Major Incidents

June 2014

Repair Costs	Jun-13	Jul-13	Aug-13	Sep-13	Oct-13	Nov-13	Dec-13	Jan-14	Feb-14	Mar-14	Apr-14	May-14	Jun-14	13-Month Period
Blue/Expo Line	\$4,926	\$14,951	\$2,338	\$3,700	\$11,475	\$13,838	\$0	\$8,370	\$15,618	\$13,690	\$72,961	\$9,463	\$9,964	\$181,294
Red/Purple Line	\$0	\$0	\$1,358	\$0	\$0	\$0	\$0	\$0	\$0	\$356	\$0	\$0	\$0	\$1,714
Green Line	\$0	\$0	\$0	\$0	\$0	\$0	\$1,008	\$0	\$0	\$0	\$0	\$0	\$0	\$1,008
Gold Line	\$8,220	\$0	\$537	\$0	\$0	\$0	\$0	\$0	\$0	\$714	\$0	\$0	\$5,860	\$15,331
Totals	\$13,146	\$14,951	\$4,233	\$3,700	\$11,475	\$13,838	\$1,008	\$8,370	\$15,618	\$14,760	\$72,961	\$9,463	\$15,824	\$199,347

Rail Vehicle Accident Costs - June 2014				
Date	Incident #	Problem Code	Incident Description	Cost
Metro Blue/Expo Line				
6/12/14	2467965	Train vs. Vehicle	A 10-73 was reported at 18th and Flower, Southbound.	\$ 8,477
6/28/14	2473958	Train vs. Pedestrian	A 10-72 was reported Southbound at Gage grade crossing.	\$ 749
6/29/14	2474181	Train vs. Pedestrian	A 10-72 was reported at Gage grade crossing Track #1, Train #118.	\$ 738
Total				\$ 9,964
Metro Gold Line				
6/3/14	2429275	Train vs. Vehicle	A 10-73 was reported at 1st and Alemda, Track # 1 Northbound.	\$ 5,860
Total				\$ 5,860
Grand Total				\$ 15,824
(10-71) = Train vs. Object, (10-72) = Train vs. Pedestrian, (10-73) = Train vs. Vehicle (10-74) = Train vs. MTA Vehicle, (10-75) = Derailment				
Note: Repair costs are only the expenses captured during the time period of the report. Actual costs may be significantly higher, if repairs are spread out over several months.				

Service Delivery June 2014

Blue/Expo Line Fleet Size: 92

<u>Pull Out</u>	<u>Vehicles Required</u>	<u>Average Available</u>	<u>% Up (Down)</u>
Weekday:	78	78	100%
Weekend:	60	64	107%
Late Pullouts: 0*			
Monthly Mileage:	637,194		

Red/Purple Line Fleet Size: 104

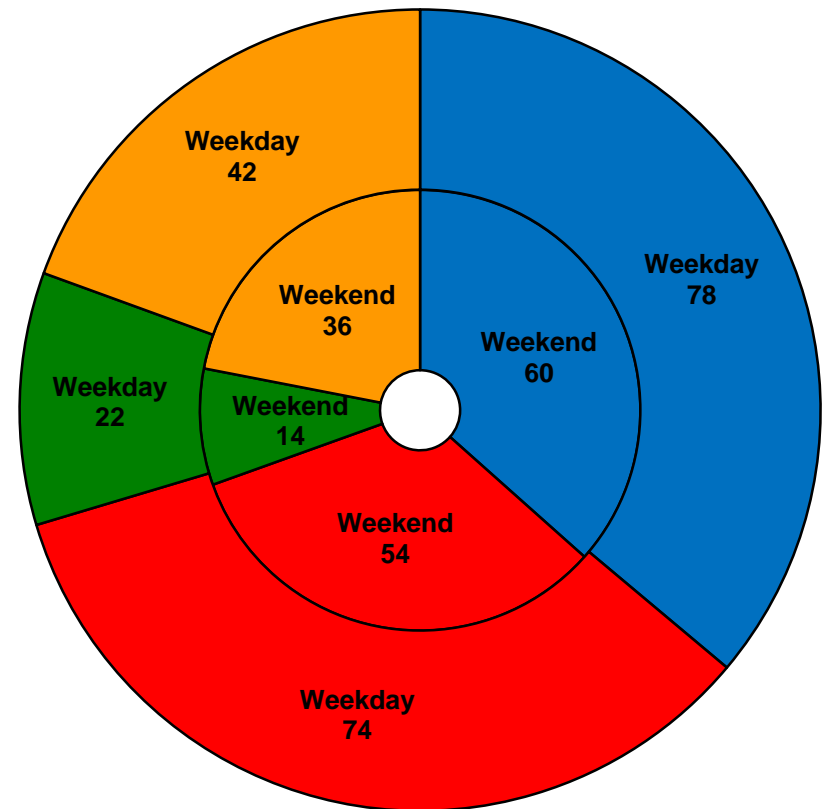
<u>Pull Out</u>	<u>Vehicles Required</u>	<u>Average Available</u>	<u>% Up (Down)</u>
Weekday:	74	80	108%
Weekend:	54	66	122%
Late Pullouts: 0*			
Monthly Mileage:	603,260		

Green Line Fleet Size: 29

<u>Pull Out</u>	<u>Vehicles Required</u>	<u>Average Available</u>	<u>% Up (Down)</u>
Weekday:	22	22	100%
Weekend:	14	17	121%
Late Pullouts: 0*			
Monthly Mileage:	225,836		

Gold Line Fleet Size: 50

<u>Pull Out</u>	<u>Vehicles Required</u>	<u>Average Available</u>	<u>% Up (Down)</u>
Weekday:	42	43	102%
Weekend:	36	40	111%
Late Pullouts: 0*			
Monthly Mileage:	325,245		

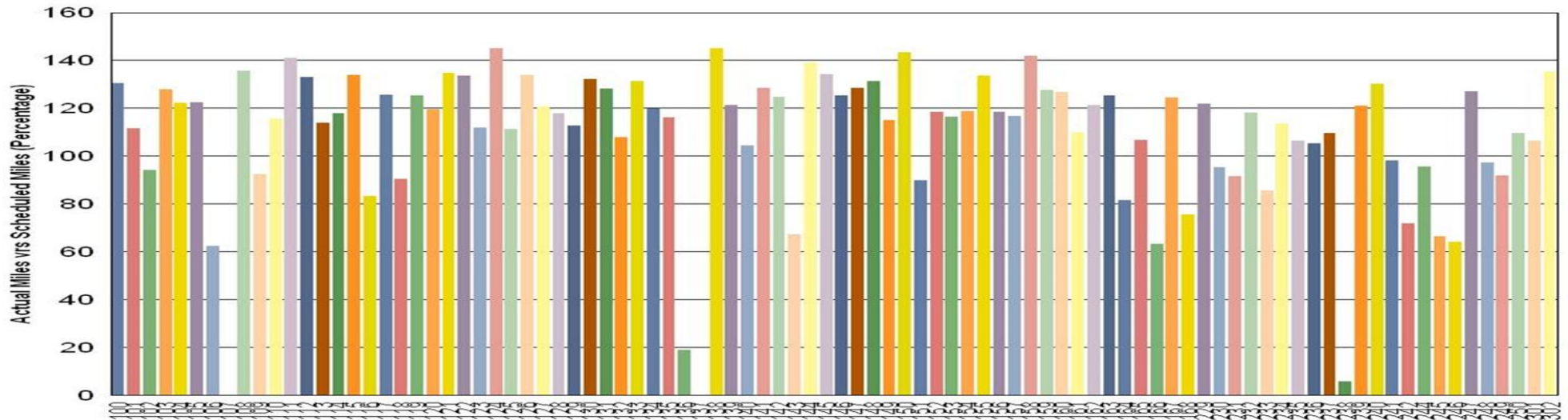


■ Blue/Expo Line ■ Red/Purple Line ■ Green Line ■ Gold Line

Vehicle Utilization

June 2014

Metro Blue/Expo Line



Blue/Expo Line:

Car # 107 Out of service for Interior Graffiti Abatement and Exterior Painting

Car # 136 Out of service for troubleshooting and repair due to repeat failures causing multiple delays on the mainline

Car # 137 Out of service due to major accident repair

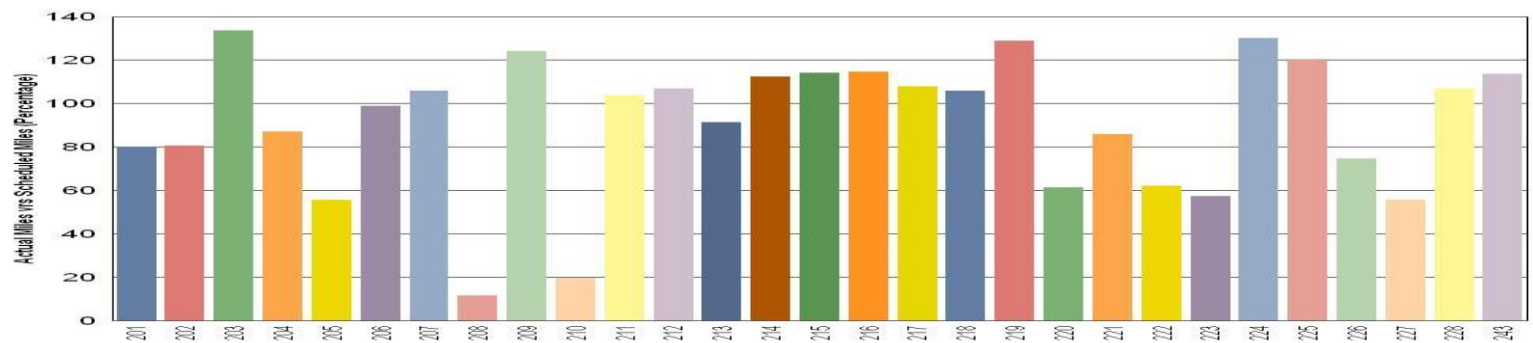
Car # 238 Out of service for troubleshooting and repair due to repeat friction brake failure, troubleshooting and repair

Metro Green Line

Green Line:

Car # 208 On hold for articulation cables

Car # 210 On hold for propulsion fault and 90K



Note: Percentage includes an average 4% mileage deduction for yard mileage and vehicle testing.

Vehicle Utilization June 2014

Red/Purple Line:

The following cars were out of service due to propulsion issue:

Car # 511-512

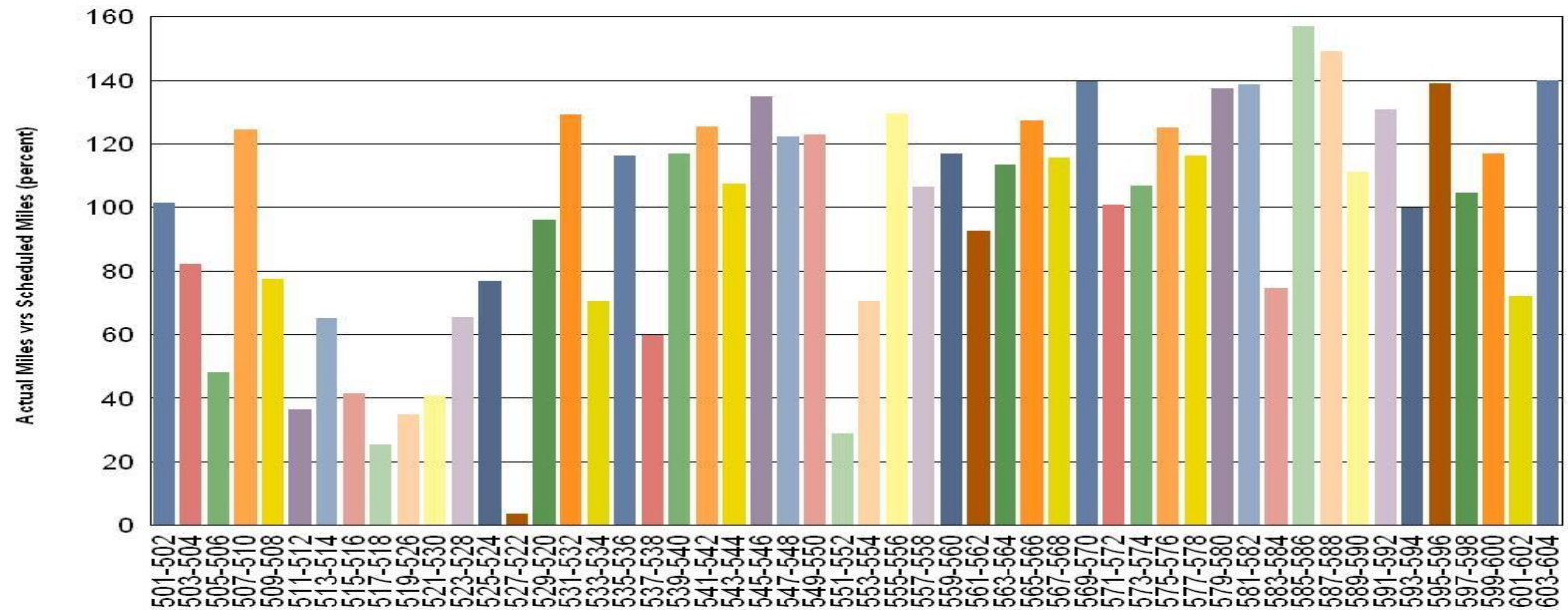
Car # 517-518

Car # 519-526

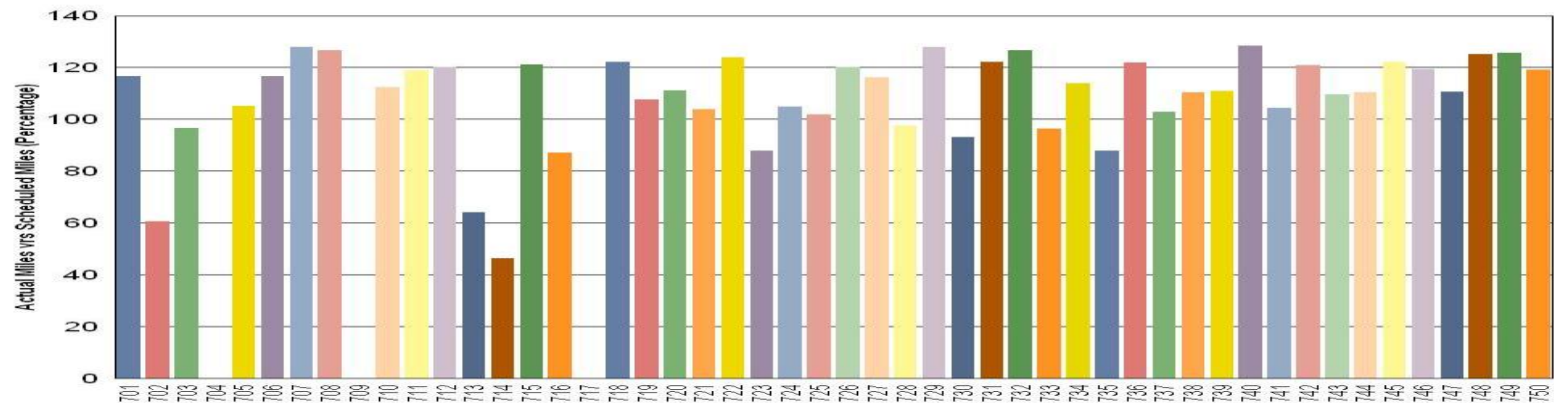
Car # 527-522

Car# 551-552 On hold for door calibration project

Metro Red/Purple Line



Metro Gold Line

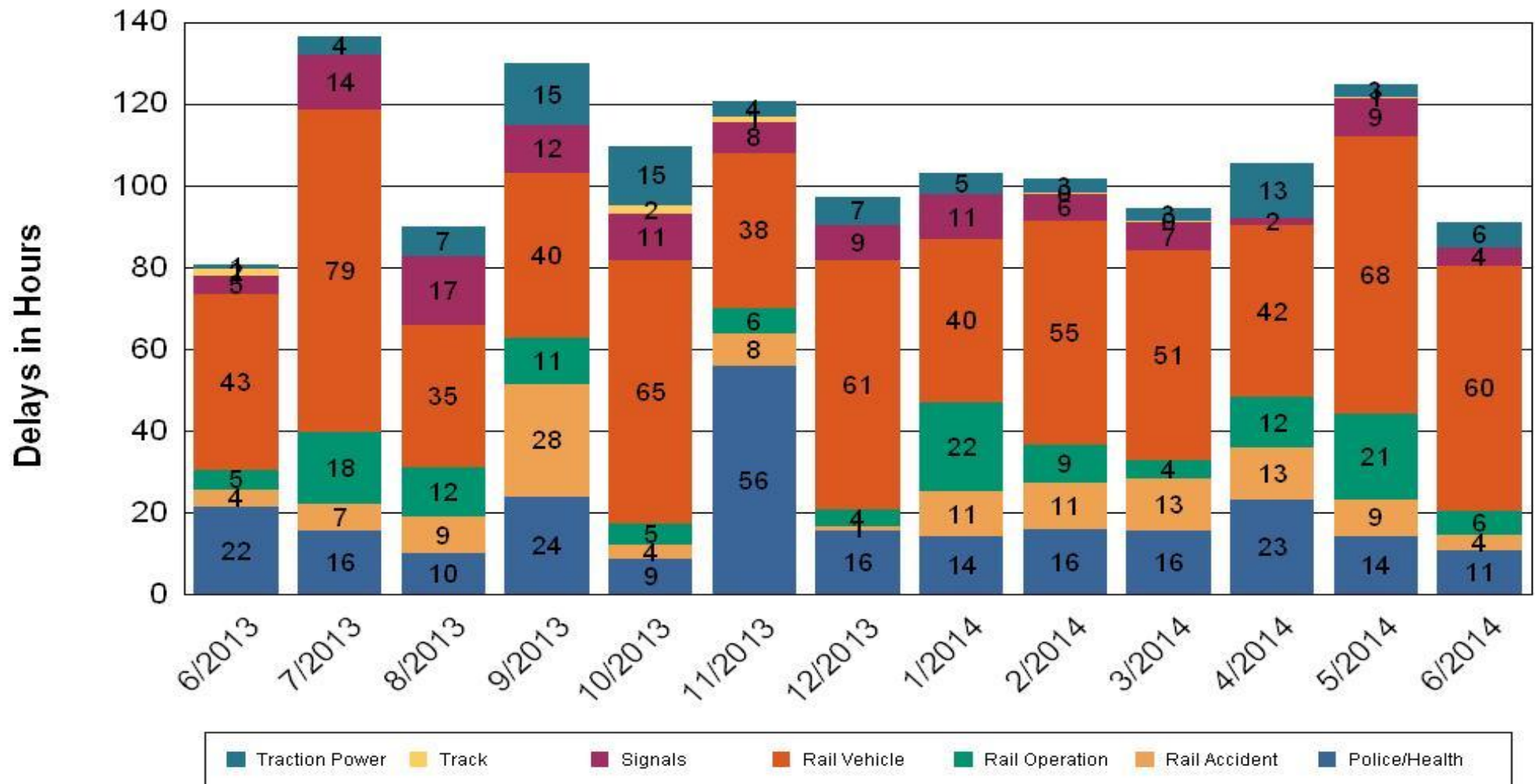


•Percentage includes an average 4% mileage deduction for yard mileage and vehicle testing.

All Train Delay (Hours) June 2014

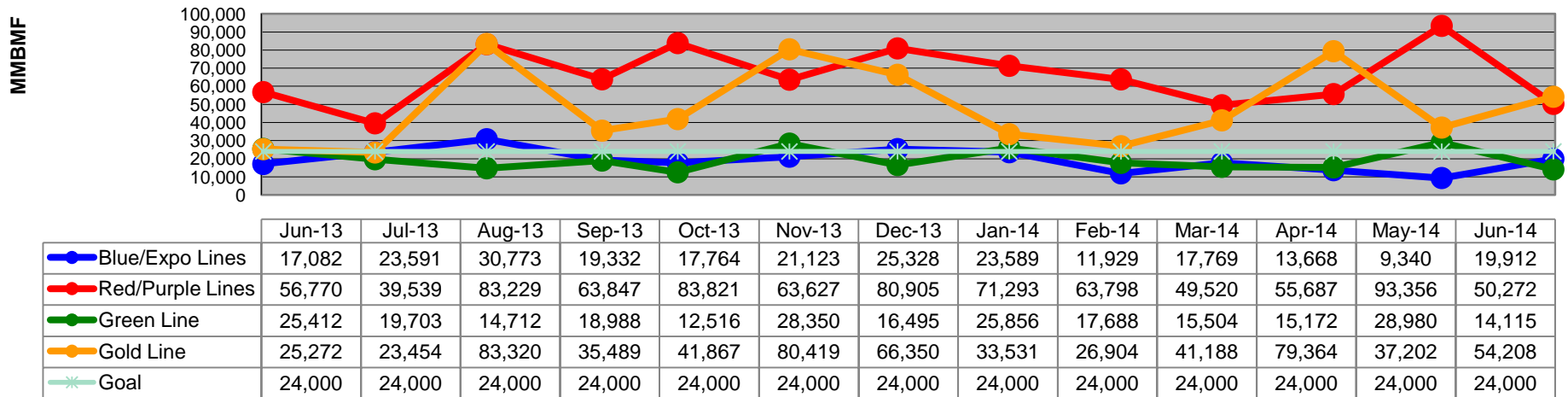
All Train Delays

Totals Include the delay to all trains involved (not just the primary incident)

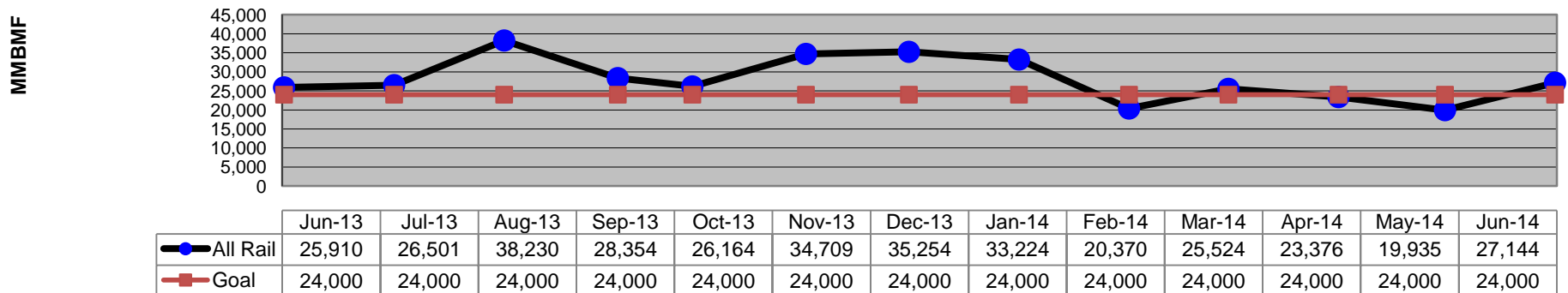


Mean Miles Between Failures (Major) Year to Date – June 2014

Mean Miles Between Major Failures (by line)



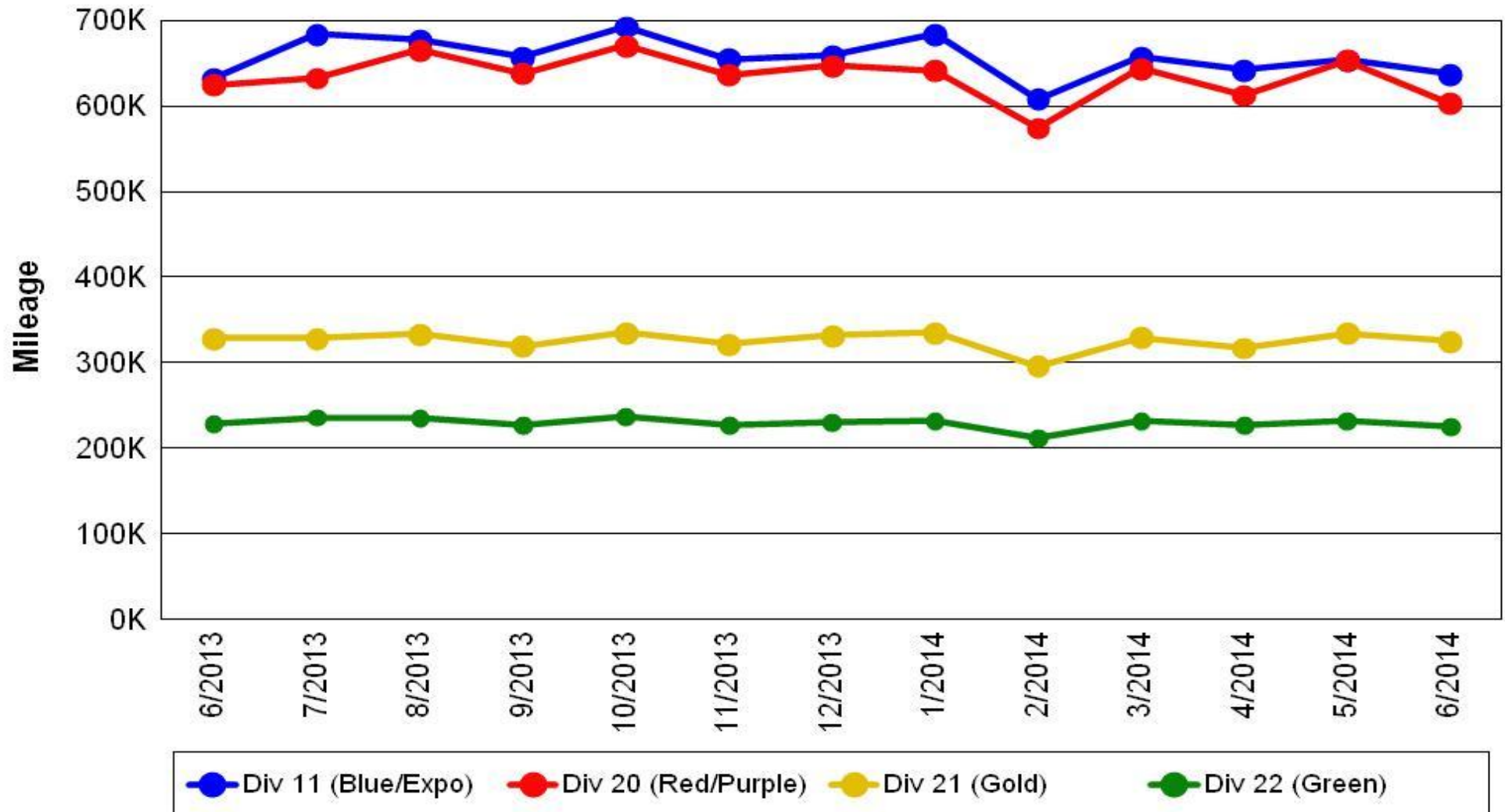
Mean Miles Between Major Failures (all)



Mileage Between Data Range (by month)

June 2014

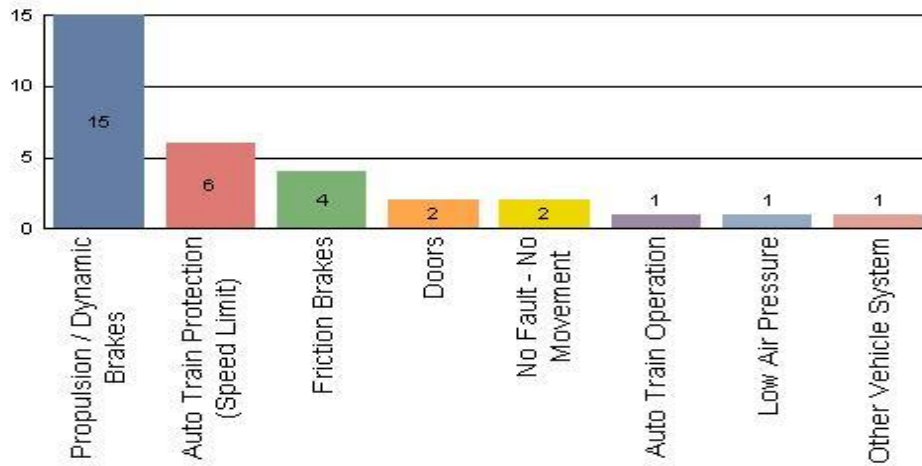
Rail Division Monthly Mileage



Top Incident Categories June 2014

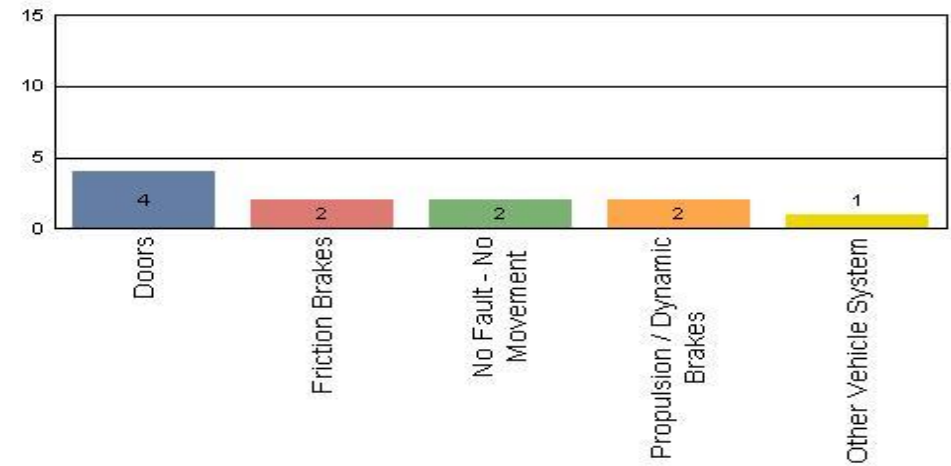
Metro Blue/Expo Line

Top Incident Categories



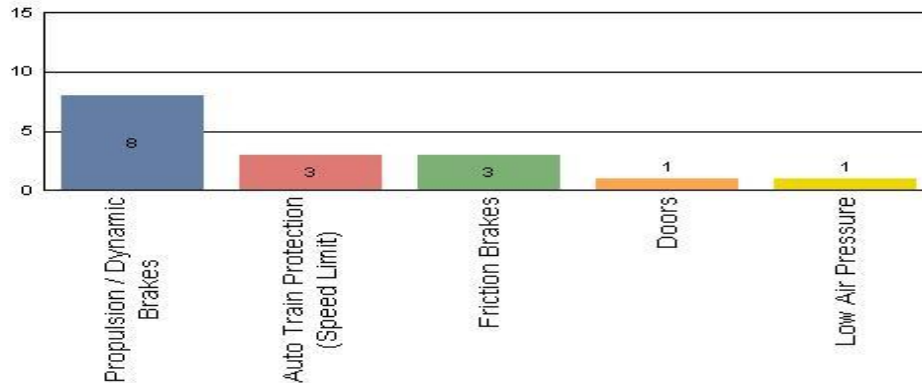
Metro Red/Purple Line

Top Incident Categories



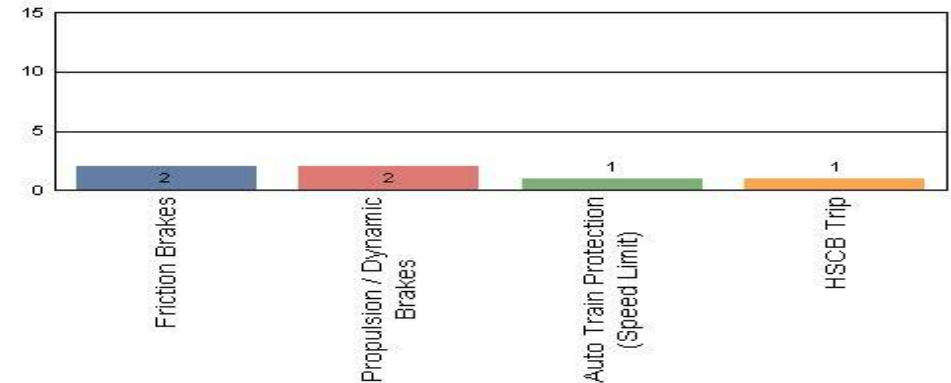
Metro Green Line

Top Incident Categories



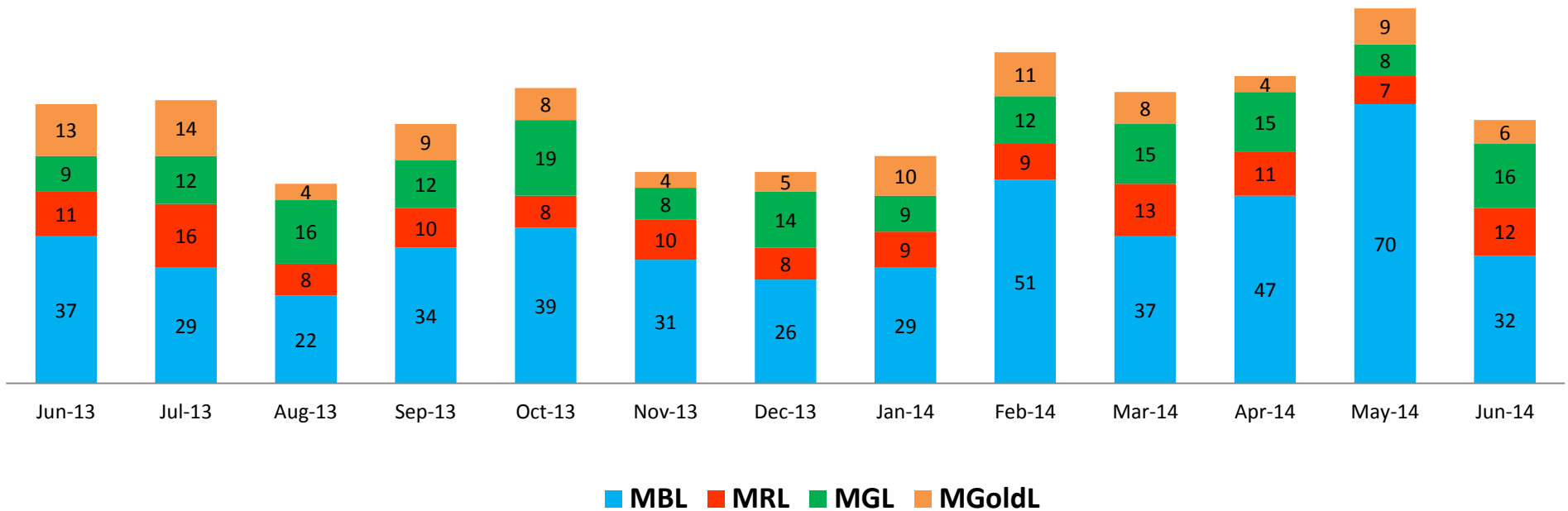
Metro Gold Line

Top Incident Categories



Major Incidents June 2014

Numbers of Major Incidents by Line



Preventive Maintenance Compliance

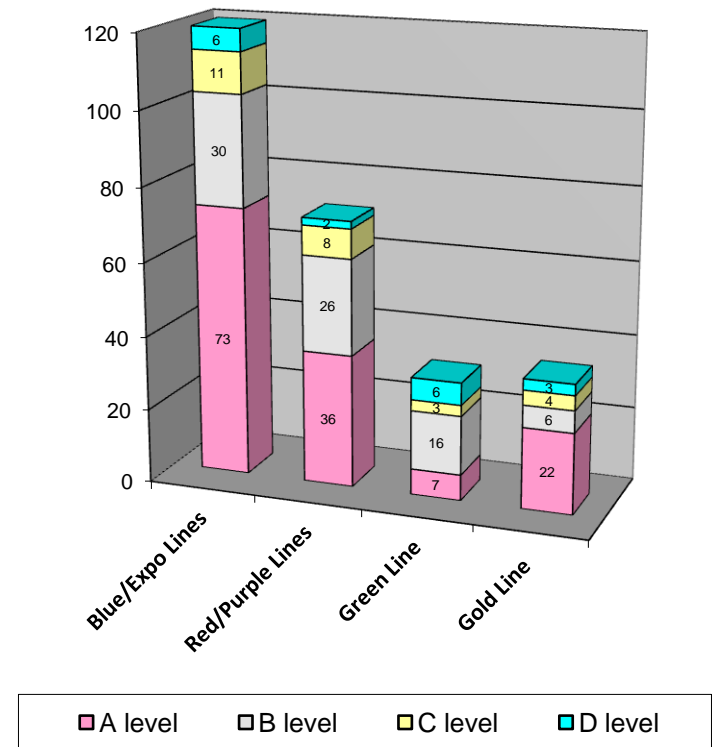
June 2014

PM Compliance	Jun-13	Jul-13	Aug-13	Sep-13	Oct-13	Nov-13	Dec-13	Jan-14	Feb-14	Mar-14	Apr-14	May-14	Jun-14
Blue/Expo Lines	100%	100%	100%	100%	100%	100%	100%	100%	100%	100%	100%	100%	100%
Red/Purple Lines	100%	100%	100%	100%	100%	100%	100%	100%	100%	100%	100%	100%	100%
Green Line	100%	100%	100%	100%	96%	92%	100%	100%	100%	100%	100%	100%	97%*
Gold Line	100%	100%	100%	100%	100%	100%	100%	100%	100%	100%	100%	100%	100%

* Inspection was completed, but passed target window by 10 miles.

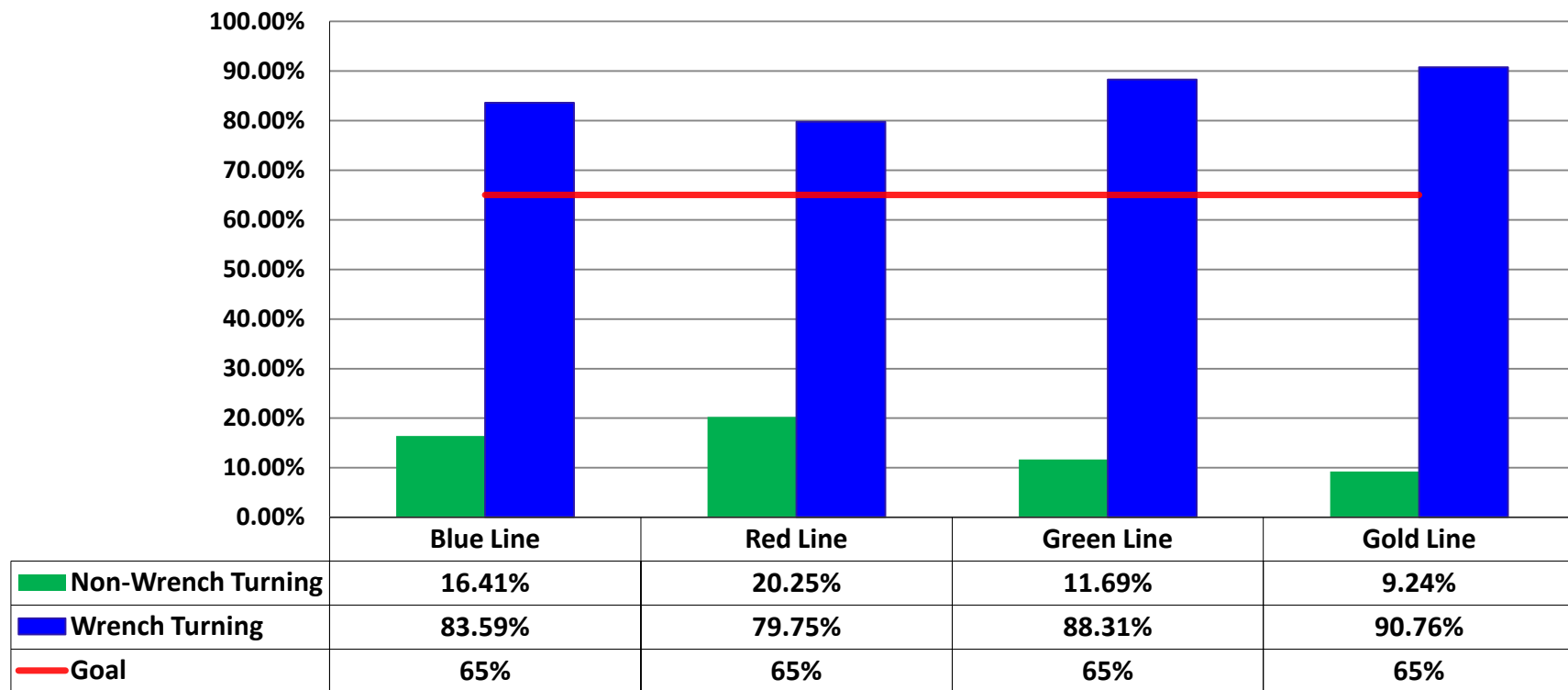
Number of Preventive Maintenance Inspections - June 2014					
Line	A level	B level	C level	D level	Totals
Blue/Expo Lines	73	30	11	6	120
Red/Purple Lines	36	26	8	2	72
Green Line	7	16	3	6	32
Gold Line	22	6	4	3	35
Totals:	138	78	26	17	259

Explanation of PM Inspection levels		Miles			
Line	Type	A level	B level	C level	D level
Blue/Expo Lines	P865/P2020	5,000	15,000	30,000	60,000
Blue/Expo Lines	P2000	7,500	22,500	45,000	90,000
Red/Purple Lines	A650	7,500	22,500	45,000	90,000
Green Line	P2000	7,500	22,500	45,000	90,000
Gold Line	P2550	10,000	30,000	60,000	120,000



RFS Wrench Turning June 2014

RFS - Wrench Turning June 2014

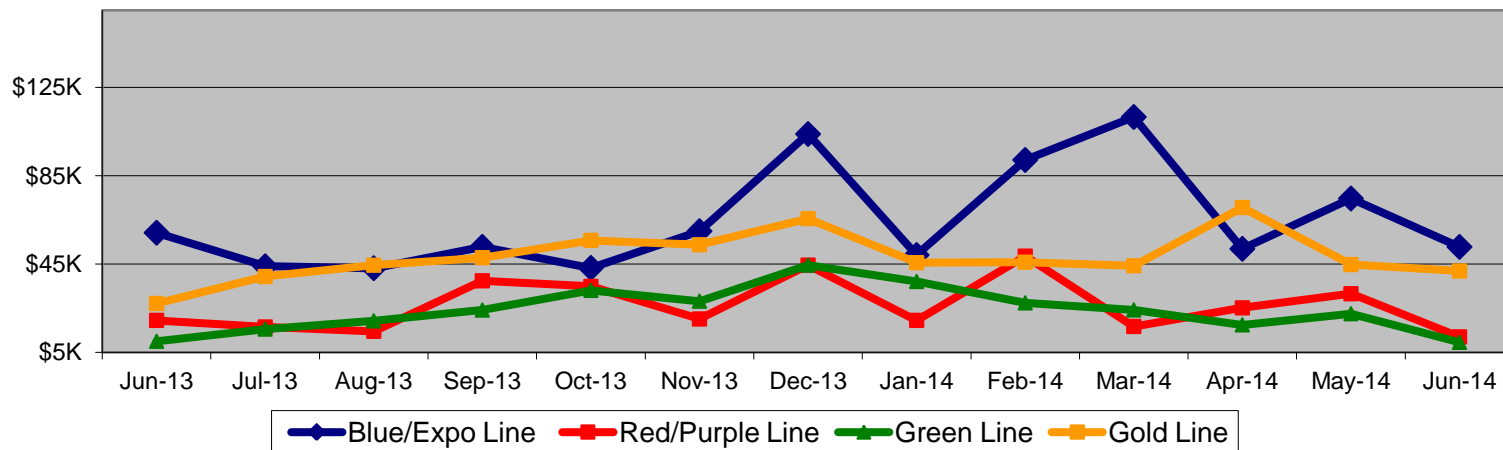


Vandalism & Graffiti Report

June 2014

Graffiti Costs

	Jun-13	Jul-13	Aug-13	Sep-13	Oct-13	Nov-13	Dec-13	Jan-14	Feb-14	Mar-14	Apr-14	May-14	Jun-14	13-Month Period
Blue/Expo Line	\$59K	\$44K	\$43K	\$53K	\$43K	\$60K	\$104K	\$49K	\$92K	\$112K	\$52K	\$75K	\$53K	\$838K
Red/Purple Line	\$19K	\$16K	\$14K	\$37K	\$35K	\$20K	\$44K	\$19K	\$49K	\$17K	\$25K	\$32K	\$12K	\$340K
Green Line	\$10K	\$15K	\$19K	\$24K	\$33K	\$28K	\$44K	\$37K	\$27K	\$24K	\$17K	\$22K	\$9K	\$312K
Gold Line	\$27K	\$39K	\$44K	\$48K	\$56K	\$54K	\$66K	\$46K	\$46K	\$44K	\$71K	\$45K	\$42K	\$626K
Totals:	\$116K	\$115K	\$121K	\$162K	\$167K	\$162K	\$258K	\$151K	\$214K	\$197K	\$165K	\$173K	\$116K	\$2,116K



June 2014 Vandalism & Graffiti - All Rail				
	Qty	Labor	Materials	Totals
Windows Replaced	136	\$ 14,994	\$ 25,311	\$ 40,305
Vandal Shields	361	\$ 10,584	\$ 8,132	\$ 18,716
Seats Cleaned	541	\$ 2,817	\$ -	\$ 2,817
Seats Replaced	208	\$ 6,142	\$ 6,760	\$ 12,902
Graffiti Removal - Other	806	\$ 15,486	\$ 2,736	\$ 18,222
Repainting Panels	294	\$ 18,522	\$ 4,440	\$ 22,962
Totals	2,346	\$ 68,545	\$ 47,379	\$ 115,924

Graffiti Pictures June 2014

Blue Line



Green Line



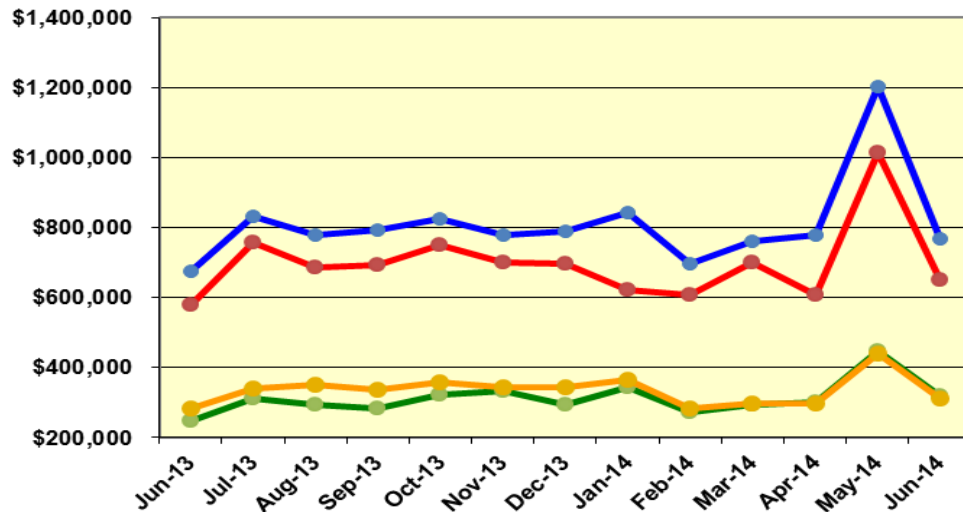
Gold Line



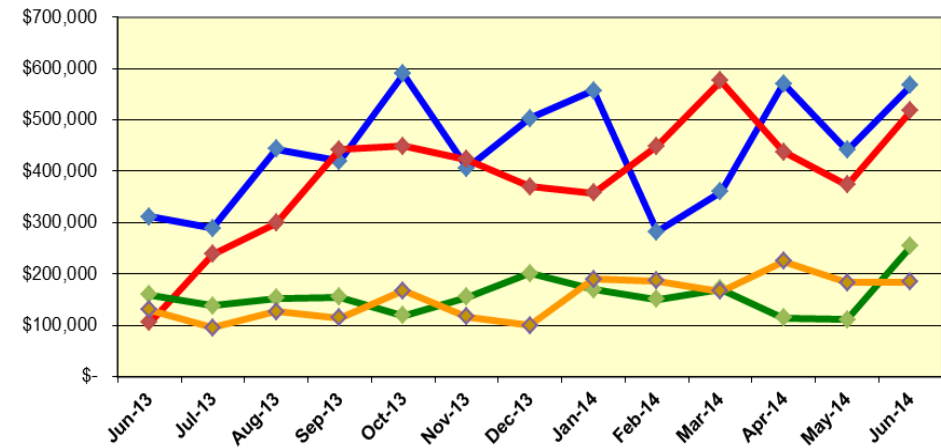
Labor and Material Costs

June 2014

Labor Costs



Material Costs



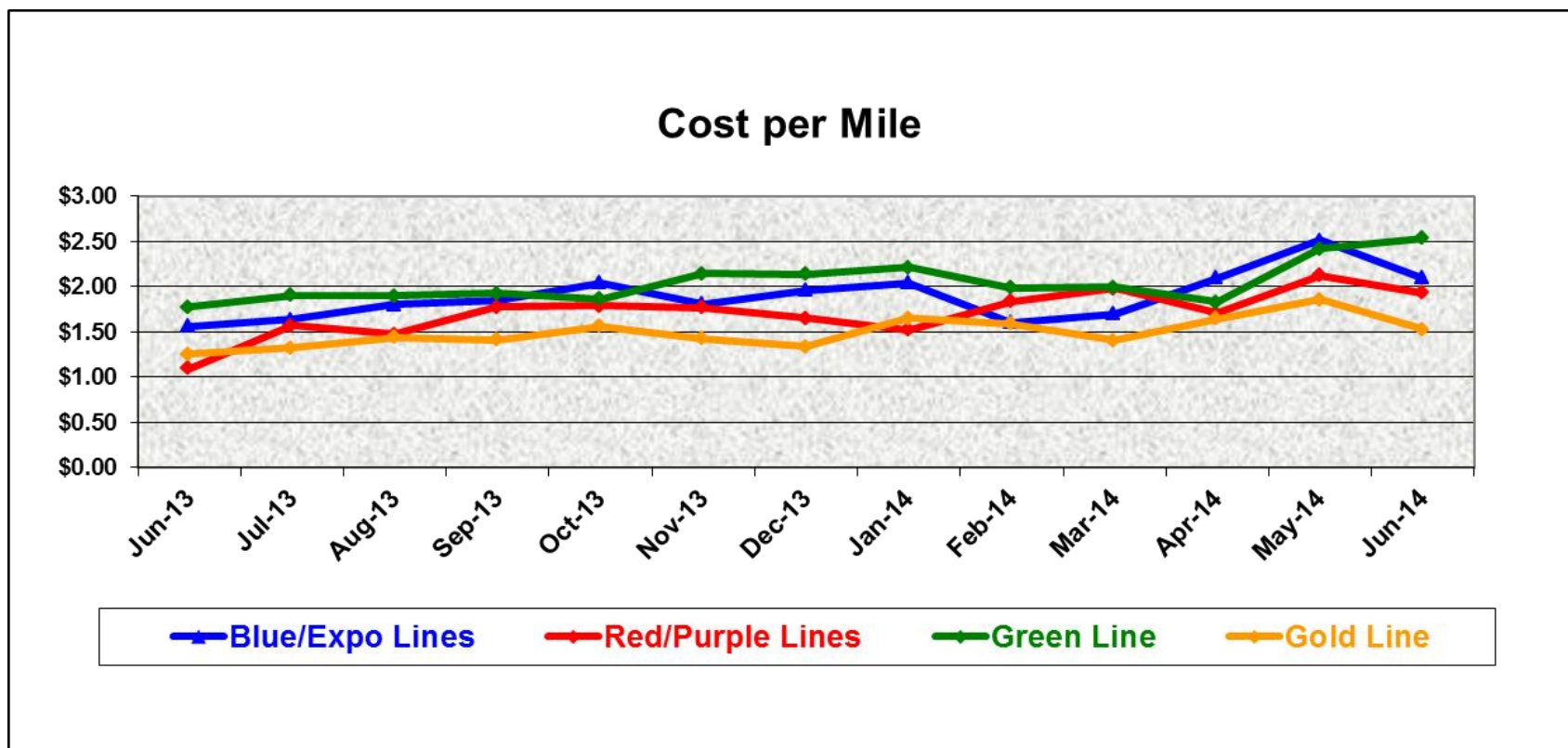
	Jun-13	Jul-13	Aug-13	Sep-13	Oct-13	Nov-13	Dec-13	Jan-14	Feb-14	Mar-14	Apr-14	May-14*	Jun-14
LABOR COSTS													
Blue/Expo Lines	\$ 675,752	\$ 833,333	\$ 777,432	\$ 794,828	\$ 826,769	\$ 780,678	\$ 788,589	\$ 842,979	\$ 695,394	\$ 760,511	\$ 778,469	\$ 1,204,234	\$ 767,717
Red/Purple Lines	\$ 579,395	\$ 756,262	\$ 684,850	\$ 693,597	\$ 750,452	\$ 700,975	\$ 697,759	\$ 620,440	\$ 608,097	\$ 701,156	\$ 608,816	\$ 1,015,092	\$ 650,226
Green Line	\$ 247,129	\$ 312,740	\$ 295,374	\$ 284,105	\$ 323,749	\$ 332,737	\$ 292,482	\$ 345,262	\$ 271,877	\$ 294,381	\$ 302,213	\$ 449,117	\$ 318,516
Gold Line	\$ 282,541	\$ 338,719	\$ 352,473	\$ 336,795	\$ 357,408	\$ 343,700	\$ 345,170	\$ 363,886	\$ 283,563	\$ 298,069	\$ 297,634	\$ 438,759	\$ 313,589
Totals	\$ 1,784,817	\$ 2,241,054	\$ 2,110,129	\$ 2,109,325	\$ 2,258,378	\$ 2,158,090	\$ 2,123,999	\$ 2,172,567	\$ 1,858,931	\$ 2,054,117	\$ 1,987,132	\$ 3,107,202	\$ 2,050,048

*ATU Contract for pay increase was approved by the Board and ATU staff got retro pay in May 2014.

MATERIAL COSTS													
Blue/Expo Lines	\$ 311,415	\$ 288,894	\$ 442,803	\$ 419,133	\$ 589,324	\$ 406,032	\$ 502,761	\$ 556,457	\$ 282,466	\$ 359,845	\$ 570,775	\$ 440,576	\$ 567,257
Red/Purple Lines	\$ 105,805	\$ 238,207	\$ 298,670	\$ 441,927	\$ 449,033	\$ 422,849	\$ 369,819	\$ 357,244	\$ 448,225	\$ 575,495	\$ 437,612	\$ 373,815	\$ 516,934
Green Line	\$ 159,526	\$ 138,190	\$ 152,243	\$ 154,678	\$ 119,411	\$ 154,582	\$ 201,035	\$ 169,759	\$ 150,881	\$ 170,250	\$ 113,979	\$ 111,344	\$ 254,264
Gold Line	\$ 129,742	\$ 95,664	\$ 126,942	\$ 114,461	\$ 167,128	\$ 116,167	\$ 99,267	\$ 189,310	\$ 186,640	\$ 166,216	\$ 224,430	\$ 183,115	\$ 183,869
Totals	\$ 706,488	\$ 760,956	\$ 1,020,659	\$ 1,130,199	\$ 1,324,896	\$ 1,099,631	\$ 1,172,883	\$ 1,272,769	\$ 1,068,212	\$ 1,271,807	\$ 1,346,796	\$ 1,108,849	\$ 1,522,323

Cost Per Mile June 2014

Cost per mile:	Jun-13	Jul-13	Aug-13	Sep-13	Oct-13	Nov-13	Dec-13	Jan-14	Feb-14	Mar-14	Apr-14	May-14	Jun-14
Blue/Expo Lines	\$1.56	\$1.64	\$1.80	\$1.85	\$2.04	\$1.81	\$1.96	\$2.05	\$1.61	\$1.70	\$2.10	\$2.52	\$2.10
Red/Purple Lines	\$1.10	\$1.57	\$1.48	\$1.78	\$1.79	\$1.77	\$1.65	\$1.52	\$1.84	\$1.98	\$1.71	\$2.13	\$1.93
Green Line	\$1.78	\$1.91	\$1.90	\$1.93	\$1.86	\$2.15	\$2.14	\$2.21	\$1.99	\$2.00	\$1.83	\$2.42	\$2.54
Gold Line	\$1.25	\$1.32	\$1.44	\$1.41	\$1.57	\$1.43	\$1.34	\$1.65	\$1.59	\$1.41	\$1.64	\$1.86	\$1.53



ATU Absences vs. Overtime

June 2014

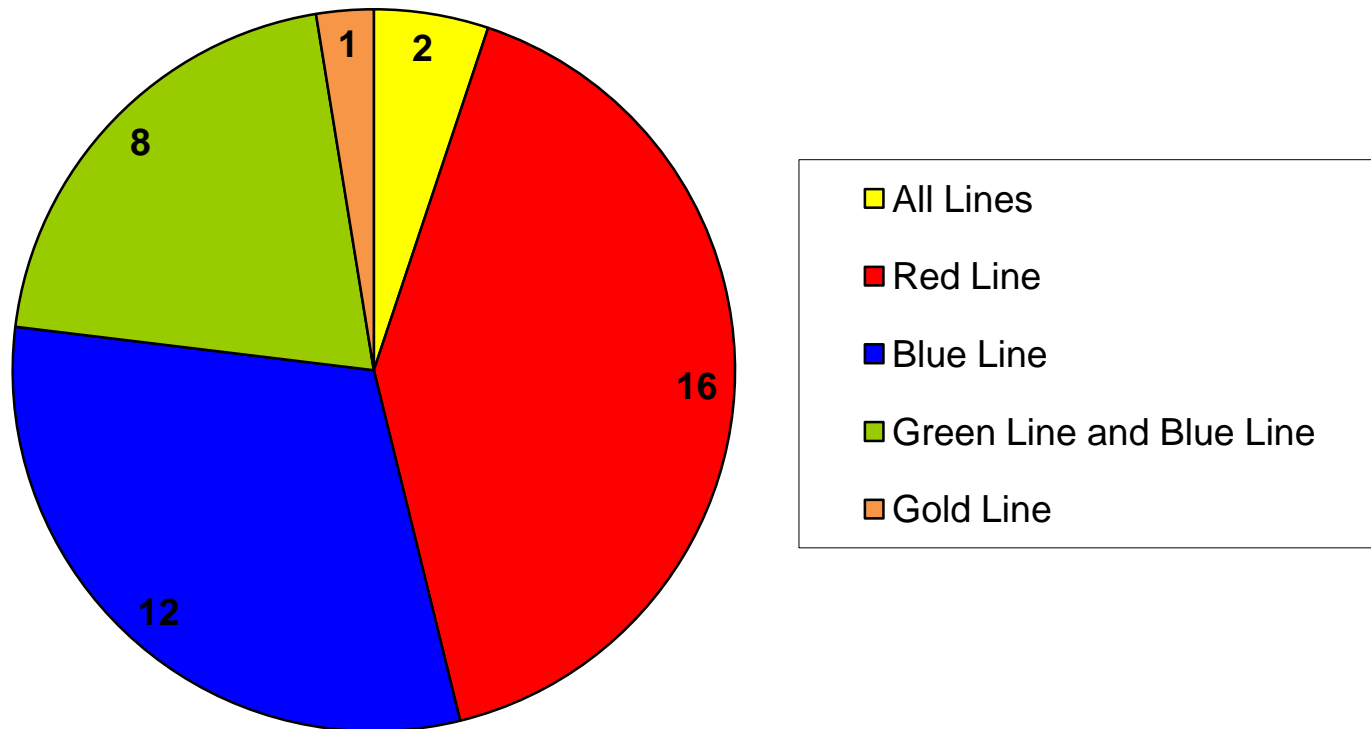
ABSENCE TYPE and HOURS	3940 Admin.	3941 Blue	3942 Red	3943 Green	3944 Gold	3947 Expo	Total
AWP-ABSENT W/O PERMISSION	-	-	-	8	-	-	8
BER-BEREAVEMENT	-	40	-	56	-	-	96
CTO-COMPENSATORY TIME OFF	-	54	8	16	8	-	86
CUT-EMPLOYEE LEAVES EARLY	-	3	0	2	-	-	5
CVA - CASUAL VACATION	4	175	284	176	112	-	751
DSL-DISABILITY LEAVE/LONG	-	504	176	376	-	176	1,232
EFH-EMG. FLOAT HOL.	-	136	168	160	88	-	552
ETO-EXCUSED TIME OFF	1	60	28	13	57	1	159
FMI-FAM IND INJURY	-	-	216	-	352	-	568
FML-FAMILY CARE LEAVE	-	608	628	32	41	-	1,309
FMS-FAMILY LEAVE SICK	-	88	188	-	17	-	293
HLF-HOLIDAY FLOATING	72	1,056	580	280	312	24	2,324
II-INDUSTRIAL INJURY	-	-	-	56	-	-	56
JUR-JURY DUTY	-	8	-	-	-	-	8
LC1-LABOR CODE 233	-	113	154	40	64	18	389
LTI-OCCPIL/LONGTRM INJ LEAVE	-	168	304	320	344	-	1,136
MLN-MILITARY ABSENCE-UNPAID	-	48	-	-	-	-	48
SCK-SICK PAY	-	92	192	88	112	-	484
SCW-SICK WITHOUT PAY	-	-	128	64	56	-	248
SUS-DISCIPLINARY SUSPENSION	-	80	-	80	-	-	160
TAR-TARDY	-	1	2	3	2	-	7
VAC-VACATION	-	1,625	1,324	775	580	36	4,340
VAS-VACATION WHILE SICK	-	-	32	-	-	-	32
Total Absence Hours	77	4,859	4,411	2,544	2,145	255	14,291
ATU Number of Work Force (assigned)	8	122	110	49	51	5	345
Full Work Force hours/month	1,386	21,143	19,063	8,492	8,838	867	59,789
Absence as a % of Work Force	6%	23%	23%	30%	24%	29%	24%

OVERTIME TYPE and HOURS	3940 Admin.	3941 Blue	3942 Red	3943 Green	3944 Gold	3947 Expo	Total
CTB-COMPENSATORY TIME TO BANK	30	939	739	459	338	-	2,504
OTP-PREM OVERTIME	553	5,139	4,198	1,886	1,787	253	13,815
WLO-Worked Lunch Overtime	36	144	148	133	85	5	549
Total Overtime Hours	619	6,222	5,084	2,477	2,209	257	16,869
Overtime as a % of Work Force	45%	29%	27%	29%	25%	30%	28%
FTE Calculation - Absence & OT Hour	3940	3941	3942	3943	3944	3947	Total
Absences FTE	0	28	25	15	12	1	82
OTP FTE	4	36	29	14	13	1	97
FTE Difference	-4	-8	-4	1	-1	0	-15

Rail Vehicle Engineering Project Summary

June 2014

Engineering Technical Specifications 100% Completion - Total of 39 June 2014

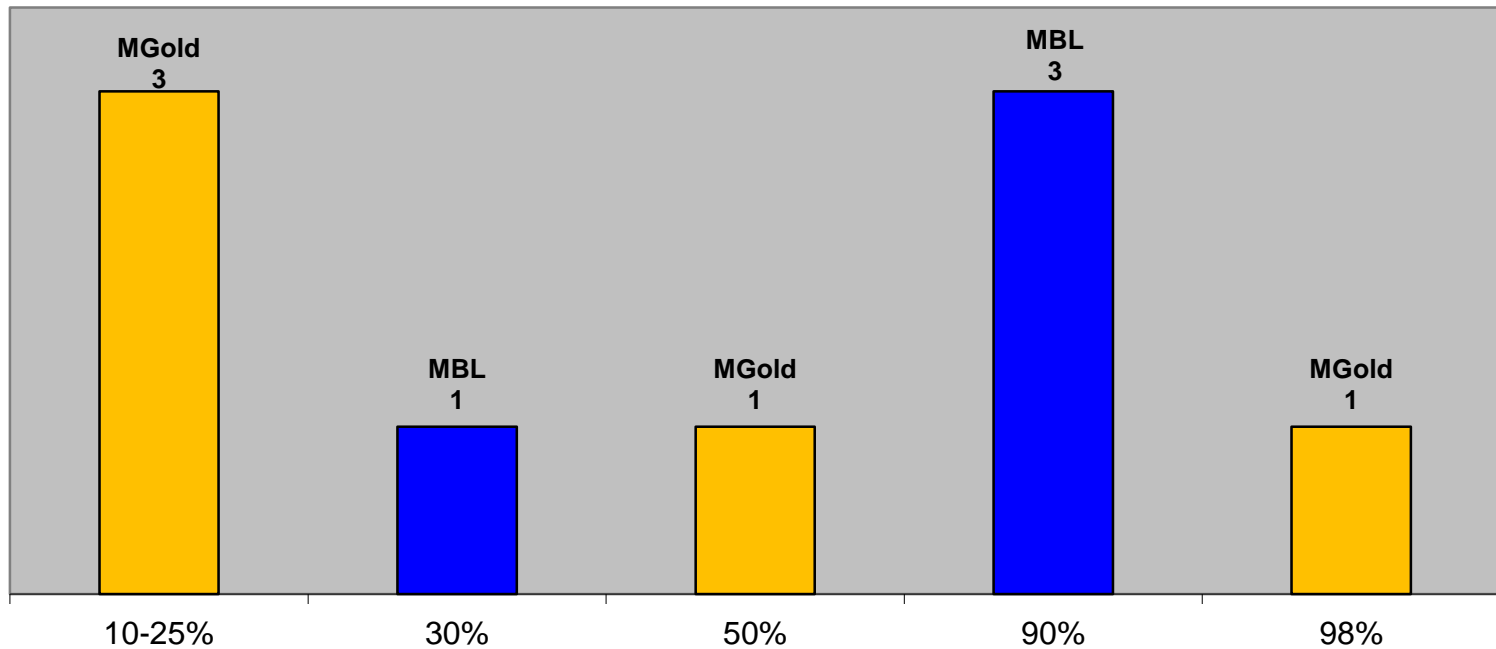


Details of specifications are available upon request.

Rail Vehicle Engineering Project Summary (cont'd)

June 2014

Engineering Technical Specifications Less than 100% Completion - Total of 9 June 2014

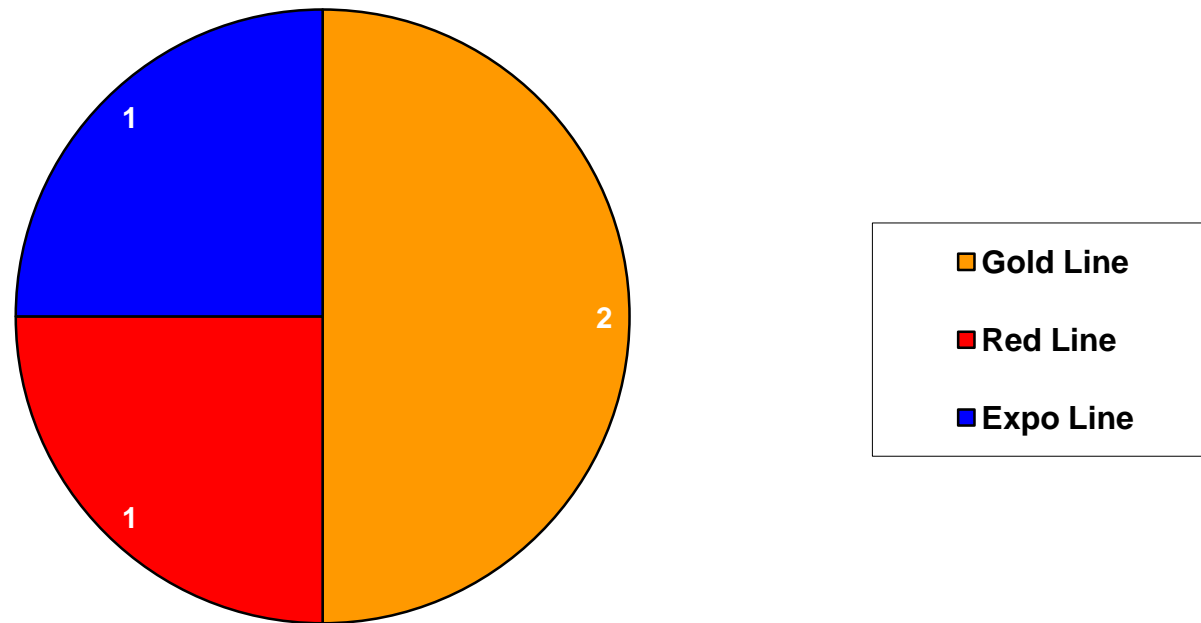


Details of specifications are available upon request.

Rail Vehicle Engineering Project Summary (cont'd)

June 2014

Engineering Projects
100% Completion - Total of 4
June 2014

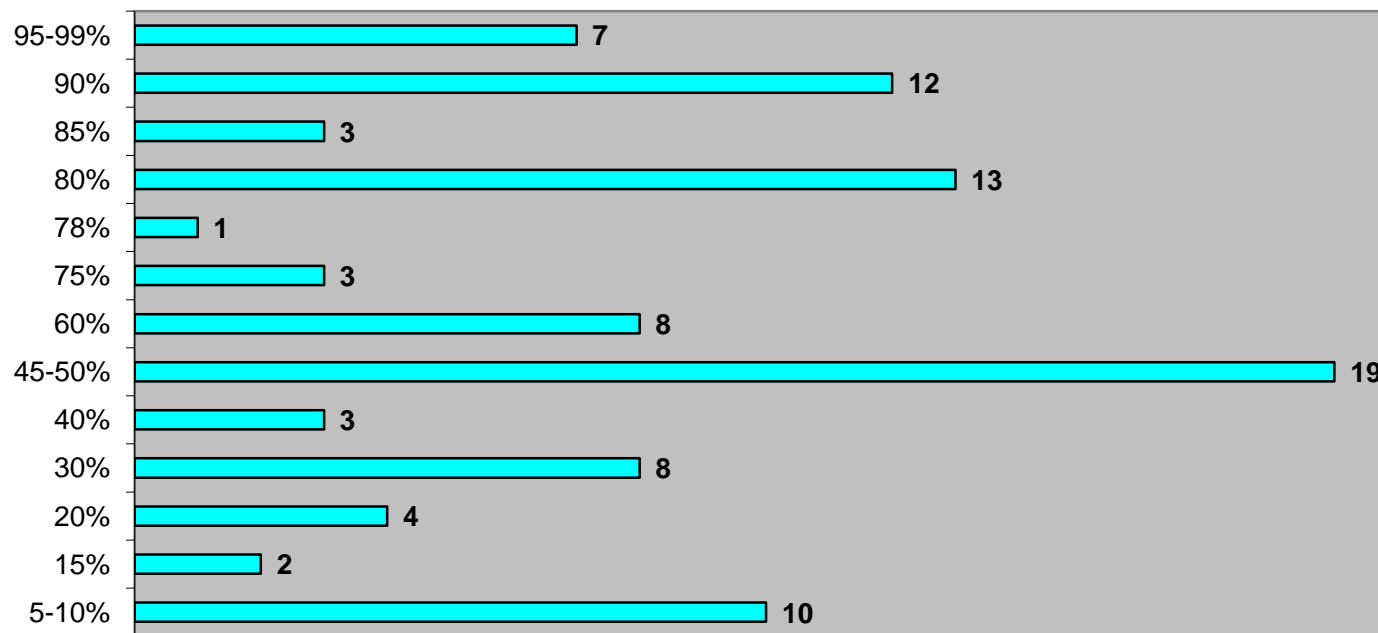


Details of projects are available upon request.

Rail Vehicle Engineering Project Summary (cont'd)

June 2014

Engineering Projects Less than 100% Completion - Total of 93 - All Lines June 2014



Details of projects are available upon request.

RFS Instruction Department Activities

June 2014

Training classes completed during the month of June 2014

Description	Course Hours	Student Count	Training Hours
<u>Blue & Expo Line Training - (P865/2020 & P2000 LRVs):</u>			
RFS 865/2020 ATP & TWC	48	4	192
RFS 865/2020 PROPULSION	48	6	288
Total Blue Line Training (Hours):			480
<u>Green Line Training (P2000 LRVs):</u>			
RFS SIEMENS 2000 VEHICLE SYSTEMS	48	3	144
Total Green Line Training (Hours):			144
<u>Gold Line Training (P2550 LRVs):</u>			
RFS ANSALDOBREDA 2550 EVENT RECORDER	16	6	96
RFS ANSALDOBREDA 2550 TRUCKS	24	6	144
RFS ANSALDOBREDA 2550 CARBODY	16	6	96
RFS ANSALDOBREDA 2550 DOORS	32	6	192
RFS ANSALDOBREDA 2550 H.V.A.C.	16	6	96
RFS ANSALDOBREDA 2550 FRICTION BRAKES	40	6	240
Total Gold Line Training (Hours):			528
Total RFS Instruction for the month of June 2014 (Hours):			1,152

Other Instruction Activities

Instructor Vacation and Holiday	80
PTU Setup Redline & A650 Curriculum, Administrative, and Technical Support	160
P865/P2020 Curriculum, Administrative, and Technical Support	40
P2000 Curriculum, Administrative, and Technical Support	40
P2550 Curriculum, Administrative, and Technical Support	40
LATTC Curriculum Development (KSME)	120

Total Other Instruction Activities **480**

RAIL SYSTEM SAFETY Training provided by Transportation Instruction **180**

Core Vehicle Training Completed: **BLUE** **RED** **GREEN** **GOLD**

Percentage of core vehicle training complete: **84.3%** **99.6%** **85.0%** **91.8%**

Siemens P2000 training complete: **55.3%** **N/A** **N/A** **N/A**

Average Specialist Rail Experience Level in Years: **12.1** **10.3** **9.4** **9.2**

Core Training Completed

