



# **Rail Fleet Services Monthly Report May 2014**



**Metro**

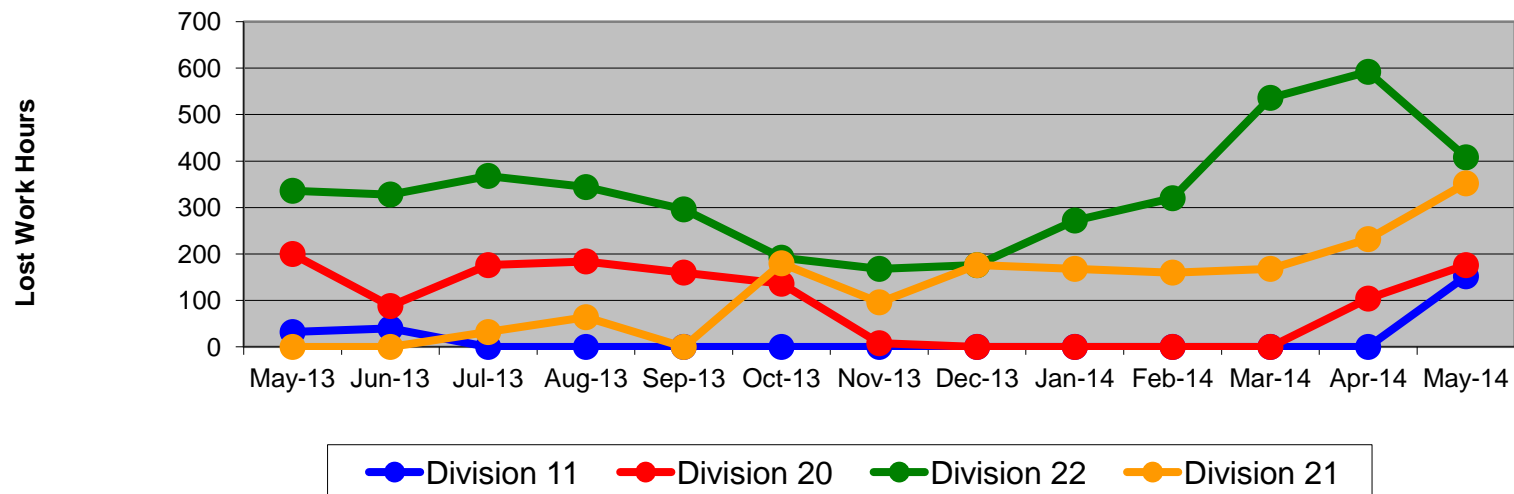
# Table of Contents

•	Safety		
	- Industrial Injuries	Page	3
	- Rail Vehicle Accidents & Major Incidents	Page	4
•	Customer Service		
	- Service Delivery – AM/PM Pull-Outs	Page	5
	- Vehicle Utilization – Blue Line & Green Line	Page	6
	- Vehicle Utilization – Red Line & Gold Line	Page	7
	- All Train Delay Incidents	Page	8
	- Mean Miles Between Failures (Major)	Page	9
	- Mileage Between Data Range (by month)	Page	10
•	Business Processes		
	- Top Incident Categories	Page	11
	- Major Incidents	Page	12
	- Preventive Maintenance Compliance	Page	13
	- RFS Wrench Turning	Page	14
•	Finance		
	- Vandalism & Graffiti Costs	Page	15
	- Graffiti Pictures	Page	16
	- Labor & Material Costs	Page	17
	- Cost per mile	Page	18
	- Absence vs. Overtime	Page	19
•	Engineering		
	- Rail Vehicle Engineering Project Summary	Page	20-23
•	Quality Assurance		
	- Warranty Program Projects Summary	Page	24
•	Growth		
	- RFS Instruction Department Activities	Page	25

# Industrial Injuries – Lost Work Hours May 2014

	May-13	Jun-13	Jul-13	Aug-13	Sep-13	Oct-13	Nov-13	Dec-13	Jan-14	Feb-14	Mar-14	Apr-14	May-14	13-Month Period
Division 11	32	40	0	0	0	0	0	0	0	0	0	0	152	224
Division 20	200	88	176	184	160	136	8	0	0	0	0	104	176	1,232
Division 22	336	328	368	344	296	192	168	176	272	320	536	592	408	4,336
Division 21	0	0	32	64	0	180	96	176	168	160	168	232	352	1,628
Totals	568	456	576	592	456	508	272	352	440	480	704	928	1,088	7,420

## Industrial Injuries (lost work hours)



# Rail Vehicle Accidents & Major Incidents

## May 2014

Repair Costs	May-13	Jun-13	Jul-13	Aug-13	Sep-13	Oct-13	Nov-13	Dec-13	Jan-14	Feb-14	Mar-14	Apr-14	May-14	13-Month Period
Blue/Expo Line	\$11,700	\$4,926	\$14,951	\$2,338	\$3,700	\$11,475	\$13,838	\$0	\$8,370	\$15,618	\$13,690	\$72,961	\$9,463	\$183,030
Red/Purple Line	\$0	\$0	\$0	\$1,358	\$0	\$0	\$0	\$0	\$0	\$0	\$356	\$0	\$0	\$1,714
Green Line	\$0	\$0	\$0	\$0	\$0	\$0	\$0	\$1,008	\$0	\$0	\$0	\$0	\$0	\$1,008
Gold Line	\$261	\$8,220	\$0	\$537	\$0	\$0	\$0	\$0	\$0	\$0	\$714	\$0	\$0	\$9,732
<b>Totals</b>	<b>\$11,961</b>	<b>\$13,146</b>	<b>\$14,951</b>	<b>\$4,233</b>	<b>\$3,700</b>	<b>\$11,475</b>	<b>\$13,838</b>	<b>\$1,008</b>	<b>\$8,370</b>	<b>\$15,618</b>	<b>\$14,760</b>	<b>\$72,961</b>	<b>\$9,463</b>	<b>\$195,484</b>

Rail Vehicle Accident Costs - May 2014				
Date	Incident #	Problem Code	Incident Description	Cost
Metro Blue/Expo Line				
5/8/14	2453986	Train vs. Object	A 10-71 was reported at Griffith and Washington, Track 2 Southbound.	\$ 683
5/16/14	2457197	Train vs. Object	A 10-71 was reported at Firestone station, broken windshield.	\$ 893
5/21/14	2458957	Train vs. Vehicle	A 10-73 was reported at Washington, Track 2 Southbound.	\$ 1,134
5/21/14	2459128	Train vs. Vehicle	A 10-73 was reported at Washington and Long Beach.	\$ -
5/25/14	2460311	Train vs. Vehicle	A 10-73 was reported, accident at USC Watt way SB on track.	\$ 6,123
5/27/14	2460948	Train vs. Vehicle	A 10-73 was reported at Washington and Los Angeles, Track 2 Southbound.	\$ 630
<b>Grand Total</b>				<b>\$ 9,463</b>
(10-71) = Train vs. Object, (10-72) = Train vs. Pedestrian, (10-73) = Train vs. Vehicle (10-74) = Train vs. MTA Vehicle, (10-75) = Derailment				

**Note:** Repair costs are only the expenses captured during the time period of the report. Actual costs may be significantly higher, if repairs are spread out over several months.

# Service Delivery May 2014

## May 2014 - Service Delivery

### Blue/Expo Line Fleet Size: 92

<u>Pull Out</u>	<u>Vehicles Required</u>	<u>Average Available</u>	<u>% Up (Down)</u>
Weekday:	78	78	100%
Weekend:	60	65	108%
Late Pullouts: 3*			
<b>Monthly Mileage:</b>	<b>653,769</b>		

### Red/Purple Line Fleet Size: 104

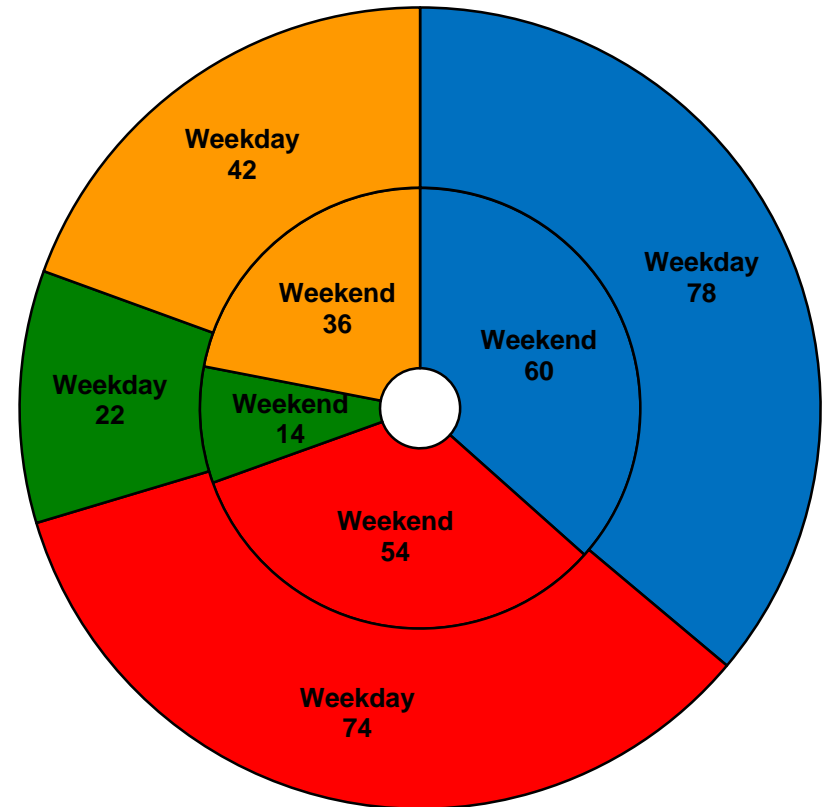
<u>Pull Out</u>	<u>Vehicles Required</u>	<u>Average Available</u>	<u>% Up (Down)</u>
Weekday:	74	81	109%
Weekend:	54	69	128%
Late Pullouts: 0*			
<b>Monthly Mileage:</b>	<b>653,492</b>		

### Green Line Fleet Size: 29

<u>Pull Out</u>	<u>Vehicles Required</u>	<u>Average Available</u>	<u>% Up (Down)</u>
Weekday:	22	22	100%
Weekend:	14	17	121%
Late Pullouts: 0*			
<b>Monthly Mileage:</b>	<b>231,836</b>		

### Gold Line Fleet Size: 50

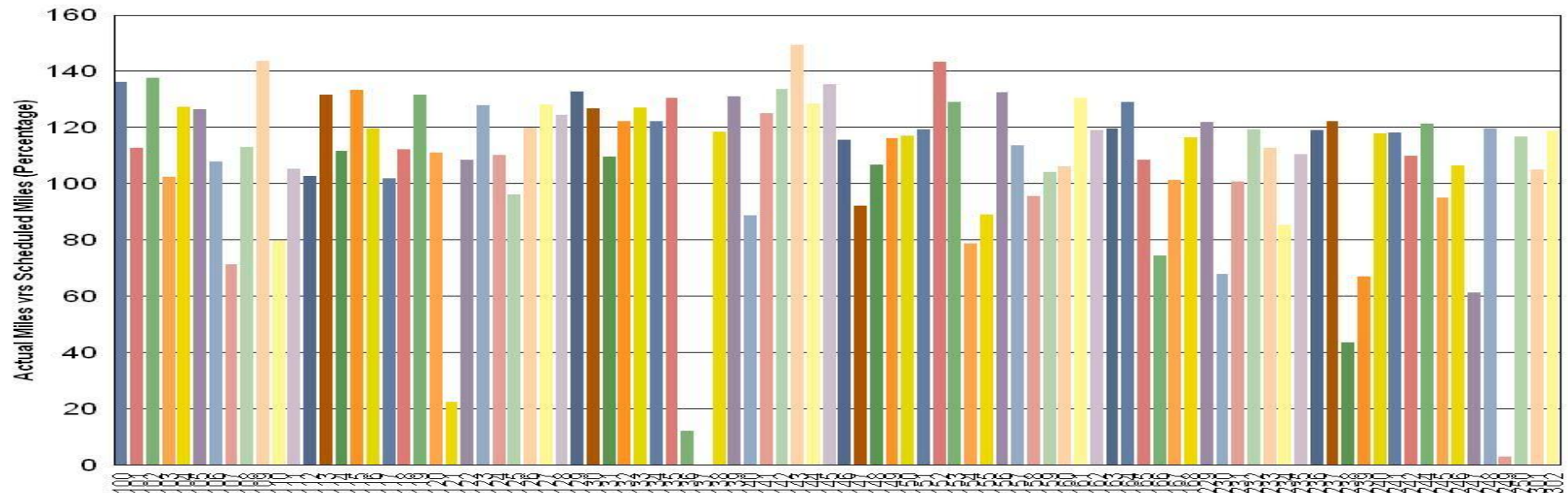
<u>Pull Out</u>	<u>Vehicles Required</u>	<u>Average Available</u>	<u>% Up (Down)</u>
Weekday:	42	43	102%
Weekend:	36	41	114%
Late Pullouts: 0*			
<b>Monthly Mileage:</b>	<b>334,815</b>		



■ Blue/Expo Line ■ Red/Purple Line ■ Green Line ■ Gold Line

# Vehicle Utilization May 2014

## Metro Blue/Expo Line



### Blue/Expo Line:

**Car # 121** Out of service for Exterior Paint, Interior Graffiti Refurbishment and seat removal program / Overhaul.

**Car # 136** Out of service for troubleshooting and repair due to repeat failures causing multiple delays on the mainline.

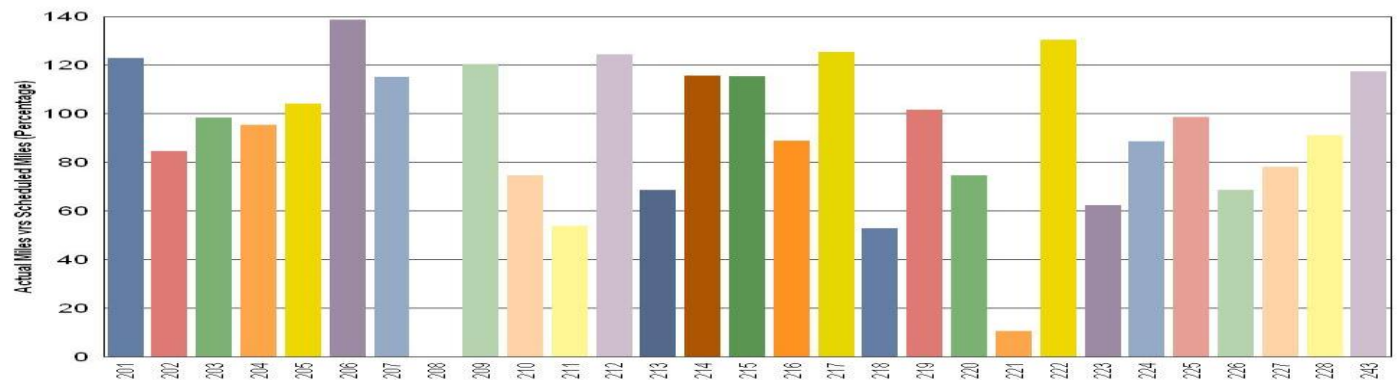
**Car # 137** Out of service due to major accident repair.

**Car # 249** Out of service for troubleshooting and repair due to repeat failures causing multiple delays on the mainline.

## Metro Green Line

### Green Line:

**Car # 208 & 221** On hold for articulation cables.



*Note: Percentage includes an average 4% mileage deduction for yard mileage and vehicle testing.*

# Vehicle Utilization May 2014

## Metro Red/Purple Line

### Red/Purple Line:

The following cars were out of service due to:

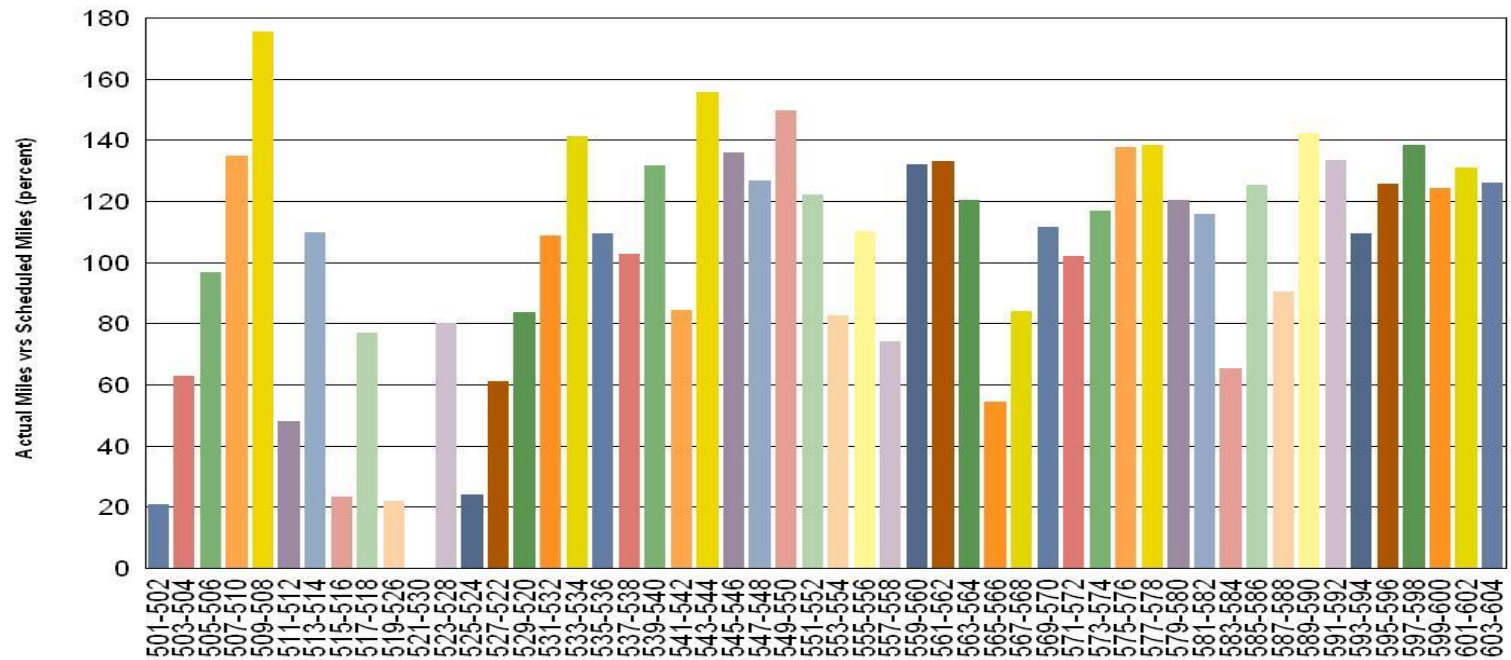
**Car # 501-502** HVAC Project and Emergency Brake Application issue

**Car # 515-516** 22.5K inspection and repair work orders

**Car # 519-526** Propulsion issue

**Car# 521-530** Floor replacement project

**Car# 525-524** Propulsion issue

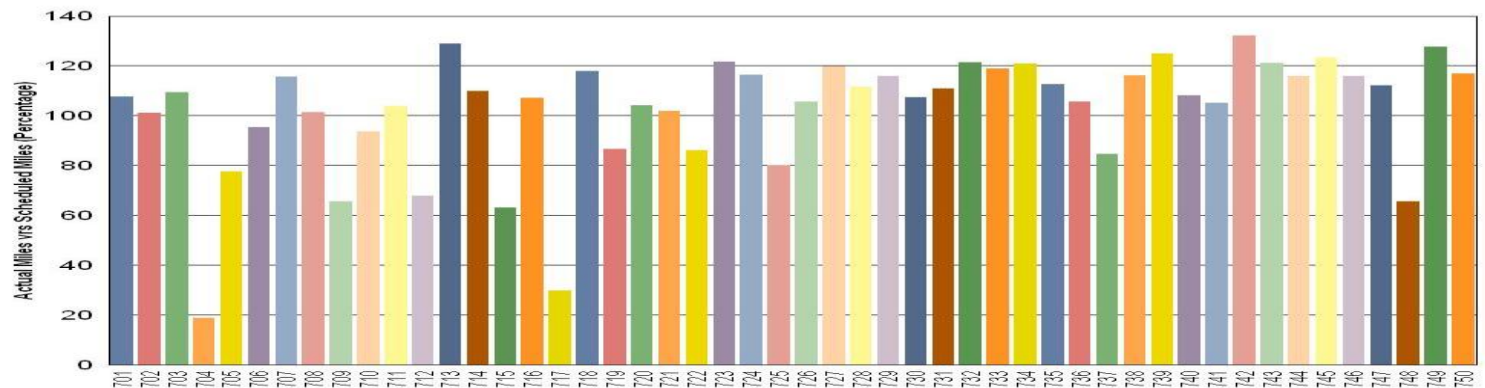


## Metro Gold Line

### Gold Line:

**Car # 704** Out of service due to repeated ATP failure.

**Car # 717** Out of service due to melted wiring creating repair difficulties.

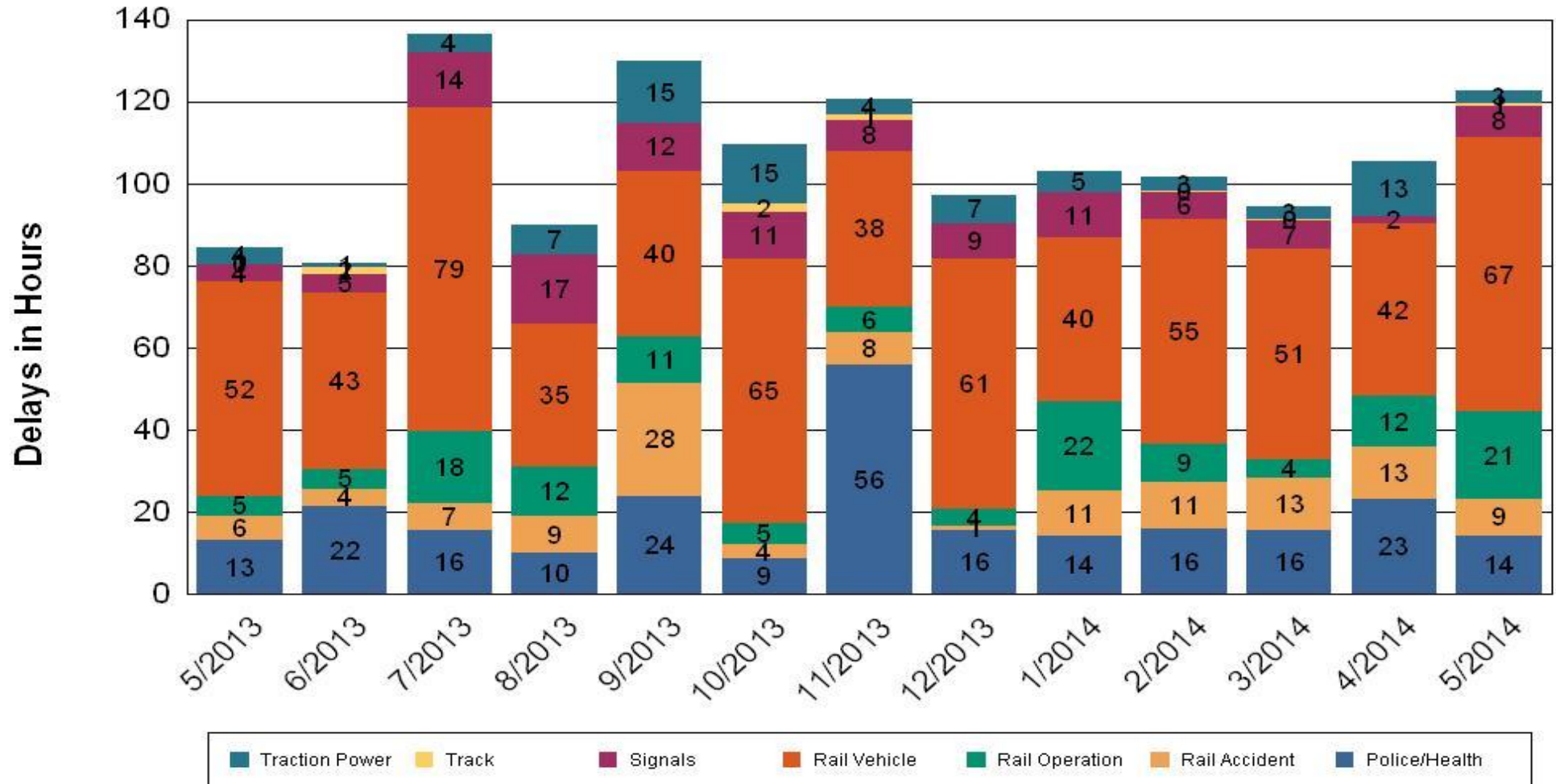




# All Train Delay (Hours) May 2014

## All Train Delays

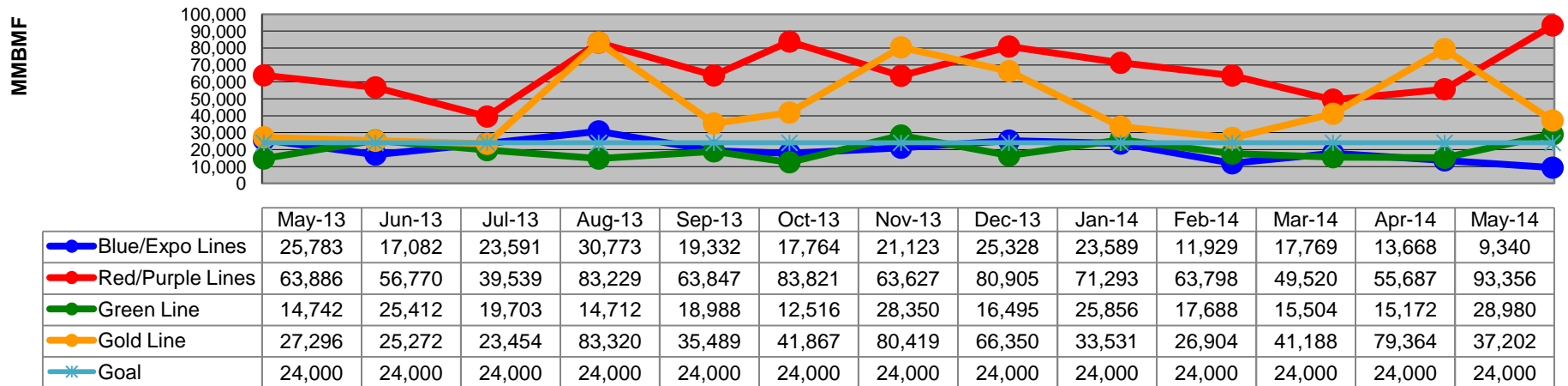
Totals Include the delay to all trains involved (not just the primary incident)



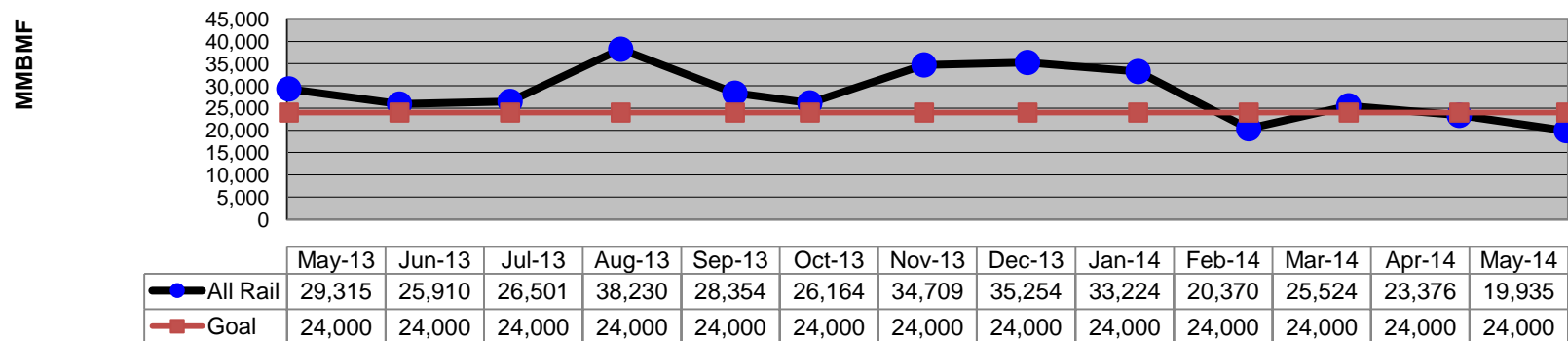


# Mean Miles Between Failures (Major) Year to Date – May 2014

## Mean Miles Between Major Failures (by line)



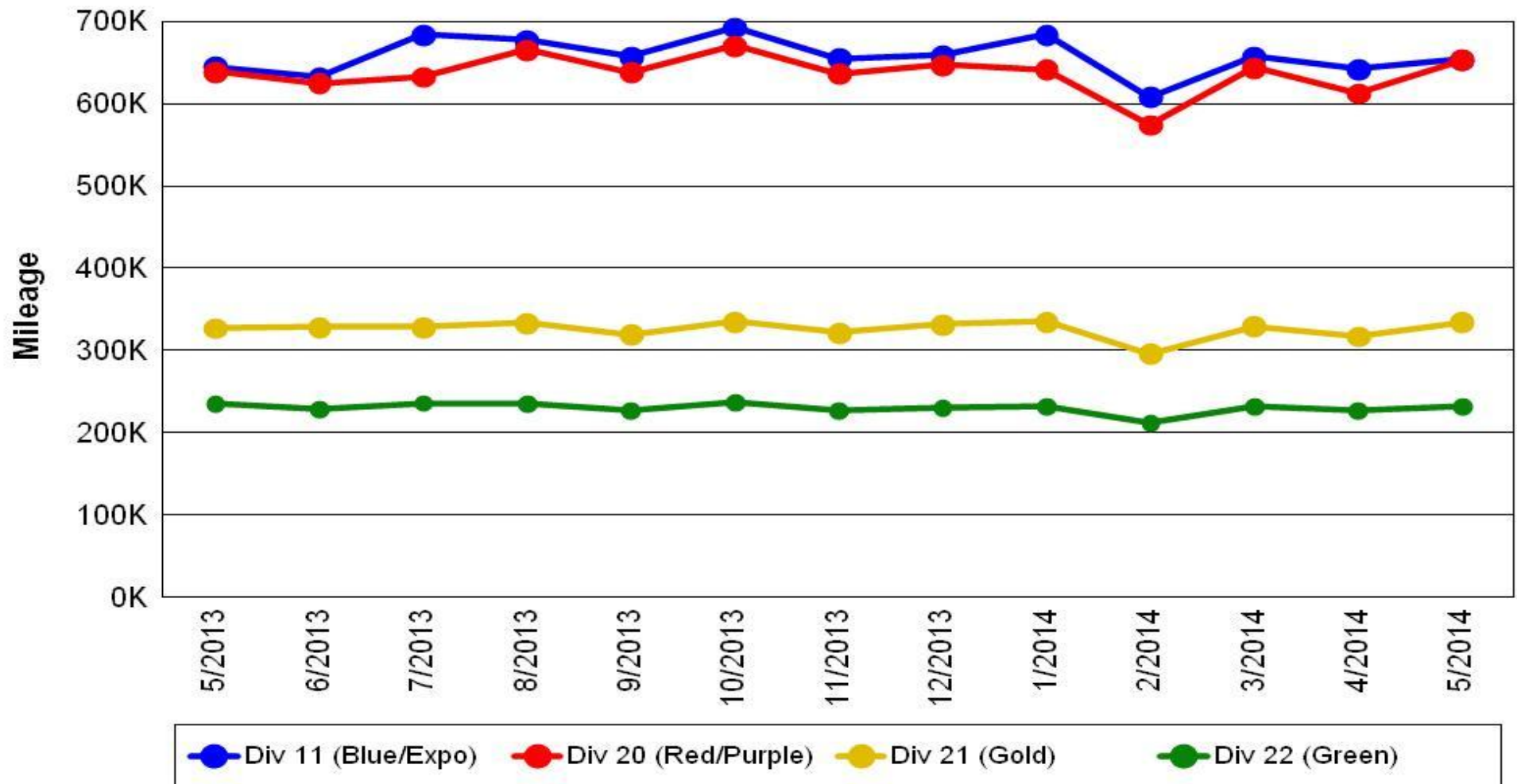
## Mean Miles Between Major Failures (all)



# Mileage Between Data Range (by month)

## May 2014

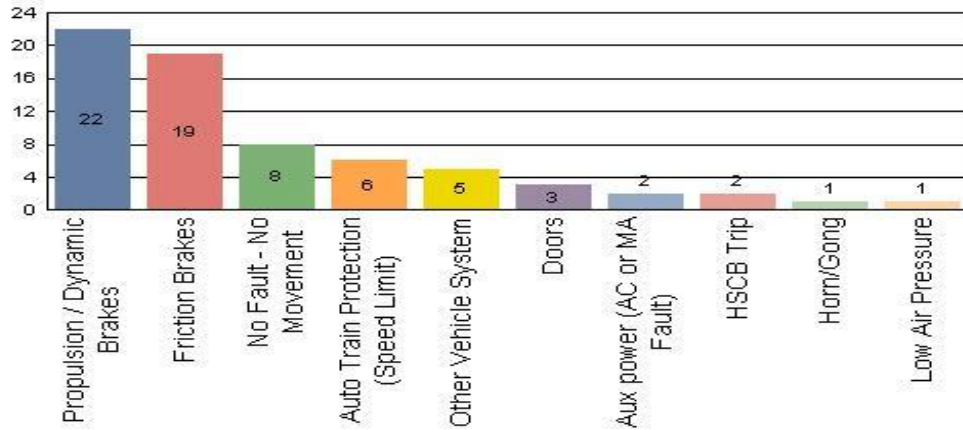
### Rail Division Monthly Mileage



# Top Incident Categories May 2014

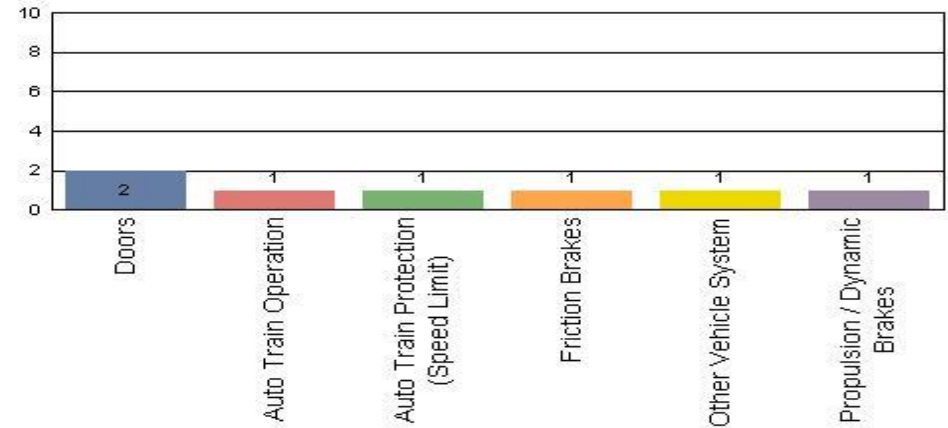
## Metro Blue/Expo Line

Top Incident Categories



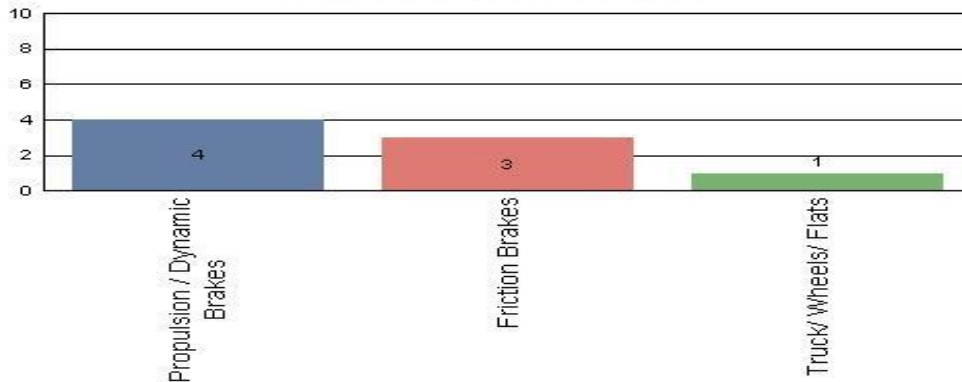
## Metro Red/Purple Line

Top Incident Categories



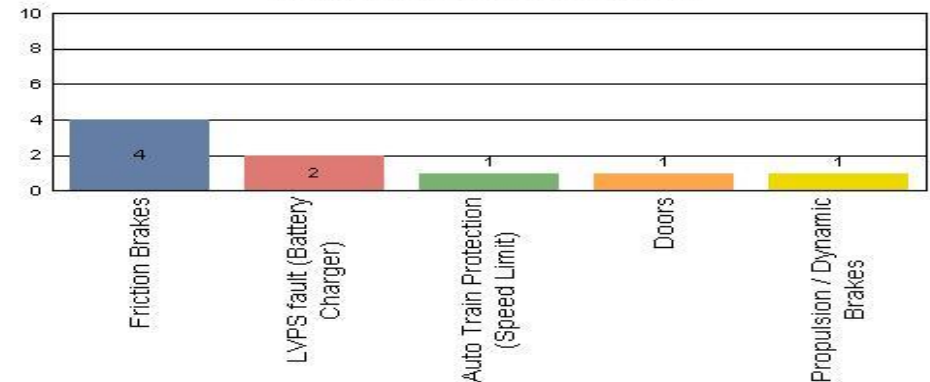
## Metro Green Line

Top Incident Categories



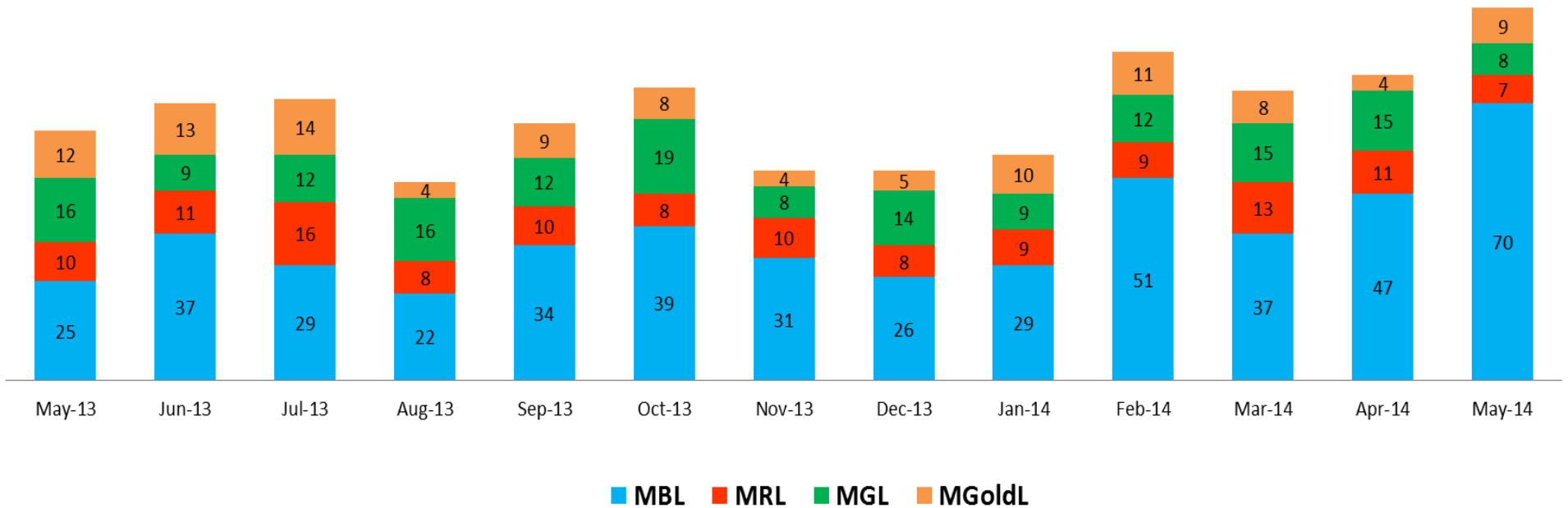
## Metro Gold Line

Top Incident Categories



# Major Incidents May 2014

## Numbers of Major Incidents by Line



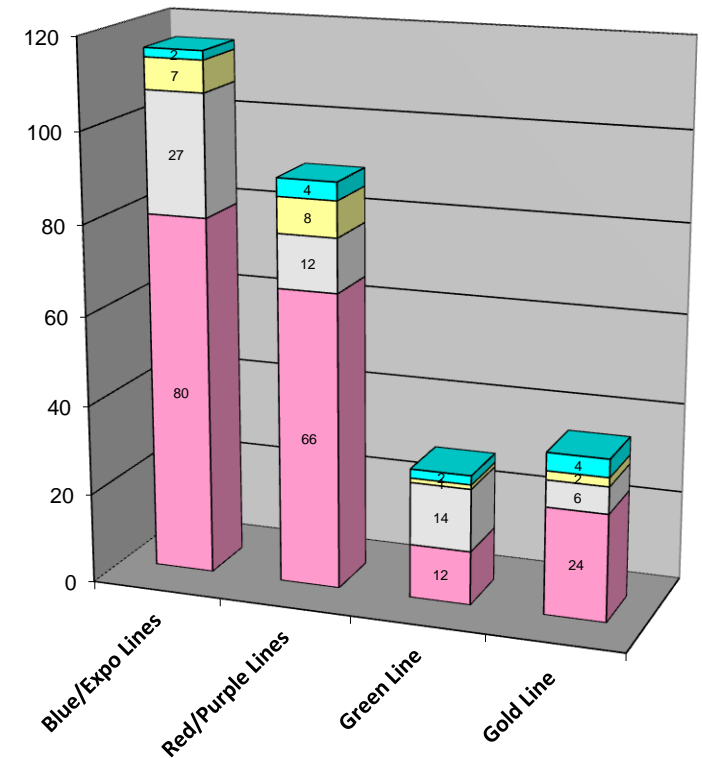
# Preventive Maintenance Compliance

## May 2014

PM Compliance	May-13	Jun-13	Jul-13	Aug-13	Sep-13	Oct-13	Nov-13	Dec-13	Jan-14	Feb-14	Mar-14	Apr-14	May-14
Blue/Expo Lines	100%	100%	100%	100%	100%	100%	100%	100%	100%	100%	100%	100%	100%
Red/Purple Lines	100%	100%	100%	100%	100%	100%	100%	100%	100%	100%	100%	100%	100%
Green Line	91%	100%	100%	100%	100%	96%	92%	100%	100%	100%	100%	100%	100%
Gold Line	100%	100%	100%	100%	100%	100%	100%	100%	100%	100%	100%	100%	100%

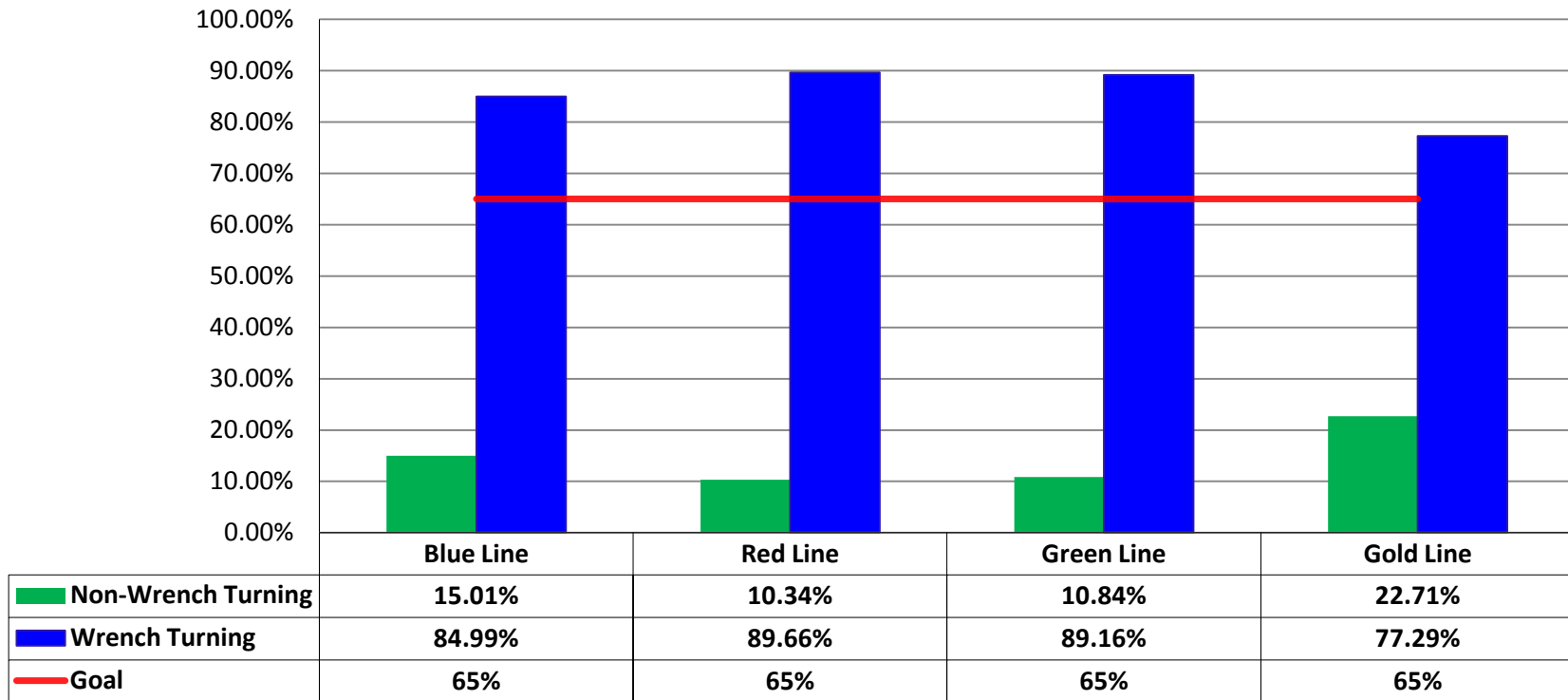
Number of Preventive Maintenance Inspections - May 2014					
Line	A level	B level	C level	D level	Totals
Blue/Expo Lines	80	27	7	2	116
Red/Purple Lines	66	12	8	4	90
Green Line	12	14	1	2	29
Gold Line	24	6	2	4	36
Totals:	182	59	18	12	271

Explanation of PM Inspection levels		Miles			
Line	Type	A level	B level	C level	D level
Blue/Expo Lines	P865/P2020	5,000	15,000	30,000	60,000
Blue/Expo Lines	P2000	7,500	22,500	45,000	90,000
Red/Purple Lines	A650	7,500	22,500	45,000	90,000
Green Line	P2000	7,500	22,500	45,000	90,000
Gold Line	P2550	10,000	30,000	60,000	120,000



# RFS Wrench Turning May 2014

## RFS - Wrench Turning May 2014

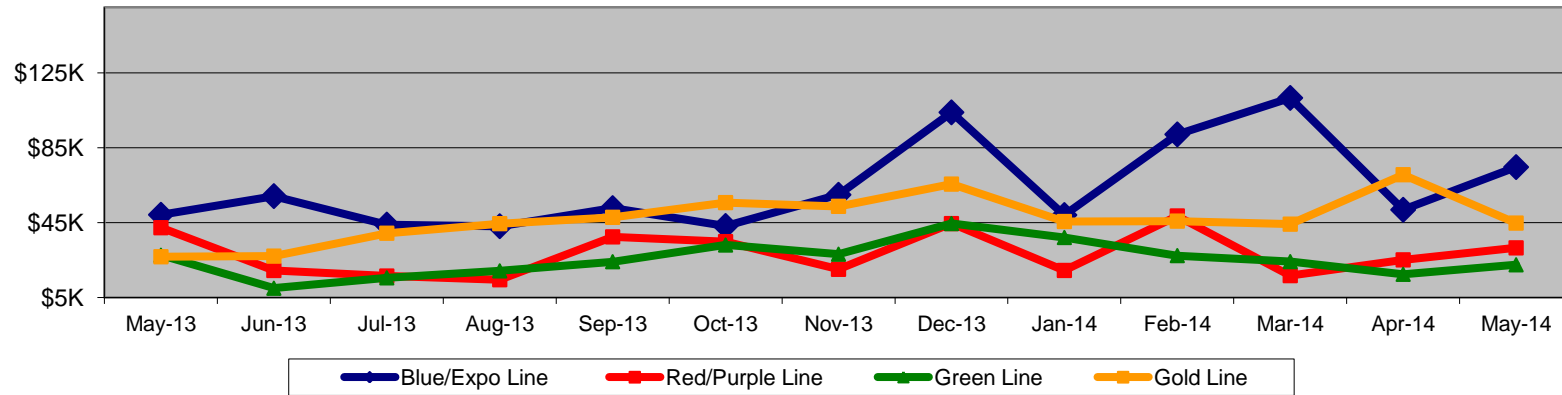


# Vandalism & Graffiti Report

## May 2014

Graffiti Costs

	May-13	Jun-13	Jul-13	Aug-13	Sep-13	Oct-13	Nov-13	Dec-13	Jan-14	Feb-14	Mar-14	Apr-14	May-14	13-Month Period
Blue/Expo Line	\$49K	\$59K	\$44K	\$43K	\$53K	\$43K	\$60K	\$104K	\$49K	\$92K	\$112K	\$52K	\$75K	\$834K
Red/Purple Line	\$42K	\$19K	\$16K	\$14K	\$37K	\$35K	\$20K	\$44K	\$19K	\$49K	\$17K	\$25K	\$32K	\$371K
Green Line	\$28K	\$10K	\$15K	\$19K	\$24K	\$33K	\$28K	\$44K	\$37K	\$27K	\$24K	\$17K	\$22K	\$330K
Gold Line	\$27K	\$27K	\$39K	\$44K	\$48K	\$56K	\$54K	\$66K	\$46K	\$46K	\$44K	\$71K	\$45K	\$611K
Totals:	\$146K	\$116K	\$115K	\$121K	\$162K	\$167K	\$162K	\$258K	\$151K	\$214K	\$197K	\$165K	\$173K	\$2,146K



May 2014 Vandalism & Graffiti - All Rail				
	Qty	Labor	Materials	Totals
Windows replaced	181	\$ 20,664	\$ 27,270	\$ 47,934
Vandal Shields	855	\$ 24,602	\$ 14,017	\$ 38,619
Seats Cleaned	604	\$ 3,319	\$ -	\$ 3,319
Seats Replaced	519	\$ 16,191	\$ 20,516	\$ 36,707
Graffiti removal - other	908	\$ 18,156	\$ 1,337	\$ 19,493
Repainting panels	293	\$ 21,546	\$ 5,708	\$ 27,254
<b>Totals</b>	<b>3,360</b>	<b>\$ 104,478</b>	<b>\$ 68,848</b>	<b>\$ 173,326</b>



# Graffiti Pictures May 2014

## Blue Line



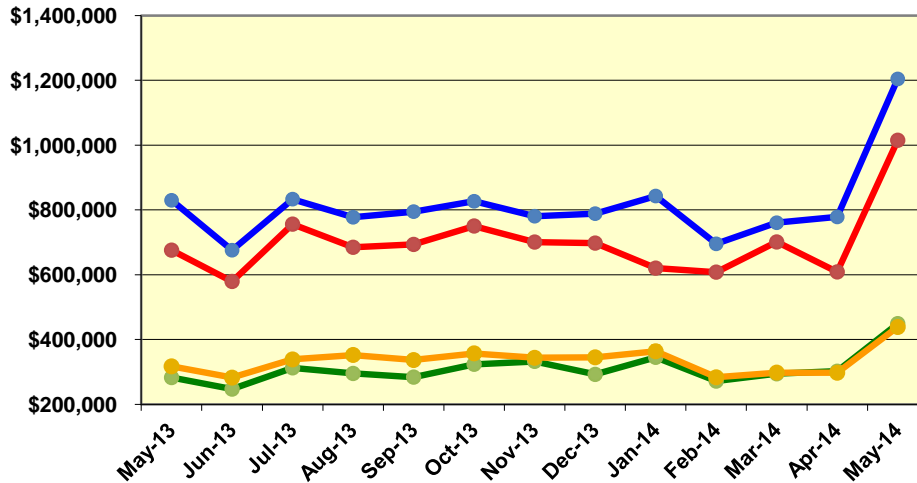
## Green Line



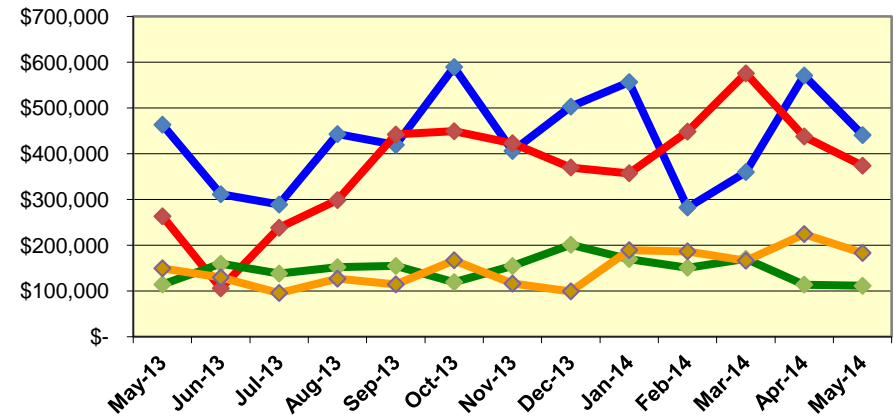
# Labor and Material Costs

## May 2014

### Labor Costs



### Material Costs



May-13	Jun-13	Jul-13	Aug-13	Sep-13	Oct-13	Nov-13	Dec-13	Jan-14	Feb-14	Mar-14	Apr-14	May-14
--------	--------	--------	--------	--------	--------	--------	--------	--------	--------	--------	--------	--------

### LABOR COSTS

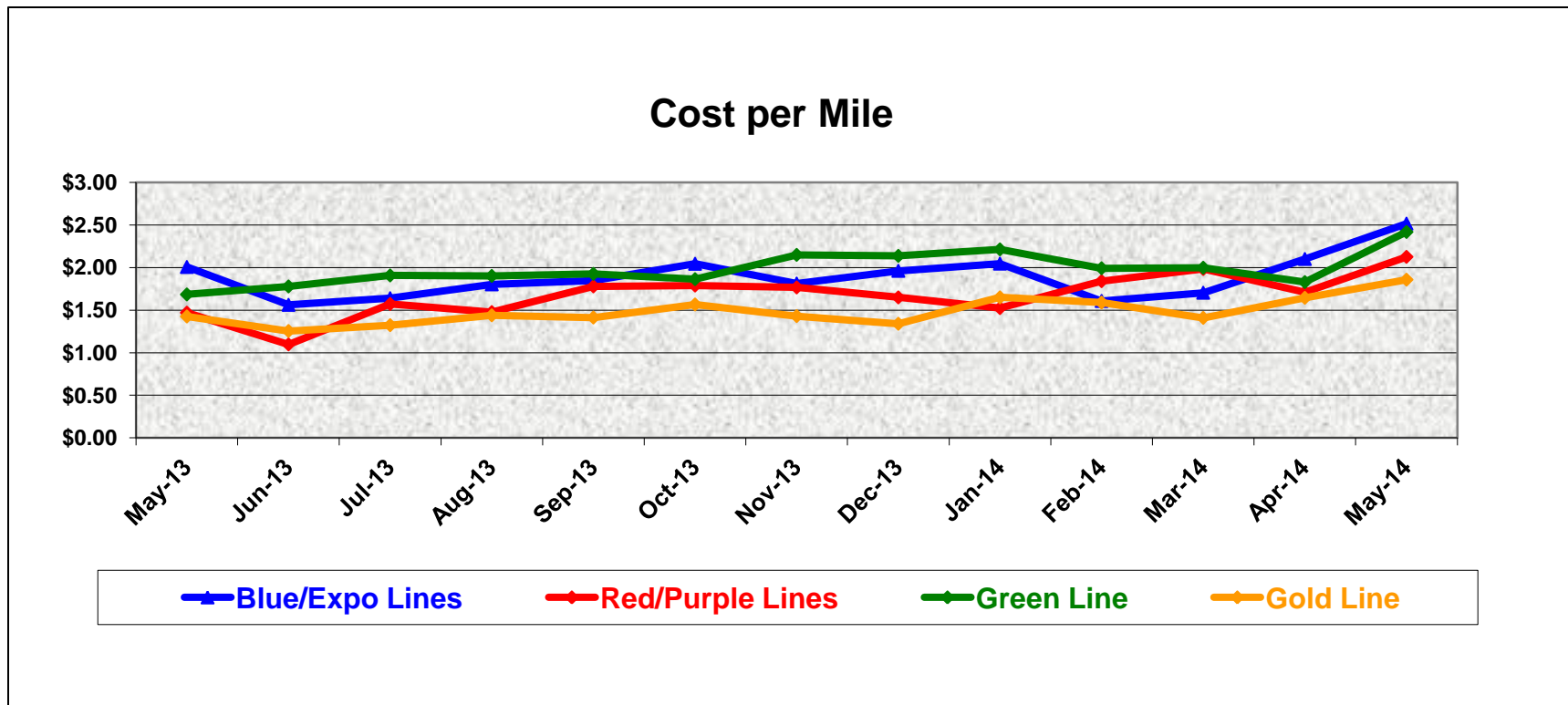
Blue/Expo Lines	\$ 829,721	\$ 675,752	\$ 833,333	\$ 777,432	\$ 794,828	\$ 826,769	\$ 780,678	\$ 788,589	\$ 842,979	\$ 695,394	\$ 760,511	\$ 778,469	\$ 1,204,234
Red/Purple Lines	\$ 675,950	\$ 579,395	\$ 756,262	\$ 684,850	\$ 693,597	\$ 750,452	\$ 700,975	\$ 697,759	\$ 620,440	\$ 608,097	\$ 701,156	\$ 608,816	\$ 1,015,092
Green Line	\$ 282,841	\$ 247,129	\$ 312,740	\$ 295,374	\$ 284,105	\$ 323,749	\$ 332,737	\$ 292,482	\$ 345,262	\$ 271,877	\$ 294,381	\$ 302,213	\$ 449,117
Gold Line	\$ 317,387	\$ 282,541	\$ 338,719	\$ 352,473	\$ 336,795	\$ 357,408	\$ 343,700	\$ 345,170	\$ 363,886	\$ 283,563	\$ 298,069	\$ 297,634	\$ 438,759
Totals	\$ 2,105,899	\$ 1,784,817	\$ 2,241,054	\$ 2,110,129	\$ 2,109,325	\$ 2,258,378	\$ 2,158,090	\$ 2,123,999	\$ 2,172,567	\$ 1,858,931	\$ 2,054,117	\$ 1,987,132	\$ 3,107,202

### MATERIAL COSTS

Blue/Expo Lines	\$ 463,311	\$ 311,415	\$ 288,894	\$ 442,803	\$ 419,133	\$ 589,324	\$ 406,032	\$ 502,761	\$ 556,457	\$ 282,466	\$ 359,845	\$ 570,775	\$ 440,576
Red/Purple Lines	\$ 263,158	\$ 105,805	\$ 238,207	\$ 298,670	\$ 441,927	\$ 449,033	\$ 422,849	\$ 369,819	\$ 357,244	\$ 448,225	\$ 575,495	\$ 437,612	\$ 373,815
Green Line	\$ 114,311	\$ 159,526	\$ 138,190	\$ 152,243	\$ 154,678	\$ 119,411	\$ 154,582	\$ 201,035	\$ 169,759	\$ 150,881	\$ 170,250	\$ 113,979	\$ 111,344
Gold Line	\$ 149,564	\$ 129,742	\$ 95,664	\$ 126,942	\$ 114,461	\$ 167,128	\$ 116,167	\$ 99,267	\$ 189,310	\$ 186,640	\$ 166,216	\$ 224,430	\$ 183,115
Totals	\$ 990,344	\$ 706,488	\$ 760,956	\$ 1,020,659	\$ 1,130,199	\$ 1,324,896	\$ 1,099,631	\$ 1,172,883	\$ 1,272,769	\$ 1,068,212	\$ 1,271,807	\$ 1,346,796	\$ 1,108,849

# Cost Per Mile May 2014

Cost per mile:	May-13	Jun-13	Jul-13	Aug-13	Sep-13	Oct-13	Nov-13	Dec-13	Jan-14	Feb-14	Mar-14	Apr-14	May-14
Blue/Expo Lines	\$2.01	\$1.56	\$1.64	\$1.80	\$1.85	\$2.04	\$1.81	\$1.96	\$2.05	\$1.61	\$1.70	\$2.10	\$2.52
Red/Purple Lines	\$1.47	\$1.10	\$1.57	\$1.48	\$1.78	\$1.79	\$1.77	\$1.65	\$1.52	\$1.84	\$1.98	\$1.71	\$2.13
Green Line	\$1.68	\$1.78	\$1.91	\$1.90	\$1.93	\$1.86	\$2.15	\$2.14	\$2.21	\$1.99	\$2.00	\$1.83	\$2.42
Gold Line	\$1.43	\$1.25	\$1.32	\$1.44	\$1.41	\$1.57	\$1.43	\$1.34	\$1.65	\$1.59	\$1.41	\$1.64	\$1.86



# ATU Absences vs. Overtime

## May 2014

ABSENCE TYPE and HOURS	3940 Admin.	3941 Blue	3942 Red	3943 Green	3944 Gold	3947 Expo	Total
AWP-ABSENT W/O PERMISSION	-	120	8	41	-	-	169
BER-BEREAVEMENT	-	24	48	40	-	-	112
CTO-COMPENSATORY TIME OFF	64	409	802	180	238	20	1,713
CUT-EMPLOYEE LEAVES EARLY	-	-	0	-	-	-	0
CVA - CASUAL VACATION	24	200	281	76	160	-	741
DSL-DISABILITY LEAVE/LONG	-	584	168	184	184	128	1,248
EFH-EMG. FLOAT HOL.	8	16	128	24	-	-	176
ETO-EXCUSED TIME OFF	3	67	40	13	88	3	213
FMI-FAM IND INJURY	-	-	184	-	288	-	472
FML-FAMILY CARE LEAVE	-	550	368	112	140	56	1,226
FMS-FAMILY LEAVE SICK	-	93	190	64	16	-	363
HLF-HOLIDAY FLOATING	80	320	630	144	168	20	1,362
HNP-HOLIDAY NOT PAID	-	48	24	-	-	-	72
HOL-HOLIDAY LEGAL	56	480	576	152	136	16	1,416
II-INDUSTRIAL INJURY	-	32	8	176	-	-	216
JUR-JURY DUTY	-	8	48	-	-	-	56
LC1-LABOR CODE 233	12	216	313	92	96	-	729
LTI-OCCPIL/LONGTRM INJ LEAVE	-	120	168	232	352	-	872
MLN-MILITARY ABSENCE-UNPAID	-	8	-	-	-	-	8
OWP-OFF WITH PERMISSION	-	-	30	-	-	-	30
RTO-REQUESTED TIME OFF-NO PAY	-	28	-	6	1	1	37
SCK-SICK PAY	-	382	168	236	40	-	826
SCW-SICK WITHOUT PAY	-	8	48	172	8	-	236
SPN-SCHOOL PARTNER NOT PAID	-	-	-	-	8	-	8
SUS-DISCIPLINARY SUSPENSION	-	-	-	40	-	-	40
TAR-TARDY	-	2	0	2	0	-	5
VAC-VACATION	32	614	726	396	336	31	2,135
<b>Total Absence Hours</b>	<b>279</b>	<b>4,328</b>	<b>4,957</b>	<b>2,382</b>	<b>2,260</b>	<b>275</b>	<b>14,480</b>
ATU Number of Work Force (assigned)	9	120	112	49	49	5	344
Full Work Force hours/month	1,560	20,796	19,410	8,492	8,492	867	59,615
<b>Absence as a % of Work Force</b>	<b>18%</b>	<b>21%</b>	<b>26%</b>	<b>28%</b>	<b>27%</b>	<b>32%</b>	<b>24%</b>

OVERTIME TYPE and HOURS	3940 Admin.	3941 Blue	3942 Red	3943 Green	3944 Gold	3947 Expo	Total
CTB-COMPENSATORY TIME TO BANK	-	42	63	10	7	-	122
OTP-PREM OVERTIME	715	5,579	4,782	2,188	1,738	240	15,241
WLO-Worked Lunch Overtime	44	158	195	146	94	5	640
<b>Total Overtime Hours</b>	<b>758</b>	<b>5,778</b>	<b>5,039</b>	<b>2,343</b>	<b>1,838</b>	<b>245</b>	<b>16,003</b>
<b>Overtime as a % of Work Force</b>	<b>49%</b>	<b>28%</b>	<b>26%</b>	<b>28%</b>	<b>22%</b>	<b>28%</b>	<b>27%</b>
<b>FTE Calculation - Absence &amp; OT H</b>	<b>3940</b>	<b>3941</b>	<b>3942</b>	<b>3943</b>	<b>3944</b>	<b>3947</b>	<b>Total</b>
Absences FTE	2	25	29	14	13	2	84
OTP FTE	4	33	29	14	11	1	92
<b>FTE Difference</b>	<b>-2</b>	<b>-8</b>	<b>0</b>	<b>0</b>	<b>2</b>	<b>1</b>	<b>-8</b>



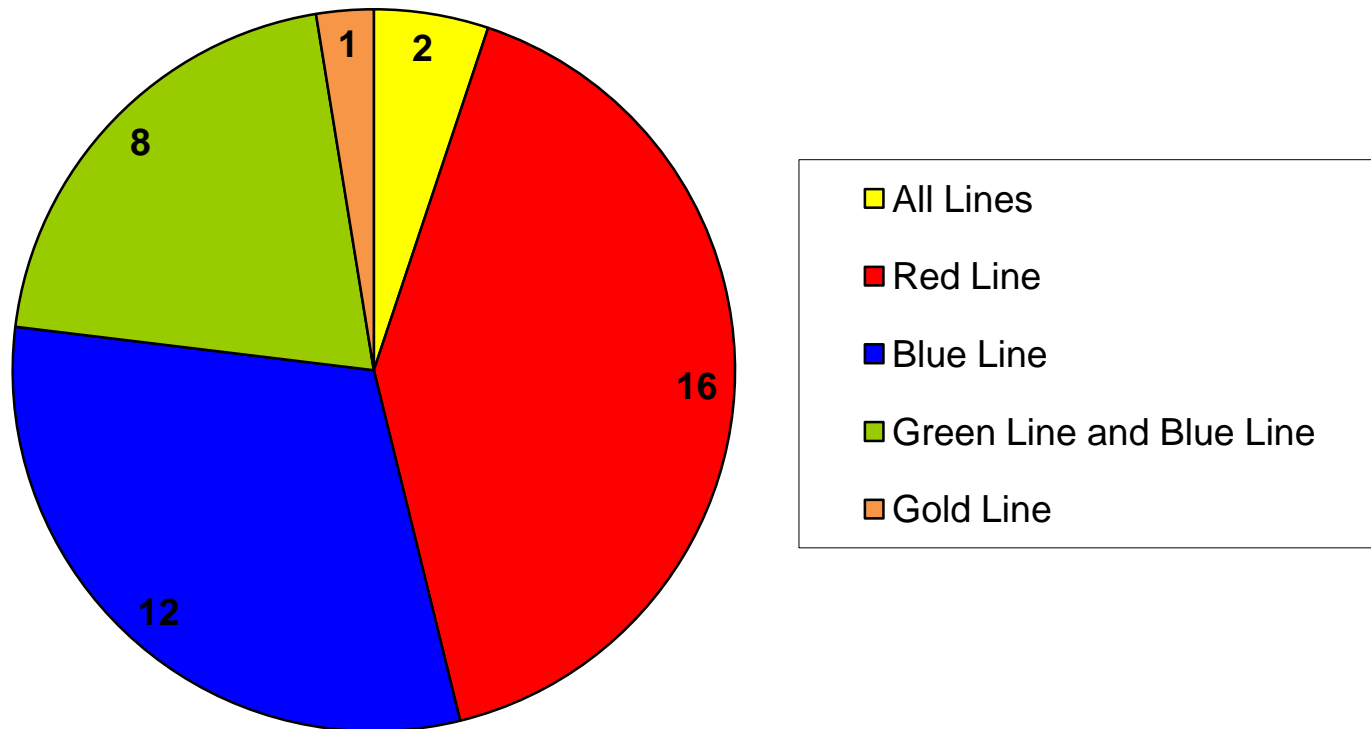
**Metro**

Note: Overtime also covers other required activities, including Training, Component Overhaul, and Special Events.

# Rail Vehicle Engineering Project Summary

## May 2014

### Engineering Technical Specifications 100% Completion - Total of 39 May 2014

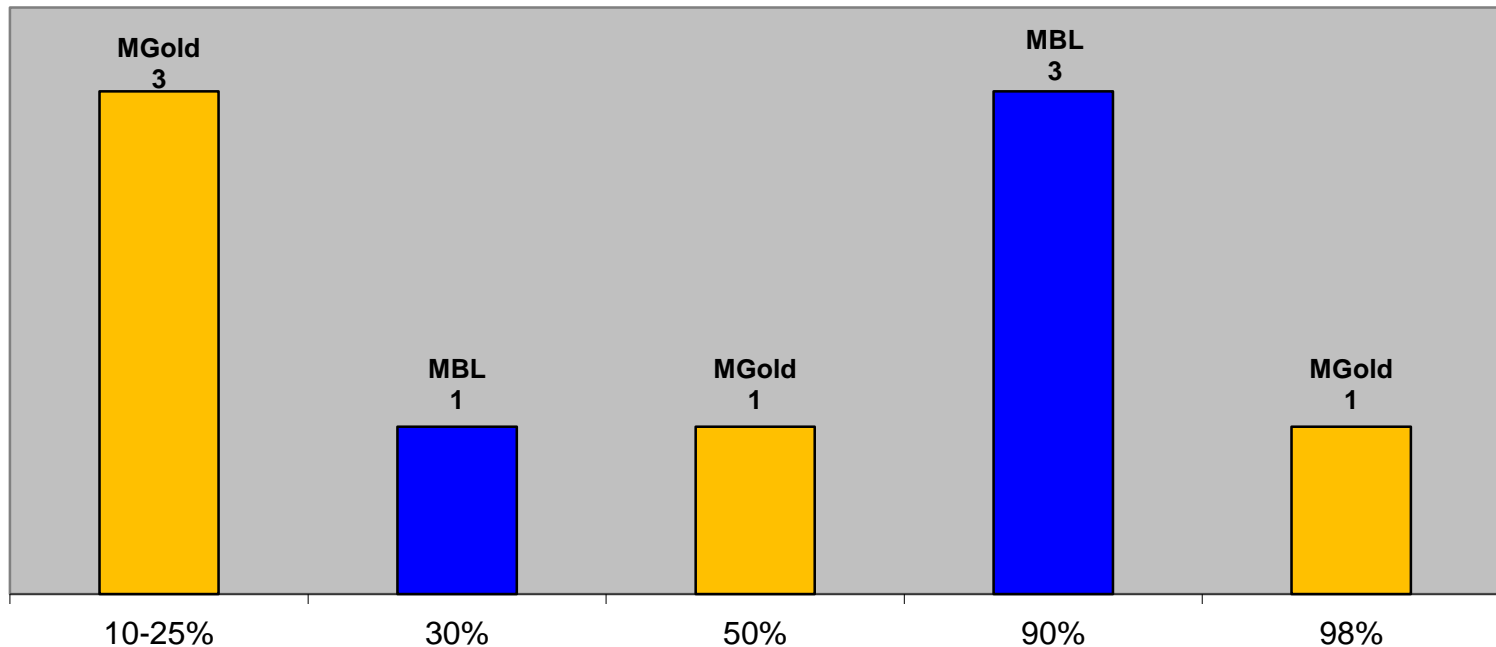


Details of specifications are available upon request.

# Rail Vehicle Engineering Project Summary (cont'd)

## May 2014

### Engineering Technical Specifications Less than 100% Completion - Total of 9 May 2014

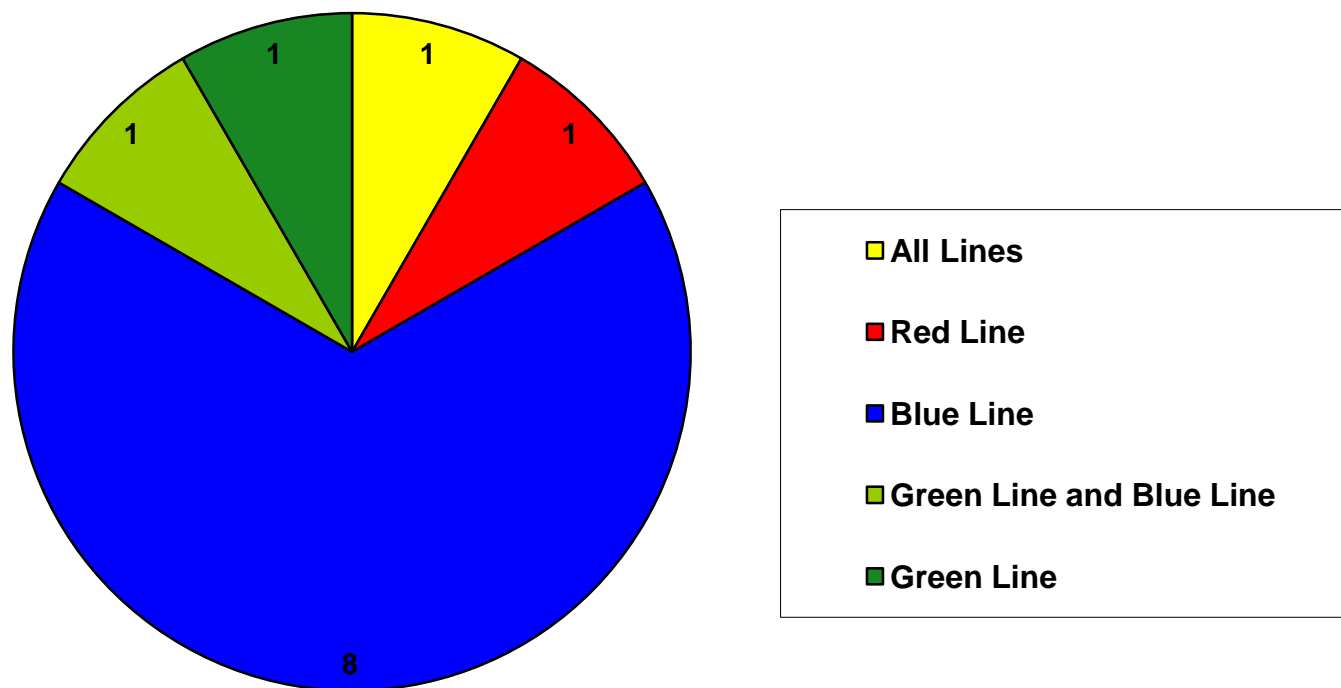


Details of specifications are available upon request.

# Rail Vehicle Engineering Project Summary (cont'd)

## May 2014

Engineering Projects  
100% Completion - Total of 12  
May 2014



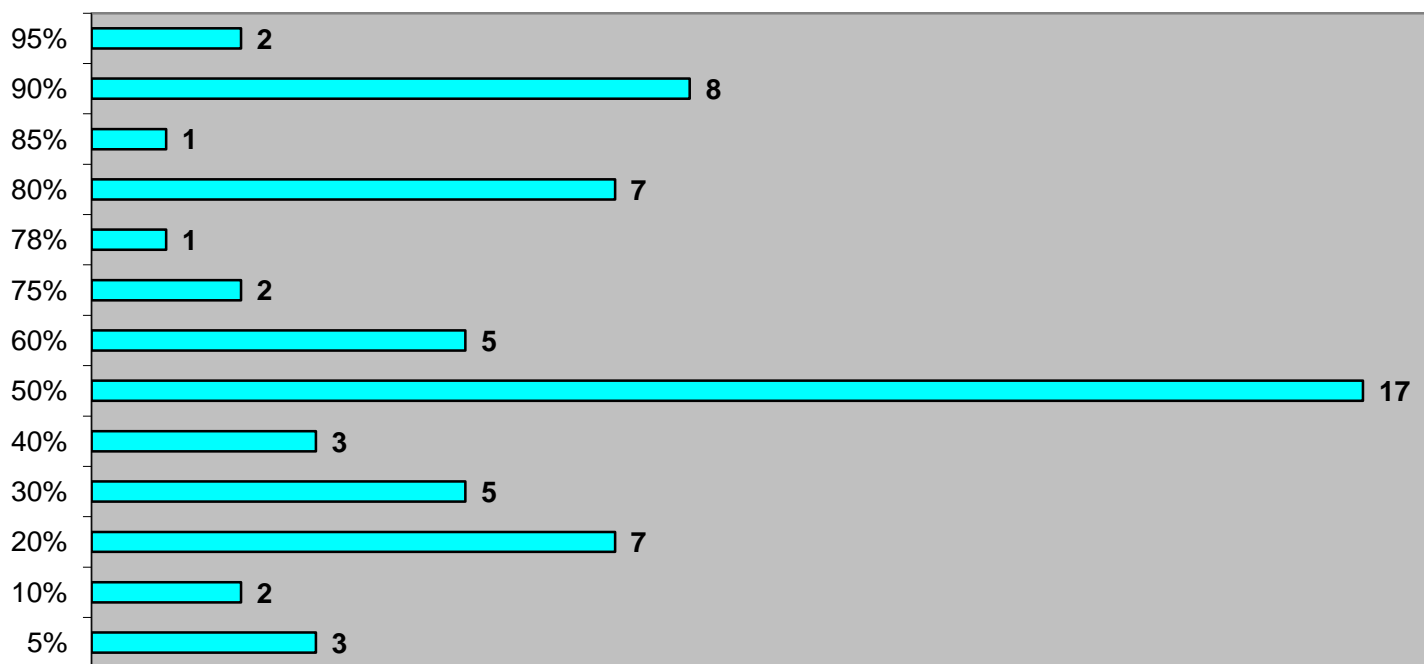
Details of projects are available upon request.



# Rail Vehicle Engineering Project Summary (cont'd)

## May 2014

### Engineering Projects Less than 100% Completion - Total of 63 - All Lines May 2014



Details of projects are available upon request.

# QA-Warranty Activities

## May 2014

- QA PMI Audits, Spot Checks, Unannounced Audits performed (32)
- On-Going, P2550 parts tracking: Contract Spares, Capital Spares status to ABI
- On-Going, Division Warranty Parts Claims Processing
- P2550 Support of analog converter valves; Overhaul Planned for July 2014
- P2550 Lamellar Seal removal **Project Complete**
- P2550 50 of 50 Cars have new profile connection beam installed. 50 of 50 Cars with replacement resilient pins and bushings and connection beam.
- A650 Base Buy & Option Car Fleet Warranty Truck Frame Mod Campaign 166 Trucks modified to date. MRL Warranty Cost Avoidance savings accrued to date \$2.4 million.
- MBL journal bearing replacement “C” truck program in progress
- MBL LED Destination sign program/ Modified Controller replacement in progress
- MBL/MGL Support of P2000 Air Compressor/ Air dryer
- On-Going Warranty-QA interest oversight & tracking: Overhauls / Mod Programs, (A650/P2000/P2020/865/P2550) Propulsion System, Master Controllers, Capacitor Banks, Air Compressors, Aux Power, Couplers, Gearboxes, Articulation Diaphragms, Friction Brakes, HPT's, Brake Resistor Grids, T/M's, MA's, HVAC, Doors, A/C Motors – (Blowers & Evaporators)

# RFS Instruction Department Activities

## May 2014

### Training classes completed during the month of May 2014

Description	Course Hours	Student Count	Training Hours
<b>Blue &amp; Expo Line Training - (P865/2020 &amp; P2000 LRV):</b>			
RFS 865/2020 VEHICLE SYSTEMS	40	6	240
RFS 865/2020 VEHICLE INTRO	16	6	96
<b>Total Blue Line Training (Hours):</b>			<b>336</b>
<b>Red Line Training (Breda A650 HRV):</b>			
RFS BRED A 650 MAINLINE DUTY, DEAD TOW AND VEHICLE RECOVERY	8	7	56
RFS BRED A 650 PREVNT MAINT INSP	40	8	320
RFS BRED A 650 PROPULSION ABB	8	8	64
<b>Total Red Line Training (Hours):</b>			<b>440</b>
<b>Green Line Training (P2000 LRVs):</b>			
RFS SIEMENS ML DUTY, DEAD TOW AND VEH REC (HANDS ON)	32	4	128
RFS 2-WEEK RAIL INTRODUCTION	80	2	160
<b>Total Green Line Training (Hours):</b>			<b>288</b>
<b>Gold Line Training (P2550 LRVs):</b>			
RFS ANSALDOBRED A 2550 A.T.P. & T.W.C.	32	5	160
RFS ANSALDOBRED A 2550 COUPLER	12	5	60
RFS 2-WEEK RAIL INTRODUCTION	80	1	80
<b>Total Gold Line Training (Hours):</b>			<b>300</b>
<b>Total RFS Instruction for the month of May 2014 (Hours):</b>			<b>1,364</b>

### Other Instruction Activities

Instructor Vacation and Holiday	80
Tunnel Rerailing Exercise and Preparation	40
P865/P2020 Curriculum, Administrative, and Technical Support	40
P2000 Curriculum, Administrative, and Technical Support	40
P2550 Curriculum, Administrative, and Technical Support	40
LATTC Curriculum Development (KSME)	80
<b>Total Other Instruction Activities</b>	<b>320</b>

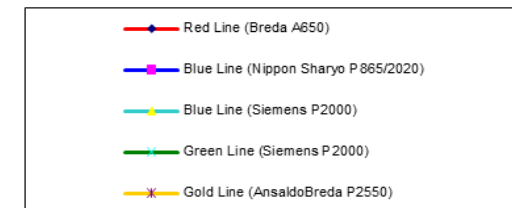
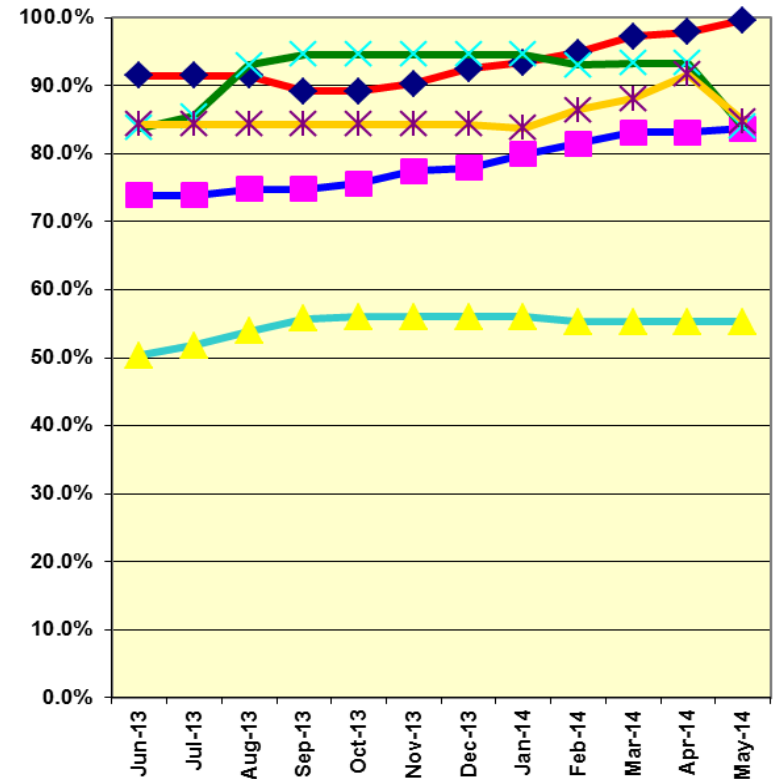
WWP Training provided by Transportation Instruction **284**

### Core Vehicle Training Completed: BLUE RED GREEN GOLD

Percentage of core vehicle training complete: **83.7%** **99.6%** **84.0%** **84.8%**  
 Siemens P2000 training complete: 55.3% N/A N/A N/A

Average Specialist Rail Experience Level in Years: **12.0** **10.3** **9.3** **9.1**

### Core Training Completed



Variations caused by new hires, employee transfers, & training completed