



Rail Fleet Services Monthly Report November 2014



Metro

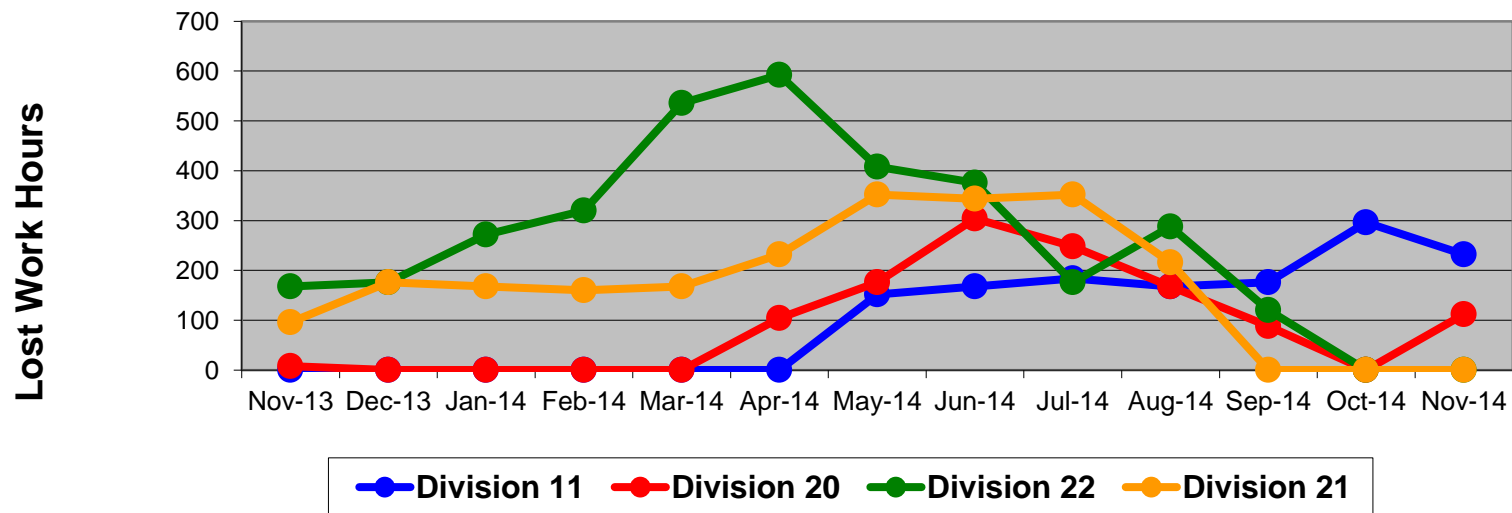
Table of Contents

| | | | |
|---|--|------|----|
| • | Safety | | |
| | - Industrial Injuries | Page | 3 |
| | - Rail Vehicle Accidents & Major Incidents | Page | 4 |
| • | Customer Service | | |
| | - Service Delivery – AM/PM Pull-Outs | Page | 5 |
| | - Vehicle Utilization – Blue Line & Green Line | Page | 6 |
| | - Vehicle Utilization – Red Line & Gold Line | Page | 7 |
| | - All Train Delay Incidents | Page | 8 |
| | - Mean Miles Between Failures (Major) | Page | 9 |
| | - Mileage Between Data Range (by month) | Page | 10 |
| • | Business Processes | | |
| | - Top Incident Categories | Page | 11 |
| | - Major Incidents | Page | 12 |
| | - Preventive Maintenance Compliance | Page | 13 |
| | - RFS Wrench Turning | Page | 14 |
| • | Finance | | |
| | - Vandalism & Graffiti Costs | Page | 15 |
| | - Graffiti Pictures | Page | 16 |
| | - Labor & Material Costs | Page | 17 |
| | - Cost per mile | Page | 18 |
| | - Absence vs. Overtime | Page | 19 |
| • | Growth | | |
| | - RFS Instruction Department Activities | Page | 20 |

Industrial Injuries – Lost Work Hours November 2013-2014

| | Nov-13 | Dec-13 | Jan-14 | Feb-14 | Mar-14 | Apr-14 | May-14 | Jun-14 | Jul-14 | Aug-14 | Sep-14 | Oct-14 | Nov-14 | 13-Month Period |
|-------------|--------|--------|--------|--------|--------|--------|--------|--------|--------|--------|--------|--------|--------|--------------------|
| Division 11 | 0 | 0 | 0 | 0 | 0 | 0 | 152 | 168 | 184 | 168 | 176 | 296 | 232 | 1,376 |
| Division 20 | 8 | 0 | 0 | 0 | 0 | 104 | 176 | 304 | 248 | 168 | 88 | 0 | 112 | 1,208 |
| Division 22 | 168 | 176 | 272 | 320 | 536 | 592 | 408 | 376 | 176 | 288 | 120 | 0 | 0 | 3,432 |
| Division 21 | 96 | 176 | 168 | 160 | 168 | 232 | 352 | 344 | 352 | 216 | 0 | 0 | 0 | 2,264 |
| Totals | 272 | 352 | 440 | 480 | 704 | 928 | 1,088 | 1,192 | 960 | 840 | 384 | 296 | 344 | 8,280 |

Industrial Injuries (lost work hours)



Rail Vehicle Accidents & Major Incidents

November 2013-2014

| Repair Costs | Nov-13 | Dec-13 | Jan-14 | Feb-14 | Mar-14 | Apr-14 | May-14 | Jun-14 | Jul-14 | Aug-14 | Sep-14 | Oct-14 | Nov-14 | 13-Month Period |
|-----------------|----------|---------|---------|----------|----------|----------|---------|----------|----------|---------|----------|----------|---------|--------------------|
| Blue/Expo Line | \$13,838 | \$0 | \$8,370 | \$15,618 | \$13,690 | \$72,961 | \$9,463 | \$9,964 | \$1,528 | \$207 | \$42,690 | \$12,945 | \$5,762 | \$207,036 |
| Red/Purple Line | \$0 | \$0 | \$0 | \$0 | \$356 | \$0 | \$0 | \$0 | \$0 | \$0 | \$0 | \$4,194 | \$0 | \$4,550 |
| Green Line | \$0 | \$1,008 | \$0 | \$0 | \$0 | \$0 | \$0 | \$0 | \$0 | \$0 | \$0 | \$267 | \$0 | \$1,275 |
| Gold Line | \$0 | \$0 | \$0 | \$0 | \$714 | \$0 | \$0 | \$5,860 | \$50,059 | \$1,669 | \$0 | \$0 | \$0 | \$58,302 |
| Totals | \$13,838 | \$1,008 | \$8,370 | \$15,618 | \$14,760 | \$72,961 | \$9,463 | \$15,824 | \$51,587 | \$1,876 | \$42,690 | \$17,406 | \$5,762 | \$271,163 |

| Rail Vehicle Accident Costs - November 2014 | | | | |
|---|------------|-------------------|--|-------------|
| Date | Incident # | Problem Code | Incident Description | Repair Cost |
| Metro Blue/Expo Line | | | | |
| 11/12/14 | 2529878 | Train vs. Vehicle | A 10-73 was reported at Track #2, Long Beach Blvd. and 19th Street. | \$ 4,357 |
| 11/29/14 | 2535644 | Train vs. Vehicle | A 10-73 was reported at Track #4, Southbound, Raymond Ave. | \$ 1,405 |
| | | | Total | \$ 5,762 |
| Metro Green Line | | | | |
| 11/7/14 | 2517854 | Train vs. Object | A 10-71 was reported that Car 216A made contact with the motor man's platform. | \$ - |
| | | | Total | \$ - |
| | | | | |
| Grand Total | | | | \$ 5,762 |
| (10-71) = Train vs. Object, (10-72) = Train vs. Pedestrian, (10-73) = Train vs. Vehicle (10-74) = Train vs. MTA Vehicle, (10-75) = Derailment | | | | |

Service Delivery November 2014

November 2014 - Service Delivery

Blue/Expo Line Fleet Size: 92

| <u>Pull Out</u> | <u>Vehicles Required</u> | <u>Average Available</u> | <u>% Up (Down)</u> |
|-------------------------|--------------------------|--------------------------|--------------------|
| Weekday: | 78 | 80 | 103% |
| Weekend: | 60 | 64 | 107% |
| Late Pullouts: 0* | | | |
| Monthly Mileage: | 635,504 | | |

Red/Purple Line Fleet Size: 104

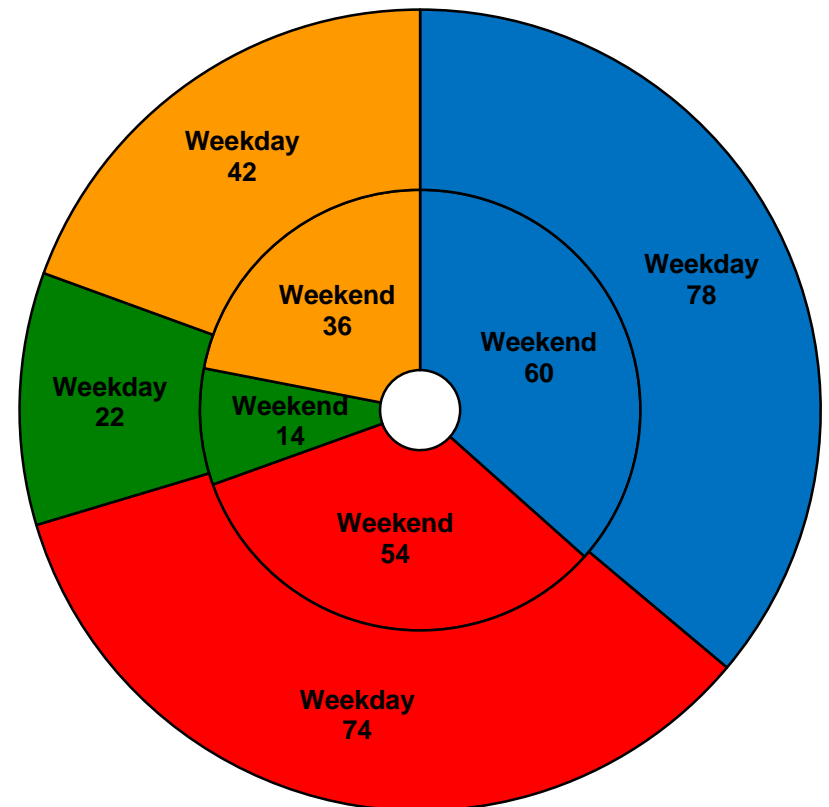
| <u>Pull Out</u> | <u>Vehicles Required</u> | <u>Average Available</u> | <u>% Up (Down)</u> |
|-------------------------|--------------------------|--------------------------|--------------------|
| Weekday: | 74 | 80 | 108% |
| Weekend: | 54 | 70 | 130% |
| Late Pullouts: 0* | | | |
| Monthly Mileage: | 610,918 | | |

Green Line Fleet Size: 29

| <u>Pull Out</u> | <u>Vehicles Required</u> | <u>Average Available</u> | <u>% Up (Down)</u> |
|-------------------------|--------------------------|--------------------------|--------------------|
| Weekday: | 22 | 22 | 100% |
| Weekend: | 14 | 16 | 114% |
| Late Pullouts: 0* | | | |
| Monthly Mileage: | 223,005 | | |

Gold Line Fleet Size: 50

| <u>Pull Out</u> | <u>Vehicles Required</u> | <u>Average Available</u> | <u>% Up (Down)</u> |
|-------------------------|--------------------------|--------------------------|--------------------|
| Weekday: | 42 | 42 | 100% |
| Weekend: | 36 | 40 | 111% |
| Late Pullouts: 0* | | | |
| Monthly Mileage: | 316,541 | | |



■ Blue/Expo Line ■ Red/Purple Line ■ Green Line ■ Gold Line

Vehicle Utilization November 2014

Metro Red/Purple Line

Red/Purple Line:

The following cars were out of service due to:

Car # 501-502 Motor Coupling Failure

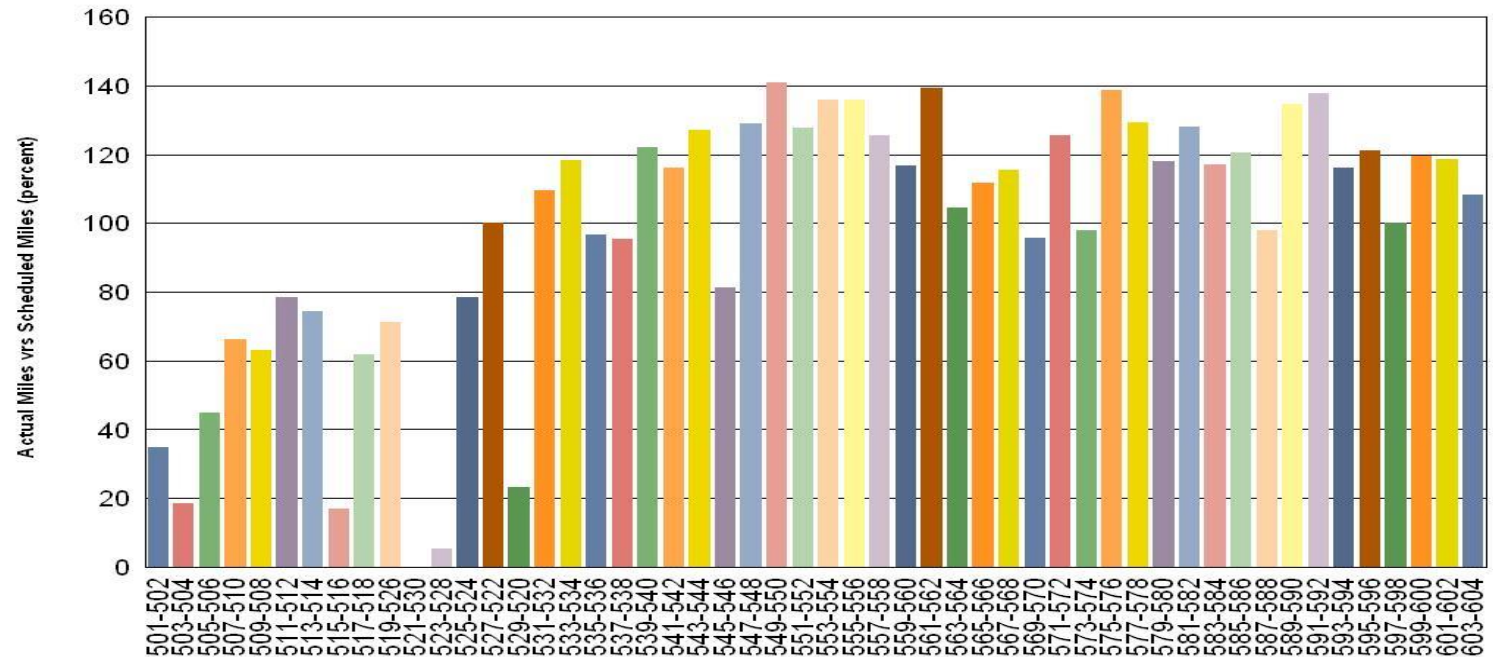
Car # 503-504 Door Overhaul

Car # 515-516 Propulsion Fault

Car # 521-530 Propulsion Fault and Truck Replacement

Car # 523-528 Propulsion Fault and Emergency Brake Application

Car # 529-520 Motor Coupling Failure

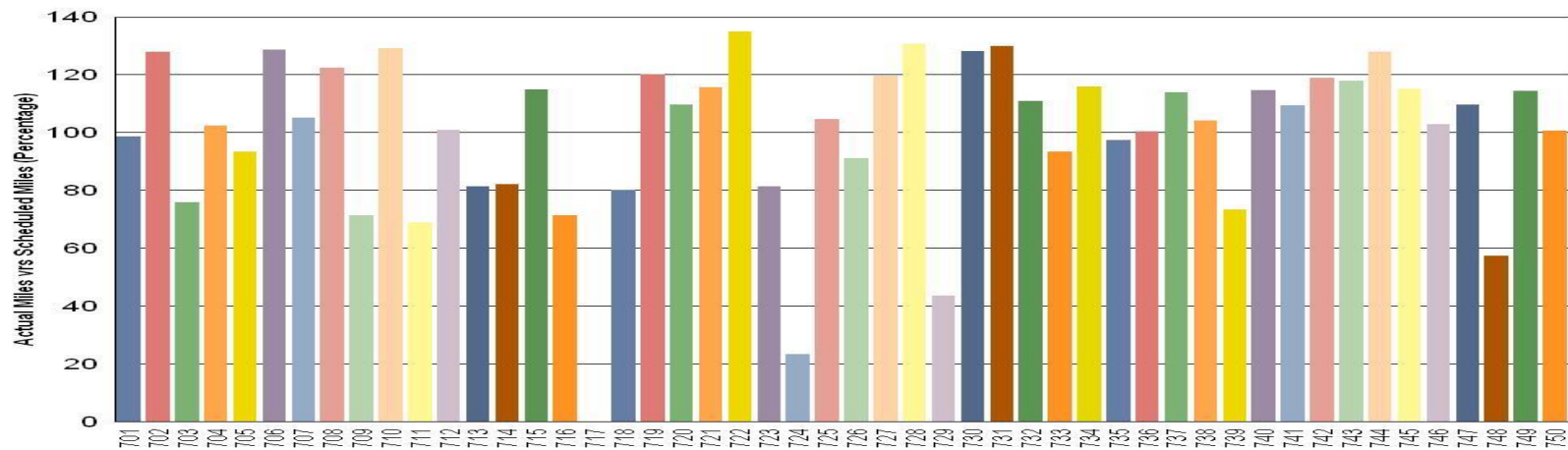


Metro Gold Line

Gold Line:

Car # 717 Out of service for replacement of burnt wiring

Car # 724 On hold for an upcoming 120K inspection



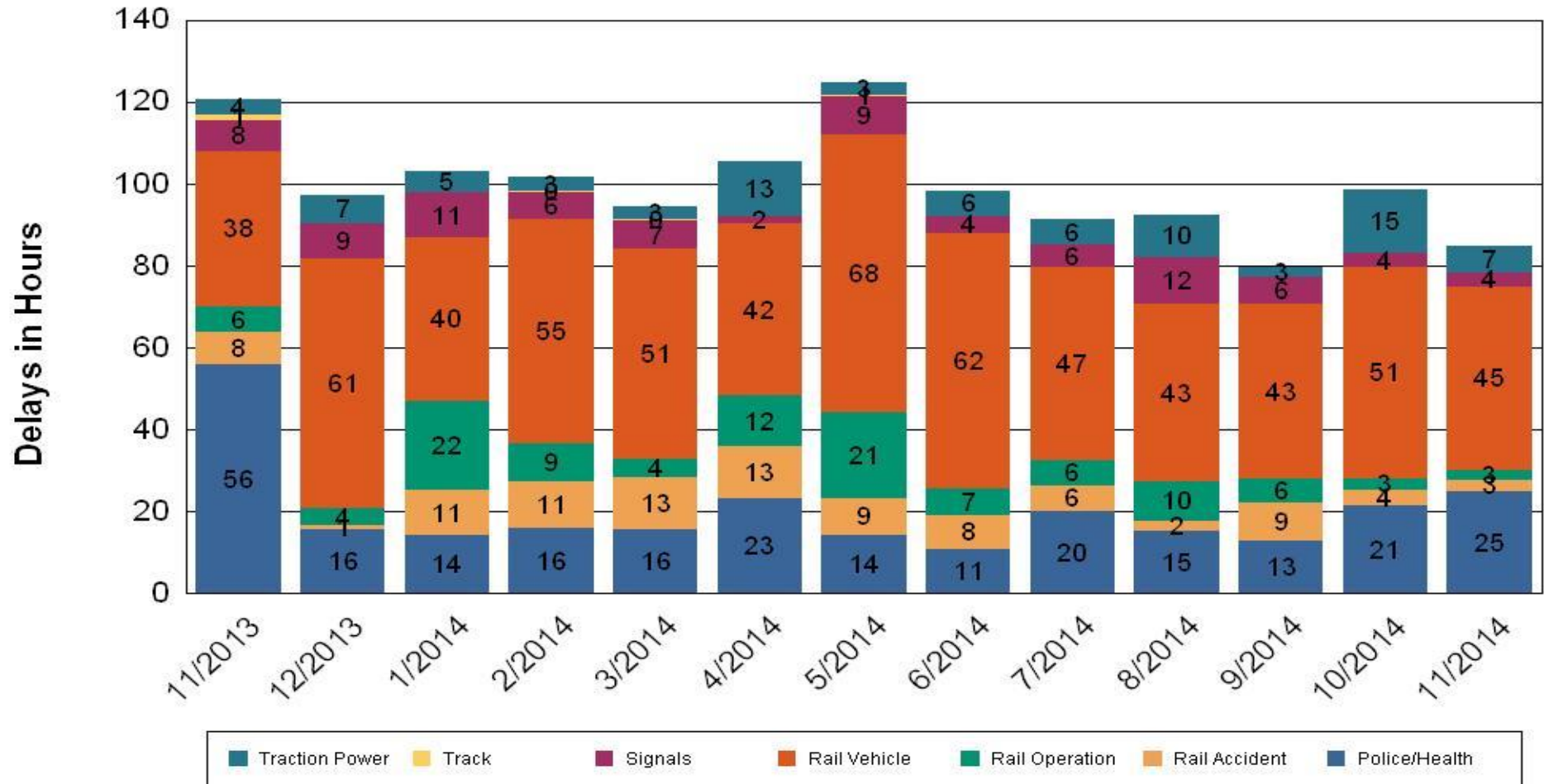
•Percentage includes an average 4% mileage deduction for yard mileage and vehicle testing.



All Train Delays (Hours) November 2013-2014

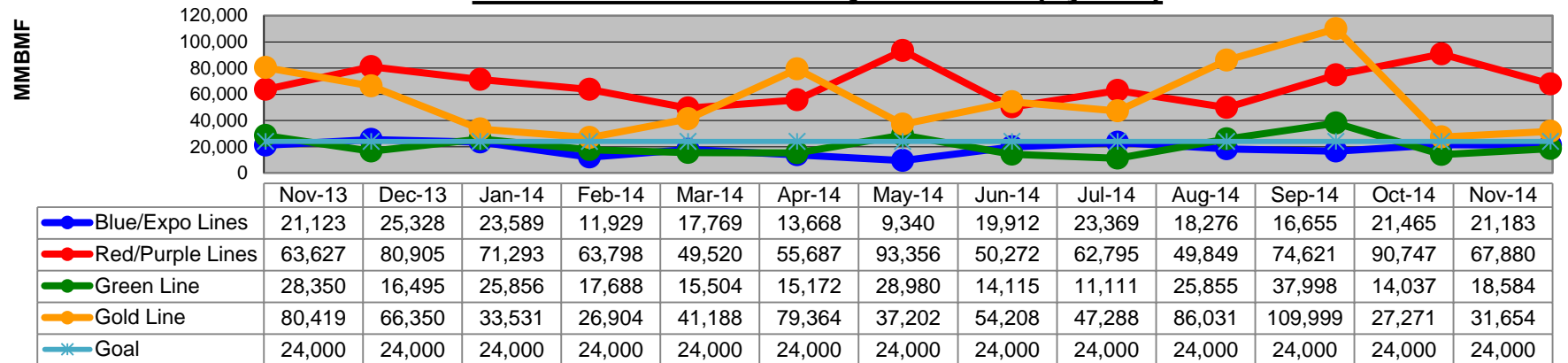
All Train Delays

Totals Include the delay to all trains involved (not just the primary incident)

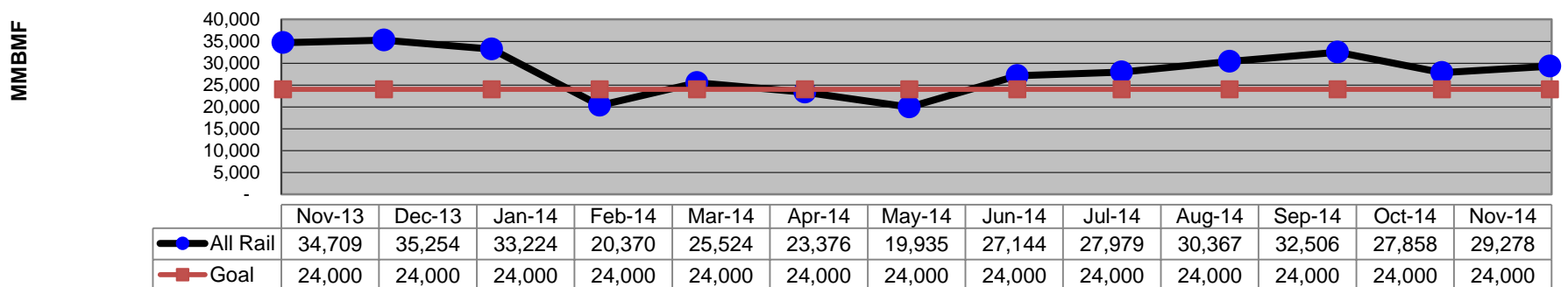


Mean Miles Between Failures (Major) November 2013-2014

Mean Miles Between Major Failures (by line)

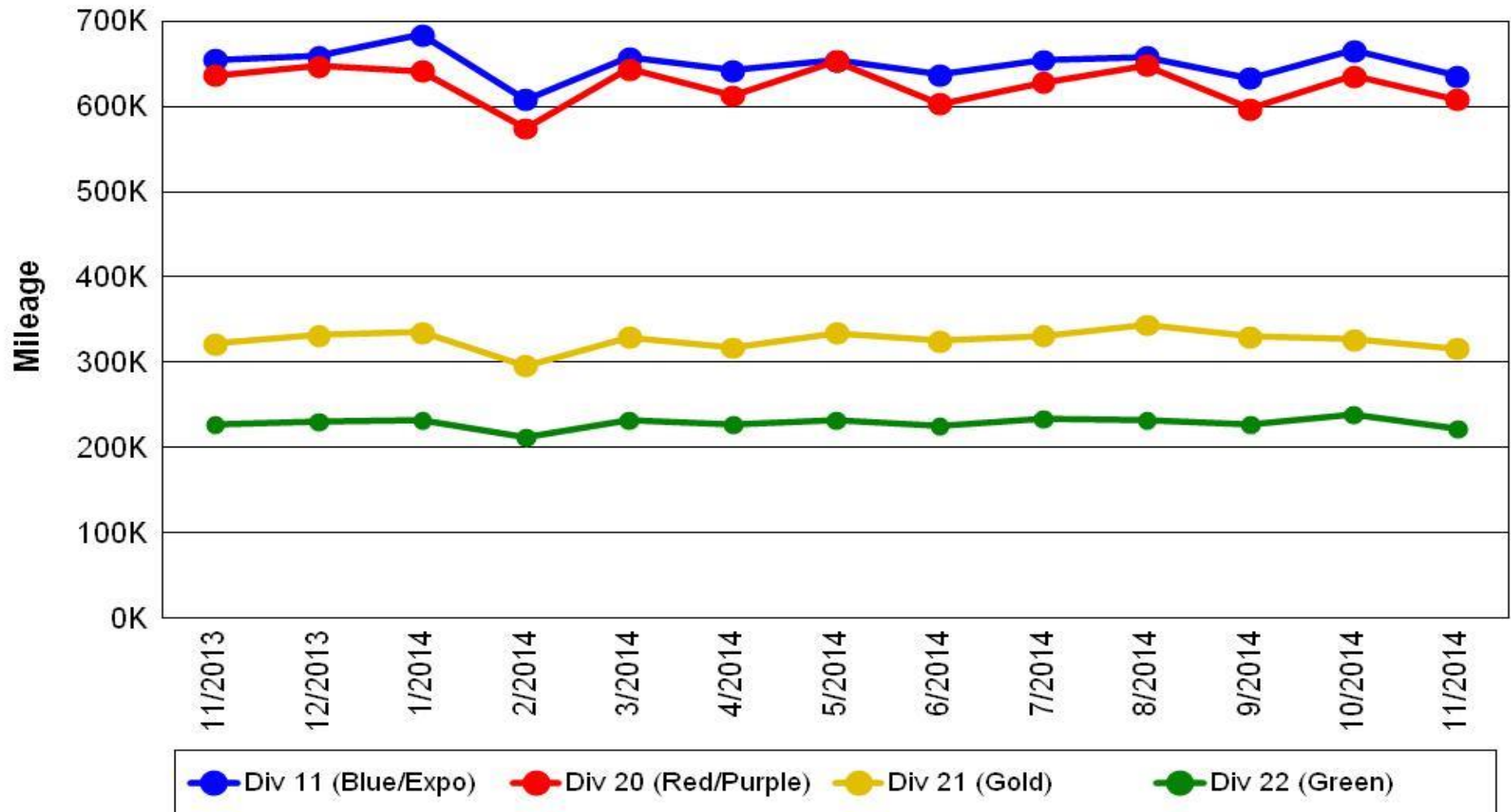


Mean Miles Between Major Failures (all)



Mileage Between Data Range (by month) November 2013-2014

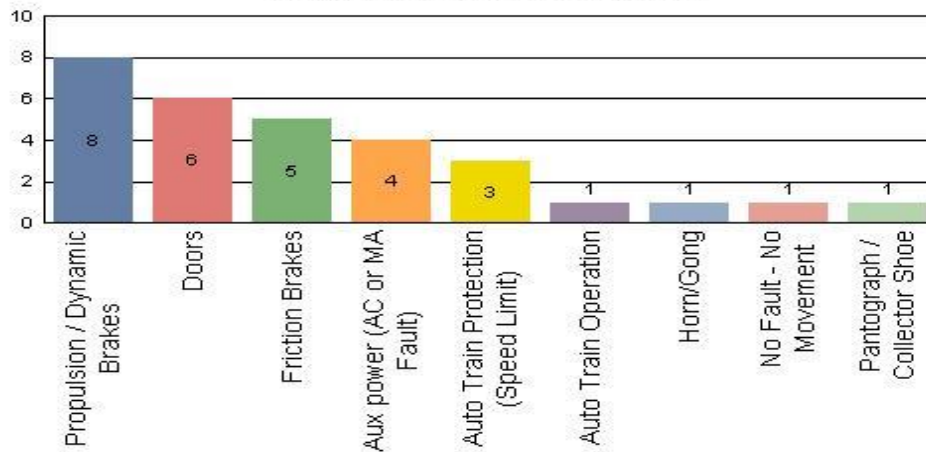
Rail Division Monthly Mileage



Top Incident Categories November 2014

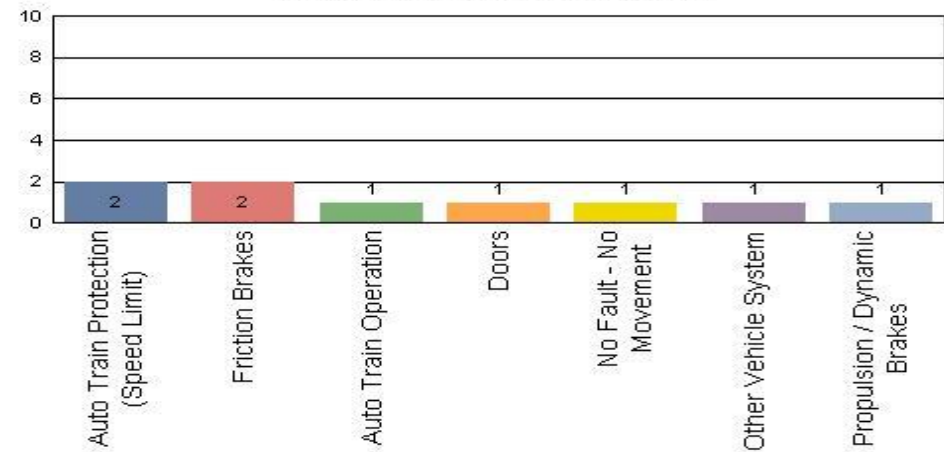
Metro Blue/Expo Line

Top Incident Categories



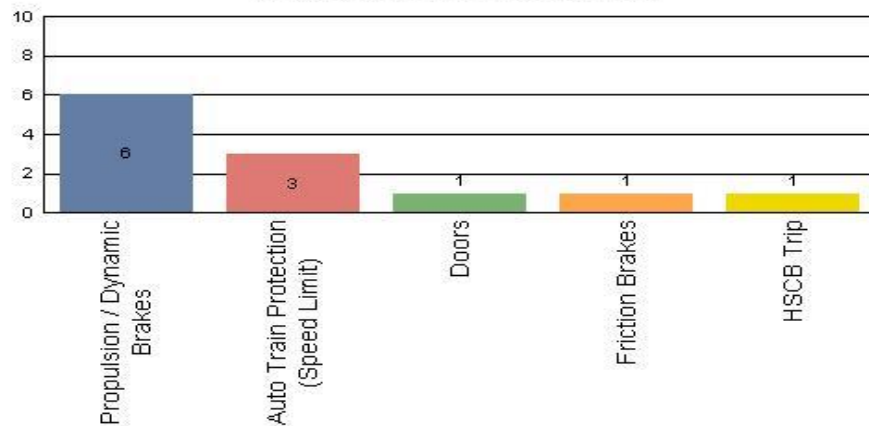
Metro Red/Purple Line

Top Incident Categories



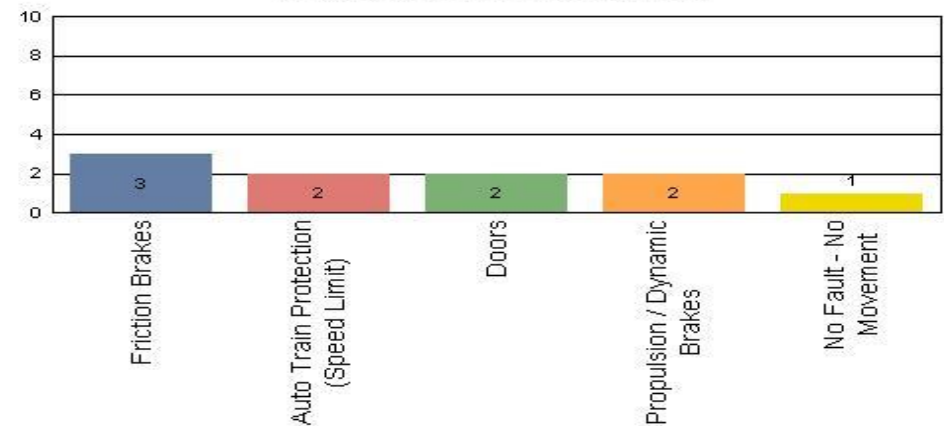
Metro Green Line

Top Incident Categories



Metro Gold Line

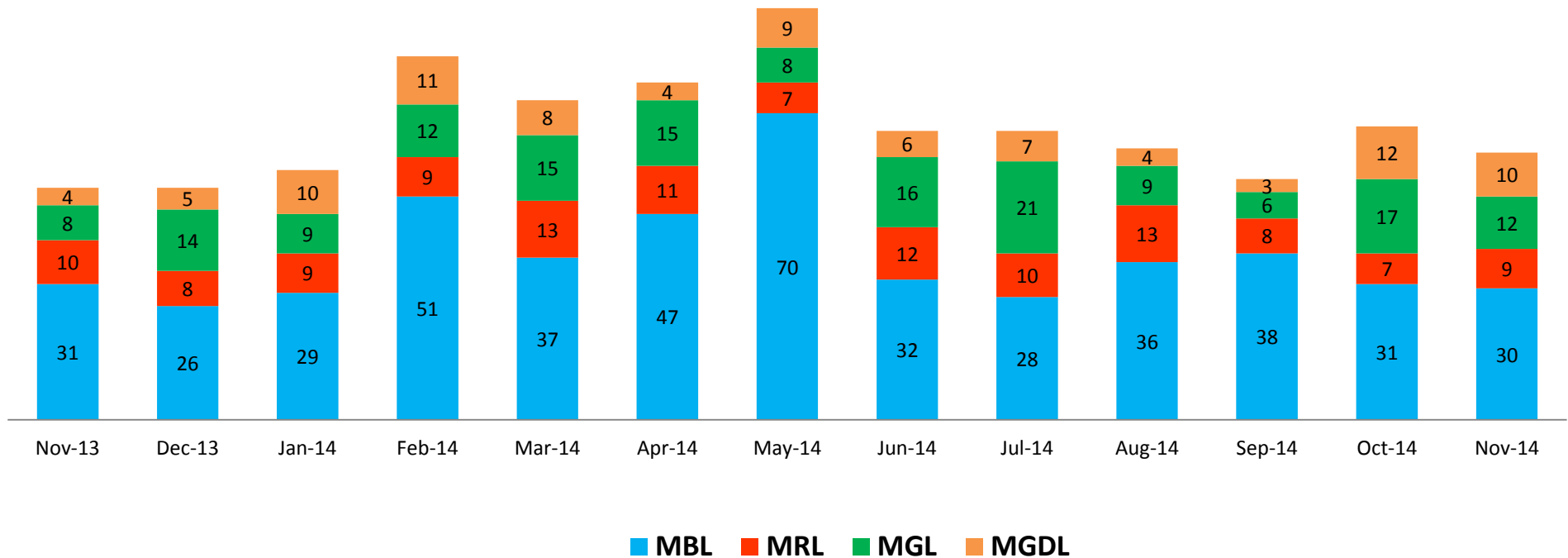
Top Incident Categories



Major Incidents

November 2013-2014

Numbers of Major System Failures (by Line)



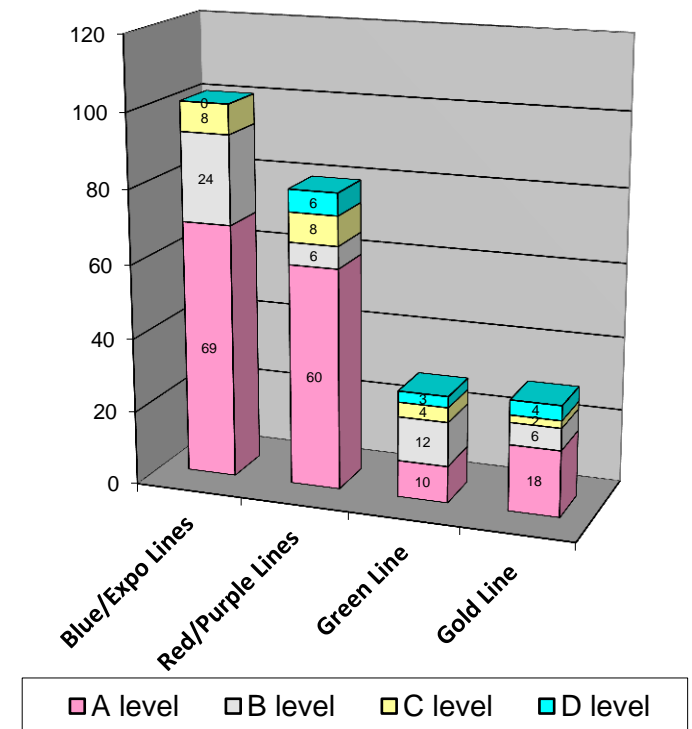
Preventive Maintenance Compliance

November 2013-2014

| PM Compliance | Nov-13 | Dec-13 | Jan-14 | Feb-14 | Mar-14 | Apr-14 | May-14 | Jun-14 | Jul-14 | Aug-14 | Sep-14 | Oct-14 | Nov-14 |
|------------------|--------|--------|--------|--------|--------|--------|--------|--------|--------|--------|--------|--------|--------|
| Blue/Expo Lines | 100% | 100% | 100% | 100% | 100% | 100% | 100% | 100% | 100% | 100% | 100% | 100% | 100% |
| Red/Purple Lines | 100% | 100% | 100% | 100% | 100% | 100% | 100% | 100% | 100% | 100% | 100% | 100% | 100% |
| Green Line | 92% | 100% | 100% | 100% | 100% | 100% | 100% | 97%* | 100% | 100% | 100% | 100% | 97% |
| Gold Line | 100% | 100% | 100% | 100% | 100% | 100% | 100% | 100% | 100% | 100% | 100% | 100% | 100% |

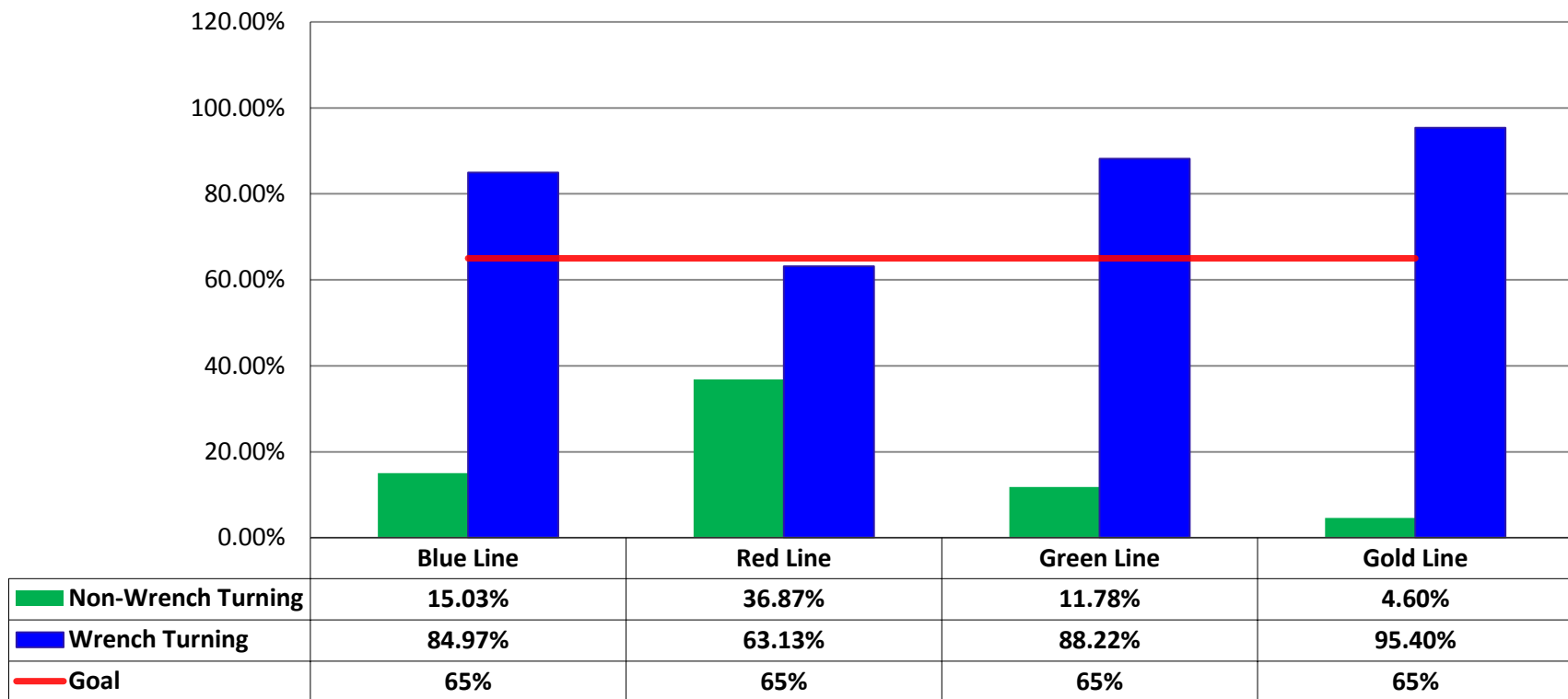
| Number of Preventive Maintenance Inspections - November 2014 | | | | | |
|--|---------|---------|---------|---------|--------|
| Line | A level | B level | C level | D level | Totals |
| Blue/Expo Lines | 69 | 24 | 8 | 0 | 101 |
| Red/Purple Lines | 60 | 6 | 8 | 6 | 80 |
| Green Line | 10 | 12 | 4 | 3 | 29 |
| Gold Line | 18 | 6 | 2 | 4 | 30 |
| Totals: | 157 | 48 | 22 | 13 | 240 |

| Explanation of PM Inspection levels | | Miles | | | |
|-------------------------------------|------------|---------|---------|---------|---------|
| Line | Type | A level | B level | C level | D level |
| Blue/Expo Lines | P865/P2020 | 5,000 | 15,000 | 30,000 | 60,000 |
| Blue/Expo Lines | P2000 | 7,500 | 22,500 | 45,000 | 90,000 |
| Red/Purple Lines | A650 | 7,500 | 22,500 | 45,000 | 90,000 |
| Green Line | P2000 | 7,500 | 22,500 | 45,000 | 90,000 |
| Gold Line | P2550 | 10,000 | 30,000 | 60,000 | 120,000 |



RFS Wrench Turning November 2014

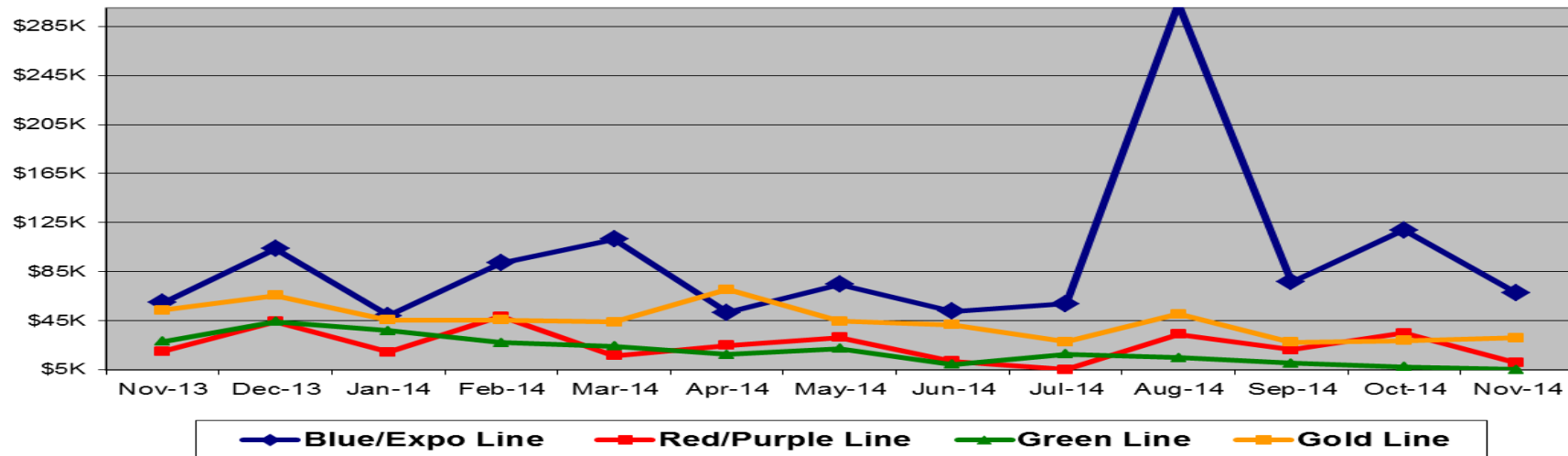
RFS - Wrench Turning November 2014



Vandalism & Graffiti Report

November 2013-2014

| Graffiti Costs | | | | | | | | | | | | | | |
|-----------------|--------|--------|--------|--------|--------|--------|--------|--------|--------|--------|--------|--------|--------|-----------------|
| | Nov-13 | Dec-13 | Jan-14 | Feb-14 | Mar-14 | Apr-14 | May-14 | Jun-14 | Jul-14 | Aug-14 | Sep-14 | Oct-14 | Nov-14 | 13-Month Period |
| Blue/Expo Line | \$60K | \$104K | \$49K | \$92K | \$112K | \$52K | \$75K | \$53K | \$59K | \$303K | \$77K | \$119K | \$68K | \$1221K |
| Red/Purple Line | \$20K | \$44K | \$19K | \$49K | \$17K | \$25K | \$32K | \$12K | \$5K | \$34K | \$22K | \$35K | \$11K | \$324K |
| Green Line | \$28K | \$44K | \$37K | \$27K | \$24K | \$17K | \$22K | \$9K | \$18K | \$15K | \$10K | \$8K | \$5K | \$266K |
| Gold Line | \$54K | \$66K | \$46K | \$46K | \$44K | \$71K | \$45K | \$42K | \$28K | \$51K | \$28K | \$29K | \$31K | \$578K |
| Totals: | \$162K | \$258K | \$151K | \$214K | \$197K | \$165K | \$173K | \$116K | \$110K | \$402K | \$136K | \$190K | \$115K | \$2,389K |



| November 2014 Vandalism & Graffiti - All Rail | | | | |
|---|--------------|------------------|------------------|-------------------|
| | Qty | Labor | Materials | Totals |
| Windows Replaced | 137 | \$ 11,718 | \$ 18,131 | \$ 29,849 |
| Vandal Shields Replaced | 630 | \$ 15,131 | \$ 15,303 | \$ 30,434 |
| Seats Cleaned | 387 | \$ 1,553 | \$ - | \$ 1,553 |
| Seats Inserts Replaced | 145 | \$ 4,559 | \$ 5,730 | \$ 10,289 |
| Graffiti Removal - Other | 847 | \$ 19,868 | \$ 1,295 | \$ 21,163 |
| Repainting Panels | 170 | \$ 9,495 | \$ 12,197 | \$ 21,692 |
| Totals | 2,316 | \$ 62,324 | \$ 52,656 | \$ 114,980 |

Graffiti Pictures November 2014

Blue Line

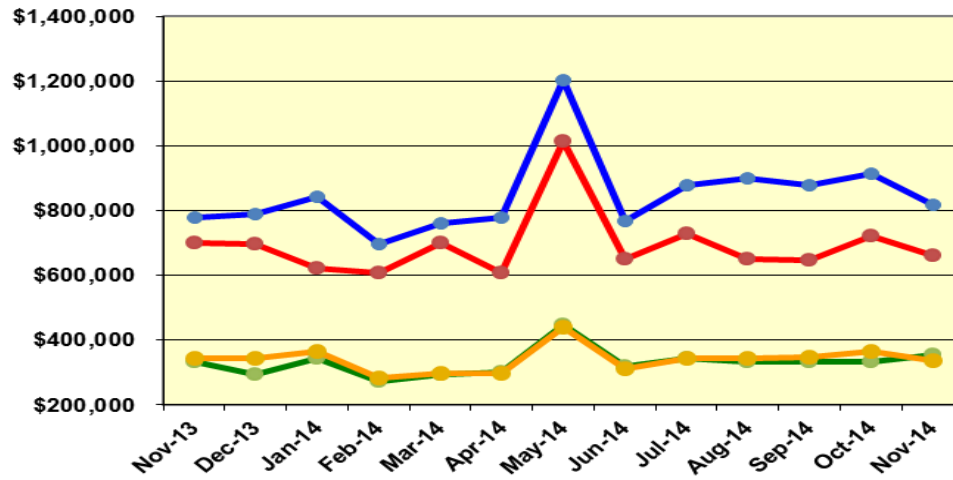


Green Line

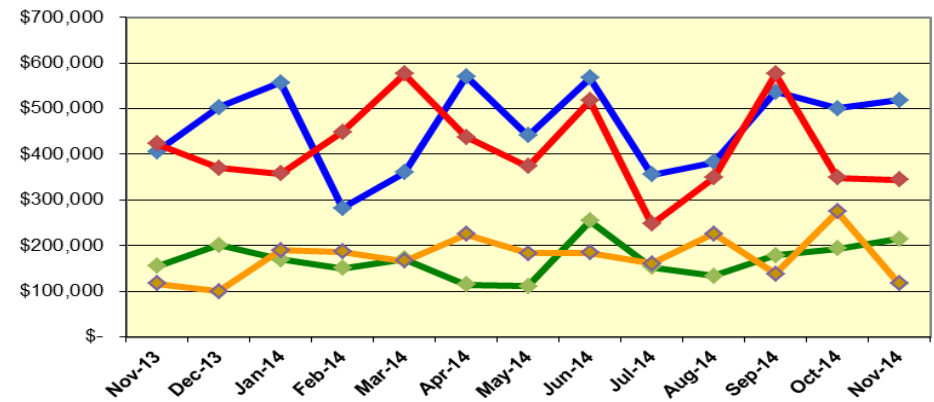


Labor and Material Costs November 2013-2014

Labor Costs



Material Costs



| Nov-13 | Dec-13 | Jan-14 | Feb-14 | Mar-14 | Apr-14 | May-14* | Jun-14 | Jul-14 | Aug-14 | Sep-14 | Oct-14 | Nov-14 |
|--------|--------|--------|--------|--------|--------|---------|--------|--------|--------|--------|--------|--------|
|--------|--------|--------|--------|--------|--------|---------|--------|--------|--------|--------|--------|--------|

LABOR COSTS

| Blue/Expo Lines | \$ 780,678 | \$ 788,589 | \$ 842,979 | \$ 695,394 | \$ 760,511 | \$ 778,469 | \$ 1,204,234 | \$ 767,717 | \$ 879,339 | \$ 900,043 | \$ 878,598 | \$ 915,432 | \$ 819,497 |
|------------------|--------------|--------------|--------------|--------------|--------------|--------------|--------------|--------------|--------------|--------------|--------------|--------------|--------------|
| Red/Purple Lines | \$ 700,975 | \$ 697,759 | \$ 620,440 | \$ 608,097 | \$ 701,156 | \$ 608,816 | \$ 1,015,092 | \$ 650,226 | \$ 728,383 | \$ 652,202 | \$ 645,981 | \$ 721,060 | \$ 660,321 |
| Green Line | \$ 332,737 | \$ 292,482 | \$ 345,262 | \$ 271,877 | \$ 294,381 | \$ 302,213 | \$ 449,117 | \$ 318,516 | \$ 345,270 | \$ 334,772 | \$ 331,870 | \$ 331,661 | \$ 354,058 |
| Gold Line | \$ 343,700 | \$ 345,170 | \$ 363,886 | \$ 283,563 | \$ 298,069 | \$ 297,634 | \$ 438,759 | \$ 313,589 | \$ 344,331 | \$ 343,246 | \$ 348,288 | \$ 366,248 | \$ 338,610 |
| Totals | \$ 2,158,090 | \$ 2,123,999 | \$ 2,172,567 | \$ 1,858,931 | \$ 2,054,117 | \$ 1,987,132 | \$ 3,107,202 | \$ 2,050,048 | \$ 2,297,323 | \$ 2,230,262 | \$ 2,204,736 | \$ 2,334,400 | \$ 2,172,486 |

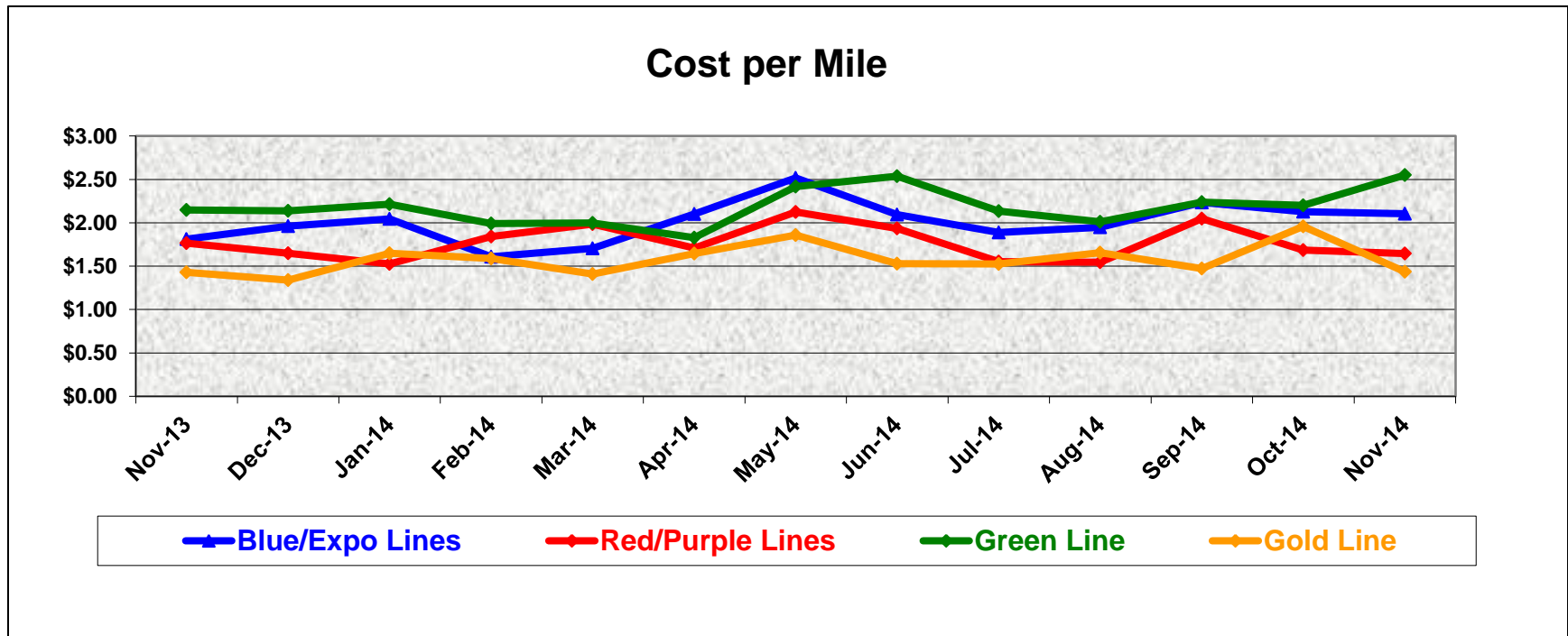
MATERIAL COSTS

| Blue/Expo Lines | \$ 406,032 | \$ 502,761 | \$ 556,457 | \$ 282,466 | \$ 359,845 | \$ 570,775 | \$ 440,576 | \$ 567,257 | \$ 355,405 | \$ 382,184 | \$ 536,100 | \$ 500,390 | \$ 518,334 |
|------------------|--------------|--------------|--------------|--------------|--------------|--------------|--------------|--------------|------------|--------------|--------------|--------------|--------------|
| Red/Purple Lines | \$ 422,849 | \$ 369,819 | \$ 357,244 | \$ 448,225 | \$ 575,495 | \$ 437,612 | \$ 373,815 | \$ 516,934 | \$ 247,048 | \$ 348,370 | \$ 576,230 | \$ 349,031 | \$ 343,936 |
| Green Line | \$ 154,582 | \$ 201,035 | \$ 169,759 | \$ 150,881 | \$ 170,250 | \$ 113,979 | \$ 111,344 | \$ 254,264 | \$ 153,001 | \$ 133,386 | \$ 178,206 | \$ 193,176 | \$ 214,902 |
| Gold Line | \$ 116,167 | \$ 99,267 | \$ 189,310 | \$ 186,640 | \$ 166,216 | \$ 224,430 | \$ 183,115 | \$ 183,869 | \$ 160,751 | \$ 225,818 | \$ 137,883 | \$ 274,059 | \$ 116,179 |
| Totals | \$ 1,099,631 | \$ 1,172,883 | \$ 1,272,769 | \$ 1,068,212 | \$ 1,271,807 | \$ 1,346,796 | \$ 1,108,849 | \$ 1,522,323 | \$ 916,204 | \$ 1,089,759 | \$ 1,428,418 | \$ 1,316,657 | \$ 1,193,351 |

Cost Per Mile

November 2013-2014

| Cost per mile: | Nov-13 | Dec-13 | Jan-14 | Feb-14 | Mar-14 | Apr-14 | May-14 | Jun-14 | Jul-14 | Aug-14 | Sep-14 | Oct-14 | Nov-14 |
|------------------|--------|--------|--------|--------|--------|--------|--------|--------|--------|--------|--------|--------|--------|
| Blue/Expo Lines | \$1.81 | \$1.96 | \$2.05 | \$1.61 | \$1.70 | \$2.10 | \$2.52 | \$2.10 | \$1.89 | \$1.95 | \$2.24 | \$2.13 | \$2.11 |
| Red/Purple Lines | \$1.77 | \$1.65 | \$1.52 | \$1.84 | \$1.98 | \$1.71 | \$2.13 | \$1.93 | \$1.55 | \$1.54 | \$2.05 | \$1.68 | \$1.64 |
| Green Line | \$2.15 | \$2.14 | \$2.21 | \$1.99 | \$2.00 | \$1.83 | \$2.42 | \$2.54 | \$2.14 | \$2.01 | \$2.24 | \$2.20 | \$2.55 |
| Gold Line | \$1.43 | \$1.34 | \$1.65 | \$1.59 | \$1.41 | \$1.64 | \$1.86 | \$1.53 | \$1.53 | \$1.65 | \$1.47 | \$1.96 | \$1.44 |



ATU Absences vs. Overtime

November 2014

| ABSENCE TYPE and HOURS | 3941 & 3947 Blue & Expo | 3942 Red | 3943 Green | 3944 Gold | Total |
|-------------------------------------|----------------------------|--------------|---------------|--------------|---------------|
| AWP-ABSENT W/O PERMISSION | - | - | 12 | - | 12 |
| BER-BEREAVEMENT | 24 | - | 24 | 24 | 72 |
| CTO-COMPENSATORY TIME OFF | 283 | 307 | 66 | 56 | 712 |
| CUT-EMPLOYEE LEAVES EARLY | 3 | 3 | - | 0 | 7 |
| DSL-DISABILITY LEAVE/LONG | 722 | - | 336 | 112 | 1,170 |
| EFH-EMG. FLOAT HOL. | 8 | 176 | 48 | 32 | 264 |
| ETO-EXCUSED TIME OFF | 71 | 43 | 9 | 51 | 174 |
| FMI-FAM IND INJURY | - | - | - | - | - |
| FML-FAMILY CARE LEAVE | 406 | 634 | 330 | 24 | 1,393 |
| FMS-FAMILY LEAVE SICK | 31 | 165 | 185 | 8 | 389 |
| HLF-HOLIDAY FLOATING | 288 | 416 | 104 | 80 | 888 |
| HNP-HOLIDAY NOT PAID | - | - | 40 | 8 | 48 |
| HOL-HOLIDAY LEGAL | 696 | 544 | 144 | 168 | 1,552 |
| IIR-INDUS INJURY -REOCCUR. | - | 80 | - | - | 80 |
| JUR-JURY DUTY | 24 | 8 | - | - | 32 |
| LC1-LABOR CODE 233 | 72 | 132 | 48 | 40 | 293 |
| LTI-OCCPIL/LONGTRM INJ LEAVE | 232 | 32 | - | - | 264 |
| MLN-MILITARY ABSENCE-UNPAID | 16 | - | - | - | 16 |
| OWP-OFF WITH PERMISSION | - | 53 | - | 16 | 69 |
| RTO-REQUESTED TIME OFF-NO PAY | 32 | - | 8 | 4 | 44 |
| SCK-SICK PAY | 352 | 215 | 152 | 171 | 889 |
| SCW-SICK WITHOUT PAY | 288 | 32 | 192 | 160 | 672 |
| SPN-SCHOOL PARTNER NOT PAID | - | - | - | 8 | 8 |
| SUS-DISCIPLINARY SUSPENSION | 16 | - | - | - | 16 |
| TAR-TARDY | 6 | 2 | 1 | 1 | 10 |
| UNP-UNION BUS PAID | - | - | 13 | - | 13 |
| VAC-VACATION | 1,053 | 1,003 | 340 | 596 | 2,992 |
| Total Absence Hours | 4,623 | 3,845 | 2,051 | 1,559 | 12,078 |
| ATU Number of Work Force (assigned) | 134 | 107 | 49 | 49 | 339 |
| Full Work Force hours/month | 23,222 | 18,543 | 8,492 | 8,492 | 58,749 |
| Absence as a % of Work Force | 20% | 21% | 24% | 18% | 21% |

| OVERTIME TYPE and HOURS | 3941 & 3947 Blue & Expo | 3942 Red | 3943 Green | 3944 Gold | Total |
|--------------------------------------|----------------------------|--------------|---------------|--------------|---------------|
| CTB-COMPENSATORY TIME TO BANK | 170 | 186 | 66 | 24 | 447 |
| OTP-PREM OVERTIME | 4,760 | 4,191 | 1,911 | 1,475 | 12,338 |
| WLO-Worked Lunch Overtime | 181 | 207 | 91 | 38 | 516 |
| Total Overtime Hours | 5,111 | 4,584 | 2,068 | 1,537 | 13,301 |
| Overtime as a % of Work Force | 22% | 25% | 24% | 18% | 23% |



Metro

Note: Overtime also covers other required activities, including Training, Component Overhaul, and Special Events.

RFS Instruction Department Activities

November 2014

Training classes completed during the month of November 2014

| Description | Course Hours | Student Count | Training Hours |
|--|--------------|---------------|----------------|
| Blue & Expo Line Training - (P865/2020 & P2000 LRV): | | | |
| RFS 865/2020 VEHICLE SYSTEMS | 40 | 3 | 120 |
| RFS 865/2020 MAINLINE DUTY, DEAD TOW AND VEHICLE RECOVERY (HAN | 24 | 3 | 72 |
| Total Blue Line Training (Hours): | | | 192 |
| Green Line Training (P2000 LRVs): | | | |
| WAYSIDE WORKER PROTECTION | 4 | 2 | 8 |
| Total Green Line Training (Hours): | | | 8 |
| Gold Line Training (P2550 LRVs): | | | |
| HAZARD COMMUNICATION FOR EMPLOYEES | 1 | 34 | 34 |
| WAYSIDE WORKER PROTECTION | 4 | 4 | 16 |
| Total Gold Line Training (Hours): | | | 50 |
| Total RFS Instruction for the month of November 2014 (Hours): | | | 250 |

Other Instruction Activities

| | |
|--|-----|
| Instructor Vacation and Holiday | 144 |
| A650 Curriculum, Administrative, and Technical Support | 120 |
| P865/P2020 Curriculum, Administrative, and Technical Support | 100 |
| P2000 Curriculum, Administrative, and Technical Support | 100 |
| P2550 Curriculum, Administrative, and Technical Support | 100 |
| LATTC Curriculum Development (KSME) | 160 |

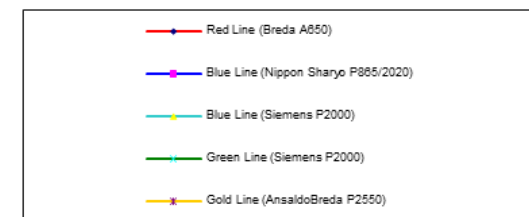
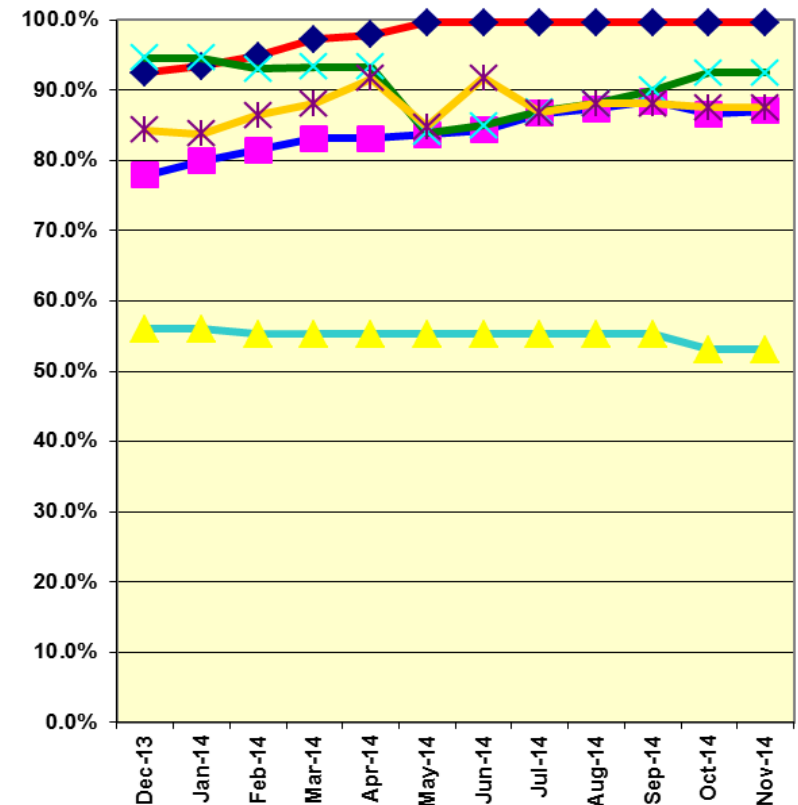
Total Other Instruction Activities 724

Core Vehicle Training Completed: BLUE RED GREEN GOLD

Percentage of core vehicle training complete: 87.1% 99.6% 92.5% 87.5%
Siemens P2000 training complete: 53.1% N/A N/A N/A

Average Specialist Rail Experience Level in Years: 12.1 11.1 10.1 9.1

Core Training Completed



Variations caused by new hires, employee transfers, & training completed