



Rail Fleet Services Monthly Report September 2014



Metro

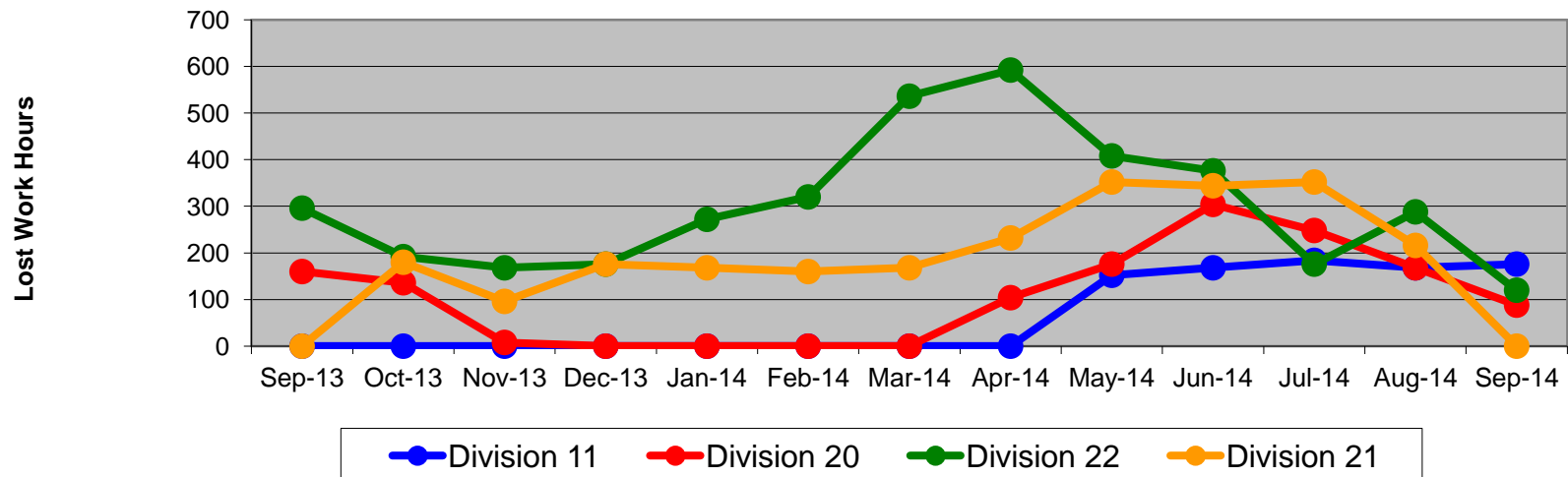
Table of Contents

| | | | |
|---|--|------|----|
| • | Safety | | |
| | - Industrial Injuries | Page | 3 |
| | - Rail Vehicle Accidents & Major Incidents | Page | 4 |
| • | Customer Service | | |
| | - Service Delivery – AM/PM Pull-Outs | Page | 5 |
| | - Vehicle Utilization – Blue Line & Green Line | Page | 6 |
| | - Vehicle Utilization – Red Line & Gold Line | Page | 7 |
| | - All Train Delay Incidents | Page | 8 |
| | - Mean Miles Between Failures (Major) | Page | 9 |
| | - Mileage Between Data Range (by month) | Page | 10 |
| • | Business Processes | | |
| | - Top Incident Categories | Page | 11 |
| | - Major Incidents | Page | 12 |
| | - Preventive Maintenance Compliance | Page | 13 |
| | - RFS Wrench Turning | Page | 14 |
| • | Finance | | |
| | - Vandalism & Graffiti Costs | Page | 15 |
| | - Graffiti Pictures | Page | 16 |
| | - Labor & Material Costs | Page | 17 |
| | - Cost per mile | Page | 18 |
| | - Absence vs. Overtime | Page | 19 |
| • | Growth | | |
| | - RFS Instruction Department Activities | Page | 20 |

Industrial Injuries – Lost Work Hours September 2013-2014

| | Sep-13 | Oct-13 | Nov-13 | Dec-13 | Jan-14 | Feb-14 | Mar-14 | Apr-14 | May-14 | Jun-14 | Jul-14 | Aug-14 | Sep-14 | 13-Month Period |
|-------------|--------|--------|--------|--------|--------|--------|--------|--------|--------|--------|--------|--------|--------|--------------------|
| Division 11 | 0 | 0 | 0 | 0 | 0 | 0 | 0 | 0 | 152 | 168 | 184 | 168 | 176 | 848 |
| Division 20 | 160 | 136 | 8 | 0 | 0 | 0 | 0 | 104 | 176 | 304 | 248 | 168 | 88 | 1,392 |
| Division 22 | 296 | 192 | 168 | 176 | 272 | 320 | 536 | 592 | 408 | 376 | 176 | 288 | 120 | 3,920 |
| Division 21 | 0 | 180 | 96 | 176 | 168 | 160 | 168 | 232 | 352 | 344 | 352 | 216 | 0 | 2,444 |
| Totals | 456 | 508 | 272 | 352 | 440 | 480 | 704 | 928 | 1,088 | 1,192 | 960 | 840 | 384 | 8,604 |

Industrial Injuries (lost work hours)



Rail Vehicle Accidents & Major Incidents

September 2013-2014

| Repair Costs | Sep-13 | Oct-13 | Nov-13 | Dec-13 | Jan-14 | Feb-14 | Mar-14 | Apr-14 | May-14 | Jun-14 | Jul-14 | Aug-14 | Sep-14 | 13-Month Period |
|-----------------|----------------|-----------------|-----------------|----------------|----------------|-----------------|-----------------|-----------------|----------------|-----------------|-----------------|----------------|-----------------|------------------|
| Blue/Expo Line | \$3,700 | \$11,475 | \$13,838 | \$0 | \$8,370 | \$15,618 | \$13,690 | \$72,961 | \$9,463 | \$9,964 | \$1,528 | \$207 | \$42,690 | \$203,504 |
| Red/Purple Line | \$0 | \$0 | \$0 | \$0 | \$0 | \$0 | \$356 | \$0 | \$0 | \$0 | \$0 | \$0 | \$0 | \$356 |
| Green Line | \$0 | \$0 | \$0 | \$1,008 | \$0 | \$0 | \$0 | \$0 | \$0 | \$0 | \$0 | \$0 | \$0 | \$1,008 |
| Gold Line | \$0 | \$0 | \$0 | \$0 | \$0 | \$0 | \$714 | \$0 | \$0 | \$5,860 | \$50,059 | \$1,669 | \$0 | \$58,302 |
| Totals | \$3,700 | \$11,475 | \$13,838 | \$1,008 | \$8,370 | \$15,618 | \$14,760 | \$72,961 | \$9,463 | \$15,824 | \$51,587 | \$1,876 | \$42,690 | \$263,170 |

| Rail Vehicle Accident Costs - September 2014 | | | | |
|---|------------|----------------------|---|-------------|
| Date | Incident # | Problem Code | Incident Description | Repair Cost |
| Metro Blue/Expo Line | | | | |
| 9/5/14 | 2503152 | Train vs. Vehicle | A 10-73 was reported at Raymond Avenue Grade Crossing. | \$ 8,820 |
| 9/7/14 | 2503501 | Train vs. Vehicle | A 10-73 was reported at Track #2, Southbound, 41st Street Grade Crossing. | \$ 15,230 |
| 9/8/14 | 2503932 | Train vs. Vehicle | A 10-73 was reported at Track #2, Southbound, Intersection of Flower and 18th Street. | \$ 9,563 |
| 9/12/14 | 2505940 | Train vs. Vehicle | A 10-73 was reported at Burnett and Long Beach Blvd. | \$ 9,077 |
| 9/26/14 | 2511500 | Train vs. Pedestrian | A 10-72 was reported. Train mirror made contact with patron on the platform. Location-Artesia station Track #2. | \$ - |
| Total | | | | \$ 42,690 |
| Grand Total | | | | \$ 42,690 |
| (10-71) = Train vs. Object, (10-72) = Train vs. Pedestrian, (10-73) = Train vs. Vehicle (10-74) = Train vs. MTA Vehicle, (10-75) = Derailment | | | | |

Note: Repair costs are only the expenses captured during the time period of the report. Actual costs may be significantly higher, if repairs are spread out over several months.

Service Delivery September 2014

September 2014 - Service Delivery

Blue/Expo Line Fleet Size: 92

| <u>Pull Out</u> | <u>Vehicles Required</u> | <u>Average Available</u> | <u>% Up (Down)</u> |
|-------------------------|--------------------------|--------------------------|--------------------|
| Weekday: | 78 | 78 | 100% |
| Weekend: | 60 | 65 | 108% |
| Late Pullouts: 0* | | | |
| Monthly Mileage: | 632,898 | | |

Red/Purple Line Fleet Size: 104

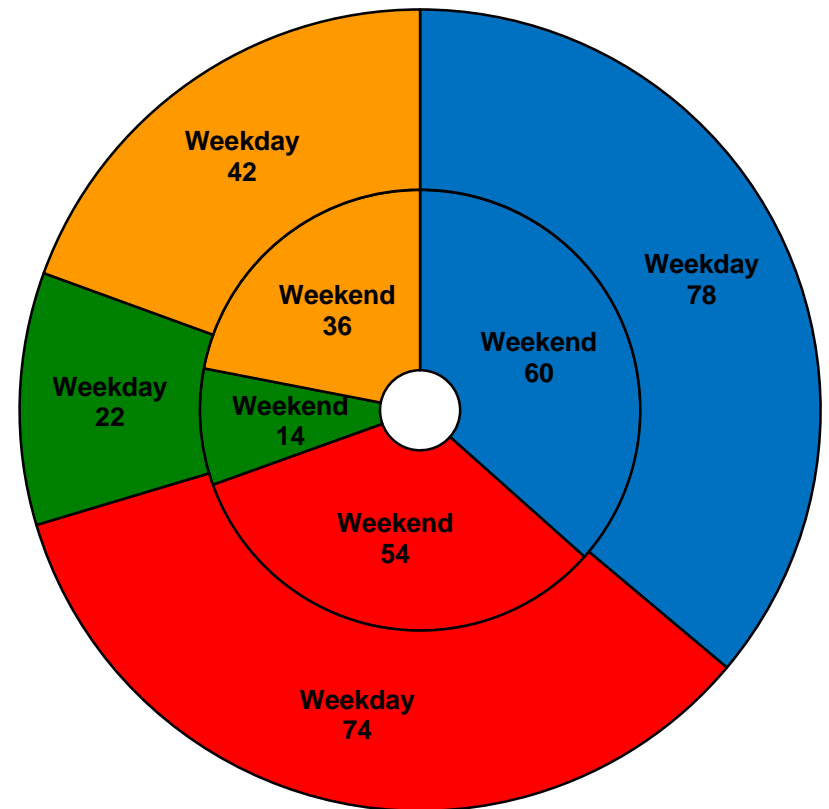
| <u>Pull Out</u> | <u>Vehicles Required</u> | <u>Average Available</u> | <u>% Up (Down)</u> |
|-------------------------|--------------------------|--------------------------|--------------------|
| Weekday: | 74 | 78 | 105% |
| Weekend: | 54 | 66 | 122% |
| Late Pullouts: 0* | | | |
| Monthly Mileage: | 596,970 | | |

Green Line Fleet Size: 29

| <u>Pull Out</u> | <u>Vehicles Required</u> | <u>Average Available</u> | <u>% Up (Down)</u> |
|-------------------------|--------------------------|--------------------------|--------------------|
| Weekday: | 22 | 22 | 100% |
| Weekend: | 14 | 17 | 121% |
| Late Pullouts: 0* | | | |
| Monthly Mileage: | 227,990 | | |

Gold Line Fleet Size: 50

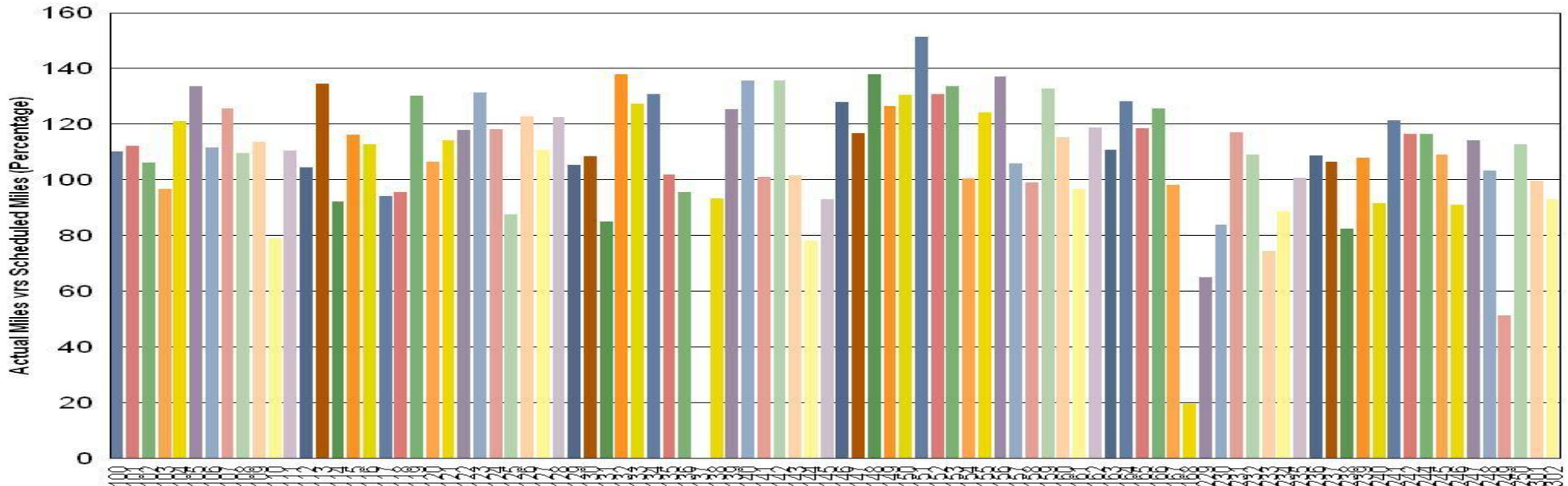
| <u>Pull Out</u> | <u>Vehicles Required</u> | <u>Average Available</u> | <u>% Up (Down)</u> |
|-------------------------|--------------------------|--------------------------|--------------------|
| Weekday: | 42 | 43 | 102% |
| Weekend: | 36 | 40 | 111% |
| Late Pullouts: 0* | | | |
| Monthly Mileage: | 329,996 | | |



■ Blue/Expo Line ■ Red/Purple Line ■ Green Line ■ Gold Line

Vehicle Utilization September 2014

Metro Blue/Expo Line



Blue/Expo Line:

Car # 137 Out of service due to major accident repair

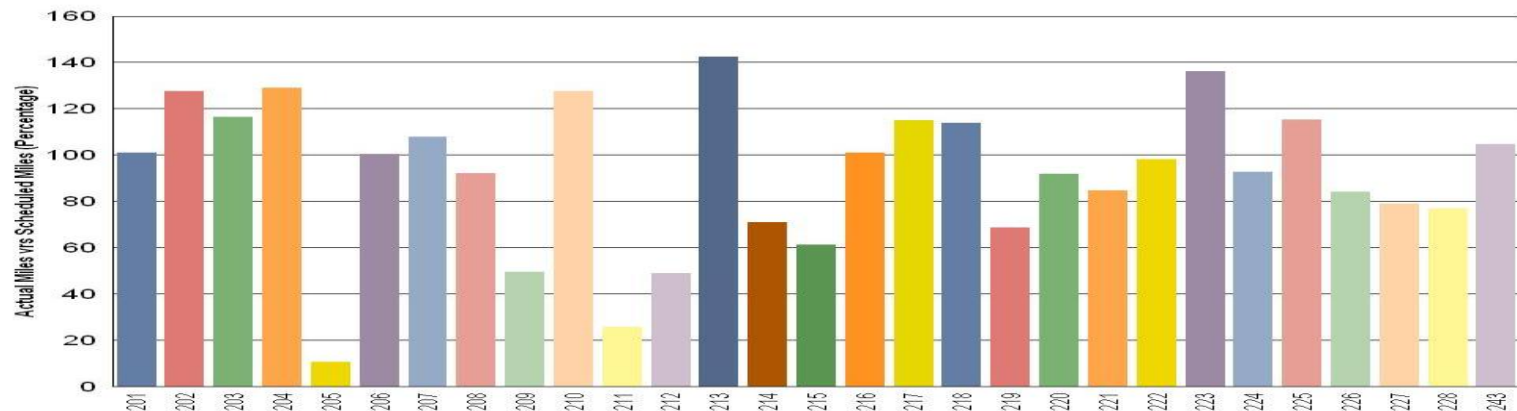
Car # 168 Out of service for engineering troubleshooting (repeat propulsion issues).

Metro Green Line

Green Line:

Car # 205 On hold for Electromagnetic Interference

Car # 211 On hold for inverter issues



Note: Percentage includes an average 4% mileage deduction for yard mileage and vehicle testing.

Vehicle Utilization September 2014

Red/Purple Line:

The following cars were out of service due to:

Car # 509-508 Door and HVAC project

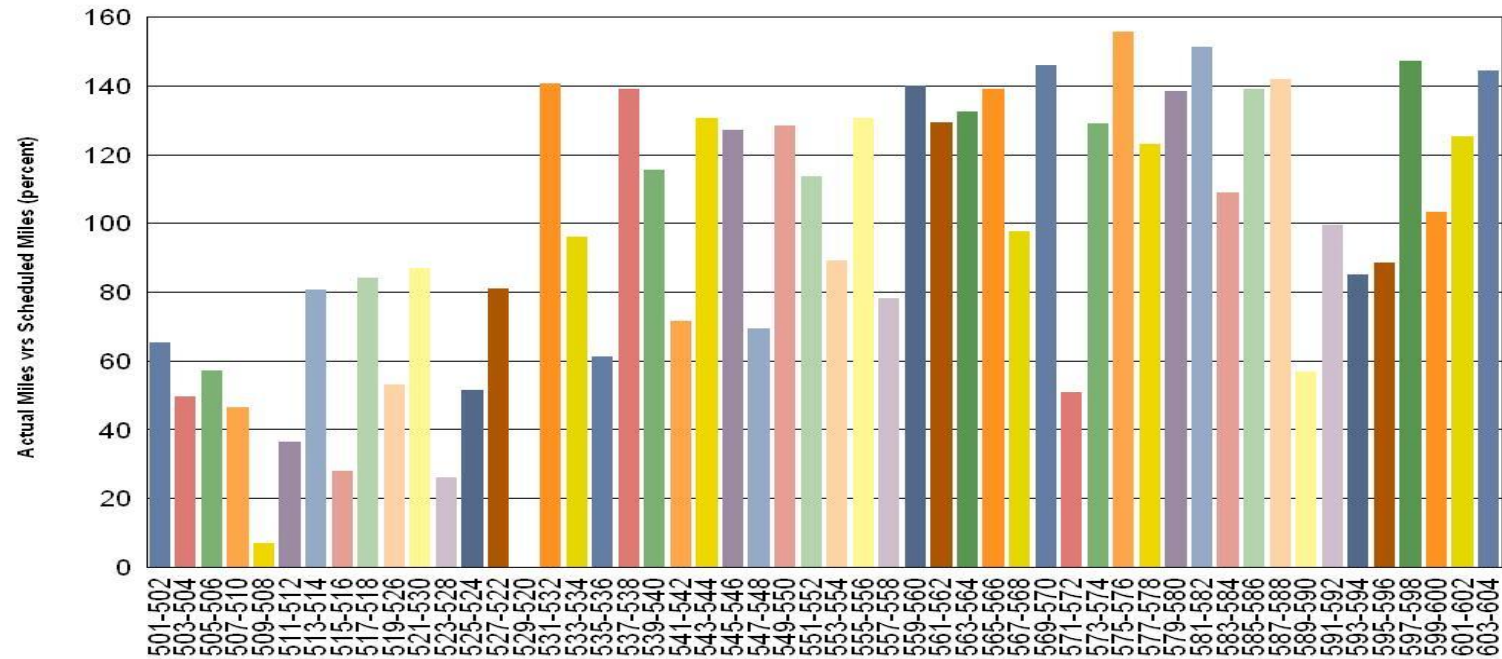
Car # 511-512 Truck Vibration

Car # 515-516 Berthing Problem

Car # 523-528 Propulsion Problem

Car # 529-520 Floor project

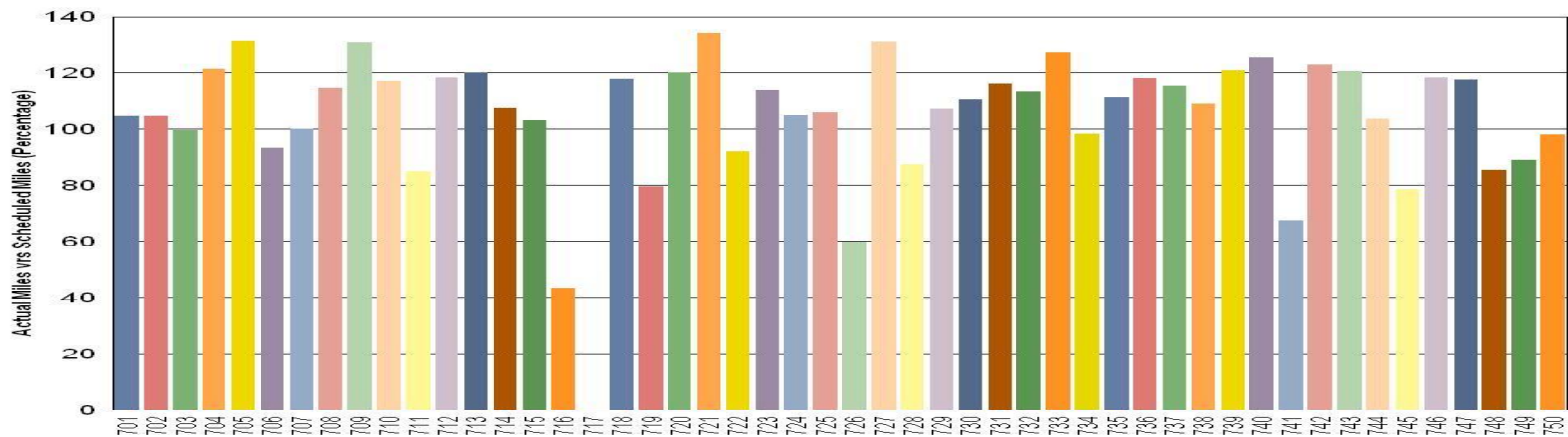
Metro Red/Purple Line



Gold Line:

Car # 717 Out of service for replacement of burnt wiring

Metro Gold Line

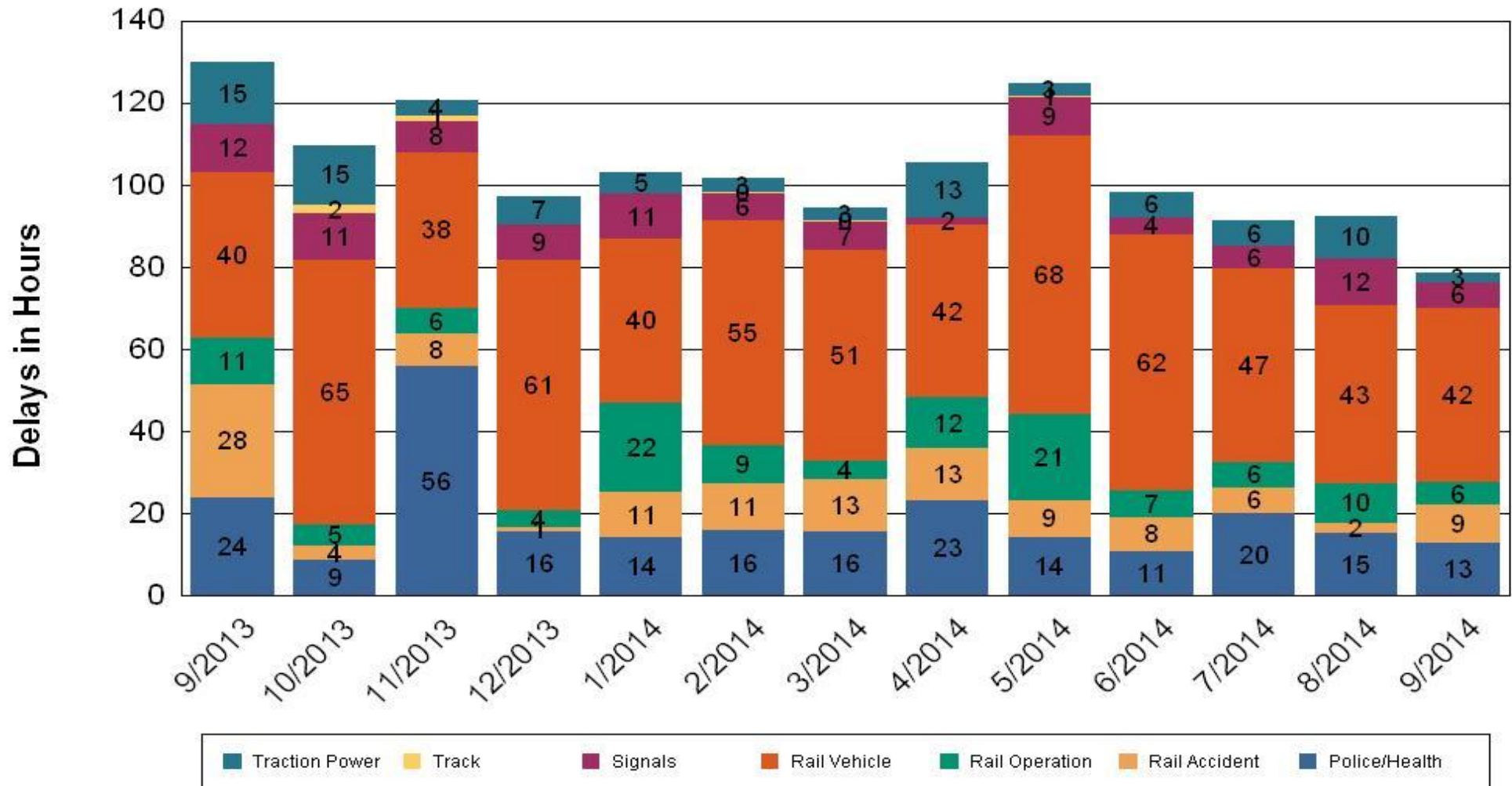


•Percentage includes an average 4% mileage deduction for yard mileage and vehicle testing.

All Train Delay (Hours) September 2013-2014

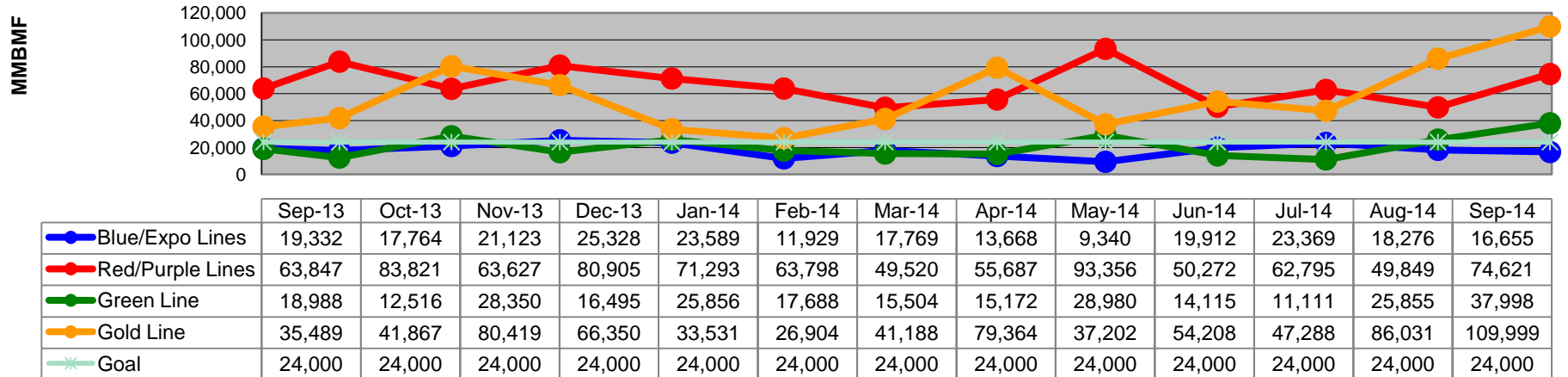
All Train Delays

Totals Include the delay to all trains involved (not just the primary incident)

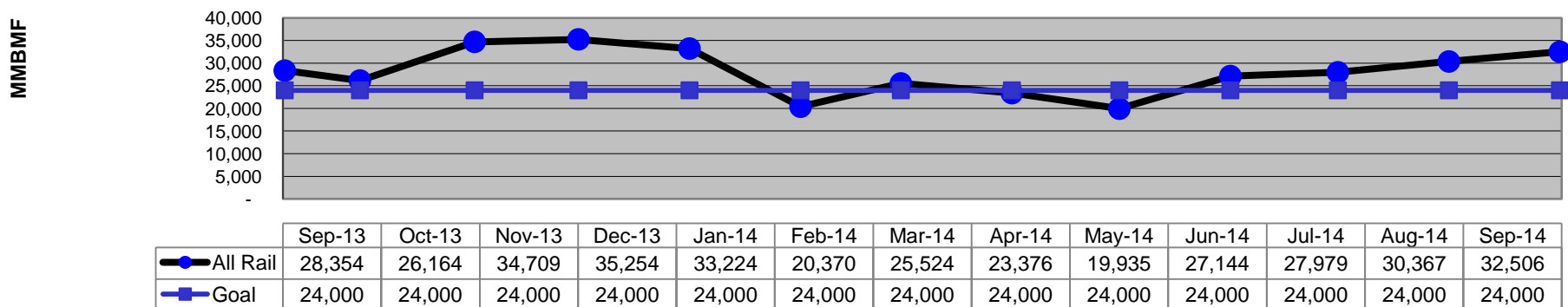


Mean Miles Between Failures (Major) September 2013-2014

Mean Miles Between Major Failures (by line)

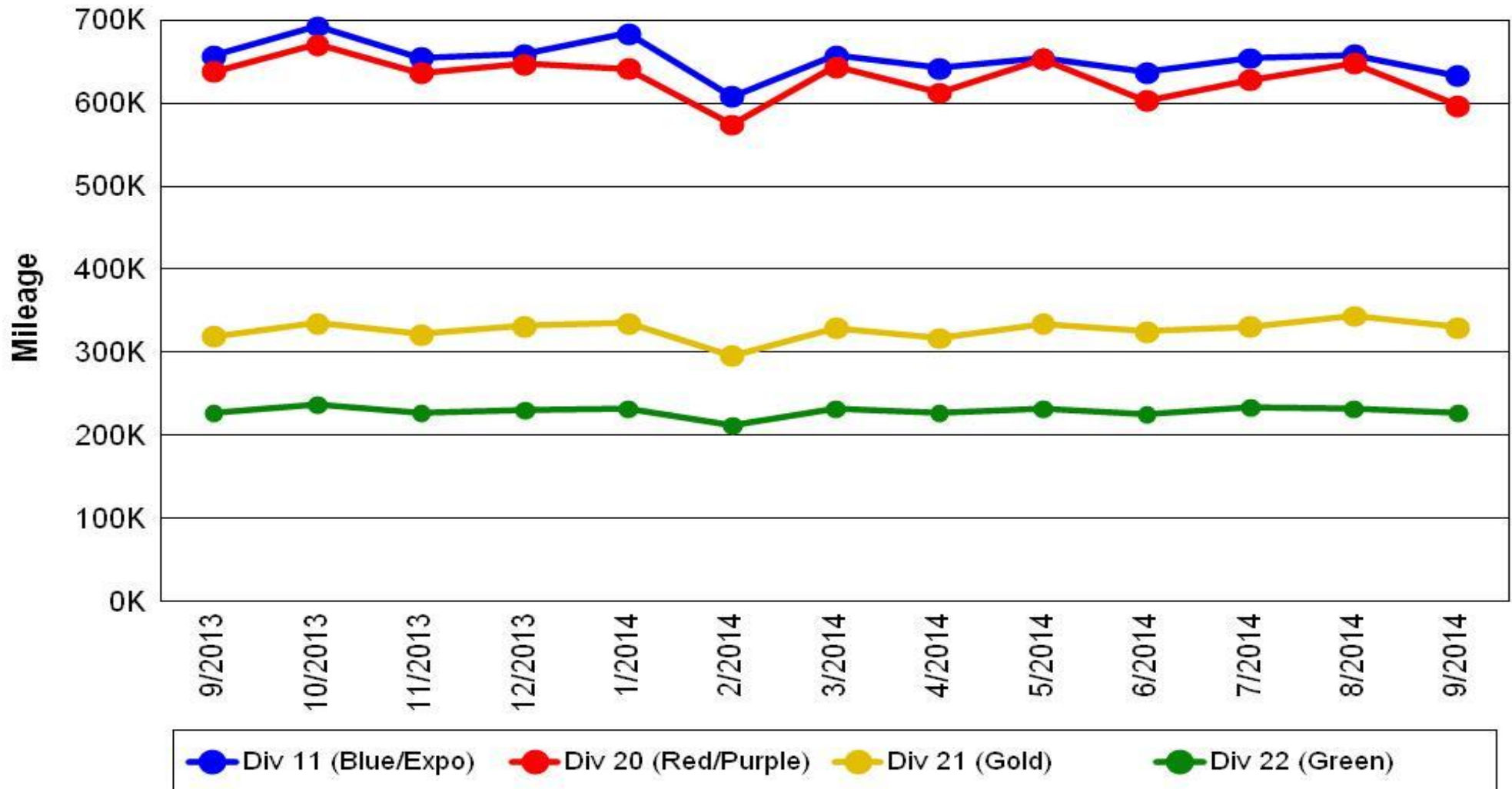


Mean Miles Between Major Failures (all)



Mileage Between Data Range (by month) September 2013-2014

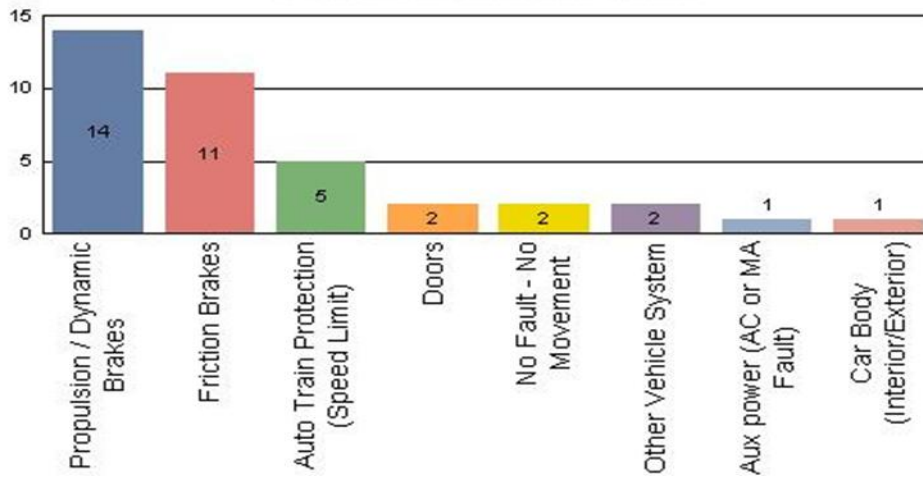
Rail Division Monthly Mileage



Top Incident Categories September 2014

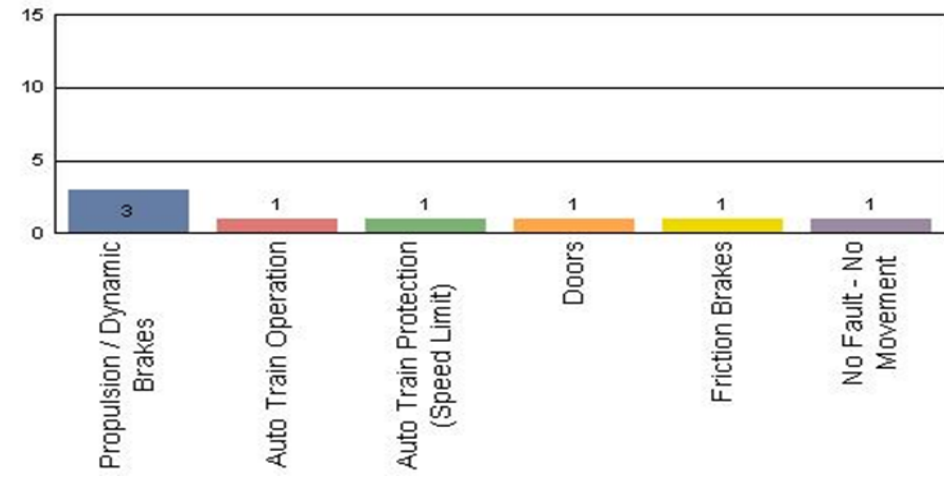
Metro Blue/Expo Line

Top Incident Categories



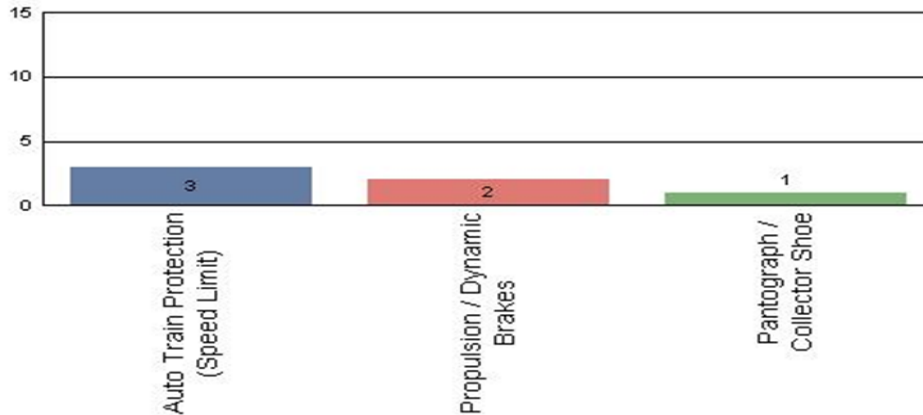
Metro Red/Purple Line

Top Incident Categories



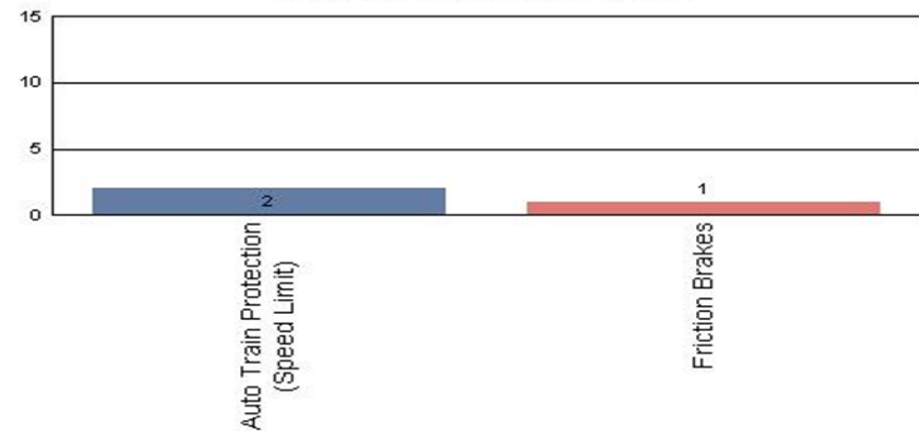
Metro Green Line

Top Incident Categories



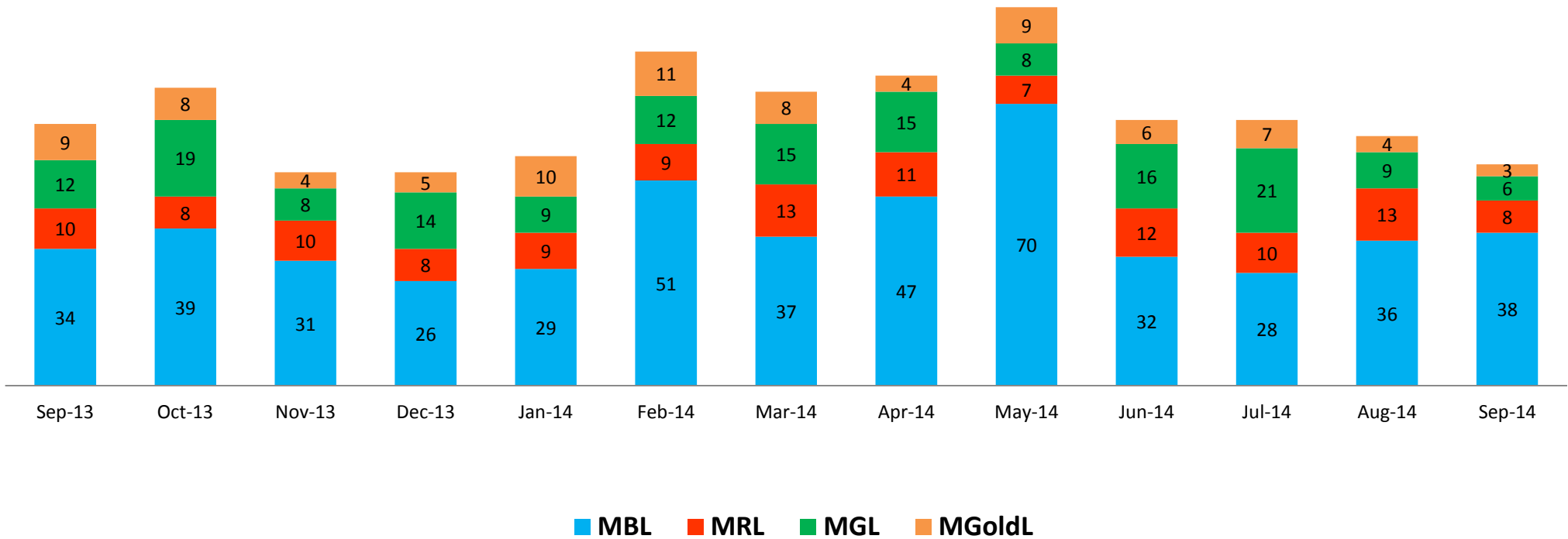
Metro Gold Line

Top Incident Categories



Major Incidents September 2013-2014

Numbers of Major Incidents by Line

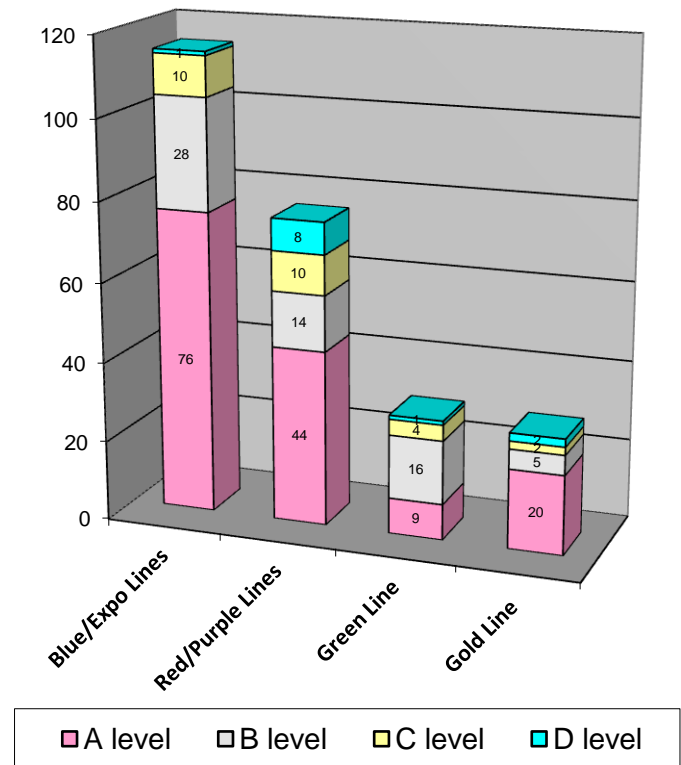


Preventive Maintenance Compliance September 2013-2014

| PM Compliance | Sep-13 | Oct-13 | Nov-13 | Dec-13 | Jan-14 | Feb-14 | Mar-14 | Apr-14 | May-14 | Jun-14 | Jul-14 | Aug-14 | Sep-14 |
|------------------|--------|--------|--------|--------|--------|--------|--------|--------|--------|--------|--------|--------|--------|
| Blue/Expo Lines | 100% | 100% | 100% | 100% | 100% | 100% | 100% | 100% | 100% | 100% | 100% | 100% | 100% |
| Red/Purple Lines | 100% | 100% | 100% | 100% | 100% | 100% | 100% | 100% | 100% | 100% | 100% | 100% | 100% |
| Green Line | 100% | 96% | 92% | 100% | 100% | 100% | 100% | 100% | 100% | 97%* | 100% | 100% | 100% |
| Gold Line | 100% | 100% | 100% | 100% | 100% | 100% | 100% | 100% | 100% | 100% | 100% | 100% | 100% |

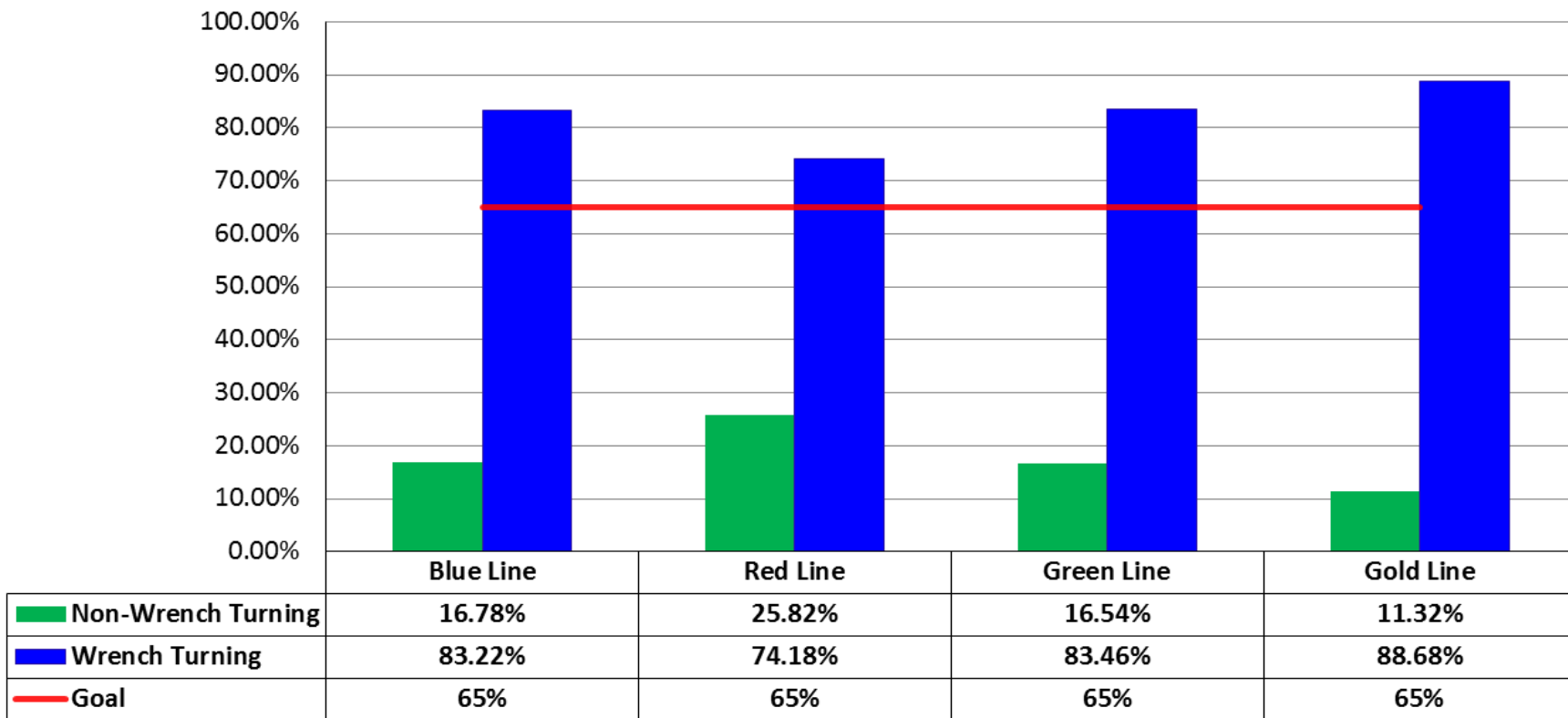
| Number of Preventive Maintenance Inspections - September 2014 | | | | | |
|---|------------|-----------|-----------|-----------|------------|
| Line | A level | B level | C level | D level | Totals |
| Blue/Expo Lines | 76 | 28 | 10 | 1 | 115 |
| Red/Purple Lines | 44 | 14 | 10 | 8 | 76 |
| Green Line | 9 | 16 | 4 | 1 | 30 |
| Gold Line | 20 | 5 | 2 | 2 | 29 |
| Totals: | 149 | 63 | 26 | 12 | 250 |

| Explanation of PM Inspection levels | | Miles | | | |
|-------------------------------------|------------|---------|---------|---------|---------|
| Line | Type | A level | B level | C level | D level |
| Blue/Expo Lines | P865/P2020 | 5,000 | 15,000 | 30,000 | 60,000 |
| Blue/Expo Lines | P2000 | 7,500 | 22,500 | 45,000 | 90,000 |
| Red/Purple Lines | A650 | 7,500 | 22,500 | 45,000 | 90,000 |
| Green Line | P2000 | 7,500 | 22,500 | 45,000 | 90,000 |
| Gold Line | P2550 | 10,000 | 30,000 | 60,000 | 120,000 |



RFS Wrench Turning September 2014

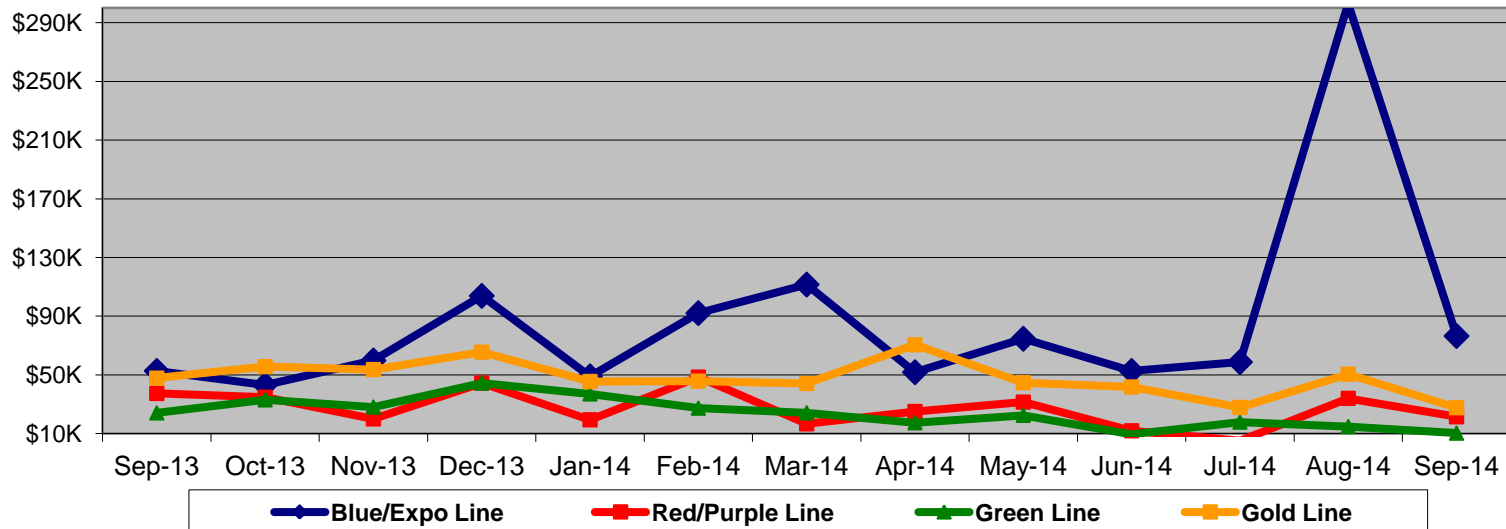
RFS - Wrench Turning September 2014



Vandalism & Graffiti Report

September 2013-2014

| | Graffiti Costs | | | | | | | | | | | | | |
|-----------------|----------------|--------|--------|--------|--------|--------|--------|--------|--------|--------|--------|--------|--------|-----------------|
| | Sep-13 | Oct-13 | Nov-13 | Dec-13 | Jan-14 | Feb-14 | Mar-14 | Apr-14 | May-14 | Jun-14 | Jul-14 | Aug-14 | Sep-14 | 13-Month Period |
| Blue/Expo Line | \$53K | \$43K | \$60K | \$104K | \$49K | \$92K | \$112K | \$52K | \$75K | \$53K | \$59K | \$303K | \$77K | \$1130K |
| Red/Purple Line | \$37K | \$35K | \$20K | \$44K | \$19K | \$49K | \$17K | \$25K | \$32K | \$12K | \$5K | \$34K | \$22K | \$351K |
| Green Line | \$24K | \$33K | \$28K | \$44K | \$37K | \$27K | \$24K | \$17K | \$22K | \$9K | \$18K | \$15K | \$10K | \$311K |
| Gold Line | \$48K | \$56K | \$54K | \$66K | \$46K | \$46K | \$44K | \$71K | \$45K | \$42K | \$28K | \$51K | \$28K | \$621K |
| Totals: | \$162K | \$167K | \$162K | \$258K | \$151K | \$214K | \$197K | \$165K | \$173K | \$116K | \$110K | \$402K | \$136K | \$2,412K |



| September 2014 Vandalism & Graffiti - All Rail | | | | |
|--|--------------|------------------|------------------|-------------------|
| | Qty | Labor | Materials | Totals |
| Windows Replaced | 127 | \$ 14,616 | \$ 29,341 | \$ 43,957 |
| Vandal Shields Replaced | 232 | \$ 3,570 | \$ 2,588 | \$ 6,158 |
| Seats Cleaned | 680 | \$ 2,701 | \$ - | \$ 2,701 |
| Seats Inserts Replaced | 526 | \$ 16,569 | \$ 21,178 | \$ 37,747 |
| Graffiti Removal - Other | 930 | \$ 38,032 | \$ 2,553 | \$ 40,585 |
| Repainting Panels | 154 | \$ - | \$ 4,851 | \$ 4,851 |
| Totals | 2,649 | \$ 75,488 | \$ 60,511 | \$ 135,999 |

Graffiti Pictures September 2014

Blue Line

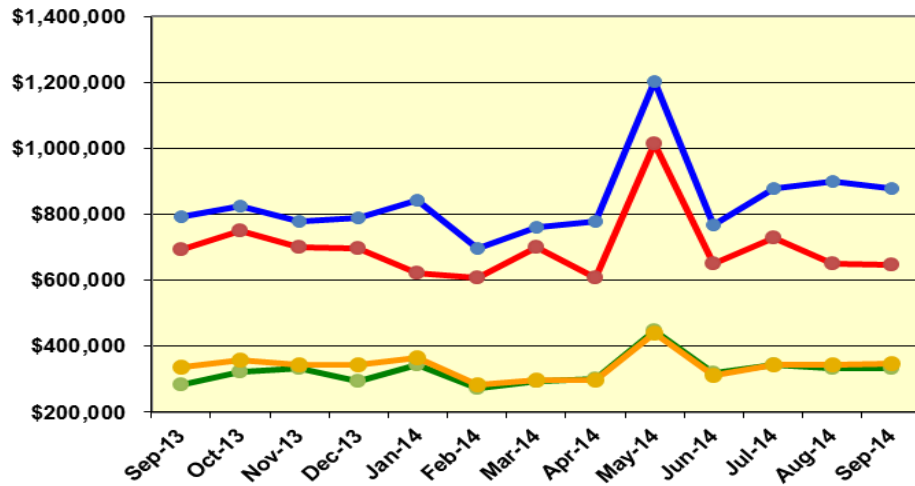


Green Line

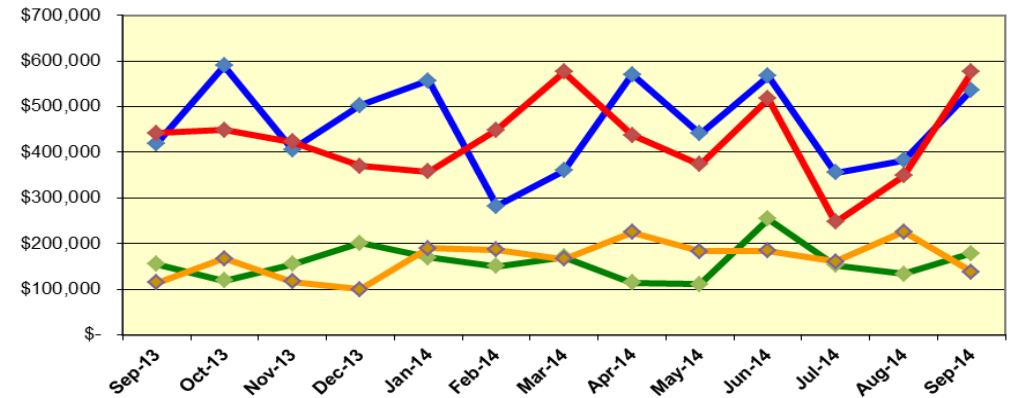


Labor and Material Costs September 2013-2014

Labor Costs



Material Costs



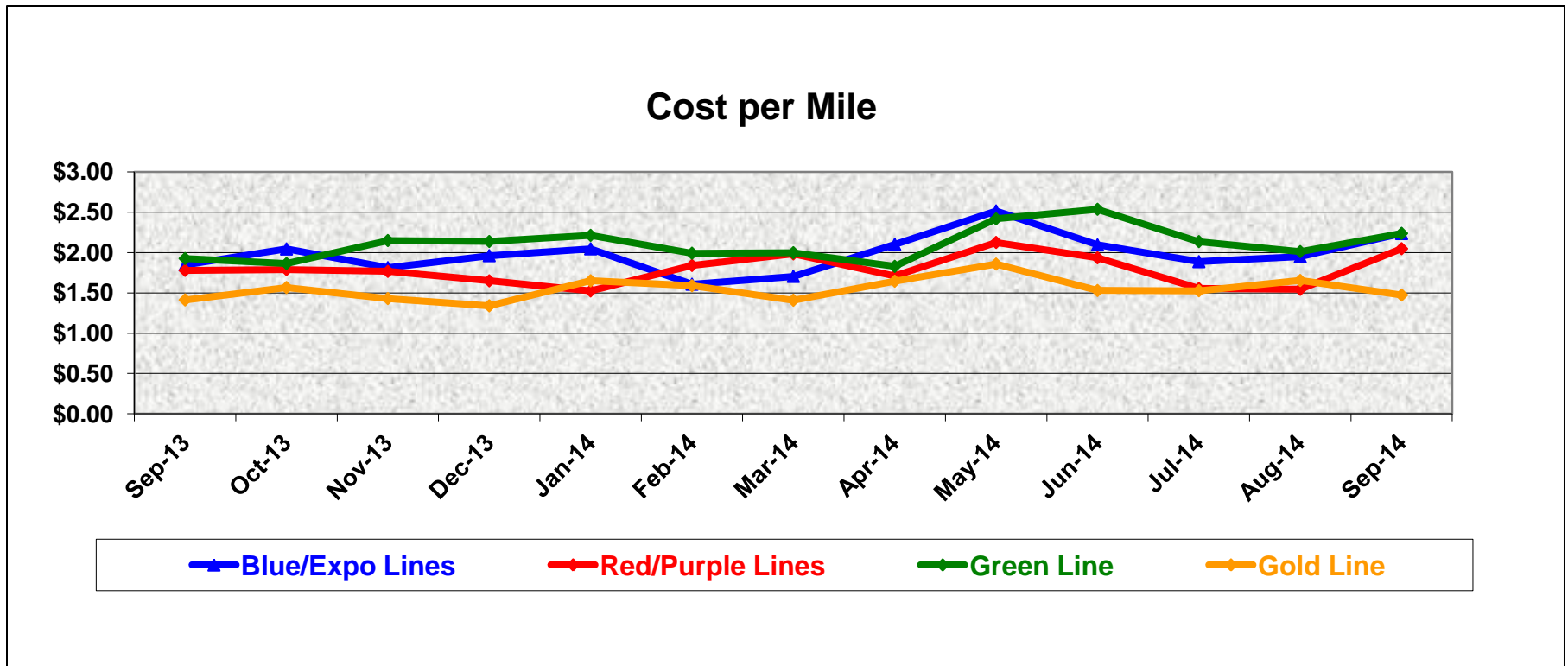
| | Sep-13 | Oct-13 | Nov-13 | Dec-13 | Jan-14 | Feb-14 | Mar-14 | Apr-14 | May-14* | Jun-14 | Jul-14 | Aug-14 | Sep-14 |
|------------------|--------------|--------------|--------------|--------------|--------------|--------------|--------------|--------------|--------------|--------------|--------------|--------------|--------------|
| LABOR COSTS | | | | | | | | | | | | | |
| Blue/Expo Lines | \$ 794,828 | \$ 826,769 | \$ 780,678 | \$ 788,589 | \$ 842,979 | \$ 695,394 | \$ 760,511 | \$ 778,469 | \$ 1,204,234 | \$ 767,717 | \$ 879,339 | \$ 900,043 | \$ 878,598 |
| Red/Purple Lines | \$ 693,597 | \$ 750,452 | \$ 700,975 | \$ 697,759 | \$ 620,440 | \$ 608,097 | \$ 701,156 | \$ 608,816 | \$ 1,015,092 | \$ 650,226 | \$ 728,383 | \$ 652,202 | \$ 645,981 |
| Green Line | \$ 284,105 | \$ 323,749 | \$ 332,737 | \$ 292,482 | \$ 345,262 | \$ 271,877 | \$ 294,381 | \$ 302,213 | \$ 449,117 | \$ 318,516 | \$ 345,270 | \$ 334,772 | \$ 331,870 |
| Gold Line | \$ 336,795 | \$ 357,408 | \$ 343,700 | \$ 345,170 | \$ 363,886 | \$ 283,563 | \$ 298,069 | \$ 297,634 | \$ 438,759 | \$ 313,589 | \$ 344,331 | \$ 343,246 | \$ 348,288 |
| Totals | \$ 2,109,325 | \$ 2,258,378 | \$ 2,158,090 | \$ 2,123,999 | \$ 2,172,567 | \$ 1,858,931 | \$ 2,054,117 | \$ 1,987,132 | \$ 3,107,202 | \$ 2,050,048 | \$ 2,297,323 | \$ 2,230,262 | \$ 2,204,736 |

*ATU Contract for pay increase was approved by the Board and ATU staff got retro pay in May 2014.

| MATERIAL COSTS | | | | | | | | | | | | | |
|------------------|--------------|--------------|--------------|--------------|--------------|--------------|--------------|--------------|--------------|--------------|------------|--------------|--------------|
| Blue/Expo Lines | \$ 419,133 | \$ 589,324 | \$ 406,032 | \$ 502,761 | \$ 556,457 | \$ 282,466 | \$ 359,845 | \$ 570,775 | \$ 440,576 | \$ 567,257 | \$ 355,405 | \$ 382,184 | \$ 536,100 |
| Red/Purple Lines | \$ 441,927 | \$ 449,033 | \$ 422,849 | \$ 369,819 | \$ 357,244 | \$ 448,225 | \$ 575,495 | \$ 437,612 | \$ 373,815 | \$ 516,934 | \$ 247,048 | \$ 348,370 | \$ 576,230 |
| Green Line | \$ 154,678 | \$ 119,411 | \$ 154,582 | \$ 201,035 | \$ 169,759 | \$ 150,881 | \$ 170,250 | \$ 113,979 | \$ 111,344 | \$ 254,264 | \$ 153,001 | \$ 133,386 | \$ 178,206 |
| Gold Line | \$ 114,461 | \$ 167,128 | \$ 116,167 | \$ 99,267 | \$ 189,310 | \$ 186,640 | \$ 166,216 | \$ 224,430 | \$ 183,115 | \$ 183,869 | \$ 160,751 | \$ 225,818 | \$ 137,883 |
| Totals | \$ 1,130,199 | \$ 1,324,896 | \$ 1,099,631 | \$ 1,172,883 | \$ 1,272,769 | \$ 1,068,212 | \$ 1,271,807 | \$ 1,346,796 | \$ 1,108,849 | \$ 1,522,323 | \$ 916,204 | \$ 1,089,759 | \$ 1,428,418 |

Cost Per Mile September 2013-2014

| Cost per mile: | Sep-13 | Oct-13 | Nov-13 | Dec-13 | Jan-14 | Feb-14 | Mar-14 | Apr-14 | May-14 | Jun-14 | Jul-14 | Aug-14 | Sep-14 |
|------------------|--------|--------|--------|--------|--------|--------|--------|--------|--------|--------|--------|--------|--------|
| Blue/Expo Lines | \$1.85 | \$2.04 | \$1.81 | \$1.96 | \$2.05 | \$1.61 | \$1.70 | \$2.10 | \$2.52 | \$2.10 | \$1.89 | \$1.95 | \$2.24 |
| Red/Purple Lines | \$1.78 | \$1.79 | \$1.77 | \$1.65 | \$1.52 | \$1.84 | \$1.98 | \$1.71 | \$2.13 | \$1.93 | \$1.55 | \$1.54 | \$2.05 |
| Green Line | \$1.93 | \$1.86 | \$2.15 | \$2.14 | \$2.21 | \$1.99 | \$2.00 | \$1.83 | \$2.42 | \$2.54 | \$2.14 | \$2.01 | \$2.24 |
| Gold Line | \$1.41 | \$1.57 | \$1.43 | \$1.34 | \$1.65 | \$1.59 | \$1.41 | \$1.64 | \$1.86 | \$1.53 | \$1.53 | \$1.65 | \$1.47 |



ATU Absences vs. Overtime

September 2014

| ABSENCE TYPE and HOURS | 3941 & 3947 Blue & Expo | 3942 Red | 3943 Green | 3944 Gold | Total |
|-------------------------------------|----------------------------|--------------|---------------|--------------|---------------|
| AWP-ABSENT W/O PERMISSION | 8 | - | - | - | 8 |
| BER-BEREAVEMENT | 24 | - | 64 | - | 88 |
| CTO-COMPENSATORY TIME OFF | 302 | 199 | 68 | 32 | 601 |
| CUT-EMPLOYEE LEAVES EARLY | 3 | - | 2 | - | 5 |
| CVA - CASUAL VACATION | 240 | 295 | 108 | 96 | 739 |
| DSL-DISABILITY LEAVE/LONG | 676 | 544 | 344 | 16 | 1,580 |
| EFH-EMG. FLOAT HOL. | - | 40 | 24 | 16 | 80 |
| ETO-EXCUSED TIME OFF | 71 | 31 | 15 | 76 | 193 |
| FMI-FAM IND INJURY | 8 | - | - | 16 | 24 |
| FML-FAMILY CARE LEAVE | 676 | 322 | 520 | 176 | 1,694 |
| FMS-FAMILY LEAVE SICK | 96 | 114 | 40 | 40 | 290 |
| HLF-HOLIDAY FLOATING | 408 | 312 | 176 | 192 | 1,088 |
| HNP-HOLIDAY NOT PAID | - | 8 | 24 | - | 32 |
| HOL-HOLIDAY LEGAL | 536 | 440 | 72 | 128 | 1,176 |
| II-INDUSTRIAL INJURY | - | - | 120 | - | 120 |
| JUR-JURY DUTY | 16 | 32 | 16 | - | 64 |
| LC1-LABOR CODE 233 | 112 | 188 | 76 | 112 | 488 |
| LTI-OCCPIL/LONGTRM INJ LEAVE | 176 | 88 | - | - | 264 |
| MLN-MILITARY ABSENCE-UNPAID | - | 80 | - | - | 80 |
| OWP-OFF WITH PERMISSION | - | 36 | - | 4 | 40 |
| RTO-REQUESTED TIME OFF-NO PAY | 40 | - | 8 | - | 48 |
| SCK-SICK PAY | 300 | 128 | 96 | 120 | 644 |
| SCW-SICK WITHOUT PAY | 86 | 16 | 40 | - | 142 |
| TAR-TARDY | 1 | 2 | 2 | - | 5 |
| VAC-VACATION | 1,246 | 832 | 320 | 784 | 3,182 |
| VAS-VACATION WHILE SICK | - | 16 | - | - | 16 |
| Total Absence Hours | 5,026 | 3,724 | 2,134 | 1,808 | 12,693 |
| ATU Number of Work Force (assigned) | 135 | 109 | 48 | 52 | 344 |
| Full Work Force hours/month | 23,396 | 18,890 | 8,318 | 9,012 | 59,615 |
| Absence as a % of Work Force | 21% | 20% | 26% | 20% | 21% |

| OVERTIME TYPE and HOURS | 3941 & 3947 Blue & Expo | 3942 Red | 3943 Green | 3944 Gold | Total |
|--------------------------------------|----------------------------|--------------|---------------|--------------|---------------|
| CTB-COMPENSATORY TIME TO BANK | 320 | 183 | 22 | 90 | 616 |
| OTP-PREM OVERTIME | 5,469 | 4,164 | 1,849 | 1,829 | 13,311 |
| WLO-Worked Lunch Overtime | 185 | 130 | 133 | 85 | 532 |
| Total Overtime Hours | 5,974 | 4,477 | 2,003 | 2,004 | 14,459 |
| Overtime as a % of Work Force | 26% | 24% | 24% | 22% | 24% |



Metro

Note: Overtime also covers other required activities, including Training, Component Overhaul, and Special Events.

RFS Instruction Department Activities

September 2014

Training classes completed during the month of September 2014

| Description | Course Hours | Student Count | Training Hours |
|--|--------------|---------------|-------------------|
| <u>Blue & Expo Line Training - (P865/2020 & P2000 LRV):</u> | | | |
| RFS 865/2020 COMMUNICATIONS | 8 | 5 | 40 |
| RFS 865/2020 CAR BODY | 8 | 5 | 40 |
| RFS 865/2020 LVPS & BATTERY | 8 | 5 | 40 |
| RFS 865/2020 DOOR CONTROL SYS. | 56 | 5 | 280 |
| Total Blue Line Training (Hours): | | | 400 |
| <u>Red Line Training (Breda A650 HRV):</u> | | | |
| RFS SIMMONS WHEEL TRUE | 24 | 2 | 48 |
| RFS BREDA 650 MAINLINE DUTY, DEAD TOW AND VEHICLE RECOVERY | 8 | 1 | 8 |
| Total Red Line Training (Hours): | | | 56 |
| <u>Green Line Training (P2000 LRVs):</u> | | | |
| RFS SIEMENS 2000 AUX. INVERTER | 32 | 3 | 96 |
| RFS SIEMENS 2000 US&S ATP/ATO/TWC | 24 | 4 | 96 |
| RFS SIEMENS 2000 HVAC | 16 | 3 | 48 |
| Total Green Line Training (Hours): | | | 240 |
| <u>Gold Line Training (P2550 LRVs):</u> | | | |
| RFS SIMMONS WHEEL TRUE | 24 | 3 | 72 |
| Total Gold Line Training (Hours): | | | 72 |
| <u>Total RFS Instruction for the month of September 2014 (Hours):</u> | | | <u>768</u> |

Other Instruction Activities

| | |
|--|-----|
| A650 Curriculum, Administrative, and Technical Support | 120 |
| P865/P2020 Curriculum, Administrative, and Technical Support | 80 |
| P2000 Curriculum, Administrative, and Technical Support | 56 |
| P2550 Curriculum, Administrative, and Technical Support | 140 |
| LATTC Curriculum Development (KSME) | 120 |

Total Other Instruction Activities **596**

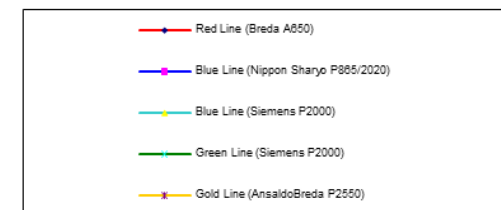
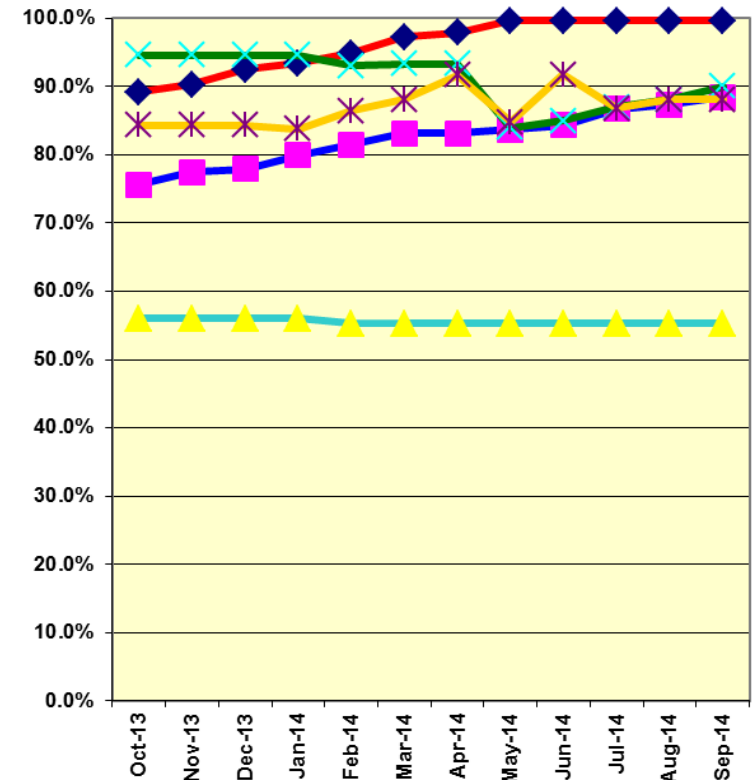
Core Vehicle Training Completed: **BLUE** **RED** **GREEN** **GOLD**

Percentage of core vehicle training complete: **88.5%** **99.6%** **90.0%** **88.1%**

Siemens P2000 training complete: **55.3%** **N/A** **N/A** **N/A**

Average Specialist Rail Experience Level in Years: **12.4** **10.9** **9.7** **9.3**

Core Training Completed



Variations caused by new hires, employee transfers, & training completed



Metro