



Rail Fleet Services Monthly Report February 2015



Metro

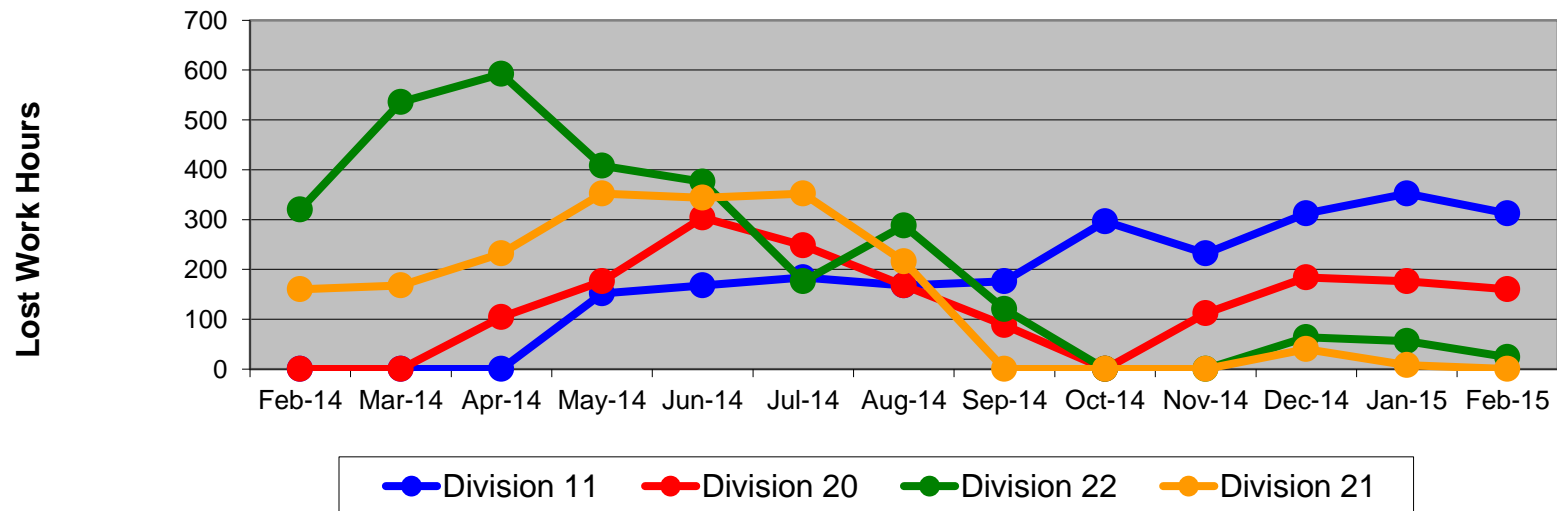
Table of Contents

•	Safety		
	- Industrial Injuries	Page	3
	- Rail Vehicle Accidents & Major Incidents	Page	4
•	Customer Service		
	- Service Delivery – AM/PM Pull-Outs	Page	5
	- Vehicle Utilization – Blue Line & Green Line	Page	6
	- Vehicle Utilization – Red Line & Gold Line	Page	7
	- All Train Delay Incidents	Page	8
	- Mean Miles Between Failures (Major)	Page	9
	- Mileage Between Data Range (by month)	Page	10
•	Business Processes		
	- Top Incident Categories	Page	11
	- Major Incidents	Page	12
	- Preventive Maintenance Compliance	Page	13
	- RFS Wrench Turning	Page	14
•	Finance		
	- Vandalism & Graffiti Costs	Page	15
	- Graffiti Pictures	Page	16
	- Labor & Material Costs	Page	17
	- Cost per mile	Page	18
	- Absence vs. Overtime	Page	19

Industrial Injuries – Lost Work Hours February 2014-2015

	Feb-14	Mar-14	Apr-14	May-14	Jun-14	Jul-14	Aug-14	Sep-14	Oct-14	Nov-14	Dec-14	Jan-15	Feb-15	13-Month Period
Division 11	0	0	0	152	168	184	168	176	296	232	312	352	312	2,352
Division 20	0	0	104	176	304	248	168	88	0	112	184	176	160	1,720
Division 22	320	536	592	408	376	176	288	120	0	0	64	56	24	2,960
Division 21	160	168	232	352	344	352	216	0	0	0	40	8	0	1,872
Totals	480	704	928	1,088	1,192	960	840	384	296	344	600	592	496	8,904

Industrial Injuries (lost work hours)



Rail Vehicle Accidents & Major Incidents

February 2014-2015

Repair Costs	Feb-14	Mar-14	Apr-14	May-14	Jun-14	Jul-14	Aug-14	Sep-14	Oct-14	Nov-14	Dec-14	Jan-15	Feb-15	13-Month Period
Blue/Expo Line	\$15,618	\$13,690	\$72,961	\$9,463	\$9,964	\$1,528	\$207	\$42,690	\$12,945	\$5,762	\$3,463	\$9,301	\$17,834	\$215,426
Red/Purple Line	\$0	\$356	\$0	\$0	\$0	\$0	\$0	\$0	\$4,194	\$0	\$0	\$0	\$0	\$4,550
Green Line	\$0	\$0	\$0	\$0	\$0	\$0	\$0	\$0	\$267	\$0	\$0	\$0	\$0	\$267
Gold Line	\$0	\$714	\$0	\$0	\$5,860	\$50,059	\$1,669	\$0	\$0	\$0	\$5,664	\$0	\$315	\$64,281
Totals	\$15,618	\$14,760	\$72,961	\$9,463	\$15,824	\$51,587	\$1,876	\$42,690	\$17,406	\$5,762	\$9,127	\$9,301	\$18,149	\$284,524

Rail Vehicle Accident Costs - February 2015				
Date	Incident #	Problem Code	Incident Description	Repair Cost
Metro Blue/Expo Line				
2/6/15	2559983	Train vs. Vehicle	A 10-73 was reported at Track #4, Southbound, 7th Ave.	\$ 17,321
2/7/15	2560028	Train vs. Object	A 10-71 was reported, train bumping post #3 at Culver City Station.	\$ 64
2/8/15	2560386	Train vs. Object	A 10-71 was reported at Track #2, Southbound, Greenleaf crossing.	\$ 449
Total				\$ 17,834
Metro Gold Line				
2/11/15	2561491	Train vs. Other	Incident was reported, train hitting a bicyclist at Avenue 53, Track #2.	\$ 315
Total				\$ 315
Grand Total				\$ 18,149
(10-71) = Train vs. Object, (10-72) = Train vs. Pedestrian, (10-73) = Train vs. Vehicle (10-74) = Train vs. MTA Vehicle, (10-75) = Derailment				

Note: Repair costs are only the expenses captured during the time period of the report. Actual costs may be significantly higher, if repairs are spread out over several months.

Service Delivery February 2015

February 2015 - Service Delivery

Blue/Expo Line Fleet Size: 92

<u>Pull Out</u>	<u>Vehicles Required</u>	<u>Average Available</u>	<u>% Up (Down)</u>
Weekday:	78	79	101%
Weekend:	60	65	108%
Late Pullouts: 1			
Monthly Mileage:	575,546		

Red/Purple Line Fleet Size: 104

<u>Pull Out</u>	<u>Vehicles Required</u>	<u>Average Available</u>	<u>% Up (Down)</u>
Weekday:	74	80	108%
Weekend:	54	66	122%
Late Pullouts: 0			
Monthly Mileage:	564,830		

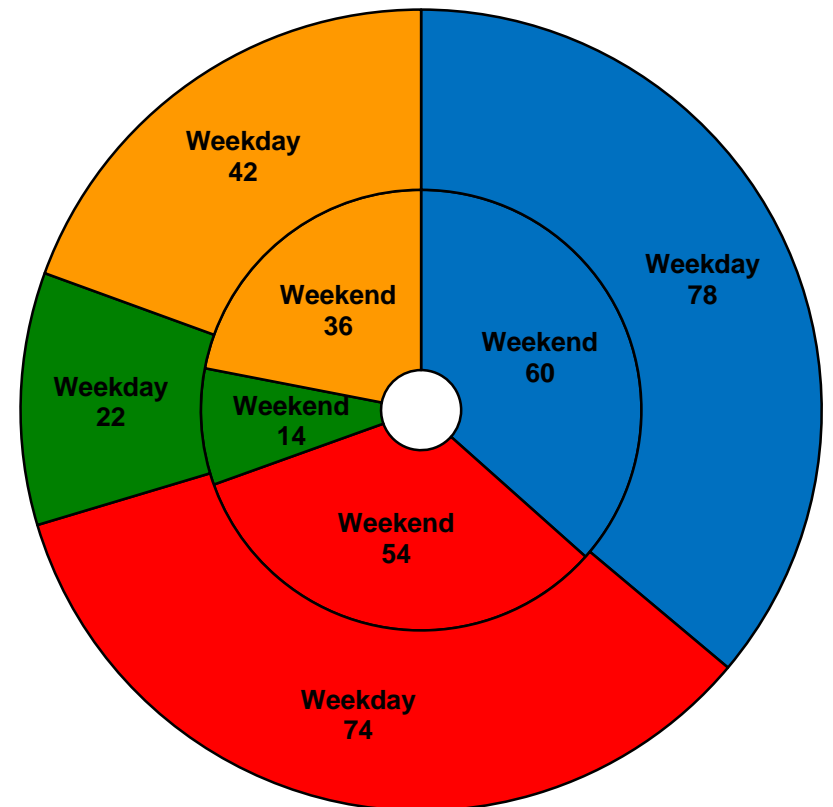
Green Line Fleet Size: 29

<u>Pull Out</u>	<u>Vehicles Required</u>	<u>Average Available</u>	<u>% Up (Down)</u>
Weekday:	22	22	100%
Weekend:	14	15	107%
Late Pullouts: 0			
Monthly Mileage:	211,280		

Gold Line Fleet Size: 50*

<u>Pull Out</u>	<u>Vehicles Required</u>	<u>Average Available</u>	<u>% Up (Down)</u>
Weekday:	42	43	102%
Weekend:	36	41	114%
Late Pullouts: 0			
Monthly Mileage:	294,638		

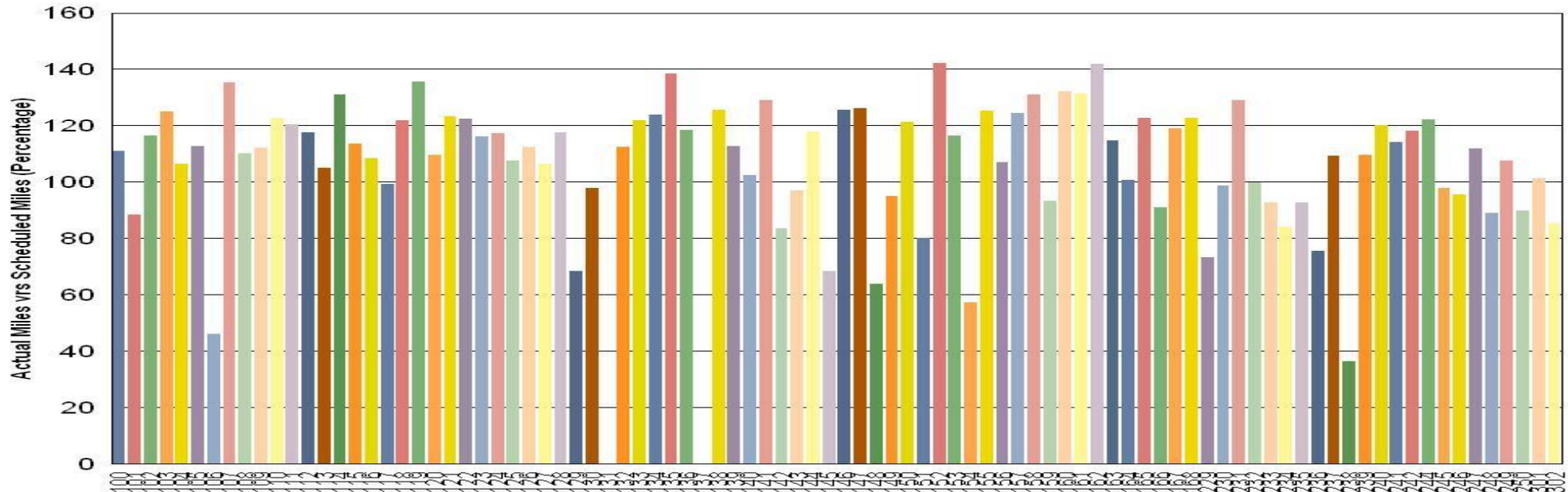
*Two LRVs transferred to Foothill Construction Authority until 2/20/2015



■ Blue/Expo Line ■ Red/Purple Line ■ Green Line ■ Gold Line

Vehicle Utilization February 2015

Metro Blue/Expo Line



Blue/Expo Line:

Car # 131 Out of service for Paint/Body Repair, Graffiti Abatement, and Inspection (30K)

Car # 137 Out of service due to Major Accident Repair and ongoing Recertification/Acceptance Testing

Car # 238 Out of service for Repair and Major Inspection (90K)

Metro Green Line

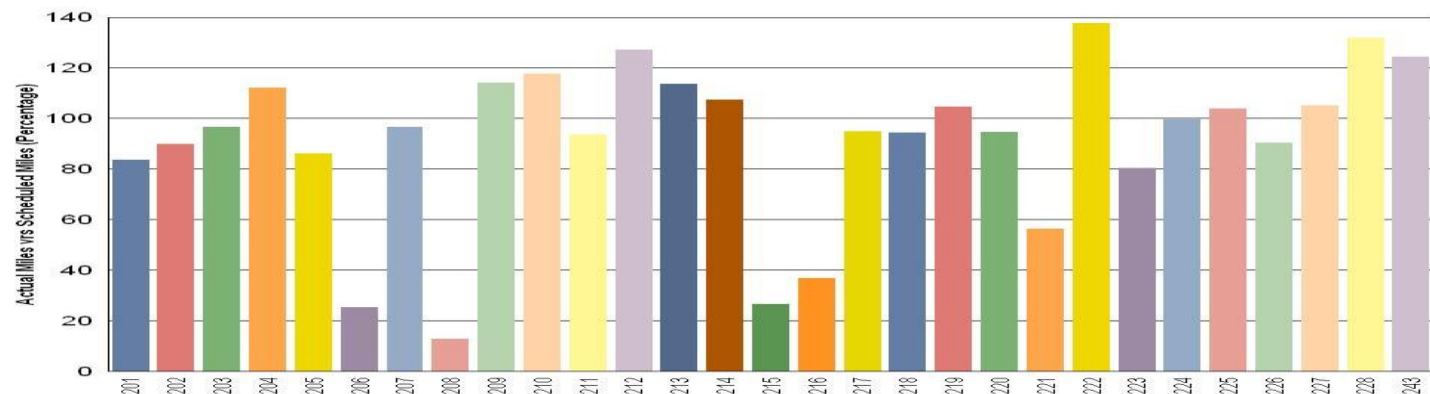
Green Line: The following cars were out of service due to:

Car # 206 ATP Problem

Car # 208 Electromagnetic Interference Fault

Car # 215 Exterior Paint/Body Rehab

Car # 216 Propulsion Fault



Note: Percentage includes an average 4% mileage deduction for yard mileage and vehicle testing.

Vehicle Utilization February 2015

Red/Purple Line:

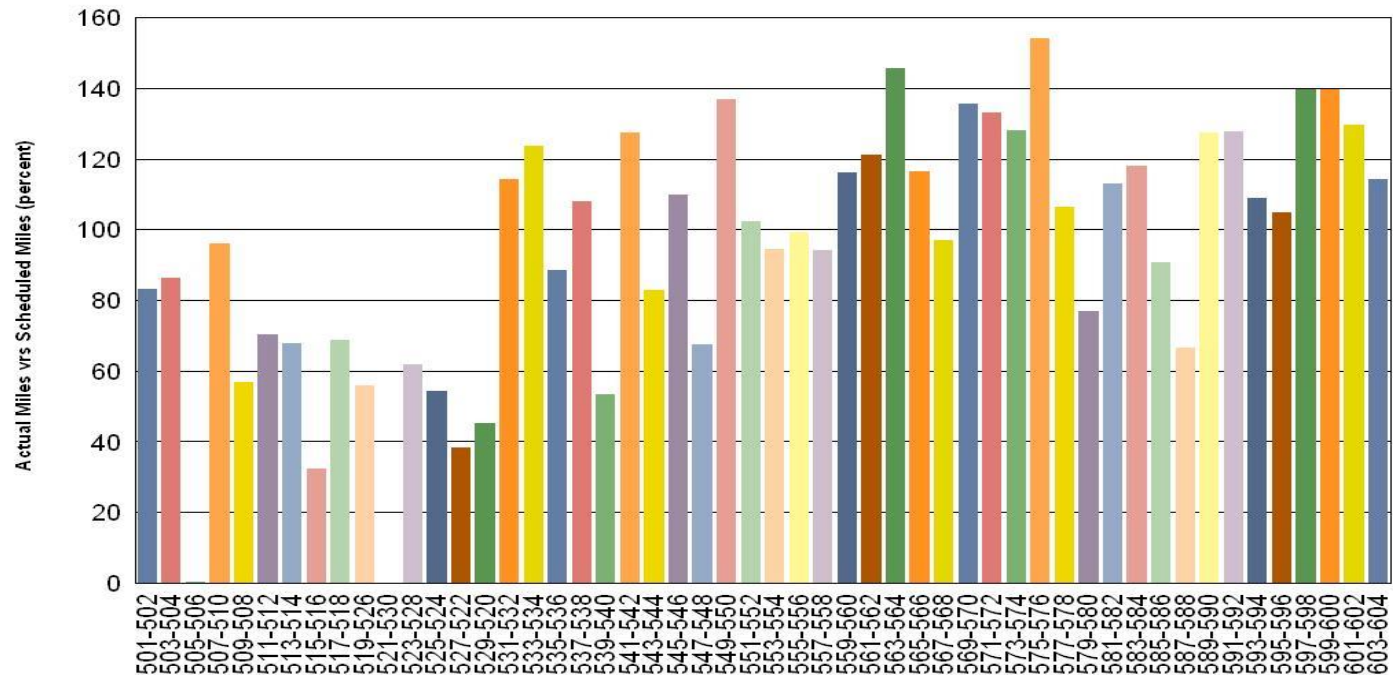
The following cars were out of service due to:

Car # 505-506 Door Campaign

Car # 521-530 Traction Motor and Truck Rebuild

Car # 527-522 Propulsion and HVAC Problems

Metro Red/Purple Line



Gold Line:

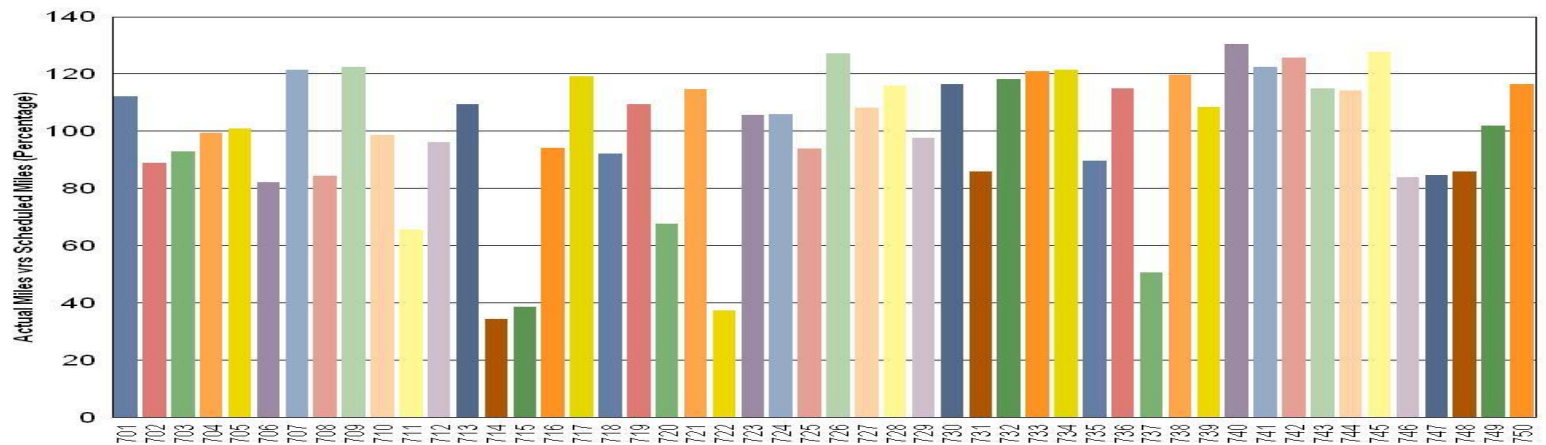
The following cars were out of service due to:

Car # 714 ATP Decelerometer Error and Door Mods

Car # 715 Wheel Truing and Door Sensitive Edges

Car # 722 Door Problems

Metro Gold Line



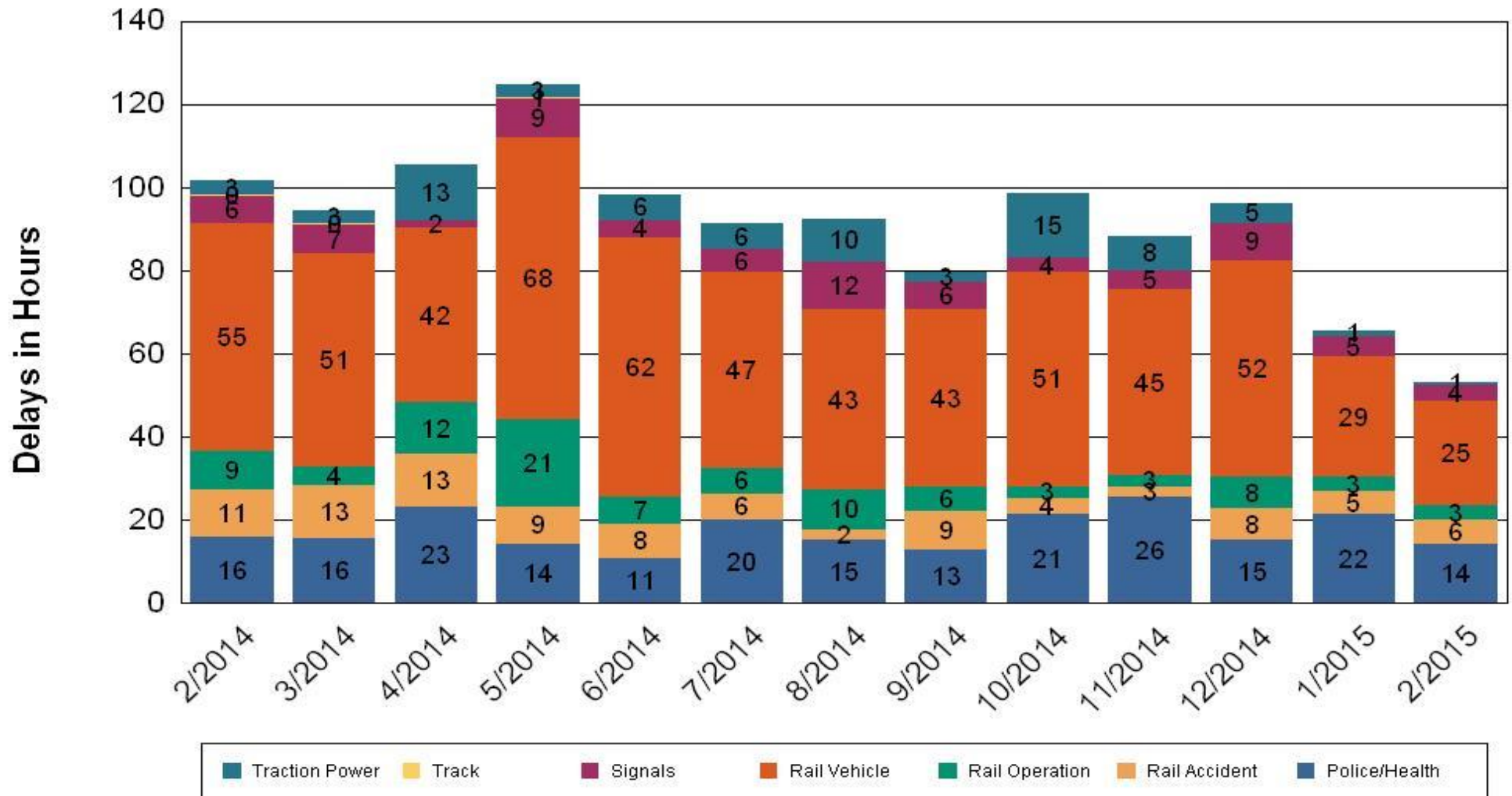
•Percentage includes an average 4% mileage deduction for yard mileage and vehicle testing.



All Train Delays (Hours) February 2014-2015

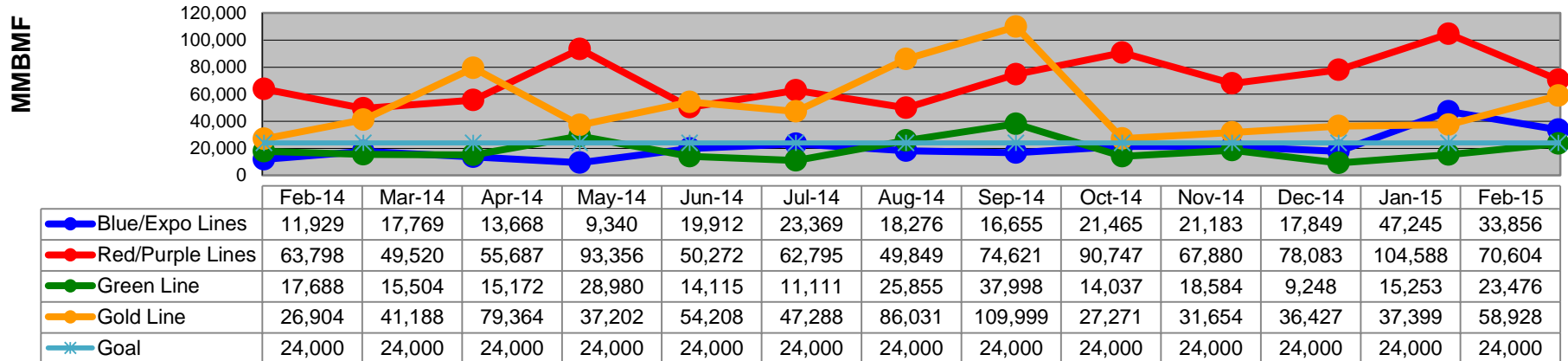
All Train Delays

Totals Include the delay to all trains involved (not just the primary incident)

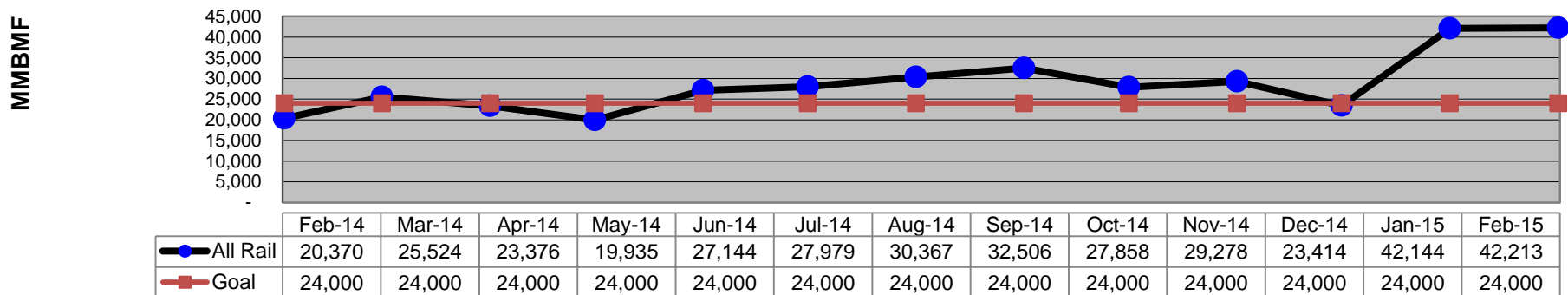


Mean Miles Between Failures (Major) February 2014-2015

Mean Miles Between Major Failures (by line)



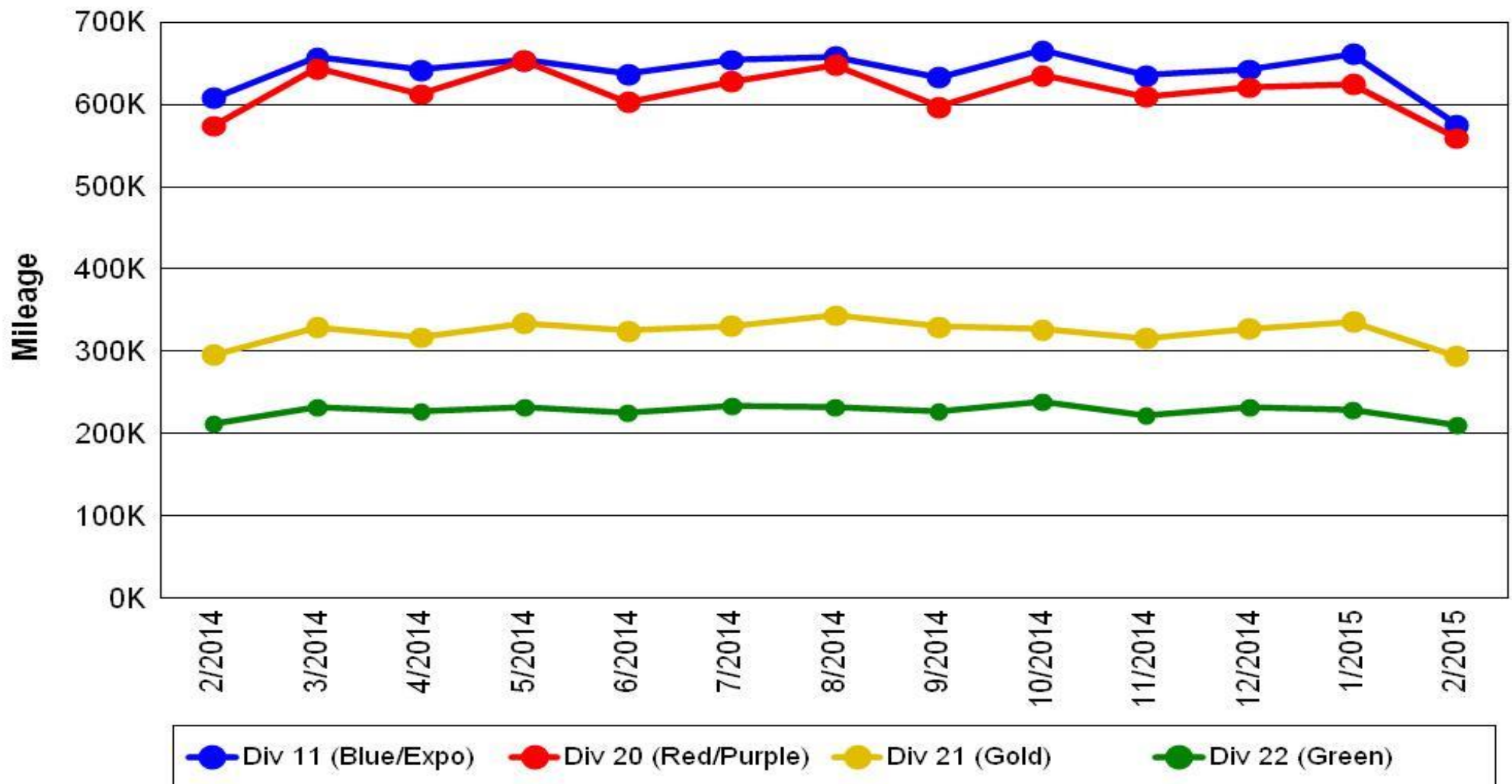
Mean Miles Between Major Failures (all)



Mileage Between Data Range (by month)

February 2014-2015

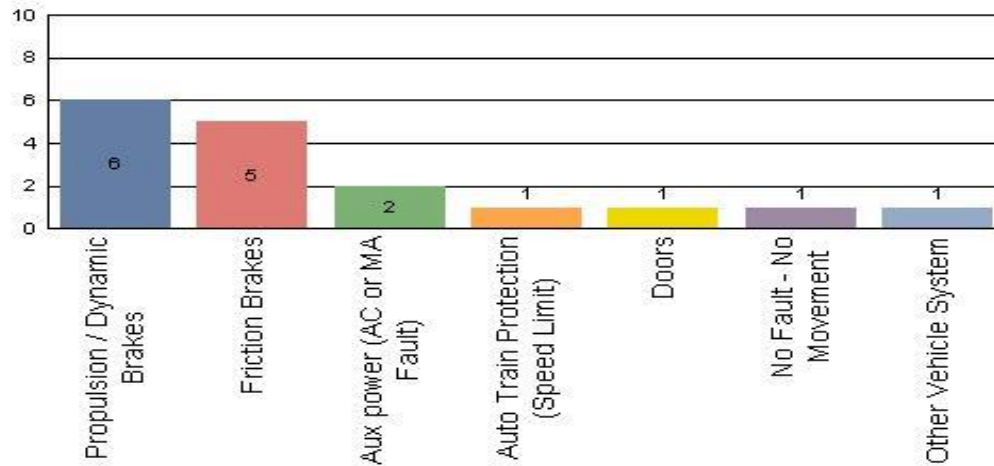
Rail Division Monthly Mileage



Top Incident Categories February 2015

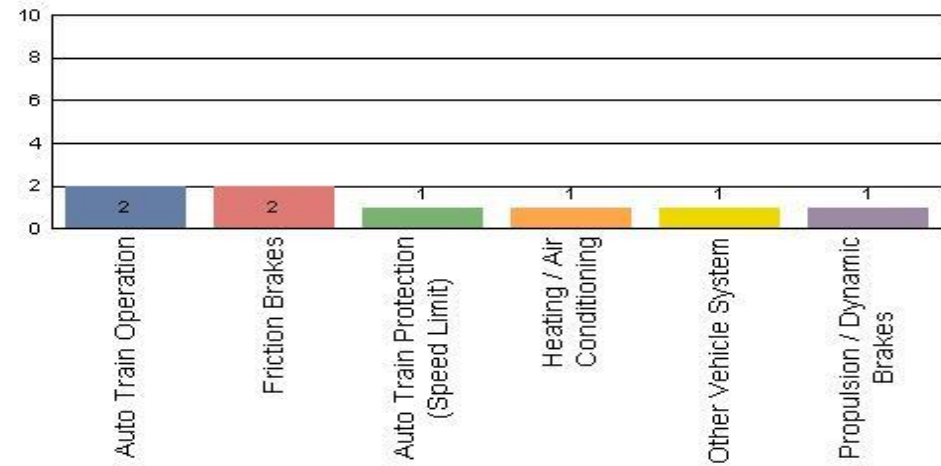
Metro Blue/Expo Line

Top Incident Categories



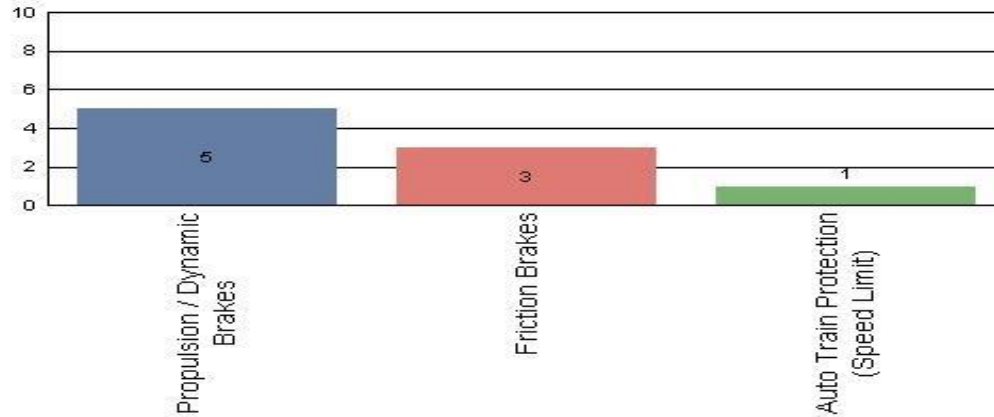
Metro Red/Purple Line

Top Incident Categories



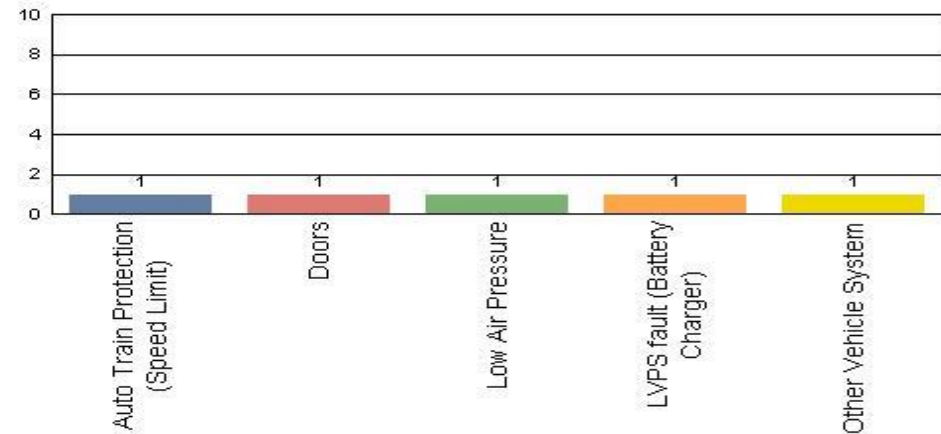
Metro Green Line

Top Incident Categories



Metro Gold Line

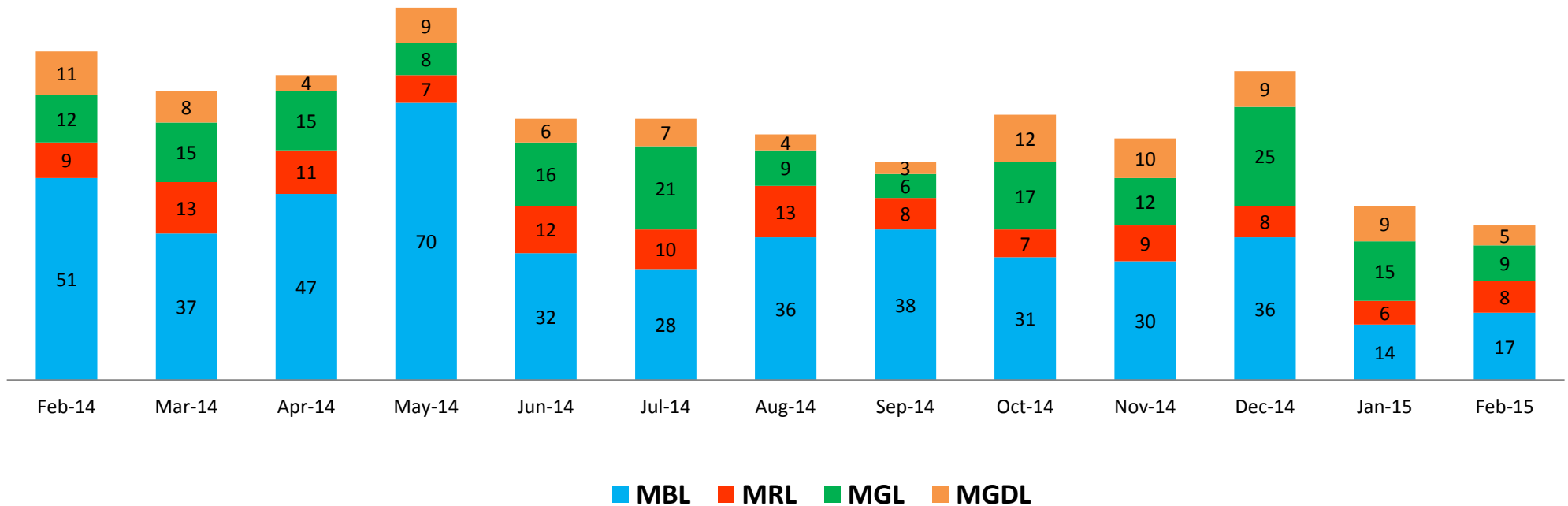
Top Incident Categories



Major Incidents

February 2014-2015

Numbers of Major System Failures (by Line)



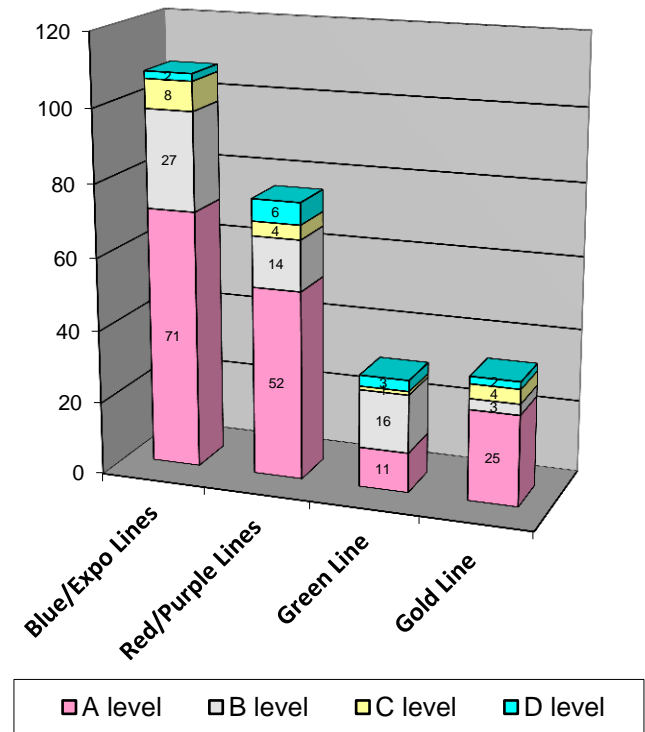
Preventive Maintenance Compliance

February 2014-2015

PM Compliance	Feb-14	Mar-14	Apr-14	May-14	Jun-14	Jul-14	Aug-14	Sep-14	Oct-14	Nov-14	Dec-14	Jan-15	Feb-15
Blue/Expo Lines	100%	100%	100%	100%	100%	100%	100%	100%	100%	100%	100%	100%	100%
Red/Purple Lines	100%	100%	100%	100%	100%	100%	100%	100%	100%	100%	100%	100%	100%
Green Line	100%	100%	100%	100%	97%	100%	100%	100%	100%	97%	100%	100%	100%
Gold Line	100%	100%	100%	100%	100%	100%	100%	100%	100%	100%	100%	100%	100%

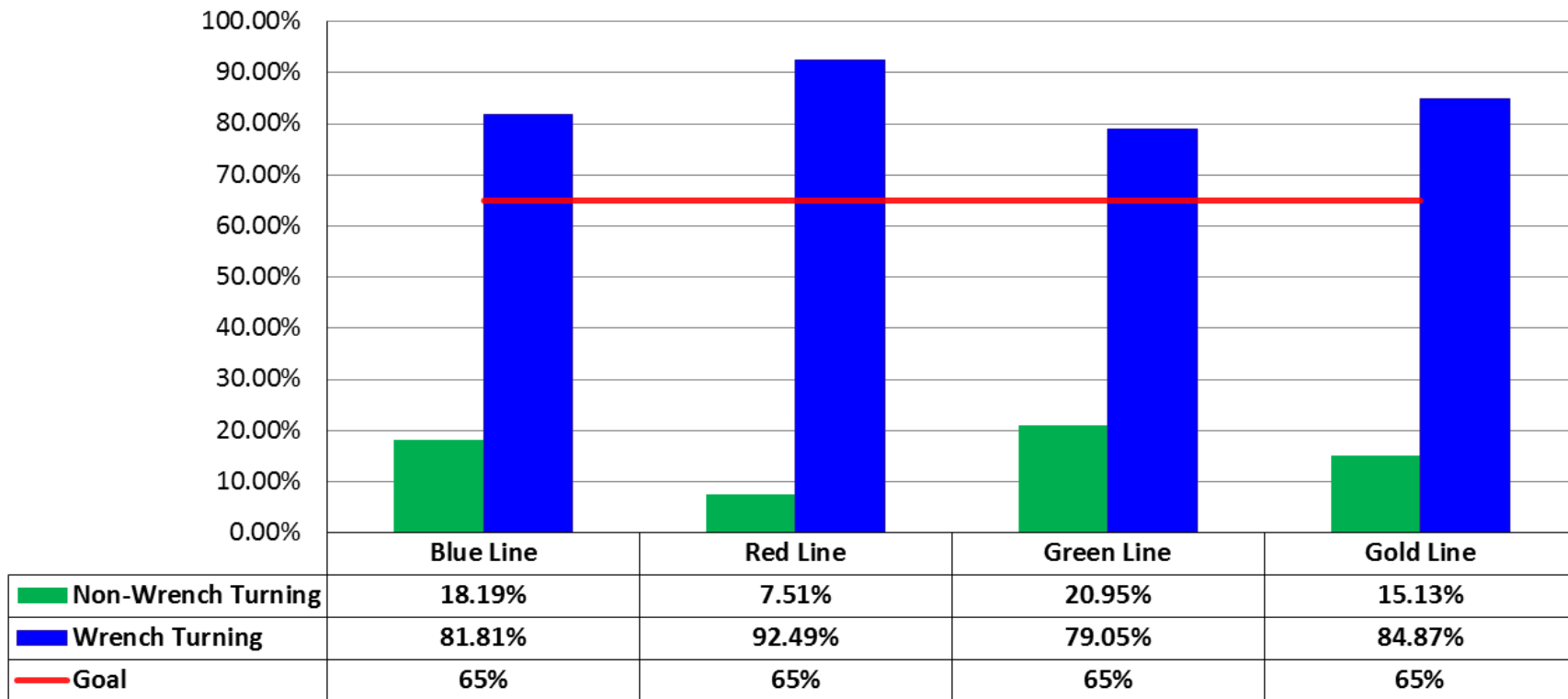
Number of Preventive Maintenance Inspections - February 2015					
Line	A level	B level	C level	D level	Totals
Blue/Expo Lines	71	27	8	2	108
Red/Purple Lines	52	14	4	6	76
Green Line	11	16	1	3	31
Gold Line	25	3	4	2	34
Totals:	159	60	17	13	249

Explanation of PM Inspection levels		Miles			
Line	Type	A level	B level	C level	D level
Blue/Expo Lines	P865/P2020	5,000	15,000	30,000	60,000
Blue/Expo Lines	P2000	7,500	22,500	45,000	90,000
Red/Purple Lines	A650	7,500	22,500	45,000	90,000
Green Line	P2000	7,500	22,500	45,000	90,000
Gold Line	P2550	10,000	30,000	60,000	120,000



RFS Wrench Turning February 2015

RFS - Wrench Turning February 2015

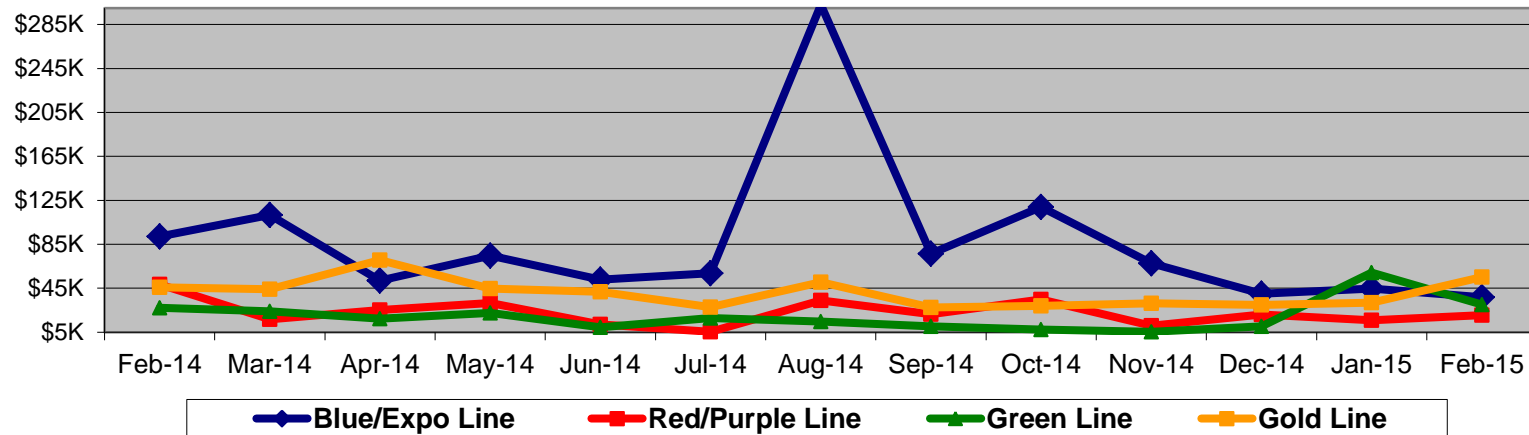


Notes: Labor hours contributed by Maint Specialist Leader, Rail Body/Paint Repair Leader, and Maint Specialist Temporary Leader

Vandalism & Graffiti Report

February 2014-2015

	Graffiti Costs													
	Feb-14	Mar-14	Apr-14	May-14	Jun-14	Jul-14	Aug-14	Sep-14	Oct-14	Nov-14	Dec-14	Jan-15	Feb-15	13-Month Period
Blue/Expo Line	\$92K	\$112K	\$52K	\$75K	\$53K	\$59K	\$303K	\$77K	\$119K	\$68K	\$40K	\$45K	\$37K	\$1129K
Red/Purple Line	\$49K	\$17K	\$25K	\$32K	\$12K	\$5K	\$34K	\$22K	\$35K	\$11K	\$21K	\$16K	\$21K	\$298K
Green Line	\$27K	\$24K	\$17K	\$22K	\$9K	\$18K	\$15K	\$10K	\$8K	\$5K	\$10K	\$59K	\$30K	\$257K
Gold Line	\$46K	\$44K	\$71K	\$45K	\$42K	\$28K	\$51K	\$28K	\$29K	\$31K	\$30K	\$32K	\$55K	\$530K
Totals:	\$214K	\$197K	\$165K	\$173K	\$116K	\$110K	\$402K	\$136K	\$190K	\$115K	\$102K	\$152K	\$143K	\$2,214K



February 2015 Vandalism & Graffiti - All Rail				
	Qty	Labor	Materials	Totals
Windows Replaced	97	\$ 32,886	\$ 34,059	\$ 66,945
Vandal Shields Replaced	372	\$ 10,931	\$ 6,210	\$ 17,141
Seats Cleaned	469	\$ 2,697	\$ -	\$ 2,697
Seats Inserts Replaced	162	\$ 5,104	\$ 6,129	\$ 11,233
Graffiti Removal - Other	886	\$ 11,322	\$ 1,000	\$ 12,322
Repainting Panels	291	\$ 24,607	\$ 7,899	\$ 32,506
Totals	2,277	\$ 87,547	\$ 55,297	\$ 142,844

Graffiti Pictures February 2015

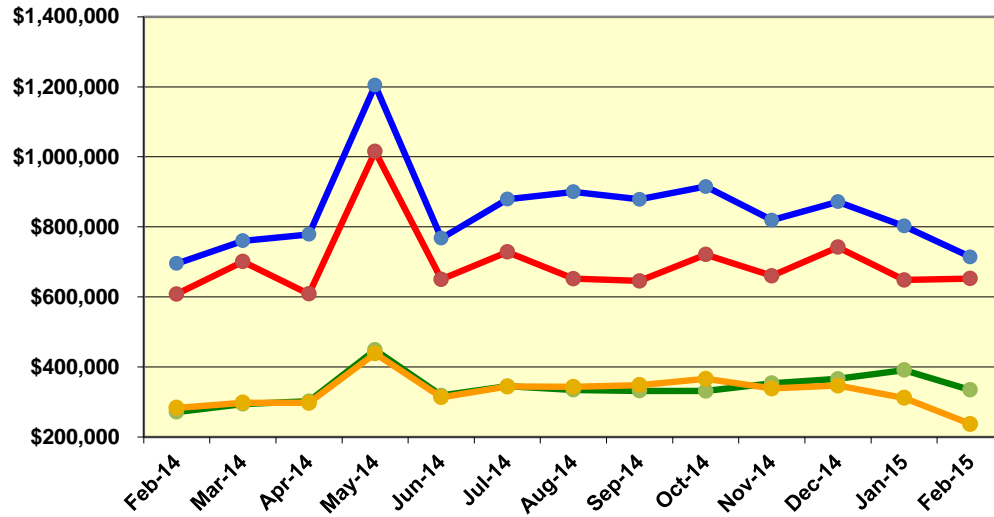
Blue Line



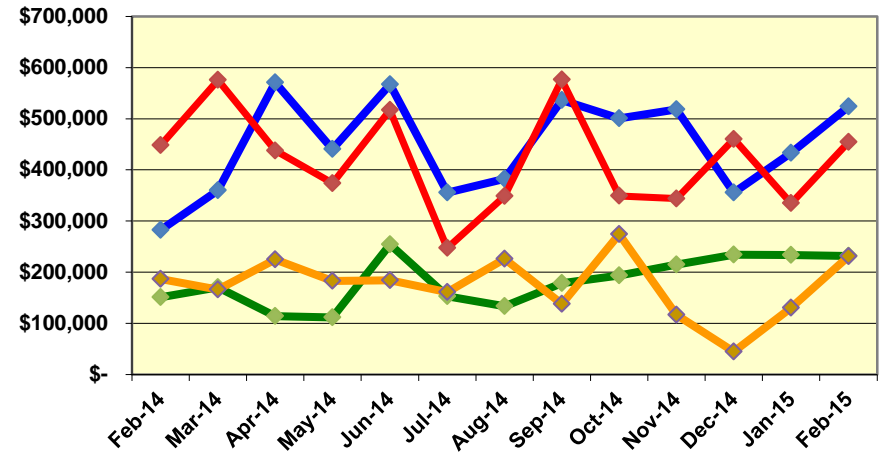
Labor and Material Costs

February 2014-2015

Labor Costs



Material Costs



Feb-14	Mar-14	Apr-14	May-14*	Jun-14	Jul-14	Aug-14	Sep-14	Oct-14	Nov-14	Dec-14	Jan-15	Feb-15
--------	--------	--------	---------	--------	--------	--------	--------	--------	--------	--------	--------	--------

Labor Costs

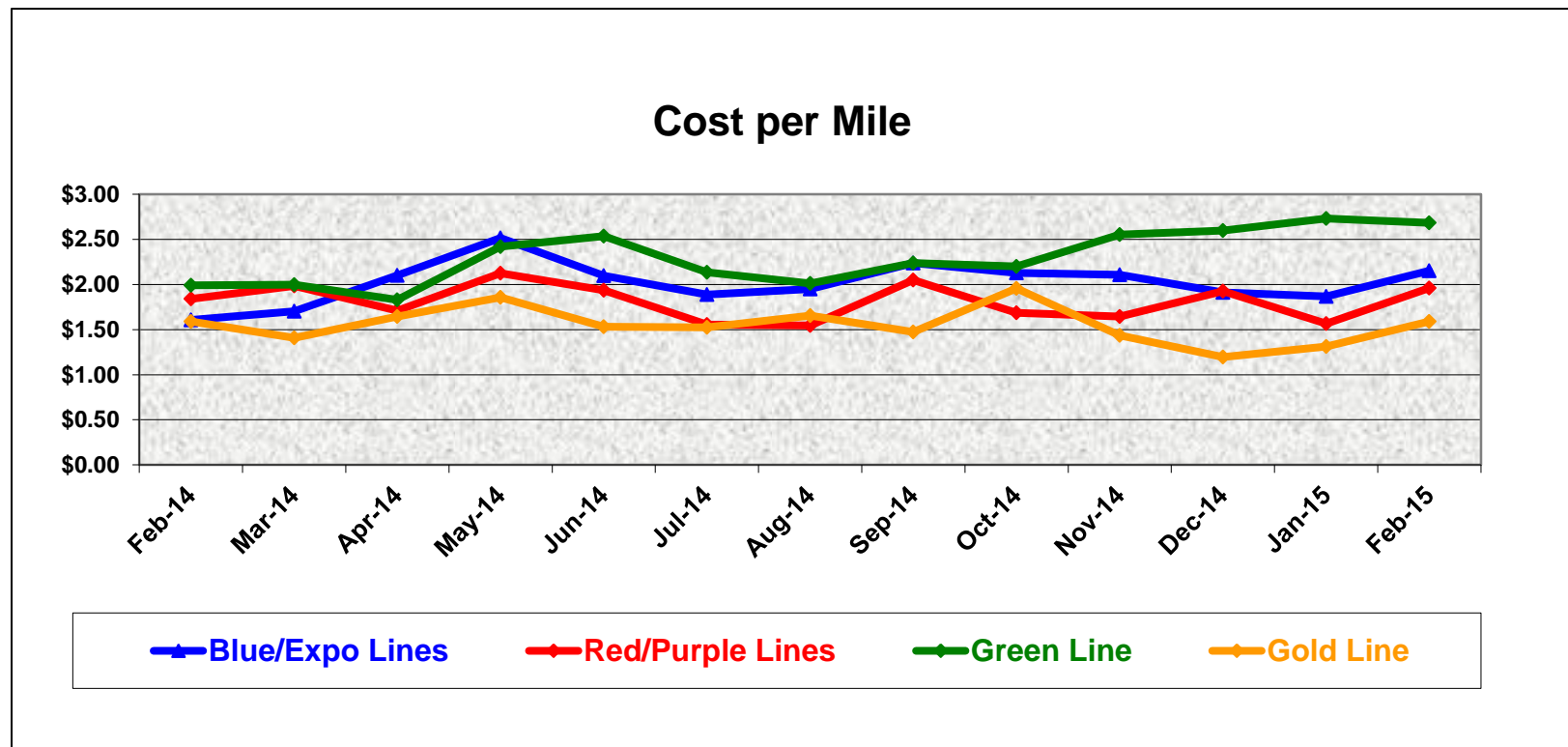
	Feb-14	Mar-14	Apr-14	May-14*	Jun-14	Jul-14	Aug-14	Sep-14	Oct-14	Nov-14	Dec-14	Jan-15	Feb-15
Blue/Expo Lines	\$ 695,394	\$ 760,511	\$ 778,469	\$ 1,204,234	\$ 767,717	\$ 879,339	\$ 900,043	\$ 878,598	\$ 915,432	\$ 819,497	\$ 871,682	\$ 802,256	\$ 714,349
Red/Purple Lines	\$ 608,097	\$ 701,156	\$ 608,816	\$ 1,015,092	\$ 650,226	\$ 728,383	\$ 652,202	\$ 645,981	\$ 721,060	\$ 660,321	\$ 741,908	\$ 648,538	\$ 652,406
Green Line	\$ 271,877	\$ 294,381	\$ 302,213	\$ 449,117	\$ 318,516	\$ 345,270	\$ 334,772	\$ 331,870	\$ 331,661	\$ 354,058	\$ 366,422	\$ 391,161	\$ 334,919
Gold Line	\$ 283,563	\$ 298,069	\$ 297,634	\$ 438,759	\$ 313,589	\$ 344,331	\$ 343,246	\$ 348,288	\$ 366,248	\$ 338,610	\$ 347,182	\$ 311,868	\$ 237,438
Totals	\$ 1,858,931	\$ 2,054,117	\$ 1,987,132	\$ 3,107,202	\$ 2,050,048	\$ 2,297,323	\$ 2,230,262	\$ 2,204,736	\$ 2,334,400	\$ 2,172,486	\$ 2,327,193	\$ 2,153,823	\$ 1,939,112

Material Costs

	Feb-14	Mar-14	Apr-14	May-14*	Jun-14	Jul-14	Aug-14	Sep-14	Oct-14	Nov-14	Dec-14	Jan-15	Feb-15
Blue/Expo Lines	\$ 282,466	\$ 359,845	\$ 570,775	\$ 440,576	\$ 567,257	\$ 355,405	\$ 382,184	\$ 536,100	\$ 500,390	\$ 518,334	\$ 355,729	\$ 433,347	\$ 524,157
Red/Purple Lines	\$ 448,225	\$ 575,495	\$ 437,612	\$ 373,815	\$ 516,934	\$ 247,048	\$ 348,370	\$ 576,230	\$ 349,031	\$ 343,936	\$ 460,076	\$ 334,623	\$ 454,326
Green Line	\$ 150,881	\$ 170,250	\$ 113,979	\$ 111,344	\$ 254,264	\$ 153,001	\$ 133,386	\$ 178,206	\$ 193,176	\$ 214,902	\$ 234,118	\$ 233,318	\$ 231,562
Gold Line	\$ 186,640	\$ 166,216	\$ 224,430	\$ 183,115	\$ 183,869	\$ 160,751	\$ 225,818	\$ 137,883	\$ 274,059	\$ 116,179	\$ 44,498	\$ 130,036	\$ 230,896
Totals	\$ 1,068,212	\$ 1,271,807	\$ 1,346,796	\$ 1,108,849	\$ 1,522,323	\$ 916,204	\$ 1,089,759	\$ 1,428,418	\$ 1,316,657	\$ 1,193,351	\$ 1,094,420	\$ 1,131,324	\$ 1,440,941

Cost Per Mile February 2014-2015

Cost per mile:	Feb-14	Mar-14	Apr-14	May-14	Jun-14	Jul-14	Aug-14	Sep-14	Oct-14	Nov-14	Dec-14	Jan-15	Feb-15
Blue/Expo Lines	\$1.61	\$1.70	\$2.10	\$2.52	\$2.10	\$1.89	\$1.95	\$2.24	\$2.13	\$2.11	\$1.91	\$1.87	\$2.15
Red/Purple Lines	\$1.84	\$1.98	\$1.71	\$2.13	\$1.93	\$1.55	\$1.54	\$2.05	\$1.68	\$1.64	\$1.92	\$1.57	\$1.96
Green Line	\$1.99	\$2.00	\$1.83	\$2.42	\$2.54	\$2.14	\$2.01	\$2.24	\$2.20	\$2.55	\$2.60	\$2.73	\$2.68
Gold Line	\$1.59	\$1.41	\$1.64	\$1.86	\$1.53	\$1.53	\$1.65	\$1.47	\$1.96	\$1.44	\$1.19	\$1.31	\$1.59



ATU Absences vs. Overtime

February 2015

ABSENCE TYPE and HOURS	3941 & 3947 Blue & Expo	3942 Red	3943 Green	3944 Gold	Total
AWP-ABSENT W/O PERMISSION	-	-	136	-	136
BER-BEREAVEMENT	-	80	-	-	80
CTO-COMPENSATORY TIME OFF	414	569	250	156	1,388
CUT-EMPLOYEE LEAVES EARLY	1	-	-	2	3
DSL-DISABILITY LEAVE/LONG	800	160	264	8	1,232
EFH-EMG. FLOAT HOL.	16	16	-	8	40
ETO-EXCUSED TIME OFF	78	50	16	43	187
FMI-FAM IND INJURY	96	160	152	-	408
FML-FAMILY CARE LEAVE	408	633	99	64	1,204
FMS-FAMILY LEAVE SICK	72	193	40	-	305
HLF-HOLIDAY FLOATING	488	184	80	72	824
II-INDUSTRIAL INJURY	-	-	24	-	24
IIR-INDUS INJURY -REOCCUR.	-	160	-	-	160
LC1-LABOR CODE 233	343	276	72	192	883
LTI-OCCPIL/LONGTRM INJ LEAVE	304	-	-	-	304
RTO-REQUESTED TIME OFF-NO PAY	58	-	-	-	58
SCK-SICK PAY	105	144	64	192	504
SCW-SICK WITHOUT PAY	56	56	160	-	272
SUS-DISCIPLINARY SUSPENSION	16	-	-	61	77
TAR-TARDY	3	0	2	-	5
VAC-VACATION	696	966	308	348	2,317
Total Absence Hours	3,952	3,646	1,667	1,145	10,410
ATU Number of Work Force (budget)	125	104	46	48	323
Full Work Force hours/month*	21,663	18,023	7,972	8,318	55,976
Absence as a % of Work Force	18%	20%	21%	14%	19%

OVERTIME TYPE and HOURS	3941 & 3947 Blue & Expo	3942 Red	3943 Green	3944 Gold	Total
CTB-COMPENSATORY TIME TO BANK	182	190	92	64	529
OTP-PREM OVERTIME	4,915	4,013	2,310	1,151	12,389
WLO-Worked Lunch Overtime	160	200	79	39	477
Total Overtime Hours	5,258	4,404	2,481	1,254	13,396
Overtime as a % of Work Force	24%	24%	31%	15%	24%

*Estimated number of work force hours, using budgeted FTE's for calculation