



# **Rail Fleet Services Monthly Report June 2015**



**Metro**

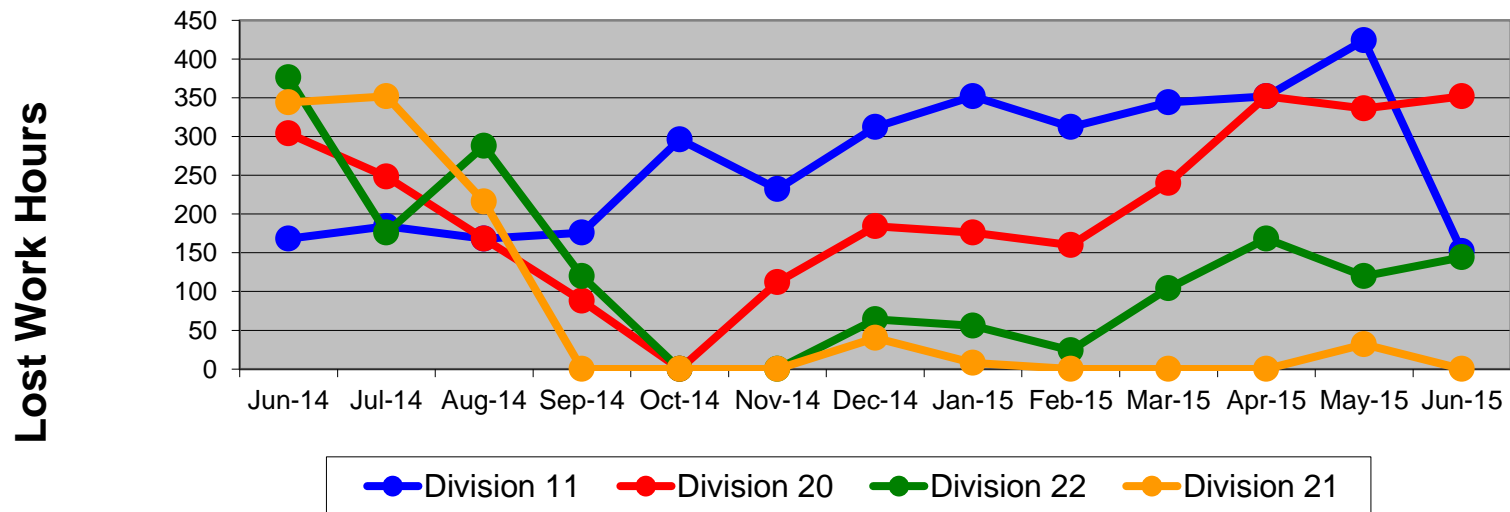
# Table of Contents

|   |  |      |    |
|---|--|------|----|
| • | Safety   |      |    |
|   | - Industrial Injuries                          | Page | 3  |
|   | - Rail Vehicle Accidents & Major Incidents     | Page | 4  |
| • | Customer Service                               |      |    |
|   | - Service Delivery – AM/PM Pull-Outs           | Page | 5  |
|   | - Vehicle Utilization – Blue Line & Green Line | Page | 6  |
|   | - Vehicle Utilization – Red Line & Gold Line   | Page | 7  |
|   | - All Train Delay Incidents                    | Page | 8  |
|   | - Mean Miles Between Failures (Major)          | Page | 9  |
|   | - Mileage Between Data Range (by month)        | Page | 10 |
| • | Business Processes                             |      |    |
|   | - Top Incident Categories                      | Page | 11 |
|   | - Major Incidents                              | Page | 12 |
|   | - Preventive Maintenance Compliance            | Page | 13 |
|   | - RFS Wrench Turning                           | Page | 14 |
| • | Finance  |      |    |
|   | - Vandalism & Graffiti Costs                   | Page | 15 |
|   | - Graffiti Pictures                            | Page | 16 |
|   | - Labor & Material Costs                       | Page | 17 |
|   | - Cost per mile                                | Page | 18 |
|   | - Absence vs. Overtime                         | Page | 19 |
| • | Growth   |      |    |
|   | - RFS Instruction Department Activities        | Page | 20 |

# Industrial Injuries – Lost Work Hours June 2014-2015

|             | Jun-14 | Jul-14 | Aug-14 | Sep-14 | Oct-14 | Nov-14 | Dec-14 | Jan-15 | Feb-15 | Mar-15 | Apr-15 | May-15 | Jun-15 | 13-Month<br>Period |
|-------------|--------|--------|--------|--------|--------|--------|--------|--------|--------|--------|--------|--------|--------|--------------------|
| Division 11 | 168    | 184    | 168    | 176    | 296    | 232    | 312    | 352    | 312    | 344    | 352    | 424    | 152    | 3,472              |
| Division 20 | 304    | 248    | 168    | 88     | 0      | 112    | 184    | 176    | 160    | 240    | 352    | 336    | 352    | 2,720              |
| Division 22 | 376    | 176    | 288    | 120    | 0      | 0      | 64     | 56     | 24     | 104    | 168    | 120    | 144    | 1,640              |
| Division 21 | 344    | 352    | 216    | 0      | 0      | 0      | 40     | 8      | 0      | 0      | 0      | 32     | 0      | 992                |
| Totals      | 1,192  | 960    | 840    | 384    | 296    | 344    | 600    | 592    | 496    | 688    | 872    | 912    | 648    | 8,824              |

**Industrial Injuries (lost work hours)**



# Rail Vehicle Accidents & Major Incidents

## June 2014-2015

| Repair Costs    | Jun-14          | Jul-14          | Aug-14         | Sep-14          | Oct-14          | Nov-14         | Dec-14         | Jan-15         | Feb-15          | Mar-15          | Apr-15          | May-15         | Jun-15         | 13-Month Period  |
|-----------------|-----------------|-----------------|----------------|-----------------|-----------------|----------------|----------------|----------------|-----------------|-----------------|-----------------|----------------|----------------|------------------|
| Blue/Expo Line  | \$9,964         | \$1,528         | \$207          | \$42,690        | \$12,945        | \$5,762        | \$3,463        | \$9,301        | \$17,834        | \$17,322        | \$12,056        | \$1,655        | \$4,811        | \$139,538        |
| Red/Purple Line | \$0             | \$0             | \$0            | \$0             | \$4,194         | \$0            | \$0            | \$0            | \$0             | \$0             | \$0             | \$0            | \$0            | \$4,194          |
| Green Line      | \$0             | \$0             | \$0            | \$0             | \$267           | \$0            | \$0            | \$0            | \$0             | \$0             | \$0             | \$0            | \$0            | \$267            |
| Gold Line       | \$5,860         | \$50,059        | \$1,669        | \$0             | \$0             | \$0            | \$5,664        | \$0            | \$315           | \$0             | \$0             | \$4,833        | \$1,494        | \$69,894         |
| <b>Totals</b>   | <b>\$15,824</b> | <b>\$51,587</b> | <b>\$1,876</b> | <b>\$42,690</b> | <b>\$17,406</b> | <b>\$5,762</b> | <b>\$9,127</b> | <b>\$9,301</b> | <b>\$18,149</b> | <b>\$17,322</b> | <b>\$12,056</b> | <b>\$6,488</b> | <b>\$6,305</b> | <b>\$213,893</b> |

| Rail Vehicle Accident Costs - June 2015   |            |                   |  |                 |
|---|------------|-------------------|--|-----------------|
| Date  | Incident # | Problem Code      | Incident Description   | Repair Cost     |
| <b>Metro Blue/Expo Line</b>   |            |                   |  |                 |
| 6/11/15   | 2604691    | Train vs. Vehicle | A 10-73 was reported. Train 103 at the intersection of Washington Blvd. and Los Angeles Street, Track 2, Southbound. | \$ 1,634        |
| 6/25/15   | 2609607    | Train vs. Vehicle | A 10-73 was reported. Train 117 San Pedro Station, Track 2, Southbound.  | \$ 766          |
| 6/30/15   | 2611461    | Train vs. Vehicle | A 10-73 was reported. Auto attempted "U" turn into path of train at Washington and Trinity, Northbound.              | \$ 2,411        |
| <b>Total</b>  |            |                   |  | <b>\$ 4,811</b> |
| <b>Metro Gold Line</b>  |            |                   |  |                 |
| 6/3/15  | 2601508    | Train vs. Vehicle | A 10-73 was reported, South of Pico Aliso Station.   | \$ 810          |
| 6/13/15   | 2605278    | Train vs. Vehicle | A 10-73 was reported. Train 411 Avenue 52, Track 2, Southbound.  | \$ 684          |
| <b>Total</b>  |            |                   |  | <b>\$ 1,494</b> |
| <b>Grand Total</b>  |            |                   |  | <b>\$ 6,305</b> |
| (10-71) = Train vs. Object, (10-72) = Train vs. Pedestrian, (10-73) = Train vs. Vehicle (10-74) = Train vs. MTA Vehicle, (10-75) = Derailment |            |                   |  |                 |

# Service Delivery June 2015

## June 2015 - Service Delivery

### Blue/Expo Line Fleet Size: 92\*

| <u>Pull Out</u>         | <u>Vehicles Required</u> | <u>Average Available</u> | <u>% Up (Down)</u> |
|-------------------------|--------------------------|--------------------------|--------------------|
| Weekday:                | 78                       | 76                       | 97%                |
| Weekend:                | 60                       | 62                       | 103%               |
| Late Pullouts: 0        |                          |                          |                    |
| <b>Monthly Mileage:</b> | <b>615,249</b>           |                          |                    |

### Red/Purple Line Fleet Size: 104

| <u>Pull Out</u>         | <u>Vehicles Required</u> | <u>Average Available</u> | <u>% Up (Down)</u> |
|-------------------------|--------------------------|--------------------------|--------------------|
| Weekday:                | 74                       | 82                       | 111%               |
| Weekend:                | 54                       | 70                       | 130%               |
| Late Pullouts: 0        |                          |                          |                    |
| <b>Monthly Mileage:</b> | <b>603,734</b>           |                          |                    |

### Green Line Fleet Size: 29

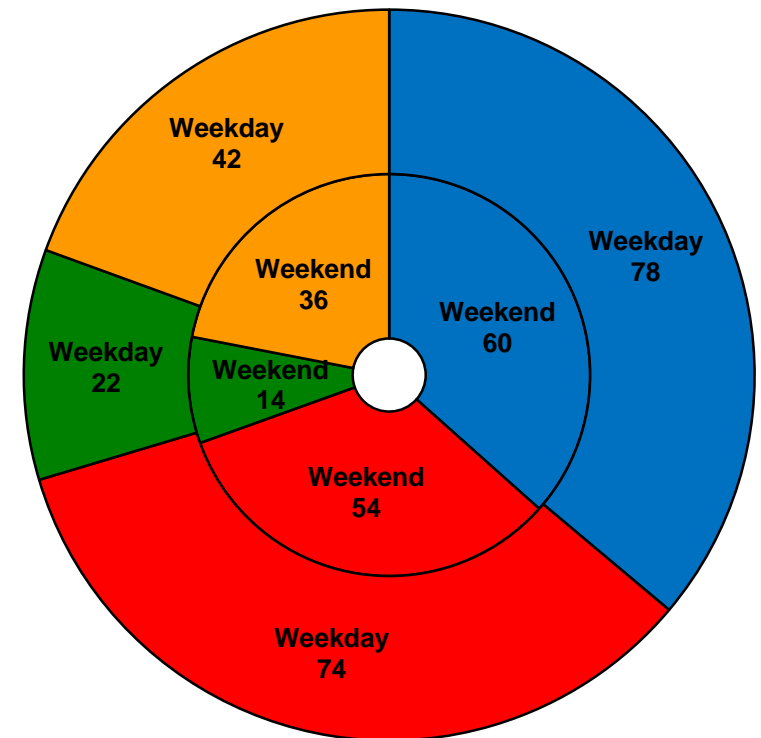
| <u>Pull Out</u>         | <u>Vehicles Required</u> | <u>Average Available</u> | <u>% Up (Down)</u> |
|-------------------------|--------------------------|--------------------------|--------------------|
| Weekday:                | 22                       | 22                       | 100%               |
| Weekend:                | 14                       | 15                       | 107%               |
| Late Pullouts: 0        |                          |                          |                    |
| <b>Monthly Mileage:</b> | <b>227,721</b>           |                          |                    |

### Gold Line Fleet Size: 50\*\*

| <u>Pull Out</u>         | <u>Vehicles Required</u> | <u>Average Available</u> | <u>% Up (Down)</u> |
|-------------------------|--------------------------|--------------------------|--------------------|
| Weekday:                | 42                       | 42                       | 100%               |
| Weekend:                | 36                       | 38                       | 106%               |
| Late Pullouts: 0        |                          |                          |                    |
| <b>Monthly Mileage:</b> | <b>314,507</b>           |                          |                    |

\*Two cars are out at Expo II for Acceptance Testing.

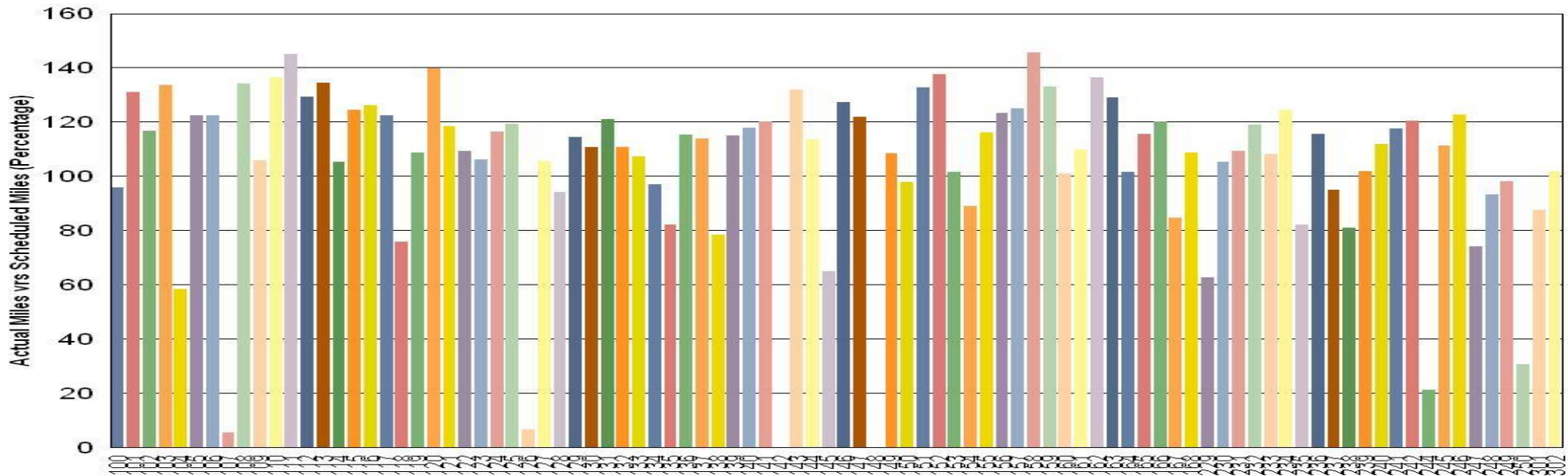
\*\*Two cars are out on the Foothill Gold Line extension to Azusa for testing.



# Vehicle Utilization

## June 2015

### Metro Blue/Expo Line (92 Cars)



**Blue/Expo Line:** The following cars were out of service due to:

**Car # 107** Being used at Expo II for Acceptance Testing

**Car # 126** Being used at Expo II for Acceptance Testing

**Car # 142** Accident Repairs

**Car # 148** Repairs and Training Vehicle

**Car # 244** 90K Inspection and Training Vehicle

**Car # 250** Repairs and Training Vehicle

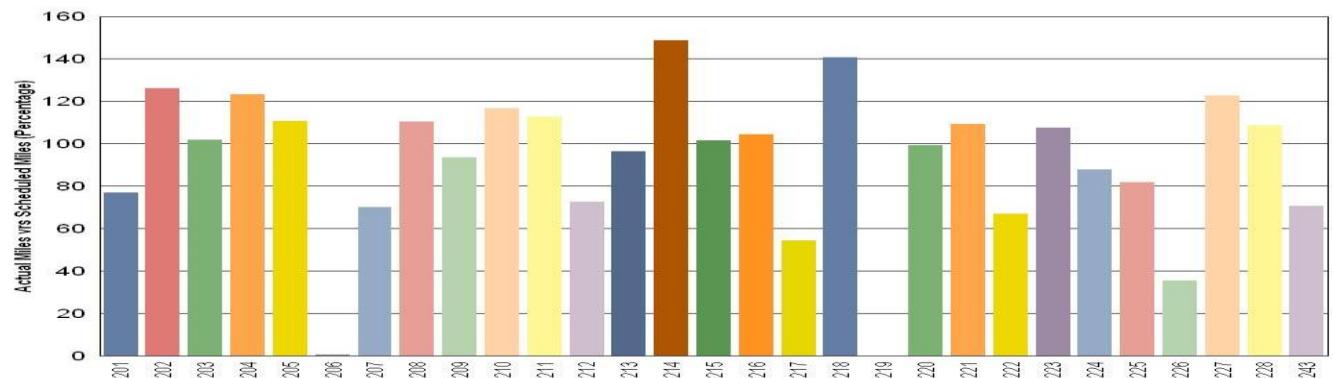
**Green Line:** The following cars were out of service due to:

**Car # 206** Awaiting Parts (Aux Inverter NG)

**Car # 219** Paint Car sent to Blue Line (returned 7/03/15)

**Car # 226** 90K Inspection

### Metro Green Line (29 Cars)



*Note: Percentage includes an average 4% mileage deduction for yard mileage and vehicle testing.*

# Vehicle Utilization

## June 2015

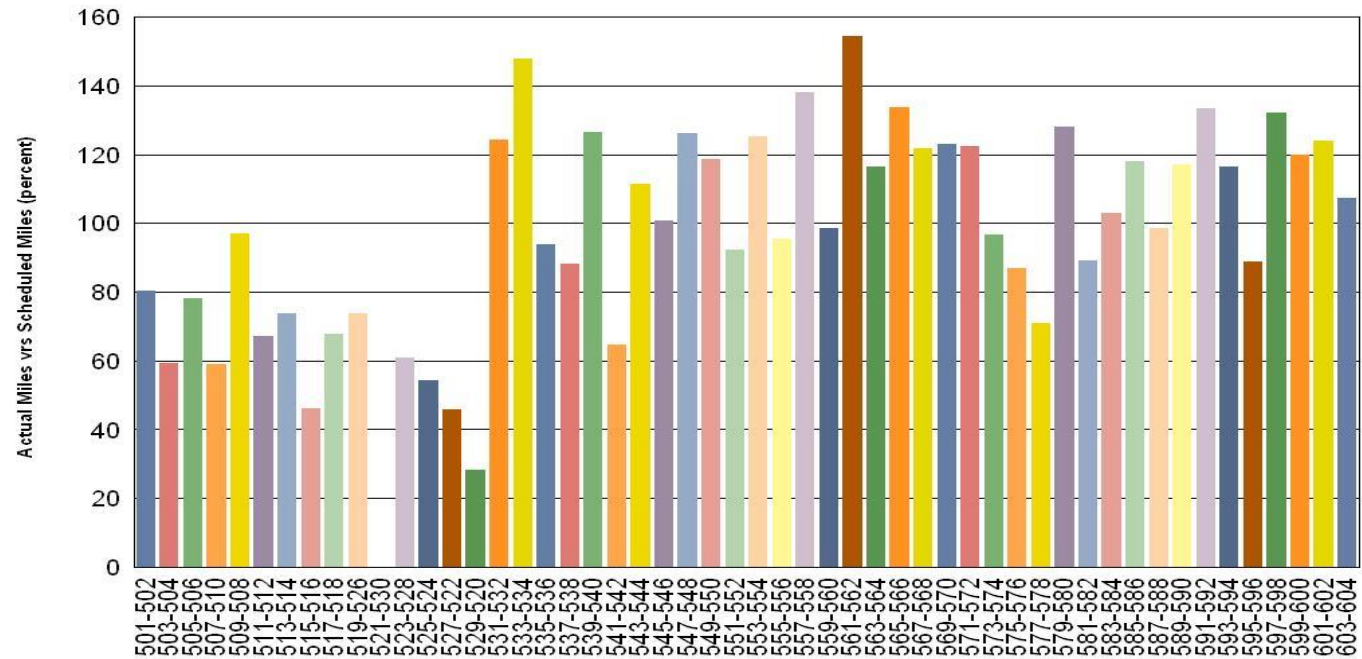
### Red/Purple Line:

The following cars were out of service due to:

**Car # 521-530** Traction Motor

**Car # 529-520** Traction Motor, currently back in service.

### Metro Red/Purple Line (104 Cars)



### Gold Line:

The following cars were out of service due to:

**Car # 704** Assigned to Foothill Extension Testing

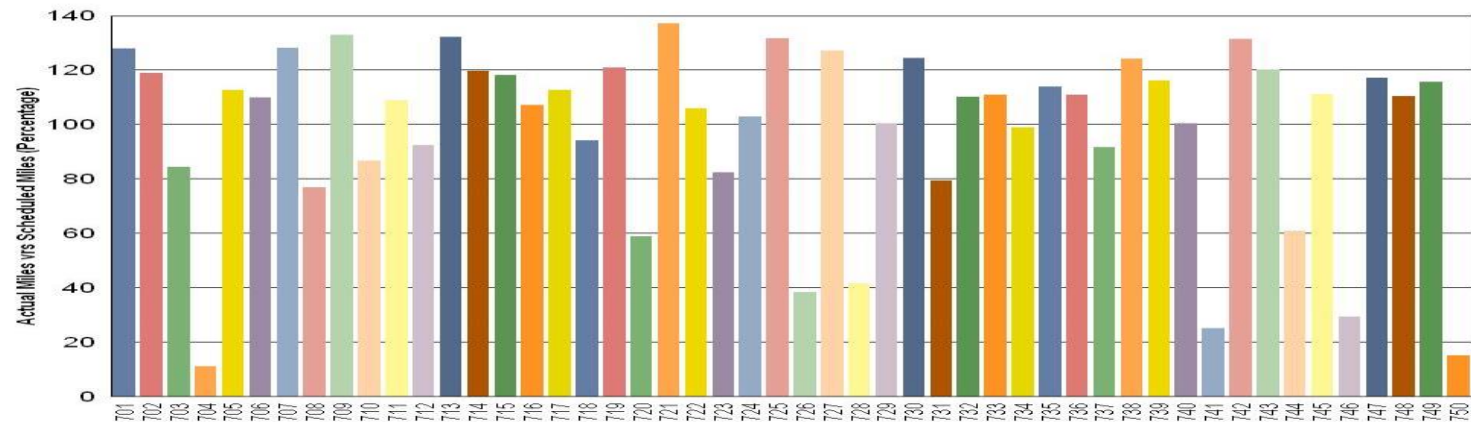
**Car # 726** Battery Overheating Problem

**Car # 741** 120,000-mile Preventive Maintenance Inspection

**Car # 746** Assigned to Foothill Extension Testing

**Car # 750** Auxiliary Inverter Problem

### Metro Gold Line (50 Cars)



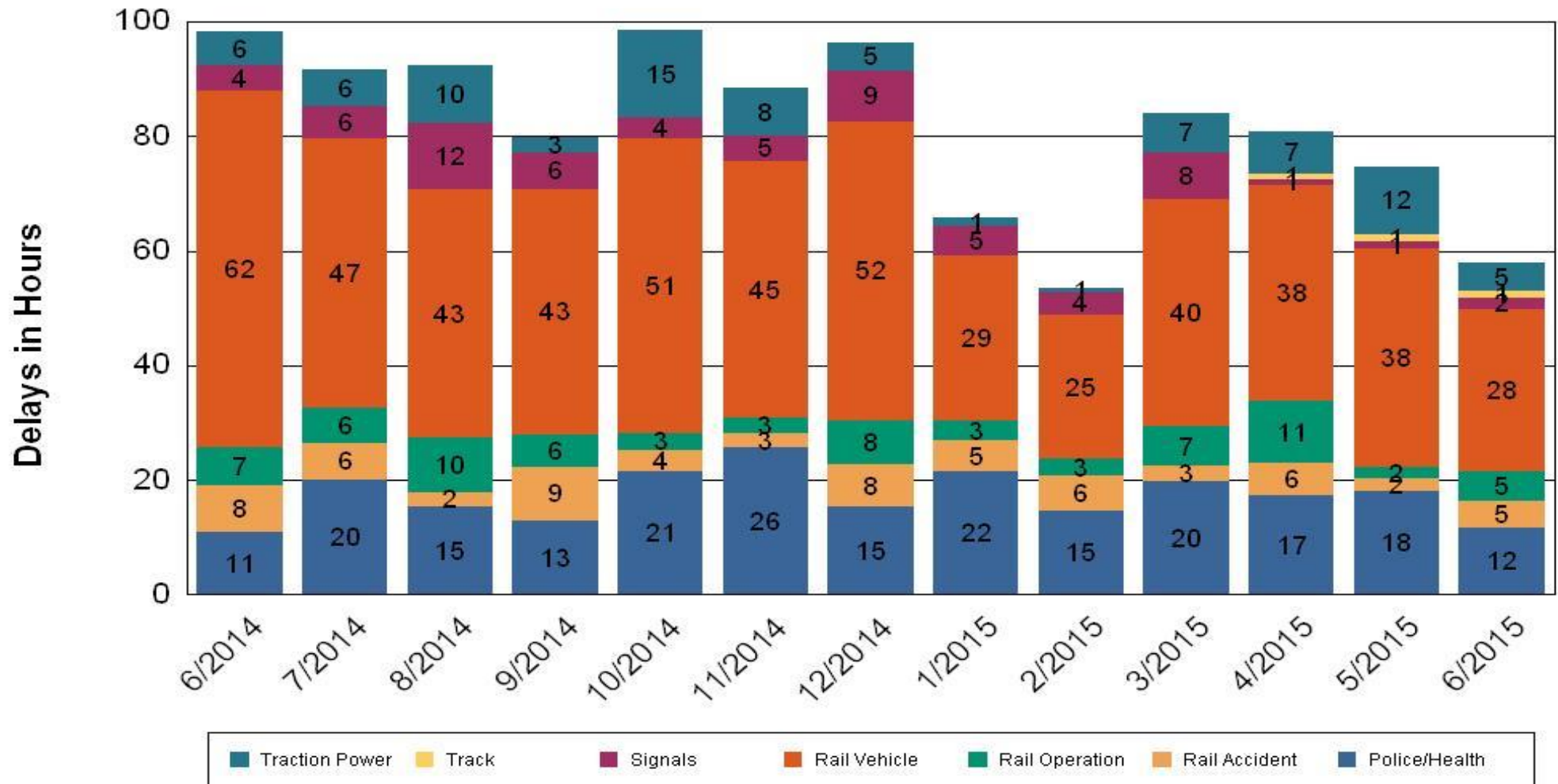
•Percentage includes an average 4% mileage deduction for yard mileage and vehicle testing.



# All Train Delays (Hours) June 2014-2015

## All Train Delays

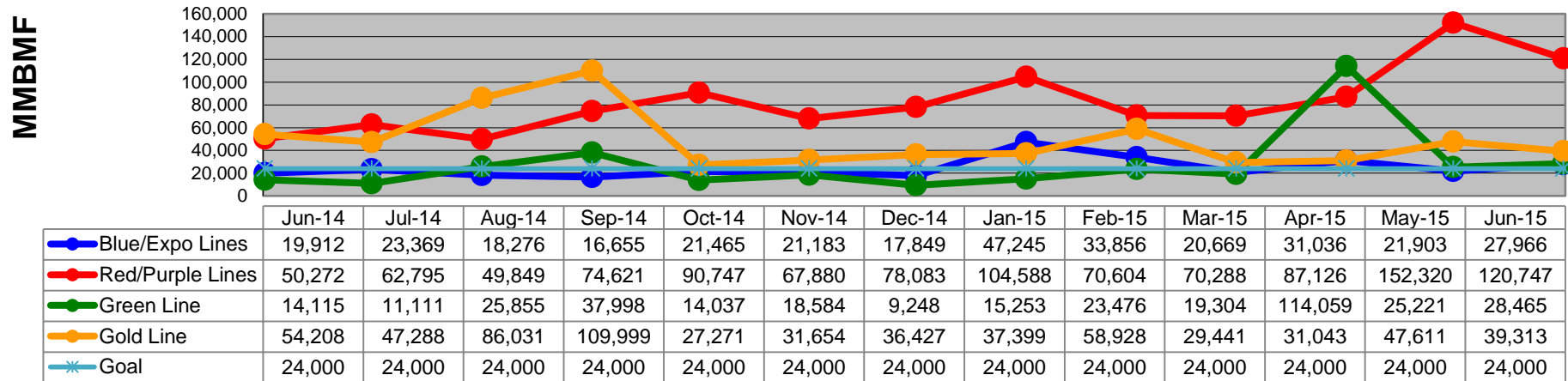
Totals Include the delay to all trains involved (not just the primary incident)



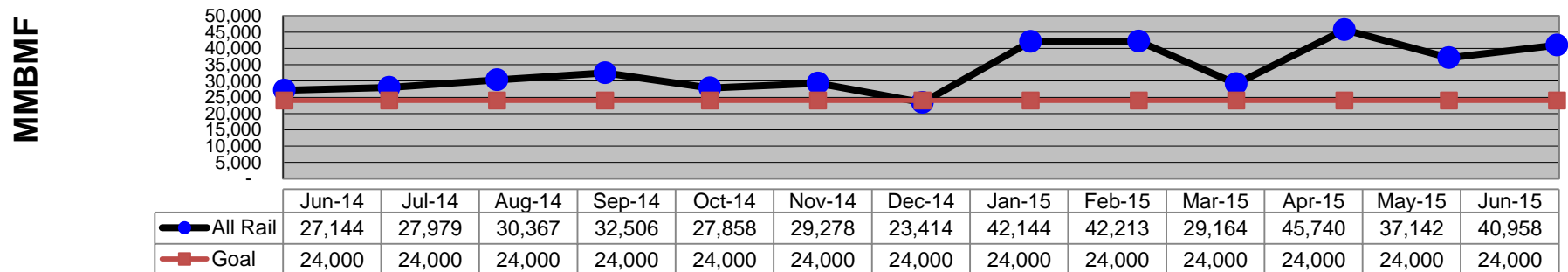


# Mean Miles Between Failures (Major) June 2014-2015

## Mean Miles Between Major Failures (by line)

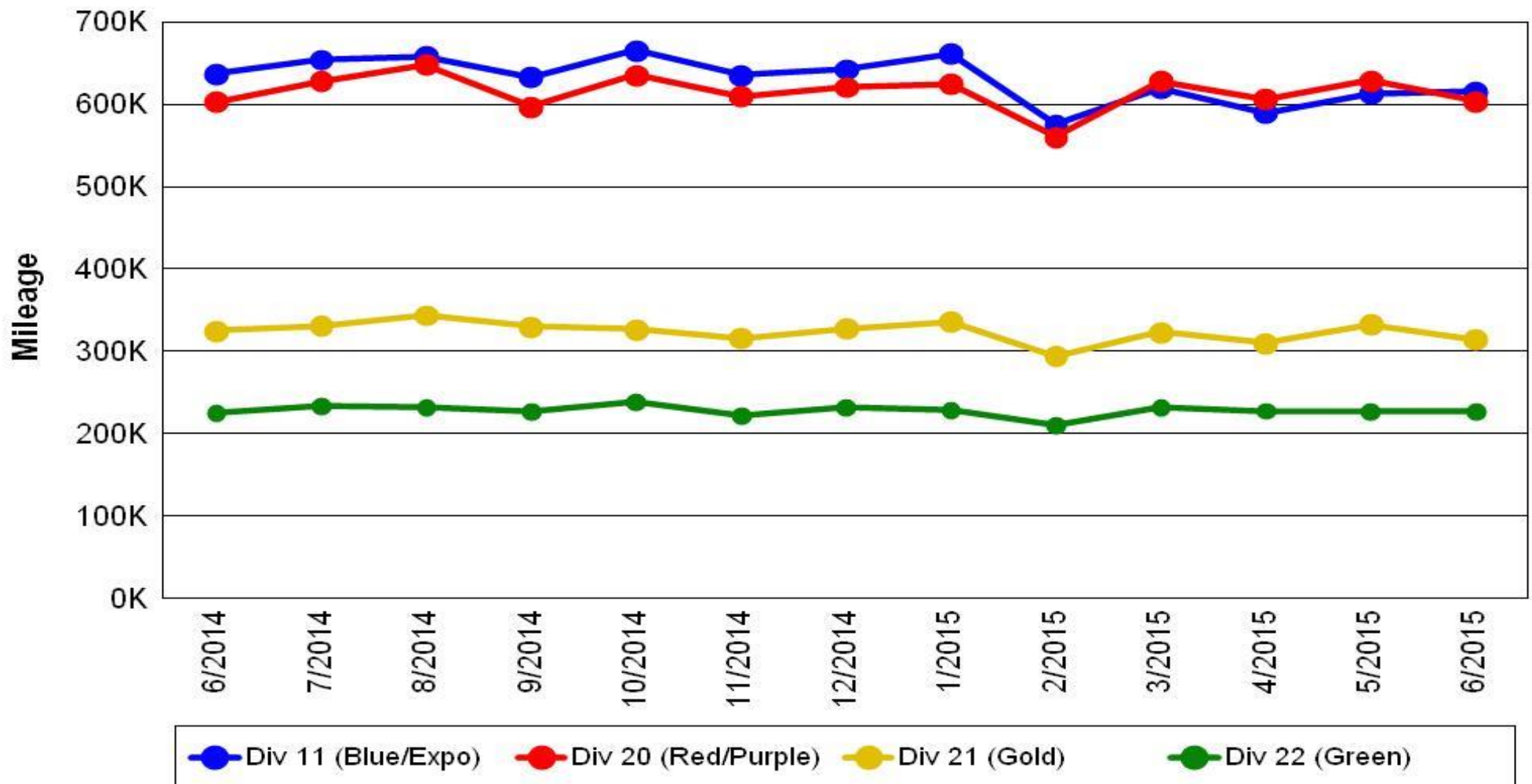


## Mean Miles Between Major Failures (all)



# Mileage Between Data Range (by month) June 2014-2015

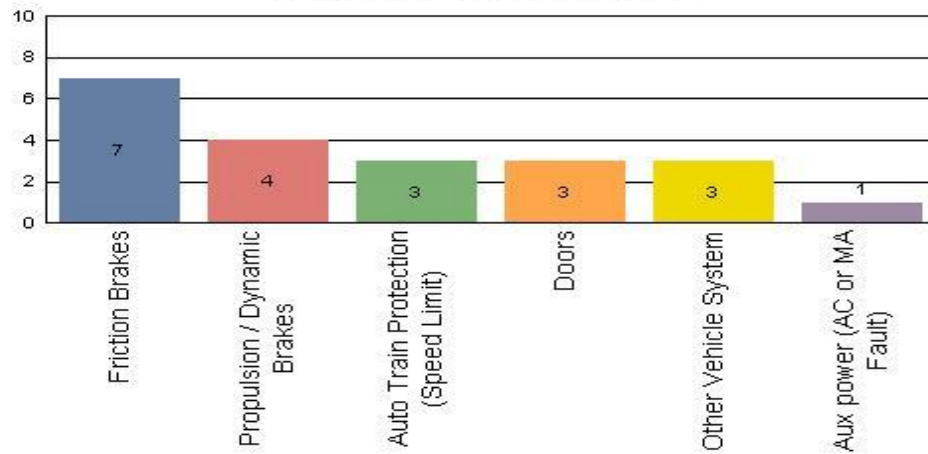
## Rail Division Monthly Mileage



# Top Incident Categories June 2015

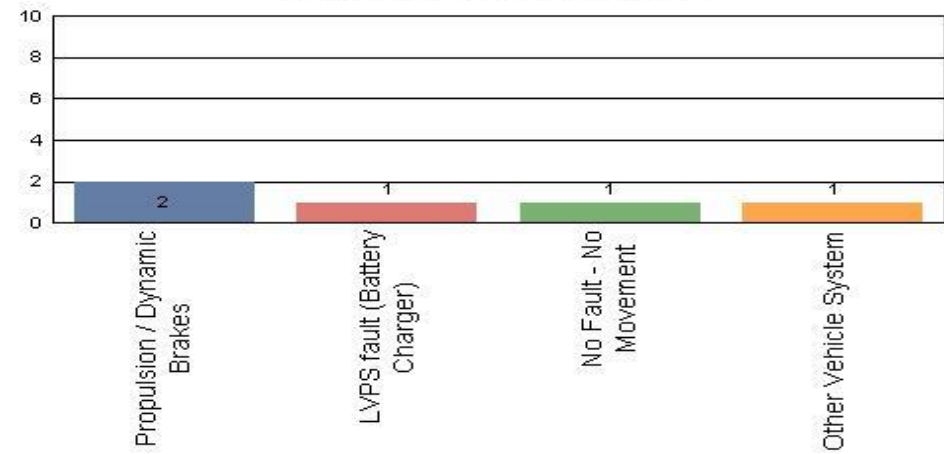
## Metro Blue/Expo Line

### Top Incident Categories



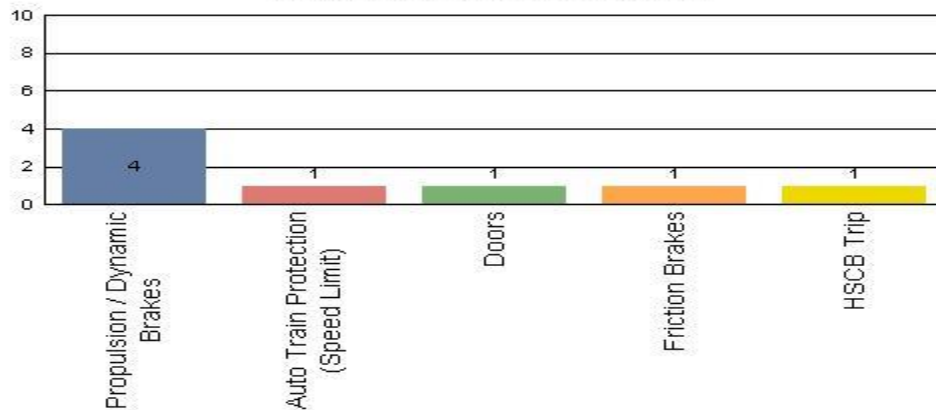
## Metro Red/Purple Line

### Top Incident Categories



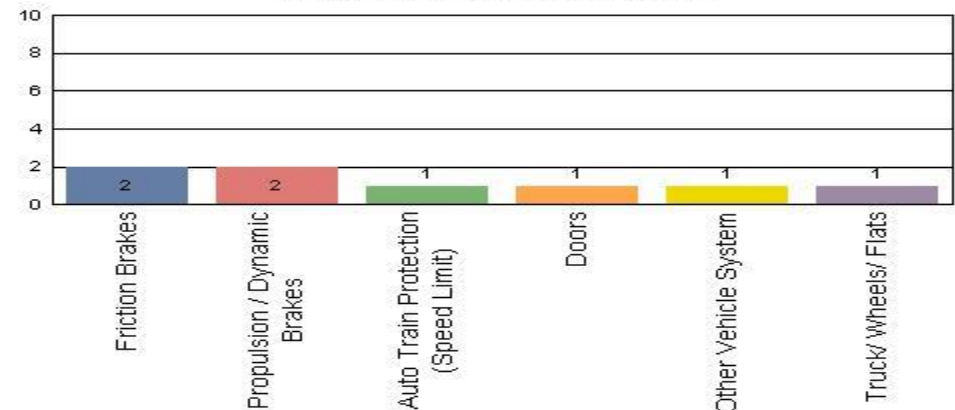
## Metro Green Line

### Top Incident Categories



## Metro Gold Line

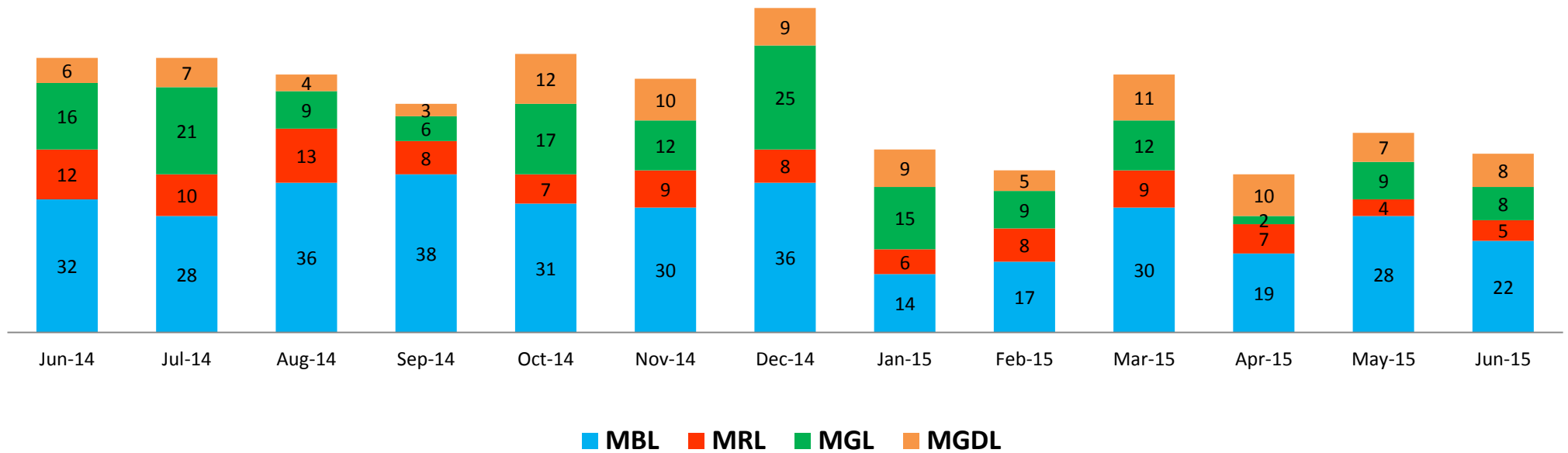
### Top Incident Categories



# Major Incidents

## June 2014-2015

### Numbers of Major System Failures (by Line)



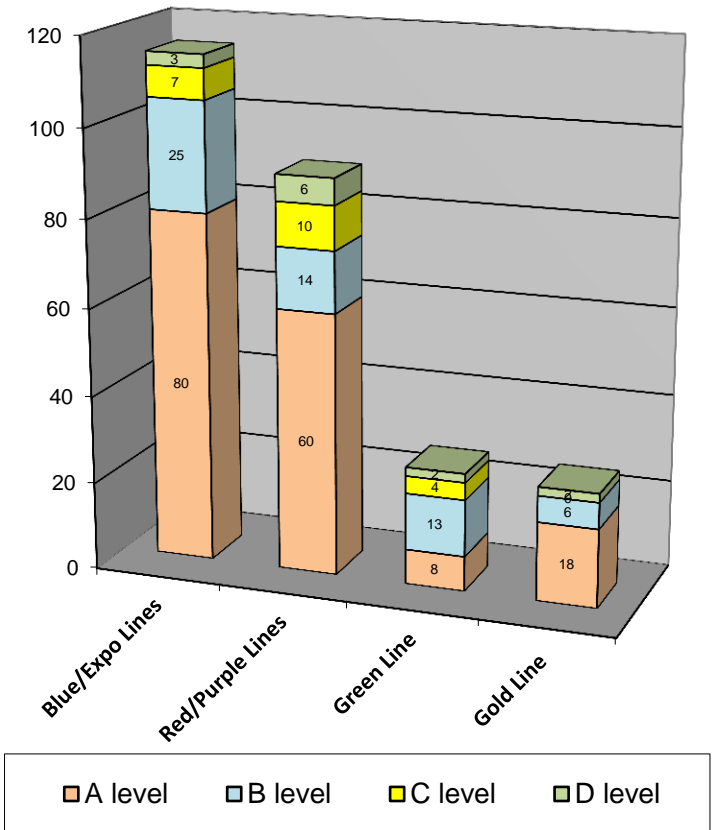
# Preventive Maintenance Compliance

## June 2014-2015

| PM Compliance    | Jun-14 | Jul-14 | Aug-14 | Sep-14 | Oct-14 | Nov-14 | Dec-14 | Jan-15 | Feb-15 | Mar-15 | Apr-15 | May-15 | Jun-15 |
|------------------|--------|--------|--------|--------|--------|--------|--------|--------|--------|--------|--------|--------|--------|
| Blue/Expo Lines  | 100%   | 100%   | 100%   | 100%   | 100%   | 100%   | 100%   | 100%   | 100%   | 100%   | 100%   | 100%   | 100%   |
| Red/Purple Lines | 100%   | 100%   | 100%   | 100%   | 100%   | 100%   | 100%   | 100%   | 100%   | 100%   | 97%    | 100%   | 100%   |
| Green Line       | 97%    | 100%   | 100%   | 100%   | 100%   | 97%    | 100%   | 100%   | 100%   | 100%   | 100%   | 100%   | 100%   |
| Gold Line        | 100%   | 100%   | 100%   | 100%   | 100%   | 100%   | 100%   | 100%   | 100%   | 100%   | 100%   | 100%   | 96%    |

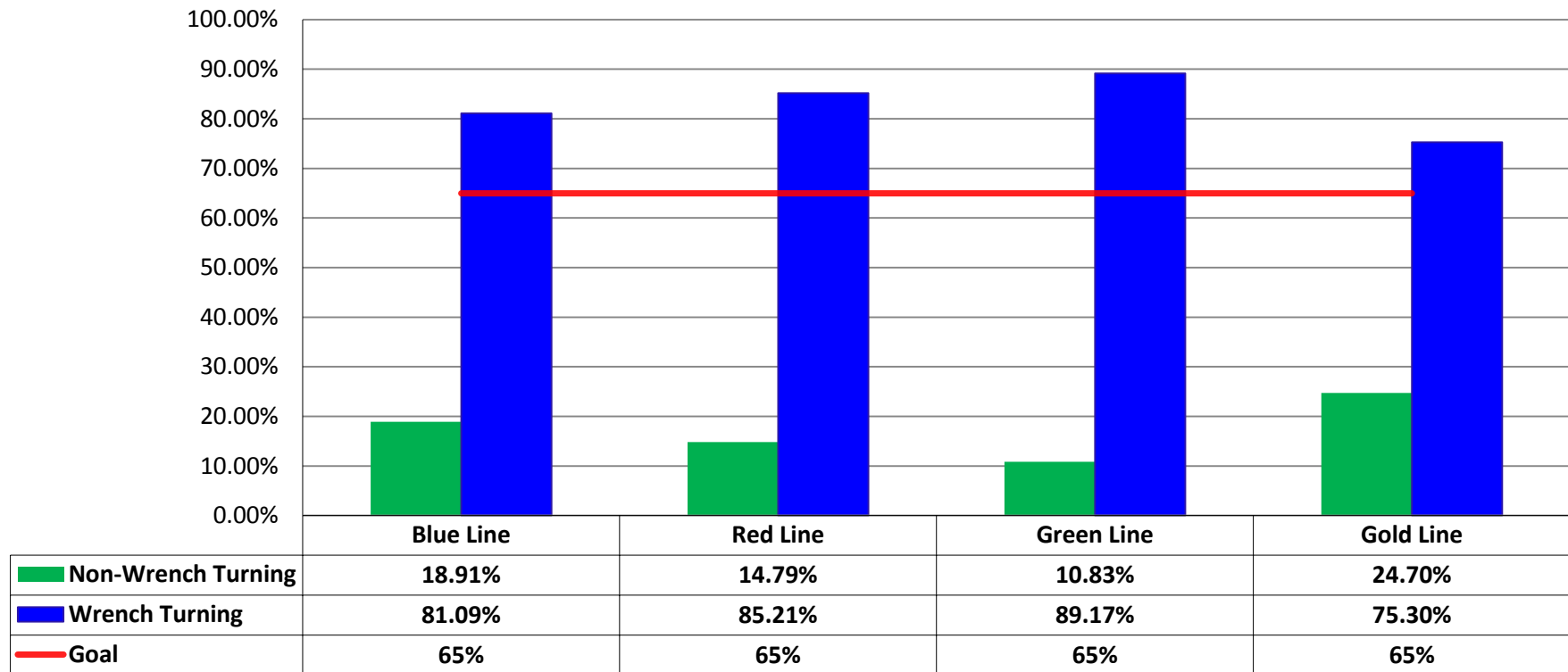
| Number of Preventive Maintenance Inspections - June 2015 |         |         |         |         |        |
|--|---------|---------|---------|---------|--------|
| Line   | A level | B level | C level | D level | Totals |
| Blue/Expo Lines  | 80      | 25      | 7       | 3       | 115    |
| Red/Purple Lines   | 60      | 14      | 10      | 6       | 90     |
| Green Line   | 8       | 13      | 4       | 2       | 27     |
| Gold Line  | 18      | 6       | 0       | 2       | 26     |
| Totals:  | 166     | 58      | 21      | 13      | 258    |

| Explanation of PM Inspection levels |            | Miles   |         |         |         |
|-------------------------------------|------------|---------|---------|---------|---------|
| Line                                | Type       | A level | B level | C level | D level |
| Blue/Expo Lines                     | P865/P2020 | 5,000   | 15,000  | 30,000  | 60,000  |
| Blue/Expo Lines                     | P2000      | 7,500   | 22,500  | 45,000  | 90,000  |
| Red/Purple Lines                    | A650       | 7,500   | 22,500  | 45,000  | 90,000  |
| Green Line                          | P2000      | 7,500   | 22,500  | 45,000  | 90,000  |
| Gold Line                           | P2550      | 10,000  | 30,000  | 60,000  | 120,000 |



# RFS Wrench Turning June 2015

## RFS - Wrench Turning June 2015



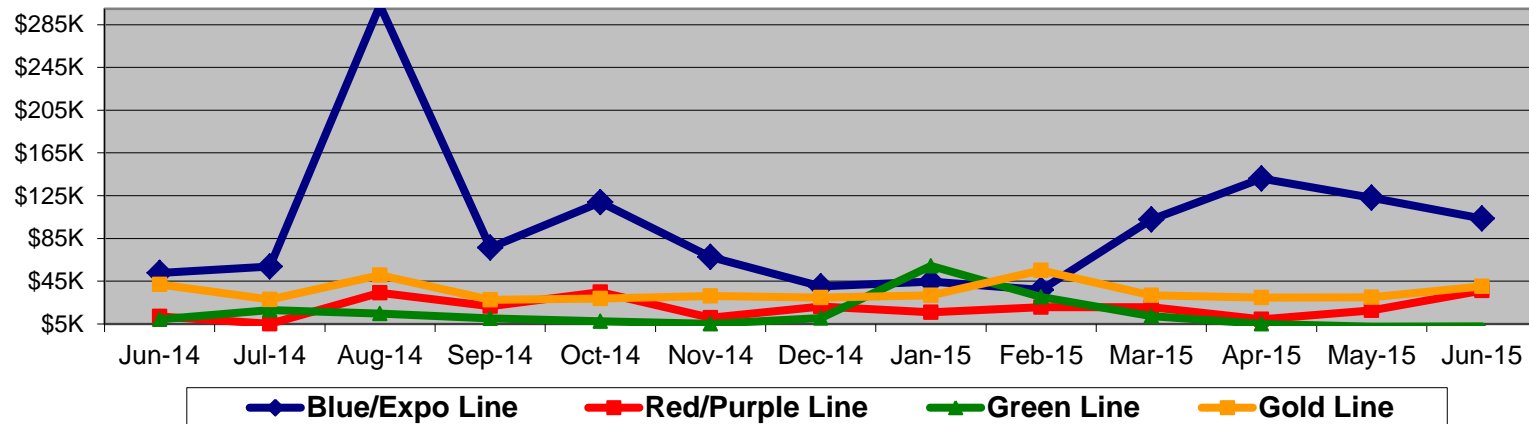
**Notes:** Labor hours contributed by Maint Specialist Leader, Rail Body/Paint Repair Leader, and Maint Specialist Temporary Leader

# Vandalism & Graffiti Report

## June 2014-2015

Graffiti Costs

|                 | Jun-14 | Jul-14 | Aug-14 | Sep-14 | Oct-14 | Nov-14 | Dec-14 | Jan-15 | Feb-15 | Mar-15 | Apr-15 | May-15 | Jun-15 | 13-Month Period |
|-----------------|--------|--------|--------|--------|--------|--------|--------|--------|--------|--------|--------|--------|--------|-----------------|
| Blue/Expo Line  | \$53K  | \$59K  | \$303K | \$77K  | \$119K | \$68K  | \$40K  | \$45K  | \$37K  | \$103K | \$141K | \$123K | \$104K | \$1269K         |
| Red/Purple Line | \$12K  | \$5K   | \$34K  | \$22K  | \$35K  | \$11K  | \$21K  | \$16K  | \$21K  | \$21K  | \$9K   | \$18K  | \$36K  | \$260K          |
| Green Line      | \$9K   | \$18K  | \$15K  | \$10K  | \$8K   | \$5K   | \$10K  | \$59K  | \$30K  | \$12K  | \$5K   | \$3K   | \$3K   | \$188K          |
| Gold Line       | \$42K  | \$28K  | \$51K  | \$28K  | \$29K  | \$31K  | \$30K  | \$32K  | \$55K  | \$32K  | \$30K  | \$30K  | \$40K  | \$456K          |
| Totals:         | \$116K | \$110K | \$402K | \$136K | \$190K | \$115K | \$102K | \$152K | \$143K | \$167K | \$185K | \$173K | \$183K | \$2,174K        |



| June 2015 Vandalism & Graffiti - All Rail |              |                  |                  |                   |
|---|--------------|------------------|------------------|-------------------|
|   | Qty          | Labor            | Materials        | Totals            |
| Windows Replaced                          | 326          | \$ 25,830        | \$ 49,572        | \$ 75,402         |
| Vandal Shields Replaced                   | 984          | \$ 25,276        | \$ 20,206        | \$ 45,482         |
| Seats Cleaned                             | 564          | \$ 810           | \$ 4,032         | \$ 4,842          |
| Seats Inserts Replaced                    | 401          | \$ 12,607        | \$ 13,733        | \$ 26,340         |
| Graffiti Removal - Other                  | 1,087        | \$ 18,026        | \$ 2,639         | \$ 20,665         |
| Repainting Panels                         | 314          | \$ 9,891         | \$ -             | \$ 9,891          |
| <b>Totals</b>                             | <b>3,676</b> | <b>\$ 92,440</b> | <b>\$ 90,182</b> | <b>\$ 182,622</b> |



# Graffiti Pictures

## June 2015

### Blue Line

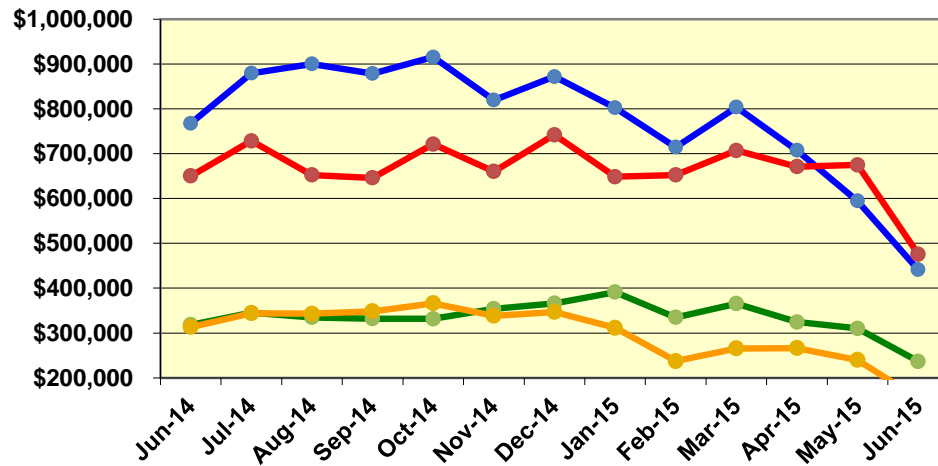


### Green Line

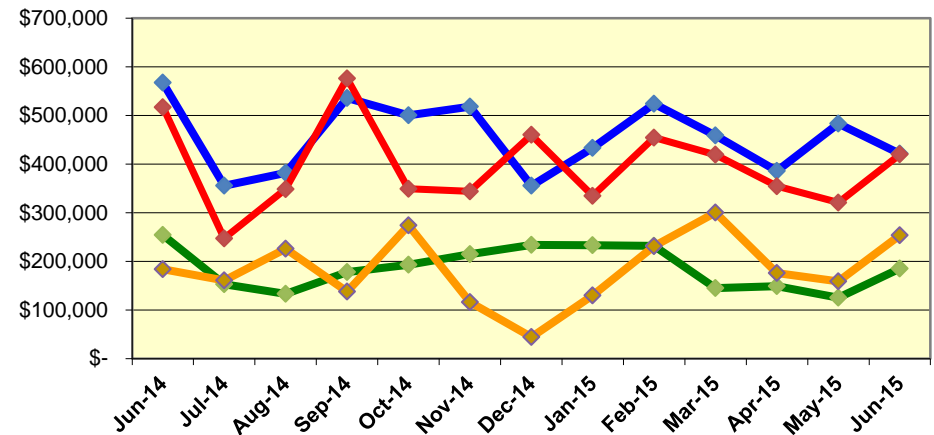


# Labor and Material Costs June 2014-2015

Labor Costs



Material Costs



|                    | Jun-14       | Jul-14       | Aug-14       | Sep-14       | Oct-14       | Nov-14       | Dec-14       | Jan-15       | Feb-15       | Mar-15       | Apr-15       | May-15       | Jun-15*      |
|--------------------|--------------|--------------|--------------|--------------|--------------|--------------|--------------|--------------|--------------|--------------|--------------|--------------|--------------|
| <b>Labor Costs</b> |              |              |              |              |              |              |              |              |              |              |              |              |              |
| Blue/Expo Lines    | \$ 767,717   | \$ 879,339   | \$ 900,043   | \$ 878,598   | \$ 915,432   | \$ 819,497   | \$ 871,682   | \$ 802,256   | \$ 714,349   | \$ 803,757   | \$ 707,348   | \$ 594,550   | \$ 441,364   |
| Red/Purple Lines   | \$ 650,226   | \$ 728,383   | \$ 652,202   | \$ 645,981   | \$ 721,060   | \$ 660,321   | \$ 741,908   | \$ 648,538   | \$ 652,406   | \$ 706,794   | \$ 671,084   | \$ 674,681   | \$ 475,810   |
| Green Line         | \$ 318,516   | \$ 345,270   | \$ 334,772   | \$ 331,870   | \$ 331,661   | \$ 354,058   | \$ 366,422   | \$ 391,161   | \$ 334,919   | \$ 365,457   | \$ 324,550   | \$ 310,181   | \$ 236,931   |
| Gold Line          | \$ 313,589   | \$ 344,331   | \$ 343,246   | \$ 348,288   | \$ 366,248   | \$ 338,610   | \$ 347,182   | \$ 311,868   | \$ 237,438   | \$ 265,835   | \$ 266,529   | \$ 240,056   | \$ 154,498   |
| Totals             | \$ 2,050,048 | \$ 2,297,323 | \$ 2,230,262 | \$ 2,204,736 | \$ 2,334,400 | \$ 2,172,486 | \$ 2,327,193 | \$ 2,153,823 | \$ 1,939,112 | \$ 2,141,842 | \$ 1,969,511 | \$ 1,819,467 | \$ 1,308,603 |

|                       | Jun-14       | Jul-14     | Aug-14       | Sep-14       | Oct-14       | Nov-14       | Dec-14       | Jan-15       | Feb-15       | Mar-15       | Apr-15       | May-15       | Jun-15*      |
|-----------------------|--------------|------------|--------------|--------------|--------------|--------------|--------------|--------------|--------------|--------------|--------------|--------------|--------------|
| <b>Material Costs</b> |              |            |              |              |              |              |              |              |              |              |              |              |              |
| Blue/Expo Lines       | \$ 567,257   | \$ 355,405 | \$ 382,184   | \$ 536,100   | \$ 500,390   | \$ 518,334   | \$ 355,729   | \$ 433,347   | \$ 524,157   | \$ 458,588   | \$ 385,794   | \$ 483,368   | \$ 421,088   |
| Red/Purple Lines      | \$ 516,934   | \$ 247,048 | \$ 348,370   | \$ 576,230   | \$ 349,031   | \$ 343,936   | \$ 460,076   | \$ 334,623   | \$ 454,326   | \$ 419,099   | \$ 354,492   | \$ 320,754   | \$ 420,042   |
| Green Line            | \$ 254,264   | \$ 153,001 | \$ 133,386   | \$ 178,206   | \$ 193,176   | \$ 214,902   | \$ 234,118   | \$ 233,318   | \$ 231,562   | \$ 144,927   | \$ 148,839   | \$ 125,054   | \$ 185,086   |
| Gold Line             | \$ 183,869   | \$ 160,751 | \$ 225,818   | \$ 137,883   | \$ 274,059   | \$ 116,179   | \$ 44,498    | \$ 130,036   | \$ 230,896   | \$ 300,170   | \$ 175,922   | \$ 159,016   | \$ 253,284   |
| Totals                | \$ 1,522,323 | \$ 916,204 | \$ 1,089,759 | \$ 1,428,418 | \$ 1,316,657 | \$ 1,193,351 | \$ 1,094,420 | \$ 1,131,324 | \$ 1,440,941 | \$ 1,322,783 | \$ 1,065,048 | \$ 1,088,194 | \$ 1,279,500 |

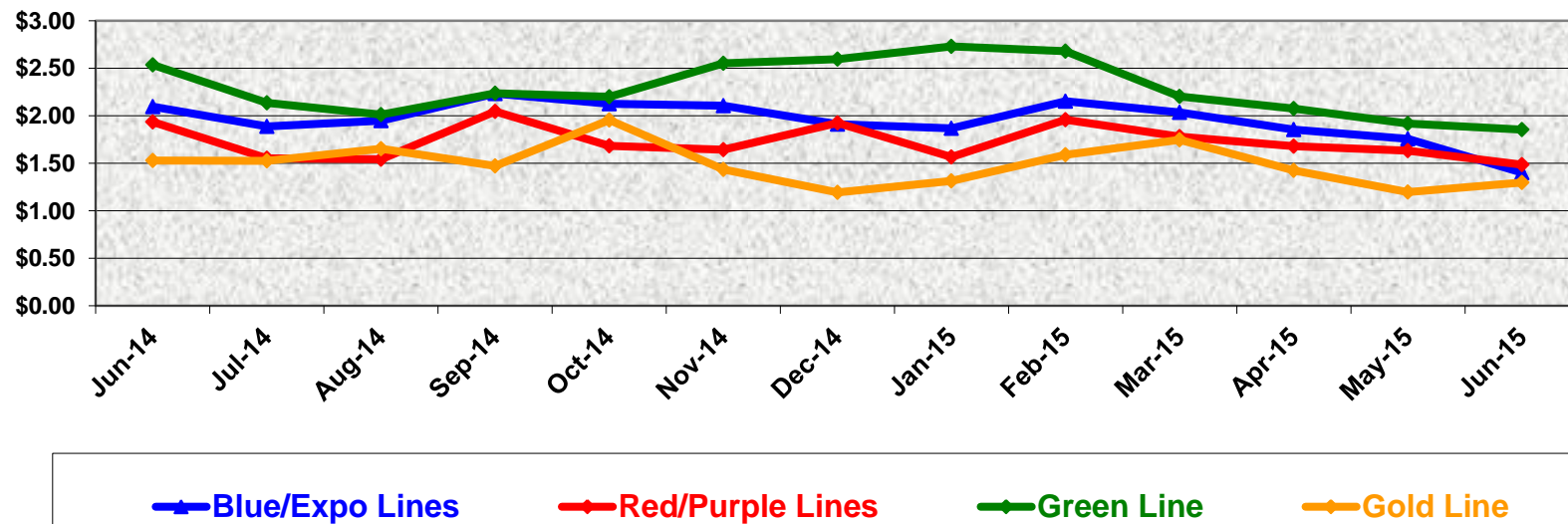
Note: \*Preliminary labor and material costs for June 2015 due to FY15 fiscal year ending awaiting accrual process.

# Cost Per Mile

## June 2014-2015

| Cost per mile:   | Jun-14 | Jul-14 | Aug-14 | Sep-14 | Oct-14 | Nov-14 | Dec-14 | Jan-15 | Feb-15 | Mar-15 | Apr-15 | May-15 | Jun-15 | Average |
|------------------|--------|--------|--------|--------|--------|--------|--------|--------|--------|--------|--------|--------|--------|---------|
| Blue/Expo Lines  | \$2.10 | \$1.89 | \$1.95 | \$2.24 | \$2.13 | \$2.11 | \$1.91 | \$1.87 | \$2.15 | \$2.04 | \$1.85 | \$1.76 | \$1.40 | \$1.95  |
| Red/Purple Lines | \$1.93 | \$1.55 | \$1.54 | \$2.05 | \$1.68 | \$1.64 | \$1.92 | \$1.57 | \$1.96 | \$1.78 | \$1.68 | \$1.63 | \$1.48 | \$1.73  |
| Green Line       | \$2.54 | \$2.14 | \$2.01 | \$2.24 | \$2.20 | \$2.55 | \$2.60 | \$2.73 | \$2.68 | \$2.20 | \$2.08 | \$1.92 | \$1.85 | \$2.29  |
| Gold Line        | \$1.53 | \$1.53 | \$1.65 | \$1.47 | \$1.96 | \$1.44 | \$1.19 | \$1.31 | \$1.59 | \$1.75 | \$1.43 | \$1.20 | \$1.30 | \$1.49  |

Cost per Mile



# ATU Absences vs. Overtime

## June 2015

| ABSENCE TYPE and HOURS              | 3941 & 3947<br>Blue & Expo | 3942<br>Red  | 3943<br>Green | 3944<br>Gold | Total         |
|-------------------------------------|----------------------------|--------------|---------------|--------------|---------------|
| AWP-ABSENT W/O PERMISSION           | -                          | -            | 32            | -            | 32            |
| BER-BEREAVEMENT                     | -                          | 24           | -             | -            | 24            |
| CTO-COMPENSATORY TIME OFF           | 45                         | 74           | 16            | 6            | 141           |
| CUT-EMPLOYEE LEAVES EARLY           | 0                          | -            | 1             | -            | 1             |
| DSL-DISABILITY LEAVE/LONG           | 968                        | 600          | -             | -            | 1,568         |
| EFH-EMG. FLOAT HOL.                 | 88                         | 104          | 96            | 80           | 368           |
| ETO-EXCUSED TIME OFF                | 99                         | 29           | 7             | 23           | 158           |
| FMI-FAM IND INJURY                  | 200                        | 104          | -             | -            | 304           |
| FML-FAMILY CARE LEAVE               | 280                        | 606          | 123           | 336          | 1,345         |
| FMS-FAMILY LEAVE SICK               | 105                        | 365          | -             | -            | 470           |
| HLF-HOLIDAY FLOATING                | 1,136                      | 576          | 320           | 416          | 2,448         |
| II-INDUSTRIAL INJURY                | -                          | -            | 144           | -            | 144           |
| IPD-INJURED PARTIAL DAY             | -                          | 4            | -             | -            | 4             |
| IS-INVESTIGATIVE SUSPENSION         | 32                         | -            | -             | -            | 32            |
| JUR-JURY DUTY                       | 16                         | 56           | -             | -            | 72            |
| LC1-LABOR CODE 233                  | 92                         | 181          | 88            | 64           | 425           |
| LTI-OCCPIL/LONGTRM INJ LEAVE        | 152                        | 352          | -             | -            | 504           |
| MLN-MILITARY ABSENCE-UNPAID         | 16                         | -            | -             | -            | 16            |
| OWP-OFF WITH PERMISSION             | -                          | 0            | -             | -            | 0             |
| SCK-SICK PAY                        | 96                         | 104          | 88            | 276          | 564           |
| SCW-SICK WITHOUT PAY                | 16                         | 16           | 96            | 40           | 168           |
| SUS-DISCIPLINARY SUSPENSION         | 24                         | -            | -             | -            | 24            |
| TAR-TARDY                           | 1                          | 0            | 3             | 1            | 5             |
| VAC-VACATION                        | 1,583                      | 1,556        | 584           | 1,016        | 4,739         |
| VAS-VACATION WHILE SICK             | 64                         | 44           | -             | -            | 108           |
| <b>Total Absence Hours</b>          | <b>5,013</b>               | <b>4,796</b> | <b>1,598</b>  | <b>2,257</b> | <b>13,664</b> |
| ATU Number of Work Force (budget)   | 125                        | 104          | 46            | 48           | 323           |
| Full Work Force hours/month         | 21,663                     | 18,023       | 7,972         | 8,318        | 55,976        |
| <b>Absence as a % of Work Force</b> | <b>23%</b>                 | <b>27%</b>   | <b>20%</b>    | <b>27%</b>   | <b>24%</b>    |

| OVERTIME TYPE and HOURS              | 3941 & 3947<br>Blue & Expo | 3942<br>Red  | 3943<br>Green | 3944<br>Gold | Total         |
|--------------------------------------|----------------------------|--------------|---------------|--------------|---------------|
| CTB-COMPENSATORY TIME TO BANK        | 760                        | 1,118        | 370           | 274          | 2,522         |
| OTP-PREM OVERTIME                    | 3,448                      | 3,361        | 1,229         | 984          | 9,022         |
| WLO-Worked Lunch Overtime            | 127                        | 139          | 90            | 35           | 391           |
| <b>Total Overtime Hours</b>          | <b>4,335</b>               | <b>4,618</b> | <b>1,688</b>  | <b>1,293</b> | <b>11,935</b> |
| <b>Overtime as a % of Work Force</b> | <b>20%</b>                 | <b>26%</b>   | <b>21%</b>    | <b>16%</b>   | <b>21%</b>    |

Note: Overtime also covers other required activities, including Training, Component Overhaul, and Special Events.



**Metro**

# RFS Instruction Department Activities

## June 2015

### Training classes completed during the month of June 2015

| Description  | Course Hours | Student Count | Training Hours |
|--|--------------|---------------|----------------|
| <b><u>Blue &amp; Expo Line Training - (P865/2020 &amp; P2000 LRV):</u></b> |              |               |                |
| RFS LRV RE-RAILING   | 8            | 14            | 112            |
| RFS 2-WEEK RAIL INTRODUCTION   | 80           | 6             | 480            |
| RFS 865/2020 PROPULSION  | 32           | 9             | 288            |
| RFS 865/2020 FRICTION BRAKES   | 56           | 8             | 448            |
| EMS GENERAL AWARENESS TRAINING   | 0.5          | 1             | 0.5            |
| RFS SIEMENS 2000 AUX. INVERTER   | 32           | 8             | 256            |
| RFS SIEMENS 2000 DOOR CONTROLS   | 40           | 8             | 320            |
| RFS SIEMENS 2000 FRICTION BRAKES   | 48           | 8             | 384            |

**Total Blue Line Training (Hours): 2,289**

|  |    |   |     |
|--|----|---|-----|
| <b><u>Gold Line Training (P2550 LRVs):</u></b> |    |   |     |
| RFS ANSALDOBREDA 2550 LIGHTING                 | 12 | 8 | 96  |
| RFS ANSALDOBREDA 2550 FRICTION BRAKES          | 40 | 8 | 320 |

**Total Gold Line Training (Hours): 416**

|   |    |   |     |
|---|----|---|-----|
| <b><u>Green Line Training (P2000 LRVs):</u></b> |    |   |     |
| RFS SIEMENS 2000 US&S ATP/ATO/TWC               | 48 | 4 | 192 |
| RFS SIEMENS 2000 AUX. INVERTER                  | 32 | 4 | 128 |

**Total Green Line Training (Hours): 320**

**Total RFS Instruction for the month of June 2015 (Hours): 3,025**

### Other Instruction Activities

|   |     |
|---|-----|
| A650 Curriculum, Administrative, and Technical Support      | 144 |
| P865\2020 Curriculum, Administrative, and Technical Support | 40  |
| P2000 Curriculum, Administrative, and Technical Support     | 80  |
| P2550 Curriculum, Administrative, and Technical Support     | 40  |
| Instructor Holiday, Vacation, Sick                          | 56  |
| 2015 APTA Rail Rodeo  | 72  |

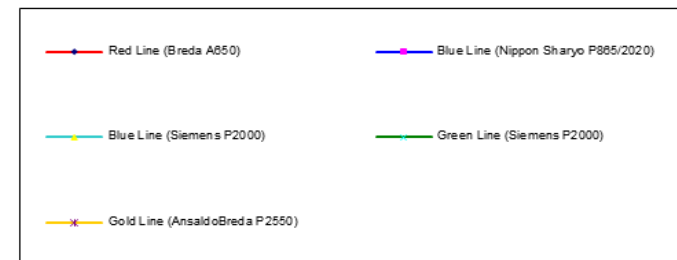
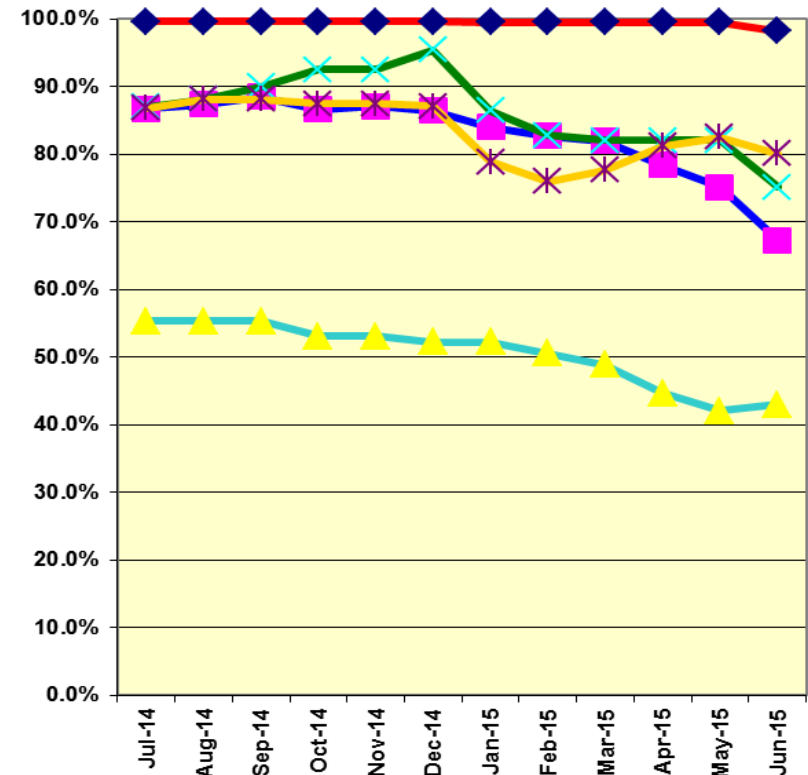
**Total Other Instruction Activities 432**

**Core Vehicle Training Completed: BLUE RED GREEN GOLD**

**Percentage of core vehicle training complete: 67.3% 98.2% 75.1% 80.1%**  
**Siemens P2000 training complete: 43.0% N/A N/A N/A**

**Average Specialist Rail Experience Level in Years: 9.7 11.7 7.8 8.5**

### Core Training Completed



**Variations caused by new hires, employee transfers, & training completed**