



# **Rail Fleet Services Monthly Report October 2015**



**Metro**

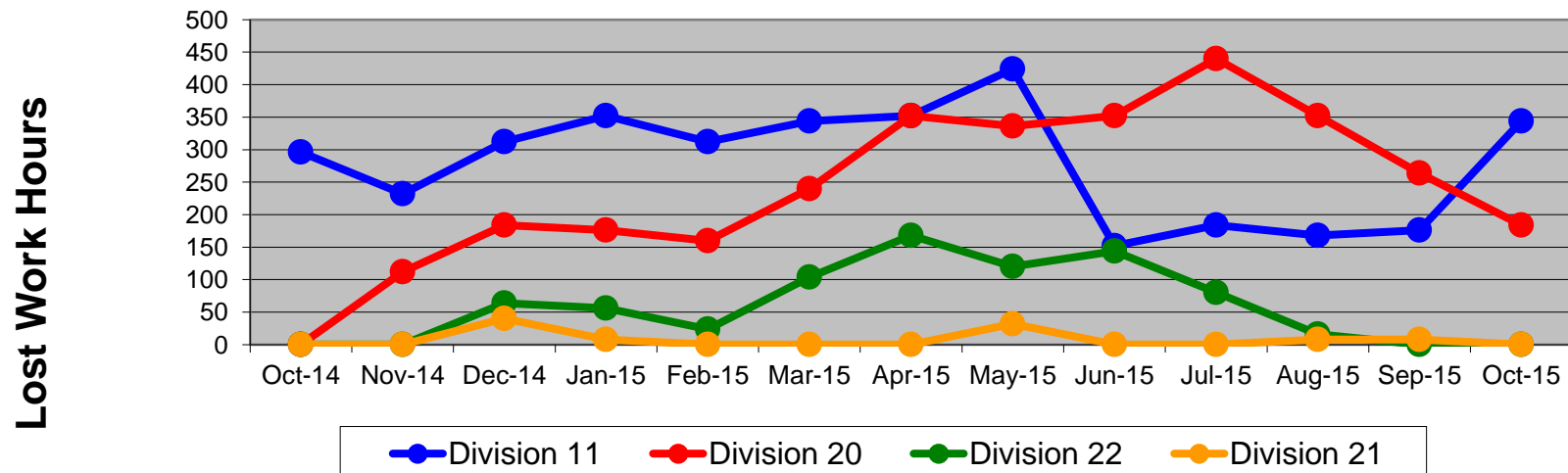
# Table of Contents

|   |  |      |    |
|---|--|------|----|
| • | Safety & Cleanliness                           |      |    |
|   | - Industrial Injuries                          | Page | 3  |
|   | - Rail Vehicle Accidents & Major Incidents     | Page | 4  |
|   | - Car Cleanliness                              | Page | 5  |
| • | Customer Service                               |      |    |
|   | - Service Delivery – AM/PM Pull-Outs           | Page | 6  |
|   | - Vehicle Utilization – Blue Line & Green Line | Page | 7  |
|   | - Vehicle Utilization – Red Line & Gold Line   | Page | 8  |
|   | - All Train Delay Incidents                    | Page | 9  |
|   | - Mean Miles Between Failures (Major)          | Page | 10 |
|   | - Mileage Between Data Range (by month)        | Page | 11 |
| • | Business Processes                             |      |    |
|   | - Top Incident Categories                      | Page | 12 |
|   | - Major Incidents                              | Page | 13 |
|   | - Preventive Maintenance Compliance            | Page | 14 |
|   | - RFS Leader Wrench Turning                    | Page | 15 |
| • | Finance  |      |    |
|   | - Vandalism & Graffiti Costs                   | Page | 16 |
|   | - Graffiti Pictures                            | Page | 17 |
|   | - Labor & Material Costs                       | Page | 18 |
|   | - Cost per mile                                | Page | 19 |
|   | - Absence vs. Overtime                         | Page | 20 |
| • | Growth   |      |    |
|   | - RFS Instruction Department Activities        | Page | 21 |

# Industrial Injuries – Lost Work Hours October 2014-2015

|             | Oct-14 | Nov-14 | Dec-14 | Jan-15 | Feb-15 | Mar-15 | Apr-15 | May-15 | Jun-15 | Jul-15 | Aug-15 | Sep-15 | Oct-15 | 13-Month<br>Period |
|-------------|--------|--------|--------|--------|--------|--------|--------|--------|--------|--------|--------|--------|--------|--------------------|
| Division 11 | 296    | 232    | 312    | 352    | 312    | 344    | 352    | 424    | 152    | 184    | 168    | 176    | 344    | 3,648              |
| Division 20 | 0      | 112    | 184    | 176    | 160    | 240    | 352    | 336    | 352    | 440    | 352    | 264    | 184    | 3,152              |
| Division 22 | 0      | 0      | 64     | 56     | 24     | 104    | 168    | 120    | 144    | 80     | 16     | 0      | 0      | 776                |
| Division 21 | 0      | 0      | 40     | 8      | 0      | 0      | 0      | 32     | 0      | 0      | 8      | 8      | 0      | 96                 |
| Totals      | 296    | 344    | 600    | 592    | 496    | 688    | 872    | 912    | 648    | 704    | 544    | 448    | 528    | 7,672              |

## Industrial Injuries (lost work hours)



# Rail Vehicle Accidents & Major Incidents

## October 2014-2015

| Repair Costs    | Oct-14          | Nov-14         | Dec-14         | Jan-15         | Feb-15          | Mar-15          | Apr-15          | May-15         | Jun-15         | Jul-15          | Aug-15         | Sep-15         | Oct-15          | 13-Month Period  |
|-----------------|-----------------|----------------|----------------|----------------|-----------------|-----------------|-----------------|----------------|----------------|-----------------|----------------|----------------|-----------------|------------------|
| Blue/Expo Line  | \$12,945        | \$5,762        | \$3,463        | \$9,301        | \$17,834        | \$17,322        | \$12,056        | \$1,655        | \$4,811        | \$5,716         | \$1,971        | \$2,838        | \$40,969        | \$136,643        |
| Red/Purple Line | \$4,194         | \$0            | \$0            | \$0            | \$0             | \$0             | \$0             | \$0            | \$0            | \$0             | \$0            | \$0            | \$0             | \$4,194          |
| Green Line      | \$267           | \$0            | \$0            | \$0            | \$0             | \$0             | \$0             | \$0            | \$0            | \$0             | \$5,333        | \$0            | \$1,205         | \$6,805          |
| Gold Line       | \$0             | \$0            | \$5,664        | \$0            | \$315           | \$0             | \$0             | \$4,833        | \$1,494        | \$8,204         | \$2,611        | \$0            | \$1,074         | \$24,195         |
| <b>Totals</b>   | <b>\$17,406</b> | <b>\$5,762</b> | <b>\$9,127</b> | <b>\$9,301</b> | <b>\$18,149</b> | <b>\$17,322</b> | <b>\$12,056</b> | <b>\$6,488</b> | <b>\$6,305</b> | <b>\$13,920</b> | <b>\$9,915</b> | <b>\$2,838</b> | <b>\$43,248</b> | <b>\$171,837</b> |

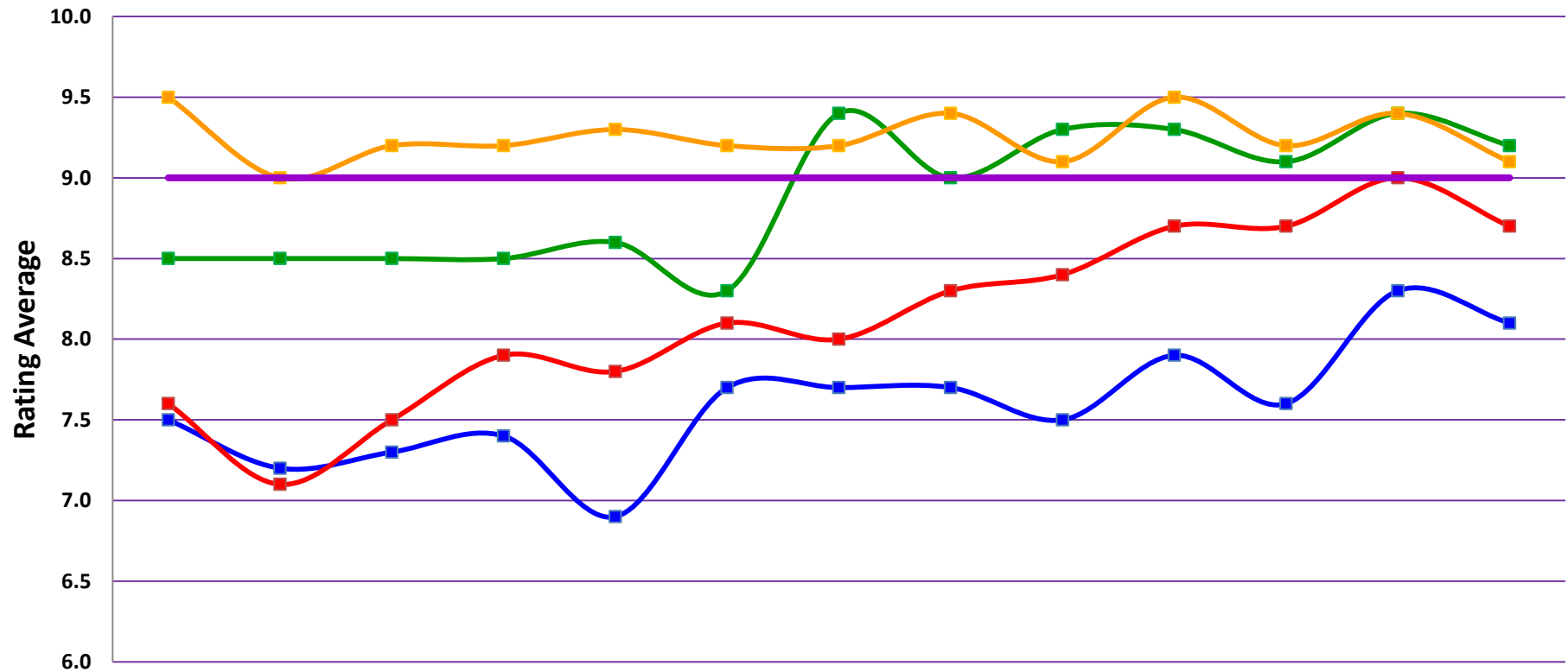
| Rail Vehicle Accident Costs - October 2015  |            |                   |   |                  |
|---|------------|-------------------|---|------------------|
| Date  | Incident # | Problem Code      | Incident Description  | Repair Cost      |
| <b>Metro Blue/Expo Line</b>   |            |                   |   |                  |
| 10/3/15   | 2647024    | Train vs. Object  | A 10-71 was reported. Train 118, lead car (107A) ran over some metal debris that was fouling the southbound track, thus causing the air reservoir tank or hosing to become damaged. | \$ 9,013         |
| 10/3/15   | 2647079    | Train vs. Vehicle | A 10-73 was reported. Train 112, at Willowbrook and 130th St., Track 2, Southbound.   | \$ 31,234        |
| 10/16/15  | 2652212    | Train vs. Vehicle | A 10-73 was reported. Train 106, at Flower and Pico.  | \$ 722           |
| <b>Total</b>  |            |                   |   | <b>\$ 40,969</b> |
| <b>Metro Green Line</b>   |            |                   |   |                  |
| 10/17/15  | 2652426    | Train vs. Object  | A 10-71 was reported. Skirt became loose on car 201B and made contact with the fence at Aviation station Track 1.   | \$ 1,205         |
| <b>Total</b>  |            |                   |   | <b>\$ 1,205</b>  |
| <b>Metro Gold Line</b>  |            |                   |   |                  |
| 10/18/15  | 2652591    | Train vs. Vehicle | A 10-73 was reported. Train 402, at California Grade crossing, Track 2 unable to proceed.   | \$ 1,074         |
| <b>Total</b>  |            |                   |   | <b>\$ 1,074</b>  |
| <b>Grand Total</b>  |            |                   |   | <b>\$ 43,248</b> |
| (10-71) = Train vs. Object, (10-72) = Train vs. Pedestrian, (10-73) = Train vs. Vehicle (10-74) = Train vs. MTA Vehicle, (10-75) = Derailment |            |                   |   |                  |

**Note:** Repair costs are only the expenses captured during the time period of the report. Actual costs may be significantly higher, if repairs are spread out over several months.

# Rail Vehicle – Car Cleanliness

## October 2014-2015

### Car Cleanliness Monthly Report



|                   | Oct-14 | Nov-14 | Dec-14 | Jan-15 | Feb-15 | Mar-15 | Apr-15 | May-15 | Jun-15 | Jul-15 | Aug-15 | Sep-15 | Oct-15 |
|-------------------|--------|--------|--------|--------|--------|--------|--------|--------|--------|--------|--------|--------|--------|
| Div 11 Blue/Expo  | 7.5    | 7.2    | 7.3    | 7.4    | 6.9    | 7.7    | 7.7    | 7.7    | 7.5    | 7.9    | 7.6    | 8.3    | 8.1    |
| Div 20 Red/Purple | 7.6    | 7.1    | 7.5    | 7.9    | 7.8    | 8.1    | 8.0    | 8.3    | 8.4    | 8.7    | 8.7    | 9.0    | 8.7    |
| Div 22 Green      | 8.5    | 8.5    | 8.5    | 8.5    | 8.6    | 8.3    | 9.4    | 9.0    | 9.3    | 9.3    | 9.1    | 9.4    | 9.2    |
| Div 21 Gold       | 9.5    | 9.0    | 9.2    | 9.2    | 9.3    | 9.2    | 9.2    | 9.4    | 9.1    | 9.5    | 9.2    | 9.4    | 9.1    |
| Rail Goal         | 9.0    | 9.0    | 9.0    | 9.0    | 9.0    | 9.0    | 9.0    | 9.0    | 9.0    | 9.0    | 9.0    | 9.0    | 9.0    |

# Service Delivery October 2015

## October 2015 - Service Delivery

### Blue/Expo Line Fleet Size: 92

| <u>Pull Out</u>         | <u>Vehicles Required</u> | <u>Average Available</u> | <u>% Up (Down)</u> |
|-------------------------|--------------------------|--------------------------|--------------------|
| Weekday:                | 78                       | 76                       | 97%                |
| Weekend:                | 60                       | 62                       | 103%               |
| Late Pullouts: 0        |                          |                          |                    |
| <b>Monthly Mileage:</b> | <b>635,867</b>           |                          |                    |

### Red/Purple Line Fleet Size: 104

| <u>Pull Out</u>         | <u>Vehicles Required</u> | <u>Average Available</u> | <u>% Up (Down)</u> |
|-------------------------|--------------------------|--------------------------|--------------------|
| Weekday:                | 74                       | 80                       | 108%               |
| Weekend:                | 54                       | 72                       | 133%               |
| Late Pullouts: 0        |                          |                          |                    |
| <b>Monthly Mileage:</b> | <b>622,428</b>           |                          |                    |

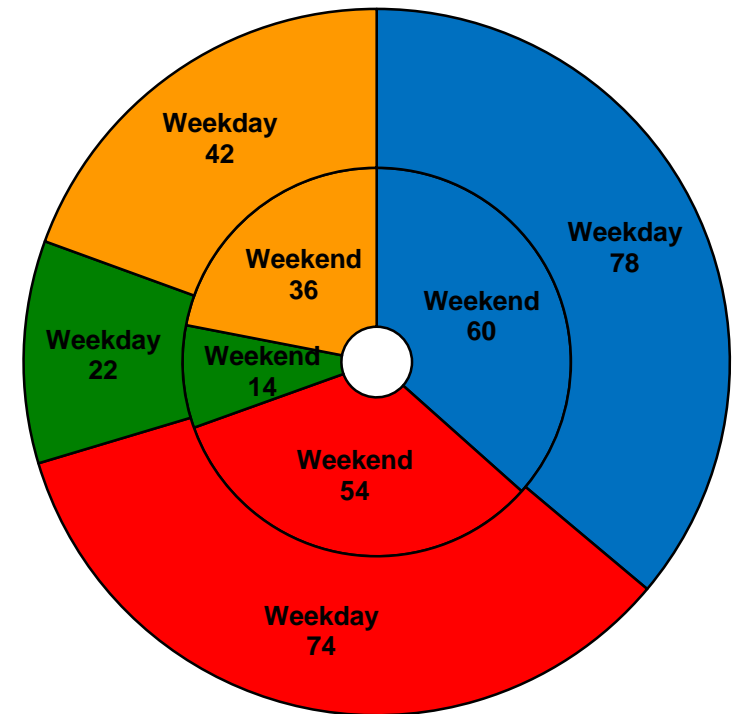
### Green Line Fleet Size: 29

| <u>Pull Out</u>         | <u>Vehicles Required</u> | <u>Average Available</u> | <u>% Up (Down)</u> |
|-------------------------|--------------------------|--------------------------|--------------------|
| Weekday:                | 22                       | 22                       | 100%               |
| Weekend:                | 14                       | 16                       | 114%               |
| Late Pullouts: 0        |                          |                          |                    |
| <b>Monthly Mileage:</b> | <b>234,627</b>           |                          |                    |

### Gold Line Fleet Size: 50

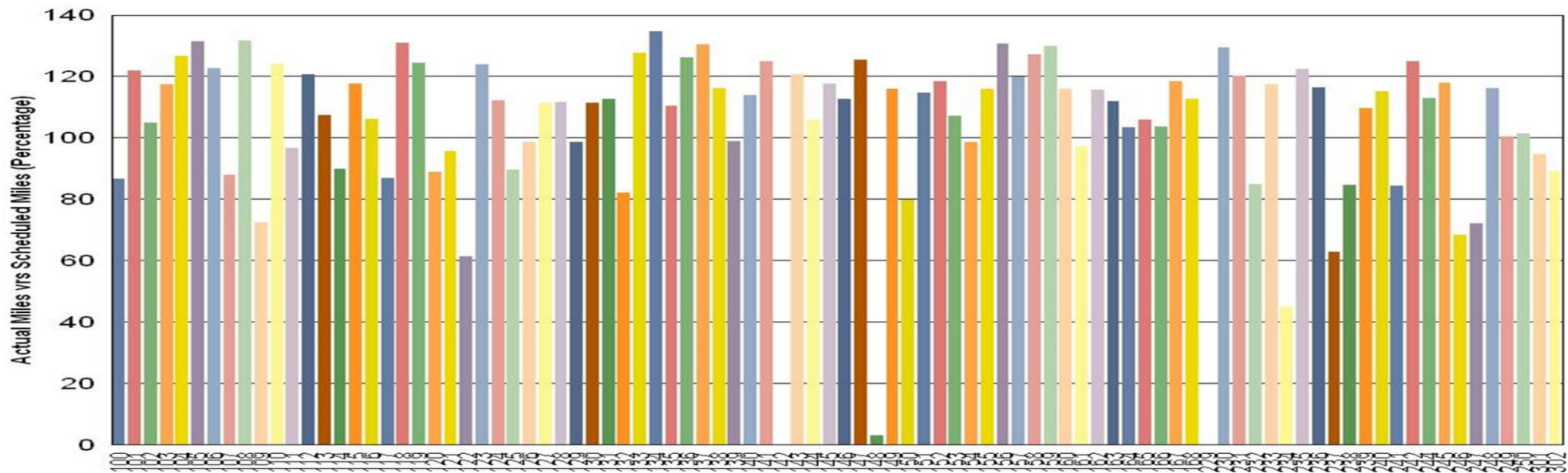
| <u>Pull Out</u>          | <u>Vehicles Required</u> | <u>Average Available</u> | <u>% Up (Down)</u> |
|--------------------------|--------------------------|--------------------------|--------------------|
| Weekday:                 | 42                       | 42                       | 100%               |
| Weekend:                 | 36                       | 38                       | 106%               |
| Late Pullouts: 0         |                          |                          |                    |
| <b>Monthly Mileage*:</b> | <b>326,966</b>           |                          |                    |

\* Gold Line monthly mileage includes Division 21 and 24.



# Vehicle Utilization October 2015

## Metro Blue/Expo Line (92 Cars)



**Blue/Expo Line:** The following cars were out of service due to:

**Car # 142** Long Term Accident Repair

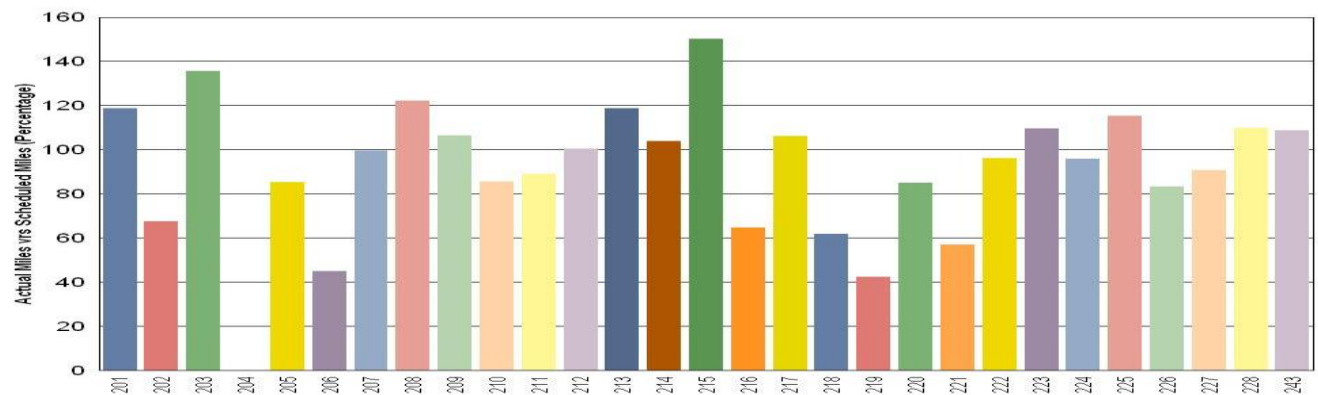
**Car # 148** Repairs and Training Vehicle

**Car # 229** Expo II Engineering /Testing

**Green Line:** The following car was out of service due to:

**Car # 204** 90K Inspection, Propulsion issues  
P-signal Generator

## Metro Green Line (29 Cars)



*Note: Percentage includes an average 4% mileage deduction for yard mileage and vehicle testing.*

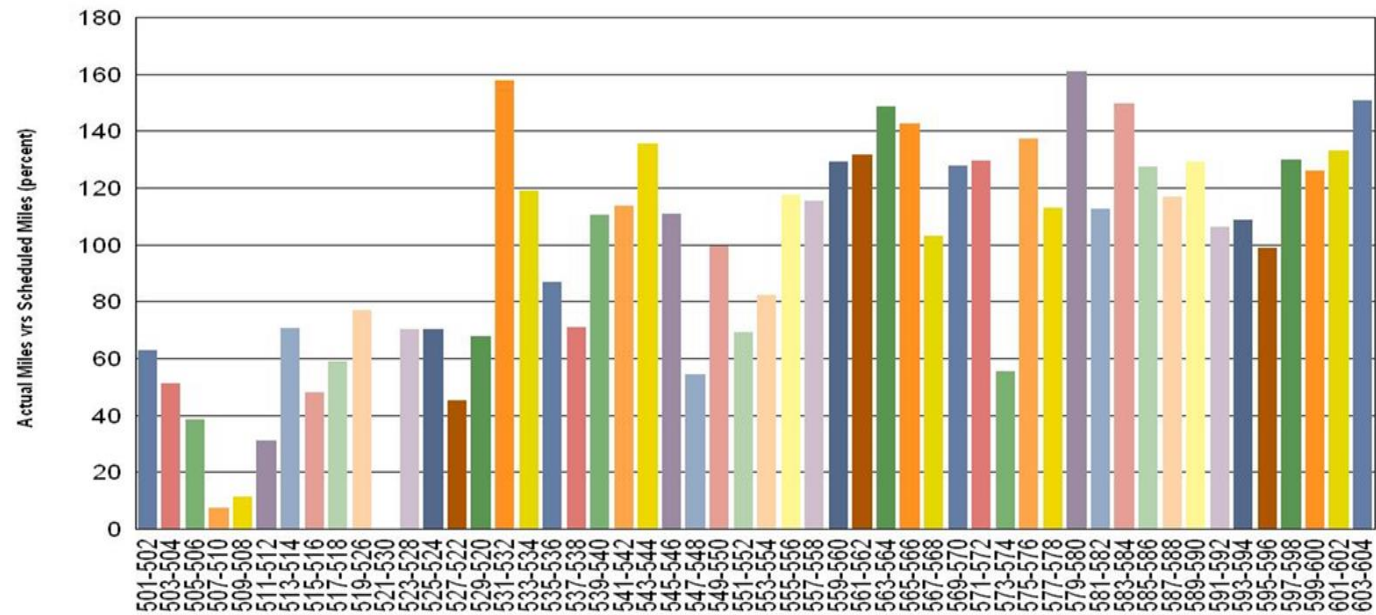
# Vehicle Utilization October 2015

## Red/Purple Line:

The following cars were out of service due to:

- 505-506- Propulsion
- 507-510- Flooring Project.
- 509-508- Truck Replacement
- 511-512- Friction Brakes
- 521-530- Traction Motors/Trucks.

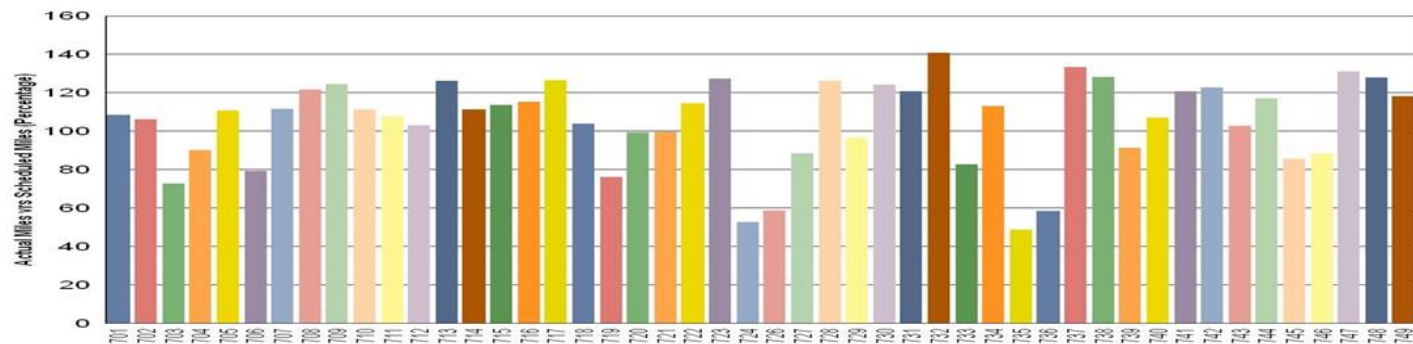
## Metro Red/Purple Line (104 Cars)



## Gold Line:

The fleet has met the daily maximum utilization requirements for the month.

## Metro Gold Line (50 Cars)

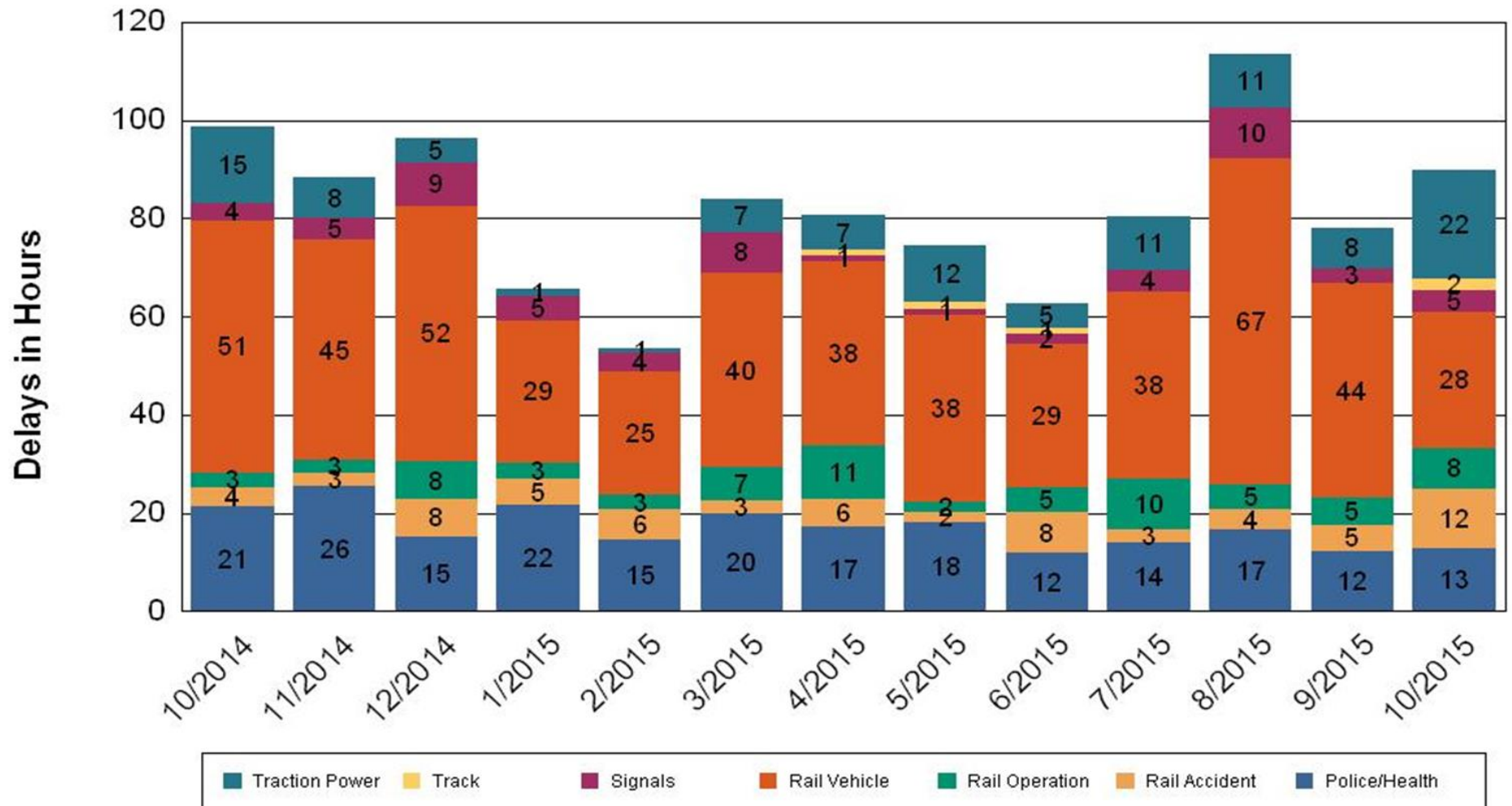




# All Train Delays (Hours) October 2014-2015

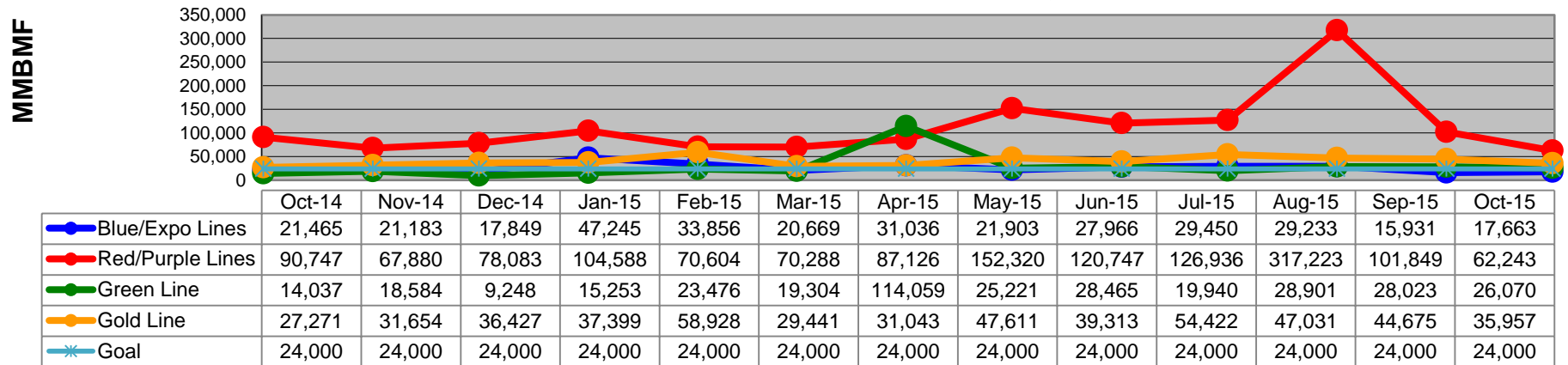
## All Train Delays

Totals Include the delay to all trains involved (not just the primary incident)

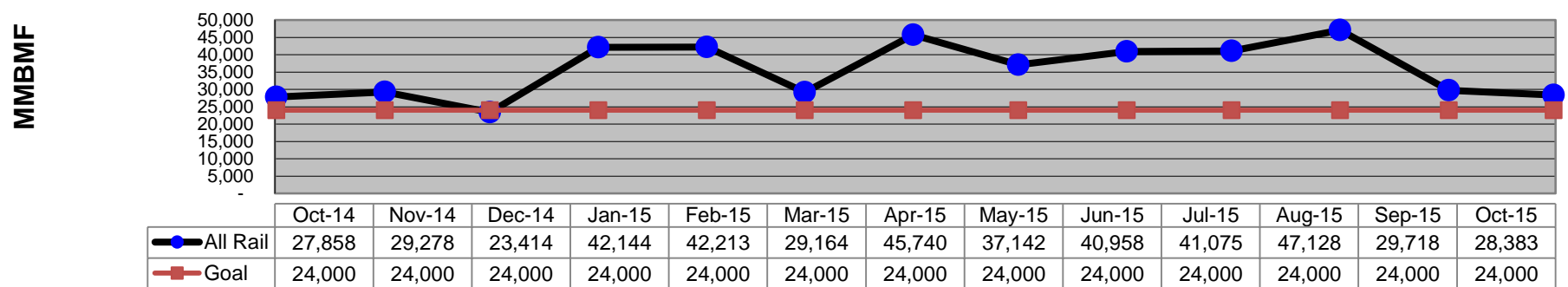


# Mean Miles Between Failures (Major) October 2014-2015

## Mean Miles Between Major Failures (by line)



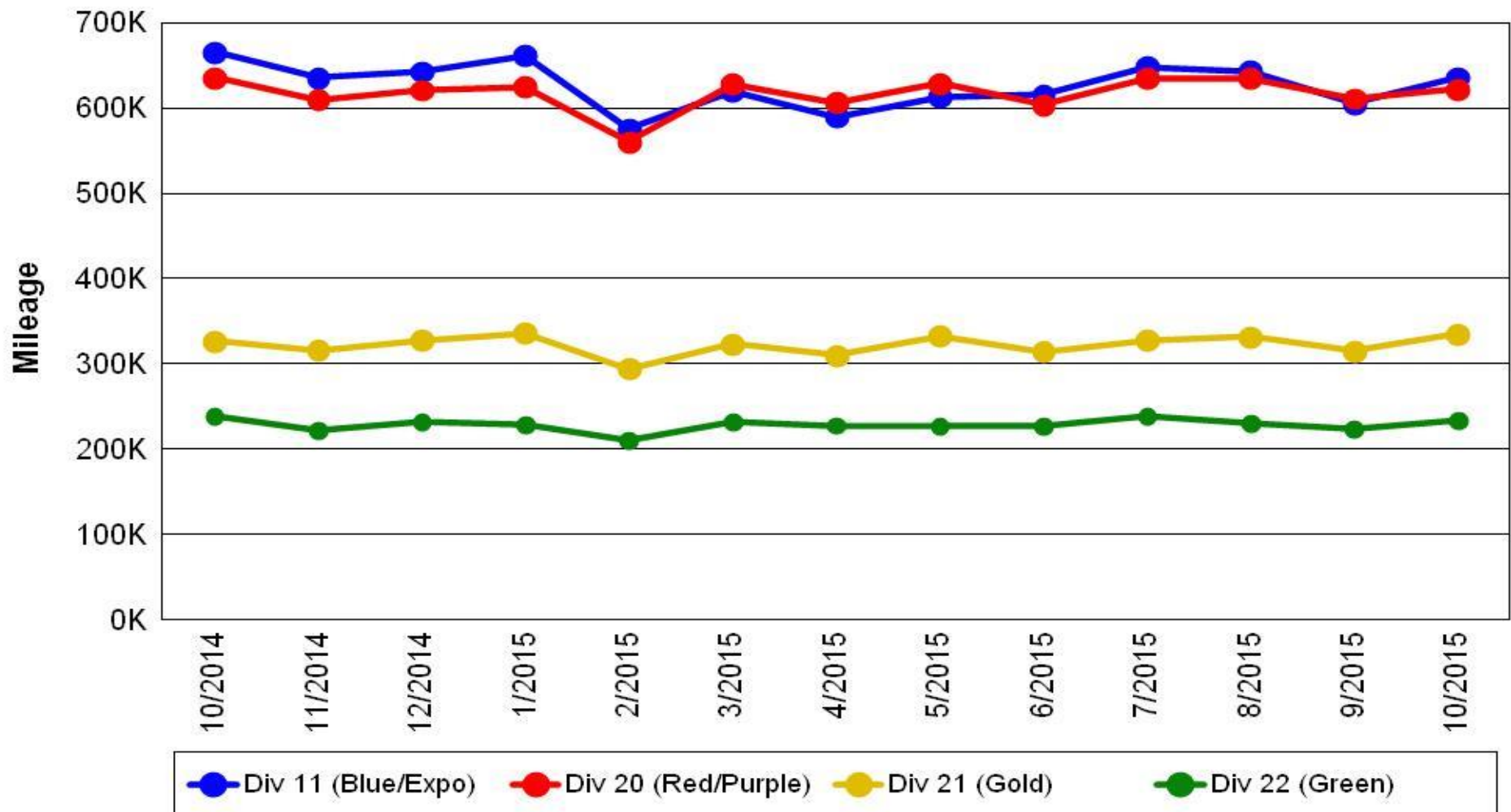
## Mean Miles Between Major Failures (all)



# Mileage Between Data Range (by month)

## October 2014-2015

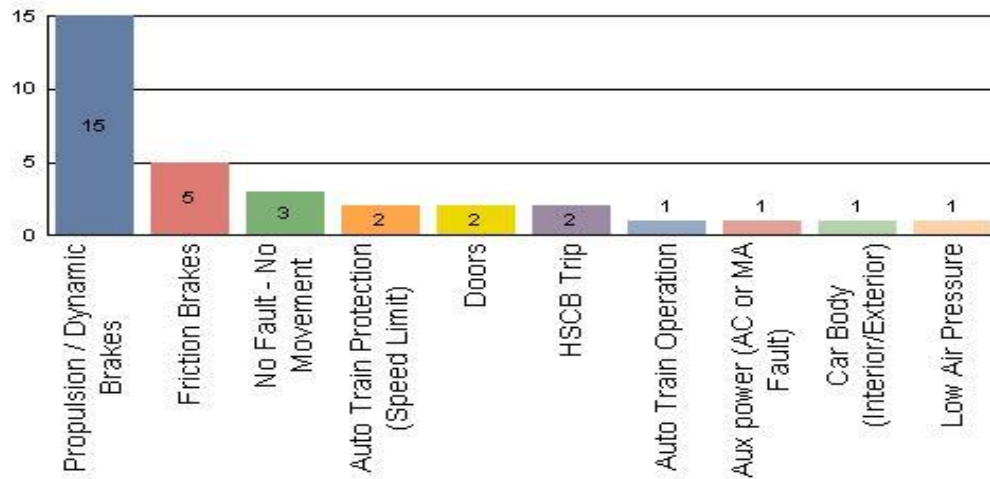
### Rail Division Monthly Mileage



# Top Incident Categories October 2015

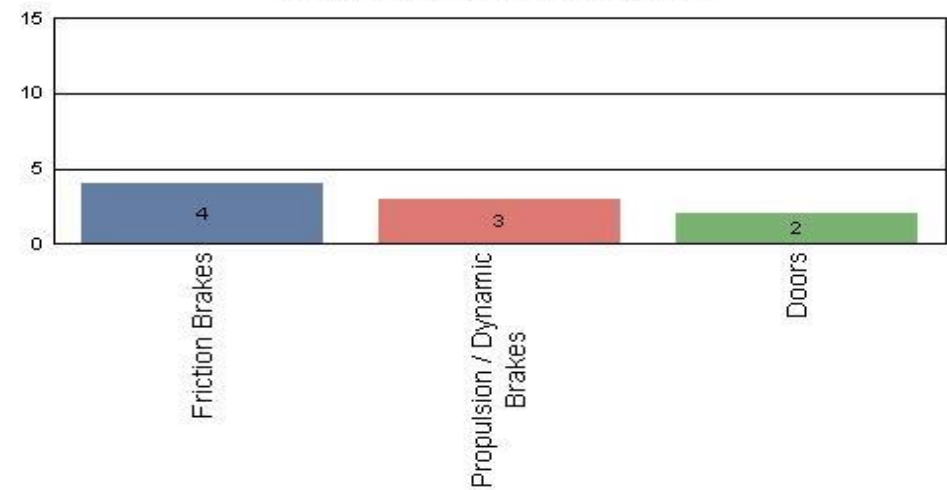
## Metro Blue/Expo Line

### Top Incident Categories



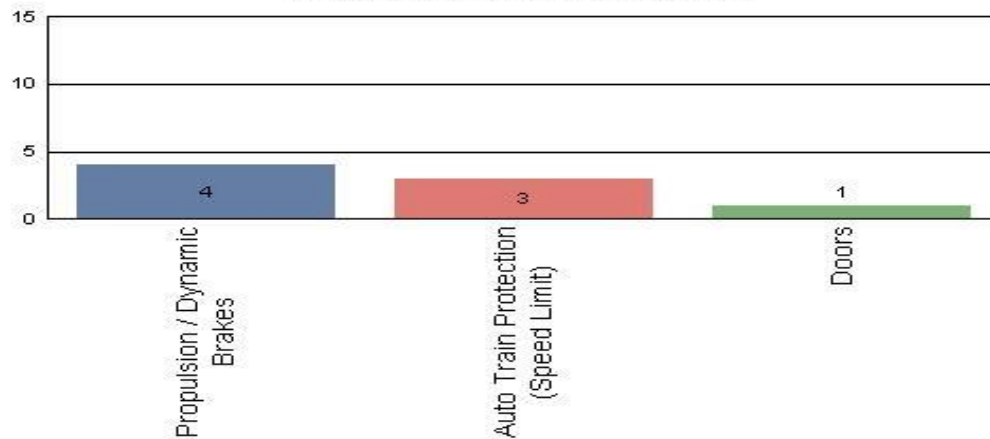
## Metro Red/Purple Line

### Top Incident Categories



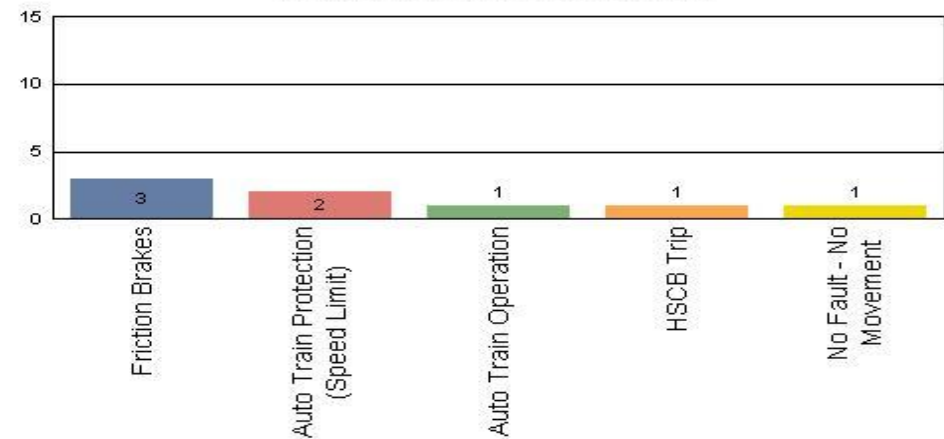
## Metro Green Line

### Top Incident Categories



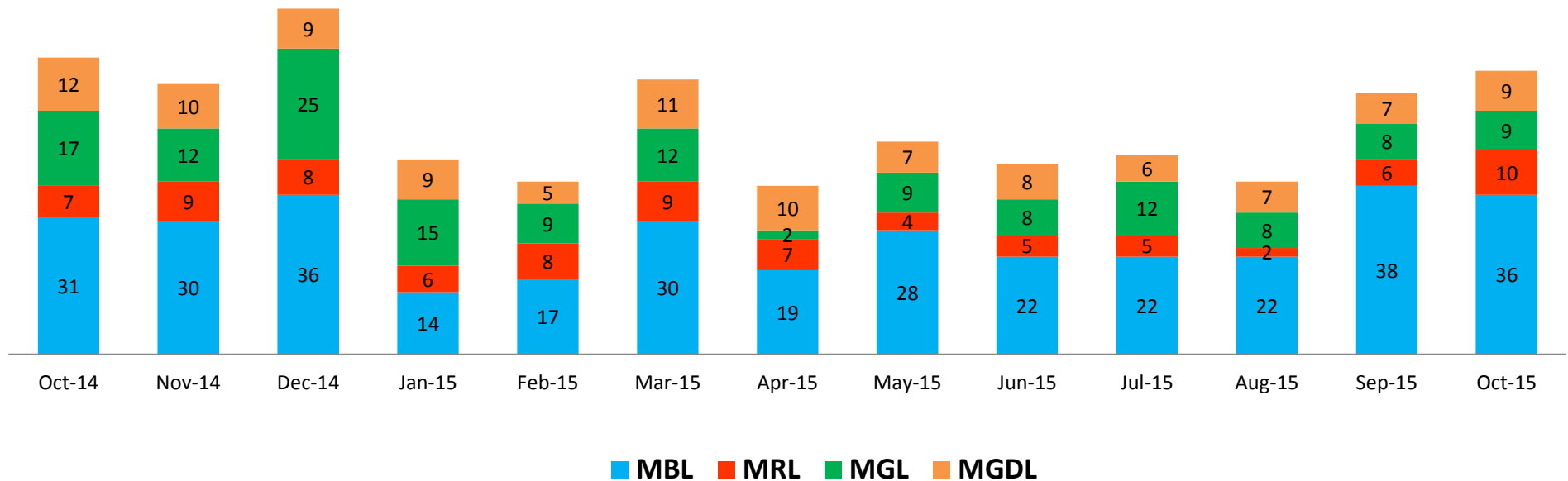
## Metro Gold Line

### Top Incident Categories



# Major Incidents October 2014-2015

## Numbers of Major System Failures (by Line)



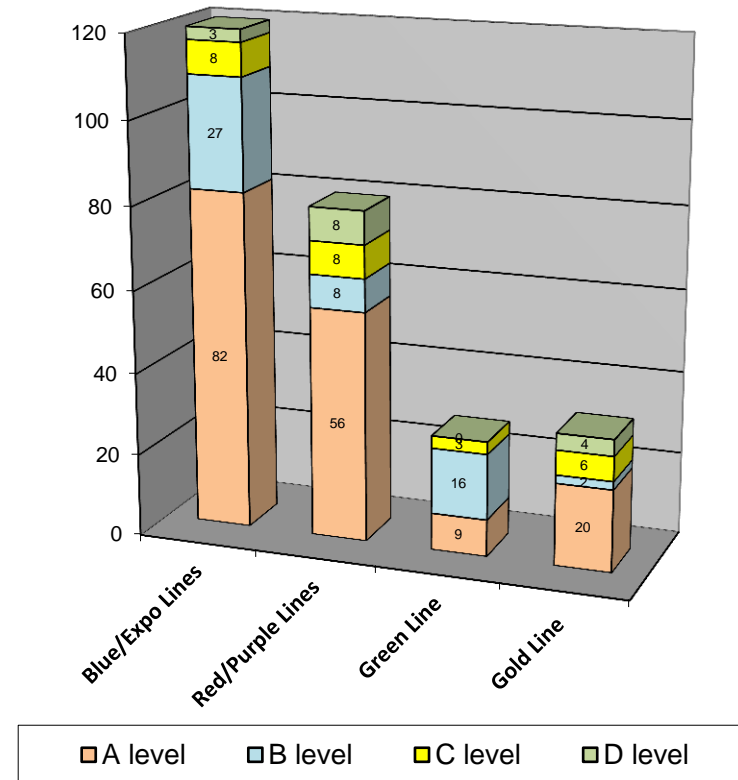
# Preventive Maintenance Compliance

## October 2014-2015

| PM Compliance    | Oct-14 | Nov-14 | Dec-14 | Jan-15 | Feb-15 | Mar-15 | Apr-15 | May-15 | Jun-15 | Jul-15 | Aug-15 | Sep-15 | Oct-15 |
|------------------|--------|--------|--------|--------|--------|--------|--------|--------|--------|--------|--------|--------|--------|
| Blue/Expo Lines  | 100%   | 100%   | 100%   | 100%   | 100%   | 100%   | 100%   | 100%   | 100%   | 100%   | 100%   | 100%   | 100%   |
| Red/Purple Lines | 100%   | 100%   | 100%   | 100%   | 100%   | 100%   | 97%    | 100%   | 100%   | 100%   | 100%   | 100%   | 100%   |
| Green Line       | 100%   | 97%    | 100%   | 100%   | 100%   | 100%   | 100%   | 100%   | 100%   | 100%   | 100%   | 100%   | 100%   |
| Gold Line        | 100%   | 100%   | 100%   | 100%   | 100%   | 100%   | 100%   | 100%   | 96%    | 100%   | 100%   | 100%   | 94%    |

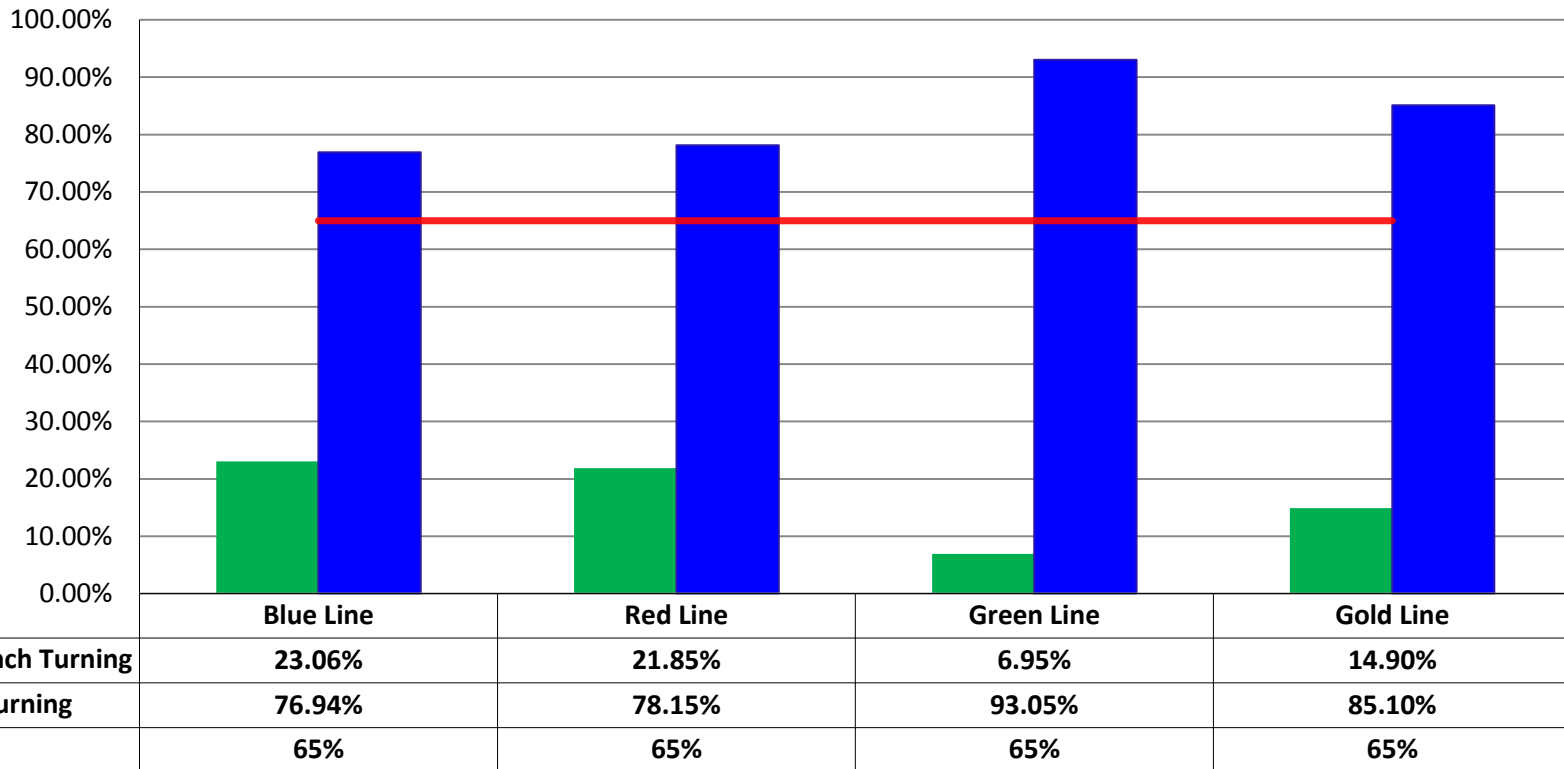
| Number of Preventive Maintenance Inspections - October 2015 |         |         |         |         |        |
|---|---------|---------|---------|---------|--------|
| Line  | A level | B level | C level | D level | Totals |
| Blue/Expo Lines   | 82      | 27      | 8       | 3       | 120    |
| Red/Purple Lines  | 56      | 8       | 8       | 8       | 80     |
| Green Line  | 9       | 16      | 3       | 0       | 28     |
| Gold Line   | 20      | 2       | 6       | 4       | 32     |
| Totals:   | 167     | 53      | 25      | 15      | 260    |

| Explanation of PM Inspection levels |            | Miles   |         |         |         |
|-------------------------------------|------------|---------|---------|---------|---------|
| Line                                | Type       | A level | B level | C level | D level |
| Blue/Expo Lines                     | P865/P2020 | 5,000   | 15,000  | 30,000  | 60,000  |
| Blue/Expo Lines                     | P2000      | 7,500   | 22,500  | 45,000  | 90,000  |
| Red/Purple Lines                    | A650       | 7,500   | 22,500  | 45,000  | 90,000  |
| Green Line                          | P2000      | 7,500   | 22,500  | 45,000  | 90,000  |
| Gold Line                           | P2550      | 10,000  | 30,000  | 60,000  | 120,000 |



# RFS Leader Wrench Turning October 2015

## RFS - Leader Wrench Turning October 2015



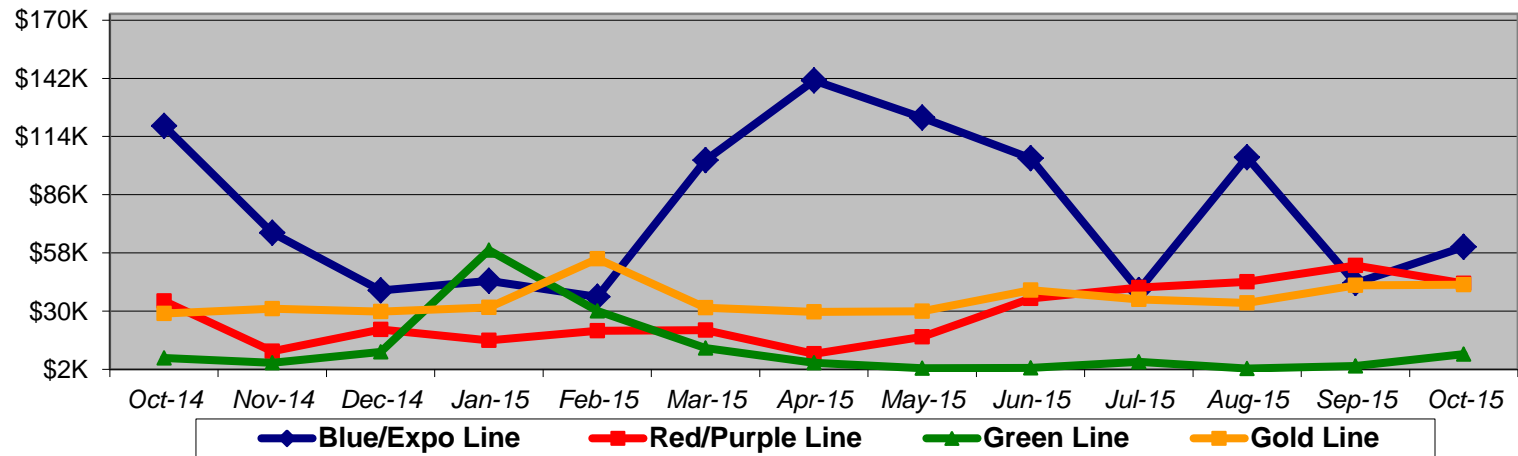
**Notes:** Labor hours contributed by Maint Specialist Leader, Rail Body/Paint Repair Leader, and Maint Specialist Temporary Leader

# Vandalism & Graffiti Report

## October 2014-2015

Graffiti Costs

|                 | Oct-14 | Nov-14 | Dec-14 | Jan-15 | Feb-15 | Mar-15 | Apr-15 | May-15 | Jun-15 | Jul-15 | Aug-15 | Sep-15 | Oct-15 | 13-Month Period |
|-----------------|--------|--------|--------|--------|--------|--------|--------|--------|--------|--------|--------|--------|--------|-----------------|
| Blue/Expo Line  | \$119K | \$68K  | \$40K  | \$45K  | \$37K  | \$103K | \$141K | \$123K | \$104K | \$40K  | \$104K | \$43K  | \$61K  | \$1027K         |
| Red/Purple Line | \$35K  | \$11K  | \$21K  | \$16K  | \$21K  | \$21K  | \$9K   | \$18K  | \$36K  | \$41K  | \$44K  | \$52K  | \$43K  | \$369K          |
| Green Line      | \$8K   | \$5K   | \$10K  | \$59K  | \$30K  | \$12K  | \$5K   | \$3K   | \$3K   | \$6K   | \$2K   | \$4K   | \$9K   | \$157K          |
| Gold Line       | \$29K  | \$31K  | \$30K  | \$32K  | \$55K  | \$32K  | \$30K  | \$30K  | \$40K  | \$36K  | \$34K  | \$42K  | \$43K  | \$463K          |
| Totals:         | \$190K | \$115K | \$102K | \$152K | \$143K | \$167K | \$185K | \$173K | \$183K | \$123K | \$185K | \$142K | \$156K | \$2,015K        |



| October 2015 Vandalism & Graffiti - All Rail |              |                  |                  |                   |
|--|--------------|------------------|------------------|-------------------|
|  | Qty          | Labor            | Materials        | Totals            |
| Windows Replaced                             | 188          | \$ 19,341        | \$ 29,272        | \$ 48,613         |
| Vandal Shields Replaced                      | 714          | \$ 16,548        | \$ 15,139        | \$ 31,687         |
| Seats Cleaned                                | 654          | \$ 5,547         | \$ 1,953         | \$ 7,500          |
| Seats Inserts Replaced                       | 358          | \$ 22,113        | \$ 11,086        | \$ 33,199         |
| Graffiti Removal - Other                     | 786          | \$ 15,888        | \$ 9,493         | \$ 25,381         |
| Repainting Panels                            | 321          | \$ 10,112        | \$ -             | \$ 10,112         |
| <b>Totals</b>                                | <b>3,021</b> | <b>\$ 89,549</b> | <b>\$ 66,943</b> | <b>\$ 156,492</b> |



# Graffiti Pictures October 2015

**Blue Line**



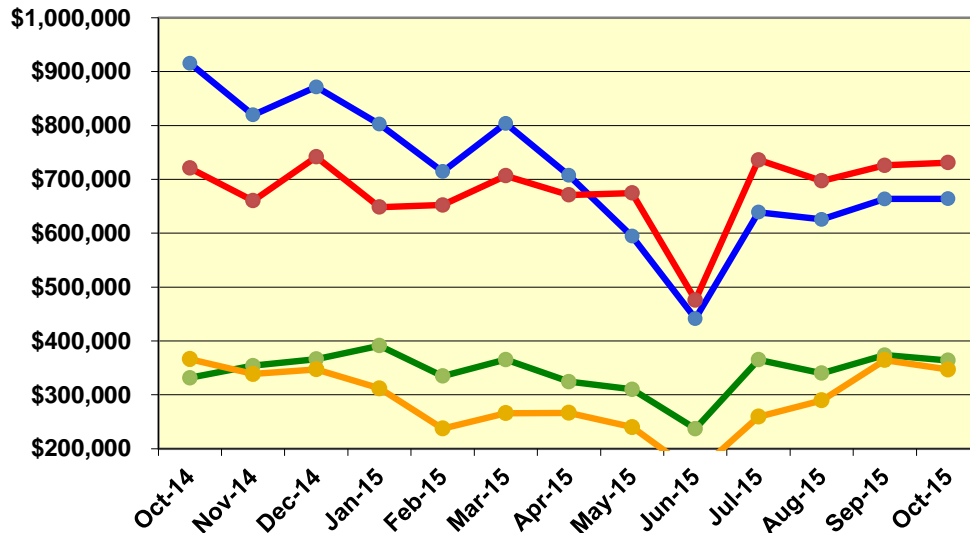
**Green Line**



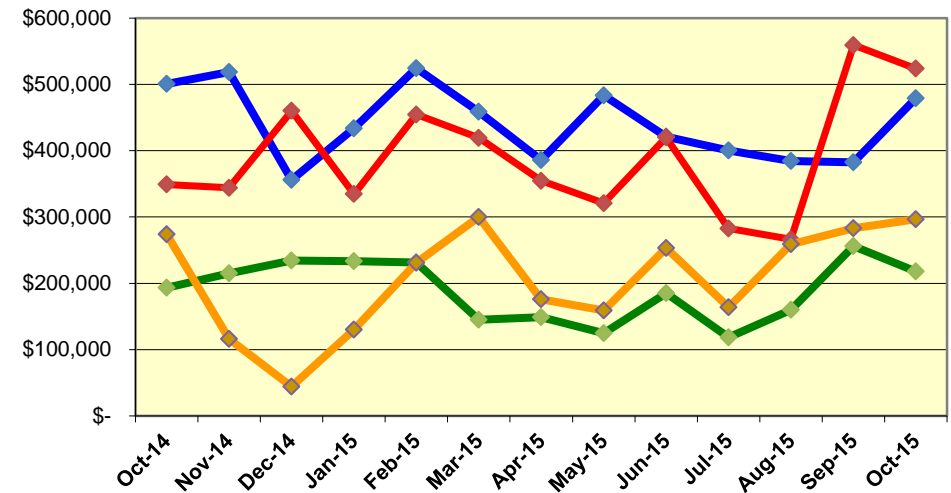
# Labor and Material Costs

## October 2014-2015

Labor Costs



Material Costs



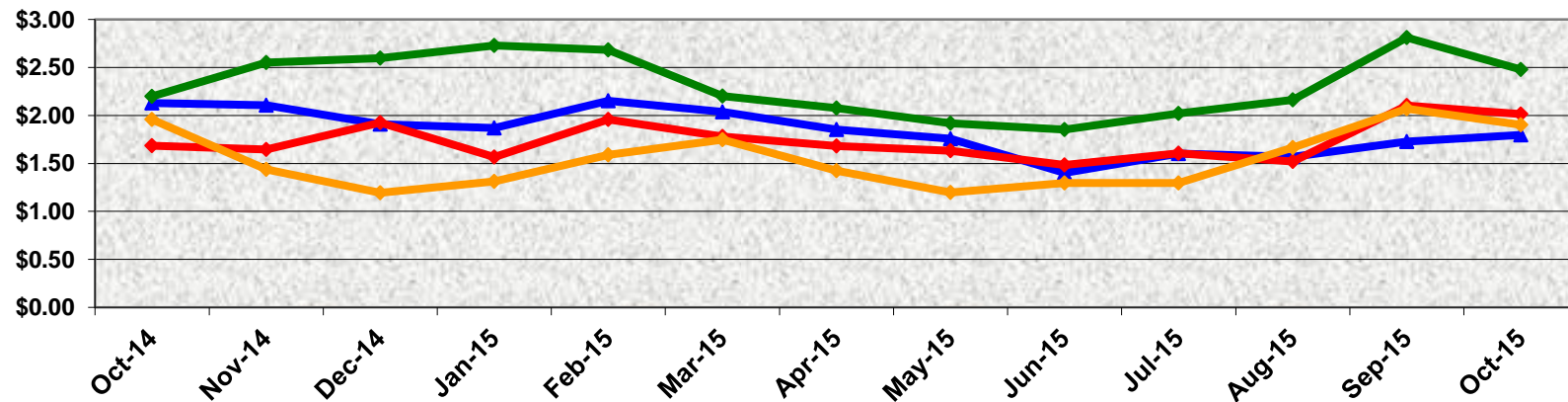
|                    | Oct-14       | Nov-14       | Dec-14       | Jan-15       | Feb-15       | Mar-15       | Apr-15       | May-15       | Jun-15*      | Jul-15       | Aug-15       | Sep-15       | Oct-15       |
|--------------------|--------------|--------------|--------------|--------------|--------------|--------------|--------------|--------------|--------------|--------------|--------------|--------------|--------------|
| <b>Labor Costs</b> |              |              |              |              |              |              |              |              |              |              |              |              |              |
| Blue/Expo Lines    | \$ 915,432   | \$ 819,497   | \$ 871,682   | \$ 802,256   | \$ 714,349   | \$ 803,757   | \$ 707,348   | \$ 594,550   | \$ 441,364   | \$ 638,967   | \$ 625,577   | \$ 663,752   | \$ 663,965   |
| Red/Purple Lines   | \$ 721,060   | \$ 660,321   | \$ 741,908   | \$ 648,538   | \$ 652,406   | \$ 706,794   | \$ 671,084   | \$ 674,681   | \$ 475,810   | \$ 736,269   | \$ 697,095   | \$ 726,107   | \$ 731,128   |
| Green Line         | \$ 331,661   | \$ 354,058   | \$ 366,422   | \$ 391,161   | \$ 334,919   | \$ 365,457   | \$ 324,550   | \$ 310,181   | \$ 236,931   | \$ 365,229   | \$ 340,115   | \$ 373,698   | \$ 363,868   |
| Gold Line          | \$ 366,248   | \$ 338,610   | \$ 347,182   | \$ 311,868   | \$ 237,438   | \$ 265,835   | \$ 266,529   | \$ 240,056   | \$ 154,498   | \$ 259,228   | \$ 289,571   | \$ 364,544   | \$ 347,072   |
| Totals             | \$ 2,334,400 | \$ 2,172,486 | \$ 2,327,193 | \$ 2,153,823 | \$ 1,939,112 | \$ 2,141,842 | \$ 1,969,511 | \$ 1,819,467 | \$ 1,308,603 | \$ 1,999,693 | \$ 1,952,358 | \$ 2,128,101 | \$ 2,106,033 |

|                  | <b>Material Costs</b> |              |              |              |              |              |              |              |              |            |              |              |              |
|------------------|-----------------------|--------------|--------------|--------------|--------------|--------------|--------------|--------------|--------------|------------|--------------|--------------|--------------|
| Blue/Expo Lines  | \$ 500,390            | \$ 518,334   | \$ 355,729   | \$ 433,347   | \$ 524,157   | \$ 458,588   | \$ 385,794   | \$ 483,368   | \$ 421,088   | \$ 400,315 | \$ 384,178   | \$ 382,274   | \$ 478,960   |
| Red/Purple Lines | \$ 349,031            | \$ 343,936   | \$ 460,076   | \$ 334,623   | \$ 454,326   | \$ 419,099   | \$ 354,492   | \$ 320,754   | \$ 420,042   | \$ 282,744 | \$ 266,405   | \$ 559,179   | \$ 523,558   |
| Green Line       | \$ 193,176            | \$ 214,902   | \$ 234,118   | \$ 233,318   | \$ 231,562   | \$ 144,927   | \$ 148,839   | \$ 125,054   | \$ 185,086   | \$ 118,559 | \$ 159,916   | \$ 256,185   | \$ 217,820   |
| Gold Line        | \$ 274,059            | \$ 116,179   | \$ 44,498    | \$ 130,036   | \$ 230,896   | \$ 300,170   | \$ 175,922   | \$ 159,016   | \$ 253,284   | \$ 163,954 | \$ 258,793   | \$ 282,958   | \$ 296,684   |
| Totals           | \$ 1,316,657          | \$ 1,193,351 | \$ 1,094,420 | \$ 1,131,324 | \$ 1,440,941 | \$ 1,322,783 | \$ 1,065,048 | \$ 1,088,194 | \$ 1,279,500 | \$ 965,571 | \$ 1,069,291 | \$ 1,480,596 | \$ 1,517,022 |

# Cost Per Mile October 2014-2015

| Cost per mile:   | Oct-14 | Nov-14 | Dec-14 | Jan-15 | Feb-15 | Mar-15 | Apr-15 | May-15 | Jun-15 | Jul-15 | Aug-15 | Sep-15 | Oct-15 | Average |
|------------------|--------|--------|--------|--------|--------|--------|--------|--------|--------|--------|--------|--------|--------|---------|
| Blue/Expo Lines  | \$2.13 | \$2.11 | \$1.91 | \$1.87 | \$2.15 | \$2.04 | \$1.85 | \$1.76 | \$1.40 | \$1.60 | \$1.57 | \$1.73 | \$1.80 | \$1.84  |
| Red/Purple Lines | \$1.68 | \$1.64 | \$1.92 | \$1.57 | \$1.96 | \$1.78 | \$1.68 | \$1.63 | \$1.48 | \$1.61 | \$1.52 | \$2.10 | \$2.02 | \$1.74  |
| Green Line       | \$2.20 | \$2.55 | \$2.60 | \$2.73 | \$2.68 | \$2.20 | \$2.08 | \$1.92 | \$1.85 | \$2.02 | \$2.16 | \$2.81 | \$2.48 | \$2.33  |
| Gold Line        | \$1.96 | \$1.44 | \$1.19 | \$1.31 | \$1.59 | \$1.75 | \$1.43 | \$1.20 | \$1.30 | \$1.30 | \$1.67 | \$2.07 | \$1.90 | \$1.55  |

Cost per Mile



Blue/Expo Lines

Red/Purple Lines

Green Line

Gold Line

# ATU Absences vs. Overtime

## October 2015

| ABSENCE TYPE and HOURS              | 3941 & 3947<br>Blue & Expo | 3942<br>Red  | 3943<br>Green | 3944<br>Gold | Total         |
|-------------------------------------|----------------------------|--------------|---------------|--------------|---------------|
| BER-BEREAVEMENT                     | -                          | -            | 48            | 40           | 88            |
| CTO-COMPENSATORY TIME OFF           | 233                        | 329          | 108           | 108          | 779           |
| CUT-EMPLOYEE LEAVES EARLY           | -                          | -            | 1             | -            | 1             |
| DSL-DISABILITY LEAVE/LONG           | 736                        | 1,000        | -             | 368          | 2,104         |
| EFH-EMG. FLOAT HOL.                 | -                          | 40           | 8             | 104          | 152           |
| ETO-EXCUSED TIME OFF                | 126                        | 31           | 4             | 22           | 182           |
| FMI-FAM IND INJURY                  | 32                         | 200          | -             | -            | 232           |
| FML-FAMILY CARE LEAVE               | 760                        | 192          | 115           | 248          | 1,315         |
| FMS-FAMILY LEAVE SICK               | 208                        | 34           | 16            | 100          | 358           |
| HLF-HOLIDAY FLOATING                | 544                        | 240          | 56            | 128          | 968           |
| II-INDUSTRIAL INJURY                | 168                        | -            | -             | -            | 168           |
| JUR-JURY DUTY                       | 32                         | 8            | 16            | -            | 56            |
| LC1-LABOR CODE 233                  | 227                        | 93           | 36            | 104          | 460           |
| LTI-OCCPIL/LONGTRM INJ LEAVE        | 176                        | 184          | -             | -            | 360           |
| MLN-MILITARY ABSENCE-UNPAID         | 8                          | 16           | -             | -            | 24            |
| RTO-REQUESTED TIME OFF-NO PAY       | 31                         | 8            | -             | -            | 39            |
| SCK-SICK PAY                        | 398                        | 182          | 69            | 200          | 848           |
| SCW-SICK WITHOUT PAY                | 96                         | 24           | 4             | -            | 124           |
| SUS-DISCIPLINARY SUSPENSION         | -                          | -            | 5             | -            | 5             |
| TAR-TARDY                           | 2                          | 1            | 3             | 0            | 6             |
| VAC-VACATION                        | 1,311                      | 1,624        | 386           | 528          | 3,849         |
| VAS-VACATION WHILE SICK             | -                          | 113          | -             | -            | 113           |
| TRAINING*                           | 880                        | 520          | 520           | 552          | 2,472         |
| <b>Total Absence Hours</b>          | <b>5,966</b>               | <b>4,839</b> | <b>1,394</b>  | <b>2,502</b> | <b>14,702</b> |
| ATU Number of Work Force (budget)   | 125                        | 104          | 46            | 48           | 323           |
| Full Work Force hours/month         | 21,663                     | 18,023       | 7,972         | 8,318        | 55,976        |
| <b>Absence as a % of Work Force</b> | <b>28%</b>                 | <b>27%</b>   | <b>17%</b>    | <b>30%</b>   | <b>26%</b>    |

| OVERTIME TYPE and HOURS              | 3941 & 3947<br>Blue & Expo | 3942<br>Red  | 3943<br>Green | 3944<br>Gold | Total         |
|--------------------------------------|----------------------------|--------------|---------------|--------------|---------------|
| CTB-COMPENSATORY TIME TO BANK        | 170                        | 203          | 117           | 48           | 537           |
| OTP-PREM OVERTIME                    | 3,910                      | 5,223        | 1,555         | 678          | 11,366        |
| PHP-PHYSICAL EXAM OT                 | 4                          | -            | -             | -            | 4             |
| WLO-Worked Lunch Overtime            | 158                        | 151          | 87            | 42           | 437           |
| <b>Total Overtime Hours</b>          | <b>4,242</b>               | <b>5,577</b> | <b>1,758</b>  | <b>767</b>   | <b>12,345</b> |
| <b>Overtime as a % of Work Force</b> | <b>20%</b>                 | <b>31%</b>   | <b>22%</b>    | <b>9%</b>    | <b>22%</b>    |

\*Training hours captured by Instruction Department are added to Absences report.

Note: Overtime also covers other required activities, including Training, Component Overhaul, and Special Events.



**Metro**

# RFS Instruction Department Activities

## October 2015

### Training classes completed during the month of October 2015

| Description   | Course Hours | Student Count | Training Hours |
|---|--------------|---------------|----------------|
| <b>Blue &amp; Expo Line Training - (P865/2020 &amp; P2000 LRV):</b> |              |               |                |
| RFS 2-WEEK RAIL INTRODUCTION  | 80           | 4             | 320            |
| RFS PROTRAN1 TRAINING   | 1            | 16            | 16             |
| WAYSIDE WORKER PROTECTION   | 4            | 16            | 64             |
| RFS SIEMENS 2000 PROPULSION   | 80           | 6             | 480            |
| <b>Total Blue Line Training (Hours):</b>                            |              |               | <b>880</b>     |
| <b>Red Line Training (Breda A650 HRV):</b>                          |              |               |                |
| RFS BRED A650 PROPULSION GE   | 40           | 5             | 200            |
| RFS BRED A650 MTO SYSTEMS   | 24           | 5             | 120            |
| RFS BRED A650 VEHICLE INTRO   | 40           | 5             | 200            |
| <b>Total Red Line Training (Hours):</b>                             |              |               | <b>520</b>     |
| <b>Gold Line Training (P2550 LRVs):</b>                             |              |               |                |
| RFS 2010-PETER-BRANDT HIGH-RAIL TRUCK                               | 8            | 1             | 8              |
| RFS 2-WEEK RAIL INTRODUCTION  | 80           | 2             | 160            |
| RFS ANSALDOBRED A 2550 CARBODY                                      | 16           | 4             | 64             |
| RFS ANSALDOBRED A 2550 VEHICLE SYSTEMS                              | 40           | 4             | 160            |
| RFS ANSALDOBRED A 2550 PANTOGRAPH/HIGH VOLTAGE DIST.                | 40           | 4             | 160            |
| <b>Total Gold Line Training (Hours):</b>                            |              |               | <b>552</b>     |
| <b>Green Line Training (P2000 LRVs):</b>                            |              |               |                |
| RFS SIEMENS 2000 VEHICLE SYSTEMS                                    | 48           | 5             | 240            |
| RFS 2-WEEK RAIL INTRODUCTION  | 80           | 1             | 80             |
| RFS SIEMENS 2000 PROPULSION   | 40           | 5             | 200            |
| <b>Total Green Line Training (Hours):</b>                           |              |               | <b>520</b>     |

**Total RFS Instruction for the month of October 2015 (Hours): 2,472**

| Other Instruction Activities                                 | C   | A  | TS  | Total |
|--|-----|----|-----|-------|
| A650 Curriculum, Administrative, and Technical Support       | 16  | 8  | 32  | 56    |
| P865/P2020 Curriculum, Administrative, and Technical Support | 20  | 20 | 120 | 160   |
| P2000 Curriculum, Administrative, and Technical Support      | 88  | 32 | 56  | 176   |
| P2550 Curriculum, Administrative, and Technical Support      | 24  | 8  | 8   | 40    |
| P3010 Curriculum, Administrative, and Technical Support      | 192 | 32 | 176 | 400   |

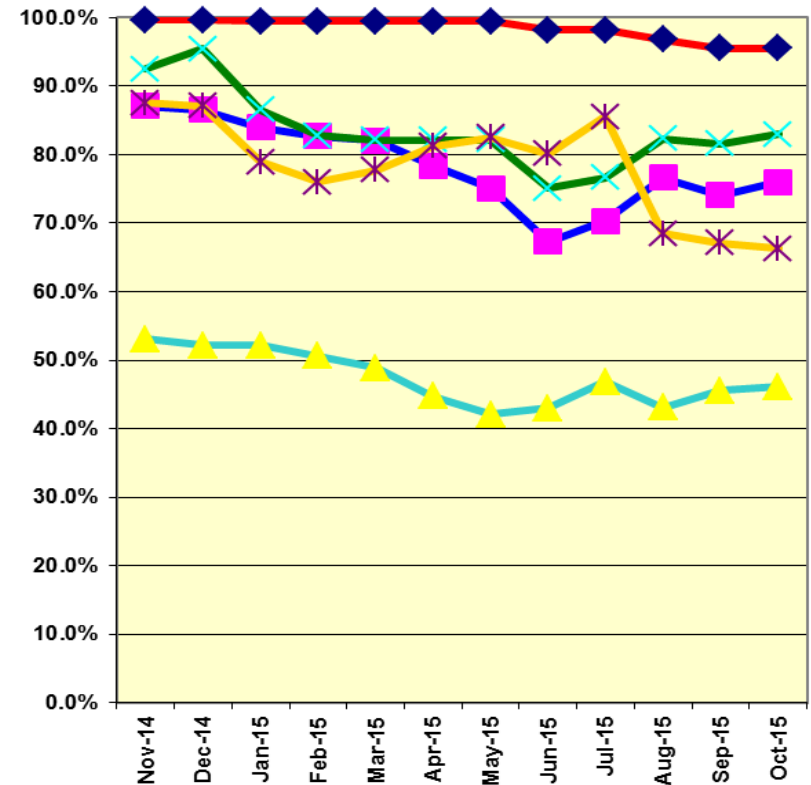
**Total Other Instruction Activities 832**

**Core Vehicle Training Completed: BLUE RED GREEN GOLD**

Percentage of core vehicle training complete: **76.0% 95.5% 83.0% 66.3%**  
 Siemens P2000 training complete: **46.1% N/A N/A N/A**

Average Specialist Rail Experience Level in Years: **11.0 11.8 9.5 6.7**

### Core Training Completed



Variations caused by new hires, employee transfers, & training completed



**Metro**