



Rail Fleet Services Monthly Report July 2016

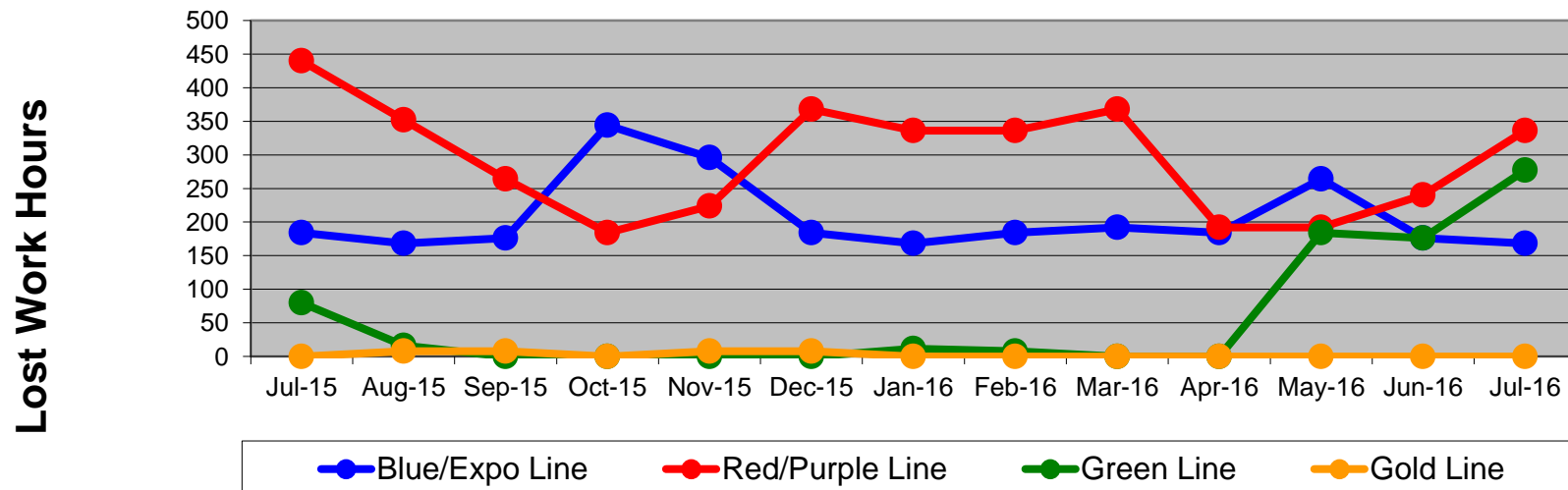
Table of Contents

•	Safety & Cleanliness		
	- Industrial Injuries	Page	3
	- Rail Vehicle Accidents & Major Incidents	Page	4
	- Car Cleanliness	Page	5
•	Customer Service		
	- Service Delivery – AM/PM Pull-Outs	Page	6
	- Vehicle Utilization – Red Line	Page	7
	- Vehicle Utilization – Blue Line & Expo Line	Page	8
	- Vehicle Utilization – Green Line & Gold Line	Page	9
	- All Train Delay Incidents	Page	10
	- Mean Miles Between Failures (Major)	Page	11
	- Mileage Between Data Range (by month)	Page	12
•	Business Processes		
	- Top Incident Categories	Page	13
	- Major Incidents	Page	14
	- Preventive Maintenance Compliance	Page	15
	- RFS Leader Wrench Turning	Page	16
•	Finance		
	- Vandalism & Graffiti Costs	Page	17
	- Vandalism & Graffiti Pictures	Page	18
	- Labor & Material Costs	Page	19
	- Cost per mile	Page	20
	- Absence vs. Overtime	Page	21
•	Growth		
	- RFS Instruction Department Activities	Page	22-23

Industrial Injuries – Lost Work Hours July 2015-2016

	Jul-15	Aug-15	Sep-15	Oct-15	Nov-15	Dec-15	Jan-16	Feb-16	Mar-16	Apr-16	May-16	Jun-16	Jul-16	13-Month Period
Blue/Expo Line	184	168	176	344	296	184	168	184	192	184	264	176	168	2,688
Red/Purple Line	440	352	264	184	224	368	336	336	368	192	192	240	336	3,832
Green Line	80	16	0	0	0	0	12	8	0	0	184	176	277	753
Gold Line	0	8	8	0	8	8	0	0	0	0	0	0	0	32
Totals	704	544	448	528	528	560	516	528	560	376	640	592	781	7,305

Industrial Injuries (lost work hours)



Rail Vehicle Accidents & Major Incidents

July 2015-2016

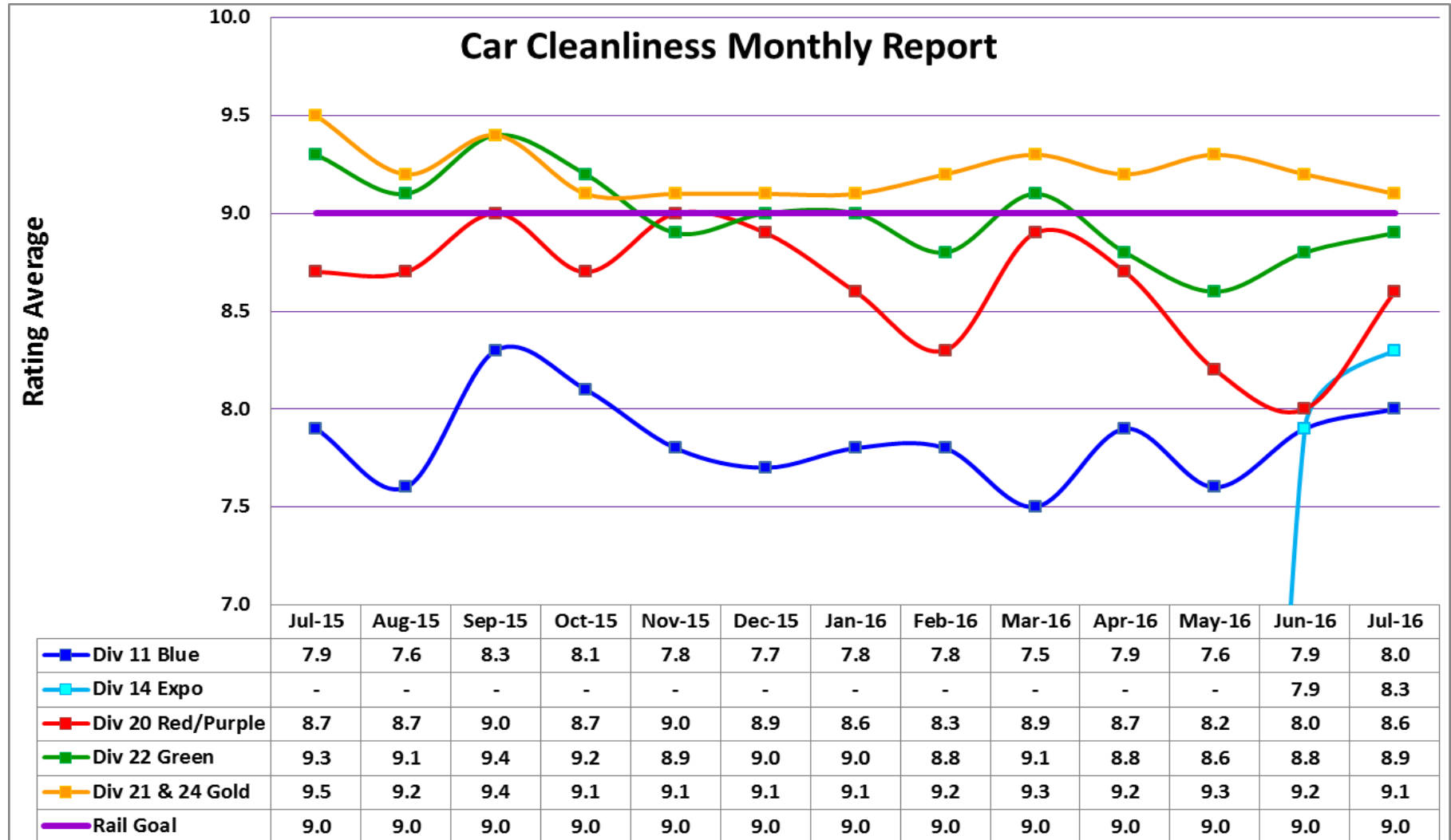
Repair Costs	Jul-15	Aug-15	Sep-15	Oct-15	Nov-15	Dec-15	Jan-16	Feb-16	Mar-16	Apr-16	May-16	Jun-16	Jul-16	13-Month Period
Blue Line	\$5,716	\$1,971	\$2,838	\$40,969	\$65,454	\$17,160	\$4,570	\$7,379	\$2,037	\$1,232	\$513	\$0	\$0	\$149,839
Expo Line	\$0	\$0	\$0	\$0	\$0	\$0	\$0	\$0	\$0	\$0	\$0	\$0	\$576	\$576
Red/Purple Line	\$0	\$0	\$0	\$0	\$0	\$0	\$0	\$0	\$0	\$1,284	\$0	\$1,932	\$840	\$4,056
Green Line	\$0	\$5,333	\$0	\$1,205	\$0	\$23	\$0	\$0	\$0	\$0	\$0	\$0	\$0	\$6,561
Gold Line	\$8,204	\$2,611	\$0	\$1,074	\$1,547	\$1,547	\$0	\$53	\$1,487	\$4,646	\$0	\$19,451	\$564	\$41,184
Totals	\$13,920	\$9,915	\$2,838	\$43,248	\$67,001	\$18,730	\$4,570	\$7,432	\$3,524	\$7,162	\$513	\$21,383	\$1,980	\$202,216

Rail Vehicle Accident Costs - July 2016				
Date	Incident #	Problem Code	Incident Description	Repair Cost
Metro Expo Line				
7/10/16	2751280	Train vs. Pedestrian	A 10-72 was reported at Pico station, Track 2 SB.	\$ 576
Metro Expo Line Total				\$ 576
Metro Gold Line				
7/9/16	2751062	Train vs. Object	A 10-71 was reported at Heritage Square Station.	\$ 564
Metro Gold Line Total				\$ 564
Metro Red Line				
7/3/16	2748874	Derailment	A 10-75 was reported. Operator accidentally coupled to a Dead Tow and pulled, derailing it.	\$ 840
Metro Red Line Total				\$ 840
Grand Total				\$ 1,980
10-71 = Train vs. Object/ 10-72 = Train vs. Pedestrian/ 10-73 = Train vs. Vehicle/ 10-74 = Train vs. MTA Vehicle/ 10-75 = Derailment				

Note: Repair costs are only the expenses captured during the time period of the report. Actual costs may be significantly higher, if repairs are spread out over several months.

Rail Vehicle – Car Cleanliness

July 2015-2016



Service Delivery July 2016

July 2016 - Service Delivery

Blue Line Fleet Size: 69

<u>Pull Out</u>	<u>Average Vehicles Required</u>	<u>Average Available</u>	<u>% Up (Down)</u>
Weekday:	60	58	97%
Weekend:	26	39	150%

Monthly Mileage: 428,908

Expo Line Fleet Size: 39

<u>Pull Out</u>	<u>Average Vehicles Required</u>	<u>Average Available</u>	<u>% Up (Down)</u>
Weekday:	24	26	108%
Weekend:	24	26	108%

Monthly Mileage: 223,938

Red/Purple Line Fleet Size: 104

<u>Pull Out</u>	<u>Average Vehicles Required</u>	<u>Average Available</u>	<u>% Up (Down)</u>
Weekday:	74	78	105%
Weekend:	54	62	115%

Monthly Mileage: 593,910

Green Line Fleet Size: 29

<u>Pull Out</u>	<u>Average Vehicles Required</u>	<u>Average Available</u>	<u>% Up (Down)</u>
Weekday:	22	22	100%
Weekend:	14	17	121%

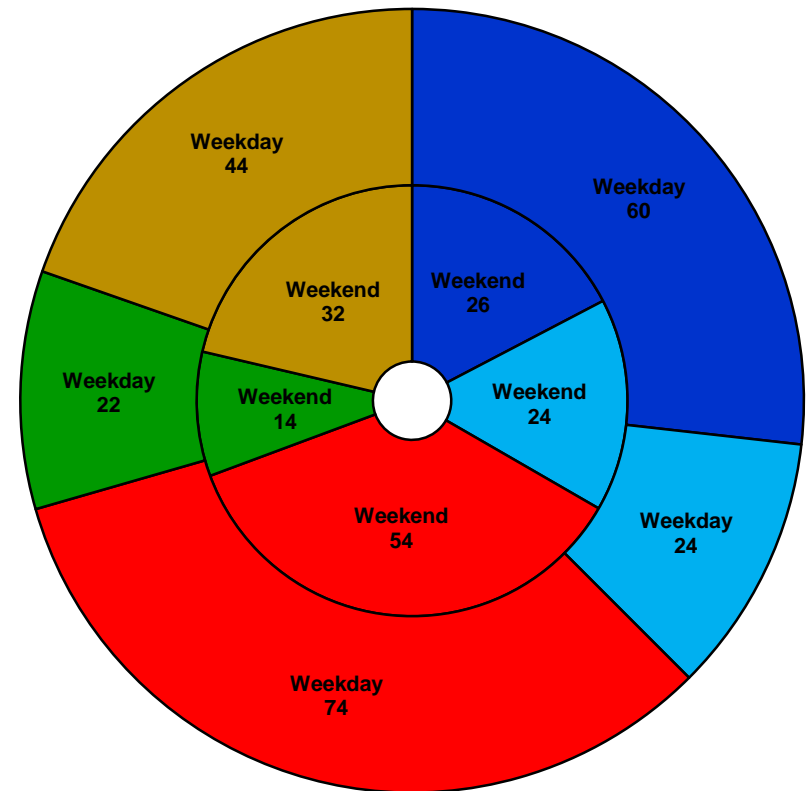
Monthly Mileage: 228,371

Gold Line Fleet Size: 60

<u>Pull Out</u>	<u>Average Vehicles Required</u>	<u>Average Available</u>	<u>% Up (Down)</u>
Weekday (Div 21):	10	10	100%
Weekday (Div 24):	34	38	112%
Weekend (Div 24):	32	38	119%

***Monthly Mileage: 481,767**

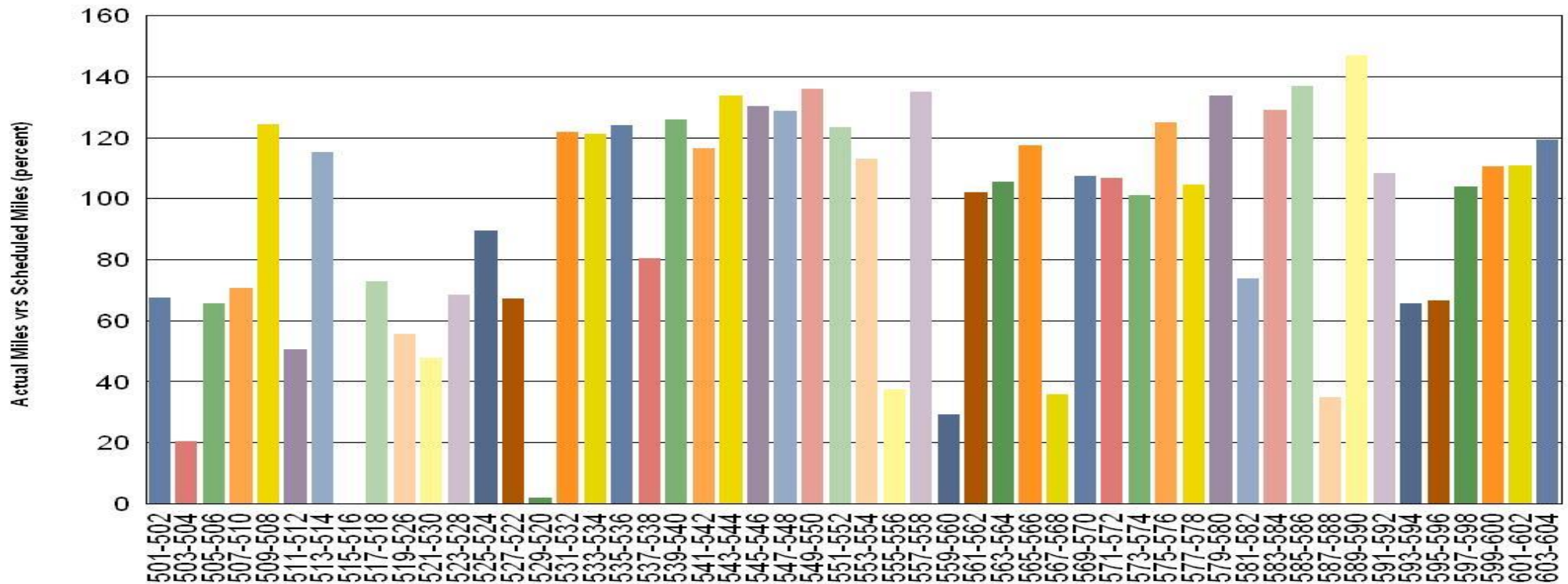
* Gold Line monthly mileage includes Division 21 and 24.



■ Blue Line ■ Expo Line ■ Red/Purple Line ■ Green Line ■ Gold Line

Vehicle Utilization July 2016

Metro Red/Purple Line (104 Cars)



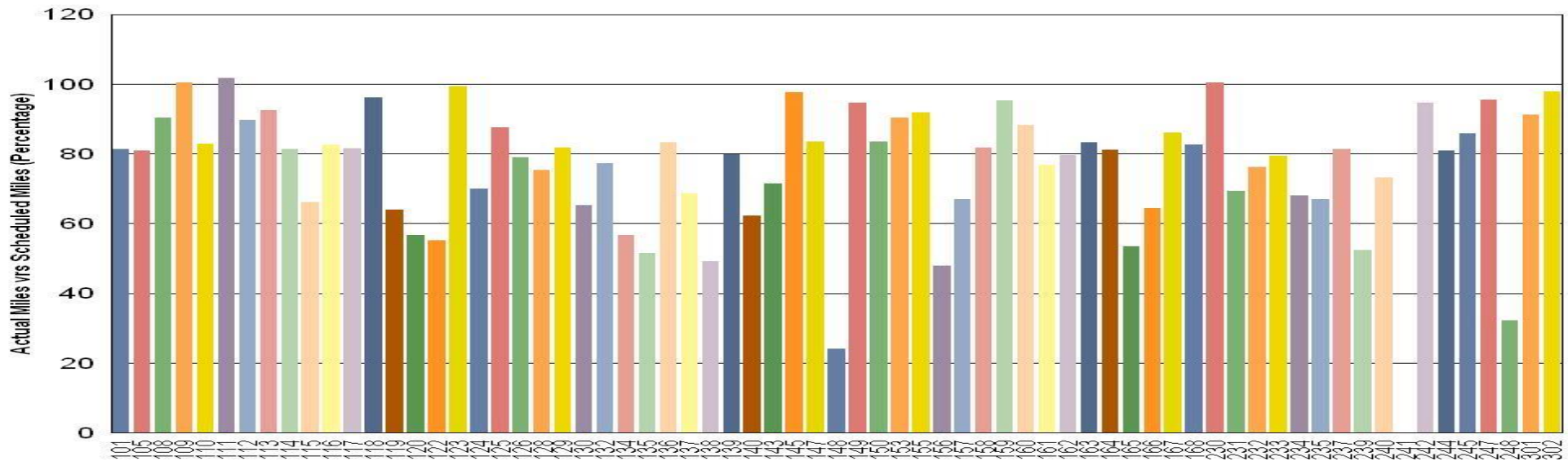
Red/Purple Line:

The following cars were out of service due to:

- Car # 503-504 – Propulsion Problem
- Car # 515-516 – Floor Replacement Project
- Car # 529-520 – Pending for Blower Motors and Windshield
- Car # 555-556 – Propulsion Problem: shoot through
- Car # 559-560 – Propulsion Problem: shoot through
- Car # 567-568 – Component Overhaul Campaign
- Car # 587-588 – Component Overhaul Campaign

Vehicle Utilization July 2016

Metro Blue Line (69 Cars)



Blue/Expo Line: The following cars were out of service due to:

Car # 148 – Paint and Body Floor Repair and Running Repair

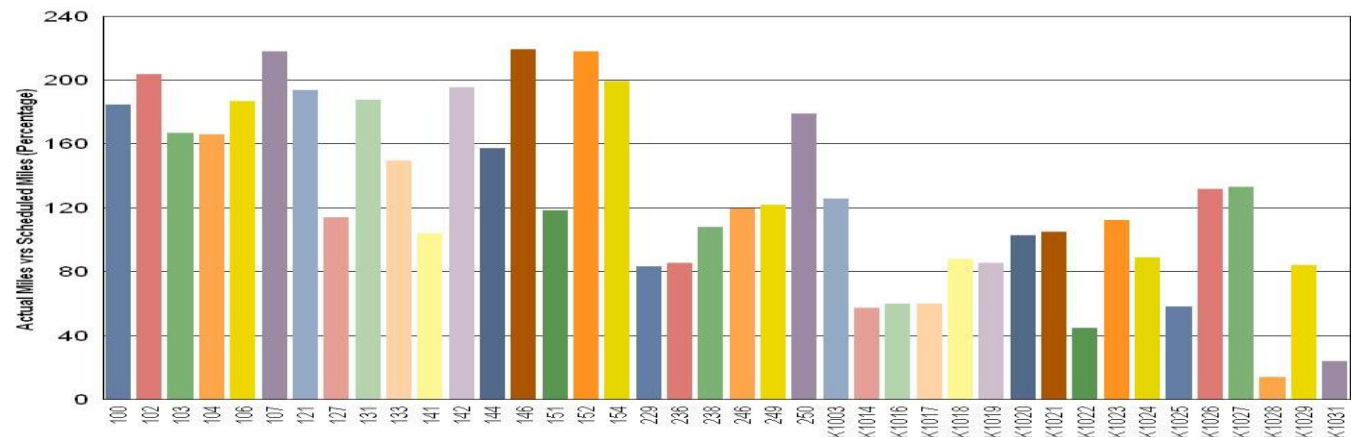
Car # 241 – Truck work, Overhaul and Parts Issues

Car # 248 – Truck Overhaul and Paint & Body Repair

Expo Line: The following cars were out of service due to:

Car # K1028 & K1031 are new to the fleet and were put into service at the end of July.

Metro Expo Line (39 Cars)



Note: Percentage includes an average 4% mileage deduction for yard mileage and vehicle testing.

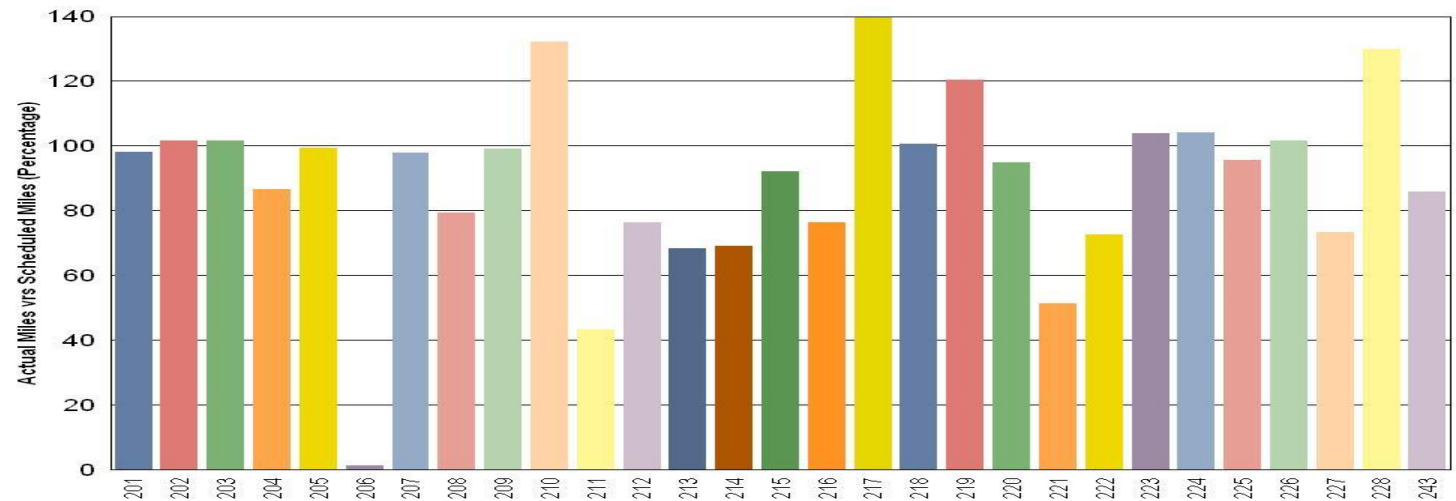
Vehicle Utilization July 2016

Green Line:

The following car was out of service due to:

Car # 206 - EMI level 2
(Engineering hold)

Metro Green Line (29 Cars)

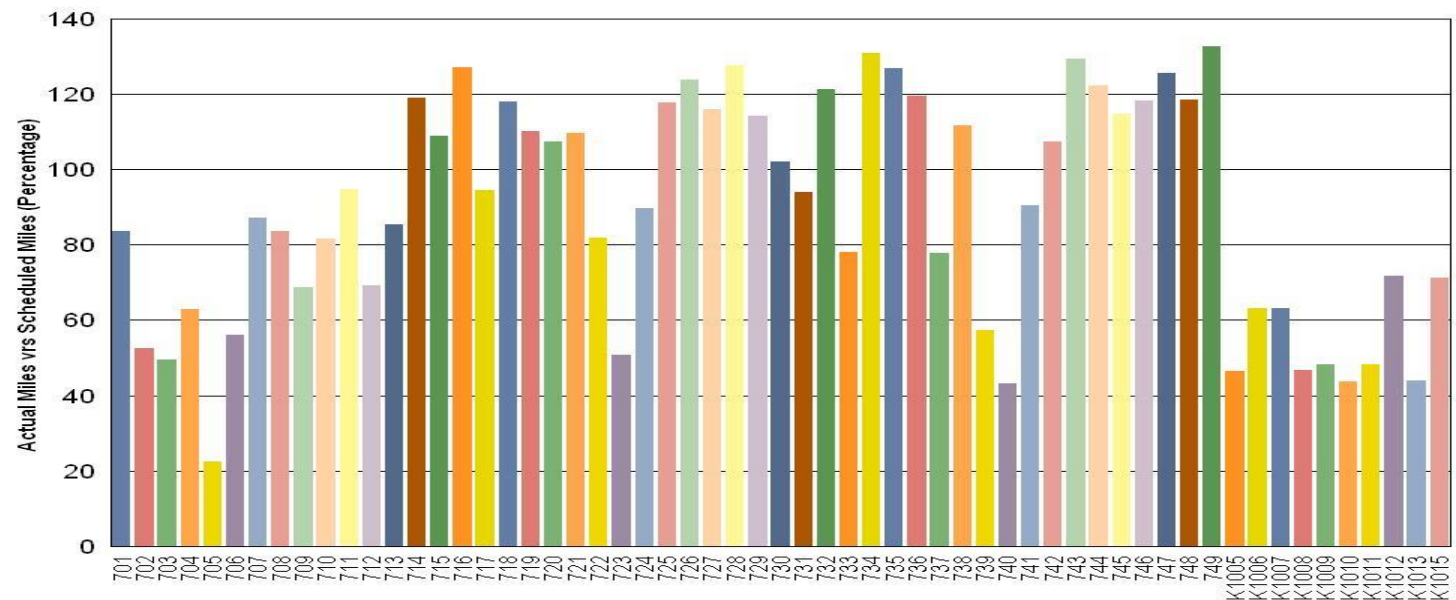


Gold Line:

The following car was out of service due to:

Car # 705 - High Voltage Cable Replacement due to damage

Metro Gold Line (60 Cars)

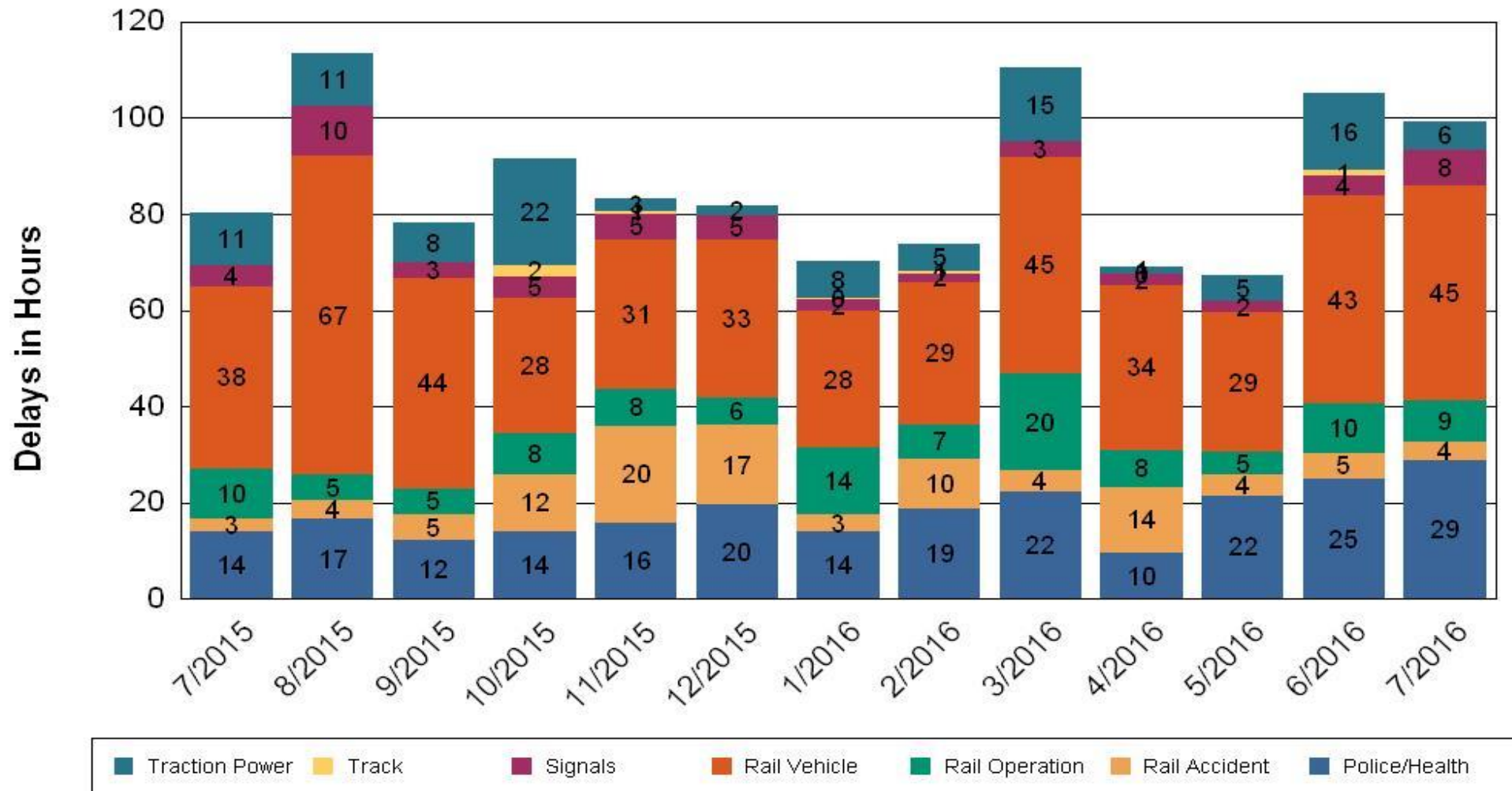


•Percentage includes an average 4% mileage deduction for yard mileage and vehicle testing.

All Train Delays (Hours) July 2015-2016

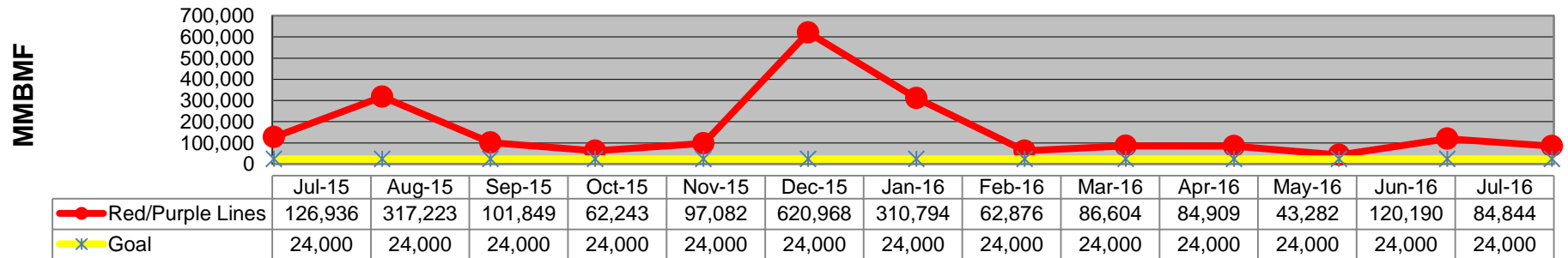
All Train Delays

Totals Include the delay to all trains involved (not just the primary incident)

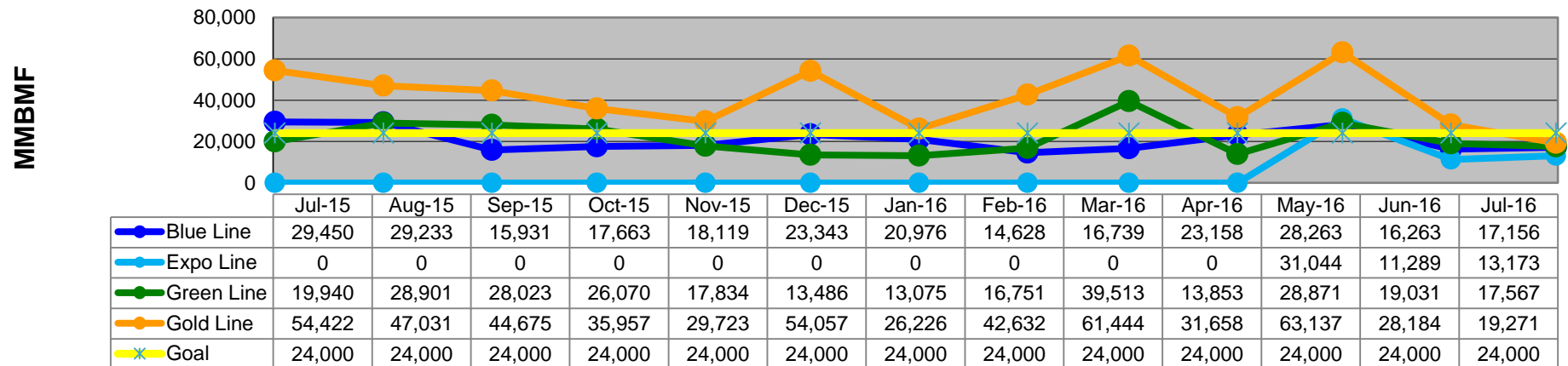


Mean Miles Between Failures (Major) July 2015-2016

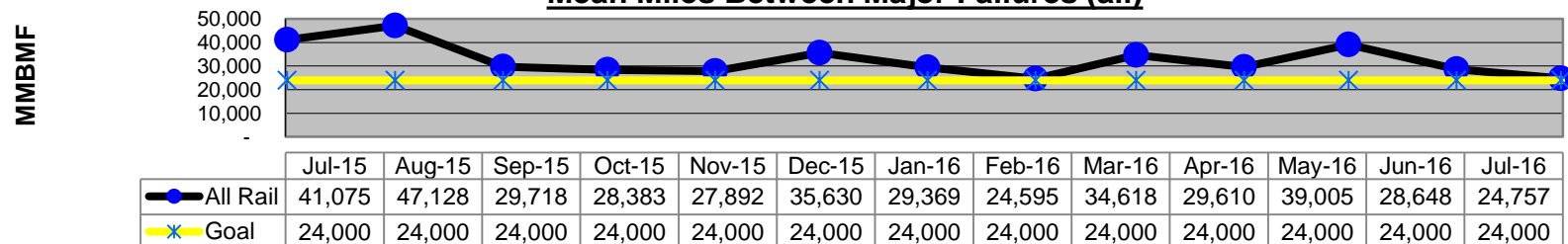
Mean Miles Between Major Failures - Heavy Rail



Mean Miles Between Major Failures - Light Rail



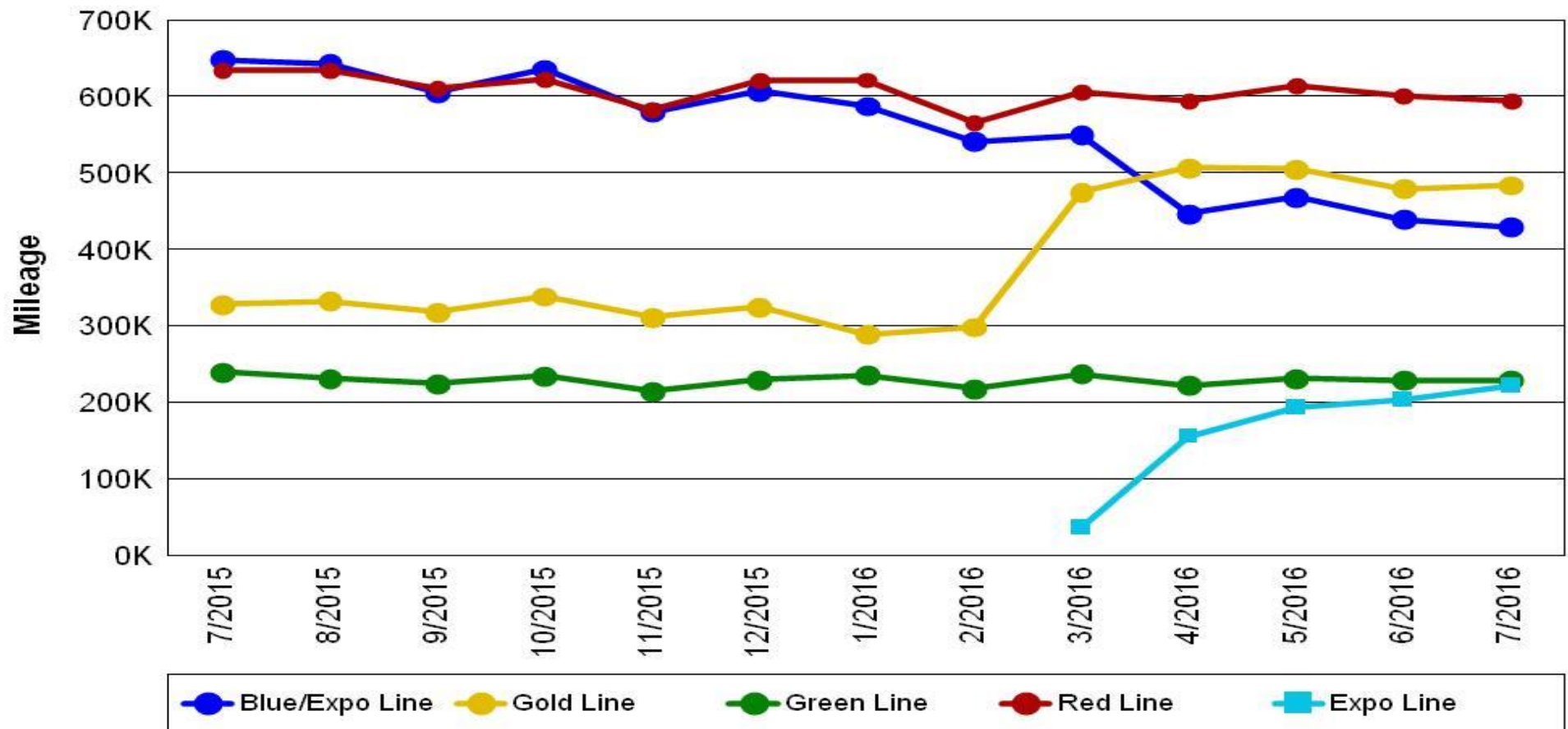
Mean Miles Between Major Failures (all)



Mileage Between Data Range (by month)

July 2015-2016

Rail Division Monthly Mileage



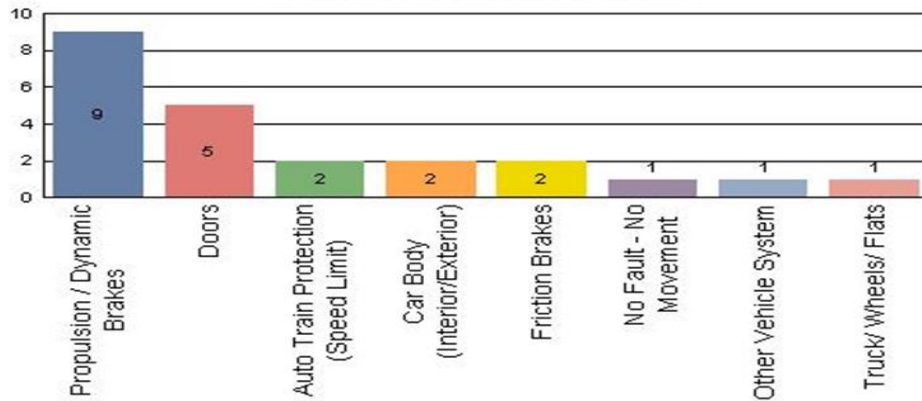
Notes:

- ❖ Gold Line increase in mileage is due to the open of the Foothill extension, which includes stations further apart and faster average running speeds.
- ❖ With the opening of Division 14 in Santa Monica, the Expo Line mileage is now being reported separately from the Blue Line.

Top Incident Categories July 2016

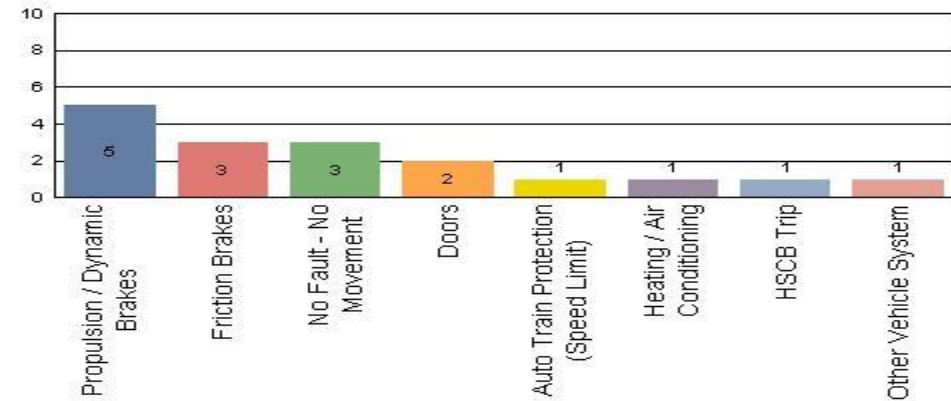
Metro Blue Line (Div 11)

Top Incident Categories



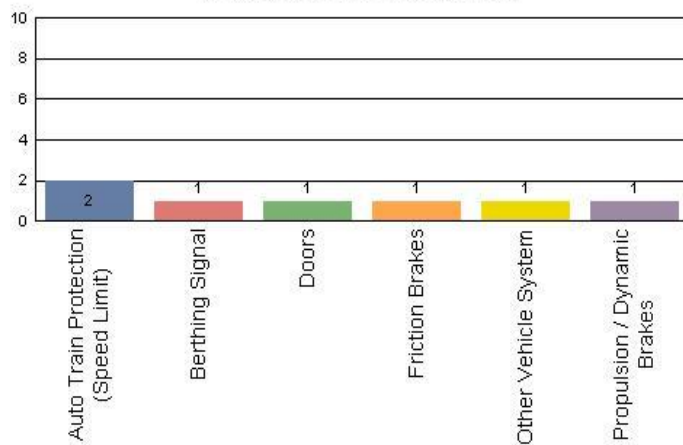
Metro Expo Line (Div 14)

Top Incident Categories



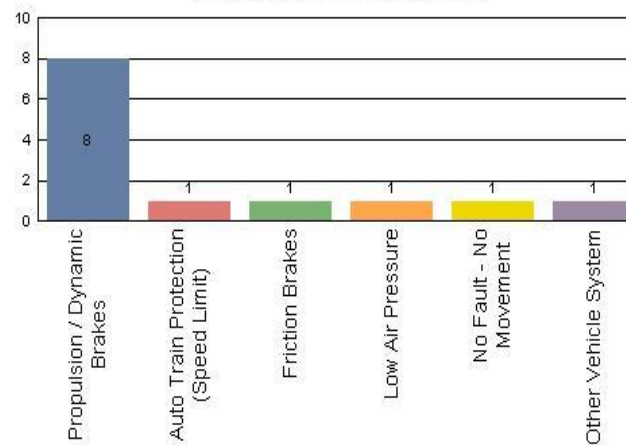
Metro Red/Purple Line (Div 20)

Top Incident Categories



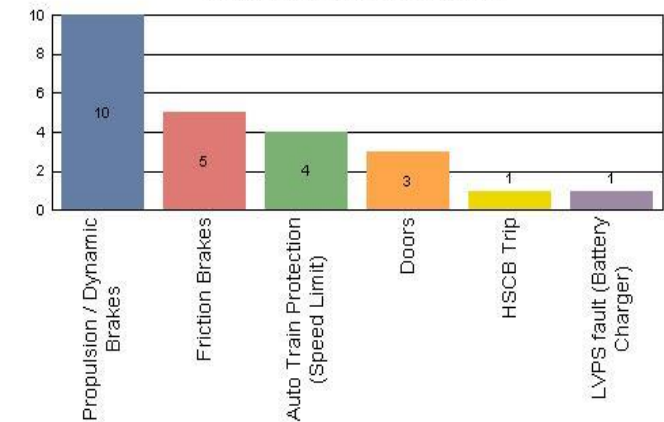
Metro Green Line (Div 22)

Top Incident Categories



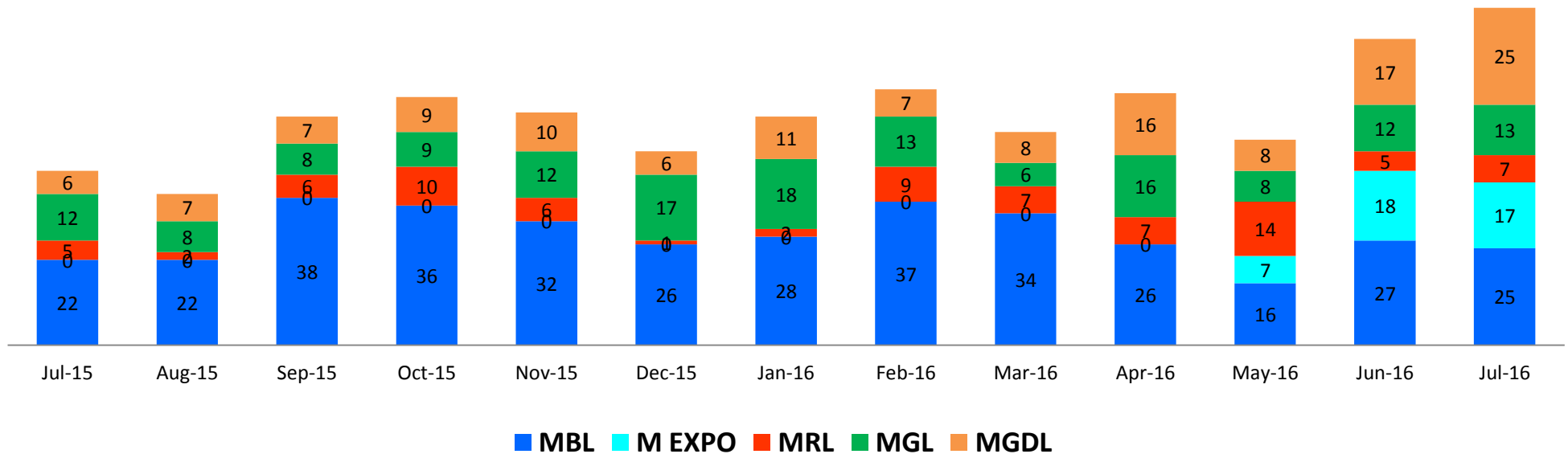
Metro Gold Line (Div 21 & Div 24)

Top Incident Categories



Major Incidents July 2015-2016

Numbers of Major System Failures (by Line)



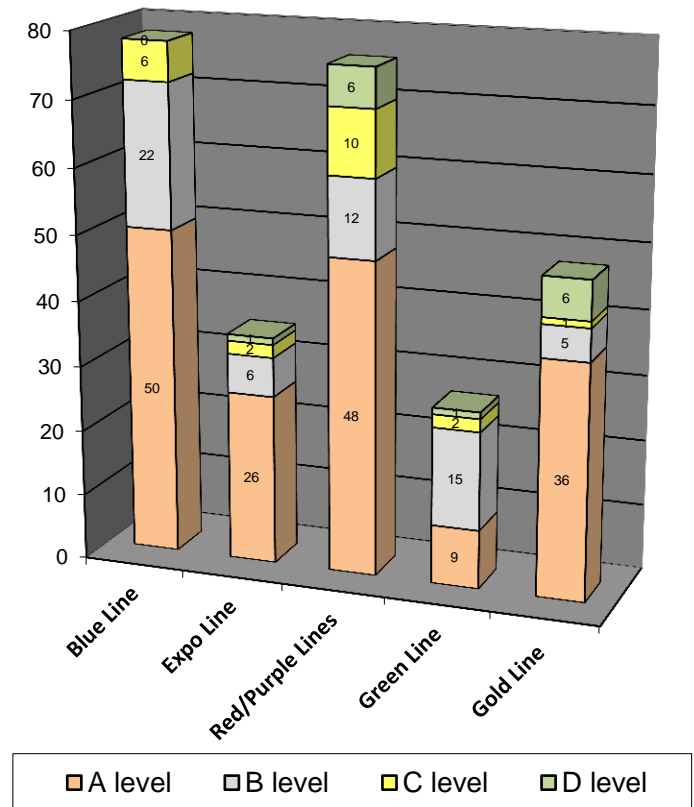
Preventive Maintenance Compliance

July 2015-2016

PM Compliance	Jul-15	Aug-15	Sep-15	Oct-15	Nov-15	Dec-15	Jan-16	Feb-16	Mar-16	Apr-16	May-16	Jun-16	Jul-16
Blue Line	100%	100%	100%	100%	100%	100%	100%	100%	100%	100%	100%	100%	100%
Expo Line	0%	0%	0%	0%	0%	0%	0%	0%	0%	0%	100%	100%	100%
Red/Purple Lines	100%	100%	100%	100%	100%	100%	100%	100%	100%	100%	100%	100%	100%
Green Line	100%	100%	100%	100%	93%	97%	97%	100%	100%	100%	93%	100%	100%
Gold Line	100%	100%	100%	94%	100%	100%	100%	100%	100%	100%	100%	100%	100%

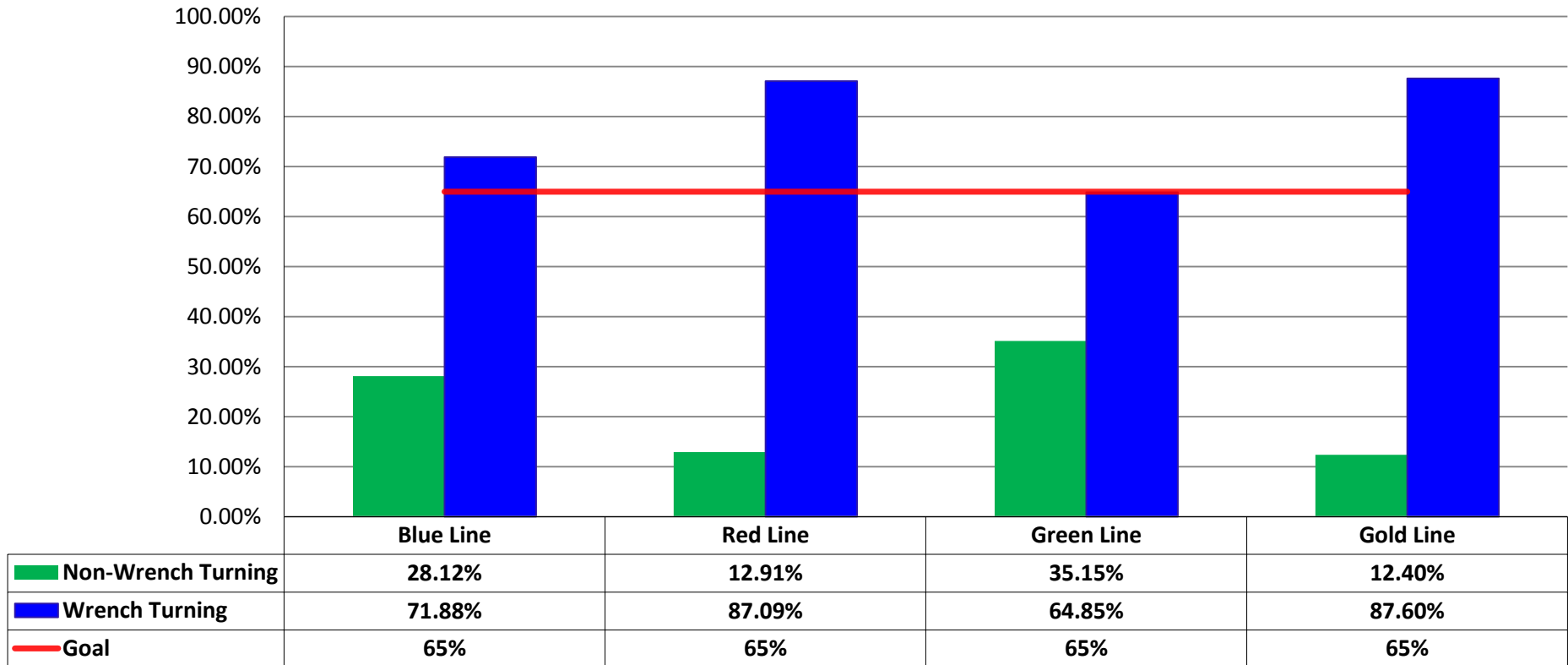
Number of Preventive Maintenance Inspections - July 2016					
Line	A level	B level	C level	D level	Totals
Blue Line	50	22	6	0	78
Expo Line	26	6	2	1	35
Red/Purple Lines	48	12	10	6	76
Green Line	9	15	2	1	27
Gold Line	36	5	1	6	48
Totals:	169	60	21	14	264

Explanation of PM Inspection levels		Miles			
Line	Type	A level	B level	C level	D level
Blue/Expo Lines	P865/P2020	5,000	15,000	30,000	60,000
Blue/Expo Lines	P2000	7,500	22,500	45,000	90,000
Red/Purple Lines	A650	7,500	22,500	45,000	90,000
Green Line	P2000	7,500	22,500	45,000	90,000
Gold Line	P2550	10,000	30,000	60,000	120,000
Gold/Expo Lines	P3010	10,000	30,000	60,000	120,000



RFS Leader Wrench Turning July 2016

RFS - Leader Wrench Turning July 2016



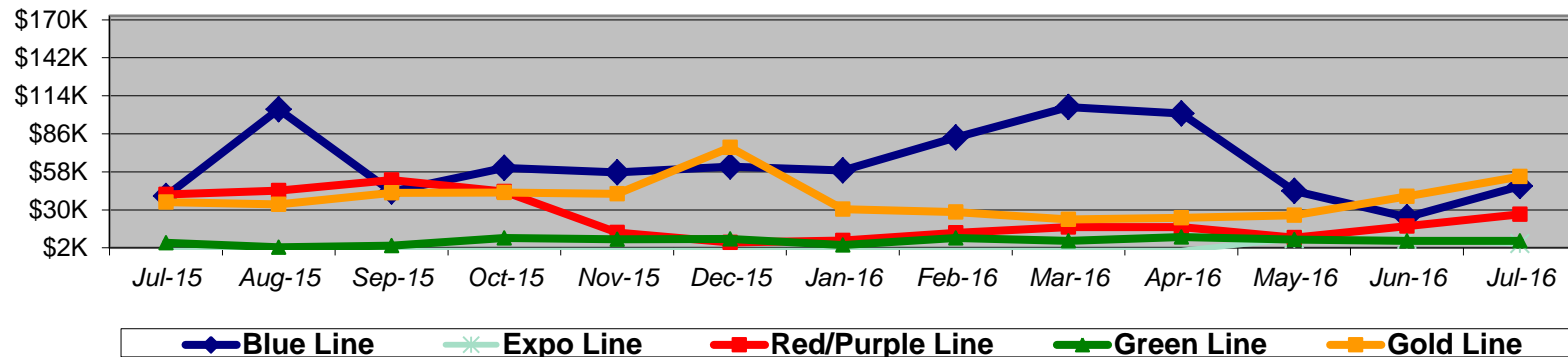
Notes: Labor hours contributed by Maint Specialist Leader, Rail Body/Paint Repair Leader, and Maint Specialist Temporary Leader

Vandalism & Graffiti Report

July 2015-2016

Graffiti Costs

	Jul-15	Aug-15	Sep-15	Oct-15	Nov-15	Dec-15	Jan-16	Feb-16	Mar-16	Apr-16	May-16	Jun-16	Jul-16	13-Month Period
Blue Line	\$40K	\$104K	\$43K	\$61K	\$58K	\$62K	\$59K	\$83K	\$106K	\$101K	\$44K	\$24K	\$48K	\$833K
Expo Line	\$K	\$K	\$K	\$K	\$K	\$K	\$K	\$K	\$K	\$K	\$9K	\$8K	\$5K	\$22K
Red/Purple Line	\$41K	\$44K	\$52K	\$43K	\$13K	\$6K	\$7K	\$13K	\$17K	\$17K	\$9K	\$18K	\$27K	\$310K
Green Line	\$6K	\$2K	\$4K	\$9K	\$8K	\$9K	\$4K	\$9K	\$7K	\$10K	\$8K	\$7K	\$7K	\$91K
Gold Line	\$36K	\$34K	\$42K	\$43K	\$42K	\$76K	\$30K	\$28K	\$23K	\$24K	\$26K	\$40K	\$54K	\$499K
Totals:	\$123K	\$185K	\$142K	\$156K	\$121K	\$152K	\$101K	\$134K	\$153K	\$153K	\$96K	\$98K	\$141K	\$1,754K



July 2016 Vandalism & Graffiti - All Rail				
	Qty	Labor	Materials	Totals
Windows Replaced	133	\$ 17,325	\$ 22,244	\$ 39,569
Vandal Shields Replaced	1,009	\$ 27,951	\$ 12,324	\$ 40,275
Seats Cleaned	344	\$ 2,229	\$ 168	\$ 2,397
Seats Inserts Replaced	130	\$ 4,901	\$ 4,475	\$ 9,376
Graffiti Removal - Other	1,170	\$ 37,170	\$ 6,946	\$ 44,116
Repainting Panels	144	\$ 5,023	\$ 90	\$ 5,113
Totals	2,930	\$ 94,599	\$ 46,247	\$ 140,846

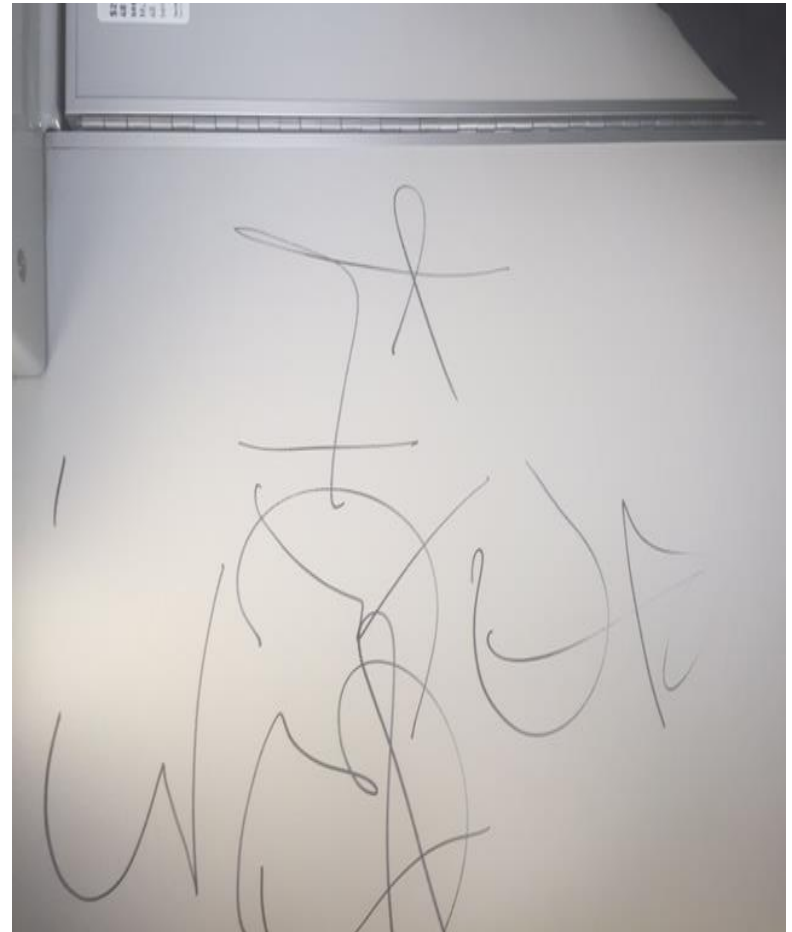
Vandalism & Graffiti Pictures

July 2016

Blue Line



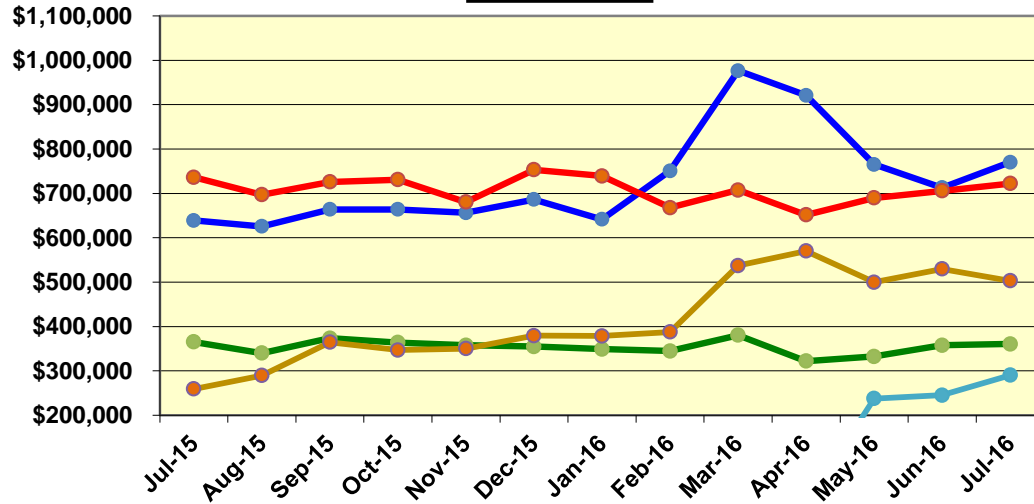
Gold Line



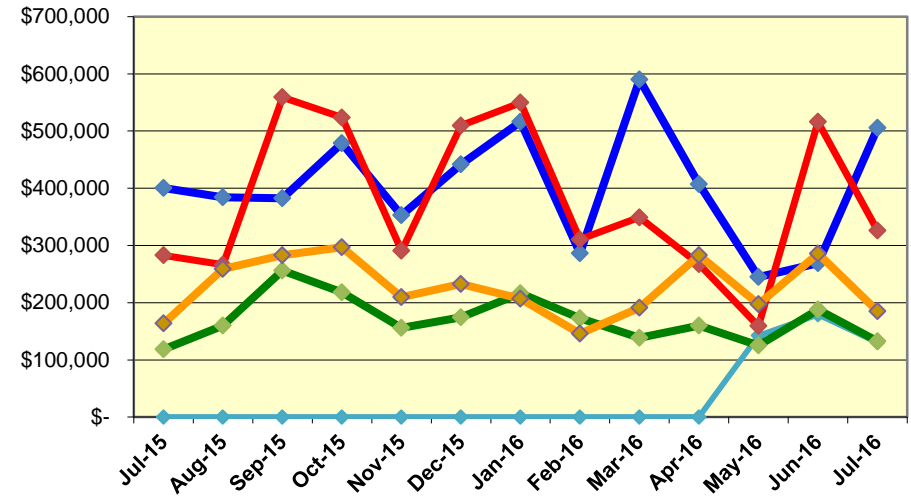
Labor and Material Costs

July 2015-2016

Labor Costs



Material Costs



	Jul-15	Aug-15	Sep-15	Oct-15	Nov-15	Dec-15	Jan-16	Feb-16	Mar-16	Apr-16	May-16	Jun-16	Jul-16
Labor Costs													
Blue Line	\$ 638,967	\$ 625,577	\$ 663,752	\$ 663,965	\$ 656,195	\$ 686,227	\$ 641,613	\$ 750,961	\$ 976,568	\$ 920,945	\$ 765,108	\$ 712,774	\$ 770,143
Expo Line	\$ -	\$ -	\$ -	\$ -	\$ -	\$ -	\$ -	\$ -	\$ -	\$ -	\$ 237,630	\$ 245,339	\$ 290,199
Red/Purple Lines	\$ 736,269	\$ 697,095	\$ 726,107	\$ 731,128	\$ 680,629	\$ 753,216	\$ 739,336	\$ 667,772	\$ 707,560	\$ 651,771	\$ 689,764	\$ 705,772	\$ 722,363
Green Line	\$ 365,229	\$ 340,115	\$ 373,698	\$ 363,868	\$ 357,622	\$ 355,057	\$ 349,152	\$ 344,701	\$ 380,356	\$ 322,108	\$ 332,662	\$ 357,807	\$ 360,682
Gold Line	\$ 259,228	\$ 289,571	\$ 364,544	\$ 347,072	\$ 350,038	\$ 379,336	\$ 378,751	\$ 387,820	\$ 537,337	\$ 570,186	\$ 499,874	\$ 529,761	\$ 502,967
Totals	\$ 1,999,693	\$ 1,952,358	\$ 2,128,101	\$ 2,106,033	\$ 2,044,483	\$ 2,173,836	\$ 2,108,852	\$ 2,151,255	\$ 2,601,822	\$ 2,465,011	\$ 2,525,038	\$ 2,551,454	\$ 2,646,353

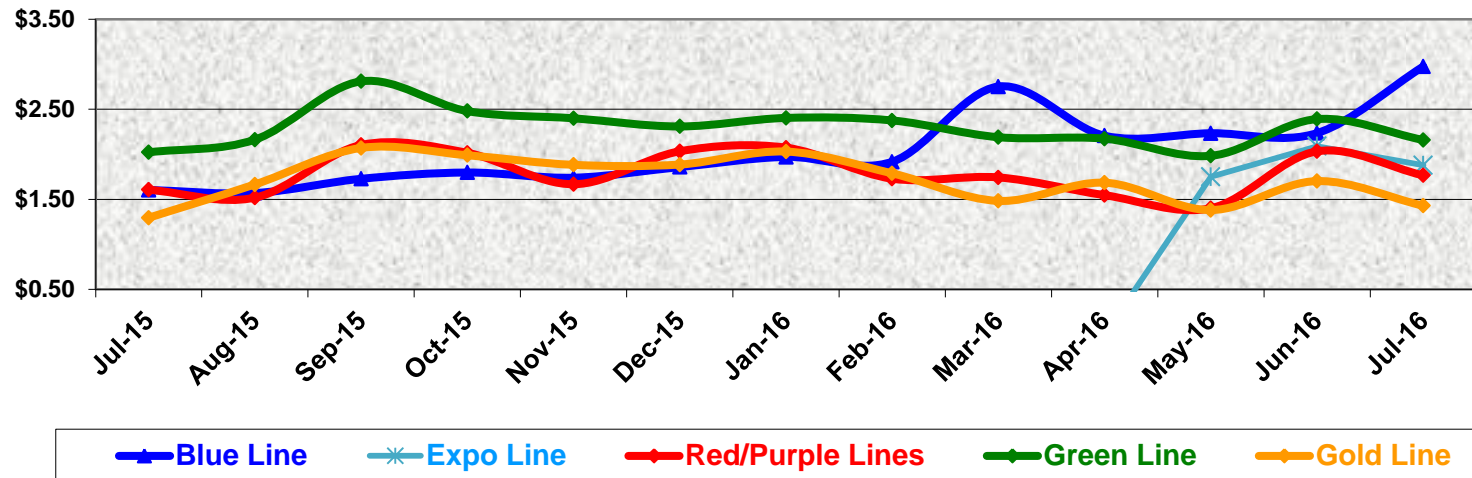
	Material Costs												
Blue Line	\$ 400,315	\$ 384,178	\$ 382,274	\$ 478,960	\$ 352,710	\$ 441,523	\$ 515,933	\$ 286,531	\$ 589,879	\$ 407,085	\$ 245,001	\$ 268,750	\$ 505,721
Expo Line	\$ -	\$ -	\$ -	\$ -	\$ -	\$ -	\$ -	\$ -	\$ -	\$ -	\$ 142,495	\$ 179,099	\$ 130,419
Red/Purple Lines	\$ 282,744	\$ 266,405	\$ 559,179	\$ 523,558	\$ 290,721	\$ 509,448	\$ 549,576	\$ 310,489	\$ 349,093	\$ 267,284	\$ 159,258	\$ 515,978	\$ 326,251
Green Line	\$ 118,559	\$ 159,916	\$ 256,185	\$ 217,820	\$ 155,914	\$ 174,269	\$ 216,535	\$ 172,625	\$ 138,673	\$ 159,615	\$ 125,334	\$ 188,111	\$ 132,247
Gold Line	\$ 163,954	\$ 258,793	\$ 282,958	\$ 296,684	\$ 209,546	\$ 232,338	\$ 206,856	\$ 145,891	\$ 191,351	\$ 283,211	\$ 197,620	\$ 285,877	\$ 185,153
Totals	\$ 965,571	\$ 1,069,291	\$ 1,480,596	\$ 1,517,022	\$ 1,008,891	\$ 1,357,578	\$ 1,488,899	\$ 915,536	\$ 1,268,996	\$ 1,117,195	\$ 869,708	\$ 1,437,815	\$ 1,279,791

Notes: Expo Line starts operating separately May 20th 2016.

Cost Per Mile July 2015-2016

Cost per mile:	Jul-15	Aug-15	Sep-15	Oct-15	Nov-15	Dec-15	Jan-16	Feb-16	Mar-16	Apr-16	May-16	Jun-16	Jul-16	Average
Blue Line	\$1.60	\$1.57	\$1.73	\$1.80	\$1.74	\$1.86	\$1.97	\$1.92	\$2.75	\$2.21	\$2.23	\$2.24	\$2.97	\$2.05
Expo Line	\$0.00	\$0.00	\$0.00	\$0.00	\$0.00	\$0.00	\$0.00	\$0.00	\$0.00	\$0.00	\$1.75	\$2.09	\$1.88	\$1.91
Red/Purple Lines	\$1.61	\$1.52	\$2.10	\$2.02	\$1.67	\$2.03	\$2.07	\$1.73	\$1.74	\$1.55	\$1.40	\$2.03	\$1.77	\$1.79
Green Line	\$2.02	\$2.16	\$2.81	\$2.48	\$2.40	\$2.31	\$2.40	\$2.38	\$2.19	\$2.17	\$1.98	\$2.39	\$2.16	\$2.30
Gold Line	\$1.30	\$1.67	\$2.07	\$1.99	\$1.88	\$1.89	\$2.03	\$1.79	\$1.48	\$1.68	\$1.38	\$1.70	\$1.43	\$1.71

Cost per Mile



ATU Absences vs. Overtime

July 2016

ABSENCE TYPE and HOURS	3941 Blue	3947 Expo	3942 Red	3943 Green	3944 Gold	3948 Monrovia	Total
BER-BEREAVEMENT	40	-	48	48	-	-	136
CTO-COMPENSATORY TIME OFF	40	12	100	52	-	18	222
CUT-EMPLOYEE LEAVES EARLY	1	2	0	0	-	-	2
DSL-DISABILITY LEAVE/LONG	816	-	184	-	48	-	1,048
EFH-EMG. FLOAT HOL.	88	48	152	96	48	60	492
ETO-EXCUSED TIME OFF	88	9	59	3	-	19	177
FMI-FAM IND INJURY	-	-	328	64	168	-	560
FML-FAMILY CARE LEAVE	280	344	416	128	8	24	1,200
FMS-FAMILY LEAVE SICK	24	-	85	-	-	24	133
HLF-HOLIDAY FLOATING	1,096	264	648	320	72	400	2,800
HNP-HOLIDAY NOT PAID	8	-	8	-	-	-	16
HOL-HOLIDAY LEGAL	528	112	584	152	56	232	1,664
II-INDUSTRIAL INJURY	-	-	-	109	-	40	149
JUR-JURY DUTY	48	-	64	-	-	-	112
LC1-LABOR CODE 233	120	44	197	16	56	45	478
LTI-OCCPIL/LONGTRM INJ LEAVE	168	-	336	168	-	-	672
MLN-MILITARY ABSENCE-UNPAID	64	-	32	-	-	-	96
OWP-OFF WITH PERMISSION	-	-	0	24	0	0	24
RTO-REQUESTED TIME OFF-NO PAY	-	-	-	-	-	1	1
SCK-SICK PAY	61	-	120	34	48	100	363
TAR-TARDY	2	0	1	1	-	0	5
VAC-VACATION	1,374	236	2,052	608	336	1,054	5,660
VAS-VACATION WHILE SICK	-	18	-	-	-	-	18
*TRAINING	-	-	-	24	396	1,048	1,468
Total Absence Hours	4,846	1,089	5,413	1,847	1,236	3,065	17,496
**ATU Number of Work Force (active)	108	33	104	45	17	61	368
Full Work Force hours/month	18,716	5,719	18,023	7,799	2,946	10,573	63,774
Absence as a % of Work Force	26%	19%	30%	24%	42%	29%	27%

OVERTIME TYPE and HOURS	3941 Blue	3947 Expo	3942 Red	3943 Green	3944 Gold	3948 Monrovia	Total
CTB-COMPENSATORY TIME TO BANK	305	337	483	338	24	197	1,685
OTP-PREM OVERTIME	3,531	989	3,512	1,287	66	1,049	10,434
TRO OVERTIME	-	-	4	-	-	-	4
WLO-Worked Lunch Overtime	135	126	195	99	24	68	646
Total Overtime Hours	3,970	1,452	4,195	1,724	113	1,314	12,768
Overtime as a % of Work Force	21%	25%	23%	22%	4%	12%	20%

*Training hours captured by Instruction Department are added to Absences Report.

**ATU Employee Numbers from ATU Manpower Status Report (last week of the month)



Metro

Note: Overtime also covers other required activities, including Training, Component Overhaul, and Special Events.

RFS Instruction Department Activities

July 2016

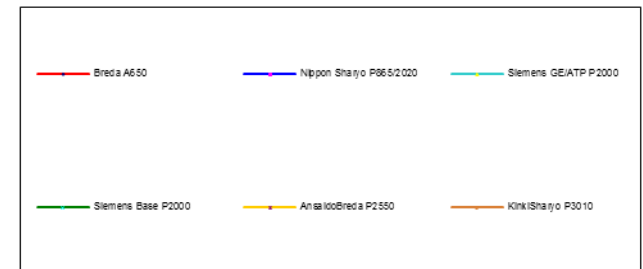
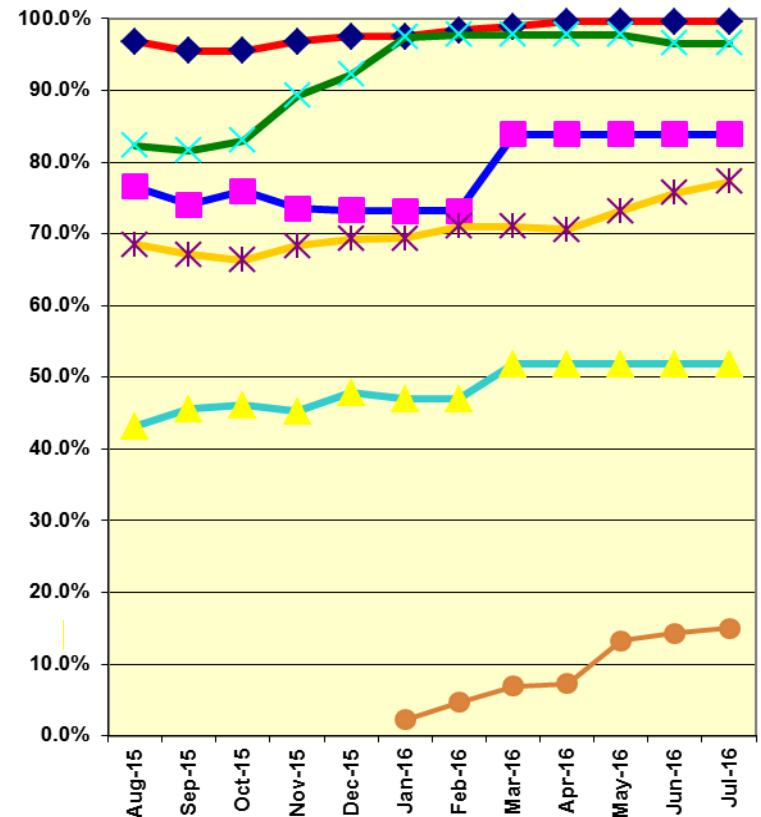
LRV Training classes completed during the month of July 2016

Description	Course Hours	Student Count	Training Hours
<u>Blue Line Training - (P865/2020 & P2000 LRVs):</u>			
No vehicle training this month			
Total Blue Line Training (Hours):			0
<u>Light Rail Training [In Monrovia (P3010 LRVs)]:</u>			
RFS KINKISHARYO CARBODY	24	9	216
RFS KINKISHARYO COUPLER	8	8	64
RFS KINKISHARYO PANTOGRAPH	8	9	72
RFS KINKISHARYO TRUCKS	24	9	216
RFS KINKISHARYO VEHICLE SYSTEMS	40	9	360
RFS HEGENSCHIEDT WHEEL TRUE - 24	40	3	120
Total Light Rail Training (Hours):			1048
<u>Expo Line Training - (P865/2020, P2000, & P3010 LRVs):</u>			
No vehicle training this month			
Total Expo Line Training (Hours):			0
<u>Gold Line Training (P2550 LRVs):</u>			
RFS ANSALDOBREDA 2550 COMMUNICATIONS	24	4	96
RFS ANSALDOBREDA 2550 COUPLER	12	3	36
RFS ANSALDOBREDA 2550 INTEGRATED DISPLAY	24	6	144
RFS ANSALDOBREDA 2550 TRUCKS	24	5	120
Total Gold Line Training (Hours):			396
<u>Green Line Training (P2000 LRVs):</u>			
RFS SIMMONS WHEEL TRUE	24	1	24
Total Green Line Training (Hours):			24

Total RFS Instruction for the month of June 2016 (Hours): 1,468

<u>Core Vehicle Training Completed:</u>	<u>BLUE</u>	<u>EXPO</u>	<u>GOLD</u>	<u>GREEN</u>
Percentage of core vehicle training complete:	83.9%	38.0%	77.3%	96.6%
Siemens P2000 training complete:	51.8%	37.3%	N/A	N/A
KinkiSharyo P3010 training complete:	N/A	15.0%	N/A	N/A
Average Specialist Rail Experience Level in Years:	14.9	2.1	7.3	10.0

Core Training Completed



Variations caused by new hires, employee transfers, & training completed

RFS Instruction Department Activities

July 2016

HRV & Other Training classes completed during the month of July 2016

<u>Description</u>	<u>Course Hours</u>	<u>Student Count</u>	<u>Training Hours</u>
Red Line Training - Breda A650 HRV:			
NO VEHICLE TRAINING THIS MONTH	0	0	0
Total Red Line Training Hours			0

<u>Other Instruction Activities</u>	<u>Curriculum</u>	<u>Administrative</u>	<u>Technical Support</u>	<u>Total</u>
A650 Curriculum, Administrative, and Technical Support	0	144	24	168
P865/P2020 Curriculum, Administrative, and Technical Support	22	155	43	220
P2000 Curriculum, Administrative, and Technical Support	0	72	8	80
P2550 Curriculum, Administrative, and Technical Support	6	30	16	52
P3010 Curriculum, Administrative, and Technical Support	222	8	0	230
P3010 10K Technical Support/Training	0	0	48	48
Time Off (HOL, TOV, & SCK)				136
Total Other Instruction Activities				934

Core Vehicle Training Completed: RED

Percentage of Core Vehicle Training Complete: 99.6%

Average Specialist Rail Experience Level in Years: 12.4