



Rail Fleet Services Monthly Report November 2016

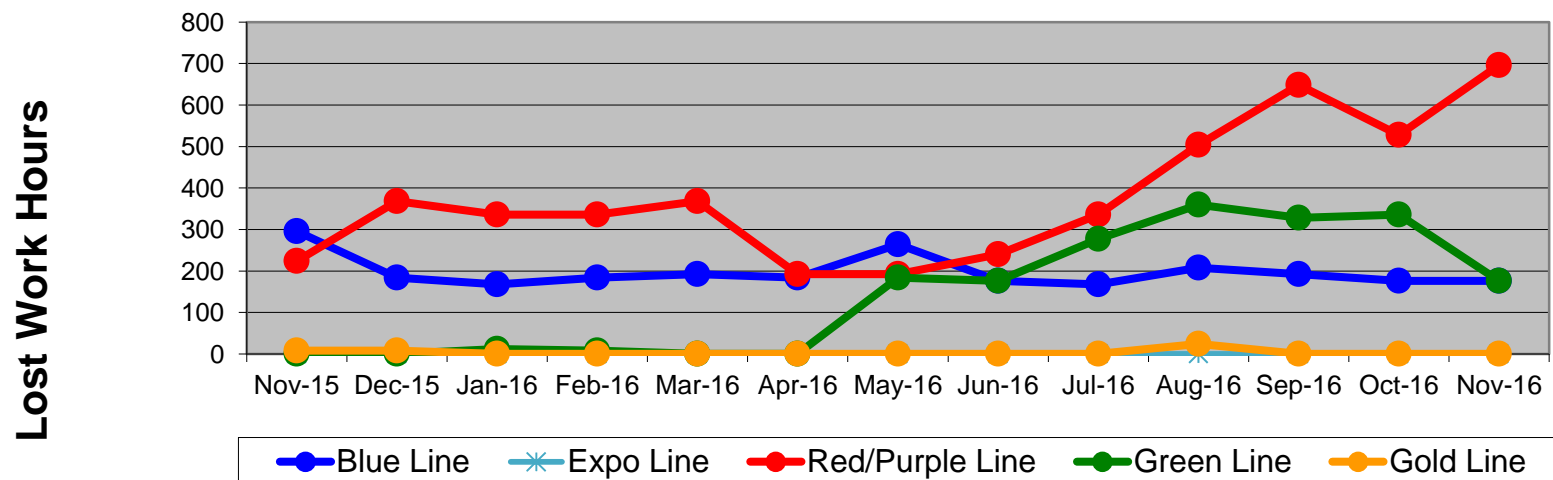
Table of Contents

| | | | |
|---|--|------|-------|
| • | Safety & Cleanliness | | |
| | - Industrial Injuries | Page | 3 |
| | - Rail Vehicle Accidents & Major Incidents | Page | 4 |
| | - Car Cleanliness | Page | 5 |
| • | Customer Service | | |
| | - Service Delivery – AM/PM Pull-Outs | Page | 6 |
| | - Vehicle Utilization – Red Line | Page | 7 |
| | - Vehicle Utilization – Blue Line & Expo Line | Page | 8 |
| | - Vehicle Utilization – Green Line & Gold Line | Page | 9 |
| | - All Train Delay Incidents | Page | 10 |
| | - Mean Miles Between Failures (Major) | Page | 11 |
| | - Mileage Between Data Range (by month) | Page | 12 |
| • | Business Processes | | |
| | - Top Incident Categories | Page | 13 |
| | - Major Incidents | Page | 14 |
| | - Preventive Maintenance Compliance | Page | 15 |
| | - RFS Leader Wrench Turning | Page | 16 |
| • | Finance | | |
| | - Vandalism & Graffiti Costs | Page | 17 |
| | - Vandalism & Graffiti Pictures | Page | 18 |
| | - Labor & Material Costs | Page | 19 |
| | - Cost per mile | Page | 20 |
| | - Absence vs. Overtime | Page | 21 |
| • | Growth | | |
| | - RFS Instruction Department Activities | Page | 22-23 |

Industrial Injuries – Lost Work Hours November 2015-2016

| | Nov-15 | Dec-15 | Jan-16 | Feb-16 | Mar-16 | Apr-16 | May-16 | Jun-16 | Jul-16 | Aug-16 | Sep-16 | Oct-16 | Nov-16 | 13-Month Period |
|-----------------|--------|--------|--------|--------|--------|--------|--------|--------|--------|--------|--------|--------|--------|--------------------|
| Blue Line | 296 | 184 | 168 | 184 | 192 | 184 | 264 | 176 | 168 | 208 | 192 | 176 | 176 | 2,568 |
| Expo Line | 0 | 0 | 0 | 0 | 0 | 0 | 0 | 0 | 0 | 0 | 0 | 0 | 0 | 0 |
| Red/Purple Line | 224 | 368 | 336 | 336 | 368 | 192 | 192 | 240 | 336 | 504 | 648 | 528 | 696 | 4,968 |
| Green Line | 0 | 0 | 12 | 8 | 0 | 0 | 184 | 176 | 277 | 360 | 328 | 336 | 176 | 1,857 |
| Gold Line | 8 | 8 | 0 | 0 | 0 | 0 | 0 | 0 | 0 | 24 | 0 | 0 | 0 | 40 |
| Totals | 528 | 560 | 516 | 528 | 560 | 376 | 640 | 592 | 781 | 1,096 | 1,168 | 1,040 | 1,048 | 9,433 |

Industrial Injuries (lost work hours)



Rail Vehicle Accidents & Major Incidents

November 2015-2016

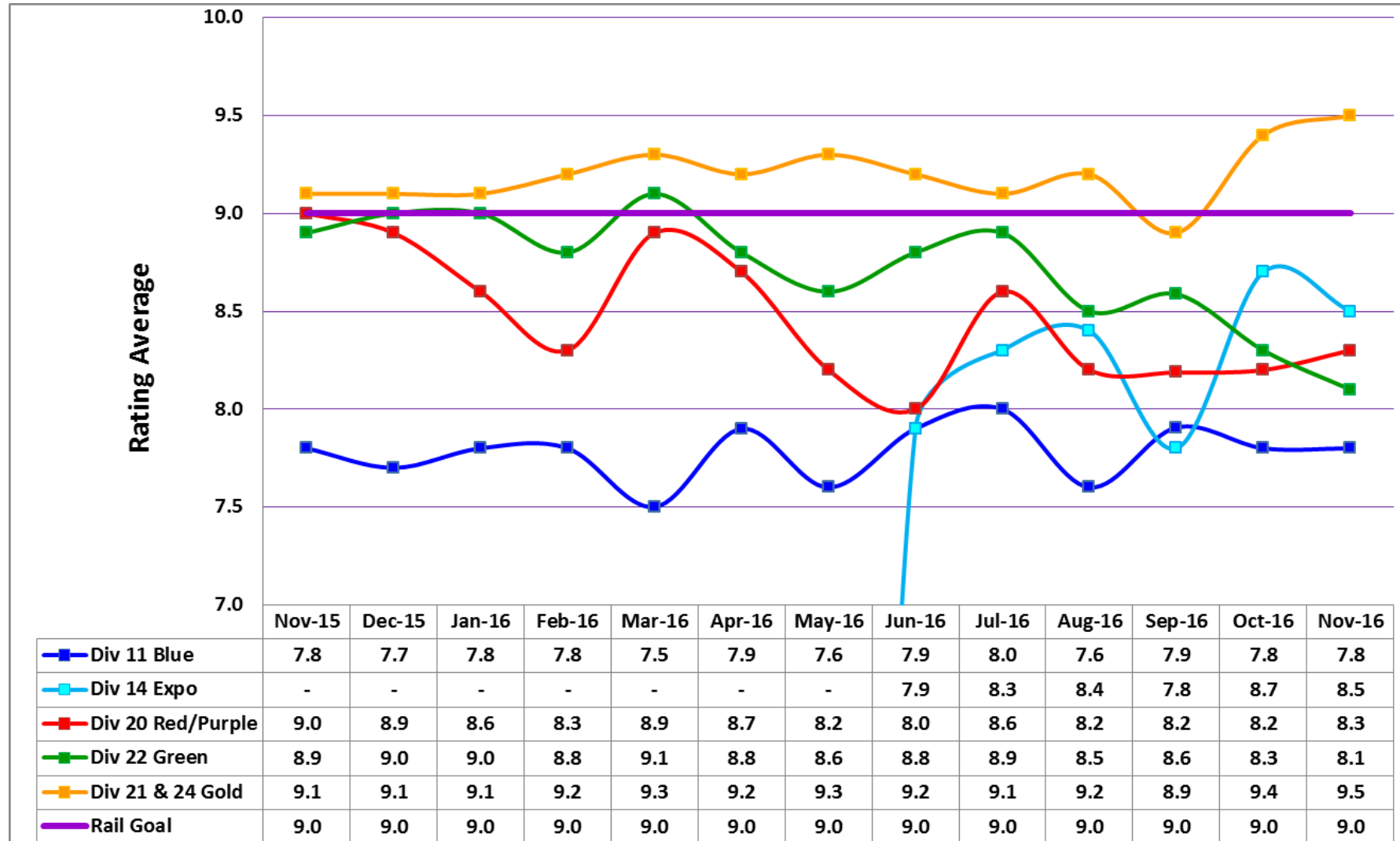
| Repair Costs | Nov-15 | Dec-15 | Jan-16 | Feb-16 | Mar-16 | Apr-16 | May-16 | Jun-16 | Jul-16 | Aug-16 | Sep-16 | Oct-16 | Nov-16 | 13-Month Period |
|-----------------|----------|----------|---------|---------|---------|---------|--------|----------|---------|----------|----------|----------|--------|-----------------|
| Blue Line | \$65,454 | \$17,160 | \$4,570 | \$7,379 | \$2,037 | \$1,232 | \$513 | \$0 | \$0 | \$3,211 | \$665 | \$28,089 | \$0 | \$130,310 |
| Expo Line | \$0 | \$0 | \$0 | \$0 | \$0 | \$0 | \$0 | \$0 | \$576 | \$0 | \$12,921 | \$9,468 | \$0 | \$22,965 |
| Red/Purple Line | \$0 | \$0 | \$0 | \$0 | \$0 | \$1,284 | \$0 | \$1,932 | \$840 | \$552 | \$0 | \$0 | \$0 | \$4,608 |
| Green Line | \$0 | \$23 | \$0 | \$0 | \$0 | \$0 | \$0 | \$0 | \$0 | \$51,535 | \$0 | \$0 | \$0 | \$51,558 |
| Gold Line | \$1,547 | \$1,547 | \$0 | \$53 | \$1,487 | \$4,646 | \$0 | \$19,451 | \$564 | \$0 | \$0 | \$5,694 | \$0 | \$34,989 |
| Totals | \$67,001 | \$18,730 | \$4,570 | \$7,432 | \$3,524 | \$7,162 | \$513 | \$21,383 | \$1,980 | \$55,298 | \$13,586 | \$43,251 | \$0 | \$244,430 |

| Rail Vehicle Accident Costs - November 2016 | | | | |
|--|------------|--------------|--|-------------|
| Date | Incident # | Problem Code | Incident Description | Repair Cost |
| Metro Blue Line | | | | |
| 11/11/16 | 2800973 | N/A | Reports of smoking brakes at 14th Street and Long Beach Blvd, Track 2, SB. | \$ - |
| Metro Blue Line Total | | | | \$ - |
| Grand Total | | | | \$ - |
| 10-71 = Train vs. Object/ 10-72 = Train vs. Pedestrian/ 10-73 = Train vs. Vehicle/ 10-74 = Train vs. MTA Vehicle/ 10-75 = Derailment | | | | |

Note: Repair costs are only the expenses captured during the time period of the report. Actual costs may be significantly higher, if repairs are spread out over several months.

Rail Vehicle – Car Cleanliness

November 2015-2016



Service Delivery November 2016

November 2016 - Service Delivery

Blue Line Fleet Size: 74

| <u>Pull Out</u> | <u>Average Vehicles Required</u> | <u>Average Available</u> | <u>% Up (Down)</u> |
|-----------------|--------------------------------------|------------------------------|--------------------|
| Weekday: | 58 | 61 | 105% |
| Weekend: | 26 | 55 | 212% |

Monthly Mileage: 449,467

Expo Line Fleet Size: 41

| <u>Pull Out</u> | <u>Average Vehicles Required</u> | <u>Average Available</u> | <u>% Up (Down)</u> |
|-----------------|--------------------------------------|------------------------------|--------------------|
| Weekday: | 39 | 38 | 97% |
| Weekend: | 35 | 38 | 109% |

Monthly Mileage: 291,077

Red/Purple Line Fleet Size: 104

| <u>Pull Out</u> | <u>Average Vehicles Required</u> | <u>Average Available</u> | <u>% Up (Down)</u> |
|-----------------|--------------------------------------|------------------------------|--------------------|
| Weekday: | 74 | 78 | 105% |
| Weekend: | 54 | 68 | 126% |

Monthly Mileage: 629,674

Green Line Fleet Size: 29

| <u>Pull Out</u> | <u>Average Vehicles Required</u> | <u>Average Available</u> | <u>% Up (Down)</u> |
|-----------------|--------------------------------------|------------------------------|--------------------|
| Weekday: | 22 | 22 | 100% |
| Weekend: | 14 | 16 | 114% |

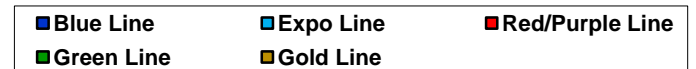
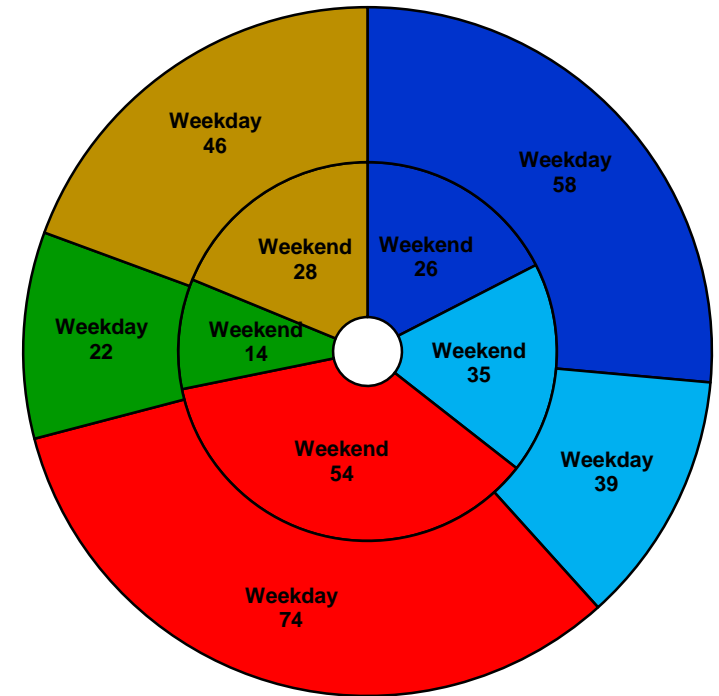
Monthly Mileage: 225,140

Gold Line Fleet Size: 60

| <u>Pull Out</u> | <u>Average Vehicles Required</u> | <u>Average Available</u> | <u>% Up (Down)</u> |
|-------------------|--------------------------------------|------------------------------|--------------------|
| Weekday (Div 21): | 10 | 10 | 100% |
| Weekday (Div 24): | 36 | 39 | 108% |
| Weekend (Div 24): | 28 | 39 | 139% |

***Monthly Mileage: 493,049**

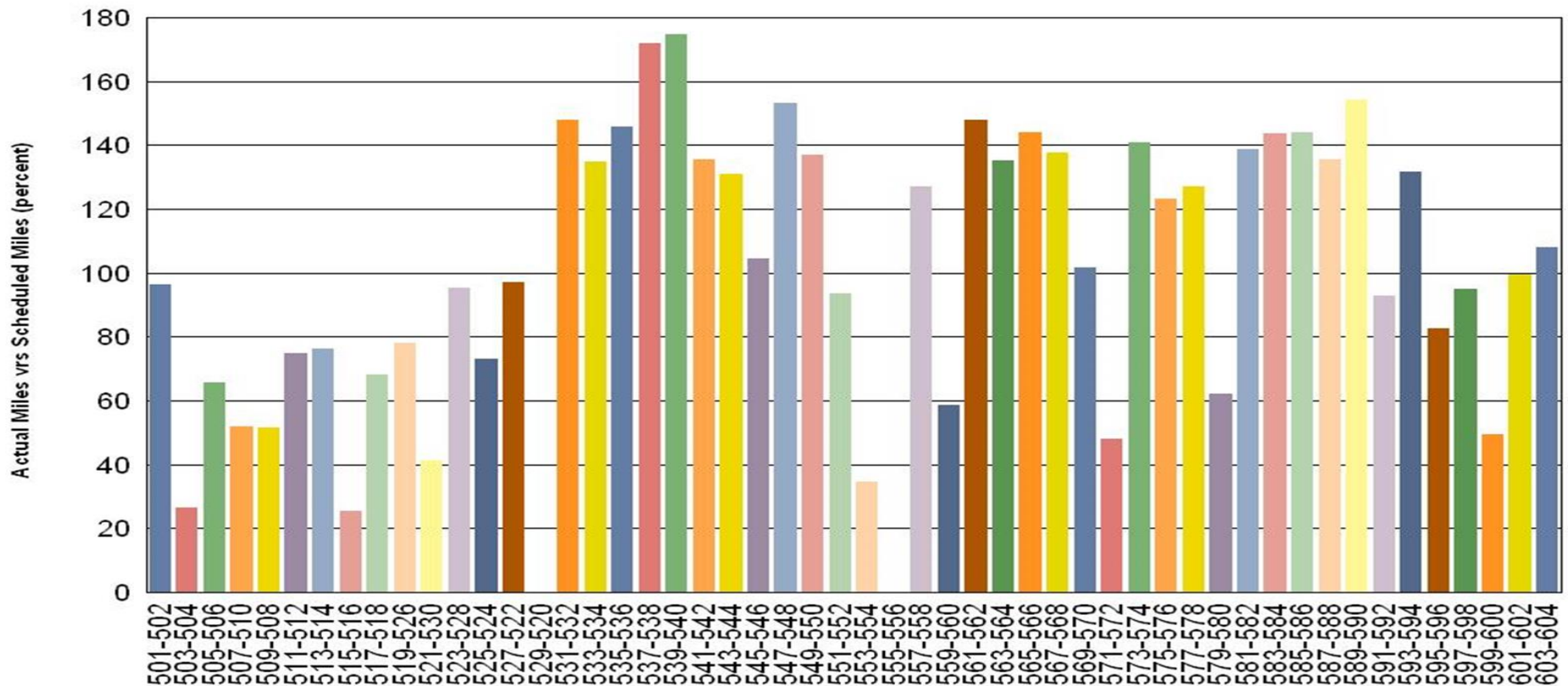
* Gold Line monthly mileage includes Division 21 and 24.



Metro

Vehicle Utilization November 2016

Metro Red/Purple Line (104 Cars)



Red/Purple Line:

The following cars were out of service due to:

Car # 503-504 – Propulsion Fault

Car # 515-516 – Propulsion Fault and Inspection

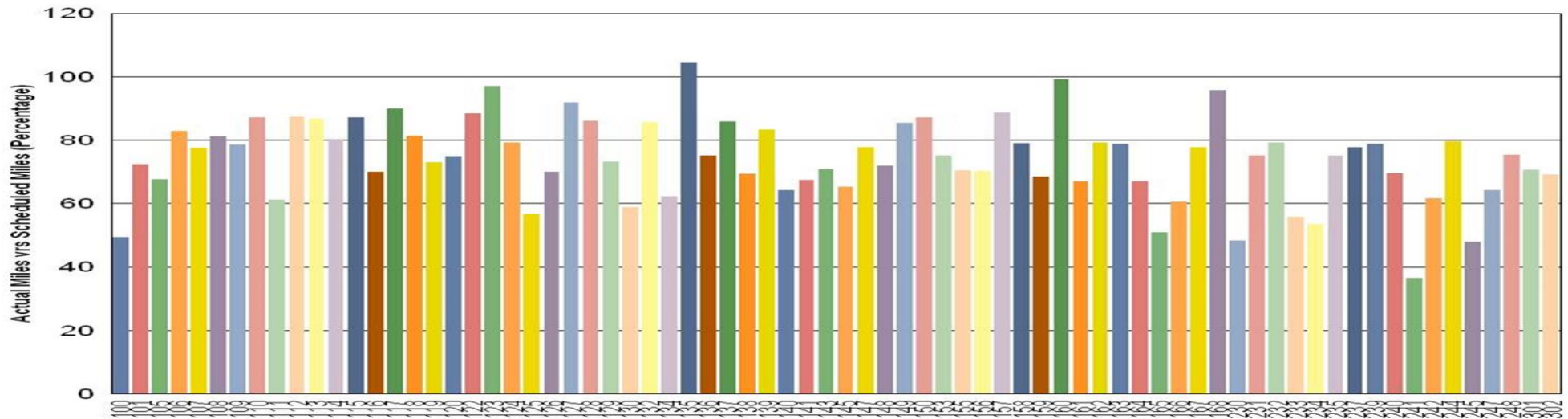
Car # 529-520 – Waiting for Blower Motors

Car # 553-554 – Propulsion Fault

Car # 555-556 – Floor Replacement Project

Vehicle Utilization November 2016

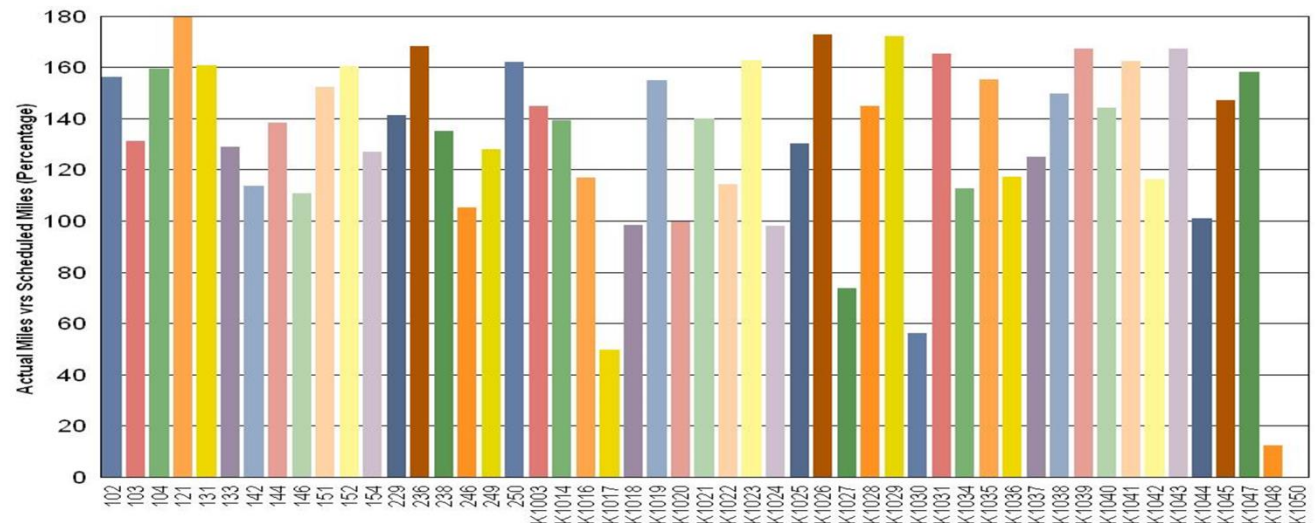
Metro Blue Line (74 Cars)



Blue Line: The following car was out of service due to:

Car # 241: Truck Repairs

Metro Expo Line (41 Cars)



Expo Line: The following cars were out of service due to:

Car # K1048 – Accident Repairs

Car # K1050 – New Accepted 11/28/2016



Note: Percentage includes an average 4% mileage deduction for yard mileage and vehicle testing.

Vehicle Utilization November 2016

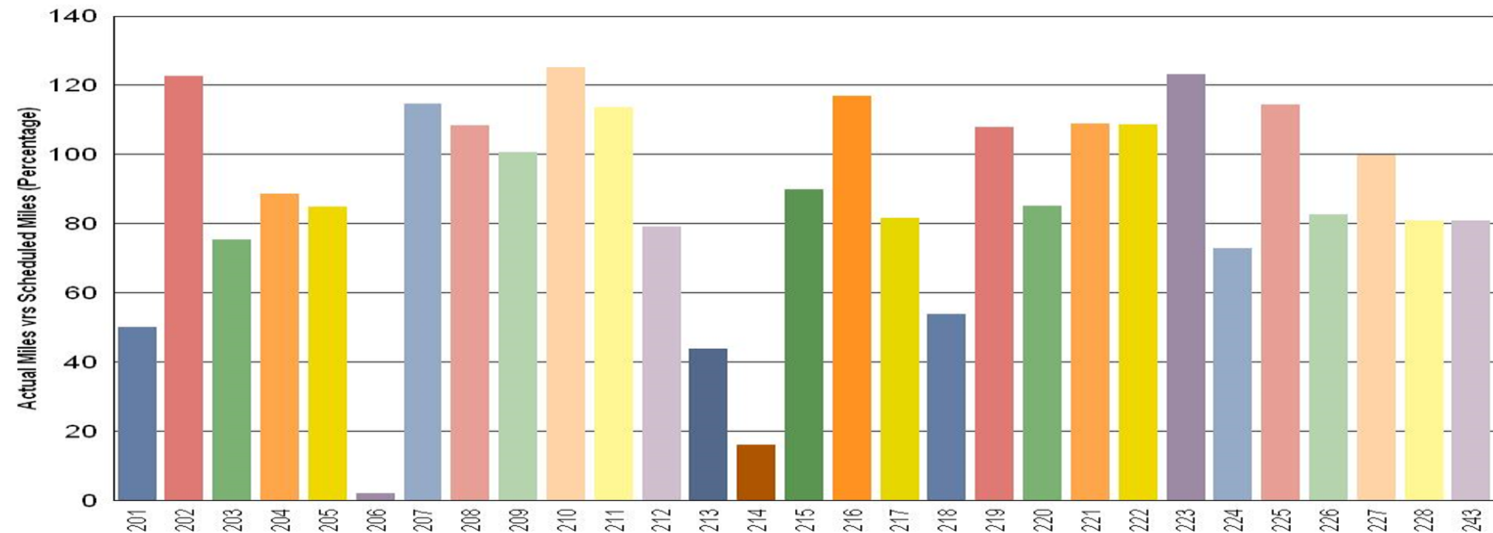
Metro Green Line (29 Cars)

Green Line:

The following cars were out of service due to:

Car # 206 – Engineering Hold (EMI)

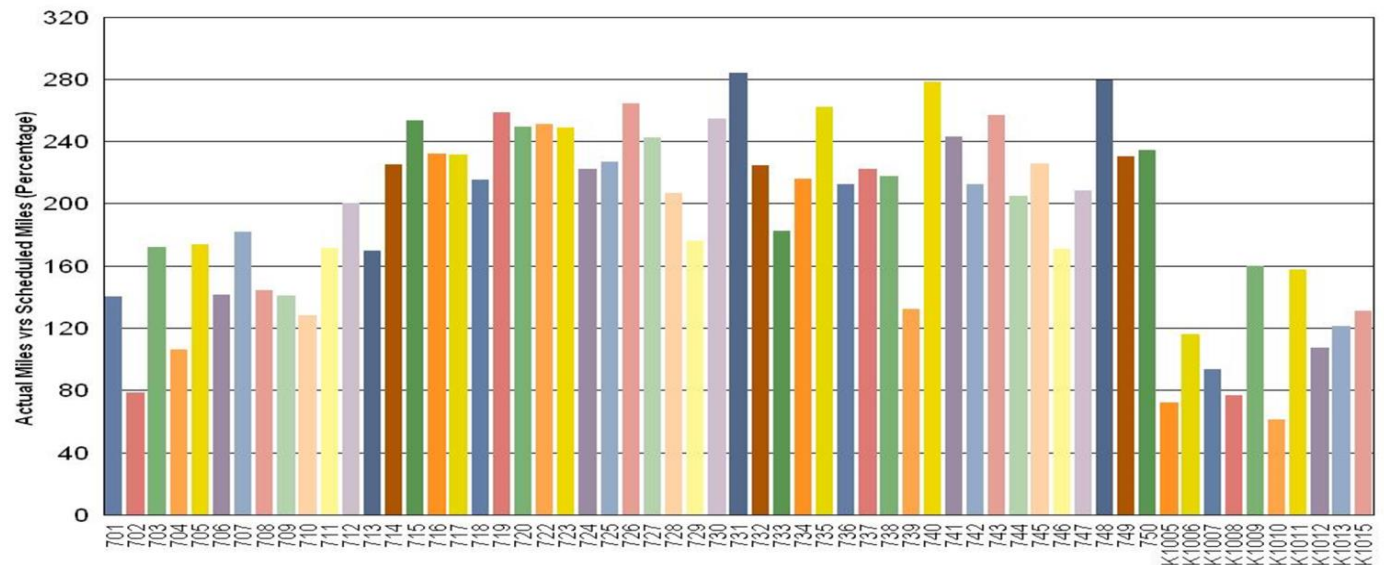
Car # 214 – Propulsion Faults



Metro Gold Line (60 Cars)

Gold Line:

The fleet has met the daily maximum utilization requirements for the month.

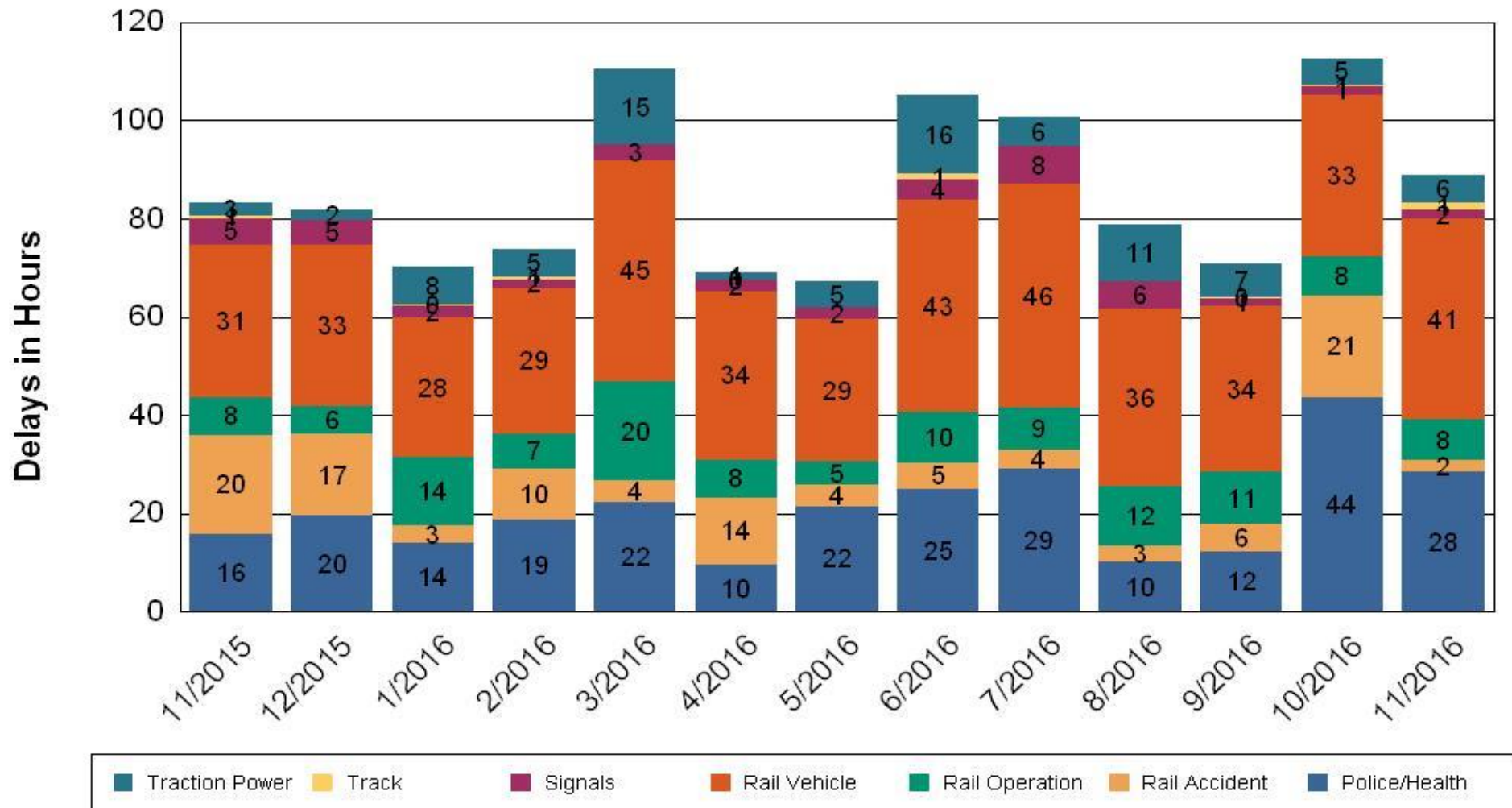


•Percentage includes an average 4% mileage deduction for yard mileage and vehicle testing.

All Train Delays (Hours) November 2015-2016

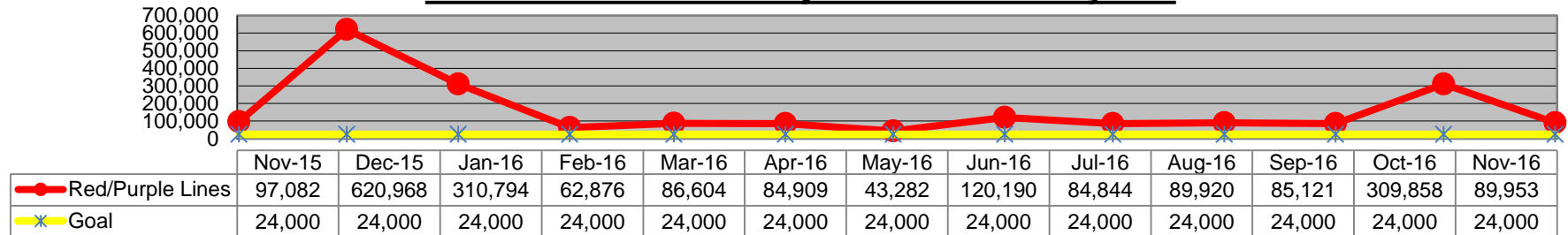
All Train Delays

Totals Include the delay to all trains involved (not just the primary incident)

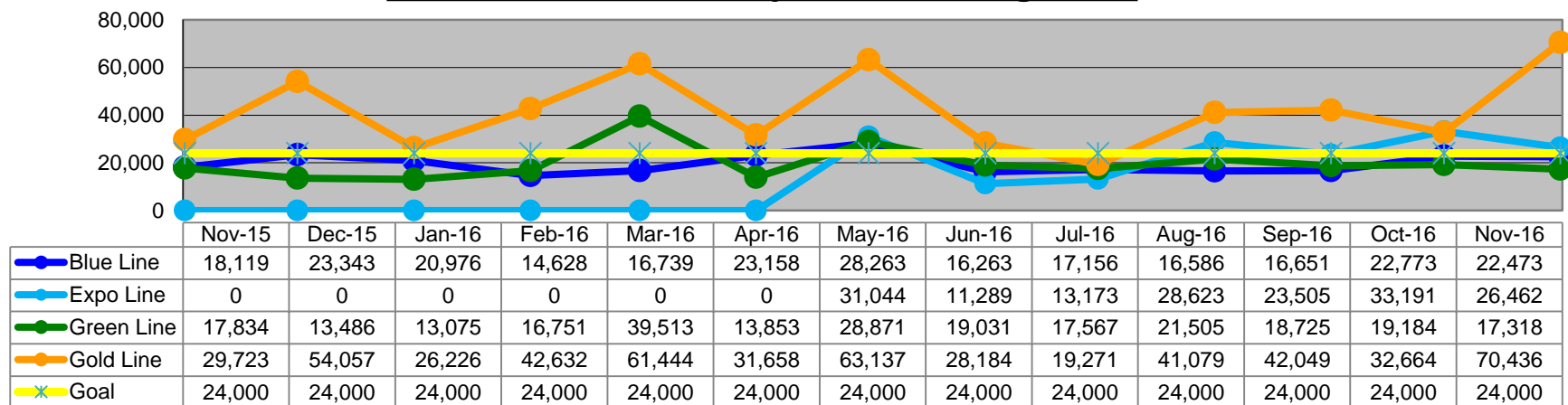


Mean Miles Between Failures (Major) November 2015-2016

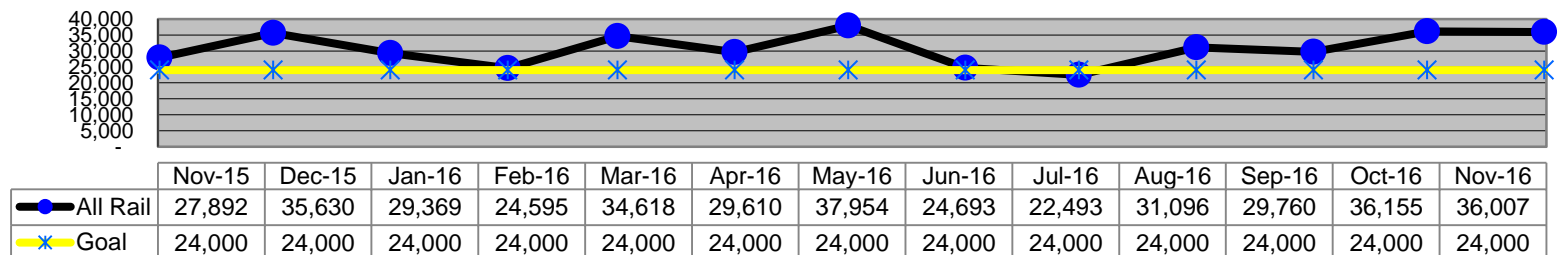
Mean Miles Between Major Failures - Heavy Rail



Mean Miles Between Major Failures - Light Rail

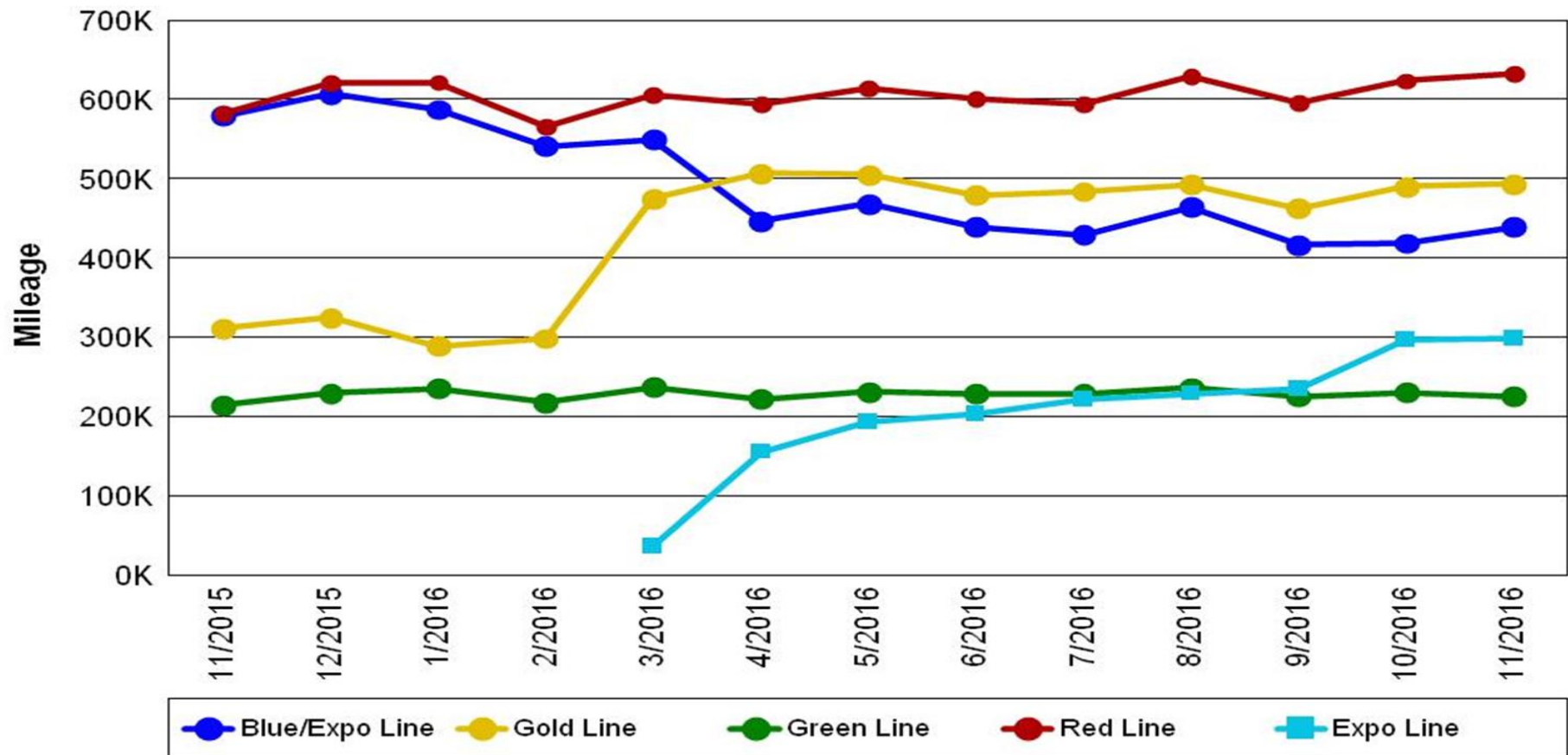


Mean Miles Between Major Failures (all)



Mileage Between Data Range (by month) November 2015-2016

Rail Division Monthly Mileage



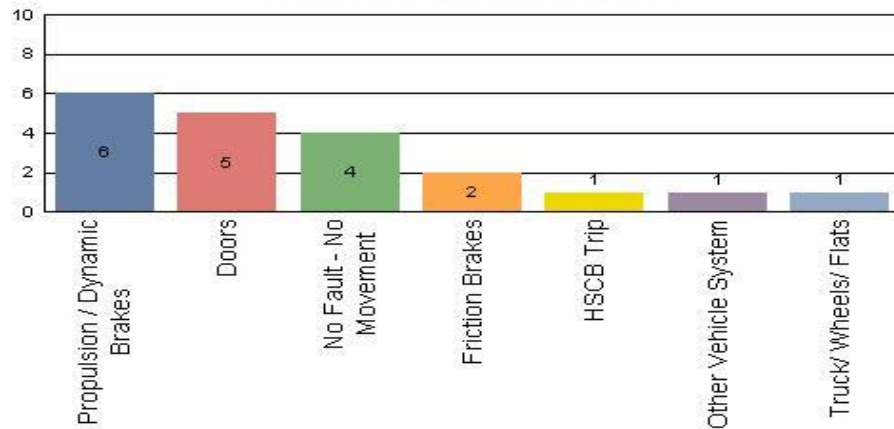
Notes:

- ❖ Gold Line increase in mileage is due to the open of the Foothill extension, which includes stations further apart and faster average running speeds.
- ❖ With the opening of Division 14 in Santa Monica, the Expo Line mileage is now being reported separately from the Blue Line.

Top Incident Categories November 2016

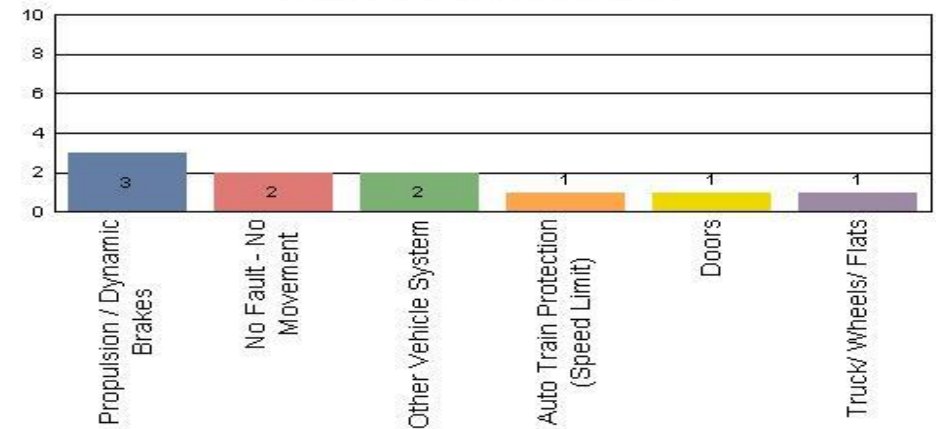
Metro Blue Line (Div 11)

Top Incident Categories



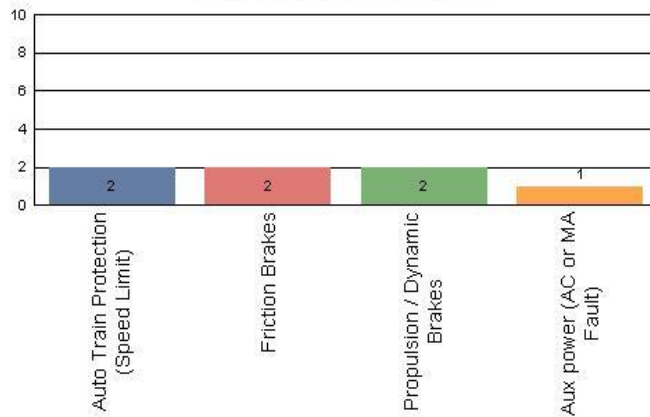
Metro Expo Line (Div 14)

Top Incident Categories



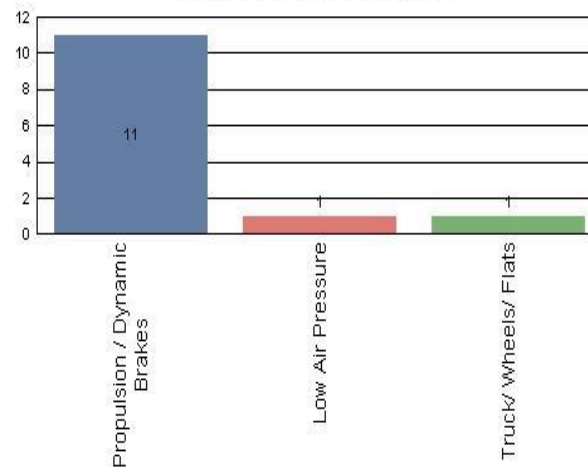
Metro Red/Purple Line (Div 20)

Top Incident Categories



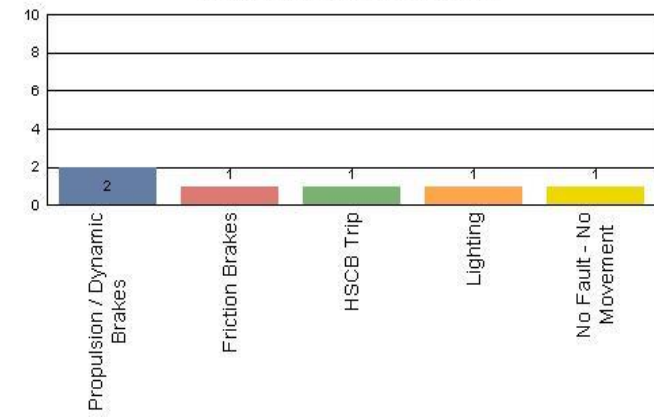
Metro Green Line (Div 22)

Top Incident Categories



Metro Gold Line (Div 21 & Div 24)

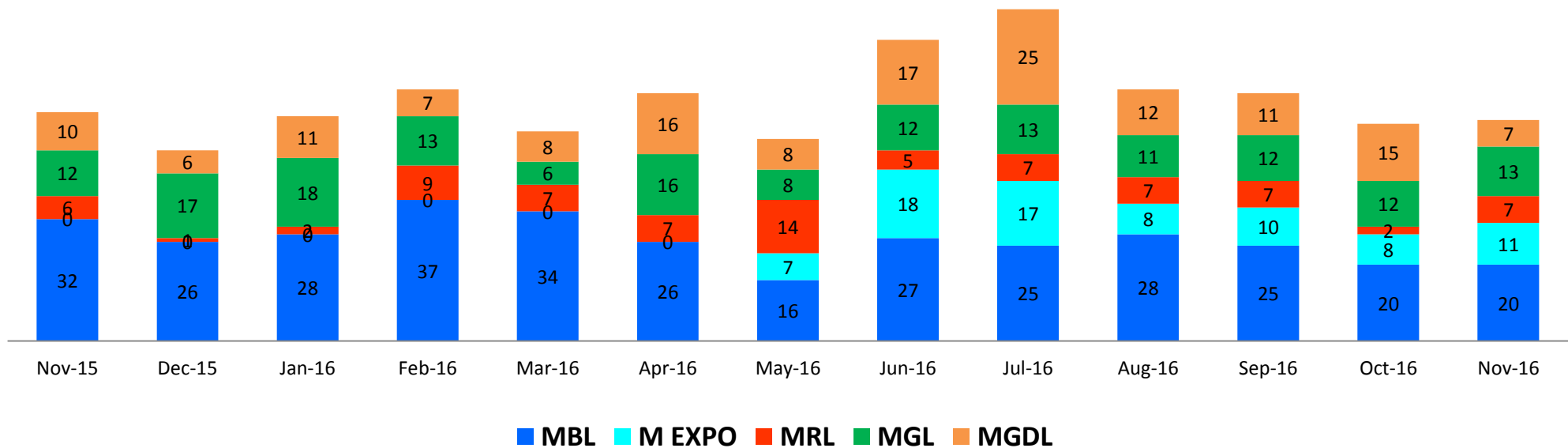
Top Incident Categories



Major Incidents

November 2015-2016

Numbers of Major System Failures (by Line)



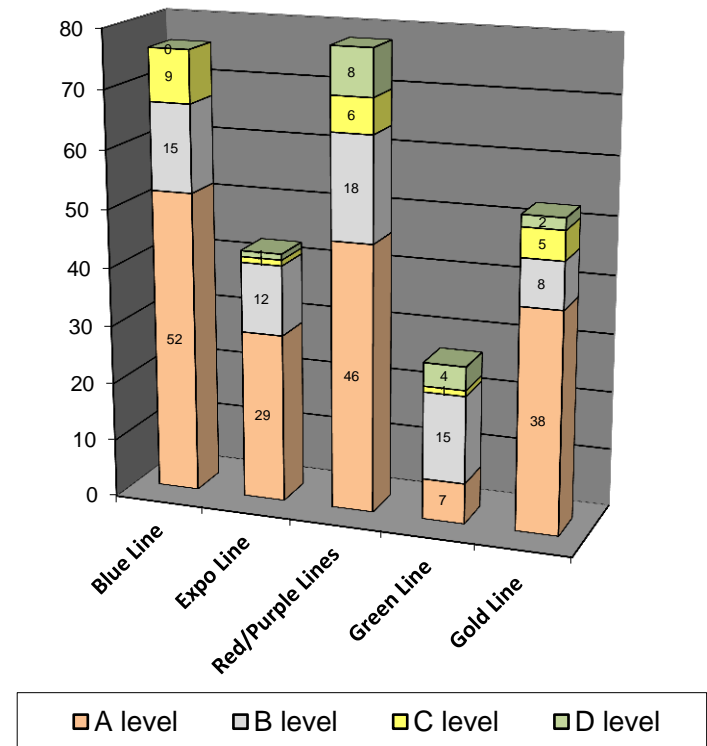
Preventive Maintenance Compliance

November 2015-2016

| PM Compliance | Nov-15 | Dec-15 | Jan-16 | Feb-16 | Mar-16 | Apr-16 | May-16 | Jun-16 | Jul-16 | Aug-16 | Sep-16 | Oct-16 | Nov-16 |
|------------------|--------|--------|--------|--------|--------|--------|--------|--------|--------|--------|--------|--------|--------|
| Blue Line | 100% | 100% | 100% | 100% | 100% | 100% | 100% | 100% | 100% | 100% | 100% | 100% | 100% |
| Expo Line | 0% | 0% | 0% | 0% | 0% | 0% | 100% | 100% | 100% | 100% | 100% | 100% | 100% |
| Red/Purple Lines | 100% | 100% | 100% | 100% | 100% | 100% | 100% | 100% | 100% | 100% | 100% | 100% | 100% |
| Green Line | 93% | 97% | 97% | 100% | 100% | 100% | 93% | 100% | 100% | 100% | 97% | 100% | 100% |
| Gold Line | 100% | 100% | 100% | 100% | 100% | 100% | 100% | 100% | 100% | 100% | 100% | 100% | 100% |

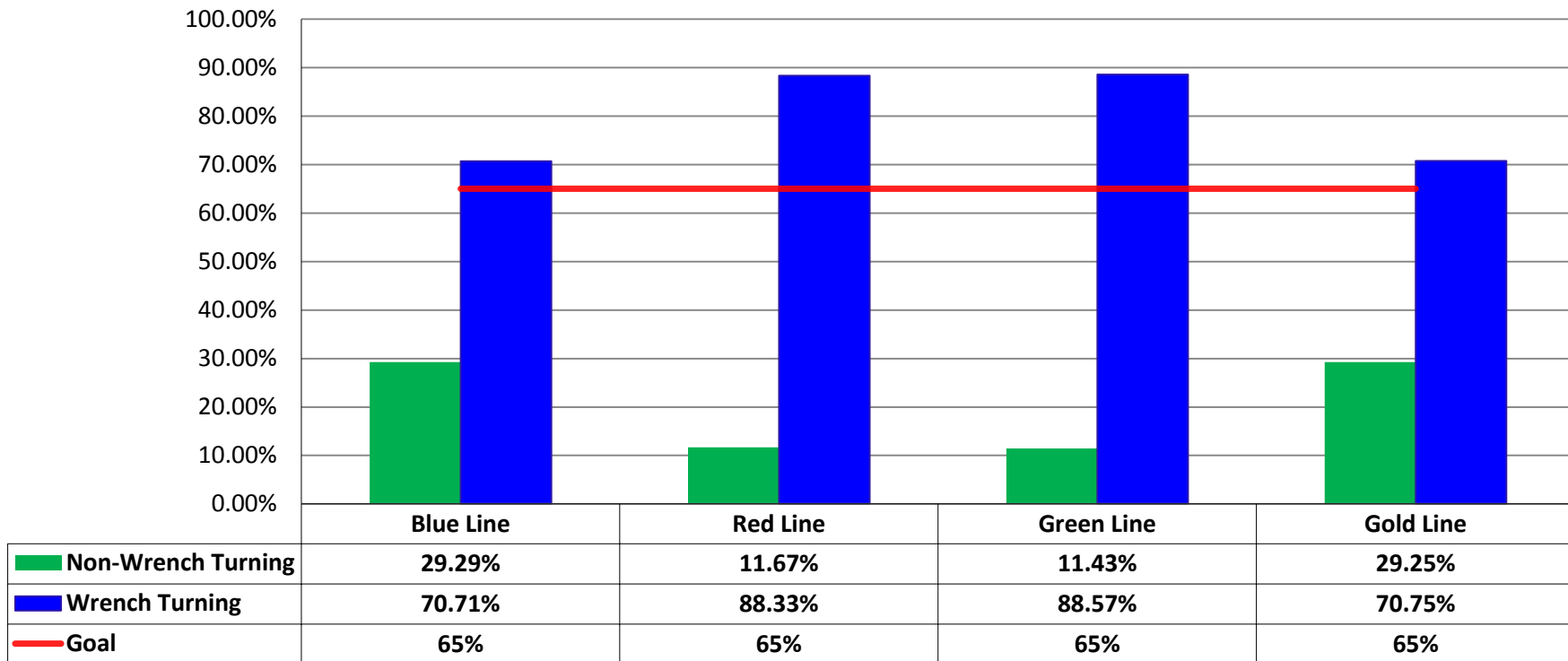
| Number of Preventive Maintenance Inspections - November 2016 | | | | | |
|--|------------|-----------|-----------|-----------|------------|
| Line | A level | B level | C level | D level | Totals |
| Blue Line | 52 | 15 | 9 | 0 | 76 |
| Expo Line | 29 | 12 | 1 | 1 | 43 |
| Red/Purple Lines | 46 | 18 | 6 | 8 | 78 |
| Green Line | 7 | 15 | 1 | 4 | 27 |
| Gold Line | 38 | 8 | 5 | 2 | 53 |
| Totals: | 172 | 68 | 22 | 15 | 277 |

| Explanation of PM Inspection levels | | Miles | | | |
|-------------------------------------|------------|---------|---------|---------|---------|
| Line | Type | A level | B level | C level | D level |
| Blue/Expo Lines | P865/P2020 | 5,000 | 15,000 | 30,000 | 60,000 |
| Blue/Expo Lines | P2000 | 7,500 | 22,500 | 45,000 | 90,000 |
| Red/Purple Lines | A650 | 7,500 | 22,500 | 45,000 | 90,000 |
| Green Line | P2000 | 7,500 | 22,500 | 45,000 | 90,000 |
| Gold Line | P2550 | 10,000 | 30,000 | 60,000 | 120,000 |
| Gold/Expo Lines | P3010 | 10,000 | 30,000 | 60,000 | 120,000 |



RFS Leader Wrench Turning November 2016

RFS - Leader Wrench Turning November 2016



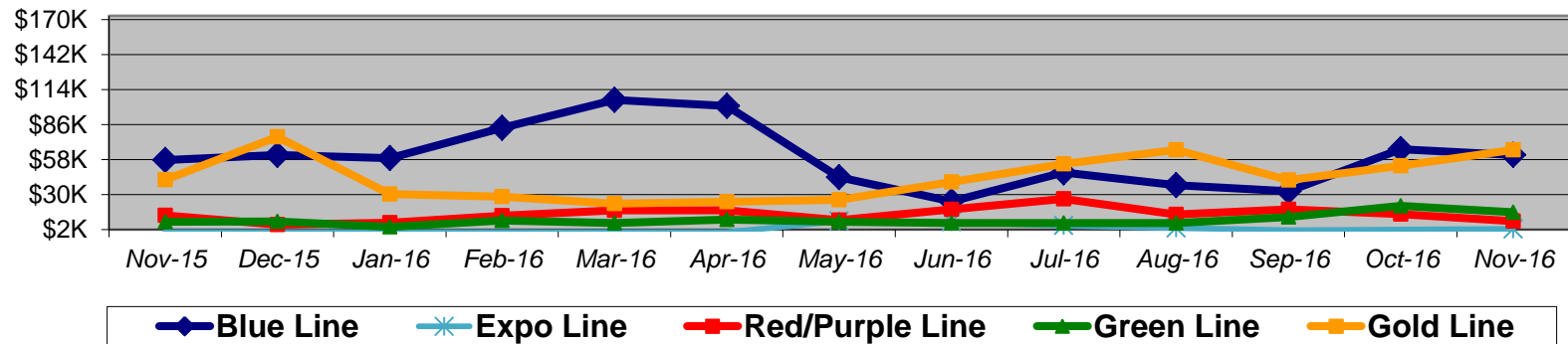
Notes: Labor hours contributed by Maint Specialist Leader, Rail Body/Paint Repair Leader, and Maint Specialist Temporary Leader

Vandalism & Graffiti Report

November 2015-2016

Graffiti Costs

| | Nov-15 | Dec-15 | Jan-16 | Feb-16 | Mar-16 | Apr-16 | May-16 | Jun-16 | Jul-16 | Aug-16 | Sep-16 | Oct-16 | Nov-16 | 13-Month Period |
|-----------------|--------|--------|--------|--------|--------|--------|--------|--------|--------|--------|--------|--------|--------|-----------------|
| Blue Line | \$58K | \$62K | \$59K | \$83K | \$106K | \$101K | \$44K | \$24K | \$48K | \$38K | \$33K | \$66K | \$62K | \$783K |
| Expo Line | \$K | \$K | \$K | \$K | \$K | \$K | \$9K | \$8K | \$5K | \$3K | \$2K | \$2K | \$2K | \$31K |
| Red/Purple Line | \$13K | \$6K | \$7K | \$13K | \$17K | \$17K | \$9K | \$18K | \$27K | \$14K | \$18K | \$14K | \$9K | \$184K |
| Green Line | \$8K | \$9K | \$4K | \$9K | \$7K | \$10K | \$8K | \$7K | \$7K | \$7K | \$12K | \$21K | \$16K | \$126K |
| Gold Line | \$42K | \$76K | \$30K | \$28K | \$23K | \$24K | \$26K | \$40K | \$54K | \$66K | \$42K | \$53K | \$66K | \$570K |
| Totals: | \$121K | \$152K | \$101K | \$134K | \$153K | \$153K | \$96K | \$98K | \$141K | \$128K | \$106K | \$157K | \$154K | \$1,694K |



November 2016 Vandalism & Graffiti - All Rail

| | Qty | Labor | Materials | Totals |
|--------------------------|--------------|-------------------|------------------|-------------------|
| Windows Replaced | 52 | \$ 12,222 | \$ 16,197 | \$ 28,419 |
| Vandal Shields Replaced | 687 | \$ 31,406 | \$ 15,852 | \$ 47,258 |
| Seats Cleaned | 288 | \$ 1,271 | \$ 40 | \$ 1,311 |
| Seats Inserts Replaced | 363 | \$ 20,493 | \$ 4,978 | \$ 25,471 |
| Graffiti Removal - Other | 1,720 | \$ 40,370 | \$ 5,405 | \$ 45,775 |
| Repainting Panels | 196 | \$ 6,174 | \$ - | \$ 6,174 |
| Totals | 3,306 | \$ 111,936 | \$ 42,472 | \$ 154,408 |

Vandalism & Graffiti Pictures

November 2016

Blue Line

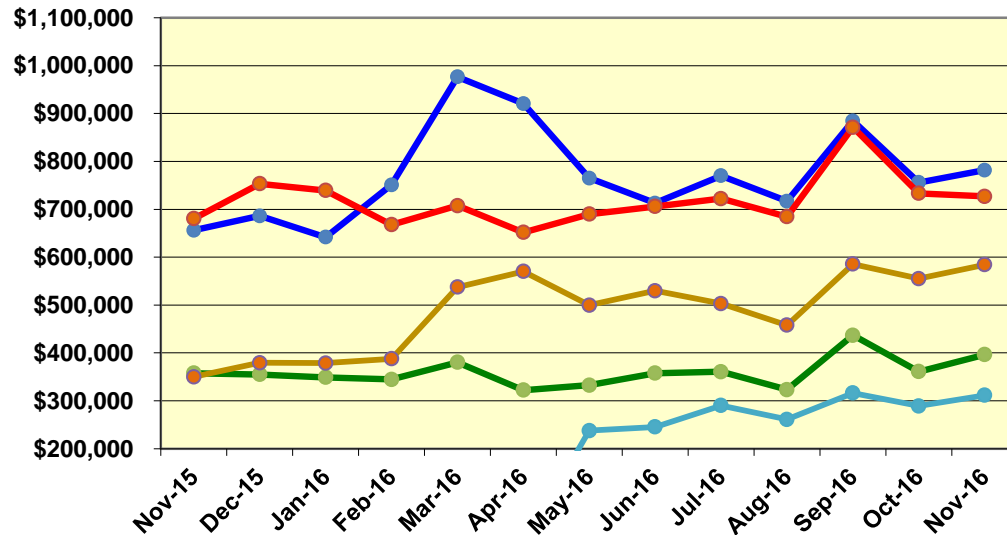


Red Line

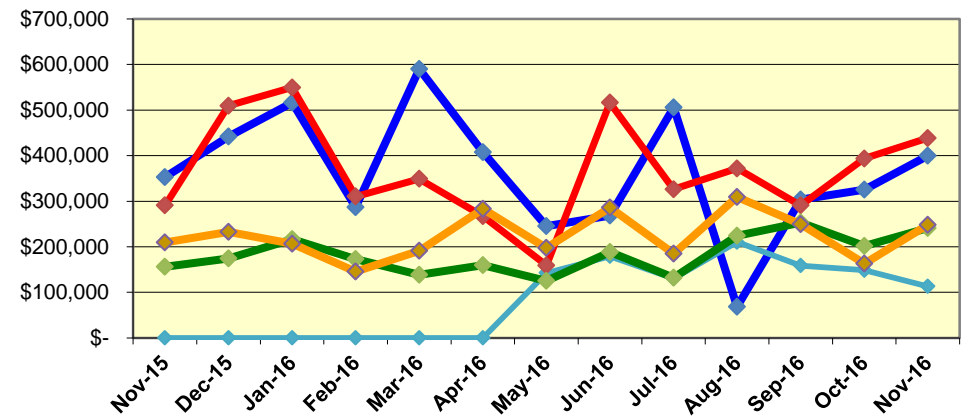


Labor and Material Costs November 2015-2016

Labor Costs



Material Costs



| Nov-15 | Dec-15 | Jan-16 | Feb-16 | Mar-16 | Apr-16 | May-16 | Jun-16 | Jul-16 | Aug-16 | Sep-16 | Oct-16 | Nov-16 |
|--------|--------|--------|--------|--------|--------|--------|--------|--------|--------|--------|--------|--------|
|--------|--------|--------|--------|--------|--------|--------|--------|--------|--------|--------|--------|--------|

Labor Costs

| | Nov-15 | Dec-15 | Jan-16 | Feb-16 | Mar-16 | Apr-16 | May-16 | Jun-16 | Jul-16 | Aug-16 | Sep-16 | Oct-16 | Nov-16 |
|------------------|--------------|--------------|--------------|--------------|--------------|--------------|--------------|--------------|--------------|--------------|--------------|--------------|--------------|
| Blue Line | \$ 656,195 | \$ 686,227 | \$ 641,613 | \$ 750,961 | \$ 976,568 | \$ 920,945 | \$ 765,108 | \$ 712,774 | \$ 770,143 | \$ 716,923 | \$ 884,555 | \$ 755,958 | \$ 781,662 |
| Expo Line | \$ - | \$ - | \$ - | \$ - | \$ - | \$ - | \$ 237,630 | \$ 245,339 | \$ 290,199 | \$ 261,217 | \$ 316,395 | \$ 289,213 | \$ 311,627 |
| Red/Purple Lines | \$ 680,629 | \$ 753,216 | \$ 739,336 | \$ 667,772 | \$ 707,560 | \$ 651,771 | \$ 689,764 | \$ 705,772 | \$ 722,363 | \$ 684,555 | \$ 871,431 | \$ 733,202 | \$ 727,093 |
| Green Line | \$ 357,622 | \$ 355,057 | \$ 349,152 | \$ 344,701 | \$ 380,356 | \$ 322,108 | \$ 332,662 | \$ 357,807 | \$ 360,682 | \$ 323,087 | \$ 436,825 | \$ 360,963 | \$ 396,278 |
| Gold Line | \$ 350,038 | \$ 379,336 | \$ 378,751 | \$ 387,820 | \$ 537,337 | \$ 570,186 | \$ 499,874 | \$ 529,761 | \$ 502,967 | \$ 458,067 | \$ 585,582 | \$ 555,213 | \$ 584,203 |
| Totals | \$ 2,044,483 | \$ 2,173,836 | \$ 2,108,852 | \$ 2,151,255 | \$ 2,601,822 | \$ 2,465,011 | \$ 2,525,038 | \$ 2,551,454 | \$ 2,646,353 | \$ 2,443,849 | \$ 3,094,789 | \$ 2,694,548 | \$ 2,800,863 |

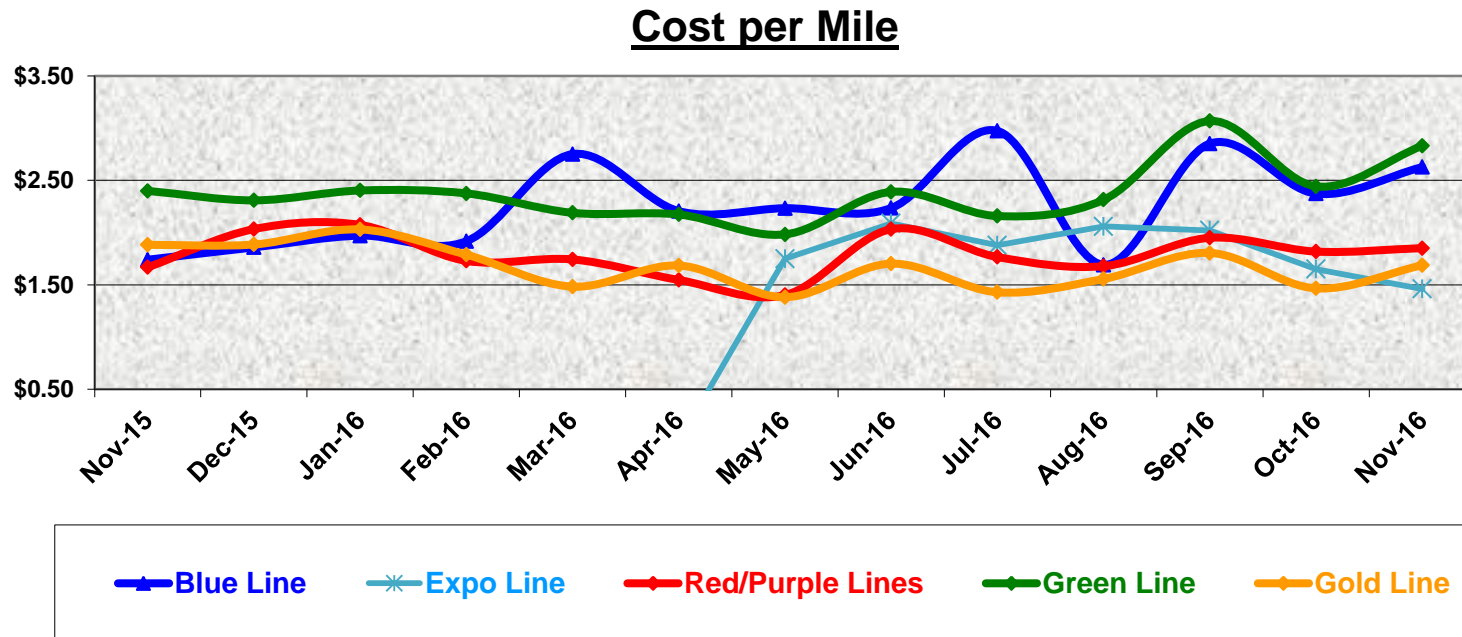
Material Costs

| | Nov-15 | Dec-15 | Jan-16 | Feb-16 | Mar-16 | Apr-16 | May-16 | Jun-16 | Jul-16 | Aug-16 | Sep-16 | Oct-16 | Nov-16 |
|------------------|--------------|--------------|--------------|------------|--------------|--------------|------------|--------------|--------------|--------------|--------------|--------------|--------------|
| Blue Line | \$ 352,710 | \$ 441,523 | \$ 515,933 | \$ 286,531 | \$ 589,879 | \$ 407,085 | \$ 245,001 | \$ 268,750 | \$ 505,721 | \$ 68,670 | \$ 303,202 | \$ 324,999 | \$ 399,427 |
| Expo Line | \$ - | \$ - | \$ - | \$ - | \$ - | \$ - | \$ 142,495 | \$ 179,099 | \$ 130,419 | \$ 210,312 | \$ 158,666 | \$ 148,670 | \$ 113,229 |
| Red/Purple Lines | \$ 290,721 | \$ 509,448 | \$ 549,576 | \$ 310,489 | \$ 349,093 | \$ 267,284 | \$ 159,258 | \$ 515,978 | \$ 326,251 | \$ 371,920 | \$ 290,597 | \$ 393,507 | \$ 438,480 |
| Green Line | \$ 155,914 | \$ 174,269 | \$ 216,535 | \$ 172,625 | \$ 138,673 | \$ 159,615 | \$ 125,334 | \$ 188,111 | \$ 132,247 | \$ 224,414 | \$ 252,988 | \$ 201,438 | \$ 241,344 |
| Gold Line | \$ 209,546 | \$ 232,338 | \$ 206,856 | \$ 145,891 | \$ 191,351 | \$ 283,211 | \$ 197,620 | \$ 285,877 | \$ 185,153 | \$ 308,906 | \$ 249,398 | \$ 162,899 | \$ 247,842 |
| Totals | \$ 1,008,891 | \$ 1,357,578 | \$ 1,488,899 | \$ 915,536 | \$ 1,268,996 | \$ 1,117,195 | \$ 869,708 | \$ 1,437,815 | \$ 1,279,791 | \$ 1,184,222 | \$ 1,254,851 | \$ 1,231,513 | \$ 1,440,322 |

Cost Per Mile

November 2015-2016

| Cost per mile: | Nov-15 | Dec-15 | Jan-16 | Feb-16 | Mar-16 | Apr-16 | May-16 | Jun-16 | Jul-16 | Aug-16 | Sep-16 | Oct-16 | Nov-16 | Average |
|------------------|--------|--------|--------|--------|--------|--------|--------|--------|--------|--------|--------|--------|--------|---------|
| Blue Line | \$1.74 | \$1.86 | \$1.97 | \$1.92 | \$2.75 | \$2.21 | \$2.23 | \$2.24 | \$2.97 | \$1.69 | \$2.85 | \$2.37 | \$2.63 | \$2.26 |
| Expo Line | \$0.00 | \$0.00 | \$0.00 | \$0.00 | \$0.00 | \$0.00 | \$1.75 | \$2.09 | \$1.88 | \$2.06 | \$2.02 | \$1.65 | \$1.46 | \$1.84 |
| Red/Purple Lines | \$1.67 | \$2.03 | \$2.07 | \$1.73 | \$1.74 | \$1.55 | \$1.40 | \$2.03 | \$1.77 | \$1.68 | \$1.95 | \$1.82 | \$1.85 | \$1.79 |
| Green Line | \$2.40 | \$2.31 | \$2.40 | \$2.38 | \$2.19 | \$2.17 | \$1.98 | \$2.39 | \$2.16 | \$2.31 | \$3.07 | \$2.44 | \$2.83 | \$2.39 |
| Gold Line | \$1.88 | \$1.89 | \$2.03 | \$1.79 | \$1.48 | \$1.68 | \$1.38 | \$1.70 | \$1.43 | \$1.56 | \$1.81 | \$1.47 | \$1.69 | \$1.68 |



ATU Absences vs. Overtime

November 2016

| ABSENCE TYPE and HOURS | 3941 Blue | 3947 Expo | 3942 Red | 3943 Green | 3944 Gold | 3948 Monrovia | Total |
|-------------------------------------|--------------|------------|--------------|--------------|------------|---------------|---------------|
| AWP-ABSENT W/O PERMISSION | - | - | - | 32 | - | - | 32 |
| BER-BEREAVEMENT | 24 | - | 40 | 40 | - | - | 104 |
| CTO-COMPENSATORY TIME OFF | 137 | 120 | 405 | 96 | 46 | 188 | 992 |
| CUT-EMPLOYEE LEAVES EARLY | 1 | 1 | 0 | 2 | 1 | 7 | 11 |
| DSL-DISABILITY LEAVE/LONG | 736 | - | 224 | 72 | - | - | 1,032 |
| EFH-EMG. FLOAT HOL. | 24 | - | 80 | 8 | - | 8 | 120 |
| ETO-EXCUSED TIME OFF | 89 | 32 | 52 | 9 | - | 21 | 202 |
| FMI-FAM IND INJURY | - | - | 136 | 96 | 176 | - | 408 |
| FML-FAMILY CARE LEAVE | 608 | 112 | 92 | 128 | 16 | 96 | 1,052 |
| FMS-FAMILY LEAVE SICK | 196 | 56 | 8 | 40 | 8 | 16 | 324 |
| HLF-HOLIDAY FLOATING | 376 | 104 | 384 | 96 | 64 | 248 | 1,272 |
| HOL-HOLIDAY LEGAL | 560 | 88 | 520 | 136 | 24 | 272 | 1,600 |
| II-INDUSTRIAL INJURY | - | - | - | 88 | - | - | 88 |
| IPD-INJURED PARTIAL DAY | 4 | - | - | - | - | - | 4 |
| JUR-JURY DUTY | 8 | - | - | - | - | - | 8 |
| LC1-LABOR CODE 233 | 144 | 24 | 190 | 36 | 40 | 132 | 566 |
| LTI-OCCPIL/LONGTRM INJ LEAVE | 176 | - | 696 | 88 | - | - | 960 |
| OWP-OFF WITH PERMISSION | 3 | - | - | 1 | - | - | 4 |
| RTO-REQUESTED TIME OFF-NO PAY | 8 | - | - | - | 2 | 8 | 18 |
| SCK-SICK PAY | 316 | 143 | 211 | 16 | 16 | 88 | 790 |
| SCW-SICK WITHOUT PAY | 88 | 2 | 8 | 40 | - | 8 | 146 |
| SPN-SCHOOL PARTNER NOT PAID | - | - | - | - | 3 | 6 | 9 |
| TAR-TARDY | 5 | 0 | 1 | 2 | - | 1 | 8 |
| VAC-VACATION | 938 | 260 | 1,356 | 368 | 144 | 516 | 3,582 |
| VAS-VACATION WHILE SICK | - | - | 20 | - | - | - | 20 |
| *TRAINING | 576 | 48 | - | - | - | 224 | 848 |
| Total Absence Hours | 5,017 | 989 | 4,422 | 1,393 | 540 | 1,839 | 14,199 |
| **ATU Number of Work Force (active) | 105 | 36 | 101 | 43 | 17 | 62 | 364 |
| Full Work Force hours/month | 18,197 | 6,239 | 17,503 | 7,452 | 2,946 | 10,746 | 63,081 |
| Absence as a % of Work Force | 28% | 16% | 25% | 19% | 18% | 17% | 23% |

| OVERTIME TYPE and HOURS | 3941 Blue | 3947 Expo | 3942 Red | 3943 Green | 3944 Gold | 3948 Monrovia | Total |
|--------------------------------------|--------------|--------------|--------------|--------------|-----------|---------------|---------------|
| CTB-COMPENSATORY TIME TO BANK | 212 | 48 | 104 | 53 | - | 179 | 595 |
| OTP-PREM OVERTIME | 4,045 | 1,319 | 3,442 | 1,456 | 23 | 1,017 | 11,302 |
| PHP-PHYSICAL EXAM OT | 4 | - | - | - | - | - | 4 |
| TRO OVERTIME | - | 8 | - | - | - | - | 8 |
| WLO-Worked Lunch Overtime | 134 | 129 | 215 | 88 | 26 | 84 | 674 |
| Total Overtime Hours | 4,395 | 1,503 | 3,760 | 1,598 | 49 | 1,279 | 12,583 |
| Overtime as a % of Work Force | 24% | 24% | 21% | 21% | 2% | 12% | 20% |

*Training hours captured by Instruction Department are added to Absences Report.

**ATU Employee Numbers from ATU Manpower Status Report (last week of the month)



Metro

Note: Overtime also covers other required activities, including Training, Component Overhaul, and Special Events.

RFS Instruction Department Activities

November 2016

LRV Training classes completed during the month of November 2016

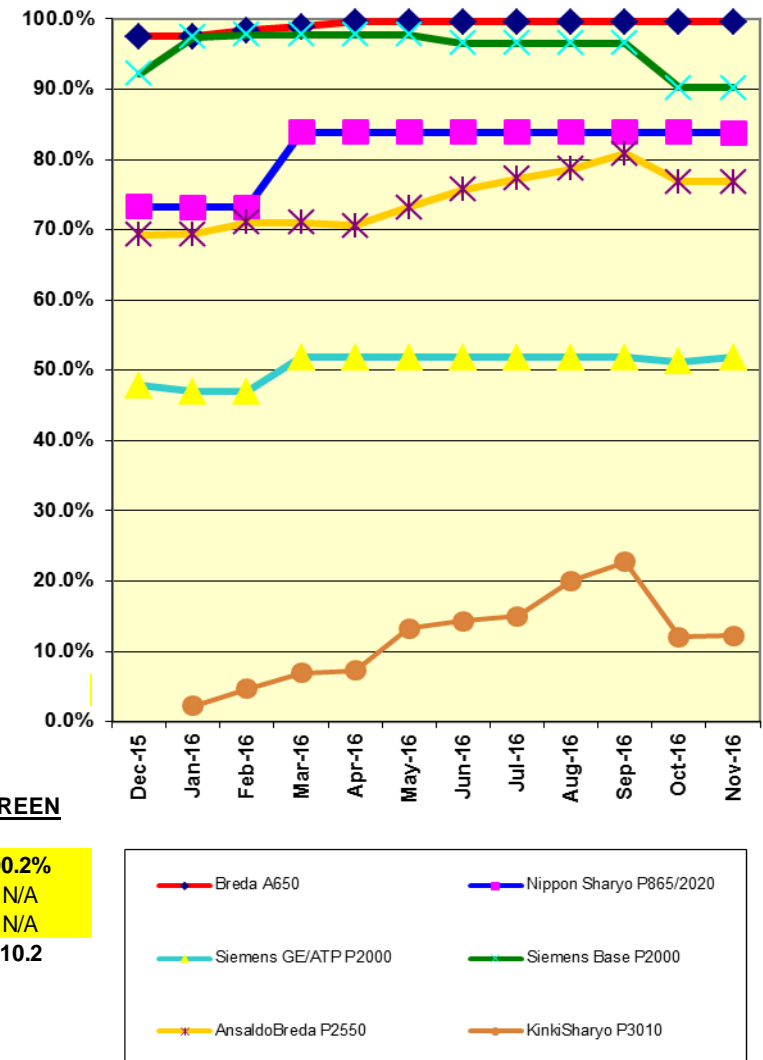
| Description | Course Hours | Student Count | Training Hours |
|--|--------------|---------------|----------------|
| <u>Blue Line Training - (P865/2020 & P2000 LRVs):</u> | | | |
| RFS SIEMENS 2000 FRICTION BRAKES | 48 | 5 | 240 |
| RFS KINKISHARYO INTRO & MAINLINE RESPONSE | 16 | 21 | 336 |
| Total Blue Line Training (Hours): | | | 576 |
| <u>Light Rail Training [In Monrovia (P2550 LRVs) JAC]:</u> | | | |
| RFS ANSALDOBREDA 2550 TRAMMING (PROMEC) | 8 | 3 | 24 |
| RFS ANSALDOBREDA 2550 PROPULSION | 40 | 5 | 200 |
| Total Light Rail Training (Hours): | | | 224 |
| <u>Expo Line Training - (P865/2020, P2000, & P3010 LRVs):</u> | | | |
| RFS KINKISHARYO INTRO & MAINLINE RESPONSE | 16 | 3 | 48 |
| Total Expo Line Training (Hours): | | | 48 |
| <u>Gold Line Training (P2550 LRVs):</u> | | | |
| No vehicle training this month | | | 0 |
| Total Gold Line Training (Hours): | | | 0 |
| <u>Green Line Training (P2000 LRVs):</u> | | | |
| No vehicle training this month | | | 0 |
| Total Green Line Training (Hours): | | | 0 |

Total RFS Instruction for the month of October 2016 (Hours): 848

Core Vehicle Training Completed: **BLUE** **EXPO** **GOLD** **GREEN**

| | | | | |
|---|--------------|--------------|--------------|--------------|
| Percentage of core vehicle training complete: | 83.8% | 33.1% | 76.8% | 90.2% |
| Siemens P2000 training complete: | 51.2% | 45.2% | N/A | N/A |
| KinkiSharyo P3010 training complete: | 0.5% | 18.1% | 23.9% | N/A |
| Average Specialist Rail Experience Level in Years: | 15.2 | 3.7 | 7.0 | 10.2 |

Core Training Completed



Variations caused by new hires, employee transfers, & training completed

RFS Instruction Department Activities

November 2016

HRV & Other Training classes completed during the month of November 2016

| <u>Description</u> | <u>Course Hours</u> | <u>Student Count</u> | <u>Training Hours</u> |
|--|---------------------|----------------------|-----------------------|
| Red Line Training - Breda A650 HRV: | | | |
| NO VEHICLE TRAINING THIS MONTH | 0 | 0 | 0 |
| Total Red Line Training Hours | | | 0 |

| <u>Other Instruction Activities</u> | <u>Curriculum</u> | <u>Administrative</u> | <u>Technical Support</u> | <u>Total</u> |
|--|-------------------|-----------------------|--------------------------|--------------|
| A650 Curriculum, Administrative, and Technical Support | 40 | 16 | 64 | 120 |
| P865/P2020 Curriculum, Administrative, and Technical Support | 8 | 0 | 8 | 16 |
| P2000 Curriculum, Administrative, and Technical Support | 16 | 8 | 24 | 48 |
| P2550 Curriculum, Administrative, and Technical Support | 120 | 24 | 56 | 200 |
| P3010 Curriculum, Administrative, and Technical Support | 240 | 24 | 0 | 264 |
| Time Off (HOL, TOV, & SCK) | | | | 400 |
| Total Other Instruction Activities | | | | 1048 |

| <u>Core Vehicle Training Completed:</u> | <u>RED</u> | JAC Core | <u>JAC</u> |
|--|--------------|----------|---------------|
| Percentage of Core Vehicle Training Complete: | 99.6% | (P2000) | 22.10% |
| | | (P2550) | 19.00% |
| Average Specialist Rail Experience Level in Years: | 12.8 | | 0.4 |