



Rail Fleet Services Monthly Report December 2017

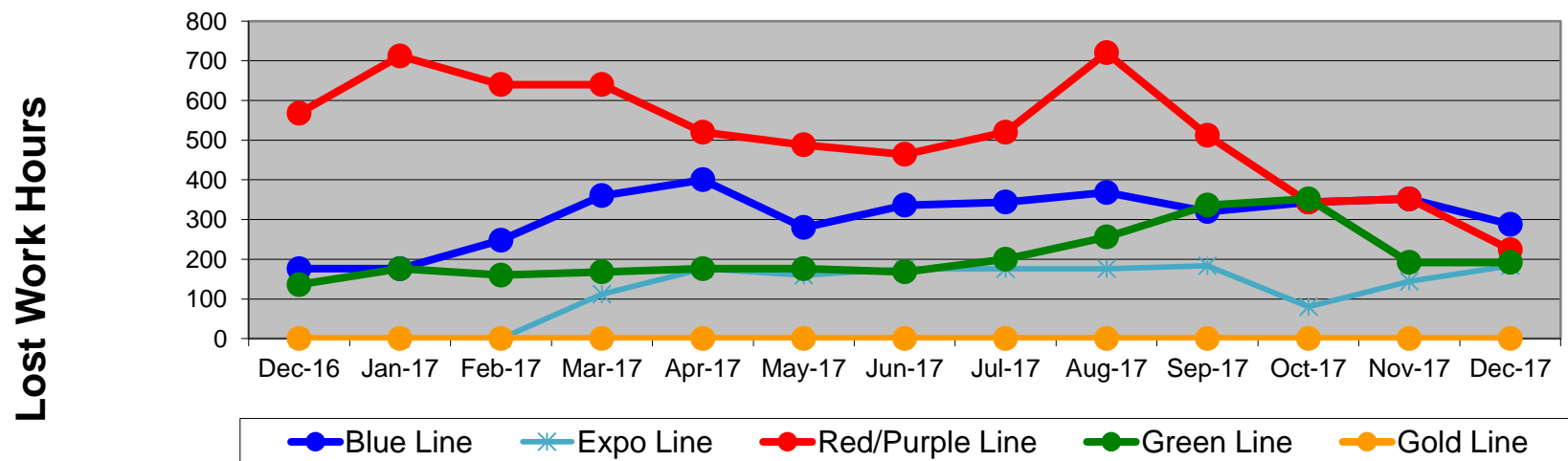
Table of Contents

•	Safety & Cleanliness		
	- Industrial Injuries	Page	3
	- Rail Vehicle Accidents & Major Incidents	Page	4
	- Car Cleanliness	Page	5
•	Customer Service		
	- Service Delivery – AM/PM Pull-Outs	Page	6
	- Vehicle Utilization – Red Line	Page	7
	- Vehicle Utilization – Blue Line & Expo Line	Page	8
	- Vehicle Utilization – Green Line & Gold Line	Page	9
	- All Train Delay Incidents	Page	10
	- Mean Miles Between Failures (Major) & MMBF by Division	Page	11-12
	- Mileage Between Data Range (by month)	Page	13
•	Business Processes		
	- Top Incident Categories	Page	14
	- Major Incidents	Page	15
	- Preventive Maintenance Compliance	Page	16
	- RFS Leader Wrench Turning	Page	17
•	Finance		
	- Vandalism & Graffiti Costs	Page	18
	- Vandalism & Graffiti Pictures	Page	19
	- Labor & Material Costs	Page	20
	- Cost per mile	Page	21
	- Absence vs. Overtime/ %Absence and %Overtime of ATU	Page	22-23
•	Growth		
	- RFS Instruction Department Activities	Page	24-25

Industrial Injuries – Lost Work Hours December 2016-2017

	Dec-16	Jan-17	Feb-17	Mar-17	Apr-17	May-17	Jun-17	Jul-17	Aug-17	Sep-17	Oct-17	Nov-17	Dec-17	13-Month Period
Blue Line	176	176	248	360	400	280	336	344	368	320	344	352	288	3,992
Expo Line	0	0	0	112	176	160	176	176	176	184	80	144	184	1,568
Red/Purple Line	568	712	640	640	520	488	464	520	720	512	344	352	224	6,704
Green Line	136	176	160	168	176	176	168	200	256	336	352	192	192	2,688
Gold Line	0	0	0	0	0	0	0	0	0	0	0	0	0	0
Totals	880	1,064	1,048	1,280	1,272	1,104	1,144	1,240	1,520	1,352	1,120	1,040	888	14,952

Industrial Injuries (lost work hours)



Rail Vehicle Accidents & Major Incidents

December 2016-2017

Repair Costs	Dec-16	Jan-17	Feb-17	Mar-17	Apr-17	May-17	Jun-17	Jul-17	Aug-17	Sep-17	Oct-17	Nov-17	Dec-17	13-Month Period
Blue Line	\$2,352	\$170,311	\$0	\$1,427	\$2,586	\$0	\$15,084	\$632	\$268	\$3,683	\$31,202	\$1,016	\$344	\$228,905
Expo Line	\$381	\$763	\$1,930	\$0	\$1,420	\$0	\$0	\$0	\$191	\$0	\$25,571	\$597	\$321	\$31,174
Red/Purple Line	\$0	\$0	\$1,032	\$0	\$0	\$0	\$0	\$0	\$0	\$0	\$0	\$0	\$0	\$1,032
Green Line	\$0	\$0	\$0	\$0	\$334	\$0	\$0	\$0	\$0	\$0	\$0	\$0	\$0	\$334
Gold Line	\$0	\$3,789	\$15,829	\$1,871	\$191	\$2,692	\$0	\$0	\$0	\$1,343	\$5,751	\$0	\$680	\$32,146
Totals	\$2,733	\$174,863	\$18,791	\$3,298	\$4,531	\$2,692	\$15,084	\$632	\$459	\$5,026	\$62,524	\$1,613	\$1,345	\$293,591

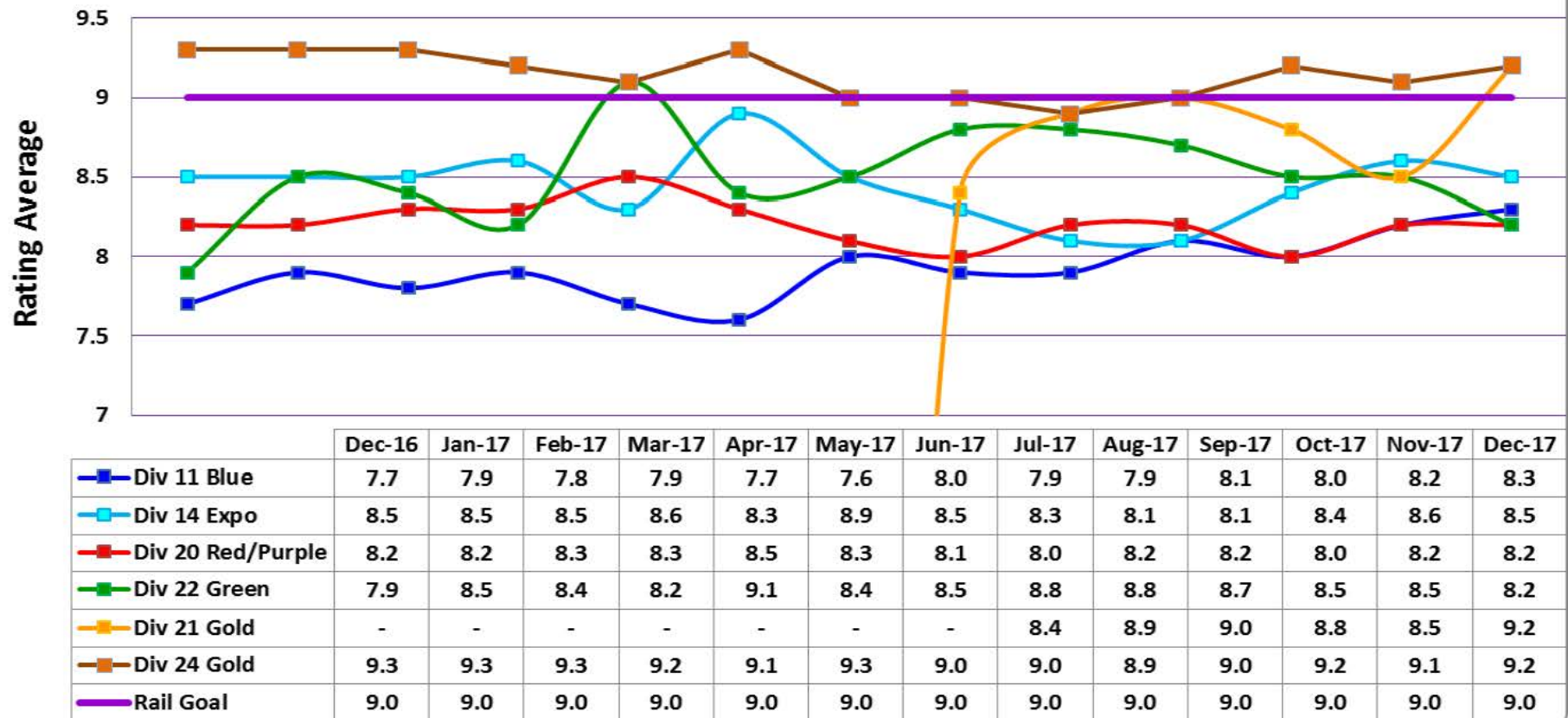
Rail Vehicle Accident Costs - December 2017				
Date	Incident #	Problem Code	Incident Description	Repair Cost
Metro Blue Line				
12/1/17	2940593	Train vs. Pedestrian	A 10-72 was reported at Compton Grade Crossing, Track 1. Operator reported an individual walked in front of train as the train was approaching grade crossing.	\$ 155
12/21/17	2949041	Train vs. Vehicle	A 10-73 was reported at Washington and Maple.	\$ 189
Metro Blue Line Total				\$ 344
Metro Expo Line				
12/2/17	2941231	Train vs. Vehicle	A 10-73 was reported at Exposition Blvd. and Raymond Ave.	\$ 321
Metro Expo Line Total				\$ 321
Metro Gold Line				
12/14/17	2946109	Train vs. Vehicle	A 10-73 was reported at Del Mar Grade Crossing, Track 1 NB.	\$ 680
Metro Gold Line Total				\$ 680
Grand Total				\$ 1,345
10-71 = Train vs. Object/ 10-72 = Train vs. Pedestrian/ 10-73 = Train vs. Vehicle/ 10-74 = Train vs. MTA Vehicle/ 10-75 = Derailment				



Note: Repair costs are only the expenses captured during the time period of the report. Actual costs may be significantly higher, if repairs are spread out over several months.

Rail Vehicle – Car Cleanliness December 2016-2017

Car Cleanliness Monthly Report



Service Delivery December 2017

Blue Line Fleet Size: 90

<u>Pull Out</u>	<u>Vehicles Required</u>	<u>Average Available</u>	<u>% Up (Down)</u>
Weekday:	66	72	109%
Weekend:	26	59	227%

Monthly Mileage: 490,650

Expo Line Fleet Size: 55

<u>Pull Out</u>	<u>Vehicles Required</u>	<u>Average Available</u>	<u>% Up (Down)</u>
Weekday:	42	41	98%
Weekend:	30	37	123%

Monthly Mileage: 274,454

Red/Purple Line Fleet Size: 98

<u>Pull Out</u>	<u>Vehicles Required</u>	<u>Average Available</u>	<u>% Up (Down)</u>
Weekday:	64	72	113%
Weekend:	40	60	150%

Monthly Mileage: 592,978

Green Line Fleet Size: 38

<u>Pull Out</u>	<u>Vehicles Required</u>	<u>Average Available</u>	<u>% Up (Down)</u>
Weekday:	26	26	100%
Weekend:	14	19	136%

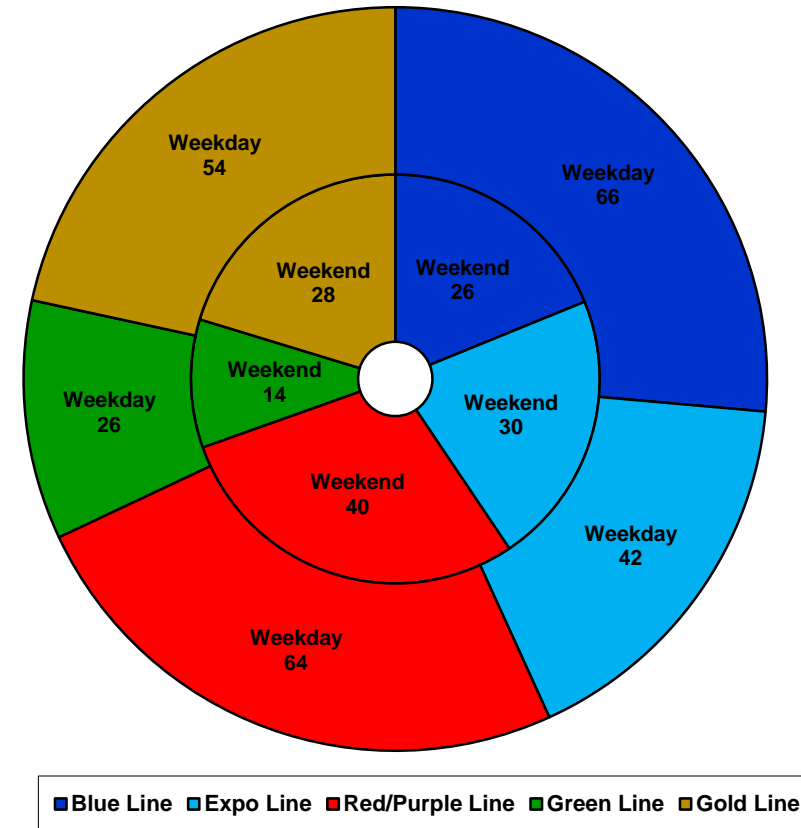
Monthly Mileage: 260,219

Gold Line Fleet Size: 67

<u>Pull Out</u>	<u>Vehicles Required</u>	<u>Average Available</u>	<u>% Up (Down)</u>
Weekday (Div 21):	10	10	100%
Weekday (Div 24):	44	44	100%
Weekend (Div 24):	28	40	143%

***Monthly Mileage: 592,865**

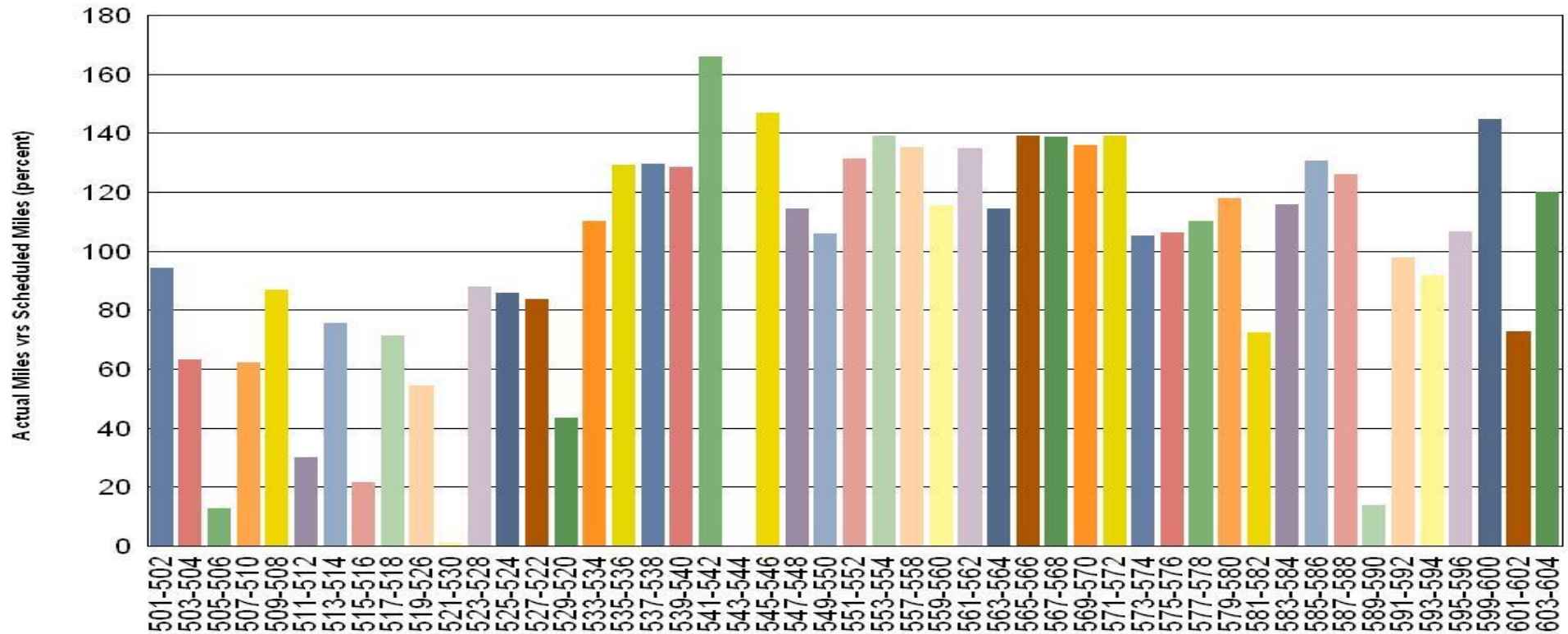
*** Gold Line monthly mileage includes Division 21 and 24.**



NOTES: Standby trains not included in vehicle requirements

Vehicle Utilization December 2017

Metro Red/Purple Line (98 Cars)



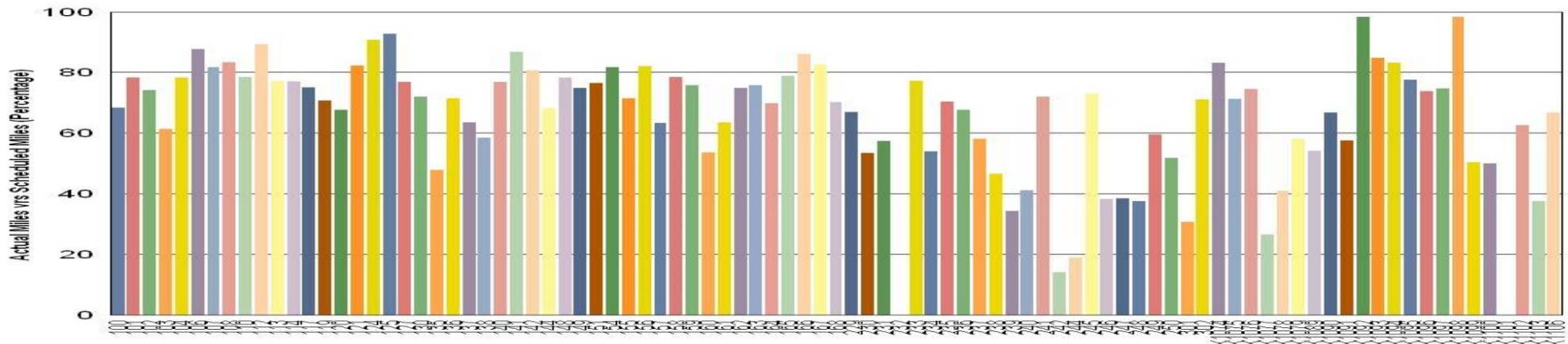
Red/Purple Line:

The following cars were out of service due to:

- Car # 505-506 – Coupler Overhaul Campaign
- Car # 511-512 – Friction Brake Overhaul Campaign
- Car # 515-516 – Propulsion Fault
- Car # 521-530 – Aux Power Fault
- Car # 543-544 – Interior Renovation Campaign
- Car # 589-590 – Propulsion Fault

Vehicle Utilization December 2017

Metro Blue Line (90 Cars)



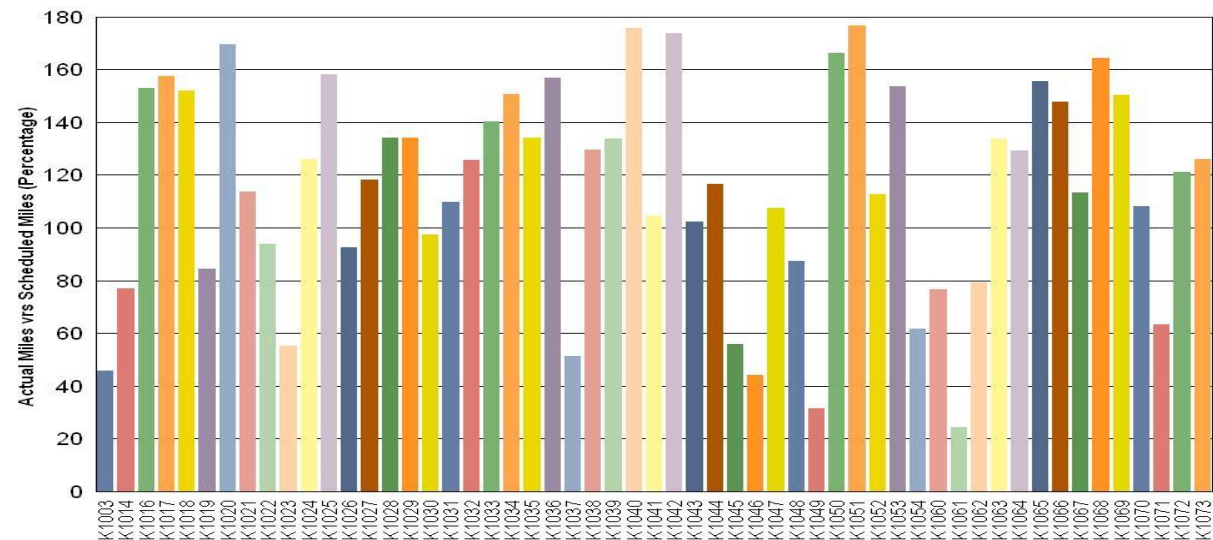
Blue Line: The following cars were out of service due to:

- Car # 232 – Off the Property for Midlife Overhaul
- Car # 239 – Door Overhaul
- Car # 242 – Exterior Paint Restoration
- Car # 244 – Exterior Paint Restoration
- Car # 246 – Propulsion Fault / Work Orders
- Car # 247 – Dynamic Brake Fault
- Car # 248 – 45K Inspection / Work Orders
- Car # 301 – Door Wiring Issue
- Car # K1077 – Warranty Work Orders
- Car # K1101 – Delivered to Div 11 on 01-05-2018
- Car # K1103 – Warranty Work Orders

Expo Line: The following cars were out of service due to:

- Car # K1049 – KI Performing Engineering
- Car # K1061 – Windshield Holes Improperly Drilled

Metro Expo Line (55 Cars)



Vehicle Utilization December 2017

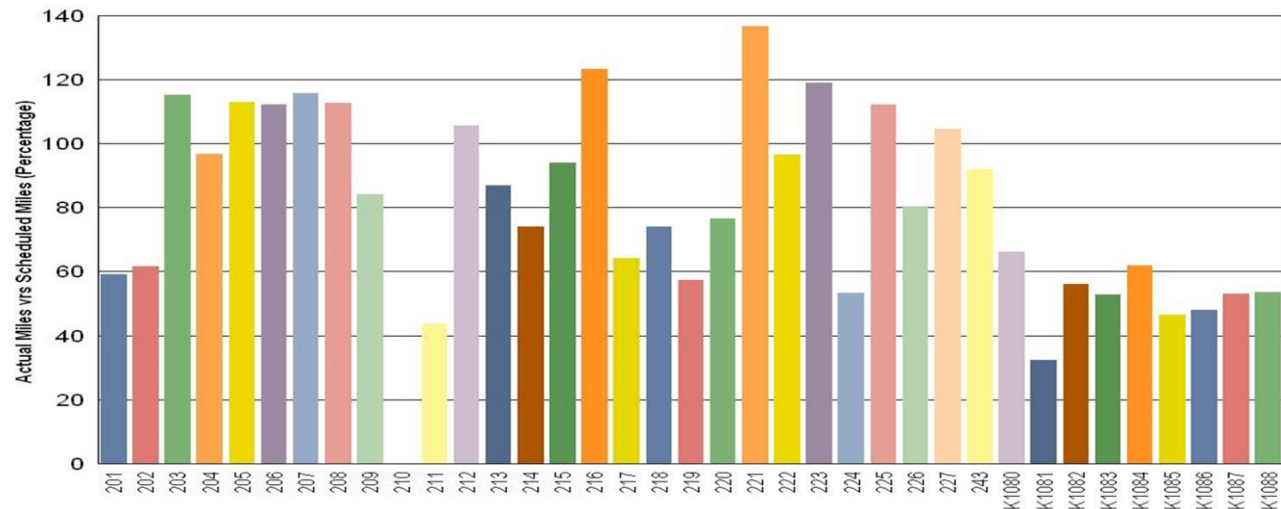
Green Line:

The following cars were out of service due to:

Car # 210 – Midlife Overhaul

Car # K1081 – Car was transferred from the Blue Line
December 19th.

Metro Green Line (38 Cars)



Gold Line:

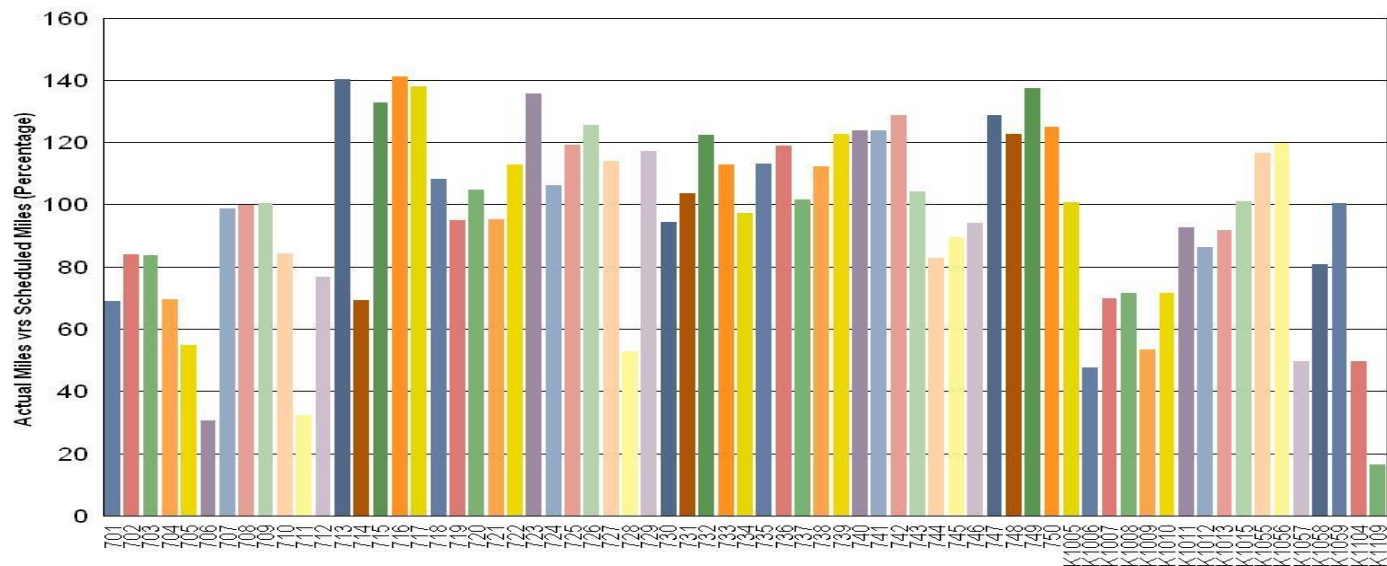
The following cars were out of service due to:

Car # 706– 120K PM Inspection Mileage Hold

Car # 711– Propulsion Repairs and 120K PM
Inspection

Car # K1109 – Newly Commissioned Car (not
in-service for the complete month)

Metro Gold Line (67 Cars)

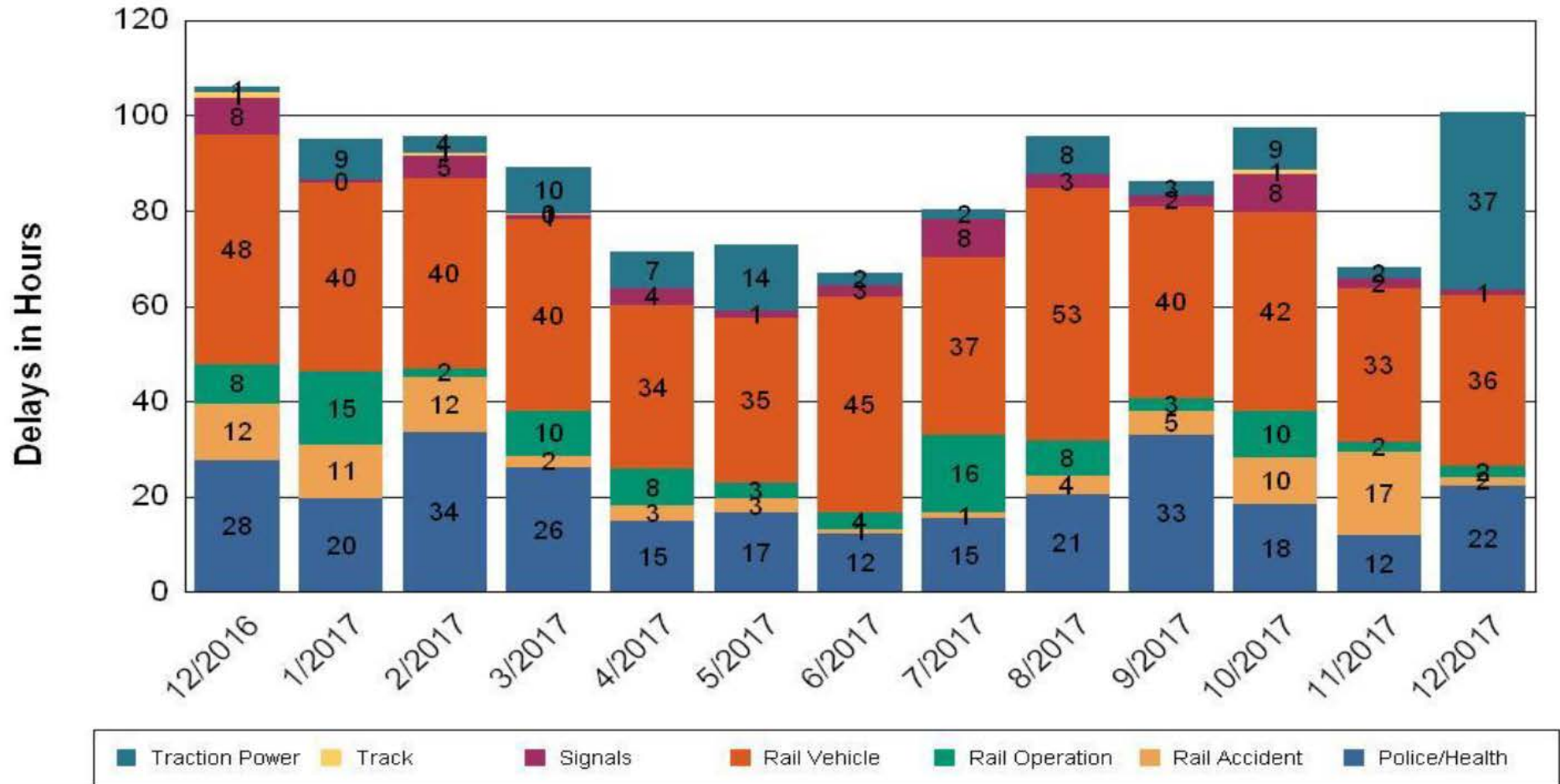


•Percentage includes an average 4% mileage deduction for yard mileage and vehicle testing.

All Train Delays (Hours) December 2016-2017

All Train Delays

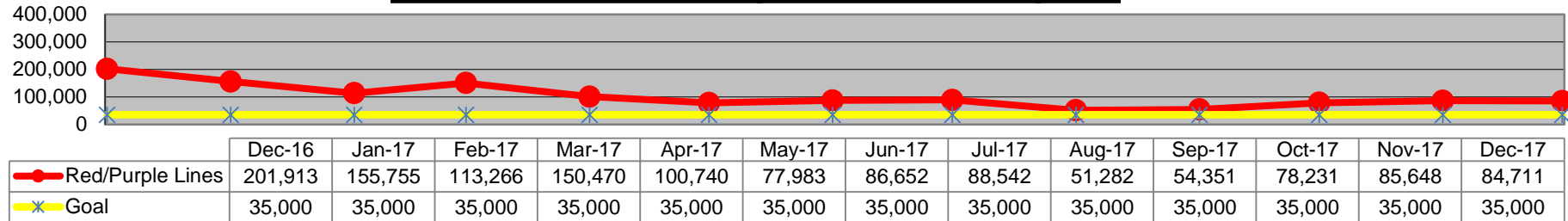
Totals Include the delay to all trains involved (not just the primary incident)



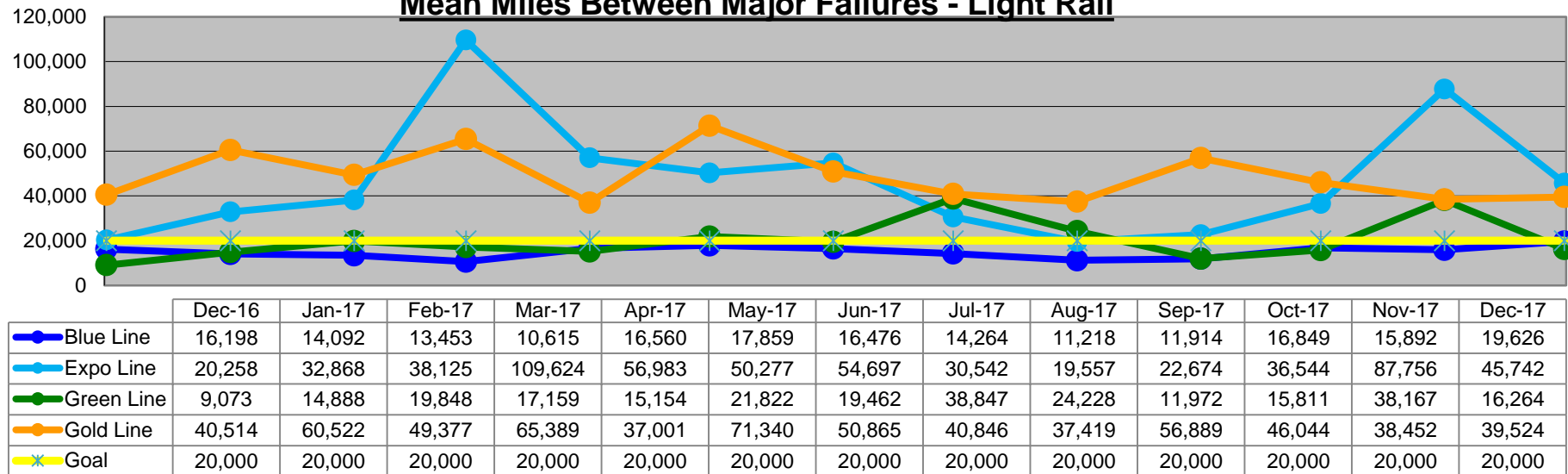
Mean Miles Between Major Failures (MMBF)

December 2016-2017

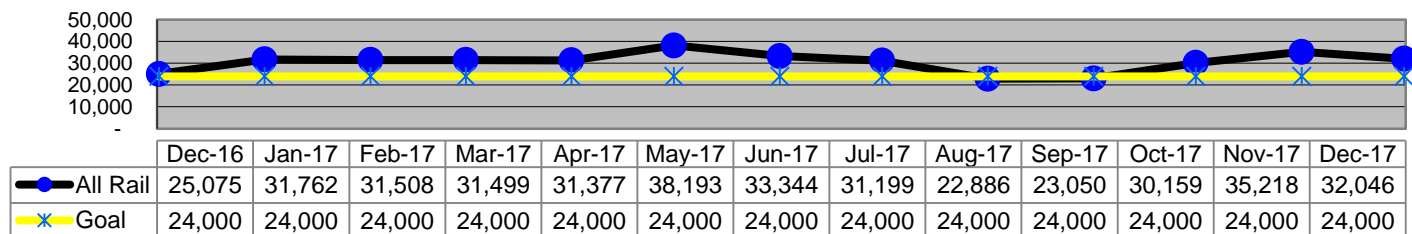
Mean Miles Between Major Failures - Heavy Rail



Mean Miles Between Major Failures - Light Rail



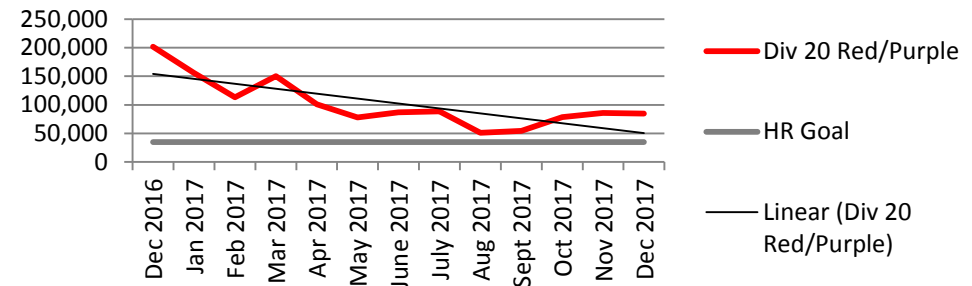
Mean Miles Between Major Failures (all)



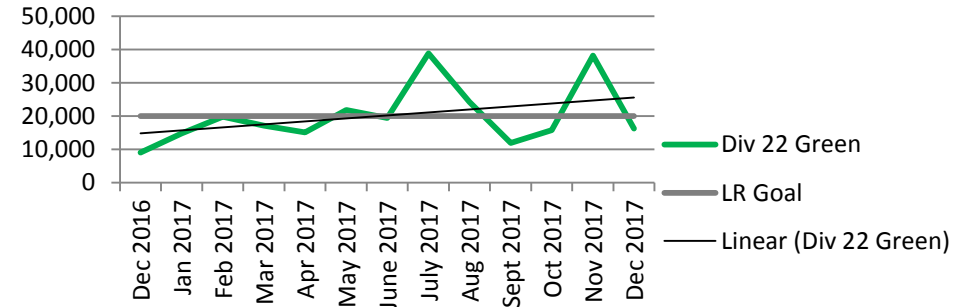
MMBF by Division December 2016-2017

Month	Div 11 Blue	Div 14 Expo	Div 20 Red/Purple	Div 22 Green	Div 21/24 Gold	LR Goal	HR Goal
Dec 2016	16,198	20,258	201,913	9,073	40,514	20,000	35,000
Jan 2017	13,950	33,309	155,755	14,888	60,522	20,000	35,000
Feb 2017	13,453	38,125	113,266	19,848	49,377	20,000	35,000
Mar 2017	10,615	109,624	150,470	17,159	65,389	20,000	35,000
Apr 2017	16,560	56,983	100,740	15,154	37,001	20,000	35,000
May 2017	17,859	50,277	77,983	21,822	71,340	20,000	35,000
June 2017	16,476	54,697	86,652	19,462	50,865	20,000	35,000
July 2017	14,264	30,542	88,542	38,847	40,846	20,000	35,000
Aug 2017	11,218	19,557	51,282	24,228	37,419	20,000	35,000
Sept 2017	11,914	22,674	54,351	11,972	56,889	20,000	35,000
Oct 2017	16,849	36,544	78,231	15,811	46,044	20,000	35,000
Nov 2017	15,892	87,756	85,648	38,167	38,452	20,000	35,000
Dec 2017	19,626	45,742	84,711	16,264	39,524	20,000	35,000

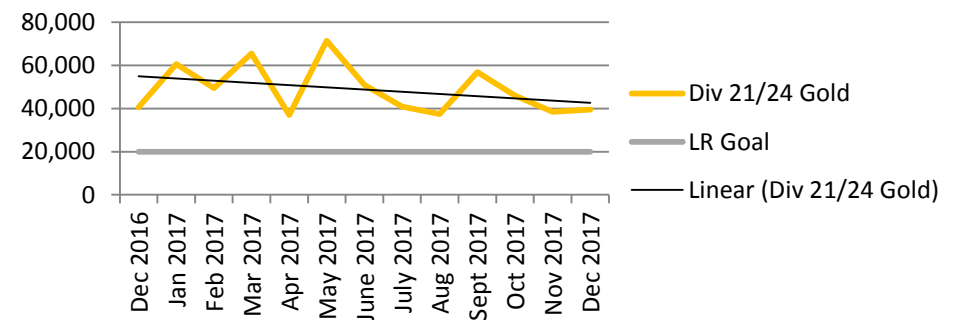
MRL MMBF



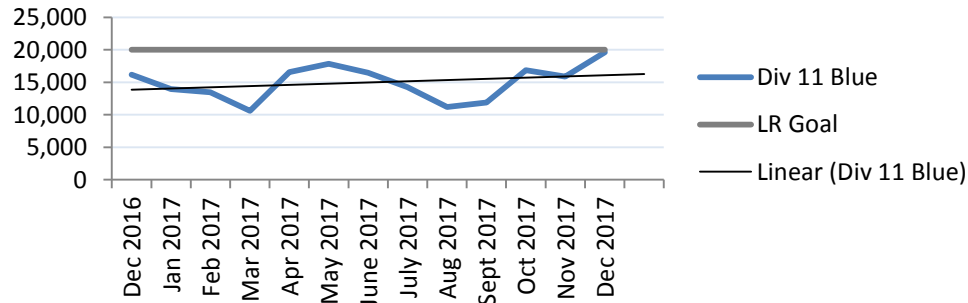
MGL MMBF



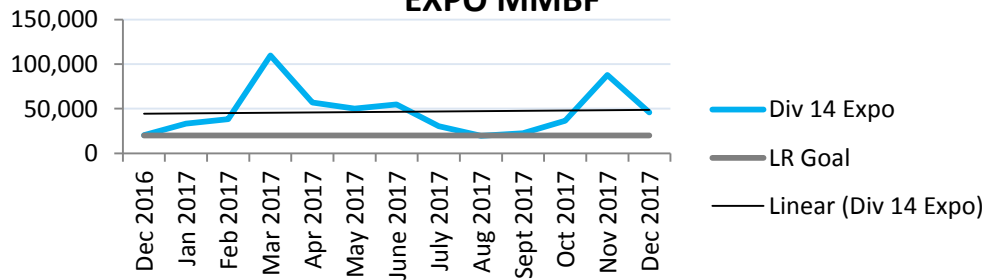
MGDL MMBF



MBL MMBF

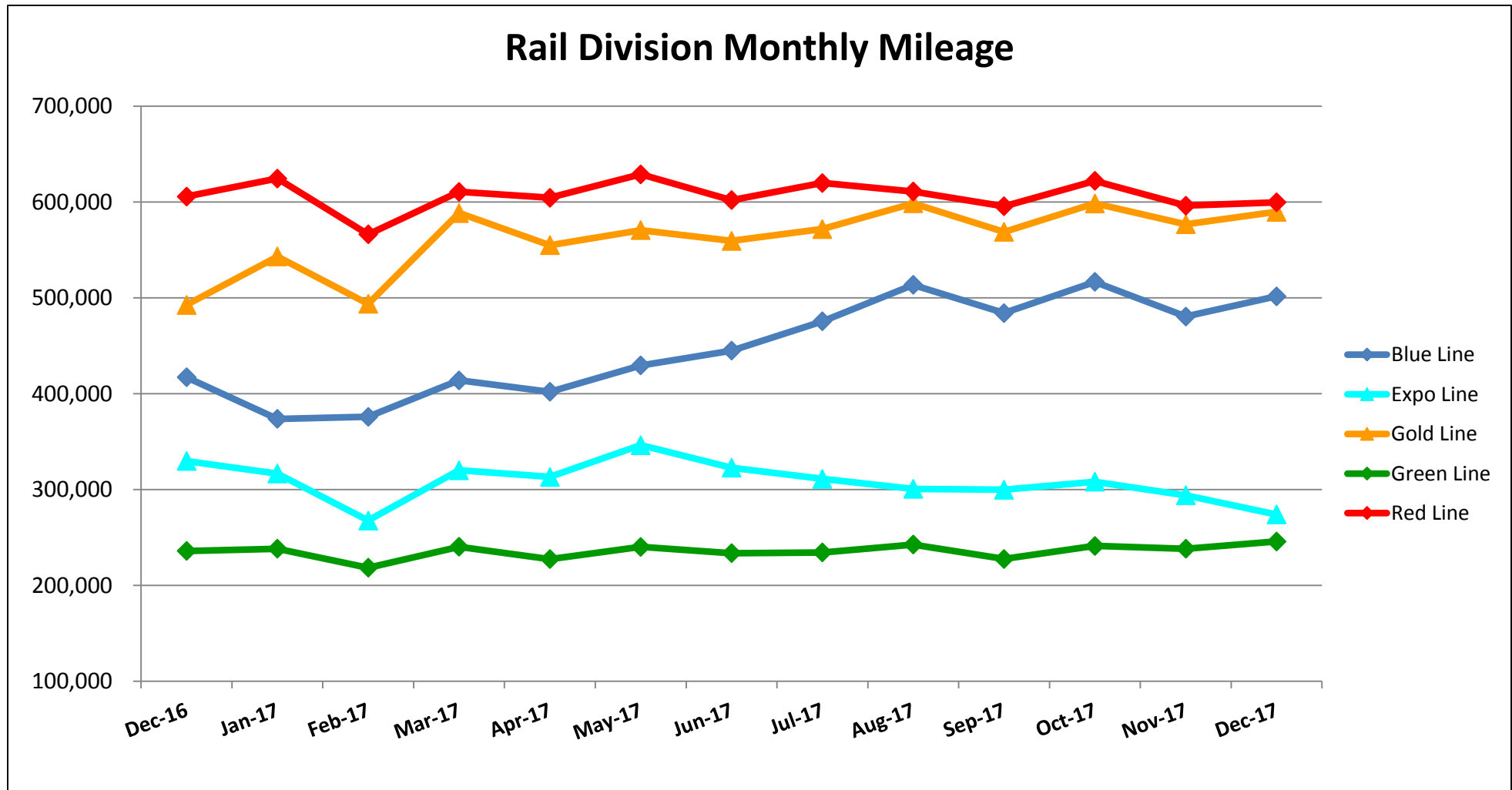


EXPO MMBF



Mileage Between Data Range (by month)

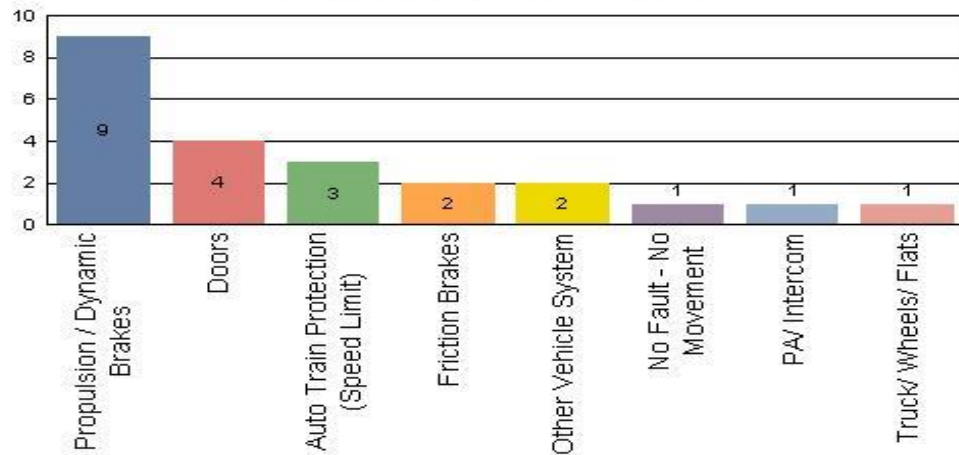
December 2016-2017



Top Incident Categories December 2017

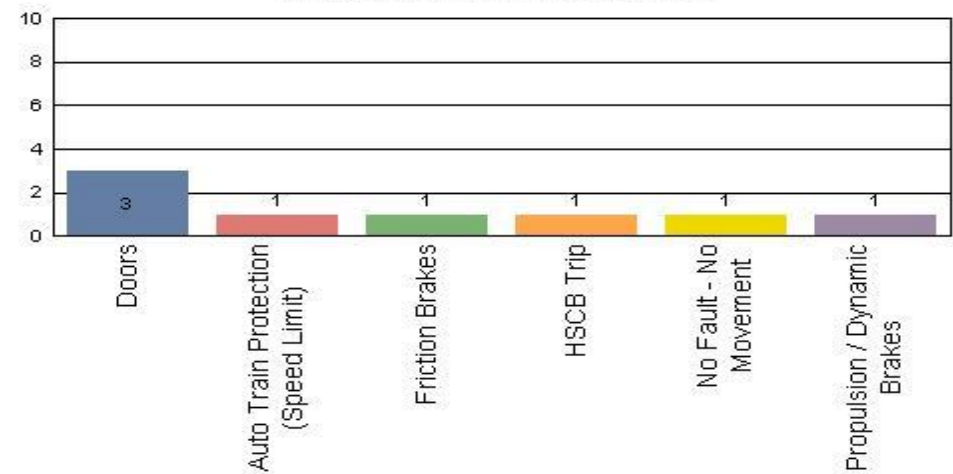
Metro Blue Line (Div 11)

Top Incident Categories



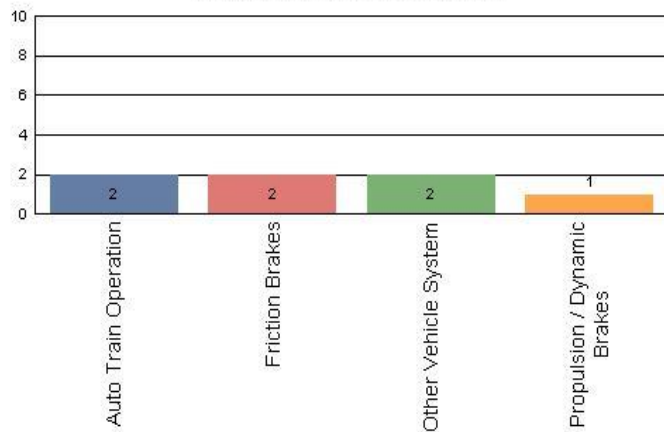
Metro Expo Line (Div 14)

Top Incident Categories



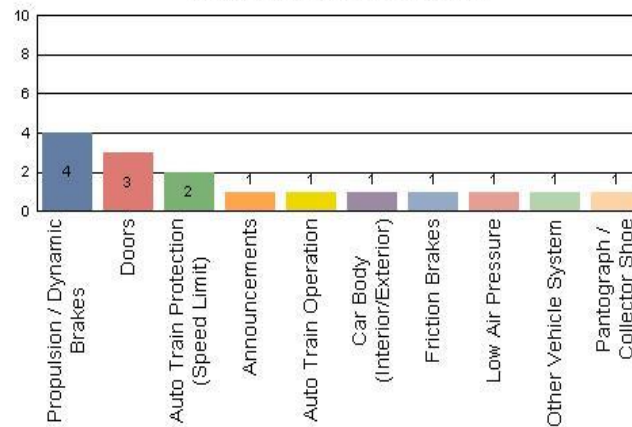
Metro Red/Purple Line (Div 20)

Top Incident Categories



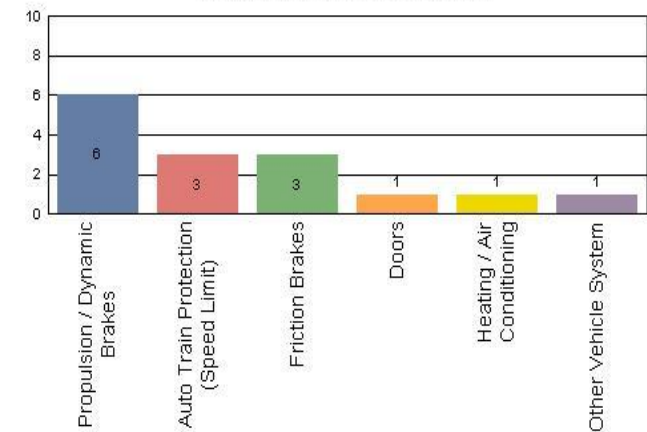
Metro Green Line (Div 22)

Top Incident Categories



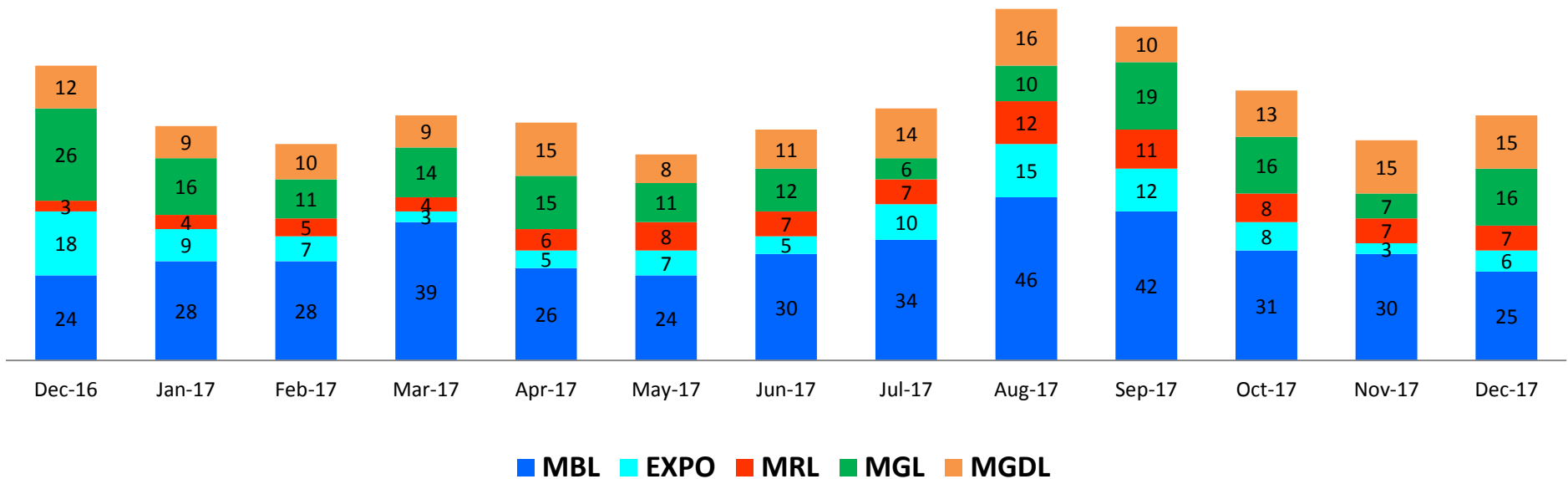
Metro Gold Line (Div 21 & Div 24)

Top Incident Categories



Major Incidents December 2016-2017

Numbers of Major System Failures (by Line)



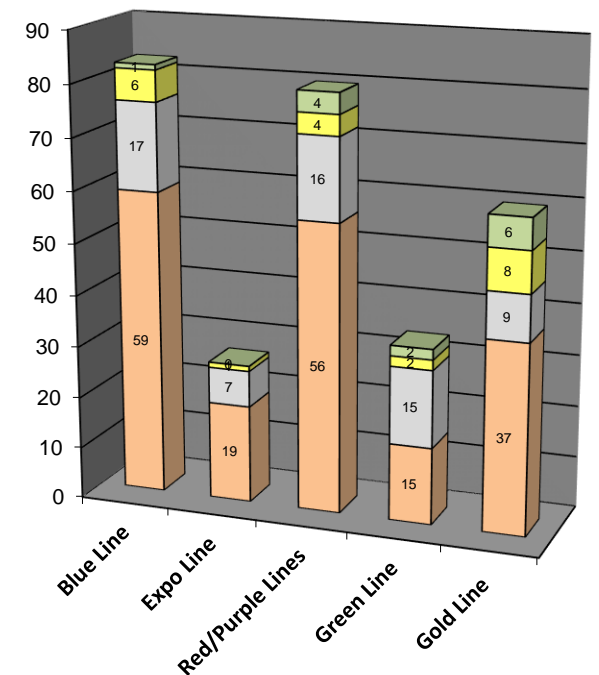
Preventive Maintenance Compliance

December 2016-2017

PM Compliance	Dec-16	Jan-17	Feb-17	Mar-17	Apr-17	May-17	Jun-17	Jul-17	Aug-17	Sep-17	Oct-17	Nov-17	Dec-17
Blue Line	100%	100%	100%	100%	100%	100%	100%	100%	100%	100%	100%	100%	100%
Expo Line	100%	100%	100%	100%	100%	100%	100%	100%	100%	100%	100%	100%	100%
Red/Purple Lines	100%	100%	100%	100%	100%	100%	100%	100%	100%	100%	100%	100%	100%
Green Line	100%	100%	100%	100%	100%	100%	100%	100%	100%	100%	100%	100%	100%
Gold Line	100%	100%	100%	100%	100%	100%	98%	100%	100%	100%	100%	100%	100%

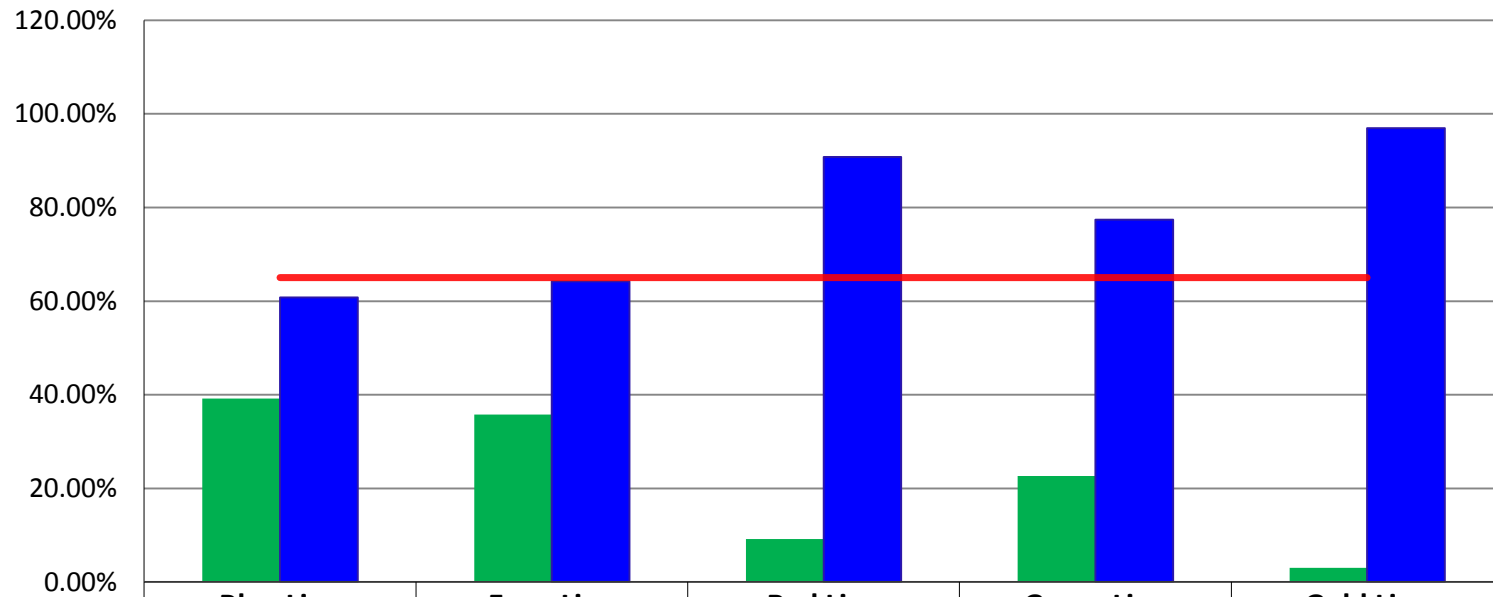
Number of Preventive Maintenance Inspections - December 2017					
Line	A level	B level	C level	D level	Totals
Blue Line	59	17	6	1	83
Expo Line	19	7	1	0	27
Red/Purple Lines	56	16	4	4	80
Green Line	15	15	2	2	34
Gold Line	37	9	8	6	60
Totals:	186	64	21	13	284

Explanation of PM Inspection levels		Miles			
Line	Type	A level	B level	C level	D level
Blue/Expo Lines	P865/P2020	5,000	15,000	30,000	60,000
Blue/Expo Lines	P2000	7,500	22,500	45,000	90,000
Red/Purple Lines	A650	7,500	22,500	45,000	90,000
Green Line	P2000	7,500	22,500	45,000	90,000
Gold Line	P2550	10,000	30,000	60,000	120,000
Gold/Expo Lines	P3010	10,000	30,000	60,000	120,000



RFS Leader Wrench Turning December 2017

RFS - Leader Wrench Turning December 2017



	Blue Line	Expo Line	Red Line	Green Line	Gold Line
Non-Wrench Turning	39.19%	35.80%	9.20%	22.63%	3.01%
Wrench Turning	60.81%	64.20%	90.80%	77.37%	96.99%
Goal	65%	65%	65%	65%	65%

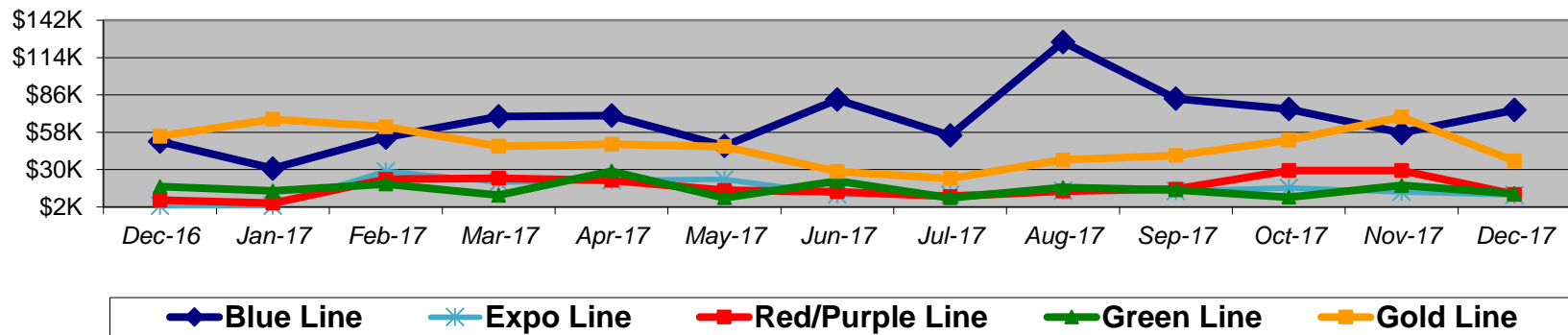
.leader

Vandalism & Graffiti Report

December 2016-2017

Graffiti Costs

	Dec-16	Jan-17	Feb-17	Mar-17	Apr-17	May-17	Jun-17	Jul-17	Aug-17	Sep-17	Oct-17	Nov-17	Dec-17	13-Month Period
Blue Line	\$51K	\$31K	\$54K	\$70K	\$71K	\$48K	\$83K	\$56K	\$126K	\$83K	\$75K	\$58K	\$75K	\$879K
Expo Line	\$3K	\$3K	\$29K	\$21K	\$22K	\$23K	\$11K	\$11K	\$14K	\$14K	\$16K	\$13K	\$11K	\$192K
Red/Purple Line	\$7K	\$5K	\$23K	\$24K	\$22K	\$14K	\$13K	\$10K	\$14K	\$15K	\$29K	\$29K	\$11K	\$218K
Green Line	\$17K	\$14K	\$19K	\$11K	\$29K	\$9K	\$21K	\$9K	\$17K	\$15K	\$9K	\$18K	\$12K	\$200K
Gold Line	\$55K	\$68K	\$62K	\$48K	\$49K	\$47K	\$29K	\$23K	\$37K	\$41K	\$52K	\$69K	\$37K	\$617K
Totals:	\$133K	\$121K	\$187K	\$172K	\$193K	\$141K	\$158K	\$109K	\$208K	\$168K	\$182K	\$188K	\$146K	\$2,106K



December 2017 Vandalism & Graffiti - All Rail				
	Qty	Labor	Materials	Totals
Windows Replaced	44	\$ 10,017	\$ 26,339	\$ 36,356
Vandal Shields Replaced	377	\$ 12,450	\$ 6,852	\$ 19,302
Seats Cleaned	119	\$ 520	\$ 62	\$ 582
Seats Inserts Replaced	729	\$ 36,067	\$ 26,310	\$ 62,377
Graffiti Removal - Other	1,062	\$ 17,710	\$ 3,350	\$ 21,060
Repainting Panels	195	\$ 6,143	\$ -	\$ 6,143
Totals	2,526	\$ 82,907	\$ 62,913	\$ 145,820

Vandalism & Graffiti Pictures

December 2017

Blue Line



Graffiti Cleaning

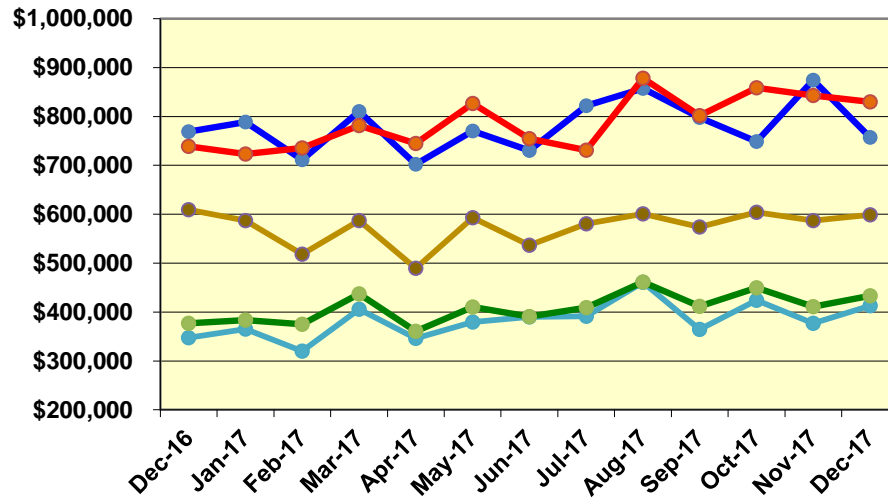


Green Line

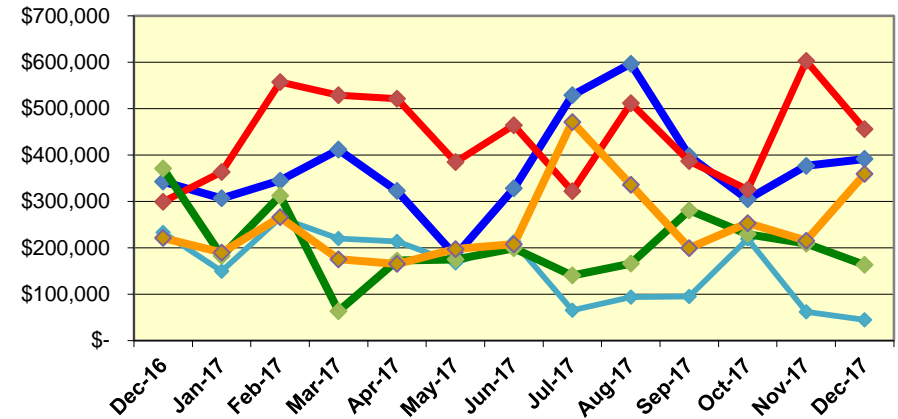


Labor and Material Costs December 2016-2017

Labor Costs



Material Costs



Dec-16	Jan-17	Feb-17	Mar-17	Apr-17	May-17	Jun-17	Jul-17	Aug-17	Sep-17	Oct-17	Nov-17	Dec-17
--------	--------	--------	--------	--------	--------	--------	--------	--------	--------	--------	--------	--------

Labor Costs

Blue Line	\$ 768,756	\$ 788,785	\$ 711,354	\$ 810,012	\$ 702,374	\$ 770,245	\$ 730,183	\$ 822,077	\$ 857,616	\$ 797,683	\$ 749,009	\$ 874,166	\$ 757,379
Expo Line	\$ 347,280	\$ 365,354	\$ 320,019	\$ 405,656	\$ 346,398	\$ 379,871	\$ 389,878	\$ 391,095	\$ 461,075	\$ 364,430	\$ 423,859	\$ 377,003	\$ 413,302
Red/Purple Lines	\$ 738,672	\$ 723,038	\$ 735,394	\$ 781,595	\$ 744,460	\$ 826,461	\$ 754,862	\$ 730,783	\$ 878,453	\$ 801,722	\$ 858,679	\$ 843,202	\$ 829,663
Green Line	\$ 376,933	\$ 383,591	\$ 374,747	\$ 437,154	\$ 360,314	\$ 410,146	\$ 390,662	\$ 409,313	\$ 461,320	\$ 411,714	\$ 449,839	\$ 410,869	\$ 433,318
Gold Line	\$ 609,215	\$ 587,313	\$ 518,524	\$ 586,949	\$ 489,634	\$ 593,070	\$ 536,404	\$ 580,341	\$ 600,583	\$ 574,080	\$ 603,761	\$ 586,885	\$ 598,943
Totals	\$ 2,840,856	\$ 2,848,080	\$ 2,660,038	\$ 3,021,365	\$ 2,643,180	\$ 2,979,794	\$ 2,801,989	\$ 2,933,607	\$ 3,259,046	\$ 2,949,629	\$ 3,085,146	\$ 3,092,125	\$ 3,032,606

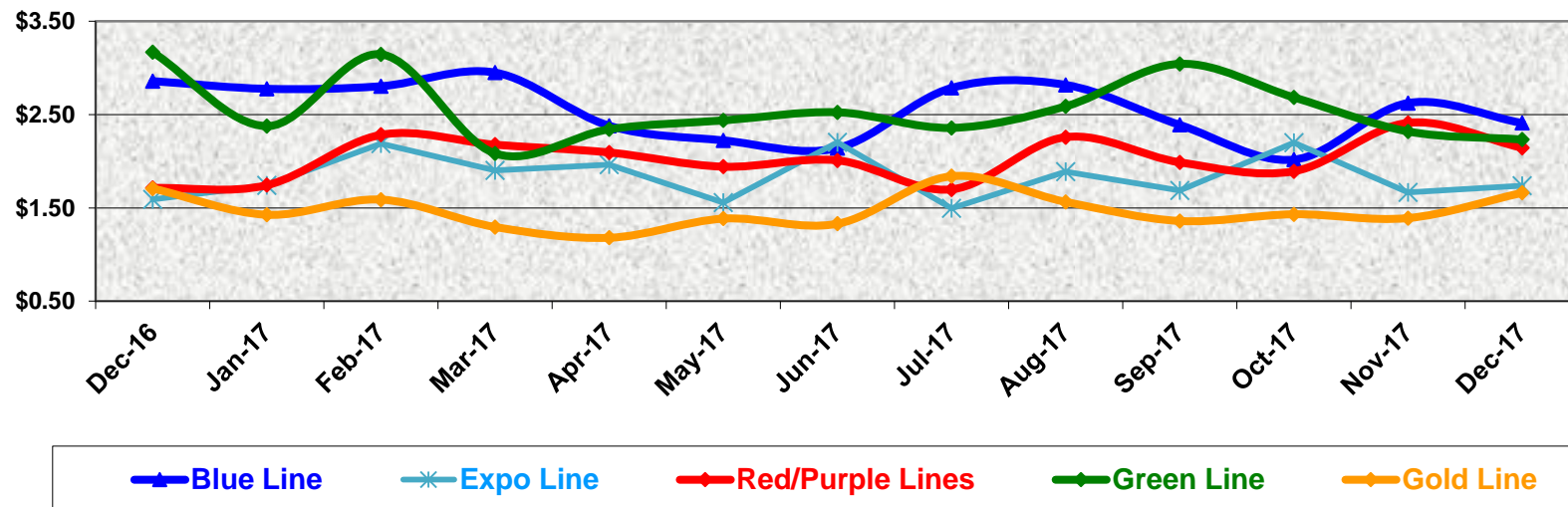
Material Costs

Blue Line	\$ 342,695	\$ 306,710	\$ 344,931	\$ 411,541	\$ 322,424	\$ 182,846	\$ 328,206	\$ 529,007	\$ 596,865	\$ 397,951	\$ 304,627	\$ 376,903	\$ 391,572
Expo Line	\$ 233,001	\$ 149,260	\$ 264,561	\$ 219,980	\$ 213,435	\$ 167,428	\$ 212,682	\$ 65,432	\$ 93,233	\$ 94,730	\$ 218,980	\$ 61,966	\$ 44,504
Red/Purple Lines	\$ 299,157	\$ 363,192	\$ 557,616	\$ 528,820	\$ 521,242	\$ 384,776	\$ 463,957	\$ 321,863	\$ 511,576	\$ 386,990	\$ 325,604	\$ 602,668	\$ 456,278
Green Line	\$ 370,755	\$ 182,518	\$ 312,113	\$ 63,371	\$ 172,269	\$ 174,969	\$ 199,040	\$ 140,168	\$ 165,820	\$ 280,752	\$ 229,311	\$ 208,844	\$ 163,235
Gold Line	\$ 221,172	\$ 189,520	\$ 265,930	\$ 175,047	\$ 165,012	\$ 197,220	\$ 207,555	\$ 471,378	\$ 336,025	\$ 199,318	\$ 253,138	\$ 215,172	\$ 359,058
Totals	\$ 1,466,779	\$ 1,191,200	\$ 1,745,150	\$ 1,398,760	\$ 1,394,383	\$ 1,107,239	\$ 1,411,440	\$ 1,527,848	\$ 1,703,519	\$ 1,359,742	\$ 1,331,660	\$ 1,465,553	\$ 1,414,648

Cost Per Mile December 2016-2017

Cost per mile:	Dec-16	Jan-17	Feb-17	Mar-17	Apr-17	May-17	Jun-17	Jul-17	Aug-17	Sep-17	Oct-17	Nov-17	Dec-17	Average
Blue Line	\$2.86	\$2.78	\$2.80	\$2.95	\$2.38	\$2.22	\$2.14	\$2.79	\$2.82	\$2.39	\$2.02	\$2.62	\$2.41	\$2.55
Expo Line	\$1.59	\$1.74	\$2.19	\$1.90	\$1.96	\$1.56	\$2.20	\$1.49	\$1.89	\$1.69	\$2.20	\$1.67	\$1.74	\$1.83
Red/Purple Lines	\$1.71	\$1.74	\$2.28	\$2.18	\$2.09	\$1.94	\$2.01	\$1.70	\$2.26	\$1.99	\$1.89	\$2.41	\$2.14	\$2.03
Green Line	\$3.17	\$2.38	\$3.15	\$2.08	\$2.34	\$2.44	\$2.52	\$2.36	\$2.59	\$3.04	\$2.68	\$2.32	\$2.23	\$2.56
Gold Line	\$1.71	\$1.43	\$1.59	\$1.29	\$1.18	\$1.38	\$1.33	\$1.84	\$1.56	\$1.36	\$1.43	\$1.39	\$1.66	\$1.47

Cost per Mile



ATU Absences vs. Overtime

December 2017

ABSENCE TYPE and HOURS	3941 Blue	3947 Expo	3942 Red	3943 Green	3944 Gold	3948 Monrovia	Total
AWP-ABSENT W/O PERMISSION	-	-	-	-	-	8	8
BER-BEREAVEMENT	24	-	-	-	-	-	24
CTO-COMPENSATORY TIME OFF	335	118	292	112	12	202	1,070
CUT-EMPLOYEE LEAVES EARLY	2	2	-	-	-	-	3
DSL-DISABILITY LEAVE/LONG	56	168	184	520	-	-	928
EFH-EMG. FLOAT HOL.	24	-	104	32	16	40	216
ETO-EXCUSED TIME OFF	90	90	53	9	2	32	276
FMI-FAM IND INJURY	-	-	112	176	-	-	288
FML-FAMILY CARE LEAVE	496	8	292	286	160	483	1,724
FMS-FAMILY LEAVE SICK	77	-	173	56	72	187	565
HLF-HOLIDAY FLOATING	376	80	304	160	16	244	1,180
HNP-HOLIDAY NOT PAID	8	-	-	16	-	-	24
HOL-HOLIDAY LEGAL	616	224	656	160	106	384	2,146
II-INDUSTRIAL INJURY	-	-	-	-	-	16	16
IS-INVESTIGATIVE SUSPENSION	168	-	-	106	-	-	274
JUR-JURY DUTY	48	24	-	-	-	24	96
LC1-LABOR CODE 233	84	68	235	120	8	200	715
LTi-OCCPIL/LONGTRM INJ LEAVE	288	184	224	192	-	-	888
MLN-MILITARY ABSENCE-UNPAID	-	-	8	-	-	-	8
OWP-OFF WITH PERMISSION	8	-	-	-	-	-	8
RTO-REQUESTED TIME OFF-NO PAY	92	-	20	-	8	2	122
SCK-SICK PAY	329	112	253	112	72	212	1,090
SCW-SICK WITHOUT PAY	104	96	24	92	3	20	339
SPN-SCHOOL PARTNER NOT PAID	-	-	-	-	8	-	8
SUS-DISCIPLINARY SUSPENSION	-	-	-	40	-	-	40
TAR-TARDY	3	1	1	2	0	1	8
UNP-UNION BUS PAID	-	16	-	-	-	-	16
VAC-VACATION	1,373	344	1,512	536	192	694	4,651
VAS-VACATION WHILE SICK	-	-	20	-	-	-	20
*TRAINING	271	35	76	463	22	57	924
Total Absence Hours	4,871	1,569	4,544	3,189	696	2,805	17,674
**ATU Number of Work Force (active)	107	40	106	43	17	59	372
Full Work Force hours/month	18,543	6,932	18,370	7,452	2,946	10,226	64,468
Absence as a % of Work Force	26%	23%	25%	43%	24%	27%	27%

OVERTIME TYPE and HOURS	3941 Blue	3947 Expo	3942 Red	3943 Green	3944 Gold	3948 Monrovia	Total
CTB-COMPENSATORY TIME TO BANK	160	68	171	58	8	74	539
OTP-PREM OVERTIME	3,837	2,118	3,801	2,498	45	1,275	13,574
WLO-Worked Lunch Overtime	135	132	276	107	21	96	765
Total Overtime Hours	4,131	2,318	4,248	2,662	74	1,445	14,878
Overtime as a % of Work Force	22%	33%	23%	36%	3%	14%	23%

*Training hours captured by Instruction Department are added to Absences Report.

**ATU Employee Numbers from ATU Manpower Status Report (last week of the month)

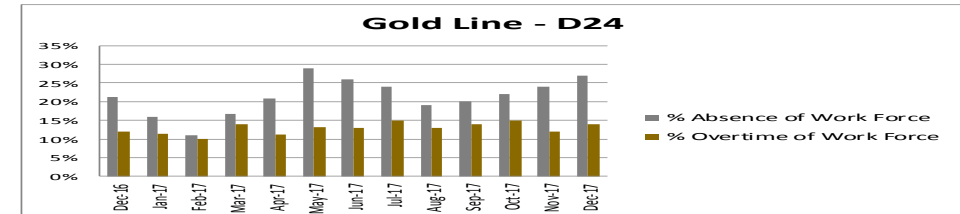
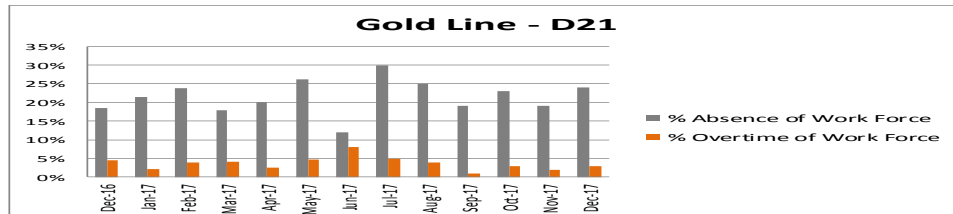
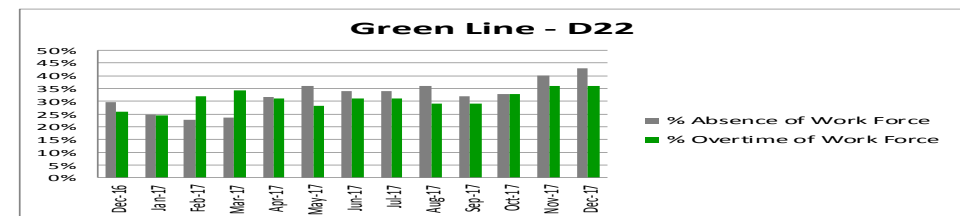
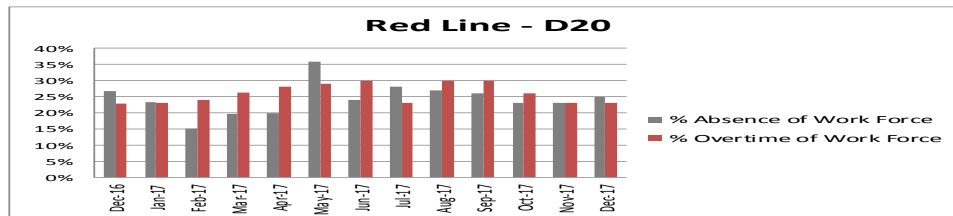
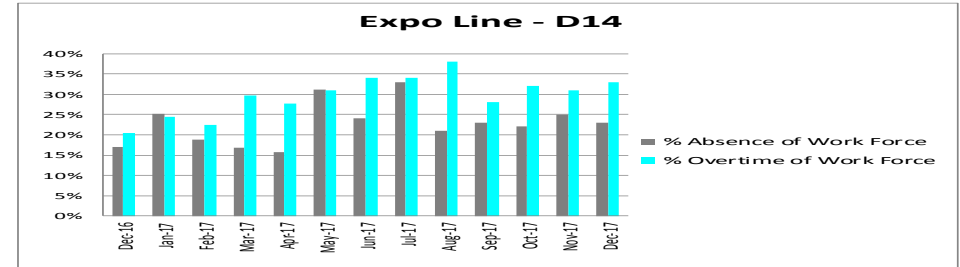
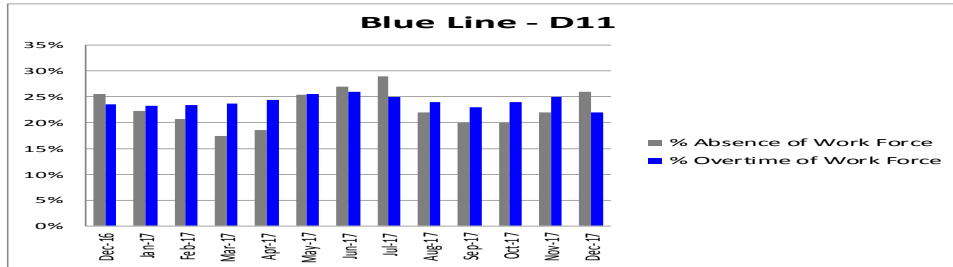


Metro

Note: Overtime also covers other required activities, including Training, Component Overhaul, and Special Events.

ATU - %Absence & %Overtime of Work Force

December 2016 - 2017



% Absence of Work Force	Dec-16	Jan-17	Feb-17	Mar-17	Apr-17	May-17	Jun-17	Jul-17	Aug-17	Sep-17	Oct-17	Nov-17	Dec-17	13-Month Average
Blue Line D11	26%	22%	21%	17%	19%	25%	27%	29%	22%	20%	20%	22%	26%	23%
Expo Line D14	17%	25%	19%	17%	16%	31%	24%	33%	21%	23%	22%	25%	23%	23%
Red Line D20	27%	23%	15%	20%	20%	36%	24%	28%	27%	26%	23%	23%	25%	24%
Green Line D22	30%	25%	23%	24%	32%	36%	34%	34%	36%	32%	33%	40%	43%	32%
Gold Line D21	18%	21%	24%	18%	20%	26%	12%	30%	25%	19%	23%	19%	24%	22%
Gold Line D24	21%	16%	11%	17%	21%	29%	26%	24%	19%	20%	22%	24%	27%	21%

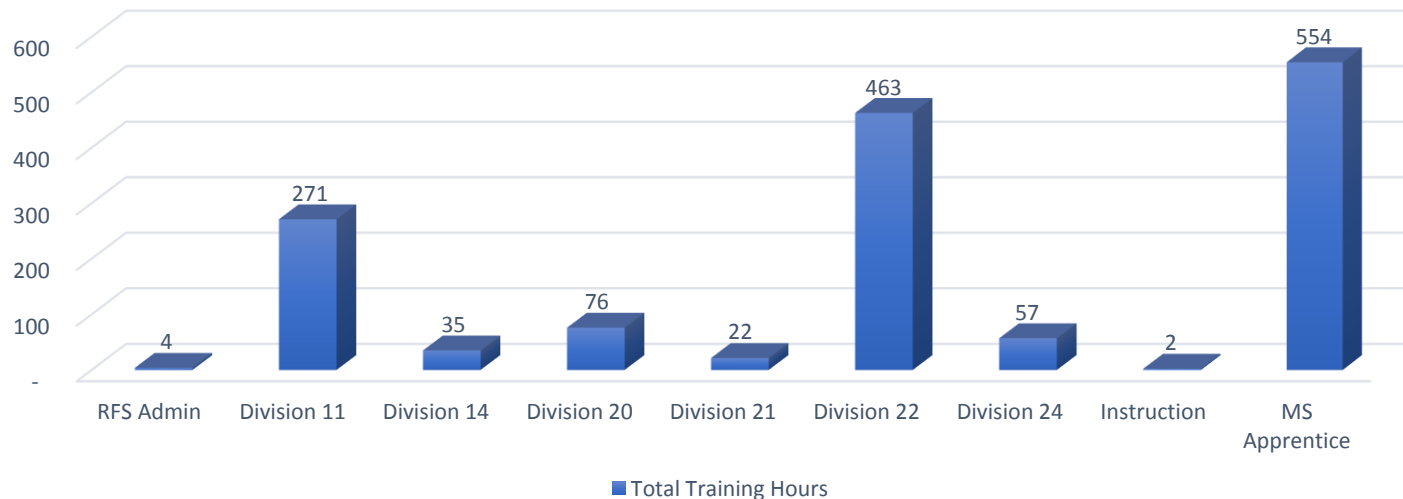
% Overtime of Work Force	Dec-16	Jan-17	Feb-17	Mar-17	Apr-17	May-17	Jun-17	Jul-17	Aug-17	Sep-17	Oct-17	Nov-17	Dec-17	13-Month Average
Blue Line D11	24%	23%	23%	24%	24%	26%	26%	25%	24%	23%	24%	25%	22%	24%
Expo Line D14	20%	24%	22%	30%	28%	31%	34%	34%	38%	28%	32%	31%	33%	30%
Red Line D20	23%	23%	24%	26%	28%	29%	30%	23%	30%	30%	26%	23%	23%	26%
Green Line D22	26%	25%	32%	34%	31%	28%	31%	31%	29%	29%	33%	36%	36%	31%
Gold Line D21	5%	2%	4%	4%	2%	5%	2%	5%	4%	1%	3%	2%	3%	3%
Gold Line D24	12%	11%	10%	14%	11%	13%	13%	15%	13%	14%	15%	12%	14%	13%

Training - RFS Instruction Department

December 2017

RFS Training Hours

Team	No. Employees	Vehicle Training	RFS Other	Metro Provided	Total Training Hours
RFS Admin	3	-	-	4	4
Division 11	88	160	33	78	271
Division 14	25	-	-	35	35
Division 20	88	-	-	76	76
Division 21	17	-	1.5	20	22
Division 22	34	360	3	100	463
Division 24	42	-	1.5	56	57
Instruction	2	-	-	2	2
MS Apprentice	11	240	282	32	554
Grand Total	310	760	321	402	1483



Description

Vehicle Training = Training related to Fleet Maintenance

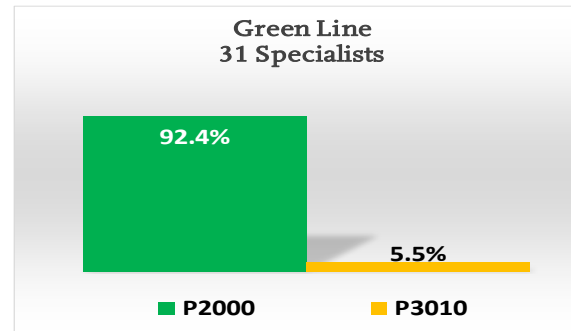
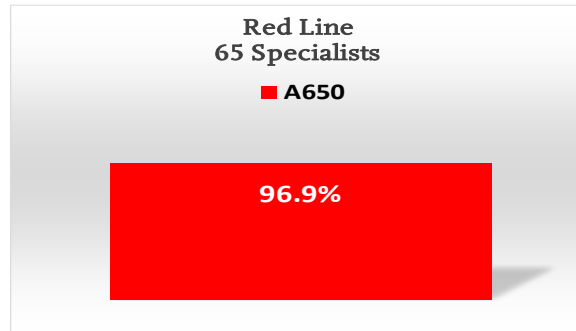
RFS Other = Training Created by RFS Instruction but not related to Vehicle Training

Metro Provided = Training provided outside RFS Training (OD&T, Transportation)

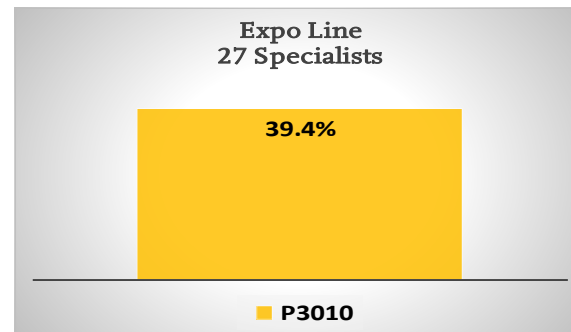
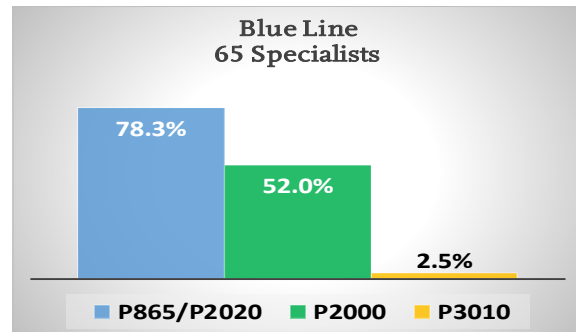
Total Training Hours = Total amount of man-hours spent by RFS in any kind of training

Maintenance Specialists Vehicle Training Levels

December 2017



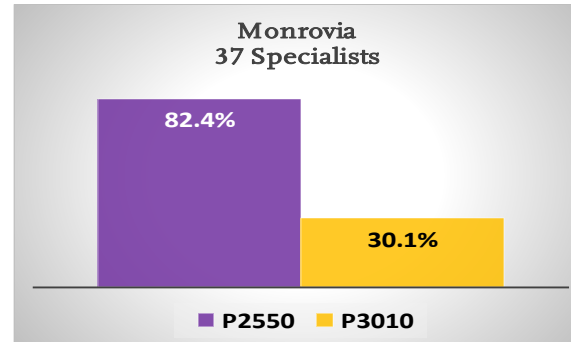
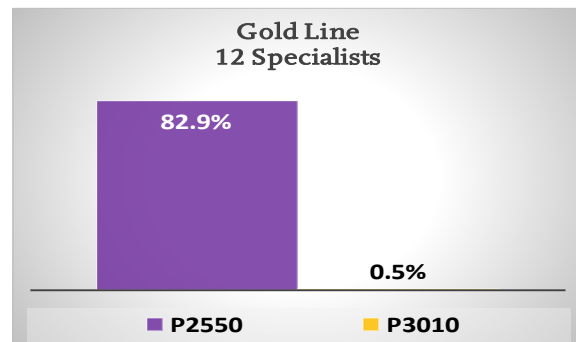
Red Line	65	Specialists
Average Experience	12.9	Years
A650	96.9%	Training Complete



Green Line	31	Specialists
Average Experience	9.2	Years
P2000	92.4%	Training Complete
P3010	5.5%	Training Complete

Blue Line	65	Specialists
Average Experience	13.2	Years
P865/P2020	78.3%	Training Complete
P2000	52.0%	Training Complete
P3010	2.5%	Training Complete

Expo Line	27	Specialists
Average Experience	5.4	Years
P3010	39.4%	* Becoming single fleet



Gold Line	12	Specialists
Average Experience	5.8	Years
P2550	82.9%	Training Complete
P3010	0.5%	Training Complete

Gold Line Monrovia	37	Specialists
Average Experience	7.2	Years
P2550	82.4%	Training Complete
P3010	30.1%	Training Complete

* SHIFT IN NUMBERS REPRESENT THE MOVEMENT OF EMPLOYEES WITH LESS EXPERIENCE AND TRAINING, SUCH AS APPRENTICES MOVING TO THE MAINTENANCE SPECIALIST LEVEL