



# Rail Fleet Services Monthly Report February 2017

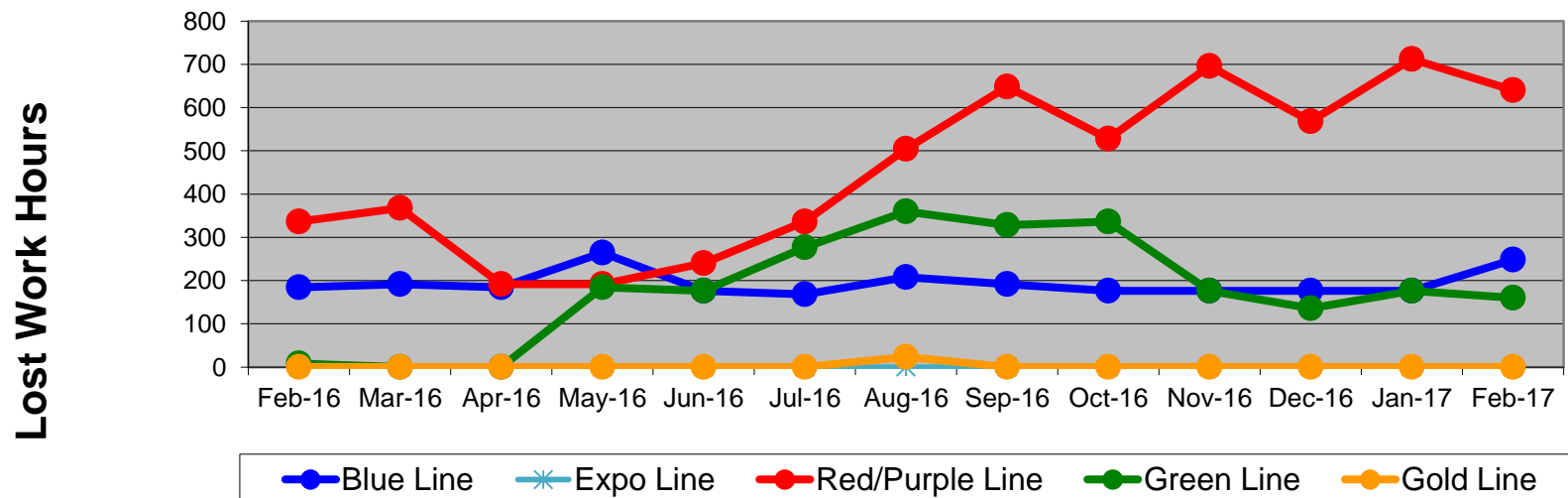
# Table of Contents

•	Safety & Cleanliness		
	- Industrial Injuries	Page	3
	- Rail Vehicle Accidents & Major Incidents	Page	4
	- Car Cleanliness	Page	5
•	Customer Service		
	- Service Delivery – AM/PM Pull-Outs	Page	6
	- Vehicle Utilization – Red Line	Page	7
	- Vehicle Utilization – Blue Line & Expo Line	Page	8
	- Vehicle Utilization – Green Line & Gold Line	Page	9
	- All Train Delay Incidents	Page	10
	- Mean Miles Between Failures (Major) & MMBF by Division	Page	11-12
	- Mileage Between Data Range (by month)	Page	13
•	Business Processes		
	- Top Incident Categories	Page	14
	- Major Incidents	Page	15
	- Preventive Maintenance Compliance	Page	16
	- RFS Leader Wrench Turning	Page	17
•	Finance		
	- Vandalism & Graffiti Costs	Page	18
	- Vandalism & Graffiti Pictures	Page	19
	- Labor & Material Costs	Page	20
	- Cost per mile	Page	21
	- Absence vs. Overtime	Page	22
•	Growth		
	- RFS Instruction Department Activities	Page	23-24

# Industrial Injuries – Lost Work Hours February 2016-2017

	Feb-16	Mar-16	Apr-16	May-16	Jun-16	Jul-16	Aug-16	Sep-16	Oct-16	Nov-16	Dec-16	Jan-17	Feb-17	13-Month Period
Blue Line	184	192	184	264	176	168	208	192	176	176	176	176	248	2,520
Expo Line	0	0	0	0	0	0	0	0	0	0	0	0	0	0
Red/Purple Line	336	368	192	192	240	336	504	648	528	696	568	712	640	5,960
Green Line	8	0	0	184	176	277	360	328	336	176	136	176	160	2,317
Gold Line	0	0	0	0	0	0	24	0	0	0	0	0	0	24
Totals	528	560	376	640	592	781	1,096	1,168	1,040	1,048	880	1,064	1,048	10,821

## Industrial Injuries (lost work hours)



# Rail Vehicle Accidents & Major Incidents

## February 2016-2017

Repair Costs	Feb-16	Mar-16	Apr-16	May-16	Jun-16	Jul-16	Aug-16	Sep-16	Oct-16	Nov-16	Dec-16	Jan-17	Feb-17	13-Month Period
Blue Line	\$7,379	\$2,037	\$1,232	\$513	\$0	\$0	\$3,211	\$665	\$28,089	\$0	\$2,352	\$170,311	\$0	\$215,789
Expo Line	\$0	\$0	\$0	\$0	\$0	\$576	\$0	\$12,921	\$9,468	\$0	\$381	\$763	\$1,930	\$26,039
Red/Purple Line	\$0	\$0	\$1,284	\$0	\$1,932	\$840	\$552	\$0	\$0	\$0	\$0	\$0	\$1,032	\$5,640
Green Line	\$0	\$0	\$0	\$0	\$0	\$0	\$51,535	\$0	\$0	\$0	\$0	\$0	\$0	\$51,535
Gold Line	\$53	\$1,487	\$4,646	\$0	\$19,451	\$564	\$0	\$0	\$5,694	\$0	\$0	\$3,789	\$15,829	\$51,513
Totals	\$7,432	\$3,524	\$7,162	\$513	\$21,383	\$1,980	\$55,298	\$13,586	\$43,251	\$0	\$2,733	\$174,863	\$18,791	\$350,516

Rail Vehicle Accident Costs - February 2017				
Date	Incident #	Problem Code	Incident Description	Repair Cost
<b>Metro Blue Line</b>				
2/8/17	2832413	Train vs. Other	Intoxicated passenger hit windshield of train as it was approaching Florence Station.	\$ -
<b>Metro Blue Line Total</b>				<b>\$ -</b>
<b>Metro Expo Line</b>				
2/15/17	2834989	Train vs. Vehicle	A 10-73 was reported (hit & run) at 12th St. & Flower, Track 2, SB.	\$ 1,160
2/16/17	2835386	Train vs. Vehicle	A 10-73 was reported (hit & run) at 6th St. & Colorado, Track 3.	\$ 770
<b>Metro Expo Line Total</b>				<b>\$ 1,930</b>
<b>Metro Gold Line</b>				
2/11/17	2833491	Train vs. Vehicle	A 10-73 was reported at Buena Vista Crossing, Track 1, NB.	\$ 961
2/15/17	2834875	Train vs. Vehicle	A 10-73 was reported at Ave 52 Grade Crossing, Track 2.	\$ -
2/15/17	2834941	Train vs. Vehicle	A 10-73 was reported at Ave 54.	\$ 14,868
<b>Metro Gold Line Total</b>				<b>\$ 15,829</b>
<b>Metro Red Line</b>				
2/21/17	2836833	Train vs. Other	Westbound train 210 picked up debris and was arcing on approach to North Hollywood AR. False Occupancy at North Hollywood Interlocking AR Track.	\$ 1,032
<b>Metro Red Line Total</b>				<b>\$ 1,032</b>
<b>Grand Total</b>				<b>\$ 18,791</b>

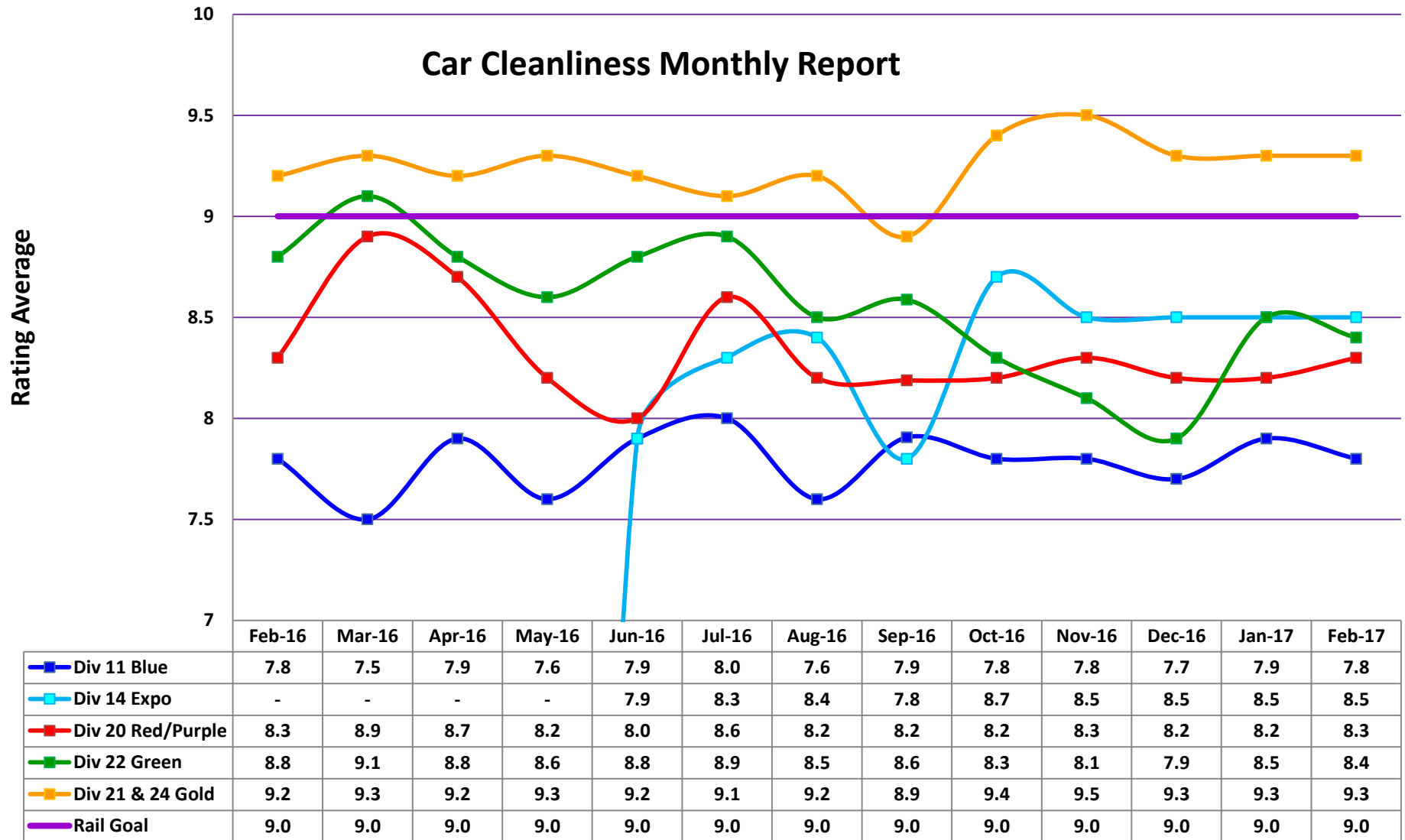


**Metro**

**Note:** Repair costs are only the expenses captured during the time period of the report. Actual costs may be significantly higher, if repairs are spread out over several months.

# Rail Vehicle – Car Cleanliness

## February 2016-2017



# Service Delivery February 2017

## Blue Line Fleet Size: 71

<u>Pull Out</u>	<u>Vehicles Required</u>	<u>Average Available</u>	<u>% Up (Down)</u>
Weekday:	57	55	96%
Weekend:	26	43	165%

**Monthly Mileage: 376,674**

## Expo Line Fleet Size: 60

<u>Pull Out</u>	<u>Vehicles Required</u>	<u>Average Available</u>	<u>% Up (Down)</u>
Weekday:	47	44	94%
Weekend:	30	43	143%

**Monthly Mileage: 266,876**

## Red/Purple Line Fleet Size: 104

<u>Pull Out</u>	<u>Vehicles Required</u>	<u>Average Available</u>	<u>% Up (Down)</u>
Weekday:	64	78	122%
Weekend:	40	66	165%

**Monthly Mileage: 566,328**

## Green Line Fleet Size: 29

<u>Pull Out</u>	<u>Vehicles Required</u>	<u>Average Available</u>	<u>% Up (Down)</u>
Weekday:	22	22	100%
Weekend:	14	16	114%

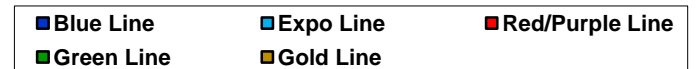
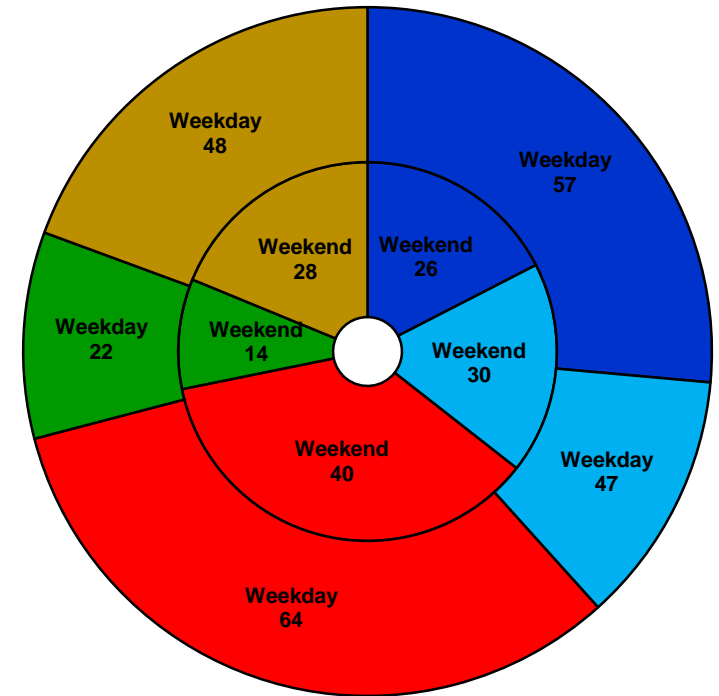
**Monthly Mileage: 218,332**

## Gold Line Fleet Size: 65

<u>Pull Out</u>	<u>Vehicles Required</u>	<u>Average Available</u>	<u>% Up (Down)</u>
Weekday (Div 21):	10	10	100%
Weekday (Div 24):	38	41	108%
Weekend (Div 24):	28	42	150%

**\*Monthly Mileage: 493,765**

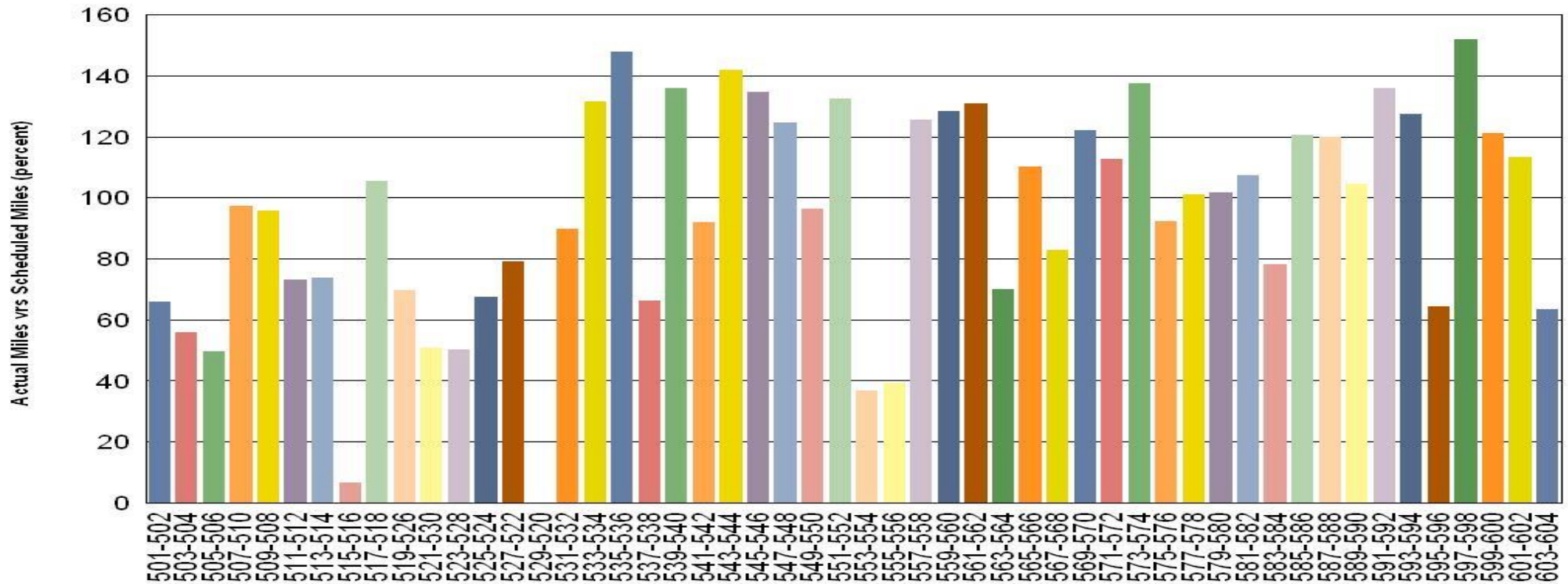
\* Gold Line monthly mileage includes Division 21 and 24.



**Metro**

# Vehicle Utilization February 2017

## Metro Red/Purple Line (104 Cars)



### Red/Purple Line:

The following cars were out of service due to:

**Car # 515-516** – ATP Fault, Flashing Cab Signal

**Car # 529-520** – Pending on Various Parts such as; Gearboxes, Blower Motors

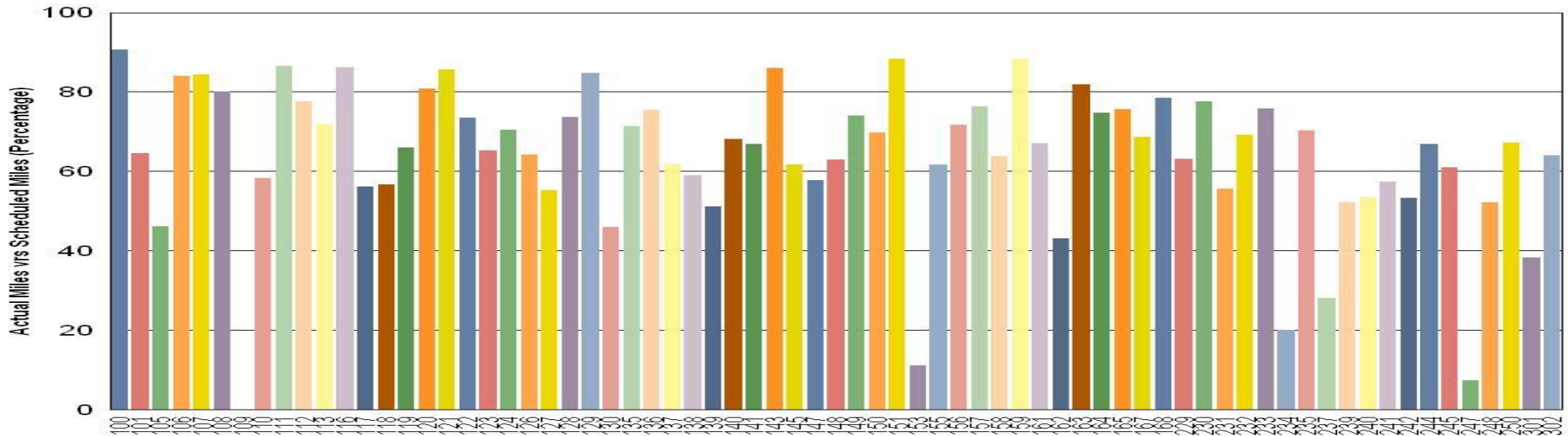
**Car # 553-554** – Propulsion shoot through of GTO

**Car # 555-556** – Propulsion shoot through of GTO



# Vehicle Utilization February 2017

## Metro Blue Line (71 Cars)



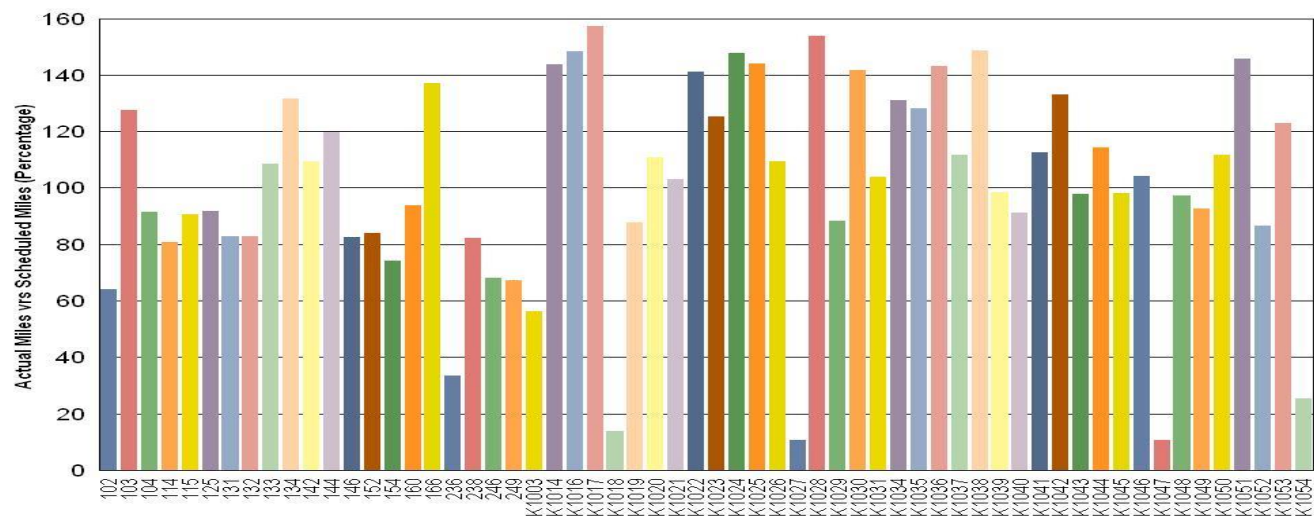
**Blue Line:** The following cars were out of service due to:

- Car # 109 – Derailment Repair
- Car # 153 – High Voltage Wiring Repair/Replacement
- Car # 234 – Training Car/Air Hose Campaign
- Car # 247 – Paint Car/90K Inspection
- Car # 301 – Propulsion Fault Repair

**Expo Line:** The following cars were out of service due to:

- Car # 236 – HVAC, Doors, and Brake Overhaul
- Car # K1018 – MBL Operator Training
- Car # K1027 – PA fails/Air Comp not Building up
- Car # K1047 – MBL Operator Training
- Car # K1054 – Newly Accepted, being Prepped for Service

## Metro Expo Line (60 Cars)





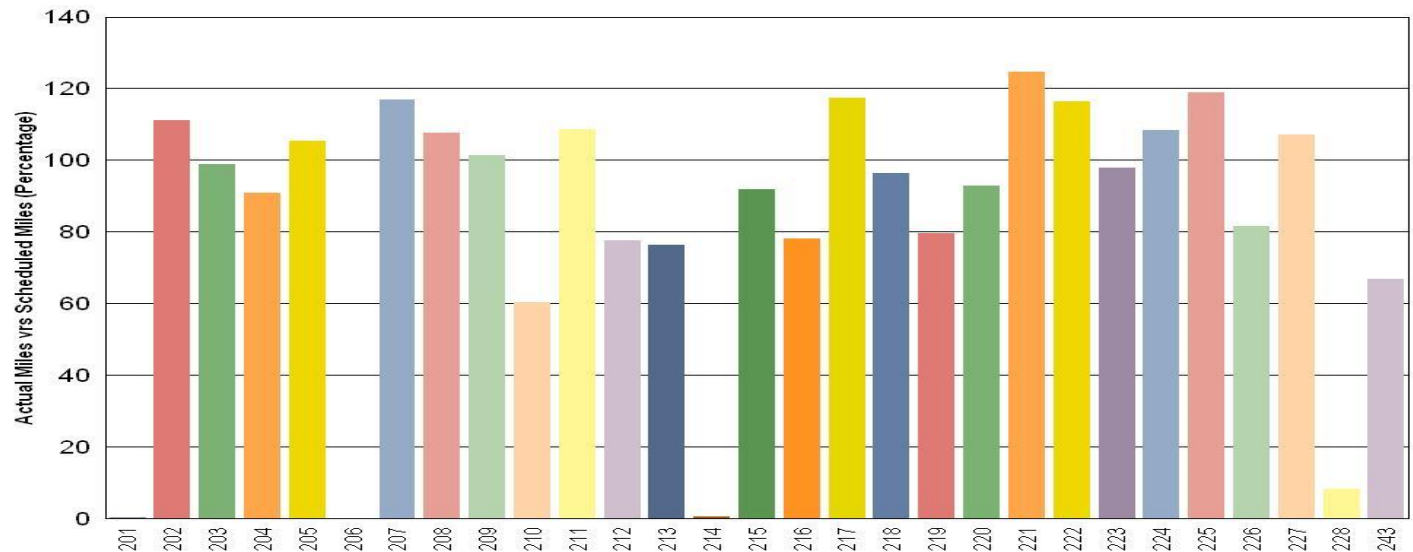
# Vehicle Utilization February 2017

## Green Line:

The following cars were out of service due to:

- Car # 201** – EMI/Engineering Hold
- Car # 206** – EMI/Engineering Hold
- Car # 214** – EMI/Engineering Hold
- Car # 228** – EMI/Engineering Hold

## Metro Green Line (29 Cars)

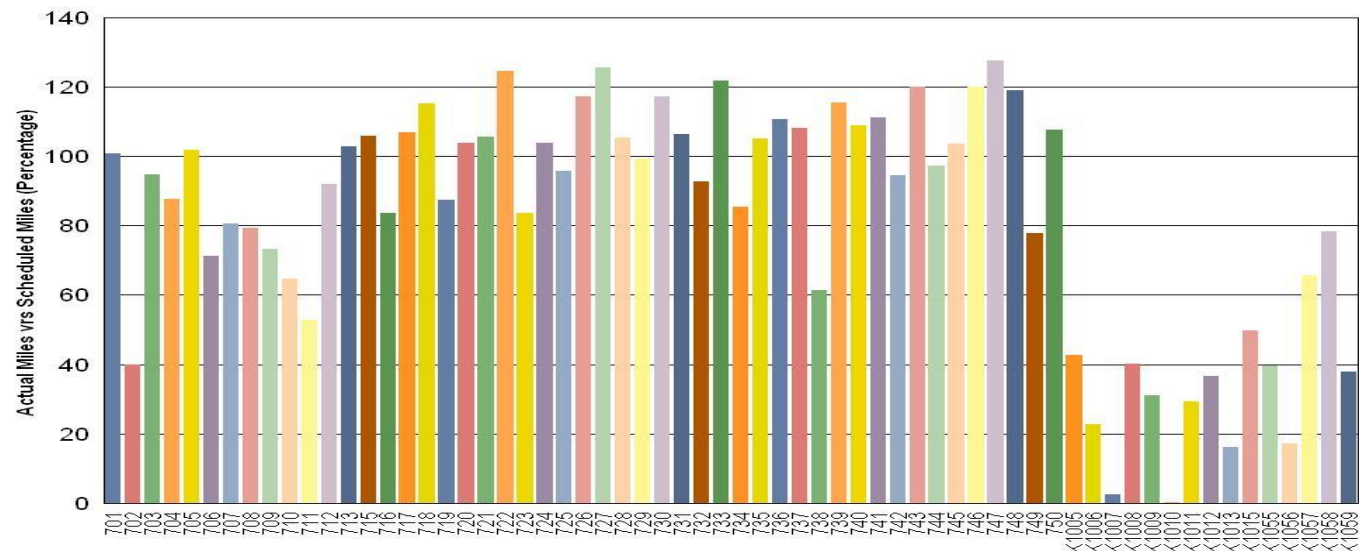


## Gold Line:

The following cars were out of service due to:

- Car # K1006** – Warranty Repairs
- Car # K1007** – Warranty Repairs
- Car # K1009** – Warranty Repairs
- Car # K1010** – Warranty Repairs
- Car # K1011** – Warranty Repairs
- Car # K1012** – Warranty Repairs
- Car # K1013** – Warranty Repairs
- Car # K1056** – Newly Accepted, being Prepped for Service
- Car # K1059** – Newly Accepted, being Prepped for Service

## Metro Gold Line (65 Cars)

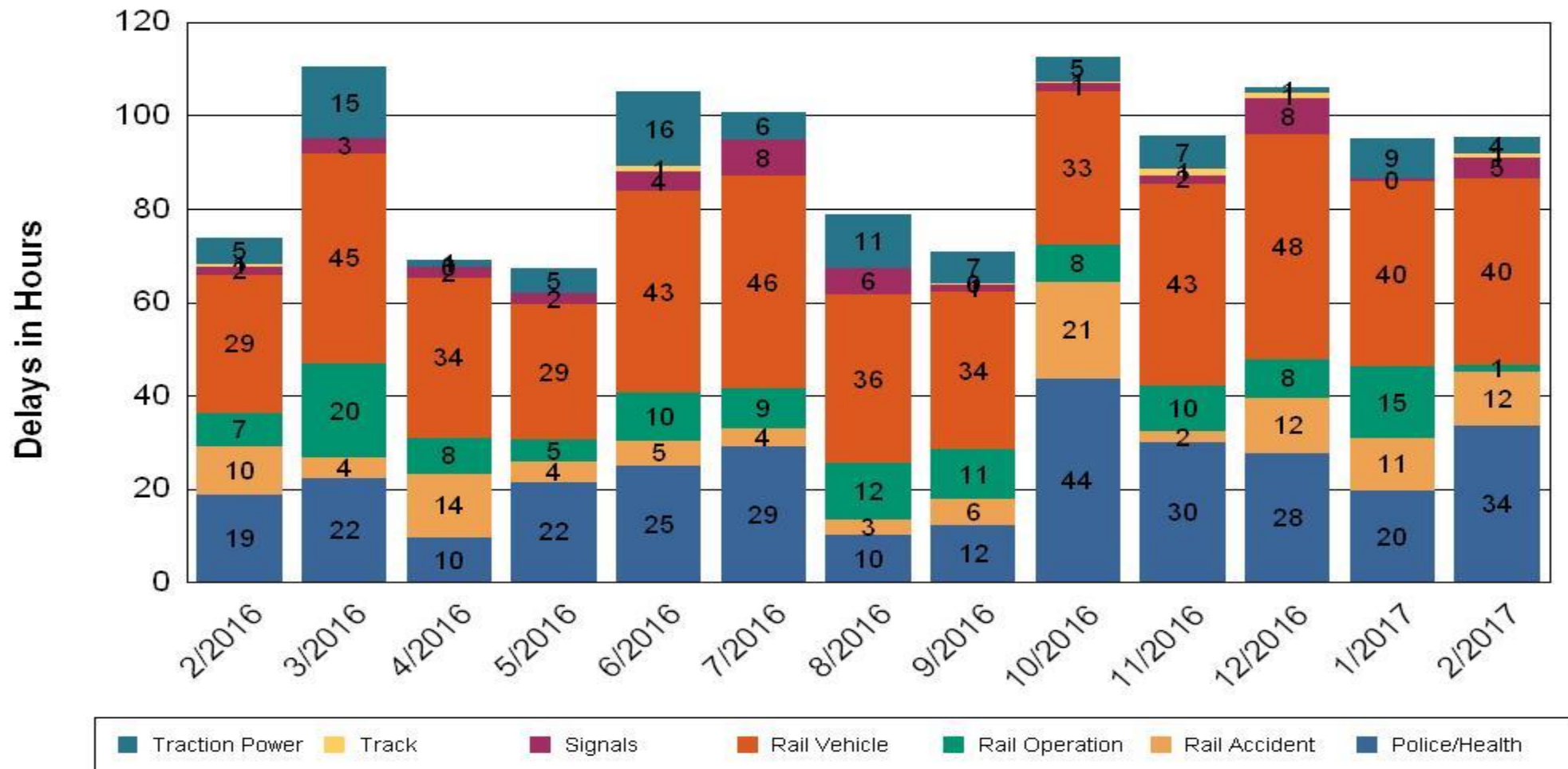


•Percentage includes an average 4% mileage deduction for yard mileage and vehicle testing.

# All Train Delays (Hours) February 2016-2017

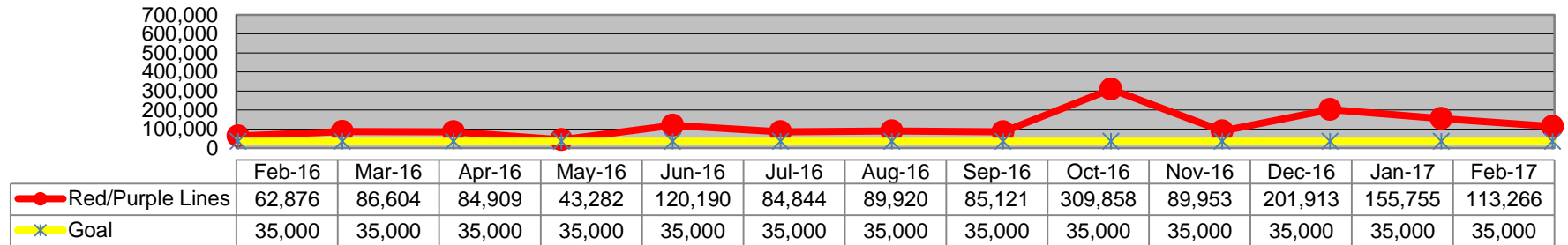
## All Train Delays

Totals Include the delay to all trains involved (not just the primary incident)

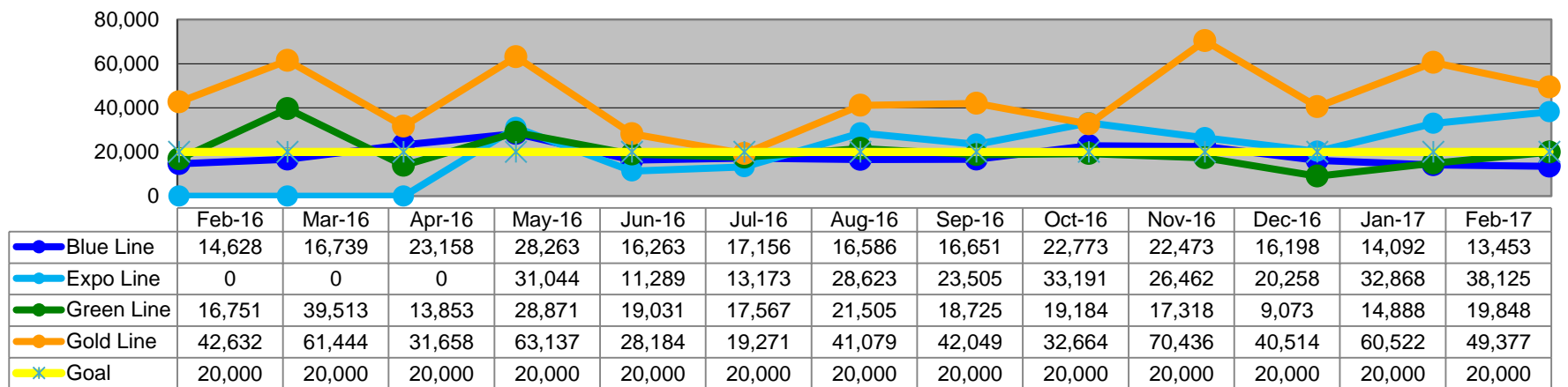


# Mean Miles Between Major Failures (MMBF) February 2016-2017

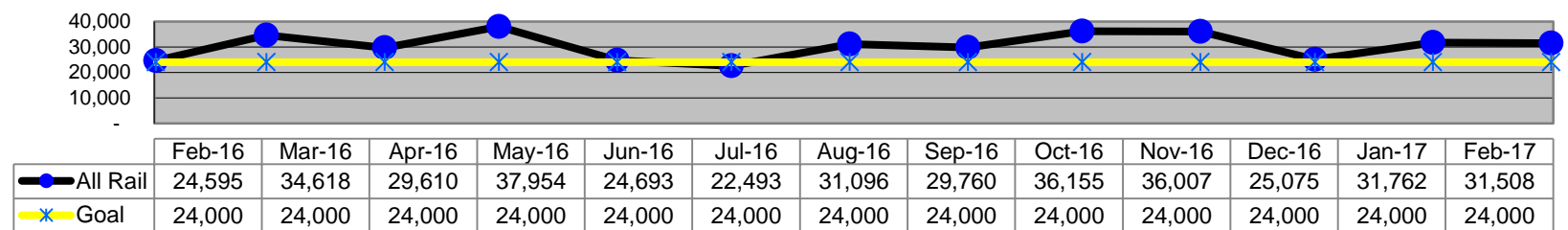
## Mean Miles Between Major Failures - Heavy Rail



## Mean Miles Between Major Failures - Light Rail

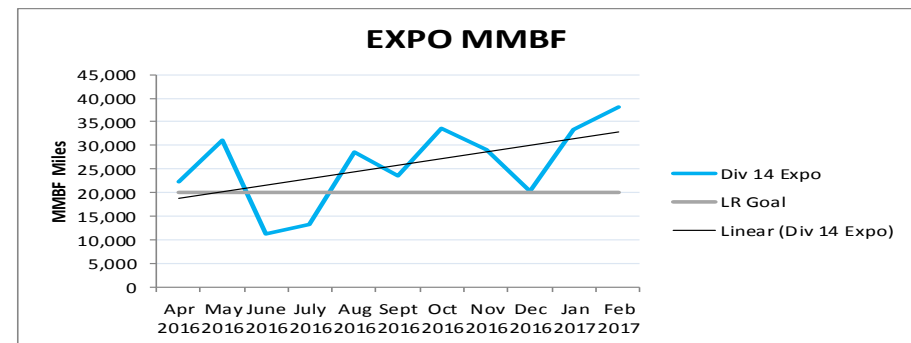
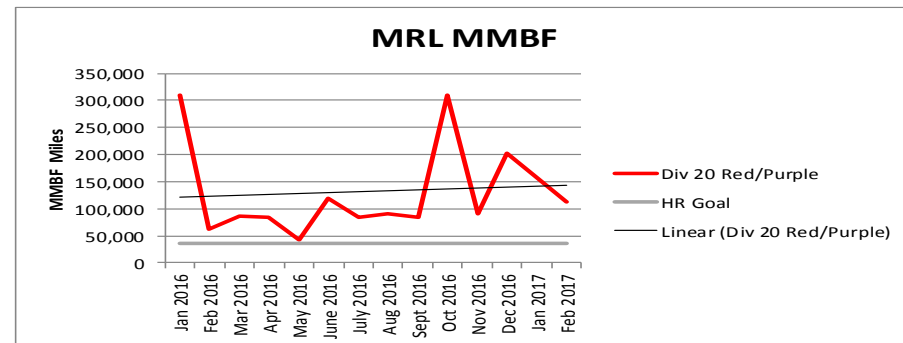
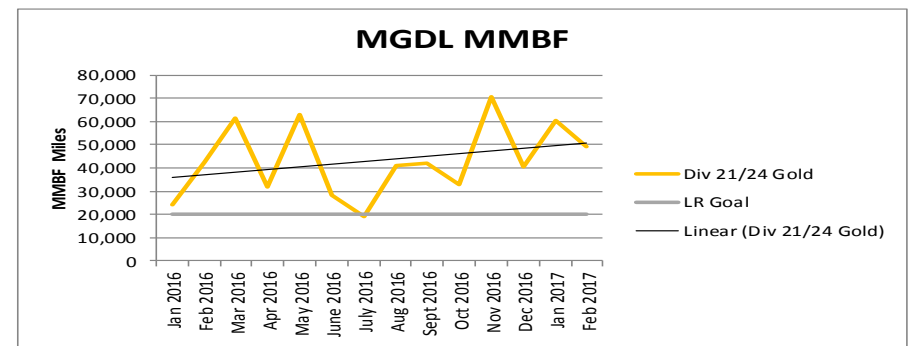
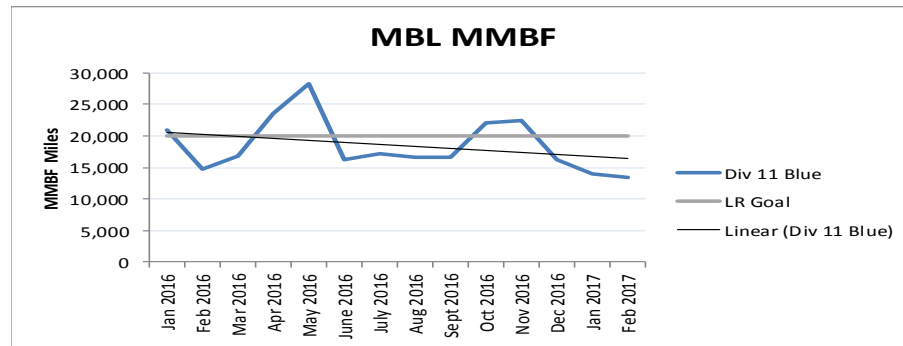
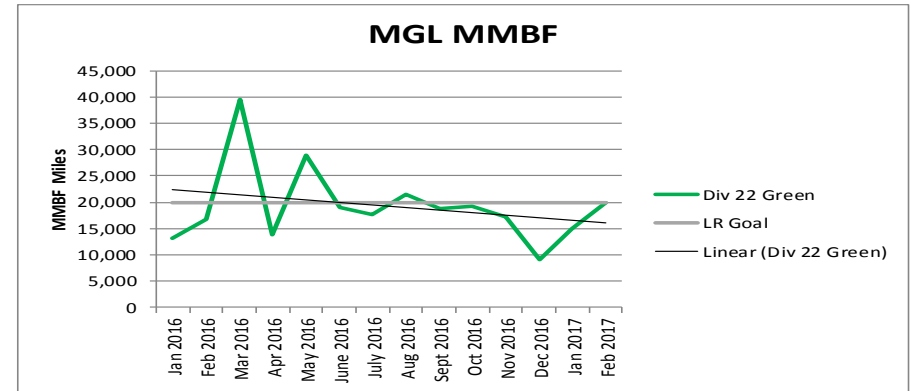


## Mean Miles Between Major Failures (all)



# MMBF by Division February 2016-2017

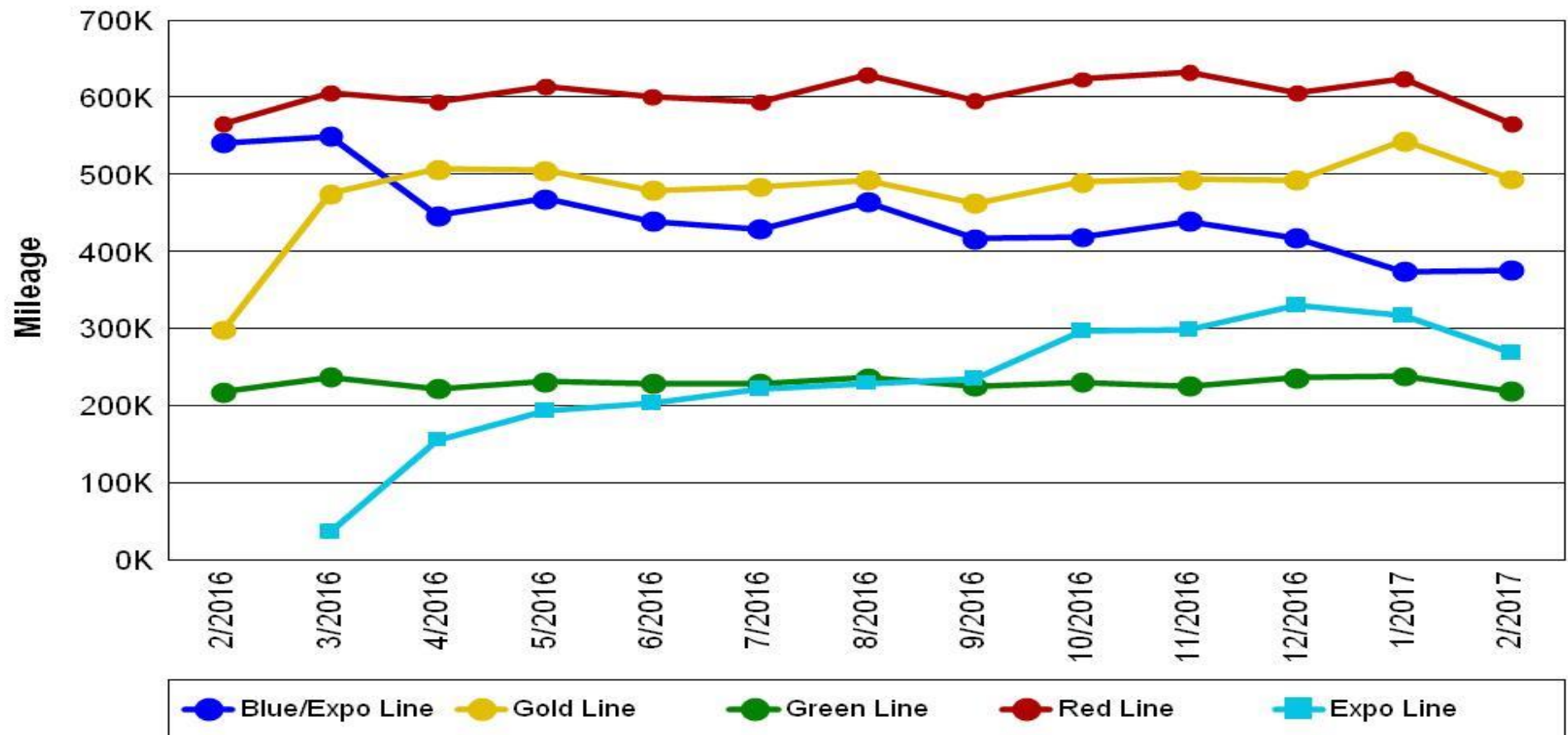
Month	Div 11 Blue	Div 20 Red/Purple	Div 22 Green	Div 21/24 Gold	Div 14 Expo	LR Goal	HR Goal
Jan 2016	20,976	310,794	13,075	24,371	-	20,000	35,000
Feb 2016	14,628	62,876	16,751	42,632	-	20,000	35,000
Mar 2016	16,739	86,604	39,513	61,444	-	20,000	35,000
Apr 2016	23,513	84,909	13,853	31,658	22,195	20,000	35,000
May 2016	28,263	43,282	28,871	63,137	31,044	20,000	35,000
June 2016	16,263	120,190	19,031	28,184	11,289	20,000	35,000
July 2016	17,156	84,844	17,567	19,271	13,173	20,000	35,000
Aug 2016	16,586	89,920	21,505	41,079	28,623	20,000	35,000
Sept 2016	16,651	85,121	18,725	42,049	23,505	20,000	35,000
Oct 2016	22,027	309,858	19,184	32,664	33,606	20,000	35,000
Nov 2016	22,473	89,953	17,318	70,436	29,108	20,000	35,000
Dec 2016	16,198	201,913	9,073	40,514	20,258	20,000	35,000
Jan 2017	13,950	155,755	14,888	60,522	33,309	20,000	35,000
Feb 2017	13,453	113,266	19,848	49,377	38,125	20,000	35,000



# Mileage Between Data Range (by month)

## February 2016-2017

### Rail Division Monthly Mileage



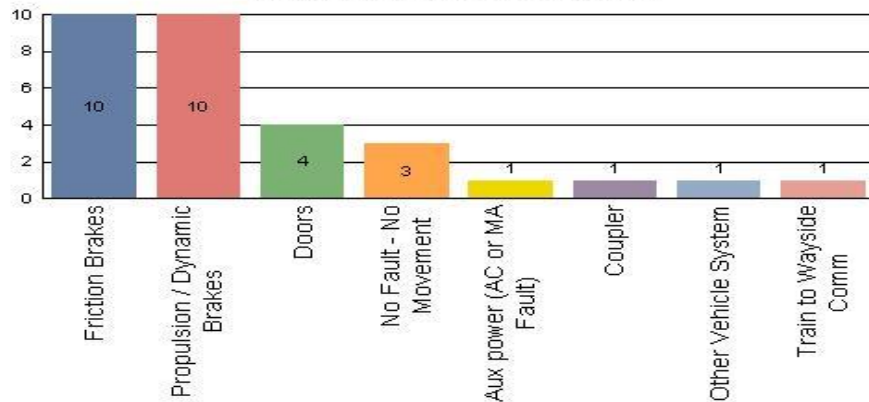
#### Notes:

- ♦ Gold Line increase in mileage is due to the open of the Foothill extension, which includes stations further apart and faster average running speeds.
- ♦ With the opening of Division 14 in Santa Monica, the Expo Line mileage is now being reported separately from the Blue Line.

# Top Incident Categories February 2017

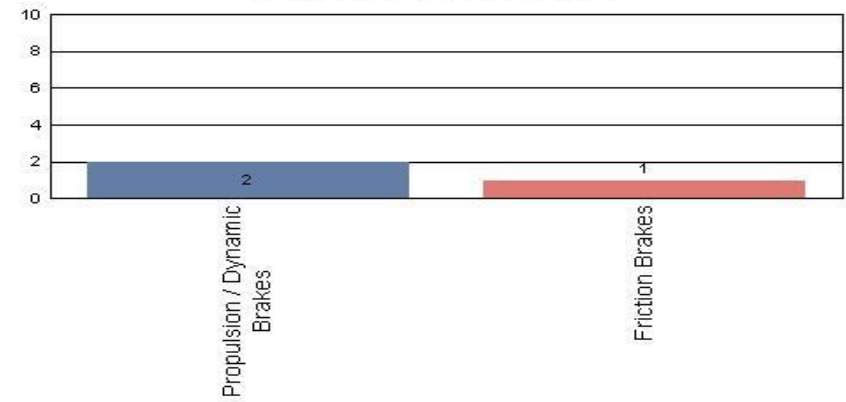
## Metro Blue Line (Div 11)

**Top Incident Categories**



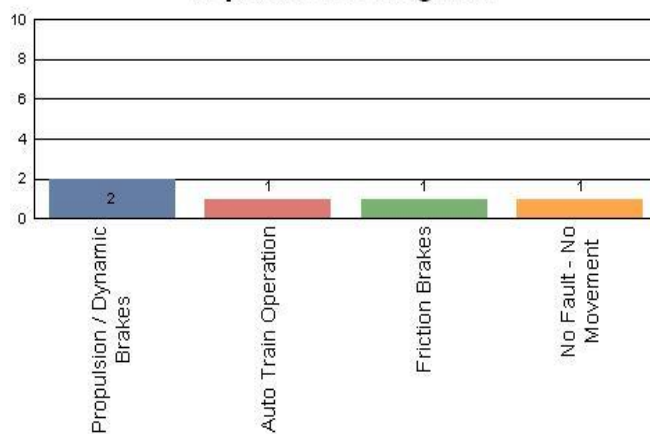
## Metro Expo Line (Div 14)

**Top Incident Categories**



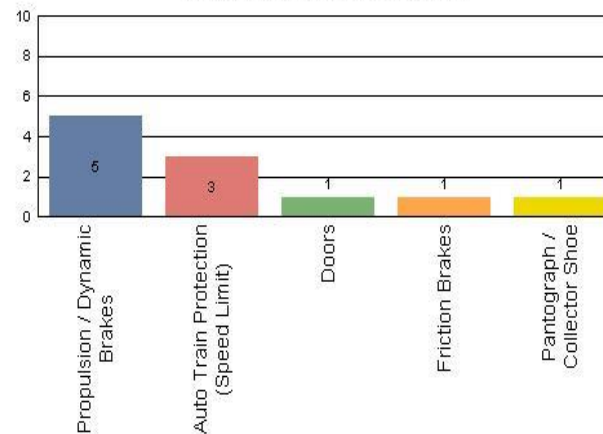
## Metro Red/Purple Line (Div 20)

**Top Incident Categories**



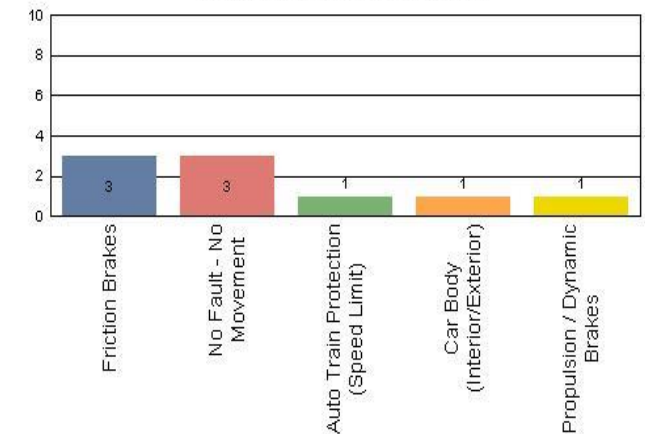
## Metro Green Line (Div 22)

**Top Incident Categories**



## Metro Gold Line (Div 21 & Div 24)

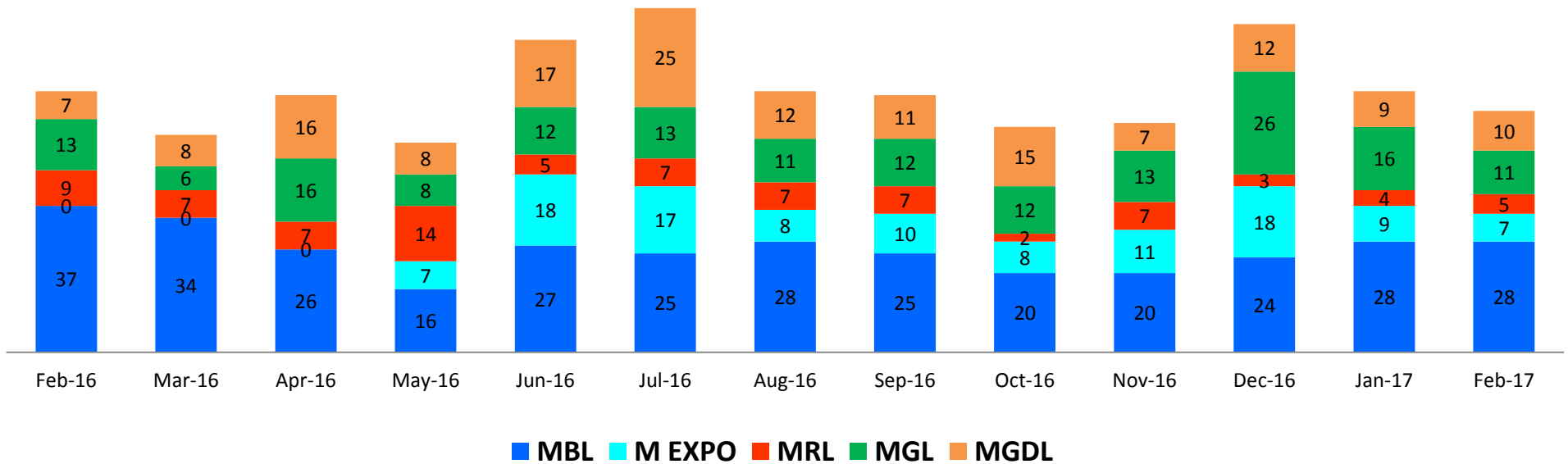
**Top Incident Categories**



# Major Incidents

## February 2016-2017

### Numbers of Major System Failures (by Line)



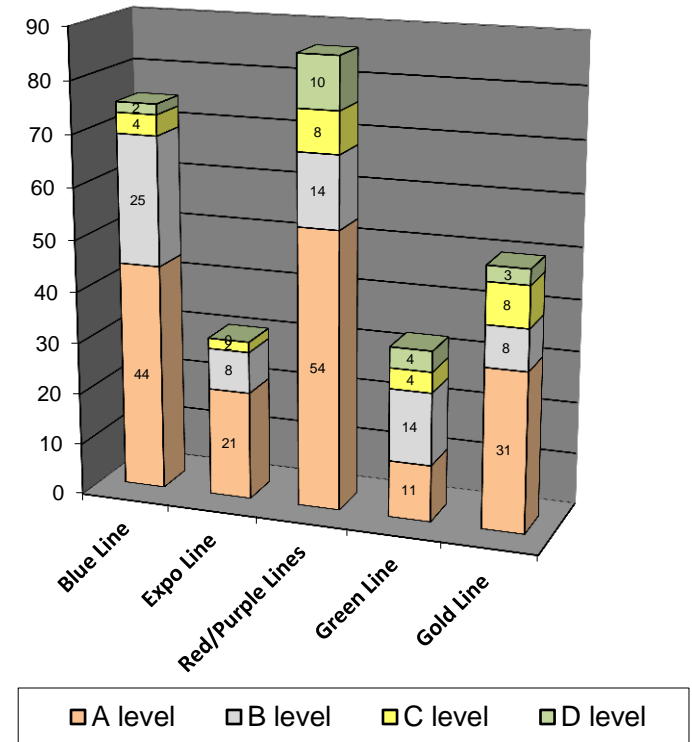


# Preventive Maintenance Compliance February 2016-2017

PM Compliance	Feb-16	Mar-16	Apr-16	May-16	Jun-16	Jul-16	Aug-16	Sep-16	Oct-16	Nov-16	Dec-16	Jan-17	Feb-17
Blue Line	100%	100%	100%	100%	100%	100%	100%	100%	100%	100%	100%	100%	100%
Expo Line	0%	0%	0%	100%	100%	100%	100%	100%	100%	100%	100%	100%	100%
Red/Purple Lines	100%	100%	100%	100%	100%	100%	100%	100%	100%	100%	100%	100%	100%
Green Line	100%	100%	100%	93%	100%	100%	100%	97%	100%	100%	100%	100%	100%
Gold Line	100%	100%	100%	100%	100%	100%	100%	100%	100%	100%	100%	100%	100%

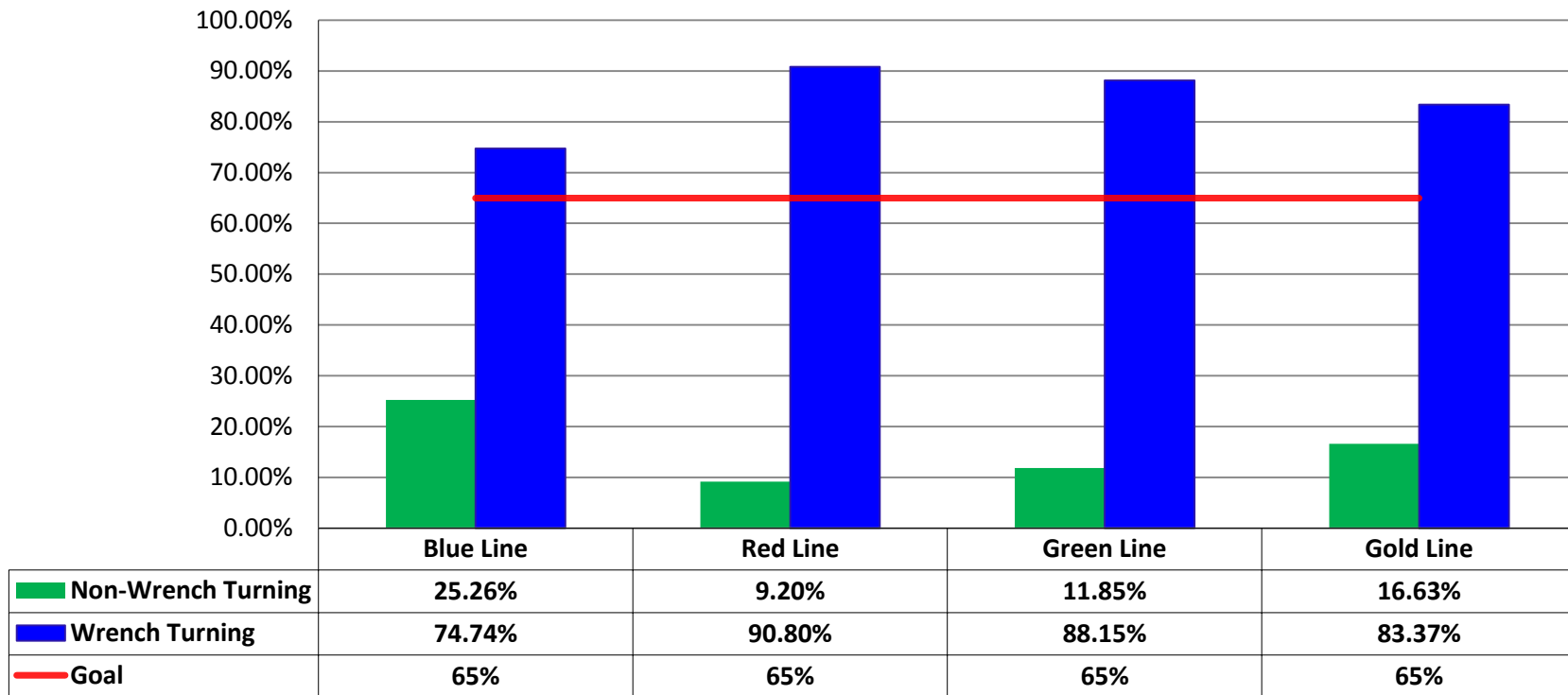
Number of Preventive Maintenance Inspections - February 2017					
Line	A level	B level	C level	D level	Totals
Blue Line	44	25	4	2	75
Expo Line	21	8	2	0	31
Red/Purple Lines	54	14	8	10	86
Green Line	11	14	4	4	33
Gold Line	31	8	8	3	50
<b>Totals:</b>	<b>161</b>	<b>69</b>	<b>26</b>	<b>19</b>	<b>275</b>

Explanation of PM Inspection levels		Miles			
Line	Type	A level	B level	C level	D level
Blue/Expo Lines	P865/P2020	5,000	15,000	30,000	60,000
Blue/Expo Lines	P2000	7,500	22,500	45,000	90,000
Red/Purple Lines	A650	7,500	22,500	45,000	90,000
Green Line	P2000	7,500	22,500	45,000	90,000
Gold Line	P2550	10,000	30,000	60,000	120,000
Gold/Expo Lines	P3010	10,000	30,000	60,000	120,000



# RFS Leader Wrench Turning February 2017

## RFS - Leader Wrench Turning February 2017

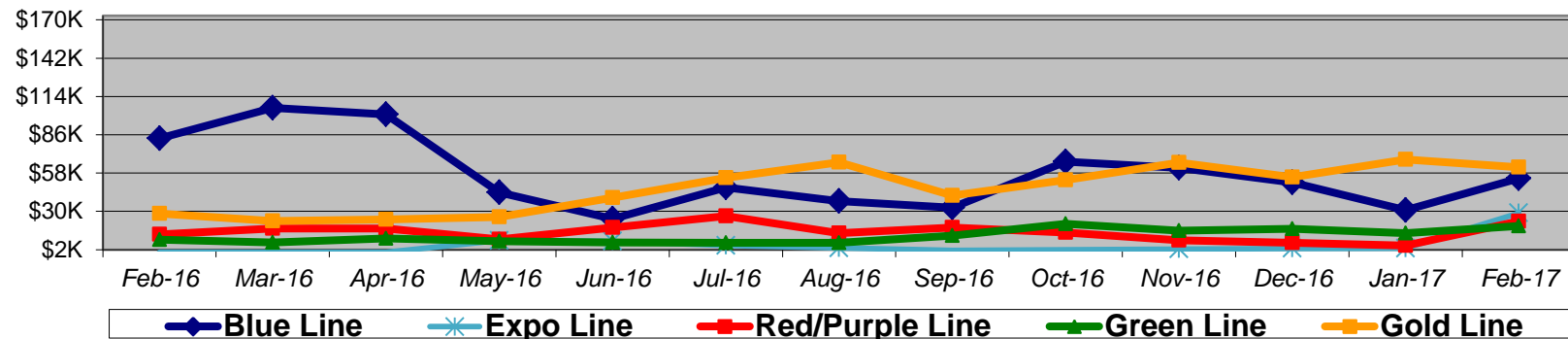


**Notes:** Labor hours contributed by Maint Specialist Leader, Rail Body/Paint Repair Leader, and Maint Specialist Temporary Leader

# Vandalism & Graffiti Report

## February 2016-2017

Graffiti Costs														
	Feb-16	Mar-16	Apr-16	May-16	Jun-16	Jul-16	Aug-16	Sep-16	Oct-16	Nov-16	Dec-16	Jan-17	Feb-17	13-Month Period
Blue Line	\$83K	\$106K	\$101K	\$44K	\$24K	\$48K	\$38K	\$33K	\$66K	\$62K	\$51K	\$31K	\$54K	\$740K
Expo Line	\$K	\$K	\$K	\$9K	\$8K	\$5K	\$3K	\$2K	\$2K	\$2K	\$3K	\$3K	\$29K	\$66K
Red/Purple Line	\$13K	\$17K	\$17K	\$9K	\$18K	\$27K	\$14K	\$18K	\$14K	\$9K	\$7K	\$5K	\$23K	\$192K
Green Line	\$9K	\$7K	\$10K	\$8K	\$7K	\$7K	\$7K	\$12K	\$21K	\$16K	\$17K	\$14K	\$19K	\$156K
Gold Line	\$28K	\$23K	\$24K	\$26K	\$40K	\$54K	\$66K	\$42K	\$53K	\$66K	\$55K	\$68K	\$62K	\$607K
Totals:	\$134K	\$153K	\$153K	\$96K	\$98K	\$141K	\$128K	\$106K	\$157K	\$154K	\$133K	\$121K	\$187K	\$1,761K

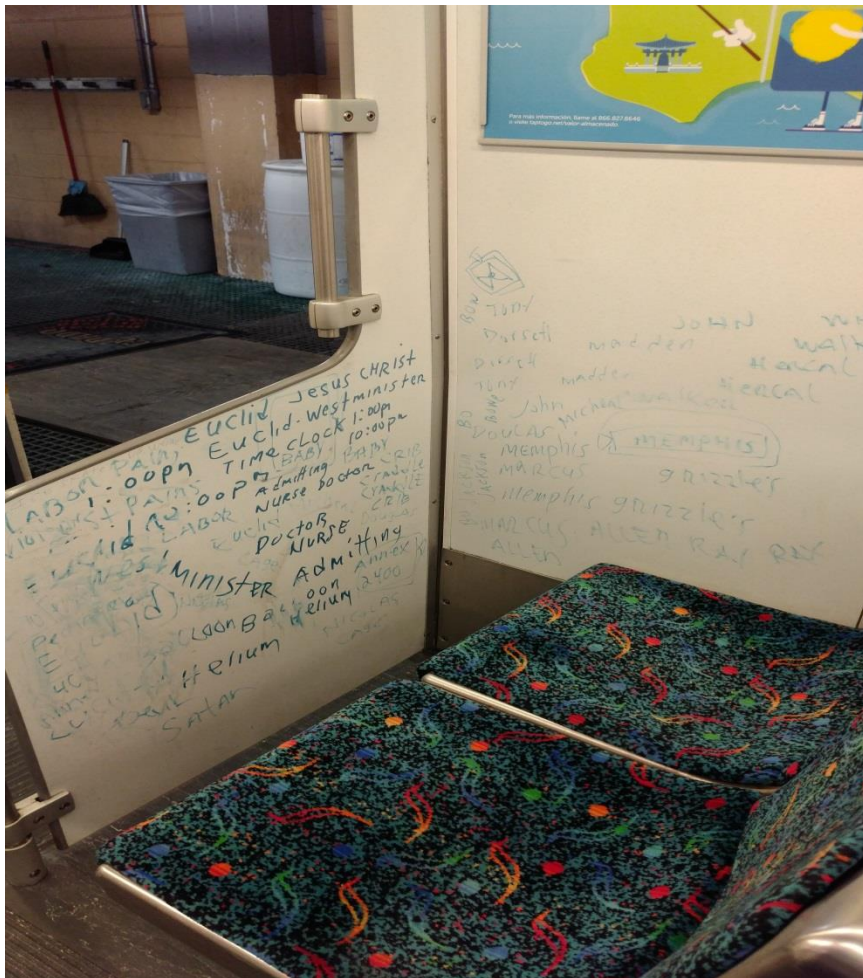


February 2017 Vandalism & Graffiti - All Rail				
	Qty	Labor	Materials	Totals
Windows Replaced	105	\$ 20,415	\$ 37,116	\$ 57,531
Vandal Shields Replaced	1,070	\$ 32,109	\$ 14,609	\$ 46,718
Seats Cleaned	460	\$ 9,129	\$ 40	\$ 9,169
Seats Inserts Replaced	387	\$ 12,075	\$ 10,584	\$ 22,659
Graffiti Removal - Other	1,221	\$ 28,026	\$ 16,568	\$ 44,594
Repainting Panels	206	\$ 6,489	\$ -	\$ 6,489
<b>Totals</b>	<b>3,449</b>	<b>\$ 108,243</b>	<b>\$ 78,917</b>	<b>\$ 187,160</b>

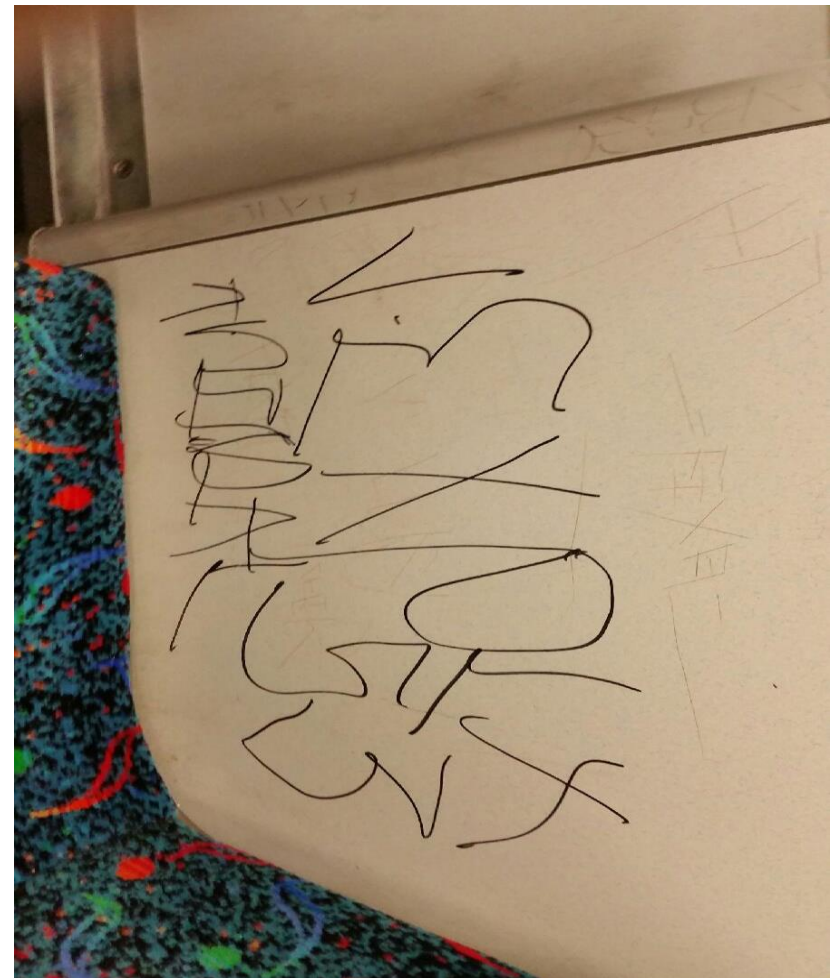
# Vandalism & Graffiti Pictures

## February 2017

## Blue Line



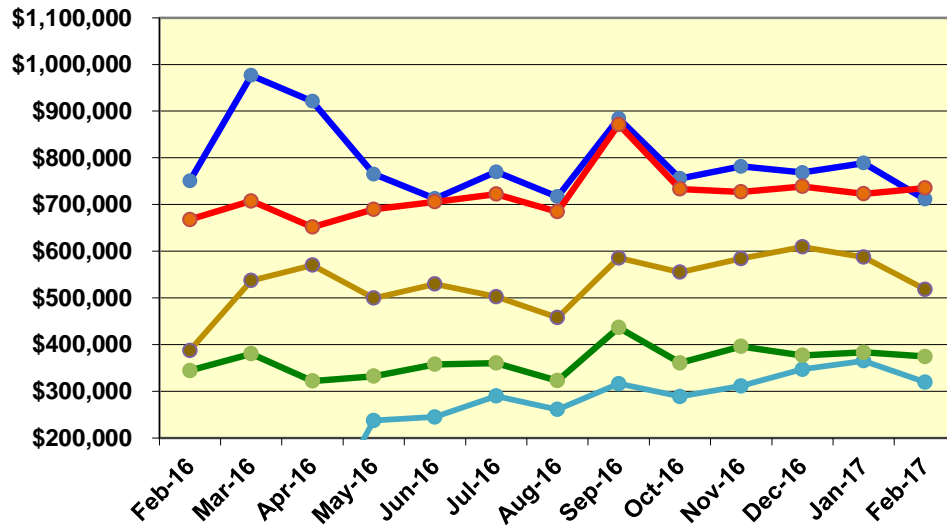
## Green Line



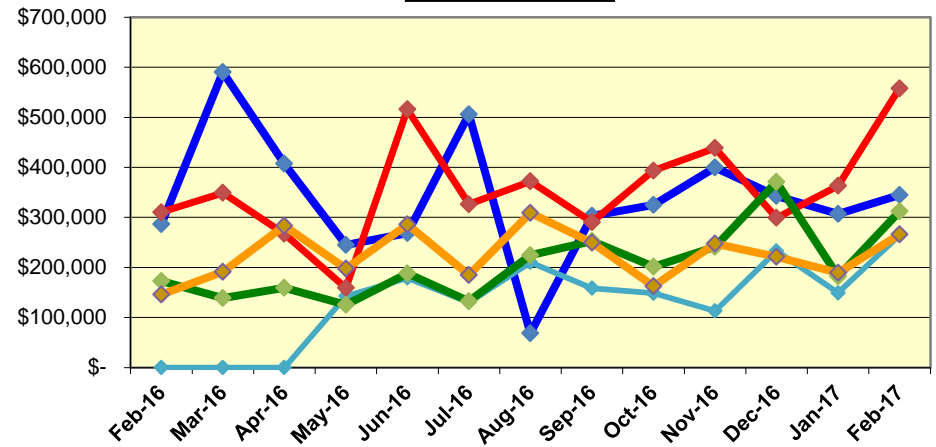
# Labor and Material Costs

## February 2016-2017

Labor Costs



Material Costs



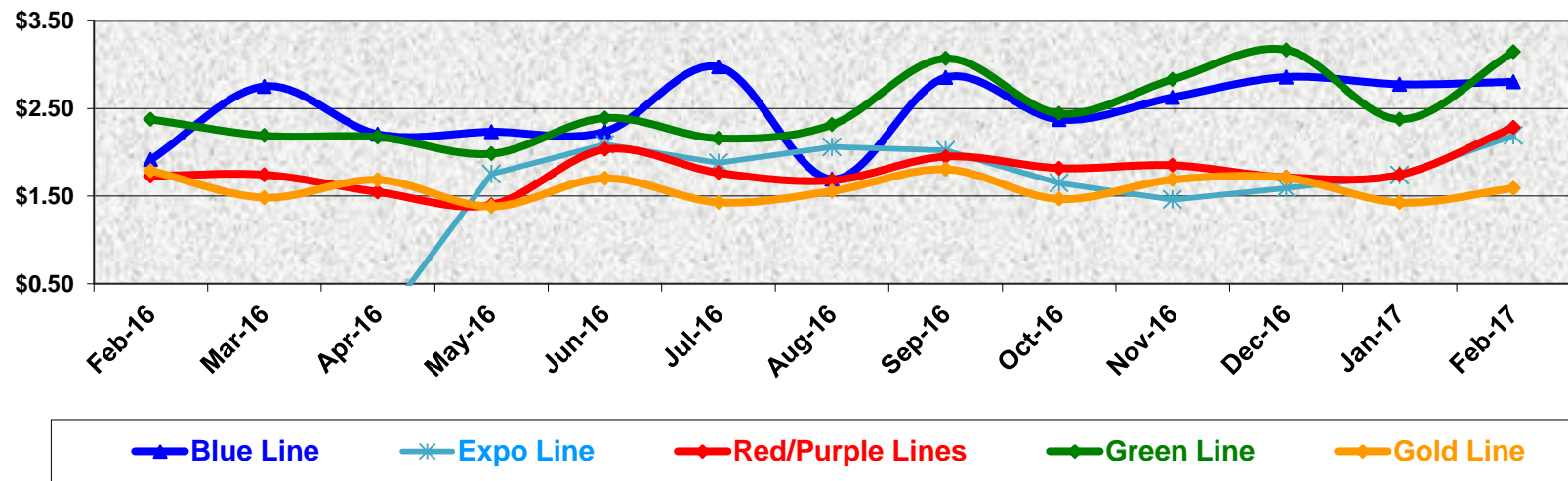
	Feb-16	Mar-16	Apr-16	May-16	Jun-16	Jul-16	Aug-16	Sep-16	Oct-16	Nov-16	Dec-16	Jan-17	Feb-17
<b>Labor Costs</b>													
Blue Line	\$ 750,961	\$ 976,568	\$ 920,945	\$ 765,108	\$ 712,774	\$ 770,143	\$ 716,923	\$ 884,555	\$ 755,958	\$ 781,662	\$ 768,756	\$ 788,785	\$ 711,354
Expo Line	\$ -	\$ -	\$ -	\$ 237,630	\$ 245,339	\$ 290,199	\$ 261,217	\$ 316,395	\$ 289,213	\$ 311,627	\$ 347,280	\$ 365,354	\$ 320,019
Red/Purple Lines	\$ 667,772	\$ 707,560	\$ 651,771	\$ 689,764	\$ 705,772	\$ 722,363	\$ 684,555	\$ 871,431	\$ 733,202	\$ 727,093	\$ 738,672	\$ 723,038	\$ 735,394
Green Line	\$ 344,701	\$ 380,356	\$ 322,108	\$ 332,662	\$ 357,807	\$ 360,682	\$ 323,087	\$ 436,825	\$ 360,963	\$ 396,278	\$ 376,933	\$ 383,591	\$ 374,747
Gold Line	\$ 387,820	\$ 537,337	\$ 570,186	\$ 499,874	\$ 529,761	\$ 502,967	\$ 458,067	\$ 585,582	\$ 555,213	\$ 584,203	\$ 609,215	\$ 587,313	\$ 518,524
Totals	\$ 2,151,255	\$ 2,601,822	\$ 2,465,011	\$ 2,525,038	\$ 2,551,454	\$ 2,646,353	\$ 2,443,849	\$ 3,094,789	\$ 2,694,548	\$ 2,800,863	\$ 2,840,856	\$ 2,848,080	\$ 2,660,038

<b>Material Costs</b>													
Blue Line	\$ 286,531	\$ 589,879	\$ 407,085	\$ 245,001	\$ 268,750	\$ 505,721	\$ 68,670	\$ 303,202	\$ 324,999	\$ 399,427	\$ 342,695	\$ 306,710	\$ 344,931
Expo Line	\$ -	\$ -	\$ -	\$ 142,495	\$ 179,099	\$ 130,419	\$ 210,312	\$ 158,666	\$ 148,670	\$ 113,229	\$ 233,001	\$ 149,260	\$ 264,561
Red/Purple Lines	\$ 310,489	\$ 349,093	\$ 267,284	\$ 159,258	\$ 515,978	\$ 326,251	\$ 371,920	\$ 290,597	\$ 393,507	\$ 438,480	\$ 299,157	\$ 363,192	\$ 557,616
Green Line	\$ 172,625	\$ 138,673	\$ 159,615	\$ 125,334	\$ 188,111	\$ 132,247	\$ 224,414	\$ 252,988	\$ 201,438	\$ 241,344	\$ 370,755	\$ 182,518	\$ 312,113
Gold Line	\$ 145,891	\$ 191,351	\$ 283,211	\$ 197,620	\$ 285,877	\$ 185,153	\$ 308,906	\$ 249,398	\$ 162,899	\$ 247,842	\$ 221,172	\$ 189,520	\$ 265,930
Totals	\$ 915,536	\$ 1,268,996	\$ 1,117,195	\$ 869,708	\$ 1,437,815	\$ 1,279,791	\$ 1,184,222	\$ 1,254,851	\$ 1,231,513	\$ 1,440,322	\$ 1,466,779	\$ 1,191,200	\$ 1,745,150

# Cost Per Mile February 2016-2017

Cost per mile:	Feb-16	Mar-16	Apr-16	May-16	Jun-16	Jul-16	Aug-16	Sep-16	Oct-16	Nov-16	Dec-16	Jan-17	Feb-17	Average
Blue Line	\$1.92	\$2.75	\$2.21	\$2.23	\$2.24	\$2.97	\$1.69	\$2.85	\$2.37	\$2.63	\$2.86	\$2.78	\$2.80	\$2.48
Expo Line	\$0.00	\$0.00	\$0.00	\$1.75	\$2.09	\$1.88	\$2.06	\$2.02	\$1.65	\$1.46	\$1.59	\$1.74	\$2.19	\$1.84
Red/Purple Lines	\$1.73	\$1.74	\$1.55	\$1.40	\$2.03	\$1.77	\$1.68	\$1.95	\$1.82	\$1.85	\$1.71	\$1.74	\$2.28	\$1.79
Green Line	\$2.38	\$2.19	\$2.17	\$1.98	\$2.39	\$2.16	\$2.31	\$3.07	\$2.44	\$2.83	\$3.17	\$2.38	\$3.15	\$2.51
Gold Line	\$1.79	\$1.48	\$1.68	\$1.38	\$1.70	\$1.43	\$1.56	\$1.81	\$1.47	\$1.69	\$1.71	\$1.43	\$1.59	\$1.59

## Cost per Mile





# ATU Absences vs. Overtime

## February 2017

ABSENCE TYPE and HOURS	3941 Blue	3947 Expo	3942 Red	3943 Green	3944 Gold	3948 Monrovia	Total
AWP-ABSENT W/O PERMISSION	-	-	-	32	-	16	48
BER-BEREAVEMENT	24	-	-	-	40	32	96
CTO-COMPENSATORY TIME OFF	281	180	288	84	24	152	1,009
CUT-EMPLOYEE LEAVES EARLY	0	1	1	-	-	-	1
DSL-DISABILITY LEAVE/LONG	816	-	-	218	-	-	1,034
EFH-EMG. FLOAT HOL.	-	16	8	8	-	24	56
ETO-EXCUSED TIME OFF	72	61	42	10	1	18	203
FMI-FAM IND INJURY	72	-	-	160	-	-	232
FML-FAMILY CARE LEAVE	56	448	227	-	-	72	803
FMS-FAMILY LEAVE SICK	40	72	35	-	-	-	147
HLF-HOLIDAY FLOATING	216	72	320	72	40	72	792
II-INDUSTRIAL INJURY	-	-	-	160	-	8	168
IPD-INJURED PARTIAL DAY	-	-	-	4	-	-	4
JUR-JURY DUTY	8	-	-	8	-	16	32
LC1-LABOR CODE 233	352	96	153	104	236	156	1,097
LTI-OCCPIL/LONGTRM INJ LEAVE	248	-	640	-	-	-	888
MLN-MILITARY ABSENCE-UNPAID	-	-	8	-	-	-	8
OWP-OFF WITH PERMISSION	104	-	-	-	-	-	104
RTO-REQUESTED TIME OFF-NO PAY	56	-	-	16	-	9	81
SCK-SICK PAY	264	68	160	80	40	155	767
SCW-SICK WITHOUT PAY	76	8	-	104	-	36	224
SPN-SCHOOL PARTNER NOT PAID	-	-	8	-	-	-	8
SUS-DISCIPLINARY SUSPENSION	8	-	-	-	-	-	8
TAR-TARDY	2	2	1	1	-	1	7
VAC-VACATION	1,010	224	816	341	240	400	3,030
VAS-VACATION WHILE SICK	-	-	11	-	-	-	11
*TRAINING	20	120	-	288	80	-	508
<b>Total Absence Hours</b>	<b>3,726</b>	<b>1,367</b>	<b>2,717</b>	<b>1,689</b>	<b>701</b>	<b>1,167</b>	<b>11,367</b>
**ATU Number of Work Force (active)	104	42	103	43	17	61	370
Full Work Force hours/month	18,023	7,279	17,850	7,452	2,946	10,573	64,121
<b>Absence as a % of Work Force</b>	<b>21%</b>	<b>19%</b>	<b>15%</b>	<b>23%</b>	<b>24%</b>	<b>11%</b>	<b>18%</b>

OVERTIME TYPE and HOURS	3941 Blue	3947 Expo	3942 Red	3943 Green	3944 Gold	3948 Monrovia	Total
CTB-COMPENSATORY TIME TO BANK	76	25	102	76	17	75	371
OTP-PREM OVERTIME	3,993	1,436	3,942	2,243	70	924	12,608
WLO-Worked Lunch Overtime	141	173	225	72	31	69	710
<b>Total Overtime Hours</b>	<b>4,209</b>	<b>1,633</b>	<b>4,269</b>	<b>2,391</b>	<b>118</b>	<b>1,068</b>	<b>13,688</b>
<b>Overtime as a % of Work Force</b>	<b>23%</b>	<b>22%</b>	<b>24%</b>	<b>32%</b>	<b>4%</b>	<b>10%</b>	<b>21%</b>

\*Training hours captured by Instruction Department are added to Absences Report.

\*\*ATU Employee Numbers from ATU Manpower Status Report (last week of the month)



**Metro**

Note: Overtime also covers other required activities, including Training, Component Overhaul, and Special Events.



# RFS Instruction Department Activities February 2017

## LRV Training classes completed during the month of February 2017

Description	Course Hours	Student Count	Training Hours
<b><u>Blue Line Training - (P865/2020 &amp; P2000 LRVs):</u></b>			
WAYSIDE WORKER PROTECTION	4	5	20
<b>Total Blue Line Training (Hours):</b>			<b>20</b>
<b><u>Light Rail Training [In Monrovia (P2550 &amp; P3010 LRVs)]:</u></b>			
No vehicle training this month			0
<b>Total Light Rail Training (Hours):</b>			<b>0</b>
<b><u>Expo Line Training - (P865/2020, P2000, &amp; P3010 LRVs):</u></b>			
RFS KINKISHARYO VEHICLE SYSTEMS	40	3	120
<b>Total Expo Line Training (Hours):</b>			<b>120</b>
<b><u>Gold Line Training (P2550 LRVs):</u></b>			
RFS HEGENSCHIEDT WHEEL TRUE - 24	40	2	80
<b>Total Gold Line Training (Hours):</b>			<b>80</b>
<b><u>Green Line Training (P2000 LRVs):</u></b>			
RFS SIEMENS 2000 AUX. INVERTER	32	3	96
RFS SIEMENS 2000 PROPULSION	80	2	160
RFS SIEMENS 2000 VEHICLE SYSTEMS	16	2	32
<b>Total Green Line Training (Hours):</b>			<b>288</b>

**Total RFS Instruction for the month of February 2017 (Hours):** **1,372**

**Core Vehicle Training Completed:**      **BLUE**      **EXPO**      **GOLD**      **GREEN**

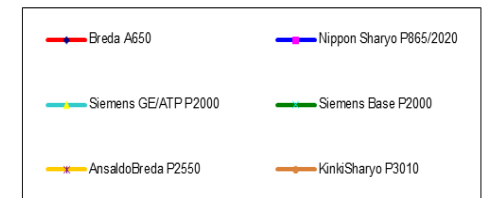
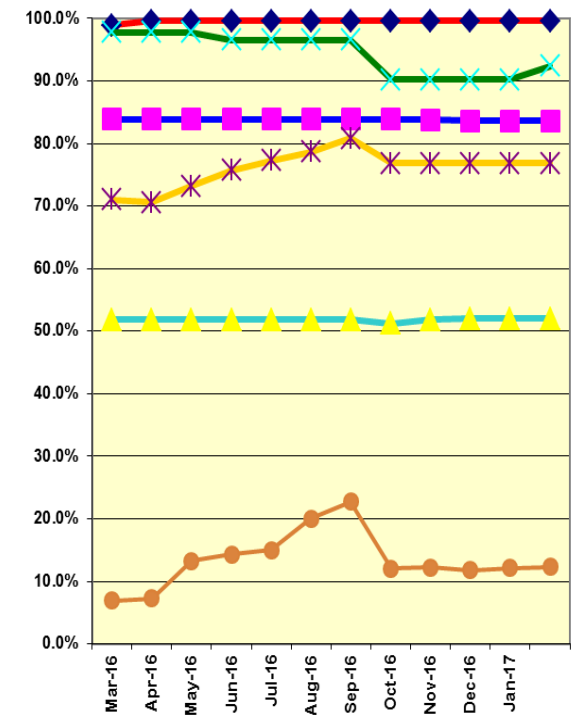
**Percentage of core vehicle training complete:**      **83.6%**      **21.3%**      **76.9%**      **92.4%**

Siemens P2000 training complete:      52.0%      39.8%      N/A      N/A

KinkiSharyo P3010 training complete:      0.5%      18.1%      23.9%      N/A

**Average Specialist Rail Experience Level in Years:**      **15.4**      **3.4**      **7.2**      **10.4**

## Core Training Completed



variations caused by new hires, employee transfers, & training completed

# RFS Instruction Department Activities

## February 2017

### HRV & Other Training classes completed during the month of February 2017

<u>Description</u>	<u>Course Hours</u>	<u>Student Count</u>	<u>Training Hours</u>
<b><u>Red Line Training - Breda A650 HRV:</u></b>			
NO VEHICLE TRAINING THIS MONTH	0	0	0
<b>Total Red Line Training Hours</b>			<b>0</b>
<b><u>JAC Training (P2000 &amp; P2550 LRVs)</u></b>			
RFS ANSALDOBREDA 2550 FRICTION BRAKES	40	4	160
RFS ANSALDOBREDA 2550 PROPULSION	80	5	400
RFS ANSALDOBREDA 2550 CAR BODY	16	4	64
RFS SIEMENS 2000 FRICTION BRAKES	48	5	240
<b>Total Expo Line Training Hours</b>			<b>864</b>

<u>Other Instruction Activities</u>	<u>Curriculum</u>	<u>Administrative</u>	<u>Technical Support</u>	<u>Total</u>
A650 Curriculum, Administrative, and Technical Support	32	60	60	152
P865/P2020 Curriculum, Administrative, and Technical Support	0	8	16	24
P2000 Curriculum, Administrative, and Technical Support	32	32	40	104
P2550 Curriculum, Administrative, and Technical Support	8	32	24	64
P3010 Curriculum, Administrative, and Technical Support	320	32	0	352
Local Rodeo Preparation				64
Time Off (HOL, TOV, & SCK)				96
<b>Total Other Instruction Activities</b>				<b>856</b>

<b><u>Core Vehicle Training Completed:</u></b>	<b><u>RED</u></b>	<b>JAC Core</b>	<b><u>JAC</u></b>
Percentage of Core Vehicle Training Complete:	<b>99.6%</b>	(P2000)	<b>43.6%</b>
		(P2550)	<b>36.7%</b>
Average Specialist Rail Experience Level in Years:	<b>13.0</b>		<b>0.6</b>