



Rail Fleet Services Monthly Report January 2017

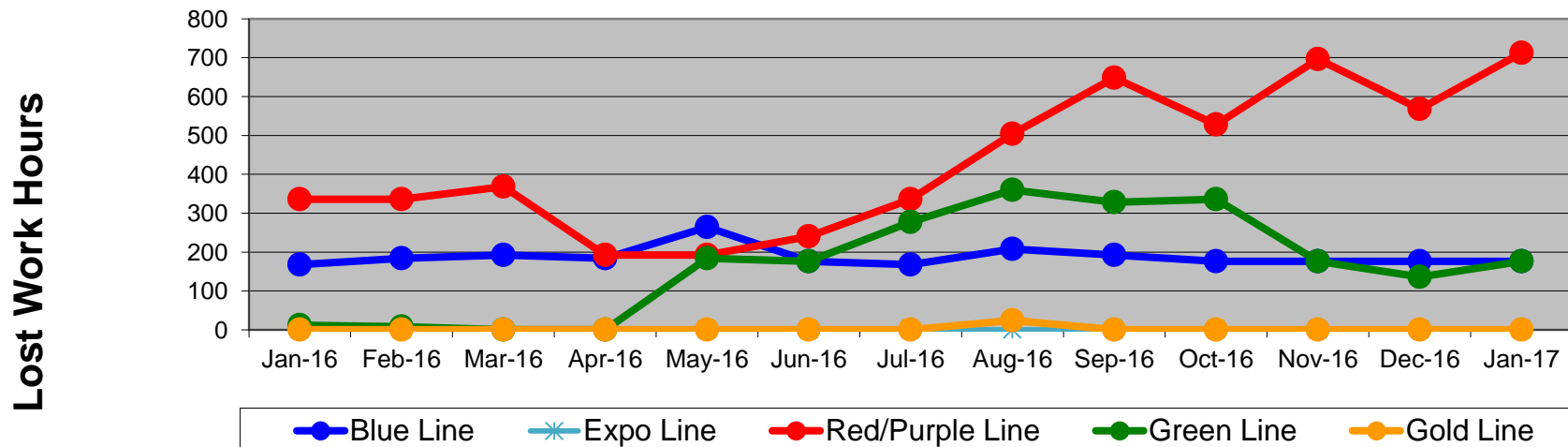
Table of Contents

•	Safety & Cleanliness		
	- Industrial Injuries	Page	3
	- Rail Vehicle Accidents & Major Incidents	Page	4
	- Car Cleanliness	Page	5
•	Customer Service		
	- Service Delivery – AM/PM Pull-Outs	Page	6
	- Vehicle Utilization – Red Line	Page	7
	- Vehicle Utilization – Blue Line & Expo Line	Page	8
	- Vehicle Utilization – Green Line & Gold Line	Page	9
	- All Train Delay Incidents	Page	10
	- Mean Miles Between Failures (Major) & MMBF by Division	Page	11-12
	- Mileage Between Data Range (by month)	Page	13
•	Business Processes		
	- Top Incident Categories	Page	14
	- Major Incidents	Page	15
	- Preventive Maintenance Compliance	Page	16
	- RFS Leader Wrench Turning	Page	17
•	Finance		
	- Vandalism & Graffiti Costs	Page	18
	- Vandalism & Graffiti Pictures	Page	19
	- Labor & Material Costs	Page	20
	- Cost per mile	Page	21
	- Absence vs. Overtime	Page	22
•	Growth		
	- RFS Instruction Department Activities	Page	23-24

Industrial Injuries – Lost Work Hours January 2016-2017

	Jan-16	Feb-16	Mar-16	Apr-16	May-16	Jun-16	Jul-16	Aug-16	Sep-16	Oct-16	Nov-16	Dec-16	Jan-17	13-Month Period
Blue Line	168	184	192	184	264	176	168	208	192	176	176	176	176	2,440
Expo Line	0	0	0	0	0	0	0	0	0	0	0	0	0	0
Red/Purple Line	336	336	368	192	192	240	336	504	648	528	696	568	712	5,656
Green Line	12	8	0	0	184	176	277	360	328	336	176	136	176	2,169
Gold Line	0	0	0	0	0	0	0	24	0	0	0	0	0	24
Totals	516	528	560	376	640	592	781	1,096	1,168	1,040	1,048	880	1,064	10,289

Industrial Injuries (lost work hours)



Rail Vehicle Accidents & Major Incidents

January 2016-2017

Repair Costs	Jan-16	Feb-16	Mar-16	Apr-16	May-16	Jun-16	Jul-16	Aug-16	Sep-16	Oct-16	Nov-16	Dec-16	Jan-17	13-Month Period
Blue Line	\$4,570	\$7,379	\$2,037	\$1,232	\$513	\$0	\$0	\$3,211	\$665	\$28,089	\$0	\$2,352	\$170,311	\$220,359
Expo Line	\$0	\$0	\$0	\$0	\$0	\$0	\$576	\$0	\$12,921	\$9,468	\$0	\$381	\$763	\$24,109
Red/Purple Line	\$0	\$0	\$0	\$1,284	\$0	\$1,932	\$840	\$552	\$0	\$0	\$0	\$0	\$0	\$4,608
Green Line	\$0	\$0	\$0	\$0	\$0	\$0	\$0	\$51,535	\$0	\$0	\$0	\$0	\$0	\$51,535
Gold Line	\$0	\$53	\$1,487	\$4,646	\$0	\$19,451	\$564	\$0	\$0	\$5,694	\$0	\$0	\$3,789	\$35,684
Totals	\$4,570	\$7,432	\$3,524	\$7,162	\$513	\$21,383	\$1,980	\$55,298	\$13,586	\$43,251	\$0	\$2,733	\$174,863	\$336,295

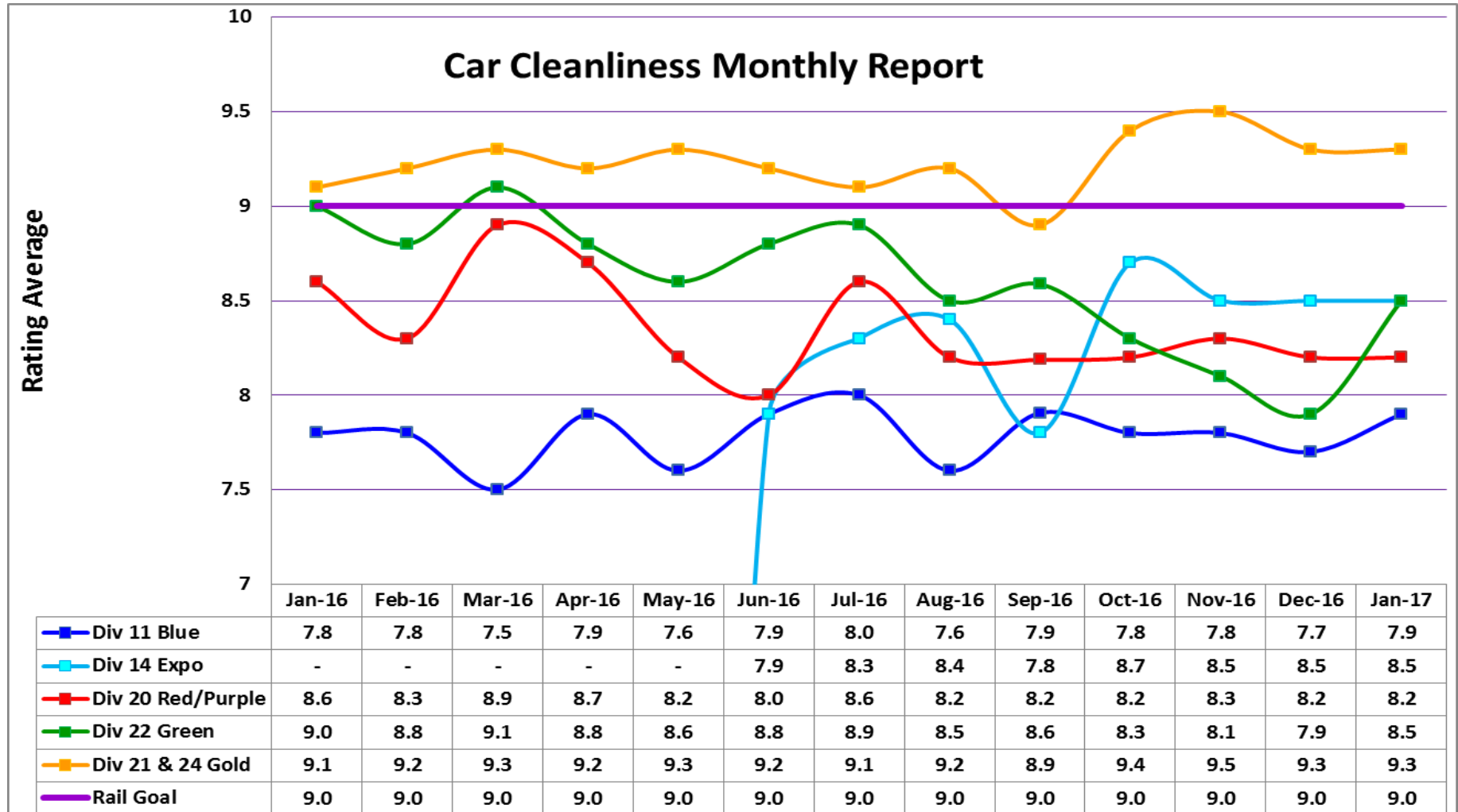
Rail Vehicle Accident Costs - January 2017				
Date	Incident #	Problem Code	Incident Description	Repair Cost
Metro Blue Line				
1/2/17	2818321	10-75	OCS pole has been damaged at Main Yard, Signal 3N, NB.	\$ 166,192
1/6/17	2819869	10-72	A 10-72 was reported at El Segundo Grade Crossing, NB.	\$ 1,357
1/11/17	2821942	10-73	A 10-73 was reported at Flower and Washington, Track 1.	\$ 1,200
1/15/17	2823115	10-73	A 10-73 was reported at 18th and Flower, Track 2, SB.	\$ 764
1/15/17	2823179	10-75	Car 120 derailed while exiting North Loop and into Track 12.	\$ 706
1/26/17	2827635	10-73	A 10-73 was reported at Washington & Broadway, Track 1, NB.	\$ 92
Metro Blue Line Total				\$ 170,311
Metro Expo Line				
1/8/17	2820407	10-73	A 10-73 was reported at 7th St. & Colorado. Vehicle made left turn in front of the train, the motorist left the scene after the collision.	\$ 763
Metro Expo Line Total				\$ 763
Metro Gold Line				
1/2/17	2818332	10-71	A 10-71 was reported at Arcadia Station, Track 2.	\$ 520
1/8/17	2820428	10-73	A 10-73 was reported at Temple St. & Alameda. Vehicle made right turn in front of the train.	\$ 2,753
1/22/17	2825681	10-71	A 10-71 was reported at Arroyo Verde. Train made contact with a TV left on the ROW.	\$ 516
Metro Gold Line Total				\$ 3,789
Grand Total				\$ 174,863
10-71 = Train vs. Object/ 10-72 = Train vs. Pedestrian/ 10-73 = Train vs. Vehicle/ 10-74 = Train vs. MTA Vehicle/ 10-75 = Derailment				

Note: Repair costs are only the expenses captured during the time period of the report. Actual costs may be significantly higher, if repairs are spread out over several months.



Metro

Rail Vehicle – Car Cleanliness January 2016-2017



Service Delivery January 2017

January 2017 - Service Delivery

Blue Line Fleet Size: 70

Pull Out	Vehicles Required	Average Available	% Up (Down)
Weekday:	57	50	88%
Weekend:	26	39	150%

Monthly Mileage: 394,570

Expo Line Fleet Size: 59

Pull Out	Vehicles Required	Average Available	% Up (Down)
Weekday:	47	45	96%
Weekend:	32	43	134%

Monthly Mileage: 295,808

Red/Purple Line Fleet Size: 104

Pull Out	Vehicles Required	Average Available	% Up (Down)
Weekday:	64	76	119%
Weekend:	40	68	170%

Monthly Mileage: 623,020

Green Line Fleet Size: 29

Pull Out	Vehicles Required	Average Available	% Up (Down)
Weekday:	22	22	100%
Weekend:	14	17	121%

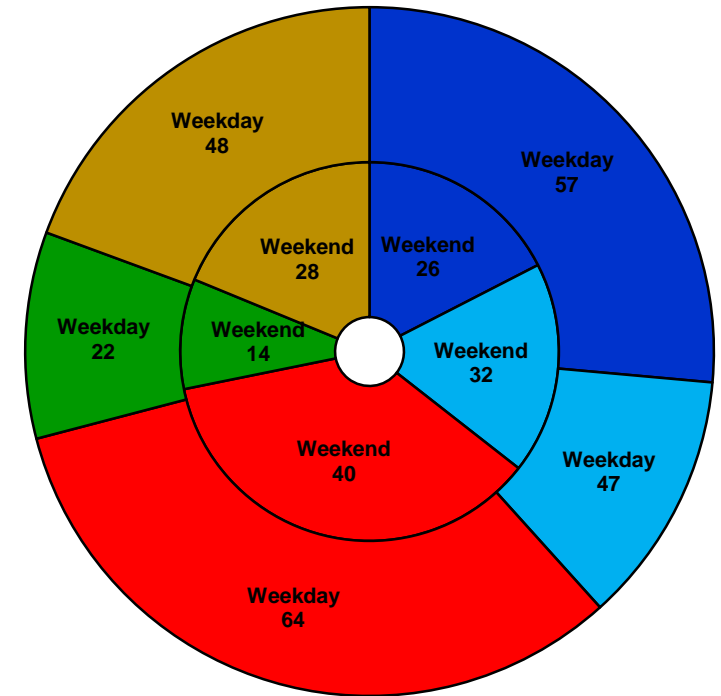
Monthly Mileage: 238,211

Gold Line Fleet Size: 63

Pull Out	Vehicles Required	Average Available	% Up (Down)
Weekday (Div 21):	10	10	100%
Weekday (Div 24):	38	41	108%
Weekend (Div 24):	28	40	143%

***Monthly Mileage: 544,701**

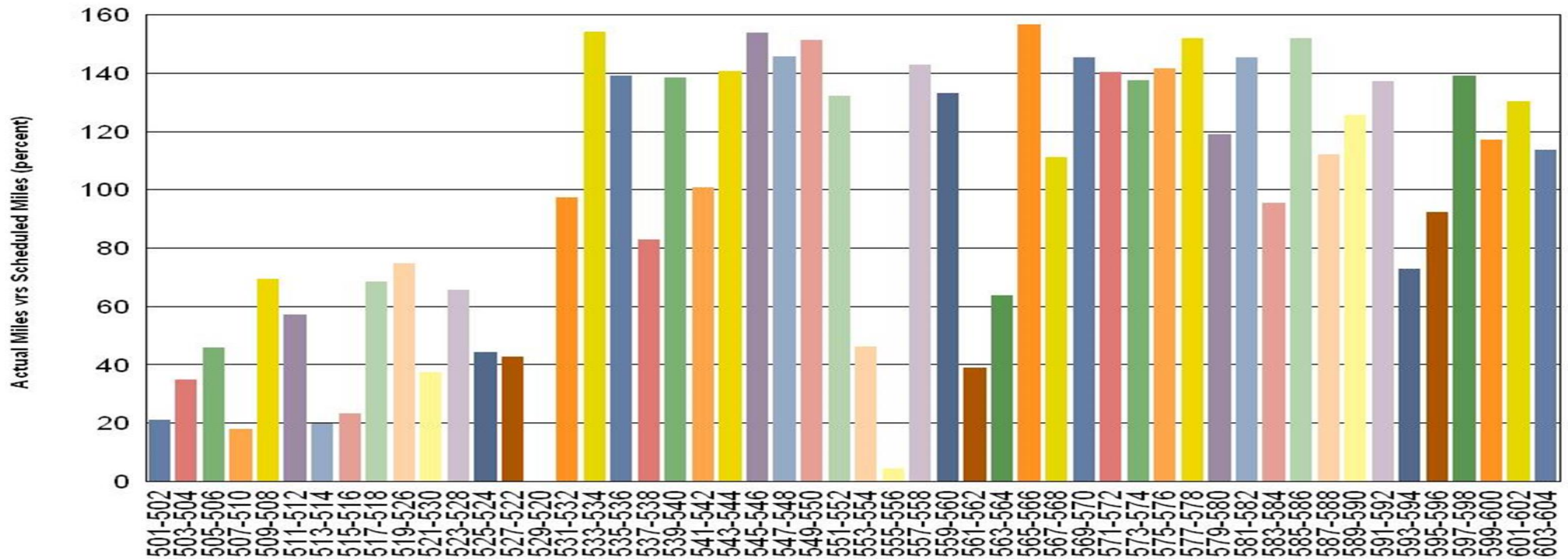
* Gold Line monthly mileage includes Division 21 and 24.



■ Blue Line
 ■ Expo Line
 ■ Red/Purple Line
 ■ Green Line
 ■ Gold Line

Vehicle Utilization January 2017

Metro Red/Purple Line (104 Cars)



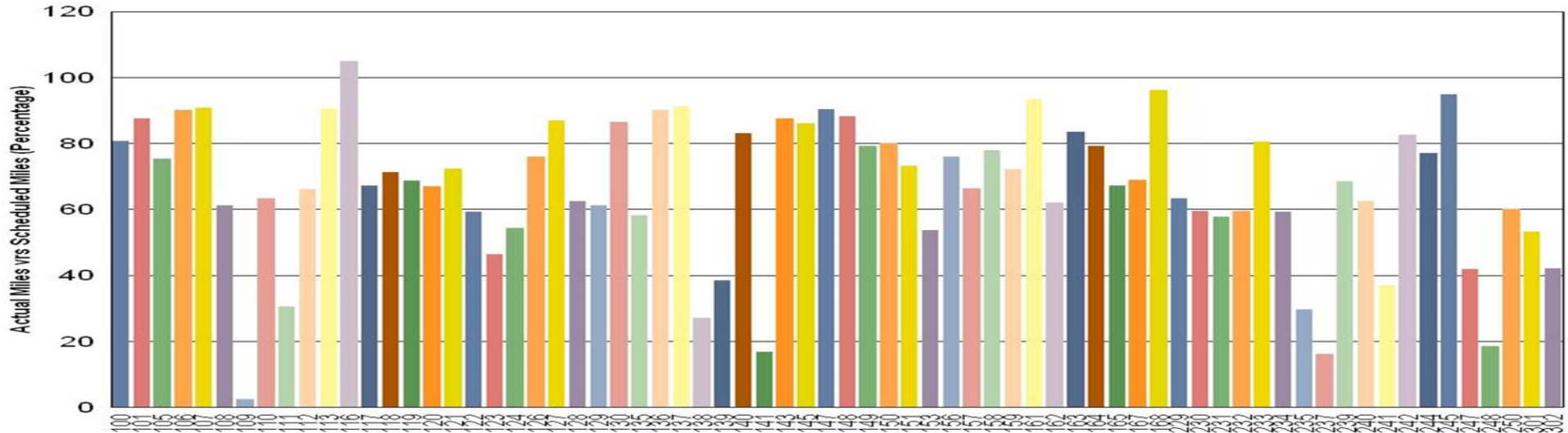
Red/Purple Line:

The following cars were out of service due to:

- Car # 501-502 – Propulsion Fault
- Car # 503-504 – Propulsion Fault
- Car # 507-510 – Propulsion Fault
- Car # 513-514 – Pending for Blower Motor
- Car # 515-516 – ATP Issues
- Car # 521-530 – Emergency Brake Application
- Car # 529-520 – Pending for DC Traction Motor
- Car # 555-556 – Propulsion Fault
- Car # 561-562 – 90K Inspection, Component Overhaul

Vehicle Utilization January 2017

Metro Blue Line (65 Cars)



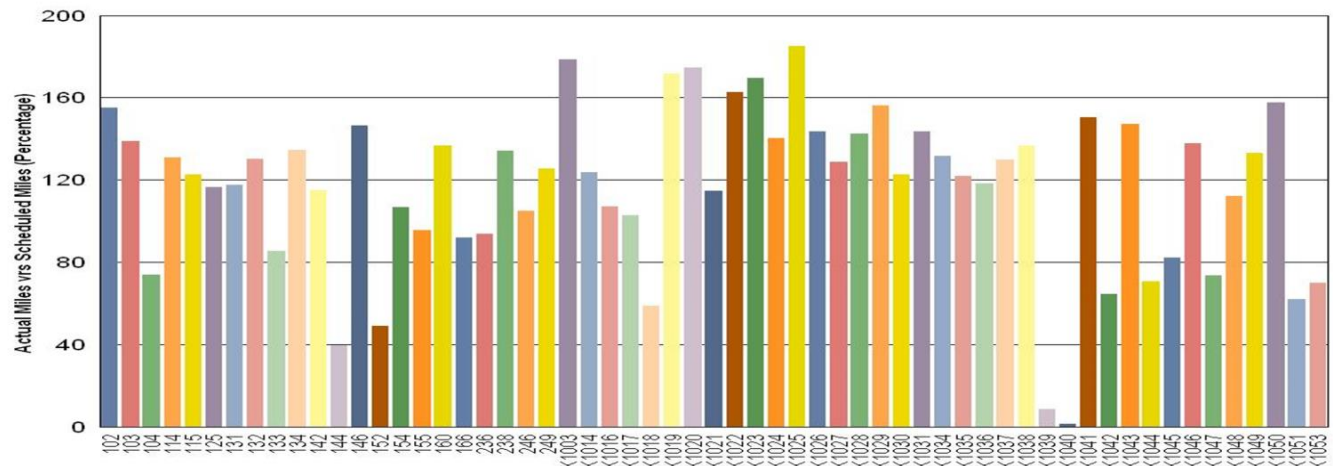
Blue Line: The following cars were out of service due to:

- Car # 109 – Derailment Damage
- Car # 111 – “C” Truck Bearing Overhaul
- Car # 138 – “C” Truck Bearing Overhaul
- Car # 139 – Inverter/Air Hose Campaigns
- Car # 141 – “C” Truck Bearing Overhaul
- Car # 235 – Exterior Painting/90K Inspection
- Car # 237 – Exterior Painting/90K Inspection
- Car # 241 – Training/90K Inspection
- Car # 248 – A-end Prop Fault/90K Inspection

Expo Line: The following car was out of service due to:

- Car # K1039 – Friction Brake – Decelerometer Issues/Flats
- Car # K1040 – Accident Body Work Repair

Metro Expo Line (63 Cars)



Vehicle Utilization January 2017

Metro Green Line (29 Cars)

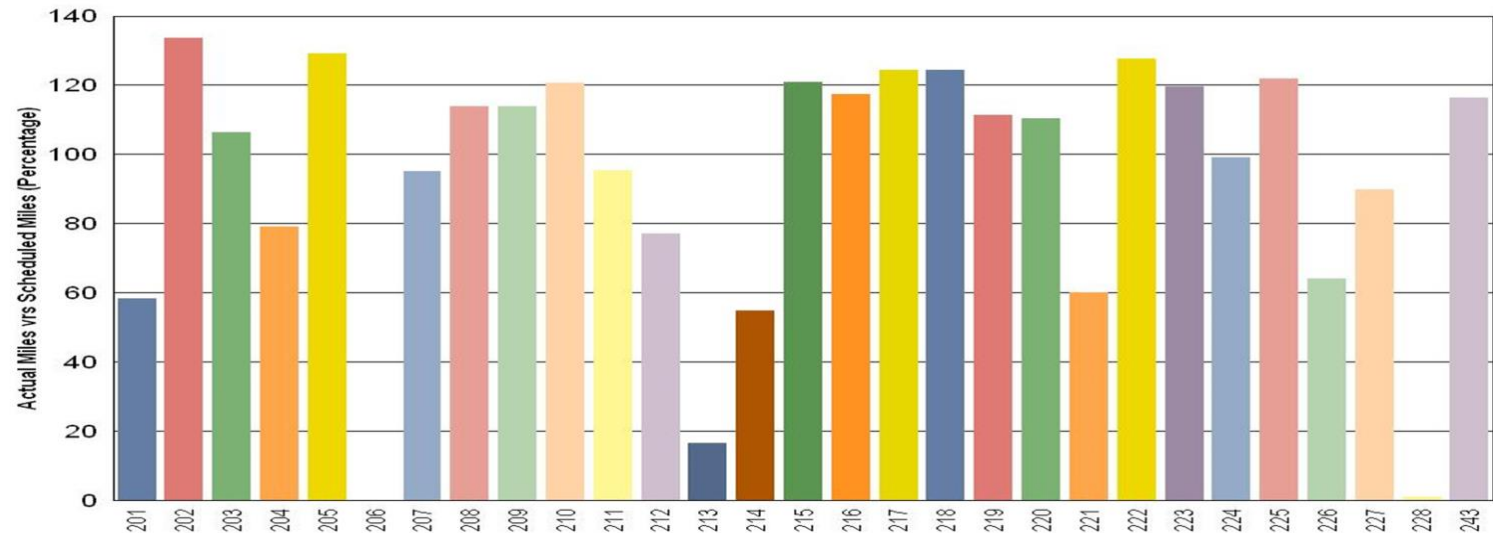
Green Line:

The following cars were out of service due to:

Car # 206 – EMI/Engineering Hold

Car # 213 – Propulsion Faults

Car # 228 – EMI/Propulsion Faults



Metro Gold Line (62 Cars)

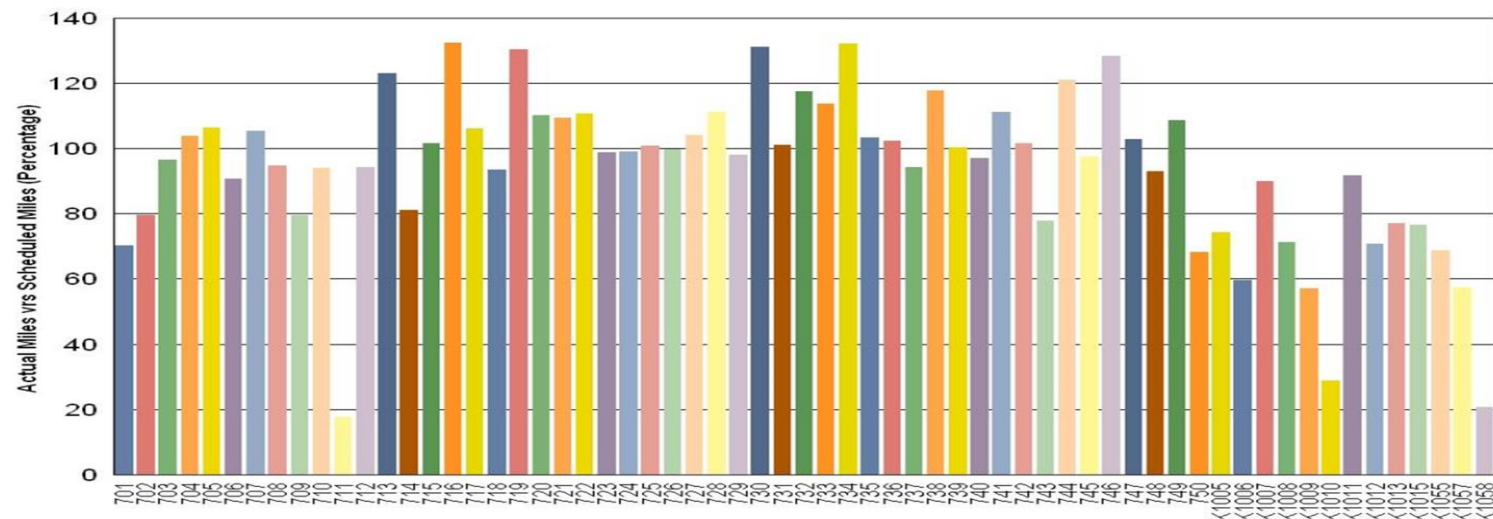
Gold Line:

The following cars were out of service due to:

Car # 711 – Electrical Cable Repair

Car # K1010 – Repair damaged caused by hitting a downed tree

Car # K1058 – Warranty repairs on PA & Doors

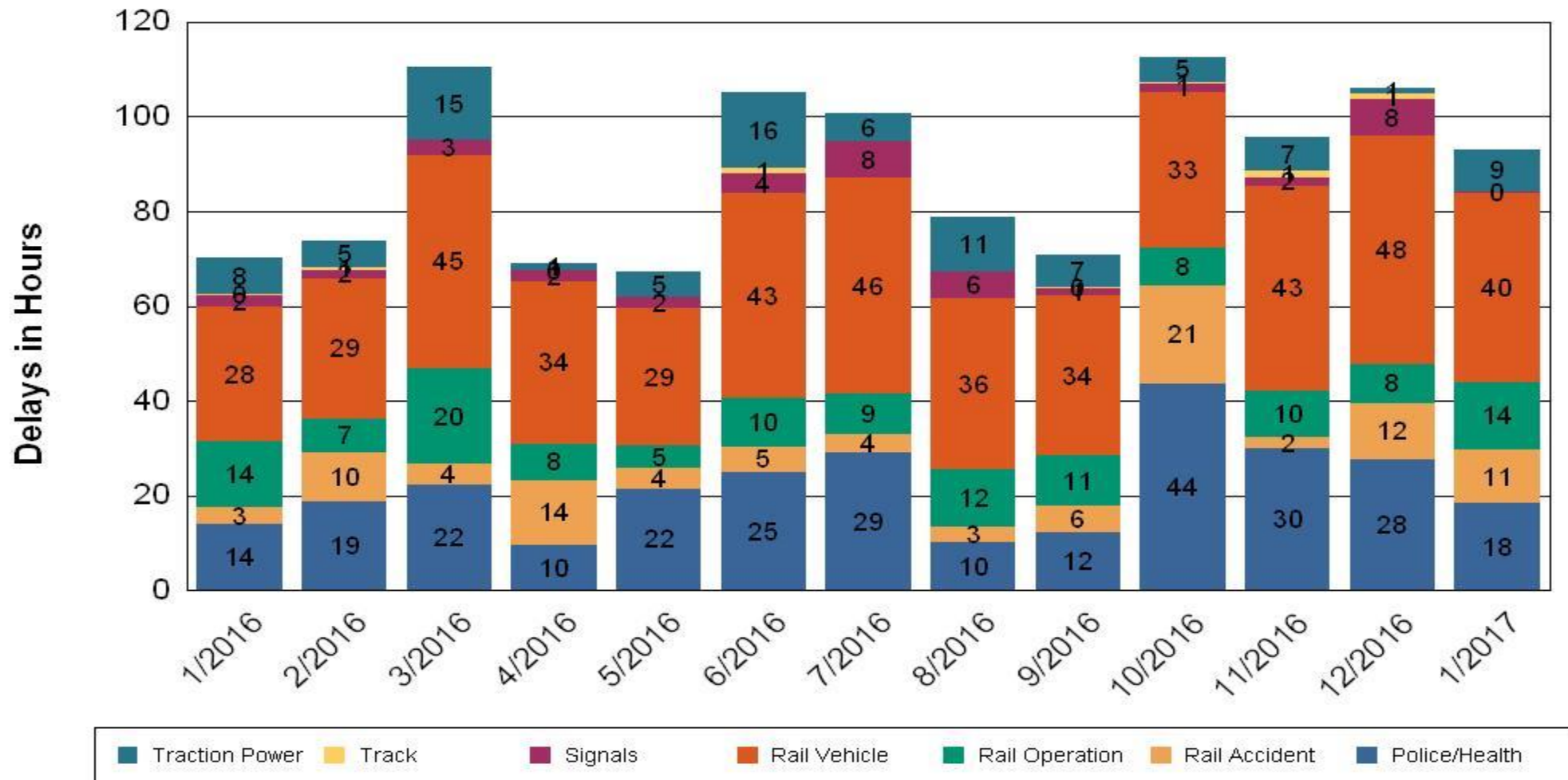


•Percentage includes an average 4% mileage deduction for yard mileage and vehicle testing.

All Train Delays (Hours) January 2016-2017

All Train Delays

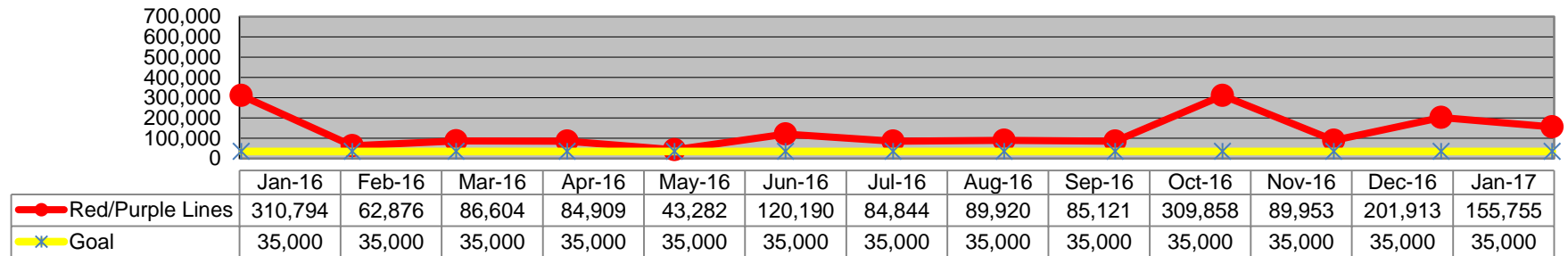
Totals Include the delay to all trains involved (not just the primary incident)



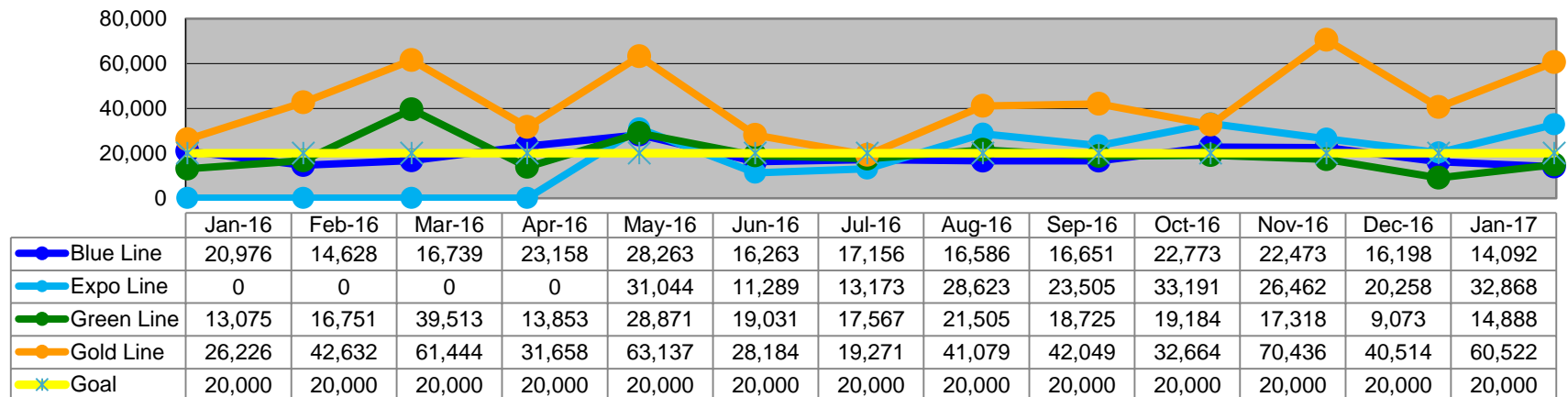
Mean Miles Between Major Failures (MMBF)

January 2016-2017

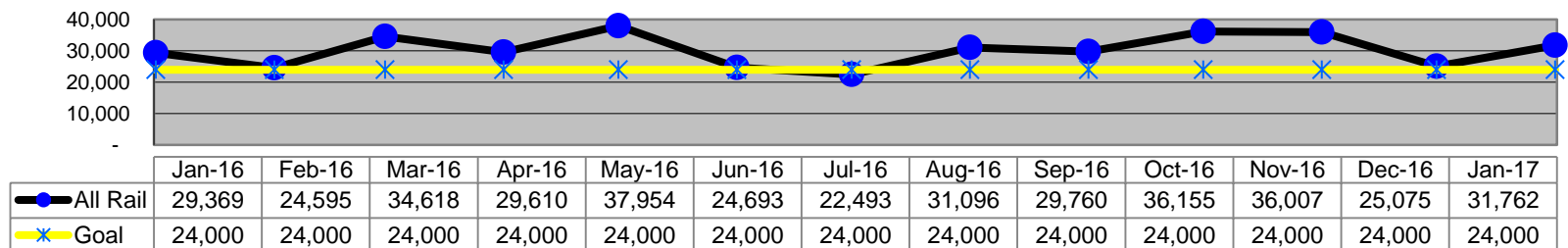
Mean Miles Between Major Failures - Heavy Rail



Mean Miles Between Major Failures - Light Rail

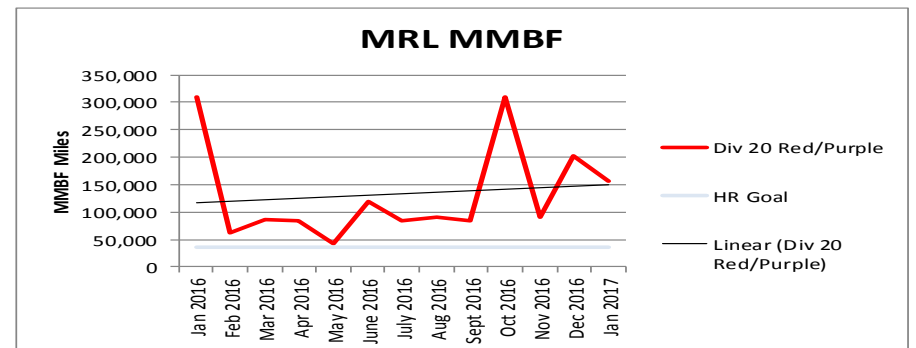
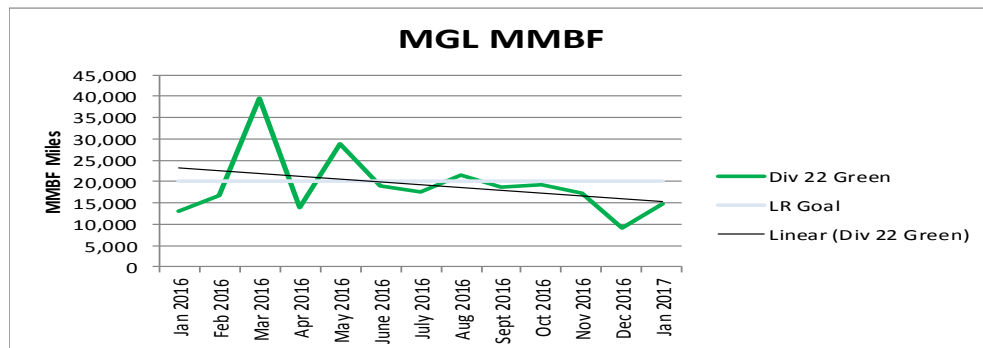
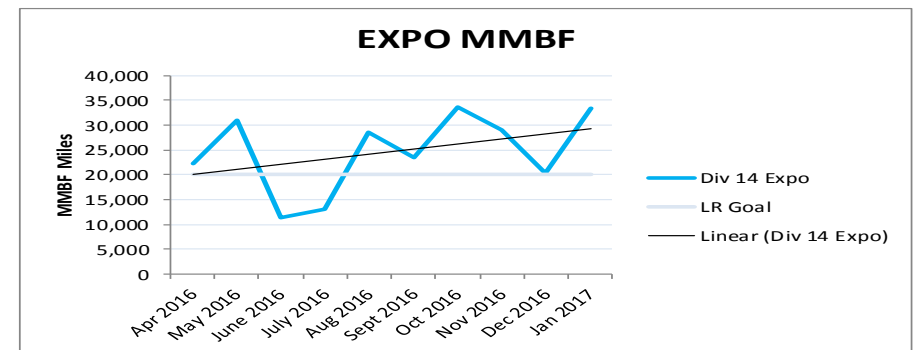
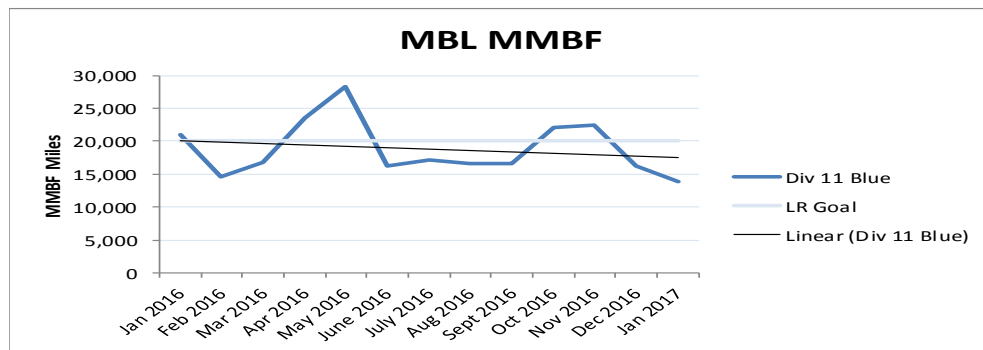
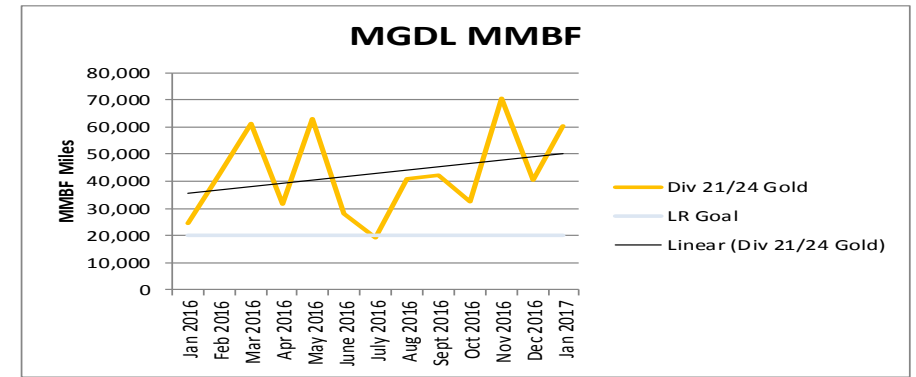


Mean Miles Between Major Failures (all)



MMBF by Division January 2016-2017

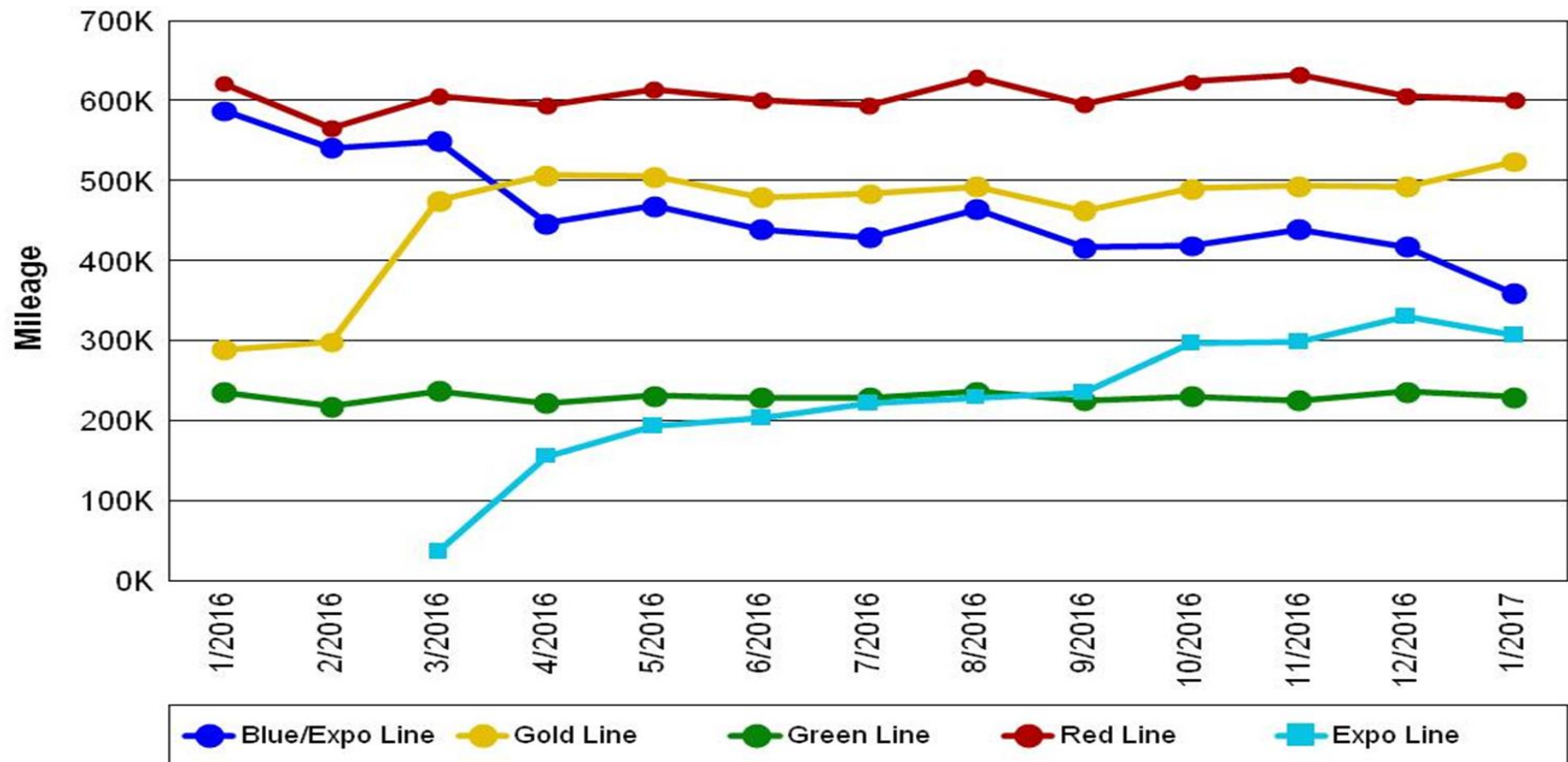
Month	Div 11 Blue	Div 20 Red/Purple	Div 22 Green	Div 21/24 Gold	Div 14 Expo	LR Goal	HR Goal
Jan 2016	20,976	310,794	13,075	24,371	-	20,000	35,000
Feb 2016	14,628	62,876	16,751	42,632	-	20,000	35,000
Mar 2016	16,739	86,604	39,513	61,444	-	20,000	35,000
Apr 2016	23,513	84,909	13,853	31,658	22,195	20,000	35,000
May 2016	28,263	43,282	28,871	63,137	31,044	20,000	35,000
June 2016	16,263	120,190	19,031	28,184	11,289	20,000	35,000
July 2016	17,156	84,844	17,567	19,271	13,173	20,000	35,000
Aug 2016	16,586	89,920	21,505	41,079	28,623	20,000	35,000
Sept 2016	16,651	85,121	18,725	42,049	23,505	20,000	35,000
Oct 2016	22,027	309,858	19,184	32,664	33,606	20,000	35,000
Nov 2016	22,473	89,953	17,318	70,436	29,108	20,000	35,000
Dec 2016	16,198	201,913	9,073	40,514	20,258	20,000	35,000
Jan 2017	13,950	155,755	14,888	60,522	33,309	20,000	35,000



Mileage Between Data Range (by month)

January 2016-2017

Rail Division Monthly Mileage



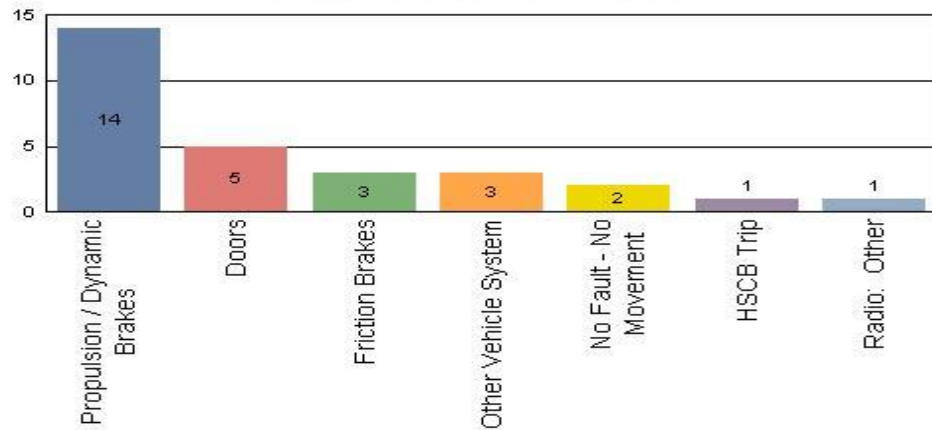
Notes:

- ❖ Gold Line increase in mileage is due to the open of the Foothill extension, which includes stations further apart and faster average running speeds.
- ❖ With the opening of Division 14 in Santa Monica, the Expo Line mileage is now being reported separately from the Blue Line.

Top Incident Categories January 2017

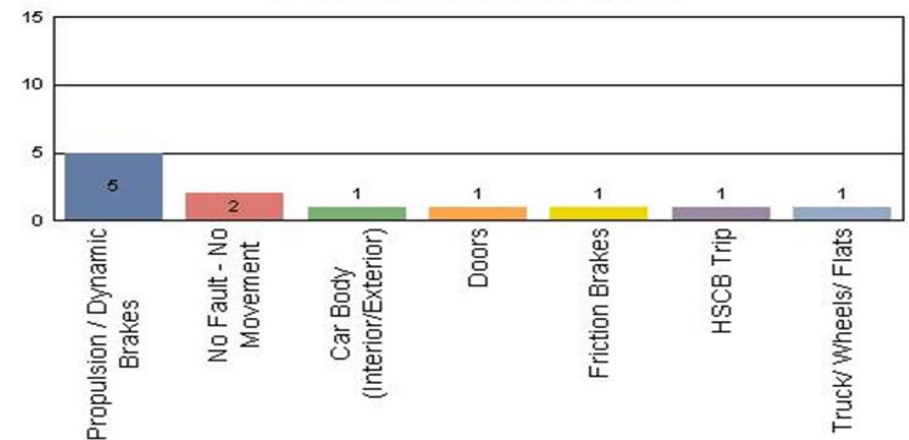
Metro Blue Line (Div 11)

Top Incident Categories



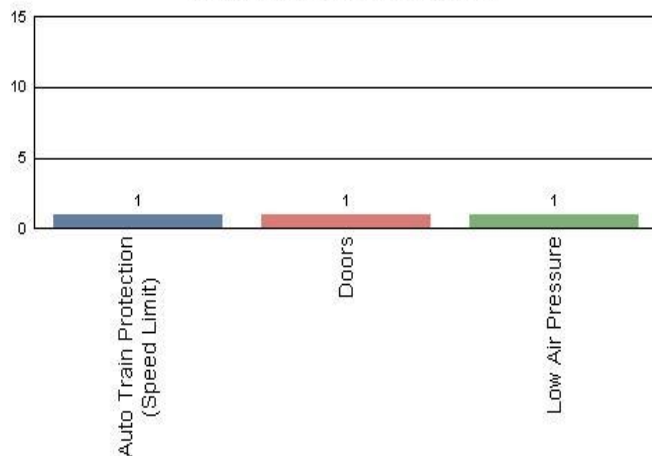
Metro Expo Line (Div 14)

Top Incident Categories



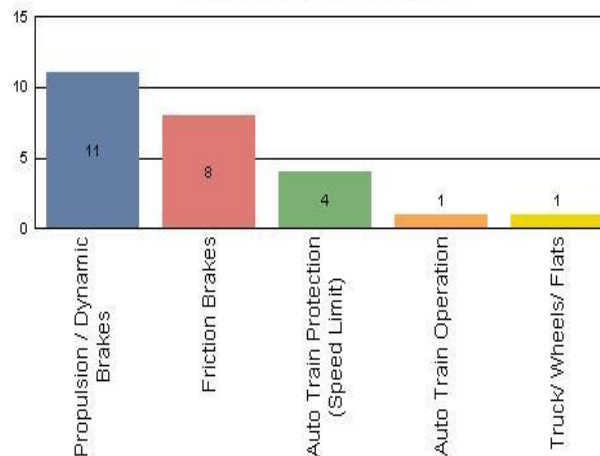
Metro Red/Purple Line (Div 20)

Top Incident Categories



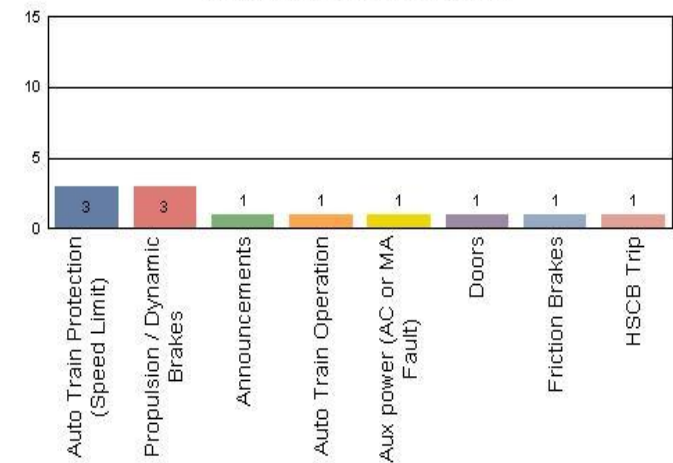
Metro Green Line (Div 22)

Top Incident Categories



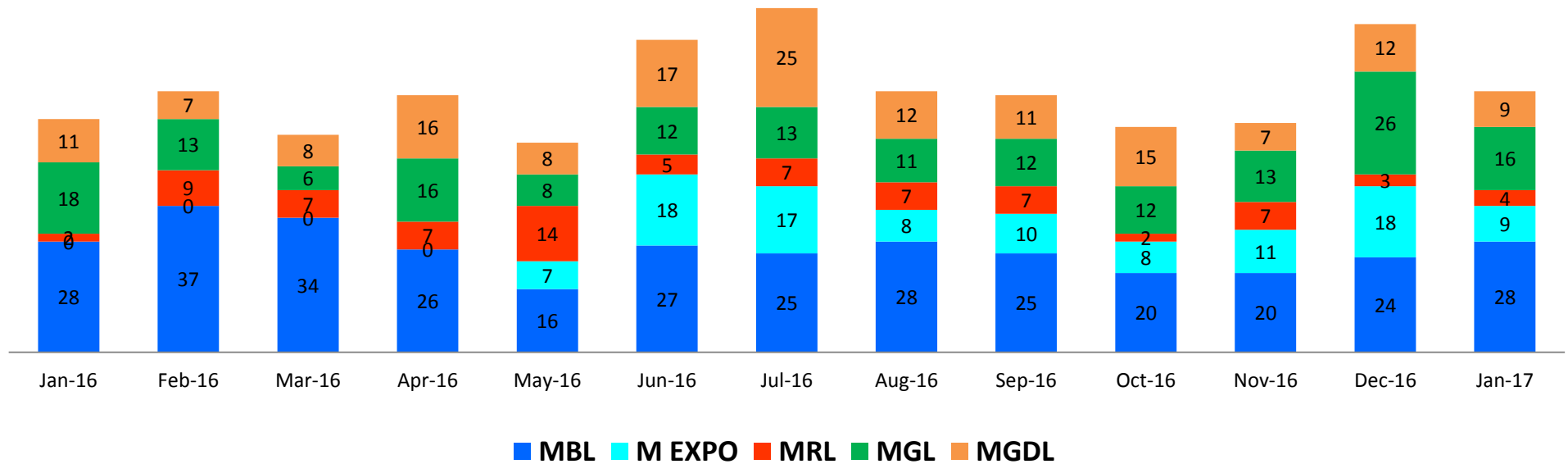
Metro Gold Line (Div 21 & Div 24)

Top Incident Categories



Major Incidents January 2016-2017

Numbers of Major System Failures (by Line)



Preventive Maintenance Compliance

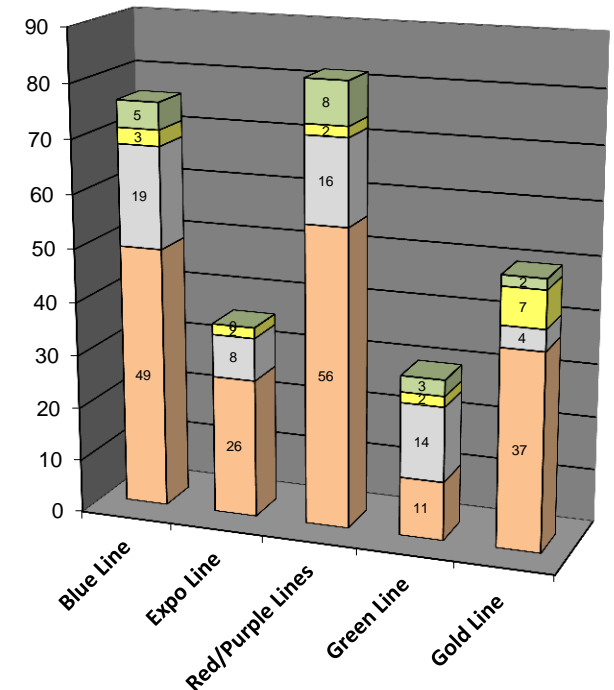
January 2016-2017

PM Compliance	Jan-16	Feb-16	Mar-16	Apr-16	May-16	Jun-16	Jul-16	Aug-16	Sep-16	Oct-16	Nov-16	Dec-16	Jan-17
Blue Line	100%	100%	100%	100%	100%	100%	100%	100%	100%	100%	100%	100%	100%
Expo Line	0%	0%	0%	0%	100%	100%	100%	100%	100%	100%	100%	100%	100%
Red/Purple Lines	100%	100%	100%	100%	100%	100%	100%	100%	100%	100%	100%	100%	100%
Green Line	97%	100%	100%	100%	93%	100%	100%	100%	97%	100%	100%	100%	100%
Gold Line	100%	100%	100%	100%	100%	100%	100%	100%	100%	100%	100%	100%	100%

Number of Preventive Maintenance Inspections - January 2017

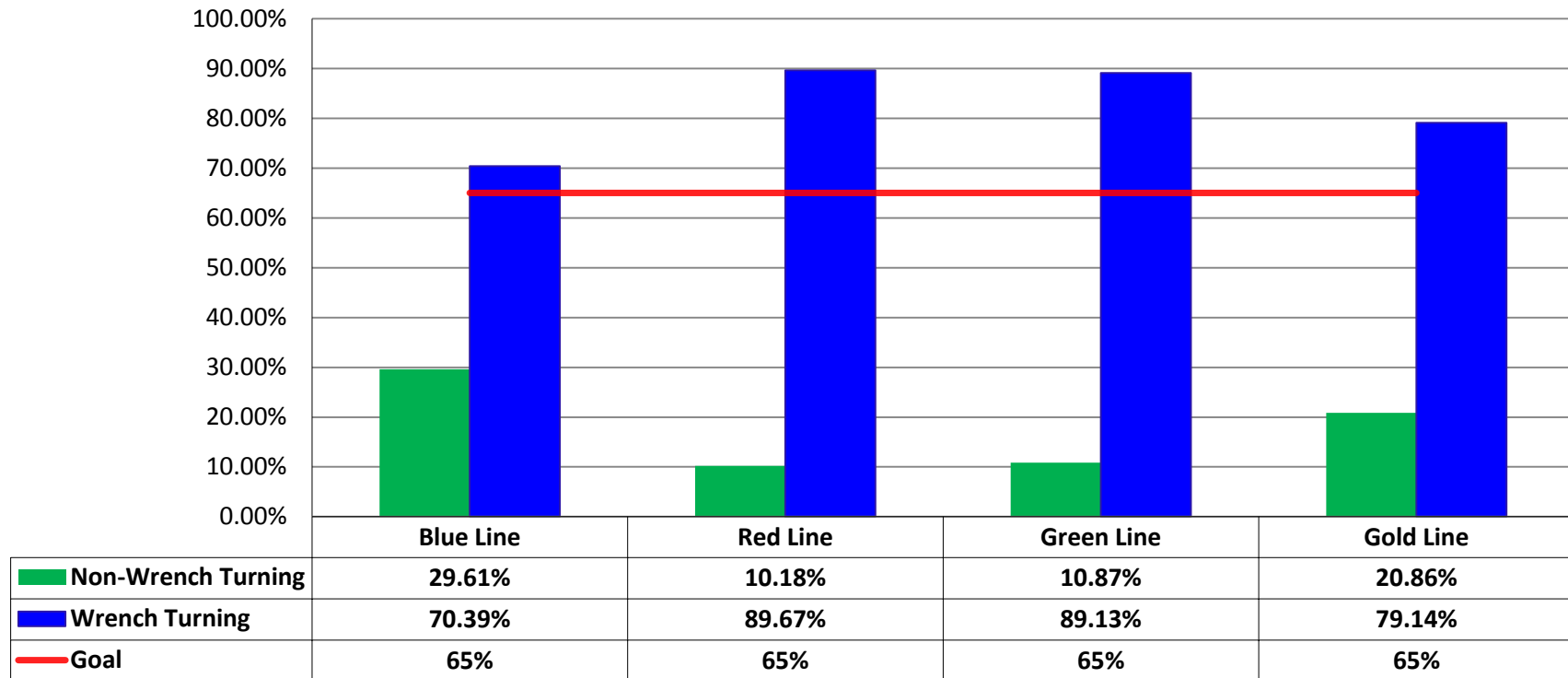
Line	A level	B level	C level	D level	Totals
Blue Line	49	19	3	5	76
Expo Line	26	8	2	0	36
Red/Purple Lines	56	16	2	8	82
Green Line	11	14	2	3	30
Gold Line	37	4	7	2	50
Totals:	179	61	16	18	274

Explanation of PM Inspection levels		Miles			
Line	Type	A level	B level	C level	D level
Blue/Expo Lines	P865/P2020	5,000	15,000	30,000	60,000
Blue/Expo Lines	P2000	7,500	22,500	45,000	90,000
Red/Purple Lines	A650	7,500	22,500	45,000	90,000
Green Line	P2000	7,500	22,500	45,000	90,000
Gold Line	P2550	10,000	30,000	60,000	120,000
Gold/Expo Lines	P3010	10,000	30,000	60,000	120,000



RFS Leader Wrench Turning January 2017

RFS - Leader Wrench Turning January 2017



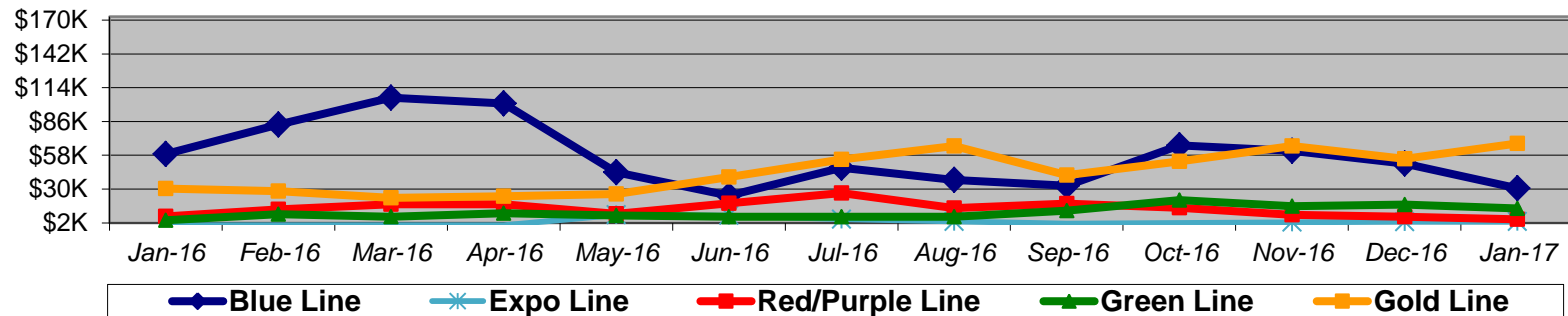
Notes: Labor hours contributed by Maint Specialist Leader, Rail Body/Paint Repair Leader, and Maint Specialist Temporary Leader

Vandalism & Graffiti Report

January 2016-2017

Graffiti Costs

	Jan-16	Feb-16	Mar-16	Apr-16	May-16	Jun-16	Jul-16	Aug-16	Sep-16	Oct-16	Nov-16	Dec-16	Jan-17	13-Month Period
Blue Line	\$59K	\$83K	\$106K	\$101K	\$44K	\$24K	\$48K	\$38K	\$33K	\$66K	\$62K	\$51K	\$31K	\$745K
Expo Line	\$K	\$K	\$K	\$K	\$9K	\$8K	\$5K	\$3K	\$2K	\$2K	\$2K	\$3K	\$3K	\$37K
Red/Purple Line	\$7K	\$13K	\$17K	\$17K	\$9K	\$18K	\$27K	\$14K	\$18K	\$14K	\$9K	\$7K	\$5K	\$177K
Green Line	\$4K	\$9K	\$7K	\$10K	\$8K	\$7K	\$7K	\$7K	\$12K	\$21K	\$16K	\$17K	\$14K	\$141K
Gold Line	\$30K	\$28K	\$23K	\$24K	\$26K	\$40K	\$54K	\$66K	\$42K	\$53K	\$66K	\$55K	\$68K	\$575K
Totals:	\$101K	\$134K	\$153K	\$153K	\$96K	\$98K	\$141K	\$128K	\$106K	\$157K	\$154K	\$133K	\$121K	\$1,675K



January 2017 Vandalism & Graffiti - All Rail				
	Qty	Labor	Materials	Totals
Windows Replaced	42	\$ 7,416	\$ 17,200	\$ 24,616
Vandal Shields Replaced	478	\$ 14,712	\$ 7,823	\$ 22,535
Seats Cleaned	173	\$ 905	\$ 40	\$ 945
Seats Inserts Replaced	205	\$ 12,403	\$ 5,685	\$ 18,088
Graffiti Removal - Other	1,551	\$ 36,785	\$ 8,868	\$ 45,653
Repainting Panels	279	\$ 8,789	\$ -	\$ 8,789
Totals	2,728	\$ 81,010	\$ 39,616	\$ 120,626

Vandalism & Graffiti Pictures

January 2017

Blue Line

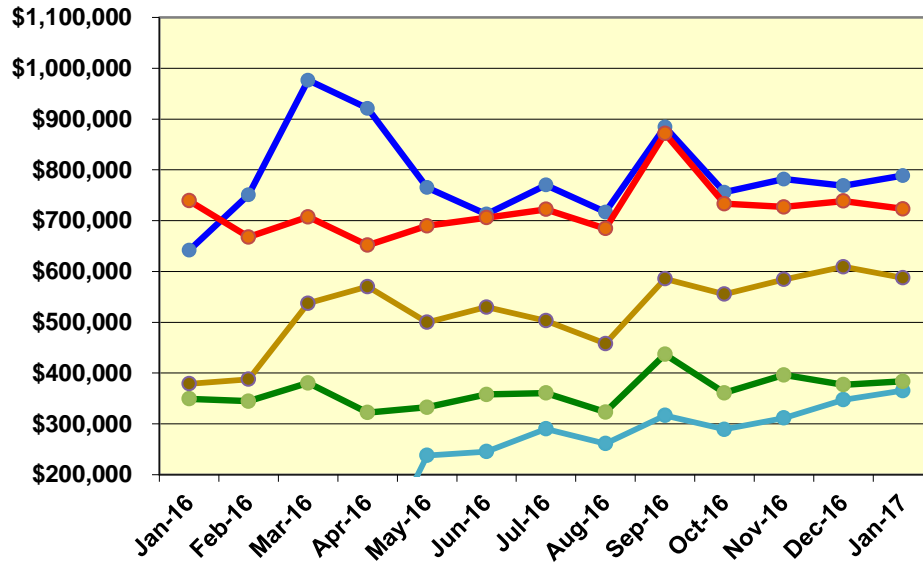


Green Line

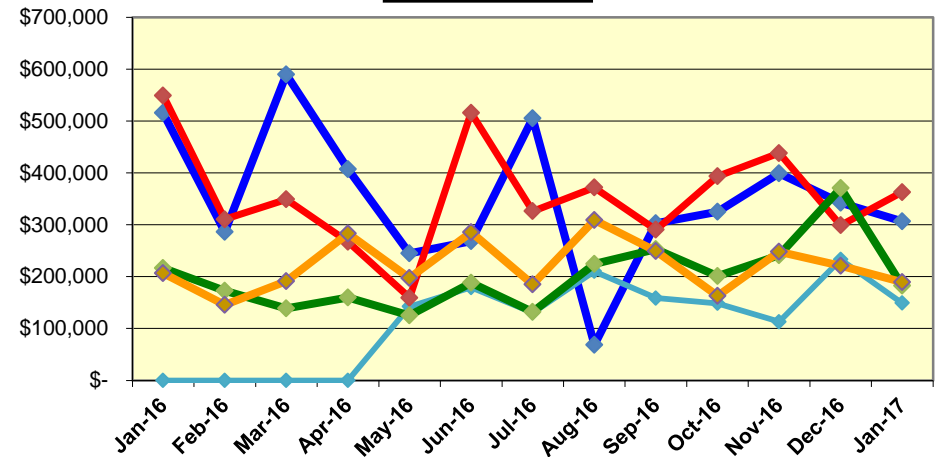


Labor and Material Costs January 2016-2017

Labor Costs



Material Costs



	Jan-16	Feb-16	Mar-16	Apr-16	May-16	Jun-16	Jul-16	Aug-16	Sep-16	Oct-16	Nov-16	Dec-16	Jan-17
Labor Costs													
Blue Line	\$ 641,613	\$ 750,961	\$ 976,568	\$ 920,945	\$ 765,108	\$ 712,774	\$ 770,143	\$ 716,923	\$ 884,555	\$ 755,958	\$ 781,662	\$ 768,756	\$ 788,785
Expo Line	\$ -	\$ -	\$ -	\$ -	\$ 237,630	\$ 245,339	\$ 290,199	\$ 261,217	\$ 316,395	\$ 289,213	\$ 311,627	\$ 347,280	\$ 365,354
Red/Purple Lines	\$ 739,336	\$ 667,772	\$ 707,560	\$ 651,771	\$ 689,764	\$ 705,772	\$ 722,363	\$ 684,555	\$ 871,431	\$ 733,202	\$ 727,093	\$ 738,672	\$ 723,038
Green Line	\$ 349,152	\$ 344,701	\$ 380,356	\$ 322,108	\$ 332,662	\$ 357,807	\$ 360,682	\$ 323,087	\$ 436,825	\$ 360,963	\$ 396,278	\$ 376,933	\$ 383,591
Gold Line	\$ 378,751	\$ 387,820	\$ 537,337	\$ 570,186	\$ 499,874	\$ 529,761	\$ 502,967	\$ 458,067	\$ 585,582	\$ 555,213	\$ 584,203	\$ 609,215	\$ 587,313
Totals	\$ 2,108,852	\$ 2,151,255	\$ 2,601,822	\$ 2,465,011	\$ 2,525,038	\$ 2,551,454	\$ 2,646,353	\$ 2,443,849	\$ 3,094,789	\$ 2,694,548	\$ 2,800,863	\$ 2,840,856	\$ 2,848,080

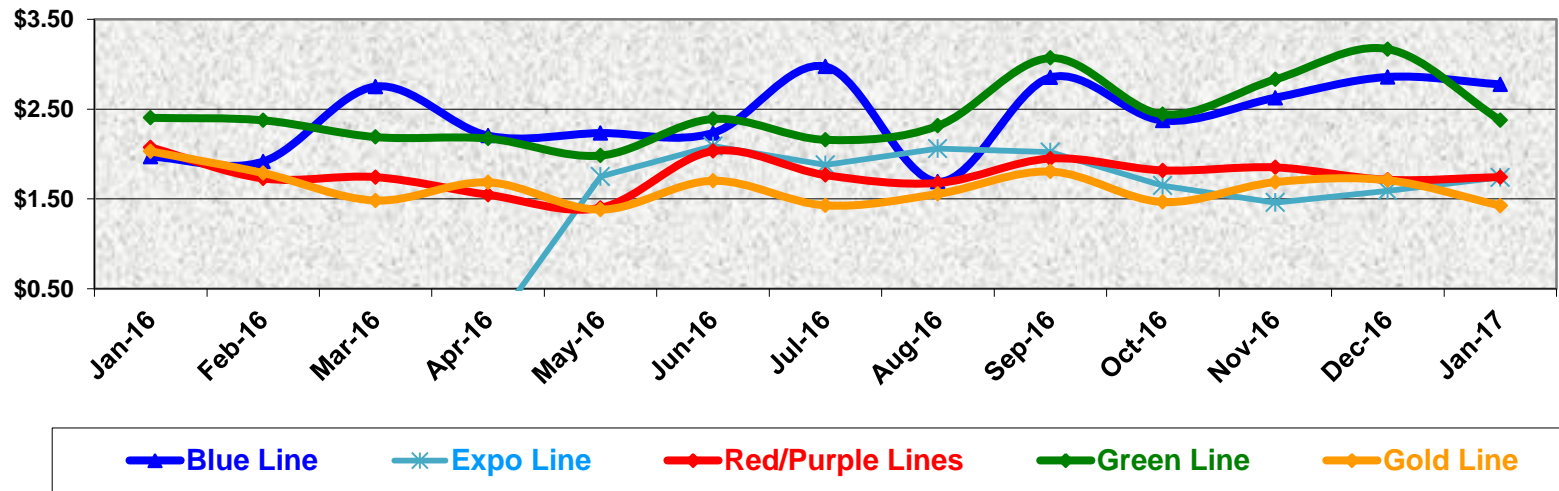
	Jan-16	Feb-16	Mar-16	Apr-16	May-16	Jun-16	Jul-16	Aug-16	Sep-16	Oct-16	Nov-16	Dec-16	Jan-17
Material Costs													
Blue Line	\$ 515,933	\$ 286,531	\$ 589,879	\$ 407,085	\$ 245,001	\$ 268,750	\$ 505,721	\$ 68,670	\$ 303,202	\$ 324,999	\$ 399,427	\$ 342,695	\$ 306,710
Expo Line	\$ -	\$ -	\$ -	\$ -	\$ 142,495	\$ 179,099	\$ 130,419	\$ 210,312	\$ 158,666	\$ 148,670	\$ 113,229	\$ 233,001	\$ 149,260
Red/Purple Lines	\$ 549,576	\$ 310,489	\$ 349,093	\$ 267,284	\$ 159,258	\$ 515,978	\$ 326,251	\$ 371,920	\$ 290,597	\$ 393,507	\$ 438,480	\$ 299,157	\$ 363,192
Green Line	\$ 216,535	\$ 172,625	\$ 138,673	\$ 159,615	\$ 125,334	\$ 188,111	\$ 132,247	\$ 224,414	\$ 252,988	\$ 201,438	\$ 241,344	\$ 370,755	\$ 182,518
Gold Line	\$ 206,856	\$ 145,891	\$ 191,351	\$ 283,211	\$ 197,620	\$ 285,877	\$ 185,153	\$ 308,906	\$ 249,398	\$ 162,899	\$ 247,842	\$ 221,172	\$ 189,520
Totals	\$ 1,488,899	\$ 915,536	\$ 1,268,996	\$ 1,117,195	\$ 869,708	\$ 1,437,815	\$ 1,279,791	\$ 1,184,222	\$ 1,254,851	\$ 1,231,513	\$ 1,440,322	\$ 1,466,779	\$ 1,191,200

Cost Per Mile

January 2016-2017

Cost per mile:	Jan-16	Feb-16	Mar-16	Apr-16	May-16	Jun-16	Jul-16	Aug-16	Sep-16	Oct-16	Nov-16	Dec-16	Jan-17	Average
Blue Line	\$1.97	\$1.92	\$2.75	\$2.21	\$2.23	\$2.24	\$2.97	\$1.69	\$2.85	\$2.37	\$2.63	\$2.86	\$2.78	\$2.42
Expo Line	\$0.00	\$0.00	\$0.00	\$0.00	\$1.75	\$2.09	\$1.88	\$2.06	\$2.02	\$1.65	\$1.46	\$1.59	\$1.74	\$1.80
Red/Purple Lines	\$2.07	\$1.73	\$1.74	\$1.55	\$1.40	\$2.03	\$1.77	\$1.68	\$1.95	\$1.82	\$1.85	\$1.71	\$1.74	\$1.77
Green Line	\$2.40	\$2.38	\$2.19	\$2.17	\$1.98	\$2.39	\$2.16	\$2.31	\$3.07	\$2.44	\$2.83	\$3.17	\$2.38	\$2.45
Gold Line	\$2.03	\$1.79	\$1.48	\$1.68	\$1.38	\$1.70	\$1.43	\$1.56	\$1.81	\$1.47	\$1.69	\$1.71	\$1.43	\$1.63

Cost per Mile



ATU Absences vs. Overtime

January 2017

ABSENCE TYPE and HOURS	3941 Blue	3947 Expo	3942 Red	3943 Green	3944 Gold	3948 Monrovia	Total
AWP-ABSENT W/O PERMISSION	-	-	-	40	-	-	40
BER-BEREAVEMENT	24	40	24	-	-	48	136
CTO-COMPENSATORY TIME OFF	182	195	418	148	8	140	1,091
CUT-EMPLOYEE LEAVES EARLY	0	7	2	1	-	-	10
DSL-DISABILITY LEAVE/LONG	848	-	120	45	-	-	1,013
EFH-EMG. FLOAT HOL.	-	40	56	32	24	24	176
ETO-EXCUSED TIME OFF	80	54	43	12	1	22	210
FMI-FAM IND INJURY	168	-	-	152	160	-	480
FML-FAMILY CARE LEAVE	152	239	140	160	-	168	859
FMS-FAMILY LEAVE SICK	50	76	4	16	-	-	145
HLF-HOLIDAY FLOATING	192	88	264	72	16	136	768
HNP-HOLIDAY NOT PAID	-	-	8	-	-	-	8
HOL-HOLIDAY LEGAL	496	144	536	88	8	160	1,432
II-INDUSTRIAL INJURY	-	-	-	176	-	-	176
IS-INVESTIGATIVE SUSPENSION	-	-	-	-	-	2	2
JUR-JURY DUTY	16	-	16	-	-	-	32
LC1-LABOR CODE 233	276	136	334	120	104	308	1,278
LTI-OCCPIL/LONGTRM INJ LEAVE	176	-	712	-	-	-	888
MLN-MILITARY ABSENCE-UNPAID	-	-	8	-	-	-	8
OWP-OFF WITH PERMISSION	32	7	3	-	-	0	42
RTO-REQUESTED TIME OFF-NO PAY	72	16	-	18	-	1	106
SCK-SICK PAY	168	104	316	219	80	176	1,063
SCW-SICK WITHOUT PAY	96	-	16	20	-	24	156
TAR-TARDY	1	1	1	2	0	0	5
VAC-VACATION	927	402	1,090	428	232	462	3,541
VAS-VACATION WHILE SICK	-	-	14	-	-	-	14
*TRAINING	48	280	-	64	-	16	408
Total Absence Hours	4,004	1,828	4,122	1,812	633	1,686	14,085
**ATU Number of Work Force (active)	104	42	102	42	17	61	368
Full Work Force hours/month	18,023	7,279	17,677	7,279	2,946	10,573	63,774
Absence as a % of Work Force	22%	25%	23%	25%	21%	16%	22%

OVERTIME TYPE and HOURS	3941 Blue	3947 Expo	3942 Red	3943 Green	3944 Gold	3948 Monrovia	Total
CTB-COMPENSATORY TIME TO BANK	76	101	210	75	12	104	578
OTP-PREM OVERTIME	3,960	1,514	3,658	1,629	23	1,040	11,824
PHP-PHYSICAL EXAM OT	1	-	-	-	-	-	1
WLO-Worked Lunch Overtime	156	164	219	80	32	67	717
Total Overtime Hours	4,192	1,779	4,087	1,784	66	1,211	13,119
Overtime as a % of Work Force	23%	24%	23%	25%	2%	11%	21%

*Training hours captured by Instruction Department are added to Absences Report.

**ATU Employee Numbers from ATU Manpower Status Report (last week of the month)



Metro

Note: Overtime also covers other required activities, including Training, Component Overhaul, and Special Events.

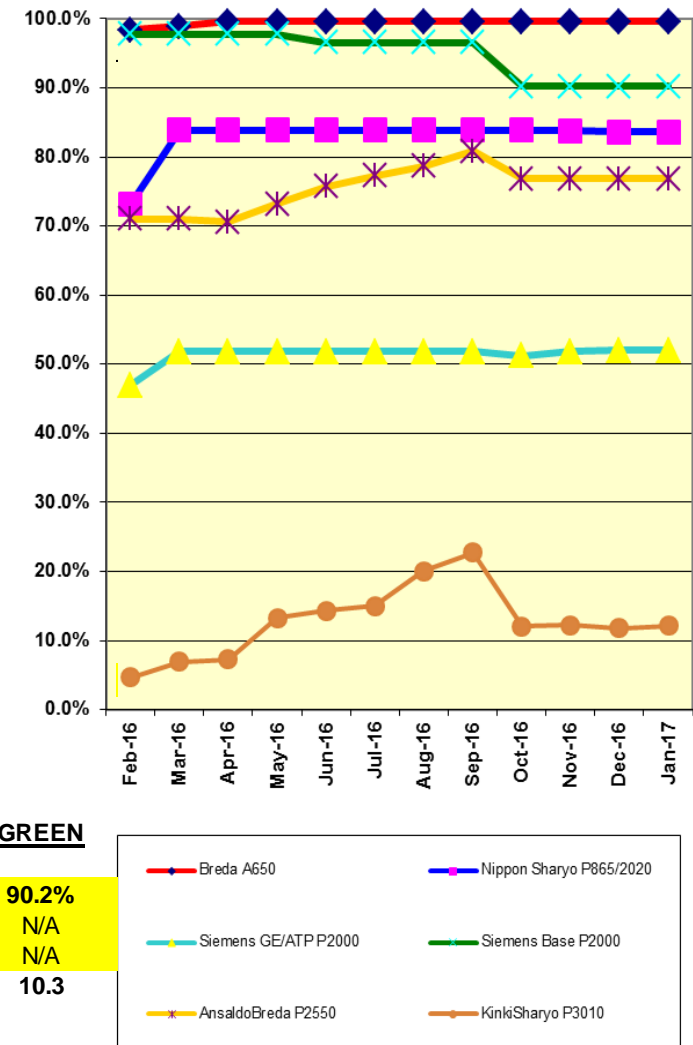
RFS Instruction Department Activities January 2017

LRV Training classes completed during the month of January 2017

Description	Course Hours	Student Count	Training Hours
<u>Blue Line Training - (P865/2020 & P2000 LRVs):</u> RFS KINKISHARYO INTRO & MAINLINE RESPONSE	16	3	48
Total Blue Line Training (Hours):			48
<u>Light Rail Training [In Monrovia (P2550 LRVs) JAC]:</u> RFS 2015-FRHT-BRANDT HIGH-RAIL TRUCK	8	2	16
Total Light Rail Training (Hours):			16
<u>Expo Line Training - (P865/2020, P2000, & P3010 LRVs):</u> RFS KINKISHARYO VEHICLE SYSTEMS RFS HEGENSCHIEDT WHEEL TRUE - 14	40 40	4 3	160 120
Total Expo Line Training (Hours):			280
<u>Gold Line Training (P2550 LRVs):</u> No vehicle training ths month			0
Total Gold Line Training (Hours):			0
<u>Green Line Training (P2000 LRVs):</u> RFS SIEMENS 2000 VEHICLE SYSTEMS	32	2	64
Total Green Line Training (Hours):			64
<u>Total RFS Instruction for the month of January 2017 (Hours):</u>			408

<u>Core Vehicle Training Completed:</u>	<u>BLUE</u>	<u>EXPO</u>	<u>GOLD</u>	<u>GREEN</u>
Percentage of core vehicle training complete:	83.6%	21.3%	76.9%	90.2%
Siemens P2000 training complete:	52.0%	39.8%	N/A	N/A
KinkiSharyo P3010 training complete:	0.5%	17.0%	23.9%	N/A
Average Specialist Rail Experience Level in Years:	15.3	3.4	7.2	10.3

Core Training Completed



Variations caused by new hires, employee transfers,
& training completed

RFS Instruction Department Activities

January 2017

HRV & Other Training classes completed during the month of January 2017

<u>Description</u>	<u>Course Hours</u>	<u>Student Count</u>	<u>Training Hours</u>
Red Line Training - Breda A650 HRV:			
NO VEHICLE TRAINING THIS MONTH	0	0	0
Total Red Line Training Hours			0

<u>Other Instruction Activities</u>	<u>Curriculum</u>	<u>Administrative</u>	<u>Technical Support</u>	<u>Total</u>
A650 Curriculum, Administrative, and Technical Support	32	16	64	112
P865/P2020 Curriculum, Administrative, and Technical Support	16	8	16	40
P2000 Curriculum, Administrative, and Technical Support	32	8	40	80
P2550 Curriculum, Administrative, and Technical Support	8	16	24	48
P3010 Curriculum, Administrative, and Technical Support	240	24	0	264
Time Off (HOL, TOV, & SCK)				248
Total Other Instruction Activities				792

<u>Core Vehicle Training Completed:</u>	<u>RED</u>	JAC Core	<u>JAC</u>
Percentage of Core Vehicle Training Complete:	99.6%	(P2000)	38.5%
		(P2550)	22.6%
Average Specialist Rail Experience Level in Years:	13.0		0.6