



Rail Fleet Services Monthly Report March 2017

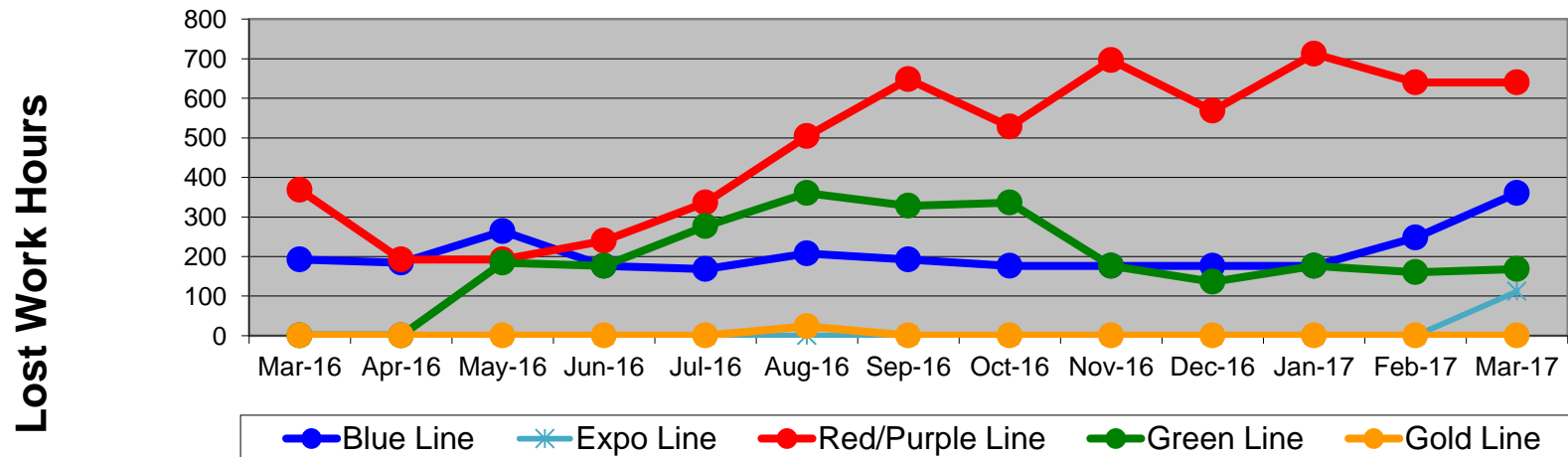
Table of Contents

•	Safety & Cleanliness		
	- Industrial Injuries	Page	3
	- Rail Vehicle Accidents & Major Incidents	Page	4
	- Car Cleanliness	Page	5
•	Customer Service		
	- Service Delivery – AM/PM Pull-Outs	Page	6
	- Vehicle Utilization – Red Line	Page	7
	- Vehicle Utilization – Blue Line & Expo Line	Page	8
	- Vehicle Utilization – Green Line & Gold Line	Page	9
	- All Train Delay Incidents	Page	10
	- Mean Miles Between Failures (Major) & MMBF by Division	Page	11-12
	- Mileage Between Data Range (by month)	Page	13
•	Business Processes		
	- Top Incident Categories	Page	14
	- Major Incidents	Page	15
	- Preventive Maintenance Compliance	Page	16
	- RFS Leader Wrench Turning	Page	17
•	Finance		
	- Vandalism & Graffiti Costs	Page	18
	- Vandalism & Graffiti Pictures	Page	19
	- Labor & Material Costs	Page	20
	- Cost per mile	Page	21
	- Absence vs. Overtime	Page	22
•	Growth		
	- RFS Instruction Department Activities	Page	23-24

Industrial Injuries – Lost Work Hours March 2016-2017

	Mar-16	Apr-16	May-16	Jun-16	Jul-16	Aug-16	Sep-16	Oct-16	Nov-16	Dec-16	Jan-17	Feb-17	Mar-17	13-Month Period
Blue Line	192	184	264	176	168	208	192	176	176	176	176	248	360	2,696
Expo Line	0	0	0	0	0	0	0	0	0	0	0	0	112	112
Red/Purple Line	368	192	192	240	336	504	648	528	696	568	712	640	640	6,264
Green Line	0	0	184	176	277	360	328	336	176	136	176	160	168	2,477
Gold Line	0	0	0	0	0	24	0	0	0	0	0	0	0	24
Totals	560	376	640	592	781	1,096	1,168	1,040	1,048	880	1,064	1,048	1,280	11,573

Industrial Injuries (lost work hours)



Rail Vehicle Accidents & Major Incidents

March 2016-2017

Repair Costs	Mar-16	Apr-16	May-16	Jun-16	Jul-16	Aug-16	Sep-16	Oct-16	Nov-16	Dec-16	Jan-17	Feb-17	Mar-17	13-Month Period
Blue Line	\$2,037	\$1,232	\$513	\$0	\$0	\$3,211	\$665	\$28,089	\$0	\$2,352	\$170,311	\$0	\$1,427	\$209,837
Expo Line	\$0	\$0	\$0	\$0	\$576	\$0	\$12,921	\$9,468	\$0	\$381	\$763	\$1,930	\$0	\$26,039
Red/Purple Line	\$0	\$1,284	\$0	\$1,932	\$840	\$552	\$0	\$0	\$0	\$0	\$0	\$1,032	\$0	\$5,640
Green Line	\$0	\$0	\$0	\$0	\$0	\$51,535	\$0	\$0	\$0	\$0	\$0	\$0	\$0	\$51,535
Gold Line	\$1,487	\$4,646	\$0	\$19,451	\$564	\$0	\$0	\$5,694	\$0	\$0	\$3,789	\$15,829	\$1,871	\$53,331
Totals	\$3,524	\$7,162	\$513	\$21,383	\$1,980	\$55,298	\$13,586	\$43,251	\$0	\$2,733	\$174,863	\$18,791	\$3,298	\$346,382

Rail Vehicle Accident Costs - March 2017				
Date	Incident #	Problem Code	Incident Description	Repair Cost
Metro Blue Line				
3/9/17	2842968	Train vs. Vehicle	A 10-73 was reported at 12th St. and Flower St., NB.	\$ 1,001
3/29/17	2850361	Train vs. Pedestrian	Mirror struck a patron on Compton platform.	\$ 426
			Metro Blue Line Total	\$ 1,427
Metro Gold Line				
3/9/17	2842998	Train vs. Vehicle	A 10-73 was reported at 3rd St. and Wood St., Track 2, SB.	\$ 297
3/14/17	2844944	Train vs. Vehicle	A 10-73 was reported at Temple St., Track 2, SB.	\$ 1,574
			Metro Gold Line Total	\$ 1,871
Metro Green Line				
3/18/17	2846531	Non-Revenue Derailment	Traction Power Hi Rail Vehicle Derailed at Wilmington East Tail Track.	\$ -
			Metro Green Line Total	\$ -
			Grand Total	\$ 3,298
10-71 = Train vs. Object/ 10-72 = Train vs. Pedestrian/ 10-73 = Train vs. Vehicle/ 10-74 = Train vs. MTA Vehicle/ 10-75 = Derailment				

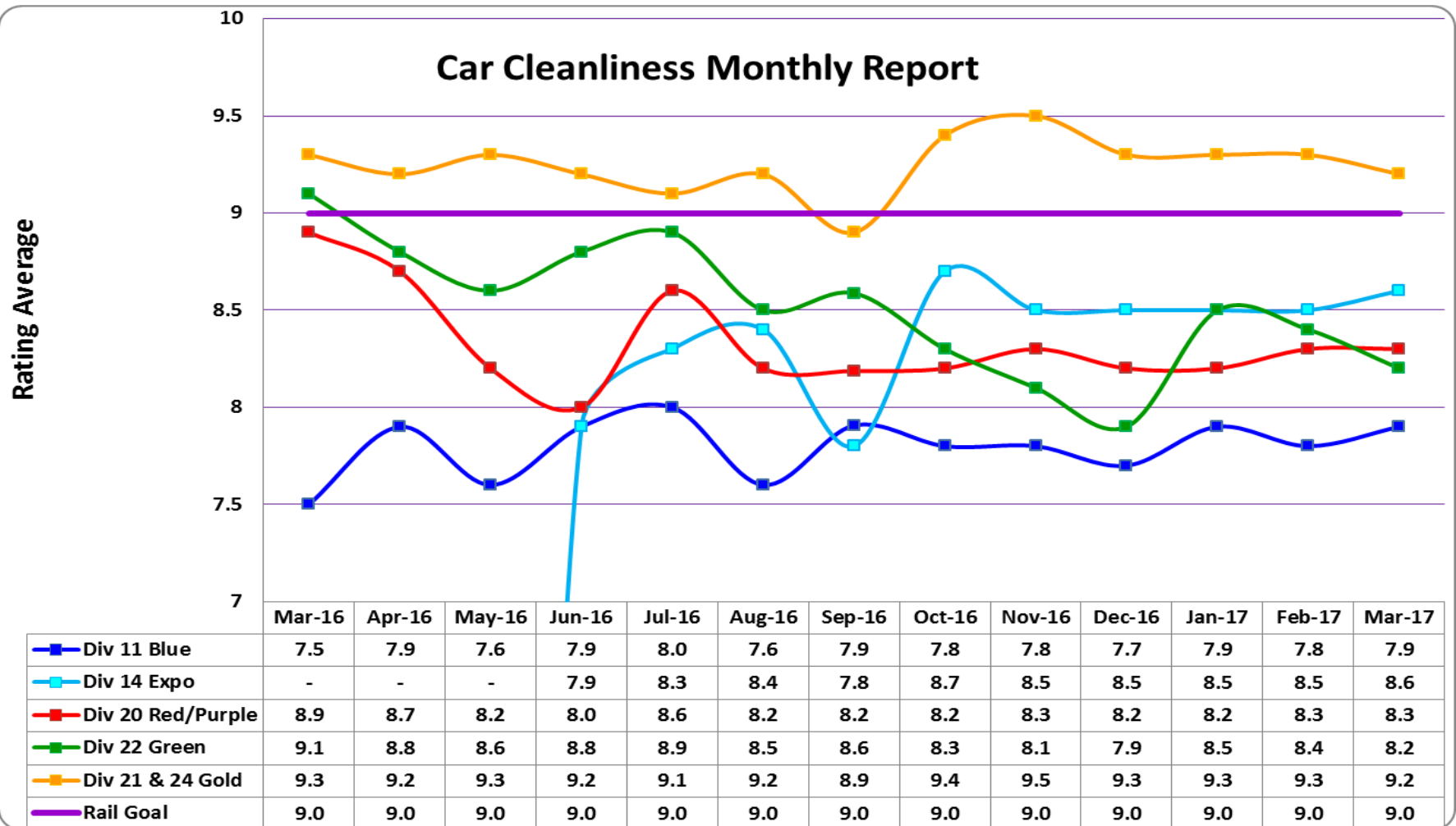


Metro

Note: Repair costs are only the expenses captured during the time period of the report. Actual costs may be significantly higher, if repairs are spread out over several months.

Rail Vehicle – Car Cleanliness

March 2016-2017



Service Delivery March 2017

Blue Line Fleet Size: 71

<u>Pull Out</u>	<u>Vehicles Required</u>	<u>Average Available</u>	<u>% Up (Down)</u>
Weekday:	57	55	96%
Weekend:	26	43	165%

Monthly Mileage: 413,986

Expo Line Fleet Size: 67

<u>Pull Out</u>	<u>Vehicles Required</u>	<u>Average Available</u>	<u>% Up (Down)</u>
Weekday:	47	47	100%
Weekend:	30	46	153%

Monthly Mileage: 328,873

Red/Purple Line Fleet Size: 104

<u>Pull Out</u>	<u>Vehicles Required</u>	<u>Average Available</u>	<u>% Up (Down)</u>
Weekday:	64	78	122%
Weekend:	40	66	165%

Monthly Mileage: 601,880

Green Line Fleet Size: 29

<u>Pull Out</u>	<u>Vehicles Required</u>	<u>Average Available</u>	<u>% Up (Down)</u>
Weekday:	22	22	100%
Weekend:	14	16	114%

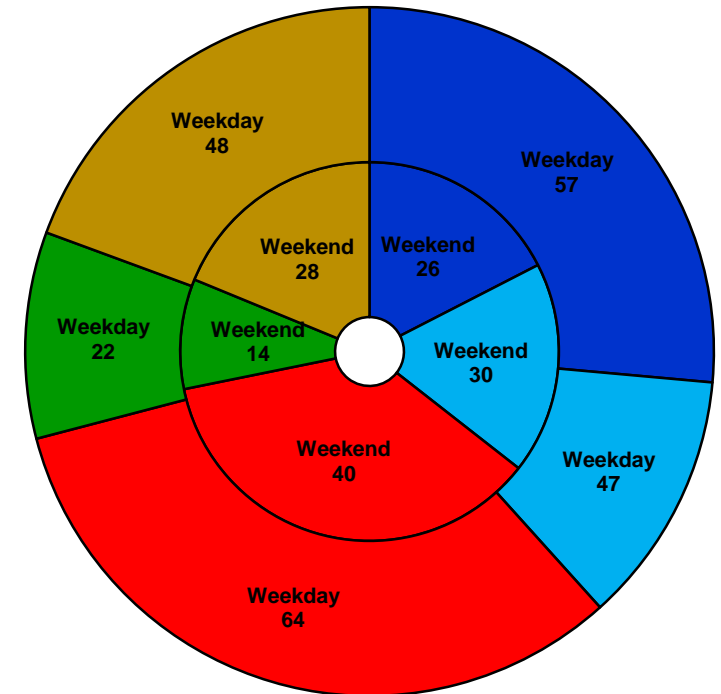
Monthly Mileage: 240,220

Gold Line Fleet Size: 65

<u>Pull Out</u>	<u>Vehicles Required</u>	<u>Average Available</u>	<u>% Up (Down)</u>
Weekday (Div 21):	10	10	100%
Weekday (Div 24):	38	42	111%
Weekend (Div 24):	28	41	146%

***Monthly Mileage: 588,497**

*** Gold Line monthly mileage includes Division 21 and 24.**

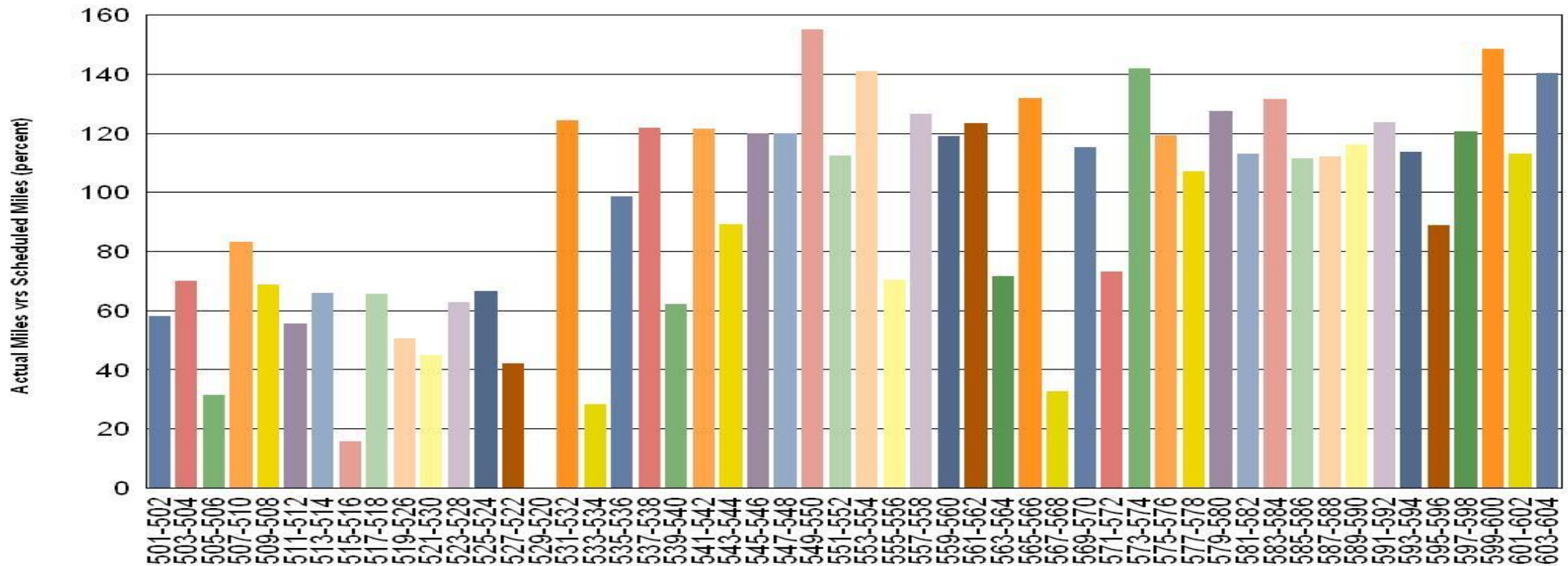


■ Blue Line
 ■ Expo Line
 ■ Red/Purple Line
 ■ Green Line
 ■ Gold Line

NOTES: Standby trains not included in vehicle requirements

Vehicle Utilization March 2017

Metro Red/Purple Line (104 Cars)



Red/Purple Line:

The following cars were out of service due to:

Car # 505-506 – Propulsion Fault

Car # 515-516 – Emergency Brake Application

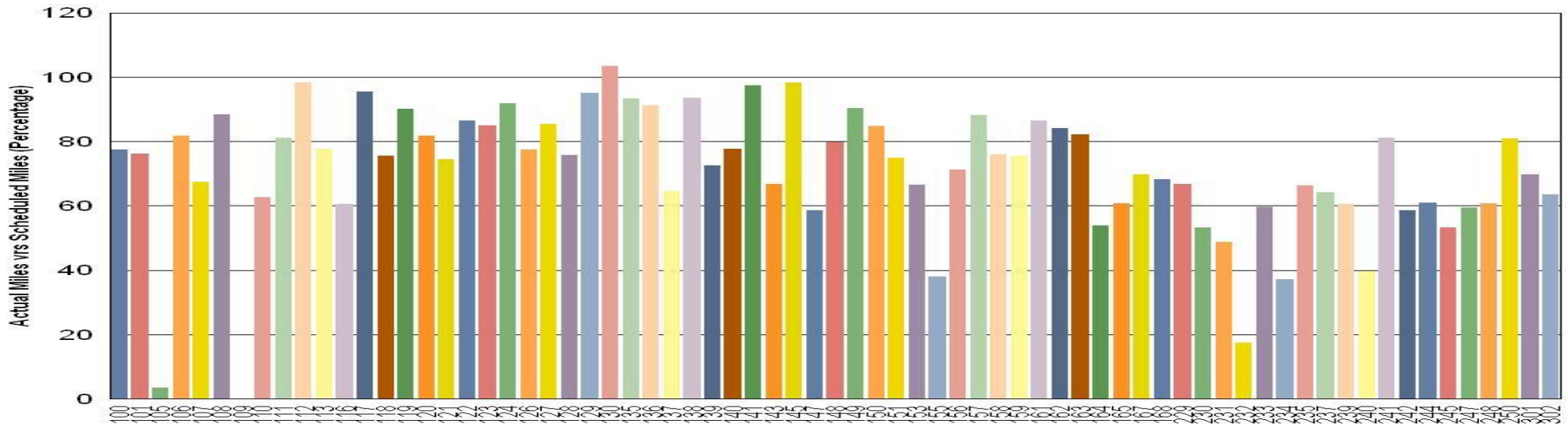
Car # 529-520 – Component Overhaul

Car # 533-534 – Floor and Interior Renovation

Car # 567-568 – Propulsion Shoot Through

Vehicle Utilization March 2017

Metro Blue Line (71 Cars)



Blue Line: The following cars were out of service due to:

- Car # 105 – Decommissioned from Service
- Car # 109 – Derailment Damage Repair
- Car # 155 – Component Overhaul
- Car # 232 – Exterior Painting
- Car # 234 – Inverter/Exterior Painting

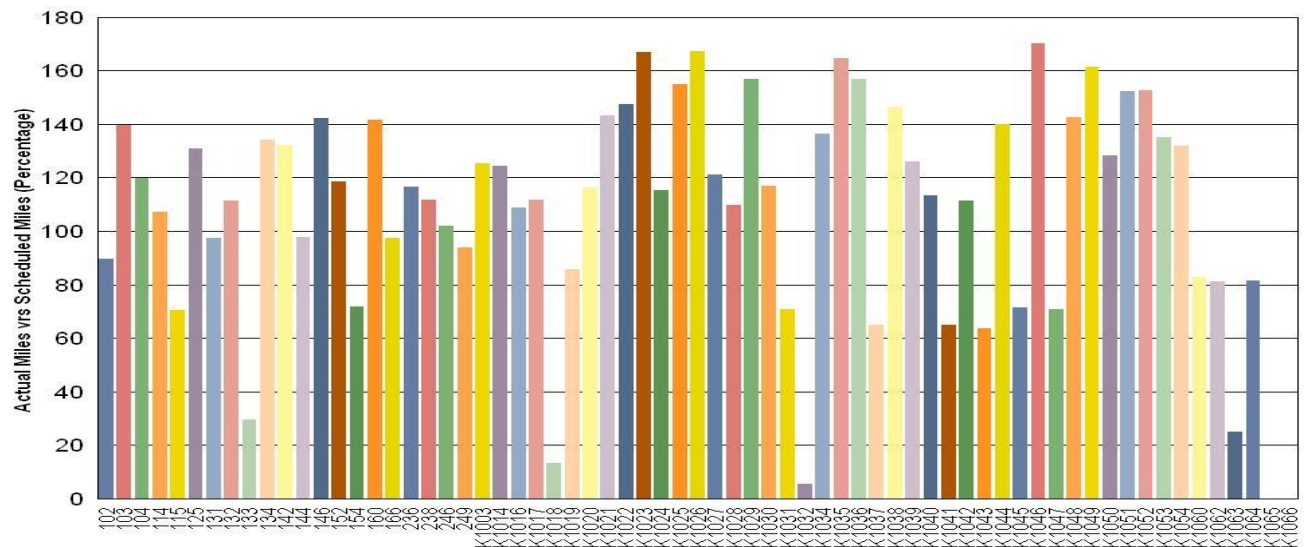
Expo Line: The following cars were out of service due to:

- Car # 133 – Propulsion and Doors Issues
- Car # K1018 – Side & Ceiling Panels, Flip Seats
- Car # K1032 – Newly Accepted 3/23/17
- Car # K1063 – Newly Accepted 3/09/17
- Car # K1065 – Newly Accepted 3/29/17
- Car # K1066 – Newly Accepted 3/29/17



Metro

Metro Expo Line (67 Cars)



Note: Percentage includes an average 4% mileage deduction for yard mileage and vehicle testing.

Vehicle Utilization

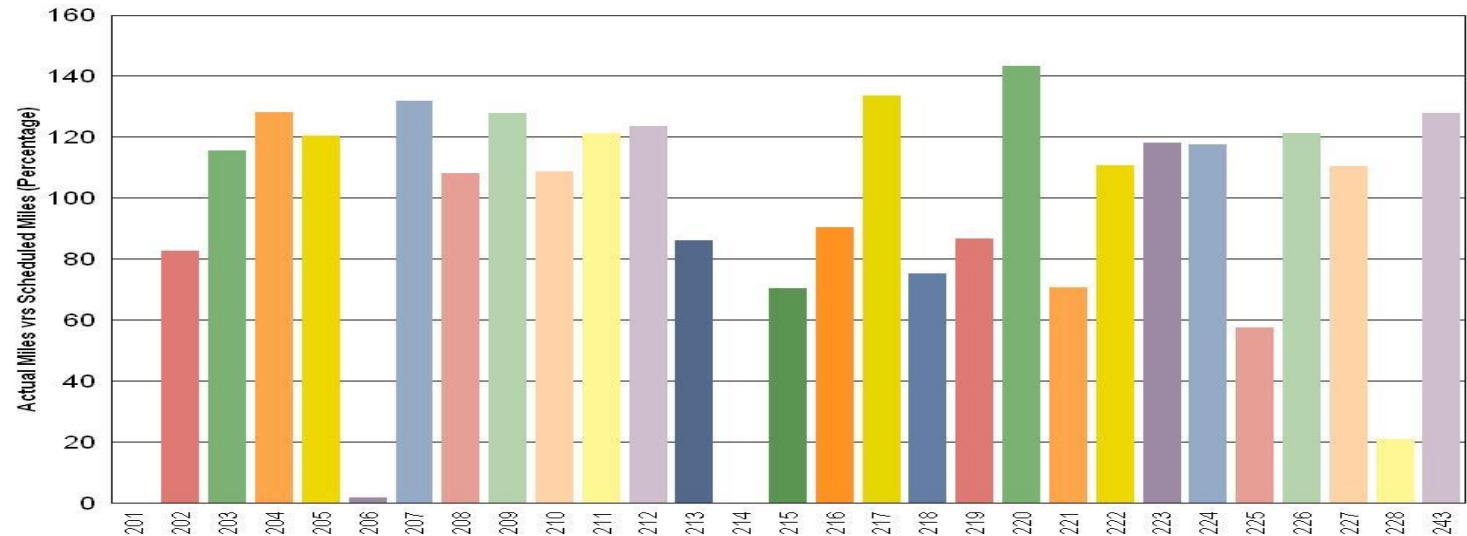
March 2017

Metro Green Line (29 Cars)

Green Line:

The following cars were out of service due to:

- Car # 201** – EMI Fault
- Car # 206** – EMI Fault
- Car # 214** – EMI Fault
- Car # 228** – EMI Fault

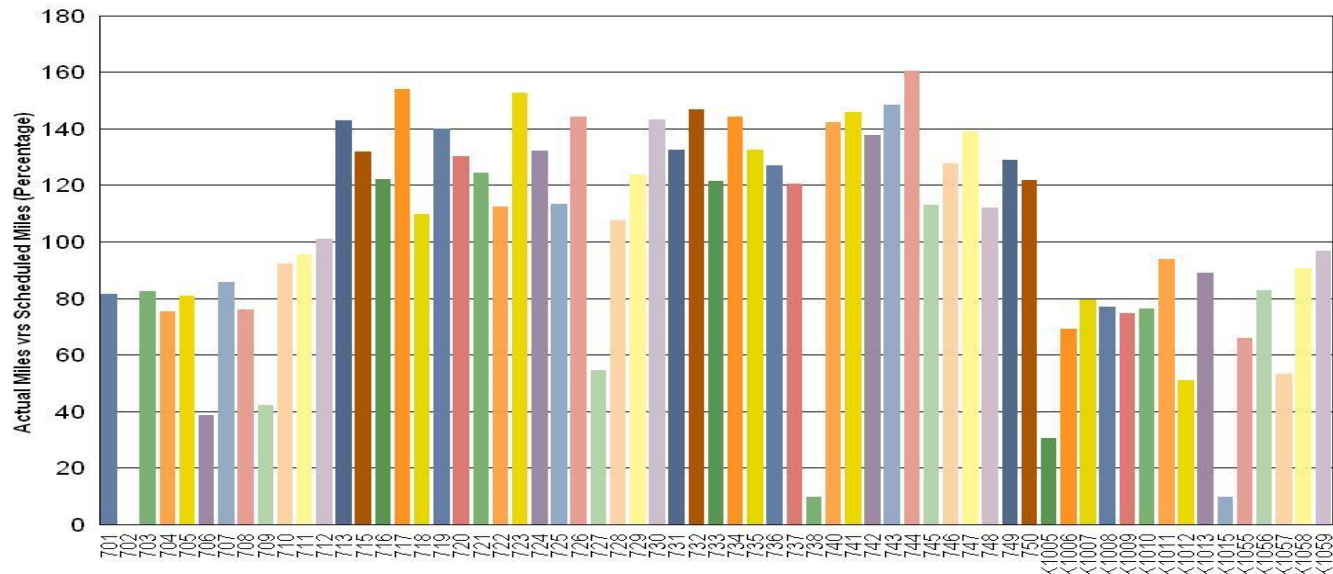


Metro Gold Line (65 Cars)

Gold Line:

The following cars were out of service due to:

- Car # 702** – Accident Repair
- Car # 706** – Auxiliary Inverter Grounding Problem
- Car # 738** – Accident Repair
- Car # K1005** – 60,000-mile PM Inspection
- Car # K1015** – Warranty Repairs (Door Problem)

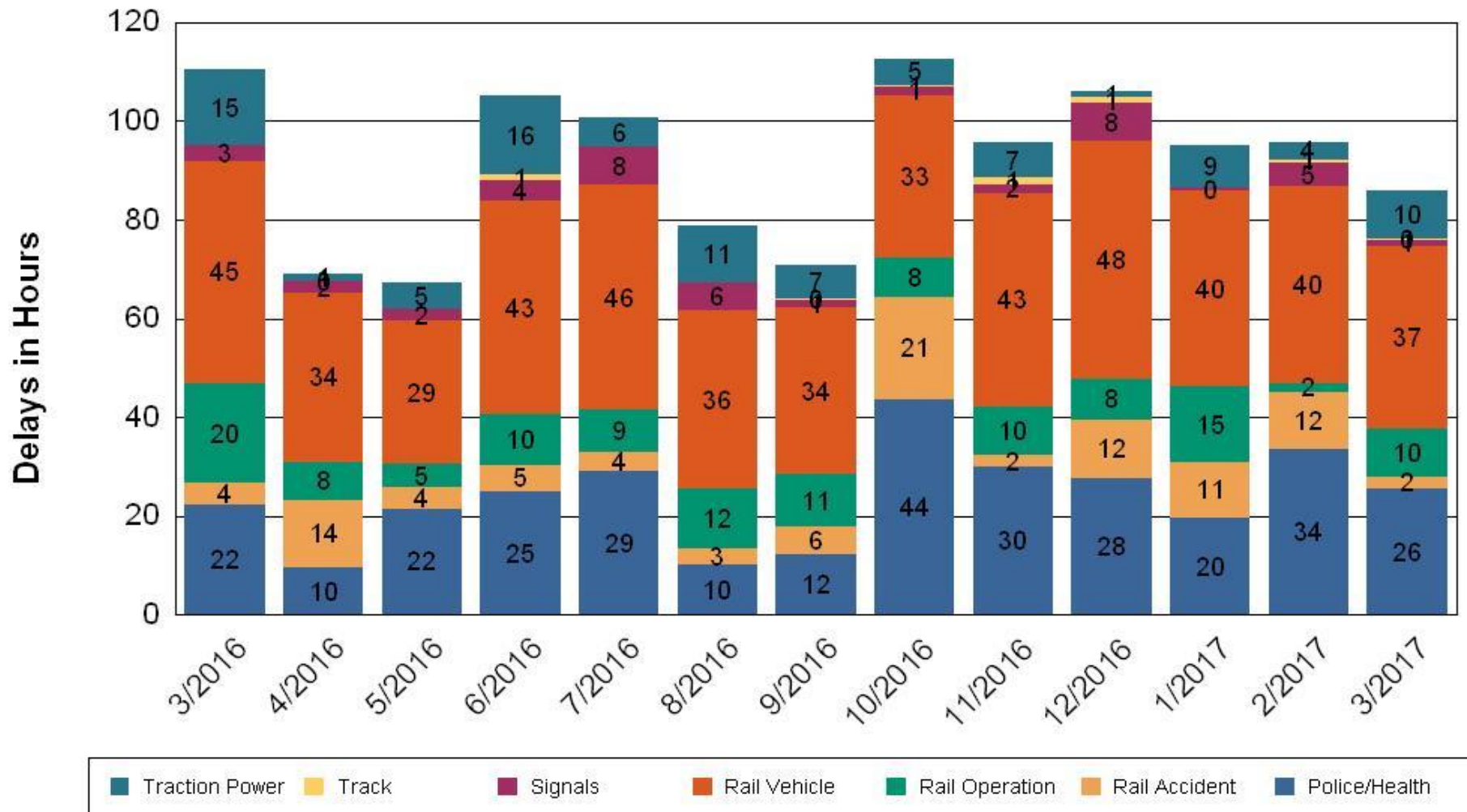


•Percentage includes an average 4% mileage deduction for yard mileage and vehicle testing.

All Train Delays (Hours) March 2016-2017

All Train Delays

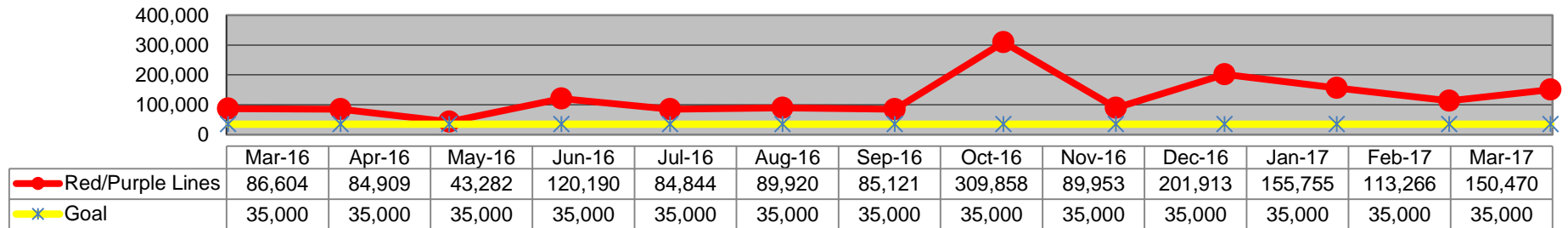
Totals Include the delay to all trains involved (not just the primary incident)



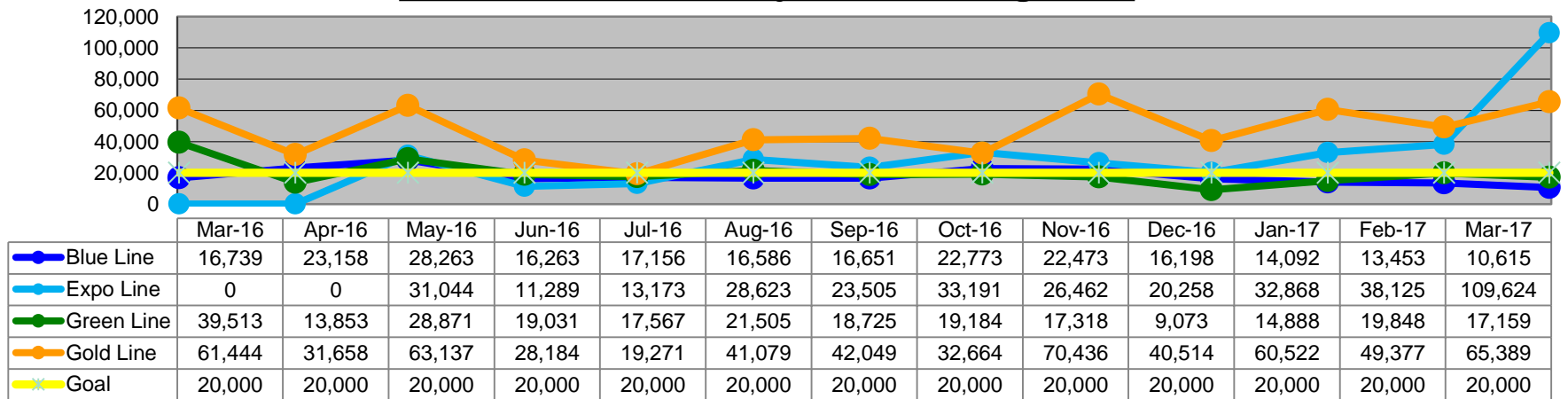
Mean Miles Between Major Failures (MMBF)

March 2016-2017

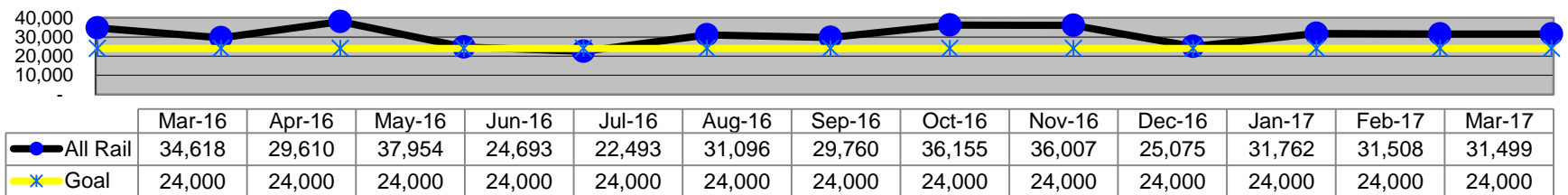
Mean Miles Between Major Failures - Heavy Rail



Mean Miles Between Major Failures - Light Rail



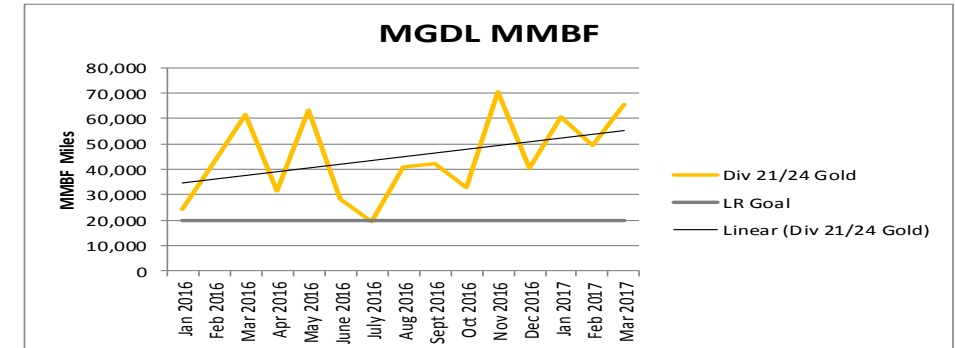
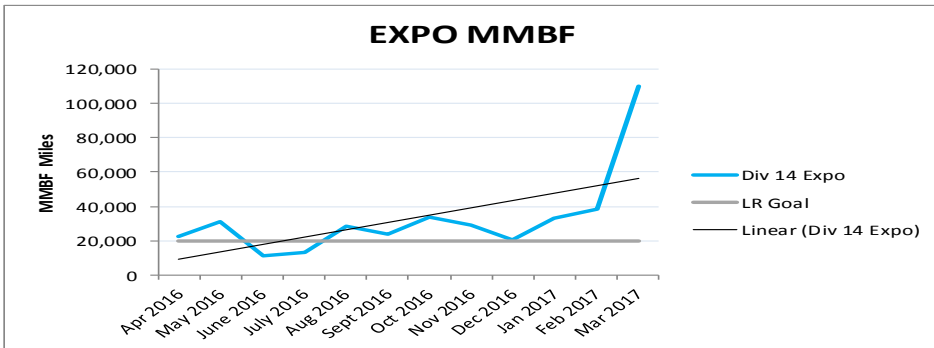
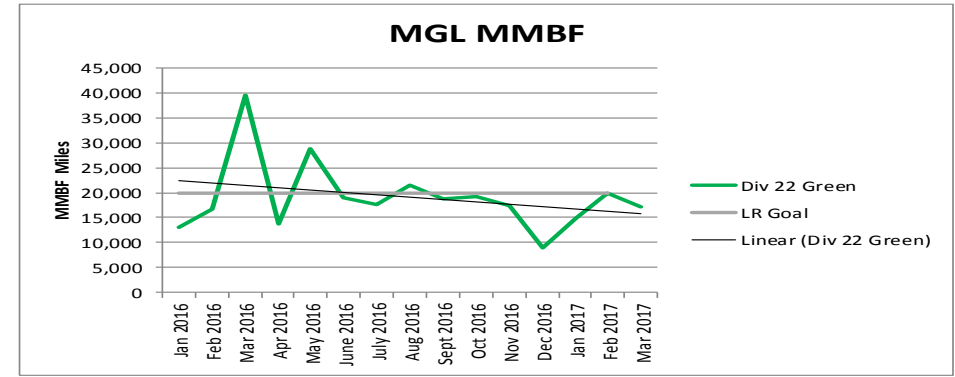
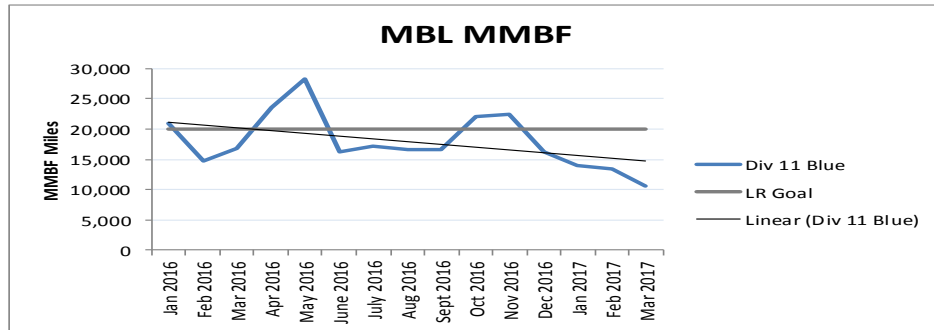
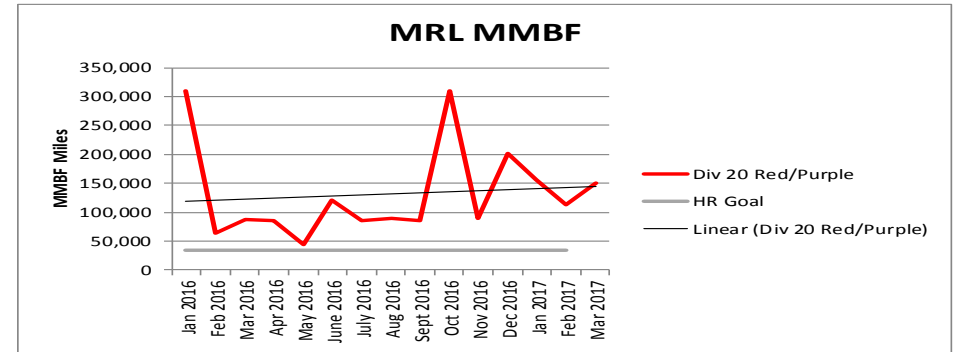
Mean Miles Between Major Failures (all)



MMBF by Division

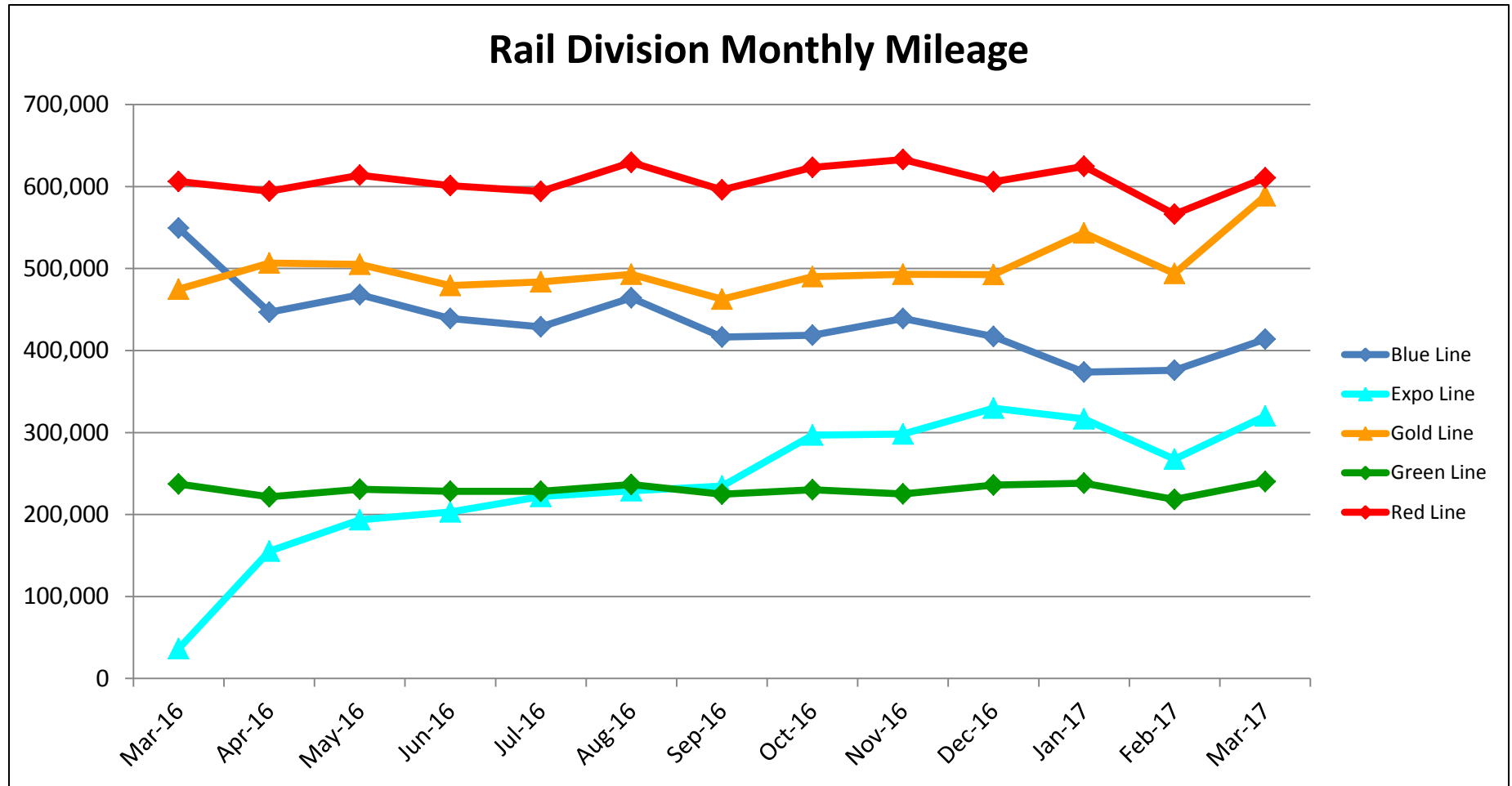
March 2016-2017

Month	Div 11 Blue	Div 20 Red/Purple	Div 22 Green	Div 21/24 Gold	Div 14 Expo	LR Goal	HR Goal
Jan 2016	20,976	310,794	13,075	24,371	-	20,000	35,000
Feb 2016	14,628	62,876	16,751	42,632	-	20,000	35,000
Mar 2016	16,739	86,604	39,513	61,444	-	20,000	35,000
Apr 2016	23,513	84,909	13,853	31,658	22,195	20,000	35,000
May 2016	28,263	43,282	28,871	63,137	31,044	20,000	35,000
June 2016	16,263	120,190	19,031	28,184	11,289	20,000	35,000
July 2016	17,156	84,844	17,567	19,271	13,173	20,000	35,000
Aug 2016	16,586	89,920	21,505	41,079	28,623	20,000	35,000
Sept 2016	16,651	85,121	18,725	42,049	23,505	20,000	35,000
Oct 2016	22,027	309,858	19,184	32,664	33,606	20,000	35,000
Nov 2016	22,473	89,953	17,318	70,436	29,108	20,000	35,000
Dec 2016	16,198	201,913	9,073	40,514	20,258	20,000	35,000
Jan 2017	13,950	155,755	14,888	60,522	33,309	20,000	35,000
Feb 2017	13,453	113,266	19,848	49,377	38,125	20,000	35,000
Mar 2017	10,615	150,470	17,159	65,389	109,624	20,000	35,000



Mileage Between Data Range (by month)

March 2016-2017



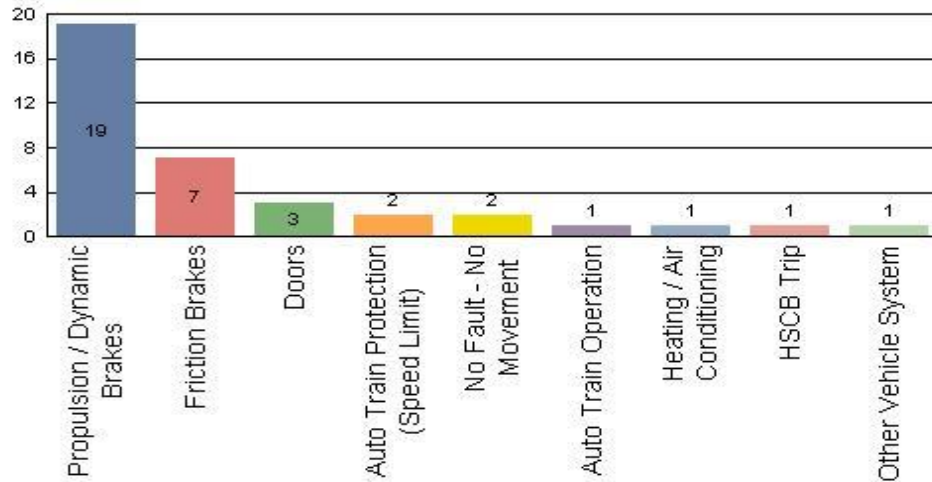
Notes:

- ♦ Gold Line increase in mileage is due to the open of the Foothill extension, which includes stations further apart and faster average running speeds.
- ♦ With the opening of Division 14 in Santa Monica, the Expo Line mileage is now being reported separately from the Blue Line.

Top Incident Categories March 2017

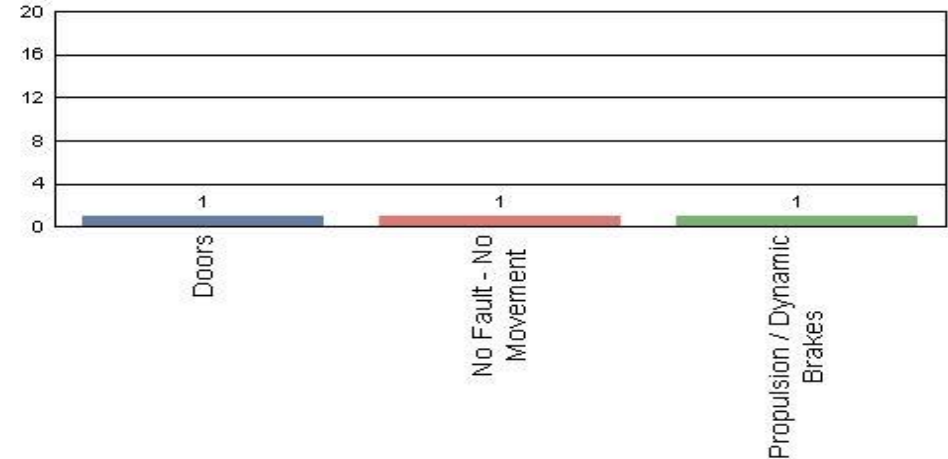
Metro Blue Line (Div 11)

Top Incident Categories



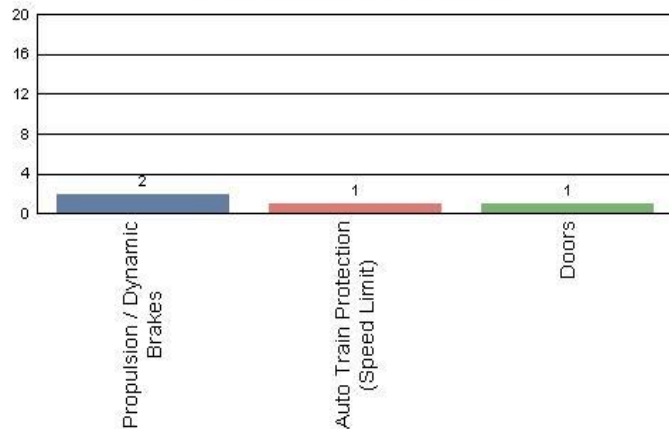
Metro Expo Line (Div 14)

Top Incident Categories



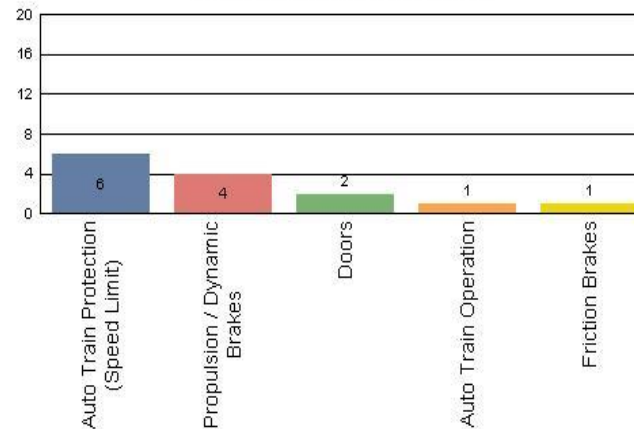
Metro Red/Purple Line (Div 20)

Top Incident Categories



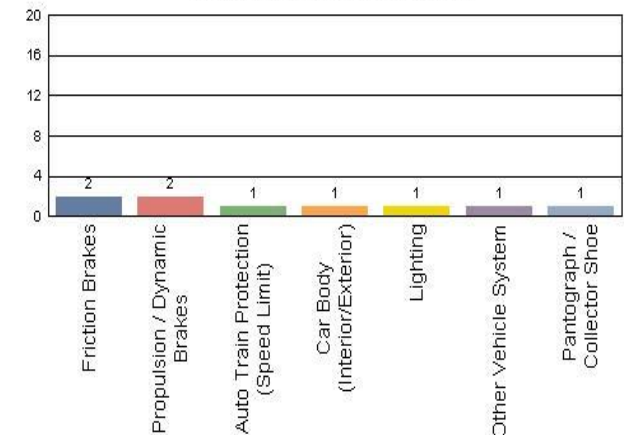
Metro Green Line (Div 22)

Top Incident Categories



Metro Gold Line (Div 21 & Div 24)

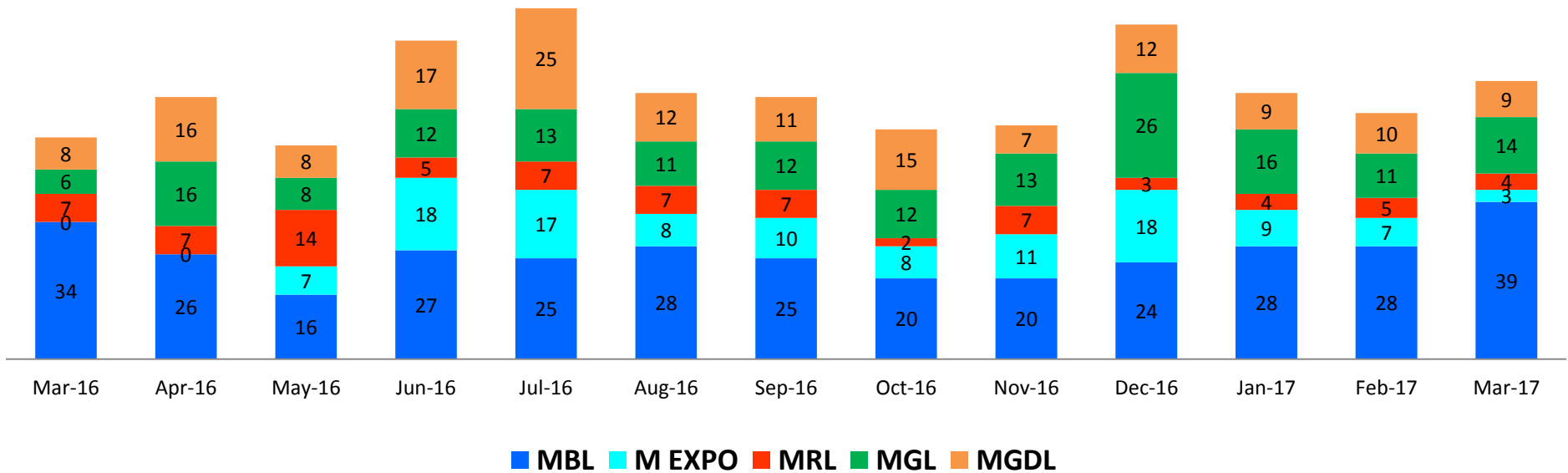
Top Incident Categories



Major Incidents

March 2016-2017

Numbers of Major System Failures (by Line)



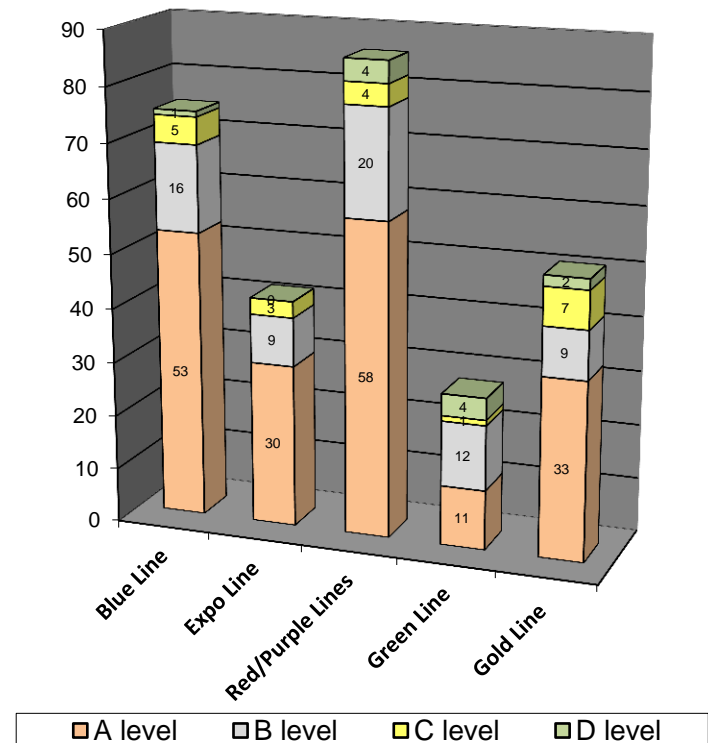
Preventive Maintenance Compliance

March 2016-2017

PM Compliance	Mar-16	Apr-16	May-16	Jun-16	Jul-16	Aug-16	Sep-16	Oct-16	Nov-16	Dec-16	Jan-17	Feb-17	Mar-17
Blue Line	100%	100%	100%	100%	100%	100%	100%	100%	100%	100%	100%	100%	100%
Expo Line	0%	0%	100%	100%	100%	100%	100%	100%	100%	100%	100%	100%	100%
Red/Purple Lines	100%	100%	100%	100%	100%	100%	100%	100%	100%	100%	100%	100%	100%
Green Line	100%	100%	93%	100%	100%	100%	97%	100%	100%	100%	100%	100%	100%
Gold Line	100%	100%	100%	100%	100%	100%	100%	100%	100%	100%	100%	100%	100%

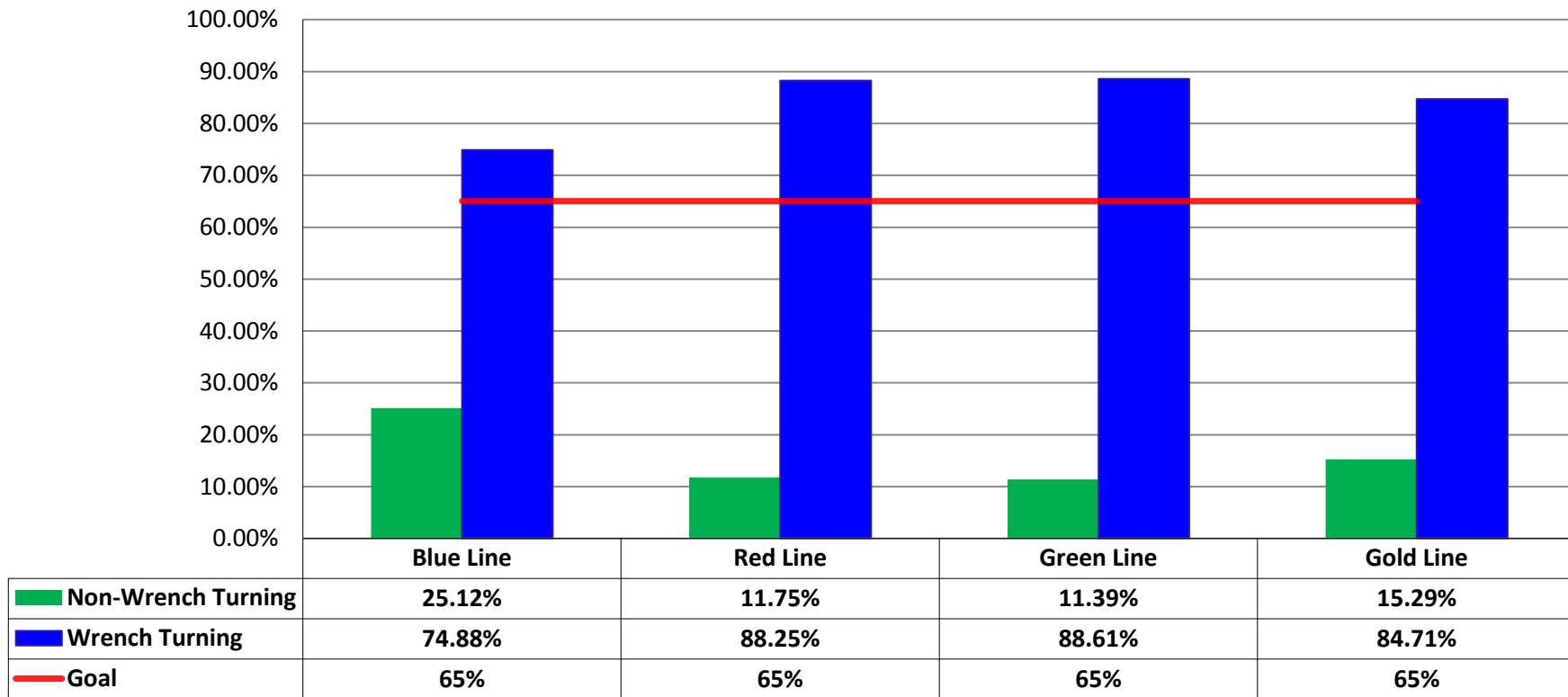
Number of Preventive Maintenance Inspections - March 2017					
Line	A level	B level	C level	D level	Totals
Blue Line	53	16	5	1	75
Expo Line	30	9	3	0	42
Red/Purple Lines	58	20	4	4	86
Green Line	11	12	1	4	28
Gold Line	33	9	7	2	51
Totals:	185	66	20	11	282

Explanation of PM Inspection levels		Miles			
Line	Type	A level	B level	C level	D level
Blue/Expo Lines	P865/P2020	5,000	15,000	30,000	60,000
Blue/Expo Lines	P2000	7,500	22,500	45,000	90,000
Red/Purple Lines	A650	7,500	22,500	45,000	90,000
Green Line	P2000	7,500	22,500	45,000	90,000
Gold Line	P2550	10,000	30,000	60,000	120,000
Gold/Expo Lines	P3010	10,000	30,000	60,000	120,000



RFS Leader Wrench Turning March 2017

RFS - Leader Wrench Turning March 2017



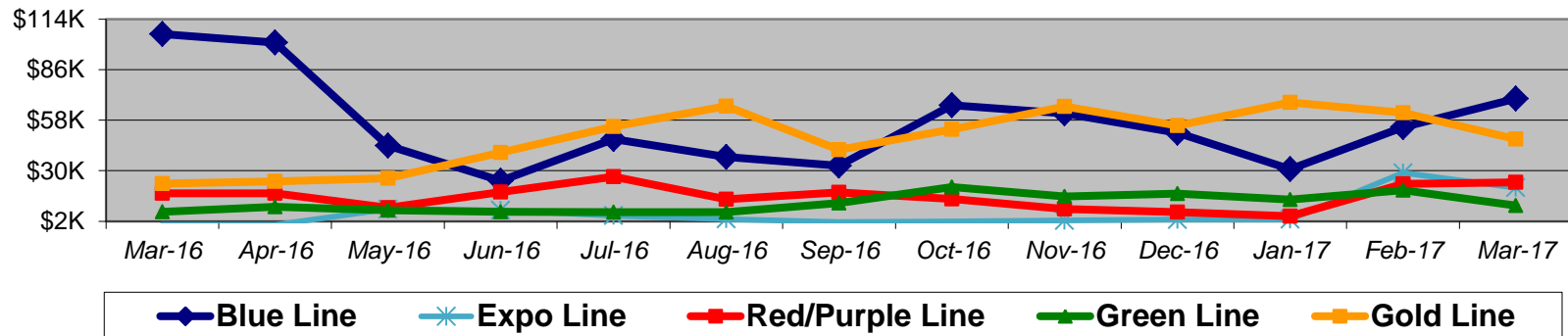
Notes: Labor hours contributed by Maint Specialist Leader, Rail Body/Paint Repair Leader, and Maint Specialist Temporary Leader

Vandalism & Graffiti Report

March 2016-2017

Graffiti Costs

	Mar-16	Apr-16	May-16	Jun-16	Jul-16	Aug-16	Sep-16	Oct-16	Nov-16	Dec-16	Jan-17	Feb-17	Mar-17	13-Month Period
Blue Line	\$106K	\$101K	\$44K	\$24K	\$48K	\$38K	\$33K	\$66K	\$62K	\$51K	\$31K	\$54K	\$70K	\$727K
Expo Line	\$K	\$K	\$9K	\$8K	\$5K	\$3K	\$2K	\$2K	\$2K	\$3K	\$3K	\$29K	\$21K	\$86K
Red/Purple Line	\$17K	\$17K	\$9K	\$18K	\$27K	\$14K	\$18K	\$14K	\$9K	\$7K	\$5K	\$23K	\$24K	\$203K
Green Line	\$7K	\$10K	\$8K	\$7K	\$7K	\$7K	\$12K	\$21K	\$16K	\$17K	\$14K	\$19K	\$11K	\$157K
Gold Line	\$23K	\$24K	\$26K	\$40K	\$54K	\$66K	\$42K	\$53K	\$66K	\$55K	\$68K	\$62K	\$48K	\$626K
Totals:	\$153K	\$153K	\$96K	\$98K	\$141K	\$128K	\$106K	\$157K	\$154K	\$133K	\$121K	\$187K	\$172K	\$1,799K



March 2017 Vandalism & Graffiti - All Rail				
	Qty	Labor	Materials	Totals
Windows Replaced	88	\$ 20,922	\$ 25,112	\$ 46,034
Vandal Shields Replaced	1,013	\$ 38,472	\$ 19,752	\$ 58,224
Seats Cleaned	344	\$ 7,505	\$ 40	\$ 7,545
Seats Inserts Replaced	302	\$ 14,490	\$ 8,632	\$ 23,122
Graffiti Removal - Other	1,568	\$ 25,648	\$ 5,729	\$ 31,377
Repainting Panels	195	\$ 6,143	\$ -	\$ 6,143
Totals	3,510	\$ 113,180	\$ 59,265	\$ 172,445

Vandalism & Graffiti Pictures

March 2017

Blue Line



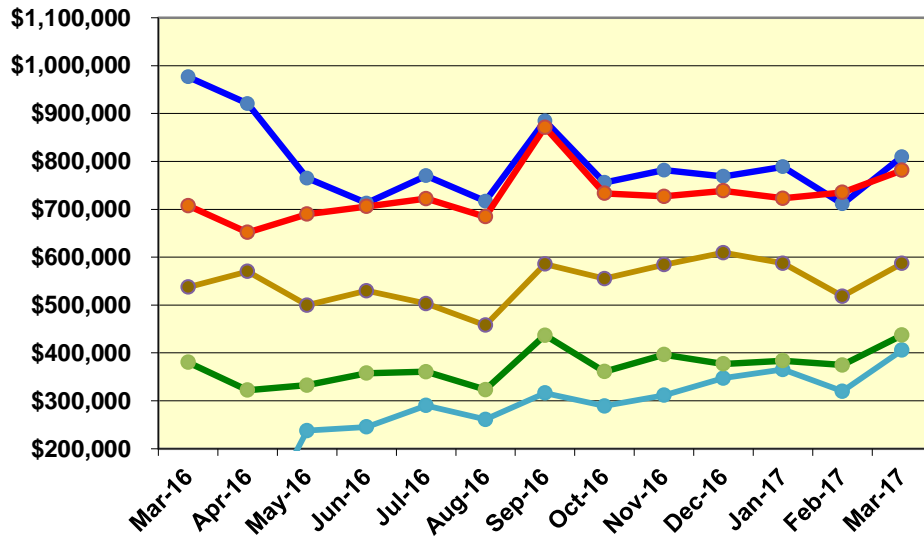
Expo Line



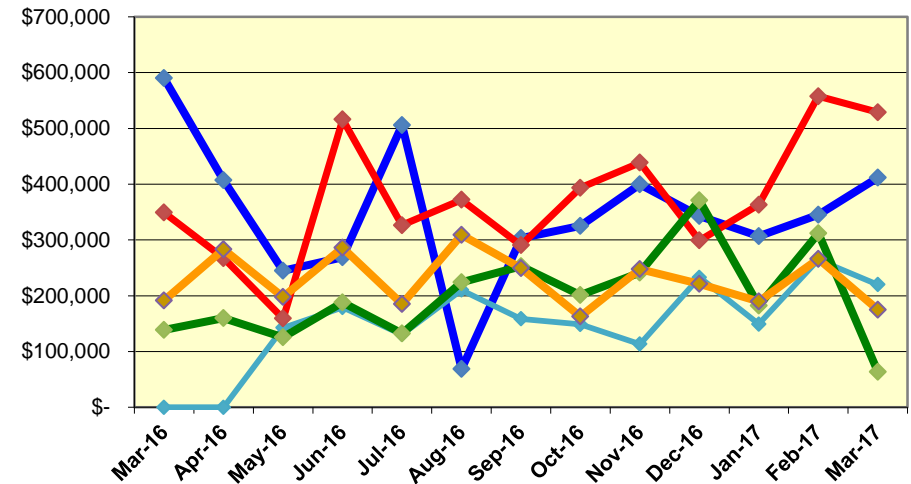
Labor and Material Costs

March 2016-2017

Labor Costs



Material Costs



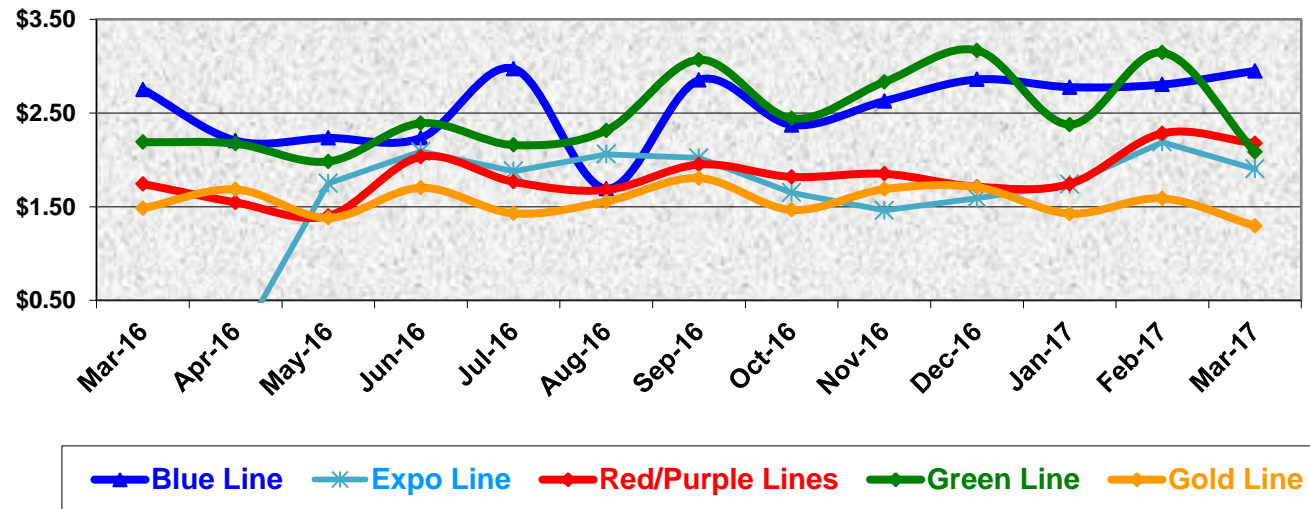
	Mar-16	Apr-16	May-16	Jun-16	Jul-16	Aug-16	Sep-16	Oct-16	Nov-16	Dec-16	Jan-17	Feb-17	Mar-17
Labor Costs													
Blue Line	\$ 976,568	\$ 920,945	\$ 765,108	\$ 712,774	\$ 770,143	\$ 716,923	\$ 884,555	\$ 755,958	\$ 781,662	\$ 768,756	\$ 788,785	\$ 711,354	\$ 810,012
Expo Line	\$ -	\$ -	\$ 237,630	\$ 245,339	\$ 290,199	\$ 261,217	\$ 316,395	\$ 289,213	\$ 311,627	\$ 347,280	\$ 365,354	\$ 320,019	\$ 405,656
Red/Purple Lines	\$ 707,560	\$ 651,771	\$ 689,764	\$ 705,772	\$ 722,363	\$ 684,555	\$ 871,431	\$ 733,202	\$ 727,093	\$ 738,672	\$ 723,038	\$ 735,394	\$ 781,595
Green Line	\$ 380,356	\$ 322,108	\$ 332,662	\$ 357,807	\$ 360,682	\$ 323,087	\$ 436,825	\$ 360,963	\$ 396,278	\$ 376,933	\$ 383,591	\$ 374,747	\$ 437,154
Gold Line	\$ 537,337	\$ 570,186	\$ 499,874	\$ 529,761	\$ 502,967	\$ 458,067	\$ 585,582	\$ 555,213	\$ 584,203	\$ 609,215	\$ 587,313	\$ 518,524	\$ 586,949
Totals	\$ 2,601,822	\$ 2,465,011	\$ 2,525,038	\$ 2,551,454	\$ 2,646,353	\$ 2,443,849	\$ 3,094,789	\$ 2,694,548	\$ 2,800,863	\$ 2,840,856	\$ 2,848,080	\$ 2,660,038	\$ 3,021,365

	Mar-16	Apr-16	May-16	Jun-16	Jul-16	Aug-16	Sep-16	Oct-16	Nov-16	Dec-16	Jan-17	Feb-17	Mar-17
Material Costs													
Blue Line	\$ 589,879	\$ 407,085	\$ 245,001	\$ 268,750	\$ 505,721	\$ 68,670	\$ 303,202	\$ 324,999	\$ 399,427	\$ 342,695	\$ 306,710	\$ 344,931	\$ 411,541
Expo Line	\$ -	\$ -	\$ 142,495	\$ 179,099	\$ 130,419	\$ 210,312	\$ 158,666	\$ 148,670	\$ 113,229	\$ 233,001	\$ 149,260	\$ 264,561	\$ 219,980
Red/Purple Lines	\$ 349,093	\$ 267,284	\$ 159,258	\$ 515,978	\$ 326,251	\$ 371,920	\$ 290,597	\$ 393,507	\$ 438,480	\$ 299,157	\$ 363,192	\$ 557,616	\$ 528,820
Green Line	\$ 138,673	\$ 159,615	\$ 125,334	\$ 188,111	\$ 132,247	\$ 224,414	\$ 252,988	\$ 201,438	\$ 241,344	\$ 370,755	\$ 182,518	\$ 312,113	\$ 63,371
Gold Line	\$ 191,351	\$ 283,211	\$ 197,620	\$ 285,877	\$ 185,153	\$ 308,906	\$ 249,398	\$ 162,899	\$ 247,842	\$ 221,172	\$ 189,520	\$ 265,930	\$ 175,047
Totals	\$ 1,268,996	\$ 1,117,195	\$ 869,708	\$ 1,437,815	\$ 1,279,791	\$ 1,184,222	\$ 1,254,851	\$ 1,231,513	\$ 1,440,322	\$ 1,466,779	\$ 1,191,200	\$ 1,745,150	\$ 1,398,760

Cost Per Mile March 2016-2017

Cost per mile:	Mar-16	Apr-16	May-16	Jun-16	Jul-16	Aug-16	Sep-16	Oct-16	Nov-16	Dec-16	Jan-17	Feb-17	Mar-17	Average
Blue Line	\$2.75	\$2.21	\$2.23	\$2.24	\$2.97	\$1.69	\$2.85	\$2.37	\$2.63	\$2.86	\$2.78	\$2.80	\$2.95	\$2.56
Expo Line	\$0.00	\$0.00	\$1.75	\$2.09	\$1.88	\$2.06	\$2.02	\$1.65	\$1.46	\$1.59	\$1.74	\$2.19	\$1.90	\$1.85
Red/Purple Lines	\$1.74	\$1.55	\$1.40	\$2.03	\$1.77	\$1.68	\$1.95	\$1.82	\$1.85	\$1.71	\$1.74	\$2.28	\$2.18	\$1.82
Green Line	\$2.19	\$2.17	\$1.98	\$2.39	\$2.16	\$2.31	\$3.07	\$2.44	\$2.83	\$3.17	\$2.38	\$3.15	\$2.08	\$2.49
Gold Line	\$1.48	\$1.68	\$1.38	\$1.70	\$1.43	\$1.56	\$1.81	\$1.47	\$1.69	\$1.71	\$1.43	\$1.59	\$1.29	\$1.55

Cost per Mile



ATU Absences vs. Overtime

March 2017

ABSENCE TYPE and HOURS	3941 Blue	3947 Expo	3942 Red	3943 Green	3944 Gold	3948 Monrovia	Total
AWP-ABSENT W/O PERMISSION	-	-	-	16	-	-	16
BER-BEREAVEMENT	-	-	24	24	-	-	48
CTO-COMPENSATORY TIME OFF	255	237	416	178	16	268	1,369
CUT-EMPLOYEE LEAVES EARLY	3	3	2	1	-	1	10
DSL-DISABILITY LEAVE/LONG	648	-	-	336	-	24	1,008
EFH-EMG. FLOAT HOL.	-	8	16	24	-	16	64
ETO-EXCUSED TIME OFF	86	73	52	16	-	23	250
FMI-FAM IND INJURY	-	-	-	184	-	56	240
FML-FAMILY CARE LEAVE	40	240	316	4	8	160	768
FMS-FAMILY LEAVE SICK	8	-	103	-	-	32	143
HLF-HOLIDAY FLOATING	120	72	208	120	8	104	632
II-INDUSTRIAL INJURY	-	112	-	168	-	-	280
IPD-INJURED PARTIAL DAY	-	6	-	-	-	-	6
JUR-JURY DUTY	8	-	-	-	8	8	24
LC1-LABOR CODE 233	374	112	338	88	33	152	1,097
LTI-OCCPIL/LONGTRM INJ LEAVE	360	-	640	-	-	-	1,000
MLN-MILITARY ABSENCE-UNPAID	-	-	8	-	-	8	16
OWP-OFF WITH PERMISSION	-	1	-	-	-	-	1
RTO-REQUESTED TIME OFF-NO PAY	27	-	-	-	8	12	47
SCK-SICK PAY	320	32	264	64	56	192	928
SCW-SICK WITHOUT PAY	26	-	92	64	-	8	190
SPN-SCHOOL PARTNER NOT PAID	-	-	8	-	-	8	16
SUS-DISCIPLINARY SUSPENSION	-	80	-	-	-	-	80
TAR-TARDY	4	2	1	2	0	1	11
VAC-VACATION	919	252	1,009	300	153	422	3,055
VAS-VACATION WHILE SICK	-	-	25	-	-	-	25
*TRAINING	-	-	-	208	240	240	688
Total Absence Hours	3,197	1,229	3,522	1,797	530	1,735	12,010
**ATU Number of Work Force (active)	106	42	103	44	17	60	372
Full Work Force hours/month	18,370	7,279	17,850	7,625	2,946	10,400	64,468
Absence as a % of Work Force	17%	17%	20%	24%	18%	17%	19%

OVERTIME TYPE and HOURS	3941 Blue	3947 Expo	3942 Red	3943 Green	3944 Gold	3948 Monrovia	Total
CTB-COMPENSATORY TIME TO BANK	133	60	87	72	29	116	498
OTP-PREM OVERTIME	4,071	1,887	4,325	2,452	72	1,265	14,072
TRO OVERTIME	-	36	-	-	-	-	36
WLO-Worked Lunch Overtime	153	179	262	83	20	62	757
Total Overtime Hours	4,357	2,162	4,673	2,606	121	1,443	15,363
Overtime as a % of Work Force	24%	30%	26%	34%	4%	14%	24%

*Training hours captured by Instruction Department are added to Absences Report.

**ATU Employee Numbers from ATU Manpower Status Report (last week of the month)

RFS Instruction Department Activities

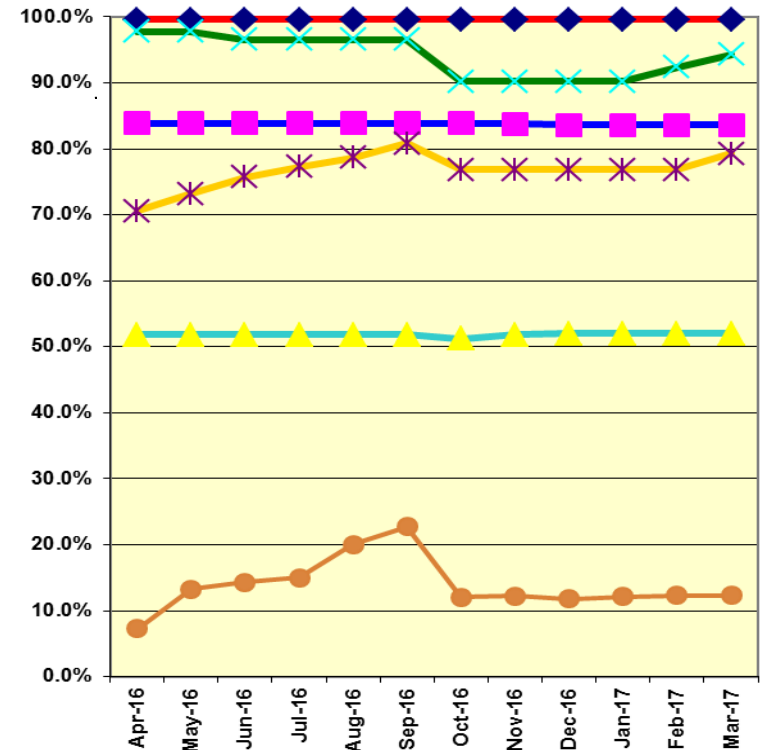
March 2017

LRV Training classes completed during the month of March 2017

Description	Course Hours	Student Count	Training Hours
<u>Blue Line Training - (P865/2020 & P2000 LRVs):</u>			
No vehicle training this month			0
Total Blue Line Training (Hours):			0
<u>Light Rail Training [In Monrovia (P2550 & P3010 LRVs)]:</u>			
RFS ANSALDOBREDA 2550 PANTOGRAPH/HIGH VOLTAGE DIST.	40	3	120
RFS ANSALDOBREDA 2550 VEHICLE SYSTEMS	40	3	120
Total Light Rail Training (Hours):			240
<u>Expo Line Training - (P865/2020, P2000, & P3010 LRVs):</u>			
No vehicle training this month			0
Total Expo Line Training (Hours):			0
<u>Gold Line Training (P2550 LRVs):</u>			
RFS ANSALDOBREDA 2550 PANTOGRAPH/HIGH VOLTAGE DIST.	40	3	120
RFS ANSALDOBREDA 2550 VEHICLE SYSTEMS	40	3	120
Total Gold Line Training (Hours):			240
<u>Green Line Training (P2000 LRVs):</u>			
RFS SIEMENS 2000 T/B, SANDERS	8	2	16
RFS SIEMENS 2000 FRICTION BRAKES	48	2	96
RFS SIEMENS 2000 US&S ATP/ATO/TWC	48	2	96
Total Green Line Training (Hours):			208
Total RFS Instruction for the month of March 2017 (Hours):			1,128

<u>Core Vehicle Training Completed:</u>	<u>BLUE</u>	<u>EXPO</u>	<u>GOLD</u>	<u>GREEN</u>
Percentage of core vehicle training complete:	83.6%	21.3%	79.3%	94.3%
Siemens P2000 training complete:	52.0%	39.8%	N/A	N/A
KinkiSharyo P3010 training complete:	0.5%	18.1%	23.9%	N/A
Average Specialist Rail Experience Level in Years:	15.4	3.5	7.3	10.5

Core Training Completed



Variations caused by new hires, employee transfers, & training completed

RFS Instruction Department Activities

March 2017

HRV & Other Training classes completed during the month of March 2017

<u>Description</u>	<u>Course Hours</u>	<u>Student Count</u>	<u>Training Hours</u>
<u>Red Line Training - Breda A650 HRV:</u>			
NO VEHICLE TRAINING THIS MONTH	0	0	0
Total Red Line Training Hours			0

<u>JAC Training (P2000 & P2550 LRVs)</u>			
RFS BRED A 650 COUPLER	8	10	80
RFS SIEMENS 2000 AUX INVERTER	32	9	288
RFS SIEMENS 2000 PANTOGRAPH	8	9	72
Total Expo Line Training Hours			440

<u>Other Instruction Activities</u>	<u>Curriculum</u>	<u>Administrative</u>	<u>Technical Support</u>	<u>Total</u>
A650 Curriculum, Administrative, and Technical Support	32	80	60	172
P865/P2020 Curriculum, Administrative, and Technical Support	0	8	16	24
P2000 Curriculum, Administrative, and Technical Support	64	64	80	208
P2550 Curriculum, Administrative, and Technical Support	8	32	24	64
P3010 Curriculum, Administrative, and Technical Support	200	32	0	232
International Rodeo Preparation				92
Time Off (HOL, TOV, & SCK)				120
Total Other Instruction Activities				912

<u>Core Vehicle Training Completed:</u>	<u>RED</u>	<u>JAC</u>
Percentage of Core Vehicle Training Complete:	99.6%	90.0%

Average Specialist Rail Experience Level in Years:	12.9	0.7
--	-------------	------------