



Rail Fleet Services Monthly Report October 2017



Metro

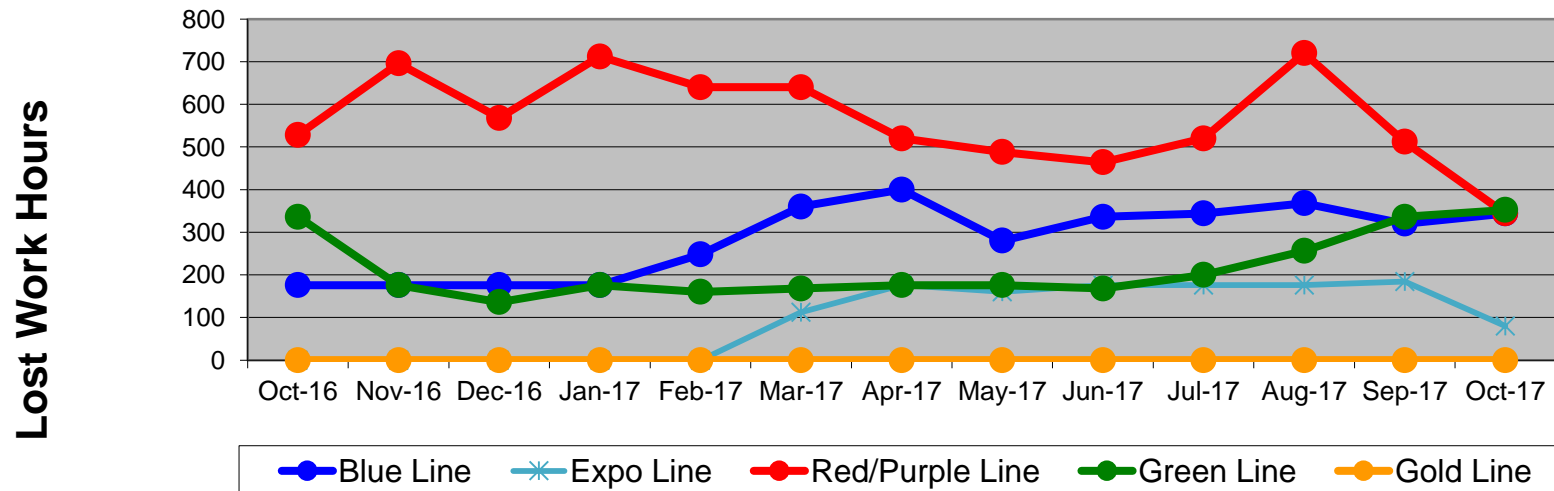
Table of Contents

•	Safety & Cleanliness		
	- Industrial Injuries	Page	3
	- Rail Vehicle Accidents & Major Incidents	Page	4
	- Car Cleanliness	Page	5
•	Customer Service		
	- Service Delivery – AM/PM Pull-Outs	Page	6
	- Vehicle Utilization – Red Line	Page	7
	- Vehicle Utilization – Blue Line & Expo Line	Page	8
	- Vehicle Utilization – Green Line & Gold Line	Page	9
	- All Train Delay Incidents	Page	10
	- Mean Miles Between Failures (Major) & MMBF by Division	Page	11-12
	- Mileage Between Data Range (by month)	Page	13
•	Business Processes		
	- Top Incident Categories	Page	14
	- Major Incidents	Page	15
	- Preventive Maintenance Compliance	Page	16
	- RFS Leader Wrench Turning	Page	17
•	Finance		
	- Vandalism & Graffiti Costs	Page	18
	- Vandalism & Graffiti Pictures	Page	19
	- Labor & Material Costs	Page	20
	- Cost per mile	Page	21
	- Absence vs. Overtime/ %Absence and %Overtime of ATU	Page	22-23
•	Growth		
	- RFS Instruction Department Activities	Page	24-25

Industrial Injuries – Lost Work Hours October 2016-2017

	Oct-16	Nov-16	Dec-16	Jan-17	Feb-17	Mar-17	Apr-17	May-17	Jun-17	Jul-17	Aug-17	Sep-17	Oct-17	13-Month Period
Blue Line	176	176	176	176	248	360	400	280	336	344	368	320	344	3,704
Expo Line	0	0	0	0	0	112	176	160	176	176	176	184	80	1,240
Red/Purple Line	528	696	568	712	640	640	520	488	464	520	720	512	344	7,352
Green Line	336	176	136	176	160	168	176	176	168	200	256	336	352	2,816
Gold Line	0	0	0	0	0	0	0	0	0	0	0	0	0	0
Totals	1,040	1,048	880	1,064	1,048	1,280	1,272	1,104	1,144	1,240	1,520	1,352	1,120	15,112

Industrial Injuries (lost work hours)



Rail Vehicle Accidents & Major Incidents

October 2016-2017

Repair Costs	Oct-16	Nov-16	Dec-16	Jan-17	Feb-17	Mar-17	Apr-17	May-17	Jun-17	Jul-17	Aug-17	Sep-17	Oct-17	13-Month Period
Blue Line	\$28,089	\$0	\$2,352	\$170,311	\$0	\$1,427	\$2,586	\$0	\$15,084	\$632	\$268	\$3,683	\$31,202	\$255,634
Expo Line	\$9,468	\$0	\$381	\$763	\$1,930	\$0	\$1,420	\$0	\$0	\$0	\$191	\$0	\$25,571	\$39,724
Red/Purple Line	\$0	\$0	\$0	\$0	\$1,032	\$0	\$0	\$0	\$0	\$0	\$0	\$0	\$0	\$1,032
Green Line	\$0	\$0	\$0	\$0	\$0	\$0	\$334	\$0	\$0	\$0	\$0	\$0	\$0	\$334
Gold Line	\$5,694	\$0	\$0	\$3,789	\$15,829	\$1,871	\$191	\$2,692	\$0	\$0	\$0	\$1,343	\$5,751	\$37,160
Totals	\$43,251	\$0	\$2,733	\$174,863	\$18,791	\$3,298	\$4,531	\$2,692	\$15,084	\$632	\$459	\$5,026	\$62,524	\$333,884

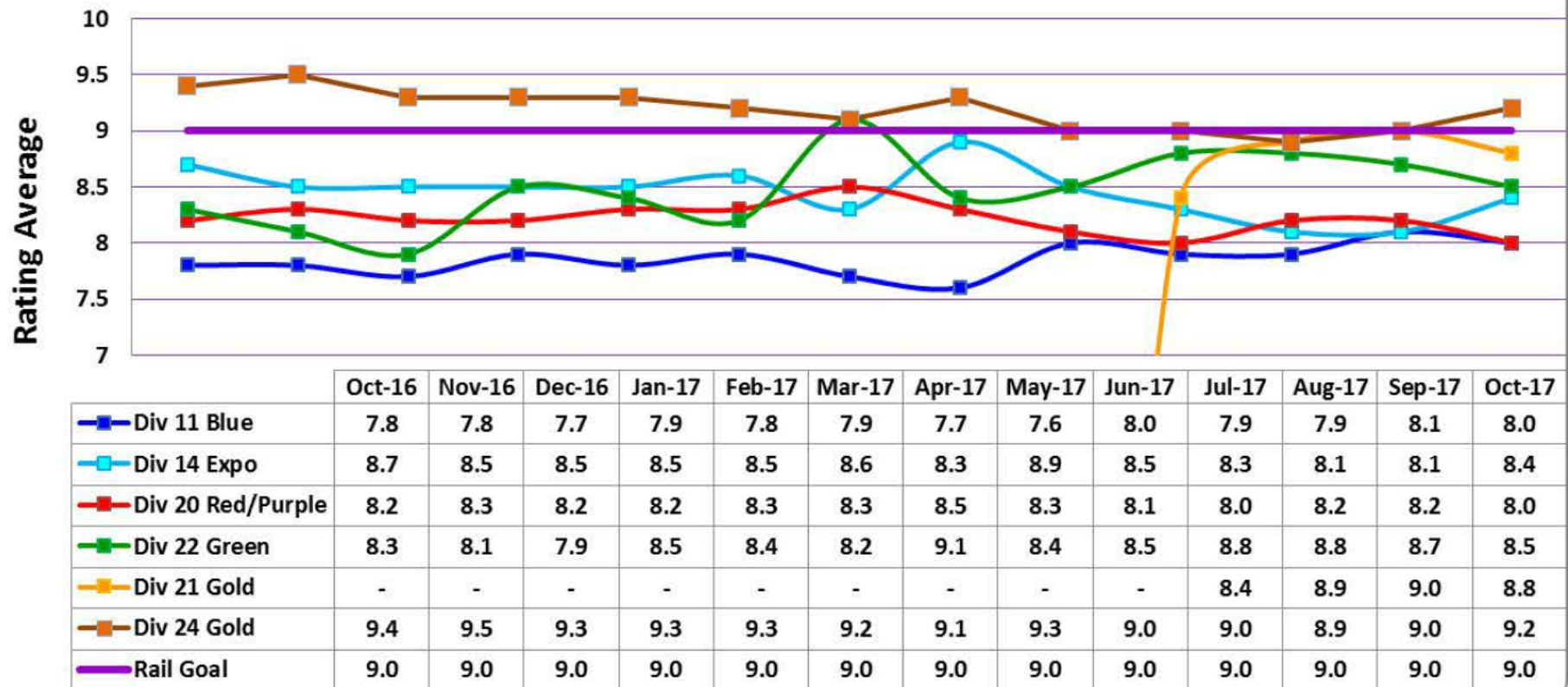
Rail Vehicle Accident Costs - October 2017				
Date	Incident #	Problem Code	Incident Description	Repair Cost
Metro Blue Line				
10/21/17	2925007	Train vs. Vehicle	A 10-73 was reported at 55th Grade Crossing, NB.	\$ 30,309
10/26/17	2927165	Train vs. Pedestrian	A 10-72 was reported at 55th Grade Crossing.	\$ 893
Metro Blue Line Total				\$ 31,202
Metro Expo Line				
10/7/17	2919831	Train vs. Pedestrian	A 10-72 was reported at 11th St. Grade Crossing Track 4, SB.	\$ 2,425
10/9/17	2920293	Train vs. Vehicle	A 10-73 was reported at Normandie Ave., Track 3, NB.	\$ 10,347
10/17/17	2923610	Train vs. Pedestrian	A 10-72 was reported at NB just before 17th St. Station at the Pedestrian Crossing.	\$ 386
10/23/17	2925906	Train vs. Vehicle	A 10-73 was reported at Exposition Blvd. and Crenshaw.	\$ 5,369
10/27/17	2927840	Train vs. Pedestrian	A 10-72 was reported at Pico Station, Track 1, NB.	\$ -
10/28/17	2928010	Train vs. Vehicle	A 10-73 was reported at Exposition Blvd. and USC Watt Way, Track 4.	\$ 7,044
Metro Expo Line Total				\$ 25,571
Metro Gold Line				
10/1/17	2917260	Train vs. Pedestrian	A 10-72 was reported at Pasadena and Monterey, Track 2, SB.	\$ 5,751
Metro Gold Line Total				\$ 5,751
Grand Total				\$ 62,524
10-71 = Train vs. Object/ 10-72 = Train vs. Pedestrian/ 10-73 = Train vs. Vehicle/ 10-74 = Train vs. MTA Vehicle/ 10-75 = Derailment				



Note: Repair costs are only the expenses captured during the time period of the report. Actual costs may be significantly higher, if repairs are spread out over several months.

Rail Vehicle – Car Cleanliness October 2016-2017

Car Cleanliness Monthly Report



Service Delivery October 2017

Blue Line Fleet Size: 98

<u>Pull Out</u>	<u>Vehicles Required</u>	<u>Average Available</u>	<u>% Up (Down)</u>
Weekday:	72	74	103%
Weekend:	26	61	235%

Monthly Mileage: 522,329

Expo Line Fleet Size: 52

<u>Pull Out</u>	<u>Vehicles Required</u>	<u>Average Available</u>	<u>% Up (Down)</u>
Weekday:	42	41	98%
Weekend:	30	39	130%

Monthly Mileage: 292,352

Red/Purple Line Fleet Size: 98

<u>Pull Out</u>	<u>Vehicles Required</u>	<u>Average Available</u>	<u>% Up (Down)</u>
Weekday:	64	72	113%
Weekend:	40	62	155%

Monthly Mileage: 625,846

Green Line Fleet Size: 32

<u>Pull Out</u>	<u>Vehicles Required</u>	<u>Average Available</u>	<u>% Up (Down)</u>
Weekday:	22	24	109%
Weekend:	14	19	136%

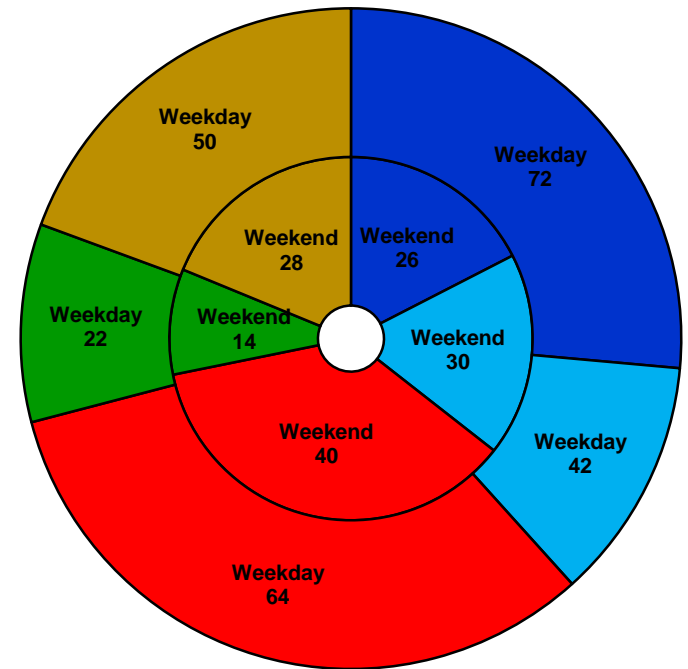
Monthly Mileage: 252,978

Gold Line Fleet Size: 65

<u>Pull Out</u>	<u>Vehicles Required</u>	<u>Average Available</u>	<u>% Up (Down)</u>
Weekday (Div 21):	10	10	100%
Weekday (Div 24):	40	43	108%
Weekend (Div 24):	28	41	146%

***Monthly Mileage: 598,571**

*** Gold Line monthly mileage includes Division 21 and 24.**

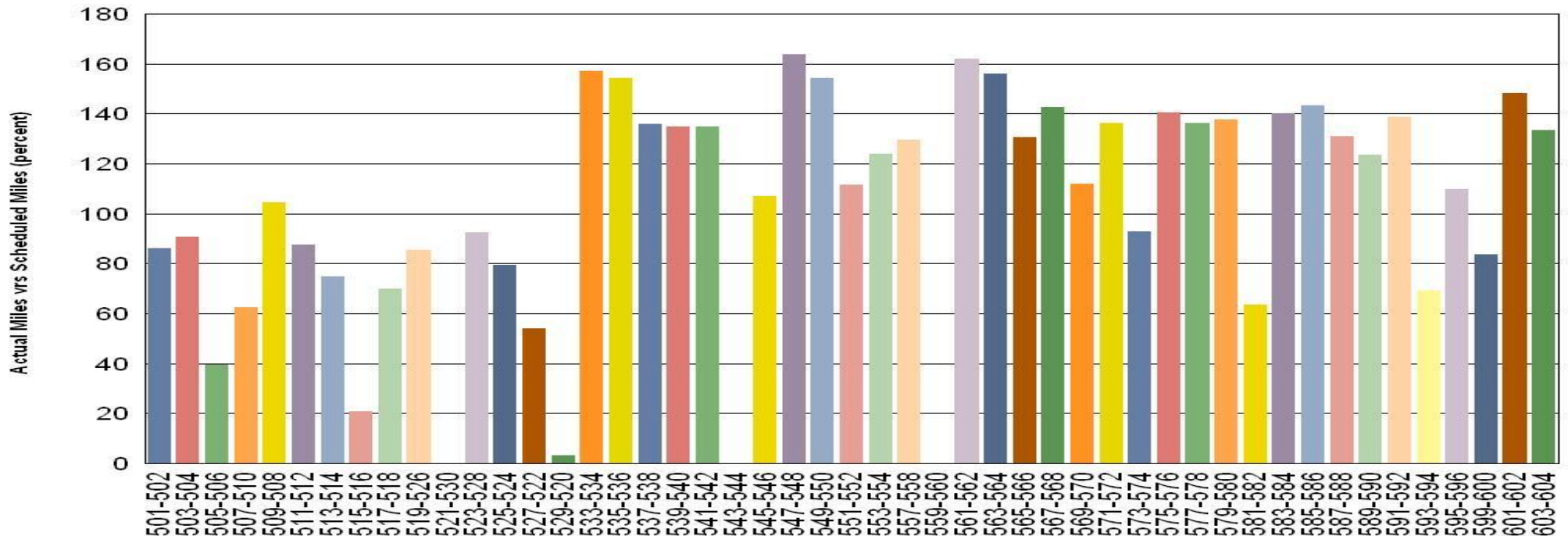


■ Blue Line
 ■ Expo Line
 ■ Red/Purple Line
■ Green Line
 ■ Gold Line

NOTES: Standby trains not included in vehicle requirements

Vehicle Utilization October 2017

Metro Red/Purple Line (98 Cars)



Red/Purple Line:

The following cars were out of service due to:

Car # 515-516 – Propulsion Issue

Car # 521-530 – Propulsion Issue pending for KRS Assembly

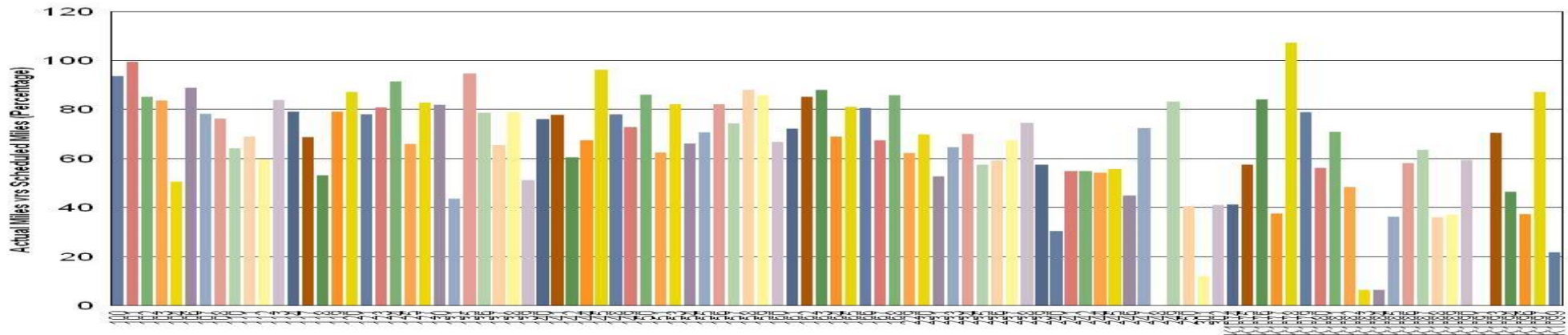
Car # 529-520 – Propulsion Issue

Car # 543-544 – Interior Renovation

Car # 559-560 – Propulsion Shoot Through

Vehicle Utilization October 2017

Metro Blue Line (98 Cars)

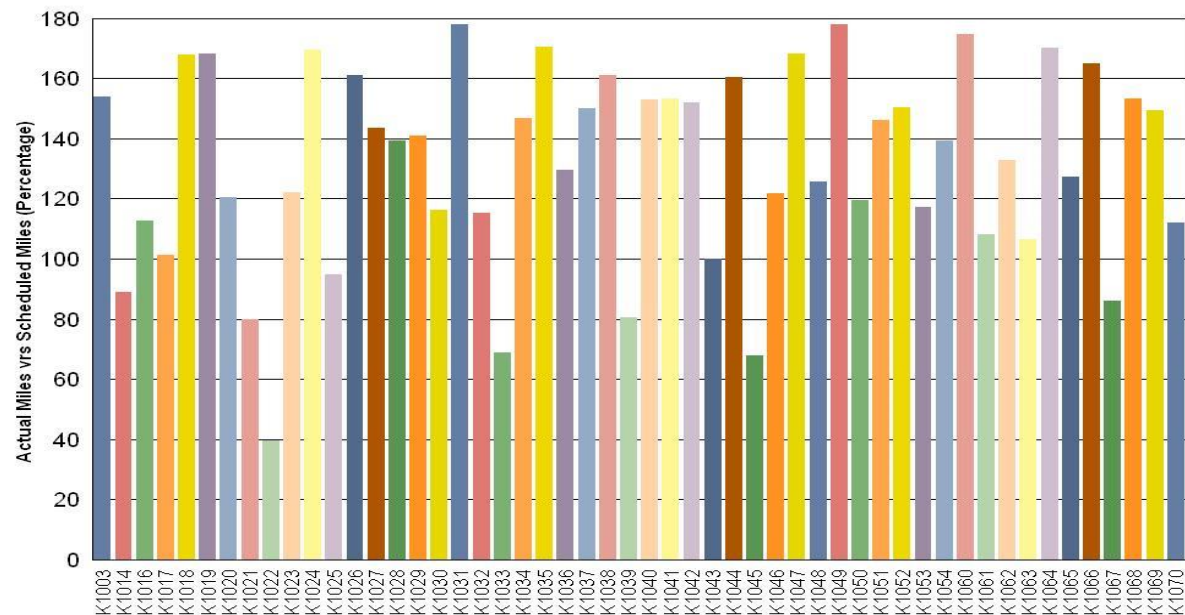


Blue Line: The following cars were out of service due to:

- Car # 240 – Exterior Paint Restoration
- Car # 248 – A/B Truck Overhaul
- Car # 301 – Exterior Paint Restoration
- Car # K1077 – ATP Issue / Open Work Orders
- Car # K1083 – Transferred from Div 22 to Div 11 on 10/29/2017
- Car # K1084 – Transferred from Div 22 to Div 11 on 10/29/2017
- Car # K1085 – A-end Master Controller Issue
- Car # K1088 – F/B Self Applying / Speed Sensor Issue
- Car # K1089 – Warranty Work Orders
- Car # K1091 – CPUC Accepted, Moved to Div 11 on 11/5/2017
- Car # K1096 – Arrived at Division 11 on 10/22/2017 / Warranty WO
- Car # K1099 – Arrived at Division 11 on 10/28/2017 / Warranty WO

Expo Line: There were no vehicles under-utilized during the month of October 2017.

Metro Expo Line (52 Cars)



Note: Percentage includes an average 4% mileage deduction for yard mileage and vehicle testing.

Vehicle Utilization October 2017

Green Line:

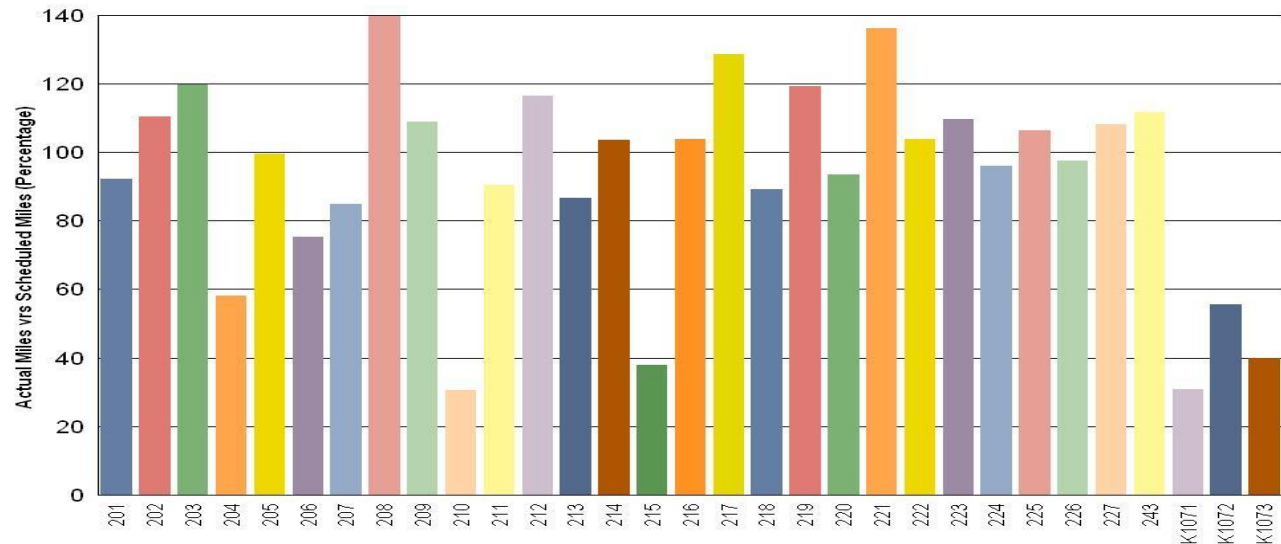
The following cars were out of service due to:

Car # 210 – Propulsion Issue

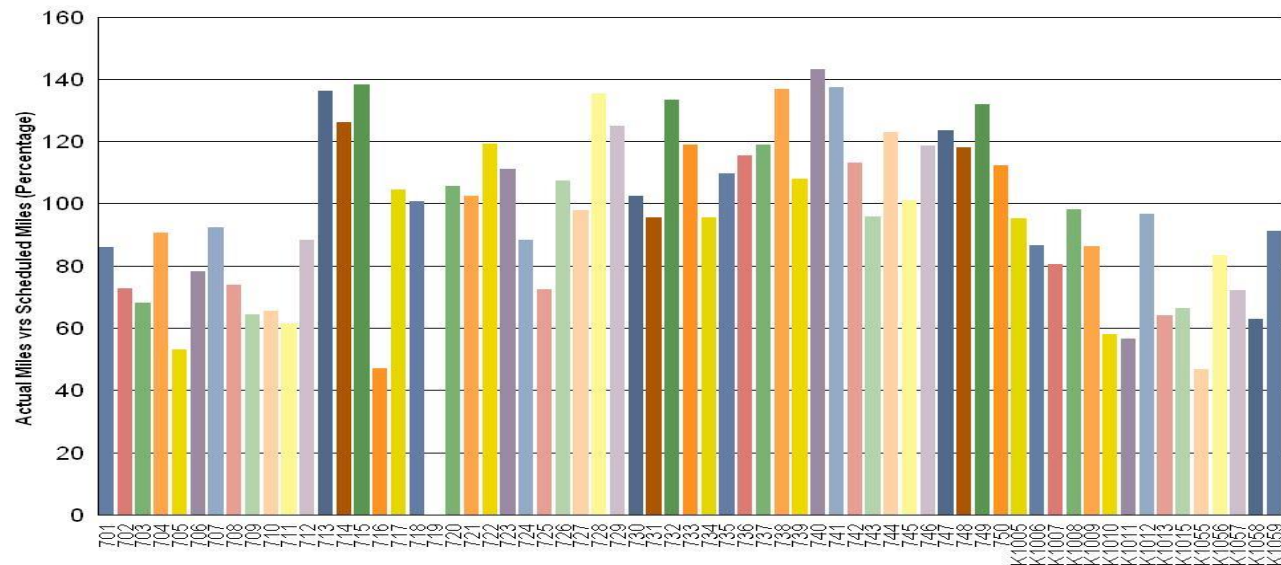
Car # 215 – Friction Brakes/Truck Replacement

Car # K1071 – Being used for Transportation training

Metro Green Line (32 Cars)



Metro Gold Line (65 Cars)

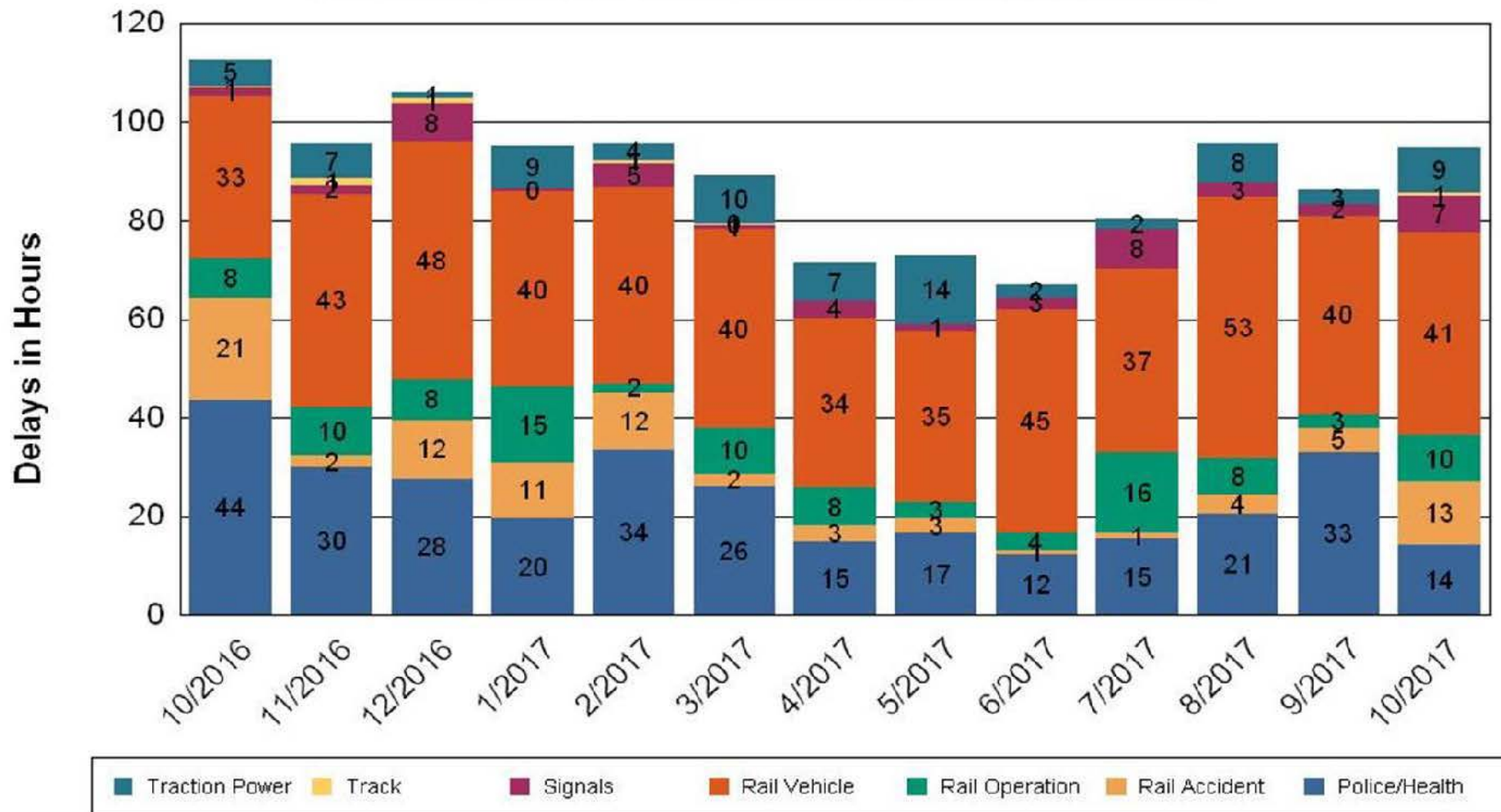


•Percentage includes an average 4% mileage deduction for yard mileage and vehicle testing.

All Train Delays (Hours) October 2016-2017

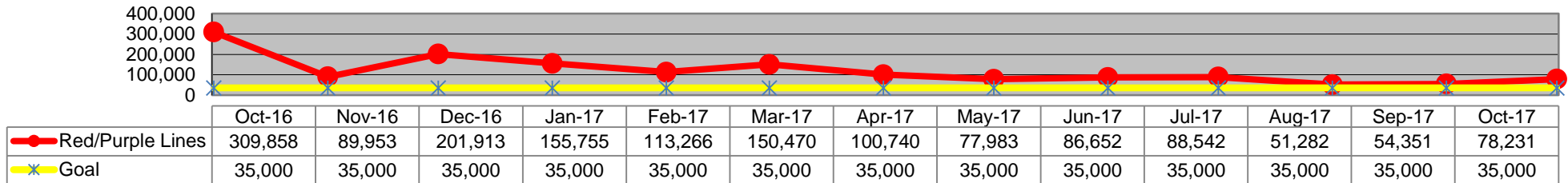
All Train Delays

Totals Include the delay to all trains involved (not just the primary incident)

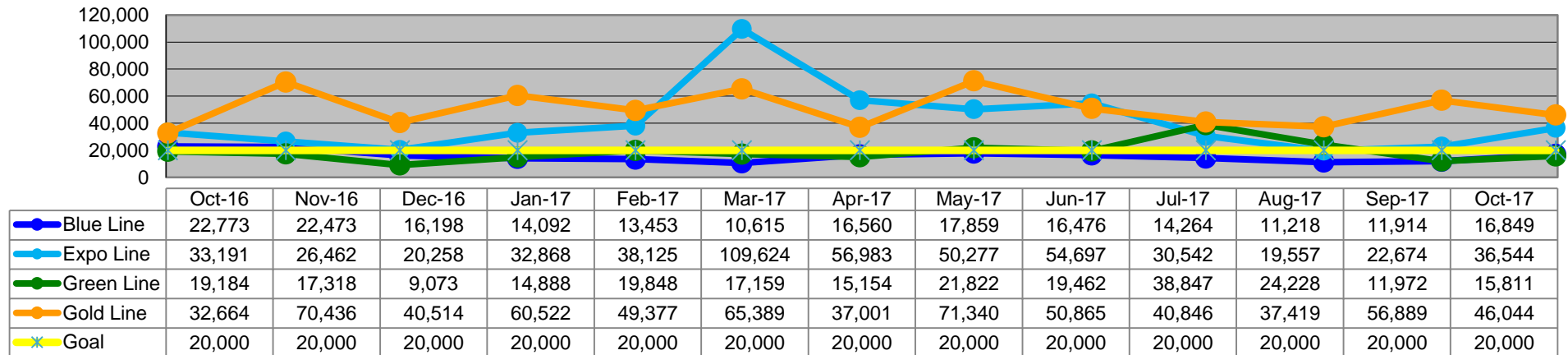


Mean Miles Between Major Failures (MMBF) October 2016-2017

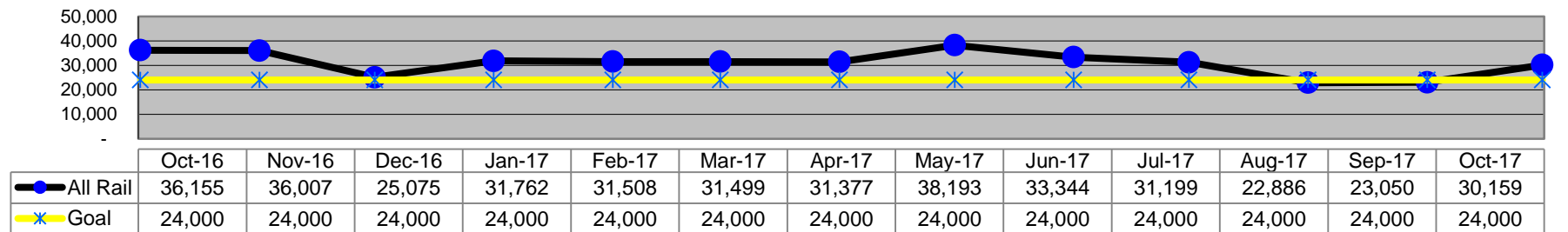
Mean Miles Between Major Failures - Heavy Rail



Mean Miles Between Major Failures - Light Rail

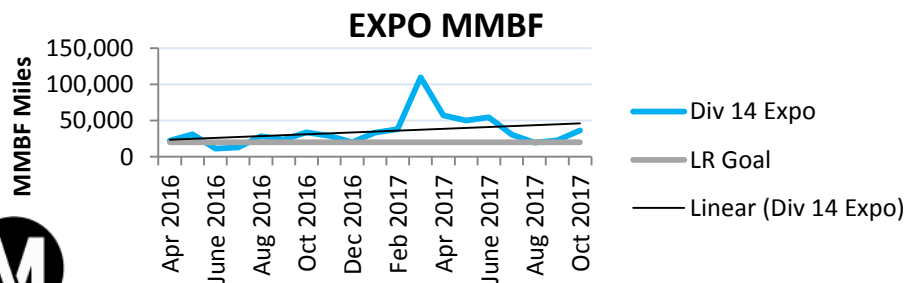
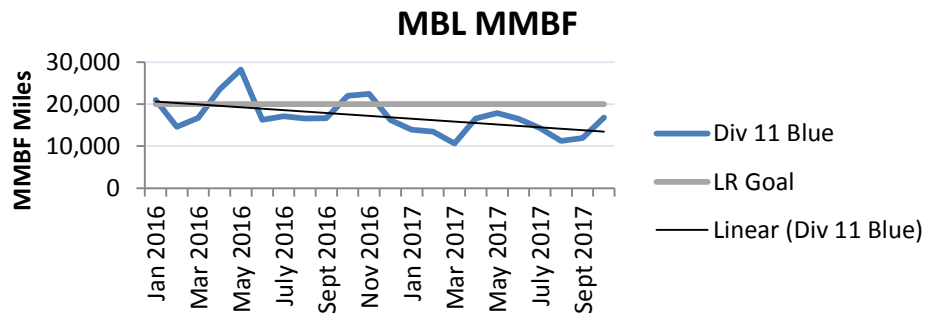
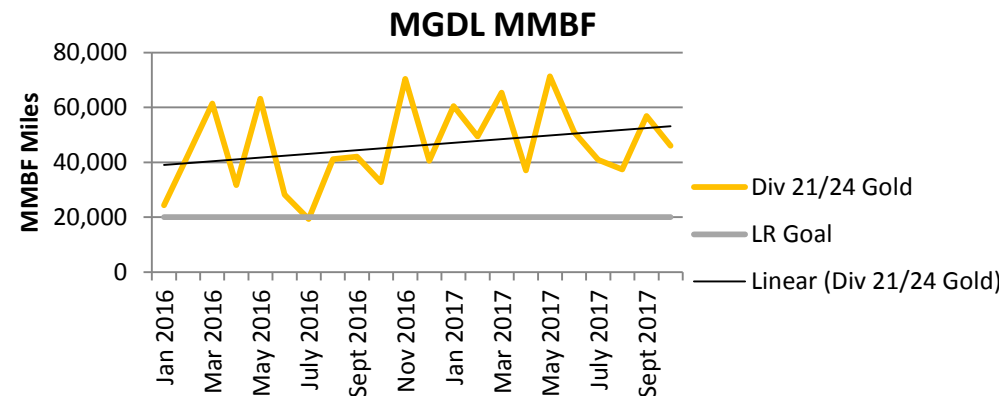
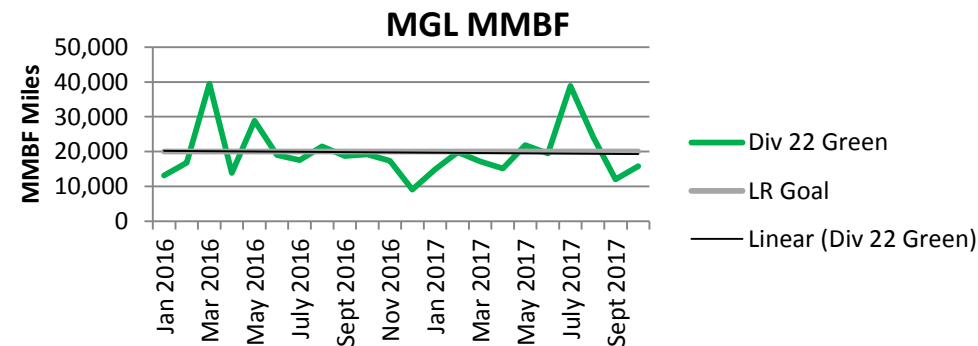
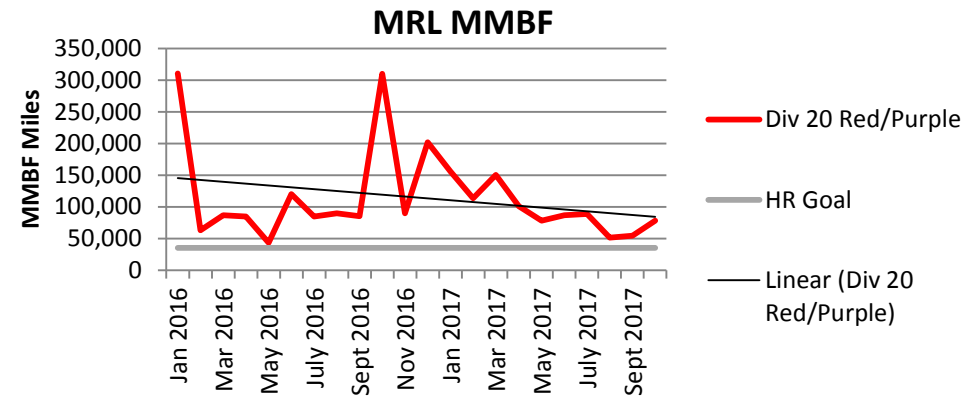


Mean Miles Between Major Failures (all)



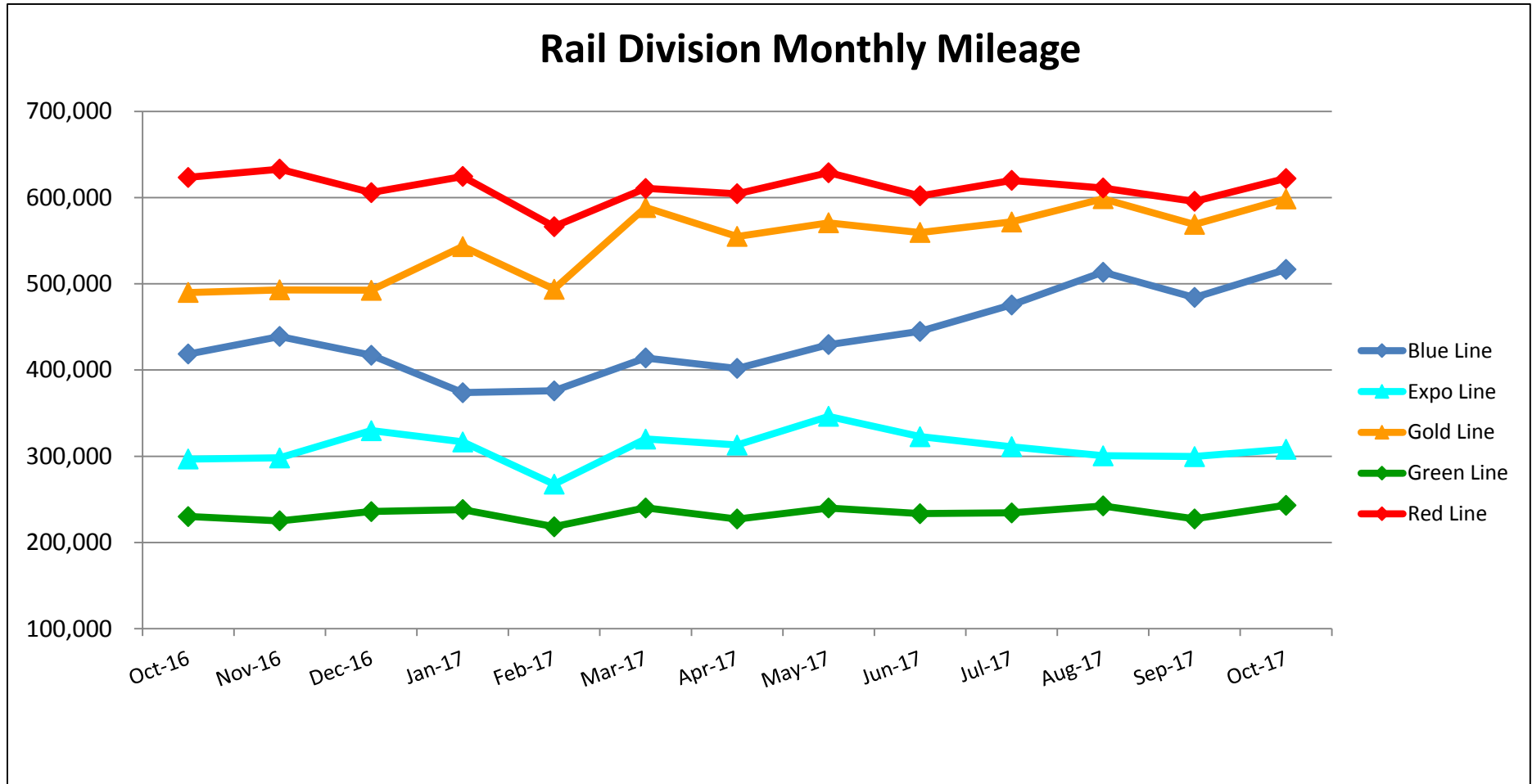
MMBF by Division October 2016-2017

Month	Div 11 Blue	Div 14 Expo	Div 20 Red/Purple	Div 22 Green	Div 21/24 Gold	LR Goal	HR Goal
Jan 2016	20,976	-	310,794	13,075	24,371	20,000	35,000
Feb 2016	14,628	-	62,876	16,751	42,632	20,000	35,000
Mar 2016	16,739	-	86,604	39,513	61,444	20,000	35,000
Apr 2016	23,513	22,195	84,909	13,853	31,658	20,000	35,000
May 2016	28,263	31,044	43,282	28,871	63,137	20,000	35,000
June 2016	16,263	11,289	120,190	19,031	28,184	20,000	35,000
July 2016	17,156	13,173	84,844	17,567	19,271	20,000	35,000
Aug 2016	16,586	28,623	89,920	21,505	41,079	20,000	35,000
Sept 2016	16,651	23,505	85,121	18,725	42,049	20,000	35,000
Oct 2016	22,027	33,606	309,858	19,184	32,664	20,000	35,000
Nov 2016	22,473	29,108	89,953	17,318	70,436	20,000	35,000
Dec 2016	16,198	20,258	201,913	9,073	40,514	20,000	35,000
Jan 2017	13,950	33,309	155,755	14,888	60,522	20,000	35,000
Feb 2017	13,453	38,125	113,266	19,848	49,377	20,000	35,000
Mar 2017	10,615	109,624	150,470	17,159	65,389	20,000	35,000
Apr 2017	16,560	56,983	100,740	15,154	37,001	20,000	35,000
May 2017	17,859	50,277	77,983	21,822	71,340	20,000	35,000
June 2017	16,476	54,697	86,652	19,462	50,865	20,000	35,000
July 2017	14,264	30,542	88,542	38,847	40,846	20,000	35,000
Aug 2017	11,218	19,557	51,282	24,228	37,419	20,000	35,000
Sept 2017	11,914	22,674	54,351	11,972	56,889	20,000	35,000
Oct 2017	16,849	36,544	78,231	15,811	46,044	20,000	35,000



Mileage Between Data Range (by month)

October 2016-2017



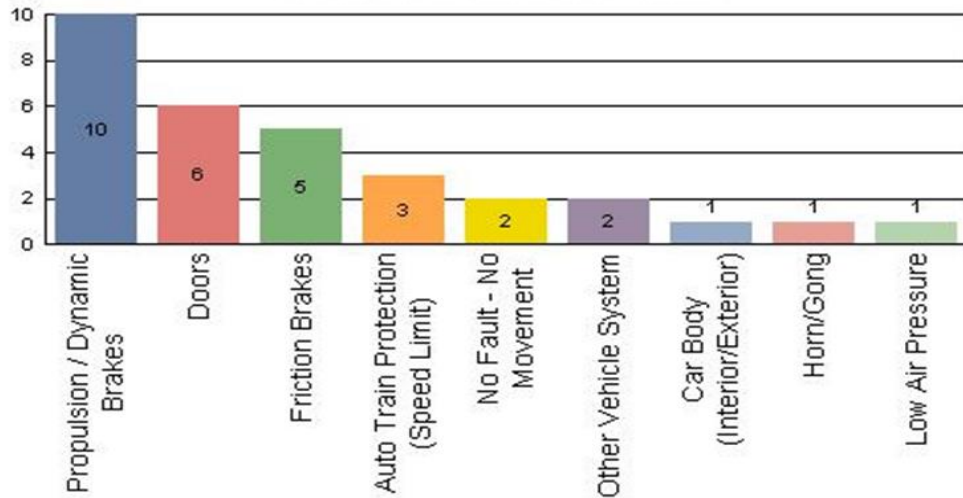
Notes:

- Gold Line increase in mileage is due to the open of the Foothill extension, which includes stations further apart and faster average running speeds.
- With the opening of Division 14 in Santa Monica, the Expo Line mileage is now being reported separately from the Blue Line.

Top Incident Categories October 2017

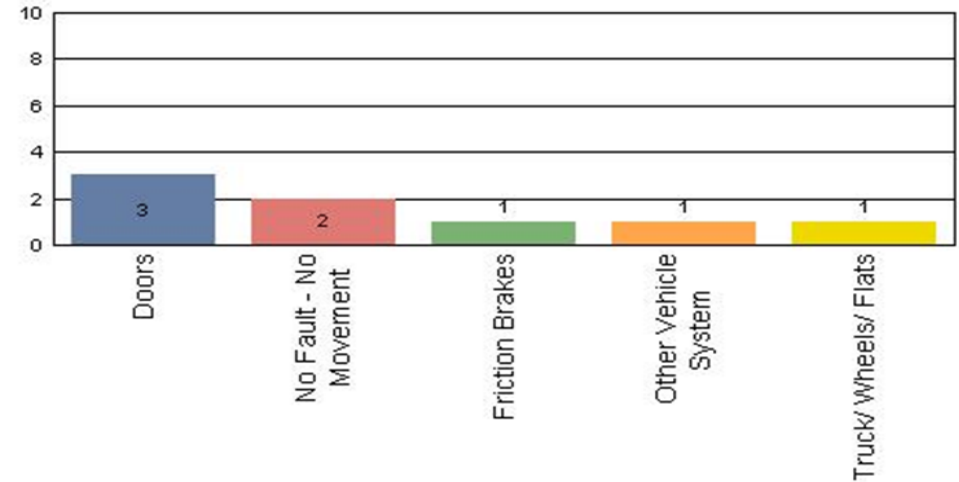
Metro Blue Line (Div 11)

Top Incident Categories



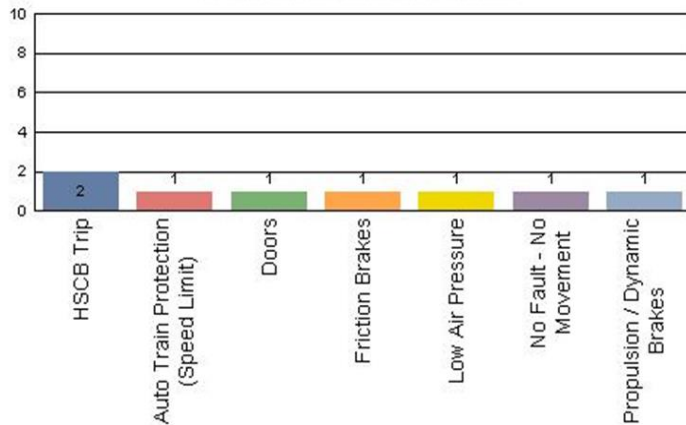
Metro Expo Line (Div 14)

Top Incident Categories



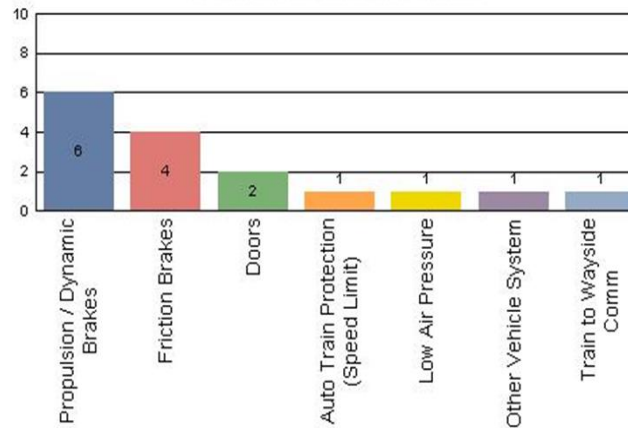
Metro Red/Purple Line (Div 20)

Top Incident Categories



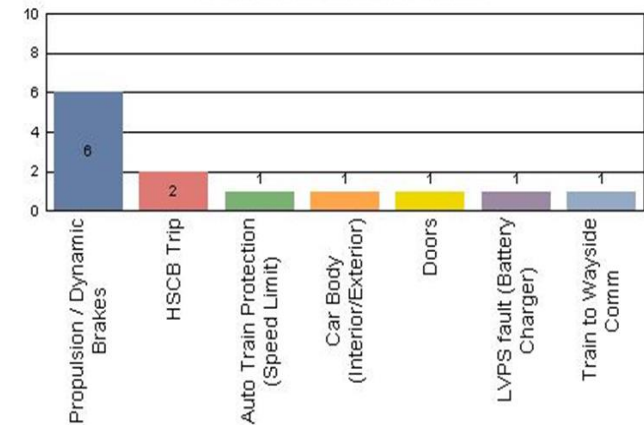
Metro Green Line (Div 22)

Top Incident Categories



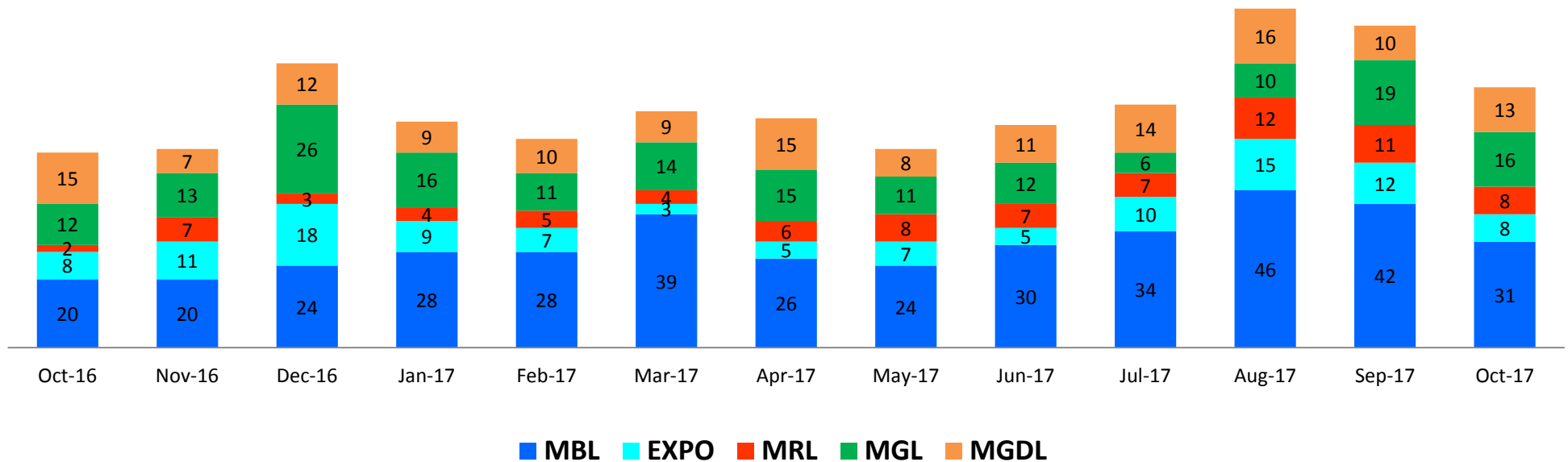
Metro Gold Line (Div 21 & Div 24)

Top Incident Categories



Major Incidents October 2016-2017

Numbers of Major System Failures (by Line)



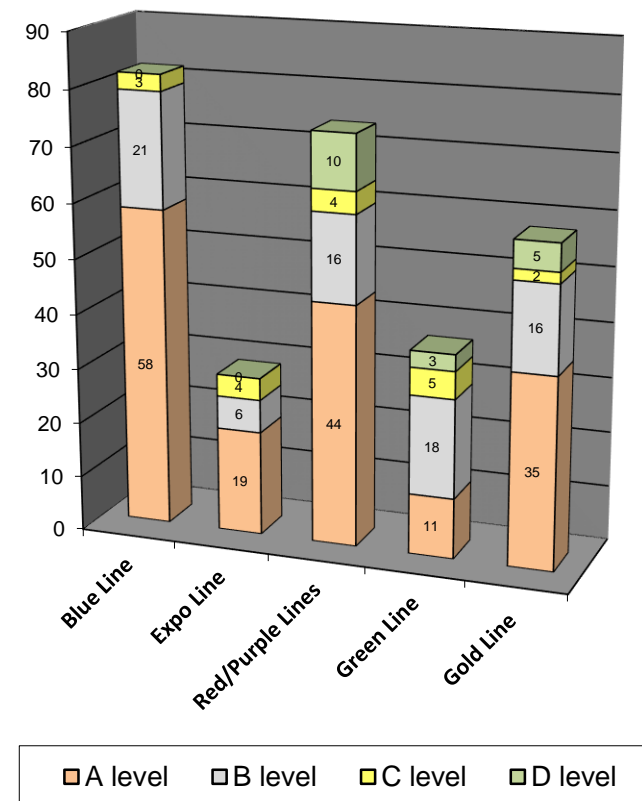
Preventive Maintenance Compliance

October 2016-2017

PM Compliance	Oct-16	Nov-16	Dec-16	Jan-17	Feb-17	Mar-17	Apr-17	May-17	Jun-17	Jul-17	Aug-17	Sep-17	Oct-17
Blue Line	100%	100%	100%	100%	100%	100%	100%	100%	100%	100%	100%	100%	100%
Expo Line	100%	100%	100%	100%	100%	100%	100%	100%	100%	100%	100%	100%	100%
Red/Purple Lines	100%	100%	100%	100%	100%	100%	100%	100%	100%	100%	100%	100%	100%
Green Line	100%	100%	100%	100%	100%	100%	100%	100%	100%	100%	100%	100%	100%
Gold Line	100%	100%	100%	100%	100%	100%	100%	100%	98%	100%	100%	100%	100%

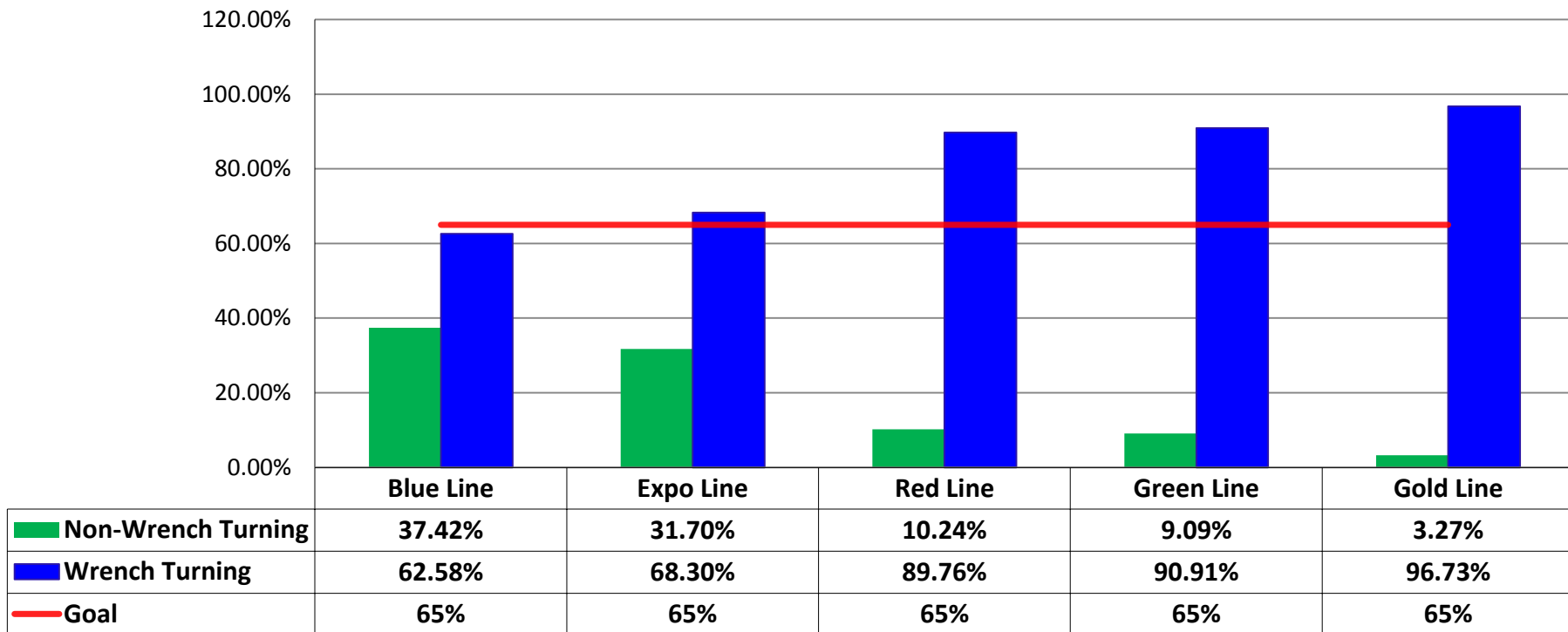
Number of Preventive Maintenance Inspections - October 2017					
Line	A level	B level	C level	D level	Totals
Blue Line	58	21	3	0	82
Expo Line	19	6	4	0	29
Red/Purple Lines	44	16	4	10	74
Green Line	11	18	5	3	37
Gold Line	35	16	2	5	58
Totals:	167	77	18	18	280

Explanation of PM Inspection levels		Miles			
Line	Type	A level	B level	C level	D level
Blue/Expo Lines	P865/P2020	5,000	15,000	30,000	60,000
Blue/Expo Lines	P2000	7,500	22,500	45,000	90,000
Red/Purple Lines	A650	7,500	22,500	45,000	90,000
Green Line	P2000	7,500	22,500	45,000	90,000
Gold Line	P2550	10,000	30,000	60,000	120,000
Gold/Expo Lines	P3010	10,000	30,000	60,000	120,000



RFS Leader Wrench Turning October 2017

RFS - Leader Wrench Turning October 2017



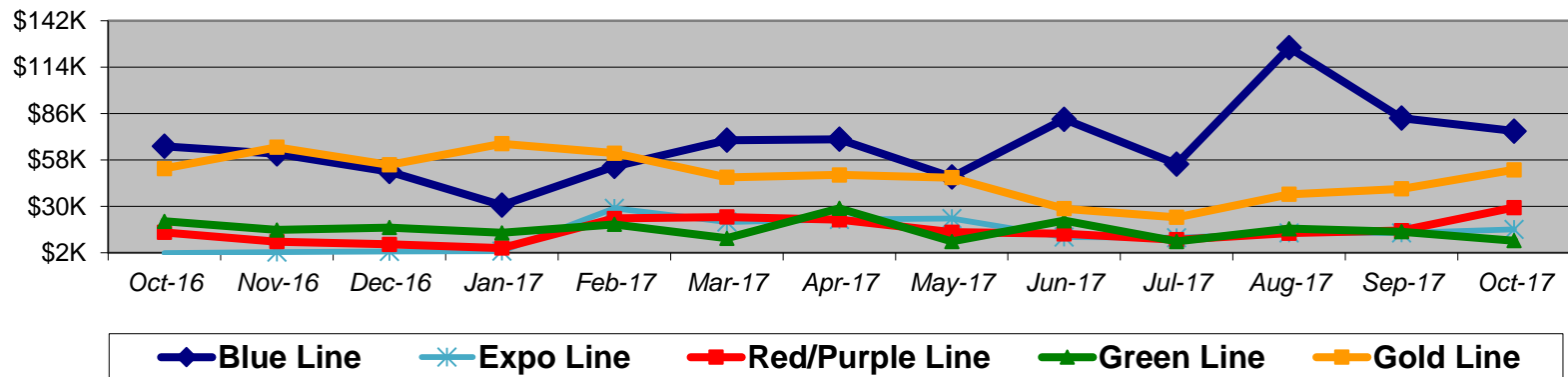
Notes: Labor hours contributed by Maint Specialist Leader, Rail Body/Paint Repair Leader, and Maint Specialist Temporary Leader

Vandalism & Graffiti Report

October 2016-2017

Graffiti Costs

	Oct-16	Nov-16	Dec-16	Jan-17	Feb-17	Mar-17	Apr-17	May-17	Jun-17	Jul-17	Aug-17	Sep-17	Oct-17	13-Month Period
Blue Line	\$66K	\$62K	\$51K	\$31K	\$54K	\$70K	\$71K	\$48K	\$83K	\$56K	\$126K	\$83K	\$75K	\$875K
Expo Line	\$2K	\$2K	\$3K	\$3K	\$29K	\$21K	\$22K	\$23K	\$11K	\$11K	\$14K	\$14K	\$16K	\$172K
Red/Purple Line	\$14K	\$9K	\$7K	\$5K	\$23K	\$24K	\$22K	\$14K	\$13K	\$10K	\$14K	\$15K	\$29K	\$200K
Green Line	\$21K	\$16K	\$17K	\$14K	\$19K	\$11K	\$29K	\$9K	\$21K	\$9K	\$17K	\$15K	\$9K	\$207K
Gold Line	\$53K	\$66K	\$55K	\$68K	\$62K	\$48K	\$49K	\$47K	\$29K	\$23K	\$37K	\$41K	\$52K	\$630K
Totals:	\$157K	\$154K	\$133K	\$121K	\$187K	\$172K	\$193K	\$141K	\$158K	\$109K	\$208K	\$168K	\$182K	\$2,083K



October 2017 Vandalism & Graffiti - All Rail				
	Qty	Labor	Materials	Totals
Windows Replaced	70	\$ 17,363	\$ 30,623	\$ 47,986
Vandal Shields Replaced	951	\$ 33,180	\$ 14,153	\$ 47,333
Seats Cleaned	130	\$ 700	\$ 112	\$ 812
Seats Inserts Replaced	615	\$ 29,603	\$ 23,539	\$ 53,142
Graffiti Removal - Other	1,487	\$ 23,117	\$ 5,432	\$ 28,549
Repainting Panels	129	\$ 4,551	\$ 90	\$ 4,641
Totals	3,382	\$ 108,514	\$ 73,949	\$ 182,463

Vandalism & Graffiti Pictures

October 2017

Blue Line



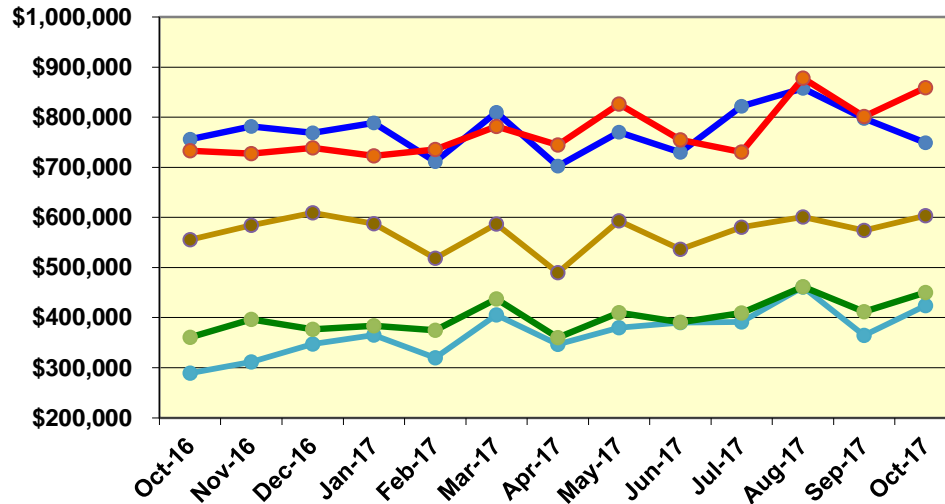
Green Line



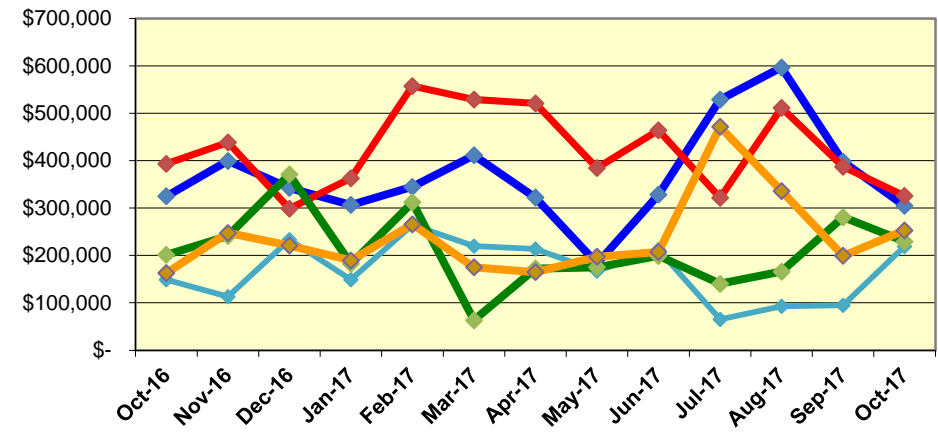
Labor and Material Costs

October 2016-2017

Labor Costs



Material Costs



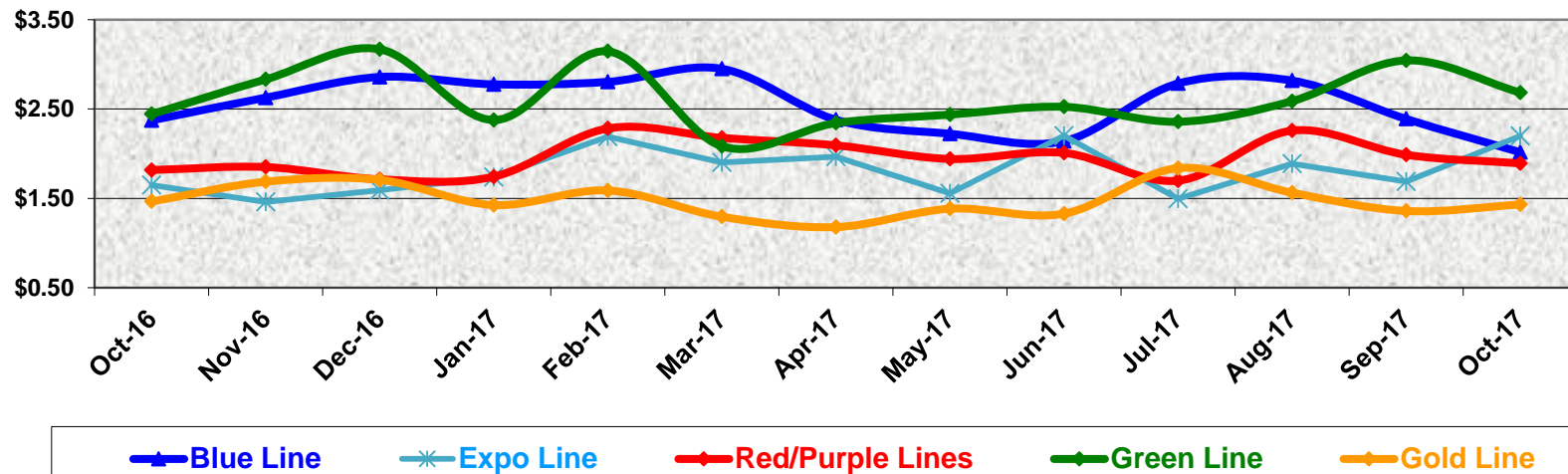
	Oct-16	Nov-16	Dec-16	Jan-17	Feb-17	Mar-17	Apr-17	May-17	Jun-17	Jul-17	Aug-17	Sep-17	Oct-17
Labor Costs													
Blue Line	\$ 755,958	\$ 781,662	\$ 768,756	\$ 788,785	\$ 711,354	\$ 810,012	\$ 702,374	\$ 770,245	\$ 730,183	\$ 822,077	\$ 857,616	\$ 797,683	\$ 749,009
Expo Line	\$ 289,213	\$ 311,627	\$ 347,280	\$ 365,354	\$ 320,019	\$ 405,656	\$ 346,398	\$ 379,871	\$ 389,878	\$ 391,095	\$ 461,075	\$ 364,430	\$ 423,859
Red/Purple Lines	\$ 733,202	\$ 727,093	\$ 738,672	\$ 723,038	\$ 735,394	\$ 781,595	\$ 744,460	\$ 826,461	\$ 754,862	\$ 730,783	\$ 878,453	\$ 801,722	\$ 858,679
Green Line	\$ 360,963	\$ 396,278	\$ 376,933	\$ 383,591	\$ 374,747	\$ 437,154	\$ 360,314	\$ 410,146	\$ 390,662	\$ 409,313	\$ 461,320	\$ 411,714	\$ 449,839
Gold Line	\$ 555,213	\$ 584,203	\$ 609,215	\$ 587,313	\$ 518,524	\$ 586,949	\$ 489,634	\$ 593,070	\$ 536,404	\$ 580,341	\$ 600,583	\$ 574,080	\$ 603,761
Totals	\$ 2,694,548	\$ 2,800,863	\$ 2,840,856	\$ 2,848,080	\$ 2,660,038	\$ 3,021,365	\$ 2,643,180	\$ 2,979,794	\$ 2,801,989	\$ 2,933,607	\$ 3,259,046	\$ 2,949,629	\$ 3,085,146

Material Costs													
Blue Line	\$ 324,999	\$ 399,427	\$ 342,695	\$ 306,710	\$ 344,931	\$ 411,541	\$ 322,424	\$ 182,846	\$ 328,206	\$ 529,007	\$ 596,865	\$ 397,951	\$ 304,627
Expo Line	\$ 148,670	\$ 113,229	\$ 233,001	\$ 149,260	\$ 264,561	\$ 219,980	\$ 213,435	\$ 167,428	\$ 212,682	\$ 65,432	\$ 93,233	\$ 94,730	\$ 218,980
Red/Purple Lines	\$ 393,507	\$ 438,480	\$ 299,157	\$ 363,192	\$ 557,616	\$ 528,820	\$ 521,242	\$ 384,776	\$ 463,957	\$ 321,863	\$ 511,576	\$ 386,990	\$ 325,604
Green Line	\$ 201,438	\$ 241,344	\$ 370,755	\$ 182,518	\$ 312,113	\$ 63,371	\$ 172,269	\$ 174,969	\$ 199,040	\$ 140,168	\$ 165,820	\$ 280,752	\$ 229,311
Gold Line	\$ 162,899	\$ 247,842	\$ 221,172	\$ 189,520	\$ 265,930	\$ 175,047	\$ 165,012	\$ 197,220	\$ 207,555	\$ 471,378	\$ 336,025	\$ 199,318	\$ 253,138
Totals	\$ 1,231,513	\$ 1,440,322	\$ 1,466,779	\$ 1,191,200	\$ 1,745,150	\$ 1,398,760	\$ 1,394,383	\$ 1,107,239	\$ 1,411,440	\$ 1,527,848	\$ 1,703,519	\$ 1,359,742	\$ 1,331,660

Cost Per Mile October 2016-2017

Cost per mile:	Oct-16	Nov-16	Dec-16	Jan-17	Feb-17	Mar-17	Apr-17	May-17	Jun-17	Jul-17	Aug-17	Sep-17	Oct-17	Average
Blue Line	\$2.37	\$2.63	\$2.86	\$2.78	\$2.80	\$2.95	\$2.38	\$2.22	\$2.14	\$2.79	\$2.82	\$2.39	\$2.02	\$2.55
Expo Line	\$1.65	\$1.46	\$1.59	\$1.74	\$2.19	\$1.90	\$1.96	\$1.56	\$2.20	\$1.49	\$1.89	\$1.69	\$2.20	\$1.81
Red/Purple Lines	\$1.82	\$1.85	\$1.71	\$1.74	\$2.28	\$2.18	\$2.09	\$1.94	\$2.01	\$1.70	\$2.26	\$1.99	\$1.89	\$1.96
Green Line	\$2.44	\$2.83	\$3.17	\$2.38	\$3.15	\$2.08	\$2.34	\$2.44	\$2.52	\$2.36	\$2.59	\$3.04	\$2.68	\$2.62
Gold Line	\$1.47	\$1.69	\$1.71	\$1.43	\$1.59	\$1.29	\$1.18	\$1.38	\$1.33	\$1.84	\$1.56	\$1.36	\$1.43	\$1.48

Cost per Mile



ATU Absences vs. Overtime

October 2017

ABSENCE TYPE and HOURS	3941 Blue	3947 Expo	3942 Red	3943 Green	3944 Gold	3948 Monrovia	Total
AWP-ABSENT W/O PERMISSION	-	-	2	8	-	-	10
BER-BEREAVEMENT	-	24	-	24	24	24	96
CTO-COMPENSATORY TIME OFF	235	211	230	104	10	168	958
CUT-EMPLOYEE LEAVES EARLY	0	1	-	0	-	1	1
DSL-DISABILITY LEAVE/LONG	240	-	168	528	-	-	936
EFH-EMG. FLOAT HOL.	32	32	40	24	16	32	176
ETO-EXCUSED TIME OFF	66	74	58	10	33	35	274
FMI-FAM IND INJURY	-	-	-	168	-	-	168
FML-FAMILY CARE LEAVE	160	120	816	191	96	248	1,631
FMS-FAMILY LEAVE SICK	96	24	207	54	-	120	502
HLF-HOLIDAY FLOATING	396	256	168	224	48	224	1,316
II-INDUSTRIAL INJURY	8	-	-	-	-	-	8
JUR-JURY DUTY	8	-	-	-	-	-	8
LC1-LABOR CODE 233	160	36	155	104	16	92	563
LTI-OCCPIL/LONGTRM INJ LEAVE	336	80	344	352	-	-	1,112
MLN-MILITARY ABSENCE-UNPAID	8	-	176	-	-	-	184
OWP-OFF WITH PERMISSION	-	4	-	-	-	8	12
RTO-REQUESTED TIME OFF-NO PAY	16	-	8	-	-	-	24
SCK-SICK PAY	209	180	304	76	156	152	1,076
SCW-SICK WITHOUT PAY	56	76	-	64	16	40	252
TAR-TARDY	4	1	4	3	0	0	12
UB-UNION BUSINESS	-	-	-	-	-	40	40
UNP-UNION BUS PAID	-	8	-	-	-	-	8
VAC-VACATION	1,289	381	1,464	588	260	704	4,685
VAS-VACATION WHILE SICK	-	-	-	-	-	24	24
*TRAINING	348	67	33	84	-	326	858
Total Absence Hours	3,666	1,574	4,176	2,606	674	2,237	14,934
**ATU Number of Work Force (active)	106	41	106	45	17	60	375
Full Work Force hours/month	18,370	7,105	18,370	7,799	2,946	10,400	64,988
Absence as a % of Work Force	20%	22%	23%	33%	23%	22%	23%

OVERTIME TYPE and HOURS	3941 Blue	3947 Expo	3942 Red	3943 Green	3944 Gold	3948 Monrovia	Total
CTB-COMPENSATORY TIME TO BANK	207	56	151	125	2	176	717
OTP-PREM OVERTIME	4,049	2,053	4,419	2,332	53	1,272	14,179
WLO-Worked Lunch Overtime	140	158	270	101	29	91	788
Total Overtime Hours	4,396	2,267	4,840	2,558	84	1,539	15,684
Overtime as a % of Work Force	24%	32%	26%	33%	3%	15%	24%

*Training hours captured by Instruction Department are added to Absences Report.

**ATU Employee Numbers from ATU Manpower Status Report (last week of the month)

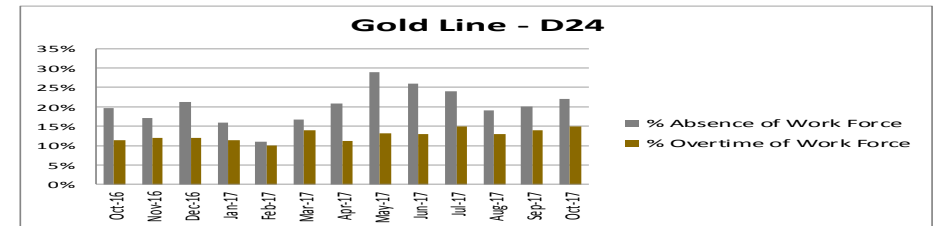
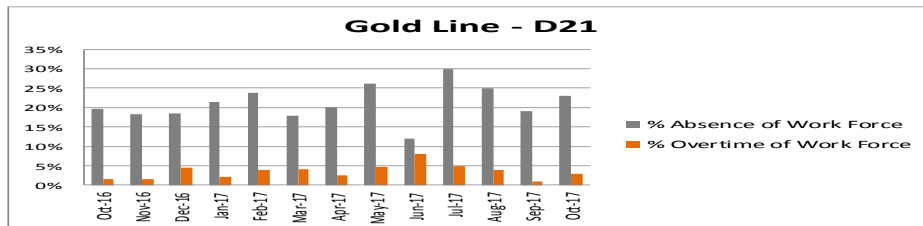
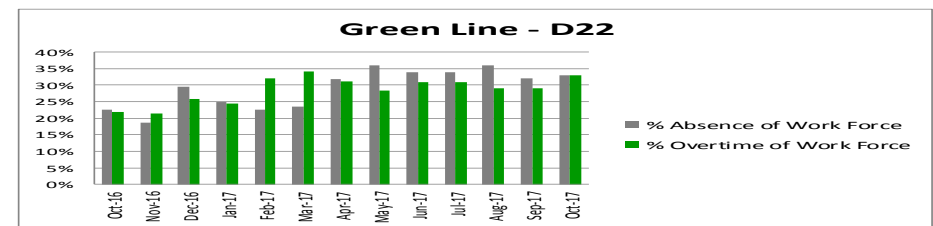
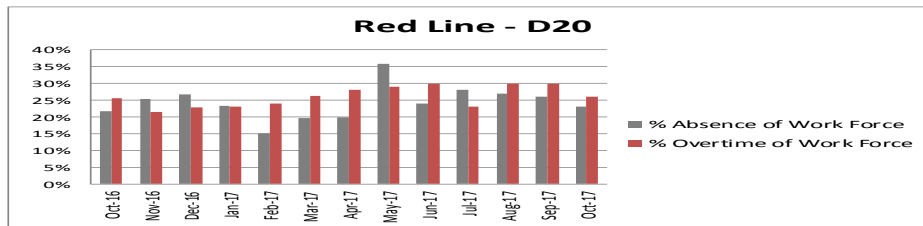
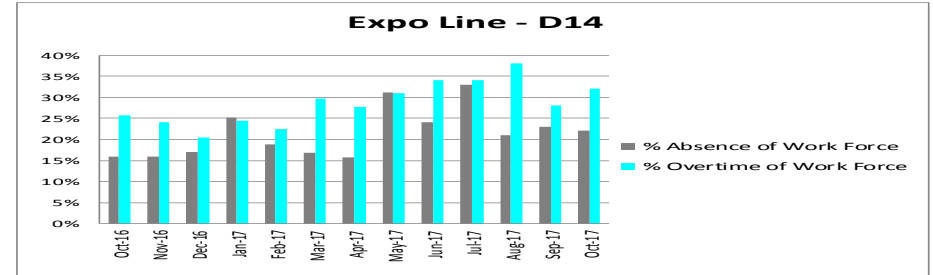
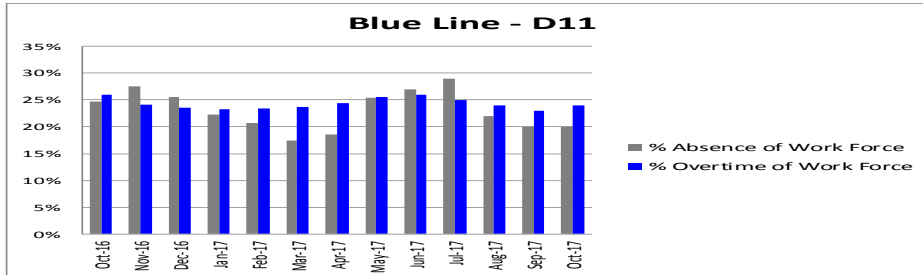


Metro

Note: Overtime also covers other required activities, including Training, Component Overhaul, and Special Events.

ATU - %Absence & %Overtime of Work Force

October 2016 - 2017



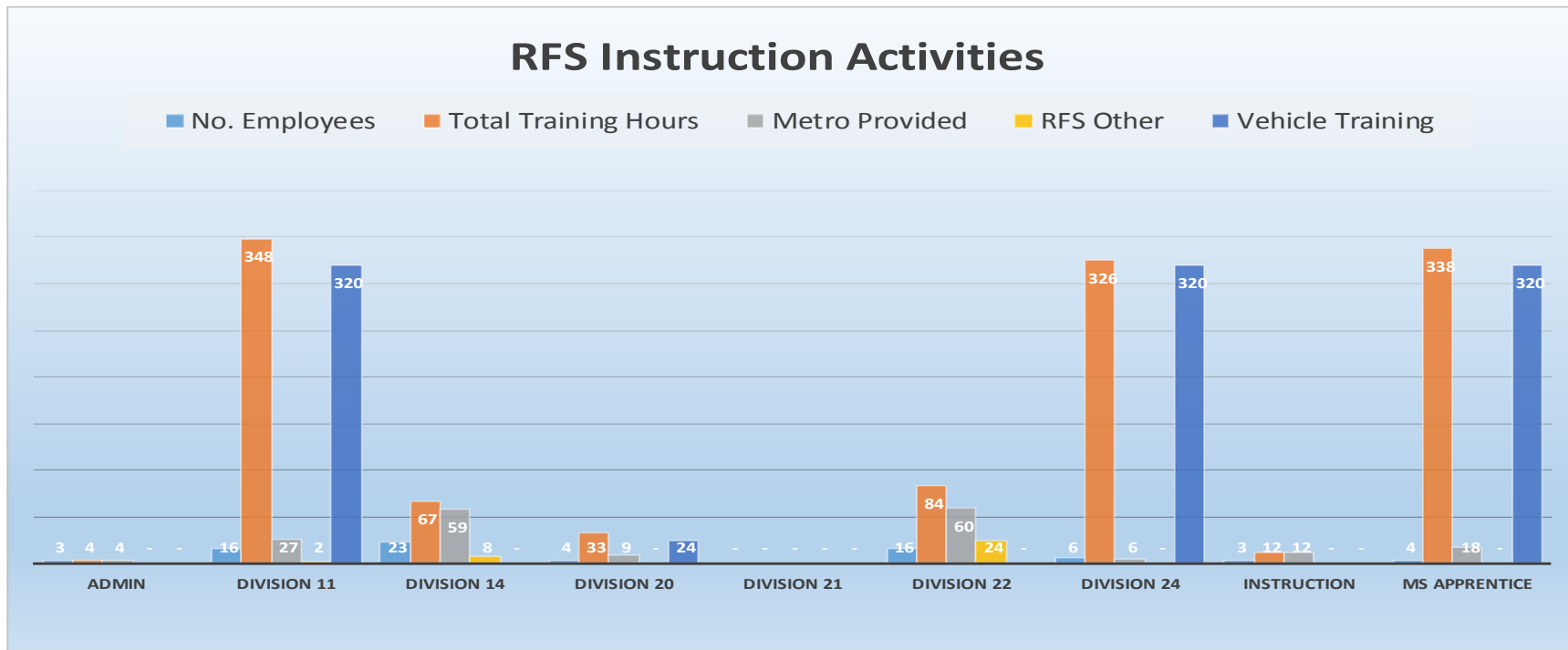
% Absence of Work Force	Oct-16	Nov-16	Dec-16	Jan-17	Feb-17	Mar-17	Apr-17	May-17	Jun-17	Jul-17	Aug-17	Sep-17	Oct-17	13-Month Average
Blue Line D11	25%	28%	26%	22%	21%	17%	19%	25%	27%	29%	22%	20%	20%	23%
Expo Line D14	16%	16%	17%	25%	19%	17%	16%	31%	24%	33%	21%	23%	22%	22%
Red Line D20	22%	25%	27%	23%	15%	20%	20%	36%	24%	28%	27%	26%	23%	24%
Green Line D22	23%	19%	30%	25%	23%	24%	32%	36%	34%	34%	36%	32%	33%	29%
Gold Line D21	20%	18%	18%	21%	24%	18%	20%	26%	12%	30%	25%	19%	23%	21%
Gold Line D24	20%	17%	21%	16%	11%	17%	21%	29%	26%	24%	19%	20%	22%	20%

% Overtime of Work Force	Oct-16	Nov-16	Dec-16	Jan-17	Feb-17	Mar-17	Apr-17	May-17	Jun-17	Jul-17	Aug-17	Sep-17	Oct-17	13-Month Average
Blue Line D11	26%	24%	24%	23%	23%	24%	24%	26%	26%	25%	24%	23%	24%	24%
Expo Line D14	26%	24%	20%	24%	22%	30%	28%	31%	34%	34%	38%	28%	32%	29%
Red Line D20	26%	21%	23%	23%	24%	26%	28%	29%	30%	23%	30%	30%	26%	26%
Green Line D22	22%	21%	26%	25%	32%	34%	31%	28%	31%	31%	29%	29%	33%	29%
Gold Line D21	2%	2%	5%	2%	4%	4%	2%	5%	2%	5%	4%	1%	3%	3%
Gold Line D24	11%	12%	12%	11%	10%	14%	11%	13%	13%	15%	13%	14%	15%	13%

RFS Instruction Department Activities October 2017

RFS Training Hours - October 2017

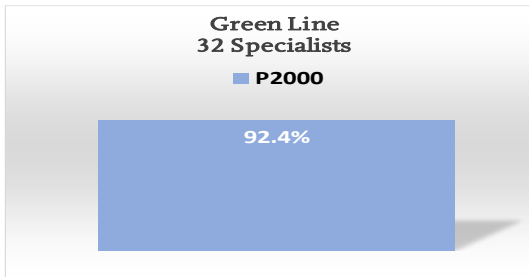
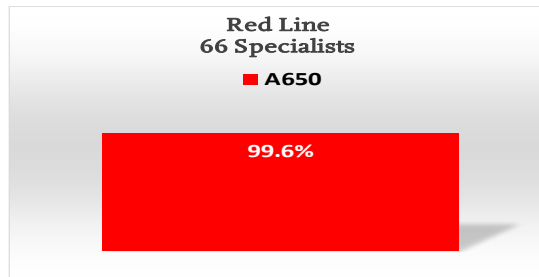
Team	No. Employees	Total Training Hours	Metro Provided	RFS Other	Vehicle Training
Admin	3	4	4	-	-
Division 11	16	348	27	2	320
Division 14	23	67	59	8	-
Division 20	4	33	9	-	24
Division 21	-	-	-	-	-
Division 22	16	84	60	24	-
Division 24	6	326	6	-	320
Instruction	3	12	12	-	-
MS Apprentice	4	338	18	-	320
Grand Total	75	1,211	194	34	984



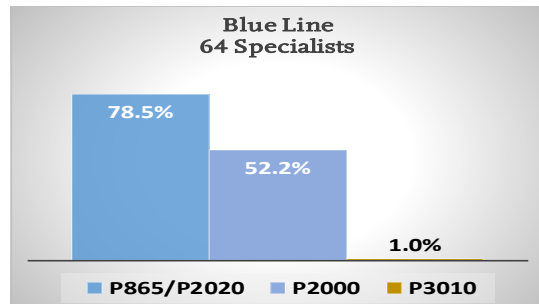
RFS Instruction Department Activities

October 2017

RFS Specialist Training Status October 2017



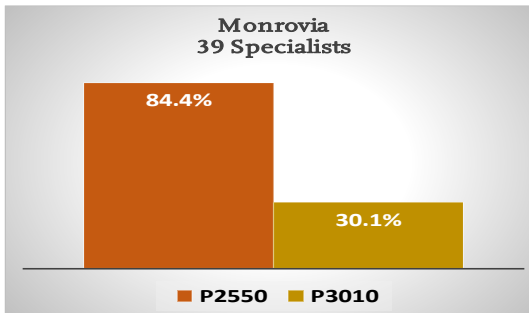
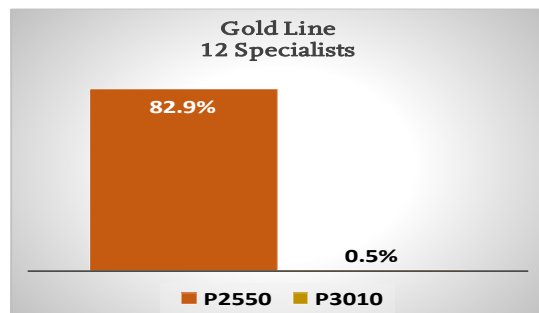
Red Line	66 Specialists
Average Experience	13.5 Years
A650	99.6% Training Complete



Green Line	32 Specialists
Average Experience	10.2 Years
P2000	92.4% Training Complete

Blue Line	64 Specialists
Average Experience	15.1 Years
P865/P2020	78.5% Training Complete
P2000	52.2% Training Complete
P3010	1.0% Training Complete

Expo Line	27 Specialists
Average Experience	4.1 Years
P865/P2020	21.3% Training Complete
P2000	39.8% Training Complete
P3010	39.4% * Becoming single fleet



Gold Line	12 Specialists
Average Experience	6.1 Years
P2550	82.9% Training Complete
P3010	0.5% Training Complete

Gold Line - Monrovia	39 Specialists
Average Experience	8.3 Years
P2550	84.4% Training Complete
P3010	30.1% Training Complete

* SHIFT IN NUMBERS REPRESENT THE MOVEMENT OF EMPLOYEES WITH LESS EXPERIENCE AND TRAINING, SUCH AS APPRENTICES MOVING TO THE MAINTENANCE SPECIALIST LEVEL