



Rail Fleet Services Monthly Report September 2017

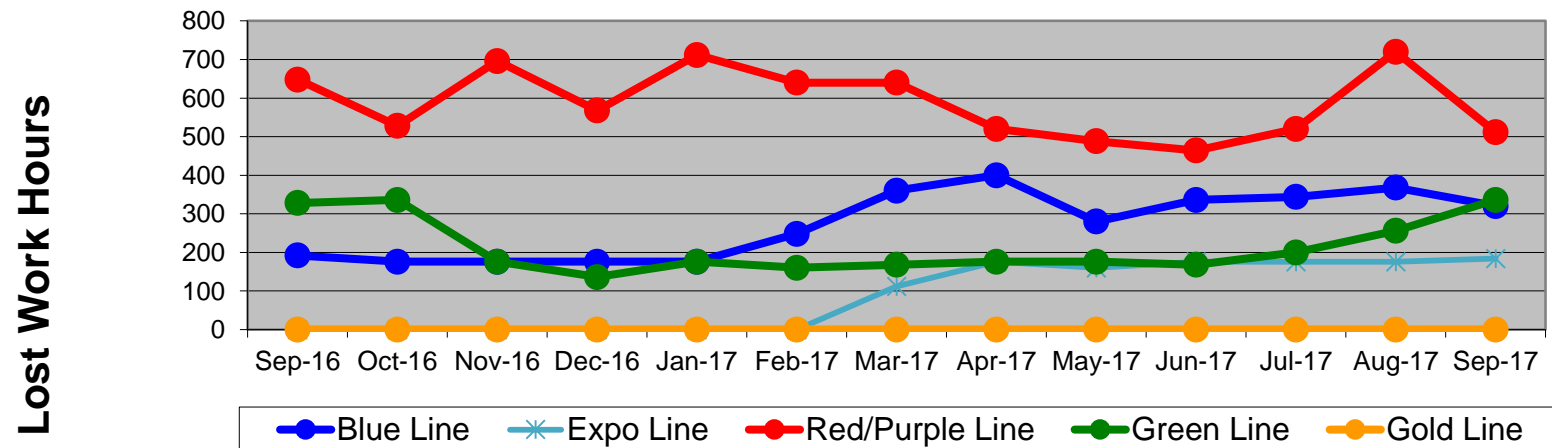
Table of Contents

•	Safety & Cleanliness		
	- Industrial Injuries	Page	3
	- Rail Vehicle Accidents & Major Incidents	Page	4
	- Car Cleanliness	Page	5
•	Customer Service		
	- Service Delivery – AM/PM Pull-Outs	Page	6
	- Vehicle Utilization – Red Line	Page	7
	- Vehicle Utilization – Blue Line & Expo Line	Page	8
	- Vehicle Utilization – Green Line & Gold Line	Page	9
	- All Train Delay Incidents	Page	10
	- Mean Miles Between Failures (Major) & MMBF by Division	Page	11-12
	- Mileage Between Data Range (by month)	Page	13
•	Business Processes		
	- Top Incident Categories	Page	14
	- Major Incidents	Page	15
	- Preventive Maintenance Compliance	Page	16
	- RFS Leader Wrench Turning	Page	17
•	Finance		
	- Vandalism & Graffiti Costs	Page	18
	- Vandalism & Graffiti Pictures	Page	19
	- Labor & Material Costs	Page	20
	- Cost per mile	Page	21
	- Absence vs. Overtime/ %Absence and %Overtime of ATU	Page	22-23
•	Growth		
	- RFS Instruction Department Activities	Page	24-25

Industrial Injuries – Lost Work Hours September 2016-2017

	Sep-16	Oct-16	Nov-16	Dec-16	Jan-17	Feb-17	Mar-17	Apr-17	May-17	Jun-17	Jul-17	Aug-17	Sep-17	13-Month Period
Blue Line	192	176	176	176	176	248	360	400	280	336	344	368	320	3,552
Expo Line	0	0	0	0	0	0	112	176	160	176	176	176	184	1,160
Red/Purple Line	648	528	696	568	712	640	640	520	488	464	520	720	512	7,656
Green Line	328	336	176	136	176	160	168	176	176	168	200	256	336	2,792
Gold Line	0	0	0	0	0	0	0	0	0	0	0	0	0	0
Totals	1,168	1,040	1,048	880	1,064	1,048	1,280	1,272	1,104	1,144	1,240	1,520	1,352	15,160

Industrial Injuries (lost work hours)



Rail Vehicle Accidents & Major Incidents

September 2016-2017

Repair Costs	Sep-16	Oct-16	Nov-16	Dec-16	Jan-17	Feb-17	Mar-17	Apr-17	May-17	Jun-17	Jul-17	Aug-17	Sep-17	13-Month Period
Blue Line	\$665	\$28,089	\$0	\$2,352	\$170,311	\$0	\$1,427	\$2,586	\$0	\$15,084	\$632	\$268	\$3,683	\$225,097
Expo Line	\$12,921	\$9,468	\$0	\$381	\$763	\$1,930	\$0	\$1,420	\$0	\$0	\$0	\$191	\$0	\$27,074
Red/Purple Line	\$0	\$0	\$0	\$0	\$0	\$1,032	\$0	\$0	\$0	\$0	\$0	\$0	\$0	\$1,032
Green Line	\$0	\$0	\$0	\$0	\$0	\$0	\$0	\$334	\$0	\$0	\$0	\$0	\$0	\$334
Gold Line	\$0	\$5,694	\$0	\$0	\$3,789	\$15,829	\$1,871	\$191	\$2,692	\$0	\$0	\$0	\$1,343	\$31,409
Totals	\$13,586	\$43,251	\$0	\$2,733	\$174,863	\$18,791	\$3,298	\$4,531	\$2,692	\$15,084	\$632	\$459	\$5,026	\$284,946

Rail Vehicle Accident Costs - September 2017				
Date	Incident #	Problem Code	Incident Description	Repair Cost
Metro Blue Line				
9/14/17	2911252	Derailment	A 10-75 was reported at the Blue Line Yard.	\$ 927
9/18/17	2912143	Train vs. Vehicle	A 10-73 was reported at 4th St. and Long Beach Blvd., Track 2, SB. Due to automobile making illegal left turn.	\$ 631
9/29/17	2916759	Train vs. Pedestrian	A 10-72 was reported at Wardlow, Track 1, NB.	\$ 2,125
Metro Blue Line Total				\$ 3,683
Metro Expo Line				
9/15/17	2911574	Train vs. Vehicle	A 10-73 was reported at Colorado and 14th St., Track 3, NB.	\$ -
Metro Expo Line Total				\$ -
Metro Gold Line				
9/22/17	2914030	Train vs. Vehicle	A 10-73 was reported at 3rd and La Verne, Track 2, SB.	\$ 1,343
Metro Gold Line Total				\$ 1,343
Metro Red Line				
9/20/17	2913360	Train vs. Object	A 10-71 was reported. Train and RFS motorized cart.	\$ -
Metro Red Line Total				\$ -
Grand Total				\$ 5,026
10-71 = Train vs. Object/ 10-72 = Train vs. Pedestrian/ 10-73 = Train vs. Vehicle/ 10-74 = Train vs. MTA Vehicle/ 10-75 = Derailment				

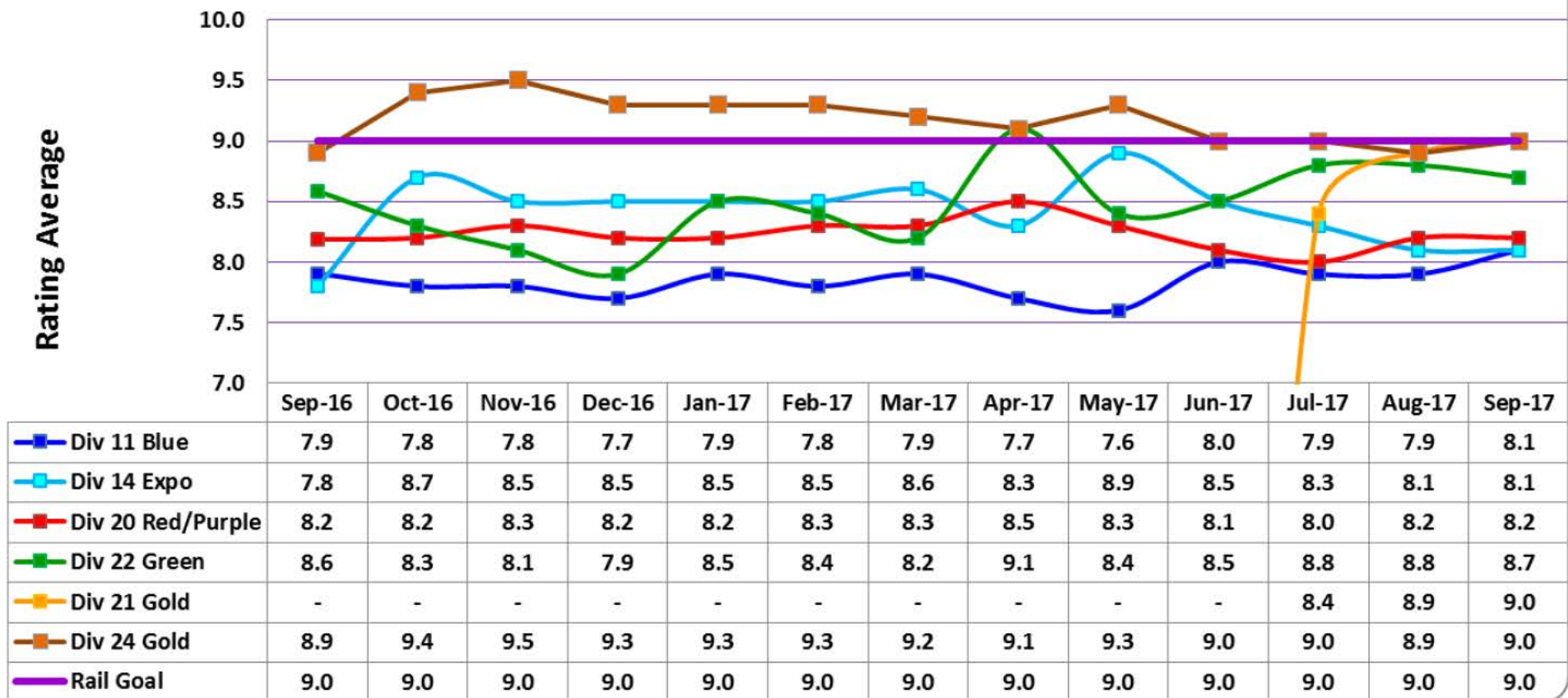


Note: Repair costs are only the expenses captured during the time period of the report. Actual costs may be significantly higher, if repairs are spread out over several months.

Metro

Rail Vehicle – Car Cleanliness September 2016-2017

Car Cleanliness Monthly Report



Service Delivery September 2017

Blue Line Fleet Size: 99

<u>Pull Out</u>	<u>Vehicles Required</u>	<u>Average Available</u>	<u>% Up (Down)</u>
*Weekday:	72	72	100%
Weekend:	26	55	212%

Monthly Mileage: 500,367

Expo Line Fleet Size: 56

<u>Pull Out</u>	<u>Vehicles Required</u>	<u>Average Available</u>	<u>% Up (Down)</u>
Weekday:	42	43	102%
Weekend:	30	42	140%

Monthly Mileage: 272,083

Red/Purple Line Fleet Size: 100

<u>Pull Out</u>	<u>Vehicles Required</u>	<u>Average Available</u>	<u>% Up (Down)</u>
Weekday:	64	72	113%
Weekend:	40	62	155%

Monthly Mileage: 597,858

Green Line Fleet Size: 30

<u>Pull Out</u>	<u>Vehicles Required</u>	<u>Average Available</u>	<u>% Up (Down)</u>
Weekday:	22	23	105%
Weekend:	14	18	129%

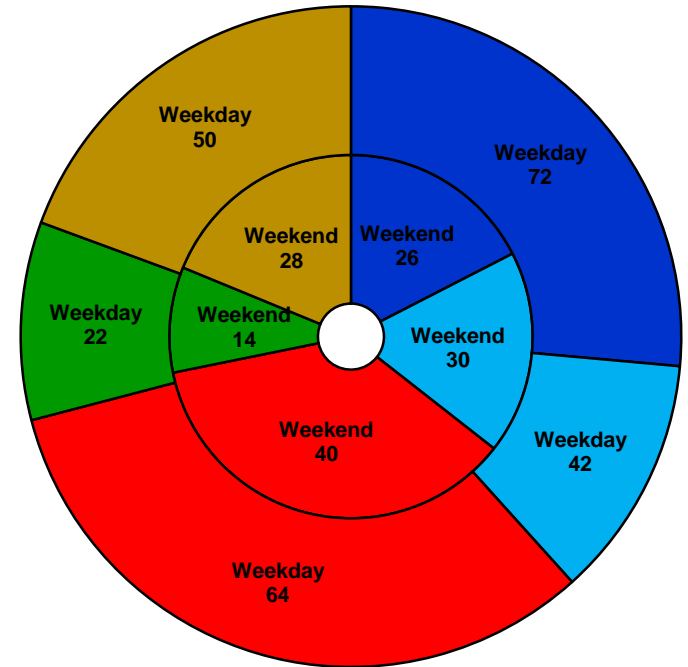
Monthly Mileage: 227,468

Gold Line Fleet Size: 65

<u>Pull Out</u>	<u>Vehicles Required</u>	<u>Average Available</u>	<u>% Up (Down)</u>
Weekday (Div 21):	10	10	100%
Weekday (Div 24):	40	43	108%
Weekend (Div 24):	28	42	150%

***Monthly Mileage: 568,891**

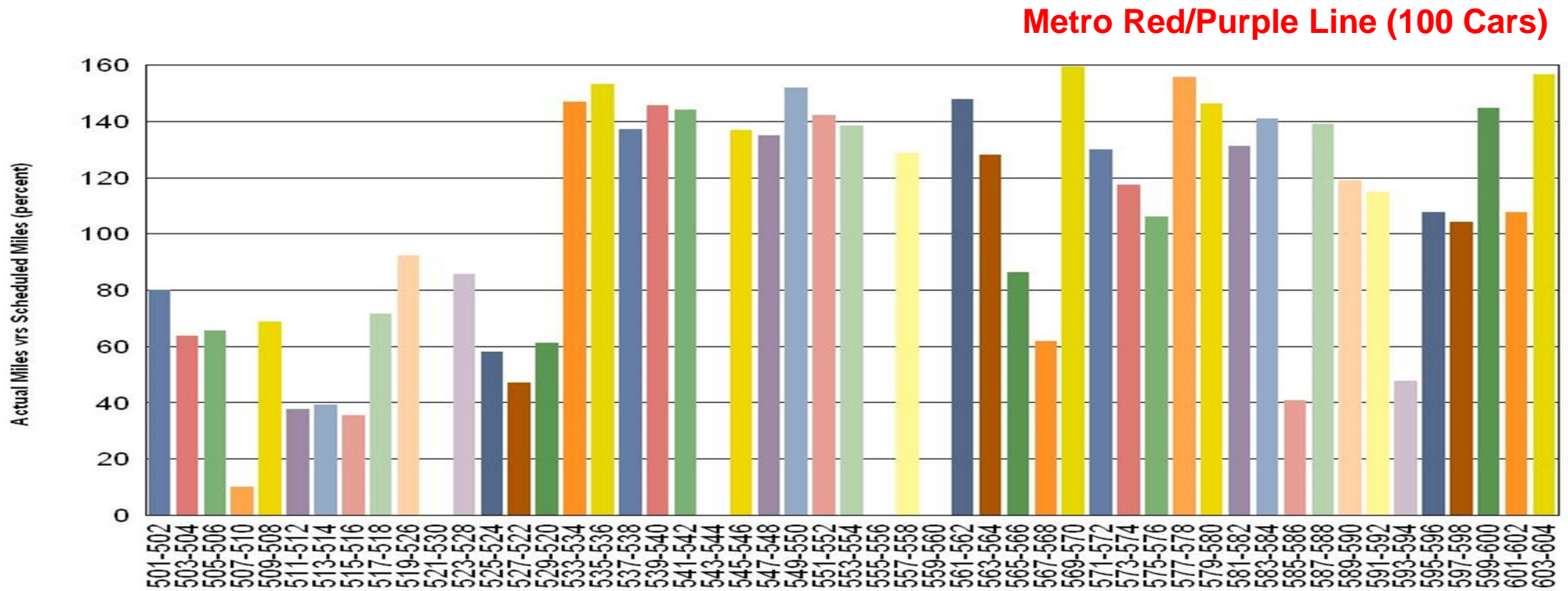
*** Gold Line monthly mileage includes Division 21 and 24.**



■ Blue Line
 ■ Expo Line
 ■ Red/Purple Line
 ■ Green Line
 ■ Gold Line

NOTES: Standby trains not included in vehicle requirements

Vehicle Utilization September 2017



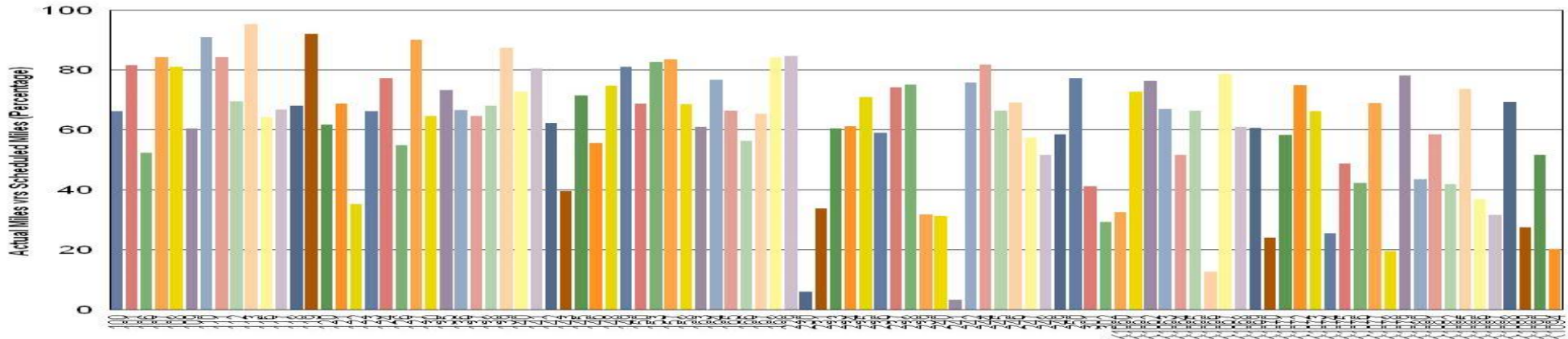
Red/Purple Line:

The following cars were out of service due to:

- Car # 507-510** – Propulsion Problem
- Car # 511-512** – Propulsion Problem CB1 Trip
- Car # 513-514** – Propulsion Problem
- Car # 515-516** – Propulsion Problem CB1 Trip
- Car # 521-530** – Auxiliary Power Problem
- Car # 543-544** – Interior Renovation Program
- Car # 555-556** – Shipped to Talgo on 9/23/2017 for A650 Midlife Overhaul
- Car # 559-560** – Propulsion Problem, Component Overhaul

Vehicle Utilization September 2017

Metro Blue Line (99 Cars)



Blue Line: The following cars were out of service due to:

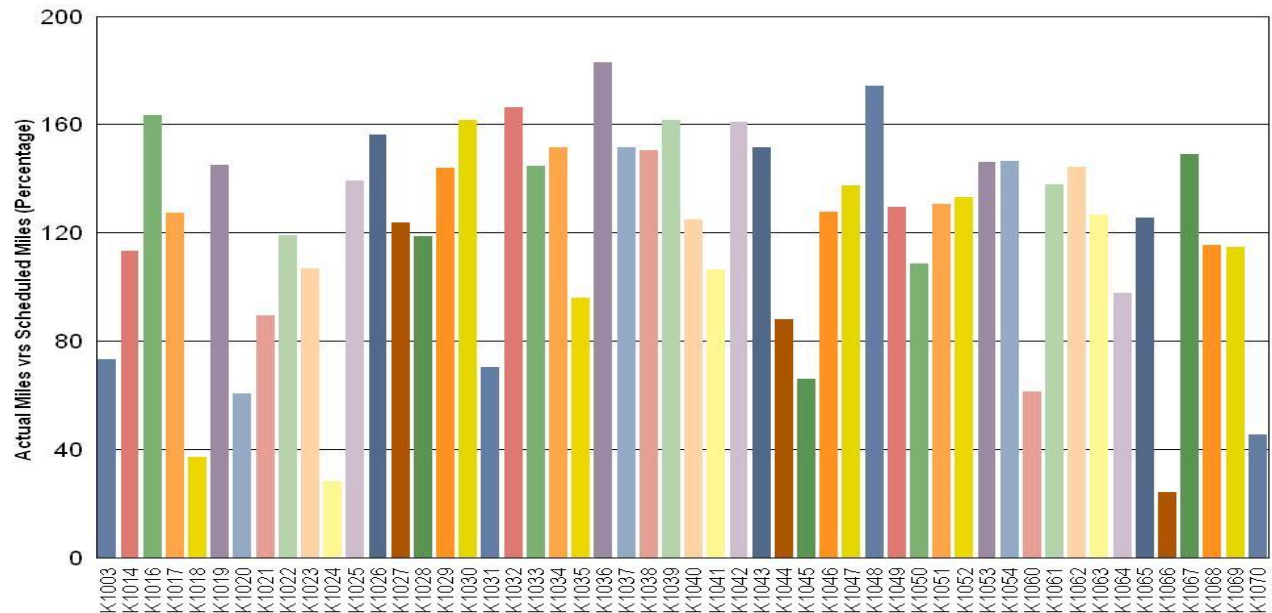
- Car # 122 – Decommissioned Vehicle
- Car # 230 – Exterior Paint Restoration
- Car # 231 – A-end Propulsion Fault
- Car # 239 – Friction Brake / Door OH
- Car # 240 – Exterior Paint Restoration
- Car # 241 – Component Overhaul
- Car # 302 – APS Issue
- Car # K1060 – No Movement/No Indication
- Car # K1066 – Broken Window Repair
- Car # K1070 – HVAC Fault / KI Modifications
- Car # K1074 – 10K Inspection / APS Issue / ATP Issue
- Car # K1078 – 10K Inspection / Work Orders
- Car # K1086 – QA Inspection / Work Orders
- Car # K1087 – HVAC Water Leak / Communication Issue
- Car # K1089 – Arrived at Division 11 on 9/26/2017
- Car # K1094 – Arrived at Division 11 on 9/26/2017

Expo Line: The following cars were out of service due to:

- Car # K1018 – T/ Mtr Bolt Investigation R/R
- Car # K1024 – BCU Box Damaged (10-73 Accident)
- Car # K1066 – Doors / Intermittent Prop Issue



Metro Expo Line (56 Cars)



Note: Percentage includes an average 4% mileage deduction for yard mileage and vehicle testing.

Vehicle Utilization September 2017

Green Line:

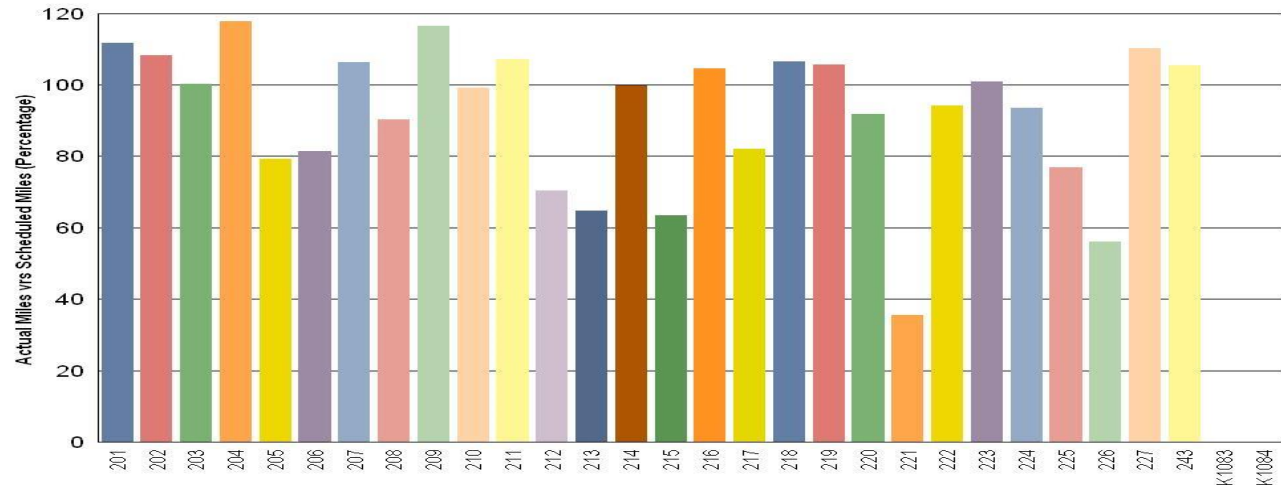
The following cars were out of service due to:

Car # 221 – ATP Troubleshooting

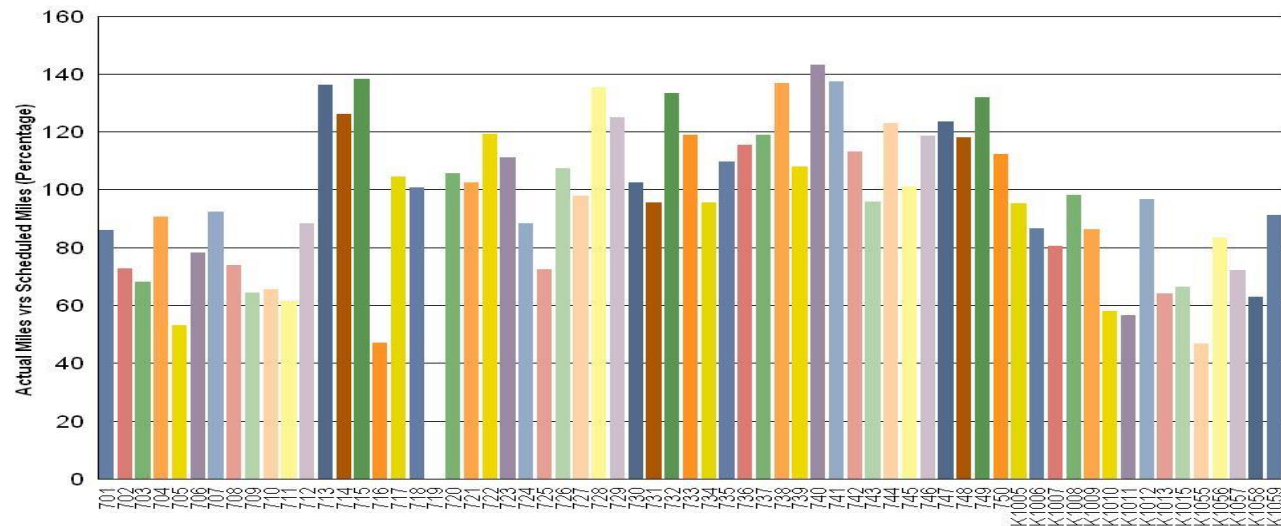
Car # K1083 – Being used for Transportation training

Car # K1084 – Being used for Transportation training

Metro Green Line (30 Cars)



Metro Gold Line (65 Cars)

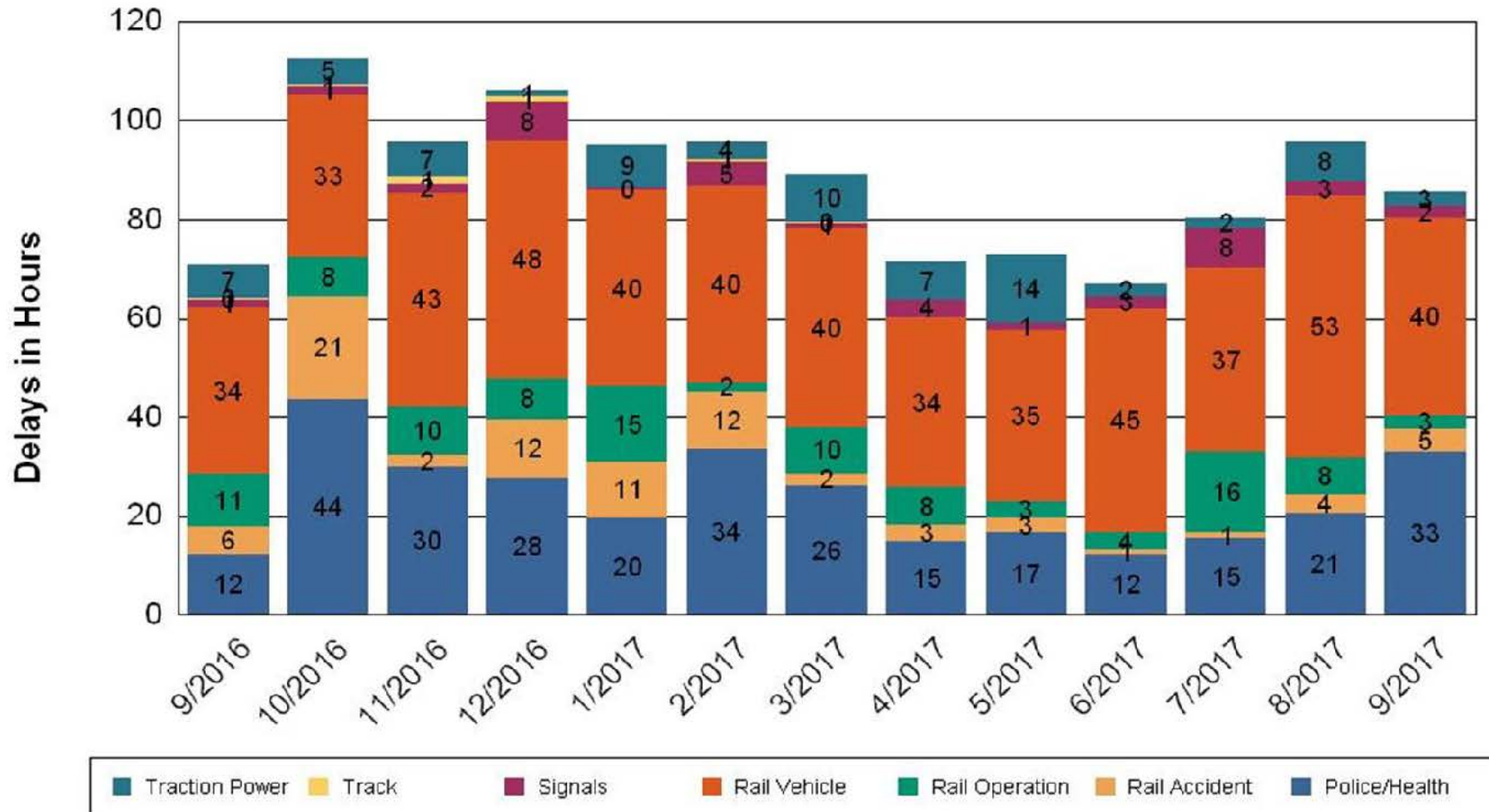


•Percentage includes an average 4% mileage deduction for yard mileage and vehicle testing.

All Train Delays (Hours) September 2016-2017

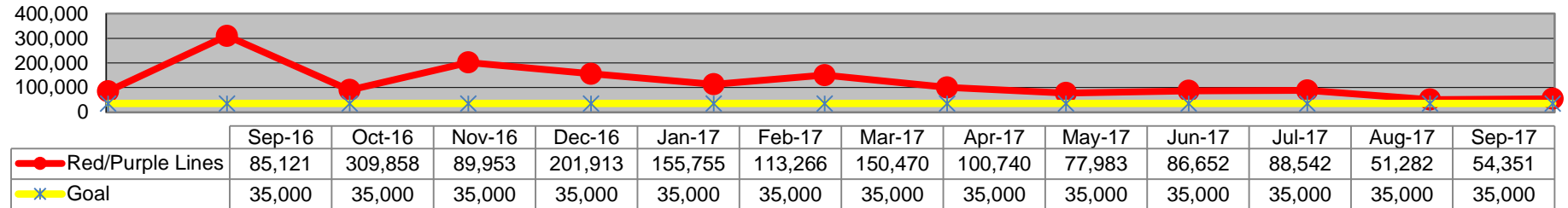
All Train Delays

Totals Include the delay to all trains involved (not just the primary incident)

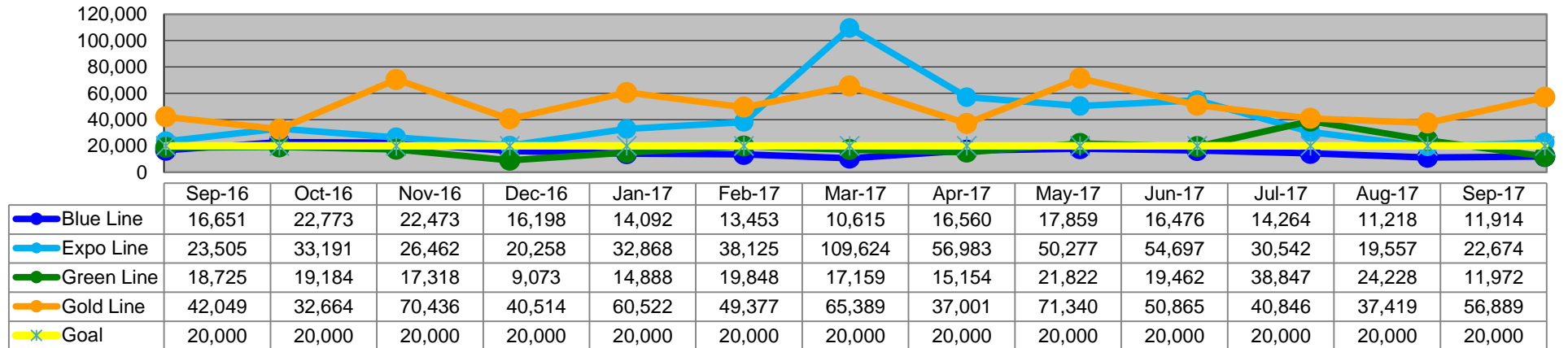


Mean Miles Between Major Failures (MMBF) September 2016-2017

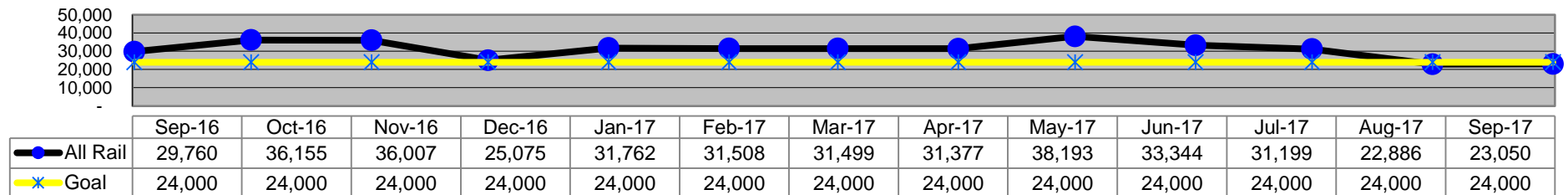
Mean Miles Between Major Failures - Heavy Rail



Mean Miles Between Major Failures - Light Rail



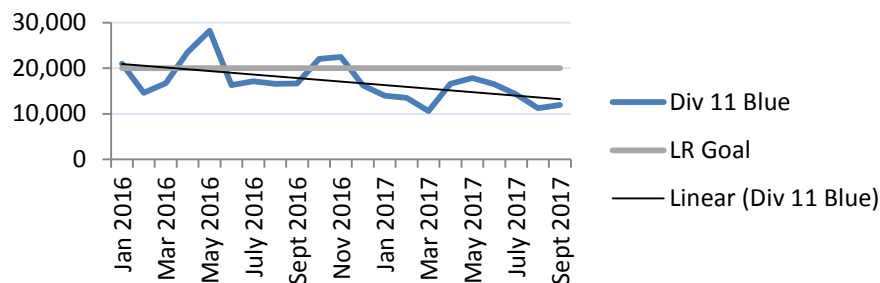
Mean Miles Between Major Failures (all)



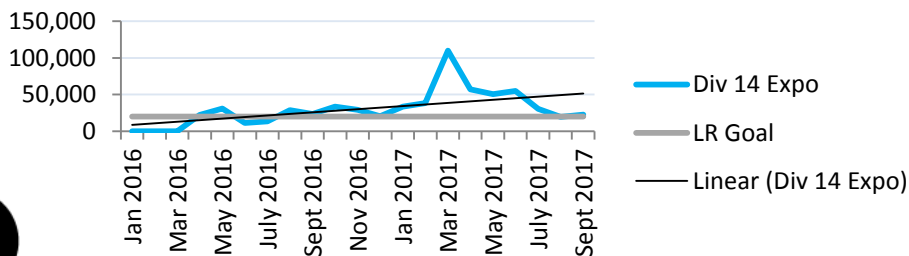
MMBF by Division September 2016-2017

Month	Div 11 Blue	Div 20 Red/Purple	Div 22 Green	Div 21/24 Gold	Div 14 Expo	LR Goal	HR Goal
Jan 2016	20,976	310,794	13,075	24,371	-	20,000	35,000
Feb 2016	14,628	62,876	16,751	42,632	-	20,000	35,000
Mar 2016	16,739	86,604	39,513	61,444	-	20,000	35,000
Apr 2016	23,513	84,909	13,853	31,658	22,195	20,000	35,000
May 2016	28,263	43,282	28,871	63,137	31,044	20,000	35,000
June 2016	16,263	120,190	19,031	28,184	11,289	20,000	35,000
July 2016	17,156	84,844	17,567	19,271	13,173	20,000	35,000
Aug 2016	16,586	89,920	21,505	41,079	28,623	20,000	35,000
Sept 2016	16,651	85,121	18,725	42,049	23,505	20,000	35,000
Oct 2016	22,027	309,858	19,184	32,664	33,606	20,000	35,000
Nov 2016	22,473	89,953	17,318	70,436	29,108	20,000	35,000
Dec 2016	16,198	201,913	9,073	40,514	20,258	20,000	35,000
Jan 2017	13,950	155,755	14,888	60,522	33,309	20,000	35,000
Feb 2017	13,453	113,266	19,848	49,377	38,125	20,000	35,000
Mar 2017	10,615	150,470	17,159	65,389	109,624	20,000	35,000
Apr 2017	16,560	100,740	15,154	37,001	56,983	20,000	35,000
May 2017	17,859	77,983	21,822	71,340	50,277	20,000	35,000
June 2017	16,476	86,652	19,462	50,865	54,697	20,000	35,000
July 2017	14,264	88,542	38,847	40,846	30,542	20,000	35,000
Aug 2017	11,218	51,282	24,228	37,419	19,557	20,000	35,000
Sept 2017	11,914	54,351	11,972	56,889	22,674	20,000	35,000

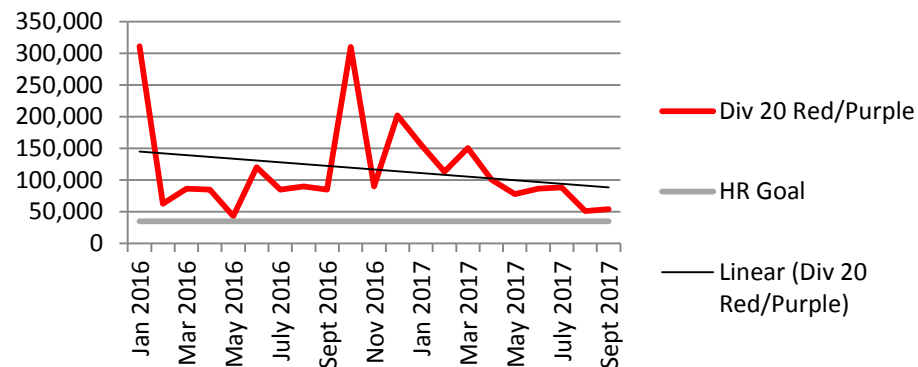
MBL MMBF



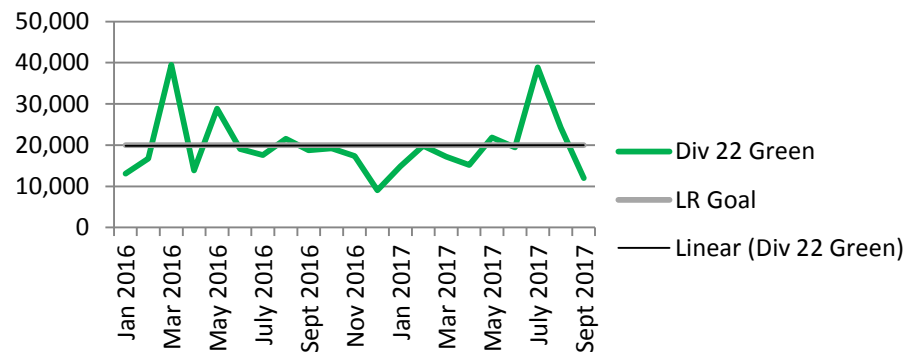
EXPO MMBF



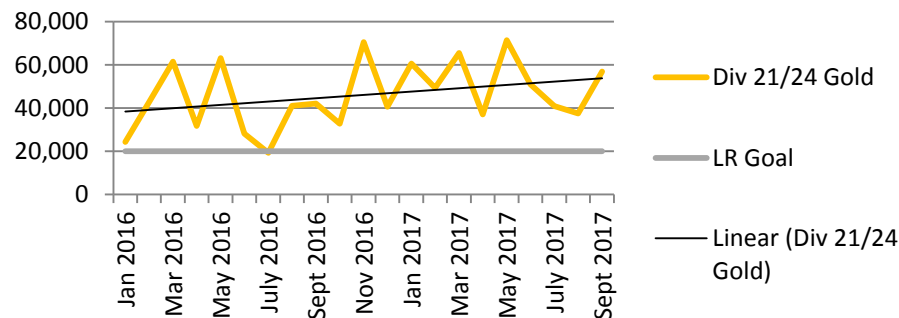
MRL MMBF



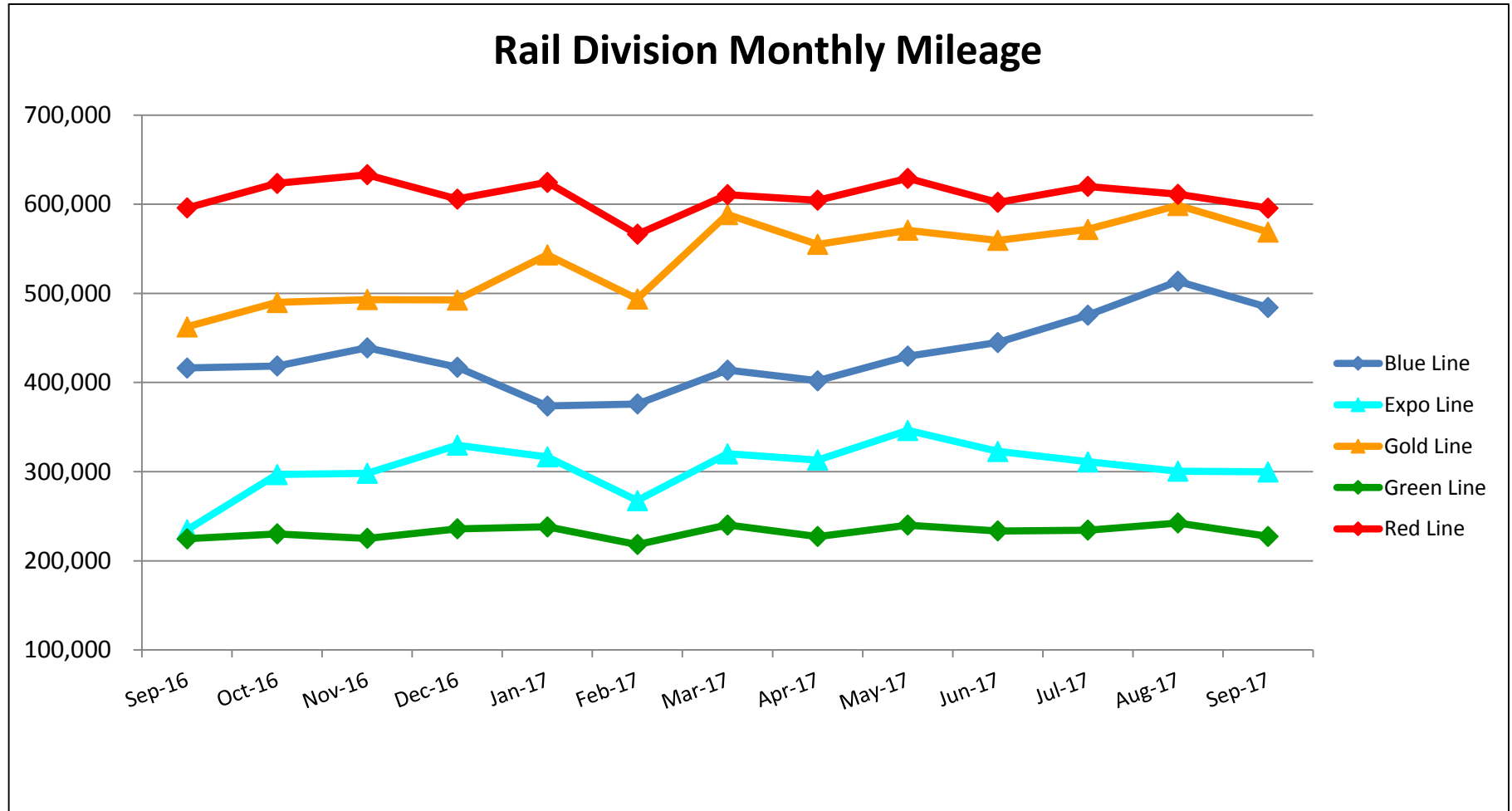
MGL MMBF



MGDL MMBF



Mileage Between Data Range (by month) September 2016-2017



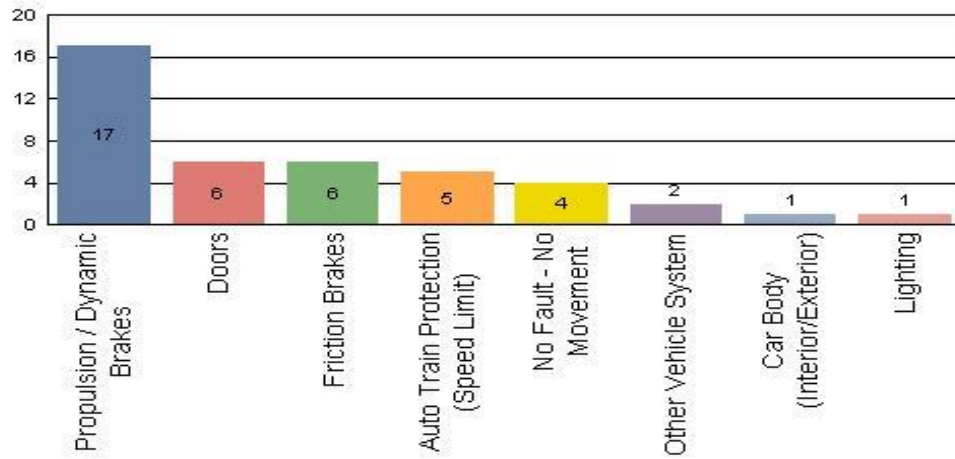
Notes:

- Gold Line increase in mileage is due to the open of the Foothill extension, which includes stations further apart and faster average running speeds.
- With the opening of Division 14 in Santa Monica, the Expo Line mileage is now being reported separately from the Blue Line.

Top Incident Categories September 2017

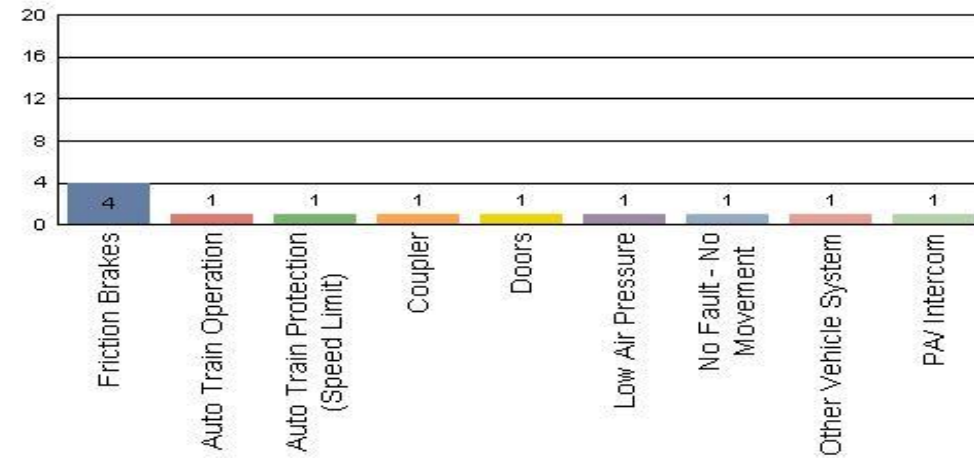
Metro Blue Line (Div 11)

Top Incident Categories



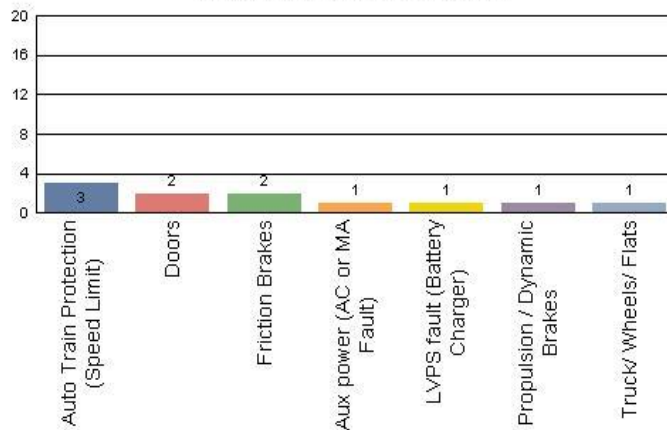
Metro Expo Line (Div 14)

Top Incident Categories



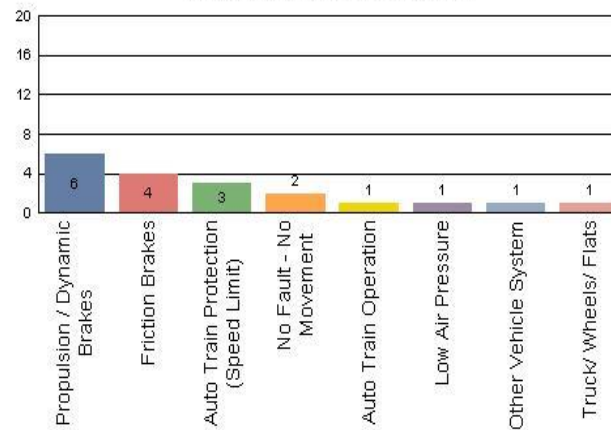
Metro Red/Purple Line (Div 20)

Top Incident Categories



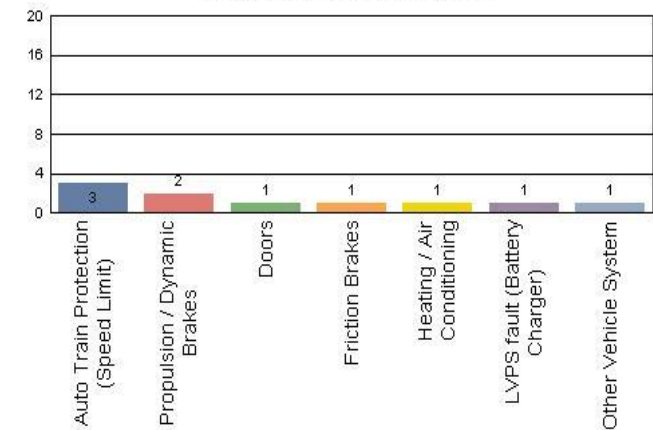
Metro Green Line (Div 22)

Top Incident Categories



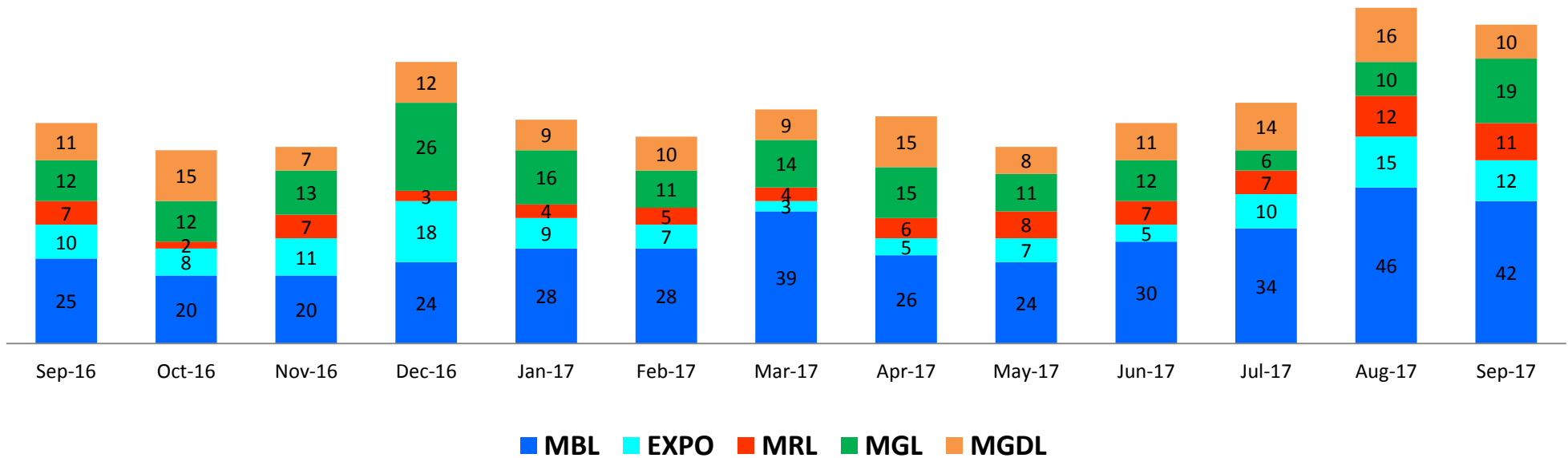
Metro Gold Line (Div 21 & Div 24)

Top Incident Categories



Major Incidents September 2016-2017

Numbers of Major System Failures (by Line)

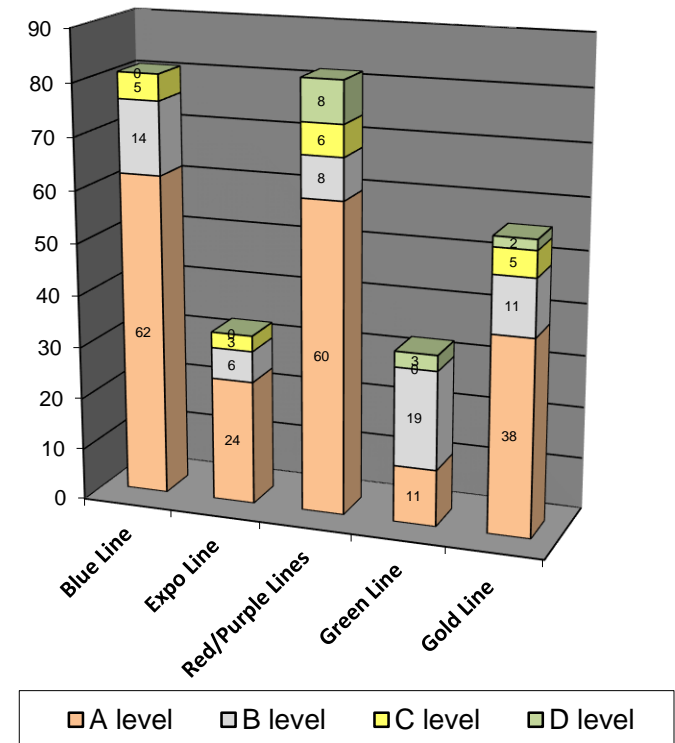


Preventive Maintenance Compliance September 2016-2017

PM Compliance	Sep-16	Oct-16	Nov-16	Dec-16	Jan-17	Feb-17	Mar-17	Apr-17	May-17	Jun-17	Jul-17	Aug-17	Sep-17
Blue Line	100%	100%	100%	100%	100%	100%	100%	100%	100%	100%	100%	100%	100%
Expo Line	100%	100%	100%	100%	100%	100%	100%	100%	100%	100%	100%	100%	100%
Red/Purple Lines	100%	100%	100%	100%	100%	100%	100%	100%	100%	100%	100%	100%	100%
Green Line	97%	100%	100%	100%	100%	100%	100%	100%	100%	100%	100%	100%	100%
Gold Line	100%	100%	100%	100%	100%	100%	100%	100%	100%	98%	100%	100%	100%

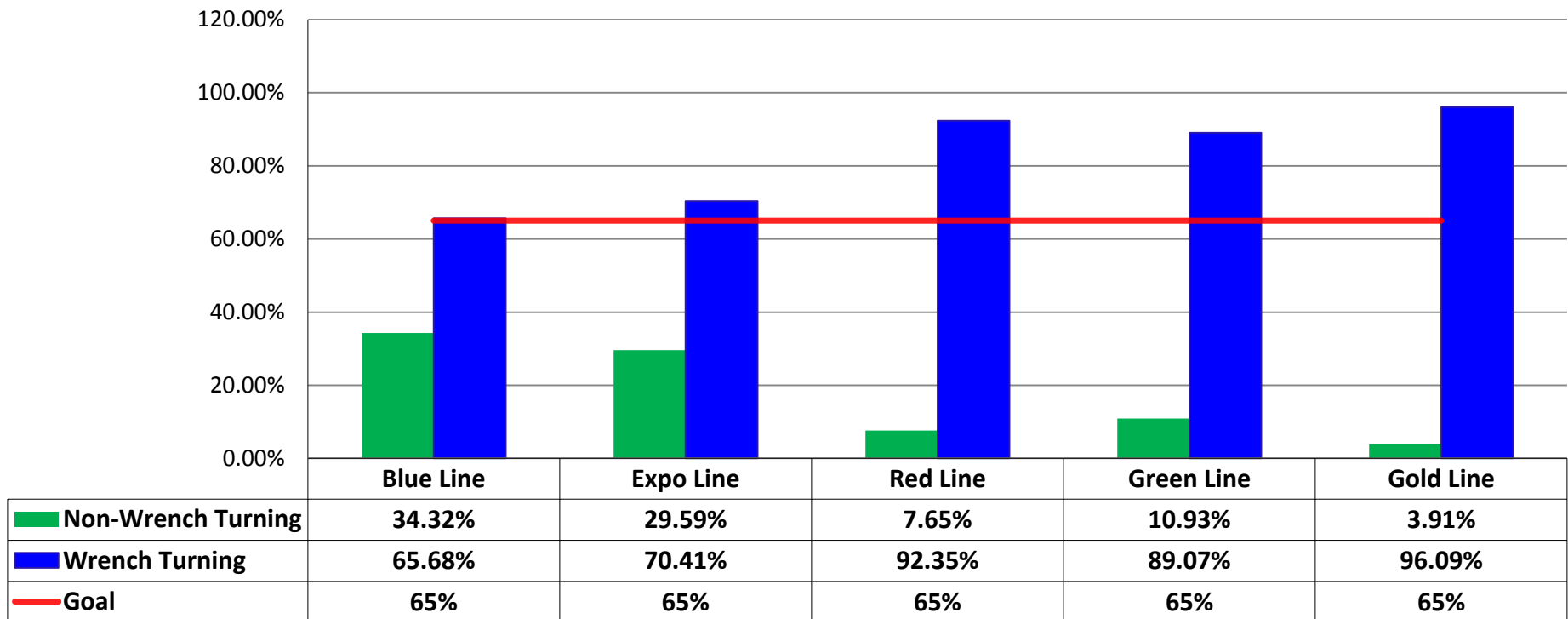
Number of Preventive Maintenance Inspections - September 2017					
Line	A level	B level	C level	D level	Totals
Blue Line	62	14	5	0	81
Expo Line	24	6	3	0	33
Red/Purple Lines	60	8	6	8	82
Green Line	11	19	0	3	33
Gold Line	38	11	5	2	56
Totals:	195	58	19	13	285

Explanation of PM Inspection levels		Miles			
Line	Type	A level	B level	C level	D level
Blue/Expo Lines	P865/P2020	5,000	15,000	30,000	60,000
Blue/Expo Lines	P2000	7,500	22,500	45,000	90,000
Red/Purple Lines	A650	7,500	22,500	45,000	90,000
Green Line	P2000	7,500	22,500	45,000	90,000
Gold Line	P2550	10,000	30,000	60,000	120,000
Gold/Expo Lines	P3010	10,000	30,000	60,000	120,000



RFS Leader Wrench Turning September 2017

RFS - Leader Wrench Turning September 2017



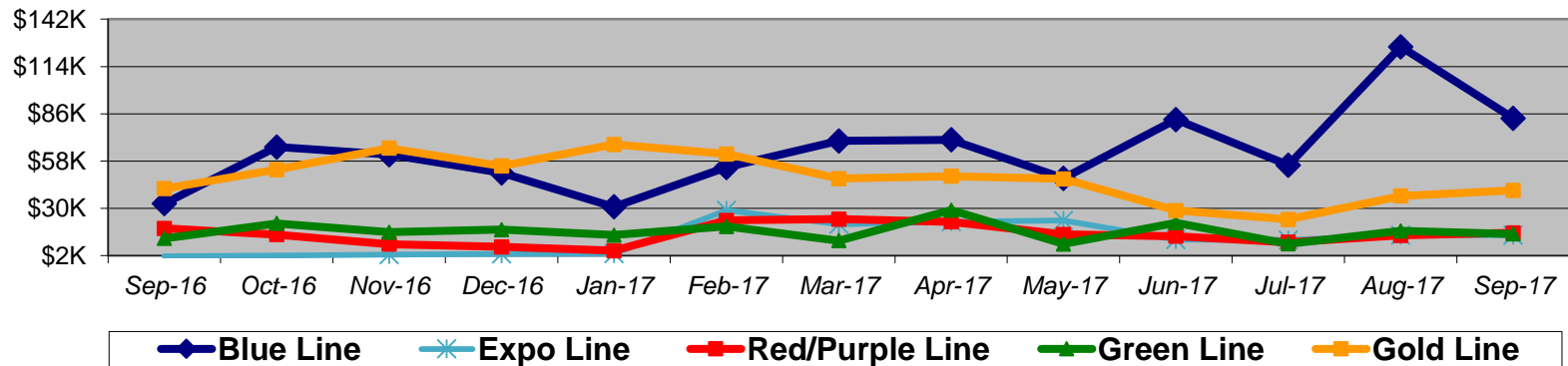
Notes: Labor hours contributed by Maint Specialist Leader, Rail Body/Paint Repair Leader, and Maint Specialist Temporary Leader

Vandalism & Graffiti Report

September 2016-2017

Graffiti Costs

	Sep-16	Oct-16	Nov-16	Dec-16	Jan-17	Feb-17	Mar-17	Apr-17	May-17	Jun-17	Jul-17	Aug-17	Sep-17	13-Month Period
Blue Line	\$33K	\$66K	\$62K	\$51K	\$31K	\$54K	\$70K	\$71K	\$48K	\$83K	\$56K	\$126K	\$83K	\$832K
Expo Line	\$2K	\$2K	\$2K	\$3K	\$3K	\$29K	\$21K	\$22K	\$23K	\$11K	\$11K	\$14K	\$14K	\$157K
Red/Purple Line	\$18K	\$14K	\$9K	\$7K	\$5K	\$23K	\$24K	\$22K	\$14K	\$13K	\$10K	\$14K	\$15K	\$189K
Green Line	\$12K	\$21K	\$16K	\$17K	\$14K	\$19K	\$11K	\$29K	\$9K	\$21K	\$9K	\$17K	\$15K	\$210K
Gold Line	\$42K	\$53K	\$66K	\$55K	\$68K	\$62K	\$48K	\$49K	\$47K	\$29K	\$23K	\$37K	\$41K	\$619K
Totals:	\$106K	\$157K	\$154K	\$133K	\$121K	\$187K	\$172K	\$193K	\$141K	\$158K	\$109K	\$208K	\$168K	\$2,007K



September 2017 Vandalism & Graffiti - All Rail

	Qty	Labor	Materials	Totals
Windows Replaced	49	\$ 11,970	\$ 25,557	\$ 37,527
Vandal Shields Replaced	1,047	\$ 48,079	\$ 17,192	\$ 65,271
Seats Cleaned	135	\$ 852	\$ 40	\$ 892
Seats Inserts Replaced	546	\$ 21,200	\$ 17,005	\$ 38,205
Graffiti Removal - Other	1,269	\$ 14,770	\$ 7,236	\$ 22,006
Repainting Panels	135	\$ 4,252	\$ -	\$ 4,252
Totals	3,181	\$ 101,123	\$ 67,030	\$ 168,153

Vandalism & Graffiti Pictures September 2017

Blue Line

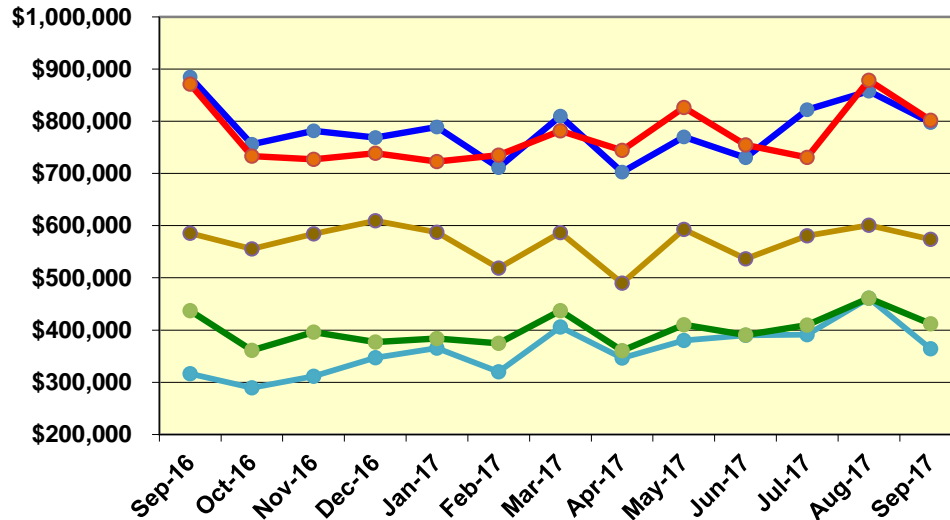


Expo Line

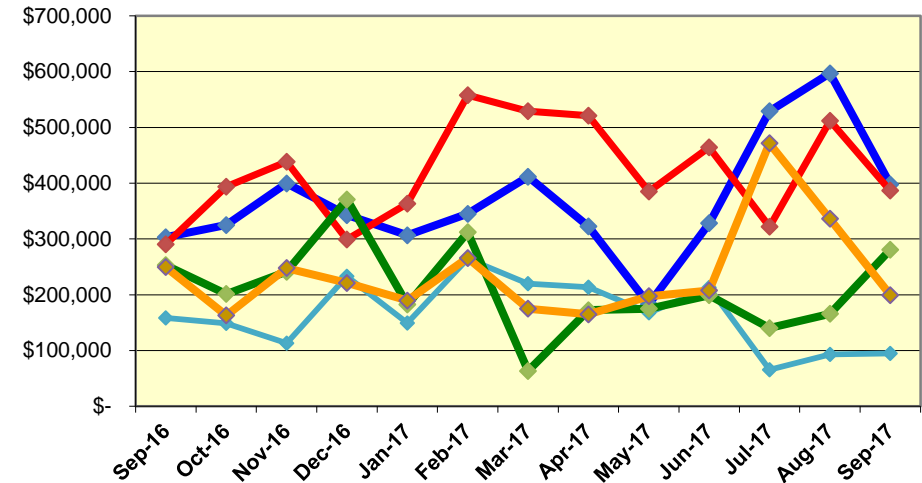


Labor and Material Costs September 2016-2017

Labor Costs



Material Costs



Sep-16	Oct-16	Nov-16	Dec-16	Jan-17	Feb-17	Mar-17	Apr-17	May-17	Jun-17	Jul-17	Aug-17	Sep-17
--------	--------	--------	--------	--------	--------	--------	--------	--------	--------	--------	--------	--------

Labor Costs

	Sep-16	Oct-16	Nov-16	Dec-16	Jan-17	Feb-17	Mar-17	Apr-17	May-17	Jun-17	Jul-17	Aug-17	Sep-17
Blue Line	\$ 884,555	\$ 755,958	\$ 781,662	\$ 768,756	\$ 788,785	\$ 711,354	\$ 810,012	\$ 702,374	\$ 770,245	\$ 730,183	\$ 822,077	\$ 857,616	\$ 797,683
Expo Line	\$ 316,395	\$ 289,213	\$ 311,627	\$ 347,280	\$ 365,354	\$ 320,019	\$ 405,656	\$ 346,398	\$ 379,871	\$ 389,878	\$ 391,095	\$ 461,075	\$ 364,430
Red/Purple Lines	\$ 871,431	\$ 733,202	\$ 727,093	\$ 738,672	\$ 723,038	\$ 735,394	\$ 781,595	\$ 744,460	\$ 826,461	\$ 754,862	\$ 730,783	\$ 878,453	\$ 801,722
Green Line	\$ 436,825	\$ 360,963	\$ 396,278	\$ 376,933	\$ 383,591	\$ 374,747	\$ 437,154	\$ 360,314	\$ 410,146	\$ 390,662	\$ 409,313	\$ 461,320	\$ 411,714
Gold Line	\$ 585,582	\$ 555,213	\$ 584,203	\$ 609,215	\$ 587,313	\$ 518,524	\$ 586,949	\$ 489,634	\$ 593,070	\$ 536,404	\$ 580,341	\$ 600,583	\$ 574,080
Totals	\$ 3,094,789	\$ 2,694,548	\$ 2,800,863	\$ 2,840,856	\$ 2,848,080	\$ 2,660,038	\$ 3,021,365	\$ 2,643,180	\$ 2,979,794	\$ 2,801,989	\$ 2,933,607	\$ 3,259,046	\$ 2,949,629

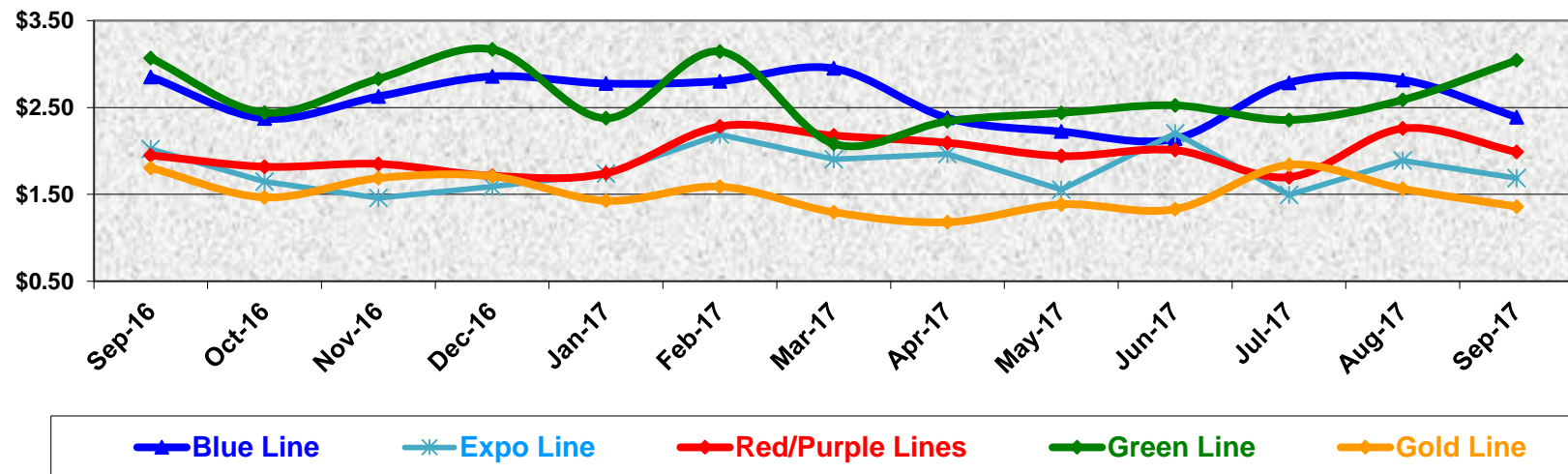
Material Costs

	Sep-16	Oct-16	Nov-16	Dec-16	Jan-17	Feb-17	Mar-17	Apr-17	May-17	Jun-17	Jul-17	Aug-17	Sep-17
Blue Line	\$ 303,202	\$ 324,999	\$ 399,427	\$ 342,695	\$ 306,710	\$ 344,931	\$ 411,541	\$ 322,424	\$ 182,846	\$ 328,206	\$ 529,007	\$ 596,865	\$ 397,951
Expo Line	\$ 158,666	\$ 148,670	\$ 113,229	\$ 233,001	\$ 149,260	\$ 264,561	\$ 219,980	\$ 213,435	\$ 167,428	\$ 212,682	\$ 65,432	\$ 93,233	\$ 94,730
Red/Purple Lines	\$ 290,597	\$ 393,507	\$ 438,480	\$ 299,157	\$ 363,192	\$ 557,616	\$ 528,820	\$ 521,242	\$ 384,776	\$ 463,957	\$ 321,863	\$ 511,576	\$ 386,990
Green Line	\$ 252,988	\$ 201,438	\$ 241,344	\$ 370,755	\$ 182,518	\$ 312,113	\$ 63,371	\$ 172,269	\$ 174,969	\$ 199,040	\$ 140,168	\$ 165,820	\$ 280,752
Gold Line	\$ 249,398	\$ 162,899	\$ 247,842	\$ 221,172	\$ 189,520	\$ 265,930	\$ 175,047	\$ 165,012	\$ 197,220	\$ 207,555	\$ 471,378	\$ 336,025	\$ 199,318
Totals	\$ 1,254,851	\$ 1,231,513	\$ 1,440,322	\$ 1,466,779	\$ 1,191,200	\$ 1,745,150	\$ 1,398,760	\$ 1,394,383	\$ 1,107,239	\$ 1,411,440	\$ 1,527,848	\$ 1,703,519	\$ 1,359,742

Cost Per Mile September 2016-2017

Cost per mile:	Sep-16	Oct-16	Nov-16	Dec-16	Jan-17	Feb-17	Mar-17	Apr-17	May-17	Jun-17	Jul-17	Aug-17	Sep-17	Average
Blue Line	\$2.85	\$2.37	\$2.63	\$2.86	\$2.78	\$2.80	\$2.95	\$2.38	\$2.22	\$2.14	\$2.79	\$2.82	\$2.39	\$2.61
Expo Line	\$2.02	\$1.65	\$1.46	\$1.59	\$1.74	\$2.19	\$1.90	\$1.96	\$1.56	\$2.20	\$1.49	\$1.89	\$1.69	\$1.80
Red/Purple Lines	\$1.95	\$1.82	\$1.85	\$1.71	\$1.74	\$2.28	\$2.18	\$2.09	\$1.94	\$2.01	\$1.70	\$2.26	\$1.99	\$1.96
Green Line	\$3.07	\$2.44	\$2.83	\$3.17	\$2.38	\$3.15	\$2.08	\$2.34	\$2.44	\$2.52	\$2.36	\$2.59	\$3.04	\$2.65
Gold Line	\$1.81	\$1.47	\$1.69	\$1.71	\$1.43	\$1.59	\$1.29	\$1.18	\$1.38	\$1.33	\$1.84	\$1.56	\$1.36	\$1.51

Cost per Mile



ATU Absences vs. Overtime

September 2017

ABSENCE TYPE and HOURS	3941 Blue	3947 Expo	3942 Red	3943 Green	3944 Gold	3948 Monrovia	Total
AWP-ABSENT W/O PERMISSION	-	16	-	-	-	-	16
BER-BEREAVEMENT	-	24	24	-	-	-	48
CTO-COMPENSATORY TIME OFF	58	129	238	92	-	156	673
CUT-EMPLOYEE LEAVES EARLY	1	2	-	1	-	-	4
DSL-DISABILITY LEAVE/LONG	232	104	160	520	-	-	1,016
EFH-EMG. FLOAT HOL.	32	24	120	32	24	80	312
ETO-EXCUSED TIME OFF	87	76	45	5	-	33	246
FMI-FAM IND INJURY	-	-	-	176	-	-	176
FML-FAMILY CARE LEAVE	176	56	620	104	-	72	1,028
FMS-FAMILY LEAVE SICK	24	-	163	8	-	48	243
HLF-HOLIDAY FLOATING	424	128	352	220	48	292	1,464
HNP-HOLIDAY NOT PAID	-	-	8	8	-	-	16
HOL-HOLIDAY LEGAL	528	136	552	120	40	232	1,608
II-INDUSTRIAL INJURY	-	-	-	40	-	16	56
JUR-JURY DUTY	-	-	56	-	-	-	56
LC1-LABOR CODE 233	112	52	116	40	16	57	393
LTI-OCCPIL/LONGTRM INJ LEAVE	320	184	512	296	-	-	1,312
MLN-MILITARY ABSENCE-UNPAID	16	-	168	-	-	-	184
OWP-OFF WITH PERMISSION	-	-	2	-	-	24	26
RTO-REQUESTED TIME OFF-NO PAY	-	-	1	-	-	-	1
SCK-SICK PAY	240	96	216	111	104	216	983
SCW-SICK WITHOUT PAY	40	-	-	49	24	-	113
SPN-SCHOOL PARTNER NOT PAID	-	-	8	-	-	-	8
TAR-TARDY	3	1	1	2	0	1	7
UNP-UNION BUS PAID	-	18	-	-	-	-	18
VAC-VACATION	1,190	468	1,228	529	349	702	4,466
VAS-VACATION WHILE SICK	-	-	10	-	24	-	34
*TRAINING	176	117	31	118	4	171	617
Total Absence Hours	3,658	1,631	4,632	2,471	633	2,099	15,124
**ATU Number of Work Force (active)	106	41	102	45	19	61	374
Full Work Force hours/month	18,370	7,105	17,677	7,799	3,293	10,573	64,814
Absence as a % of Work Force	20%	23%	26%	32%	19%	20%	23%

OVERTIME TYPE and HOURS	3941 Blue	3947 Expo	3942 Red	3943 Green	3944 Gold	3948 Monrovia	Total
CTB-COMPENSATORY TIME TO BANK	230	68	284	100	8	161	851
OTP-PREM OVERTIME	3,789	1,771	4,804	2,037	8	1,219	13,627
TRO OVERTIME	-	48	8	-	-	-	56
WLO-Worked Lunch Overtime	130	129	250	96	20	89	713
Total Overtime Hours	4,148	2,016	5,346	2,232	36	1,469	15,247
Overtime as a % of Work Force	23%	28%	30%	29%	1%	14%	24%

*Training hours captured by Instruction Department are added to Absences Report.

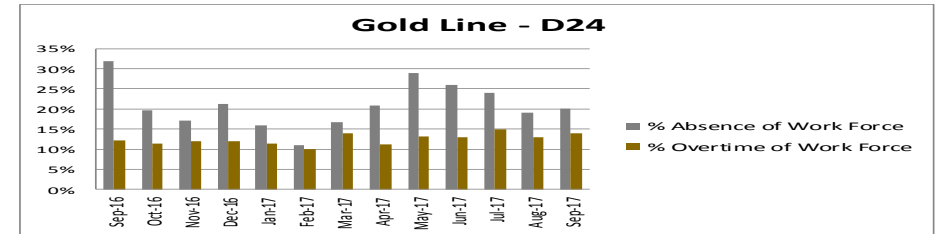
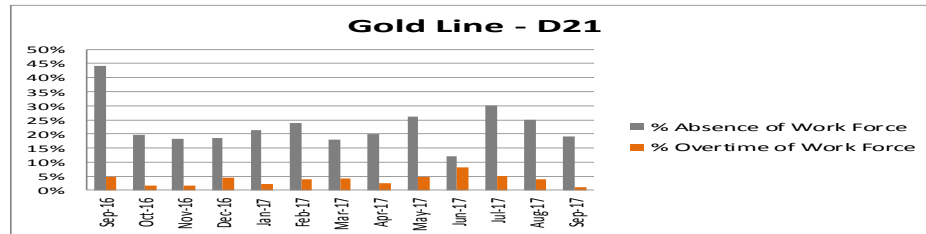
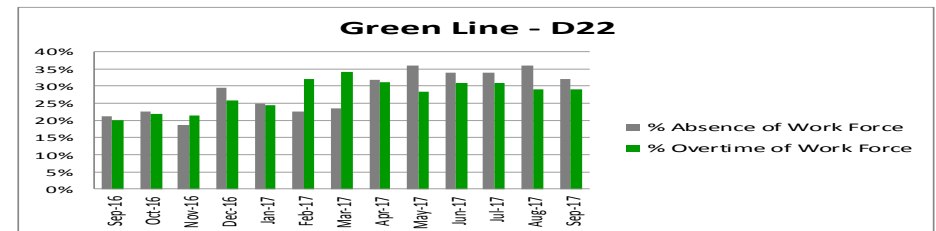
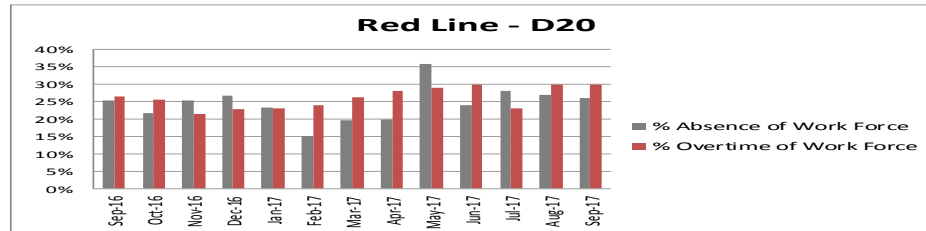
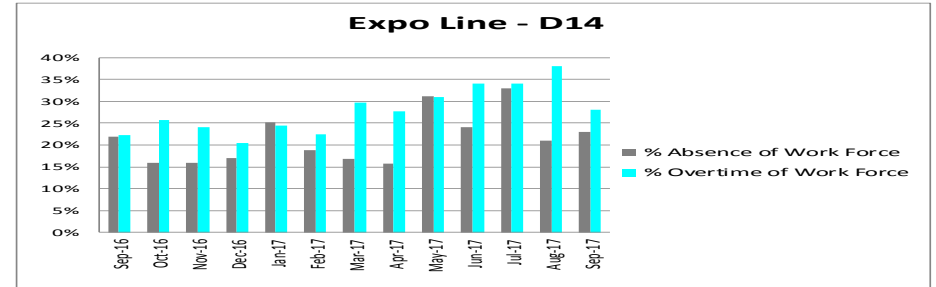
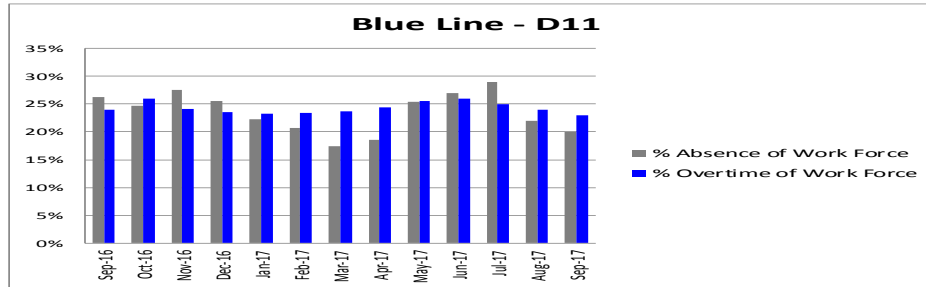
**ATU Employee Numbers from ATU Manpower Status Report (last week of the month)



Metro

Note: Overtime also covers other required activities, including Training, Component Overhaul, and Special Events.

ATU - %Absence & %Overtime of Work Force September 2016 - 2017



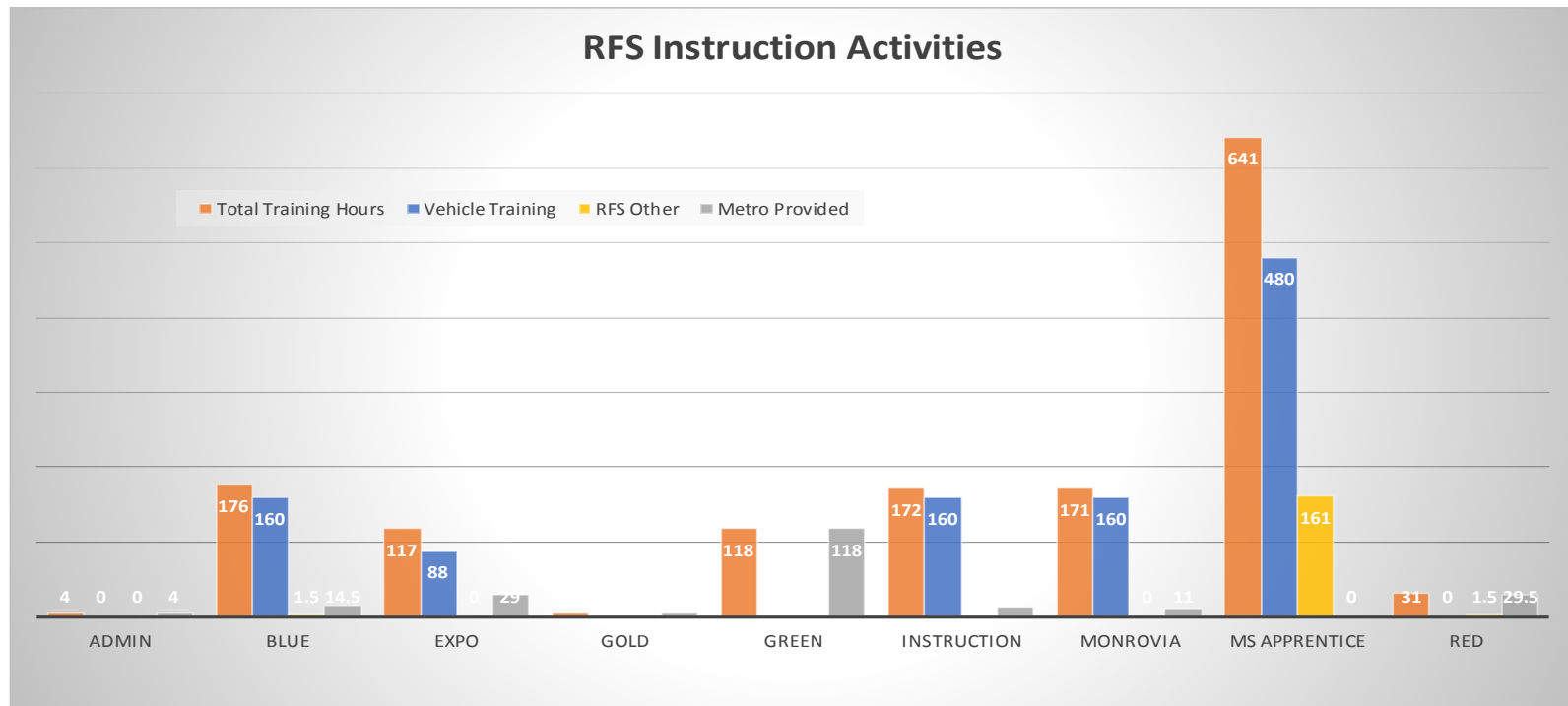
% Absence of Work Force	Sep-16	Oct-16	Nov-16	Dec-16	Jan-17	Feb-17	Mar-17	Apr-17	May-17	Jun-17	Jul-17	Aug-17	Sep-17	13-Month Average
Blue Line D11	26%	25%	28%	26%	22%	21%	17%	19%	25%	27%	29%	22%	20%	24%
Expo Line D14	22%	16%	16%	17%	25%	19%	17%	16%	31%	24%	33%	21%	23%	22%
Red Line D20	25%	22%	25%	27%	23%	15%	20%	20%	36%	24%	28%	27%	26%	24%
Green Line D22	21%	23%	19%	30%	25%	23%	24%	32%	36%	34%	34%	36%	32%	28%
Gold Line D21	44%	20%	18%	18%	21%	24%	18%	20%	26%	12%	30%	25%	19%	23%
Gold Line D24	32%	20%	17%	21%	16%	11%	17%	21%	29%	26%	24%	19%	20%	21%

% Overtime of Work Force	Sep-16	Oct-16	Nov-16	Dec-16	Jan-17	Feb-17	Mar-17	Apr-17	May-17	Jun-17	Jul-17	Aug-17	Sep-17	13-Month Average
Blue Line D11	24%	26%	24%	24%	23%	23%	24%	24%	26%	26%	25%	24%	23%	24%
Expo Line D14	22%	26%	24%	20%	24%	22%	30%	28%	31%	34%	34%	38%	28%	28%
Red Line D20	26%	26%	21%	23%	23%	24%	26%	28%	29%	30%	23%	30%	30%	26%
Green Line D22	20%	22%	21%	26%	25%	32%	34%	31%	28%	31%	31%	29%	29%	28%
Gold Line D21	5%	2%	2%	5%	2%	4%	4%	2%	5%	2%	5%	4%	1%	3%
Gold Line D24	12%	11%	12%	12%	11%	10%	14%	11%	13%	13%	15%	13%	14%	12%

RFS Instruction Department Activities September 2017

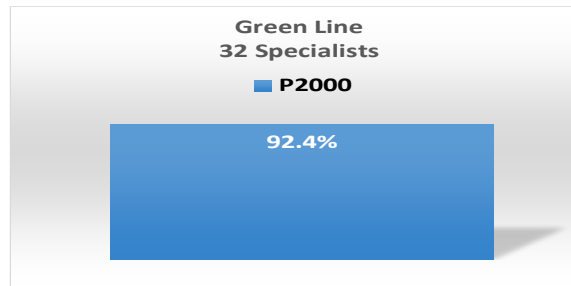
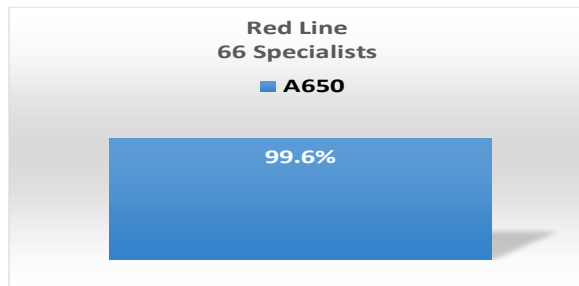
RFS Training Hours - September 2017

Team	No. Employees	Total Training Hours	Metro Provided	RFS Other	Vehicle Training
Admin	2	4	4	-	-
Blue	10	176	15	2	160
Expo	20	117	29	-	88
Gold	2	4	4	-	-
Green	39	118	118	-	-
Instruction	5	172	12	-	160
Monrovia	9	171	11	-	160
MS Apprentice	4	641	-	161	480
Red	11	31	30	2	-
Grand Total	102	1,434	222	164	1,048



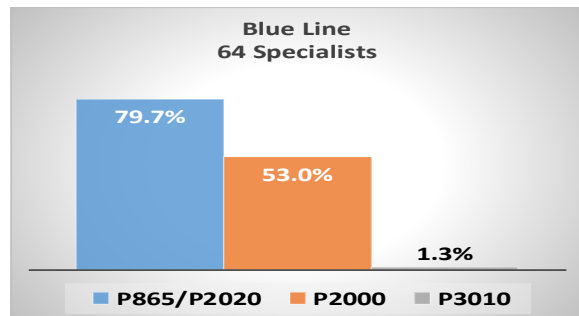
RFS Instruction Department Activities September 2017

RFS Specialist Training Status September 2017



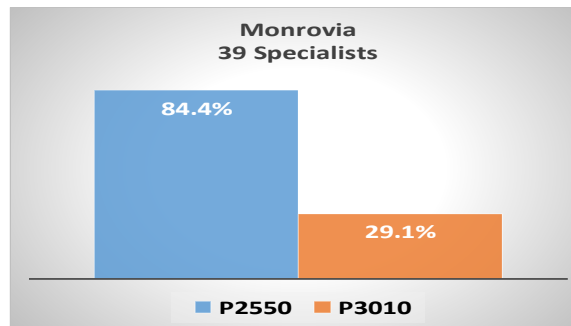
Red Line	66	Specialists
Average Experience	13.4	Years
A650	99.6%	Training Complete

Green	32	Specialists
Average Experience	10.1	Years
P2000	92.4%	Training Complete



Blue Line	64	Specialists
Average Experience	16	Years
P865/P2020	79.7%	Training Complete
P2000	53.0%	
P3010	1.3%	

Expo	27	Specialists
Average Experience	4	Years
P865/P2020	21.3%	Training Complete
P2000	39.8%	
P3010	39.4%	



Gold	12	Specialists
Average Experience	6	Years
P2550	82.9%	Training Complete
P3010	0.5%	Training Complete

Monrovia	39	Specialists
Average Experience	7.8	Years
P2550	84.4%	Training Complete
P3010	29.1%	