



Rail Fleet Services Monthly Report January 2018

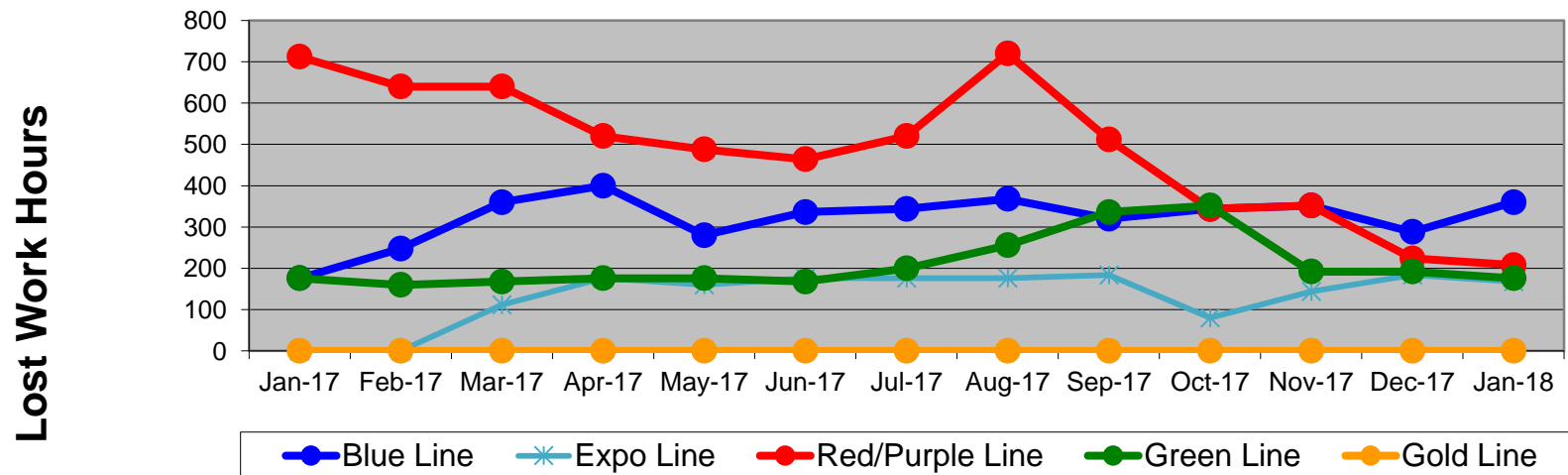
Table of Contents

•	Safety & Cleanliness		
	- Industrial Injuries	Page	3
	- Rail Vehicle Accidents & Major Incidents	Page	4
	- Car Cleanliness	Page	5
•	Customer Service		
	- Service Delivery – AM/PM Pull-Outs	Page	6
	- Vehicle Utilization – Red Line	Page	7
	- Vehicle Utilization – Blue Line & Expo Line	Page	8
	- Vehicle Utilization – Green Line & Gold Line	Page	9
	- All Train Delay Incidents	Page	10
	- Mean Miles Between Failures (Major) & MMBF by Division	Page	11-12
	- Mileage Between Data Range (by month)	Page	13
•	Business Processes		
	- Top Incident Categories	Page	14
	- Major Incidents	Page	15
	- Preventive Maintenance Compliance	Page	16
	- RFS Leader Wrench Turning	Page	17
•	Finance		
	- Vandalism & Graffiti Costs	Page	18
	- Vandalism & Graffiti Pictures	Page	19
	- Labor & Material Costs	Page	20
	- Cost per mile	Page	21
	- Absence vs. Overtime/ %Absence and %Overtime of ATU	Page	22-23
•	Growth		
	- RFS Instruction Department Activities	Page	24-25

Industrial Injuries – Lost Work Hours January 2017-2018

	Jan-17	Feb-17	Mar-17	Apr-17	May-17	Jun-17	Jul-17	Aug-17	Sep-17	Oct-17	Nov-17	Dec-17	Jan-18	13-Month Period
Blue Line	176	248	360	400	280	336	344	368	320	344	352	288	360	4,176
Expo Line	0	0	112	176	160	176	176	176	184	80	144	184	168	1,736
Red/Purple Line	712	640	640	520	488	464	520	720	512	344	352	224	208	6,344
Green Line	176	160	168	176	176	168	200	256	336	352	192	192	176	2,728
Gold Line	0	0	0	0	0	0	0	0	0	0	0	0	0	0
Totals	1,064	1,048	1,280	1,272	1,104	1,144	1,240	1,520	1,352	1,120	1,040	888	912	14,984

Industrial Injuries (lost work hours)



Rail Vehicle Accidents & Major Incidents

January 2017-2018

Repair Costs	Jan-17	Feb-17	Mar-17	Apr-17	May-17	Jun-17	Jul-17	Aug-17	Sep-17	Oct-17	Nov-17	Dec-17	Jan-18	13-Month Period
Blue Line	\$170,311	\$0	\$1,427	\$2,586	\$0	\$15,084	\$632	\$268	\$3,683	\$31,202	\$1,016	\$344	\$0	\$226,553
Expo Line	\$763	\$1,930	\$0	\$1,420	\$0	\$0	\$0	\$191	\$0	\$25,571	\$597	\$321	\$0	\$30,793
Red/Purple Line	\$0	\$1,032	\$0	\$0	\$0	\$0	\$0	\$0	\$0	\$0	\$0	\$0	\$0	\$1,032
Green Line	\$0	\$0	\$0	\$334	\$0	\$0	\$0	\$0	\$0	\$0	\$0	\$0	\$0	\$334
Gold Line	\$3,789	\$15,829	\$1,871	\$191	\$2,692	\$0	\$0	\$0	\$1,343	\$5,751	\$0	\$680	\$0	\$32,146
Totals	\$174,863	\$18,791	\$3,298	\$4,531	\$2,692	\$15,084	\$632	\$459	\$5,026	\$62,524	\$1,613	\$1,345	\$0	\$290,858

Rail Vehicle Accident Costs - January 2018

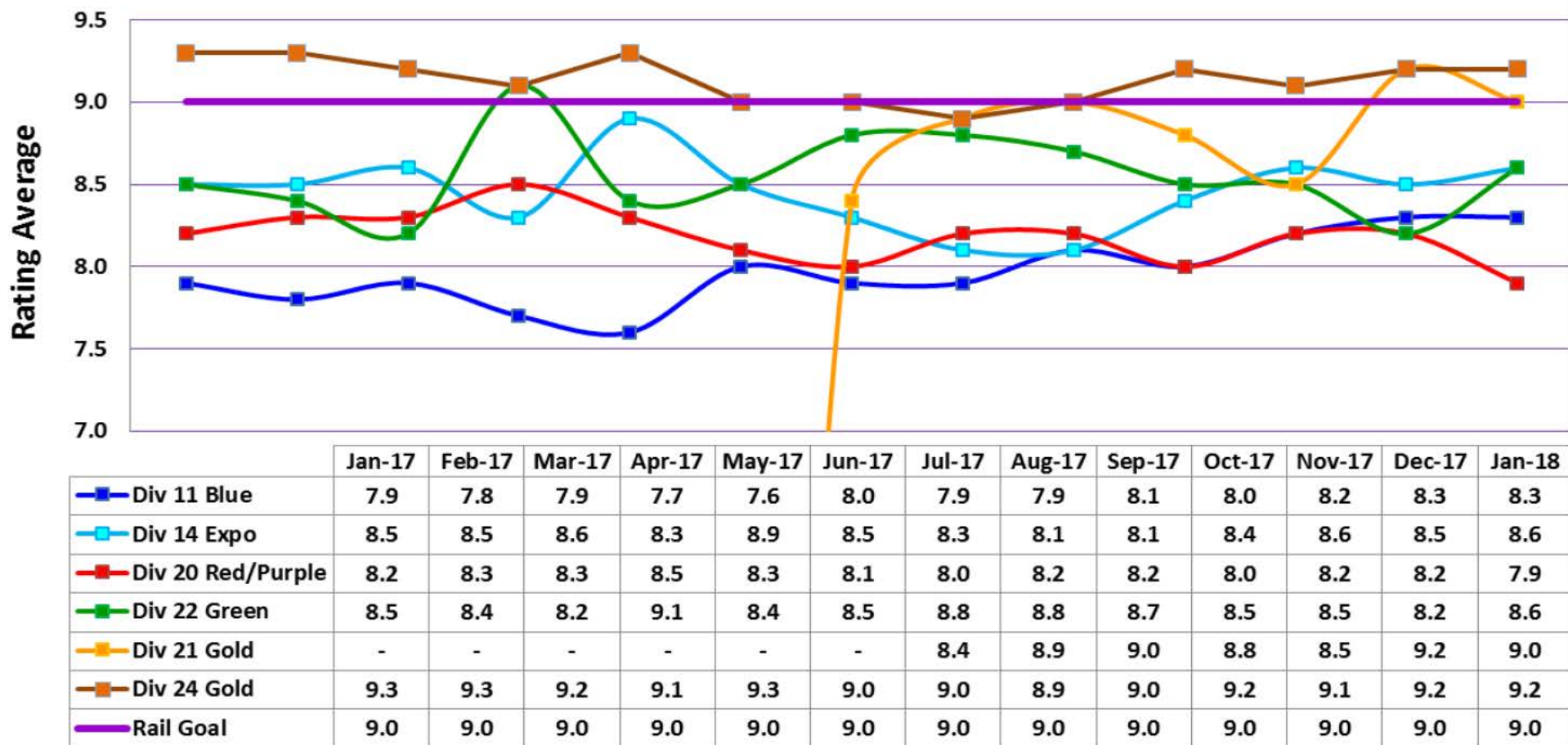
Date	Incident #	Problem Code	Incident Description	Repair Cost
Metro Rail - No Accidents Report in January				\$ -
10-71 = Train vs. Object/ 10-72 = Train vs. Pedestrian/ 10-73 = Train vs. Vehicle/ 10-74 = Train vs. MTA Vehicle/ 10-75 = Derailment				

Note: Repair costs are only the expenses captured during the time period of the report. Actual costs may be significantly higher, if repairs are spread out over several months.

Rail Vehicle – Car Cleanliness

January 2017-2018

Car Cleanliness Report



Service Delivery January 2018

Blue Line Fleet Size: 91

<u>Pull Out</u>	<u>Vehicles Required</u>	<u>Average Available</u>	<u>% Up (Down)</u>
Weekday:	66	67	102%
Weekend:	26	57	219%

Monthly Mileage: 499,246

Expo Line Fleet Size: 55

<u>Pull Out</u>	<u>Vehicles Required</u>	<u>Average Available</u>	<u>% Up (Down)</u>
Weekday:	42	43	102%
Weekend:	30	40	133%

Monthly Mileage: 311,534

Red/Purple Line Fleet Size: 98

<u>Pull Out</u>	<u>Vehicles Required</u>	<u>Average Available</u>	<u>% Up (Down)</u>
Weekday:	64	72	113%
Weekend:	40	60	150%

Monthly Mileage: 647,564

Green Line Fleet Size: 36

<u>Pull Out</u>	<u>Vehicles Required</u>	<u>Average Available</u>	<u>% Up (Down)</u>
Weekday:	26	26	100%
Weekend:	14	20	143%

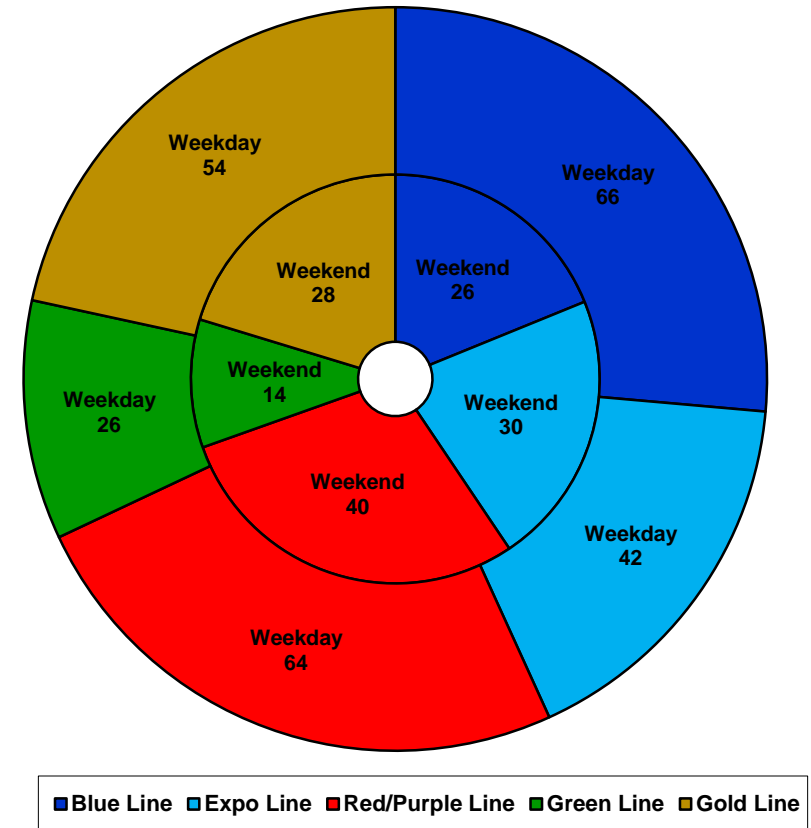
Monthly Mileage: 247,860

Gold Line Fleet Size: 69

<u>Pull Out</u>	<u>Vehicles Required</u>	<u>Average Available</u>	<u>% Up (Down)</u>
Weekday (Div 21):	10	10	100%
Weekday (Div 24):	44	44	100%
Weekend (Div 24):	28	40	143%

***Monthly Mileage: 630,822**

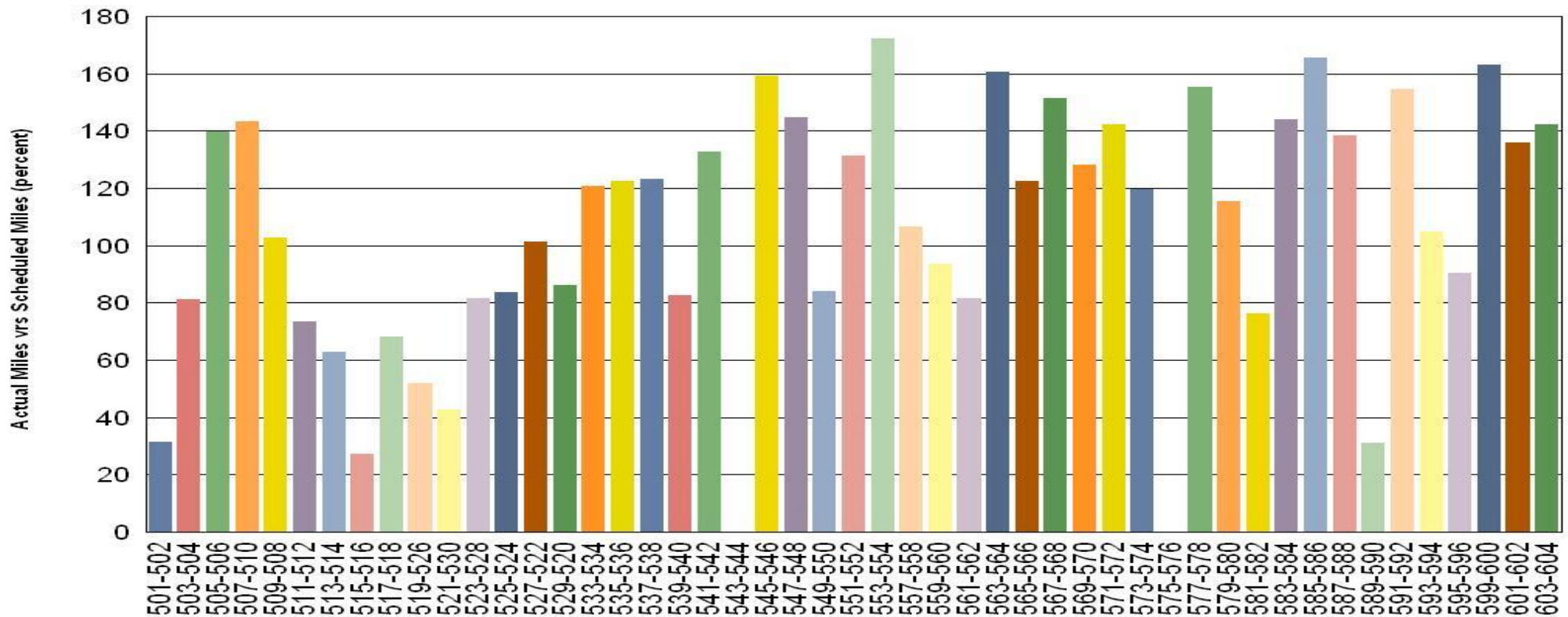
*** Gold Line monthly mileage includes Division 21 and 24.**



NOTES: Standby trains not included in vehicle requirements

Vehicle Utilization January 2018

Metro Red/Purple Line (98 Cars)



Red/Purple Line:

The following cars were out of service due to:

Car # 501-502 – Propulsion Fault

Car # 515-516 – Propulsion Fault

Car # 543-544 – Interior Renovation Campaign

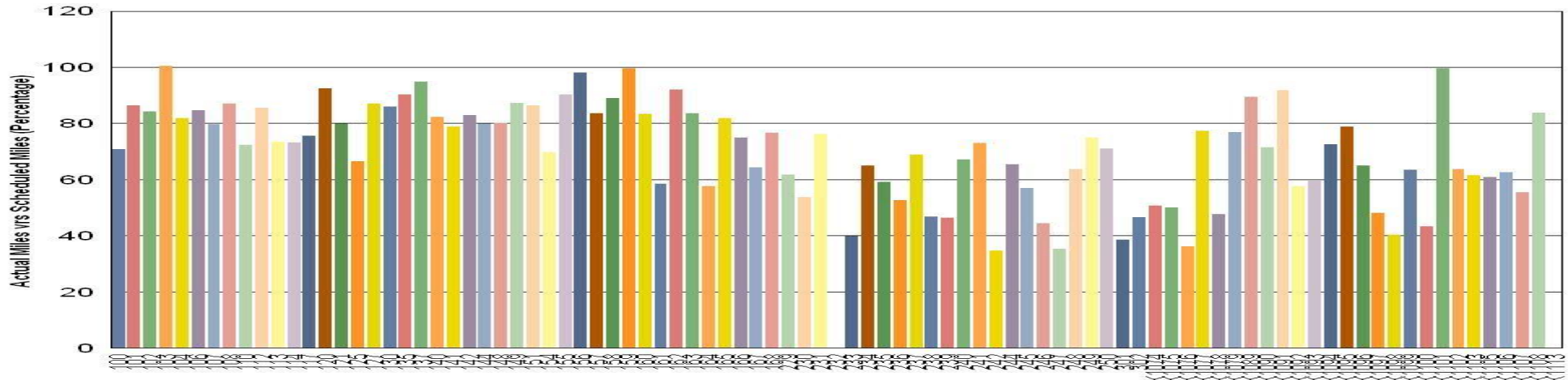
Car # 575-576 – Interior Renovation Campaign

Car # 589-590 – Propulsion Fault



Vehicle Utilization January 2018

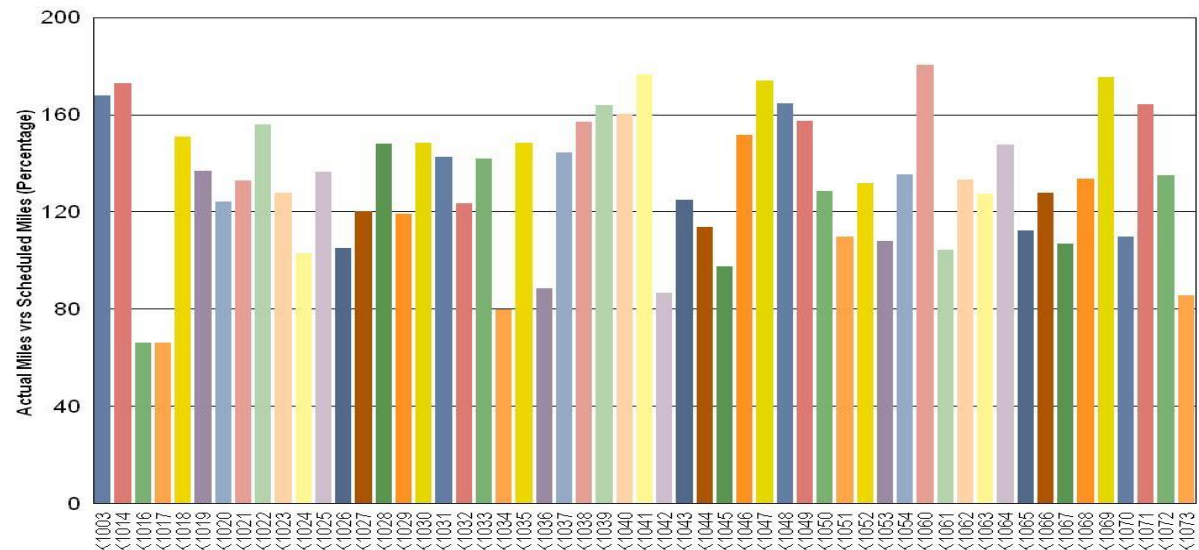
Metro Blue Line (91 Cars)



Blue Line: The following cars were out of service due to:

- Car # 232 – Off the Property for Midlife Overhaul
- Car # 242 – Exterior Paint Restoration
- Car # 247 – Propulsion Fault
- Car # 301 – Door Wiring Issue / Coupler Overhaul
- Car # K1076 – Accident Repair / Master Controller Issue
- Car # K1113 – Transferred to the Blue Line 01-26-2018

Metro Expo Line (55 Cars)



Expo Line: The fleet has met the daily maximum utilization requirements for the month.



Vehicle Utilization January 2018

Metro Green Line (36 Cars)

Green Line:

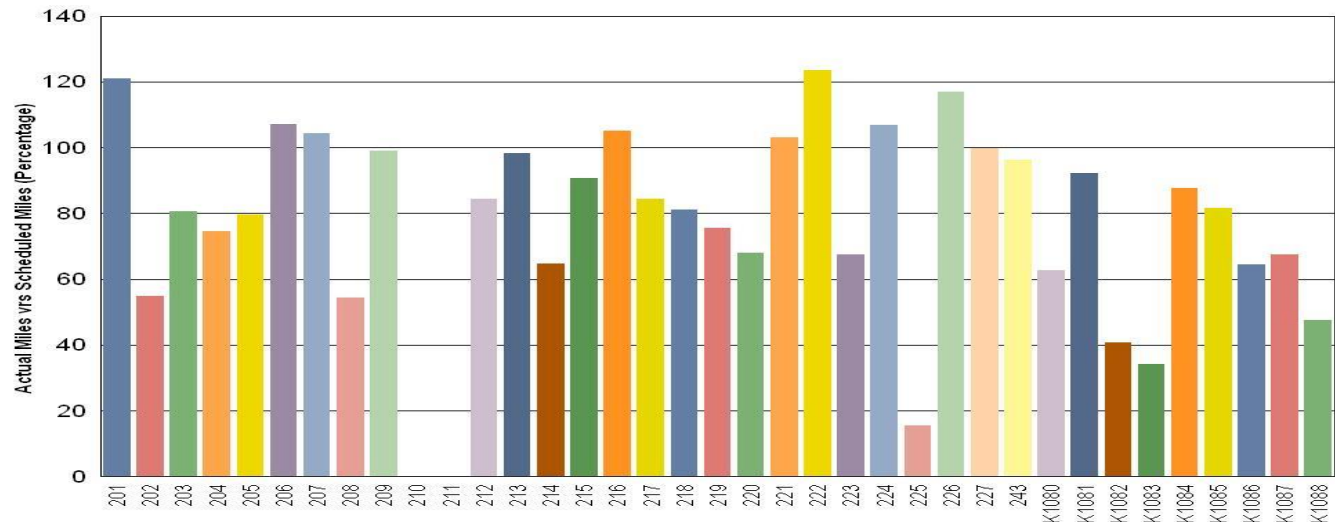
The following cars were out of service due to:

Car # 210 – Pantograph Damage Repair

Car # 211 – Off the Property for Midlife Overhaul

Car # 225 – Exterior Paint Rehab

Car # K1083 – Warranty Repair



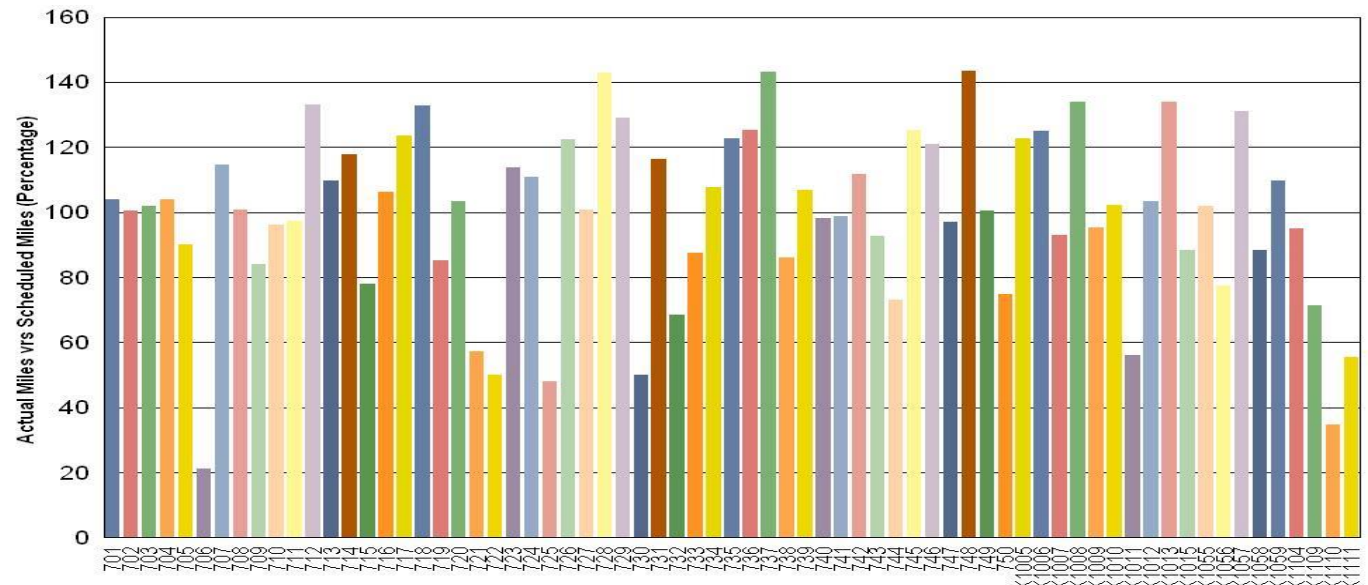
Metro Gold Line (69 Cars)

Gold Line:

The following cars were out of service due to:

Car # 706 – 120K PM Inspection Mileage Hold and Miscellaneous Repairs

Car # K1110 – Newly Commissioned Car that needed some items repaired under warranty (not in-service for the complete month)

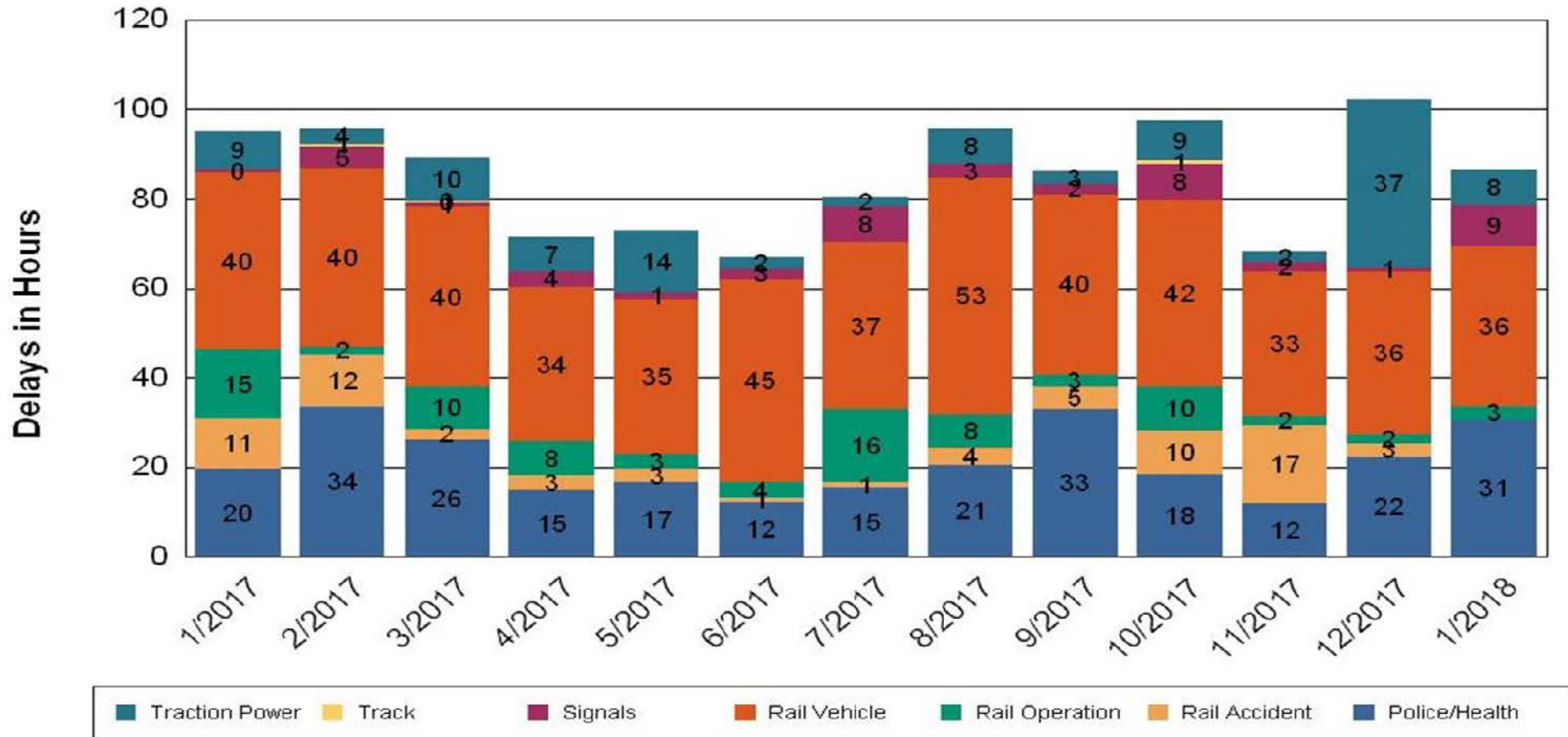


•Percentage includes an average 4% mileage deduction for yard mileage and vehicle testing.

All Train Delays (Hours) January 2017-2018

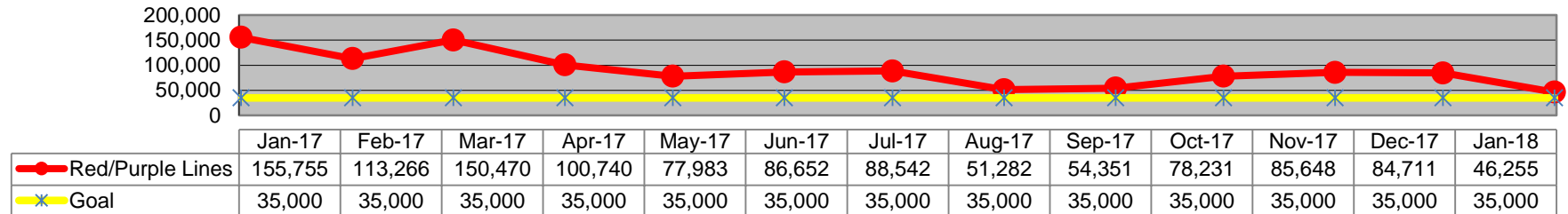
All Train Delays

Totals Include the delay to all trains involved (not just the primary incident)

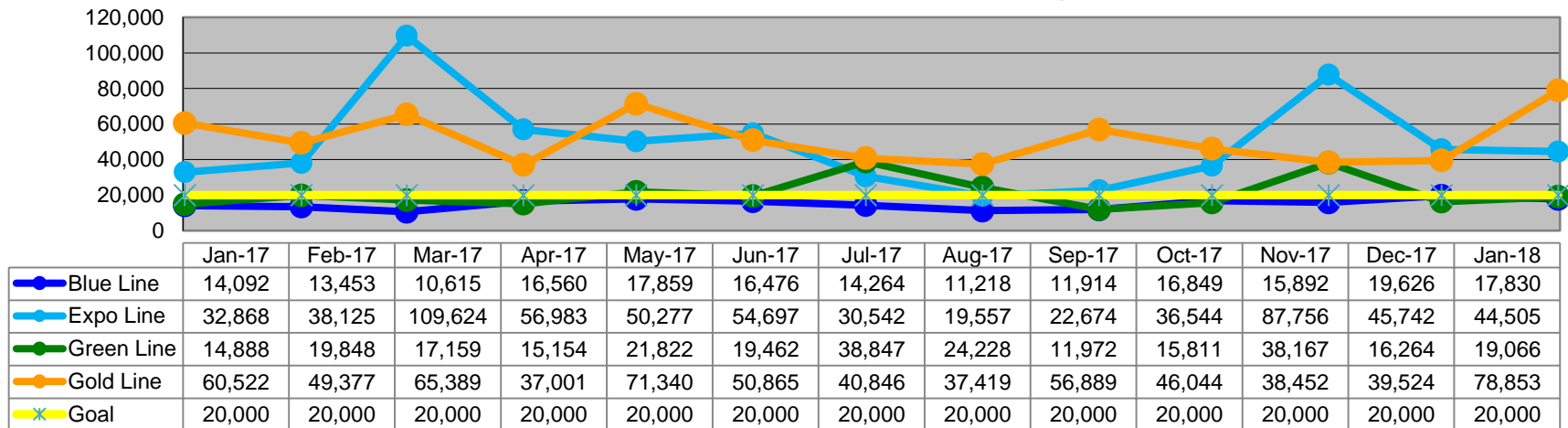


Mean Miles Between Major Failures (MMBF) January 2017-2018

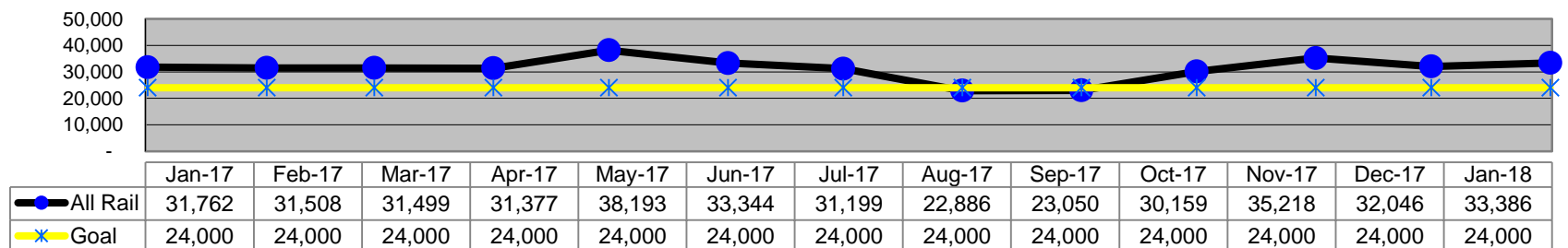
Mean Miles Between Major Failures - Heavy Rail



Mean Miles Between Major Failures - Light Rail



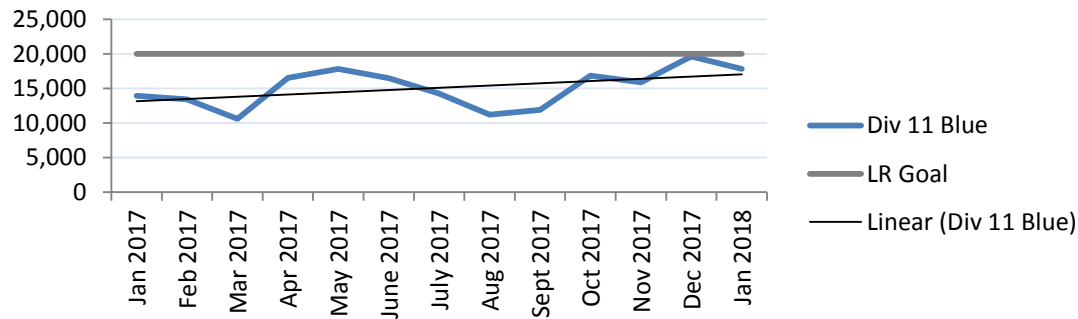
Mean Miles Between Major Failures (all)



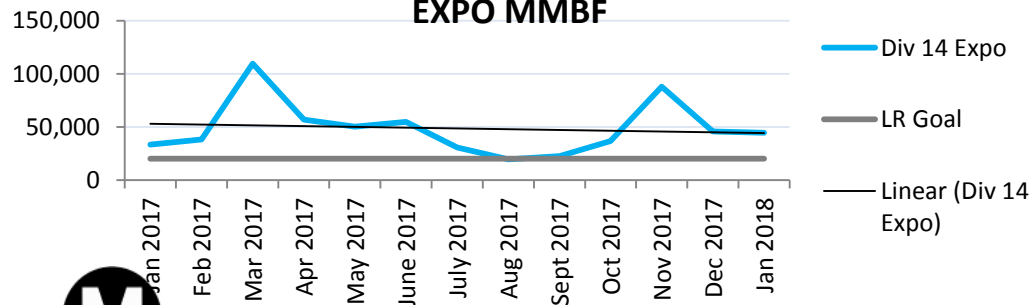
MMBF by Division January 2017-2018

Month	Div 11 Blue	Div 14 Expo	Div 20 Red/Purple	Div 22 Green	Div 21/24 Gold	LR Goal	HR Goal
Jan 2017	13,950	33,309	155,755	14,888	60,522	20,000	35,000
Feb 2017	13,453	38,125	113,266	19,848	49,377	20,000	35,000
Mar 2017	10,615	109,624	150,470	17,159	65,389	20,000	35,000
Apr 2017	16,560	56,983	100,740	15,154	37,001	20,000	35,000
May 2017	17,859	50,277	77,983	21,822	71,340	20,000	35,000
June 2017	16,476	54,697	86,652	19,462	50,865	20,000	35,000
July 2017	14,264	30,542	88,542	38,847	40,846	20,000	35,000
Aug 2017	11,218	19,557	51,282	24,228	37,419	20,000	35,000
Sept 2017	11,914	22,674	54,351	11,972	56,889	20,000	35,000
Oct 2017	16,849	36,544	78,231	15,811	46,044	20,000	35,000
Nov 2017	15,892	87,756	85,648	38,167	38,452	20,000	35,000
Dec 2017	19,626	45,742	84,711	16,264	39,524	20,000	35,000
Jan 2018	17,830	44,505	46,255	19,066	78,853	20,000	35,000

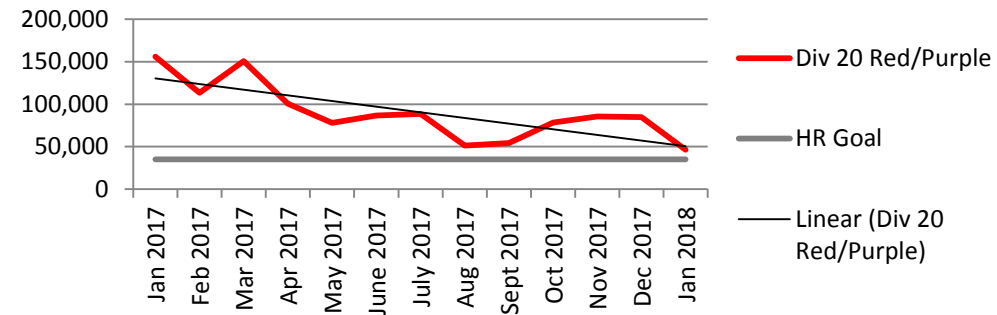
MBL MMBF



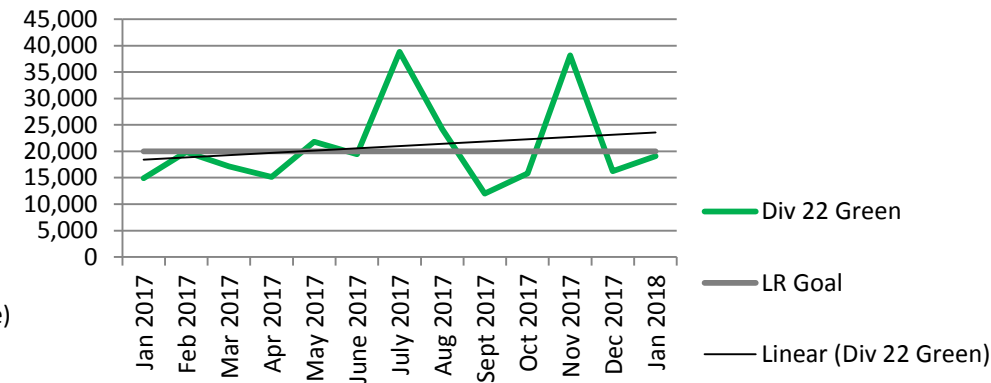
EXPO MMBF



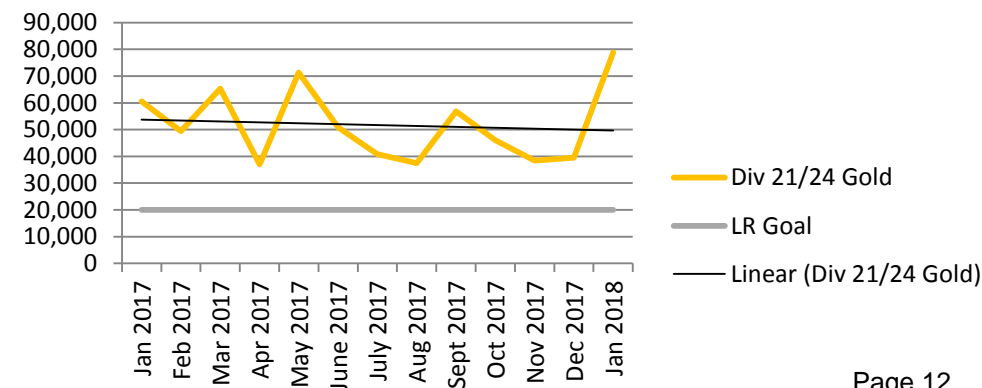
MRL MMBF



MGL MMBF

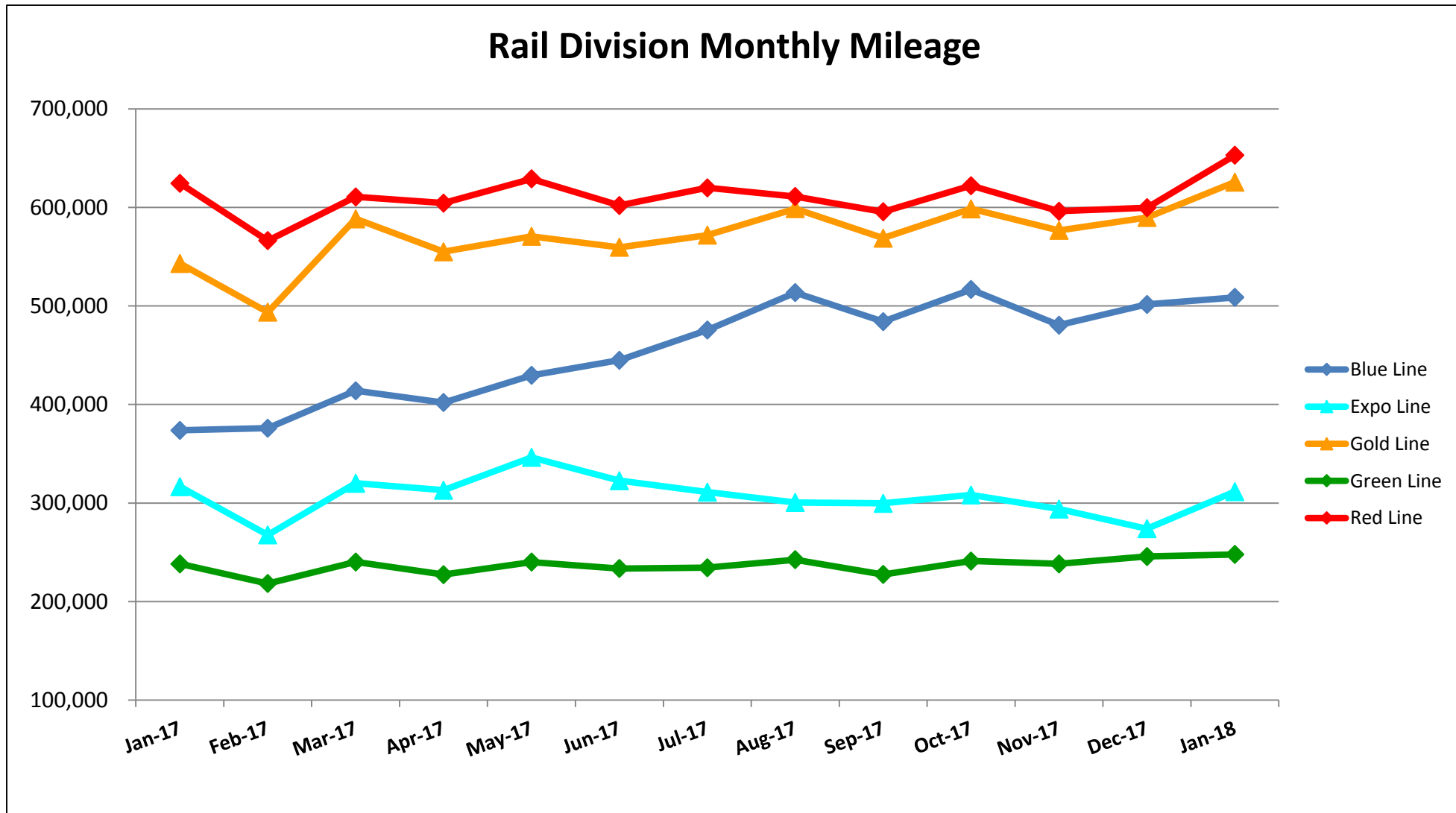


MGDL MMBF



Mileage Between Data Range (by month)

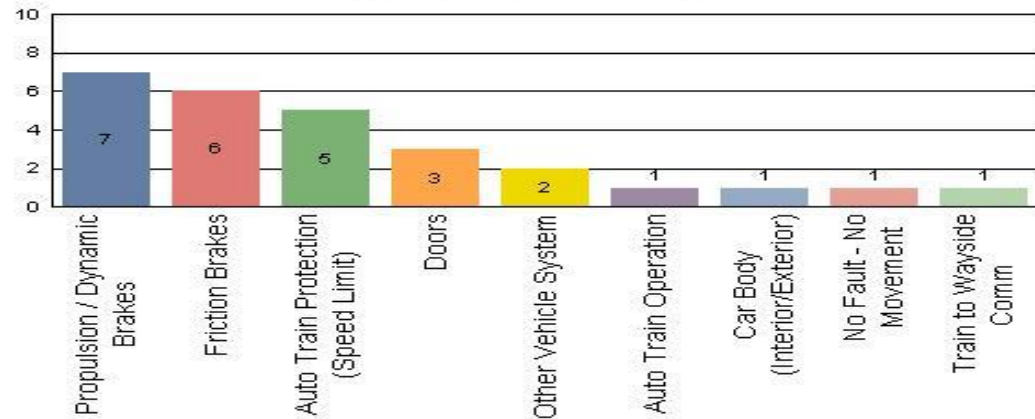
January 2017-2018



Top Incident Categories January 2018

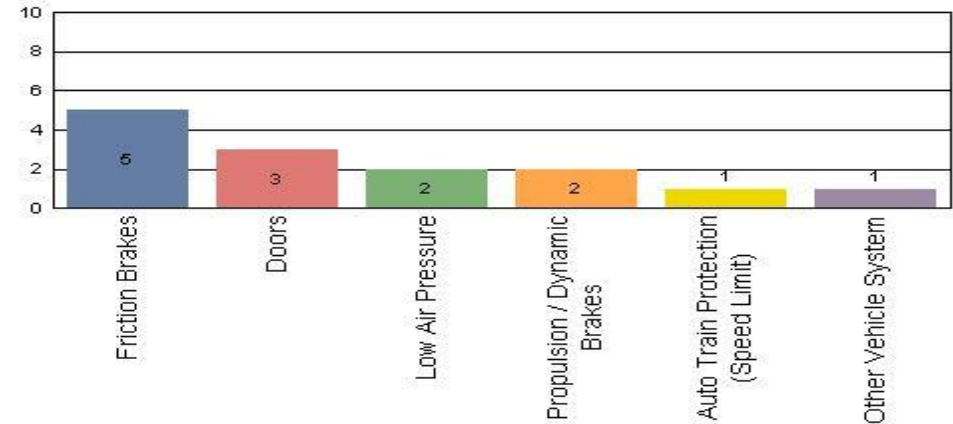
Metro Blue Line (Div 11)

Top Incident Categories



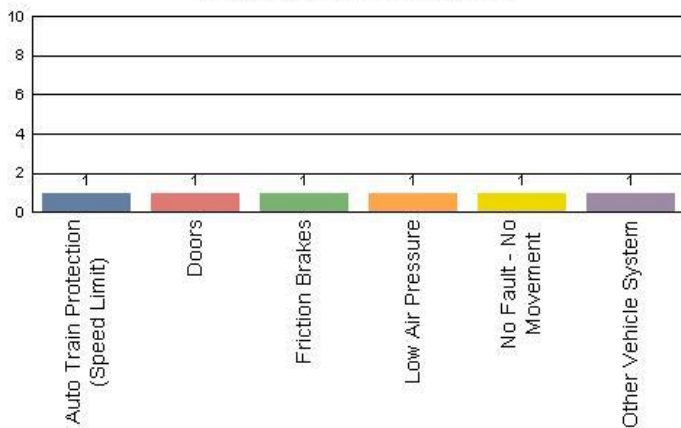
Metro Red/Purple Line (Div 20)

Top Incident Categories



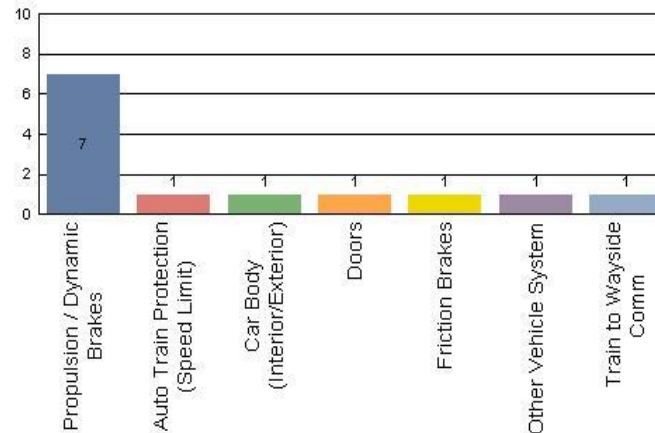
Metro Expo Line (Div 14)

Top Incident Categories



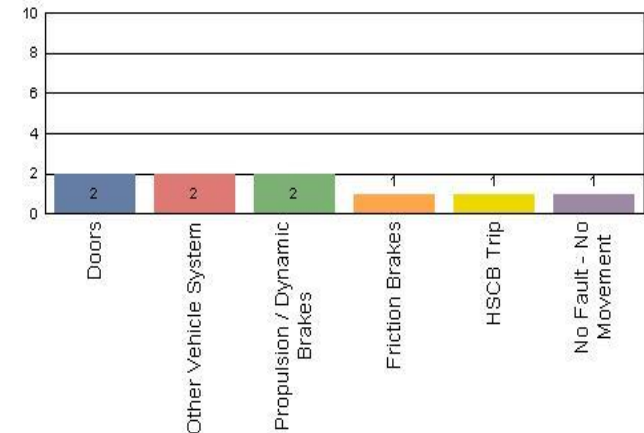
Metro Green Line (Div 22)

Top Incident Categories



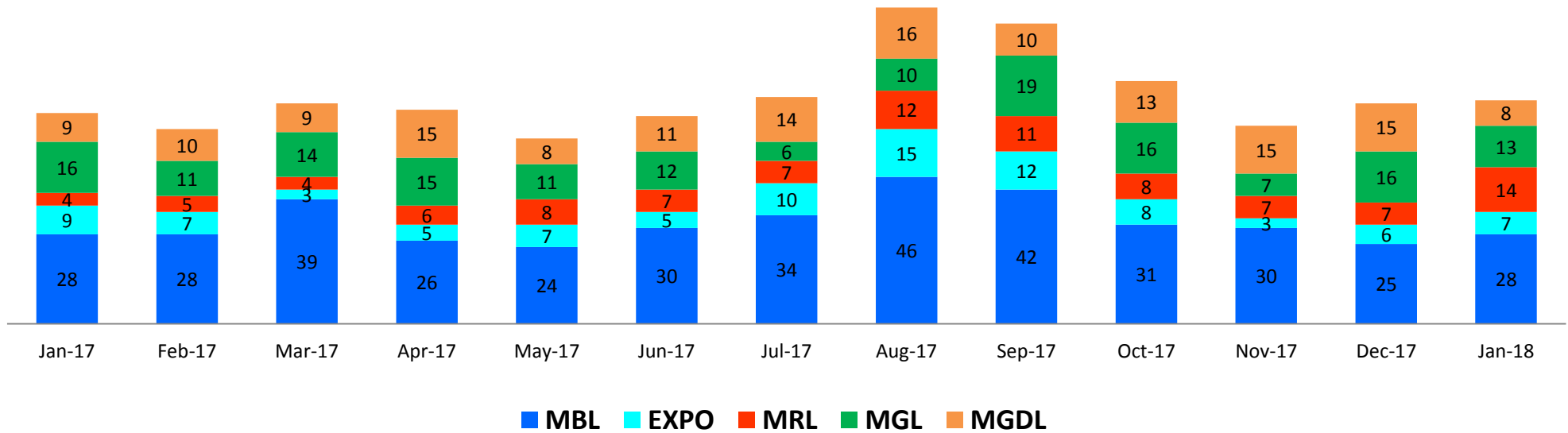
Metro Gold Line (Div 21 & Div 24)

Top Incident Categories



Major Incidents January 2017-2018

Numbers of Major System Failures (by Line)



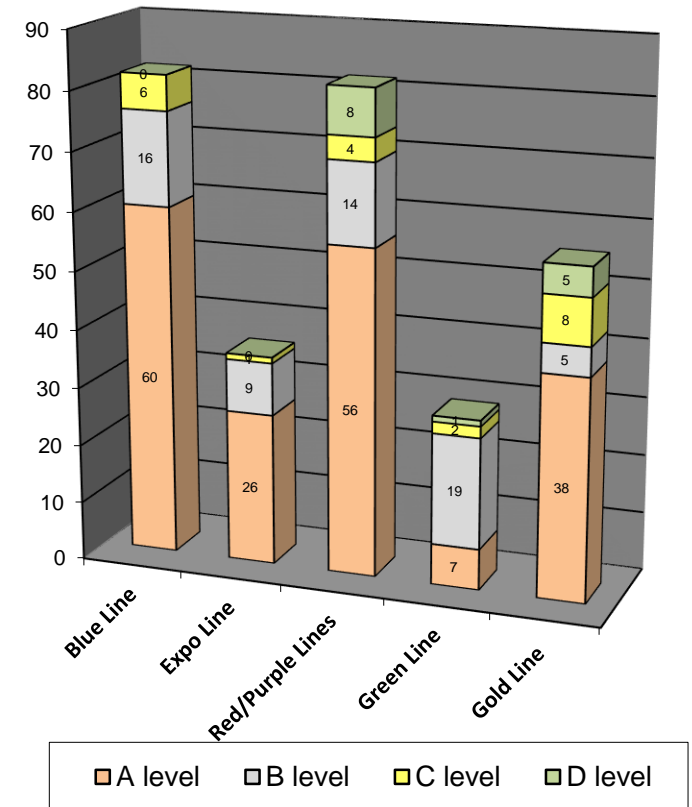
Preventive Maintenance Compliance

January 2017-2018

PM Compliance	Jan-17	Feb-17	Mar-17	Apr-17	May-17	Jun-17	Jul-17	Aug-17	Sep-17	Oct-17	Nov-17	Dec-17	Jan-18
Blue Line	100%	100%	100%	100%	100%	100%	100%	100%	100%	100%	100%	100%	100%
Expo Line	100%	100%	100%	100%	100%	100%	100%	100%	100%	100%	100%	100%	100%
Red/Purple Lines	100%	100%	100%	100%	100%	100%	100%	100%	100%	100%	100%	100%	100%
Green Line	100%	100%	100%	100%	100%	100%	100%	100%	100%	100%	100%	100%	100%
Gold Line	100%	100%	100%	100%	100%	98%	100%	100%	100%	100%	100%	100%	99%

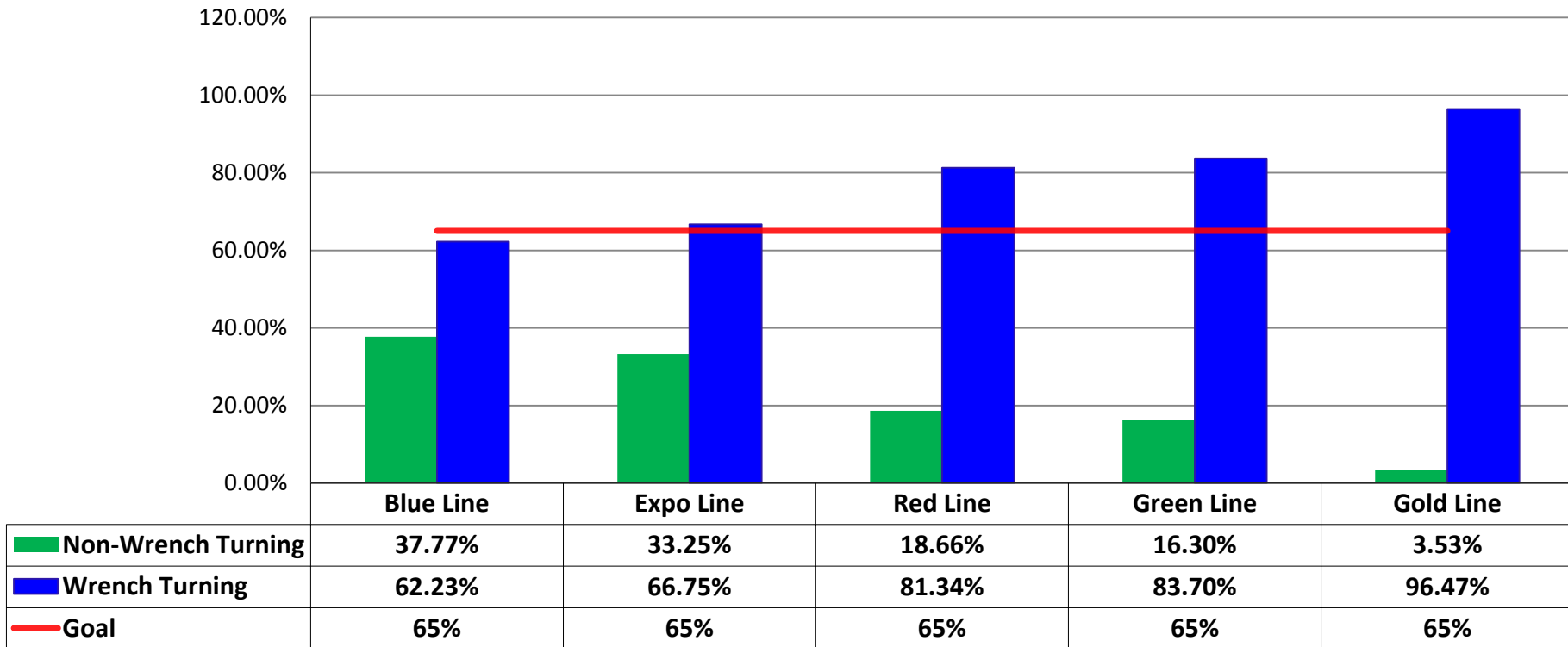
Number of Preventive Maintenance Inspections - January 2018					
Line	A level	B level	C level	D level	Totals
Blue Line	60	16	6	0	82
Expo Line	26	9	1	0	36
Red/Purple Lines	56	14	4	8	82
Green Line	7	19	2	1	29
Gold Line	38	5	8	5	56
Totals:	187	63	21	14	285

Explanation of PM Inspection levels		Miles			
Line	Type	A level	B level	C level	D level
Blue/Expo Lines	P865/P2020	5,000	15,000	30,000	60,000
Blue/Expo Lines	P2000	7,500	22,500	45,000	90,000
Red/Purple Lines	A650	7,500	22,500	45,000	90,000
Green Line	P2000	7,500	22,500	45,000	90,000
Gold Line	P2550	10,000	30,000	60,000	120,000
Gold/Expo Lines	P3010	10,000	30,000	60,000	120,000



RFS Leader Wrench Turning January 2018

RFS - Leader Wrench Turning January 2018

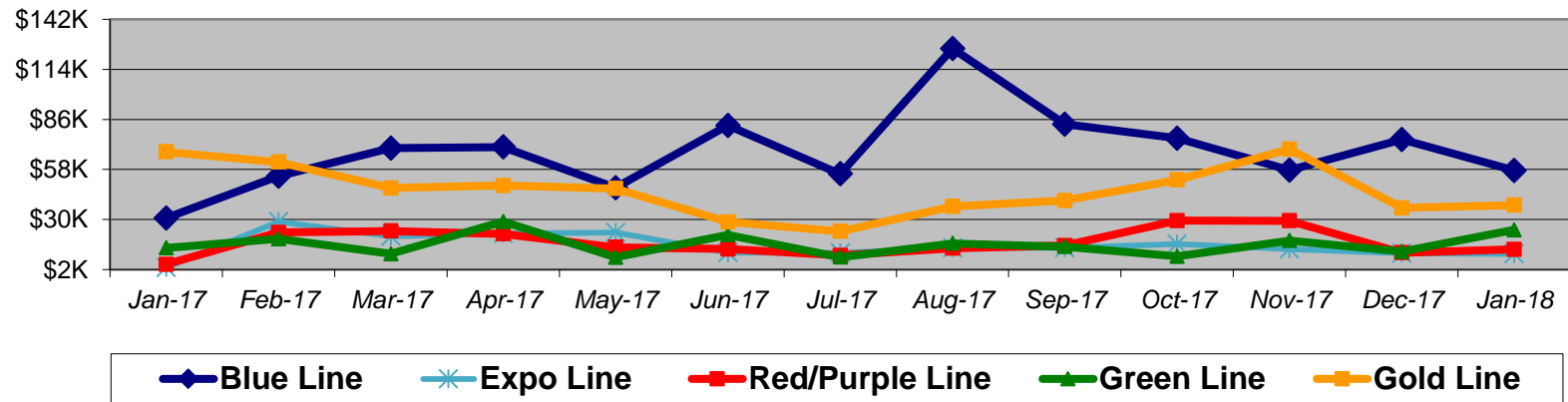


Notes: Labor hours contributed by Maint Specialist Leader, Rail Body/Paint Repair Leader, and Maint Specialist Temporary Leader

Vandalism & Graffiti Report

January 2017-2018

	Jan-17	Feb-17	Mar-17	Apr-17	May-17	Jun-17	Jul-17	Aug-17	Sep-17	Oct-17	Nov-17	Dec-17	Jan-18	13-Month Period
Blue Line	\$31K	\$54K	\$70K	\$71K	\$48K	\$83K	\$56K	\$126K	\$83K	\$75K	\$58K	\$75K	\$57K	\$886K
Expo Line	\$3K	\$29K	\$21K	\$22K	\$23K	\$11K	\$11K	\$14K	\$14K	\$16K	\$13K	\$11K	\$11K	\$200K
Red/Purple Line	\$5K	\$23K	\$24K	\$22K	\$14K	\$13K	\$10K	\$14K	\$15K	\$29K	\$29K	\$11K	\$13K	\$224K
Green Line	\$14K	\$19K	\$11K	\$29K	\$9K	\$21K	\$9K	\$17K	\$15K	\$9K	\$18K	\$12K	\$24K	\$207K
Gold Line	\$68K	\$62K	\$48K	\$49K	\$47K	\$29K	\$23K	\$37K	\$41K	\$52K	\$69K	\$37K	\$38K	\$600K
Totals:	\$121K	\$187K	\$172K	\$193K	\$141K	\$158K	\$109K	\$208K	\$168K	\$182K	\$188K	\$146K	\$144K	\$2,116K



January 2018 Vandalism & Graffiti - All Rail				
	Qty	Labor	Materials	Totals
Windows Replaced	69	\$ 17,982	\$ 38,101	\$ 56,083
Vandal Shields Replaced	542	\$ 21,010	\$ 10,118	\$ 31,128
Seats Cleaned	109	\$ 489	\$ 62	\$ 551
Seats Inserts Replaced	384	\$ 14,017	\$ 12,966	\$ 26,983
Graffiti Removal - Other	1,333	\$ 19,281	\$ 5,436	\$ 24,717
Repainting Panels	135	\$ 4,253	\$ -	\$ 4,253
Totals	2,572	\$ 77,032	\$ 66,683	\$ 143,715

Vandalism & Graffiti Pictures January 2018

Red Line



Green Line



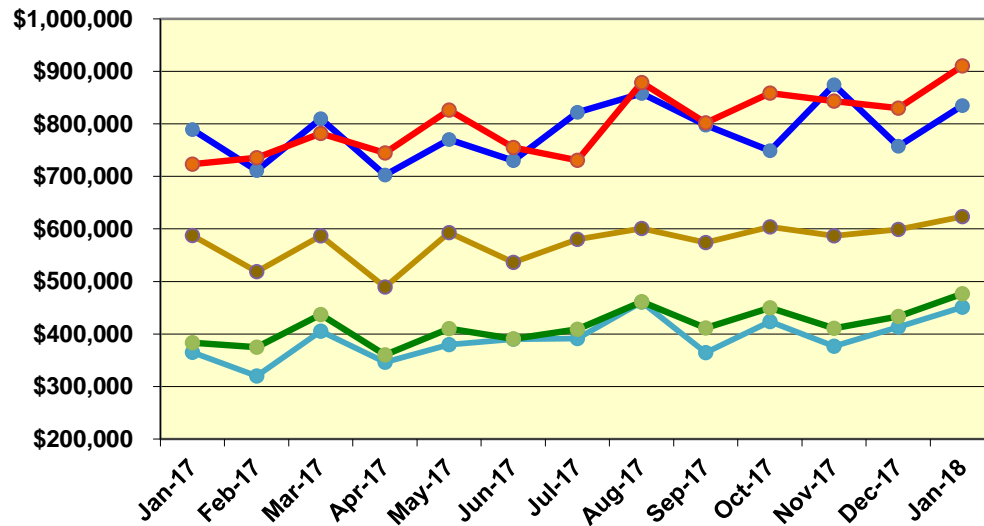
Gold Line



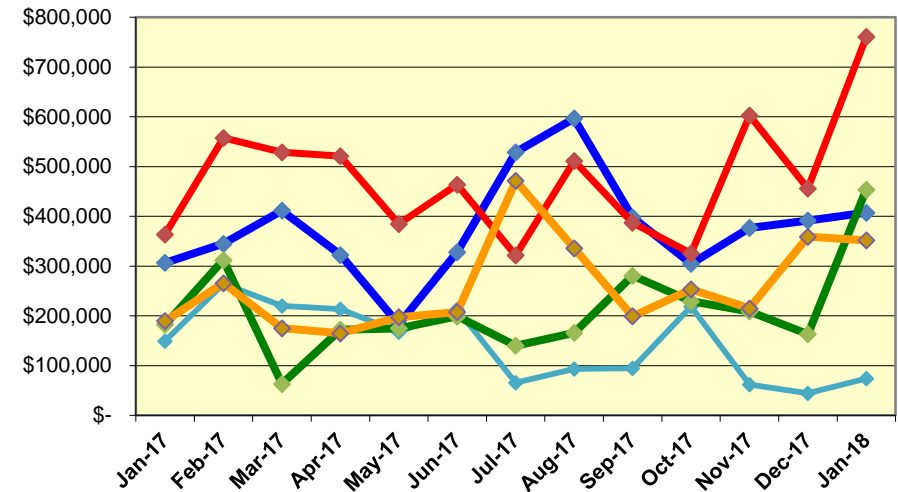
Labor and Material Costs

January 2017-2018

Labor Costs



Material Costs



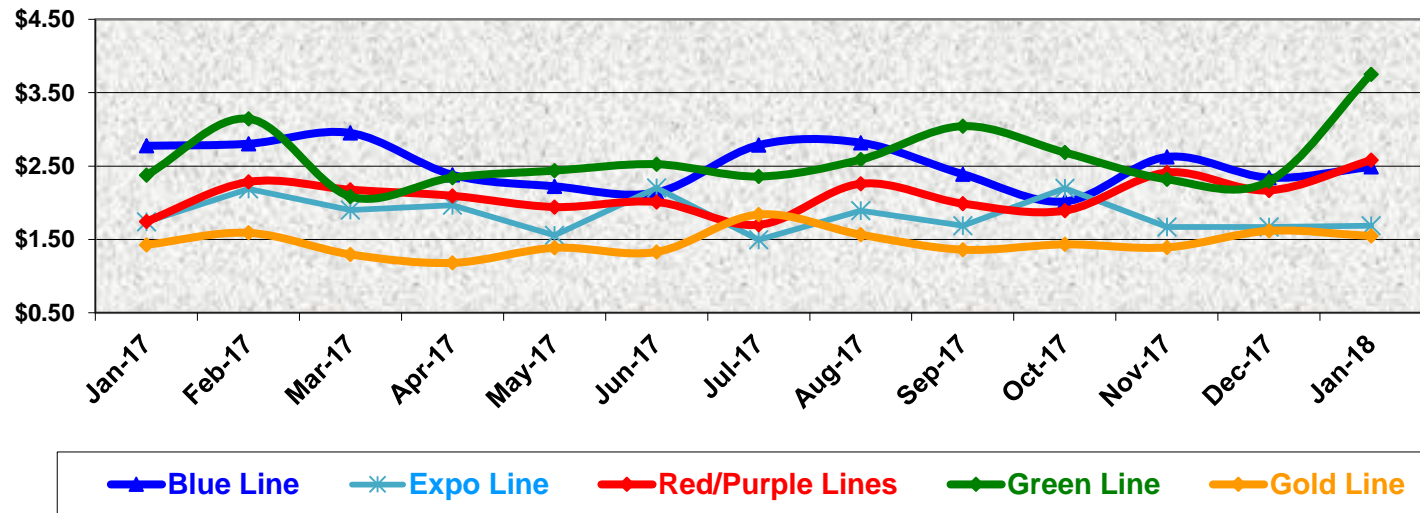
	Jan-17	Feb-17	Mar-17	Apr-17	May-17	Jun-17	Jul-17	Aug-17	Sep-17	Oct-17	Nov-17	Dec-17	Jan-18
Labor Costs													
Blue Line	\$ 788,785	\$ 711,354	\$ 810,012	\$ 702,374	\$ 770,245	\$ 730,183	\$ 822,077	\$ 857,616	\$ 797,683	\$ 749,009	\$ 874,166	\$ 757,379	\$ 834,543
Expo Line	\$ 365,354	\$ 320,019	\$ 405,656	\$ 346,398	\$ 379,871	\$ 389,878	\$ 391,095	\$ 461,075	\$ 364,430	\$ 423,859	\$ 377,003	\$ 413,302	\$ 451,261
Red/Purple Lines	\$ 723,038	\$ 735,394	\$ 781,595	\$ 744,460	\$ 826,461	\$ 754,862	\$ 730,783	\$ 878,453	\$ 801,722	\$ 858,679	\$ 843,202	\$ 829,663	\$ 909,988
Green Line	\$ 383,591	\$ 374,747	\$ 437,154	\$ 360,314	\$ 410,146	\$ 390,662	\$ 409,313	\$ 461,320	\$ 411,714	\$ 449,839	\$ 410,869	\$ 433,318	\$ 476,459
Gold Line	\$ 587,313	\$ 518,524	\$ 586,949	\$ 489,634	\$ 593,070	\$ 536,404	\$ 580,341	\$ 600,583	\$ 574,080	\$ 603,761	\$ 586,885	\$ 598,943	\$ 623,485
Totals	\$ 2,848,080	\$ 2,660,038	\$ 3,021,365	\$ 2,643,180	\$ 2,979,794	\$ 2,801,989	\$ 2,933,607	\$ 3,259,046	\$ 2,949,629	\$ 3,085,146	\$ 3,092,125	\$ 3,032,606	\$ 3,295,737

	Jan-17	Feb-17	Mar-17	Apr-17	May-17	Jun-17	Jul-17	Aug-17	Sep-17	Oct-17	Nov-17	Dec-17	Jan-18
Material Costs													
Blue Line	\$ 306,710	\$ 344,931	\$ 411,541	\$ 322,424	\$ 182,846	\$ 328,206	\$ 529,007	\$ 596,865	\$ 397,951	\$ 304,627	\$ 376,903	\$ 391,572	\$ 407,451
Expo Line	\$ 149,260	\$ 264,561	\$ 219,980	\$ 213,435	\$ 167,428	\$ 212,682	\$ 65,432	\$ 93,233	\$ 94,730	\$ 218,980	\$ 61,966	\$ 44,504	\$ 73,843
Red/Purple Lines	\$ 363,192	\$ 557,616	\$ 528,820	\$ 521,242	\$ 384,776	\$ 463,957	\$ 321,863	\$ 511,576	\$ 386,990	\$ 325,604	\$ 602,668	\$ 456,278	\$ 760,795
Green Line	\$ 182,518	\$ 312,113	\$ 63,371	\$ 172,269	\$ 174,969	\$ 199,040	\$ 140,168	\$ 165,820	\$ 280,752	\$ 229,311	\$ 208,844	\$ 163,235	\$ 453,737
Gold Line	\$ 189,520	\$ 265,930	\$ 175,047	\$ 165,012	\$ 197,220	\$ 207,555	\$ 471,378	\$ 336,025	\$ 199,318	\$ 253,138	\$ 215,172	\$ 359,058	\$ 351,690
Totals	\$ 1,191,200	\$ 1,745,150	\$ 1,398,760	\$ 1,394,383	\$ 1,107,239	\$ 1,411,440	\$ 1,527,848	\$ 1,703,519	\$ 1,359,742	\$ 1,331,660	\$ 1,465,553	\$ 1,414,648	\$ 2,047,515

Cost Per Mile January 2017-2018

Cost per mile:	Jan-17	Feb-17	Mar-17	Apr-17	May-17	Jun-17	Jul-17	Aug-17	Sep-17	Oct-17	Nov-17	Dec-17	Jan-18	Average
Blue Line	\$2.78	\$2.80	\$2.95	\$2.38	\$2.22	\$2.14	\$2.79	\$2.82	\$2.39	\$2.02	\$2.62	\$2.34	\$2.49	\$2.52
Expo Line	\$1.74	\$2.19	\$1.90	\$1.96	\$1.56	\$2.20	\$1.49	\$1.89	\$1.69	\$2.20	\$1.67	\$1.67	\$1.69	\$1.83
Red/Purple Lines	\$1.74	\$2.28	\$2.18	\$2.09	\$1.94	\$2.01	\$1.70	\$2.26	\$1.99	\$1.89	\$2.41	\$2.17	\$2.58	\$2.10
Green Line	\$2.38	\$3.15	\$2.08	\$2.34	\$2.44	\$2.52	\$2.36	\$2.59	\$3.04	\$2.68	\$2.32	\$2.29	\$3.75	\$2.61
Gold Line	\$1.43	\$1.59	\$1.29	\$1.18	\$1.38	\$1.33	\$1.84	\$1.56	\$1.36	\$1.43	\$1.39	\$1.62	\$1.55	\$1.46

Cost per Mile



ATU Absences vs. Overtime

January 2018

ABSENCE TYPE and HOURS	3941 Blue	3947 Expo	3942 Red	3943 Green	3944 Gold	3948 Monrovia	Total
BER-BEREAVEMENT	64	-	104	-	-	-	168
CTO-COMPENSATORY TIME OFF	352	254	364	218	8	250	1,446
CUT-EMPLOYEE LEAVES EARLY	2	1	1	2	1	-	6
DSL-DISABILITY LEAVE/LONG	-	184	-	568	-	256	1,008
EFH-EMG. FLOAT HOL.	-	32	40	24	16	40	152
ETO-EXCUSED TIME OFF	60	85	45	17	1	23	231
FMI-FAM IND INJURY	-	-	160	176	-	-	336
FML-FAMILY CARE LEAVE	627	24	219	248	160	352	1,631
FMS-FAMILY LEAVE SICK	128	8	104	40	48	90	418
HLF-HOLIDAY FLOATING	128	24	224	88	32	104	600
HNP-HOLIDAY NOT PAID	16	-	-	16	-	-	32
HOL-HOLIDAY LEGAL	448	96	488	104	48	256	1,440
IS-INVESTIGATIVE SUSPENSION	152	-	-	-	-	-	152
JUR-JURY DUTY	-	-	8	40	-	-	48
LC1-LABOR CODE 233	354	104	325	180	72	181	1,216
LTI-OCCPIL/LONGTRM INJ LEAVE	360	168	208	176	-	-	912
RTO-REQUESTED TIME OFF-NO PAY	17	-	10	12	-	2	41
SCK-SICK PAY	242	64	208	192	248	264	1,219
SCW-SICK WITHOUT PAY	128	144	50	137	80	52	591
SPN-SCHOOL PARTNER NOT PAID	-	-	-	-	-	8	8
SUS-DISCIPLINARY SUSPENSION	-	48	-	-	-	-	48
TAR-TARDY	1	1	2	2	0	0	7
UNP-UNION BUS PAID	-	8	-	-	-	-	8
VAC-VACATION	1,084	228	1,006	232	284	718	3,552
*TRAINING	17	111	3	229	6	35	401
Total Absence Hours	4,179	1,583	3,570	2,701	1,004	2,631	15,668
**ATU Number of Work Force (active)	106	41	106	46	17	60	376
Full Work Force hours/month	18,370	7,105	18,370	7,972	2,946	10,400	65,161
Absence as a % of Work Force	23%	22%	19%	34%	34%	25%	24%

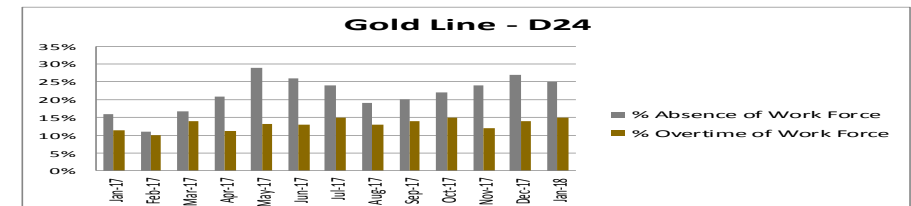
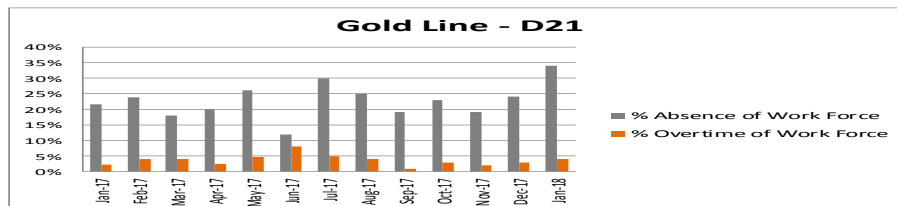
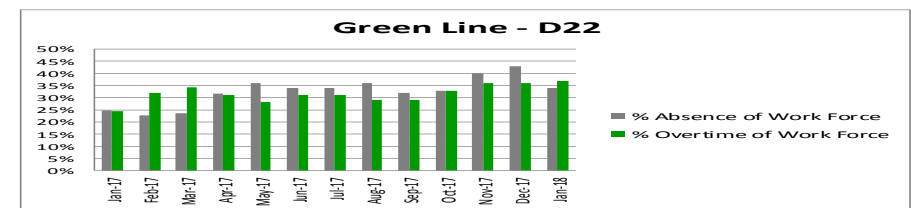
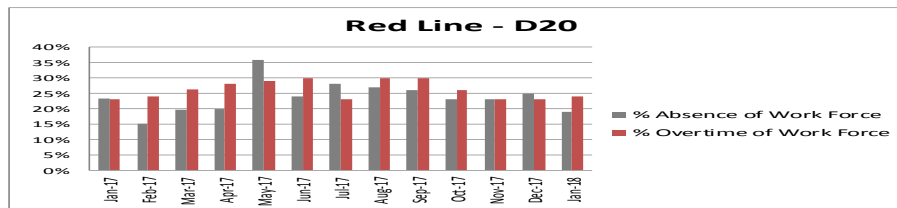
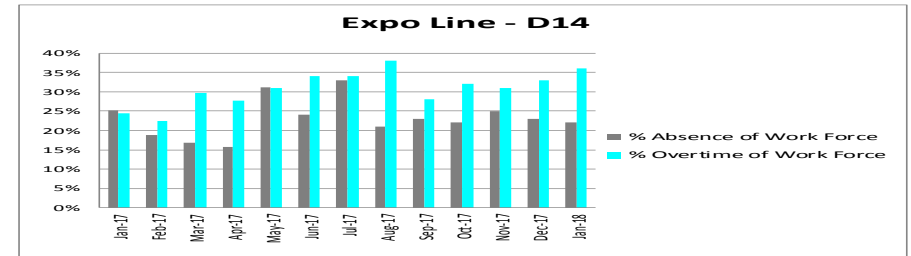
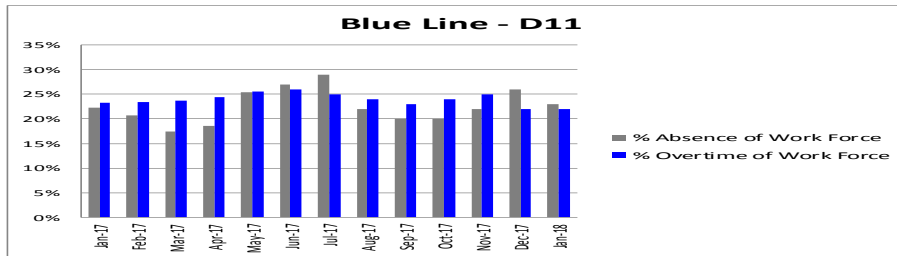
OVERTIME TYPE and HOURS	3941 Blue	3947 Expo	3942 Red	3943 Green	3944 Gold	3948 Monrovia	Total
CTB-COMPENSATORY TIME TO BANK	161	76	147	41	37	101	562
OTP-PREM OVERTIME	3,826	2,346	3,918	2,773	47	1,340	14,250
TRO OVERTIME	-	12	-	-	-	-	12
WLO-Worked Lunch Overtime	129	149	273	149	19	106	825
Total Overtime Hours	4,116	2,582	4,338	2,963	103	1,547	15,649
Overtime as a % of Work Force	22%	36%	24%	37%	4%	15%	24%

*Training hours captured by Instruction Department are added to Absences Report.

**ATU Employee Numbers from ATU Manpower Status Report (last week of the month)

Note: Overtime also covers other required activities, including Training, Component Overhaul, and Special Events.

ATU - %Absence & %Overtime of Work Force January 2017-2018



% Absence of Work Force	Jan-17	Feb-17	Mar-17	Apr-17	May-17	Jun-17	Jul-17	Aug-17	Sep-17	Oct-17	Nov-17	Dec-17	Jan-18	13-Month Average
Blue Line D11	22%	21%	17%	19%	25%	27%	29%	22%	20%	20%	22%	26%	23%	23%
Expo Line D14	25%	19%	17%	16%	31%	24%	33%	21%	23%	22%	25%	23%	22%	23%
Red Line D20	23%	15%	20%	20%	36%	24%	28%	27%	26%	23%	23%	25%	19%	24%
Green Line D22	25%	23%	24%	32%	36%	34%	34%	36%	32%	33%	40%	43%	34%	33%
Gold Line D21	21%	24%	18%	20%	26%	12%	30%	25%	19%	23%	19%	24%	34%	23%
Gold Line D24	16%	11%	17%	21%	29%	26%	24%	19%	20%	22%	24%	27%	25%	22%

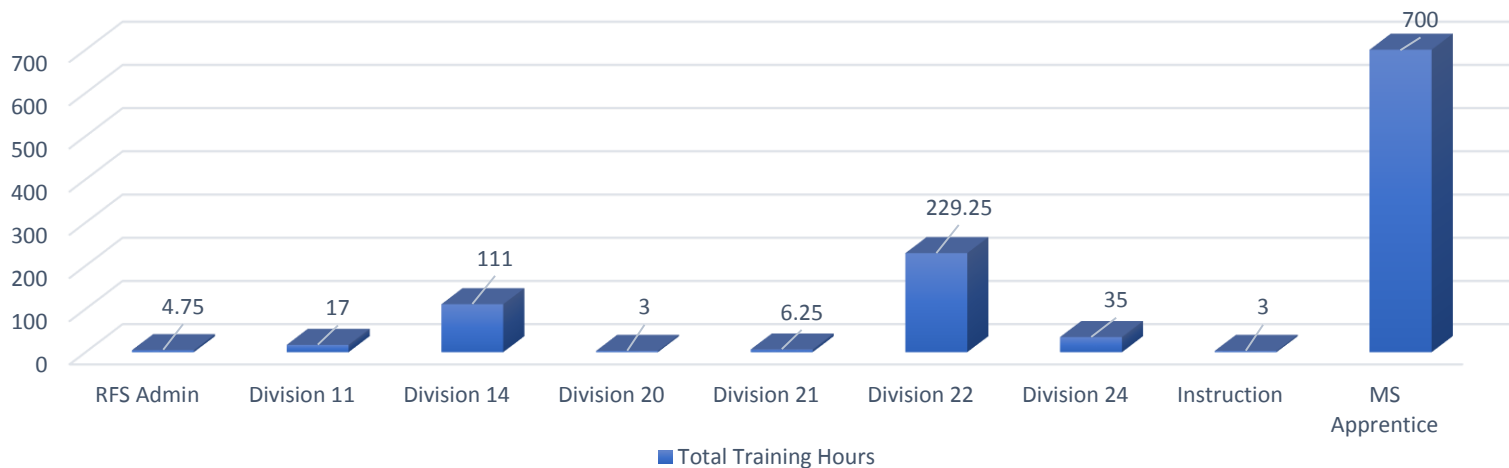
% Overtime of Work Force	Jan-17	Feb-17	Mar-17	Apr-17	May-17	Jun-17	Jul-17	Aug-17	Sep-17	Oct-17	Nov-17	Dec-17	Jan-18	13-Month Average
Blue Line D11	23%	23%	24%	24%	26%	26%	25%	24%	23%	24%	25%	22%	22%	24%
Expo Line D14	24%	22%	30%	28%	31%	34%	34%	38%	28%	32%	31%	33%	36%	31%
Red Line D20	23%	24%	26%	28%	29%	30%	23%	30%	30%	26%	23%	23%	24%	26%
Green Line D22	25%	32%	34%	31%	28%	31%	31%	29%	29%	33%	36%	36%	37%	32%
Gold Line D21	2%	4%	4%	2%	5%	2%	5%	4%	1%	3%	2%	3%	4%	3%
Gold Line D24	11%	10%	14%	11%	13%	13%	15%	13%	14%	15%	12%	14%	15%	13%

Training - RFS Instruction Department

January 2018

RFS Training Hours

Team	No. Employees	Vehicle Training	RFS Other	Metro Provided	Total Training Hours
RFS Admin	3	-	-	5	5
Division 11	3	-	-	17	17
Division 14	33	-	60	51	111
Division 20	1	-	-	3	3
Division 21	3	-	-	6	6
Division 22	37	-	-	229	229
Division 24	13	-	-	35	35
Instruction	1	-	-	3	3
MS Apprentice	7	700	-	-	700
Grand Total	101	700	60	349	1,109



Description

Vehicle Training = Training related to Fleet Maintenance

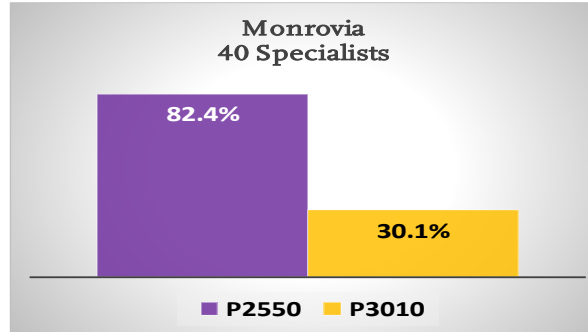
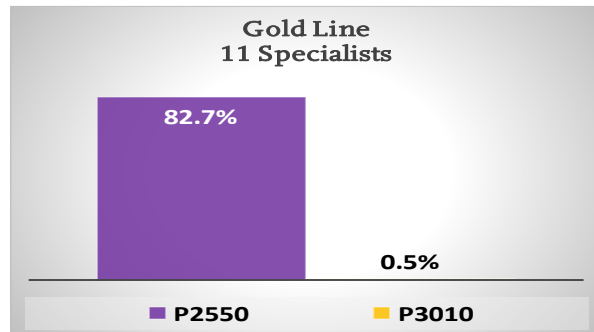
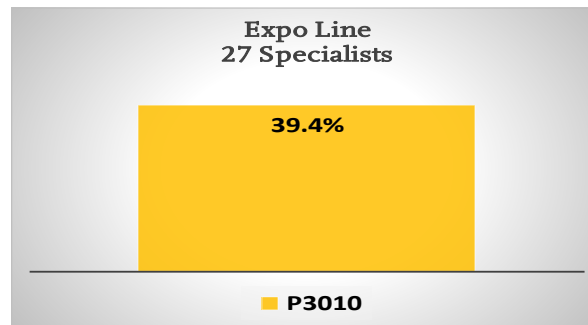
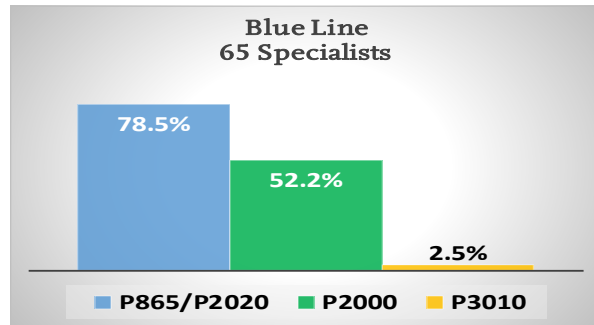
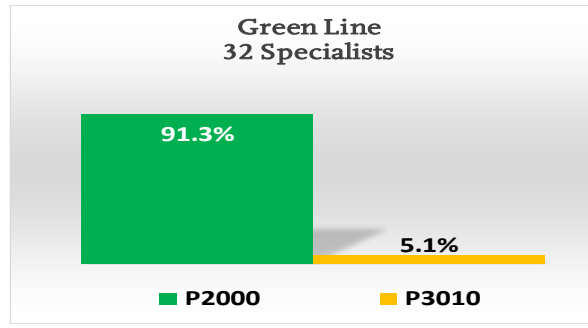
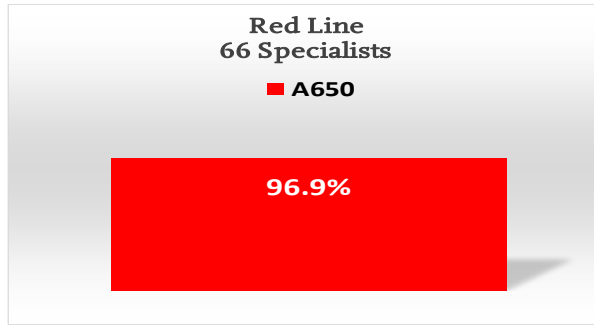
RFS Other = Training Created by RFS Instruction but not related to Vehicle Training

Metro Provided = Training provided outside RFS Training (OD&T, Transportation)

Total Training Hours = Total amount of man-hours spent by RFS in any kind of training

Maintenance Specialists Vehicle Training Levels

January 2018



Red Line	66	Specialists
Average Experience	13	Years
A650	96.9%	Training Complete

Green Line	32	Specialists
Average Experience	9.3	Years
P2000	91.3%	Training Complete
P3010	5.1%	Training Complete

Blue Line	65	Specialists
Average Experience	13.3	Years
P865/P2020	78.5%	Training Complete
P2000	52.2%	Training Complete
P3010	2.5%	Training Complete

Expo Line	27	Specialists
Average Experience	5.5	Years
P3010	39.4%	* Becoming single fleet

Gold Line	11	Specialists
Average Experience	6.4	Years
P2550	82.7%	Training Complete
P3010	0.5%	Training Complete

Gold Line - Monrovia	40	Specialists
Average Experience	7.1	Years
P2550	82.4%	Training Complete
P3010	30.1%	Training Complete

* SHIFT IN NUMBERS REPRESENT THE MOVEMENT OF EMPLOYEES WITH LESS EXPERIENCE AND TRAINING, SUCH AS APPRENTICES MOVING TO THE MAINTENANCE SPECIALIST LEVEL