



Rail Fleet Services Monthly Report March 2018

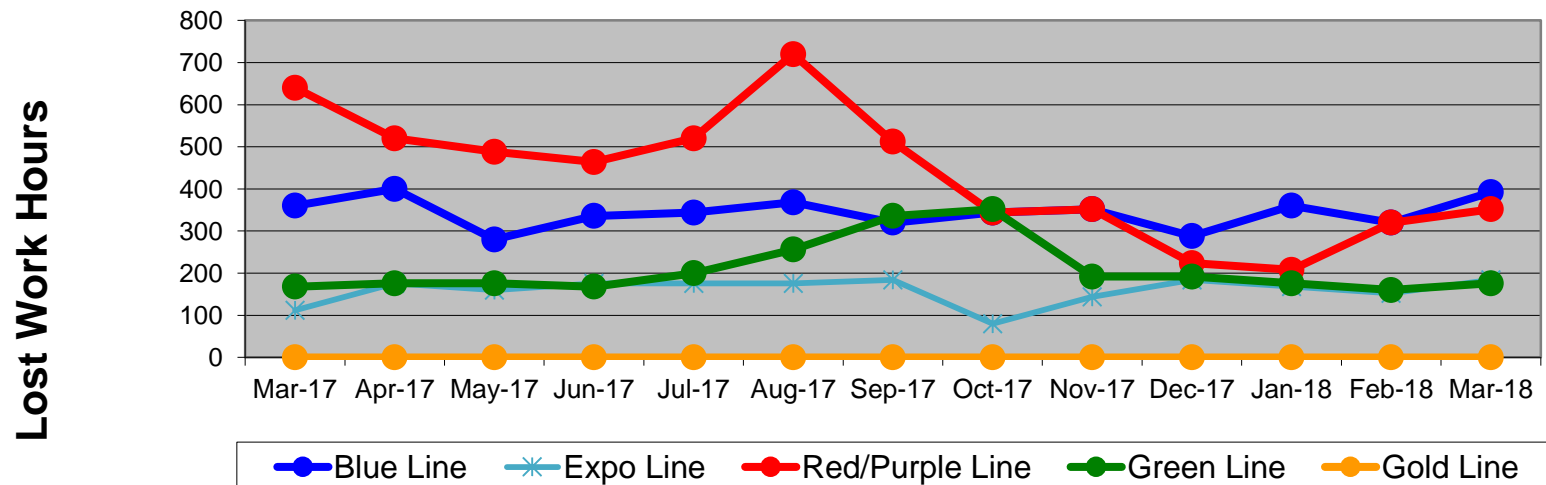
Table of Contents

•	Safety & Cleanliness		
	- Industrial Injuries	Page	3
	- Rail Vehicle Accidents & Major Incidents	Page	4
	- Car Cleanliness	Page	5
•	Customer Service		
	- Service Delivery – AM/PM Pull-Outs	Page	6
	- Vehicle Utilization – Red Line	Page	7
	- Vehicle Utilization – Blue Line & Expo Line	Page	8
	- Vehicle Utilization – Green Line & Gold Line	Page	9
	- All Train Delay Incidents	Page	10
	- Mean Miles Between Failures (Major) & MMBF by Division	Page	11-12
	- Mileage Between Data Range (by month)	Page	13
•	Business Processes		
	- Top Incident Categories	Page	14
	- Major Incidents	Page	15
	- Preventive Maintenance Compliance	Page	16
	- RFS Leader Wrench Turning	Page	17
•	Finance		
	- Vandalism & Graffiti Costs	Page	18
	- Vandalism & Graffiti Pictures	Page	19
	- Labor & Material Costs	Page	20
	- Cost per mile	Page	21
	- Absence vs. Overtime/ %Absence and %Overtime of ATU	Page	22-23
•	Growth		
	- RFS Instruction Department Activities	Page	24-25

Industrial Injuries – Lost Work Hours March 2017-2018

	Mar-17	Apr-17	May-17	Jun-17	Jul-17	Aug-17	Sep-17	Oct-17	Nov-17	Dec-17	Jan-18	Feb-18	Mar-18	13-Month Period
Blue Line	360	400	280	336	344	368	320	344	352	288	360	320	392	4,464
Expo Line	112	176	160	176	176	176	184	80	144	184	168	152	184	2,072
Red/Purple Line	640	520	488	464	520	720	512	344	352	224	208	320	352	5,664
Green Line	168	176	176	168	200	256	336	352	192	192	176	160	176	2,728
Gold Line	0	0	0	0	0	0	0	0	0	0	0	0	0	0
Totals	1,280	1,272	1,104	1,144	1,240	1,520	1,352	1,120	1,040	888	912	952	1,104	14,928

Industrial Injuries (lost work hours)



Rail Vehicle Accidents & Major Incidents

March 2017-2018

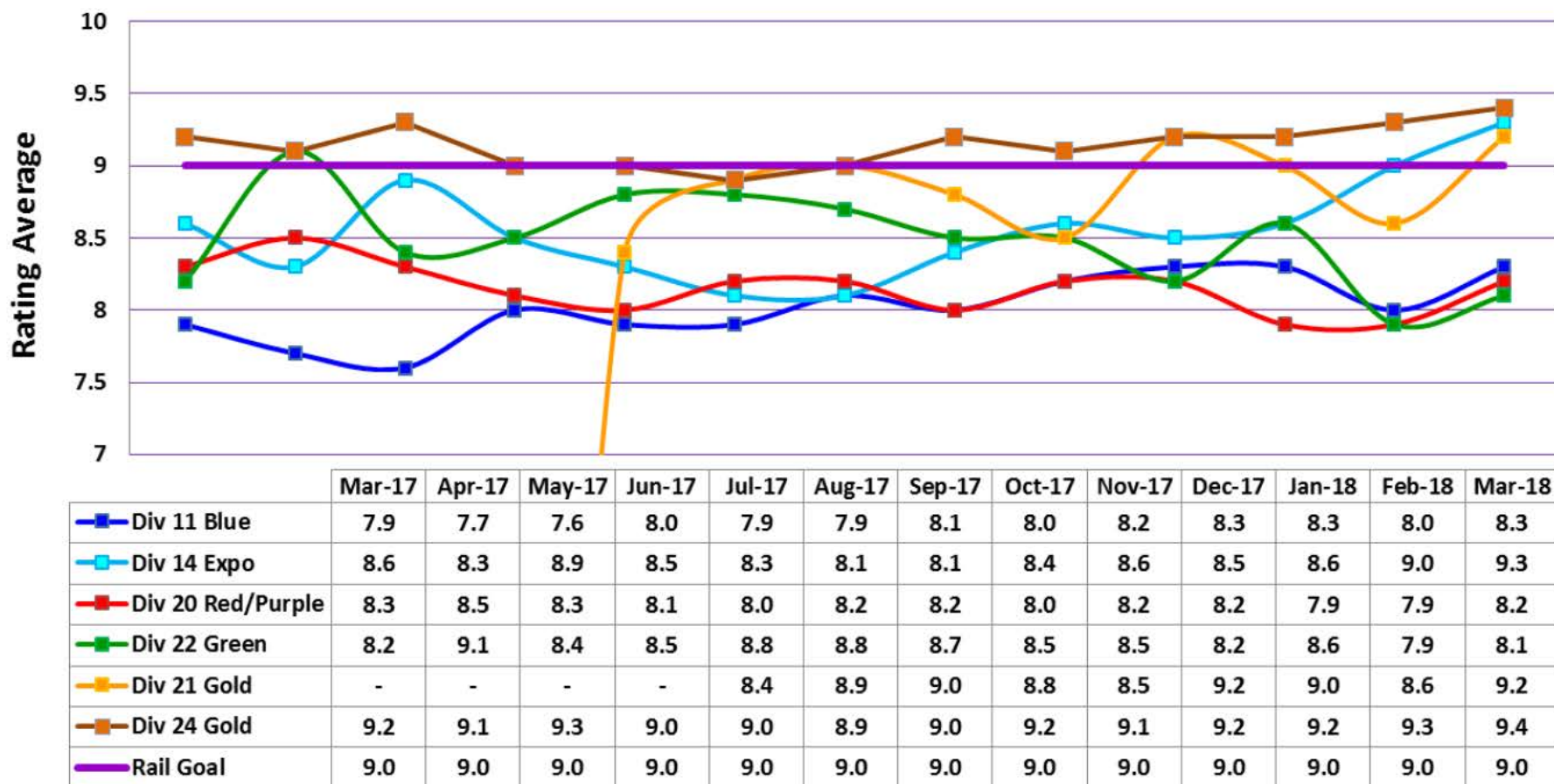
Repair Costs	Mar-17	Apr-17	May-17	Jun-17	Jul-17	Aug-17	Sep-17	Oct-17	Nov-17	Dec-17	Jan-18	Feb-18	Mar-18	13-Month Period
Blue Line	\$1,427	\$2,586	\$0	\$15,084	\$632	\$268	\$3,683	\$31,202	\$1,016	\$344	\$0	\$120	\$561	\$56,923
Expo Line	\$0	\$1,420	\$0	\$0	\$0	\$191	\$0	\$25,571	\$597	\$321	\$0	\$563	\$8,890	\$37,553
Red/Purple Line	\$0	\$0	\$0	\$0	\$0	\$0	\$0	\$0	\$0	\$0	\$0	\$741	\$0	\$741
Green Line	\$0	\$334	\$0	\$0	\$0	\$0	\$0	\$0	\$0	\$0	\$0	\$0	\$11,777	\$12,111
Gold Line	\$1,871	\$191	\$2,692	\$0	\$0	\$0	\$1,343	\$5,751	\$0	\$680	\$0	\$0	\$0	\$12,528
Totals	\$3,298	\$4,531	\$2,692	\$15,084	\$632	\$459	\$5,026	\$62,524	\$1,613	\$1,345	\$0	\$1,424	\$21,228	\$119,856

Rail Vehicle Accident Costs - March 2018				
Date	Incident #	Problem Code	Incident Description	Repair Cost
Metro Blue Line				
3/5/18	2977339	Train vs. Pedestrian	A 10-72 was reported at Imperial Pedestrian Crossing.	\$ 561
Metro Blue Line Total				\$ 561
Metro Expo Line				
3/2/18	2976214	Train vs. Vehicle	A 10-73 was reported at Denker Grade Crossing, Track 4, SB. Car made a left turn in front of train.	\$ 3,890
3/5/18	2977361	Train vs. Vehicle	A 10-73 was reported at 26th St. Crossing,	\$ 5,000
Metro Expo Line Total				\$ 8,890
Metro Gold Line				
3/26/18	2985816	Train vs. Other	A 10-71 was reported, damaged skirt.	\$ -
3/29/18	2985894	Train vs. Other	A 10-71 was reported, while the train was entering Highland Park Station SB, the mirror hit an individual in the head on the platform.	\$ -
Metro Gold Line Total				\$ -
Metro Green Line				
3/13/18	2980563	Train vs. Other	A 10-71 was reported, tire came on to the ROW making contact with train.	\$ 11,777
Metro Green Line Total				\$ 11,777
Grand Total				\$ 21,228
10-71 = Train vs. Object/ 10-72 = Train vs. Pedestrian/ 10-73 = Train vs. Vehicle/ 10-74 = Train vs. MTA Vehicle/ 10-75 = Derailment				

Rail Vehicle – Car Cleanliness

March 2017-2018

Car Cleanliness Report



Service Delivery March 2018

Blue Line Fleet Size: 91

<u>Pull Out</u>	<u>Vehicles Required</u>	<u>Average Available</u>	<u>% Up (Down)</u>
Weekday:	66	66	100%
Weekend:	26	47	181%

Monthly Mileage: 502,702

Expo Line Fleet Size: 55

<u>Pull Out</u>	<u>Vehicles Required</u>	<u>Average Available</u>	<u>% Up (Down)</u>
Weekday:	42	43	102%
Weekend:	30	38	127%

Monthly Mileage: 315,198

Red/Purple Line Fleet Size: 98

<u>Pull Out</u>	<u>Vehicles Required</u>	<u>Average Available</u>	<u>% Up (Down)</u>
Weekday:	64	74	116%
Weekend:	40	64	160%

Monthly Mileage: 609,736

Green Line Fleet Size: 35

<u>Pull Out</u>	<u>Vehicles Required</u>	<u>Average Available</u>	<u>% Up (Down)</u>
Weekday:	20	26	130%
Weekend:	8	23	288%

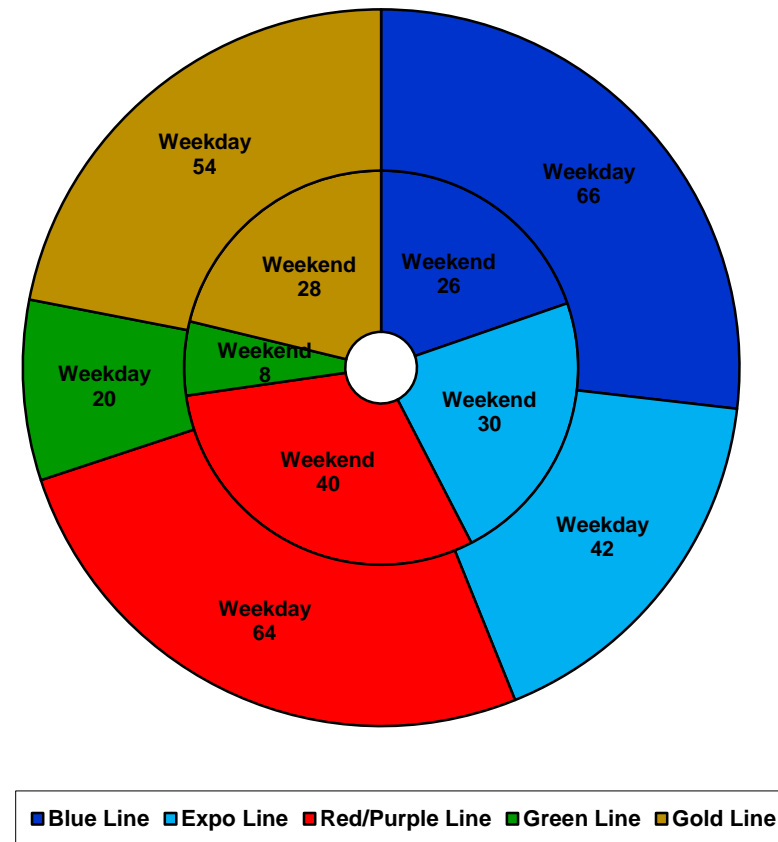
Monthly Mileage: 212,951

Gold Line Fleet Size: 71

<u>Pull Out</u>	<u>Vehicles Required</u>	<u>Average Available</u>	<u>% Up (Down)</u>
Weekday (Div 21):	10	10	100%
Weekday (Div 24):	44	45	102%
Weekend (Div 24):	28	39	139%

***Monthly Mileage: 628,393**

*** Gold Line monthly mileage includes Division 21 and 24.**

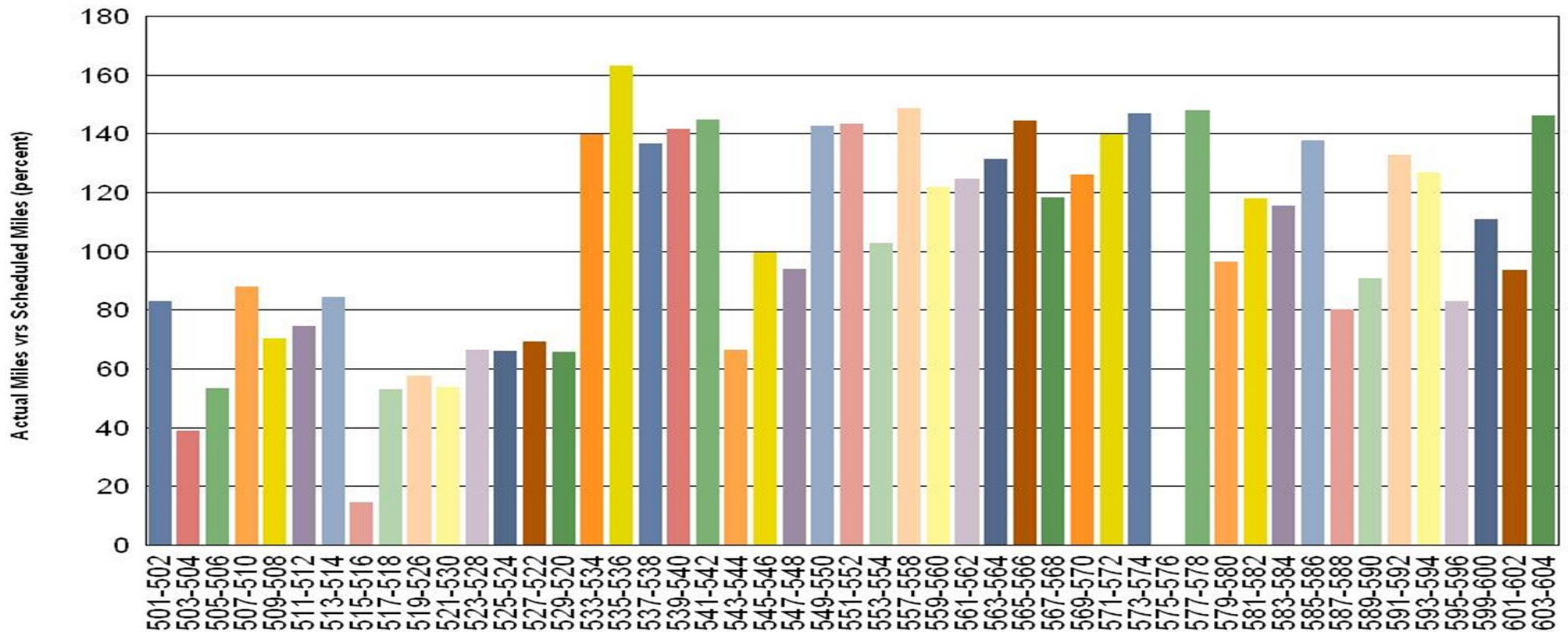


NOTES: Standby trains not included in vehicle requirements

Vehicle Utilization

March 2018

Metro Red/Purple Line (98 Cars)



Red/Purple Line:

The following cars were in service below 40% due to:

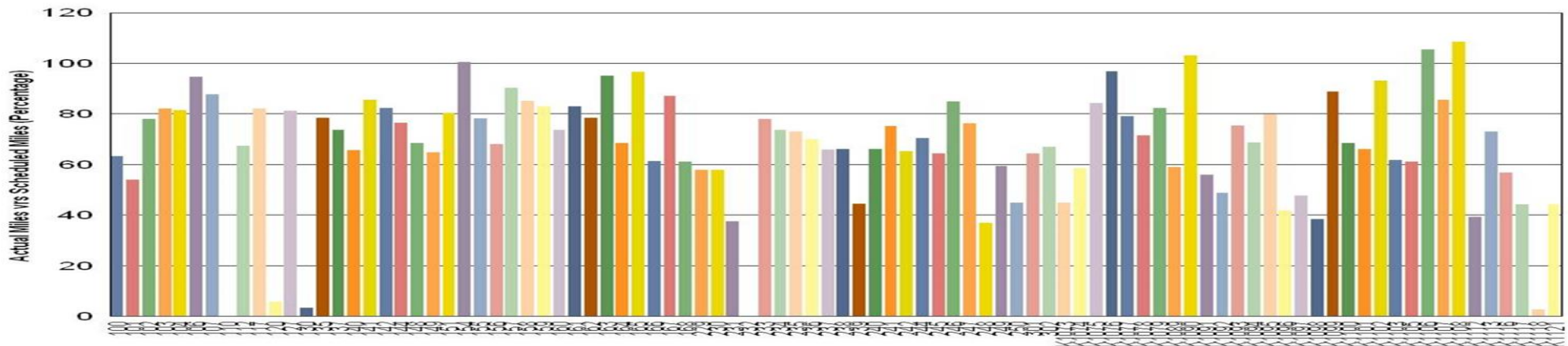
Car # 503-504 – Propulsion Fault

Car # 515-516 – Friction Brake Overhaul

Car # 575-576 – Interior Renovation Campaign

Vehicle Utilization March 2018

Metro Blue Line (91 Cars)



Blue Line: The following cars were in service below 40% due to:

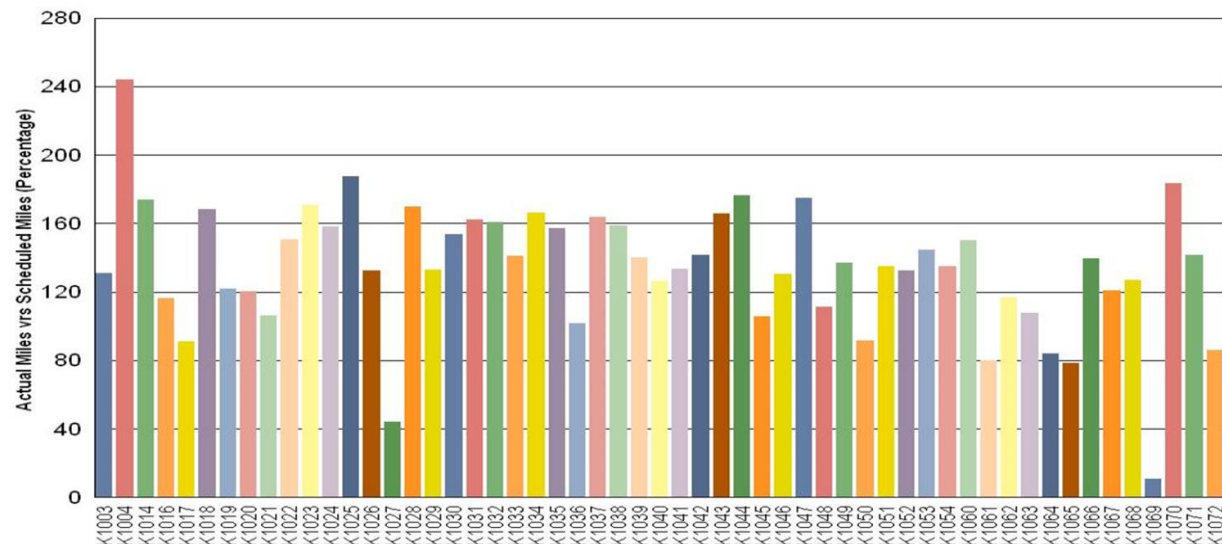
- Car # 110** – Marvel Movie Production
- Car # 120** – Marvel Movie Production
- Car # 130** – Marvel Movie Production
- Car # 231** – Door Operator Assembly Overhaul
- Car # 232** – Off the Property for Midlife Overhaul
- Car # 248** – Door Operator Assembly Overhaul
- Car # K1098** – EN Modification/ NCR's/ In-house Training
- Car # K1112** – Still at Green Line due to the Crenshaw/ LAX Mainline Construction Tie In
- Car # K1118** – Still at Green Line due to the Crenshaw/ LAX Mainline Construction Tie In

Expo Line: The following car was in service below 40% due to:

- Car # K1069** – Accident Damaged Skirts (currently reinstalling)



Metro Expo Line (55 Cars)



Note: Percentage includes an average 4% mileage deduction for yard mileage and vehicle testing.

Vehicle Utilization

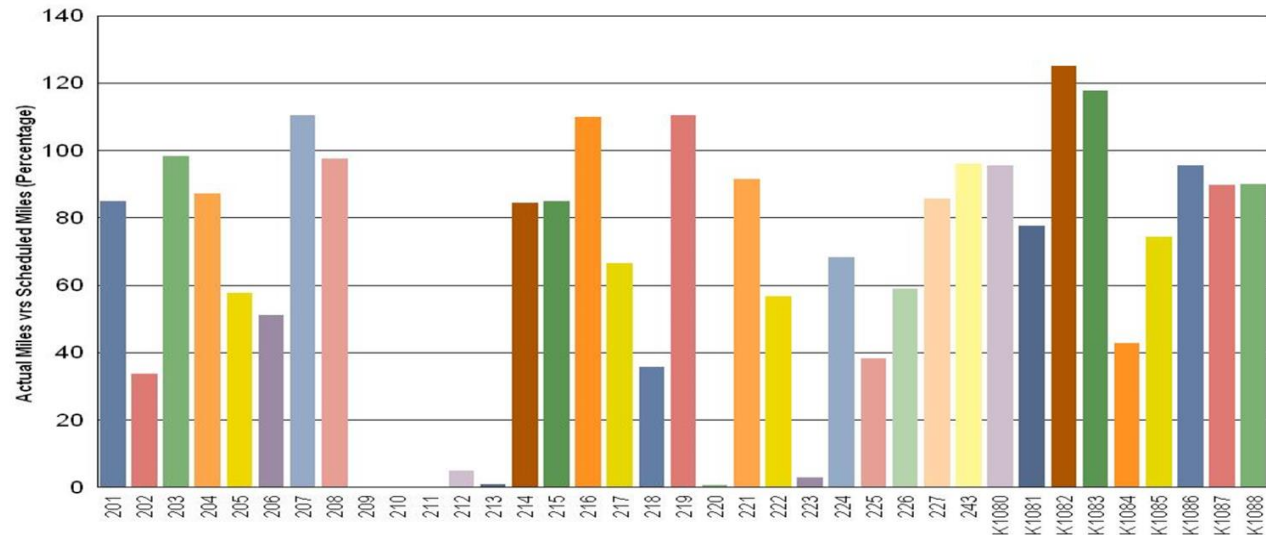
March 2018

Metro Green Line (35 Cars)

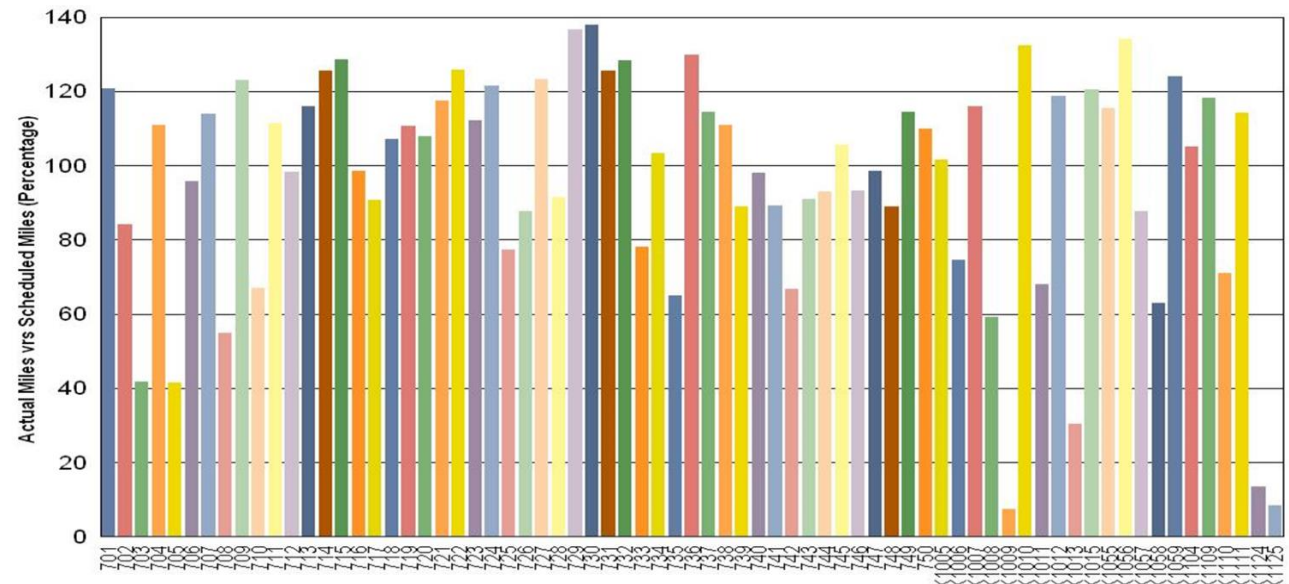
Green Line:

The following cars were in service below 40% due to:

- Car # 202 – Friction Brakes Repair
- Car # 209 – Friction Brakes Repair
- Car # 210 – Pantograph Damage Repair
- Car # 211 – Off the Property for Midlife Overhaul
- Car # 212 – Off the Property for Midlife Overhaul
- Car # 213 – Remained at Green Line during Tie in
- Car # 218 – Auxiliary Inverter Repair
- Car # 220 – Remained at Green Line during Tie in
- Car # 223 – ATP Repair
- Car # 225 – Interior/ Exterior Rehab



Metro Gold Line (71 Cars)

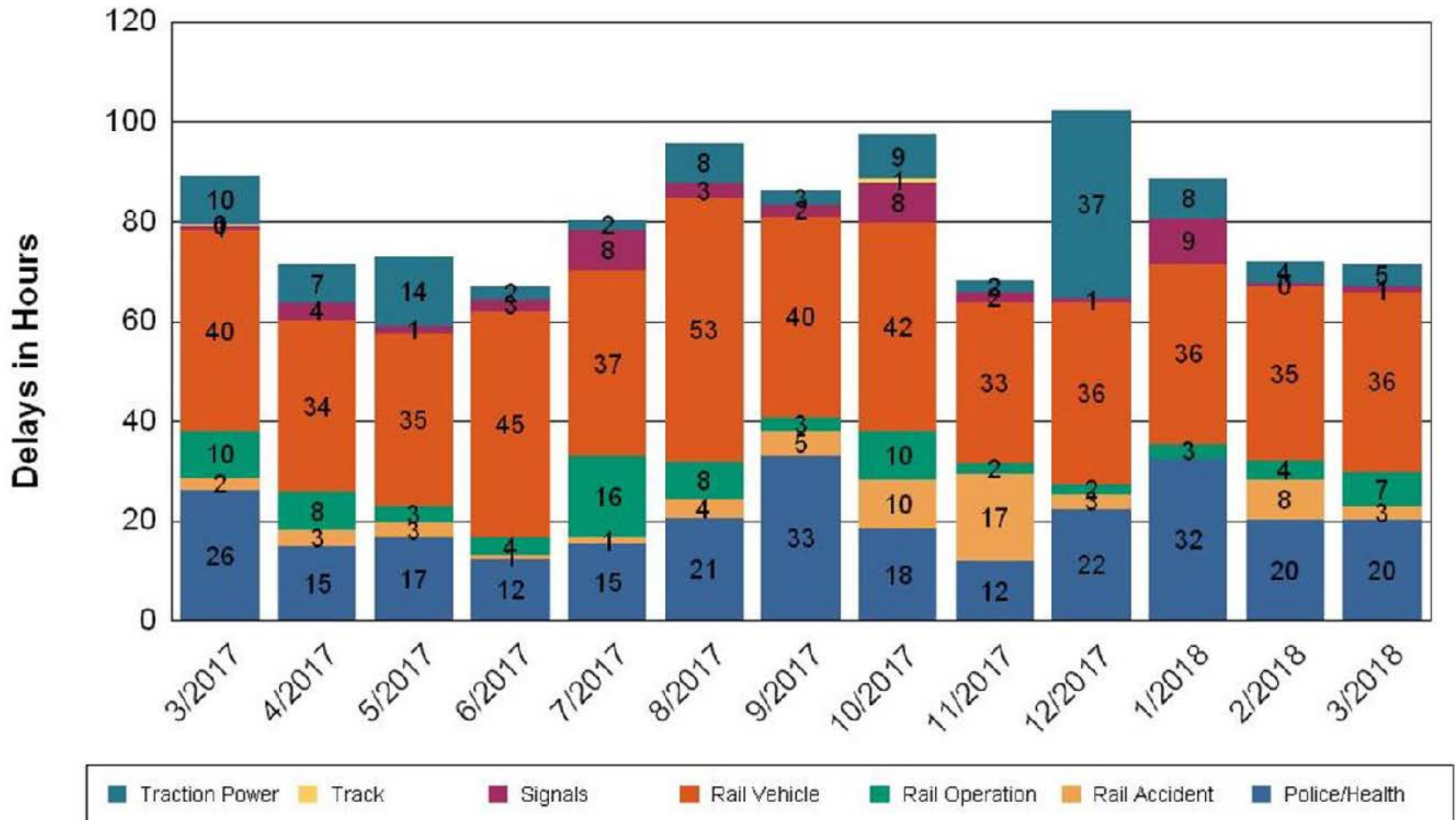


•Percentage includes an average 4% mileage deduction for yard mileage and vehicle testing.

All Train Delays (Hours) March 2017-2018

All Train Delays

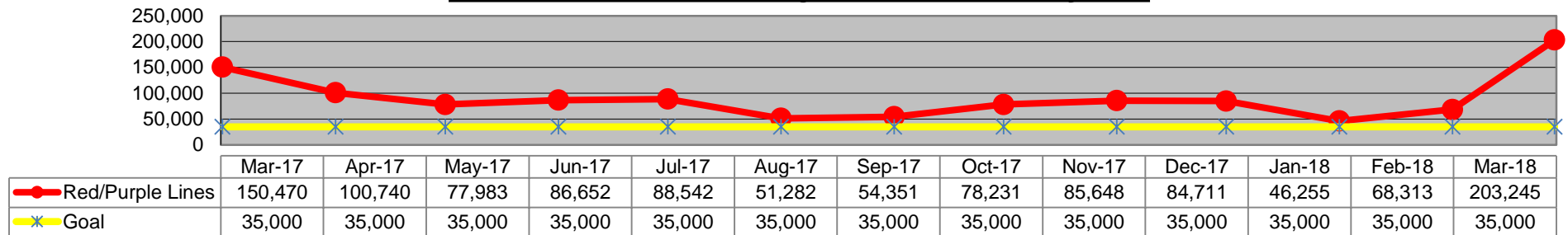
Totals Include the delay to all trains involved (not just the primary incident)



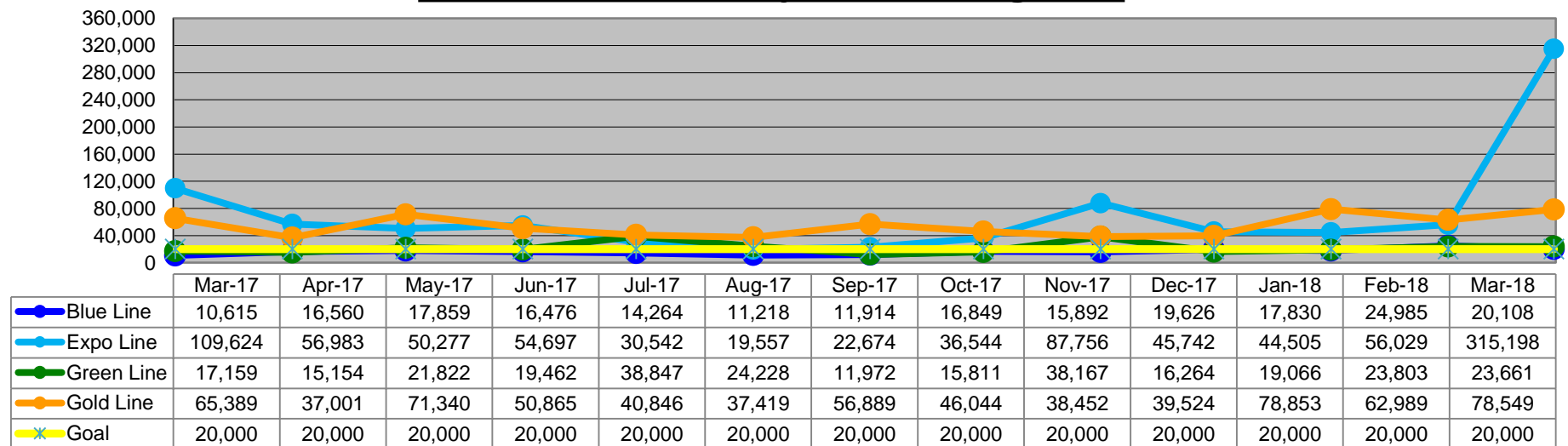
Mean Miles Between Major Failures (MMBF)

March 2017-2018

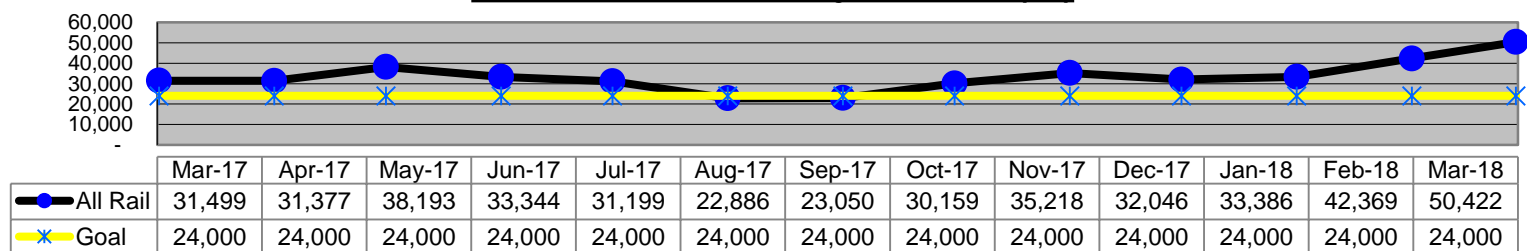
Mean Miles Between Major Failures - Heavy Rail



Mean Miles Between Major Failures - Light Rail



Mean Miles Between Major Failures (all)

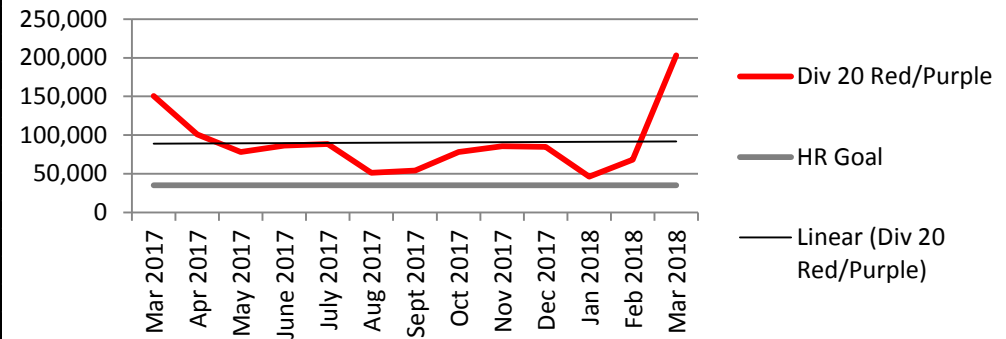


MMBF by Division

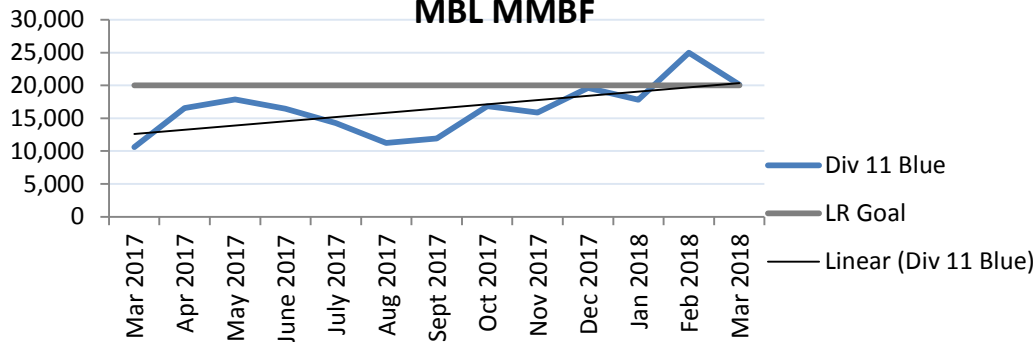
March 2017-2018

Month	Div 11 Blue	Div 14 Expo	Div 20 Red/Purple	Div 22 Green	Div 21/24 Gold	LR Goal	HR Goal
Mar 2017	10,615	109,624	150,470	17,159	65,389	20,000	35,000
Apr 2017	16,560	56,983	100,740	15,154	37,001	20,000	35,000
May 2017	17,859	50,277	77,983	21,822	71,340	20,000	35,000
June 2017	16,476	54,697	86,652	19,462	50,865	20,000	35,000
July 2017	14,264	30,542	88,542	38,847	40,846	20,000	35,000
Aug 2017	11,218	19,557	51,282	24,228	37,419	20,000	35,000
Sept 2017	11,914	22,674	54,351	11,972	56,889	20,000	35,000
Oct 2017	16,849	36,544	78,231	15,811	46,044	20,000	35,000
Nov 2017	15,892	87,756	85,648	38,167	38,452	20,000	35,000
Dec 2017	19,626	45,742	84,711	16,264	39,524	20,000	35,000
Jan 2018	17,830	44,505	46,255	19,066	78,853	20,000	35,000
Feb 2018	24,985	56,029	68,313	23,803	62,989	20,000	35,000
Mar 2018	20,108	315,198	203,245	23,661	78,549	20,000	35,000

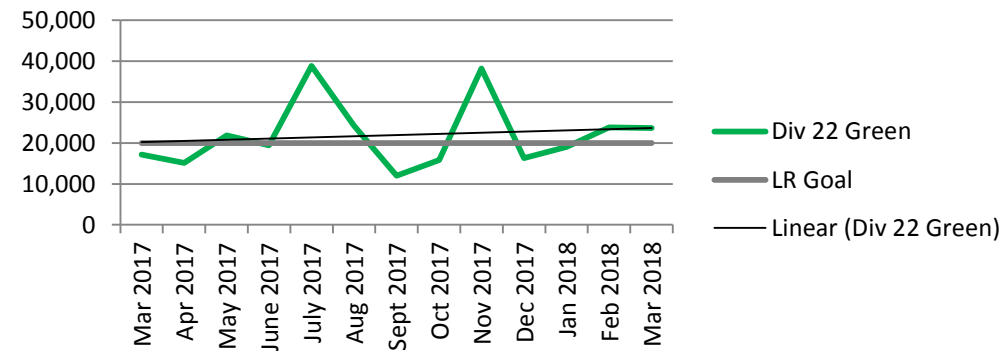
MRL MMBF



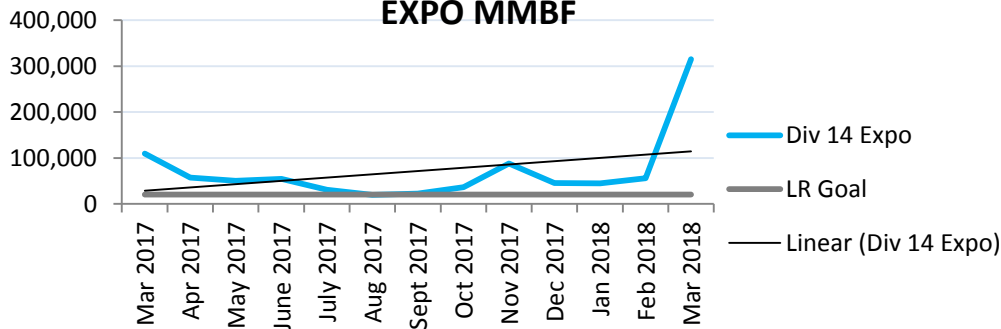
MBL MMBF



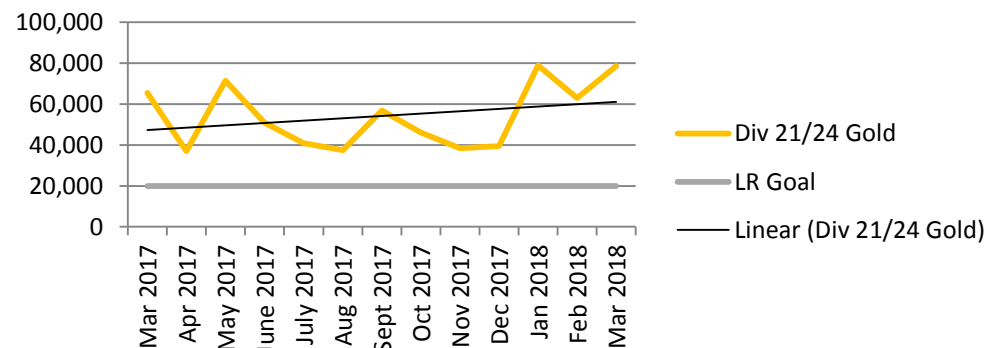
MGL MMBF



EXPO MMBF

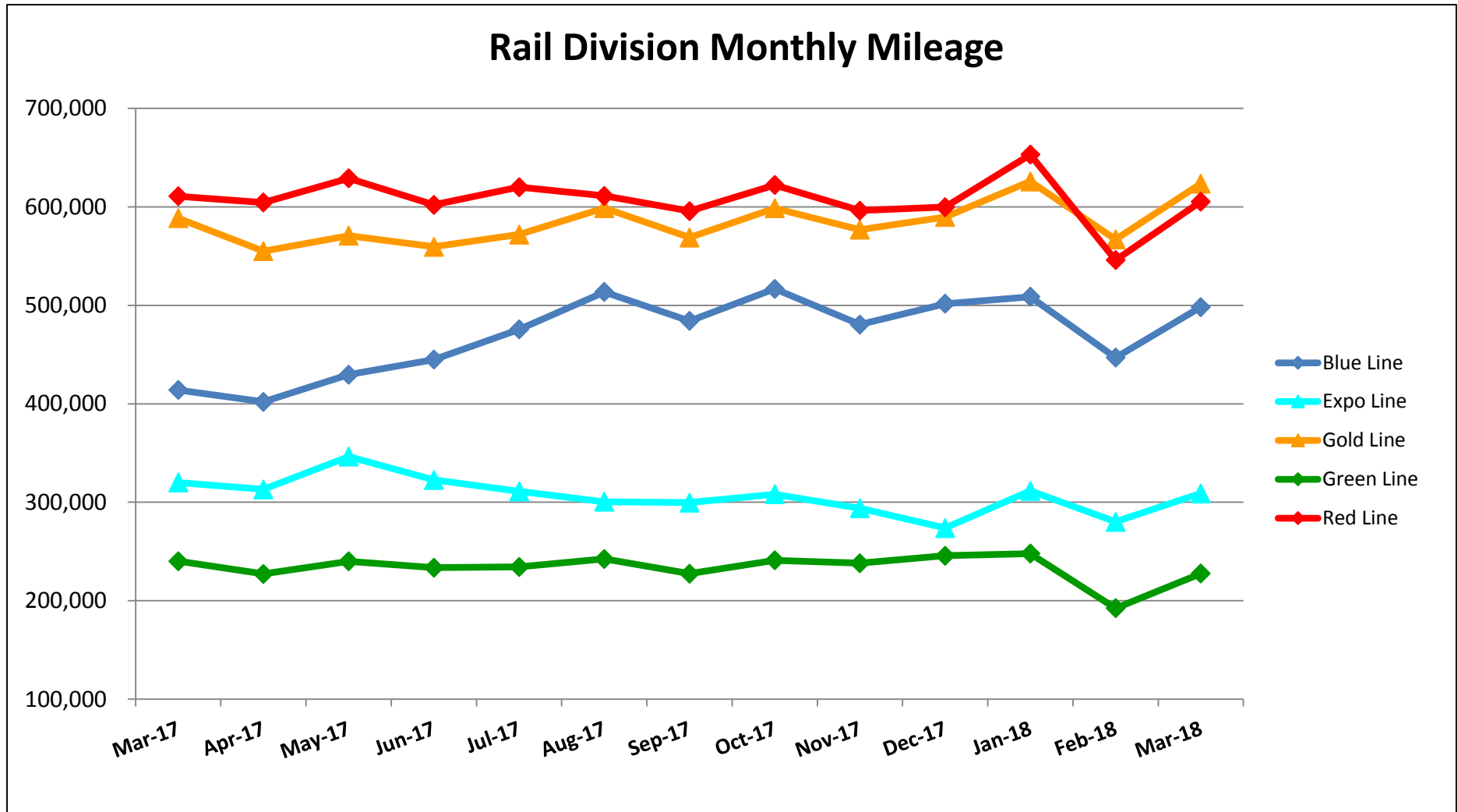


MGDL MMBF



Mileage Between Data Range (by month)

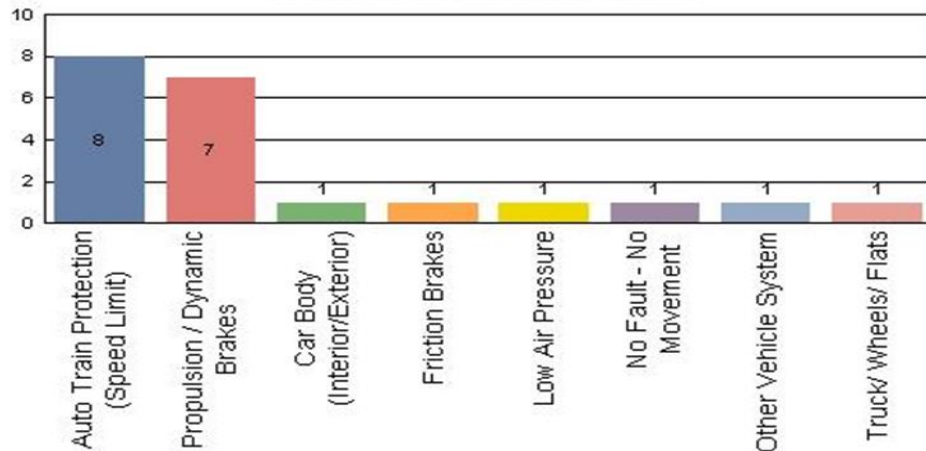
March 2017-2018



Top Incident Categories March 2018

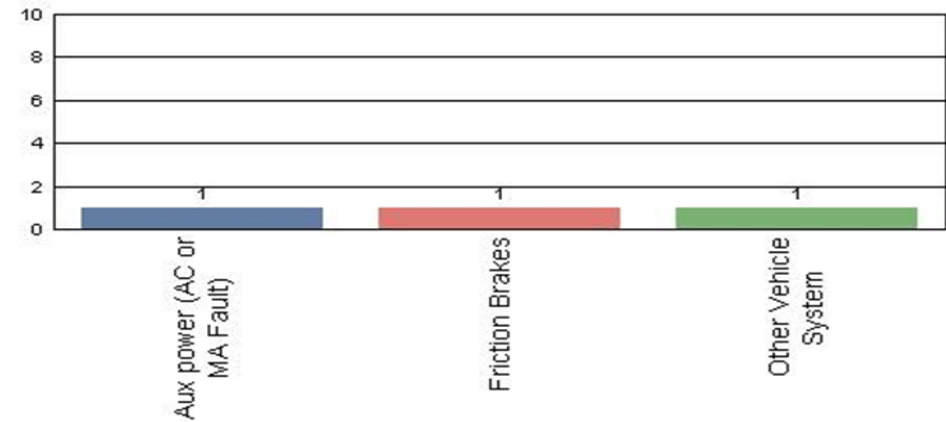
Metro Blue Line (Div 11)

Top Incident Categories



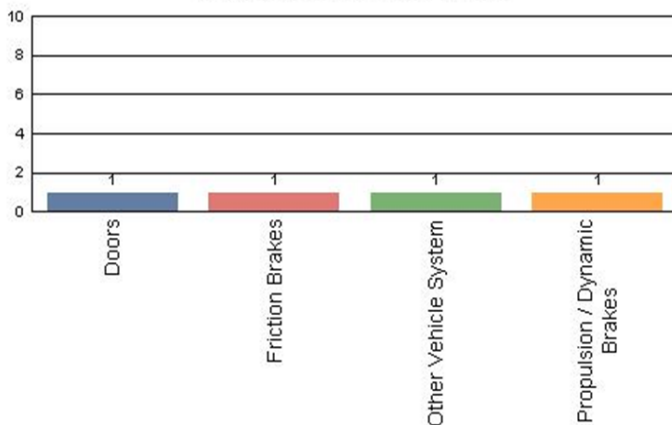
Metro Red/Purple Line (Div 20)

Top Incident Categories



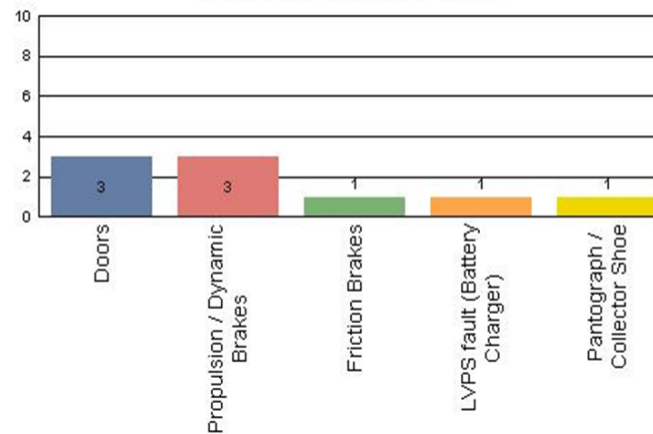
Metro Expo Line (Div 14)

Top Incident Categories



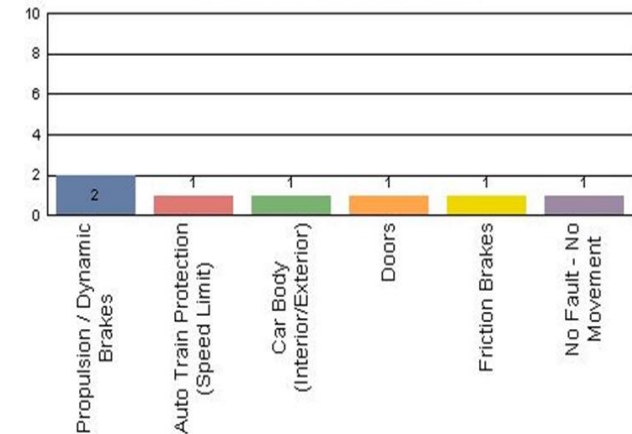
Metro Green Line (Div 22)

Top Incident Categories



Metro Gold Line (Div 21 & Div 24)

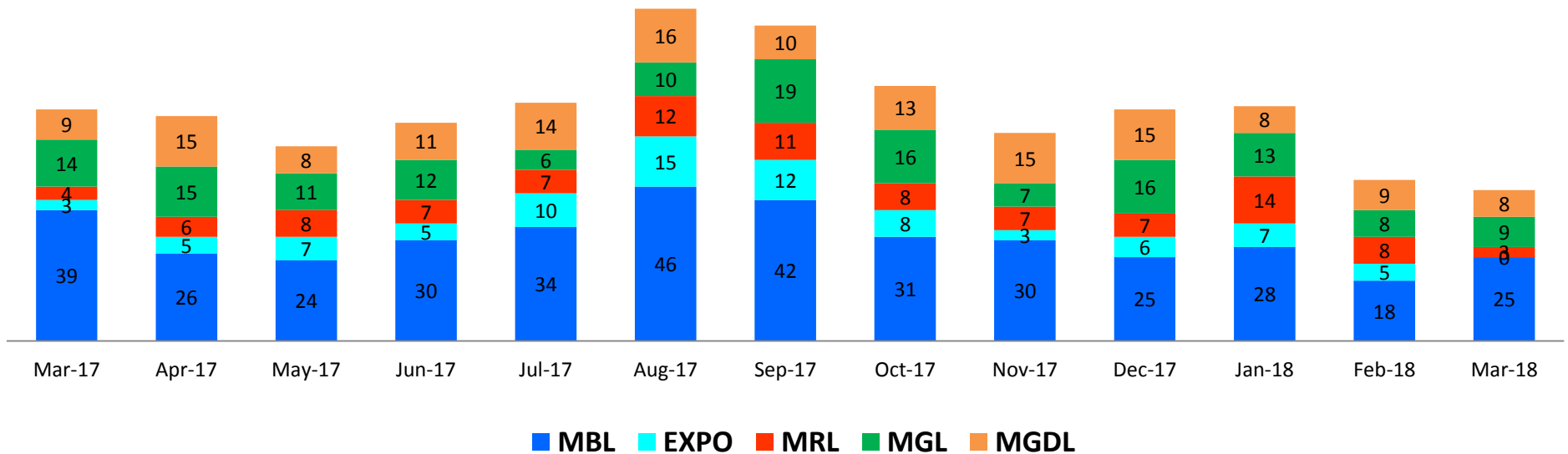
Top Incident Categories



Major Incidents

March 2017-2018

Numbers of Major System Failures (by Line)



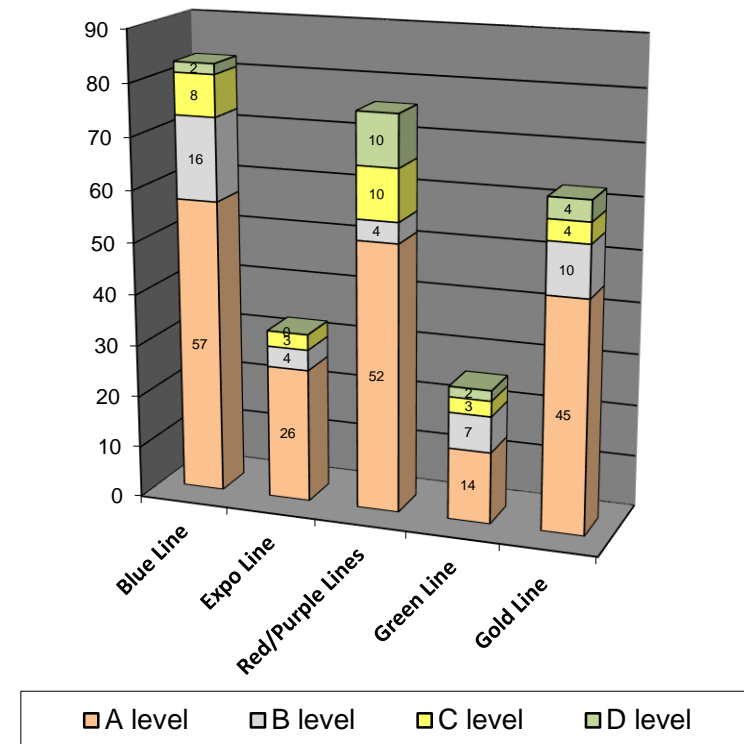
Preventive Maintenance Compliance

March 2017-2018

PM Compliance	Mar-17	Apr-17	May-17	Jun-17	Jul-17	Aug-17	Sep-17	Oct-17	Nov-17	Dec-17	Jan-18	Feb-18	Mar-18
Blue Line	100%	100%	100%	100%	100%	100%	100%	100%	100%	100%	100%	100%	100%
Expo Line	100%	100%	100%	100%	100%	100%	100%	100%	100%	100%	100%	100%	100%
Red/Purple Lines	100%	100%	100%	100%	100%	100%	100%	100%	100%	100%	100%	100%	100%
Green Line	100%	100%	100%	100%	100%	100%	100%	100%	100%	100%	100%	100%	100%
Gold Line	100%	100%	100%	98%	100%	100%	100%	100%	100%	100%	99%	100%	100%

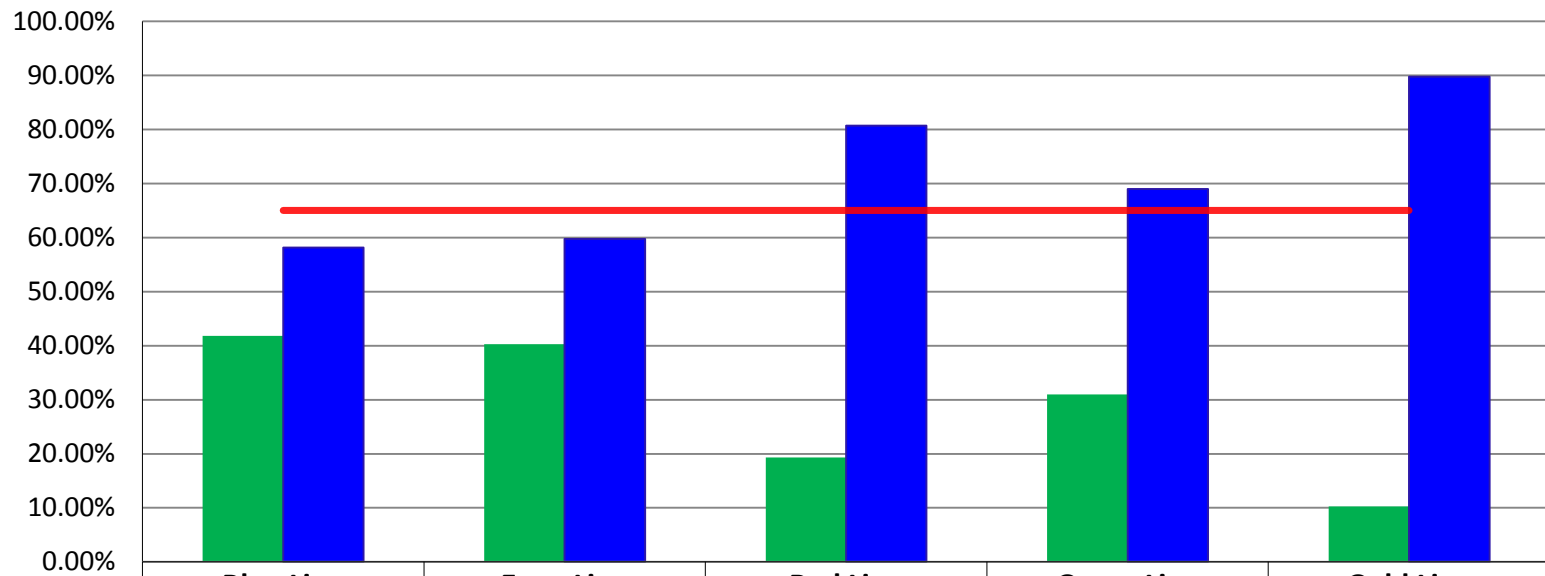
Number of Preventive Maintenance Inspections - March 2018					
Line	A level	B level	C level	D level	Totals
Blue Line	57	16	8	2	83
Expo Line	26	4	3	0	33
Red/Purple Lines	52	4	10	10	76
Green Line	14	7	3	2	26
Gold Line	45	10	4	4	63
Totals:	194	41	28	18	281

Explanation of PM Inspection levels		Miles			
Line	Type	A level	B level	C level	D level
Blue/Expo Lines	P865/P2020	5,000	15,000	30,000	60,000
Blue/Expo Lines	P2000	7,500	22,500	45,000	90,000
Red/Purple Lines	A650	7,500	22,500	45,000	90,000
Green Line	P2000	7,500	22,500	45,000	90,000
Gold Line	P2550	10,000	30,000	60,000	120,000
Gold/Expo Lines	P3010	10,000	30,000	60,000	120,000



RFS Leader Wrench Turning March 2018

RFS - Leader Wrench Turning March 2018



	Blue Line	Expo Line	Red Line	Green Line	Gold Line
Non-Wrench Turning	41.82%	40.27%	19.30%	31.00%	10.24%
Wrench Turning	58.18%	59.73%	80.70%	69.00%	89.76%
Goal	65%	65%	65%	65%	65%

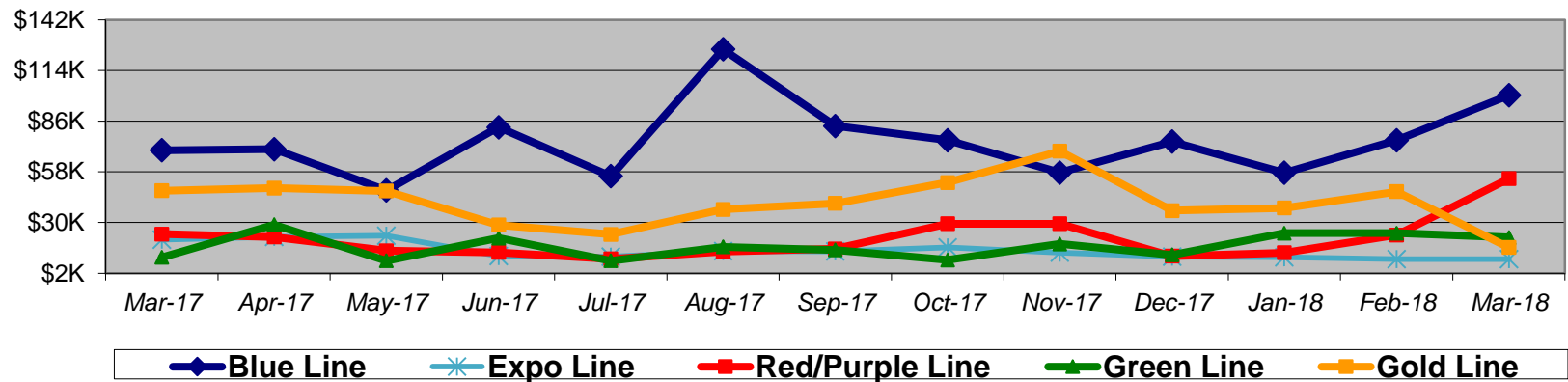
Notes: Labor hours contributed by Maint Specialist Leader, Rail Body/Paint Repair Leader, and Maint Specialist Temporary Leader

Vandalism & Graffiti Report

March 2017-2018

Graffiti Costs

	Mar-17	Apr-17	May-17	Jun-17	Jul-17	Aug-17	Sep-17	Oct-17	Nov-17	Dec-17	Jan-18	Feb-18	Mar-18	13-Month Period
Blue Line	\$70K	\$71K	\$48K	\$83K	\$56K	\$126K	\$83K	\$75K	\$58K	\$75K	\$57K	\$75K	\$100K	\$976K
Expo Line	\$21K	\$22K	\$23K	\$11K	\$11K	\$14K	\$14K	\$16K	\$13K	\$11K	\$11K	\$10K	\$10K	\$187K
Red/Purple Line	\$24K	\$22K	\$14K	\$13K	\$10K	\$14K	\$15K	\$29K	\$29K	\$11K	\$13K	\$23K	\$54K	\$273K
Green Line	\$11K	\$29K	\$9K	\$21K	\$9K	\$17K	\$15K	\$9K	\$18K	\$12K	\$24K	\$24K	\$22K	\$220K
Gold Line	\$48K	\$49K	\$47K	\$29K	\$23K	\$37K	\$41K	\$52K	\$69K	\$37K	\$38K	\$47K	\$16K	\$533K
Totals:	\$172K	\$193K	\$141K	\$158K	\$109K	\$208K	\$168K	\$182K	\$188K	\$146K	\$144K	\$180K	\$202K	\$2,190K



March 2018 Vandalism & Graffiti - All Rail				
	Qty	Labor	Materials	Totals
Windows Replaced	76	\$ 18,840	\$ 48,800	\$ 67,640
Vandal Shields Replaced	877	\$ 39,857	\$ 14,967	\$ 54,824
Seats Cleaned	171	\$ 1,334	\$ 787	\$ 2,121
Seats Inserts Replaced	799	\$ 37,748	\$ 27,530	\$ 65,278
Graffiti Removal - Other	1,158	\$ 8,317	\$ 1,146	\$ 9,463
Repainting Panels	94	\$ 2,961	\$ -	\$ 2,961
Totals	3,175	\$ 109,057	\$ 93,230	\$ 202,287

Vandalism & Graffiti Pictures

March 2018

Blue Line



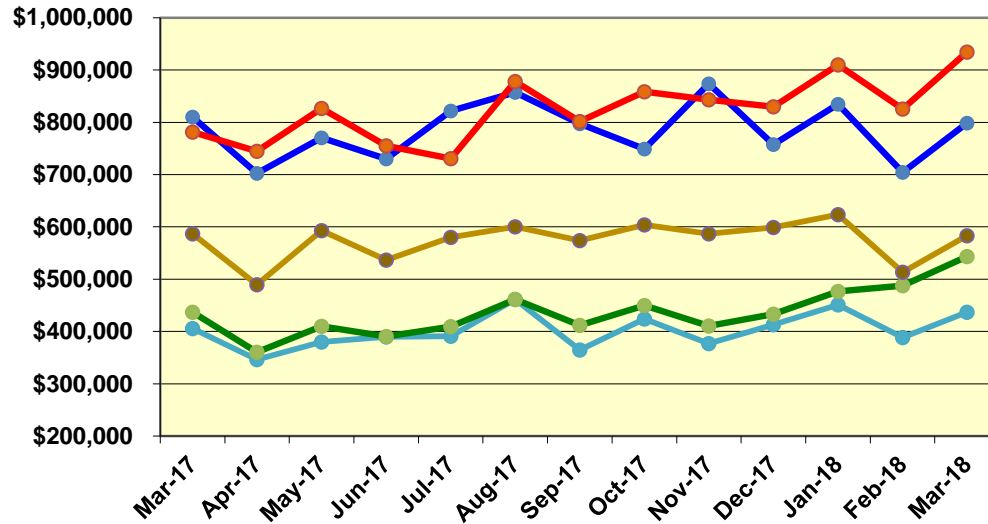
Green Line



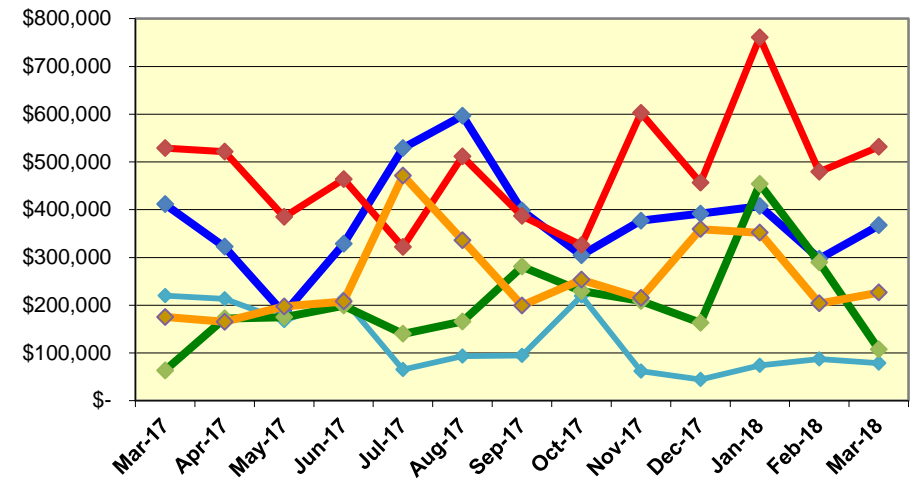
Labor and Material Costs

March 2017-2018

Labor Costs



Material Costs



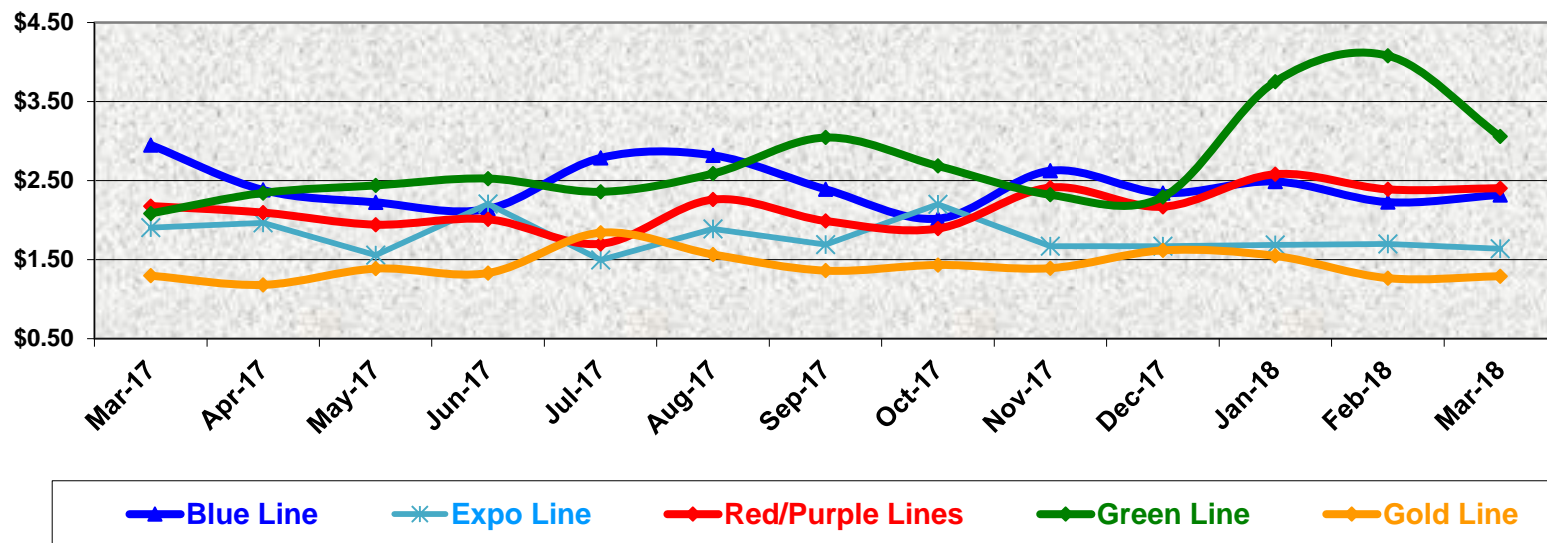
	Mar-17	Apr-17	May-17	Jun-17	Jul-17	Aug-17	Sep-17	Oct-17	Nov-17	Dec-17	Jan-18	Feb-18	Mar-18
Labor Costs													
Blue Line	\$ 810,012	\$ 702,374	\$ 770,245	\$ 730,183	\$ 822,077	\$ 857,616	\$ 797,683	\$ 749,009	\$ 874,166	\$ 757,379	\$ 834,543	\$ 704,295	\$ 798,589
Expo Line	\$ 405,656	\$ 346,398	\$ 379,871	\$ 389,878	\$ 391,095	\$ 461,075	\$ 364,430	\$ 423,859	\$ 377,003	\$ 413,302	\$ 451,261	\$ 388,329	\$ 436,850
Red/Purple Lines	\$ 781,595	\$ 744,460	\$ 826,461	\$ 754,862	\$ 730,783	\$ 878,453	\$ 801,722	\$ 858,679	\$ 843,202	\$ 829,663	\$ 909,988	\$ 825,697	\$ 934,421
Green Line	\$ 437,154	\$ 360,314	\$ 410,146	\$ 390,662	\$ 409,313	\$ 461,320	\$ 411,714	\$ 449,839	\$ 410,869	\$ 433,318	\$ 476,459	\$ 487,669	\$ 543,685
Gold Line	\$ 586,949	\$ 489,634	\$ 593,070	\$ 536,404	\$ 580,341	\$ 600,583	\$ 574,080	\$ 603,761	\$ 586,885	\$ 598,943	\$ 623,485	\$ 513,210	\$ 582,935
Totals	\$3,021,365	\$2,643,180	\$2,979,794	\$2,801,989	\$2,933,607	\$3,259,046	\$2,949,629	\$3,085,146	\$3,092,125	\$3,032,606	\$3,295,737	\$2,919,200	\$3,296,480

	Material Costs												
Blue Line	\$ 411,541	\$ 322,424	\$ 182,846	\$ 328,206	\$ 529,007	\$ 596,865	\$ 397,951	\$ 304,627	\$ 376,903	\$ 391,572	\$ 407,451	\$ 297,011	\$ 367,074
Expo Line	\$ 219,980	\$ 213,435	\$ 167,428	\$ 212,682	\$ 65,432	\$ 93,233	\$ 94,730	\$ 218,980	\$ 61,966	\$ 44,504	\$ 73,843	\$ 87,318	\$ 78,411
Red/Purple Lines	\$ 528,820	\$ 521,242	\$ 384,776	\$ 463,957	\$ 321,863	\$ 511,576	\$ 386,990	\$ 325,604	\$ 602,668	\$ 456,278	\$ 760,795	\$ 479,382	\$ 531,234
Green Line	\$ 63,371	\$ 172,269	\$ 174,969	\$ 199,040	\$ 140,168	\$ 165,820	\$ 280,752	\$ 229,311	\$ 208,844	\$ 163,235	\$ 453,737	\$ 289,320	\$ 107,325
Gold Line	\$ 175,047	\$ 165,012	\$ 197,220	\$ 207,555	\$ 471,378	\$ 336,025	\$ 199,318	\$ 253,138	\$ 215,172	\$ 359,058	\$ 351,690	\$ 203,571	\$ 226,568
Totals	\$1,398,760	\$1,394,383	\$1,107,239	\$1,411,440	\$1,527,848	\$1,703,519	\$1,359,742	\$1,331,660	\$1,465,553	\$1,414,648	\$2,047,515	\$1,356,602	\$1,310,612

Cost Per Mile March 2017-2018

Cost per mile:	Mar-17	Apr-17	May-17	Jun-17	Jul-17	Aug-17	Sep-17	Oct-17	Nov-17	Dec-17	Jan-18	Feb-18	Mar-18	Average
Blue Line	\$2.95	\$2.38	\$2.22	\$2.14	\$2.79	\$2.82	\$2.39	\$2.02	\$2.62	\$2.34	\$2.49	\$2.23	\$2.32	\$2.44
Expo Line	\$1.90	\$1.96	\$1.56	\$2.20	\$1.49	\$1.89	\$1.69	\$2.20	\$1.67	\$1.67	\$1.69	\$1.70	\$1.63	\$1.79
Red/Purple Lines	\$2.18	\$2.09	\$1.94	\$2.01	\$1.70	\$2.26	\$1.99	\$1.89	\$2.41	\$2.17	\$2.58	\$2.39	\$2.40	\$2.15
Green Line	\$2.08	\$2.34	\$2.44	\$2.52	\$2.36	\$2.59	\$3.04	\$2.68	\$2.32	\$2.29	\$3.75	\$4.08	\$3.06	\$2.74
Gold Line	\$1.29	\$1.18	\$1.38	\$1.33	\$1.84	\$1.56	\$1.36	\$1.43	\$1.39	\$1.62	\$1.55	\$1.26	\$1.29	\$1.42

Cost per Mile



ATU Absences vs. Overtime

March 2018

ABSENCE TYPE and HOURS	3941 Blue	3947 Expo	3942 Red	3943 Green	3944 Gold	3948 Monrovia	Total
AWP-ABSENT W/O PERMISSION	8	-	16	-	-	8	32
BER-BEREAVEMENT	24	-	24	-	-	24	72
CTO-COMPENSATORY TIME OFF	244	124	528	198	42	262	1,397
CUT-EMPLOYEE LEAVES EARLY	-	1	0	0	-	-	1
DSL-DISABILITY LEAVE/LONG	304	184	-	760	352	592	2,192
EFH-EMG. FLOAT HOL.	-	-	48	8	8	8	72
ETO-EXCUSED TIME OFF	56	78	56	90	1	25	305
FMI-FAM IND INJURY	-	-	-	184	-	-	184
FML-FAMILY CARE LEAVE	1,124	216	113	88	64	266	1,871
FMS-FAMILY LEAVE SICK	282	40	65	8	22	118	536
HLF-HOLIDAY FLOATING	256	80	112	96	-	154	698
JUR-JURY DUTY	-	-	32	-	-	16	48
LC1-LABOR CODE 233	296	132	355	72	32	214	1,101
LTI-OCCPIL/LONGTRM INJ LEAVE	392	184	352	176	-	-	1,104
MLN-MILITARY ABSENCE-UNPAID	-	-	16	-	-	-	16
OWP-OFF WITH PERMISSION	-	-	20	-	-	-	20
RTO-REQUESTED TIME OFF-NO PAY	18	-	9	-	-	-	27
SCK-SICK PAY	386	16	257	81	40	200	979
SCW-SICK WITHOUT PAY	239	24	8	152	-	80	503
SPN-SCHOOL PARTNER NOT PAID	-	-	8	-	-	8	16
TAR-TARDY	1	1	2	2	0	2	7
UB-UNION BUSINESS	-	-	-	-	-	-	-
UNP-UNION BUS PAID	-	12	-	-	-	-	12
VAC-VACATION	778	240	1,140	276	148	294	2,876
*TRAINING	493	28	-	19	26	88	654
Total Absence Hours	4,899	1,360	3,161	2,209	735	2,359	14,723
**ATU Number of Work Force (active)	102	40	104	46	16	57	365
Full Work Force hours/month	17,677	6,932	18,023	7,972	2,773	9,880	63,255
Absence as a % of Work Force	28%	20%	18%	28%	27%	24%	23%

OVERTIME TYPE and HOURS	3941 Blue	3947 Expo	3942 Red	3943 Green	3944 Gold	3948 Monrovia	Total
CTB-COMPENSATORY TIME TO BANK	169	21	168	196	28	44	626
OTP-PREM OVERTIME	3,946	2,179	4,689	3,499	81	1,064	15,459
WLO-Worked Lunch Overtime	139	145	282	360	24	103	1,053
Total Overtime Hours	4,254	2,346	5,139	4,056	133	1,211	17,138
Overtime as a % of Work Force	24%	34%	29%	51%	5%	12%	27%

*Training hours captured by Instruction Department are added to Absences Report.

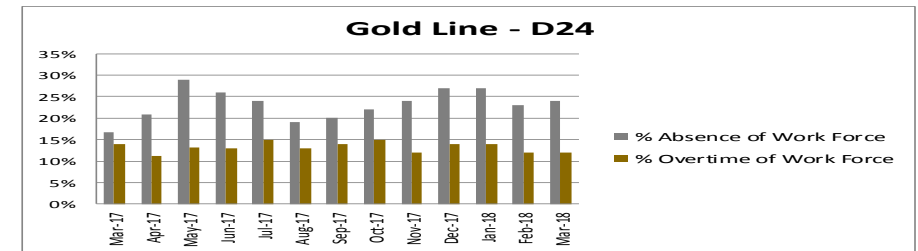
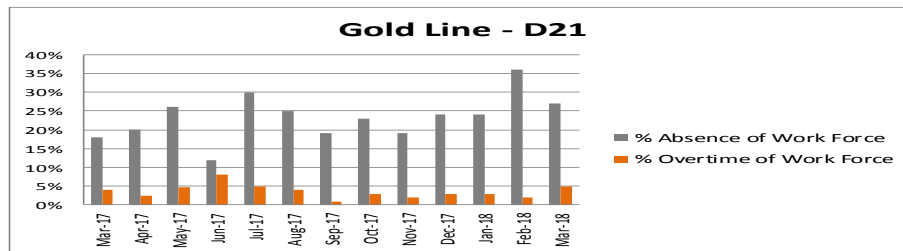
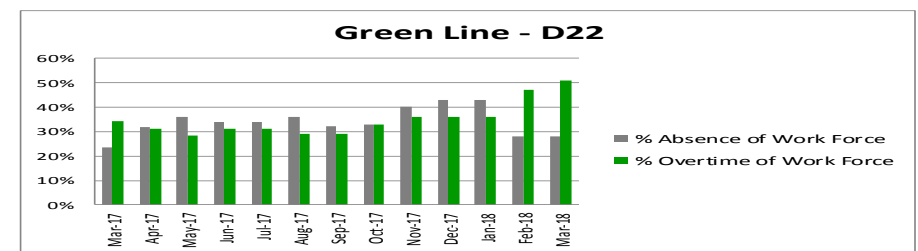
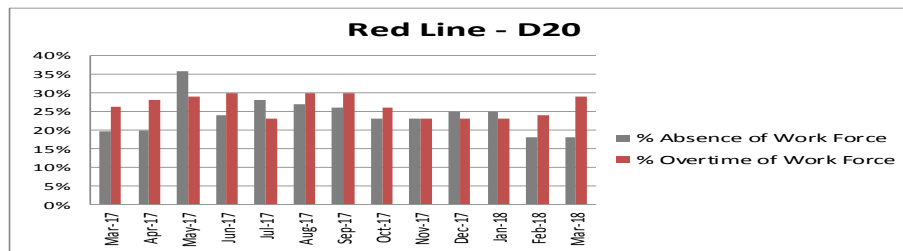
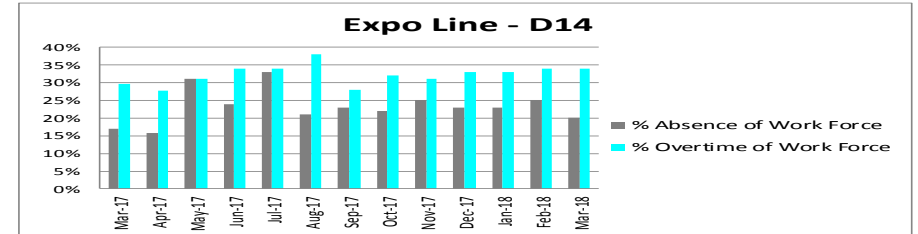
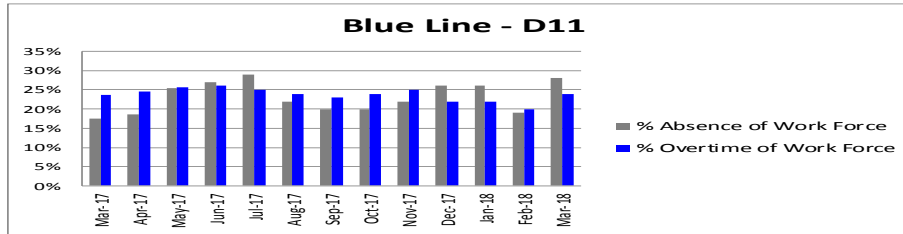
**ATU Employee Numbers from ATU Manpower Status Report (last week of the month)



Note: Overtime also covers other required activities, including Training, Component Overhaul, and Special Events.

ATU - %Absence & %Overtime of Work Force

March 2017-2018



% Absence of Work Force	Mar-17	Apr-17	May-17	Jun-17	Jul-17	Aug-17	Sep-17	Oct-17	Nov-17	Dec-17	Jan-18	Feb-18	Mar-18	13-Month Average
Blue Line D11	17%	19%	25%	27%	29%	22%	20%	20%	22%	26%	26%	19%	28%	23%
Expo Line D14	17%	16%	31%	24%	33%	21%	23%	22%	25%	23%	23%	25%	20%	23%
Red Line D20	20%	20%	36%	24%	28%	27%	26%	23%	23%	25%	25%	18%	18%	24%
Green Line D22	24%	32%	36%	34%	34%	36%	32%	33%	40%	43%	43%	28%	28%	34%
Gold Line D21	18%	20%	26%	12%	30%	25%	19%	23%	19%	24%	24%	36%	27%	23%
Gold Line D24	17%	21%	29%	26%	24%	19%	20%	22%	24%	27%	27%	23%	24%	23%

% Overtime of Work Force	Mar-17	Apr-17	May-17	Jun-17	Jul-17	Aug-17	Sep-17	Oct-17	Nov-17	Dec-17	Jan-18	Feb-18	Mar-18	13-Month Average
Blue Line D11	24%	24%	26%	26%	25%	24%	23%	24%	25%	22%	22%	20%	24%	24%
Expo Line D14	30%	28%	31%	34%	34%	38%	28%	32%	31%	33%	33%	34%	34%	32%
Red Line D20	26%	28%	29%	30%	23%	30%	30%	26%	23%	23%	23%	24%	29%	27%
Green Line D22	34%	31%	28%	31%	31%	29%	29%	33%	36%	36%	36%	47%	51%	35%
Gold Line D21	4%	2%	5%	2%	5%	4%	1%	3%	2%	3%	3%	2%	5%	3%
Gold Line D24	14%	11%	13%	13%	15%	13%	14%	15%	12%	14%	14%	12%	12%	13%

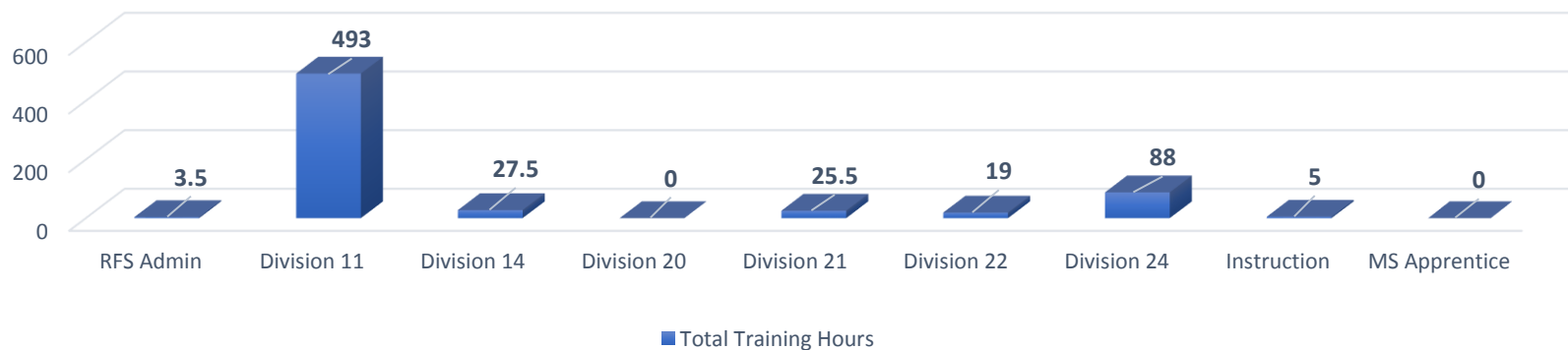
Training - RFS Instruction Department

March 2018

RFS Training Hours

Team	No. Employees	Vehicle Training	RFS Other	Metro Provided	Total Training Hours
RFS Admin	2	-	-	4	4
Division 11	16	480	-	13	493
Division 14	4	-	-	28	28
Division 20	-	-	-	-	-
Division 21	2	24	-	2	26
Division 22	5	16	-	3	19
Division 24	6	64	-	24	88
Instruction	1	-	-	5	5
MS Apprentice	-	-	-	-	-
Grand Total	36	584	-	78	662

RFS Instruction Time



Description

Vehicle Training = Training related to Fleet Maintenance

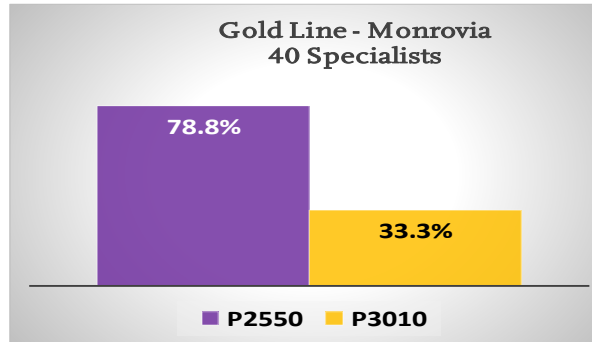
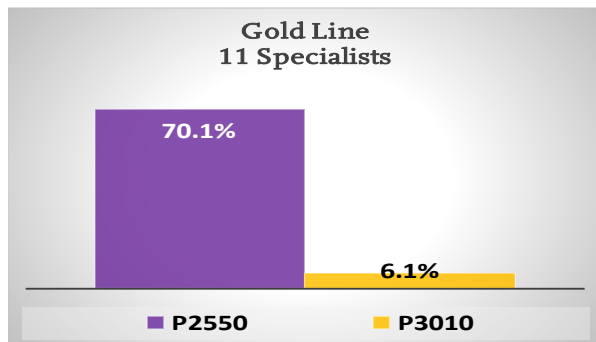
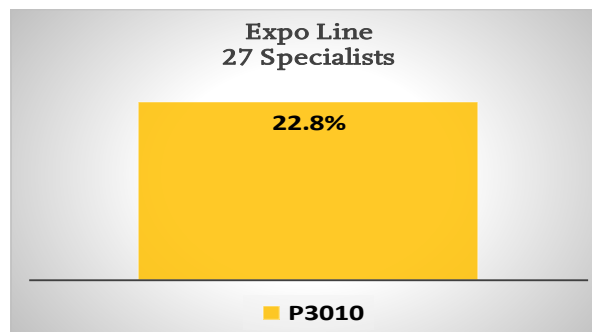
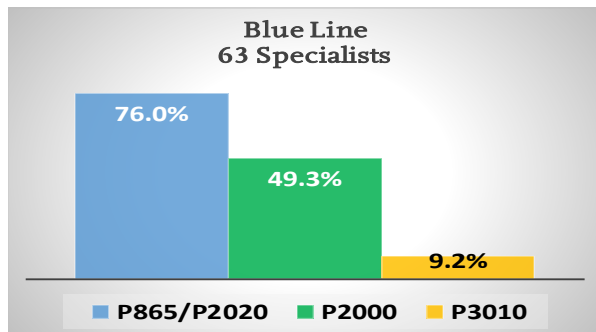
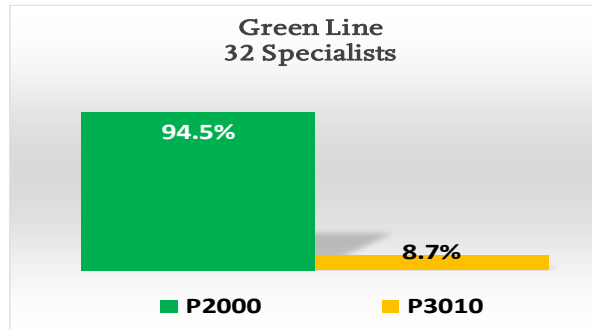
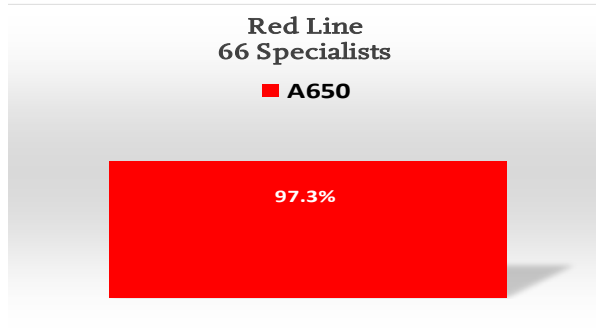
RFS Other = Training Created by RFS Instruction but not related to Vehicle Training

Metro Provided = Training provided outside RFS Training (OD&T, Transportation)

Total Training Hours = Total amount of man-hours spent by RFS in any kind of training

Maintenance Specialists Vehicle Training Levels

March 2018



Red Line	66	Specialists
Average Experience	13.3	Years
A650	97.3%	Training Complete

Green Line	32	Specialists
Average Experience	11	Years
P2000	94.5%	Training Complete
P3010	8.7%	Training Complete

Blue Line	63	Specialists
Average Experience	14.8	Years
P865/P2020	76.0%	Training Complete
P2000	49.3%	Training Complete
P3010	9.2%	Training Complete

Expo Line	27	Specialists
Average Experience	4.2	Years
P3010	22.8%	Training Complete

Gold Line	11	Specialists
Average Experience	6.6	Years
P2550	70.1%	Training Complete
P3010	6.1%	Training Complete

Gold Line - Monrovia	40	Specialists
Average Experience	8.5	Years
P2550	78.8%	Training Complete
P3010	33.3%	Training Complete