



# Rail Fleet Services Monthly Report May 2018



**Metro**

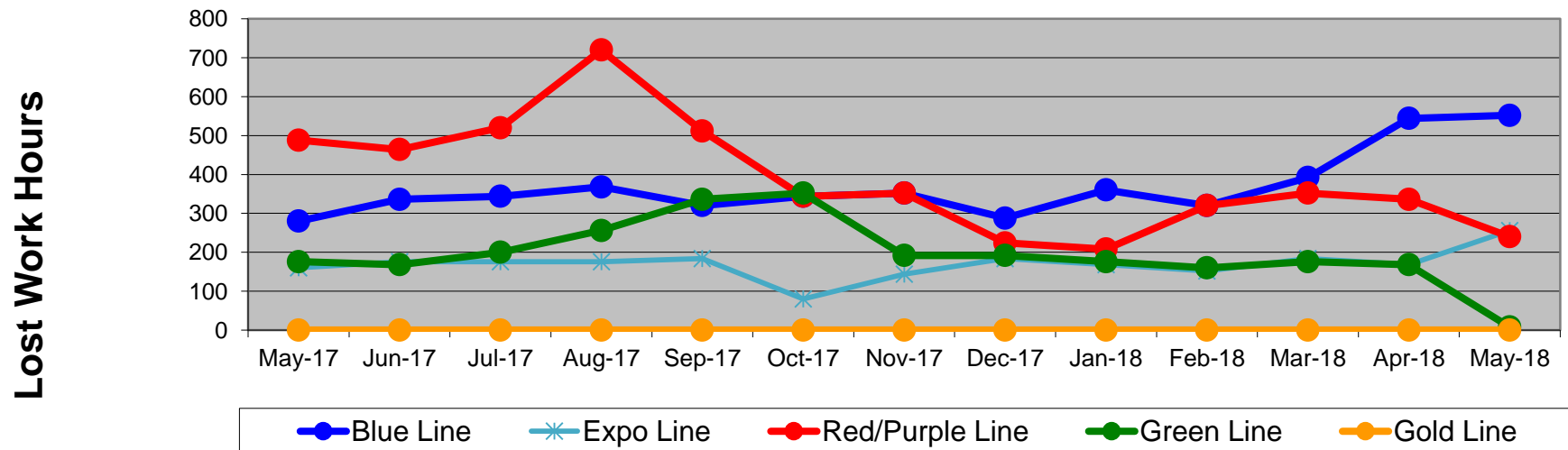
# Table of Contents

•	Safety & Cleanliness		
	- Industrial Injuries	Page	3
	- Rail Vehicle Accidents & Major Incidents	Page	4
	- Car Cleanliness	Page	5
•	Customer Service		
	- Service Delivery – AM/PM Pull-Outs	Page	6
	- Vehicle Utilization – Red Line	Page	7
	- Vehicle Utilization – Blue Line & Expo Line	Page	8
	- Vehicle Utilization – Green Line & Gold Line	Page	9
	- All Train Delay Incidents	Page	10
	- Mean Miles Between Failures (Major) & MMBF by Division	Page	11-12
	- Mileage Between Data Range (by month)	Page	13
•	Business Processes		
	- Top Incident Categories	Page	14
	- Major Incidents	Page	15
	- Preventive Maintenance Compliance	Page	16
	- RFS Leader Wrench Turning	Page	17
•	Finance		
	- Vandalism & Graffiti Costs	Page	18
	- Vandalism & Graffiti Pictures	Page	19
	- Labor & Material Costs	Page	20
	- Cost per mile	Page	21
	- Absence vs. Overtime/ %Absence and %Overtime of ATU	Page	22-23
•	Growth		
	- RFS Instruction Department Activities	Page	24-26

# Industrial Injuries – Lost Work Hours May 2017-2018

	May-17	Jun-17	Jul-17	Aug-17	Sep-17	Oct-17	Nov-17	Dec-17	Jan-18	Feb-18	Mar-18	Apr-18	May-18	13-Month Period
Blue Line	280	336	344	368	320	344	352	288	360	320	392	544	552	4,800
Expo Line	160	176	176	176	184	80	144	184	168	152	184	168	256	2,208
Red/Purple Line	488	464	520	720	512	344	352	224	208	320	352	336	240	5,080
Green Line	176	168	200	256	336	352	192	192	176	160	176	168	8	2,560
Gold Line	0	0	0	0	0	0	0	0	0	0	0	0	0	0
Totals	1,104	1,144	1,240	1,520	1,352	1,120	1,040	888	912	952	1,104	1,216	1,056	14,648

## Industrial Injuries (lost work hours)



# Rail Vehicle Accidents & Major Incidents

## May 2017-2018

Repair Costs	May-17	Jun-17	Jul-17	Aug-17	Sep-17	Oct-17	Nov-17	Dec-17	Jan-18	Feb-18	Mar-18	Apr-18	May-18	13-Month Period
Blue Line	\$0	\$15,084	\$632	\$268	\$3,683	\$31,202	\$1,016	\$344	\$0	\$120	\$561	\$0	\$24,498	\$77,408
Expo Line	\$0	\$0	\$0	\$191	\$0	\$25,571	\$597	\$321	\$0	\$563	\$8,890	\$9,249	\$1,811	\$47,193
Red/Purple Line	\$0	\$0	\$0	\$0	\$0	\$0	\$0	\$0	\$0	\$741	\$0	\$0	\$0	\$741
Green Line	\$0	\$0	\$0	\$0	\$0	\$0	\$0	\$0	\$0	\$0	\$11,777	\$0	\$0	\$11,777
Gold Line	\$2,692	\$0	\$0	\$0	\$1,343	\$5,751	\$0	\$680	\$0	\$0	\$0	\$0	\$0	\$10,466
<b>Totals</b>	<b>\$2,692</b>	<b>\$15,084</b>	<b>\$632</b>	<b>\$459</b>	<b>\$5,026</b>	<b>\$62,524</b>	<b>\$1,613</b>	<b>\$1,345</b>	<b>\$0</b>	<b>\$1,424</b>	<b>\$21,228</b>	<b>\$9,249</b>	<b>\$26,309</b>	<b>\$147,585</b>

### Rail Vehicle Accident Costs - May 2018

Date	Incident #	Problem Code	Incident Description	Repair Cost
<b>Metro Blue Line</b>				
5/4/18	3001815	Train vs. Vehicle	A 10-73 was reported at 18th and Flower St. Track 2 SB.	\$ 23,259
5/4/18	3002023	Train vs. Pedestrian	A 10-72 was reported at Florence Grade Crossing.	\$ 80
5/9/18	3003552	Train vs. Vehicle	A 10-73 was reported at Washington and Central. Track 1.	\$ 1,159
5/11/18	3004704	Train vs. Object	A 10-71 was reported in the yard, trains vs portable stairs.	\$ -
<b>Metro Blue Line Total</b>				<b>\$ 24,498</b>
<b>Metro Expo Line</b>				
5/25/18	3009984	Train vs. Vehicle	A 10-73 was reported at Raymond and Exposition.	\$ 1,811
<b>Metro Expo Line Total</b>				<b>\$ 1,811</b>
<b>Metro Green Line</b>				
5/14/18	3005679	Train vs. Object	Car 1001 made contact with hydraulic pump in the shop.	\$ -
<b>Metro Green Line Total</b>				<b>\$ -</b>
<b>Grand Total</b>				<b>\$ 26,309</b>
<b>10-71 = Train vs. Object/ 10-72 = Train vs. Pedestrian/ 10-73 = Train vs. Vehicle/ 10-74 = Train vs. MTA Vehicle/ 10-75 = Derailment</b>				

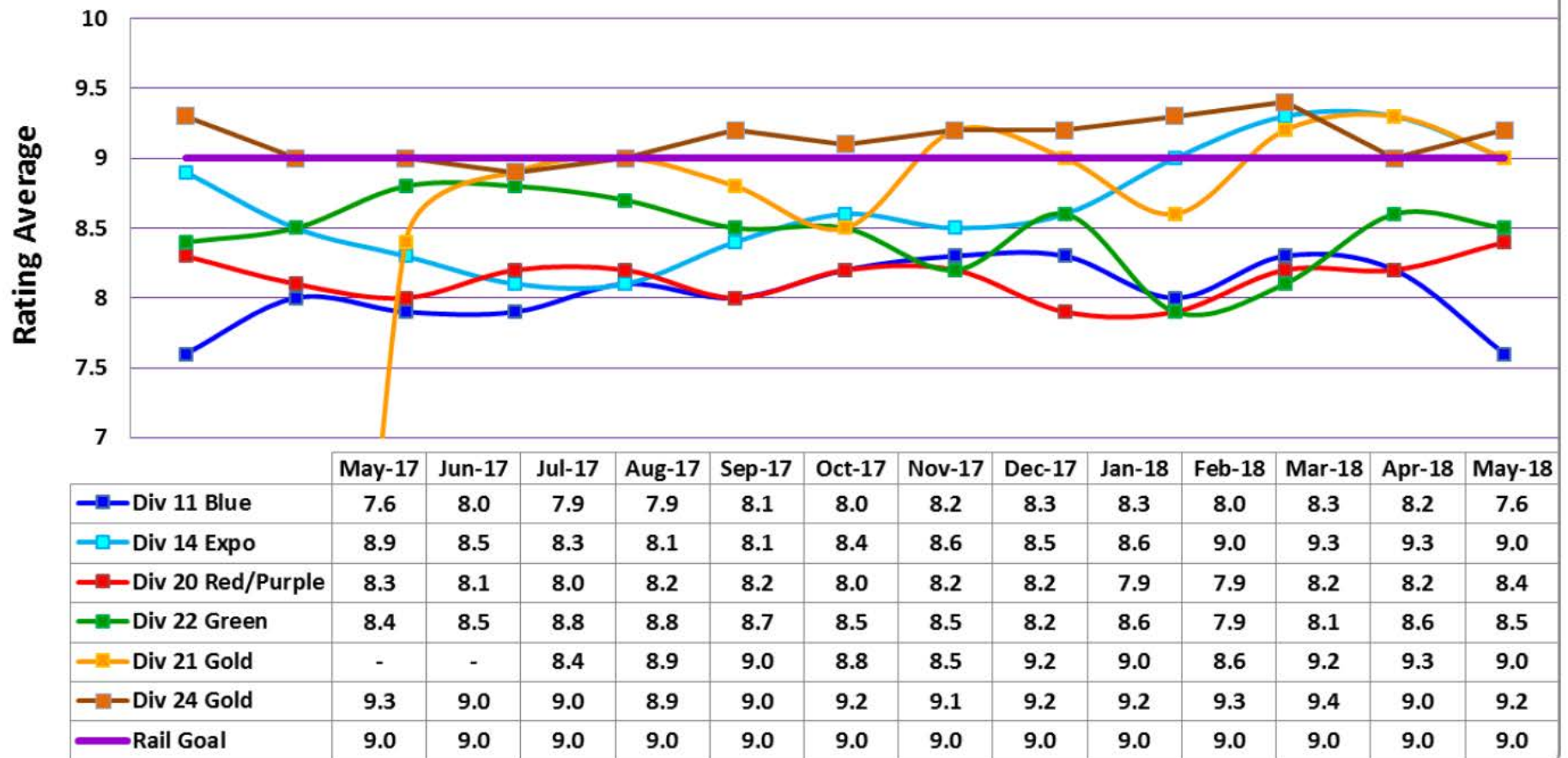


**Note:** Repair costs are only the expenses captured during the time period of the report. Actual costs may be significantly higher, if repairs are spread out over several months.

**Metro**

# Rail Vehicle – Car Cleanliness May 2017-2018

## Car Cleanliness Report



# Service Delivery May 2018

## Blue Line Fleet Size: 94

Pull Out	Vehicles Required	Average Available	% Up (Down)
Weekday:	66	65	98%
Weekend:	26	47	181%

**Monthly Mileage: 527,001**

## Expo Line Fleet Size: 55

Pull Out	Vehicles Required	Average Available	% Up (Down)
Weekday:	42	41	98%
Weekend:	30	35	117%

**Monthly Mileage: 316,652**

## Red/Purple Line Fleet Size: 98

Pull Out	Vehicles Required	Average Available	% Up (Down)
Weekday:	64	70	109%
Weekend:	40	58	145%

**Monthly Mileage: 589,046**

## Green Line Fleet Size: 35

Pull Out	Vehicles Required	Average Available	% Up (Down)
Weekday:	26	27	104%
Weekend:	14	18	129%

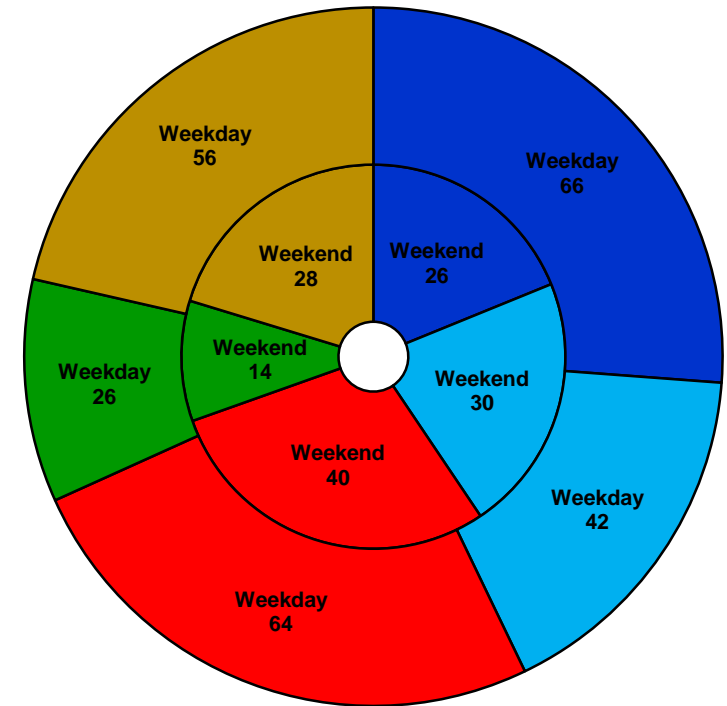
**Monthly Mileage: 256,484**

## Gold Line Fleet Size: 72

Pull Out	Vehicles Required	Average Available	% Up (Down)
Weekday (Div 21):	14	14	100%
Weekday (Div 24):	42	45	107%
Weekend (Div 24):	28	44	157%

**\*Monthly Mileage: 614,170**

\* Gold Line monthly mileage includes Division 21 and 24.

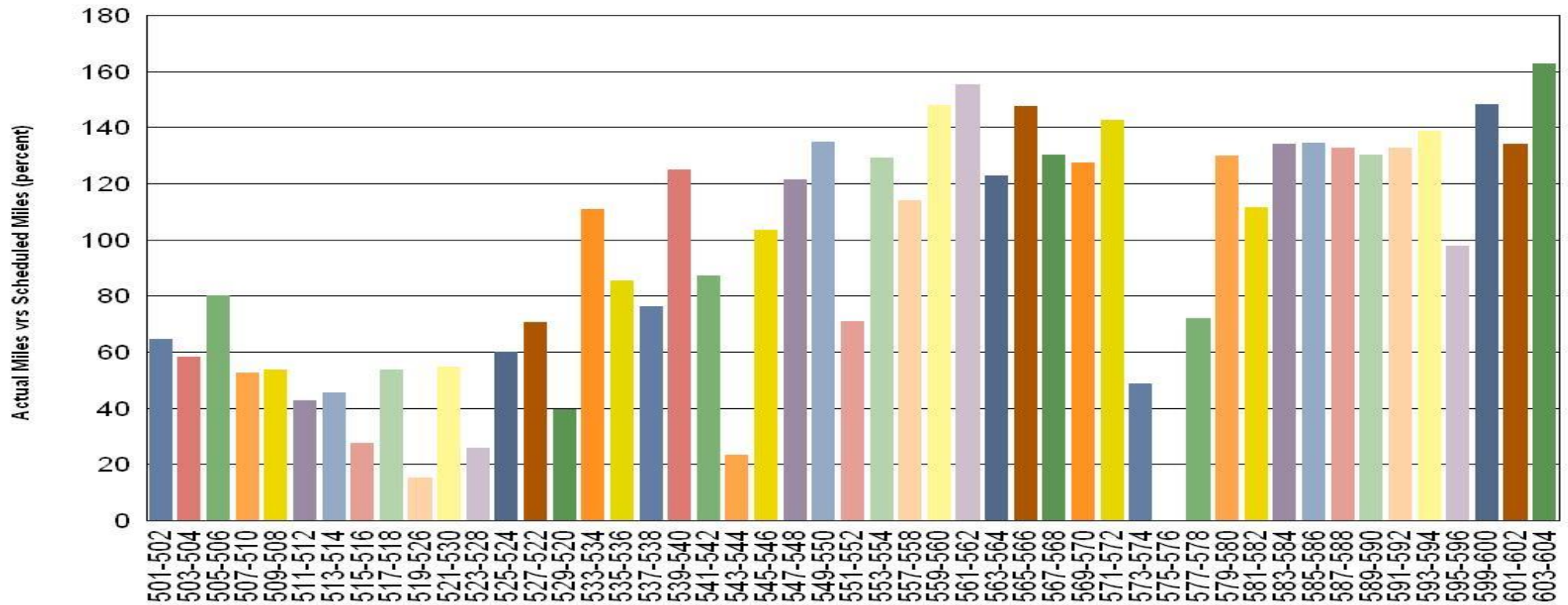


■ Blue Line ■ Expo Line ■ Red/Purple Line ■ Green Line ■ Gold Line

NOTES: Standby trains not included in vehicle requirements

# Vehicle Utilization May 2018

## Metro Red/Purple Line (98 Cars)



### Red/Purple Line:

The following cars were in service below 40% due to:

**Car # 515-516** – CB1 Tripped. / No Propulsion. / Doors Problem

**Car # 519-526** – Recurring Propulsion Faults / Doors Problem

**Car # 523-528** – 90K Inspection. / Friction Brake Overhaul

**Car # 529-520** – Door Problem / Friction Brake Self Apply / 7.5K Inspection

**Car # 543-544** – Emergency Brake Application / Propulsion Failures

**Car # 575-576** – Interior Renovation Campaign

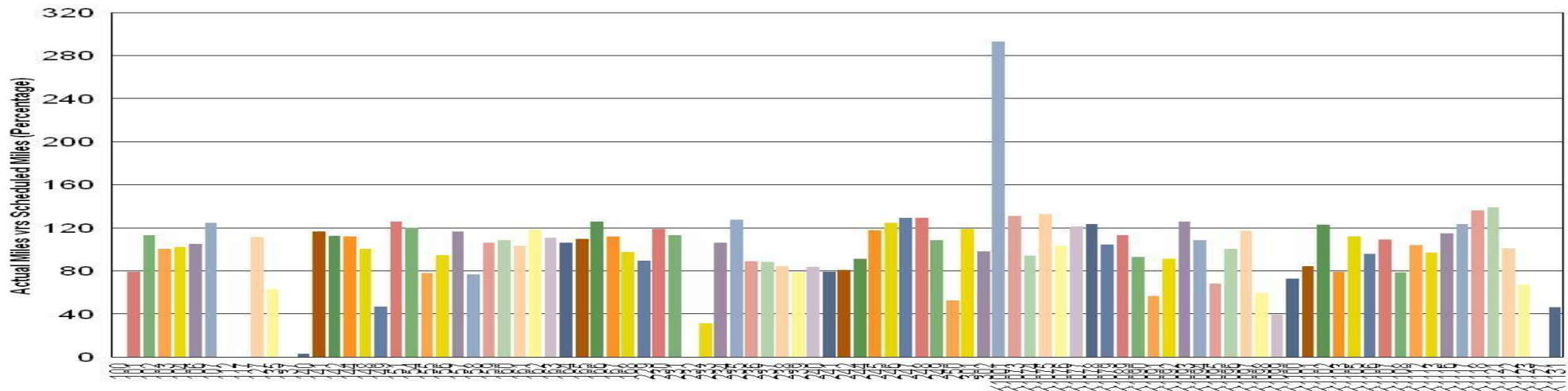


•Percentage includes an average 4% mileage deduction for yard mileage and vehicle testing.



# Vehicle Utilization May 2018

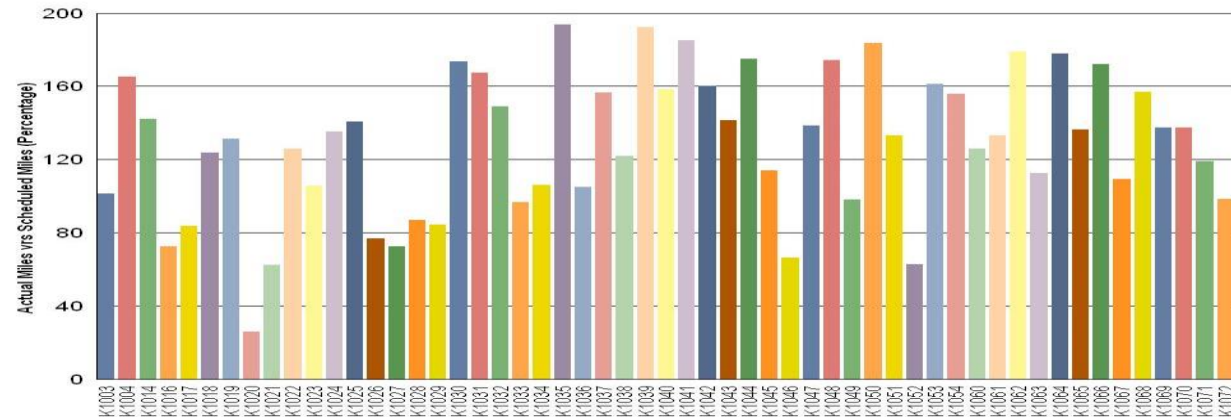
## Metro Blue Line (94 Cars)



**Blue Line:** The following cars were in service below 40% due to:

- Car # 100** – Decommissioned/ Restoration Project for City of Long Beach
- Car # 112** – Decommissioned and Sold at Auction
- Car # 117** – Decommissioned and Sold at Auction
- Car # 137** – Decommissioned and Sold at Auction
- Car # 140** – Decommissioned and Sold at Auction
- Car # 232** – Off the Property for Midlife Overhaul
- Car # 233** – Door Overhaul
- Car # K1099** – Wheel Truing for Flats/ A-end Horn Gong Issue
- Car # K1127** – Delivered to Div.11 on 5-22-2018/ QA Inspection/ Warranty Work

## Metro Expo Line (55 Cars)



**Expo Line:** The following car was in service below 40% due to:

- Car # K1020** – 120k Inspection and Related Work Orders



*Note: Percentage includes an average 4% mileage deduction for yard mileage and vehicle testing.*



# Vehicle Utilization

## May 2018

### Metro Green Line (35 Cars)

#### Green Line:

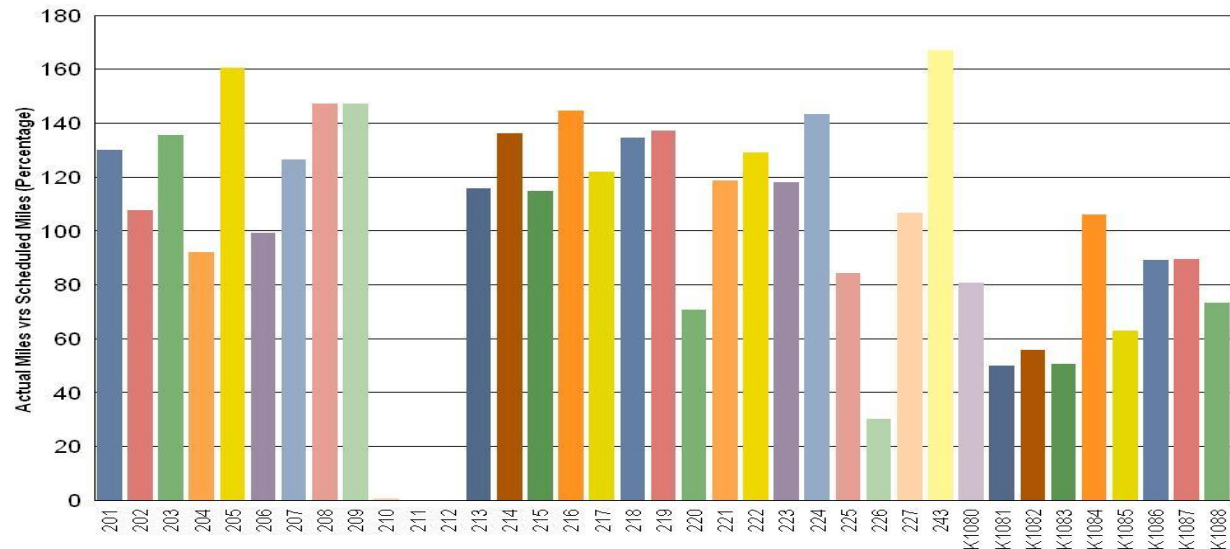
The following cars were in service below 40% due to:

**Car # 210** – Off the Property for Midlife Overhaul

**Car # 211** – Off the Property for Midlife Overhaul

**Car # 212** – Off the Property for Midlife Overhaul

**Car # 226** – Propulsion Fault



### Metro Gold Line (72 Cars)

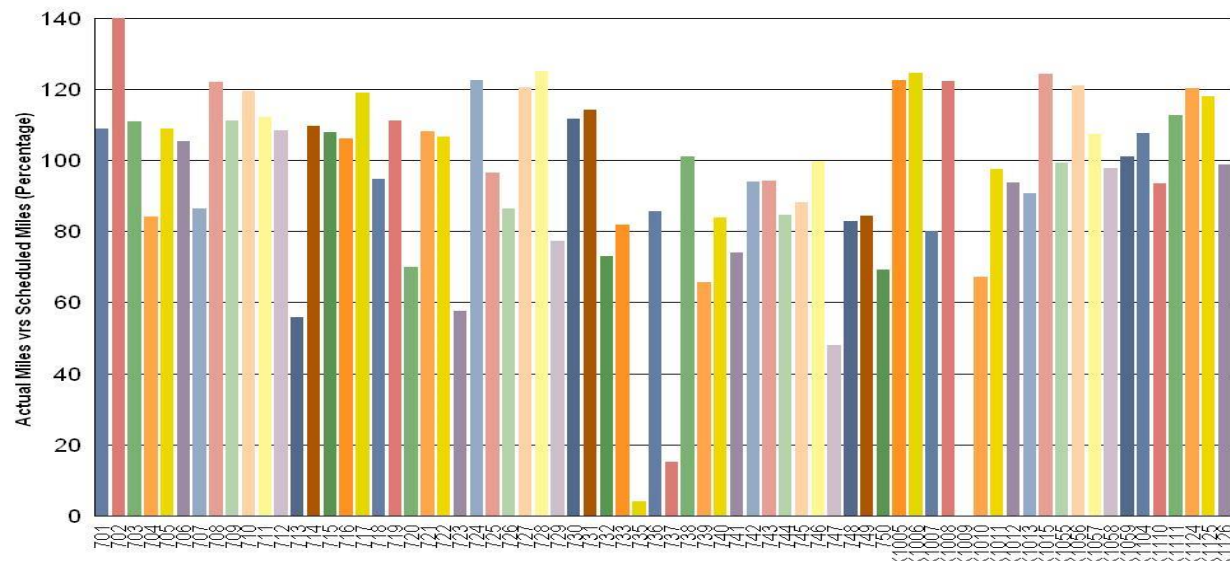
#### Gold Line:

The following cars were in service below 40% due to:

**Car # 735** – Journal Bearing Replacement

**Car # 737** – Journal Bearing Replacement

**Car # K1009** – Warranty Testing of Air Compressor Oil

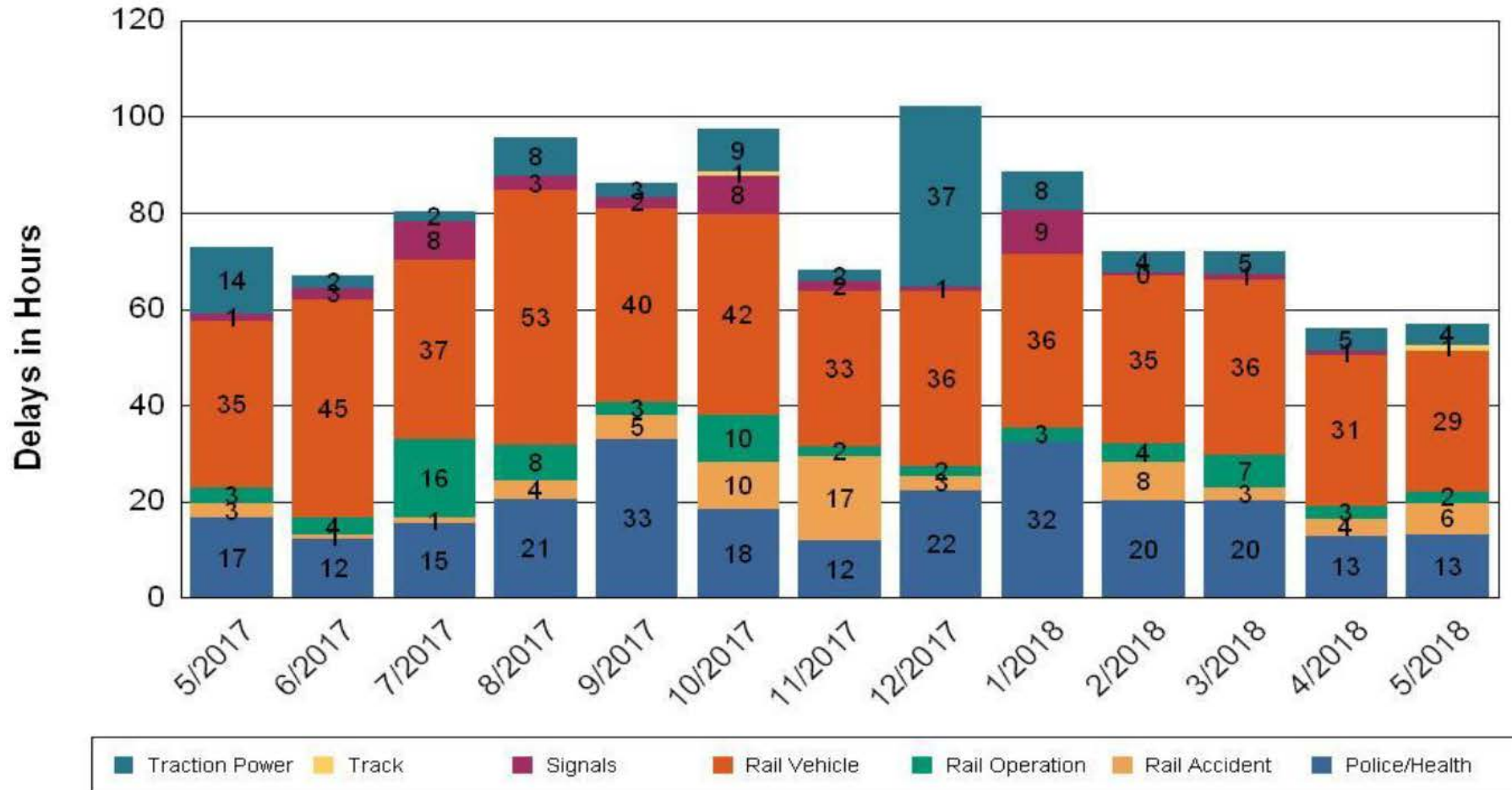


•Percentage includes an average 4% mileage deduction for yard mileage and vehicle testing.

# All Train Delays (Hours) May 2017-2018

## All Train Delays

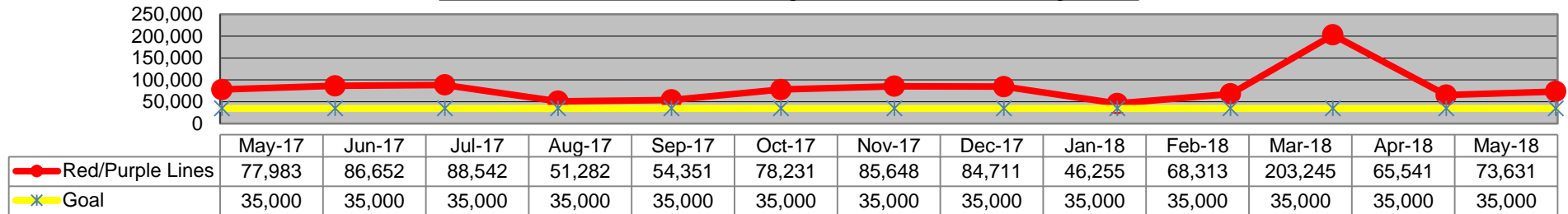
Totals Include the delay to all trains involved (not just the primary incident)



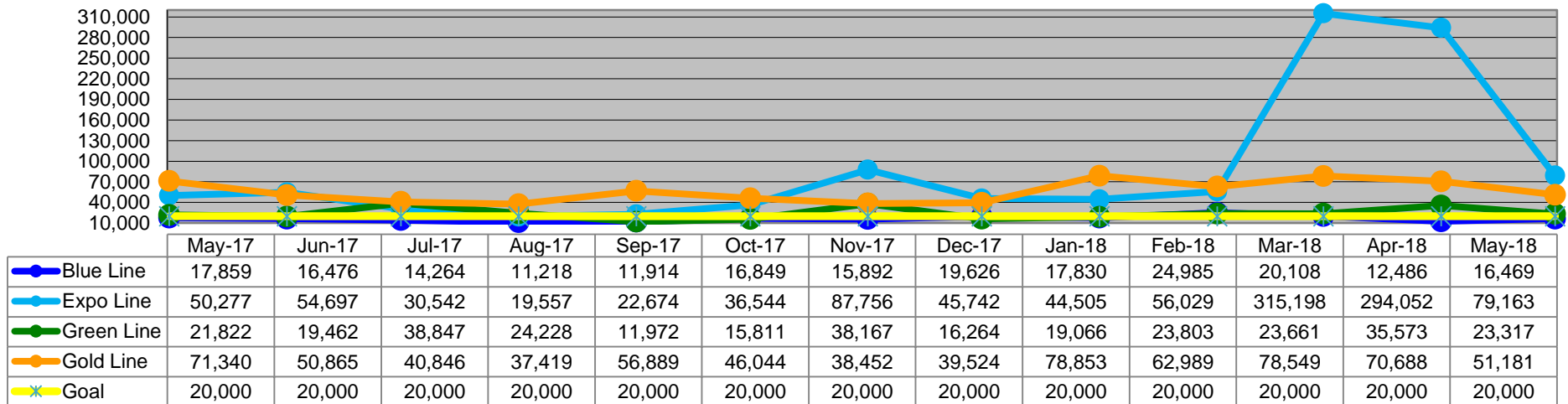
# Mean Miles Between Major Failures (MMBF)

## May 2017-2018

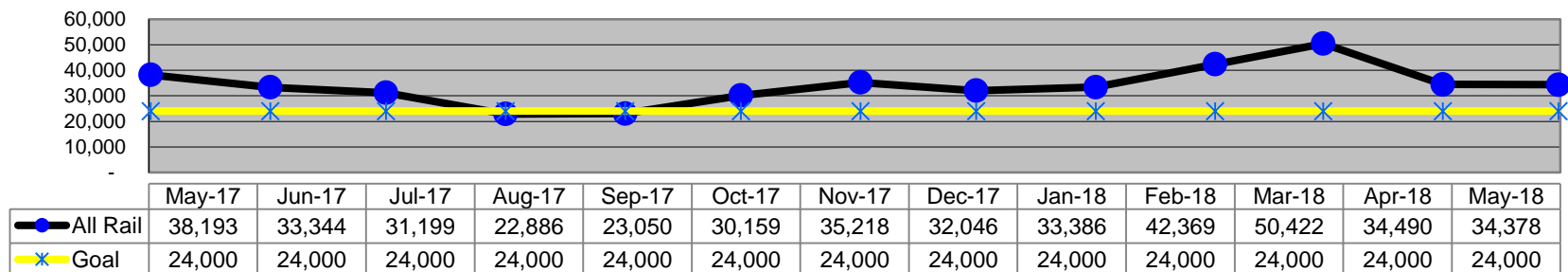
### Mean Miles Between Major Failures - Heavy Rail



### Mean Miles Between Major Failures - Light Rail



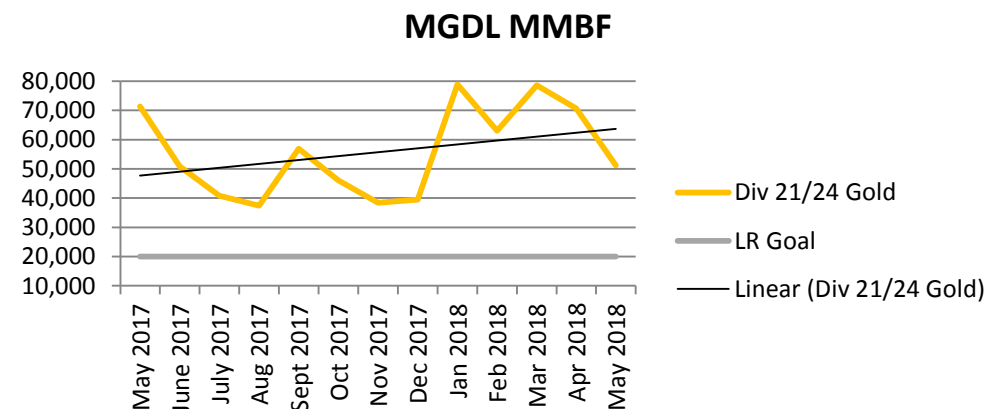
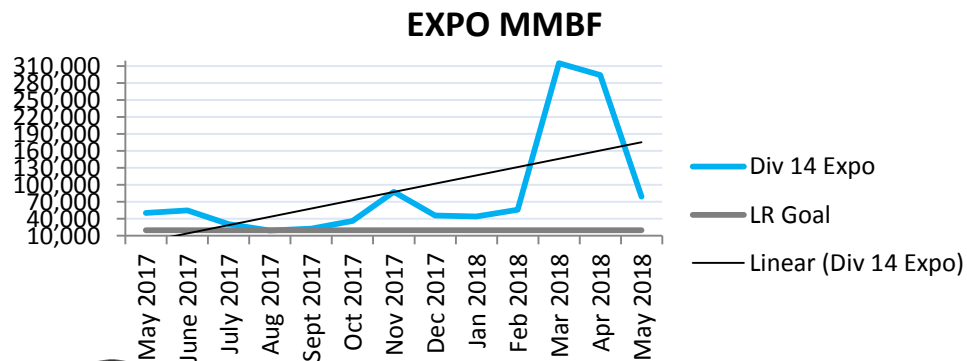
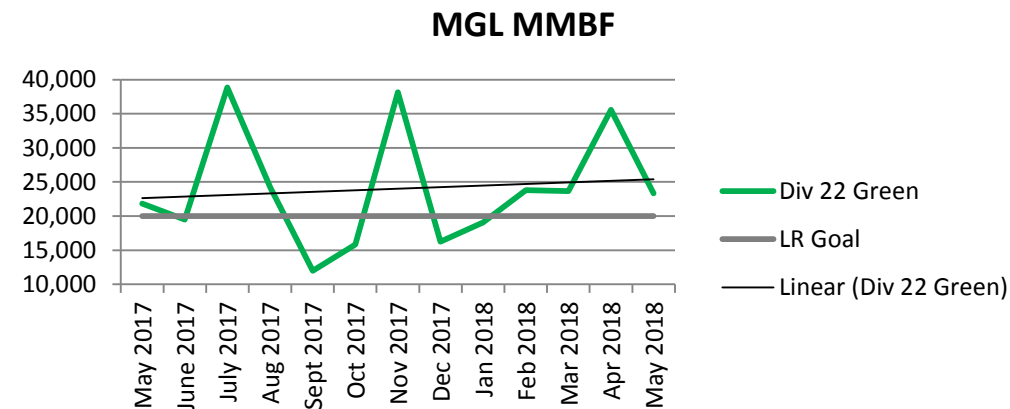
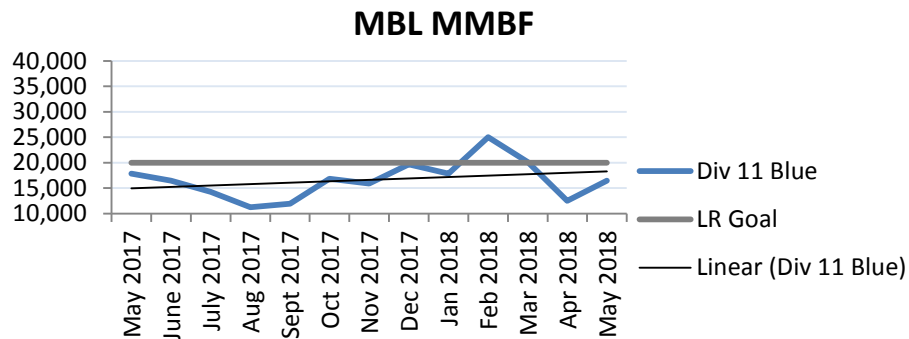
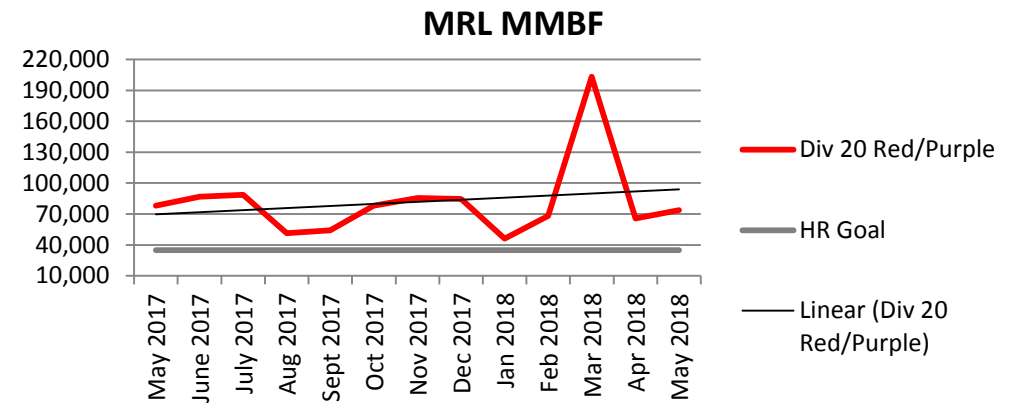
### Mean Miles Between Major Failures (all)



# MMBF by Division

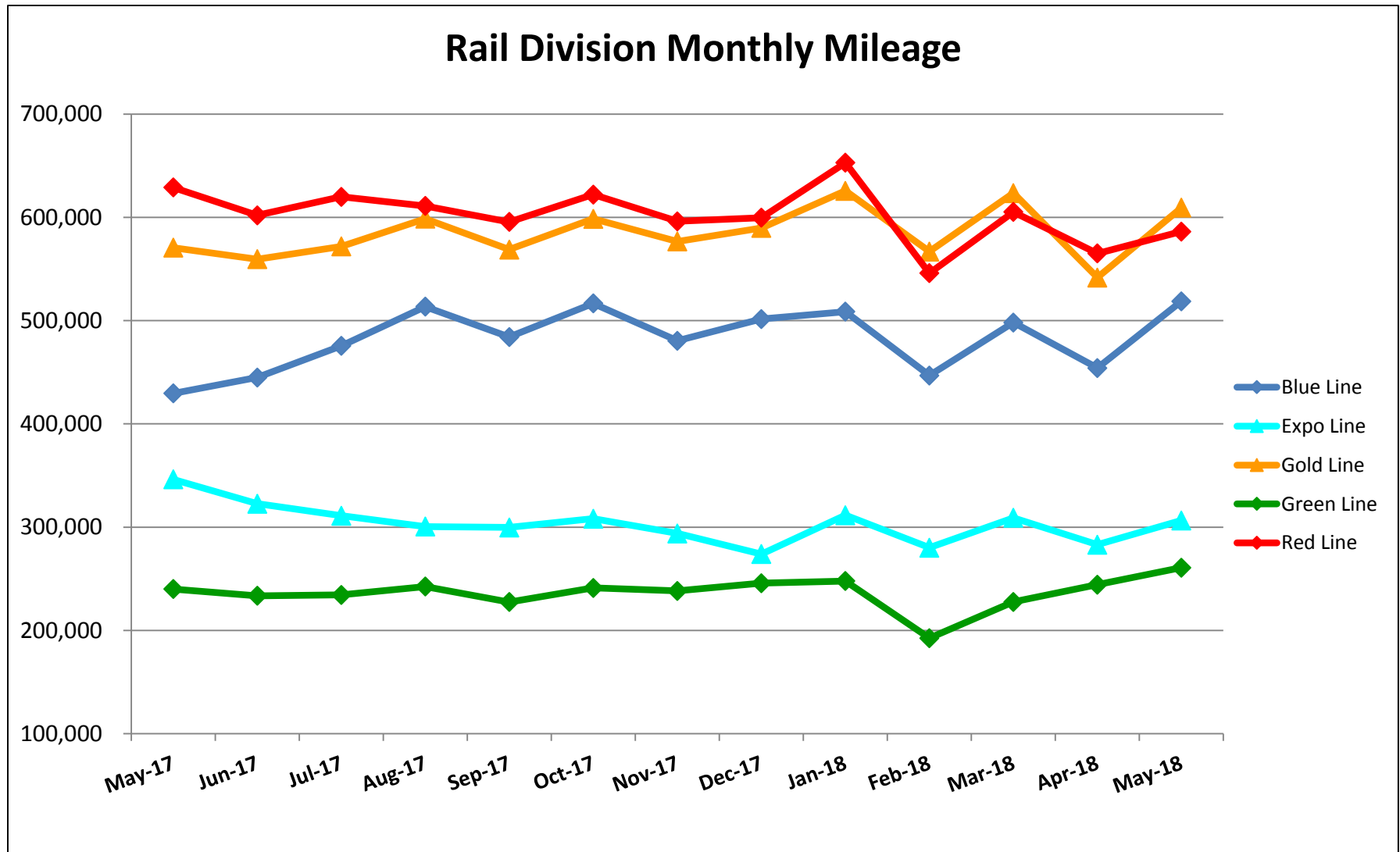
## May 2017-2018

Month	Div 11 Blue	Div 14 Expo	Div 20 Red/Purple	Div 22 Green	Div 21/24 Gold	LR Goal	HR Goal
May 2017	17,859	50,277	77,983	21,822	71,340	20,000	35,000
June 2017	16,476	54,697	86,652	19,462	50,865	20,000	35,000
July 2017	14,264	30,542	88,542	38,847	40,846	20,000	35,000
Aug 2017	11,218	19,557	51,282	24,228	37,419	20,000	35,000
Sept 2017	11,914	22,674	54,351	11,972	56,889	20,000	35,000
Oct 2017	16,849	36,544	78,231	15,811	46,044	20,000	35,000
Nov 2017	15,892	87,756	85,648	38,167	38,452	20,000	35,000
Dec 2017	19,626	45,742	84,711	16,264	39,524	20,000	35,000
Jan 2018	17,830	44,505	46,255	19,066	78,853	20,000	35,000
Feb 2018	24,985	56,029	68,313	23,803	62,989	20,000	35,000
Mar 2018	20,108	315,198	203,245	23,661	78,549	20,000	35,000
Apr 2018	12,486	294,052	65,541	35,573	70,688	20,000	35,000
May 2018	16,469	79,163	73,613	23,317	51,181	20,000	35,000



# Mileage Between Data Range (by month)

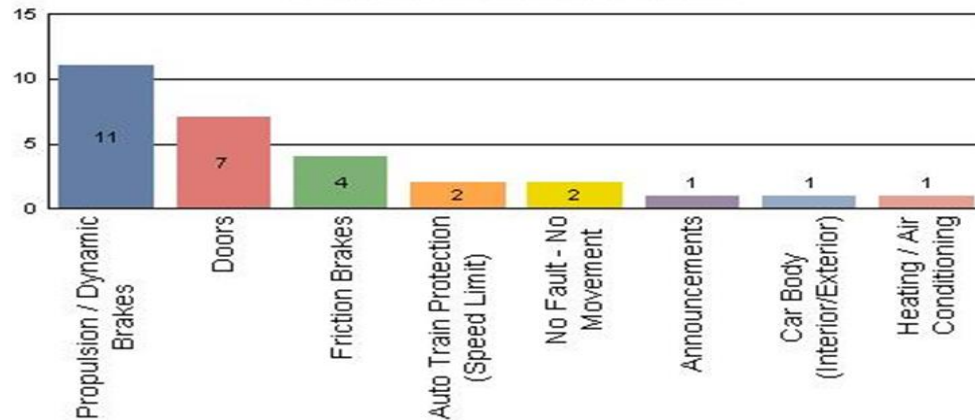
## May 2017-2018



# Top Incident Categories May 2018

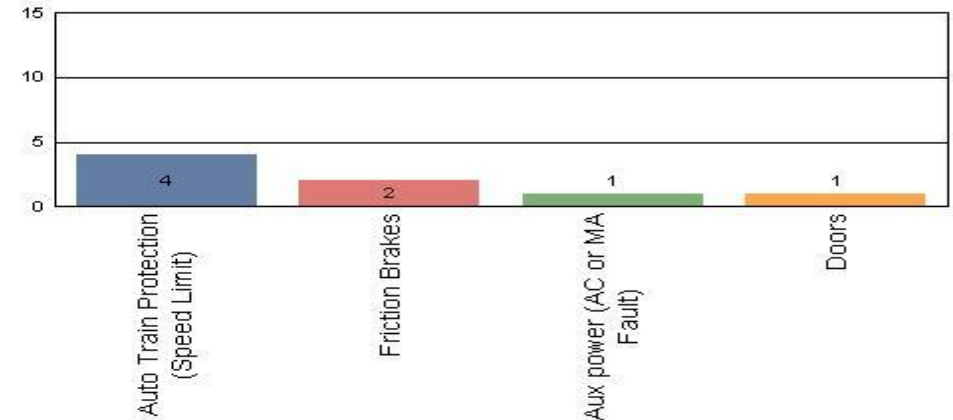
## Metro Blue Line (Div 11)

### Top Incident Categories



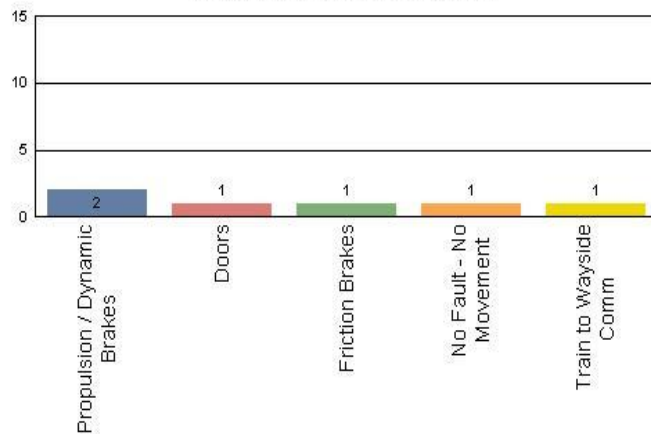
## Metro Red/Purple Line (Div 20)

### Top Incident Categories



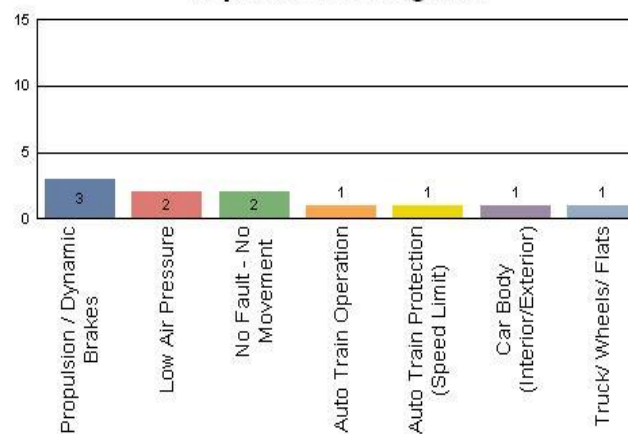
## Metro Expo Line (Div 14)

### Top Incident Categories



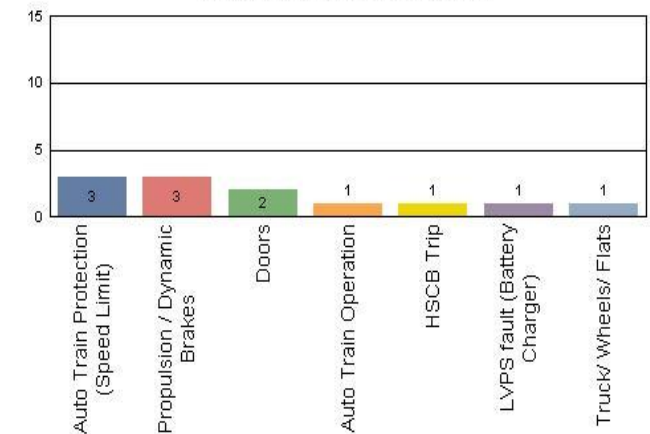
## Metro Green Line (Div 22)

### Top Incident Categories



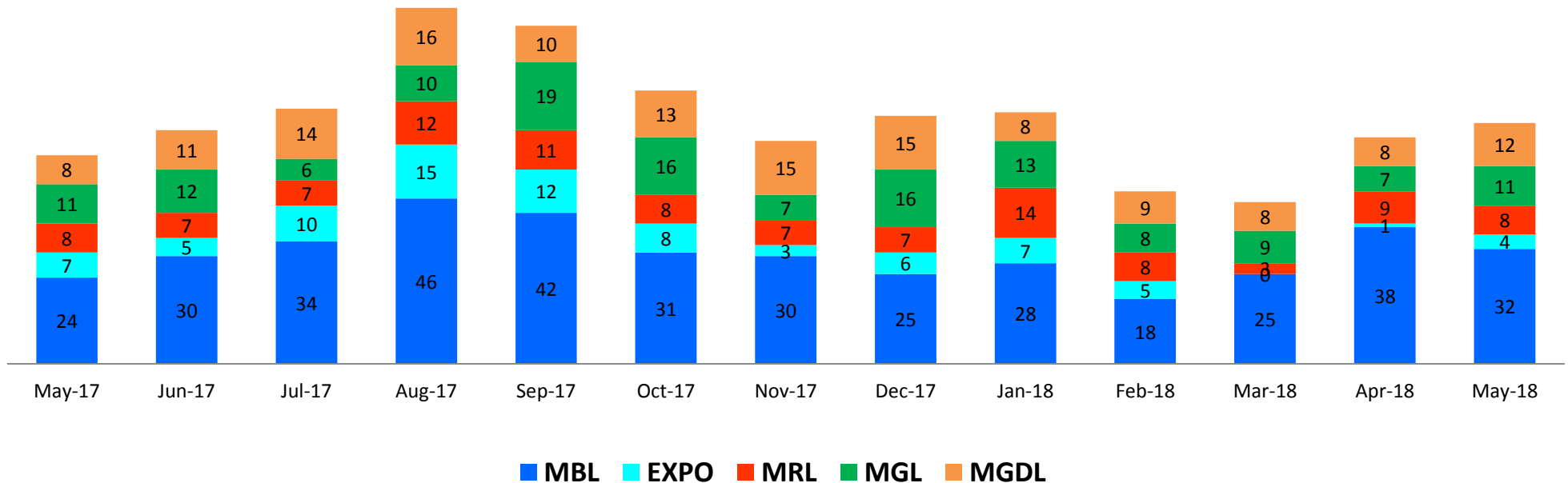
## Metro Gold Line (Div 21 & Div 24)

### Top Incident Categories



# Major Incidents May 2017-2018

## Numbers of Major System Failures (by Line)





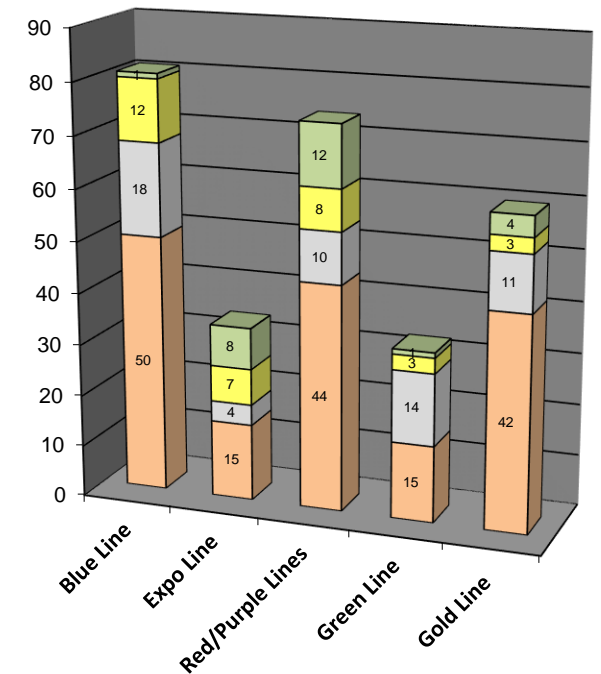
# Preventive Maintenance Compliance

## May 2017-2018

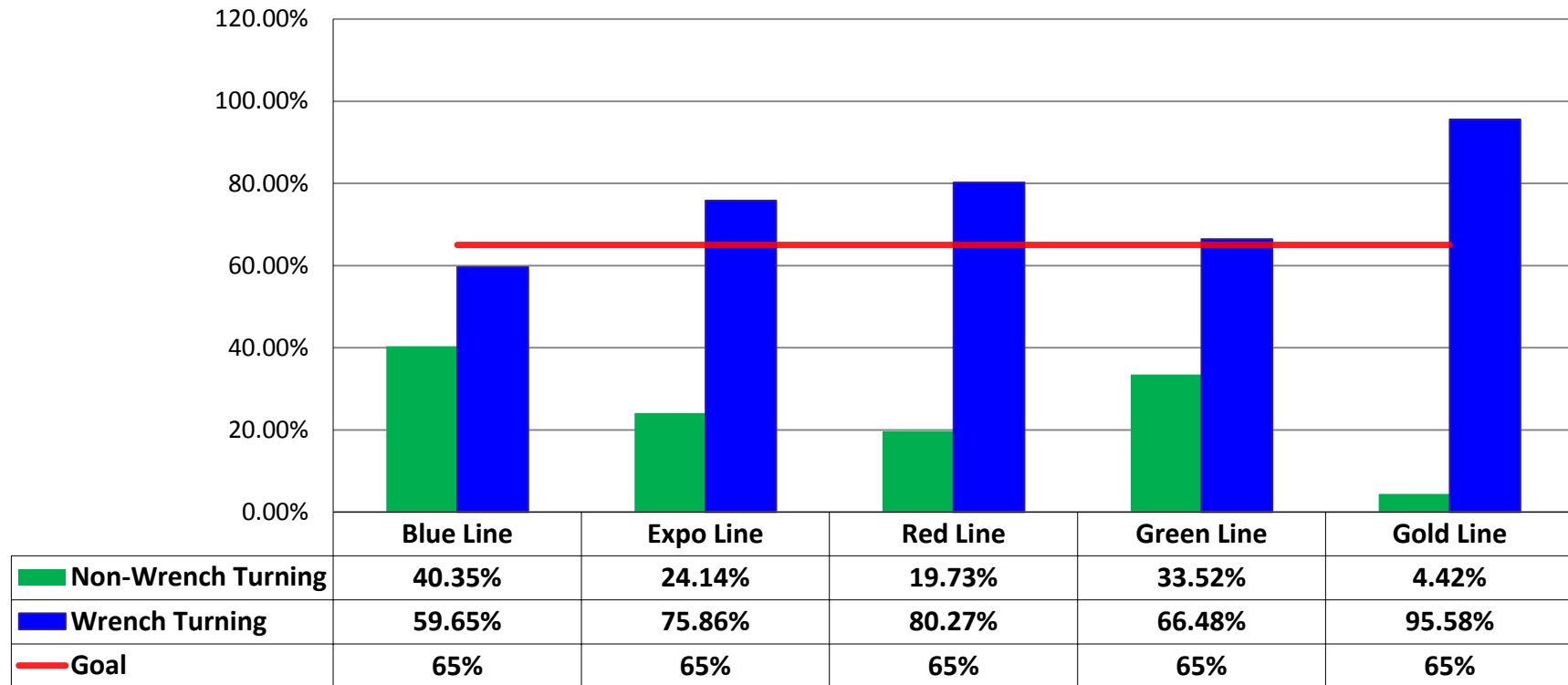
PM Compliance	May-17	Jun-17	Jul-17	Aug-17	Sep-17	Oct-17	Nov-17	Dec-17	Jan-18	Feb-18	Mar-18	Apr-18	May-18
Blue Line	100%	100%	100%	100%	100%	100%	100%	100%	100%	100%	100%	100%	100%
Expo Line	100%	100%	100%	100%	100%	100%	100%	100%	100%	100%	100%	100%	100%
Red/Purple Lines	100%	100%	100%	100%	100%	100%	100%	100%	100%	100%	100%	100%	100%
Green Line	100%	100%	100%	100%	100%	100%	100%	100%	100%	100%	100%	100%	100%
Gold Line	100%	98%	100%	100%	100%	100%	100%	100%	99%	100%	100%	100%	100%

Number of Preventive Maintenance Inspections - May 2018					
Line	A level	B level	C level	D level	Totals
Blue Line	50	18	12	1	81
Expo Line	15	4	7	8	34
Red/Purple Lines	44	10	8	12	74
Green Line	15	14	3	1	33
Gold Line	42	11	3	4	60
<b>Totals:</b>	<b>166</b>	<b>57</b>	<b>33</b>	<b>26</b>	<b>282</b>

Explanation of PM Inspection levels		Miles			
Line	Type	A level	B level	C level	D level
Blue/Expo Lines	P865/P2020	5,000	15,000	30,000	60,000
Blue/Expo Lines	P2000	7,500	22,500	45,000	90,000
Red/Purple Lines	A650	7,500	22,500	45,000	90,000
Green Line	P2000	7,500	22,500	45,000	90,000
Gold Line	P2550	10,000	30,000	60,000	120,000
Gold/Expo Lines	P3010	10,000	30,000	60,000	120,000



# RFS Leader Wrench Turning May 2018



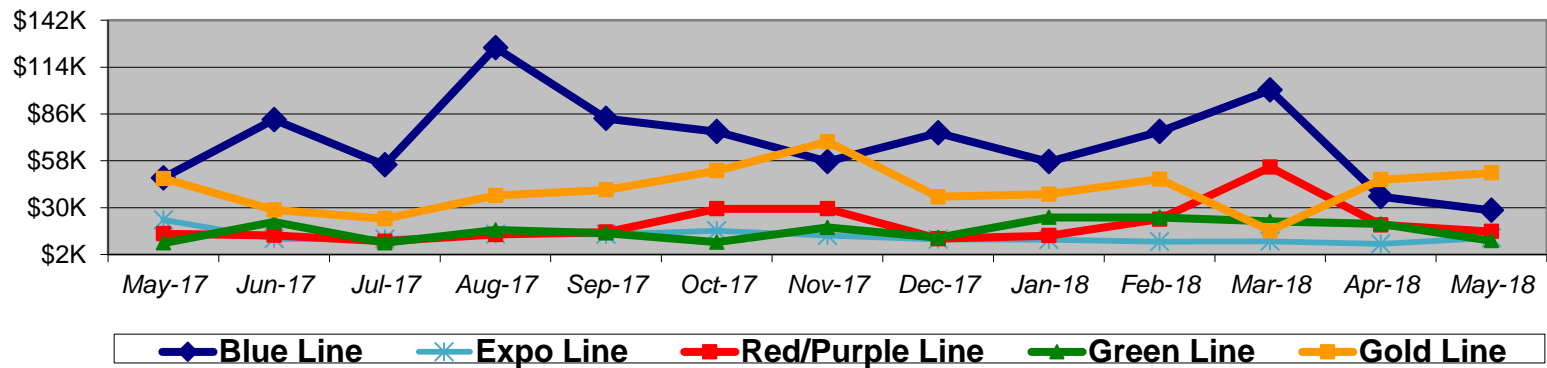
**Notes:** Labor hours contributed by Maint Specialist Leader, Rail Body/Paint Repair Leader, and Maint Specialist Temporary Leader

# Vandalism & Graffiti Report

## May 2017-2018

Graffiti Costs

	May-17	Jun-17	Jul-17	Aug-17	Sep-17	Oct-17	Nov-17	Dec-17	Jan-18	Feb-18	Mar-18	Apr-18	May-18	13-Month Period
Blue Line	\$48K	\$83K	\$56K	\$126K	\$83K	\$75K	\$58K	\$75K	\$57K	\$75K	\$100K	\$37K	\$28K	\$901K
Expo Line	\$23K	\$11K	\$11K	\$14K	\$14K	\$16K	\$13K	\$11K	\$11K	\$10K	\$10K	\$8K	\$12K	\$165K
Red/Purple Line	\$14K	\$13K	\$10K	\$14K	\$15K	\$29K	\$29K	\$11K	\$13K	\$23K	\$54K	\$20K	\$16K	\$263K
Green Line	\$9K	\$21K	\$9K	\$17K	\$15K	\$9K	\$18K	\$12K	\$24K	\$24K	\$22K	\$20K	\$10K	\$211K
Gold Line	\$47K	\$29K	\$23K	\$37K	\$41K	\$52K	\$69K	\$37K	\$38K	\$47K	\$16K	\$47K	\$51K	\$534K
Totals:	\$141K	\$158K	\$109K	\$208K	\$168K	\$182K	\$188K	\$146K	\$144K	\$180K	\$202K	\$132K	\$117K	\$2,074K



May 2018 Vandalism & Graffiti - All Rail				
	Qty	Labor	Materials	Totals
Windows Replaced	22	\$ 6,756	\$ 6,449	\$ 13,205
Vandal Shields Replaced	554	\$ 15,813	\$ 11,517	\$ 27,330
Seats Cleaned	127	\$ 1,200	\$ 797	\$ 1,997
Seats Inserts Replaced	569	\$ 26,303	\$ 19,050	\$ 45,353
Graffiti Removal - Other	1,322	\$ 14,279	\$ 10,561	\$ 24,840
Repainting Panels	135	\$ 4,252	\$ -	\$ 4,252
<b>Totals</b>	<b>2,729</b>	<b>\$ 68,603</b>	<b>\$ 48,374</b>	<b>\$ 116,977</b>

# Vandalism & Graffiti Pictures

## May 2018

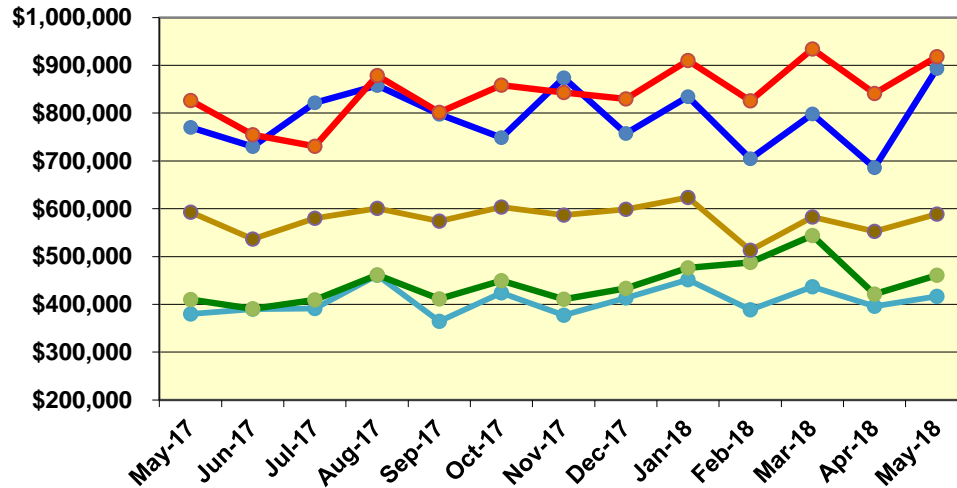
### Blue Line



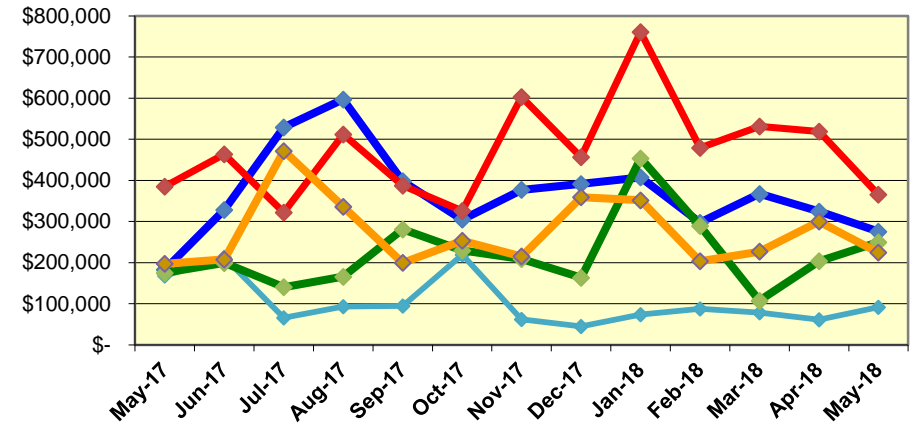
# Labor and Material Costs

## May 2017-2018

Labor Costs



Material Costs



May-17	Jun-17	Jul-17	Aug-17	Sep-17	Oct-17	Nov-17	Dec-17	Jan-18	Feb-18	Mar-18	Apr-18	May-18
--------	--------	--------	--------	--------	--------	--------	--------	--------	--------	--------	--------	--------

Labor Costs

	May-17	Jun-17	Jul-17	Aug-17	Sep-17	Oct-17	Nov-17	Dec-17	Jan-18	Feb-18	Mar-18	Apr-18	May-18
Blue Line	\$ 770,245	\$ 730,183	\$ 822,077	\$ 857,616	\$ 797,683	\$ 749,009	\$ 874,166	\$ 757,379	\$ 834,543	\$ 704,295	\$ 798,589	\$ 686,125	\$ 893,054
Expo Line	\$ 379,871	\$ 389,878	\$ 391,095	\$ 461,075	\$ 364,430	\$ 423,859	\$ 377,003	\$ 413,302	\$ 451,261	\$ 388,329	\$ 436,850	\$ 396,147	\$ 417,036
Red/Purple Lines	\$ 826,461	\$ 754,862	\$ 730,783	\$ 878,453	\$ 801,722	\$ 858,679	\$ 843,202	\$ 829,663	\$ 909,988	\$ 825,697	\$ 934,421	\$ 841,172	\$ 918,422
Green Line	\$ 410,146	\$ 390,662	\$ 409,313	\$ 461,320	\$ 411,714	\$ 449,839	\$ 410,869	\$ 433,318	\$ 476,459	\$ 487,669	\$ 543,685	\$ 421,588	\$ 460,856
Gold Line	\$ 593,070	\$ 536,404	\$ 580,341	\$ 600,583	\$ 574,080	\$ 603,761	\$ 586,885	\$ 598,943	\$ 623,485	\$ 513,210	\$ 582,935	\$ 552,474	\$ 588,640
Totals	\$ 2,979,794	\$ 2,801,989	\$ 2,933,607	\$ 3,259,046	\$ 2,949,629	\$ 3,085,146	\$ 3,092,125	\$ 3,032,606	\$ 3,295,737	\$ 2,919,200	\$ 3,296,480	\$ 2,897,507	\$ 3,278,009

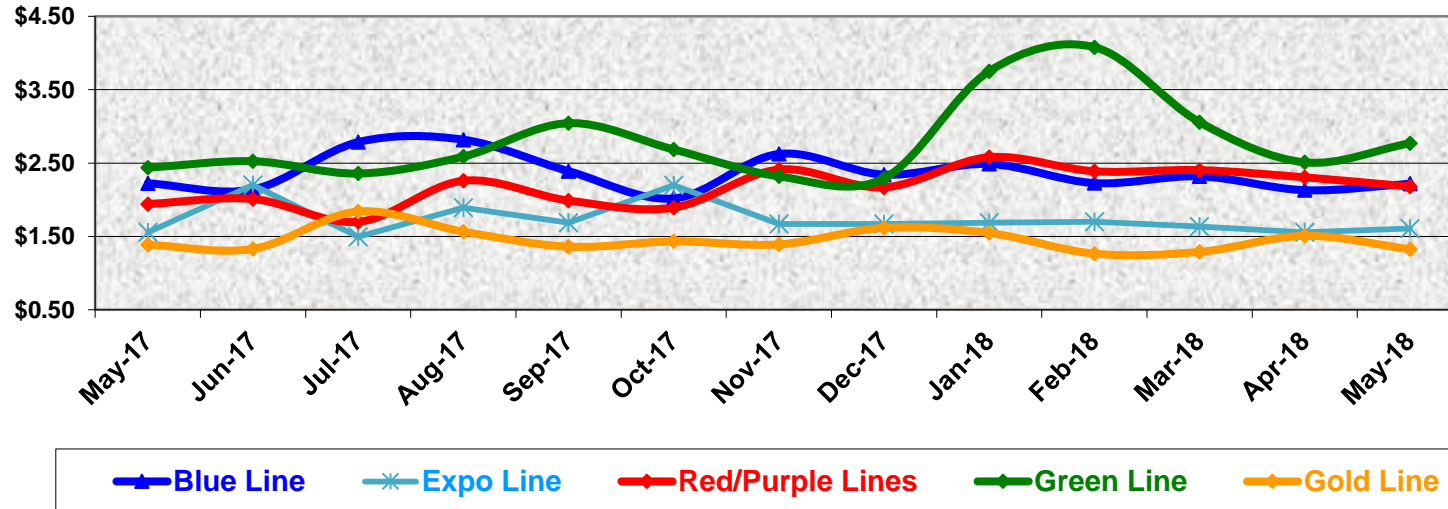
Material Costs

	May-17	Jun-17	Jul-17	Aug-17	Sep-17	Oct-17	Nov-17	Dec-17	Jan-18	Feb-18	Mar-18	Apr-18	May-18
Blue Line	\$ 182,846	\$ 328,206	\$ 529,007	\$ 596,865	\$ 397,951	\$ 304,627	\$ 376,903	\$ 391,572	\$ 407,451	\$ 297,011	\$ 367,074	\$ 324,407	\$ 275,271
Expo Line	\$ 167,428	\$ 212,682	\$ 65,432	\$ 93,233	\$ 94,730	\$ 218,980	\$ 61,966	\$ 44,504	\$ 73,843	\$ 87,318	\$ 78,411	\$ 61,078	\$ 91,574
Red/Purple Lines	\$ 384,776	\$ 463,957	\$ 321,863	\$ 511,576	\$ 386,990	\$ 325,604	\$ 602,668	\$ 456,278	\$ 760,795	\$ 479,382	\$ 531,234	\$ 518,550	\$ 365,147
Green Line	\$ 174,969	\$ 199,040	\$ 140,168	\$ 165,820	\$ 280,752	\$ 229,311	\$ 208,844	\$ 163,235	\$ 453,737	\$ 289,320	\$ 107,325	\$ 203,363	\$ 249,741
Gold Line	\$ 197,220	\$ 207,555	\$ 471,378	\$ 336,025	\$ 199,318	\$ 253,138	\$ 215,172	\$ 359,058	\$ 351,690	\$ 203,571	\$ 226,568	\$ 300,043	\$ 224,600
Totals	\$ 1,107,239	\$ 1,411,440	\$ 1,527,848	\$ 1,703,519	\$ 1,359,742	\$ 1,331,660	\$ 1,465,553	\$ 1,414,648	\$ 2,047,515	\$ 1,356,602	\$ 1,310,612	\$ 1,407,440	\$ 1,206,333

# Cost Per Mile May 2017-2018

Cost per mile:	May-17	Jun-17	Jul-17	Aug-17	Sep-17	Oct-17	Nov-17	Dec-17	Jan-18	Feb-18	Mar-18	Apr-18	May-18	Average
Blue Line	\$2.22	\$2.14	\$2.79	\$2.82	\$2.39	\$2.02	\$2.62	\$2.34	\$2.49	\$2.23	\$2.32	\$2.13	\$2.22	\$2.36
Expo Line	\$1.56	\$2.20	\$1.49	\$1.89	\$1.69	\$2.20	\$1.67	\$1.67	\$1.69	\$1.70	\$1.63	\$1.55	\$1.61	\$1.73
Red/Purple Lines	\$1.94	\$2.01	\$1.70	\$2.26	\$1.99	\$1.89	\$2.41	\$2.17	\$2.58	\$2.39	\$2.40	\$2.31	\$2.18	\$2.17
Green Line	\$2.44	\$2.52	\$2.36	\$2.59	\$3.04	\$2.68	\$2.32	\$2.29	\$3.75	\$4.08	\$3.06	\$2.51	\$2.77	\$2.80
Gold Line	\$1.38	\$1.33	\$1.84	\$1.56	\$1.36	\$1.43	\$1.39	\$1.62	\$1.55	\$1.26	\$1.29	\$1.51	\$1.32	\$1.45

## Cost per Mile



# ATU Absences vs. Overtime

## May 2018

ABSENCE TYPE and HOURS	3941 Blue	3947 Expo	3942 Red	3943 Green	3944 Gold	3948 Monrovia	Total
AWP-ABSENT W/O PERMISSION	20	-	-	-	-	-	20
BER-BEREAVEMENT	24	40	56	-	-	-	120
CTO-COMPENSATORY TIME OFF	409	269	768	343	36	497	2,322
CUT-EMPLOYEE LEAVES EARLY	-	4	3	-	-	-	6
DSL-DISABILITY LEAVE/LONG	1,232	360	-	272	368	448	2,680
EFH-EMG. FLOAT HOL.	16	-	248	16	8	16	304
ETO-EXCUSED TIME OFF	44	83	44	14	5	19	209
FMI-FAM IND INJURY	184	-	-	184	-	-	368
FML-FAMILY CARE LEAVE	480	112	352	19	44	708	1,715
FMS-FAMILY LEAVE SICK	82	-	138	8	36	177	440
HLF-HOLIDAY FLOATING	296	128	536	272	48	232	1,512
HNP-HOLIDAY NOT PAID	8	24	8	24	-	-	64
HOL-HOLIDAY LEGAL	520	136	592	104	104	368	1,824
II-INDUSTRIAL INJURY	16	80	56	-	-	-	152
IPD-INJURED PARTIAL DAY	-	-	1	-	-	-	1
JUR-JURY DUTY	32	8	8	8	8	8	72
LC1-LABOR CODE 233	193	176	361	124	112	116	1,082
LTI-OCCPIL/LONGTRM INJ LEAVE	536	176	184	8	-	-	904
OWP-OFF WITH PERMISSION	104	0	-	-	-	-	104
RTO-REQUESTED TIME OFF-NO PAY	42	16	24	-	-	15	96
SCK-SICK PAY	128	120	216	152	51	162	829
SCW-SICK WITHOUT PAY	136	32	16	563	7	16	770
SPN-SCHOOL PARTNER NOT PAID	-	-	-	8	-	28	36
TAR-TARDY	2	2	2	2	1	0	10
UNP-UNION BUS PAID	-	17	-	-	-	-	17
VAC-VACATION	974	351	1,343	476	236	712	4,092
*TRAINING	801	30	3	143	18	29	1,024
<b>Total Absence Hours</b>	<b>6,278</b>	<b>2,163</b>	<b>4,959</b>	<b>2,739</b>	<b>1,082</b>	<b>3,551</b>	<b>20,773</b>
**ATU Number of Work Force (active)	103	40	106	46	17	59	371
Full Work Force hours/month	17,850	6,932	18,370	7,972	2,946	10,226	64,294
<b>Absence as a % of Work Force</b>	<b>35%</b>	<b>31%</b>	<b>27%</b>	<b>34%</b>	<b>37%</b>	<b>35%</b>	<b>32%</b>

OVERTIME TYPE and HOURS	3941 Blue	3947 Expo	3942 Red	3943 Green	3944 Gold	3948 Monrovia	Total
CTB-COMPENSATORY TIME TO BANK	89	15	37	8	-	33	182
OTP-PREM OVERTIME	4,529	2,121	4,802	2,515	92	1,340	15,399
WLO-Worked Lunch Overtime	137	127	254	79	26	98	721
<b>Total Overtime Hours</b>	<b>4,755</b>	<b>2,263</b>	<b>5,093</b>	<b>2,601</b>	<b>117</b>	<b>1,471</b>	<b>16,301</b>
<b>Overtime as a % of Work Force</b>	<b>27%</b>	<b>33%</b>	<b>28%</b>	<b>33%</b>	<b>4%</b>	<b>14%</b>	<b>25%</b>

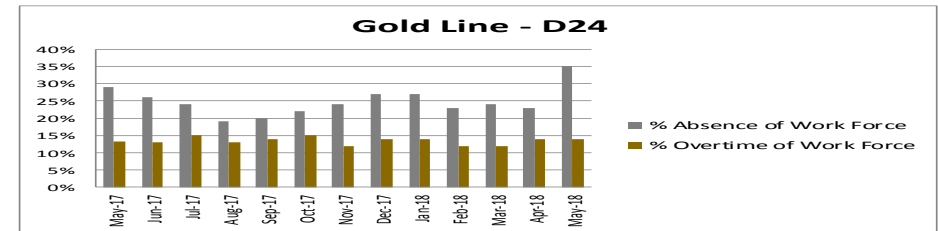
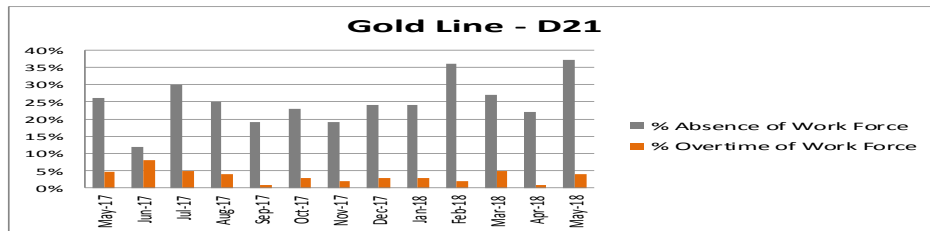
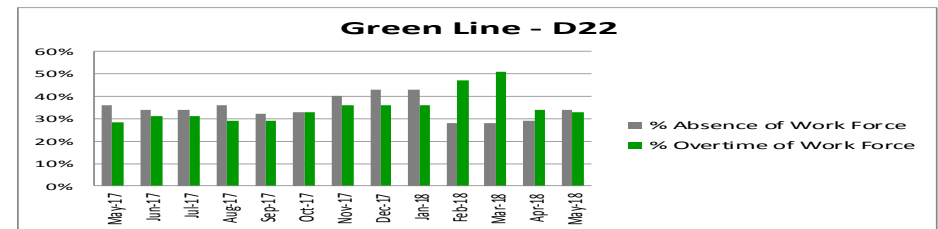
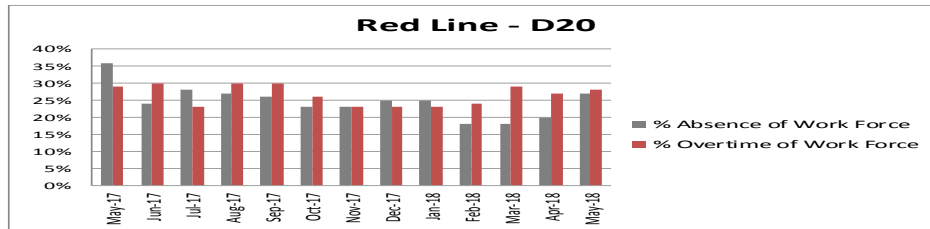
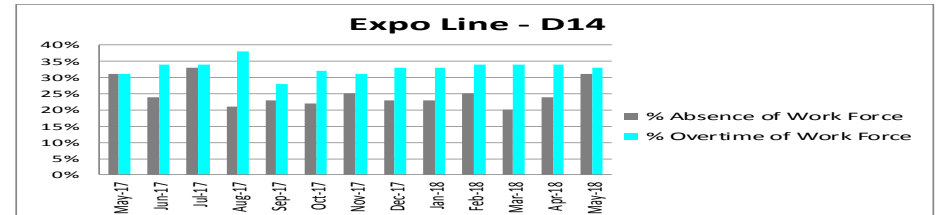
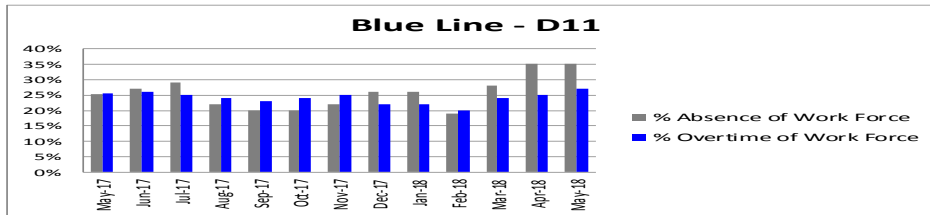
\*Training hours captured by Instruction Department are added to Absences Report.

\*\*ATU Employee Numbers from ATU Manpower Status Report (last week of the month)

Note: Overtime also covers other required activities, including Training, Component Overhaul, and Special Events.



# ATU - %Absence & %Overtime of Work Force May 2017-2018



% Absence of Work Force	May-17	Jun-17	Jul-17	Aug-17	Sep-17	Oct-17	Nov-17	Dec-17	Jan-18	Feb-18	Mar-18	Apr-18	May-18	13-Month Average
Blue Line D11	25%	27%	29%	22%	20%	20%	22%	26%	26%	19%	28%	35%	35%	26%
Expo Line D14	31%	24%	33%	21%	23%	22%	25%	23%	23%	25%	20%	24%	31%	25%
Red Line D20	36%	24%	28%	27%	26%	23%	23%	25%	25%	18%	18%	20%	27%	25%
Green Line D22	36%	34%	34%	36%	32%	33%	40%	43%	43%	28%	28%	29%	34%	35%
Gold Line D21	26%	12%	30%	25%	19%	23%	19%	24%	24%	36%	27%	22%	37%	25%
Gold Line D24	29%	26%	24%	19%	20%	22%	24%	27%	27%	23%	24%	23%	35%	25%

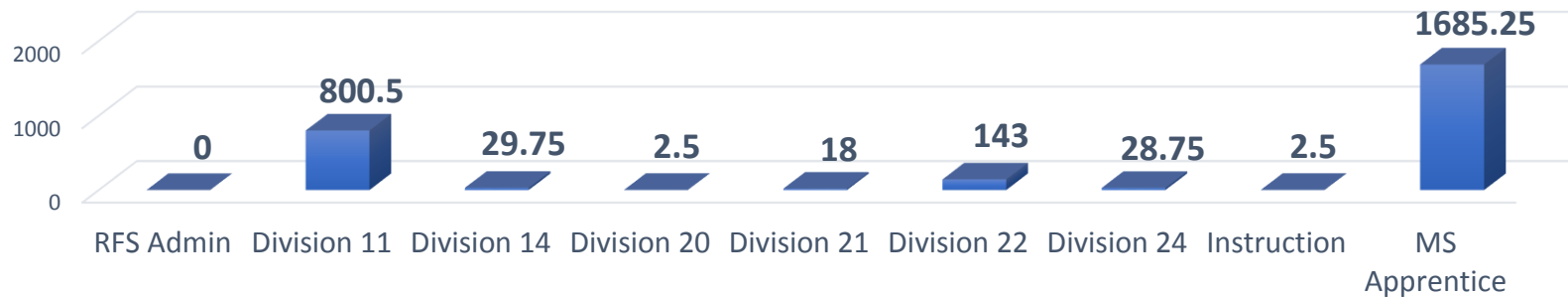
% Overtime of Work Force	May-17	Jun-17	Jul-17	Aug-17	Sep-17	Oct-17	Nov-17	Dec-17	Jan-18	Feb-18	Mar-18	Apr-18	May-18	13-Month Average
Blue Line D11	26%	26%	25%	24%	23%	24%	25%	22%	22%	20%	24%	25%	27%	24%
Expo Line D14	31%	34%	34%	38%	28%	32%	31%	33%	33%	34%	34%	34%	33%	33%
Red Line D20	29%	30%	23%	30%	30%	26%	23%	23%	23%	24%	29%	27%	28%	27%
Green Line D22	28%	31%	31%	29%	29%	33%	36%	36%	36%	47%	51%	34%	33%	35%
Gold Line D21	5%	2%	5%	4%	1%	3%	2%	3%	3%	2%	5%	1%	4%	3%
Gold Line D24	13%	13%	15%	13%	14%	15%	12%	14%	14%	12%	12%	14%	14%	13%

# Training - RFS Instruction Department

## May 2018

### RFS Training Hours

Team	No. Employees	Vehicle Training	RFS Other	Metro Provided	Total Training Hours
RFS Admin	-	-	-	-	-
Division 11	20	760	6	34	801
Division 14	19	-	5	25	30
Division 20	2	-	-	3	3
Division 21	3	-	-	18	18
Division 22	35	-	-	143	143
Division 24	8	-	-	29	29
Instruction	2	-	1	1	3
MS Apprentice	21	1,672	1	12	1,685
<b>Grand Total</b>	<b>110</b>	<b>2,432</b>	<b>13</b>	<b>265</b>	<b>2,710</b>



#### Description

Vehicle Training = Training related to Fleet Maintenance

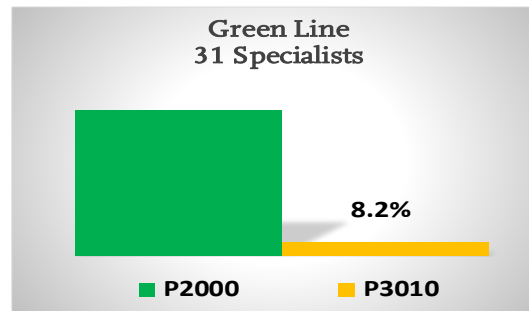
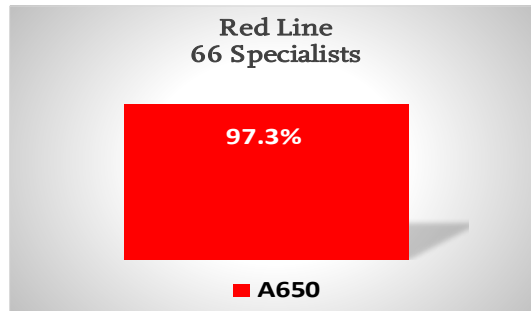
RFS Other = Training Created by RFS Instruction but not related to Vehicle Training

Metro Provided = Training provided outside RFS Training (OD&T, Transportation)

Total Training Hours = Total amount of man-hours spent by RFS in any kind of training

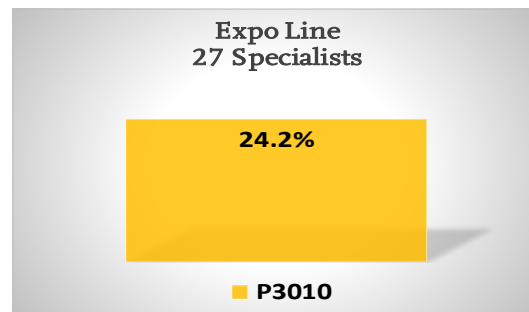
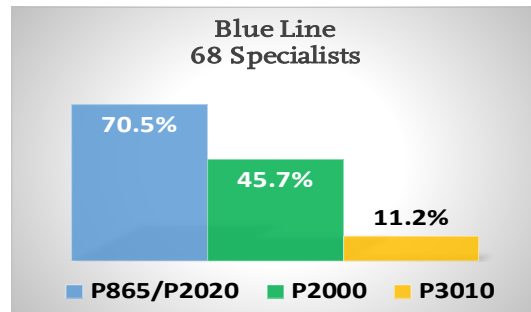
# Maintenance Specialists Vehicle Training Levels

## May 2018



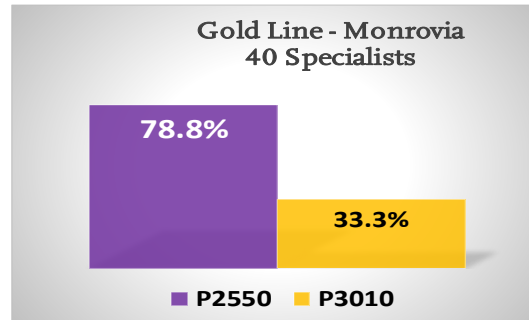
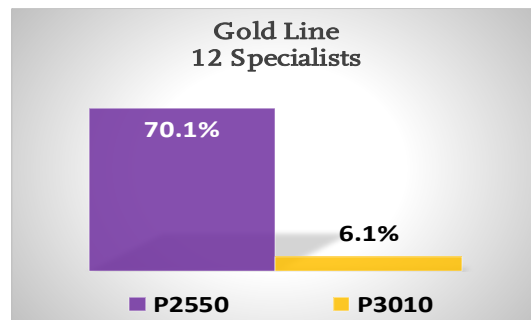
Red Line	66	Specialists
Average Experience	12.9	Years
A650	97.3%	Training Complete

Green	31	Specialists
Average Experience	11.2	Years
P2000	92.7%	Training Complete
P3010	8.2%	Training Complete



Blue Line	68	Specialists
Average Experience	13.8	Years
P865/P2020	70.5%	Training Complete
P2000	45.7%	Training Complete
P3010	11.2%	Training Complete

Expo Line	27	Specialists
Average Experience	4.3	Years
P3010	24.2%	Training Complete



Gold Line	12	Specialists
Average Experience	6.5	Years
P2550	70.1%	Training Complete
P3010	6.1%	Training Complete

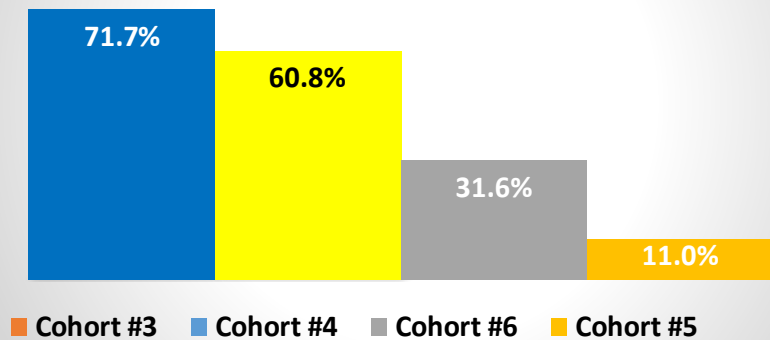
Gold Line - Monrovia	40	Specialists
Average Experience	8.7	Years
P2550	78.8%	Training Complete
P3010	33.3%	Training Complete



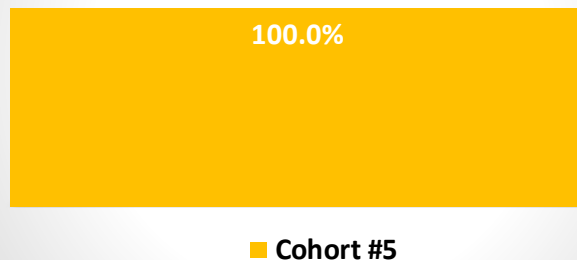
\* SHIFT IN NUMBERS REPRESENT THE MOVEMENT OF EMPLOYEES WITH LESS EXPERIENCE AND TRAINING, SUCH AS APPRENTICES MOVING TO THE MAINTENANCE SPECIALIST LEVEL

# Maintenance Specialists Apprenticeship Progress May 2018

## In-House Training 18 Specialist Apprentices



## LATTC Training 5 Specialist Apprentices



## JAC Program | MS Apprenticeship

Cohort #3	4	Apprentices
Time in Program	0.8	Years
Scheduled Training	71.7%	Training Complete
Est. Graduation Date:	8/27/2018	

Cohort #4	3	Apprentices
Time in Program	0.5	Years
Scheduled Training	60.8%	Training Complete
Est. Graduation Date:	11/19/2018	

Cohort #5	5	Apprentices
Time in Program	0.5	Years
Scheduled Training	11.0%	
Est. Graduation Date:	5/21/2019	

Cohort #6	9	Apprentices
Time in Program	0.1	Years
Scheduled Training	31.6%	Training Complete
Est. Graduation Date:	4/9/2019	

Cohort #5	5	Apprentices
Time in Program	0.5	Years (LATTC)
LATTC Training	100.0%	
Est. Graduation Date:	5/21/2019	