



Metro

Metropolitan Transportation Authority

One Gateway Plaza
Los Angeles, CA 90012-2952

213.922.2000 Tel
metro.net

February 23, 2024

TO: Distribution

Kevin Grady
for: FROM: Gregory Gastelum
Project Manager

SUBJECT: East San Fernando Valley LRT Project
January 2024 Monthly Project Status Report

Enclosed is the Monthly Project Status Report for the East San Fernando Valley (ESFV) LRT Project. This report contains the Los Angeles County Metropolitan Transportation Authority's (LACMTA) representation of the ESFV LRT Project status for the period ending February 2, 2024.

If you have any questions regarding this report or its supporting information, please contact Kevin Grady, Deputy Executive Officer of Program Control at (213) 294-1439.

Enclosure

EAST SAN FERNANDO VALLEY LIGHT RAIL TRANSIT PROJECT



East San Fernando Valley Light Rail Transit

MONTHLY PROJECT STATUS REPORT

THE PREPARATION OF THIS DOCUMENT HAS BEEN FINANCED IN PART THROUGH A GRANT FROM THE U. S. DEPARTMENT OF TRANSPORTATION, FEDERAL TRANSIT ADMINISTRATION (FTA).

January 2024

TABLE OF CONTENTS

PROJECT OVERVIEW.....	3
EXECUTIVE SUMMARY	6
PROJECT UPDATE	11
PROJECT SCHEDULE.....	11
PROJECT COST	12
PROJECT COST ANALYSIS – 865521	12
COST CONTINGENCY	13
SUMMARY OF CONTRACT MODIFICATIONS.....	14
RISK MANAGEMENT.....	15
DISADVANTAGED BUSINESS ENTERPRISE (DBE).....	17
PROJECT LABOR AGREEMENTS (PLA).....	19
FINANCIAL/GRANT	20
PROJECT ORGANIZATION AND STAFFING	21
REAL ESTATE	22
LRVs.....	23
QUALITY ASSURANCE	24
ENVIRONMENTAL.....	24
CONSTRUCTION AND COMMUNITY RELATIONS.....	25
METRO ART	27
SAFETY AND SECURITY	27
APPENDIX	28
CHRONOLOGY OF EVENTS	28

PROJECT OVERVIEW

Project Background

The East San Fernando Valley Light Rail Transit Project (Project) is a 6.7-mile at-grade double-track light rail line in the median of Van Nuys Boulevard from Oxnard Street to San Fernando Road within the City of Los Angeles. The tracks will be fully separated from automobile traffic, except at signalized intersections or controlled at-grade pedestrian crossings. There will be 11 center-platform stations spaced approximately every ¾ mile. The Project includes the procurement of the Light Rail Vehicles (LRV) which will operate along the route. To support train operations, a Maintenance and Storage Facility (MSF) will be built west of Van Nuys Boulevard at Keswick Street.



The Project configuration is based on years of planning and environmental work that is reflected in the following milestones:

- Metro Board approval of the Alternative Analysis – 2011
- Initiation of the Draft Environmental Impact Statement/Report – March 2013 (Notice of Preparation/Notice of Intent)
- Initiation of Preliminary Engineering (PE) – August 2019
- Metro Board certifies the Final Environmental Impact Report – December 2020
- Federal Transit Administration (FTA) issuance of the Record of Decision – January 2021
- FTA Expedited Project Delivery (EPD) Program Application – December 2021
- FTA issues Letter of Intent EPD Program - May 2022
- Metro Board approval of EIR Addendum – October 2023.

Major Procurements

Beyond utilizing Metro’s experienced staff throughout, the Project will contract for a host of services to execute the Project. The major contract scopes are identified below:

General Engineering Support Services: Gannett Fleming

- Design and support for utilities, guideway, stations, MSF, and roadwork; services for conceptual, preliminary, and select final phases of the Project; includes Design Support During Construction (DSDC).

Systems Engineering Support Services: SecoTrans JV

- Design of rail, traction power, overhead catenary, train control, and communications. Includes services for conceptual, preliminary, and final phases of select defined engineering; includes Design Support During Construction (DSDC).

Construction Management Support Services: AMM JV

- Staffing of experienced construction personnel versed in technical and administrative functions through all phases and disciplines of the work. Staffing complements Metro roles and is expected to run through start-up.

Environmental Support Services: AMM JV

- Oversight of environmental provisions as they relate to ground disturbing operations, hazardous materials handling, and numerous provisions addressed in the FEIS. Work underway is in support of Utility Adjustment Contract potholing as well as assessments of hazardous zones throughout the alignment.

Solar Energy Public Private Partnership (P3): PCS Energy

- The contract scope of work to design, supply, and install solar panel and energy storage systems on select roof sections of the MSF. The firm is also responsible for the Post Installation Monitoring and Oversight of the Operations and Maintenance for the solar energy-generating facilities over a ten-year period.

Progressive Design Build (PDB) Contract: San Fernando Transit Constructors (SFTC) JV

- The initial contract with SFTC is for Phase 1 and includes validation of the base design, development of value engineering solutions, and the submittal of cost and schedule proposals for the Phase 2 design and construction of the guideway, stations, and MSF. At the conclusion of Phase 1, Metro will negotiate the cost and schedule of the Phase 2 Supplement with SFTC, and upon execution, SFTC will proceed with design and construction. In order to accelerate the project, certain elements of the work may be negotiated and executed separately ahead of Phase 2 and are known as Early Work Packages (EWP). The Phase 1 Notice to Proceed (NTP) was awarded on April 14, 2023.

Advanced Utility Adjustment Construction Contract: W.A. Rasic (Awarded)

- The scope is to perform utility relocations of Los Angeles Department of Water and Power (LADWP) utilities along Van Nuys Boulevard between Vose Street and Vanowen Street, in advance of major construction operations.

Light Rail Vehicle Contracts:

- The Project will first contract with an experienced consultant team who will assist Metro in developing the technical aspects of the LRV procurement documents.
- LRV Consultant Request for Proposal (RFP) was issued for solicitation on October 16, 2023. Proposals were received on January 5, 2024. The contract is scheduled to be awarded in the first half of 2024.
- LRV Manufacturing Contract for the design, manufacture, and delivery of the LRVs is scheduled to be advertised in early 2025 with award later that year.

EXECUTIVE SUMMARY

Design Status

Gannett Fleming (GF) is continuing with the development of the 60% utility composite drawings for the project alignment. GF also continues to work on Utility Adjustment (UA) design packages, the status of which are listed below:

- UA 2 &3 – 100% submitted 2/4/2024; AFC by Spring 2024
- UA 4 – AFC approved 11/15/23 and issued to SFTC 11/15/23
- UA 5 – 85% design to be submitted Feb-2024; AFC by Spring 2024
- UA 6 – AFC approved 11/15/23 and issued to SFTC 11/16/23
- UA 7 – 100% design submitted 1/29/2024; AFC by Spring 2024
- UA 8 – 85% design to be submitted March-2024; AFC by Spring 2024

Advanced Construction Status

In advance of the main contract, Metro awarded C1220 - Advanced Utility Adjustment (AUA) DWP Power Design #1 contracted to W.A. Rasic for utility relocation of DWP underground power infrastructure along Van Nuys Boulevard between Vose Street and Vanowen Street. Notice to Proceed (NTP) was issued on December 1, 2022. W.A. Rasic has completed their base contract work of installing conduit ductbanks and vaults for DWP power utilities. There is a small amount of change order work remaining and LADWP needs to complete their intercept work at the vaults. The project is forecast to be substantially complete in early 2024.

Progressive Design-Build Status

SFTC is nearly complete with their Phase 1 preconstruction project deliverables. The final Cultural Competency Plan and Final Validation of the Base Design were submitted and are under review by Metro. The Final Value Engineering Plan was reviewed by Metro and returned Revise and Resubmit in January.

Project efforts are now focused on the negotiation and execution of the Early Work Packages (EWP). EWPs are an integral component of the PDB delivery method and allow the Project to advance work from Phase 2 in support of reducing the construction schedule and providing the necessary information to initiate negotiations of a Guaranteed Maximum Price for PDB Phase 2. The first four critical EWPs which are scheduled to be executed in the Spring of 2024 are:

EWP-01 - Technical Studies – This EWP is to perform technical studies and enabling works crucial to advancing the design and construction of the Project. A Notice to Proceed (NTP) with this contract modification is anticipated in early 2024 Rough Order of Magnitude Cost Estimate (ROM) - \$5M

EWP-02 – Field IPMO and Warehouse – This EWP will provide the office space necessary for SFTC and Metro staff to manage the construction of EWP utility adjustments as well as required material storage laydown areas. A NTP with this contract modification is anticipated in early 2024. ROM - \$9M

EWP-03 – Utility Adjustments (UA) 4/6 - This EWP is for the construction for two of the seven remaining DWP utility adjustment work packages designed by Metro. This will be the first PDB construction activity for the Project with a NTP for this contract modification anticipated in early 2024. ROM - \$30M

EWP-04 – Final Design – In the PDB delivery method, the PDB contractor, SFTC, is responsible for taking the preliminary design provided by the Owner, Metro, and progressing it to a final design, providing Approved for Construction Plans and Specifications. Unlike a conventional design-build, the design advancement with the PDB starts prior to the award of the main construction contract. This enables the Owner and PDB to estimate and negotiate off of more developed plans and specifications, thereby reducing risk and uncertainty, resulting in a lower construction cost and more precise project schedule.

The negotiations with SFTC and their designer, AECOM, for EWP-04 are ongoing with a NTP for this contract modification anticipated in early 2024. The ROM for the initial design phase is \$80M.

Schedule Summary

On December 1, 2023, Metro submitted a draft Federal Full Funding Grant Agreement (FFGA) application to the FTA including a project schedule. The schedule was developed in collaboration between Metro and SFTC. The submitted schedule has a start of revenue service of September 2, 2031. The critical path for the project in 2024 and 2025 runs through the EWP-04 – Final Design.

Budget Summary

The FTA Letter of Intent (LOI) for the Expedited Project Delivery (EPD) Pilot Program dated May 10, 2022, indicated a budget of \$3.635 billion would be acceptable to the FTA. This budget was adjusted to \$3.573 billion to reflect estimated project costs after acceptance into the EPD program.

In February 2023, the Metro Board approved a \$497 million Preconstruction Phase-of-Project Budget. This budget is to fund continued preliminary design, construction management, agency costs, real estate activities, the Advanced Utility Adjustment contract, Phase 1 of the PDB contract, and Early Work Packages (EWP) which will be awarded to SFTC.

In October 2023, the Metro Board approved a Funding Plan supporting the project budget of \$3.573 billion which was included in the submission of the draft FFGA Application. Analysis of the existing commitments and cost forecasts indicate that the existing Preconstruction Budget will be exhausted by the summer of 2025. To best maintain the current schedule within the existing budget, the Project will phase EWP-04 – Final Design, limit the initial award of Utility Relocation EWPs, and manage real estate acquisitions in concert with the proposed phased construction activities reflected in the project schedule.

Key Management Concerns

Real Estate

The Project requires significant Real Estate activities, which include permanent full and partial takes and temporary construction easements. The Project is carefully monitoring the progress of the appraisals and acquisitions to identify any difficult properties early on and ensure that, if needed, the acquisition process or required relocations will not affect the project schedule.

Condensed FFGA Development

The Expedited Project Delivery (EPD) program requires execution of the FFGA within two years of the EPD LOI (May 2024). The review of the draft FFGA application and supporting documents and project risks continue with Metro, FTA, and PMOC meeting to address questions or add clarifications to the information presented by Metro.

Project Construction Photos



WA Rasic reconfigured orientation of 5" conduits 31, 32 and 33.
Location: Northbound lanes of Van Nuys Blvd. at intersecyion of Hart St.



WA Rasic excavating and installing conduits 31, 32, 33 and 21.
Location: Northbound and Southbound lanes of Van Nuys Blvd. at intersection of Hart St.



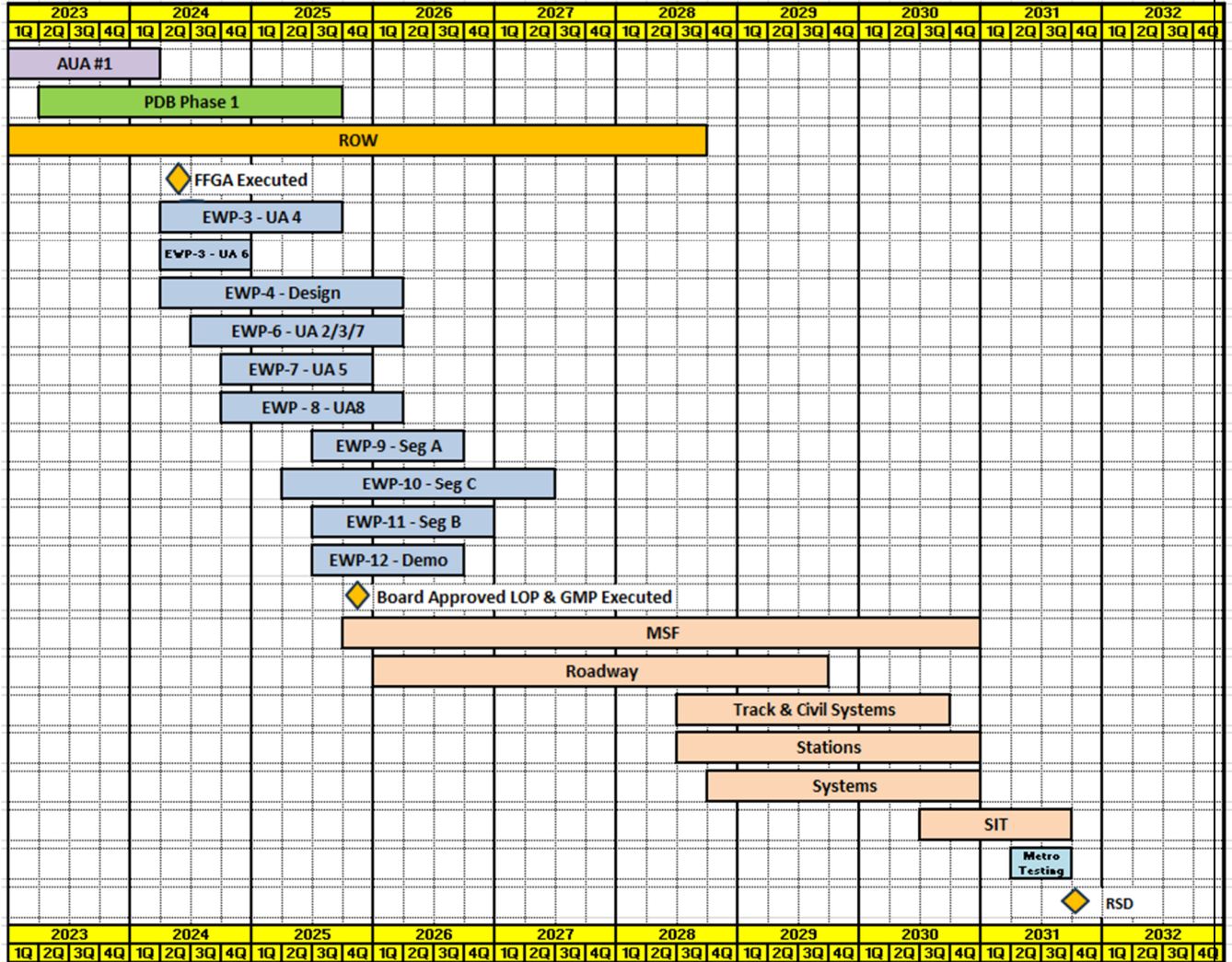
WA Rasic laid out for trench, grind and ground asphalt to recess road plates.
Location: Northbound and Southbound lanes of Van Nuys Blvd. at intersection of Hart St.



WA Rasic pushed mandrel through conduits 31, 32, 33 and 12.
Location: Southbound lanes of Van Nuys Blvd. at intersection of Hart St.

PROJECT UPDATE

PROJECT SCHEDULE



PROJECT COST

Project Cost Analysis – 865521

EAST SAN FERNANDO VALLEY TRANSIT PROJECT (865521)							
COST REPORT							
DOLLARS IN THOUSANDS							
SCC CODE	DESCRIPTION	APPROVED BUDGET AT EPD PROJECT SELECTION	CURRENT PROPOSED FFGA BUDGET	COMMITMENTS	EXPENDITURES	FORECAST PROPOSED FFGA BUDGET	VARIANCE
		A	B	C	D	E	E - A
10	GUIDEWAYS & TRACK ELEMENTS	191,137	105,538	0	0	105,538	-85,600
20	STATIONS, STOPS, TERMINALS, INTERMODAL	122,600	175,147	0	0	175,147	52,547
30	SUPPORT FACILITIES: YARDS, SHOPS, ADMIN, BLDGS	268,706	267,290	0	0	267,290	-1,416
40	SITWORK & SPECIAL CONDITIONS	917,100	928,716	18,604	11,159	928,716	11,616
50	SYSTEMS	259,779	353,983	0	0	353,983	94,204
	CONSTRUCTION SUBTOTAL (10-50)	1,759,323	1,830,674	18,604	11,159	1,830,674	71,351
60	ROW, LAND, EXISTING IMPROVEMENTS	334,396	274,709	2,607	891	274,709	-59,687
70	VEHICLES	212,812	256,834	7	7	256,834	44,022
80	PROFESSIONAL SERVICES	582,389	745,573	143,200	73,780	745,573	163,184
	SUBTOTAL (10-80)	2,888,920	3,107,790	164,417	85,836	3,107,790	218,870
90	UNALLOCATED CONTINGENCY	686,526	405,490	0	0	405,490	-281,035
100	FINANCE CHARGES	60,000	60,000	0	0	60,000	0
	TOTAL PROJECT (10-100)	3,635,445	3,573,280	164,417	85,836	3,573,280	-62,165

NOTE: TOTAL INCURRED COST TO DATE \$85,836,127.

EPD Project Selection: FTA issued the Letter of Intent in May 2022 for a project budget of \$3.635 billion.

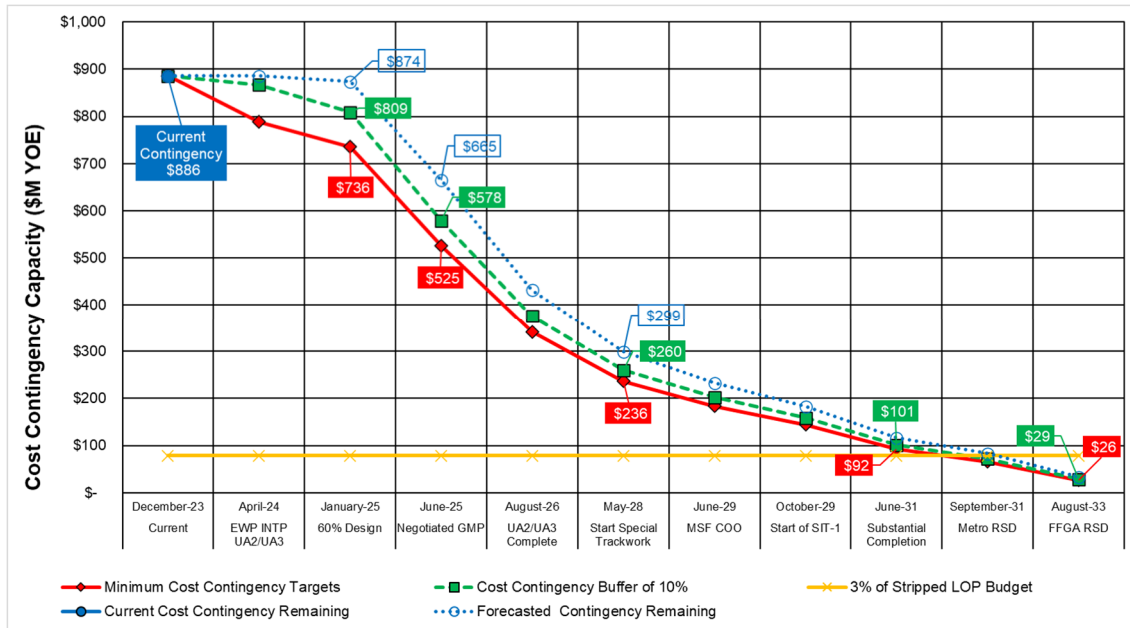
Current Proposed FFGA Budget: In the December 1, 2023 draft FFGA Application Metro submitted a project budget of \$3.573 billion.

Commitments: Commitments increased by \$1.4M this period to \$164.4 million. The increase is primarily for professional services related to the Project.

Expenditures: Expenditures from May 2022 through January 2024 are \$85.8 million, an increase of \$2.9 million from the previous month.

Forecast Proposed FFGA Budget: The forecast proposed FFGA budget remains the same as the current proposed FFGA budget of \$3.573 billion.

Cost Contingency



Metro’s Cost Contingency Drawdown and Analysis was originally developed based on the findings of a quantitative risk assessment conducted by Metro in November 2023. Those values were incorporated into the draft FFGA application via the EPD Program application. These will also be shared with the PMOC for comment and discussion as the process matures leading to the submittal of the FFGA application.

There are three curves on the chart, (1) Minimum, (2) a 10% buffer zone above the Minimum curve, and (3) the Current/Forecasted. When contingency is either consumed or added to, as controlled through the cost forecasting process, the Project Control Manager updates the Current curve for comparison to the Plan. Penetration of the Current curve into the 10% buffer zone triggers additional risk management analysis. Further, a 3% percent Project Reserve will be established within the total project contingency. At such time as the Project Reserve is required to cover project costs, the Metro Board shall be notified and a forecast to complete the project shall be prepared.

Metro anticipates the final baseline values for this contingency will be formalized from the executed FFGA which will reflect final risk assessments performed by the PMOC in early 2024.

Summary of Contract Modifications

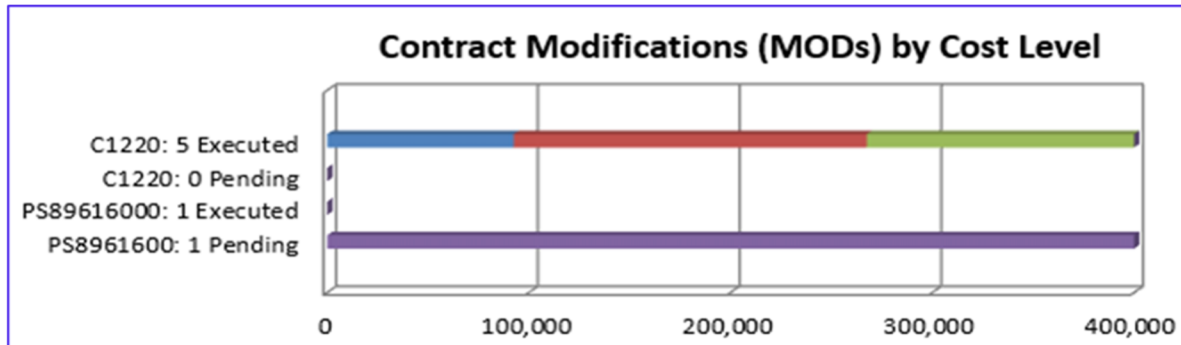


Chart Area	AUA - C1220			PDB Phase 1 - PS89616000			Total
	5 Executed	0 Pending	Subtotal	1 Executed	1 Pending	Subtotal	
■ Under \$100K	92,459	-	92,459	0	-	0	92,459
■ \$100K to \$250K	175,000	-	175,000	-	-	-	175,000
■ \$250K to \$1M	467,926	-	467,926	-	-	-	467,926
■ Over \$1M	-	-	-	-	9,000,000	9,000,000	9,000,000
Total Contract MODs	735,385	-	735,385	0	9,000,000	9,000,000	9,735,385
Contract Award Amount	9,044,350		9,044,350	30,979,750		30,979,750	
% of Contract MODs	8.1%			0.0%			

Note:
1. Percent of Contract MODs equals the Total Contract MODs divided by the Contract Award Amount.
2. Pending Mods are under review.

C1220 – NTP for AUA#1 was issued to W.A. Rasic on December 1, 2022. There were four modifications executed and one approved change for a total of \$735,385.

PS89616 – NTP for PDB Phase 1 was issued to San Fernando Transit Constructors (SFTC) on April 14, 2023. There has been one no-cost modification executed. The pending modification is for EWP-02 – IPMO Field Office/Warehouse.

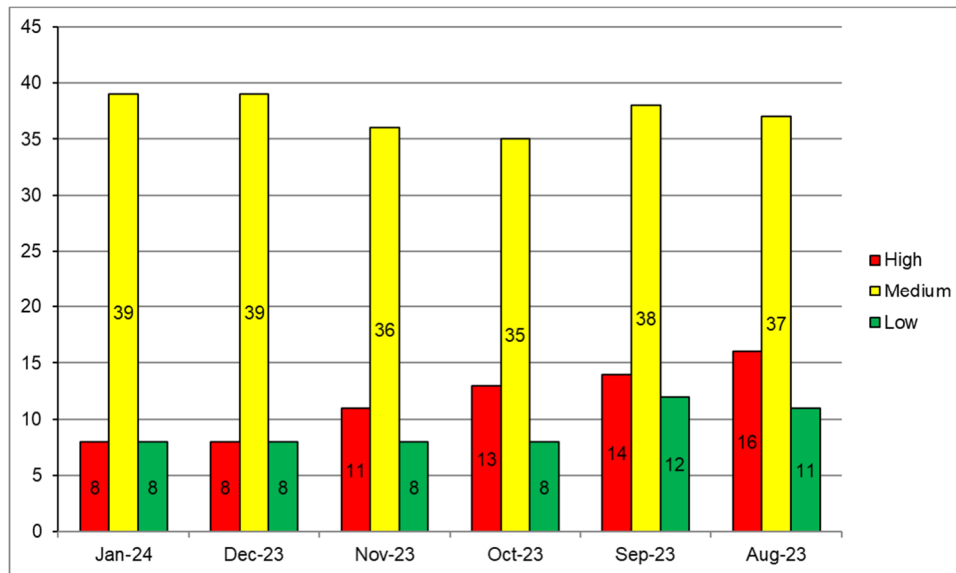
PS84743 – NTP for Solar Energy Public Private Partnership (P3) was issued to PCS Energy on December 7, 2022. Two no-cost modifications have been executed.

Risk Management

Metro conducts a recurring monthly internal risk working group to review the Risk Register with input from all corners of the Project including attendance by SFTC. The focus of reviews is to ensure effective action plans and mitigations, for managing each risk, is in place.

Metro also conducts a recurring monthly risk workshop with the FTA/PMOC Team. These reviews are focused on high-risk threats and those undergoing adjustments on any criteria, e.g., opening a new risk, closing a risk, change in ownership, strategy, or evaluated values.

In the January Risk Working Group no new risks were identified, and no risks were recommended for closure. A total of fifty-five (55) risks remain to be managed. Of the fifty-five (55) risks, eight (8) are scored as high, thirty-nine (39) as medium, and eight (8) as low. The changes to risk scoring for the past six (6) months can be seen in the chart below.



Top Risks

The table below shows the top Project risks measured by the exposure they pose to the budget:

East San Fernando Valley Transit Corridor			
Risk Register Version January 2024			
Risk ID	Risk Description	Risk Score	Action Items
1336	Risk that unknown utilities are encountered (or conditions found to be deteriorated) during construction requiring either demolition or relocation	16	Complete potholing. Develop flexible phasing to adjust work locations based on discoveries.
1429	Risk that the process for relocations / condemnations of businesses may be longer than anticipated and delay contractor access.	15	Reviewing relocations with full-takes. Prioritize acquisitions based on SFTC schedule. Advanced relocations based on business type.
1348	Risk that cost of ROW acquisition exceeds the real estate budget.	12	Develop TCEs
1364	Risk that construction of the project results in business owner impacts which increases costs through required mitigation measures. (during construction TMP, noise, signs)	12	Community outreach Establish a budget for offsetting stakeholder issues.
1431	Risk that additional property takes are needed which are identified later in design. (i.e., alignment, laydown, TCEs)	12	Develop TCEs

DISADVANTAGED BUSINESS ENTERPRISE (DBE)

Contract 1220 - ESFV Advanced Utility Adjustment (AUA) DWP Power Design 1 (December data)

DBE Goal	23%
Current DBE Commitment Total DBE Committed Dollars divided by Total Contract Value	\$2.43M 25.32%
Current DBE Participation Total amount paid to date to DBEs divided by the amount paid to date to Prime	\$1.875M 24.66%

Contract PS84743001- ESFV Light Rail Transit Project, Public Private Partnership for Solar Panels at Maintenance and Storage Facility (Phase 1) (Pre-Construction Design Services) (December data)

DBE Goal	5%
Current DBE Commitment Total DBE Committed Dollars divided by Total Contract Value	\$95K 8.94%
Current DBE Participation Total amount paid to date to DBEs divided by the amount paid to date to Prime	\$0K 0%

Contract 89616 - ESFV Light Rail Transit Line Project PDB(January data)

DBE Goal – Phase 1 The percentage of funds apportioned to Phase 1 Contracts	18%
Current DBE Commitment Phase 1 Total DBE Committed Dollars divided by Total Contract Value for Phase 1	\$5.98M 19.33%
Current DBE Participation Total amount paid to date to DBEs divided by the amount paid to date to Prime	\$2.39M 11.23%

DBE Goal – Phase 2 Early Work Packages (EWP) The percentage of funds apportioned to Phase 2 EWP	*15%-35%
Current DBE Commitment Phase 2 EWPs Contract commitment divided by current contract value for all EWPs	\$0M 0%
Current DBE Participation Phase 2 EWPs Total amount paid to date to DBEs divided by the amount paid to date to Prime	\$0M 0%

<p>DBE Goal – Phase 2 Supplement The percentage of funds apportioned to Phase 2 Contracts</p>	<p>*15%-30%</p>
<p>Current DBE Commitment Phase 2 Supplement Contract commitment divided by current contract value for Phase 2</p>	<p>\$0M 0%</p>
<p>Current DBE Participation Phase 2 Supplement Total amount paid to date to DBEs divided by the amount paid to date to Prime</p>	<p>\$0M 0%</p>

**DEOD established a preliminary DBE goal range of 15%-35% for the Phase 2 Early Works Packages and a 15%-30% goal range for the Phase 2 Construction Supplement. DEOD will establish the DBE goal(s) for the Phase 2 Design work and the Phase 2 Construction Work in accordance with the provisions of the contract.*

PROJECT LABOR AGREEMENTS (PLA)

Action on the Labor Agreement alignment to the PDB and P3 Contract awaits the successful negotiation of Phase 2.

Contract C9055C1220 East San Fernando Valley (ESFV) Advanced Utility Adjustment (AUA) DWP Power Design 1

(Reported Data as of December 2023)

<ul style="list-style-type: none"> ● Targeted Worker Goal – Construction work to be performed by residents from Economically Disadvantaged Area of LA County ● Targeted Worker Current Attainment ● Apprentice Worker Goal – Construction work to be performed by Apprentices ● Apprentice Worker Current Attainment ● Disadvantaged Worker Goal – Construction work to be performed by Disadvantaged Workers whose primary place of residence is within LA County ● Disadvantaged Worker Current Attainment 	<p>40.00%</p> <p>33.32%</p> <p>20.00%</p> <p>20.47%</p> <p>10.00%</p> <p>11.89%</p>
--	---

FINANCIAL/GRANT

EAST SAN FERNANDO VALLEY TRANSIT PROJECT

STATUS OF FUNDS BY SOURCE

As of Feb 15, 2024

(\$ in millions)

SOURCES	TOTAL FUNDS ANTICIPATED		TOTAL FUNDS AVAILABLE	
	\$	%	\$	%
Federal Revenue				
Section 3005(b) Expedited Project Delivery Pilot Program	\$ 893.3	25.00%	\$ -	0.00%
Section 5339 Alternatives Analysis	\$ -	0.00%	\$ -	0.00%
Federal Revenue Subtotal	\$ 893.3	25.00%	\$ -	0.00%
Local Revenue				
Prop A - Rail Development Account (35%)	\$ 23.0	0.64%	\$ 23.0	0.64%
Measure R - Transit Capital (35%)	\$ 36.3	1.02%	\$ 36.3	1.02%
Measure R - Transit Capital (35%)	\$ 182.0	5.09%	\$ 182.0	5.09%
Measure R - Highway Projects (20%)	\$ 49.4	1.38%	\$ 49.4	1.38%
Prop C - Discretionary (40%)	\$ 110.0	3.08%	\$ 110.0	3.08%
Prop C - Transit-Related Highway (25%)	\$ 201.3	5.63%	\$ 201.3	5.63%
Local Agency Transit Project Contributions	\$ 107.2	3.00%	\$ 107.2	3.00%
Measure M -Transit Construction (35%)	\$ 810.5	22.68%	\$ 810.5	22.68%
Measure M -Transit Construction (35%)	\$ 60.0	1.68%	\$ 60.0	1.68%
Local Revenue Subtotal	\$ 1,579.7	44.21%	\$ 1,579.7	44.21%
State Revenue				
Transit and Intercity Rail Capital Program (TIRCP)	\$ 805.0	22.53%	\$ 805.0	22.53%
Regional Improvement Program Funds (RIP)	\$ 202.1	5.66%	\$ 202.1	5.66%
Other State Revenue	\$ 18.2	0.51%	\$ 18.2	0.51%
SB1 - Local Partnership Program	\$ 74.9	2.10%	\$ 74.9	2.10%
State Revenue Subtotal	\$ 1,100.3	30.79%	\$ 1,100.3	30.79%
TOTAL SOURCES	\$ 3,573.3	100.00%	\$ 2,680.0	75.00%

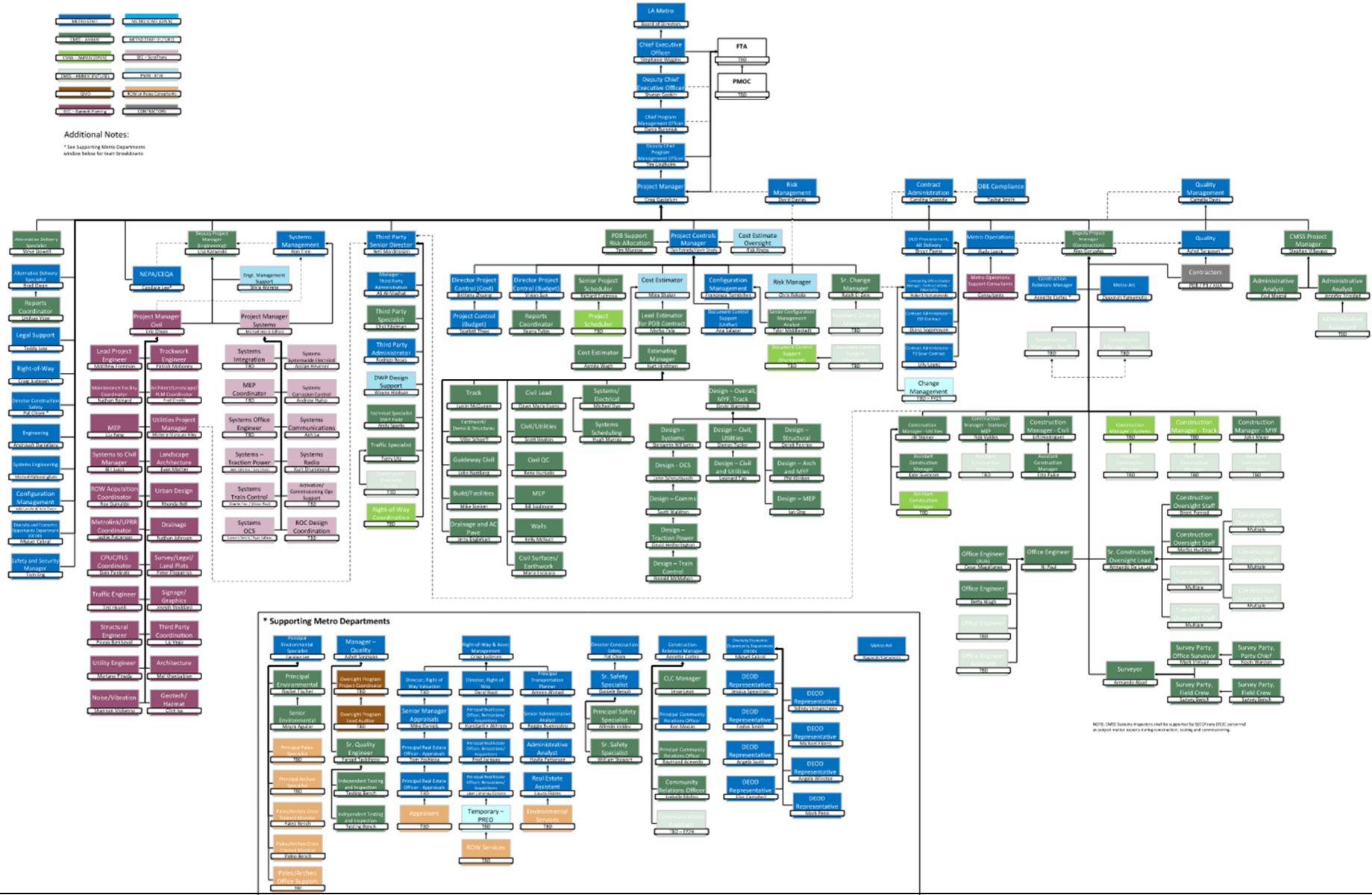
NOTES: Total sources reflect the proposed EPD budget of \$3,573.28 million (include finance charges of \$60 million and exclude Pre-authority amount of \$61.5 million).

PROJECT ORGANIZATION AND STAFFING

The PDB contract is being managed by a joint team of Metro and consultant personnel located at the Integrated Project Management Office (IPMO).



Additional Notes:
* See Supporting Metro Departments window below for team breakdowns



NOTE: DBE team members shall be approved by SDC Team SDC approved as subject matter experts during construction, testing and commissioning.

REAL ESTATE

Metro Real Estate continues to coordinate with the Project to update the Right-of-Way schedule and on the prioritization of property offers. Based upon the project schedule, the initial offers will be focused on the Maintenance and Storage Facility (MSF). These parcels also have and added benefit of serving as storage and laydown areas for the utility EWP construction activities.

The appraisal review process has been completed for sixteen of the sixteen MSF properties. A total of eight appraisal packages have been sent to FTA for concurrence. Seven have been approved to date. (As per FTA, currently, only appraisals above six million dollars require FTA concurrence). Formal offers were made to three property owners. One offer was accepted. Offer packages on the other approved appraisal packages are being prepared.

Currently 32 of the 32 MSF Real Estate Appraisals have been completed. (There are two real estate appraisals per parcel). Fifteen of the 16 Furniture, Fixtures & Equipment (FF&E) Appraisals have been completed for the original sixteen MSF parcels which make up the Maintenance & Storage Facility.

The appraisals and appraisal reviews for Traction Power Substation (TPSS) 1 and 2 are completed. Appraisals for TPSS 7 have been reviewed. Procurement for appraisers for the remaining TPSS sites is underway.

Relocation activities on environmentally cleared TPSS sites and MSF parcels are continuing. The Relocation Plan was approved by the LACMTA Board on November 30, 2023. Two displaced business tenants have been relocated.

LRVs

The Project includes the purchase of the Light Rail Vehicles (LRV) which will operate on the new line. In the draft FFGA, the Project included the purchase of 34 LRVs. Concurrently to the development of the FFGA, Metro was in the process of updating the agency Rail Fleet Management Plan (RFMP). Based upon updated modeling performed for the RFMP, Metro is investigating reducing the number of LRVs to be procured from 34 to 31 (24 in revenue service, 2 for gap train, 5 spare) supporting ultimate 6-minute Peak / 12-minute Off-Peak headways with an opening option of 8-minute Peak headways.

The Project will first contract with an experienced consultant team that will assist Metro in developing the technical aspects of the LRV procurement documents. The Request for Proposal (RFP) was issued for solicitation on October 16, 2023. The RFP proposals were received on January 5, 2024 and are currently being reviewed. NTP for this contract is scheduled for Spring 2024. Once the LRV consultant is onboard, they will assist Metro in preparing the contract documents for the LRV manufacturing contract. The LRV manufacturing procurement is scheduled to be advertised next winter, with NTP issued in 2025.

QUALITY ASSURANCE

January status:

- Implemented Quality Management Oversight (QMO) on PDB & AUA contract.
- Continued to perform QMO Awareness training & Workshop presentation sessions for ESFV Project Team.
- Continued to receive WAR's monthly Quality Records.
- Participated in weekly Internal Metro and Construction Progress Meetings.
- Quality Meetings were switched from weekly to bi-weekly for AUA Contract.
- Established a bi-weekly Quality Meeting with the PDB Contractor.
- Assessment for the PQPM for the PDB Contract in progress.
- Conducted comment matrix resolution session for Design Quality portion of the Project Quality Management Plan (PQMP), resubmittal will be required.
- Continue to hold meetings with representatives responsible for Quality from PDB Contract.

ENVIRONMENTAL

The following activities took place in January:

- Continue bi-weekly ESFV Environmental Coordination Meetings with PDB contractor.
- Reviewed PDB Contractor's Environmental Personnel's resume.
- Preliminary meeting for a Phase II Limited Site Assessment Work Plan for Site 9.
- Reviewed PDB contractor's Waste Management Plan (R1).
- Reviewed PDB contractor's Contaminated Substances and Hazardous Substances Management and Disposal Plan (R1).
- Paleo monitoring for the SCG utility abandonment field work.
- Reviewed PDB contractor's Additional Haul Routes.
- Reviewed Wet Weather Erosion Control Plan (R1).

CONSTRUCTION AND COMMUNITY RELATIONS

Construction Relations

Metro's Construction Relations and Mitigation Programs (CRMP) team has continued its ongoing bilingual (English and Spanish) outreach efforts in the Arleta, Pacoima, Panorama City, and Van Nuys communities. Several outreach tools have been employed from email campaigns, attending community meetings and events, to door-to-door canvassing of stakeholders along the project alignment. CRMP staff also responded and addressed Project related inquiries from the public received via the phone line and email. Six (6) inquiries were addressed by ESFV and Metro Project staff.

CRMP staff continue to outreach to support the Advance Utility Adjustments (AUA) work activities along Van Nuys Blvd. and Vanowen St. and the current and upcoming potholing activities at various locations on Van Nuys Blvd. along the Project alignment. CRMP staff also conducted coordination efforts to alleviate impacts to the businesses in this area in advance of construction.

AUA 1 Construction on Van Nuys Blvd. between Van Owen and Vose Streets

- Outreach and coordination efforts were conducted to stakeholders in the vicinity of the work and those directly impacted by driveway access restrictions.

Gas Line Relocation on Van Nuys Bl between Covello St and Valerio St

- Outreach and coordination efforts were conducted to stakeholders in the vicinity of the work to inform them about the upcoming construction activity and distribute construction notices door-to-door. Additionally, the notices were emailed to approximately 2,800 stakeholders.

Gas Line Relocation on Van Nuys Bl between Calvert St and Bessemer St

- Outreach and coordination efforts were conducted to stakeholders in the vicinity of the work to inform them about the upcoming construction activity and distribute construction notices door-to-door. Additionally, the notices were emailed to approximately 2,800 stakeholders.

Gas Line Relocation on Vena Av, between Van Nuys Bl and Carl St

- Outreach and coordination efforts were conducted to stakeholders in the vicinity of the work to inform them about the upcoming construction activity and distribute construction notices door-to-door. Additionally, the notices were emailed to approximately 2,800 stakeholders. Direct coordination was conducted with stakeholders directly impacted by driveway access restrictions.

Community Relations

Ongoing meetings with local Los Angeles City Council Offices 2, 6, and 7 continued. At these meetings/briefing, project staff provided construction updates on the Advance Utility Adjustments (AUA) work, Real Estate Acquisitions, Environmental Studies, and project staff also reported on the Progressive Design Build (PDB) contractor activities and a status update on the Business Interruption Fund (BIF) program and Business Solution Center (BSC) efforts.

Additionally, the CRMP team continues its door-to-door outreach efforts of small businesses and other stakeholders along the project alignment to gather data for business profiles and share information on the Eat Shop Play (ESP) program. Staff provided informational literature on the Project, available resources such as Eat Shop Play (ESP) and encouraged small business owners to sign up to receive project updates.

The CRMP team tabled at the City of Los Angeles Career Fair in Van Nuys to share information on the project and job opportunities through the contractor. The CRMP team continues to plan for the upcoming Winter community meetings on March 14 in Panorama City and on March 21 via Zoom.

Community Leadership Council

The first in-person Community Leadership Council (CLC) meeting will take place on Thursday, February 8 in Van Nuys at The Church on the Way. The CRMP team will provide updates on the Project and solicit feedback on Metro's outreach efforts for the Cultural Competency Plan, Business Interruption Fund, and Real Estate activities.

Outreach efforts for the CLC February meeting included the following: Pacoima Community Initiative in-person meeting in January (over 80 participants attended), and a virtual monthly meeting in February with over forty attendees; in-person Pacoima Neighborhood Council meeting in January, and the Panorama City in-person Neighborhood Council meeting; flyer distribution through various community organizations along the alignment; and announcements in various community e-newsletters such as Councilwoman Padilla's office, Supervisor Horvath's office, Senator Menjivar's office, The Valley Economic Alliance, and the Van Nuys Neighborhood Council. Lastly, the Mid-Valley YMCA distributed the meeting flyer through its food giveaway to over three hundred participants.

METRO ART

The following activities took place by the end of January:

- Conducted artwork fabrication and materials research.
- Oversaw planning and development for upcoming artist selection process.

SAFETY AND SECURITY

Continued to provide formal OSHA 10 and OSHA 30 training for the IPMO staff participating in construction activities. CMSS team continued to conduct weekly toolbox meetings and daily safety site inspections in January. Site specific orientations are conducted once a month.

Although no safety incidents were recorded in January, safety training for routine tasks continued in order to raise the level of safety consciousness and emphasize the importance that Safety must be a priority for which each team member is responsible.

Overall, for all construction contracts in the month of January, we have worked approximately 23,570 hours with 0 incidents, putting out the Total Recordable Incident Rate (TRIR) at 0, well below National average of 3.0.

APPENDIX
CHRONOLOGY OF EVENTS

April 2022	FTA EPD Project Selection Notification
May 2022	FTA issued a Letter of Intent (LOI) to Metro for FFGA
November 2022	Arcadis-Mott McDonald (CMSS) NTP
December 2022	W.A. Rasic NTP PCS Energy NTP
February 2023	San Fernando Transit Constructors (SFTC) awarded PDB Contract UAR Construction initiated by W.A. Rasic
April 2023	SFTC NTP for Phase 1 work
May 2023	SFTC's initial contract submittals received
August 2023	NTP +120 submittals received
December 2023	Draft FFGA Application submitted