



Los Angeles County
Metropolitan Transportation Authority

Metro

Metro Gold Line Foothill Extension

NEWS

Mar 1, 2016

Anna Chen/Joni Goheen
213.922.2254/213.922.2700
metro.net/press/pressroom
mediarelations@metro.net
FOR IMMEDIATE RELEASE

New Artwork along Metro Gold Line Foothill Extension to Make Public Debut March 5

The much anticipated Metro Gold Line Foothill Extension begins service Saturday, March 5. The 11.5-mile addition to the Gold Line offers an engaging collection of artworks at each of the six new stations.

Nine artists were commissioned to create original artwork reflecting the natural history and architectural heritage of the Foothill cities.

Artwork includes colorful seating elements, pavings, sculptures and even fences decorated to tell a story.

Bridge spanning Eastbound 210 Freeway in Arcadia

Andrew Leicester

Gold Line Bridge, 2012

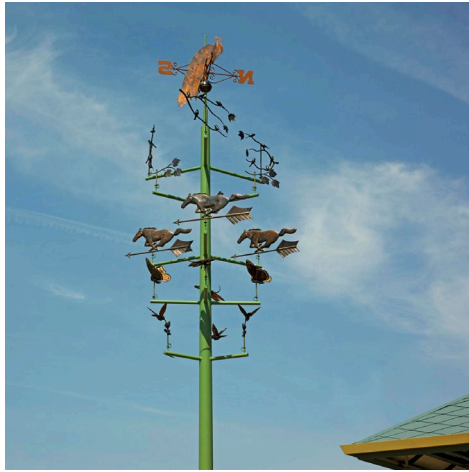


The structure serves as a symbolic gateway to the San Gabriel Valley and as a tribute to its earliest settlers, the landscape they inhabited and the iconic roadside attractions of nearby Route 66. The bridge includes twin sculptures of Native American baskets and a serpentine design on the bridge's underbelly simulates the patterns found on the native Western Diamondback snake.

Arcadia Station

Michael Davis

Arcadian Zephyr, 2015



The artwork depicts Arcadia's history. A weathervane sculpture represents the flora and fauna of the nearby Los Angeles County Arboretum and Botanic Garden. Galloping racehorse imagery embedded within the benches and on steel railing panels pays tribute to the historic Santa Anita Park racetrack. A peacock-inspired glass canopy honors the city's official bird. The feathered design on tile pavers in the adjacent parking garage also allude to the peacock.

Monrovia Station

Cha-Rie Tang

River of Time, 2015



Allusions to flowing water and motifs of the Arts and Crafts era highlight Monrovia's natural scenery and architecture found in the city's well-preserved homes. A seven-foot high rock and glass sculpture is also part of the plaza landscaping. Hundreds of handcrafted ceramic tiles — based on ones found in homes in Monrovia — enhance the entrance ramps, the base of platform columns and the adjacent parking structure.

Duarte/City of Hope Station

Andrea Myklebust and Stanton Gray Sears

Spirit of the San Gabriel River, 2015

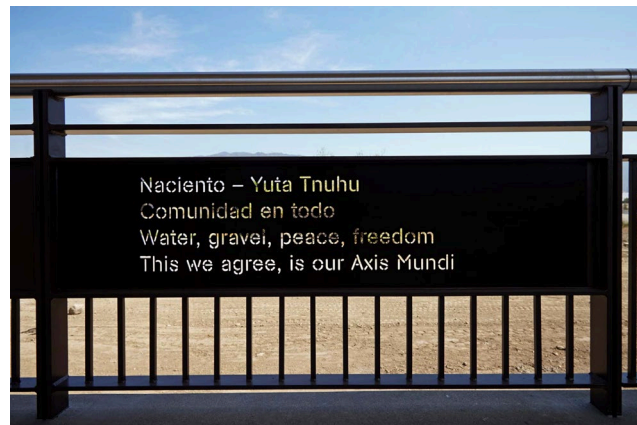


Sculptural steel columns and cast-bronze pavers signify the area's history. A topographical map, oak leaves, a Gabrielino-Tongva basket pattern and 19th-century tooled leather saddle are hand carved into the massive, limestone column capitals. The low-relief bronze paver designs on the station platforms are a nod to crate labels popularized decades ago when a local citrus industry thrived.

Irwindale Station

Robin Brailsford

Pioneros de la Rivera de San Gabriel, 2015



The artwork honors the area's founding families who capitalized on the local geology to create a thriving community and industrial center. Texts inscribed in the railing panels include a song for Irwindale and names from its centennial directory. Pavers on the platforms and adjacent parking structure reference the San Gabriel River, which flows through Irwindale.

Azusa Downtown Station

Jose Antonio Aguirre

A Passage Through Memory, 2015

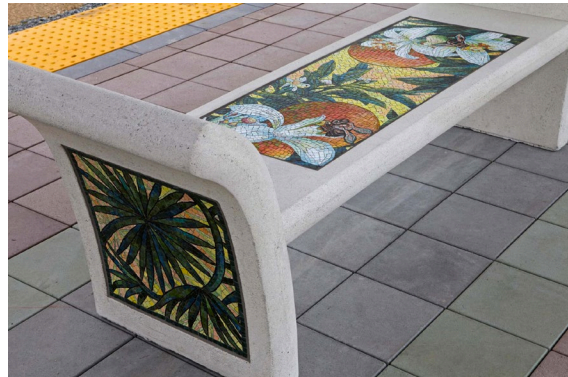


Inspired by local historic architecture and the cultural traditions of the region's earliest inhabitants, the artwork features Spanish colonial-style arched portals in glass fiber-reinforced concrete and handmade glass mosaics. The patterns draw upon Gabrielino-Tongva basket designs and enliven the platform columns.

APU/Citrus College Station

Lynn Goodpasture

Azusa Horticultural Paradise, 2015



The mosaic-clad benches and luminous hand-painted glass canopy celebrate Azusa's botanical heritage and the individuals who shaped the city's landscape. Colorful visions of native elements include honeybees, oranges, wild hyacinth, camellia flower and California fan palm. The botanical imagery is also found in the adjacent parking structure with floral designs in the concrete paving.

Artwork copyrighted, all rights reserved.

To request images of artwork for publication please email zellerh@metro.net.

For more information and free docent guided tours, visit metro.net/art or call 213.922.4ART.

Metro Art Program

Metro Art enhances the customer experience with innovative, award-winning visual and performing arts programming that encourages ridership and connects people, sites and neighborhoods throughout Los Angeles County. A diverse range of site-specific artworks are integrated into the growing Metro system,

improving the visual quality of transit environments and creating a sense of place. From photography installations to onboard posters, art tours and live performances, our multi-faceted arts programs add vibrancy and engage communities throughout Los Angeles.

###

Metro-038