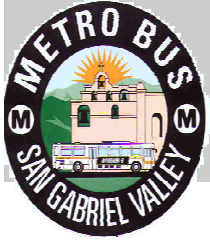


Metro San Gabriel Valley

Governance Council Meeting



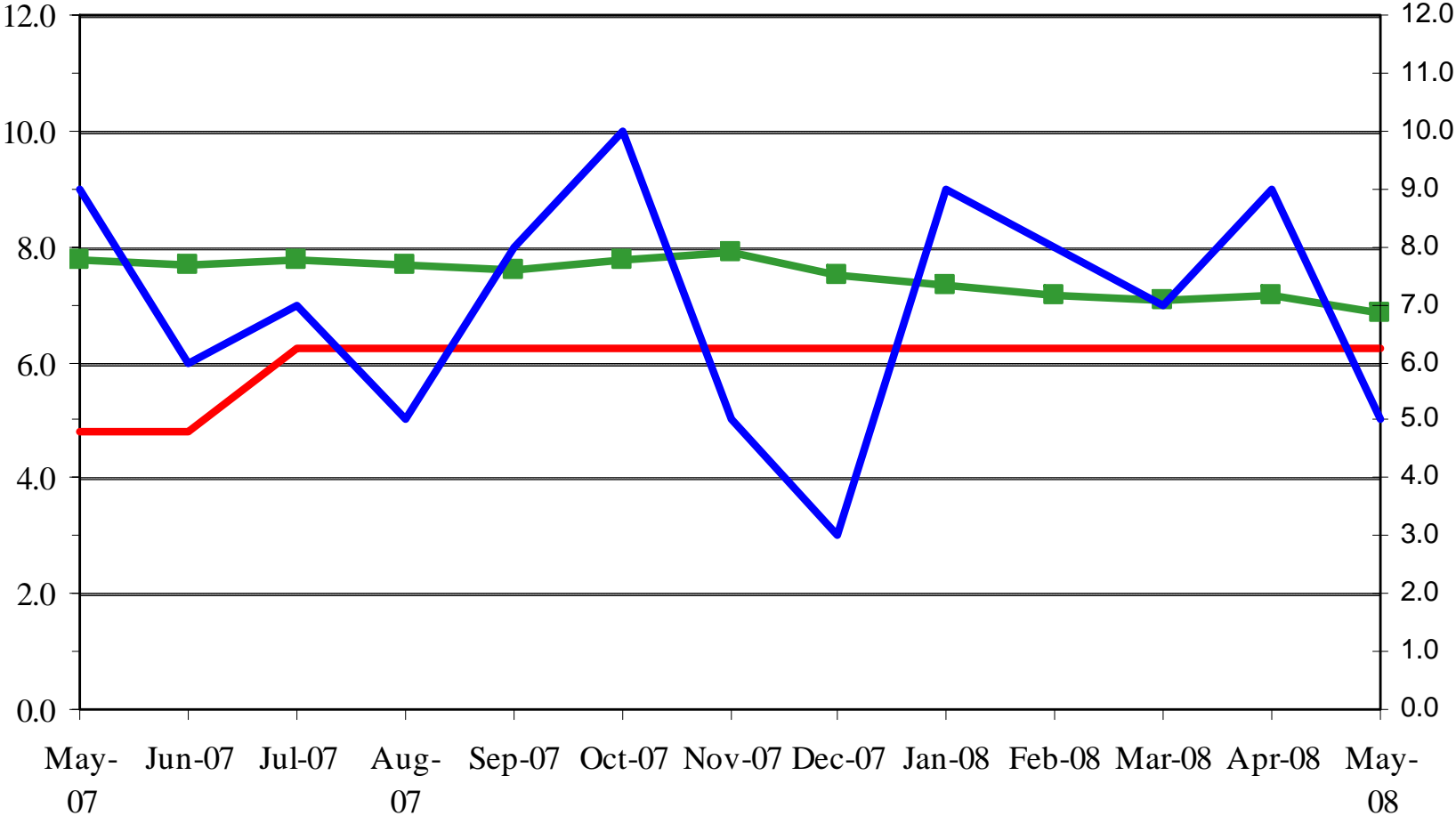
July 14, 2008



Metro San Gabriel Valley

May Performance Measures

OSHA RECORDABLE INJURIES

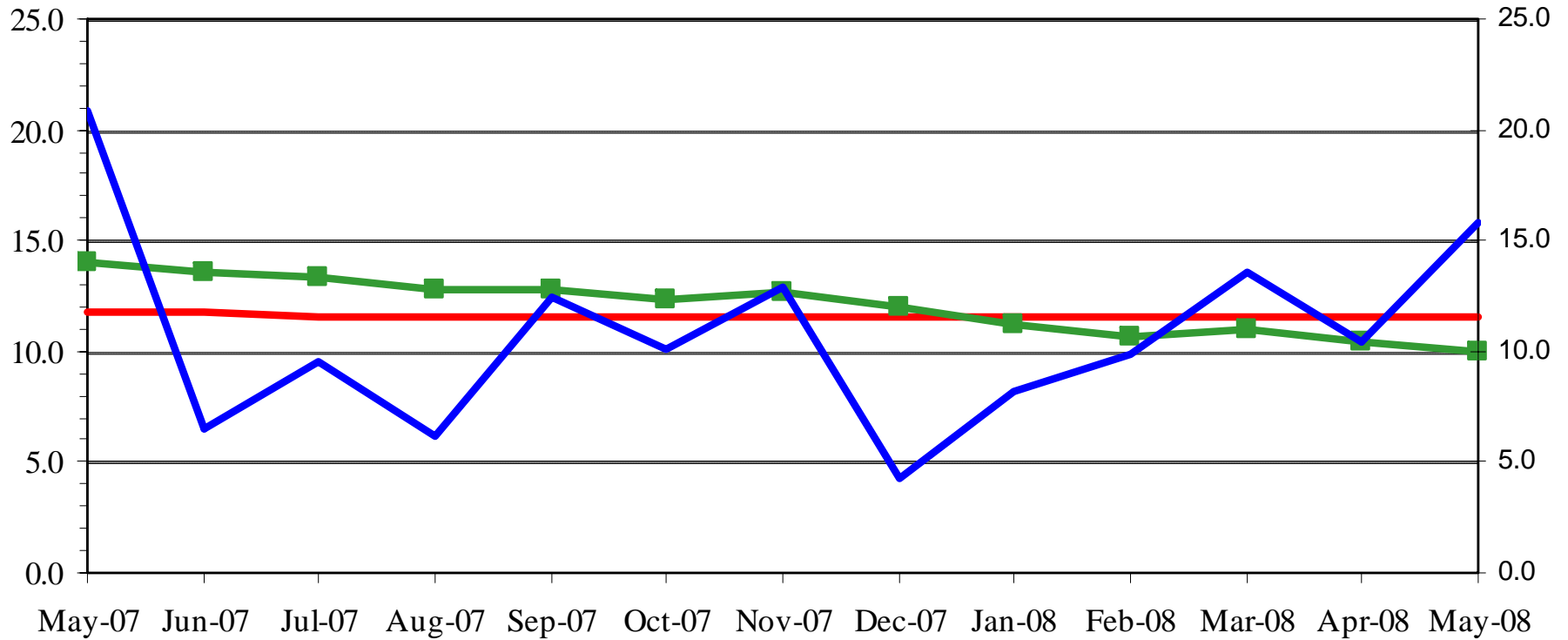


— Sector Goal — Trend (12-mon Avg) — Sector Actual



Metro

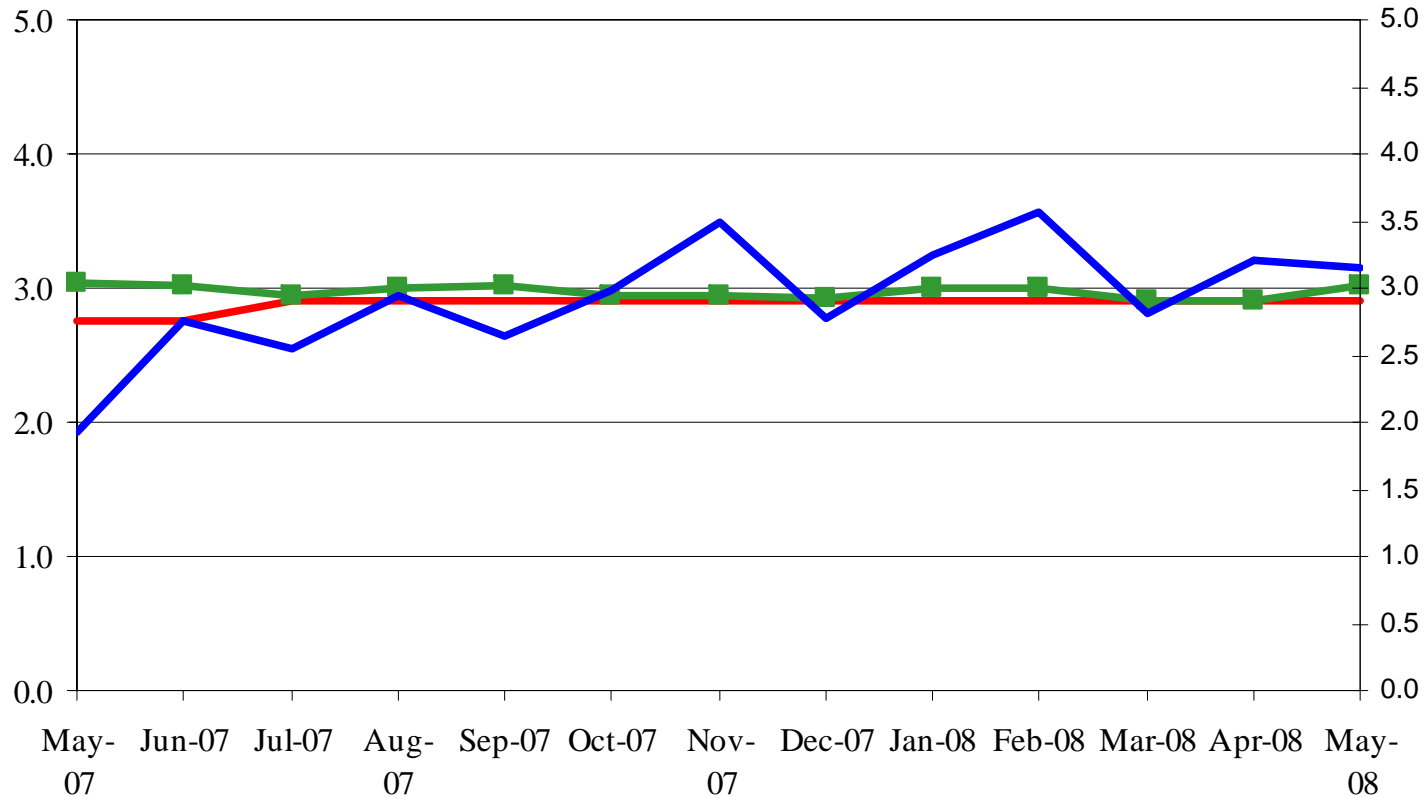
W. COMP INDEMINITY CLAIMS/200K EXP.HRS.



— Sector Goal —■— Trend (12-mon Avg) — Sector Actual

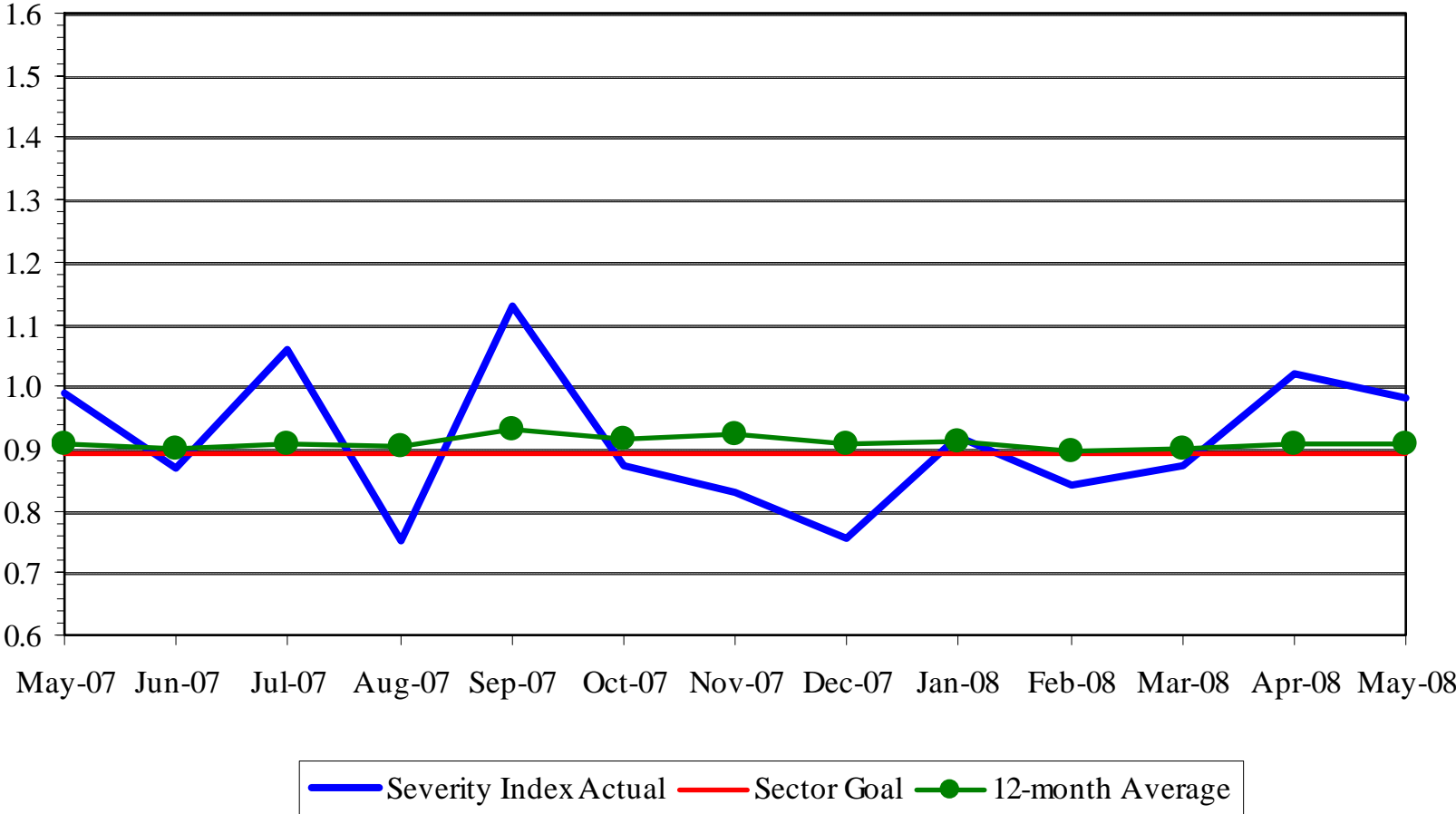


BUS ACCIDENT/100K MILES





— Sector Goal —■— Trend (12-mon Avg) — Sector Actual

BUS ACCIDENT SEVERITY INDEX



KEY PERFORMANCE INDICATORS



May 2008

PERFORMANCE INDICATORS	YTD AVG. MO.	May	MO. TARGET
SAFETY 			
OSHA Recordable Incidents	6.9	5	6.2
New WC Indemnity Claims Per 200,000 Exposure Hrs.	10.1	15.8	11.6
Bus Traffic Accidents/100,000 Hub Miles	3.2	3.2	2.9
BUS OPERATIONS			
Miles Between Total Road Calls 	1,140	1,230	1,912
On-Time Performance (%)	67%	68%	68%
Complaints/100,000 Boardings	2.6	2.1	2.5
Passenger Boardings (in Thousands)	5,523	5,676	<u>FY07 Mo. Avg.</u> 6,110



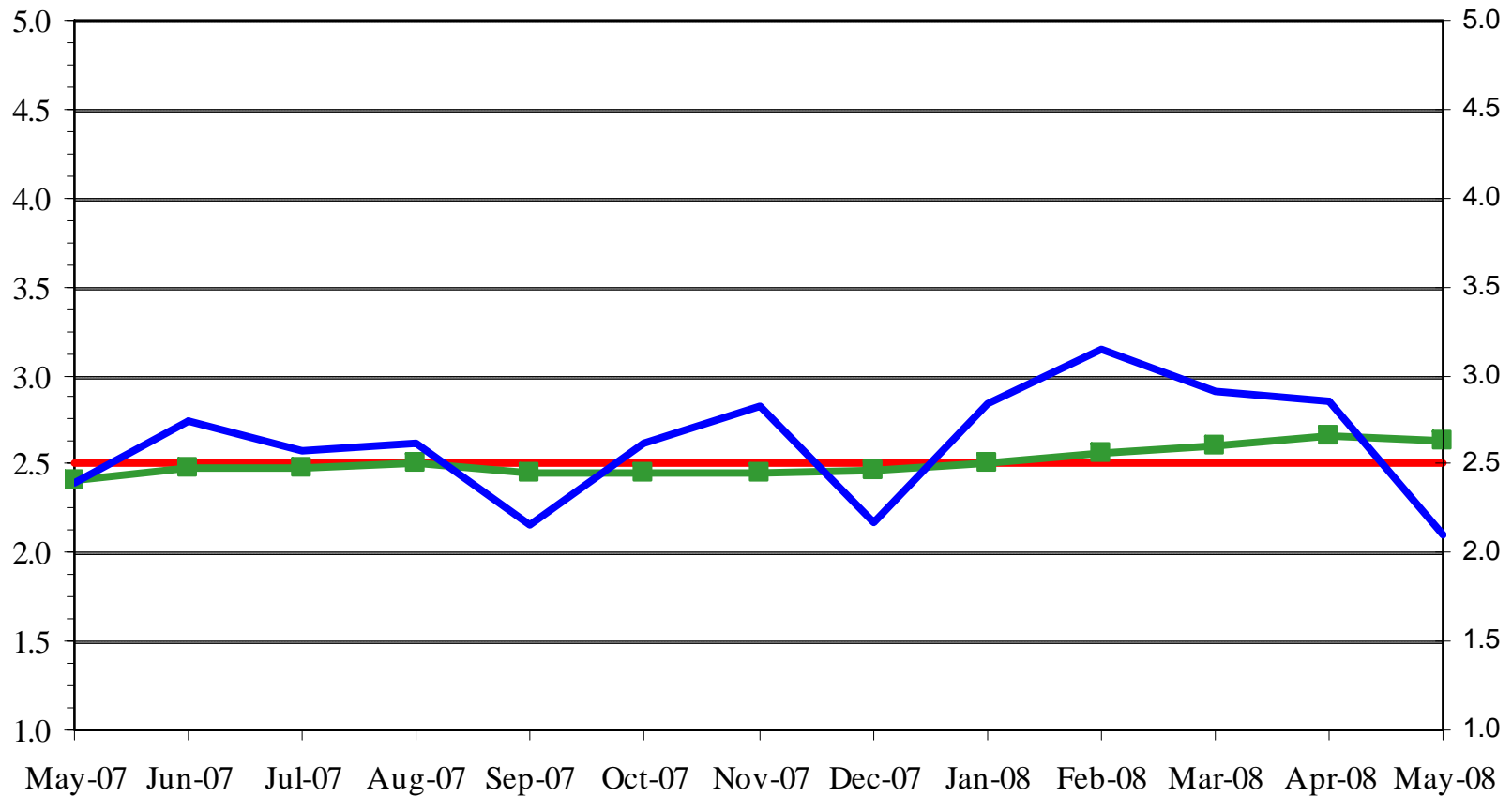
KEY PERFORMANCE INDICATORS

May 2008

PERFORMANCE INDICATORS	YTD AVG. MO.	May	MO. TARGET
SAFETY 			
OSHA Recordable Incidents	6.9	5	6.2
New WC Indemnity Claims Per 200,000 Exposure Hrs.	10.1	15.8	11.6
Bus Traffic Accidents/100,000 Hub Miles	3.2	3.2	2.9
BUS OPERATIONS			
Miles Between Total Road Calls	1,140	1,230	1,912
On-Time Performance (%) 	67%	68%	68%
Complaints/100,000 Boardings	2.6	2.1	2.5
Passenger Boardings (in Thousands)	5,523	5,676	<u>FY07 Mo. Avg.</u> 6,110



SGV SECTOR CUSTOMER COMPLAINTS/100k BOARDINGS



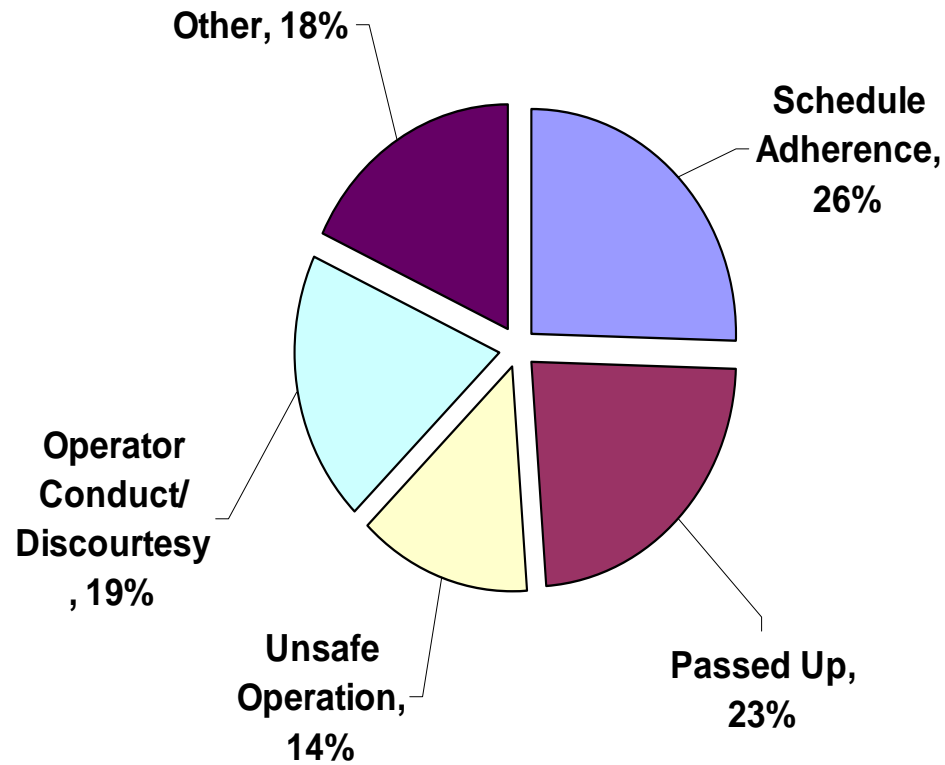
— Sector Goal —■— Trend (12-mon Avg) — Sector Actual



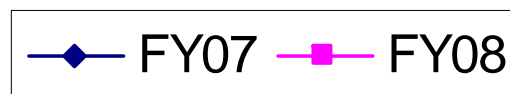
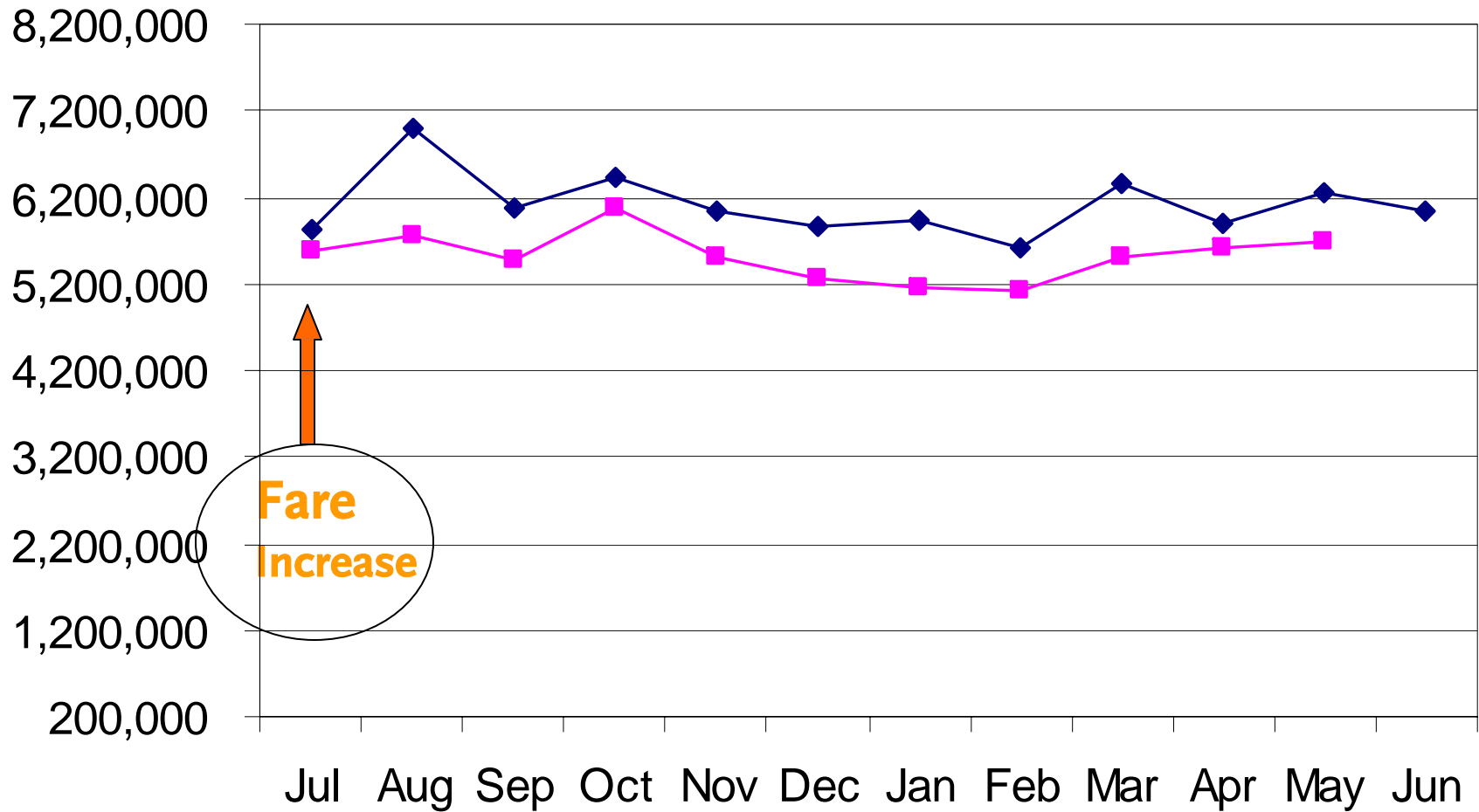
SGV SECTOR CUSTOMER COMPLAINTS by Category

May '08

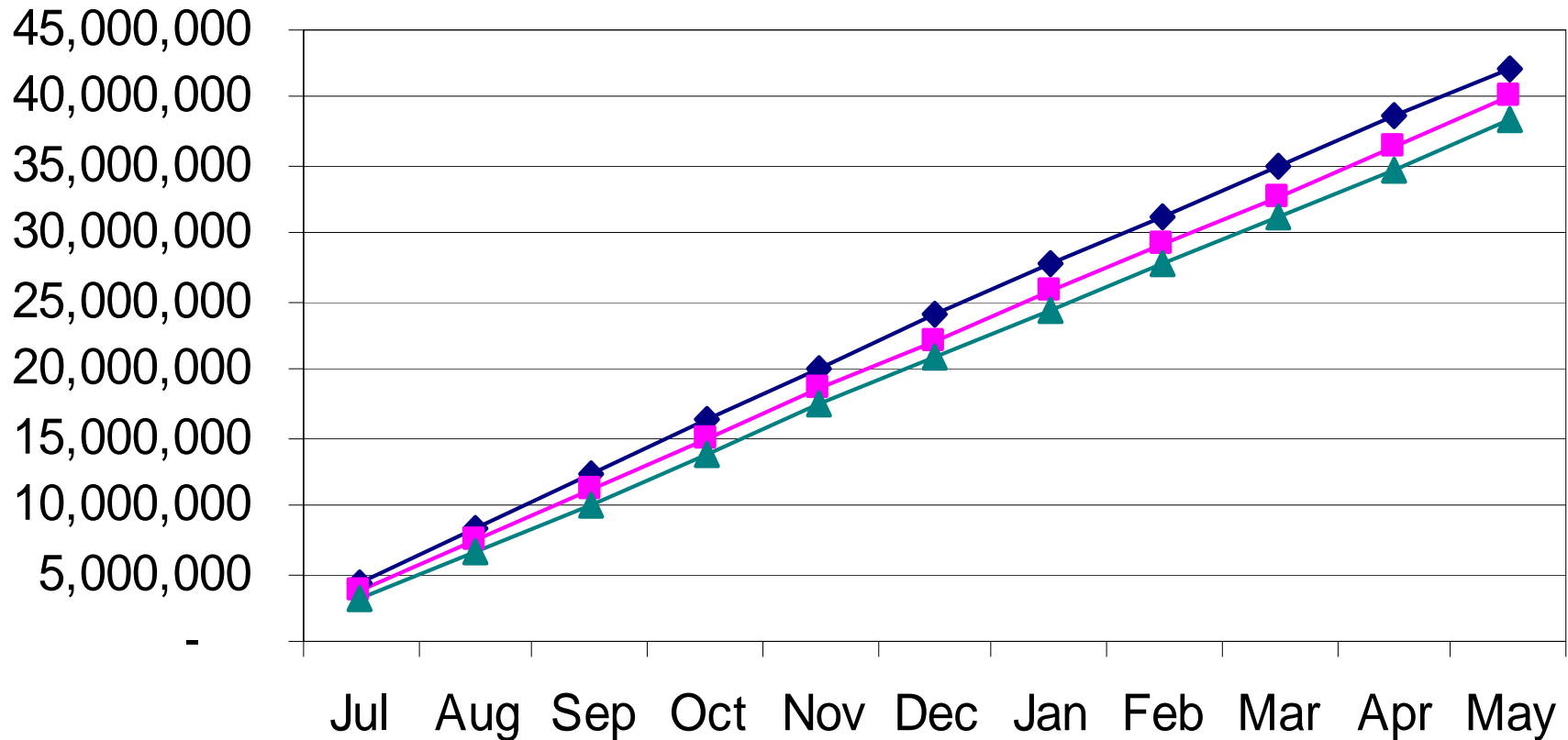
SGV



RIDERSHIP PER MONTH



SGV YTD FARE REVENUE



—◆— FY08 ACTUAL —■— FY08 BUDGET —▲— FY07 ACTUAL



"HOW YOU DOIN'?" – May 2008

DIVISION 9 TRANSPORTATION - 1ST PLACE

Metro Bus - Transportation						
<i>Rank Among Divisions</i>						
	25%	10%	25%	15%	25%	
	In-Service On-Time Performance	Miles Between Total Road Calls	Accident Rate	Complaints / 100K Boardings	New WC Claims /200,000 Exp Hrs*	MONTHLY TOTALS
Div 9	4	1	2	9	3	1st
Div 8	1	2	1	5	11	2nd
Div 1	3	9	6	4	2	3rd
Div 15	6	4	3	6	4	4th
Div 3	5	6	8	2	6	5th
Div 2	2	5	7	3	10	6th
Div 5	7	3	10	1	9	7th
Div 18	8	7	4	10	8	8th
Div 10	10	8	5	7	7	9th
Div 7	9	10	9	8	5	10th
Div 6	11	11	11	11	1	11th



Metro

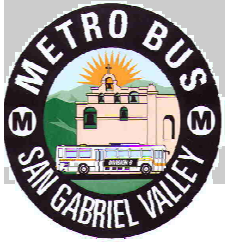
"HOW YOU DOIN'?" – May 2008

DIVISION 9 MAINTENANCE – 2ND PLACE

Metro Bus - Maintenance				
<i>Rank Among Divisions</i>				
	50%	20%	30%	
	Miles Between Total Road Calls	Attendance	New Workers Comp Claims /200,000 Exp Hrs*	MONTHLY TOTALS
Div 8	2	1	1 (Tie)	1st
Div 9	1	5	7	2nd
Div 5	3	6	8	3rd
Div 2	5	9	1 (Tie)	4th
Div 15	4	3	10	5th
Div 1	9	2	1 (Tie)	6th
Div 18	7	10	1 (Tie)	7th
Div 3	6	8	9	8th
Div 7	10	7	1 (Tie)	9th
Div 10	8	4	11	10th
Div 6	11	11	1 (Tie)	11th



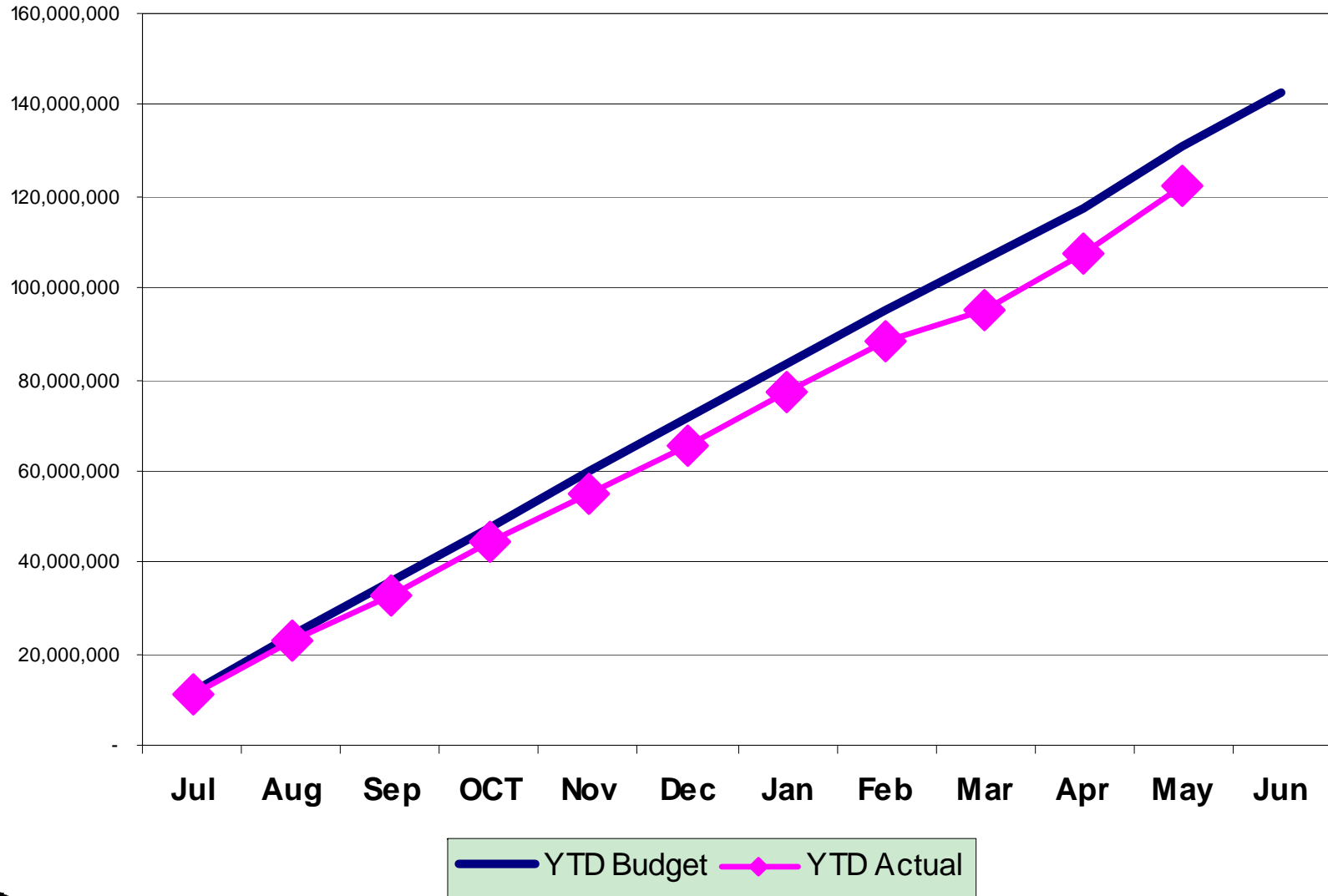
Metro



Metro San Gabriel Valley

May 2008 Financial Results

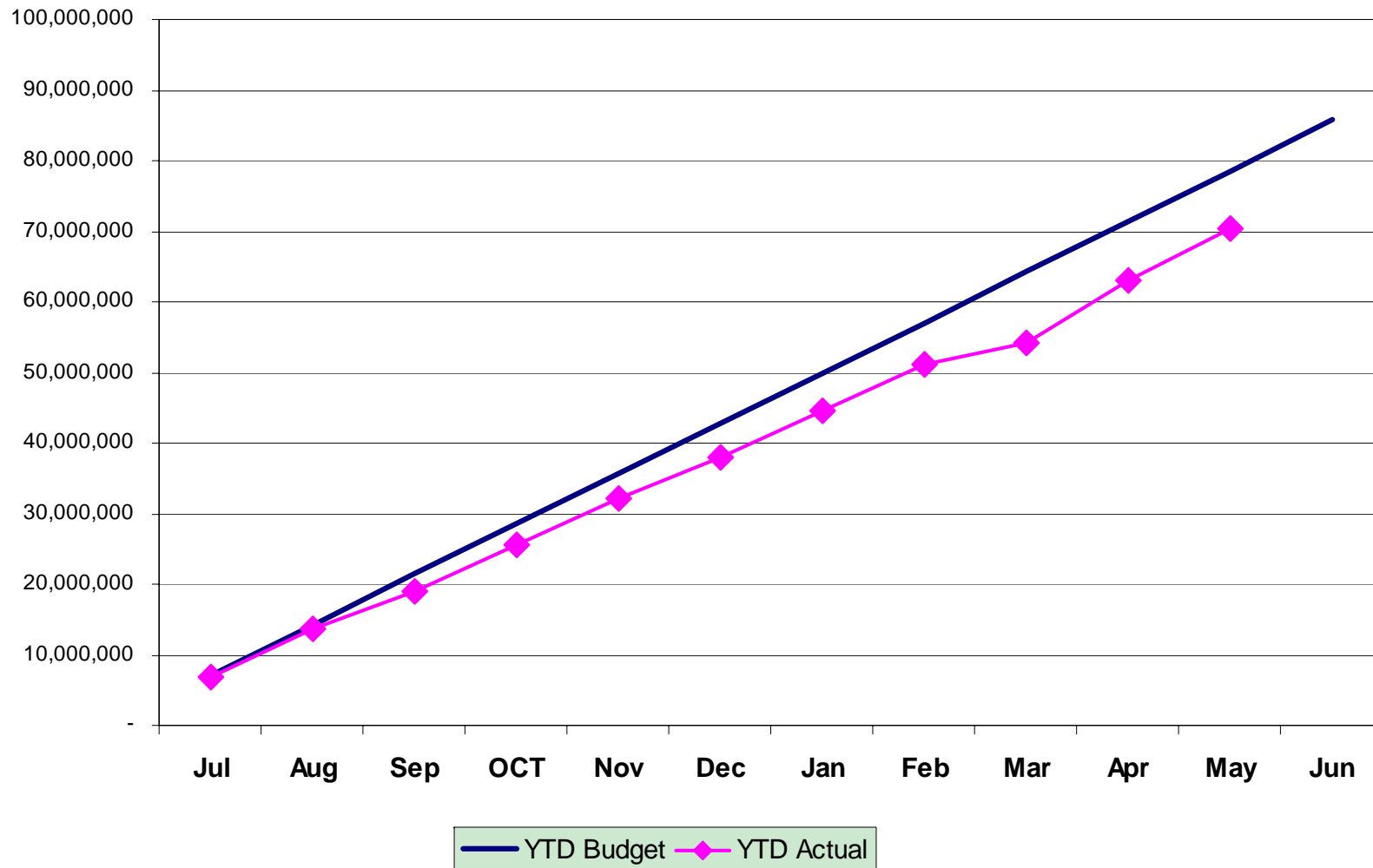
SGV Sector FY08 YTD Budget & Actual



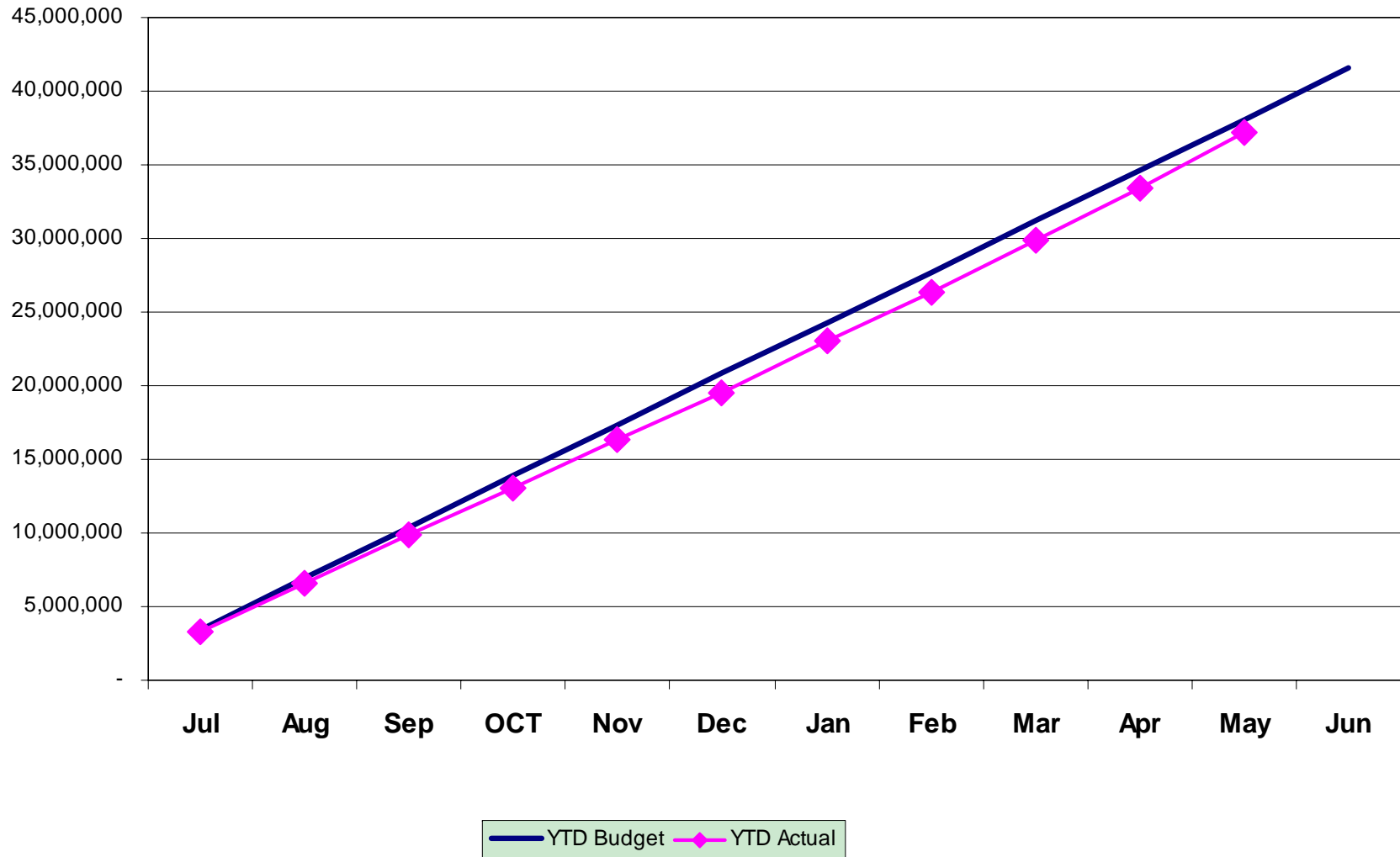
Metro

YTD Budget: \$130,863, 829 YTD Actual: \$122,168,530

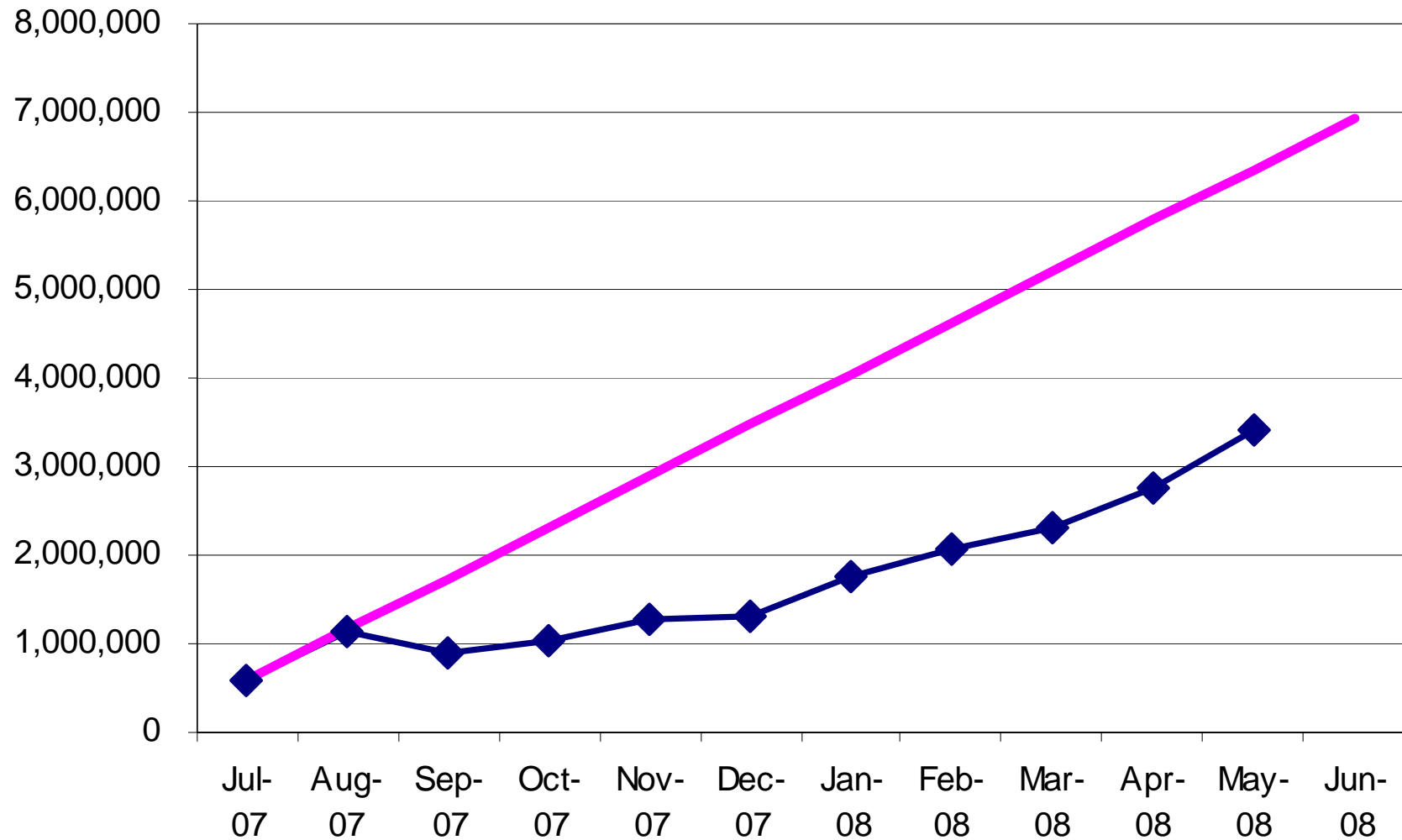
Transportation FY08 YTD Budget & Actual



Maintenance FY08 YTD Budget & Actual



SGV Sector FY08 YTD Workers' Comp Cost



—◆— YTD Actual — YTD Budget